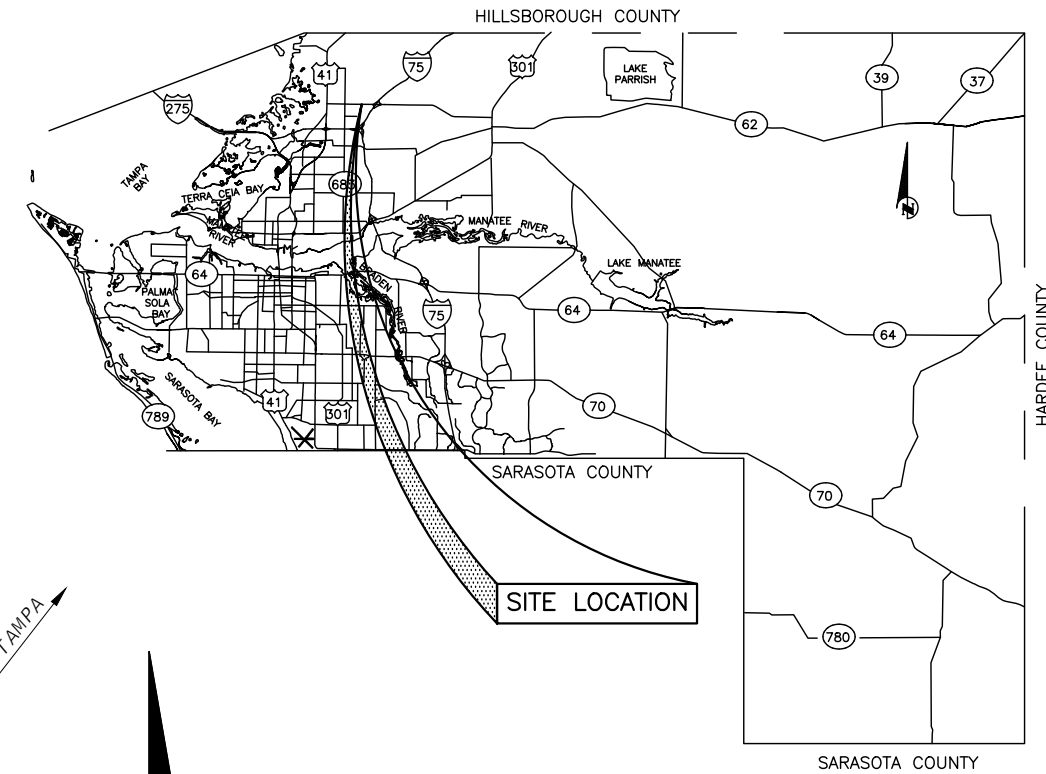




MANATEE COUNTY
PUBLIC WORKS DEPARTMENT
LIGHTING PLANS

MANATEE PROJECT ID 6092560
 MOCCASIN WALLOW ROAD
 FROM US 41 TO WEST OF I-75



"GOVERNING STANDARD PLANS:
 FLORIDA DEPARTMENT OF TRANSPORTATION, FY 2020-21 STANDARD PLANS FOR
 ROAD AND BRIDGE CONSTRUCTION AND APPLICABLE INTERIM REVISIONS (IRS).

STANDARD PLANS FOR ROAD CONSTRUCTION AND ASSOCIATED IRS ARE
 AVAILABLE AT THE FOLLOWING WEBSITE:
[HTTPS://WWW.FDOT.GOV/DESIGN/STANDARDPLANS](https://www.fdot.gov/design/standardplans)

APPLICABLE IRS: IR536-001-01, IR521-001-01

STANDARD PLANS FOR BRIDGE CONSTRUCTION ARE INCLUDED IN THE
 STRUCTURES PLANS COMPONENT.

GOVERNING STANDARD SPECIFICATIONS:
 FLORIDA DEPARTMENT OF TRANSPORTATION, JULY 2021 STANDARD
 SPECIFICATIONS FOR ROAD AND BRIDGE CONSTRUCTION AT THE FOLLOWING
 WEBSITE:
[HTTPS://WWW.FDOT.GOV/PROGRAMMANAGEMENT/IMPLEMENTED/SPECSBOOKS](https://www.fdot.gov/programmanagement/implemented/specsbooks)"

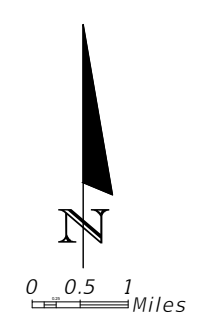
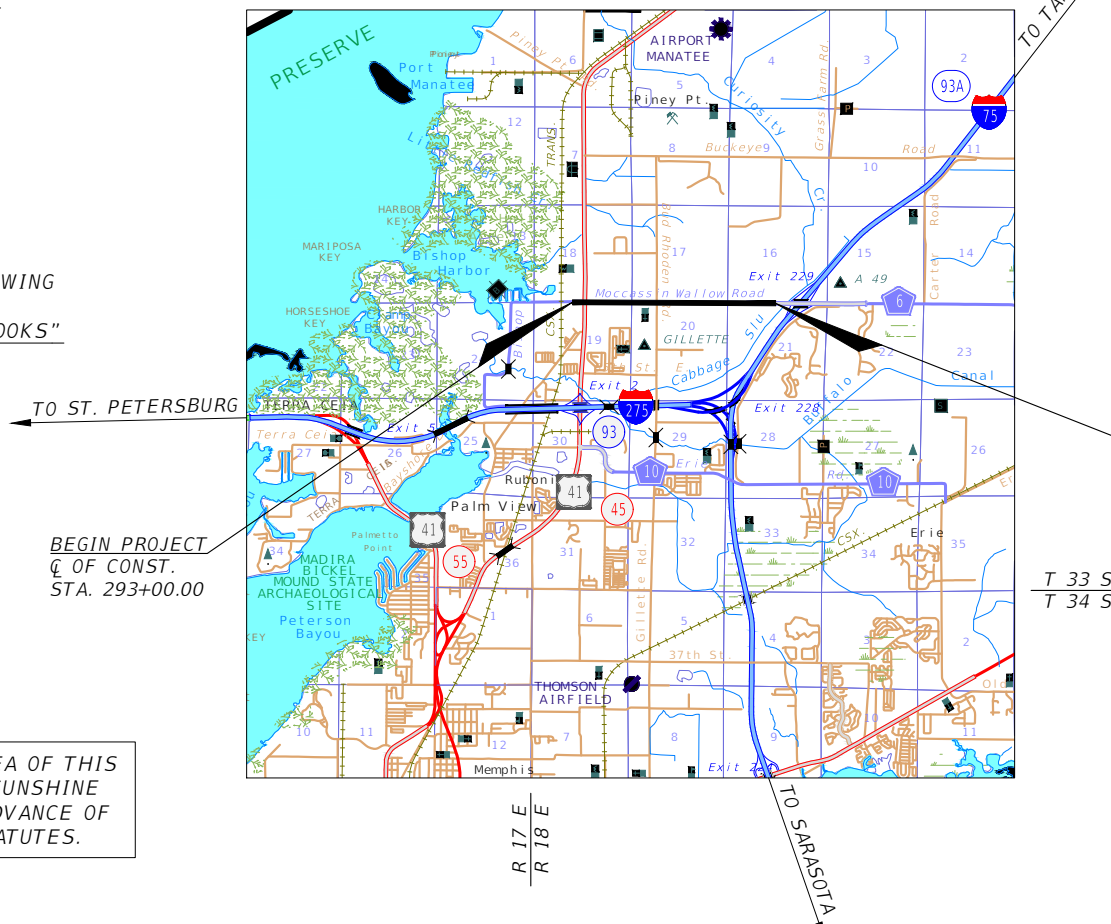
OTHER RELATED STANDARDS AND SPECIFICATIONS

- A. MANATEE COUNTY HIGHWAY & TRAFFIC STANDARDS MANUAL AND STORMWATER MANAGEMENT DESIGN MANUAL (JUNE 2015).
- B. MANATEE COUNTY UTILITIES STANDARDS MANUAL (JUNE 2020).

ATTENTION IS DIRECTED TO THE FACT THAT THESE PLANS
 MAY HAVE BEEN REDUCED IN SIZE BY REPRODUCTION. THIS
 MUST BE CONSIDERED WHEN OBTAINING SCALED DATA.

UTILITY WARNING NOTE

ABOVE GROUND AND / OR UNDERGROUND UTILITIES MAY BE IN THE AREA OF THIS
 PROJECT - PROCEED WITH CAUTION - THE CONTRACTOR SHALL CALL SUNSHINE
 STATE "ONE CALL" AT 1-800-432-4770 AND THE UTILITY OWNERS IN ADVANCE OF
 BEGINNING WORK, IN ACCORDANCE WITH CHAPTER 556, FLORIDA STATUTES.



END PROJECT
 Q. OF CONST.
 STA. 402+42.59

T 33 S
 T 34 S

PLANS PREPARED BY:



3905 Crescent Park Drive, Riverview, Florida, 33578
 www.cardno.com - 813.664.4500
 Certificate of Authorization No. 29915

LIGHTING PLANS
 ENGINEER OF RECORD:

DAVID J. ALLEN, PE
 P.E. NO.:58540

MANATEE COUNTY PROJECT MANAGER:
 DANIEL GARNER, PE

INDEX OF LIGHTING PLANS

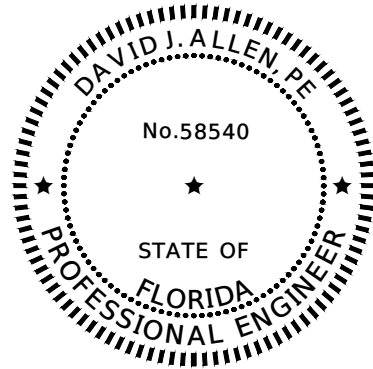
SHEET NO.	SHEET DESCRIPTION
L-1	KEY SHEET
L-2 (THRU L-2A)	SIGNATURE SHEET
L-3 THRU L- 5	TABULATION OF QUANTITIES
L-6	GENERAL NOTES
L-7	PAY ITEM FOOTNOTES
L-8	LIGHTING DATA TABLE AND LEGEND
L-9	LIGHTING DATA TABLE
L-10 THRU L-27	LIGHTING PLAN
L-28 THRU L-29	LOAD CENTER PANEL SCHEDULE
L-30 THRU L-31	LIGHT POLE SPECIAL FOUNDATION
L-32 THRU L-33	UTILITY CONFLICT LIGHT POLE DETAILS

SUMMARY OF REVISIONS

DATE	DESCRIPTION
7/11/22	△ SHEETS L-2A, L-8, L-9, L-13, L-14, L-22 SHIFT LIGHT POLES TO AVOID FORCE MAIN AND EMS DRIVEWAYS

SHEET NO.
 L-1

THE OFFICIAL RECORD OF THIS SHEET IS THE ELECTRONIC FILE DIGITALLY SIGNED AND SEALED UNDER RULE 61G15-23.004, F.A.C.



THIS ITEM HAS BEEN DIGITALLY
SIGNED AND SEALED BY:

ON THE DATE ADJACENT TO THE SEAL

PRINTED COPIES OF THIS DOCUMENT ARE
NOT CONSIDERED SIGNED AND SEALED AND
THE SIGNATURE MUST BE VERIFIED ON ANY
ELECTRONIC COPIES.

DAVID J. ALLEN, PE
CARDNO
3905 CRESCENT PARK DRIVE
RIVERVIEW, FL 33578
CERTIFICATE OF AUTHORIZATION 29915
PHONE NUMBER: (813) 664-4500

THE ABOVE NAMED PROFESSIONAL ENGINEER SHALL BE RESPONSIBLE FOR THE FOLLOWING
SHEETS IN ACCORDANCE WITH RULE 61G15-23.004, F.A.C.

LIGHTING PLAN INDEX

SHEET NO.	DESCRIPTION
L-1	KEY SHEET
L-2A	SIGNATURE SHEET
L-8	LIGHTING DATA TABLE AND LEGEND
L-9	LIGHTING DATA TABLE
L-13, L-14 AND L-22	LIGHTING PLAN

REVISIONS				DAVID J. ALLEN, PE P.E. LICENSE NUMBER 58540 CARDNO 3905 CRESCENT PARK DRIVE RIVERVIEW, FLORIDA 33578	MANATEE COUNTY		<i>SIGNATURE SHEET</i>	SHEET NO.
DATE	DESCRIPTION	DATE	DESCRIPTION		ROAD NO.	PROJECT ID		L-2A
7/11/22	REVISION 1 SIGNATURE SHEET				MOCCASIN WALLOW RD	6092560		

LIGHTING DATA TABLE

POLE NO.	CIRCUIT	STATION & OFFSET	DIST. OR ARM	LUMINAIRE WATTAGE	DISTRIBUTION	HOUSE SIDE SHIELD	MOUNTING HEIGHT	FOUNDATION TYPE	PAY ITEM
REPLACE LUMINAIRE ON EXISTING US 41 LIGHT POLE - TAG # 93A8				177	TYPE IV	NO	EXISTING POLE TO REMAIN	715-II-211	
REPLACE LUMINAIRE ON EXISTING US 41 LIGHT POLE - TAG # 93A6				177	TYPE IV	NO	EXISTING POLE TO REMAIN	715-II-211	
REPLACE LUMINAIRE ON EXISTING US 41 LIGHT POLE - TAG # 93A5				177	TYPE IV	NO	EXISTING POLE TO REMAIN	715-II-211	
REPLACE LUMINAIRE ON EXISTING US 41 LIGHT POLE - TAG # 93A7				177	TYPE IV	NO	EXISTING POLE TO REMAIN	715-II-211	
1	A-2	298+76 CL MOCCASIN WALLOW, 37.7' RT	15'	136	TYPE III	YES	35'	STANDARD	715-4-32
2	A-1	299+18 CL MOCCASIN WALLOW, 77.0' LT	15'	98	TYPE III	NO	35'	STANDARD	715-4-32
3	A-2	300+82 CL MOCCASIN WALLOW, 69.1' RT	15'	98	TYPE III	NO	35'	STANDARD	715-4-32
4	A-1	301+36 CL MOCCASIN WALLOW, 57.5' LT	15'	136	TYPE III	NO	35'	STANDARD	715-4-32
5	A-2	302+02 CL MOCCASIN WALLOW, 51.3' RT	15'	98	TYPE III	NO	35'	SPECIAL	715-4-42
6	A-1	302+96 CL MOCCASIN WALLOW, 57.5' LT	15'	98	TYPE III	NO	35'	STANDARD	715-4-32
7	A-2	303+87 CL MOCCASIN WALLOW, 51.3' RT	15'	98	TYPE III	YES	35'	SPECIAL	715-4-42
8	A-1	304+95 CL MOCCASIN WALLOW, 57.5' LT	15'	98	TYPE III	NO	35'	STANDARD	715-4-32
9	A-2	305+76 CL MOCCASIN WALLOW, 53.8' RT	15'	98	TYPE III	YES	35'	STANDARD	715-4-32
10	A-1	306+91 CL MOCCASIN WALLOW, 57.5' LT	15'	98	TYPE III	YES	35'	STANDARD	715-4-32
11	A-2	307+74 CL MOCCASIN WALLOW, 51.3' RT	15'	98	TYPE III	NO	35'	STANDARD	715-4-32
12	A-1	308+84 CL MOCCASIN WALLOW, 57.5' LT	15'	98	TYPE III	YES	35'	STANDARD	715-4-32
13	A-2	309+83 CL MOCCASIN WALLOW, 51.3' RT	15'	98	TYPE III	YES	35'	STANDARD	715-4-32
14	A-1	310+89 CL MOCCASIN WALLOW, 57.6' LT	15'	98	TYPE III	YES	35'	STANDARD	715-4-32
15	A-2	311+85 CL MOCCASIN WALLOW, 51.4' RT	15'	98	TYPE III	YES	35'	STANDARD	715-4-32
16	A-1	312+67 CL MOCCASIN WALLOW, 61.5' LT	15'	98	TYPE III	NO	35'	STANDARD	715-4-32
17	A-2	313+65 CL MOCCASIN WALLOW, 58.6' RT	15'	98	TYPE III	YES	35'	STANDARD	715-4-32
18	A-1	314+53 CL MOCCASIN WALLOW, 57.5' LT	15'	98	TYPE III	NO	35'	STANDARD	715-4-32
19	A-2	315+51 CL MOCCASIN WALLOW, 52.2' RT	15'	98	TYPE III	YES	35'	STANDARD	715-4-32
20	A-1	316+45 CL MOCCASIN WALLOW, 57.5' LT	15'	98	TYPE III	YES	35'	STANDARD	715-4-32
21	A-2	317+67 CL MOCCASIN WALLOW, 58.7' RT	15'	98	TYPE III	YES	35'	STANDARD	715-4-32
22	A-1	318+54 CL MOCCASIN WALLOW, 57.1' LT	15'	98	TYPE III	NO	35'	STANDARD	715-4-32
23	A-2	319+37 CL MOCCASIN WALLOW, 58.8' RT	15'	98	TYPE III	NO	35'	STANDARD	715-4-32
24	A-1	320+64 CL MOCCASIN WALLOW, 57.5' LT	15'	98	TYPE III	YES	35'	STANDARD	715-4-32
25	A-2	321+27 CL MOCCASIN WALLOW, 58.8' RT	15'	98	TYPE III	NO	35'	STANDARD	715-4-32
26	A-1	322+38 CL MOCCASIN WALLOW, 57.5' LT	15'	98	TYPE III	YES	35'	STANDARD	715-4-32
27	A-2	323+13 CL MOCCASIN WALLOW, 58.6' RT	15'	98	TYPE III	NO	35'	STANDARD	715-4-32
28	A-1	324+20 CL MOCCASIN WALLOW, 57.5' LT	15'	98	TYPE III	YES	35'	STANDARD	715-4-32
29	A-2	325+09 CL MOCCASIN WALLOW, 58.6' RT	15'	98	TYPE III	NO	35'	STANDARD	715-4-32
30	A-3	326+13 CL MOCCASIN WALLOW, 57.5' LT	15'	98	TYPE III	YES	35'	STANDARD	715-4-32
31	A-4	326+99 CL MOCCASIN WALLOW, 58.6' RT	15'	98	TYPE III	NO	35'	STANDARD	715-4-32
32	A-3	328+06 CL MOCCASIN WALLOW, 57.6' LT	15'	98	TYPE III	YES	35'	STANDARD	715-4-32
33	A-4	328+89 CL MOCCASIN WALLOW, 58.5' RT	15'	98	TYPE III	NO	35'	STANDARD	715-4-32
34	A-3	329+94 CL MOCCASIN WALLOW, 57.5' LT	15'	98	TYPE III	YES	35'	STANDARD	715-4-32
35	A-4	330+88 CL MOCCASIN WALLOW, 58.5' RT	15'	98	TYPE III	NO	35'	STANDARD	715-4-32
36	A-3	331+78 CL MOCCASIN WALLOW, 57.5' LT	15'	98	TYPE III	YES	35'	SPECIAL	715-4-42
37	A-4	332+47 CL MOCCASIN WALLOW, 58.3' RT	15'	98	TYPE III	NO	35'	STANDARD	715-4-32
38	A-3	333+70 CL MOCCASIN WALLOW, 76.5' LT	15'	98	TYPE III	YES	35'	SPECIAL	715-4-42
39	A-4	334+39 CL MOCCASIN WALLOW, 60.3' RT	15'	98	TYPE III	NO	35'	STANDARD	715-4-32
40	A-3	335+67 CL MOCCASIN WALLOW, 75.5' LT	15'	98	TYPE III	YES	35'	SPECIAL	715-4-42
41	A-4	336+37 CL MOCCASIN WALLOW, 69.9' RT	15'	98	TYPE III	NO	35'	STANDARD	715-4-32
42	A-3	337+38 CL MOCCASIN WALLOW, 57.5' LT	15'	98	TYPE III	YES	35'	STANDARD	715-4-32
43	A-4	338+45 CL MOCCASIN WALLOW, 71.4' RT	15'	98	TYPE III	NO	35'	STANDARD	715-4-32
44	A-3	338+97 CL MOCCASIN WALLOW, 80.7' LT	15'	136	TYPE IV	YES	35'	SPECIAL	715-4-42

MANATEE COUNTY
CONVENTIONAL ROADWAY
LIGHTING DESIGN CRITERIA

AVERAGE INITIAL INTENSITY 1.0 FOOT CANDLES
UNIFORMITY RATIO AVG./MIN. 4:1 OR LESS
MAX./MIN. 10:1 OR LESS
VEILING LUMINANCE RATIO 0.4:1 OR LESS
WIND SPEED 140 MPH

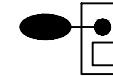
FDOT INTERSECTION
LIGHTING DESIGN CRITERIA

AVERAGE HORIZONTAL INTENSITY 3.0 FOOT CANDLES
(1.5 FOOT CANDLES MINIMUM)
UNIFORMITY RATIO AVG./MIN. 4:1 OR LESS
MAX./MIN. 10:1 OR LESS
AVERAGE VERTICAL INTENSITY 1.5 FOOT CANDLES
(1.2 FOOT CANDLES MINIMUM)
VEILING LUMINANCE RATIO 0.4:1 OR LESS
WIND SPEED 140 MPH

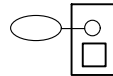
LEGEND

SYMBOLS

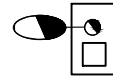
DESCRIPTION



MOCCASIN WALLOW ROAD UTILITY CONFLICT LIGHT POLE WITH 98 WATT LED LUMINAIRE:
98 WATT LED GE EVOLVE ERLH LUMINAIRE. DESIGNED FOR A FULL CUTOFF WITH 3000K COLOR TEMPERATURE. LUMINAIRE IS TO BE WIRED FOR 480 VOLT OPERATION. ONLY THE LUMINAIRES SPECIFIED IN THE POLE DATA TABLES SHALL INCLUDE A HOUSE SIDE SHIELD. DESIGN USED ERLH_11B330_-ELSHS-ERL-BLCK.IES, ERLH_11C330_-ELSHS-ERL-BLCK.IES AND ERLH_11D330_-ELSHS-ERL-BLCK.IES FOR TYPE II, TYPE III AND TYPE IV DISTRIBUTIONS RESPECTIVELY. DISTRIBUTION TYPE PER LUMINAIRE IS SHOWN ON THE POLE DATA TABLE. UTILITY CONFLICT LIGHT POLE MOUNTING HEIGHT OF 35 FEET WITH 15 FOOT ARM. THE LIGHT POLE FOUNDATION TYPE IS SPECIFIED IN THE LIGHTING DATA TABLE. UTILITY CONFLICT LIGHT POLE INCLUDES THE COST OF A MAINTENANCE PAD. PULL BOX AND POLE CABLE DISTRIBUTION SYSTEM (PCDS) TO BE PAID FOR SEPARATELY. FOR MORE INFORMATION FOR THE UTILITY CONFLICT POLES, SEE THE UTILITY CONFLICT LIGHT POLE DETAILS SHEET IN THE PLANS.



MOCCASIN WALLOW ROAD UTILITY CONFLICT LIGHT POLE WITH 136 WATT LED LUMINAIRE:
136 WATT LED GE EVOLVE ERLH LUMINAIRE. DESIGNED FOR A FULL CUTOFF WITH 3000K COLOR TEMPERATURE. LUMINAIRE IS TO BE WIRED FOR 480 VOLT OPERATION. ONLY THE LUMINAIRES SPECIFIED IN THE POLE DATA TABLES SHALL INCLUDE A HOUSE SIDE SHIELD. DESIGN USED ERLH_15B330_-ELSHS-ERL-BLCK.IES, ERLH_15C330_-ELSHS-ERL-BLCK.IES AND ERLH_15D330_-ELSHS-ERL-BLCK.IES FOR TYPE II, TYPE III AND TYPE IV DISTRIBUTIONS RESPECTIVELY. DISTRIBUTION TYPE PER LUMINAIRE IS SHOWN ON THE POLE DATA TABLE. UTILITY CONFLICT LIGHT POLE MOUNTING HEIGHT OF 35 FEET WITH 15 FOOT ARM. THE LIGHT POLE FOUNDATION TYPE IS SPECIFIED IN THE LIGHTING DATA TABLE. UTILITY CONFLICT LIGHT POLE INCLUDES THE COST OF A MAINTENANCE PAD. PULL BOX AND POLE CABLE DISTRIBUTION SYSTEM (PCDS) TO BE PAID FOR SEPARATELY. FOR MORE INFORMATION FOR THE UTILITY CONFLICT POLES, SEE THE UTILITY CONFLICT LIGHT POLE DETAILS SHEET IN THE PLANS.



MOCCASIN WALLOW ROAD STANDARD LIGHT POLE WITH 214 WATT LED LUMINAIRE:
214 WATT LED GE EVOLVE ERL2 LUMINAIRE. DESIGNED FOR A FULL CUTOFF WITH TYPE IV DISTRIBUTION AND 3000K COLOR TEMPERATURE. LUMINAIRE IS TO BE WIRED FOR 480 VOLT OPERATION. DESIGN USED ERL2_25D340_-IES. THE STANDARD LIGHT POLE MOUNTING HEIGHT IS 40 FEET WITH A 15 FOOT ARM. THE LIGHT POLE FOUNDATION TYPE IS SPECIFIED IN THE LIGHTING DATA TABLE. THE STANDARD LIGHT POLE INCLUDES THE COST OF A MAINTENANCE PAD. PULL BOX AND POLE CABLE DISTRIBUTION SYSTEM (PCDS) TO BE PAID FOR SEPARATELY.



US 41 LUMINAIRE REPLACEMENTS ON EXISTING FDOT LIGHT POLES:
177 WATT LED GE EVOLVE ERL2 LUMINAIRE. DESIGNED FOR A FULL CUTOFF WITH TYPE IV DISTRIBUTION AND 4000K COLOR TEMPERATURE. WIRED FOR 480 VOLT OPERATION. DESIGN USED ERL2_21D340_-347-480.IES. THE PROPOSED LED LUMINAIRE SHALL REPLACE THE EXISTING HPS LUMINAIRE AND THE EXISTING LIGHT POLES SHALL REMAIN.

● SCHEDULE 40 PVC CONDUIT WITH THWN-2 CONDUCTORS INSIDE (CONDUIT AND CONDUCTOR SIZE AS SHOWN ON PLAN SHEETS). RUN ONE (1) #6 AWG COPPER BOND CONDUCTOR (THWN-2 GREEN INSULATION) INSIDE CONDUIT WITH OTHER CONDUCTORS.

●● HDPE CONDUIT, DIRECTIONAL BORED UNDER PAVEMENT WITH THWN-2 CONDUCTORS INSIDE (CONDUIT AND CONDUCTOR SIZE AS SHOWN ON PLAN SHEETS). EXTEND CONDUIT BEYOND EDGE OF PAVEMENT TO PULL BOXES. RUN ONE (1) #6 AWG COPPER BOND CONDUCTOR (THWN-2 GREEN INSULATION) INSIDE CONDUIT WITH OTHER CONDUCTORS. ALL DIRECTIONAL BORE SHALL INCLUDE AN EMPTY SPARE CONDUIT WITH A PULL WIRE AS SHOWN IN THE PLANS.

□ PROPOSED PULL BOX. FOR SPECIFICATIONS SEE SECTION 635 OF THE FDOT STANDARD SPECIFICATIONS FOR ROAD AND BRIDGE CONSTRUCTION.

□ LOAD CENTER. FOR SPECIFICATIONS SEE THE THE PLANS AND FDOT STANDARD PLANS INDEX 639-001.

○ POWER SER4VICE ASSEMBLY. FOR SPECIFICATIONS SEE FDOT STANDARD PLANS INDEX 639-001.

REVISIONS

DATE	DESCRIPTION	DATE	DESCRIPTION
7/11/22	△ UPDATED THE STATIONING FOR LIGHT POLES 22 AND 24 SHIFT		

DAVID J. ALLEN, P.E.
P.E. LICENSE NUMBER 58540
CARDNO
3905 CRESCENT PARK DRIVE
RIVERVIEW, FLORIDA 33578
CERTIFICATE OF AUTHORIZATION 29915

MANATEE COUNTY

ROAD NO. PROJECT ID
MOCCASIN WALLOW RD 6092560

LIGHTING DATA TABLE AND
LEGEND

SHEET NO.

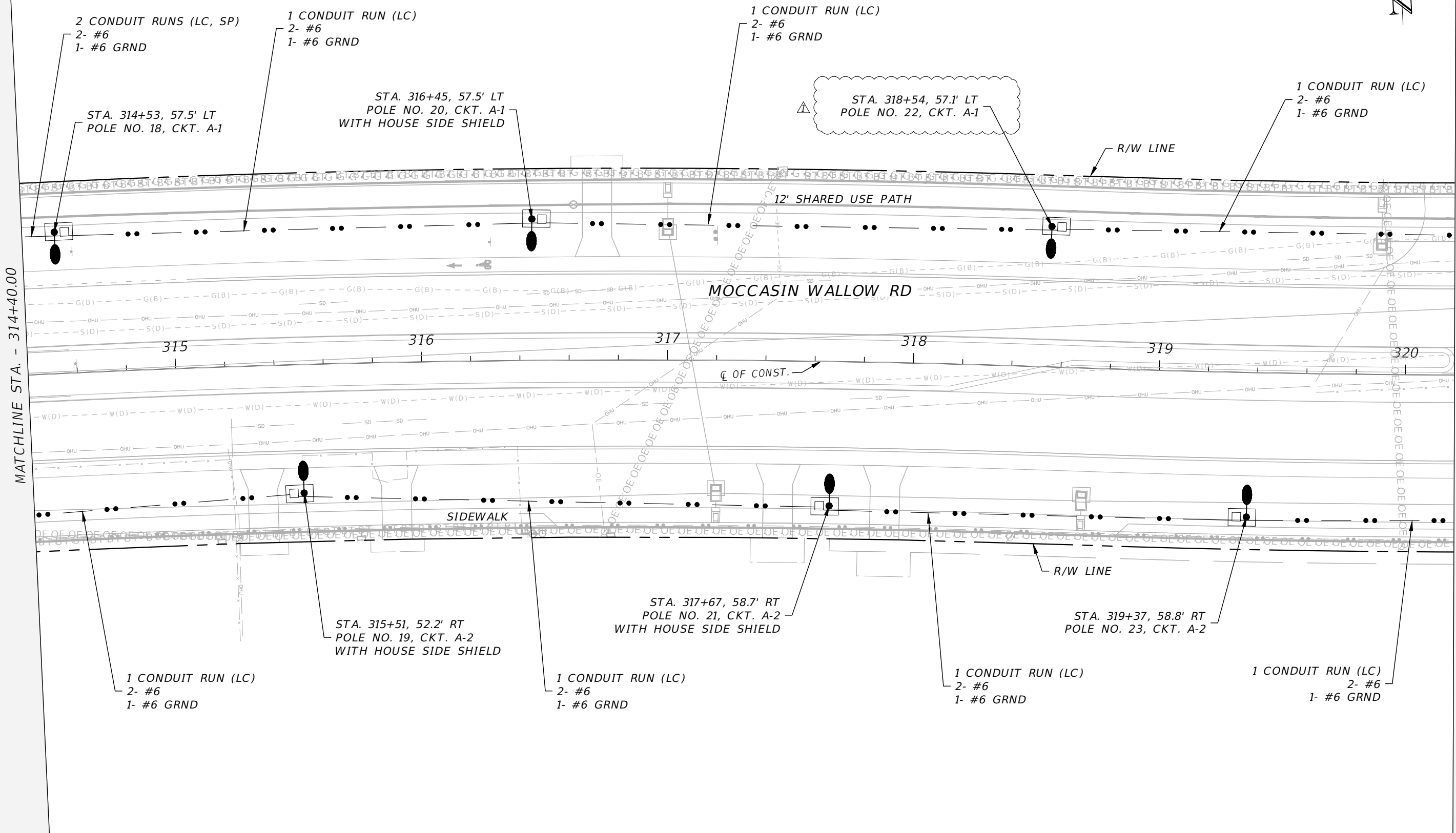
L-8

LIGHTING DATA TABLE

POLE NO.	CIRCUIT	STATION & OFFSET	DIST. OR ARM	LUMINAIRE WATTAGE	DISTRIBUTION	HOUSE SIDE SHIELD	MOUNTING HEIGHT	FOUNDATION TYPE	PAY ITEM
45	A-4	338+87 CL MOCCASIN WALLOW, 83.4' RT	15'	98	TYPE IV	NO	35'	STANDARD	715-4-32
46	A-3	239+25 CL BUD RHODEN, 31.2' LT	15'	136	TYPE II	YES	35'	STANDARD	715-4-32
47	A-4	236+85 CL ELLENTON GILLETTE, 37.0' RT	15'	136	TYPE II	NO	35'	STANDARD	715-4-32
48	A-4	340+26 CL MOCCASIN WALLOW, 58.0' RT	15'	98	TYPE III	NO	35'	STANDARD	715-4-32
49	A-3	340+39 CL MOCCASIN WALLOW, 69.4' LT	15'	136	TYPE III	NO	35'	STANDARD	715-4-32
50	A-4	341+39 CL MOCCASIN WALLOW, 58.5' RT	15'	98	TYPE III	NO	35'	STANDARD	715-4-32
51	A-3	342+39 CL MOCCASIN WALLOW, 69.5' LT	15'	98	TYPE III	NO	35'	STANDARD	715-4-32
52	A-4	343+36 CL MOCCASIN WALLOW, 59.2' RT	15'	98	TYPE III	YES	35'	STANDARD	715-4-32
53	A-3	343+98 CL MOCCASIN WALLOW, 57.5' LT	15'	98	TYPE III	NO	35'	STANDARD	715-4-32
54	A-4	345+55 CL MOCCASIN WALLOW, 58.3' RT	15'	98	TYPE III	YES	35'	STANDARD	715-4-32
55	A-3	346+12 CL MOCCASIN WALLOW, 57.4' LT	15'	98	TYPE III	NO	35'	STANDARD	715-4-32
56	A-4	347+52 CL MOCCASIN WALLOW, 58.6' RT	15'	98	TYPE III	NO	35'	STANDARD	715-4-32
57	A-3	348+21 CL MOCCASIN WALLOW, 57.6' LT	15'	98	TYPE III	NO	35'	STANDARD	715-4-32
58	A-4	349+43 CL MOCCASIN WALLOW, 58.4' RT	15'	98	TYPE III	NO	35'	STANDARD	715-4-32
59	A-3	350+14 CL MOCCASIN WALLOW, 57.5' LT	15'	98	TYPE III	NO	35'	STANDARD	715-4-32
60	A-4	351+35 CL MOCCASIN WALLOW, 58.5' RT	15'	98	TYPE III	NO	35'	STANDARD	715-4-32
61	A-3	352+19 CL MOCCASIN WALLOW, 57.5' LT	15'	98	TYPE III	YES	35'	STANDARD	715-4-32
62	A-4	353+12 CL MOCCASIN WALLOW, 58.5' RT	15'	98	TYPE III	NO	35'	STANDARD	715-4-32
63	B-1	354+18 CL MOCCASIN WALLOW, 57.5' LT	15'	98	TYPE III	NO	35'	STANDARD	715-4-32
64	B-2	355+15 CL MOCCASIN WALLOW, 58.5' RT	15'	98	TYPE III	NO	35'	STANDARD	715-4-32
65	B-1	356+17 CL MOCCASIN WALLOW, 57.5' LT	15'	98	TYPE III	NO	35'	STANDARD	715-4-32
66	B-2	357+37 CL MOCCASIN WALLOW, 70.0' RT	15'	98	TYPE III	NO	35'	SPECIAL	715-4-42
67	B-1	358+07 CL MOCCASIN WALLOW, 57.3' LT	15'	98	TYPE III	YES	35'	STANDARD	715-4-32
68	B-2	359+18 CL MOCCASIN WALLOW, 58.6' RT	15'	98	TYPE III	NO	35'	STANDARD	715-4-32
69	B-1	359+98 CL MOCCASIN WALLOW, 57.6' LT	15'	98	TYPE III	YES	35'	STANDARD	715-4-32
70	B-2	360+95 CL MOCCASIN WALLOW, 58.7' RT	15'	98	TYPE III	NO	35'	STANDARD	715-4-32
71	B-1	362+03 CL MOCCASIN WALLOW, 57.7' LT	15'	98	TYPE III	YES	35'	STANDARD	715-4-32
72	B-2	363+21 CL MOCCASIN WALLOW, 56.7' RT	15'	136	TYPE III	NO	35'	STANDARD	715-4-32
73	B-1	363+82 CL MOCCASIN WALLOW, 59.4' LT	15'	98	TYPE III	YES	35'	STANDARD	715-4-32
74	B-2	364+93 CL MOCCASIN WALLOW, 79.6' RT	15'	136	TYPE III	NO	35'	STANDARD	715-4-32
75	B-1	365+84 CL MOCCASIN WALLOW, 60.9' LT	15'	98	TYPE III	YES	35'	STANDARD	715-4-32
76	B-2	366+76 CL MOCCASIN WALLOW, 79.4' RT	15'	136	TYPE IV	NO	35'	STANDARD	715-4-32
77	B-1	366+96 CL MOCCASIN WALLOW, 90.0' LT	15'	136	TYPE IV	YES	35'	STANDARD	715-4-32
78	B-1	271+12 CL ARTESAN LAKES, 49.0' LT	15'	98	TYPE III	YES	35'	STANDARD	715-4-32
79	B-2	368+32 CL MOCCASIN WALLOW, 77.7' RT	15'	98	TYPE IV	NO	35'	STANDARD	715-4-32
80	B-1	368+59 CL MOCCASIN WALLOW, 86.9' LT	15'	136	TYPE IV	YES	35'	STANDARD	715-4-32
81	B-2	368+79 CL MOCCASIN WALLOW, 67.4' RT	15'	98	TYPE III	NO	35'	STANDARD	715-4-32
82	B-1	369+11 CL MOCCASIN WALLOW, 69.5' LT	15'	98	TYPE II	YES	35'	STANDARD	715-4-32
83	B-2	370+37 CL MOCCASIN WALLOW, 58.7' RT	15'	98	TYPE III	NO	35'	STANDARD	715-4-32
84	B-1	371+19 CL MOCCASIN WALLOW, 69.5' LT	15'	98	TYPE III	YES	35'	SPECIAL	715-4-42
85	B-2	372+43 CL MOCCASIN WALLOW, 58.3' RT	15'	98	TYPE III	NO	35'	STANDARD	715-4-32
86	B-1	372+81 CL MOCCASIN WALLOW, 69.5' LT	15'	98	TYPE III	YES	35'	STANDARD	715-4-32
87	B-2	374+37 CL MOCCASIN WALLOW, 67.6' RT	15'	98	TYPE III	NO	35'	STANDARD	715-4-32
88	B-1	374+79 CL MOCCASIN WALLOW, 57.5' LT	15'	98	TYPE III	NO	35'	STANDARD	715-4-32
89	B-2	376+37 CL MOCCASIN WALLOW, 67.8' RT	15'	98	TYPE III	NO	35'	STANDARD	715-4-32
90	B-1	376+84 CL MOCCASIN WALLOW, 57.5' LT	15'	98	TYPE III	NO	35'	STANDARD	715-4-32
91	B-2	378+08 CL MOCCASIN WALLOW, 67.9' RT	15'	98	TYPE III	NO	35'	STANDARD	715-4-32
92	B-1	378+86 CL MOCCASIN WALLOW, 57.3' LT	15'	98	TYPE III	YES	35'	STANDARD	715-4-32

POLE NO.	CIRCUIT	STATION & OFFSET	DIST. OR ARM	LUMINAIRE WATTAGE	DISTRIBUTION	HOUSE SIDE SHIELD	MOUNTING HEIGHT	FOUNDATION TYPE	PAY ITEM
93	B-4	380+37 CL MOCCASIN WALLOW, 70.2' RT	15'	98	TYPE II	NO	35'	STANDARD	715-4-32
94	B-3	380+81 CL MOCCASIN WALLOW, 57.5' LT	15'	98	TYPE III	YES	35'	STANDARD	715-4-32
95	B-4	382+70 CL MOCCASIN WALLOW, 70.3' RT	15'	98	TYPE II	NO	35'	STANDARD	715-4-32
96	B-3	382+69 CL MOCCASIN WALLOW, 57.5' LT	15'	98	TYPE III	NO	35'	STANDARD	715-4-32
97	B-3	384+39 CL MOCCASIN WALLOW, 57.5' LT	15'	98	TYPE III	NO	35'	STANDARD	715-4-32
98	B-4	384+66 CL MOCCASIN WALLOW, 67.3' RT	15'	136	TYPE IV	NO	35'	STANDARD	715-4-32
99	B-3	282+89 CL GATEWAY, 42.4' RT	15'	214	TYPE IV	NO	40'	STANDARD	715-4-13
100	B-4	280+45 CL 49TH AVE E, 62.4' RT	15'	136	TYPE III	NO	35'	STANDARD	715-4-32
101	B-4	386+06 CL MOCCASIN WALLOW, 76.4' RT	15'	136	TYPE IV	NO	35'	STANDARD	715-4-32
102	B-3	386+32 CL MOCCASIN WALLOW, 76.7' LT	15'	136	TYPE III	NO	35'	STANDARD	715-4-32
103	B-4	386+65 CL MOCCASIN WALLOW, 56.3' RT	15'	98	TYPE III	NO	35'	STANDARD	715-4-32
104	B-3	387+06 CL MOCCASIN WALLOW, 105.9' LT	15'	98	TYPE III	NO	35'	STANDARD	715-4-32
105	B-4	387+94 CL MOCCASIN WALLOW, 56.4' RT	15'	98	TYPE III	NO	35'	STANDARD	715-4-32
106	B-3	388+63 CL MOCCASIN WALLOW, 106.3' LT	15'	136	TYPE IV	NO	35'	STANDARD	715-4-32
107	B-4	389+22 CL MOCCASIN WALLOW, 59.4' RT	15'	98	TYPE III	NO	35'	STANDARD	715-4-32
108	B-3	390+05 CL MOCCASIN WALLOW, 106.6' LT	15'	136	TYPE IV	NO	35'	STANDARD	715-4-32
109	B-4	390+44 CL MOCCASIN WALLOW, 69.4' RT	15'	98	TYPE III	NO	35'	STANDARD	715-4-32
110	B-3	391+51 CL MOCCASIN WALLOW, 106.0' LT	15'	136	TYPE IV	NO	35'	STANDARD	715-4-32
111	B-4	392+06 CL MOCCASIN WALLOW, 76.0' RT	15'	98	TYPE III	NO	35'	STANDARD	715-4-32
112	B-3	392+86 CL MOCCASIN WALLOW, 104.1' LT	15'	136	TYPE IV	NO	35'	STANDARD	715-4-32
113	B-4	393+15 CL MOCCASIN WALLOW, 63.4' RT	15'	98	TYPE III	NO	35'	STANDARD	715-4-32
114	B-3	394+31 CL MOCCASIN WALLOW, 104.1' LT	15'	136	TYPE IV	NO	35'	STANDARD	715-4-32
115	B-4	394+29 CL MOCCASIN WALLOW, 67.9' RT	15'	98	TYPE III	NO	35'	STANDARD	715-4-32
116	B-3	395+71 CL MOCCASIN WALLOW, 103.0' LT	15'	136	TYPE IV	NO	35'	STANDARD	715-4-32
117	B-4	396+47 CL MOCCASIN WALLOW, 70.1' RT	15'	98	TYPE III	NO	35'	STANDARD	715-4-32
118	B-3	397+13 CL MOCCASIN WALLOW, 102.0' LT	15'	136	TYPE IV	NO	35'	STANDARD	715-4-32
119	B-4	398+33 CL MOCCASIN WALLOW, 69.8' RT	15'	98	TYPE III	NO	35'	STANDARD	715-4-32
120	B-3	398+52 CL MOCCASIN WALLOW, 101.0' LT	15'	136	TYPE IV	NO	35'	STANDARD	715-4-32
121	B-3	399+98 CL MOCCASIN WALLOW, 97.0' LT	15'	136	TYPE IV	NO	35'	STANDARD	715-4-32
122	B-4	400+20 CL MOCCASIN WALLOW, 69.6' RT	15'	98	TYPE III	NO	35'	STANDARD	715-4-32
123	B-3	400+94 CL MOCCASIN WALLOW, 66.2' LT	15'	136	TYPE IV	NO	35'	STANDARD	715-4-32

REVISIONS				DAVID J. ALLEN, P.E. P.E. LICENSE NUMBER 58540 CARDNO 3905 CRESCENT PARK DRIVE RIVERVIEW, FLORIDA 33578 CERTIFICATE OF AUTHORIZATION 29915	MANATEE COUNTY		LIGHTING DATA TABLE	SHEET NO.
DATE	DESCRIPTION	DATE	DESCRIPTION		ROAD NO.	PROJECT ID		
7/11/22	△ UPDATED THE STATIONING FOR LIGHT POLE 80 SHIFT				MOCCASIN WALLOW RD	6092560		L-9

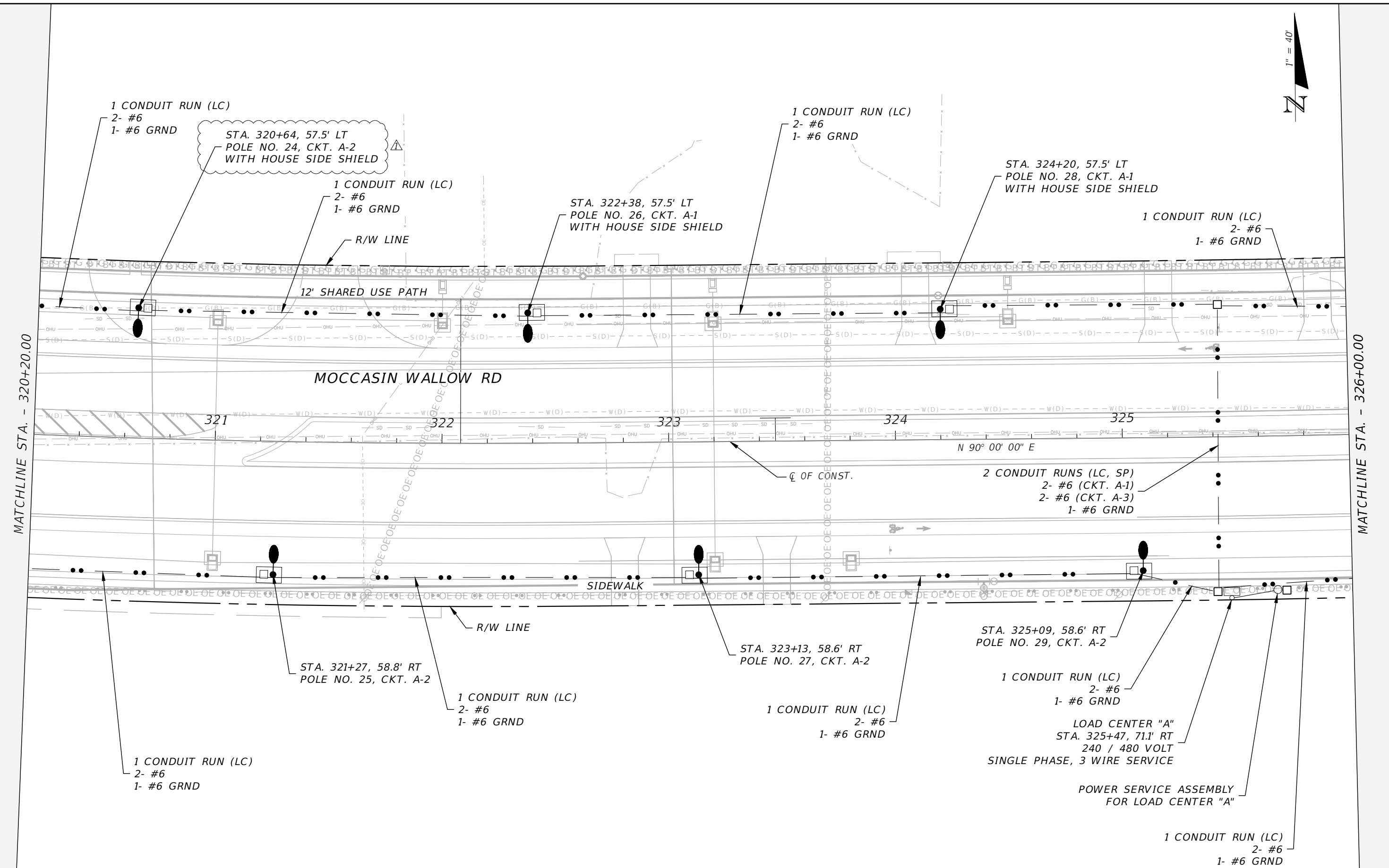


MATCHLINE STA. - 314+40.00

MATCHLINE STA. - 320+20.00

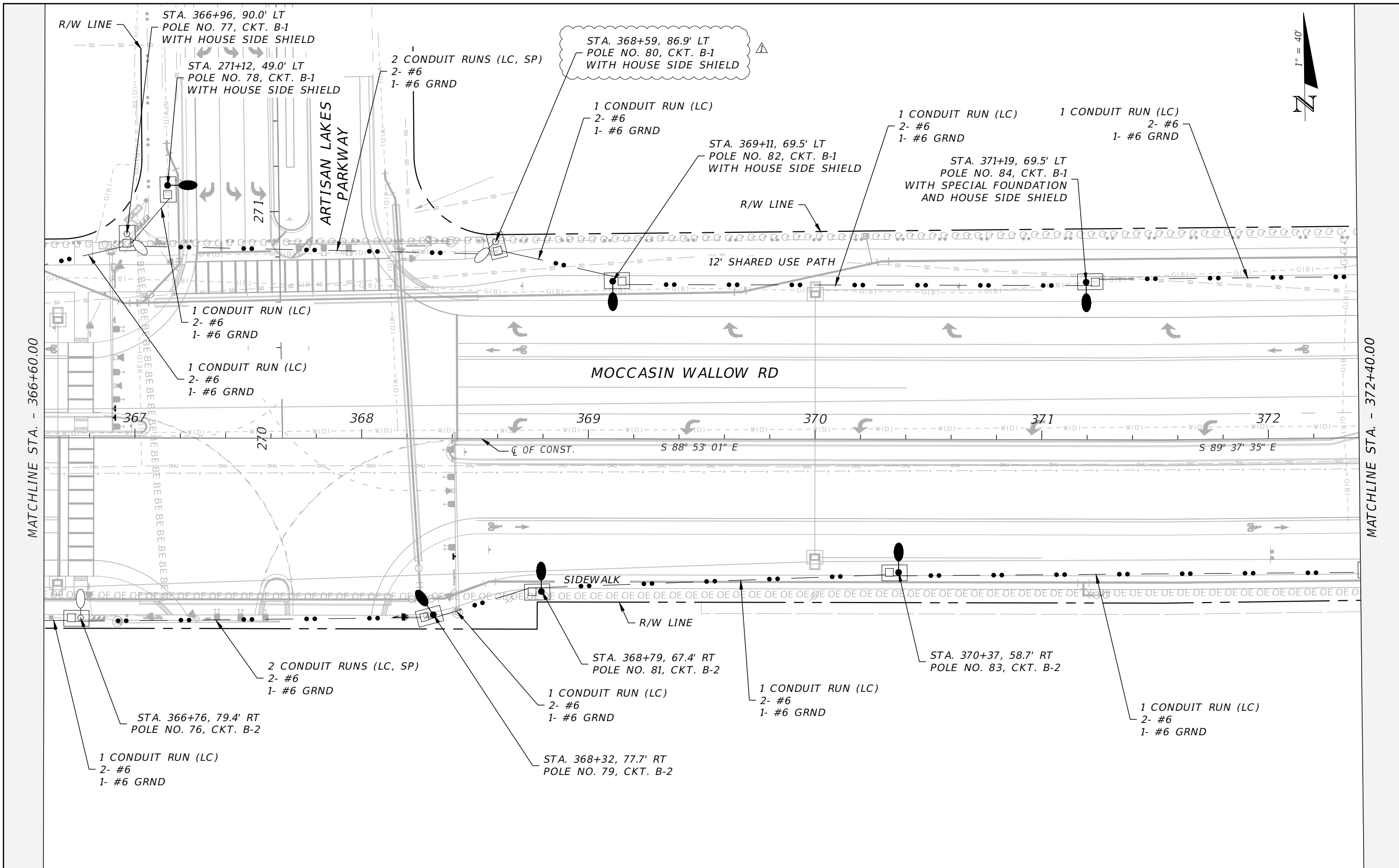
REVISIONS				DAVID J. ALLEN, P.E. P.E. LICENSE NUMBER 58540 CARDNO 3905 CRESCENT PARK DRIVE RIVERVIEW, FLORIDA 33578 CERTIFICATE OF AUTHORIZATION 29915	MANATEE COUNTY		LIGHTING PLAN (4)	SHEET NO. L-13
DATE	DESCRIPTION	DATE	DESCRIPTION		ROAD NO.	PROJECT ID		
7/11/22	SHIFT LIGHT POLE 22 TO EAST TO COMPENSATE FOR THE SHIFT TO LIGHT POLE 24			MOCCASIN WALLOW RD	6092560			

THE OFFICIAL RECORD OF THIS SHEET IS THE ELECTRONIC FILE DIGITALLY SIGNED AND SEALED UNDER RULE 61G15-23.004, F.A.C.



REVISIONS				DAVID J. ALLEN, P.E. P.E. LICENSE NUMBER 58540 CARDNO 3905 CRESCENT PARK DRIVE RIVERVIEW, FLORIDA 33578 CERTIFICATE OF AUTHORIZATION 29915	MANATEE COUNTY		SHEET NO. L-14
DATE	DESCRIPTION	DATE	DESCRIPTION		ROAD NO.	PROJECT ID	
7/11/22	SHIFT LIGHT POLE 24 TO EAST TO AVOID FUTURE EMS DRIVEWAY				MOCCASIN WALLOW RD	6092560	

THE OFFICIAL RECORD OF THIS SHEET IS THE ELECTRONIC FILE DIGITALLY SIGNED AND SEALED UNDER RULE 61G15-23.004, F.A.C.



THE OFFICIAL RECORD OF THIS SHEET IS THE ELECTRONIC FILE DIGITALLY SIGNED AND SEALED UNDER RULE 61G15-23.004, F.A.C.