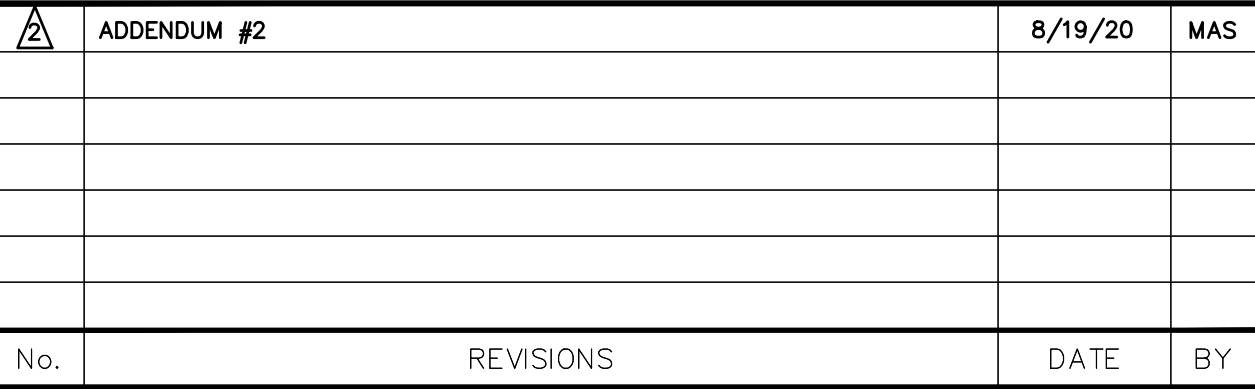


HERE CONCRETE REPAIRS ARE NECESSARY AND EXPANSION JOINTS ARE PRESENT, CONTRACTOR TO REMOVE AND REPLACE CONCRETE UP TO THE NEXT EXPANSION JOINT; OTHERWISE, REPLACE CONCRETE AS NECESSARY.

THE PRESENCE OF GROUNDWATER SHOULD BE ANTICIPATED ON THIS PROJECT. CONTRACTOR'S BID SHALL INCLUDE CONSIDERATION FOR THIS ISSUE. WHEN PERFORMING GRADING OPERATIONS DURING PERIODS OF WET WEATHER, PROVIDE ADEQUATE DEWATERING, DRAINAGE AND GROUND WATER MANAGEMENT TO CONTROL MOISTURE OF SOILS.



© 2019 KIMLEY-HORN AND ASSOCIATES, INC.  
100 2ND AVENUE SOUTH, SUITE 105N, ST. PETERSBURG, FL 33701  
PHONE: 727-547-3999  
WWW.KIMLEY-HORN.COM CA 00000696



FL DATE:

12