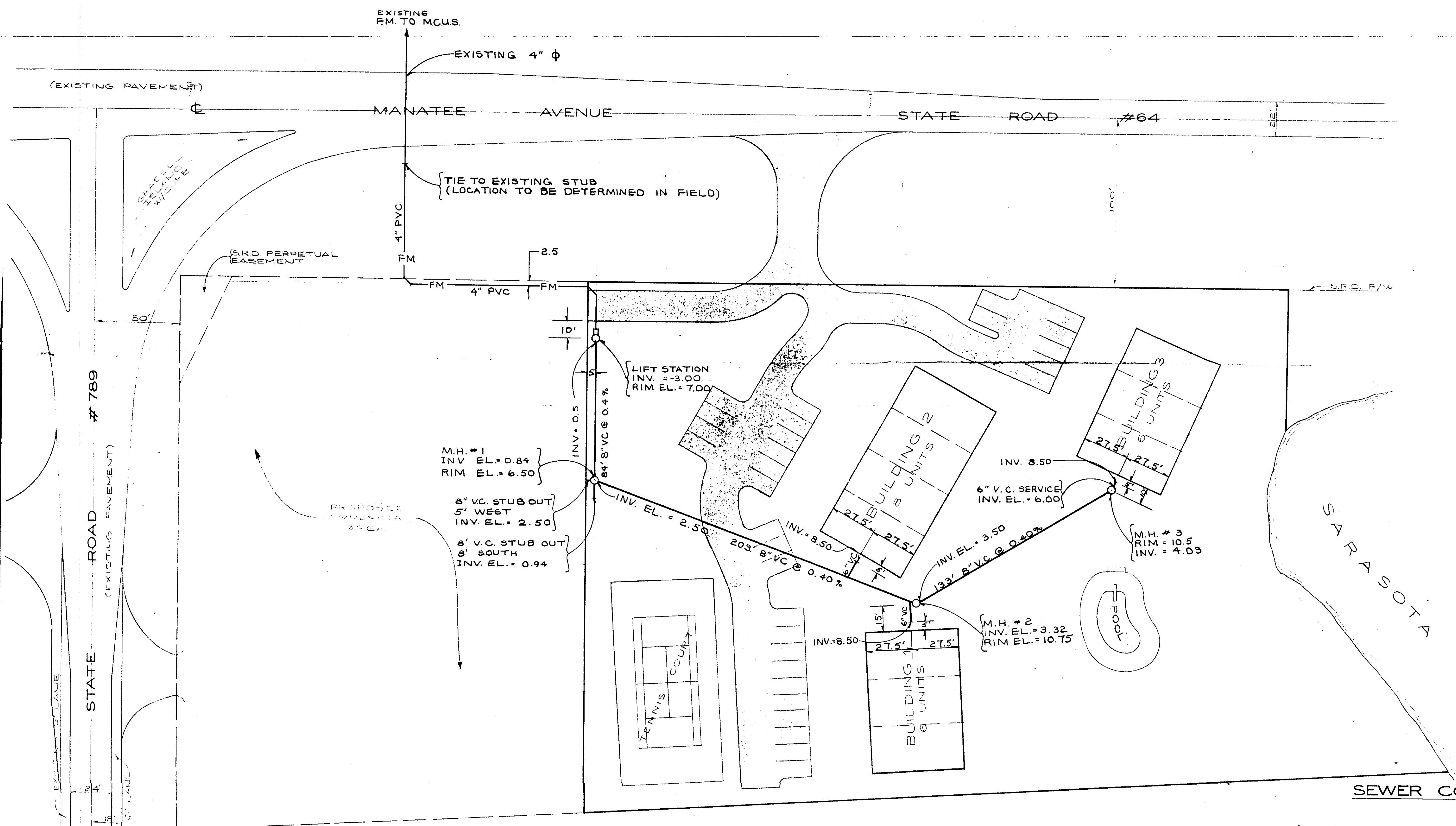


LOCATION MAP
SCALE: 1" = 1 MILE



SEWER COLLECTION SYSTEM
FOR
WESTBAY COVE SOUTH
CONDOMINIUM COMPLEX

IN
SEC. 28, TWP. 34 S., RGE. 16 E.
MANATEE COUNTY, FLORIDA

FOR: PATRICK K. NEAL & ASSOCIATES

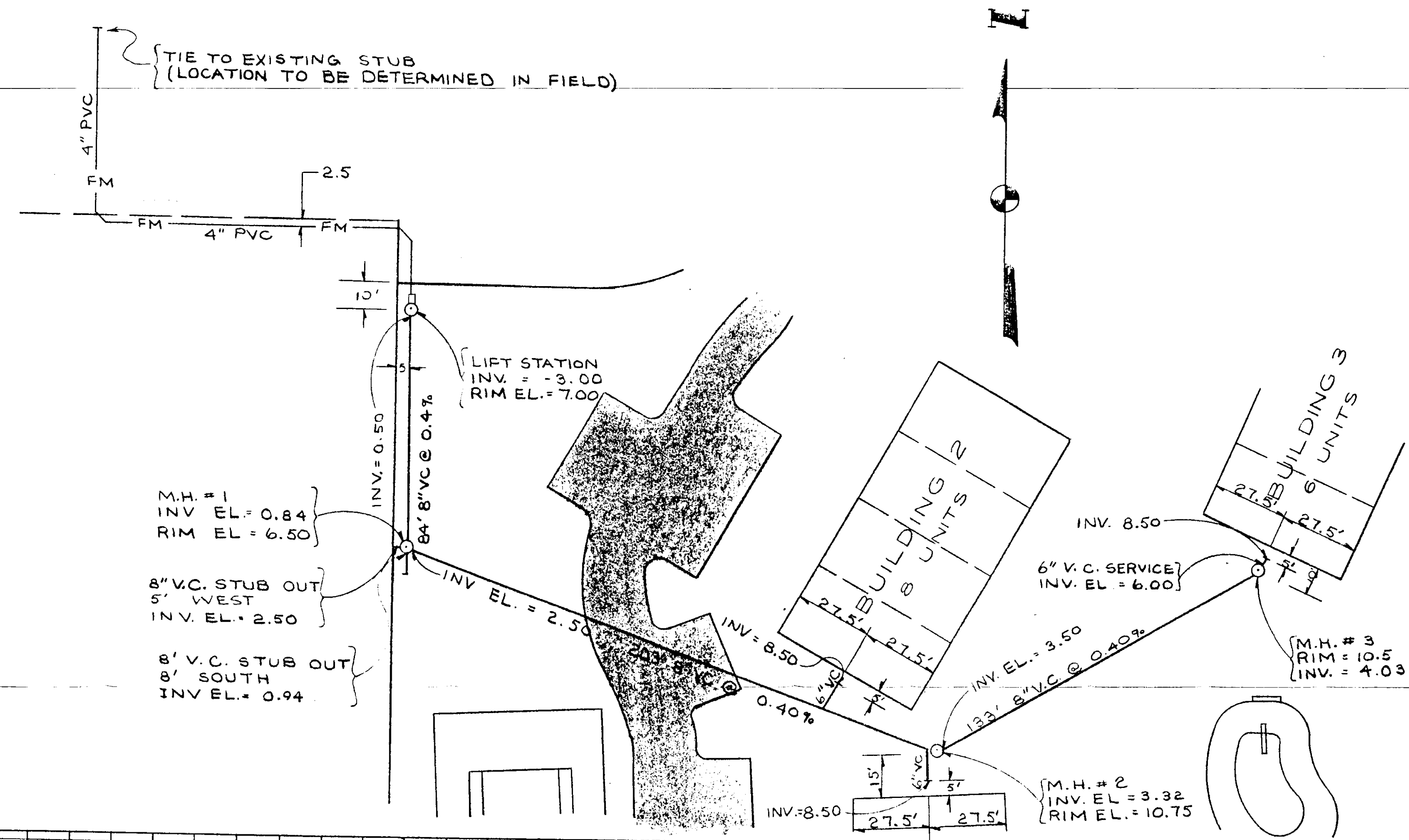
- NOTE:
- SEWER CONSTRUCTION TO BE STAKED IN THE FIELD BY OR UNDER THE DIRECTION OF A REGISTERED ENGINEER AND/OR LAND SURVEYOR.
 - UPON COMPLETION OF CONSTRUCTION THE CONTRACTOR SHALL SUBMIT AN AS-BUILT DRAWING TO M.C.U.S., MANATEE COUNTY HEALTH DEPT., ENGINEER, AND OWNER - DEVELOPER.
 - INDIVIDUAL LOT SERVICES TO BE 6" V.C. AS PER "SEWER CONSTRUCTION DETAILS" (SHEET 4 OF 4)

DESIGNED	D.C.Z.	DATE	8-1-76
DRAWN	Doty	JOB NO.	302
CHECKED	K.T.L.	SCALE	1" = 30'
APPROVED	D.C.Z.	SHEET	1 OF 4
REVISED			
1.		3.	
2.		4.	

DAN ZOLLER ENGINEERING, INC.
ENGINEERS AND PLANNERS
P.O. BOX 656
BRADENTON, FLORIDA 33506
PH. (813) 747-3038

MODEL BOOK ALIGNMENT CHILDED
 No. 11 OF WAY CHECKED

No. 11 OF WAY CHECKED
 STRUCTURE NOTATIONS CHECKED



SCALE
 VERTICAL = 1" = 2'
 HORIZONTAL = 1" = 30'

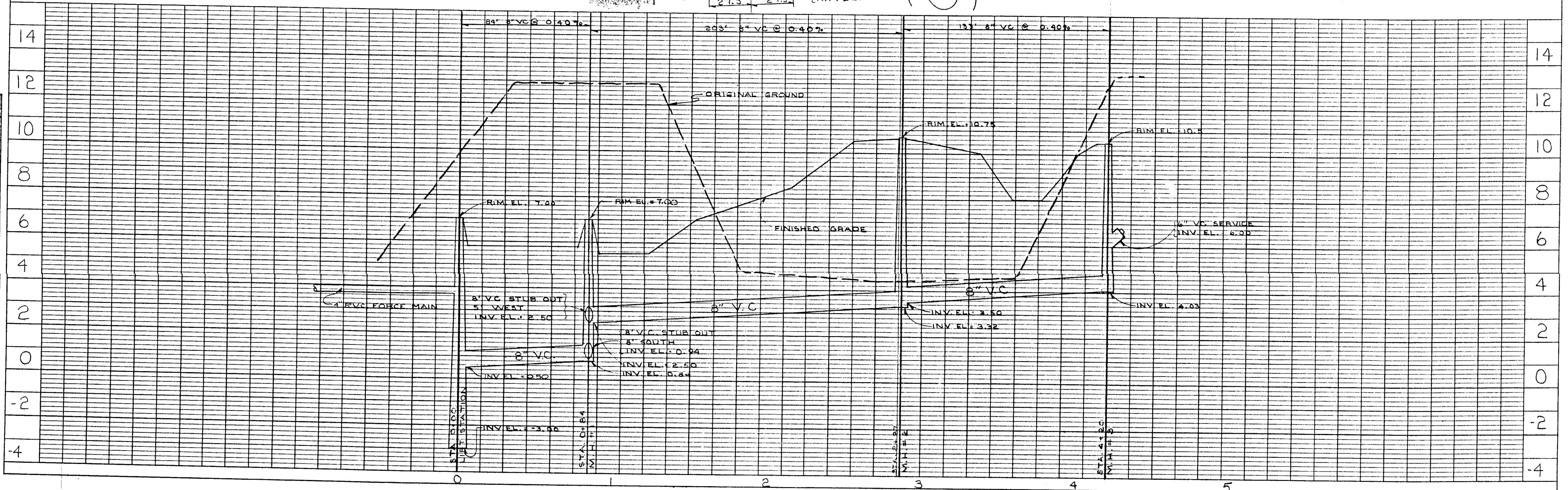


PLATE 1-SINGLE PLAN-PROFILE O.P.R. & S.E. STANDARD
 L. E. RIDGWAY CON. CO., INC.
 100% R.A. - MADE IN U.S.A.

SEWER CONSTRUCTION PLAN
 FOR
 WESTBAY COVE SOUTH