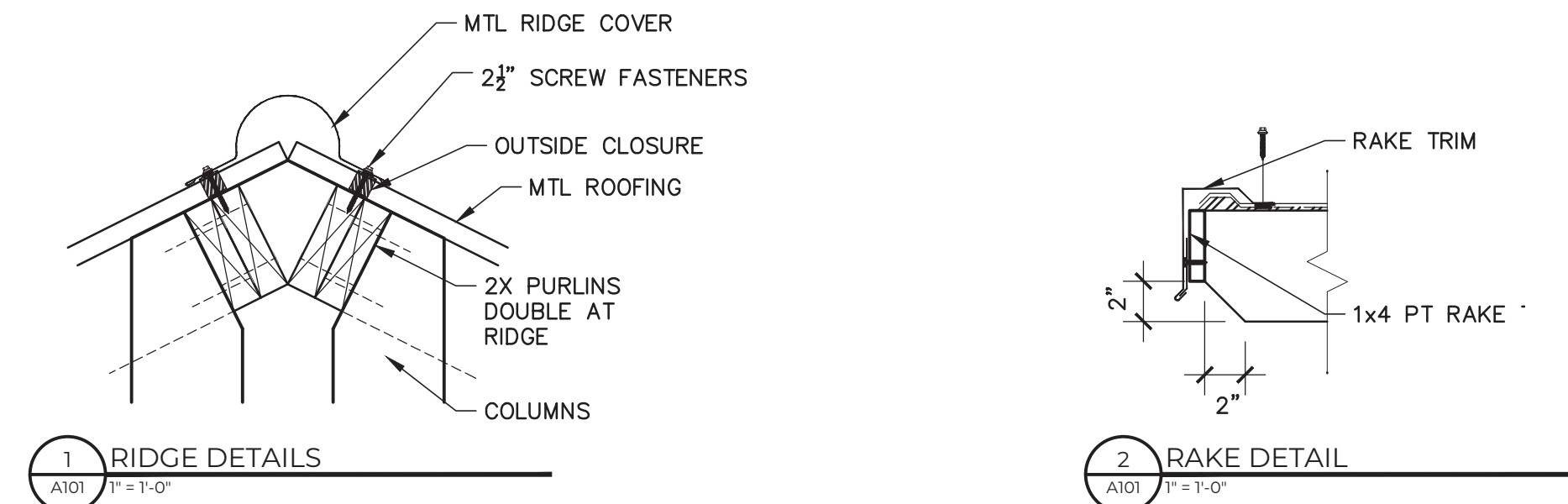
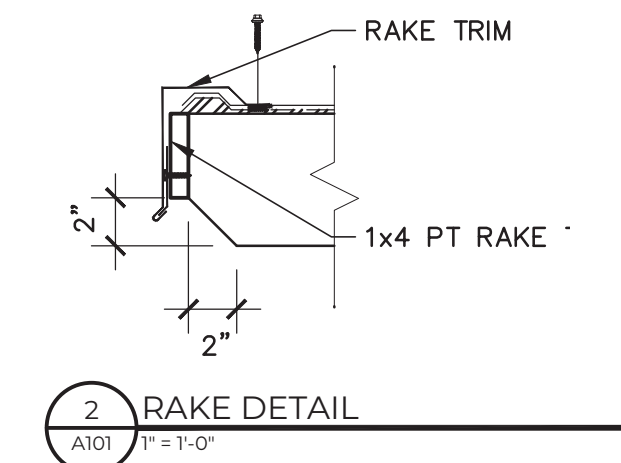


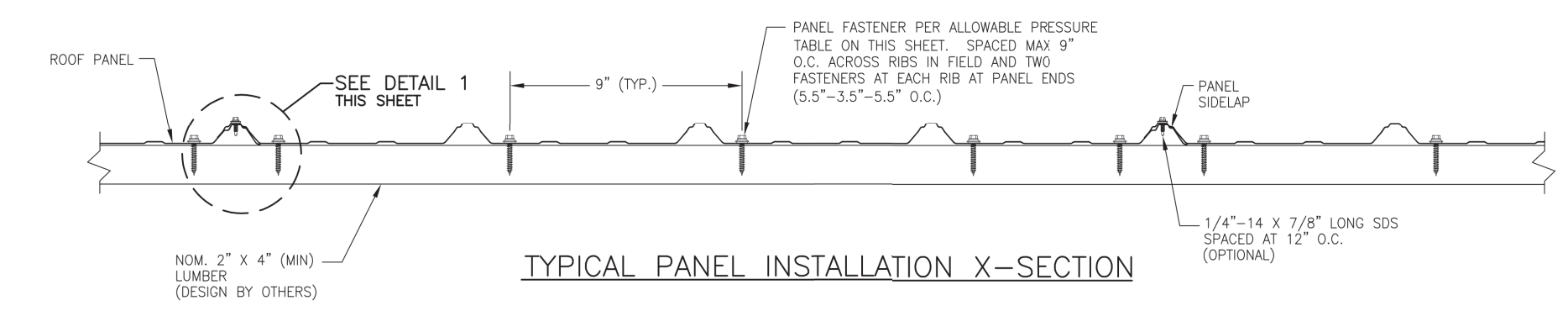
4 FRAMING PLAN
A101 1/4" = 1'-0"



1 RIDGE DETAILS
A101 1" = 1'-0"



2 RAKE DETAIL
A101 1" = 1'-0"

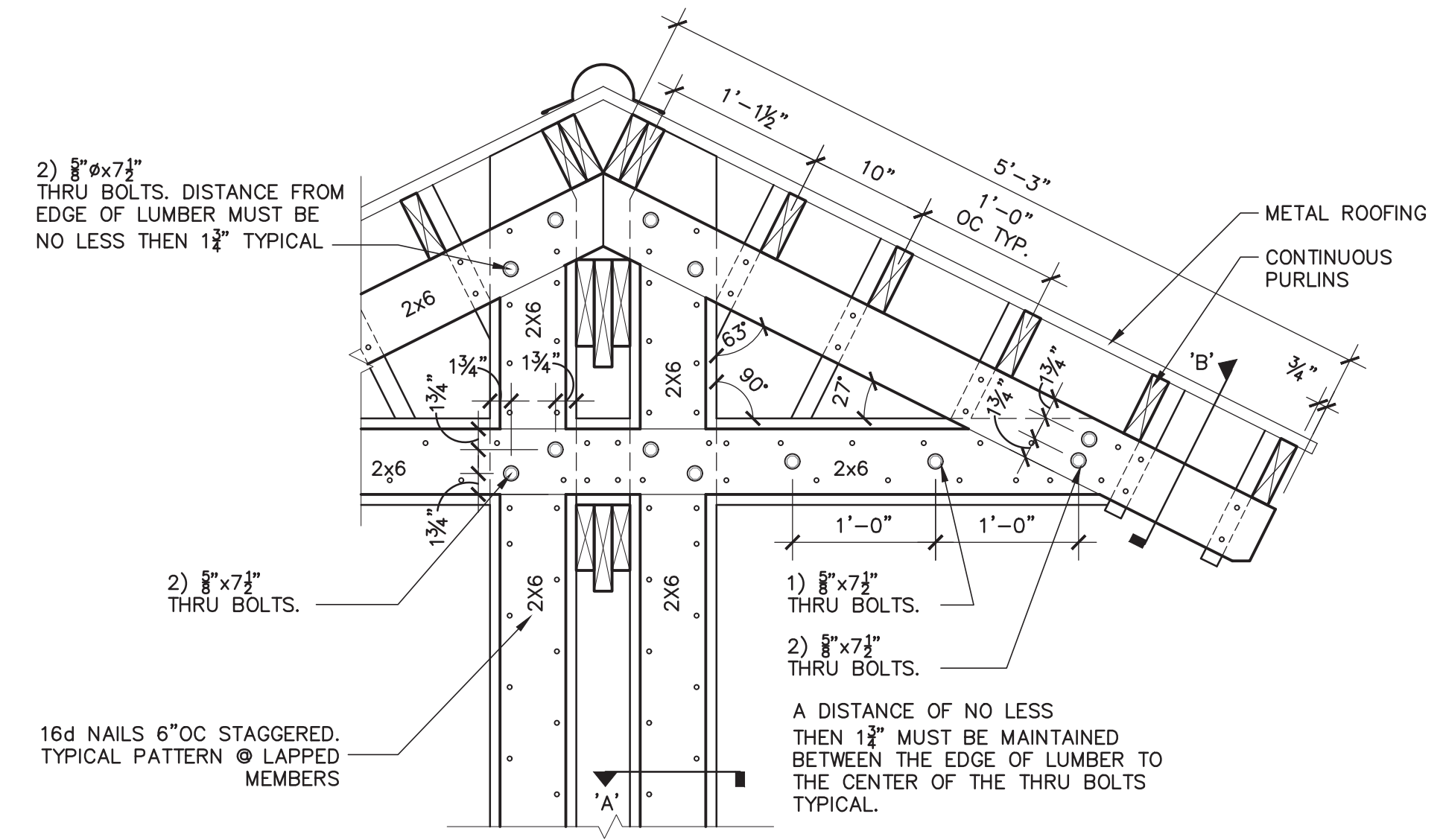
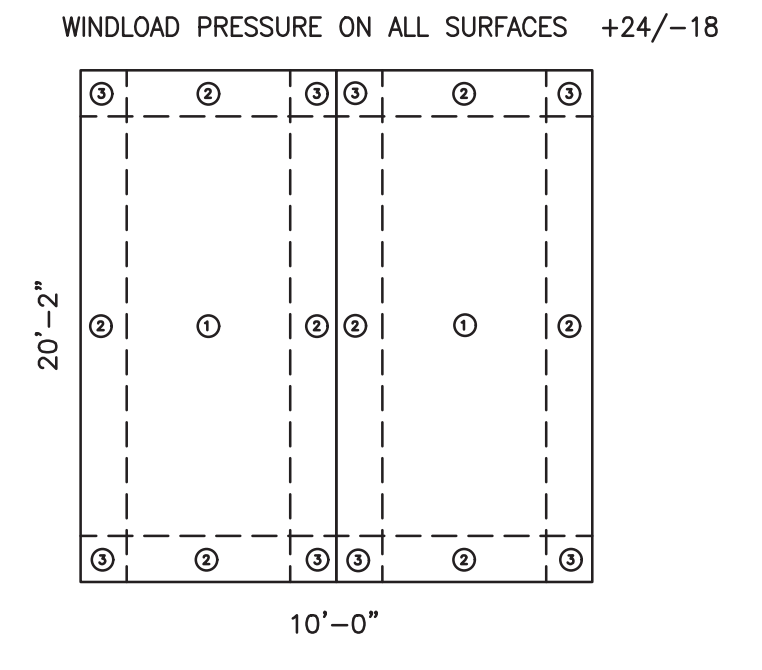


ALLOWABLE UPLIFT PRESSURE

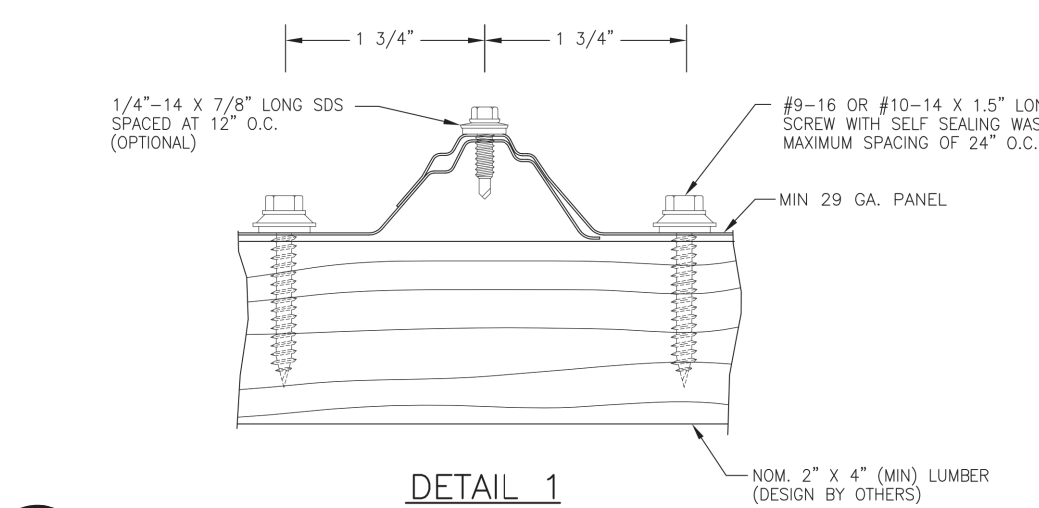
PANEL FASTENERS SPACING ALONG RB	PRESSURE (PSF)
24"	128.3

ROOF UPLIFT DIAGRAM
F.B.C. .6TH EDITION (2017)

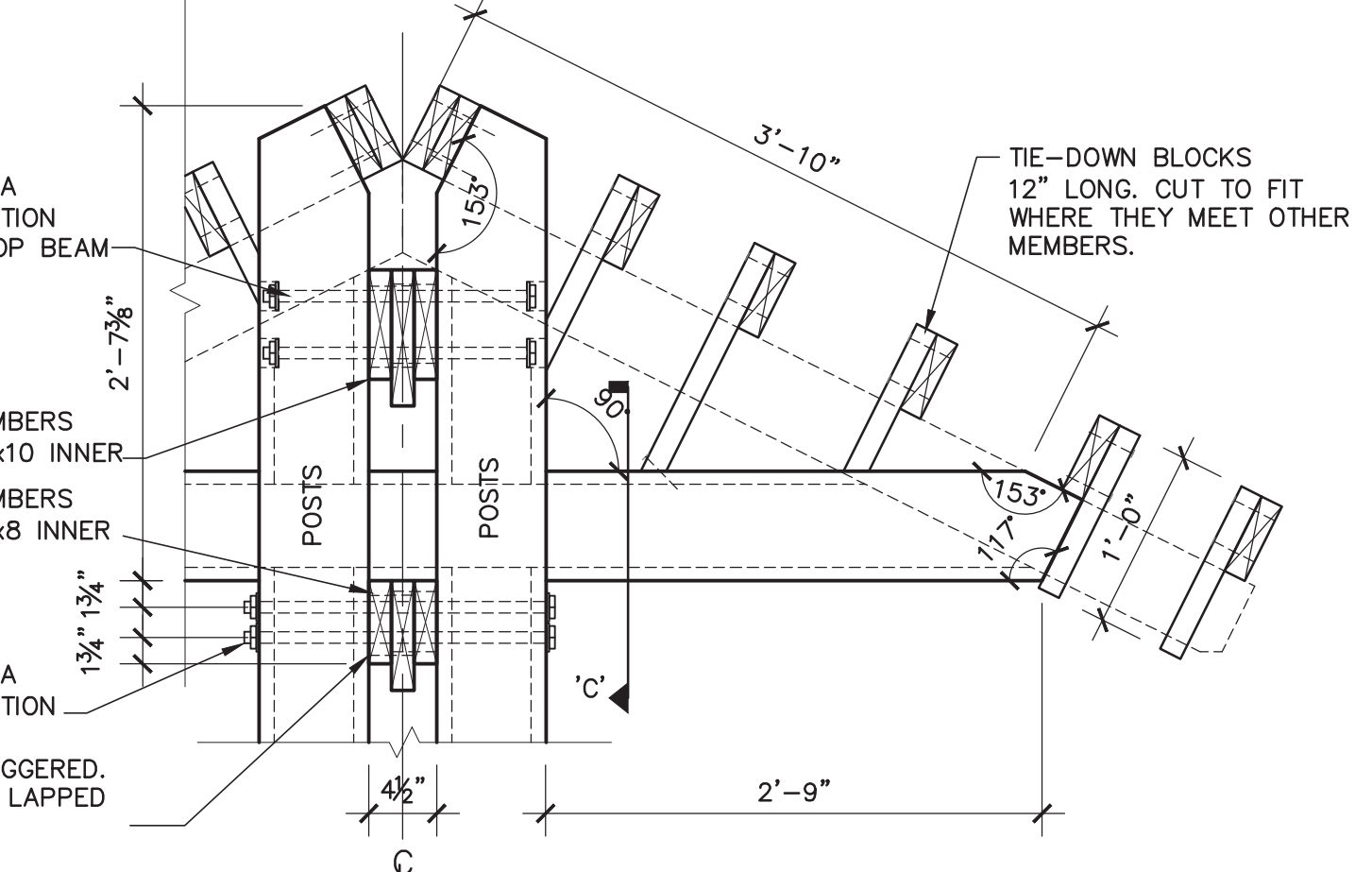
RISK CAT: 1 (T1604.3)
WIND SPEED = 140MPH ULT, 108 ASG (T1604.5)
EXPOSURE CATEGORY = C
BUILDING IS OPEN
INTERNAL PRESSURE COEF. = 0
HEIGHT = 9'
WIDTH = 20'
A = 3'.
DEAD LOAD = 15PSF



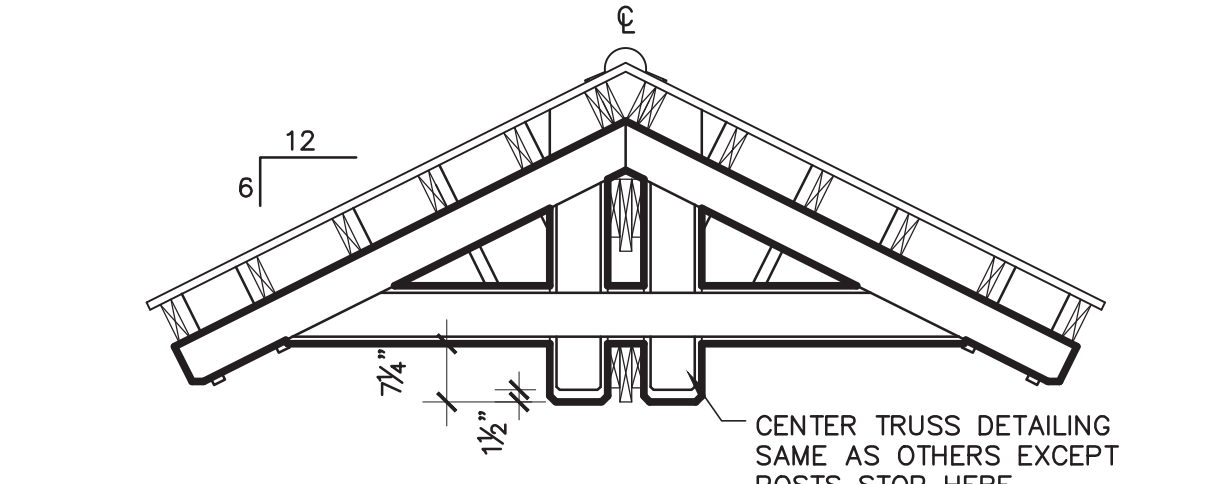
5 ENLARGED TRUSS DETAIL
A101 1" = 1'-0"



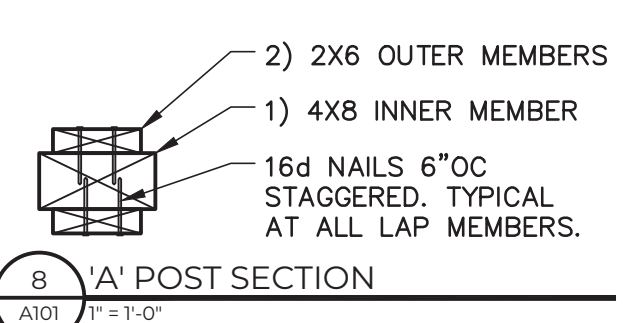
3 ROOF DETAIL
A101 1/16\"/>



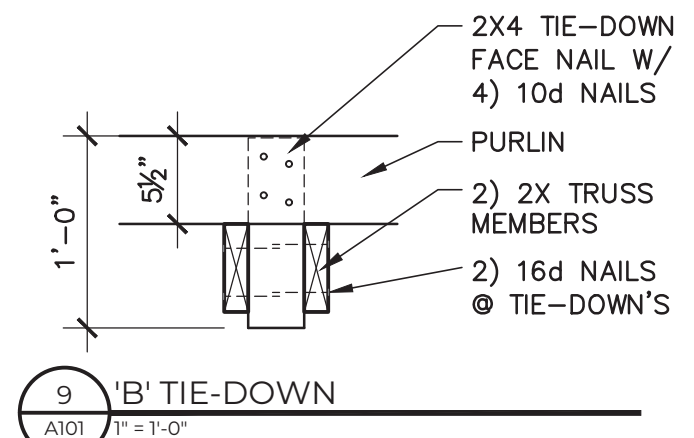
6 ENLARGED TRUSS DETAIL (INNER MEMBERS)
A101 1" = 1'-0"



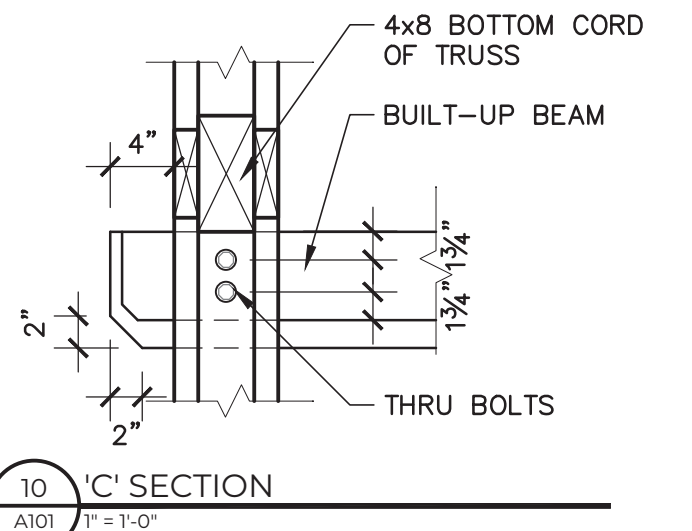
7 CENTER TRUSS ELEVATION
A101 1/2" = 1'-0"



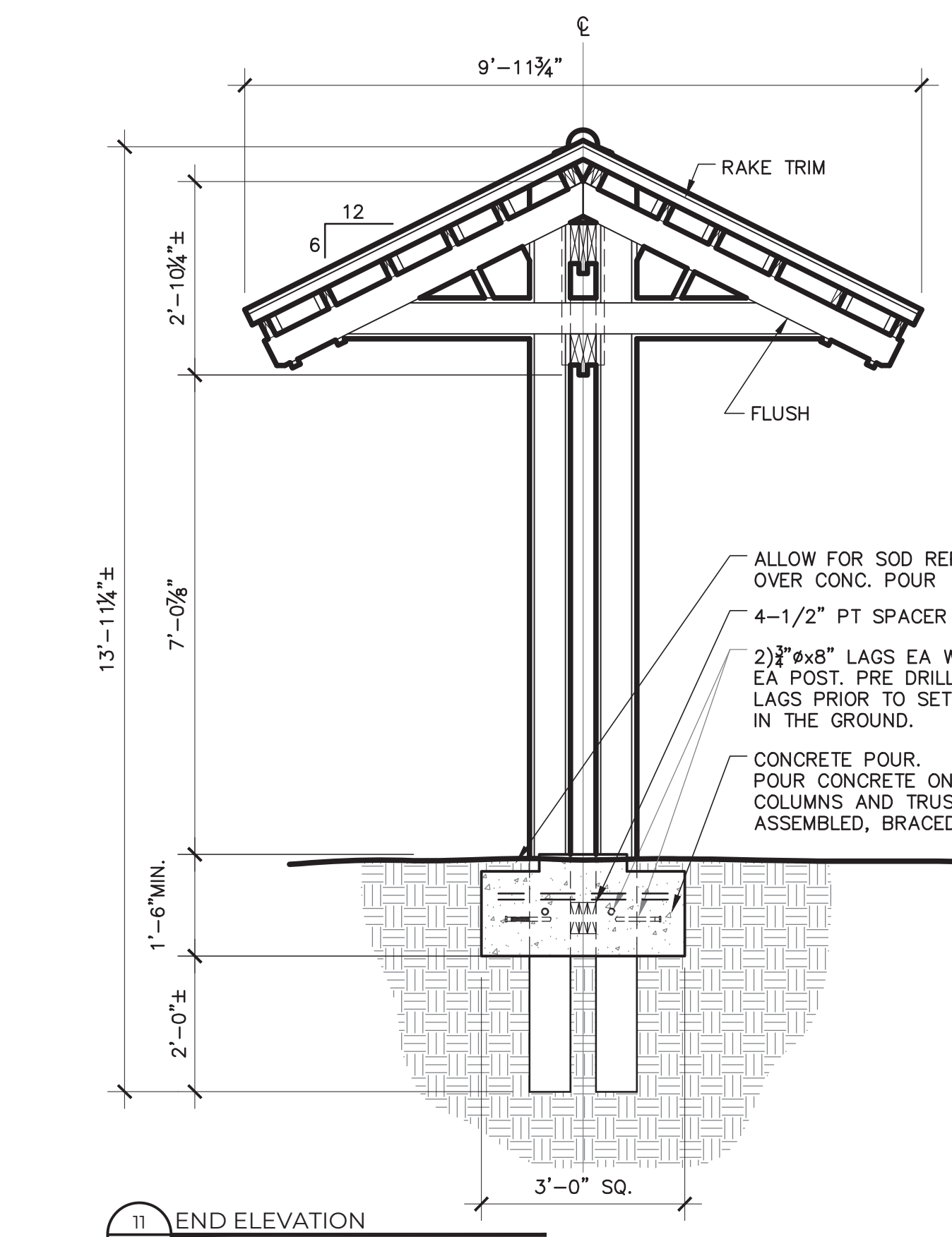
8 'A' POST SECTION
A101 1" = 1'-0"



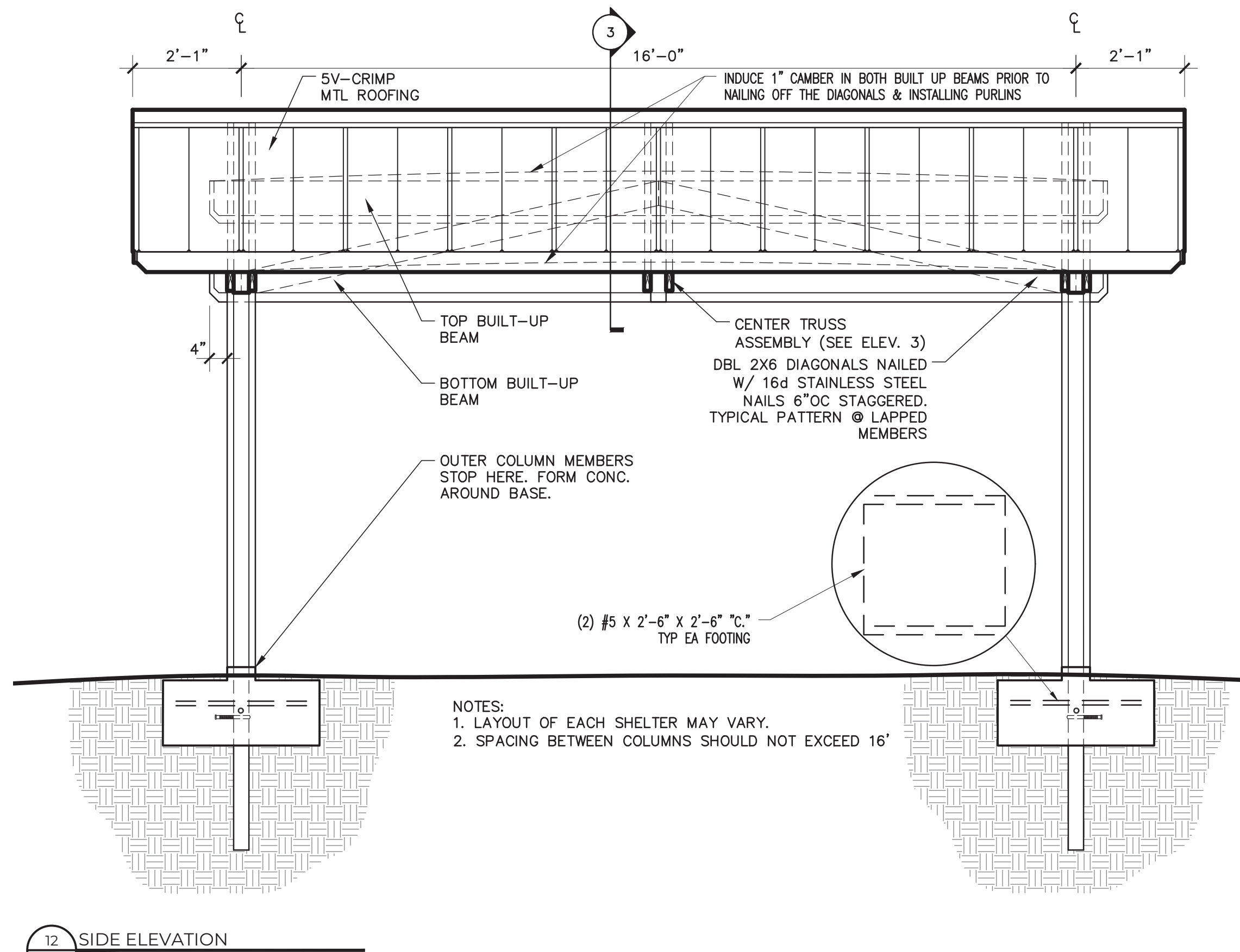
9 'B' TIE-DOWN
A101 1" = 1'-0"



10 'C' SECTION
A101 1" = 1'-0"



11 END ELEVATION
A101 1/2" = 1'-0"



12 SIDE ELEVATION
A101 1/2" = 1'-0"

GENERAL NOTES

GENERAL NOTES
1. DRAWINGS ARE NOT TO BE SCALED. CONTACT ARCHITECT FOR ANY DIMENSION NOT SHOWN.

CONCRETE
CONCRETE SHALL HAVE THE FOLLOWING ATTRIBUTES:
1. CONCRETE SHALL BE SUPPLIED IN ACCORDANCE WITH ACI 318 AND 613. MINIMUM COMPRESSIVE STRENGTH OF 3,000 PSI IN FOOTINGS AT 28 DAYS.
2. ALL REINFORCING BARS SHALL CONFORM TO ASTM 615, GRADE 60. ALL WELDED WIRE FABRIC SHALL CONFORM TO ASTM 185, AND A497 GRADE 60.
3. FLOOR SLABS SHALL BE KEPT WET FOR AT LEAST 7 DAYS CURING. Q3700 CONCRETE FINISHES: INTERIOR FLOOR SURFACES SHALL RECEIVE A SMOOTH STEEL TROWEL FINISH. EXTERIOR WALKWAYS SHALL RECEIVE A STEEL TROWEL FINISH FOLLOWED BY A LIGHT BROOM FINISH OR AS INDICATED ON DRAWINGS.

STRUCTURAL WOOD FRAMING
1. LUMBER TO BE PRESSURE TREATED AND DIMENSIONED AS INDICATED ON THE PLANS IN THE SIZE AND TYPES SHOWN. COLUMNS AND POSTS SHALL BE TREATED TO UC4C SERVICE (GROUND CONTACT, CRITICAL STRUCTURAL ELEMENT.)
2. ALL LUMBER SHALL BE GRADE SOUTHERN PINE #1 OR BETTER
3. ROOF PURLINS TO BE #1 UN-TREATED. IF PURLINS ARE TREATED, USE PEEL & STICK STRIP TO SEPARATE MTL PANEL FROM WOOD.

LUMBER QUALITY CONTROL
1. LUMBER DEFECTS SUCH AS WANE OR KNOTS MUST NOT OCCUR IN THE CONNECTION AREAS.
2. ALL WOOD MEMBERS SHALL BE ACCURATELY CUT AND FABRICATED SO THAT ALL MEMBERS HAVE GOOD BEARING AND A TOLERANCE OF 1/16" AT ALL CONNECTIONS.
3. ALL OUTER CORNERS OF MATERIAL SHALL HAVE A SOFTENED (CHAMFERED) EDGE OF 1/4".

HARDWARE
1. ALL NAILS SHALL BE STAINLESS STEEL AND SIZED AS INDICATED ON THE PLANS.
2. ALL BOLTS ARE TO BE STAINLESS STEEL AND SIZED AS INDICATED ON THE PLANS. EACH BOLT SHALL HAVE 2 OVERSIZED WASHERS AT THE NUT AND HEAD END.
3. ALTERNATE HOT DIP GALVANIZED BOLTS MAY BE CONSIDERED IF APPROVED BY THE COUNTY.

METAL ROOFING
1. METAL ROOFING PANELS SHALL BE METAL SALES CLASSIC RIB 29G GALVALUME W/ HUNTER GREEN EXT. ALL FASTENERS SHALL BE STAINLESS STEEL 'WOODGRIP' AS SPECIFIED BY MANUFACTURER.
2. ALL RAKE TRIM AND RIDGE CAPS ARE TO BE PROVIDED BY SAME MANUFACTURER AS ROOFING AND BE INSTALLED PER MFG SPECIFICATION AND THE PRODUCT APPROVAL.

PRODUCT APPROVAL LIST

APPROVAL No.	MFG	PRODUCT CATEGORY	PRODUCT MODEL # or NAME	PRESSURE		APPROVAL ENTITY	APPROVAL DATE
				DESIGN PRESSURE	MAX TEST PRESSURE		
FL-10999.4-R2	METAL SALES	ROOF	CLASSIC RIB 29G	+24/-18	NA/-128.3	FL	03/25/15

UA
UGARTE + ASSOCIATES
ARCHITECTURE | PLANNING | INTERIORS
434 9TH AVENUE WEST
PALMETTO, FLORIDA 34221
P: 941.728.5891 F: 941.728.5892
WWW.UGARTEARCHITECTURE.COM
-AAC001654-

SHELTER PLANS AND DETAILS

ROBINSON PRESERVE SHELTERS

REVISIONS

PROJECT NO: 2019-68
DATE: 12/18/2019
DRAWN BY: HB
CHK'D BY: CU

Digitally signed by carlos d. ugarte
Date: 2019.12.19 15:05:19
CARLOS D. UGARTE
LIC. NO. AR-0010725

SHEET
A101

12/19/2019 9:15 AM CAD FILE: A101_SHELTER_PLANS_AND_DETAILS.DWG