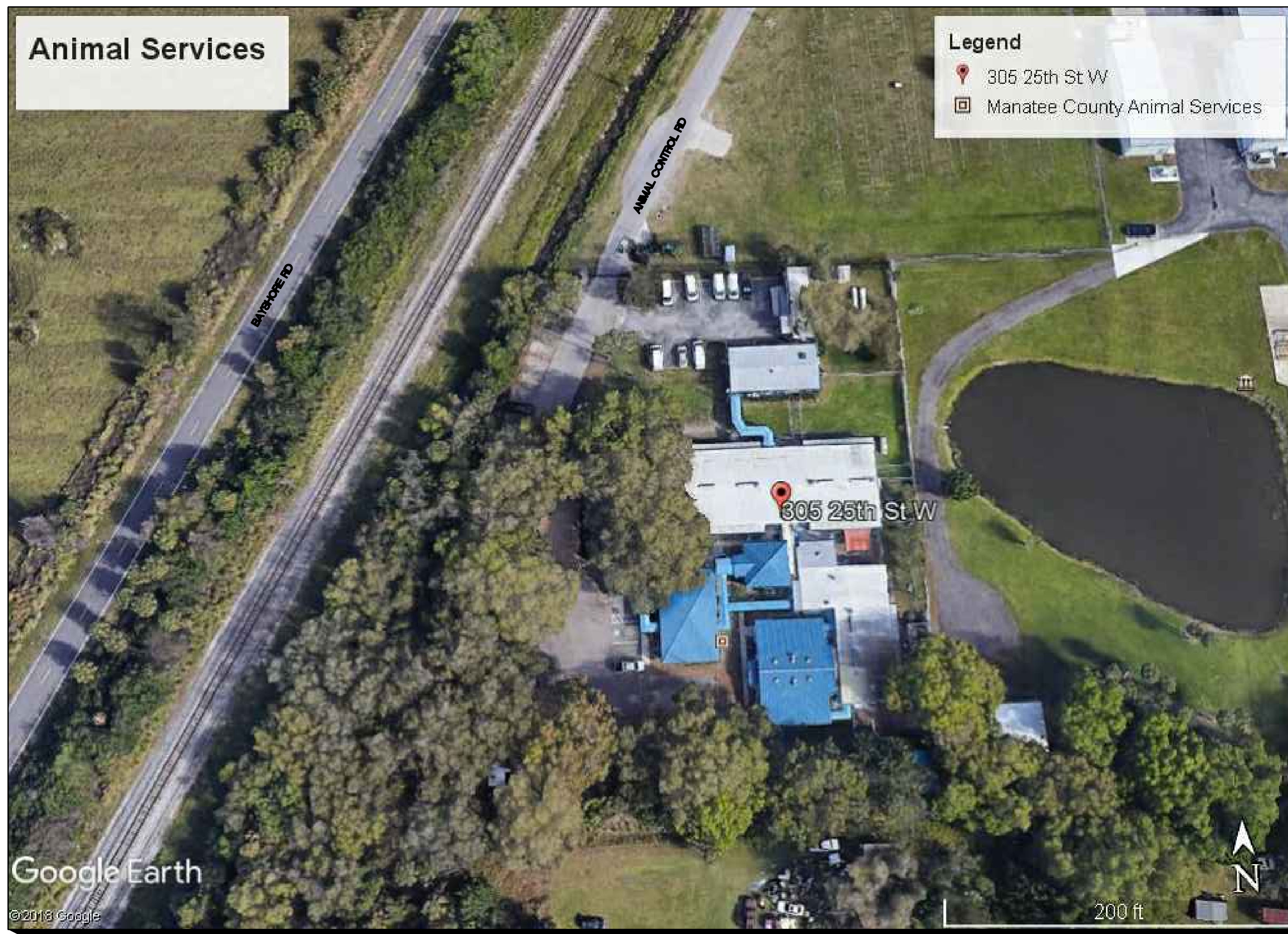


ANIMAL SERVICES OF MANATEE COUNTY STANDBY GENERATOR



AERIAL SITE VIEW of MANATEE COUNTY ANIMAL SERVICES

NOT TO SCALE



ELECTRIC NOTES

- CONTRACTOR SHALL BE QUALIFIED TO PERFORM THE WORK SPECIFIED HEREIN AND SHALL BE REGISTERED OR LICENSED IN ACCORDANCE WITH THE LOCAL JURISDICTION REQUIREMENTS.
- CONTRACTOR SHALL PROVIDE FOR AND ACQUIRE ALL NECESSARY PERMIT(S) AND INSPECTIONS AS MAY BE REQUIRED BY THE AUTHORITY(ES) HAVING JURISDICTION.
- INSTALLATION SHALL MEET OR EXCEED THE MINIMUM REQUIREMENTS OF THE APPLICABLE CODES IN FORCE OR ADOPTED BY THE AUTHORITIES HAVING JURISDICTION.
- NO CHANGE ORDERS - THE CONTRACTOR SHALL FURNISH ALL MATERIALS AND LABOR NECESSARY FOR THE INSTALLATION OF A COMPLETE AND FUNCTIONAL ELECTRICAL SYSTEM MEETING THE INTENDED PURPOSE OF THE PROJECT.
- COORDINATION - CONTRACTOR SHALL COORDINATE WORK WITH UTILITY AND OTHER CONTRACTORS AS NECESSARY. CONTRACTOR SHALL PREPARE SKETCH OF PROPOSED INSTALLATION TO ENSURE CLEARANCE REQUIREMENTS ARE MET AND EQUIPMENT FITS WITHIN PROPOSED AREA PRIOR TO PURCHASE AND INSTALLATION.
- THE CONTRACTOR SHALL MAKE A THOROUGH EXAMINATION OF THE SITE CONDITIONS AND CONTRACT DOCUMENTS.
- PRIOR TO COMMENCING WORK, THE CONTRACTOR SHALL COORDINATE WITH THE APPROPRIATE UTILITIES FOR METERING, TRANSFORMER AND SERVICE CONNECTION REQUIREMENTS.
- CONDUIT SHALL BE INSTALLED CONCEALED OR RECESSED IN A NEAT AND WORKMANLIKE MANNER. ALL CONDUIT SHALL BE INSTALLED PARALLEL OR PERPENDICULAR TO BUILDING LINES UNLESS OTHERWISE APPROVED BY OWNER. EXPOSED CONDUIT ON EXTERIOR WALLS OF FINISHED WALLS IS PROHIBITED UNLESS OTHERWISE REVIEWED AND APPROVED BY OWNER.
- CONDUIT SHALL BE EMT AND FITTINGS SHALL BE STEEL. FOR UNDERGROUND AND UNDER SLAB INSTALLATIONS, CONDUIT SHALL BE PVC OR IMC W/AN ASPHALTIC OR OTHER APPROVED CORROSION INHIBITING COATING.
- TO LIMIT WATER INTRUSION, SEAL ALL CONDUITS WHERE THE CONDUIT CONNECTS AN INTERIOR CONDUIT BODY TO AN EXTERIOR CONDUIT BODY OR LUMINAIRE.
- PROVIDE AN INDEPENDENT MEANS OF SUPPORT FOR CONDUIT INSTALLED ABOVE A CEILING WHERE THEY ARE DISTINGUISHABLE BY COLOR, TAGGING OR OTHER EFFECTIVE MEANS. THE CEILING SUPPORT SYSTEM SHALL BE PERMITTED TO SUPPORT BRANCH CIRCUIT WIRING WHERE INSTALLED IN ACCORDANCE WITH THE CEILING MANUFACTURER'S INSTRUCTIONS.
- PROVIDE AN INSULATED THROAT FITTING OR PLASTIC BUSHING FOR ALL 1" AND LARGER CONDUIT TERMINATIONS IN PANEL BOARDS, LOAD CENTERS, WIREWAYS AND DISCONNECT SWITCHES.
- PROVIDE GROUNDING BUSHINGS FOR ANY CONDUIT TERMINATIONS AT ECCENTRIC AND CONCENTRIC KNOCKOUTS IN DISCONNECTS, PANELBOARDS AND LOAD CENTERS OR WHEN REDUCING WASHERS ARE USED. BOND ALL JUNCTION AND PULL BOXES TO GROUND.
- WIRE/CABLES SHALL BE COPPER OR ALUMINUM AS ALLOWED BY CODE AND LISTED FOR THE INTENDED USE AND ENVIRONMENT. AMPACITIES ARE CALCULATED USING THE 75°C COLUMN.
- REFER TO BRANCH CIRCUIT SCHEDULE FOR MAXIMUM LENGTHS OF CONDUCTOR SIZE FOR HOMERUNS.
- ALL WIRING DEVICES SHALL BE TERMINATED AT THE SCREW IN A CLOCKWISE DIRECTION. THE PUSH-IN TERMINATIONS SHALL NOT BE USED.
- VERIFY DOOR SWINGS AND BACKSPLASH HEIGHTS AT ROUGH IN.
- STAGGER WALL BOXES IN ALL WALLS BY AT LEAST ONE STUD FOR SOUND ATTENUATION. APPLY NECESSARY FIRE PROOFING OR SOUND INSULATION AS REQUIRED OR AS LISTED ON ARCHITECTURAL PLANS.
- PROVIDE A TYPED PANEL SCHEDULE REFLECTING INSTALLED CONDITIONS FOR ALL PANEL BOARDS WITH "SPACE" OR "SPARE" PERMANENTLY WRITTEN.
- SUPPORT WIRES FOR ELECTRICAL EQUIPMENT SHALL BE FASTENED AT BOTH ENDS SO AS TO BE TAUT. INSTALLATION OF ELECTRICAL CABLES AND CONDUIT SHALL BE SUCH THAT UNDULATIONS ARE KEPT TO A MINIMUM.
- "TYPICAL" NOTES APPLY TO ALL SIMILAR SITUATIONS.
- PERMANENTLY LABEL ALL JUNCTION BOX COVERS WITH CIRCUITS DESIGNATION (SOURCE, PHASE, ETC.) CONTAINED WITHIN.
- AT CONCLUSION OF PROJECT, PROVIDE OPERATING, INSTALLATION INSTRUCTIONS, AND WARRANTY DOCUMENTS TO THE OWNER FOR ALL INSTALLED EQUIPMENT. OPERATING, INSTALLATION, AND WARRANTY DOCUMENTS SHALL BE BOUND TOGETHER WITH INDEX INDICATING WHERE TO FIND INFORMATION ON THE VARIOUS EQUIPMENT.
- PROVIDE THE APPROPRIATE FIRE STOP SYSTEM AND/OR FIRE CAULK AT ANY PENETRATION BETWEEN RATED ASSEMBLIES.
- CONDUIT TERMINATION AT NEMA3R ENCLOSURES SHALL BE WITH MYERS HUBS FOR TOP PENETRATIONS AND LIQUID TIGHT SEALING RINGS OR SEALING LOCKNUTS FOR SIDE PENETRATIONS.
- FOR ALL LED LUMINAIRES, PERMANENTLY MARK EACH FIXTURE WITH TAG #, MANUFACTURER, MODEL NUMBER, INSTALLATION DATE, INSTALLING CONTRACTOR AND LENGTH OF MANUFACTURER'S WARRANTY.
- COORDINATE INSTALLATION OF RECEPTACLES SHOWN ADJACENT TO MILLWORK WITH ARCHITECTURAL ELEVATIONS SO THEY ARE ACCESSIBLE. LOCATIONS SHOWN ON PLAN ARE DIAGRAMMATIC.
- INSTALL ELECTRICAL HARDWARE SUPPORTING ELECTRICAL FED AND OTHER EQUIPMENT IN ACCORDANCE WITH THE WEIGHT REQUIREMENTS OF THE EQUIPMENT, FIXTURE, APPLIANCE, ETC.
- ALL CONDUCTORS SHALL BE COLOR CODED AS FOLLOWS.

	120/208V	277/480V
PHASE A	BLACK	BROWN
PHASE B	RED	ORANGE
PHASE C	BLUE	YELLOW

SCOPE OF WORK

CONTRACTOR'S RESPONSIBILITY INCLUDES BUT IS NOT LIMITED TO THE FOLLOWING. CONTRACTOR SHALL PERFORM THIS WORK AND ADDITIONAL STEPS/ WORK NECESSARY TO ACCOMPLISH THE COMPLETE AND FUNCTIONAL INSTALLATION OF EMERGENCY AC RECEPTACLES AND NEW CAMPUS EMERGENCY GENERATOR FOR THE ANIMAL SERVICES FACILITY IN MANATEE COUNTY:

- REVIEW SITE TO BECOME FAMILIAR WITH THE WORK
- COORDINATE WORK WITH ELECTRIC UTILITY AS NECESSARY
- COORDINATE WORK AND ANY NECESSARY OUTAGES WITH COUNTY PERSONNEL ASSIGNED TO THE PROJECT
- COORDINATE WITH LOCAL JURISDICTION AS REQUIRED
- REVIEW EQUIPMENT PLACEMENT AND SIZE TO ENSURE EQUIPMENT FITS WITHIN DESIGNATED AREA AND PROPER CLEARANCES ARE MAINTAINED
- PROVIDE AND INSTALL NEW GENERATOR AND RELATED EQUIPMENT AS DETAILED WITHIN THE PLANS AND IN COMPLIANCE WITH LOCAL CODES
- INSTALL EMERGENCY AC RECEPTACLES THROUGHOUT AS NOTED
- TRACE/VERIFY CIRCUIT ORIGIN AND PERMANENTLY LABEL PANELS, DISCONNECTS AND MAIN CIRCUITS
- PERMANENTLY LABEL ALL PANELS AND DISCONNECTS WITH PHENOLIC LABELS
- TEST SYSTEM TO ENSURE ITS ADEQUACY

DRAWING INDEX

- E-0.0 LEGEND, ABBREVIATIONS AND GENERAL NOTES
- E-1.1 EXISTING ELECTRICAL SITE PLAN
- E-1.2 PROPOSED ELECTRICAL SITE PLAN
- E-2.1 EXISTING RISER
- E-2.2 PROPOSED RISER AND CALCULATIONS
- E-3.0 EXISTING CONDITIONS

APPLICABLE CODES

- NFPA 1, UNIFORM FIRE CODE, FL EDITION
- NFPA 20, 2013 FIRE PUMPS
- NFPA 70, 2014 NATIONAL ELECTRICAL CODE
- NFPA 72, 2013 FIRE ALARM & SIGNALING
- NFPA 101, 2015 LIFE SAFETY CODE, FL EDITION
- NFPA 110, 2013 EMERGENCY & STANDBY SYSTEMS
- NFPA 720, 2015 CARBON MONOXIDE DETECTION
- NFPA 780, 2014 LIGHTNING PROTECTION
- 2017 6TH EDITION FLORIDA BUILDING CODE

ABBREVIATIONS

A	AMPERE
AC	ABOVE COUNTER
AF	AMPERE FRAME
AFCI	ARC FAULT CIRCUIT INTERRUPTER
AF	ABOVE FINISHED FLOOR
AHU	AIR HANDLING UNIT
AIC	AMPERAGE INTERRUPTING CAPACITY
AL	ALUMINUM
ATS	AUTOMATIC TRANSFER SWITCH
AV	AUDIO VISUAL
AWG	AMERICAN WIRE GAUGE
BOB	BOTTOM OF BOX
C	CONDUIT
CAT	CATEGORY
CB	CIRCUIT BREAKER
CH	CHILLER
CKT	CIRCUIT
CL	CENTER LINE
CLG	CEILING
COB	CENTER OF BOX
CJ	COPPER
DEG	DEGREE
DS	DISCONNECT SWITCH
EG	EQUIPMENT GROUND BAR
EC	ELECTRICAL CONTRACTOR
EF	EXHAUST FAN
EM	EMERGENCY
EMT	ELECTRICAL METALLIC TUBING
ENCL	ENCLOSURE
EW	ELECTRIC WATER HEATER
EX	EXISTING
FA	FIRE ALARM
FBO	FURNISHED BY OTHERS
FCP	FIRE ALARM CONTROL PANEL
FCC	FIRE CONTROL CENTER
FATC	FIRE ALARM TERMINAL CABINET
FO	FIBER OPTIC
CFIC	GROUND FAULT CIRCUIT INTERRUPTER
G	GROUND
HOA	HAND-OFF-AUTOMATIC
HACR	HEATING/AIR CONDITIONING RATED
HFP	HIGH POWER FACTOR
HP	HORSEPOWER
HPS	HIGH PRESSURE SODIUM
IG	ISOLATED GROUND
IPTV	INTERNET PROTOCOL TELEVISION
J	JUNCTION BOX
JCMIL	THOUSAND CIRCULAR MILLS
KVA	KILOVOLT AMPERER
KW	KILOWATT
MCB	MAIN CIRCUIT BREAKER
MCC	MOTOR CONTROL CENTER
MDU	A/V & WIFI CABINET
MDP	MAIN DISTRIBUTION PANEL
MLO	MAINT LUGS ONLY
MTD	MOUNTED
MTS	MANUAL TRANSFER SWITCH
MW	MICROWAVE
NA	NOT APPLICABLE
NC	NORMALLY CLOSED
NEC	NATIONAL ELECTRICAL CODE
NEMA	NATIONAL ELECTRICAL MANUF. ASSOC.
NF	NON FUSED
NFPA	NATIONAL FIRE PROTECTION ASSOCIATION
NIC	NOT IN CONTRACT
NL	NIGHT LIGHT
NO	NORMALLY OPEN
NTE	NOT TO EXCEED
PB	PUSHBUTTON
PC	PHOTOCELL
Ø	PHASE
POE	POWER OVER ETHERNET
P&I	PROVIDE AND INSTALL
PNL	PANEL
POTS	PLAIN OLE TELEPHONE SYSTEM
PVC	POLY VINYL CHLORIDE
RGS	RIGID GALVANIZED STEEL
SCA	SHORT CIRCUIT AMPS
SG	SINGLE GANG
SPD	SURGE PROTECTIVE DEVICE
STP	SHIELDED TWISTED PAIR
STR	STRANDED
SW	SWITCH
SWBD	SWITCHBOARD
TC	TIME CLOCK
TOB	TOP OF BOX
TP	TWISTED PAIR
TR	TAMPER RESISTANT
TS	TIME SWITCH
TYP	TYPICAL
UC	UNDER COUNTER
UG	UNDERGROUND
UH	UNIT HEATER
UPS	UNINTERRUPTIBLE POWER SUPPLY
UON	UNLESS OTHERWISE NOTED
VAV	VARIABLE AIR VOLUME
V	VOLT
WP	WEATHERPROOF
WR	WEATHER RESISTANT
XFMR	TRANSFORMER
ZG	TWO GANG

DRAWING REVISIONS

REVISION	COMMENTS
△	
△	
△	
△	
△	
△	

ANIMAL SERVICES
MANATEE COUNTY
GENERATOR PROJECT
305 25TH ST. W
PALMETTO, FL 34221

DRAWING TITLE :
LEGEND, ABBREVIATIONS
AND GENERAL NOTES
Drawing Progress: BID DOCUMENTS (final)

FILE NAME:	191100_E-0.WG
DATE:	11/21/2019
PLOT SIZE:	36X24
CADDED BY:	SS
DESIGNED BY:	JO
CHECKED BY:	LV

PROJECT NO.
191100
SHEET NO.

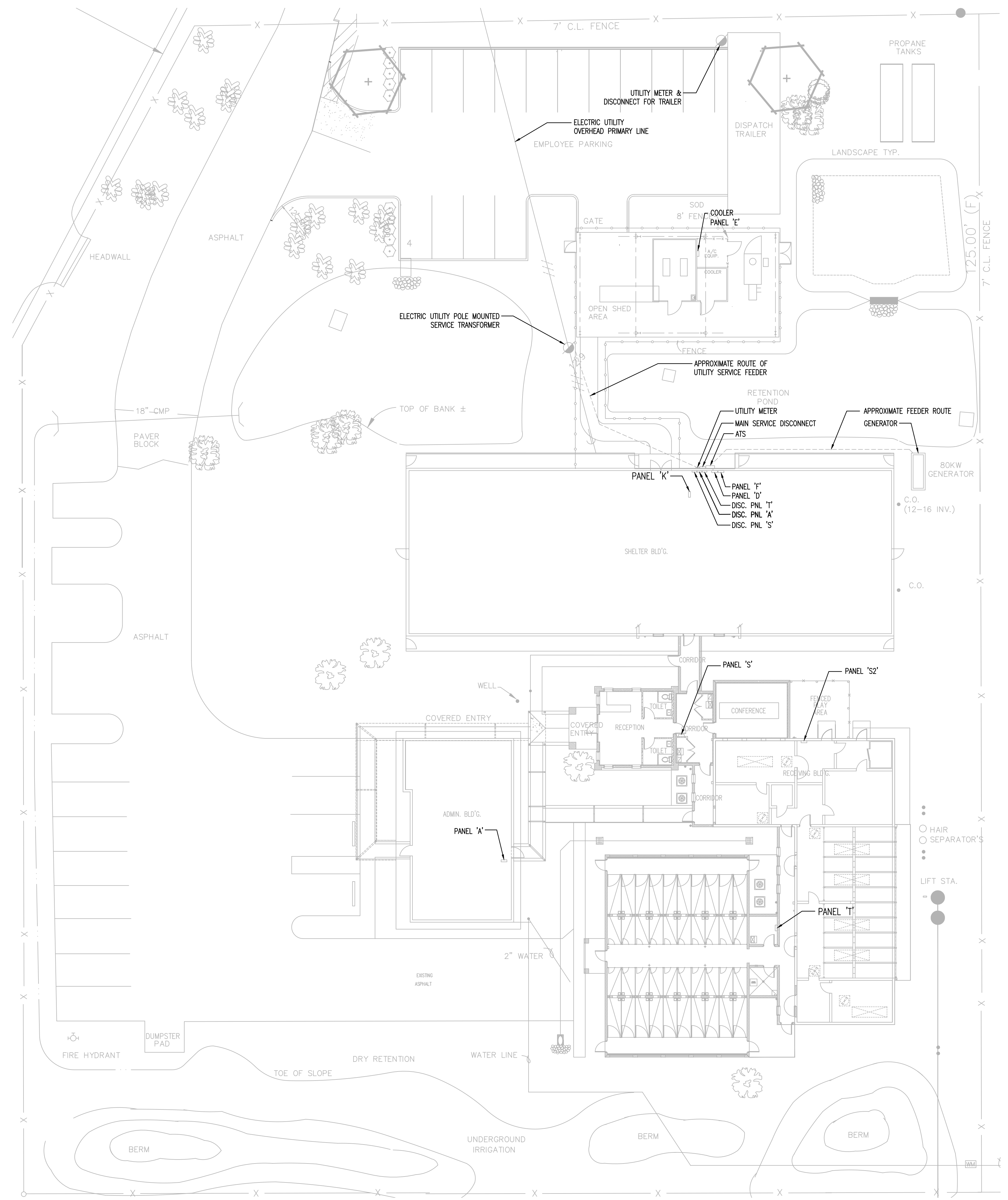
E-0.0

SEAL

LUIS G. VARGAS JR., P.E.
 FL. Lic. No. 52139 Exp 02-28-2021

DRAWING REVISIONS

REVISION	COMMENTS
△	
△	
△	
△	
△	



ELECTRICAL EXISTING SITE PLAN

SCALE: 1" = 20'

**ANIMAL SERVICES
 MANATEE COUNTY
 GENERATOR PROJECT**
 305 25TH ST. W
 PALMETTO, FL 34221

DRAWING TITLE :
 EXISTING ELECTRICAL SITE PLAN
Drawing Progress: BID DOCUMENTS (final)

FILE NAME: 191100_E-1.DWG
DATE: 11/21/2019
PLOT SIZE: 36X24
CADDED BY: SS
DESIGNED BY: JO
CHECKED BY: LV

PROJECT NO.
 191100
SHEET NO.

E - 1.1

REVISION	COMMENTS
△	
△	
△	
△	
△	
△	
△	

**ANIMAL SERVICES
 MANATEE COUNTY
 GENERATOR PROJECT**

305 25TH ST. W
 PALMETTO, FL 34221

DRAWING TITLE :
PROPOSED ELECTRICAL SITE PLAN
 Drawing Progress: BID DOCUMENTS (final)

FILE NAME: 191100_E-1.WG
 DATE: 11/21/2019
 PLOT SIZE: 36X24
 CADD BY: SS
 DESIGNED BY: JQ
 CHECKED BY: LV
 PROJECT NO.
 191100
 SHEET NO.

E-1.2

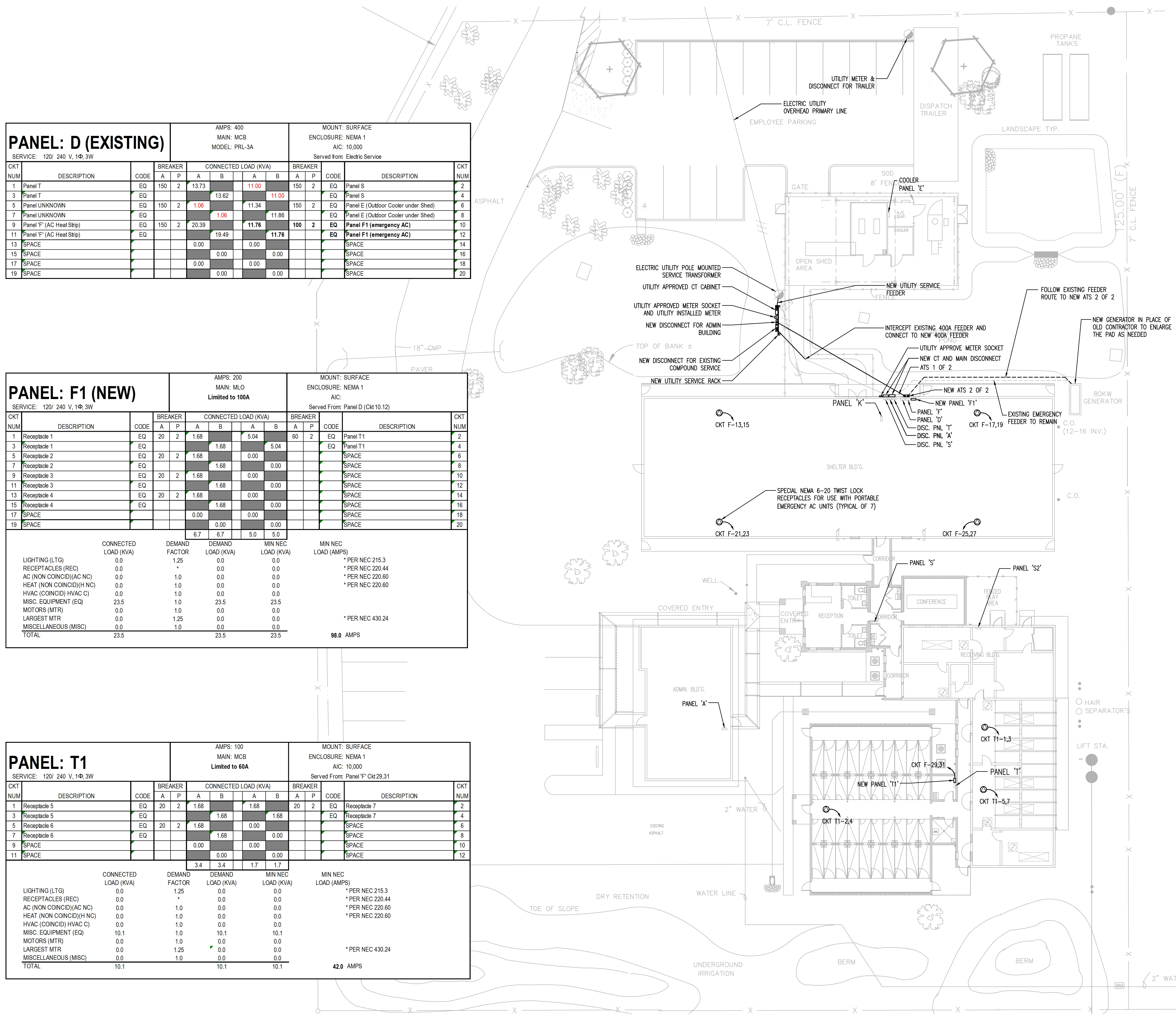
PANEL: D (EXISTING)			AMPS: 400 MAIN: MCB MODEL: PRL-3A				MOUNT: SURFACE ENCLOSURE: NEMA 1 AIC: 10,000 Served from: Electric Service						
CKT NUM	DESCRIPTION	CODE	BREAKER		CONNECTED LOAD (KVA)		BREAKER		CODE	DESCRIPTION	CKT NUM		
			A	P	A	B	A	P					
1	Panel T	EQ	150	2	13.73				150	2	EQ	Panel S	2
3	Panel T	EQ				13.62					EQ	Panel S	4
5	Panel UNKNOWN	EQ	150	2	1.06				150	2	EQ	Panel E (Outdoor Cooler under Shed)	6
7	Panel UNKNOWN	EQ				1.06					EQ	Panel E (Outdoor Cooler under Shed)	8
9	Panel F (AC Heat Strip)	EQ	150	2	20.39				100	2	EQ	Panel F1 (emergency AC)	10
11	Panel F (AC Heat Strip)	EQ				19.49					EQ	Panel F1 (emergency AC)	12
13	SPACE				0.00						SPACE		14
15	SPACE				0.00						SPACE		16
17	SPACE				0.00						SPACE		18
19	SPACE				0.00						SPACE		20

PANEL: F1 (NEW)			AMPS: 200 MAIN: MLO Limited to 100A				MOUNT: SURFACE ENCLOSURE: NEMA 1 AIC: Served From: Panel D (Ckt 10,12)						
CKT NUM	DESCRIPTION	CODE	BREAKER		CONNECTED LOAD (KVA)		BREAKER		CODE	DESCRIPTION	CKT NUM		
			A	P	A	B	A	P					
1	Receptacle 1	EQ	20	2	1.68				60	2	EQ	Panel T1	2
3	Receptacle 1	EQ	20	2	1.68						EQ	Panel T1	4
5	Receptacle 2	EQ	20	2	1.68						SPACE		6
7	Receptacle 2	EQ				1.68					SPACE		8
9	Receptacle 3	EQ	20	2	1.68						SPACE		10
11	Receptacle 3	EQ				1.68					SPACE		12
13	Receptacle 4	EQ	20	2	1.68						SPACE		14
15	Receptacle 4	EQ				1.68					SPACE		16
17	SPACE				0.00						SPACE		18
19	SPACE				0.00						SPACE		20

	CONNECTED LOAD (KVA)	DEMAND FACTOR	DEMAND LOAD (KVA)	MIN NEC LOAD (KVA)	MIN NEC LOAD (AMPS)
LIGHTING (LTG)	0.0	1.25	0.0	0.0	* PER NEC 215.3
RECEPTACLES (REC)	0.0	*	0.0	0.0	* PER NEC 220.44
AC (NON COINCID)(AC NC)	0.0	1.0	0.0	0.0	* PER NEC 220.60
HEAT (NON COINCID)(H NC)	0.0	1.0	0.0	0.0	* PER NEC 220.60
HVAC (COINCID) HVAC C)	0.0	1.0	0.0	0.0	
MISC. EQUIPMENT (EQ)	23.5	1.0	23.5	23.5	
MOTORS (MTR)	0.0	1.0	0.0	0.0	
LARGEST MTR	0.0	1.25	0.0	0.0	* PER NEC 430.24
MISCELLANEOUS (MISC)	0.0	1.0	0.0	0.0	
TOTAL	23.5		23.5	23.5	98.0 AMPS

PANEL: T1			AMPS: 100 MAIN: MCB Limited to 60A				MOUNT: SURFACE ENCLOSURE: NEMA 1 AIC: 10,000 Served From: Panel F' Ckt 29,31						
CKT NUM	DESCRIPTION	CODE	BREAKER		CONNECTED LOAD (KVA)		BREAKER		CODE	DESCRIPTION	CKT NUM		
			A	P	A	B	A	P					
1	Receptacle 5	EQ	20	2	1.68				20	2	EQ	Receptacle 7	2
3	Receptacle 5	EQ				1.68					EQ	Receptacle 7	4
5	Receptacle 6	EQ	20	2	1.68						SPACE		6
7	Receptacle 6	EQ				1.68					SPACE		8
9	SPACE				0.00						SPACE		10
11	SPACE				0.00						SPACE		12

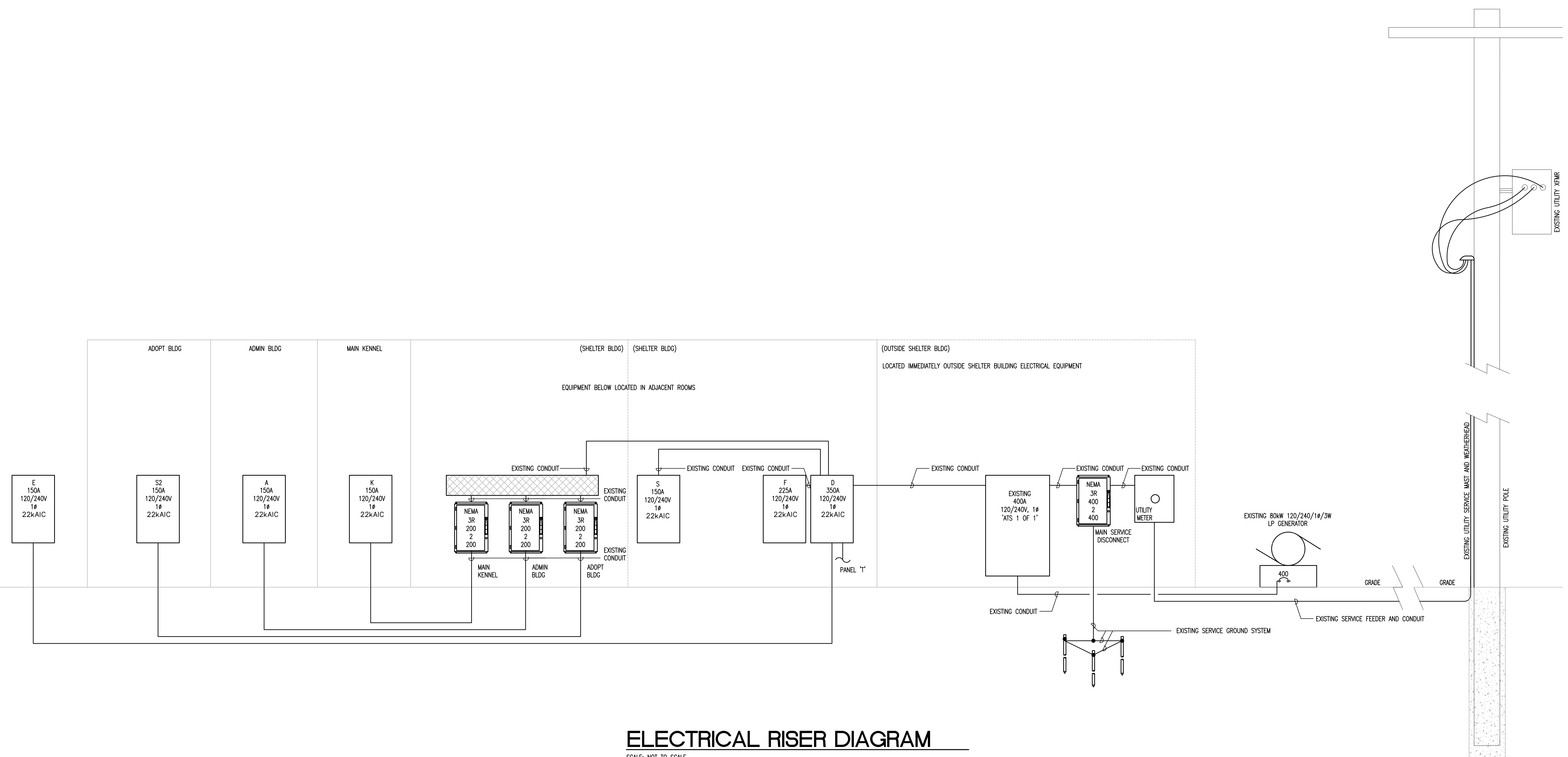
	CONNECTED LOAD (KVA)	DEMAND FACTOR	DEMAND LOAD (KVA)	MIN NEC LOAD (KVA)	MIN NEC LOAD (AMPS)
LIGHTING (LTG)	0.0	1.25	0.0	0.0	* PER NEC 215.3
RECEPTACLES (REC)	0.0	*	0.0	0.0	* PER NEC 220.44
AC (NON COINCID)(AC NC)	0.0	1.0	0.0	0.0	* PER NEC 220.60
HEAT (NON COINCID)(H NC)	0.0	1.0	0.0	0.0	* PER NEC 220.60
HVAC (COINCID) HVAC C)	0.0	1.0	0.0	0.0	
MISC. EQUIPMENT (EQ)	10.1	1.0	10.1	10.1	
MOTORS (MTR)	0.0	1.0	0.0	0.0	
LARGEST MTR	0.0	1.25	0.0	0.0	* PER NEC 430.24
MISCELLANEOUS (MISC)	0.0	1.0	0.0	0.0	
TOTAL	10.1		10.1	10.1	42.0 AMPS



ELECTRICAL PROPOSED SITE PLAN

SCALE: 1" = 20'

REVISION	COMMENTS
△	
△	
△	
△	
△	
△	



ELECTRICAL RISER DIAGRAM

SCALE: NOT TO SCALE

DRAWING TITLE :
EXISTING RISER

FILE NAME: 191100_E-2.DWG
 DATE: 11/21/2019
 PLOT SIZE: 36X24
 CADDED BY: SS
 DESIGNED BY: JO
 CHECKED BY: LV

PROJECT NO.
 191100
 SHEET NO.

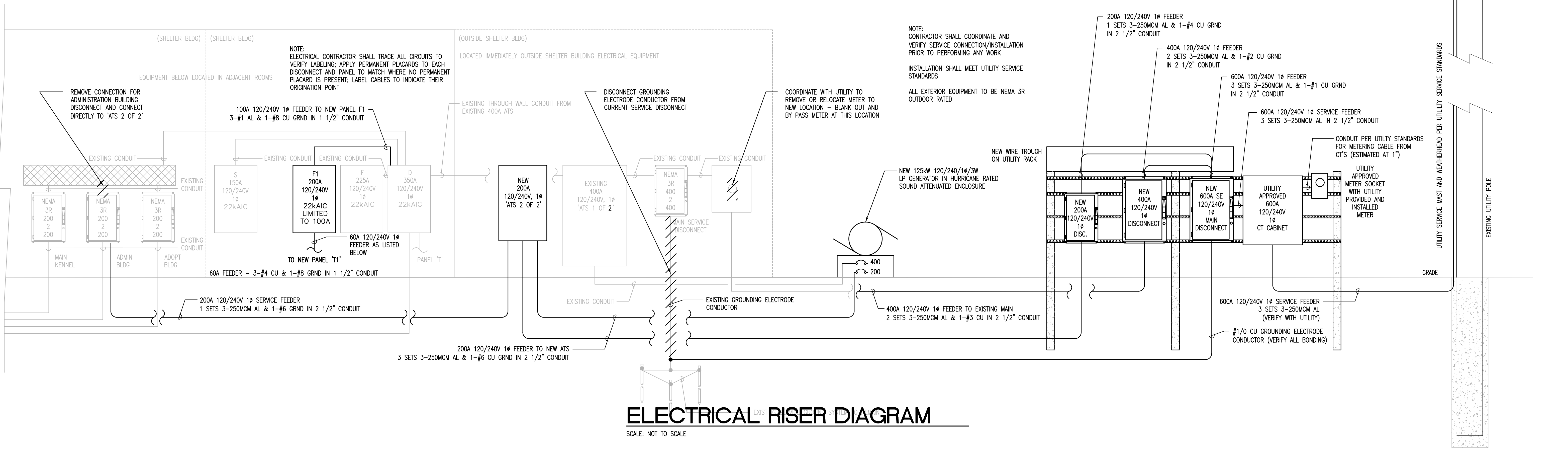
E-2.1

DRAWING REVISIONS

REVISION	COMMENTS
△	
△	
△	
△	
△	
△	

Fuel Consumption for Animal Services	
1000	Gallons per tanks
36.4	Conversion of 1 gallon to cubic feet
36400	Cubic feet of gas per tank
100% Loading	
640	Cubic Feet consumption per hour for generator at 100%
56.9	Hours run time per tank assuming full
2	Number of tanks
113.8	Total hours of run time
75% Loading	
505	Cubic Feet consumption per hour for generator at 75%
72.1	Hours run time per tank assuming full
2	Number of tanks
144.2	Total hours of run time
50% Loading	
366	Cubic Feet consumption per hour for generator at 75%
99.5	Hours run time per tank assuming full
2	Number of tanks
198.9	Total hours of run time
Current Peak Load (as obtained from serving utility)	
75	kW
125	kW generator Capacity
60.0%	Percent Load
411.6	Extrapolated consumption for actual load
88.4	Hours run time per tank assuming full
2	Number of tanks
176.9	Total hours of run time

EXISTING SERVICE LOAD AND ADDITIONS					
NAME		Manatee Animal Services			
ADDRESS		305 25th St W, Palmetto, FL 34221			
METER NUMBER		KEL6738 (bldg) + ACD6301 (trailer)			
VOLTAGE		120/240V	PHASE		
SERVICE SIZE		400A (bldg) + 200A (trailer)			
UTILITY PROVIDER			MAXIMUM DEMAND		
DATE	COMPANY	CONTACT	DATE	kW	
8/9/2019	FPL	Comm. Svcs.	Jun-19	75	
8/9/2019	FPL	Comm. Svcs.	Summer 2019	7.9	
TOTAL ACTUAL LOAD				kW	82.9
				Amps	345
Added per NEC 220.87 (2)				25%	20.725
Emergency AC Receptacles (@ 23 amps each)				85%	4.7
LOAD NOT SERVED - Trailer (has own svc)					-7.9
Add 7-20A Twist Lock Receptacles (3.36kW each)					23.5
TOTAL RECOMMENDED SIZE				kW	123.9
				Amps	516
				Existing Svc	400
				New Svc	600



ELECTRICAL RISER AND CALCULATIONS
 SCALE: NOT TO SCALE

**ANIMAL SERVICES
 MANATEE COUNTY
 GENERATOR PROJECT**
 305 25TH ST W
 PALMETTO, FL 34221

**DRAWING TITLE :
 PROPOSED RISER AND
 CALCULATIONS**
 Drawing Progress: BID DOCUMENTS (final)

FILE NAME: 191100_E-2.WG
 DATE: 11/21/2019
 PLOT SIZE: 36X24
 CADD BY: SS
 DESIGNED BY: JO
 CHECKED BY: LV

PROJECT NO.
 191100
 SHEET NO.

E-2.2
 5 OF 6