

STATE OF FLORIDA  
DEPARTMENT OF TRANSPORTATION

CONTRACT PLANS

FINANCIAL PROJECT ID 436551-2-52-01

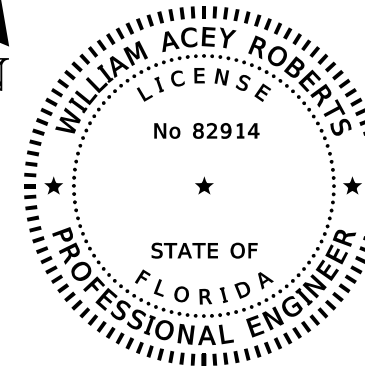
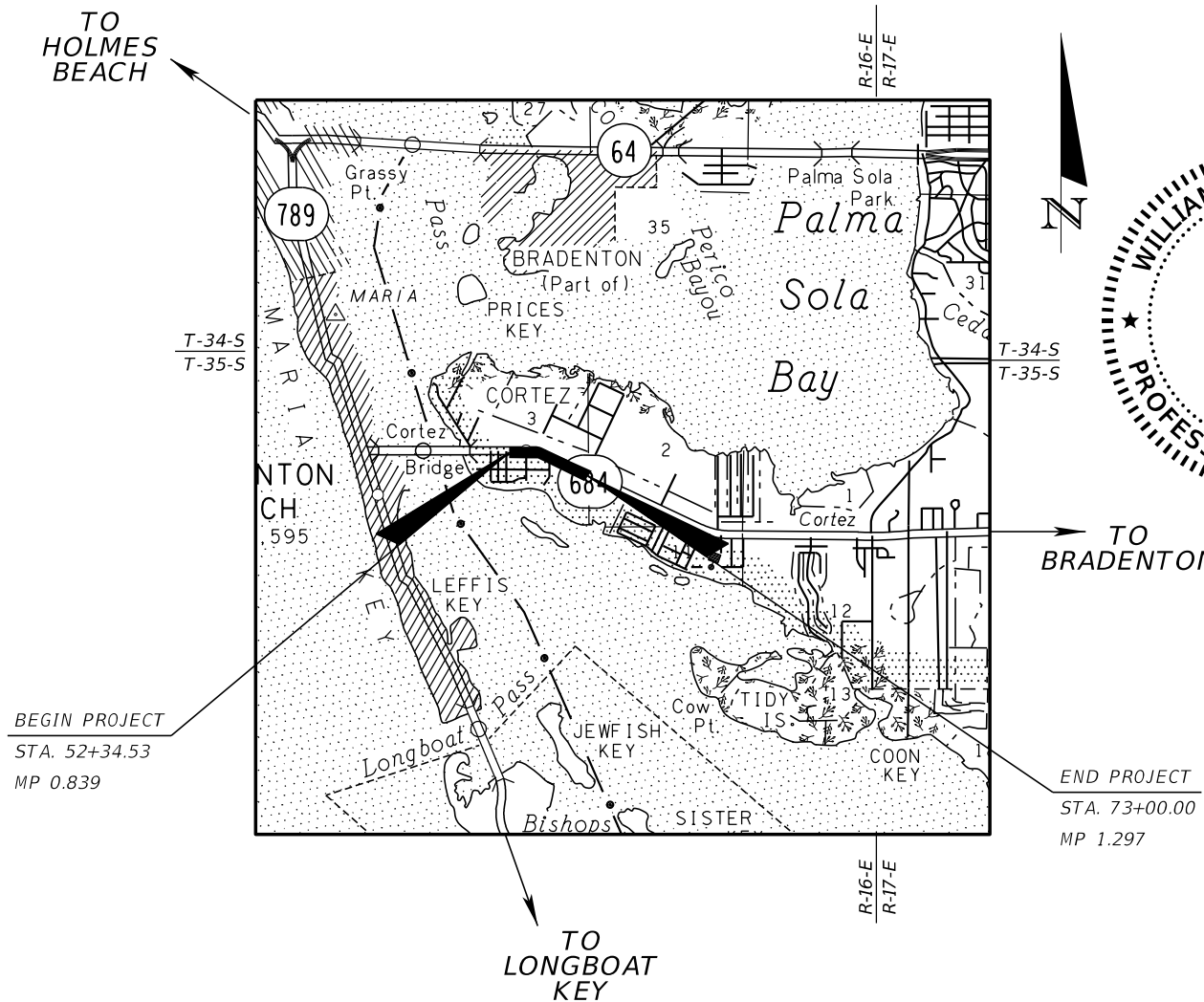
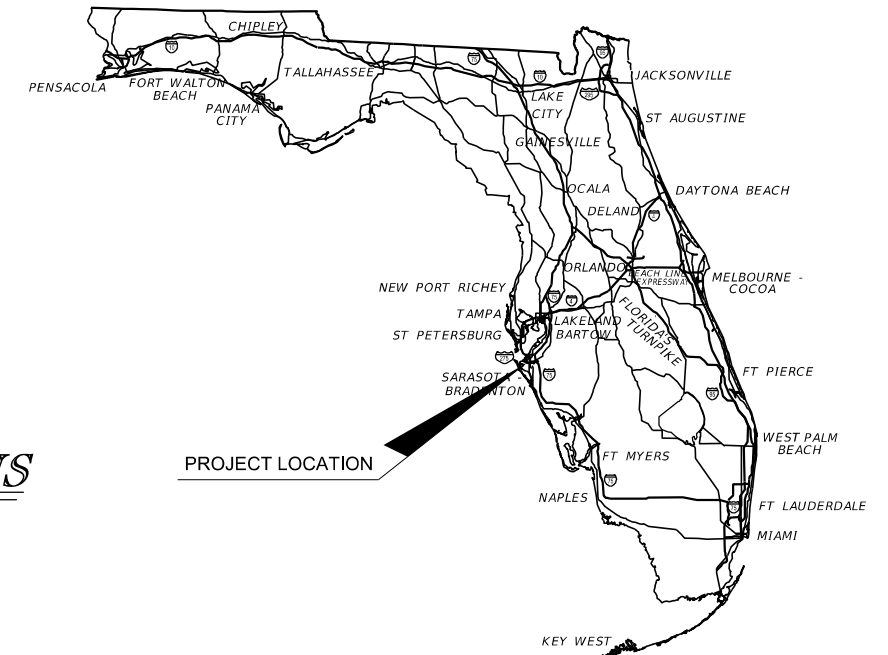
MANATEE COUNTY (13040000)

STATE ROAD NO. 684

SIGNING AND PAVEMENT MARKING PLANS

INDEX OF SIGNING AND  
PAVEMENT MARKING PLANS

SHEET NO.	SHEET DESCRIPTION
S-1	KEY SHEET
S-2	TABULATION OF QUANTITIES
S-3	GENERAL NOTES
S-4 - S-8	PLAN SHEETS
S-9	GUIDE SIGN WORKSHEET



THIS ITEM HAS BEEN DIGITALLY  
SIGNED AND SEALED BY

ON THE DATE ADJACENT TO THE SEAL

PRINTED COPIES OF THIS DOCUMENT ARE  
NOT CONSIDERED SIGNED AND SEALED  
AND THE SIGNATURE MUST BE VERIFIED  
ON ANY ELECTRONIC COPIES.

**SIGNING AND  
PAVEMENT MARKING PLANS  
ENGINEER OF RECORD:**

WILLIAM ACEY ROBERTS, P.E. #82914  
ATKINS NORTH AMERICA, INC  
4030 WEST BOY SCOUT BLVD. STE. 700  
TAMPA, FLORIDA 33607  
CONTRACT NO.: C9L49  
VENDOR NO.: F-590-896-138-001  
CERTIFICATE OF AUTHORIZATION NO.: 24

**FDOT PROJECT MANAGER:**  
RICHARD (MOSE) HOWARD, P.E.

CONSTRUCTION CONTRACT NO.	FISCAL YEAR	SHEET NO.
T1720	19	S-1

THE OFFICIAL RECORD OF THIS SHEET IS THE ELECTRONIC FILE DIGITALLY SIGNED AND SEALED UNDER RULE 61G15-23.004, F.A.C.

TABULATION OF QUANTITIES

PAY ITEM NO.	DESCRIPTION	UNIT	SHEET NUMBERS														TOTAL THIS SHEET		GRAND TOTAL	
			S-4		S-5		S-6		S-7		S-8									
			PLAN	FINAL	PLAN	FINAL	PLAN	FINAL	PLAN	FINAL	PLAN	FINAL	PLAN	FINAL	PLAN	FINAL	PLAN	FINAL	PLAN	FINAL
700-1-11	SINGLE POST SIGN, F&I GROUND MOUNT, UP TO 12 SF	AS			4		8										12		12	
700-1-12	SINGLE POST SIGN, F&I GROUND MOUNT, 12-20 SF	AS					1		1								2		2	
700-1-13	SINGLE POST SIGN, F&I GROUND MOUNT, 21-30 SF	AS					1										1		1	
700-1-50	SINGLE POST SIGN, RELOCATE	AS			2		3										5		5	
700-1-60	SINGLE POST SIGN, REMOVE	AS			2		3				3						8		8	
705-10-1	OBJECT MARKER, TYPE 1	EA			2												2		2	
710-90	PAINTED PAVEMENT MARKINGS, FINAL SURFACE	LS																		
*	RETRO-REFLECTIVE PAVEMENT MARKERS	EA	57		84		113		71		10						335		335	
*	PAINTED PAVEMENT MARKINGS, STANDARD, WHITE SOLID, 6"	GM	0.108		0.252		0.320		0.341		0.123						1.143		1.143	
*	PAINTED PAVEMENT MARKINGS, STANDARD, WHITE, SOLID 12" FOR CROSSWALK	LF	241		70		457										768		768	
*	PAINTED PAVEMENT MARKINGS, STANDARD, WHITE, SOLID, 24" FOR STOP LINE AND CROSSWALK	LF	168		50		469										688		688	
*	PAINTED PAVEMENT MARKINGS, STANDARD, WHITE, 2-4 DOTTED GUIDELINE/6-10 GAP EXTENSION, 6"	GM	0.021		0.009		0.016										0.047		0.047	
*	PAINTED PAVEMENT MARKINGS, STANDARD, WHITE, MESSAGE OR SYMBOL	EA	3		5		6		2		1						17		17	
*	PAINTED PAVEMENT MARKINGS, STANDARD, WHITE, ARROW	EA	7		11		10		2		1						31		31	
	PAINTED PAVEMENT MARKINGS, STANDARD, WHITE, SOLID, 18" FOR DIAGONALS AND CHEVRONS	LF					68										68		68	
	PAINTED PAVEMENT MARKINGS, STANDARD, WHITE SOLID, 8"	GM					0.019										0.019		0.019	
*	PAINTED PAVEMENT MARKINGS, STANDARD, YELLOW, SOLID, 6"	GM	0.206		0.269		0.387		0.181		0.512						1.555		1.555	
*	PAINTED PAVEMENT MARKINGS, STANDARD, YELLOW, SOLID, 18" FOR DIAGONALS AND CHEVRONS	LF	32		65		102		41		30						270		270	
*	PAINTED PAVEMENT MARKINGS, STANDARD, YELLOW, 10'-30' SKIP, 6"	GM	0.045		0.066		0.017										0.129		0.129	
	PAINTED PAVEMENT MARKINGS, STANDARD, YELLOW, 2-4 DOTTED GUIDELINE/6-10 GAP EXTENSION, 6"	GM					0.012										0.012		0.012	
*	PAINTED PAVEMENT MARKINGS, STANDARD-OPEN GRADED ASPHALT SURFACES, WHITE, SKIP, 6", 10-30 SKIP OR 3-9 LANE DROP	GM	0.021		0.034		0.023		0.018								0.096		0.096	
711-11-123	THERMOPLASTIC, STANDARD, WHITE, SOLID 12" FOR CROSSWALK	LF	241		70		457										768		768	
711-11-141	THERMOPLASTIC, STANDARD, WHITE, 2-4 DOTTED GUIDELINE/6-10 GAP EXTENSION, 6"	GM	0.022		0.009		0.016										0.047		0.047	
711-11-160	THERMOPLASTIC, STANDARD, WHITE, MESSAGE OR SYMBOL	EA	3		5		6		2		1						17		17	
711-11-170	THERMOPLASTIC, STANDARD, WHITE, ARROW	EA	7		11		10		2		1						31		31	
711-11-124	THERMOPLASTIC, STANDARD, WHITE, SOLID, 18" FOR DIAGONALS AND CHEVRONS	LF					68										68		68	
711-11-224	THERMOPLASTIC, STANDARD, YELLOW, SOLID, 18" FOR DIAGONALS AND CHEVRONS	LF	32		65		102		41		30						270		270	
711-14-125	THERMOPLASTIC, PREFORMED, WHITE, SOLID, 24" FOR STOP LINE AND CROSSWALK	LF	168		50		469										688		688	
711-14-160	THERMOPLASTIC, PREFORMED, WHITE, MESSAGE OR SYMBOL	EA	3		5		4										12		12	
711-14-170	THERMOPLASTIC, PREFORMED, WHITE, ARROW	EA	3		5												8		8	
711-14-241	THERMOPLASTIC, PREFORMED, YELLOW, 2-4 DOTTED GUIDELINE ON CONCRETE SURFACES 6"	GM					0.012										0.012		0.012	
711-15-101	THERMOPLASTIC, STANDARD, WHITE SOLID, 6"	GM	0.108		0.252		0.320		0.314		0.123						1.117		1.117	
711-15-102	THERMOPLASTIC, STANDARD, WHITE, SOLID, 8"	GM					0.019										0.019		0.019	
711-15-201	THERMOPLASTIC, STANDARD, YELLOW, SOLID, 6"	GM	0.206		0.269		0.387		0.181		0.512						1.555		1.555	
711-15-131	THERMOPLASTIC, STANDARD-OPEN GRADED ASPHALT SURFACES, WHITE, SKIP, 6", 10-30 SKIP OR 3-9 LANE DROP	GM	0.021		0.034		0.023		0.018								0.096		0.096	
711-15-231	THERMOPLASTIC, STANDARD, YELLOW, 10'-30' SKIP, 6"	GM	0.045		0.066		0.017										0.129		0.129	

\* THIS QUANTITIES ARE PAID FOR UNDER PAINTED PAVEMENT PARKINGS (FINAL SURFACE), LUMP SUM - ITEM NO. 710-90. THE QUANTITIES SHOWN ARE FOR ONE APPLICATION; SEE SPECIFICATION 710 FOR THE NUMBER OF APPLICATIONS REQUIRED.

REVISIONS DATE DESCRIPTION DATE DESCRIPTION				WILLIAM ACEY ROBERTS P.E. NO. 82914 ATKINS NORTH AMERICA, INC. 4030 WEST BOY SCOUT BLVD. STE. 700 TAMPA, FLORIDA 33607 FBPE CERTIFICATE OF AUTHORIZATION NO. 24	STATE OF FLORIDA DEPARTMENT OF TRANSPORTATION			TABULATION OF QUANTITIES	SHEET NO. S-2
ROAD NO.		COUNTY	FINANCIAL PROJECT ID		SR 684	MANATEE	436551-2-52-01		

THE OFFICIAL RECORD OF THIS SHEET IS THE ELECTRONIC FILE DIGITALLY SIGNED AND SEALED UNDER RULE 61G15-23.004, F.A.C.

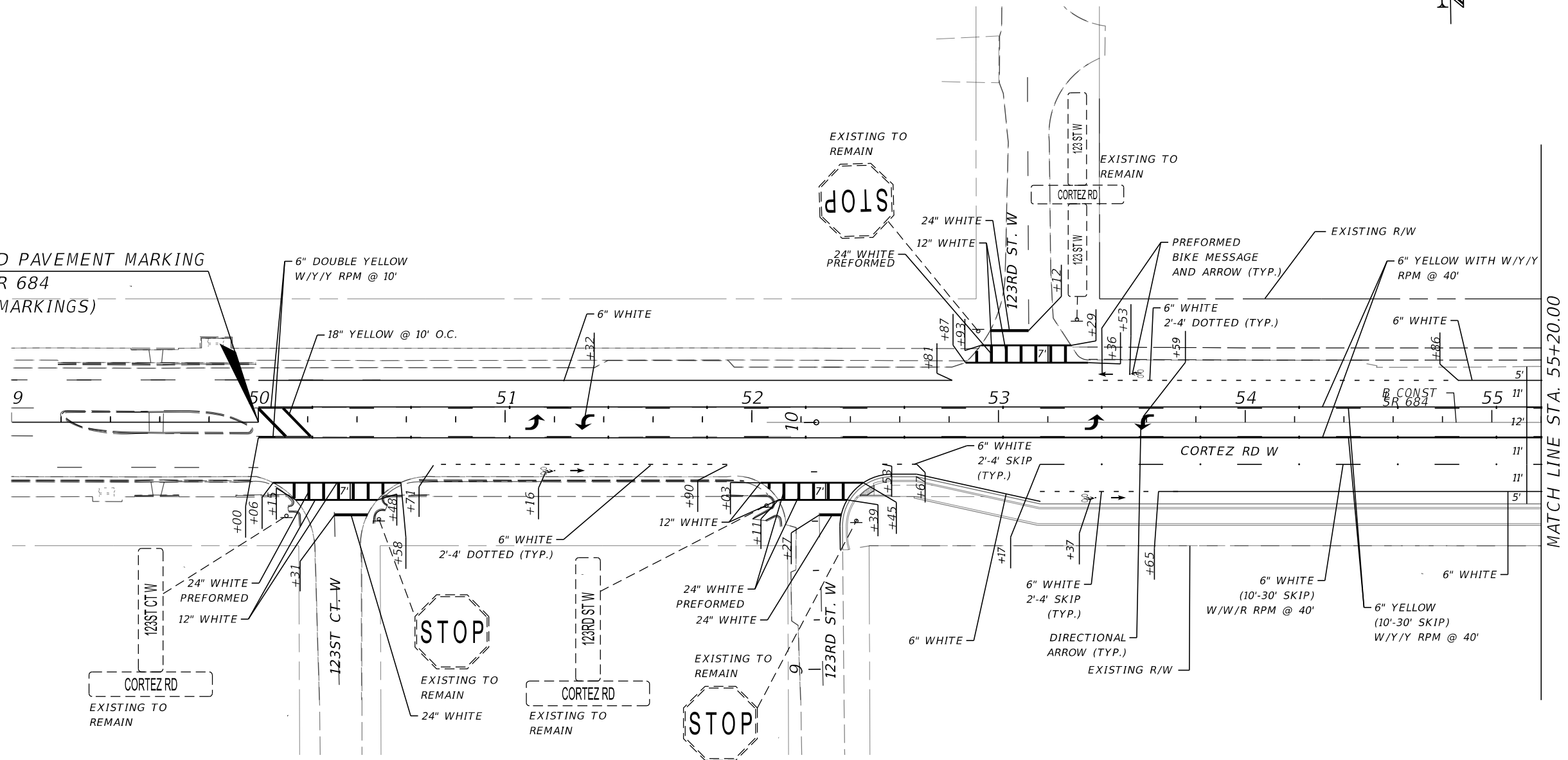
GENERAL NOTES:

1. WHERE DOUBLE YELLOW IS CALLED FOR, ALL STOP SIGN CONTROLLED SIDE STREETS SHALL HAVE 100 FEET (100') OF DOUBLE YELLOW AND ALL SIGNAL CONTROLLED SIDE STREETS SHALL HAVE 200 FEET (200') OF DOUBLE YELLOW UNLESS OTHERWISE NOTED IN THE PLANS.
2. ALL SIGNS MOUNTED OVER SIDEWALKS SHALL HAVE A VERTICAL CLEARANCE OF EIGHT FEET (8') STANDARD.
3. UNLESS OTHERWISE NOTED ON THE PLAN SHEETS, ALL CROSSWALKS ACROSS CORTEZ RD SHALL BE TEN FEET (10') IN WIDTH AND ALL CROSSWALKS ACROSS 119 ST SHALL BE SIX FEET (6') IN WIDTH. MEASUREMENTS SHALL BE FROM INSIDE OF 12" STRIPES.
4. PAINT MEDIAN NOSES AND RAISED ISLAND NOSES REFLECTIVE WHITE OR REFLECTIVE YELLOW, AS NOTED IN THE PLANS.
5. THE SIGN LOCATIONS SHOWN ARE APPROXIMATE AND MAY REQUIRE FIELD ADJUSTMENT, AS DIRECTED BY THE ENGINEER.

REVISIONS				WILLIAM ACEY ROBERTS P.E. NO. 82914 ATKINS NORTH AMERICA, INC. 4030 WEST BOY SCOUT BLVD. STE. 700 TAMPA, FLORIDA 33607 FBPE CERTIFICATE OF AUTHORIZATION NO. 24	STATE OF FLORIDA DEPARTMENT OF TRANSPORTATION			<i>GENERAL NOTES</i>	SHEET NO.
DATE	DESCRIPTION	DATE	DESCRIPTION		ROAD NO.	COUNTY	FINANCIAL PROJECT ID		S-3
					SR 684	MANATEE	436551-2-52-01		



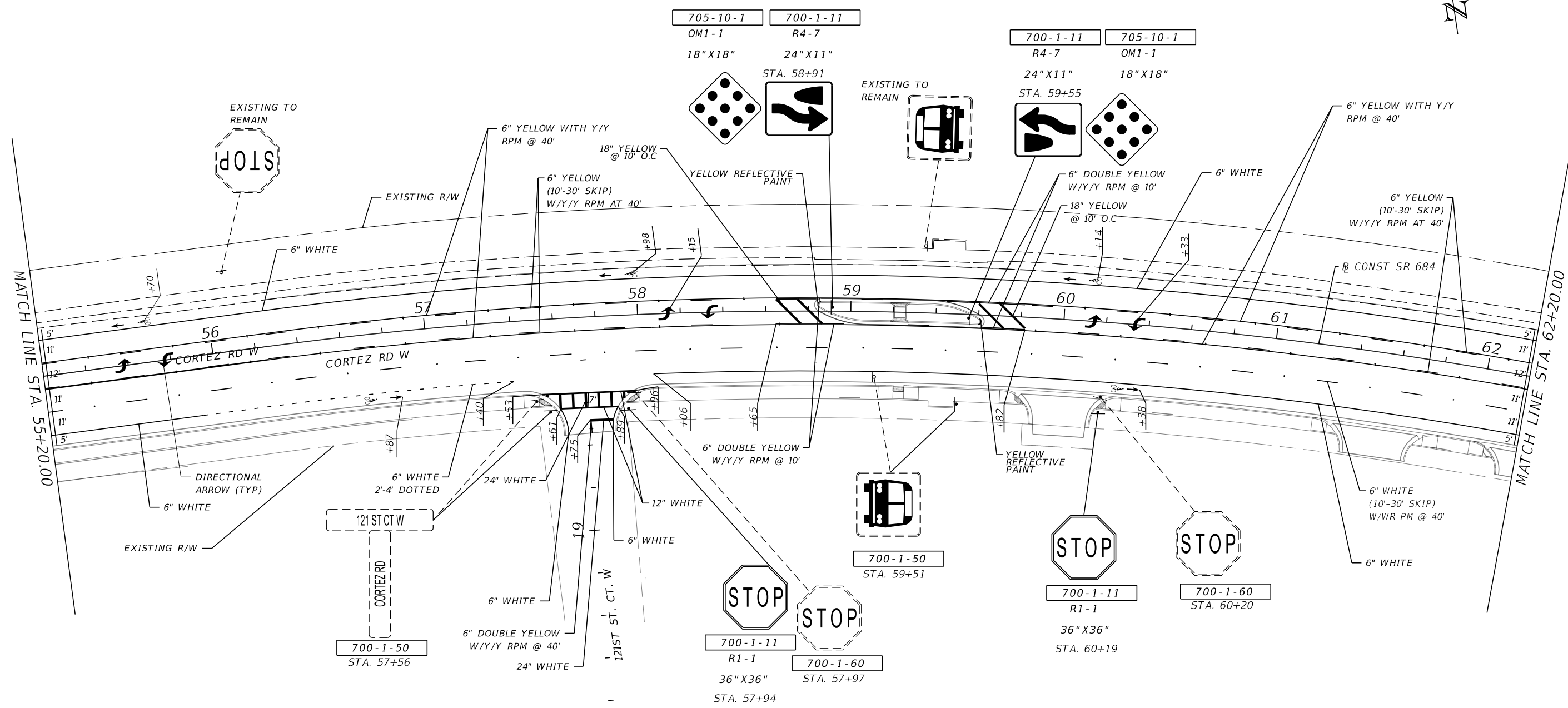
BEGIN PROJECT  
 BEGIN SIGNING AND PAVEMENT MARKING  
 STA. 52+34.53 @ SR 684  
 (MATCH EXISTING MARKINGS)



MATCH LINE STA. 55+20.00

REVISIONS				WILLIAM ACEY ROBERTS P.E. NO. 82914 ATKINS NORTH AMERICA, INC. 4030 WEST BOY SCOUT BLVD. STE. 700 TAMPA, FLORIDA 33607 FBPE CERTIFICATE OF AUTHORIZATION NO. 24	STATE OF FLORIDA DEPARTMENT OF TRANSPORTATION			<b>SIGNING AND PAVEMENT          MARKING PLAN (1)</b>	SHEET NO.  S-4
DATE	DESCRIPTION	DATE	DESCRIPTION		ROAD NO.	COUNTY	FINANCIAL PROJECT ID		
					SR 684	MANATEE	436551-2-52-01		

THE OFFICIAL RECORD OF THIS SHEET IS THE ELECTRONIC FILE DIGITALLY SIGNED AND SEALED UNDER RULE 61G15-23.004, F.A.C.



REVISIONS			
DATE	DESCRIPTION	DATE	DESCRIPTION

WILLIAM ACEY ROBERTS  
 P.E. NO. 82914  
 ATKINS NORTH AMERICA, INC.  
 4030 WEST BOY SCOUT BLVD. STE. 700  
 TAMPA, FLORIDA 33607  
 FBPE CERTIFICATE OF AUTHORIZATION NO. 24

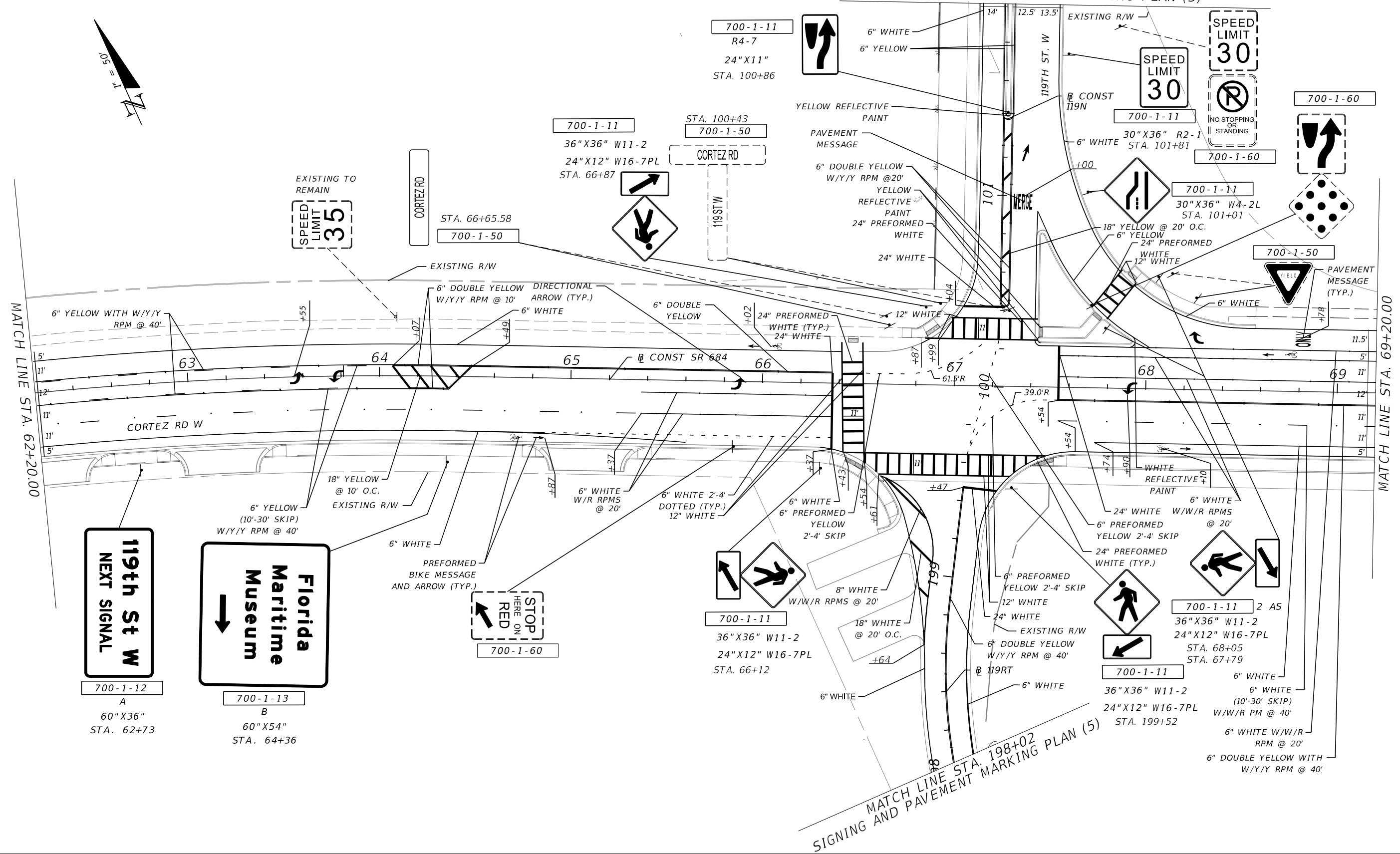
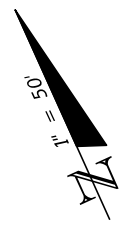
STATE OF FLORIDA DEPARTMENT OF TRANSPORTATION		
ROAD NO.	COUNTY	FINANCIAL PROJECT ID
SR 684	MANATEE	436551-2-52-01

**SIGNING AND PAVEMENT  
 MARKING PLAN (2)**

SHEET NO.  
 S-5

THE OFFICIAL RECORD OF THIS SHEET IS THE ELECTRONIC FILE DIGITALLY SIGNED AND SEALED UNDER RULE 61G15-23.004, F.A.C.

MATCH LINE STA. 102+00.00  
SIGNING AND PAVEMENT MARKING PLAN (5)



**119th St W**  
NEXT SIGNAL

700-1-12  
A  
60" X 36"  
STA. 62+73

**Florida Maritime Museum**

700-1-13  
B  
60" X 54"  
STA. 64+36

STOP  
HERE ON  
RED

700-1-60

700-1-11  
36" X 36" W11-2  
24" X 12" W16-7PL  
STA. 66+12

700-1-11  
36" X 36" W11-2  
24" X 12" W16-7PL  
STA. 199+52

700-1-11 2 AS  
36" X 36" W11-2  
24" X 12" W16-7PL  
STA. 68+05  
STA. 67+79

SPEED LIMIT  
30

NO STOPPING  
OR  
STANDING

700-1-60

700-1-50

MATCH LINE STA. 62+20.00

MATCH LINE STA. 69+20.00

MATCH LINE STA. 198+02  
SIGNING AND PAVEMENT MARKING PLAN (5)

REVISIONS			
DATE	DESCRIPTION	DATE	DESCRIPTION

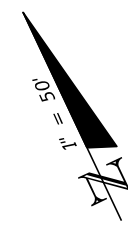
WILLIAM ACEY ROBERTS  
P.E. NO. 82914  
ATKINS NORTH AMERICA, INC.  
4030 WEST BOY SCOUT BLVD. STE. 700  
TAMPA, FLORIDA 33607  
FBPE CERTIFICATE OF AUTHORIZATION NO. 24

STATE OF FLORIDA DEPARTMENT OF TRANSPORTATION		
ROAD NO.	COUNTY	FINANCIAL PROJECT ID
SR 684	MANATEE	436551-2-52-01

**SIGNING AND PAVEMENT  
MARKING PLAN (5)**

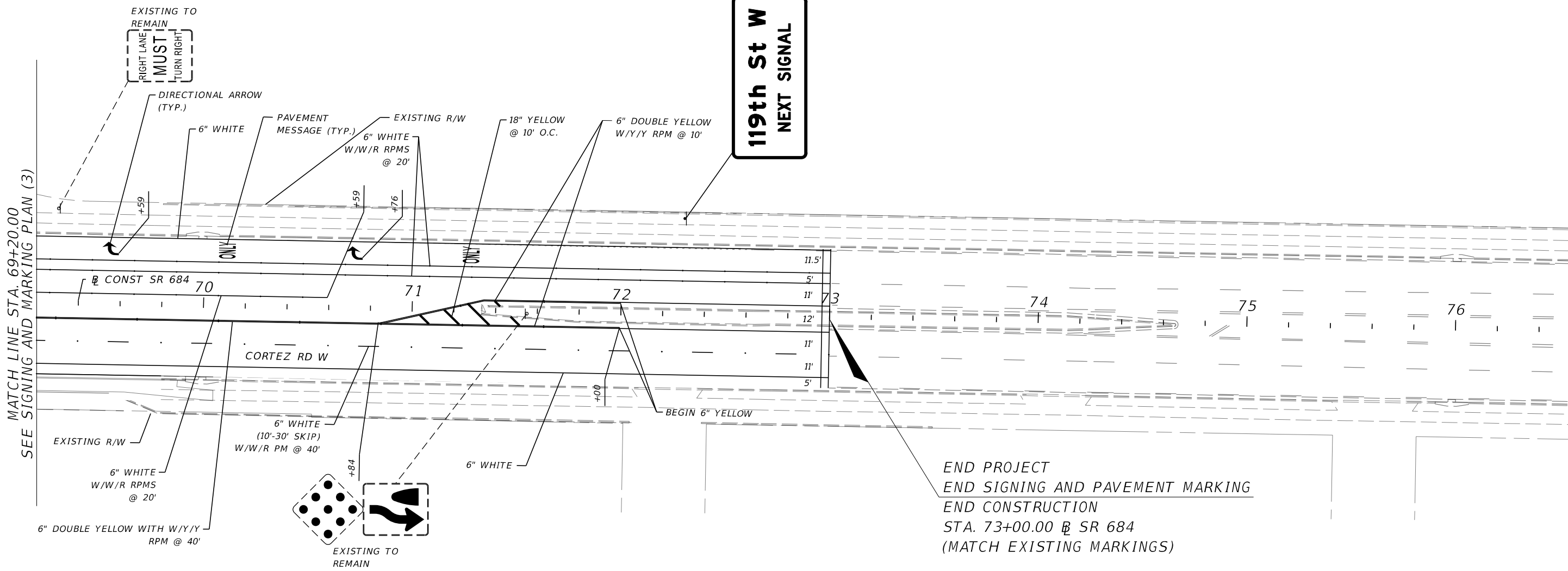
SHEET  
NO.  
S-6

THE OFFICIAL RECORD OF THIS SHEET IS THE ELECTRONIC FILE DIGITALLY SIGNED AND SEALED UNDER RULE 61G15-23.004, F.A.C.



700-1-12  
A  
60' X 36"  
STA. 72+30

**119th St W**  
**NEXT SIGNAL**

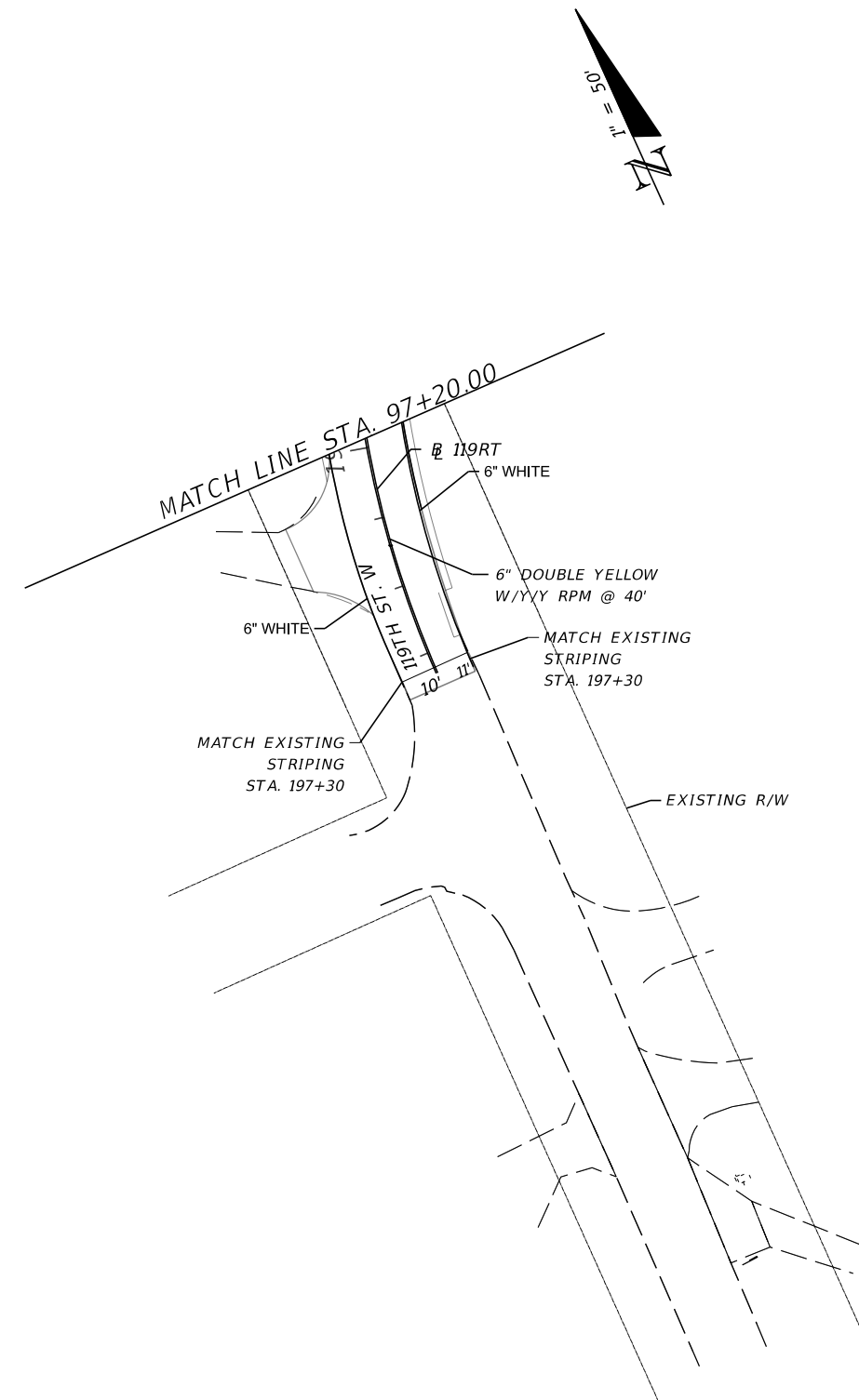
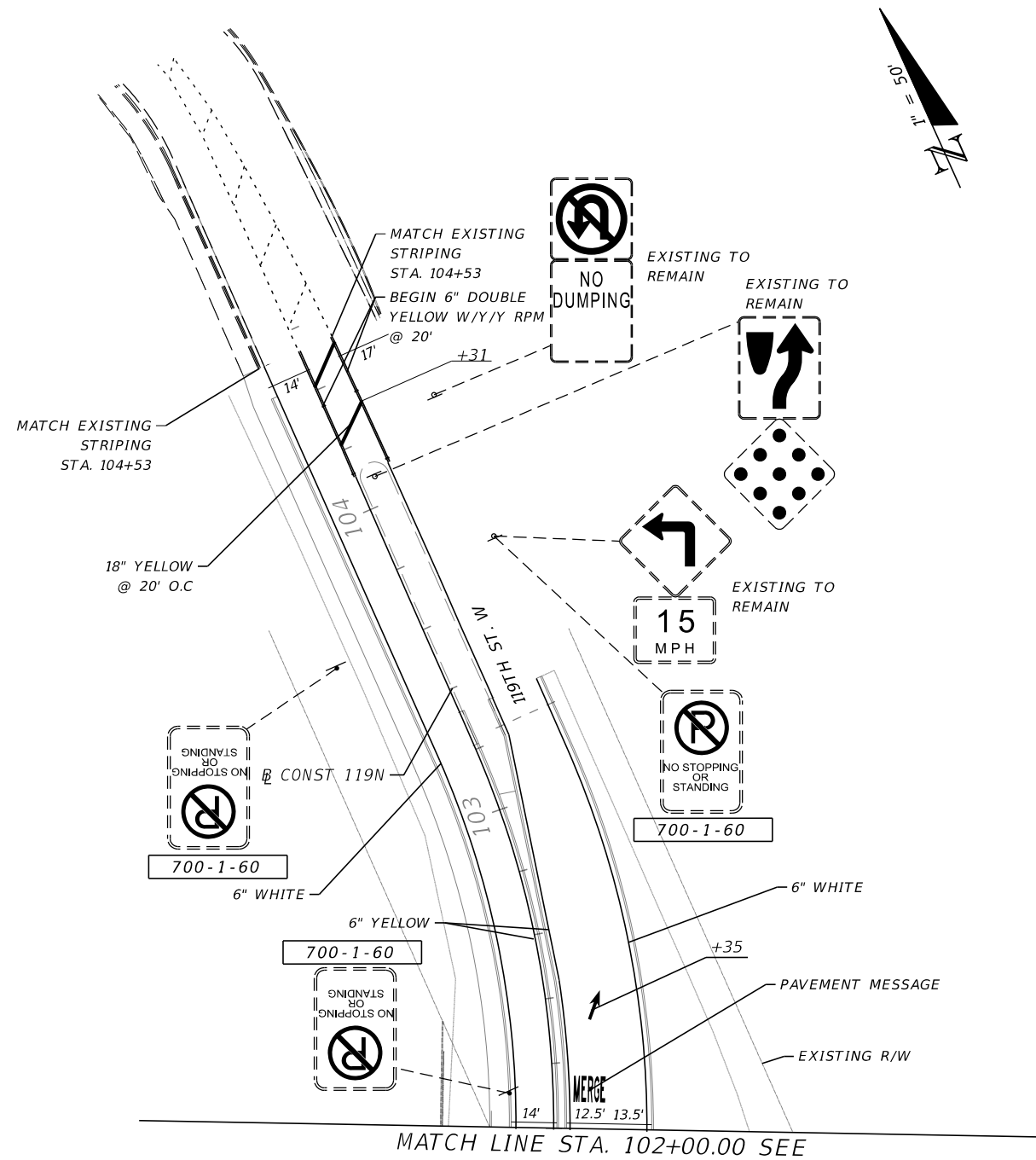


MATCH LINE STA. 69+20.00  
SEE SIGNING AND MARKING PLAN (3)

END PROJECT  
END SIGNING AND PAVEMENT MARKING  
END CONSTRUCTION  
STA. 73+00.00 @ SR 684  
(MATCH EXISTING MARKINGS)

REVISIONS				WILLIAM ACEY ROBERTS P.E. NO. 82914 ATKINS NORTH AMERICA, INC. 4030 WEST BOY SCOUT BLVD. STE. 700 TAMPA, FLORIDA 33607 FBPE CERTIFICATE OF AUTHORIZATION NO. 24	STATE OF FLORIDA DEPARTMENT OF TRANSPORTATION			<b>SIGNING AND PAVEMENT MARKING PLAN (4)</b>	SHEET NO.  S-7
DATE	DESCRIPTION	DATE	DESCRIPTION		ROAD NO.	COUNTY	FINANCIAL PROJECT ID		
						SR 684	MANATEE		436551-2-52-01

THE OFFICIAL RECORD OF THIS SHEET IS THE ELECTRONIC FILE DIGITALLY SIGNED AND SEALED UNDER RULE 61G15-23.004, F.A.C.



REVISIONS			
DATE	DESCRIPTION	DATE	DESCRIPTION

WILLIAM ACEY ROBERTS  
P.E. NO. 82914  
ATKINS NORTH AMERICA, INC.  
4030 WEST BOY SCOUT BLVD. STE. 700  
TAMPA, FLORIDA 33607  
FBPE CERTIFICATE OF AUTHORIZATION NO. 24

STATE OF FLORIDA DEPARTMENT OF TRANSPORTATION		
ROAD NO.	COUNTY	FINANCIAL PROJECT ID
SR 684	MANATEE	436551-2-52-01

**SIGNING AND PAVEMENT  
MARKING PLAN (5)**

SHEET NO.  
**S-8**

THE OFFICIAL RECORD OF THIS SHEET IS THE ELECTRONIC FILE DIGITALLY SIGNED AND SEALED UNDER RULE 61G15-23.004, F.A.C.



