

COMPONENTS OF CONTRACT PLANS SET

UTILITY ADJUSTMENT PLANS

MANATEE COUNTY PUBLIC UTILITIES DEPARTMENT

UTILITY RELOCATION PLANS

FINANCIAL PROJECT ID 436551-2-52-01

SR 684 (FROM EAST OF 123RD ST. TO 86TH ST. WEST)

MANATEE COUNTY

STATE ROAD NO. 684

INDEX OF UTILITY ADJUSTMENT PLANS

SHEET NO.	SHEET DESCRIPTION
01	Key Sheet
02 - 03	General Notes
<div><div></div>04 - 09</div>	Utility Adjustment Plan-Profile
10 - 15	Cross Sections
16 - 22	Typical Details

MANATEE COUNTY PUBLIC
UTILITIES DEPARTMENT
RGB MARK-UPS

RGB MARK-UPS PROVIDED BY:

AYRES ASSOCIATES
8875 HIDDEN RIVER PARKWAY, #200
TAMPA, FL 33637
813-978-8688
CERTIFICATE OF AUTHORIZATION: #4356

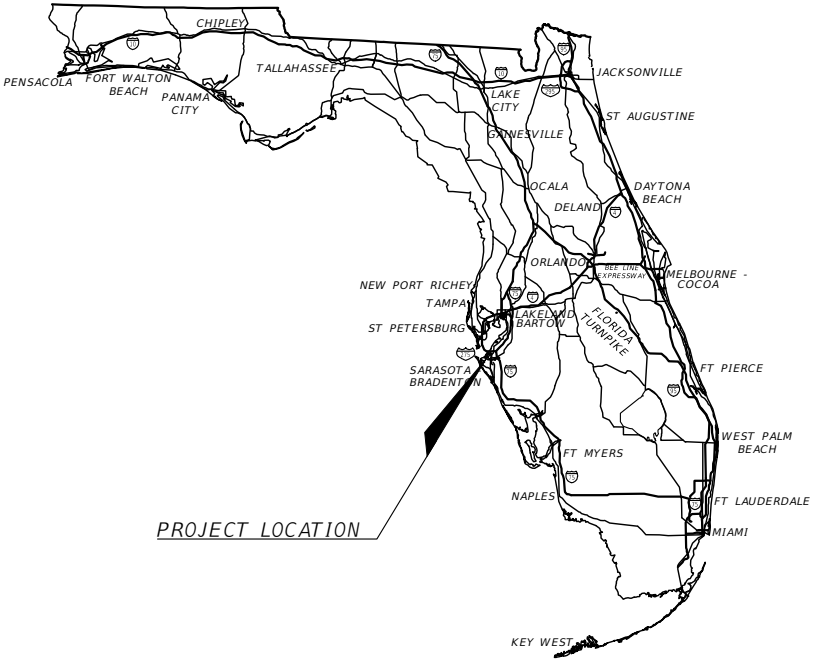
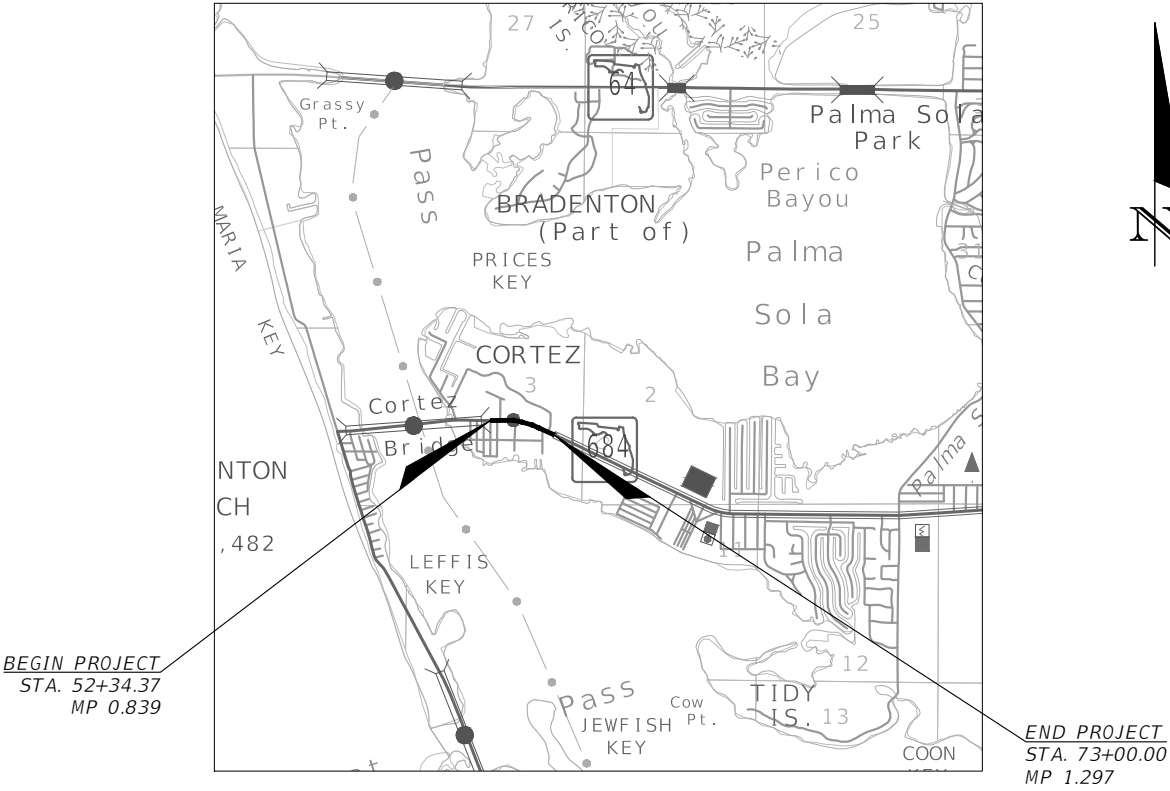
GOVERNING DESIGN STANDARDS:
Florida Department of Transportation, FY2018-19 Design Standards
eBook (DSeB) and applicable Design Standards Revisions (DSRs) at the
following website:
<http://www.fdot.gov/roadway/DesignStandards/Standards.shtm>

APPLICABLE DSRs:

GOVERNING STANDARD SPECIFICATIONS:
Florida Department of Transportation, JULY, 2018 Standard Specifications
for Road and Bridge Construction at the following website:
<http://www.fdot.gov/programmanagement/Implemented/SpecBooks>

REVISIONS:

SHEET 05 (REVISED 08/09/19)



UTILITY ADJUSTMENT PLANS
ENGINEER OF RECORD:

CHRISTOPHER K. MARTIN
P.E. NO.:66598
AYRES ASSOCIATES
8875 HIDDEN RIVER PARKWAY, #200
TAMPA, FL 33637
CONTRACT NO.: N/A
VENDOR NO.: N/A
CERTIFICATE OF AUTHORIZATION NO.: 4356

CONSTRUCTION CONTRACT NO.	FISCAL YEAR	SHEET NO.
N/A	19	01

IFBC 19-TA003053CD GENERAL NOTES:				ADDENDUM NO. 2 SEPARATION REQUIREMENTS:			REVISED BID ATATCHMENT 5	
<div><div>1. THE EXISTING TOPOGRAPHY AND PROPOSED ROADWAY IMPROVEMENT PLANS SHOWN ON THIS SET OF PLANS WERE DERIVED FROM FDOT ROADWAY IMPROVEMENT PLANS FPID #436551-2-52-01 PHASE IIR SUBMITTAL DATED AUGUST 2018 AND BEST AVAILABLE INFORMATION. LOCATIONS, ELEVATIONS, AND DIMENSIONS OF EXISTING UTILITIES, STRUCTURES, AND OTHER FEATURES ARE BASED UPON AVAILABLE INFORMATION REVIEWED AT THE TIME OF DOCUMENT PREPARATION AND ARE APPROXIMATE ONLY. EXACT LOCATIONS, DEPTHS OF UTILITIES, AND TYPE OF PIPE MUST BE VERIFIED BY THE CONTRACTOR BEFORE ORDERING MATERIALS, 72 HOURS PRIOR TO EXCAVATION. IT SHALL BE THE CONTRACTOR'S RESPONSIBILITY TO LOCATE UTILITY SERVICE LINES AS REQUIRED FOR CONSTRUCTION AND TO PROTECT THE SAME DURING CONSTRUCTION. THE ENGINEER SHALL BE IMMEDIATELY NOTIFIED OF ANY CONFLICT WITH THE PROPOSED CONSTRUCTION.</div><div>2. THE CONTRACTOR SHALL BE RESPONSIBLE FOR SUPPLYING RECORD DRAWING INFORMATION INCLUDING, BUT NOT LIMITED TO FINISHED GRADE ELEVATIONS, TIES TO FORCE MAINS, VALVES, BENDS, ELEVATIONS OF PIPES WHERE DEPTH OF COVER VARIES FROM DESIGN, TIES TO SANITARY SEWER LINE, MANHOLE RIM AND INVERT ELEVATIONS, CLEANOUTS AND SERVICE CONNECTIONS. LOCATIONS, DIMENSIONS, AND ELEVATIONS OF ALL OTHER CONSTRUCTION COMPONENTS WHICH VARY FROM THE DESIGN.</div><div>3. THE CONTRACTOR SHALL COORDINATE CONSTRUCTION ACTIVITIES WITH ALL AFFECTED FEDERAL, STATE, LOCAL, AND PRIVATE ENTITIES POTENTIALLY AFFECTED. THE CONTRACTOR SHALL PROVIDE A MINIMUM OF 48 HOURS NOTICE OF WHEN CONSTRUCTION WILL COMMENCE IN THE AREA IN ORDER TO PERMIT FIELD LOCATION OF UTILITY LINES PRIOR TO CONSTRUCTION. A TOLL FREE NUMBER, 811 IS AVAILABLE TO ASSIST IN SUCH COORDINATION EFFORTS. THIS NUMBER IS PART OF THE UTILITY NOTIFICATION EFFORTS. THIS IS REFERRED TO AS "SUNSHINE811", BUT DOES NOT TOTALLY REPRESENT ALL UTILITIES POTENTIALLY AFFECTED. ALL UTILITIES SHALL BE KEPT IN OPERATION EXCEPT WITH THE EXPRESS WRITTEN CONSENT OF THE UTILITY OWNER. IT WILL BE THE CONTRACTOR'S RESPONSIBILITY TO PRESERVE EXISTING UTILITIES. ANY AND ALL DAMAGE TO PROPERLY LOCATED EXISTING UTILITIES AS A RESULT OF THE CONTRACTOR'S ACTIVITIES, SHALL BE REPAIRED AT THE CONTRACTOR'S EXPENSE.</div><div>4. THE CONTRACTOR SHALL BE RESPONSIBLE TO MAKE A REVIEW OF THE SITE TO DETERMINE EXISTING CONDITIONS AND ANYTHING NOT COVERED IN THE CONTRACT DOCUMENTS SHALL BE BROUGHT TO THE ATTENTION OF THE OWNER'S REPRESENTATIVE (ENGINEER OF RECORD) AND BE PART OF THE BID VALUE.</div><div>5. THE CONTRACTOR SHALL NOTIFY THE COUNTY A MINIMUM OF 2 WEEKS IN ADVANCE OF ANY AND ALL WORK REQUIRING DISRUPTION OF ACCESS, WATER, OR SANITARY SEWER SERVICE. DISRUPTION IN SERVICE TO ANY PROPERTY OWNER SHALL NOT EXCEED 2 HOURS FOR WATER AND 4 HOURS FOR SANITARY SEWER SERVICE. ACCESS TO PROPERTY SHALL BE MAINTAINED AT ALL TIMES.</div><div>6. CONTRACTOR IS RESPONSIBLE FOR MAINTAINING AND PROTECTING THE INTEGRITY OF THE UTILITY POLES AND SIGNAL POLES DURING CONSTRUCTION INCLUDING BUT NOT LIMITED TO PAVING, STABILIZED EARTH, CURBS, DRIVEWAYS, SIDEWALKS, FENCES, MAILBOXES, IRRIGATION LINES, SIGNS, LANDSCAPING, SOD, WETLANDS, ETC.</div><div>7. ANY AND ALL AREAS DISTURBED DURING CONSTRUCTION ACTIVITIES SHALL BE COMPLETELY RESTORED WITH THE SAME TYPE AND QUALITY OF MATERIALS AND WORKMANSHIP AS PREVIOUSLY EXISTED.</div></div> <div><div>8. PRIOR TO COMMENCEMENT OF CONSTRUCTION ACTIVITY, APPROPRIATE EROSION CONTROL DEVICES SHALL BE INSTALLED TO CONTROL AND REDUCE SOIL EROSION AND SEDIMENT TRANSPORT TO OFF-SITE AREAS. THE CONTRACTOR SHALL MAINTAIN THESE DEVICES THROUGHOUT THE DURATION OF CONSTRUCTION. ALL DEVICES SHALL REMAIN IN-PLACE UNTIL THE SURROUNDING AREAS ARE ESTABLISHED. THESE DEVICES SHALL BE INSTALLED ACCORDING TO THE FLORIDA DEVELOPMENT MANUAL PUBLISHED BY THE FLORIDA DEPARTMENT OF ENVIRONMENTAL PROTECTION AND GOVERNING CONTRACT DOCUMENTS.</div><div>9. ALL WATER COLLECTED AND PUMPED DURING TRENCH DEWATERING ACTIVITIES SHALL BE DISPOSED OF IN ACCORDANCE WITH NPDES REQUIREMENTS.</div><div>10. ALL FACILITIES AND ACCESSORIES SHALL BE INSTALLED IN CONFORMANCE WITH APPLICABLE LOCAL CODES AND REQUIREMENTS AND THESE CONTRACT DOCUMENTS.</div><div>11. THE CONTRACTOR SHALL PROVIDE ALL DEWATERING EQUIPMENT NECESSARY TO KEEP EXCAVATIONS DRY AND SHALL PROVIDE ALL SHORING, SHEETING, AND BRACING NECESSARY TO PROTECT WORKMEN, ADJACENT STRUCTURES, UTILITIES, EXISTING PAVEMENT, OR TO MINIMIZE TRENCH. THE CONTRACTOR SHALL PROVIDE ADEQUATE TRENCH SAFETY FOR TRENCH EXCAVATIONS, AND COMPLY WITH OSHA AND THE STATE OF FLORIDA TRENCH SAFETY REGULATIONS. THE COST OF DEWATERING SHALL BE INCLUDED IN THE PIPING PAY ITEMS.</div><div>12. ALL TEES, CROSSES, PLUGS, BENDS (HORIZONTAL AND VERTICAL), DEFLECTING 11-1/4 DEG OR MORE, SHALL BE INSTALLED WITH RESTRAINED JOINTS.</div><div>13. DEPTH OF COVER AS MEASURED FROM FINISHED GRADE TO TOP OF THE PIPELINE SHALL BE A MINIMUM OF 48 INCHES UNLESS OTHERWISE INDICATED. PIPELINES 12 INCHES AND LESS DEPTH OF COVER FROM FINISHED GRADE TO TOP OF PIPELINE SHALL BE MINIMUM 36 INCHES.</div><div>14. THE CONTRACTOR SHALL ADJUST (AS REQUIRED) PIPELINE ALIGNMENTS HORIZONTALLY AND/OR VERTICALLY TO AVOID CONFLICTS WITH ACTUAL FIELD CONDITIONS AS UNCOVERED DURING CONSTRUCTION. FIELD ADJUSTMENT SHALL BE COORDINATED WITH, AND APPROVED BY, THE ENGINEER.</div><div>15. THE CONTRACTOR SHALL BRACE AND PROTECT ALL EXISTING EXPOSED UTILITIES; AND COORDINATE HIS/HER EFFORTS WITH THE UTILITY OWNER.</div><div>16. THE CONTRACTOR SHALL PROTECT ALL EXISTING STRUCTURES, WATER AND SEWER LINES, STORM DRAINS, UTILITIES, DRIVEWAYS, SIDEWALKS, SIGNS, MAIL BOXES, FENCES, TREES, LANDSCAPING, AND ANY OTHER IMPROVEMENT OR FACILITY IN THE CONSTRUCTION AREA. THE CONTRACTOR SHALL REPAIR AND/OR REPLACE ANY DAMAGED ITEM DUE TO HIS CONSTRUCTION ACTIVITIES TO EQUAL OR BETTER THAN PRE-CONSTRUCTION CONDITIONS AT NO ADDITIONAL COST TO THE OWNER.</div><div>17. THE CONTRACTOR SHALL CONFORM TO ALL REQUIREMENTS SET FORTH IN MANATEE COUNTY'S PUBLIC WORKS STANDARDS (https://www.myanatee.org/).</div></div> <div><div>1. VERTICAL SEPARATION BETWEEN UNDERGROUND WATER MAINS AND SANITARY OR STORM SEWERS, AND WASTEWATER OR STORMWATER FORCE MAINS: NEW OR RELOCATED, UNDERGROUND WATER MAINS CROSSING ANY EXISTING OR PROPOSED PRESSURE-TYPE SANITARY SEWER, WASTEWATER OR STORMWATER FORCE MAINS SHALL BE LAID SO THE OUTSIDE OF THE WATER MAIN IS AT LEAST 18 INCHES ABOVE OR BELOW THE OUTSIDE OF THE OTHER PIPELINE. WATER MAIN TO BE ABOVE THE OTHER PIPELINE UNLESS NOTED OTHERWISE. NEW RELOCATED, UNDERGROUND WATER MAINS CROSSING ANY EXISTING OR PROPOSED PRESSURE-TYPE SANITARY SEWER, WASTEWATER OR STORMWATER FORCE MAIN SHALL HAVE ONE FULL LENGTH OF WATER MAIN PIPE CENTERED ABOVE OR BELOW THE OTHER PIPELINE SO THE WATER MAIN JOINTS WILL BE AS FAR AS POSSIBLE FROM THE OTHER PIPELINE. ALTERNATIVELY, AT SUCH CROSSINGS, THE PIPES SHALL BE ARRANGED SO THAT ALL WATER MAIN JOINTS ARE AT LEAST THREE FEET FROM ALL JOINTS IN STORM SEWERS AND STORMWATER FORCE MAINS AND AT LEAST SIX FEET FROM ALL JOINTS IN GRAVITY OR PRESSURE-TYPE SANITARY SEWERS AND WASTEWATER FORCE MAINS.</div><div>2. HORIZONTAL SEPARATION BETWEEN UNDERGROUND WATER MAINS AND SANITARY OR STORM SEWERS, AND WASTEWATER OR STORMWATER FORCE MAINS: NEW OR RELOCATED, UNDERGROUND WATER MAINS SHALL BE LAID TO PROVIDE A HORIZONTAL DISTANCE OF AT LEAST THREE FEET BETWEEN THE OUTSIDE OF THE WATER MAIN AND THE OUTSIDE OF ANY EXISTING OR PROPOSED STORM SEWER, STORMWATER FORCE MAIN OR RIGHT OF WAY LINES. NEW OR RELOCATED, UNDERGROUND WATER MAINS SHALL BE LAID TO PROVIDE A HORIZONTAL DISTANCE OF AT LEAST TEN FEET BETWEEN OUTSIDE OF THE WATER MAIN AND THE OUTSIDE OF ANY EXISTING OR PROPOSED GRAVITY OR PRESSURE-TYPE SANITARY SEWER, OR WASTEWATER FORCE MAIN.</div></div>								

REVISIONS				CHRISTOPHER K. MARTIN,P.E. P.E. LICENSE NUMBER 66598 AYRES ASSOCIATES 8875 HIDDEN RIVER PKWY, #200 TAMPA, FL 33637 CERTIFICATE OF AUTHORIZATION 4356	MANATEE COUNTY PUBLIC UTILITIES DEPARTMENT			GENERAL NOTES	SHEET NO.
DATE	DESCRIPTION		DATE		DESCRIPTION				
						ROAD NO.	COUNTY	FINANCIAL PROJECT ID	
						SR 684	MANATEE	436551-2-52-01	02

IFBC 19-TA003053CD

TRAFFIC NOTES & SPECIAL CONDITIONS:

1. THE CONTRACTOR SHALL BE RESPONSIBLE FOR THE MAINTENANCE OF TRAFFIC WHICH WILL CONFORM TO THE CURRENT EDITION OF THE FEDERAL MANUAL OF UNIFORM TRAFFIC CONTROL DEVICES (MUTCD) AND FDOT DESIGN STANDARDS 600 SERIES.

2. ALL BACKFILLED MATERIAL SUCH AS SAND, GRAVEL, DIRT, ETC., NOT USED BY THE END OF EACH WORK DAY, MUST BE STORED IN A LOCATION OTHER THAN ON PAVEMENT.

3. ALL DUST SHALL BE CONTROLLED ON SITE. ONLY AREAS SCHEDULED FOR IMMEDIATE CONSTRUCTION SHALL BE CLEARED OR STRIPPED OF PAVEMENT OR VEGETATION. WATERING, APPLICATION OF CALCIUM CHLORIDE OR OTHER PRIOR APPROVED MEASURE OF DUST CONTROL SHALL BE EMPLOYED TO PREVENT THE EMANATION OF DUST FROM THE SITE. PERMANENT PAVEMENT, GRASS, LANDSCAPING, AND OTHER SITE WORK SHALL BE INCORPORATED AS SOON AS POSSIBLE.

4. THE CONTRACTOR SHALL MAINTAIN TEMPORARY APPROACHES OR CROSSINGS IN A SAFE CONDITION AT INTERSECTIONS WITH STREETS, BUSINESSES, PARKING LOTS, AND RESIDENCES.

5. ALL EXISTING TRAFFIC SIGNS WITHIN THE PROPOSED CONSTRUCTION LIMITS ARE TO BE PROTECTED BY THE CONTRACTOR. CAUTION SHOULD BE EXERCISED WHILE RELOCATING EXISTING SIGNS WHERE DIRECTED. IF THE SIGNS ARE DAMAGED BEYOND USE, SIGNS SHALL BE REPLACED BY THE CONTRACTOR AT HIS EXPENSE.

6. THE CONTRACTOR SHALL PROVIDE A COURSE OF ACTION PLAN FOR THE OCCURRENCE OF AN ACCIDENTAL SPILL OF FUEL OR OTHER SUBSTANCE DURING CONSTRUCTION. ACTION PLAN SHALL BE SUBMITTED TO OWNER FOR ACCEPTANCE.

7. ALL FIELD LAYOUT AND SURVEYING FOR CONSTRUCTION OF THIS PROJECT SHALL BE PROVIDED BY THE CONTRACTOR AT HIS EXPENSE; UNDER THE DIRECTION OF A LICENSED PROFESSIONAL LAND SURVEYOR.

8. ELEVATIONS SHOWN ON PLANS ARE BASED ON NORTH AMERICAN VERTICAL DATUM OF 1988 (NAVD 1988).

9. PROPERTY MARKERS SHALL BE PROTECTED BY THE CONTRACTOR. THE CONTRACTOR'S REGISTERED SURVEYOR SHALL REPLACE ANY MARKERS THAT ARE DISTURBED.

10. THE CONTRACTOR'S SURVEYOR SHALL REPLACE ANY SURVEY MONUMENTS, PERMANENT MARKERS, OR TEMPORARY MARKERS WHICH ARE DAMAGED DURING CONSTRUCTION.

11. IF EITHER A THREATENED OR ENDANGERED PLANT OR ANIMAL SPECIES IS ENCOUNTERED DURING CONSTRUCTION, THE CONTRACTOR SHALL STOP WORK IMMEDIATELY AND NOTIFY THE ENGINEER OF RECORD.

12. MAIL SERVICE SHALL NOT BE INTERRUPTED ALONG THE CONSTRUCTION ROUTE. THIS MAY INCLUDE RELOCATION OF MAILBOXES THAT MAY BE AFFECTED BY CONSTRUCTION AND ALLOWING ACCESS TO UNITED STATES POSTAL SERVICE VEHICLES AND EMPLOYEES.

13. NO OPEN TRENCH SHALL BE ALLOWED ACROSS ANY STREET OR WITHIN 10 FEET OF ANY TRAVEL-WAY, EXCEPT WHEN WORK IS IN ACTUAL PROGRESS. NO OPEN TRENCH SHALL BE PERMITTED IN EXCESS OF 500 FEET OR LENGTH NECESSARY TO ACCOMMODATE PIPE INSTALLATION IN A SINGLE DAY, WHICHEVER IS GREATER.

14. THE CONTRACTOR SHALL CONFORM TO ALL SAFETY REQUIREMENTS OF POWER UTILITIES WHEN WORKING IN THE VICINITY OF OVERHEAD AND UNDERGROUND POWER UTILITIES.

15. IT SHALL BE THE CONTRACTOR'S RESPONSIBILITY TO CONSTRUCT HORIZONTAL AND VERTICAL TRANSITION OF PIPELINE BY DEFLECTION OF PIPE JOINTS USING NOT MORE THAN 75% OF THE MAXIMUM DEFLECTION RECOMMENDED BY THE MANUFACTURER.

16. SHOP DRAWINGS SHALL BE FURNISHED FOR APPROVAL OF ALL PIPE CONNECTIONS, TRANSITIONS, AND SPECIAL FITTINGS PRIOR TO FABRICATION OR DELIVERY TO JOB SITE.

17. CONTRACTOR TO FOLLOW MANATEE COUNTY PUBLIC UTILITIES DEPARTMENT (MCPUD) APPROVED PRODUCTS AND MATERIALS, TECHNICAL SPECIFICATIONS AND STANDARD DETAILS. LATEST EDITION CAN BE FOUND ON MCPUD WEBSITE.

18. CONTRACTOR SHALL PROVIDE TEMPORARY THRUST RESTRAINT, BRACING, TESTING PLUGS, AND OTHER DEVICES NECESSARY TO SUCCESSFULLY COMPLETE PRESSURE TESTING OF PIPING SYSTEMS.

19. ALL PROPOSED DUCTILE IRON PIPE AND FITTINGS WITHIN PROJECT LIMITS SHALL BE WRAPPED IN POLYETHYLENE WRAP IN ACCORDANCE WITH AWWA STANDARD C-105. SOME SECTIONS OF DUCTILE IRON PIPE SHALL BE WRAPPED WITH TWO (2) LAYERS OF POLYETHYLENE WRAP WHERE INDICATED ON THE DRAWINGS. POLYETHYLENE WRAP SHALL BE INCLUDED IN THE PRICE OF THE PIPE.

20. ALL EXISTING SEWER MAINS IDENTIFIED TO BE REMOVED OR PLACED OUT OF SERVICE CANNOT BE REMOVED OR PLACED OUT OF SERVICE UNTIL PROPOSED FACILITIES HAVE BEEN CONSTRUCTED, TESTED, PERMITTED, CLEARED, AND PLACED IN SERVICE. TIME IDENTIFIED IN THE SCHEDULE FOR EXISTING UTILITIES TO BE REMOVED SHALL COMMENCE WITHIN SEVEN (7) DAYS AFTER CLEARANCE HAS BEEN OBTAINED IN WRITING BY THE COUNTY FROM THE PERMITTING AGENCY.

21. SANITARY SEWER SERVICE AND WATER SERVICE MUST BE MAINTAINED FOR ALL CUSTOMERS AT ALL TIMES, EXCEPT FOR MINOR DISRUPTIONS DURING CONNECTIONS CHANGEOVERS AS NOTED IN GENERAL NOTES. CONTRACTOR SHALL COORDINATE ALL SYSTEM SHUT DOWNS WITH COUNTY OPERATIONS STAFF. MANATEE COUNTY PUBLIC UTILITIES DEPARTMENT (941) 792-8811 EXT. 5374.

22. WHERE WORK TO TIE-IN SIDESTREETS EXTEND BEYOND CORTEZ ROAD (SR 684) RIGHT-OF-WAY CONTRACTOR MUST OBTAIN RIGHT OF USE PERMIT FROM MANATEE COUNTY RIGHT-OF-WAY PERMIT MANAGEMENT OFFICE.

23. ALL UTILITY RELOCATION MUST BE IN PLACE, TESTED, PERMITTED, CLEARED AND OPERATIONAL PRIOR TO ROADWAY CONSTRUCTION BY OTHERS THAT IMPACTS EXISTING UTILITIES.

26. EXISTING SYMBOLOGY: SEE FDOT INDEX 002 FOR SYMBOLOGY.

27. IN THE EVENT OF A WATER OR SEWER MAIN BREAK, CALL 24 HOUR EMERGENCY NUMBER (941) 792-8811 EXT. 5268.

28. CONTRACTOR SHALL SUBMIT AND OBTAIN APPROVAL OF SHOP DRAWINGS, CONSTRUCTION SCHEDULE AND THE FOLLOWING PLANS PRIOR TO BEGINNING CONSTRUCTION (NOT LIMITED TO):

A. SHUTDOWN SCHEDULE AND PLAN TO INCLUDE BUT NOT LIMITED TO PIPE DEWATERING AND DISPOSAL PLANS; CONNECTION SCHEDULE FOR WATER MAINS (INCLUDING LINESTOPS) RECLAIMED WATER MAIN, AND RAW WATER MAIN; SAMPLING PLAN AND LOCATIONS FOR FOR BACTRIOLOGICAL TESTING; PRESSURE TESTING SCHEDULE; LINESTOP LOCATIONS.

B. FORCE MAIN BYPASS PLAN.

30. CONTRACTOR TO COORDINATE WITH FLORIDA POWER & LIGHT (FPL) FOR POWER POLES NEEDING SUPPORT DURING CONSTRUCTION. CONTRACTOR TO TAKE PRECAUTIONS TO PROTECT ALL UTILITIES AND UTILITY POLES.

31. ALL ROAD CROSSINGS SHALL BE JACK AND BORE.

32. ALL CONCRETE THRUST BLOCKS INSTALLED FOR TESTING PROCESS SHALL BE REMOVED AND DISPOSED OF BY THE CONTRACTOR PRIOR TO FINAL ACCEPTANCE.

33. PLAN STATIONING FOR ISOLATION VALVES AND AIR RELEASE VALVES IS APPROXIMATE. THE CONTRACTOR SHALL INSTALL ALL REQUIRED AIR RELEASE VALVES AT THE HIGHEST ACTUAL POINT(S) IN THE PIPELINE. LOCATIONS OF ISOLATION VALVES AND AIR RELEASE VALVES MUST BE SUBMITTED TO THE ENGINEER OF RECORD FOR APPROVAL PRIOR TO INSTALLATION.

34. CONNECTIONS TO WASTE WATER FORCE MAINS WILL BE PERFORMED DURING NON-PEAK HOURS (9:00 PM TO 6:00 AM). CONNECTIONS SHALL NOT BE SCHEDULED DURING COUNTY HOLIDAYS, WEEKENDS, WITHIN 72 HOURS OF POSSIBLE HURRICANE OR TROPICAL STORM LANDING, OR DURING TIMES WHEN COUNTY HAS INITIATED AN EMERGENCY ALERT.

35. CONTRACTOR TO COORDINATE WITH THE COUNTY CONCERNING WASTEWATER TRANSPORT/CONVEYANCE FROM AFFECTED PUMP STATION DURING CONSTRUCTION. CONTRACTOR TO DEVELOP BYPASS (CONVEYANCE / TRANSPORT) PLAN FOR AFFECTED PUMP STATIONS AND CONDUCT BYPASS (CONVEYANCE / TRANSPORT) OF WASTEWATER DURING CONSTRUCTION AT NO ADDITIONAL COST TO THE COUNTY. COST FOR WASTEWATER BYPASS (CONVEYANCE / TRANSPORT) TO BE INCORPORATED INTO COST OF FORCE MAIN FURNISH AND INSTALLATION.

36. NO PIPES OF ANY KIND ATTACHED TO ACTIVE OR IN SERVICE WATER, WASTEWATER, RECLAIMED WATER SYSTEMS MAY BE LEFT OPEN. PIPE MUST BE CAPPED OR PLUGGED AND RESTRAINED.

37. PROPOSED AND AFFECTED EXISTING PIPELINES ARE TO BE RESTRAINED UNLESS OTHERWISE NOTED.

ABBREVIATIONS

CI

DIP

FM

HDPE

MH

PVC

RCW

SAN

VCP

WM

CAST IRON

DUCTILE IRON PIPE

FORCE MAIN

HIGH-DENSITY POLYETHYLENE

MAN HOLE

POLYVINYL CHLORIDE

RECLAIM WATER

SANITARY

VITRIFIED CLAY PIPE

WATER MAIN

LEGEND

SANITARY SEWER GRAVITY/FORCE MAIN

SANITARY SEWER GRAVITY/FORCE MAIN (QUALITY LEVEL B)

SANITARY SEWER GRAVITY/FORCE MAIN (QUALITY LEVEL C)

SANITARY SEWER GRAVITY/FORCE MAIN (QUALITY LEVEL D)

WATER MAIN

WATER MAIN (QUALITY LEVEL B)

WATER MAIN (QUALITY LEVEL C)

WATER MAIN (QUALITY LEVEL D)

RECLAIM WATER MAIN

RECLAIM WATER MAIN (QUALITY LEVEL B)

RECLAIM WATER MAIN (QUALITY LEVEL C)

RECLAIM WATER MAIN (QUALITY LEVEL D)

REMAIN (GREEN)

REMOVE (RED)

PROPOSED (BROWN)

PROPOSED DRAINAGE (BY OTHERS)

---S---

---S(B)---

---S(C)---

---S(D)---

---W---

---W(B)---

---W(C)---

---W(D)---

---NPW(B)---

---NPW(C)---

---NPW(D)---

---S---

---S(B)---

---S(C)---

---S(D)---

---W---

---W(B)---

---W(C)---

---W(D)---

---NPW(B)---

---NPW(C)---

---NPW(D)---

=====

=====

=====

=====

STORM PIPE OR INLET

REVISIONS

DATE

DESCRIPTION

DATE

DESCRIPTION

CHRISTOPHER K. MARTIN,P.E.
P.E. LICENSE NUMBER 66598
AYRES ASSOCIATES
8875 HIDDEN RIVER PKWY, #200
TAMPA, FL 33637
CERTIFICATE OF AUTHORIZATION 4356

MANATEE COUNTY PUBLIC UTILITIES DEPARTMENT

ROAD NO.

COUNTY

FINANCIAL PROJECT ID

SR 684

MANATEE

436551-2-52-01

GENERAL NOTES

03

ADDENDUM NO. 2

REVISED BID ATATCHMENT 5

THE OFFICIAL RECORD OF THIS SHEET IS THE ELECTRONIC FILE DIGITALLY SIGNED AND SEALED UNDER RULE 61G15-23.004, F.A.C.

SCALE
1"=50' HORIZ.
1"=5' VERT.

Duarte, Alvaro 8/9/2019 9:36:54 AM J:\66-0172.03 - Manatee County - Cortez FM Relocation\Drawings\66-0172.03 Plan-Profile.dwg

IFBQ 19-TA003053CD5, 46.5' RT.
F&I: 8" 22.5° BEND DI/MJ

STA. 67+51.28, 38.5' RT.
F&I: 8" 45° BEND DI/MJ

STA. 68+59.28, 38.5' RT.
F&I: 8" 90° BEND DI/MJ

F&I: 135 LF OF 8" DIP RCW
CLASS-50

ADDENDUM NO. 2
STA. 66+42, 31.0' LT.
F&I: 6" (2) 90° BENDS
(VERTICAL)
(ROUNDHOUSE CONNECTION)
STA. 66+42, 27.0' LT.
F&I: 20"x6" TAPPING
SLEEVE & 6" GATE VALVE

EXIST. PROPERTY
LINE
STA. 66+42, 30.0' LT.
F&I: 14" STEEL CASING
EX. 8" FM
(TO REMAIN)

PROTECT EX. 20" WM IN-PLACE
F&I: 94 LF OF 6" PVC FM C-900 DR-18
66 LF OF 14" STEEL CASING
BY JACK & BORE

STA. 66+42, 39.5' RT.
F&I: 14" STEEL CASING

SR 684 (CORTEZ RD W)
PT STA. 64+40.14

EX. 6" WM
(TO REMAIN)

6" GATE VALVE
ADJUST & MODIFY
TO FINAL GRADE
STA. 66+42, 45.8' RT.
F&I: 6" 45° BEND DI/MJ
(VERTICAL)

STA. 66+42, 50.2' RT.
F&I: 6" 22.5° BEND DI/MJ
STA. 67+10.99 @ SR 684 =
STA. 200+00.00 @ 119th ST SOUTH

STA. 66+42, 40.5' RT.
F&I: 6" 45° BEND DI/MJ
(VERTICAL)

STA. 66+42, 50.2' RT.
F&I: 6" 22.5° BEND DI/MJ
STA. 67+10.99 @ SR 684 =
STA. 200+00.00 @ 119th ST SOUTH

LEGEND

- WIDENING/RECONSTRUCTION
- PAVEMENT TEXTURE
- DETECTABLE WARNINGS

REVISED BID ATATCHMENT 5

SEE UTILITY ADJUSTMENT
PLAN-PROFILE 09

SEE UTILITY ADJUSTMENT
PLAN-PROFILE 08

STA. 67+25.71 @ SR 684 =
STA. 100+00.00 @ 119th ST NORTH
PROPOSED R/W

STA. 67+25.71 @ SR 684 =
STA. 100+00.00 @ 119th ST NORTH
PROPOSED R/W

UTILITY ADJUSTMENT PLAN-PROFILE

SHEET
NO.
06

CHRISTOPHER K. MARTIN, P.E.
P.E. LICENSE NUMBER 66598
AYRES ASSOCIATES
8875 HIDDEN RIVER PKWY, #200
TAMPA, FL 33637
CERTIFICATE OF AUTHORIZATION 4356

MANATEE COUNTY PUBLIC
UTILITIES DEPARTMENT

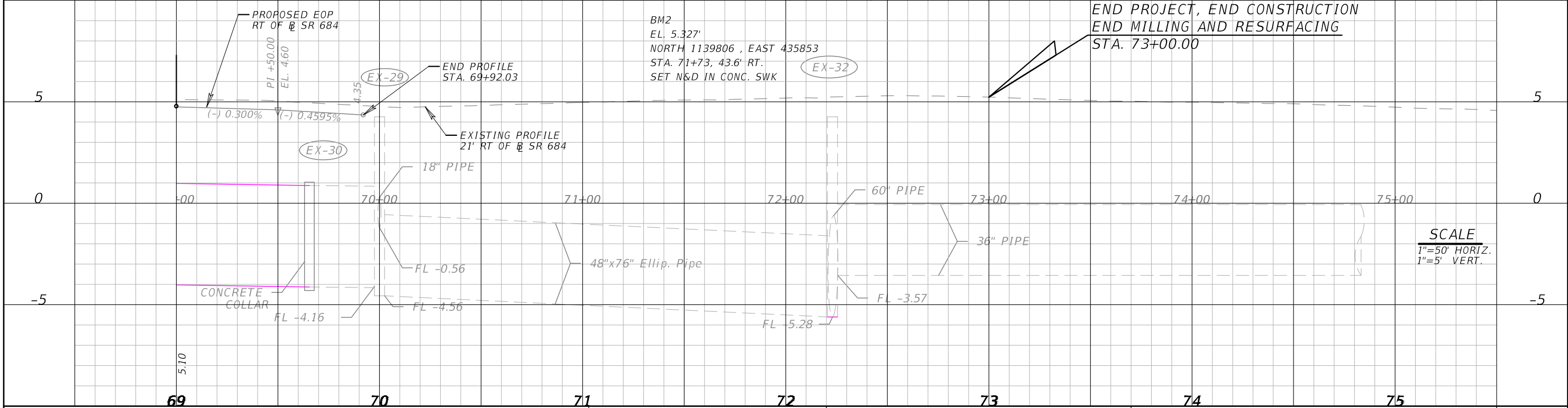
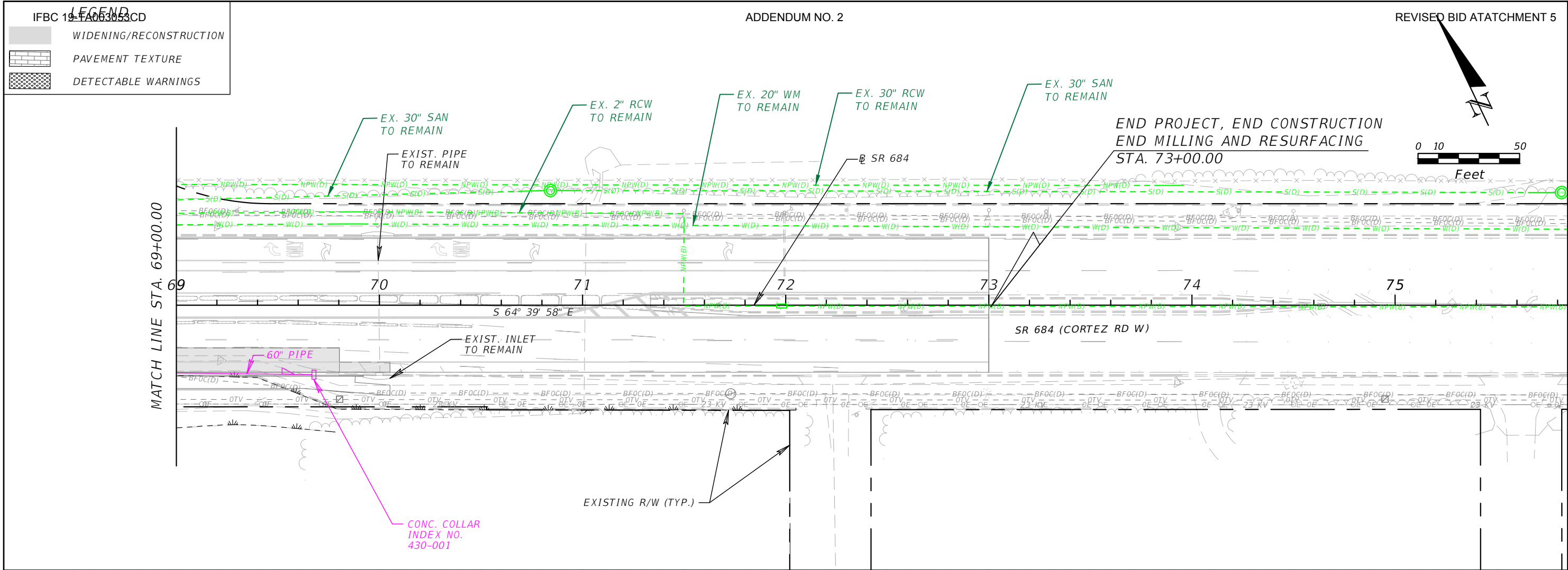
ROAD NO.	COUNTY	FINANCIAL PROJECT ID
SR 684	MANATEE	436551-2-52-01

Duarte, Alvaro

8/9/2019 9:37:26 AM

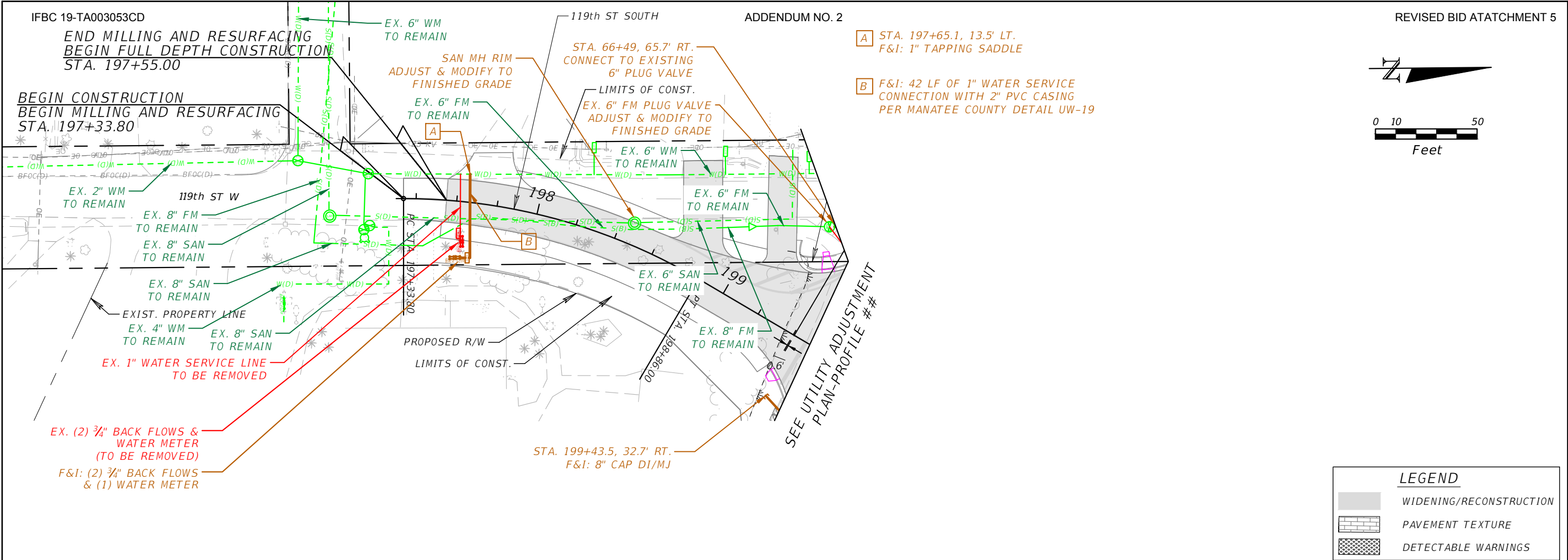
J:\66-0172.03 - Manatee County - Cortez FM Relocation\Drawings\66-0172.03 Plan-Profile.dwg

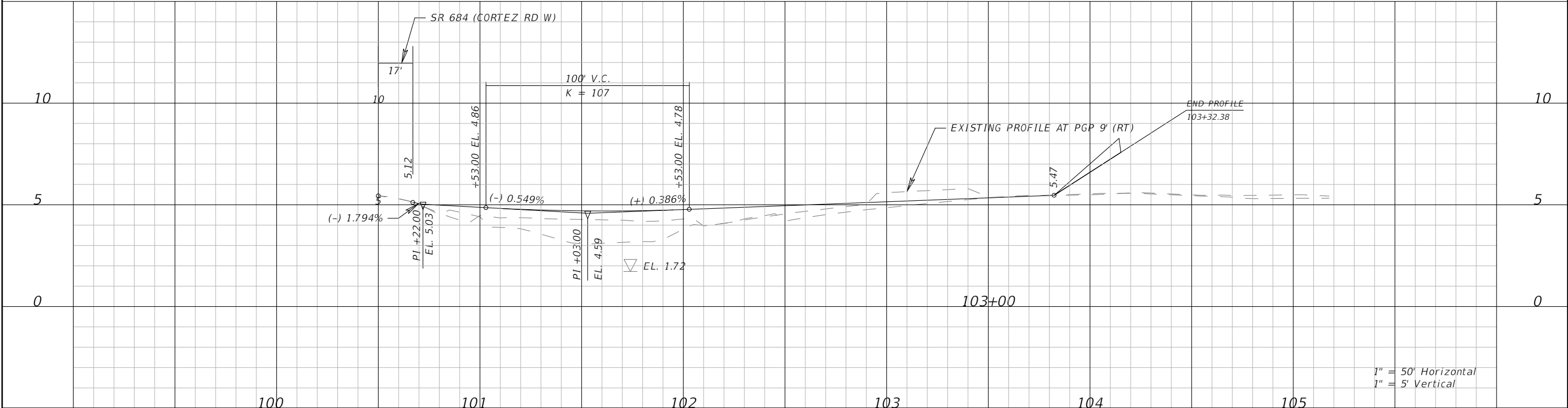
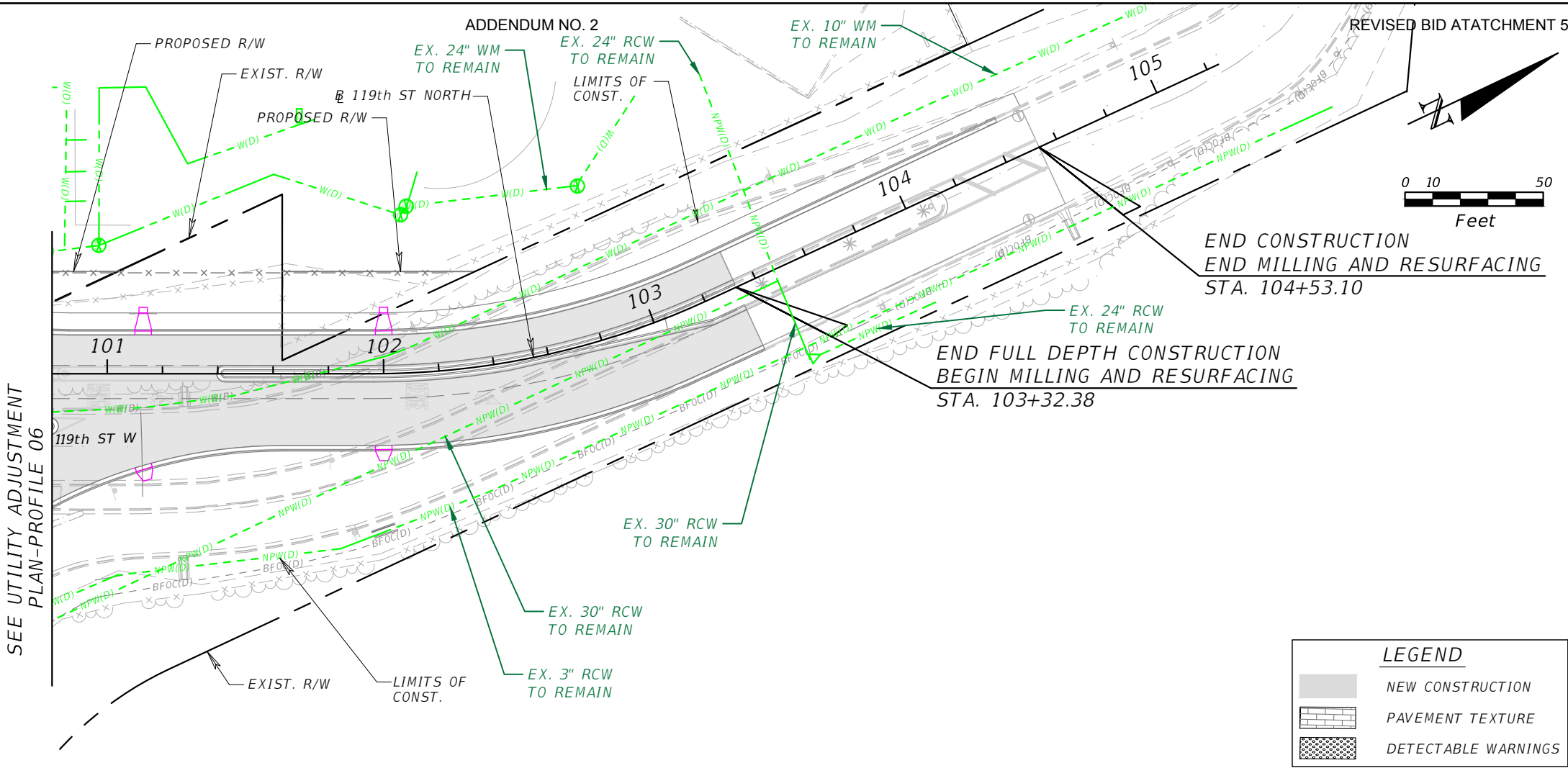
THE OFFICIAL RECORD OF THIS SHEET IS THE ELECTRONIC FILE DIGITALLY SIGNED AND SEALED UNDER RULE 61G15-23.004, F.A.C.



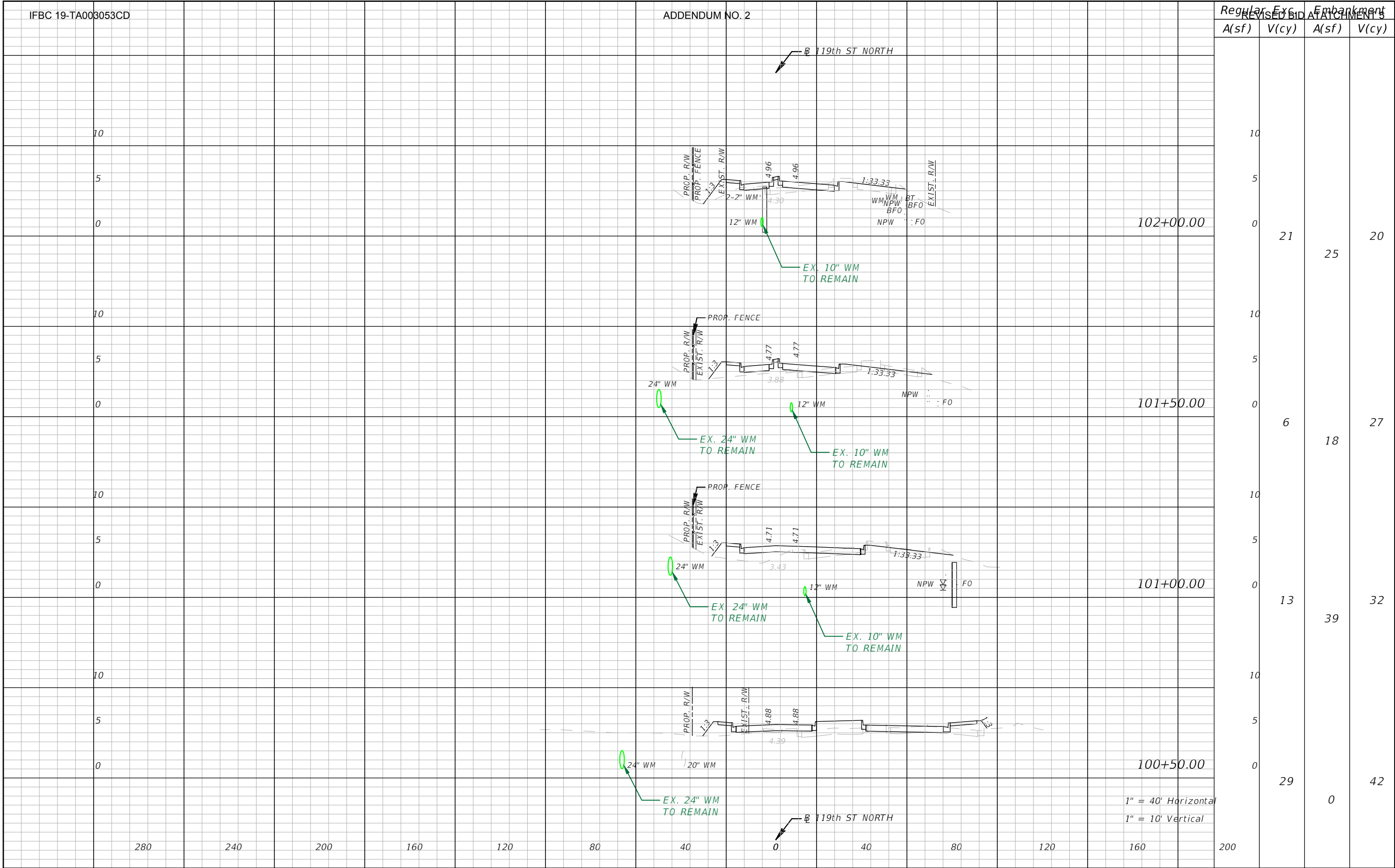
REVISIONS				CHRISTOPHER K. MARTIN, P.E. P.E. LICENSE NUMBER 66598 AYRES ASSOCIATES 8875 HIDDEN RIVER PKWY, #200 TAMPA, FL 33637 CERTIFICATE OF AUTHORIZATION 4356	MANATEE COUNTY PUBLIC UTILITIES DEPARTMENT			UTILITY ADJUSTMENT PLAN-PROFILE	SHEET NO. 07
DATE	DESCRIPTION	DATE	DESCRIPTION		ROAD NO.	COUNTY	FINANCIAL PROJECT ID		
----	----	----	----		SR 684	MANATEE	436551-2-52-01		

THE OFFICIAL RECORD OF THIS SHEET IS THE ELECTRONIC FILE DIGITALLY SIGNED AND SEALED UNDER RULE 61G15-23.004, F.A.C.





THE OFFICIAL RECORD OF THIS SHEET IS THE ELECTRONIC FILE DIGITALLY SIGNED AND SEALED UNDER RULE 61G15-23.004, F.A.C.

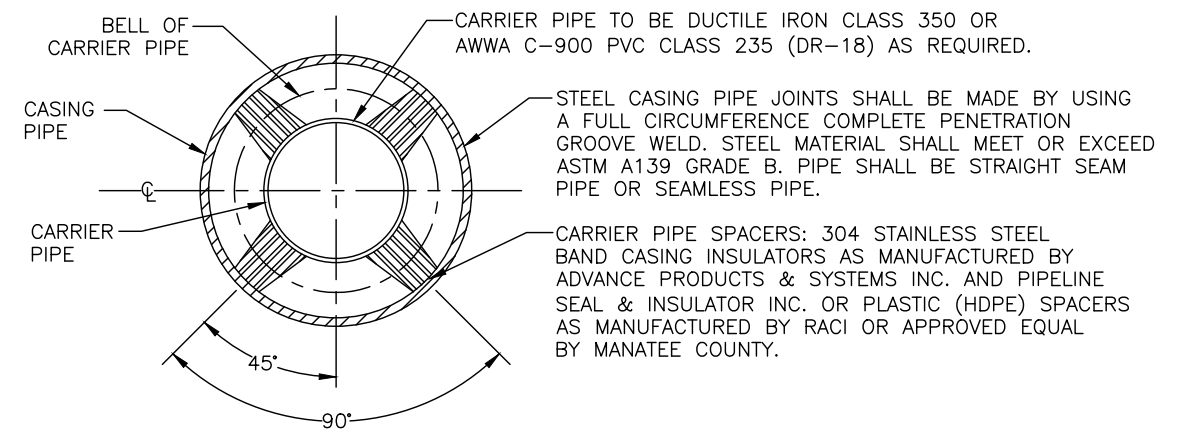
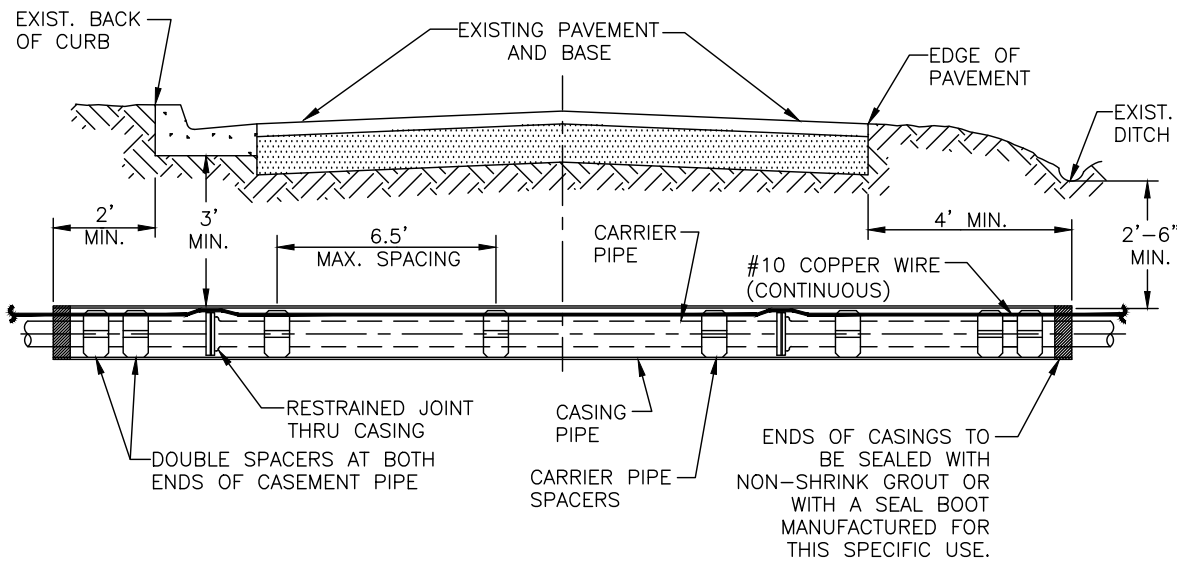


REVISIONS				CHRISTOPHER K. MARTIN, P.E. P.E. LICENSE NUMBER 66598 AYRES ASSOCIATES 8875 HIDDEN RIVER PKWY, #200 TAMPA, FL 33637 CERTIFICATE OF AUTHORIZATION 4356	MANATEE COUNTY PUBLIC UTILITIES DEPARTMENT			CROSS SECTIONS 119TH ST W		SHEET NO. 14
DATE	DESCRIPTION	DATE	DESCRIPTION		ROAD NO.	COUNTY	FINANCIAL PROJECT ID			
----	----	----	----		SR 684	MANATEE	436551-2-52-01			

THE OFFICIAL RECORD OF THIS SHEET IS THE ELECTRONIC FILE DIGITALLY SIGNED AND SEALED UNDER RULE 61G15-23.004, F.A.C.

IFBC 19-TA003053CD										ADDENDUM NO. 2										REVISIONS				REGULAR BID ATTACHMENT 5							
																				Regular				Exc.				Embankment			
A(sf)										V(cy)										A(sf)				V(cy)							
10										10										10				10							
5										5										5				5							
0										0										0				0							
10										10										10				10							
5										5										5				5							
0										0										0				0							
10										10										10				10							
5										5										5				5							
0										0										0				0							
10										10										10				10							
5										5										5				5							
0										0										0				0							
10										10										10				10							
5										5										5				5							
0										0										0				0							
10										10										10				10							
5										5										5				5							
0										0										0				0							
10										10										10				10							
5										5										5				5							
0										0										0				0							
10										10										10				10							
5										5										5				5							
0										0										0				0							
10										10										10				10							
5										5										5				5							
0										0										0				0							
10										10										10				10							
5										5										5				5							
0										0										0				0							
10										10										10				10							
5										5										5				5							
0										0										0				0							
10										10										10				10							
5										5										5				5							
0										0										0				0							
10										10										10				10							
5										5										5				5							
0										0										0				0							
10										10										10				10							
5										5										5				5							
0										0										0				0							
10										10										10				10							
5										5										5				5							
0										0										0				0							
10										10										10				10							
5										5										5				5							
0										0										0				0							
10										10										10				10							
5										5										5				5							
0										0										0				0							
10										10										10				10							
5										5										5				5							
0										0										0				0							
10										10										10				10							
5										5										5				5							
0										0										0				0							
10										10										10				10							
5										5										5				5							
0										0										0				0							
10										10										10				10							
5										5										5				5							
0										0										0				0							
10										10										10				10							
5										5										5				5							
0										0										0				0							
10										10										10				10							
5										5										5				5							
0										0										0				0							
10										10										10				10							
5										5										5				5							
0										0										0				0							
10										10										10				10							
5										5										5				5							
0										0										0				0							
10										10										10				10							
5										5										5				5							
0										0										0				0							
10										10										10				10							
5										5										5				5							
0										0										0				0							
10										10										10				10							
5										5										5				5							
0										0										0				0							
10										10										10				10							
5										5										5				5							
0										0										0				0							
10										10										10				10							
5										5										5				5							
0										0										0				0							
10										10										10				10							
5										5										5				5							
0										0										0				0							
10										10										10				10							
5										5										5				5							
0										0										0				0							
10										10										10				10							
5										5										5				5							
0										0										0				0							
10										10										10				10							
5										5										5				5							
0										0										0				0							
10										10										10				10							
5										5										5				5							
0										0										0				0							
10										10										10				10							
5										5										5				5							
0										0										0				0							
10										10										10				10							
5										5										5				5							
0										0										0				0							
10										10										10				10							
5										5										5				5							
0										0										0				0							
10										10										10				10							
5										5										5				5							
0										0										0				0							
10										10										10				10							
5										5										5				5							
0										0										0				0							
10										10										10				10							
5										5										5				5							
0										0										0				0							
10										10										10				10							
5										5										5				5							
0										0										0				0							
10										10										10				10							
5										5										5				5							
0										0										0				0							
10										10										10				10							
5										5										5				5							
0										0										0				0							
10										10										10				10							
5										5										5				5							
0										0										0				0							
10										10										10				10							
5										5										5				5							
0										0										0				0							
10										10										10				10							
5										5										5				5							
0										0										0				0							
10										10										10				10							
5										5										5				5							
0										0										0				0							
10										10										10				10							
5										5										5				5							
0										0										0				0							
10										10										10				10							
5										5										5				5							
0										0										0				0							
10										10										10				10							
5										5										5				5							
0										0										0				0							
10										10										10				10							
5										5										5				5							
0										0										0				0							
10										10										10				10							
5										5										5				5							
0										0										0				0							
10										10										10				10							
5										5										5				5							
0										0										0				0							
10										10										10				10							
5										5										5				5							
0										0										0				0							
10										10										10				10							
5										5										5				5							
0										0										0				0							
10										10										10				10							
5										5										5				5							
0										0										0				0							
10										10										10				10							
5										5										5				5							
0										0										0				0							
10										10										10				10							
5										5										5				5							
0										0										0				0							
10										10										10				10							
5										5										5				5							
0										0										0				0							
10										10										10				10							
5										5										5				5							
0										0										0				0							
10										10										10				10							
5										5										5				5							
0										0										0				0							
10										10										10				10							
5										5										5				5							
0										0										0				0							
10										10										10				10							
5										5										5				5							
0										0										0				0							
10										10										10				10							
5										5										5				5							
0										0										0				0							
10										10										10				10							
5										5										5				5							
0										0										0				0							
10										10										10				10							
5										5										5				5							
0										0										0				0							
10										10										10				10							
5										5										5				5							
0										0										0				0							
10										10										10				10							
5										5										5				5							
0										0										0				0							
10										10										10				10							
5										5										5				5							
0										0										0				0							
10										10										10				10							
5										5										5				5							
0										0										0				0							
10										10										10				10							
5										5										5				5							
0										0										0				0							
10										10										10				10							
5										5										5				5							
0										0										0				0							
10										10										10				10							
5										5										5				5							
0										0										0				0							
10										10										10				10							
5										5										5				5							
0										0										0				0							
10										10										10				10							
5										5										5				5							
0										0										0				0							
10										10										10				10							
5										5										5				5							
0										0										0				0							
10										10										10				10							
5										5										5				5							
0										0										0				0							
10										10										10				10							
5										5										5				5							
0										0										0				0							
10										10										10				10							
5										5										5				5							
0										0										0				0							
10										10										10				10							
5										5										5				5							
0										0										0				0							
10										10										10				10							
5										5										5				5							
0										0										0				0							
10										10										10				10							
5										5										5				5							
0										0										0				0							
10										10										10				10							
5										5										5				5							
0										0										0				0							
10										10										10				10							
5										5										5				5							
0										0										0				0							
10										10										10				10							
5										5										5				5							
0										0										0				0							
10										10										10				10							
5										5										5				5							
0										0										0				0							
10										10										10				10							
5										5										5				5							
0										0										0				0							
10										10										10				10							
5										5										5				5							
0										0										0				0							
10										10										10				10							
5										5										5				5							
0										0										0				0							
10										10										10				10							
5										5										5				5							
0										0										0				0							
10										10										10				10							
5										5										5				5							
0										0										0				0							
10										10										10				10							
5										5										5				5							
0										0										0				0							
10										10										10				10							
5										5										5				5							
0										0										0				0							

THE OFFICIAL RECORD OF THIS SHEET IS THE ELECTRONIC FILE DIGITALLY SIGNED AND SEALED UNDER RULE 61G13-23.004, F.A.C.



CARRIER SIZE & MINIMUM CASING SIZE									
CARRIER	4"	6"	8"	10"	12"	14"	16"	18"	20"
CASING	12"	14"	18"	20"	24"	30"	30"	36"	36"
CASING / WALL THICKNESS	0.188	0.188	0.250	0.250	0.344	0.406	0.406	0.406	0.406

- NOTES:
1. THE ENGINEER OF RECORD MAY SELECT LARGER CASING DIAMETERS.
 2. FOR JACK & BORE SPECIFICATIONS UNDER STATE ROADS AND RAILROADS REFER TO THE F.D.O.T. UTILITY ACCOMMODATION MANUAL, LATEST EDITION.

MANATEE COUNTY PUBLIC WORKS DEPARTMENT			JACK & BORE CROSSING	UG-3
REV.BY	DATE	<div>MAY 10, 2011</div> <div>DATE OF APPROVAL</div>		
CLB/BR	11/10			

PAGE 103

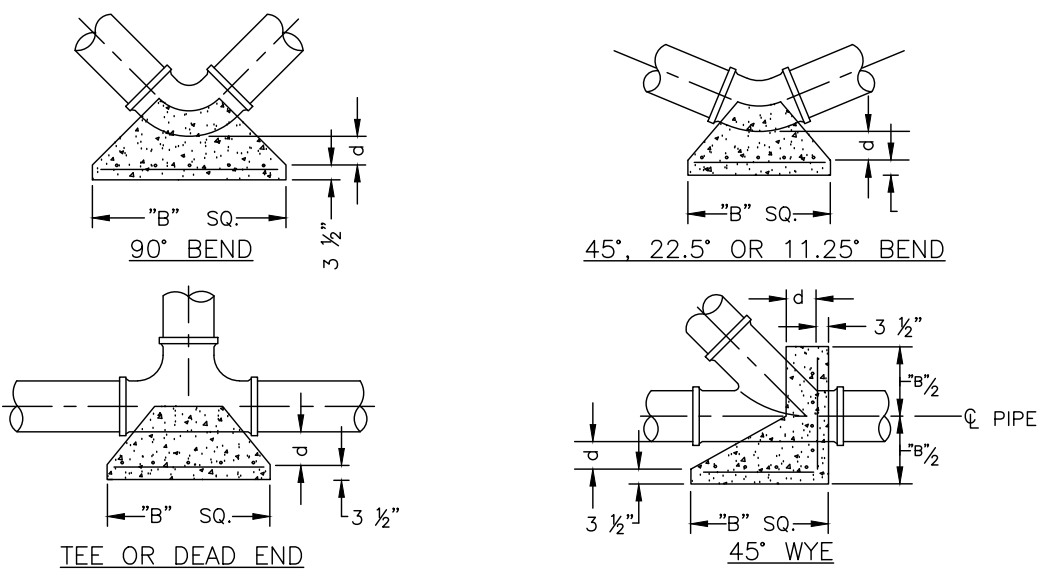
THRUST BLOCK DIMENSIONS B ft. x d inches										
PIPE SIZE (IN.)	90°BEND		45°BEND		22.5°BEND		11.25°BEND		DEAD END & TEE	
	B	d	B	d	B	d	B	d	B	d
4	1.5	3 ½	1.1	3 ½	0.8	3 ½	0.6	3 ½	1.3	3 ½
6	2.2	5 ¼	1.6	3 ¾	1.2	3 ½	0.8	3 ½	1.9	4 ½
8	2.9	7	2.1	5	1.5	3 ½	1.1	3 ½	2.4	5 ¾
10	3.5	8 ½	2.6	6 ¼	1.9	4 ½	1.3	3 ½	3.0	7 ¼
12	4.2	10	3.1	7 ½	2.2	5 ¼	1.6	3 ¾	3.5	8 ¼
14	4.9	11 ¾	3.6	8 ¾	2.6	6 ¼	1.8	4 ¼	4.1	9 ¾
16	5.5	13 ¼	4.1	9 ¾	2.9	7	2.1	5	4.7	11 ¼
18	6.2	15	4.6	11	3.3	8	2.3	5 ½	5.2	12 ½
20	6.9	16 ½	5.0	12	3.6	8 ¾	2.6	6 ¼	5.8	14
24	8.2	19 ¾	6.0	14 ½	4.3	10 ¼	3.1	7 ½	6.9	16 ½
30	10.1	24 ¼	7.5	18	5.3	12 ¾	3.8	9	8.5	20 ½
36	12.1	29	8.9	21 ¼	6.4	15 ¼	4.5	10 ¾	10.2	24 ½

REINFORCEMENT MAT SCHEDULE

FOR DIM. "B" BETWEEN 5.75' & 12.5' USE #4 @ 8" EACH WAY

FOR DIM. "B" LESS THAN 5.75' USE #3 @ 8" EACH WAY

- NOTES:
1. ALL THRUST BLOCKS SHALL BE CAST IN PLACE. FITTINGS ADJACENT TO THRUST BLOCKS SHALL BE WRAPPED IN POLYETHYLENE.
 2. THIS TABLE IS BASED ON WATER PRESSURE=180 PSI WITH AN ALLOWABLE SOIL BEARING PRESSURE=2000 PSF, CONCRETE STRENGTH f_c =3000 PSI, REINFORCEMENT f_y =60.0 KSI. THRUST BLOCK SHALL BE CAST AGAINST FIRM UNDISTURBED SOIL.
 3. FOR LARGER "B" DIMENSIONS IT IS NECESSARY TO CHECK THAT PIPE IS SUFFICIENTLY DEEP TO ALLOW 15" MIN. SOIL COVER OVER TOP EDGE OF THRUST BLOCK.
 4. RESTRAINED JOINTS MAY BE USED IN LIEU OF THRUST BLOCKS TO SAVE SPACE. THRUST BLOCKS SHALL BE USED IN SITUATIONS WHERE THRUST BLOCKS AND RESTRAINED JOINTS ARE BOTH REQUIRED.



MANATEE COUNTY PUBLIC WORKS DEPARTMENT			CONCRETE THRUST BLOCKS	UG-7
REV.BY	DATE	<div>MAY 10, 2011</div> <div>DATE OF APPROVAL</div>		
CLB/BR	11/10			
				PAGE 107

REVISIONS				CHRISTOPHER K. MARTIN, P.E. P.E. LICENSE NUMBER 66598 AYRES ASSOCIATES 8875 HIDDEN RIVER PKWY, #200 TAMPA, FL 33637 CERTIFICATE OF AUTHORIZATION 4356	MANATEE COUNTY PUBLIC UTILITIES DEPARTMENT			TYPICAL DETAILS	SHEET NO. 16
DATE	DESCRIPTION	DATE	DESCRIPTION		ROAD NO.	COUNTY	FINANCIAL PROJECT ID		
----	----				SR 684	MANATEE	436551-2-52-01		

REQUIRED LENGTH OF RESTRAINED JOINT PIPE
FOR DR-18 PVC PIPE

MAIN PIPE SIZE	HORIZ. BENDS			TEES					REDUCERS			PLUGS & VALVES
	90°	45°	22.5°	SIZE / LENGTH					SIZE / LENGTH			
24	90	38	18	X24 169	X20 132	X16 90	X12 38	X10 6	X20 64	X16 117	X12 158	214
20	78	32	16	X20 141	X16 101	X12 53	X10 24	X8 1	X16 65	X12 115	X10 149	184
16	66	27	13	X16 111	X12 67	X10 41	X8 12		X12 64	X10 107	X8 111	151
12	52	22	10	X12 80	X10 56	X8 31	X6 1		X10 58	X8 62	X6 86	118
10	44	18	9	X10 63	X8 40	X6 7			X8 33	X6 61	X4 81	100
8	37	15	7	X8 49	X6 18	X4 1			X6 35	X4 60		83
6	29	12	6	X6 29	X4 1				X4 33			63
4	21	8	4	X4 12								45

NOTES:

1. RESTRAIN 11.25° BENDS 50% OF LENGTH FOR 22.5° BENDS.
2. ALL VALVES AND FITTINGS SHALL BE RESTRAINED TO THE CONNECTINGSECTIONS OF PIPE.
3. ALL ISOLATIONVALVES MUST BE PROPERLY ANCHORED OR RESTRAINED TO RESIST A 180 PSI TEST PRESSURE IN EITHER DIRECTION.
4. PIPE SIZES ARE GIVEN IN INCHES.
5. RESTRAINED PIPE LENGTHS ARE GIVEN IN FEET.
6. LENGTHS SHOWN ARE FOR A TEST PRESURE OF 180 PSI.
7. THE RESTRAINED LENGTHS SHOWN IN THESE TABLES ARE BASED ON SOIL CLASSIFICATION SP WITH AWWA TYPE 3 TRENCH CONDITIONS, 180 PSI TEST PRESSURE, 3 FEET OF COVER AND 1.5 FACTOR OF SAFTEY. ACTUAL BURY CONDITIONS MUST BE DETERMINED BY THE ENGINEER OF RECORD AND THE RESTRAINED LENGTHS MODIFIED ACCORDINGLY.
8. RESTRAINED LENGTHS TO BE APPLIED TO PIPELINES PER DETAIL RESTRAINED LENGTHS FOR PIPE.

MANATEE COUNTY PUBLIC WORKS DEPARTMENT			RESTRAINED LENGTHS FOR PVC PIPE	UG—8 PAGE 108
REV.BY	DATE	<div>MAY 10, 2011</div> <div>DATE OF APPROVAL</div>		
CLB/BR	11/10			

REQUIRED LENGTH OF RESTRAINED JOINT PIPE
FOR DIP (POLY-WRAPPED)

MAIN PIPE SIZE	HORIZ. BENDS			TEES						REDUCERS				PLUGS & VALVES
	90°	45°	22.5°	SIZE / LENGTH						SIZE / LENGTH				
36	142	59	28	x36 393	x30 318	x24 232	x20 165	x16 84	x12 1	x30 137	x24 247	x20 309	x16 359	453
30	124	51	25	x30 333	x24 252	x20 189	x16 115	x12 23	x10 1	x24 137	x20 213	x16 276		391
24	106	44	21	x24 270	x20 211	x16 143	x12 61	x10 10	x8 1	x20 98	x16 178	x12 241		327
20	92	38	18	x20 225	x16 161	x12 85	x10 39	x8 1		x16 98	x12 176	x10 227		280
16	77	32	15	x16 177	x12 107	x10 65	x8 19	x6 1		x12 98	x10 163	x8 169		231
12	61	25	12	x12 127	x10 89	x8 50	x6 1			x10 88	x8 96	x6 131		181
10	52	22	10	x10 101	x8 64	x6 11				x8 51	x6 94	x4 125		153
8	44	18	9	x8 78	x6 30	x4 1				x6 54	x4 92			128
6	34	14	7	x6 46	x4 1					x4 50				98
4	24	10	5	x4 19										69

REQUIRED LENGTH OF RESTRAINED JOINT PIPE
FOR DIP (NON-WRAPPED)

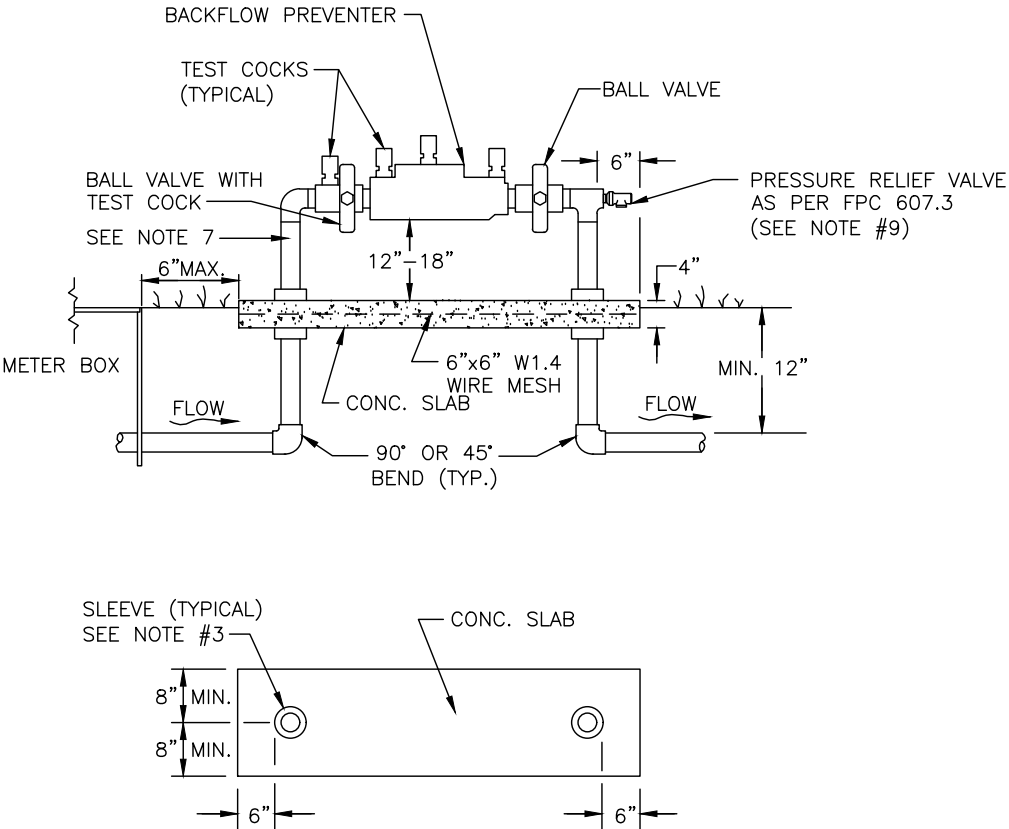
MAIN PIPE SIZE	HORIZ. BENDS			TEES						REDUCERS				PLUGS & VALVES
	90°	45°	22.5°	SIZE / LENGTH						SIZE / LENGTH				
36	100	42	20	x36 / 163	x30 / 132	x24 / 96	x20 / 68	x16 / 35	x12 / 1	x30 / 57	x24 / 103	x20 / 128	x16 / 149	188
30	88	37	18	x30 / 138	x24 / 104	x20 / 78	x16 / 48	x12 / 10	x10 / 1	x24 / 57	x20 / 88	x16 / 114		162
24	75	31	15	x24 / 112	x20 / 87	x16 / 59	x12 / 25	x10 / 4	x8 / 1	x20 / 40	x16 / 74	x12 / 100		135
20	65	27	13	x20 / 93	x16 / 67	x12 / 35	x10 / 16	x8 / 1		x16 / 41	x12 / 73	x10 / 94		116
16	54	22	11	x16 / 73	x12 / 44	x10 / 27	x8 / 8	x6 / 1		x12 / 41	x10 / 68	x8 / 70		96
12	43	18	8	x12 / 53	x10 / 37	x8 / 21	x6 / 1			x10 / 37	x8 / 40	x6 / 54		75
10	37	15	7	x10 / 42	x8 / 26	x6 / 5				x8 / 21	x6 / 39	x4 / 52		63
8	30	13	6	x8 / 32	x6 / 12	x4 / 1				x6 / 22	x4 / 38			53
6	24	10	5	x6 / 19	x4 / 1					x4 / 21				41
4	17	7	3	x4 / 8										29

NOTE:

SEE RESTRAINED LENGTHS FOR PVC PIPE DETAIL FOR NOTES 1 THROUGH 8 THAT ARE ALSO APPLICABLE TO RESTRAINED LENGTHS FOR DIP.

MANATEE COUNTY PUBLIC WORKS DEPARTMENT			RESTRAINED LENGTHS FOR DIP	UG—9 PAGE 109
REV.BY	DATE	<div>MAY 10, 2011</div> <div>DATE OF APPROVAL</div>		
CLB/BR	11/10			

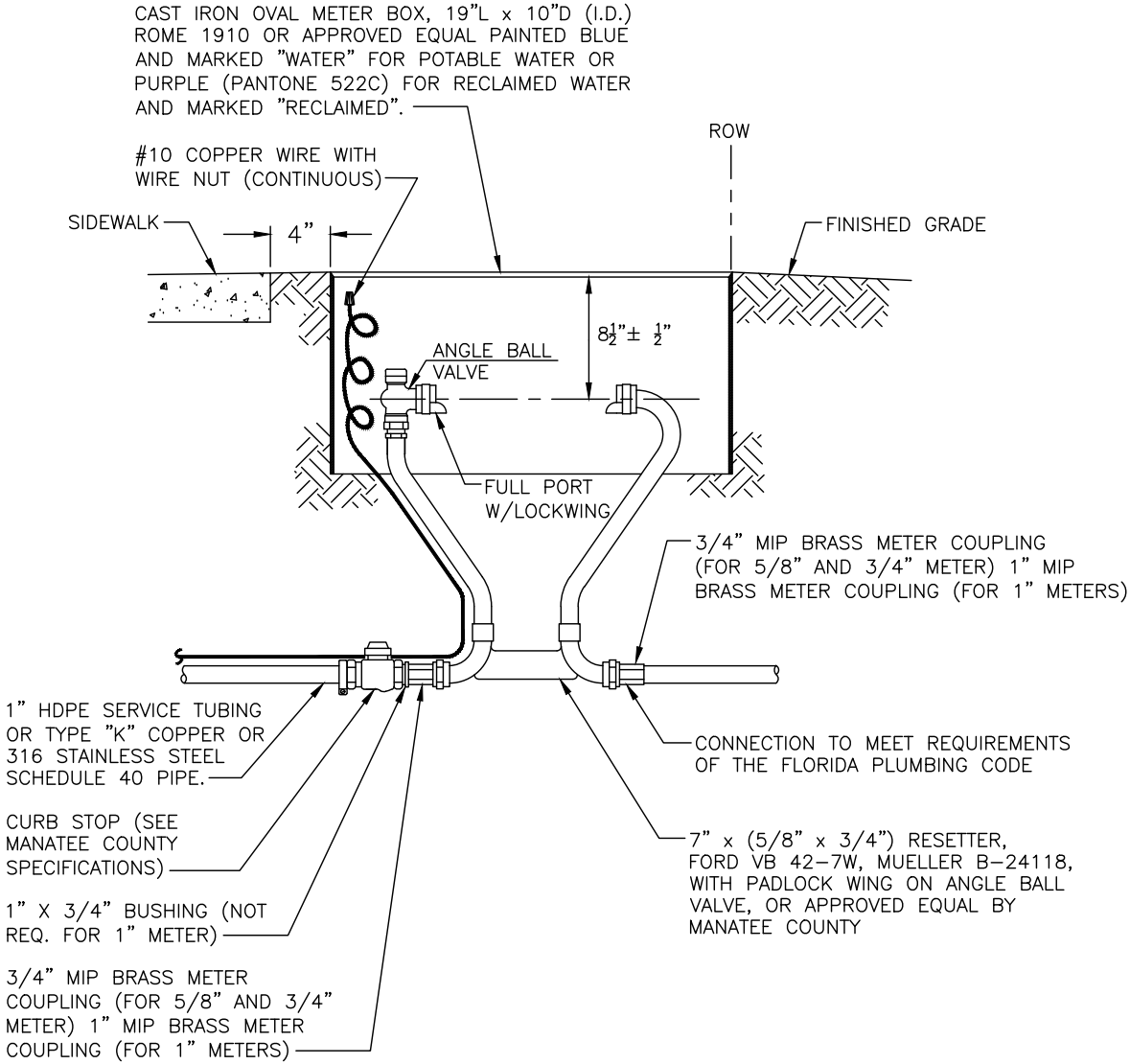
REVISIONS				CHRISTOPHER K. MARTIN,P.E. P.E. LICENSE NUMBER 66598 AYRES ASSOCIATES 8875 HIDDEN RIVER PKWY, #200 TAMPA, FL 33637 CERTIFICATE OF AUTHORIZATION 4356	MANATEE COUNTY PUBLIC UTILITIES DEPARTMENT			TYPICAL DETAILS	SHEET NO.
DATE	DESCRIPTION		DATE		ROAD NO.	COUNTY	FINANCIAL PROJECT ID		
----	----				SR 684	MANATEE	436551-2-52-01		17



NOTES:

- 1. BACKFLOW DEVICE MUST BE INSTALLED IMMEDIATELY DOWNSTREAM OF METER, AS SHOWN ABOVE
- 2. COPPER PIPE TYPE "K" OR BRASS PIPE MINIMUM SCHEDULE 40 SHALL BE USED TO A MINIMUM DEPTH OF 12" BELOW GRADE.
- 3. PIPES PASSING THROUGH OR ENCASED IN CONCRETE MUST BE PROPERLY PROTECTED AND SLEEVED.
- 4. THE SYSTEM MUST MEET ALL REQUIREMENTS OF THE FLORIDA PLUMBING CODE (LATEST EDITION) AND THE MANATEE COUNTY BACKFLOW PREVENTION ORDINANCE (LATEST EDITION).
- 5. ALL EXPOSED EDGES OF CONCRETE SHALL BE CHAMFERED 1/2".
- 6. BACKFLOW PREVENTER SHALL BE TESTED AT THE TIME OF INSTALLATION.
- 7. PRESSURE REDUCING VALVE REQUIRED UPSTREAM OF BACKFLOW IF SYSTEM PRESSURE EXCEEDS 80 PSI.
- 8. 3' MINIMUM CLEARANCE FROM LANDSCAPING PLANTS TO EDGE OF CONCRETE SLAB AND CLEAR OPENING FOR ACCESS FROM STREET.
- 9. IN ADDITION TO THE PRV, THE BUILDING DEPT. MAY REQUIRE AN APPROVED DEVICE FOR THERMAL EXPANSION CONTROL.
- 10. REFER TO DETAIL WATER METER & BACKFLOW PREVENTER FOR LIFT STATIONS FOR WATER SERVICE AT SEWAGE PUMPING STATION.

MANATEE COUNTY PUBLIC WORKS DEPARTMENT			3/4" & 1" BACKFLOW PREVENTER	UW-12 PAGE 130
REV.BY	DATE	<div>MAY 10, 2011</div> <div>DATE OF APPROVAL</div>		
CLB/BR	11/10			

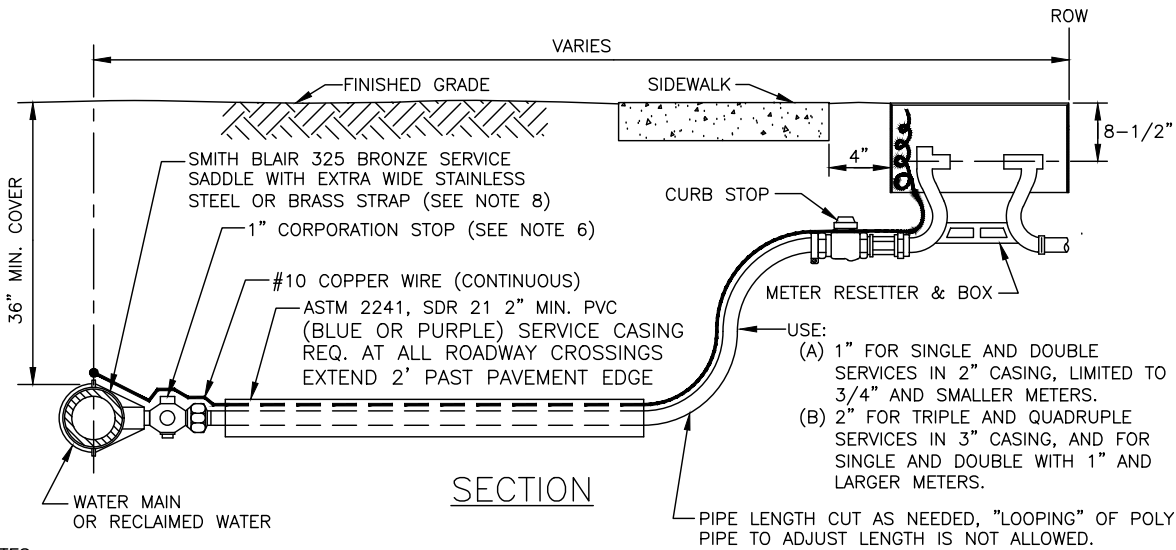
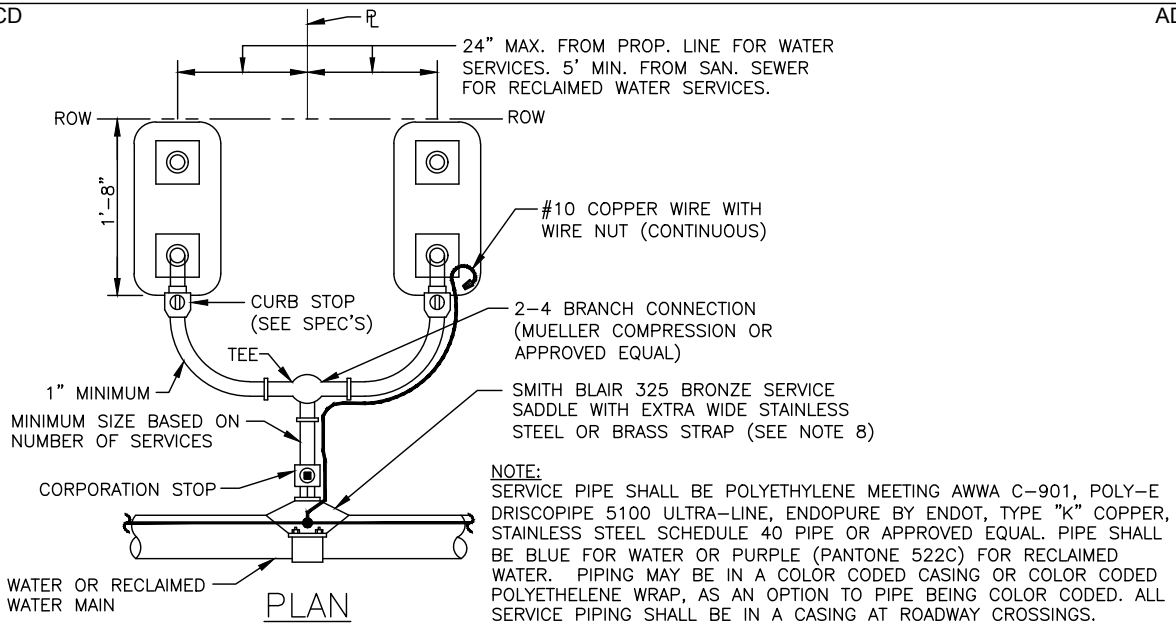


NOTES:

- 1. FORD 40 SERIES RESETTERS VB43 AND VB44 OR EQUAL FOR 3/4" OR 1" METERS ALSO ALLOWED.
- 2. METER BOX AND RESETTER ARE TO BE INSTALLED BY THE INFRASTRUCTURE CONTRACTOR AND SHALL NOT BE SET IN DRAINAGE SWALES, SIDEWALKS OR DRIVEWAYS.
- 3. FOR COMPLETE SERVICE CONNECTION ASSEMBLY, SEE DETAIL TYPICAL SERVICE CONNECTION.
- 4. WHEN THE DISTANCE BETWEEN THE EDGE OF THE SIDEWALK AND THE R/W IS ONE FOOT (CUL-DE-SAC W/ MEDIAN) A 10-FOOT-WIDE PUBLIC UTILITY EASEMENT SHALL BE LOCATED IN THE FRONT OF THE LOTS, ADJACENT TO THE ROW.
- 5. 3' MINIMUM CLEARANCE FROM LANDSCAPING PLANTS TO EDGE OF METER, CLEAR ACCESS OPENING TO STREET.

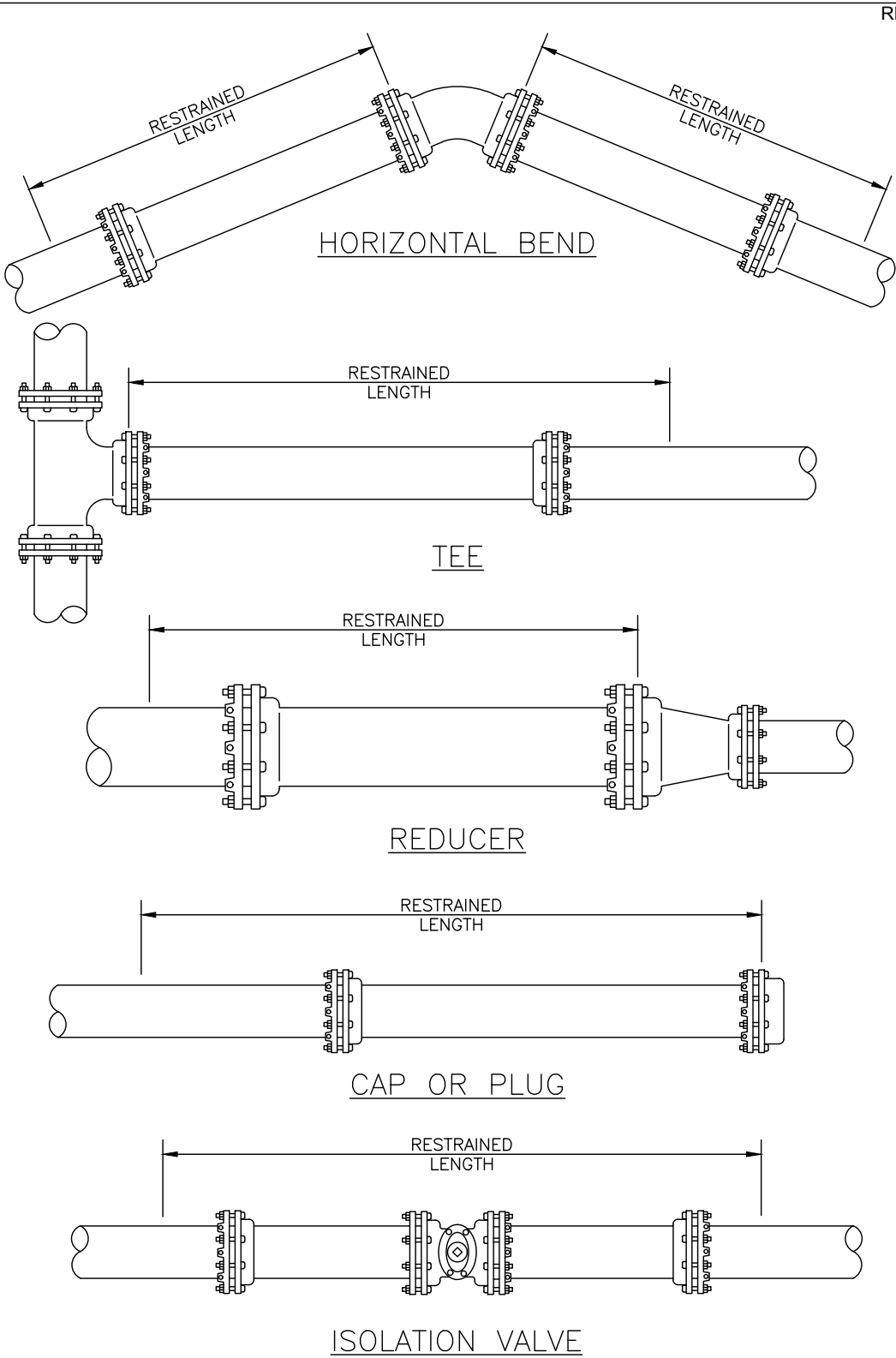
MANATEE COUNTY PUBLIC WORKS DEPARTMENT			METER BOX ASSEMBLY FOR 5/8" X 3/4", 3/4" & 1" METERS	UW—17 PAGE 135
REV.BY	DATE	<div>MAY 10, 2011</div> <div>DATE OF APPROVAL</div>		
CLB/BR	11/10			

REVISIONS				CHRISTOPHER K. MARTIN, P.E. P.E. LICENSE NUMBER 66598 AYRES ASSOCIATES 8875 HIDDEN RIVER PKWY, #200 TAMPA, FL 33637 CERTIFICATE OF AUTHORIZATION 4356	MANATEE COUNTY PUBLIC UTILITIES DEPARTMENT			TYPICAL DETAILS	SHEET NO. 18
DATE	DESCRIPTION	DATE	DESCRIPTION		ROAD NO.	COUNTY	FINANCIAL PROJECT ID		
----	----				SR 684	MANATEE	436551-2-52-01		



- NOTES:
1. ALL SERVICE TAPS TO BE LOCATED IN THE FIELD. TAPS SHALL BE NO CLOSER THAN 2'-0" STAGGERED INTERVALS OR WITHIN 2'-0" FROM BELL OR SPIGOT ENDS.
 2. METER BOXES & RESETTERS ARE TO BE INSTALLED BY THE INFRASTRUCTURE CONTRACTOR AND SHALL NOT BE SET IN DRAINAGE SWALES, SIDEWALKS OR DRIVEWAYS.
 3. "WM" OR "RWM" TO BE IMPRESSED INTO THE NEWLY POURED CONCRETE CURB ALONG WITH DISTANCE IN FEET TO THE METER. IF NO CURB, INSTALL A BLUE DISC WITH "WM" OR A PURPLE DISC WITH "RWM" AND A 1/8"x 1" GALVANIZED STEEL SCREW IN THE EDGE OF PAVEMENT WITH THE DISTANCE (IN FEET) FROM THE DISC TO THE METER.
 4. #10 COPPER WIRE SHALL BE INSTALLED WITH WATER AND RECLAIMED MAIN AND ALL SERVICES. SERVICE WIRE SHALL BE CONNECTED TO THE TRACER WIRE ALONG THE MAIN.
 5. WATER AND RECLAIMED WATER SERVICE LINES TO BE 5' MINIMUM FROM SEWER SERVICE PIPES.
 6. FOR 2" SERVICES REPLACE CORPORATION STOP WITH 2" RESILIENT WEDGE FIP GATE VALVE W/BOX, LID & TAG.
 7. WHEN THE DISTANCE BETWEEN THE EDGE OF THE SIDEWALK AND THE ROW IS ONE FOOT (CUL-DE-SAC W/MEDIAN) A 10-FOOT-WIDE PUBLIC UTILITY EASEMENT SHALL BE LOCATED IN THE FRONT OF THE LOTS, ADJACENT TO THE ROW.
 8. FOR HDPE MAINS, USE ROMAC 306H SS OR CENTRAL PLASTICS ELECTRO FUSION CORP SADDLE.

MANATEE COUNTY PUBLIC WORKS DEPARTMENT		TYPICAL SERVICE CONNECTION	UW-19
REV.BY	DATE		
CLB/BR	11/10		
	MAY 10, 2011		
	DATE OF APPROVAL		PAGE 137

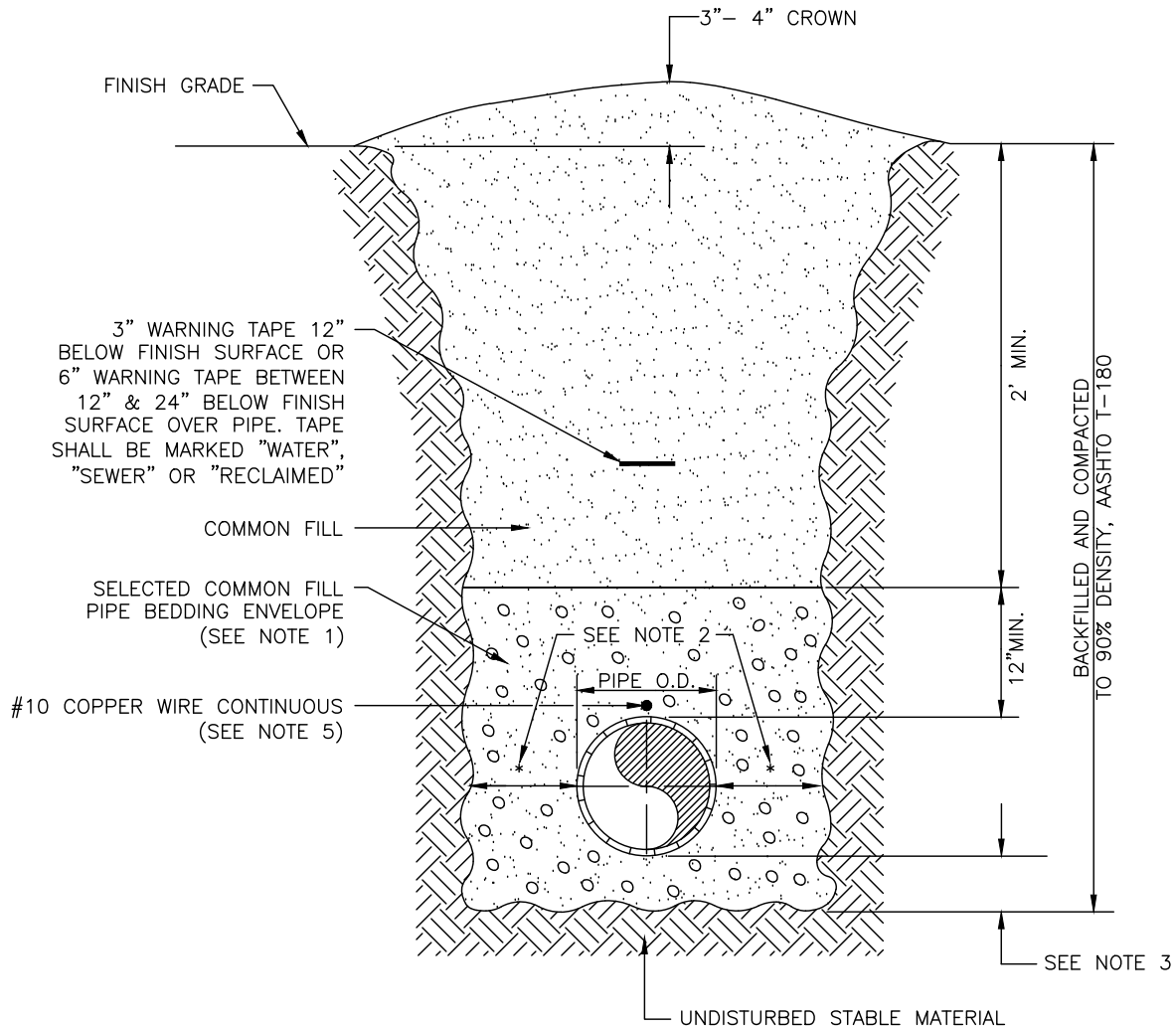


MANATEE COUNTY PUBLIC WORKS DEPARTMENT		RESTRAINED LENGTHS FOR PIPE	UG-10
REV.BY	DATE		
CLB/BR	11/10		
	MAY 10, 2011		
	DATE OF APPROVAL		PAGE 110

REVISIONS				CHRISTOPHER K. MARTIN, P.E. P.E. LICENSE NUMBER 66598 AYRES ASSOCIATES 8875 HIDDEN RIVER PKWY, #200 TAMPA, FL 33637 CERTIFICATE OF AUTHORIZATION 4356	MANATEE COUNTY PUBLIC UTILITIES DEPARTMENT			TYPICAL DETAILS	SHEET NO. 19
DATE	DESCRIPTION	DATE	DESCRIPTION		ROAD NO.	COUNTY	FINANCIAL PROJECT ID		
---	---	---	---		SR 684	MANATEE	436551-2-52-01		

NOTES:

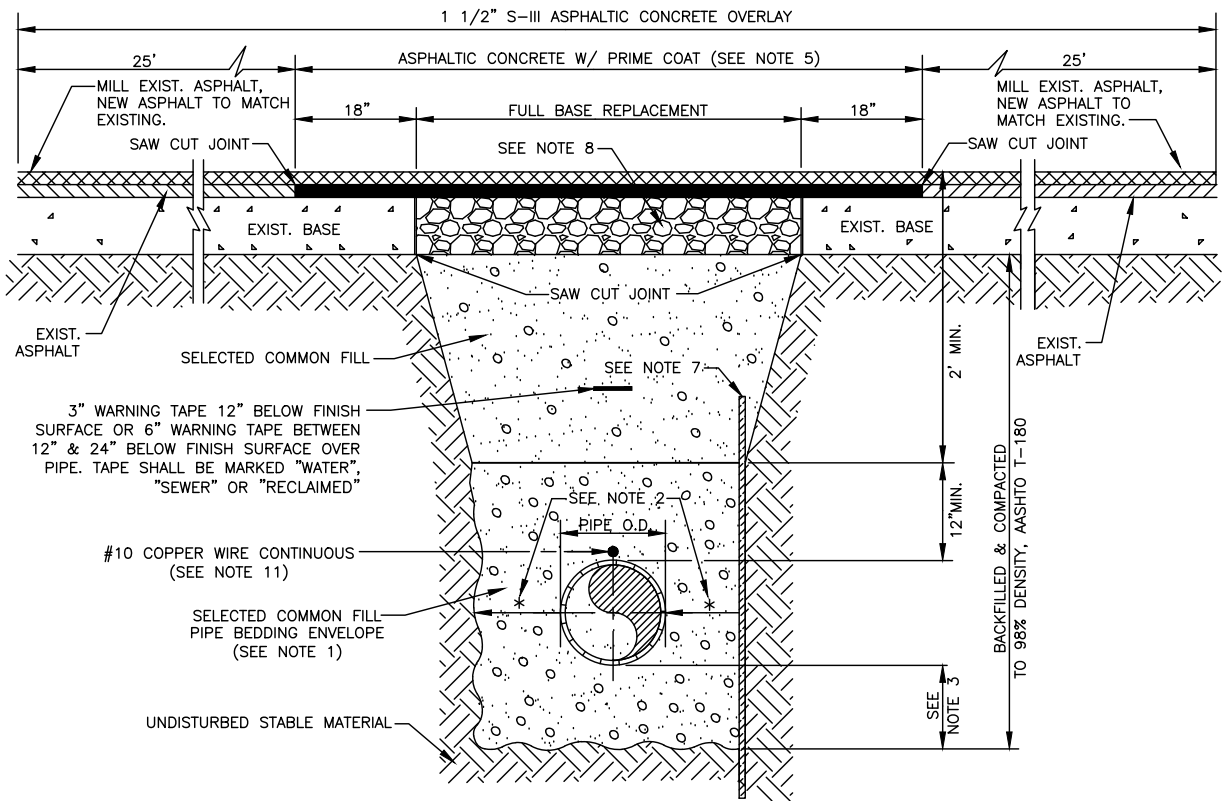
- 1. USE OF TYPE A-2 AND A-3 PIPE BEDDING TO BE DETERMINED IN THE FIELD BY THE ENGINEER.
- 2. PROVIDE ADEQUATE CLEARANCE TO PLACE AND COMPACT STAGE 1 BEDDING MATERIAL IN TRENCH AREA BELOW PIPE SPRINGLINE. PIPE EMBEDMENT MUST BE COMPACTED OUT TO THE TRENCH WALL OR 2.5 TIMES THE PIPE OD, WHICHEVER IS LESS.
- 3. TYPICALLY 4" TO 6".
- 4. PIPE INSTALLATION SHALL BE IN ACCORDANCE WITH THE MANUFACTURER'S WRITTEN INSTRUCTIONS.
- 5. TRACER WIRE NOT REQUIRED FOR GRAVITY SEWERS.



MANATEE COUNTY PUBLIC WORKS DEPARTMENT			TRENCH WITH UNIMPROVED SURFACE TYPE A-1 PIPE BEDDING	UG-11
REV.BY	DATE			
WRT/KE	03/11			
		MAY 10, 2011		
		DATE OF APPROVAL		PAGE 111

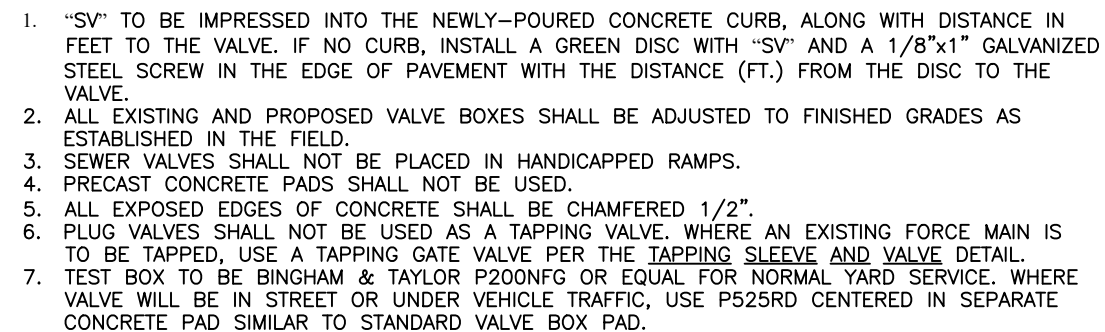
NOTES:

- 1. USE OF TYPE A-2 AND A-3 PIPE BEDDING TO BE DETERMINED IN THE FIELD BY THE ENGINEER.
- 2. PROVIDE ADEQUATE CLEARANCE TO PLACE AND COMPACT STAGE 1 BEDDING MATERIAL IN TRENCH AREA BELOW PIPE SPRINGLINE. PIPE EMBEDMENT MUST BE COMPACTED OUT TO THE TRENCH WALL OR 2.5 TIMES THE PIPE OD, WHICHEVER IS LESS.
- 3. TYPICALLY 4" TO 6".
- 4. PIPE INSTALLATION SHALL BE IN ACCORDANCE WITH THE MANUFACTURER'S WRITTEN INSTRUCTIONS.
- 5. ASPHALTIC CONCRETE STRUCTURE COURSE WITH PRIME COAT SHALL BE THE SAME DEPTH AND TYPE AS EXISTING OR A MINIMUM OF 1 1/4 INCH, WHICHEVER IS GREATER.
- 6. MILL 25' BACK FROM TRENCH SAW CUT. ADJUST MILLING PER INDIVIDUAL SITE TO NOT IMPACT BASE. BUTT JOINT TO EXIST ASPHALT. FINAL OVERLAY LIMITS ARE FROM EDGE OF PAVEMENT TO EDGE OF PAVEMENT. FINAL OVERLAY TO MATCH EXISTING WITH NO DISCERNABLE "BUMP" AT JOINT. MILLING LIMITS THAT IMPACT INTERSECTION SHALL BE ADDRESSED ON A CASE BY CASE BASIS AND APPROVED BY MANATEE COUNTY.
- 7. SHEETING ORDERED LEFT IN PLACE TO BE CUT OFF 24" BELOW FINISHED GRADE OR 12" BELOW SUBGRADE.
- 8. BASE SHALL BE 8" MINIMUM THICKNESS CRUSHED CONCRETE.
- 9. TEMPORARY PATCHES WILL BE INSTALLED TO PROVIDE A SMOOTH ALL WEATHER SURFACE AT ALL TIMES. PERMANENT REPLACEMENT TO BE MADE AS SOON AS POSSIBLE.
- 10. RESTORE SIGNAGE & MARKING WITH THERMOPLASTIC PER FDOT STANDARDS, LATEST EDITION.
- 11. TRACER WIRE NOT REQUIRED FOR GRAVITY SEWERS.
- 12. NOTES 5. THRU 10. ARE MINIMUM REQUIREMENTS FOR A TRENCH IN A ROAD. REFER TO LATEST EDITION OF MANATEE COUNTY HIGHWAY AND TRAFFIC STANDARDS FOR ADDITIONAL REQUIREMENTS.



MANATEE COUNTY PUBLIC WORKS DEPARTMENT			TRENCH WITH ASPHALT PAVEMENT SURFACE TYPE A-1 PIPE BEDDING	UG-12
REV.BY	DATE			
WRT/KE	03/11			
		MAY 10, 2011		
		DATE OF APPROVAL		PAGE 112

REVISIONS				CHRISTOPHER K. MARTIN, P.E. P.E. LICENSE NUMBER 66598 AYRES ASSOCIATES 8875 HIDDEN RIVER PKWY, #200 TAMPA, FL 33637 CERTIFICATE OF AUTHORIZATION 4356	MANATEE COUNTY PUBLIC UTILITIES DEPARTMENT			SHEET NO.
DATE	DESCRIPTION	DATE	DESCRIPTION		ROAD NO.	COUNTY	FINANCIAL PROJECT ID	
----	----				SR 684	MANATEE	436551-2-52-01	20



USF 170-CE RING & COVER (ASTM A-48) OR APPROVED EQUAL. COVER TO BE MARKED "MANATEE COUNTY SANITARY SEWER & YEAR" OMIT "MANATEE" COUNTY IF PRIVATELY MAINTAINED.

RIM ELEVATION INDICATED ON PLAN

FRW RAIN WATER PROTECTOR WITH GASKET OR APPROVED EQUAL BY MANATEE COUNTY.

2"

FINISH GRADE

1'-6" MAX.

PRE-CAST CONCRETE RINGS SET IN NON-SHRINK MORTAR.

2'-0"

ENCASE RIBS IN CEMENT MORTAR COLLAR ALL AROUND

PRE-CAST M.H. SHALL CONFORM TO ASTM C-478 LATEST REV, TYPE II CONCRETE, 4,000 P.S.I. 28 DAY COMPRESSIVE STRENGTH

TONGUE & GROOVE JOINT WITH RING GASKET. ALL JOINTS SHALL MEET THE REQUIREMENTS FOR CONCRETE SEWER AND CULVERT PIPE USING RUBBER GASKETS (ASTM C-443)

FOR JOINTS USING RUBBER GASKETS, APPLY AN ADDITIONAL SEALING DEVICE, SUCH AS RUB'R-NEK JOINT WRAP OR EQUAL, OR ADEKA ULTRA SEAL P-201 OR EQUAL. P-201 TYPE SEALANT TO BE APPLIED TO THE INTERIOR OF JOINT BEFORE MANHOLE SECTION ASSEMBLY.

8" MIN.

4'-0" DIA. (8"-16" PIPE)

5'-0" DIA. (LARGER THAN 16")

8" MIN.

RUBBER RING

ADEKA SEAL

RUB'R NEK WRAP

LIFT HOLES OR INSERTS SHALL NOT PENETRATE MANHOLE WALL

CHANNEL FLOW DETAILS

A B C

D E

135° OR GREATER

PIPES 16" AND ABOVE SEE STANDARD SPECIFICATIONS FOR BENCH AND INVERT

6"

8"

6" MIN. BEDDING

12" MIN.

ALL PIPE OPENINGS SHALL HAVE RESILIENT PIPE TO MANHOLE SEALS PER ASTM C-923, XP BY A-LOK OR APPROVED EQUAL BY MANATEE COUNTY.

NOTE:

#4 @ 9"C.C. EACH WAY CENTERED

Duarte, Alvaro 8/9/2019 9:38:23 AM J:\66-0172.03 - Manatee County - Cortez FM Relocation\Drawings\66-0172.03 Typical Details.dwg