

MANATEE COUNTY

June 16, 2010

All Interested Bidders:

SUBJECT: Invitation for Bid (IFB #10-2061-OV)
Clearview Manor / Waterline Improvements
Bradenton, Manatee County, FL
Project No. 6072370 6.2

ADDENDUM #1

Bidders are hereby notified that this Addendum shall be acknowledged on page 00300-1 of the Bid Form and made a part of the above named bidding and contract documents. Bids submitted without acknowledgement of the Addendum will be considered incomplete.

The following items are issued to add to, modify, and clarify the bid and contract documents. These items shall have the same force and effect as the original bidding and contract documents, and cost involved shall be included in the bid prices. Bids to be submitted on the specified bid date, shall conform to the additions and revisions listed herein.

Bidders Note: The deadline for clarification requests is **June 24, 2010 at 5:00 PM.** Questions received after the date shall not be considered.

Attachments:

- Malcolm Pirnie Memorandum dated June 16, 2010 responding to questions received at the Pre-Bid / Information Conference held on June 10, 2010. (5 Total Pages)
- Malcolm Pirnie Memorandum dated June 16, 2010, providing the "Construction Cost Estimate". (1 Total Page)

Bidders: It is important to note that Manatee County Government is currently receiving competitive bids which are up to 50% lower than the Engineers' Estimate.

Financial Management Department – Purchasing Division
1112 Manatee Avenue West, Suite 803, Bradenton, FL 34205
Phone: 941-708-7527 – Fax: 941-708-7544

LARRY BUSTLE * DR. GWENDOLYN Y. BROWN * JOHN R. CHAPPIE * RON GETMAN * DONNA G. HAYES * CAROL WHITMORE * JOE MCCLASH

District 1

District 2

District 3

District 4

District 5

District 6

District 7

June 16, 2010
Invitation for Bid (IFB #10-2061-OV)
Clearview Manor / Waterline Improvements
Bradenton, Manatee County, FL
Project No. 6072370 6.2
Addendum #1

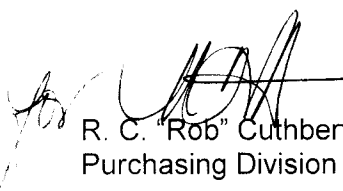
- Revised Bid Form(s) – Pages 00300-2 through 00300-5 (Bid A and Bid B).
(4 Total Pages)
- Section 01150 Measurement and Payment. (11 Total Pages)
- Plans / Drawings C-1, C-4, C-5, C-9, C-10, C-11, C-12 and CD-7.
(8 Total Pages / via PDF)

If you have submitted a bid prior to receiving this addendum, you may request in writing that your original, sealed bid be returned to your firm. All sealed bids received will be opened on the date stated.

END OF ADDENDUM #1

Bids will be received at the **Manatee County Purchasing Division, 1112 Manatee Avenue West, Suite 803, Bradenton, FL 34205** until **2:00 P.M. on July 8, 2010**

Sincerely,



R. C. "Rob" Cuthbert, CPM, CPPO
Purchasing Division Manager

Ov
Attachments – 21 Total Pages and 8 Total Plans / Drawings via PDF)

**Manatee County
Clearview Manor Water Line Improvements
Project No. 6072370**

ADDENDUM No. 1

June 16, 2010

The following items represent clarifications, additions, deletions, and/or modifications to the Contract Documents for the above-referenced project. This Addendum shall hereafter be regarded as part of the Contract Documents. Items not referenced herein remain unchanged. Receipt of this Addendum shall be acknowledged below and on the Bid Form.

This addendum consists of:

- Five (5) cover pages
- Engineer's Estimate of Construction Cost
- Bid Form, pages 00300-2 through 00300-5
- Section 01150, Measurement and Payment
- Drawings C-1, C-4, C-5, C-9, C-10, C-11, C-12 and CD-7.

In addition to clarification to written requests for information, these items replace original items previously issued or are to be added to the Bidding and Construction Documents as indicated.

PART I – PERTAINING TO THE SPECIFICATIONS

FRONT END

1. Section 00300 – Bid Form
 - a. Remove pages 00300-2 through 00300-5 in their entirety and replace with the attached pages 00300-2 through 00300-5.

CONTRACT DOCUMENTS

1. Section 00410-2 Bid Form
 - a. Remove this page from the document.
2. Section 01150, Measurement and Payment
 - a. Remove this section in its entirety and replace with the attached Section 01150.

PART II – PERTAINING TO THE DRAWINGS

GENERAL

1. Drawing G-5, Note No. 2. Replace the note in its entirety with the following text.
“Contractor shall disconnect the existing water meters from all existing water meter services to each residence located at the rear of the private property, and relocate and install the existing water meters in the front roadway right-of-way.”
2. Drawing G-6, Note No. 2. Replace the note in its entirety with the following text.
“Contractor shall disconnect the existing water meters from all existing water meter services to each residence located at the rear of the private property, and relocate and install the existing water meters in the front roadway right-of-way.”

CIVIL

1. Drawing C-1, delete this drawing sheet and replace it with the attached drawing C-1, Revision 1. Changed diameter of directional drill from 10-inch to 8-inch diameter; changed valve and fitting sizes from 8-inch to 6-inch; added 8” by 6” reducer.
2. Drawing C-4, delete this drawing sheet and replace it with the attached drawing C-4, Revision 1. Changed diameter of directional drill from 10-inch to 8-inch diameter.
3. Drawing C-5, delete this drawing sheet and replace it with the attached drawing C-5, Revision 1. Changed diameter of directional drill from 10-inch to 8-inch diameter.
4. Drawing C-9, delete this drawing sheet and replace it with the attached drawing C-9, Revision 1. Changed 8-inch gate valve to 6-inch; revised note from transitional coupling to fire hydrant; eliminated 8” by 6” reducer.

5. Drawing C-10, delete this drawing sheet and replace it with the attached drawing C-10, Revision 1. Relocated fire hydrant assembly.
6. Drawing C-11, delete this drawing sheet and replace it with the attached drawing C-11, Revision 1. Added 6" by 2" reducer.
7. Drawing C-12, delete this drawing sheet and replace it with the attached drawing C-12, Revision 1. Added 6" by 2" reducer.
8. Drawing CD-7, delete this drawing sheet and replace with the attached drawing CD-7, Revision 1. A detail for UW-12 ¾" & 1" Backflow Preventer, detail UW-13 1 ½" & 2" Meter and Backflow Preventer, and a new transitional coupling (for DIP to HDPE) have been added.

PART III – CLARIFICATIONS TO BIDDERS QUESTIONS

1. **Question:** Specifications Section 01030, par. 1.04, sub. par. A, this paragraph needs to be revised or removed from the specifications, if the utility is not shown on the drawings how are we to provide costs to relocate it in our bid.
Response: Delete the third sentence in this paragraph.
2. **Question:** Specifications Section 01030 – Special Project Procedures, par. 1.04, sub. par. D, this paragraph needs to be revised or removed from the specifications.
Response: Delete the third sentence in this paragraph.
3. **Question:** Specifications Section 01590 – Engineer's Field Office - why do we need an office for the engineer on this job?
Response: Delete this section from the specifications in its entirety.
4. **Question:** Plan sheet G-2, General Note No. 35 – consider removal this note from the drawings
Response: Delete this note from the drawing sheet.
5. **Question:** Plan sheet G-3, General Note No. 6, the last sentence - the specifications are not requiring the lines to be pigged. Please remove this requirement from the drawings.

Response: Delete this note from the drawing sheet.

6. **Question:** Plan sheet G-3, General Note No. 10 - this note instructs us to install an air release valve at all high points even if not shown on the drawings. This will require installing an air release valve at each end of each directional drill as high points will occur when utilizing the directional drilled installation method. The bid quantity for air release valves needs to be changed to consider the additional high points contributed to by utilizing the directional drilled method. Please clarify.

Response: The directional drilling installations shall be maintained at the same depth of cover as the proposed segments of open cut construction of the water main to avoid the requirement for additional air release valve at contractor generated high points. In the event that a high point is generated by the Contractor, the Contractor shall be responsible to comply with general note no. 10 on drawing sheet G-3.

7. **Question:** Plan sheet G-5, Note No.2 - is the Contractor going to be issued a new meter from the County upon returning the old meter? Who is going to furnish the new meters? The Measurement and Payment section tells us we are to furnish a new meter box but does not speak to the disposition of who furnishes a new meter. Please clarify.

Response: The Note No. 2 on Sheet G-5 and G-6 has been changed as part of this addendum. See revised text for note above in Part II, General.

8. **Question:** How will the Contractor be exempt from any liability with the homeowners when working on their private property?

Response: The County will gain permission for property access by the Contractor from the individual property owners. The Contractor's liability on private property remains the same as the work performed within the public right-of-way.

9. **Question:** Are the long side water services, the ones that cross the roadway, to be installed by directional drill?

Response: Yes; see the references in the revised text provided in this addendum in Section 01150 – Measurement and Payment.

10. **Question:** Why are we installing water mains by directional drill method?

Response: This is a typical industry and County installation method that minimizes the disruptions and inconveniences to customers by avoiding open cutting construction

techniques of the right-of-ways adjacent to private property, and eliminates open cutting of driveways

11. Question: Are "mole systems" (as manufactured by Hudco Piercing Tools provided by a contractor in the form of a website subsequent to the pre-bid conference) acceptable for use by the County in lieu of directional drilling for the long water services?

Response: The County has not previously used this technology. Bidders must submit bids based on the Bid Package and this Addendum No. 1. If the contractor awarded this work wishes to propose using this technology, the County may consider after review of appropriate shop drawings.

Thank you,

A handwritten signature in black ink that reads "Victor A. Hurlburt". The signature is written in a cursive, flowing style.

Victor A. Hurlburt, P.E.
Project Manager
Malcolm Pirnie, Inc.

June 16, 2010

Re: Manatee County
Clearview Manor Waterline Improvements

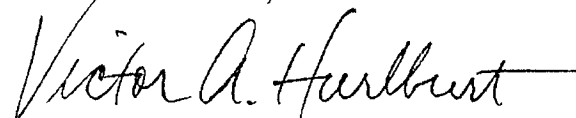
To All Bidders:

The "Engineer's Estimate of probable Construction Cost" (EOPCC) for the waterline improvements at Clearview Manor is \$1,220,122.00 (one million, two hundred twenty thousand, one hundred and twenty-two dollars and zero cents).

The EOPCC is based on the original specifications and drawings issued on June 16, 2010 and the clarifications provided in Addendum No. 1. Changes to the specifications and drawings subsequent to Addendum No. 1 may not be accounted for in this EOPCC.

Very truly yours,

MALCOLM PIRNIE, INC.

A handwritten signature in black ink that reads "Victor A. Hurlburt". The signature is written in a cursive style with a long horizontal stroke at the end.

Victor A. Hurlburt, P.E.

Project Manager

Engineer of Record for

Clearview Manor Waterline Improvements

BID FORM
(Submit in Triplicate)
SECTION 00300 (Addendum #1 - 6/16/2010)

BID "A"

IFB #10-2061-OV Clearview Manor / Waterline Improvements
Bradenton, Manatee County, FL (Project No. 6072370 6.2)
(Bid "A" Base on a Completion Time of 330 calendar days)

ITEM NO.	DESCRIPTION	U/M	QTY.	UNIT PRICE	EXTENDED PRICE
1.0	Mobilization (Not to Exceed 10% of the Total Bid)	LS	1	\$	\$
2.0	Miscellaneous Work and Cleanup	LS	1	\$	\$
3.0	2-Inch HDPE Water Line - Open Cut (Addendum #1)	LF	189	\$	\$
4.0	6-Inch DIP Water Line - Open Cut (Addendum #1)	LF	1,279	\$	\$
5.0	8-Inch DIP Water Lines - Open Cut (Addendum #1)	LF	753	\$	\$
6.0	Directional Drill 2-Inch DR 9 HDPE Carrier Pipe (Addendum #1)	LF	368	\$	\$
7.0	Directional Drill 8-Inch DIPS DR 11 HDPE Carrier Pipe (Addendum #1)	LF	5,680	\$	\$
8.0	Directional Drill 10-Inch DIPS DR 11 HDPE Carrier Pipe (Addendum #1)	LF	1,997	\$	\$
9.0	8-Inch Gate Valves (Addendum #1)	EA	16	\$	\$
10.0	6-Inch Gate Valves (Addendum #1)	EA	28	\$	\$
11.0	4-Inch Gate Valves (Addendum #1)	EA	1	\$	\$
12.0	Air Release Assembly (Addendum #1)	EA	7	\$	\$
13.0	Hydrant Assembly (Addendum #1)	EA	22	\$	\$
14.0	Long Double Service Connection (Addendum #1)	EA	47	\$	\$
15.0	Long Single Service Connection (Addendum #1)	EA	5	\$	\$
16.0	Short Double Service Connection (Addendum #1)	EA	37	\$	\$

Bidder: _____

Authorized
Signature: _____

Bid "A"
Addendum #1

00300- 2

BID FORM
(Submit in Triplicate)
SECTION 00300 (Addendum #1 - 6/16/2010)

BID "A"

IFB #10-2061-OV Clearview Manor / Waterline Improvements
Bradenton, Manatee County, FL (Project No. 6072370 6.2)
(Bid "A" Base on a Completion Time of 330 calendar days)

ITEM NO.	DESCRIPTION	U/M	QTY.	UNIT PRICE	EXTENDED PRICE
17.0	Short Single Service Connection (Addendum #1)	EA	6	\$	\$
18.0	Relocation and Connection of Existing Water Service Meter & New Meter Box (Work Within Public Right-Of-Way) (Addendum #1)	EA	179	\$	\$
19.0A	Private Property Water Service Line Connection w/Backflow Assembly (Addendum #1)	EA	90	\$	\$
19.0B	Private Property Water Service Line Connection w/o Backflow Assembly (Addendum #1)	EA	89	\$	\$
20.0	Compact Ductile Iron Fittings (Addendum #1)	LBS	4,100	\$	\$
21.0	Sodding (Addendum #1)	SY	8,700	\$	\$
22.0	Pavement Repair and Road Restoration (Addendum #1)	SY	728	\$	\$
23.0	Sidewalk Replacement (Addendum #1)	SY	223	\$	\$
24.0	Driveway Restoration (Addendum #1)	SY	23	\$	\$
25.0	Preparation of As-Built Drawings (Addendum #1)	LS	1	\$	\$
26.0	Abandonment In-Place and Grouting of Existing Water Main (Addendum #1)	LS	1	\$	\$
27.0	DISCRETIONARY (Addendum #1)	LS	1		\$100,000.00
<p align="center">Bid "A" Clearview Manor / Waterline Improvements 10" Water Main Installation / Water Line Improvements (Based on 330 Calendar Completion Time)</p>					\$

Bidder: _____

Authorized
Signature: _____

Bid "A"
Addendum #1

00300- 3

BID FORM
(Submit in Triplicate)
SECTION 00300 (Addendum #1 - 6/16/2010)

BID "B"

IFB #10-2061-OV Clearview Manor / Waterline Improvements
Bradenton, Manatee County, FL (Project No. 6072370 6.2)
(Bid "B" Base on a Completion Time of 420 calendar days)

ITEM NO.	DESCRIPTION	U/M	QTY.	UNIT PRICE	EXTENDED PRICE
1.0	Mobilization (Not to Exceed 10% of the Total Bid)	LS	1	\$	\$
2.0	Miscellaneous Work and Cleanup	LS	1	\$	\$
3.0	2-Inch HDPE Water Line - Open Cut (Addendum #1)	LF	189	\$	\$
4.0	6-Inch DIP Water Line - Open Cut (Addendum #1)	LF	1,279	\$	\$
5.0	8-Inch DIP Water Lines - Open Cut (Addendum #1)	LF	753	\$	\$
6.0	Directional Drill 2-Inch DR 9 HDPE Carrier Pipe (Addendum #1)	LF	368	\$	\$
7.0	Directional Drill 8-Inch DIPS DR 11 HDPE Carrier Pipe (Addendum #1)	LF	5,680	\$	\$
8.0	Directional Drill 10-Inch DIPS DR 11 HDPE Carrier Pipe (Addendum #1)	LF	1,997	\$	\$
9.0	8-Inch Gate Valves (Addendum #1)	EA	16	\$	\$
10.0	6-Inch Gate Valves (Addendum #1)	EA	28	\$	\$
11.0	4-Inch Gate Valves (Addendum #1)	EA	1	\$	\$
12.0	Air Release Assembly (Addendum #1)	EA	7	\$	\$
13.0	Hydrant Assembly (Addendum #1)	EA	22	\$	\$
14.0	Long Double Service Connection (Addendum #1)	EA	47	\$	\$
15.0	Long Single Service Connection (Addendum #1)	EA	5	\$	\$
16.0	Short Double Service Connection (Addendum #1)	EA	37	\$	\$

Bidder: _____

Authorized
Signature: _____Bid "B"
Addendum #1

00300- 4

BID FORM

(Submit in Triplicate)

SECTION 00300 (Addendum #1 - 6/16/2010)**BID "B"****IFB #10-2061-OV Clearview Manor / Waterline Improvements****Bradenton, Manatee County, FL (Project No. 6072370 6.2)****(Bid "B" Base on a Completion Time of 420 calendar days)**

ITEM NO.	DESCRIPTION	U/M	QTY.	UNIT PRICE	EXTENDED PRICE
17.0	Short Single Service Connection (Addendum #1)	EA	6	\$	\$
18.0	Relocation and Connection of Existing Water Service Meter & New Meter Box (Work Within Public Right-Of-Way) (Addendum #1)	EA	179	\$	\$
19.0A	Private Property Water Service Line Connection w/Backflow Assembly (Addendum #1)	EA	90	\$	\$
19.0B	Private Property Water Service Line Connection w/o Backflow Assembly (Addendum #1)	EA	89	\$	\$
20.0	Compact Ductile Iron Fittings (Addendum #1)	LBS	4,100	\$	\$
21.0	Sodding (Addendum #1)	SY	8,700	\$	\$
22.0	Pavement Repair and Road Restoration (Addendum #1)	SY	728	\$	\$
23.0	Sidewalk Replacement (Addendum #1)	SY	223	\$	\$
24.0	Driveway Restoration (Addendum #1)	SY	23	\$	\$
25.0	Preparation of As-Built Drawings (Addendum #1)	LS	1	\$	\$
26.0	Abandonment In-Place and Grouting of Existing Water Main (Addendum #1)	LS	1	\$	\$
27.0	DISCRETIONARY (Addendum #1)	LS	1		\$100,000.00
Bid "B" Clearview Manor / Waterline Improvements 10" Water Main Installation / Water Line Improvements (Based on 420 Calendar Completion Time)					\$

Bidder: _____

Authorized
Signature: _____Bid "B"
Addendum #1

00300- 5

SECTION 01150

MEASUREMENT AND PAYMENT

PART 1 – GENERAL

1.01 SCOPE

- A. The scope of this section of the Contract Documents is to further define the items included in each Bid Item in the Bid Form section of the Contract Documents. Payment will be made based on the specified items included in the description in this section for each bid item.
- B. All contract prices included in the Bid Form section will be full compensation for all shop drawings, working drawings, labor, materials, tools, equipment and incidentals necessary to complete the construction as shown on the Drawings and/or as specified in the Contract Documents to be performed under this Contract. Actual quantities of each item bid on a unit price basis will be determined upon completion of the construction in the manner set up for each item in this section of the Specifications. Payment for all items listed in the Bid Form will constitute full compensation for all work shown and/or specified to be performed under this Contract.

1.02 ESTIMATED QUANTITIES

- A. The quantities shown are approximate and are given only as a basis of calculation upon which the award of the Contract is to be made. The Owner/Engineer does not assume any responsibility for the final quantities, nor shall the Contractor claim misunderstanding because of such estimate of quantities. Final payment will be made only for satisfactorily completed quantity of each item.

1.03 WORK OUTSIDE AUTHORIZED LIMITS

- A. No payment will be made for work constructed outside the authorized limits of work.

1.04 MEASUREMENT STANDARDS

- A. Unless otherwise specified for the particular items involved, all measurements of distance shall be taken horizontally or vertically.

1.05 AREA MEASUREMENTS

- A. In the measurement of items to be paid for on the basis of area of finished

work, the lengths and/or widths to be used in the calculations shall be the final dimensions measured along the surface of the completed work within the neat lines shown or designated.

1.06 LUMP SUM ITEMS

- A. Where payment for items is shown to be paid for on a lump sum basis, no separate payment will be made for any item of work required to complete the lump sum items. Lump sum contracts shall be complete, tested and fully operable prior to request for final payment. Contractor may be required to provide a break-down of the lump sum totals.

1.07 UNIT PRICE ITEM

- A. Separate payment will be made for the items of work described herein and listed on the Bid Form. Any related work not specifically listed, but required for satisfactory completion of the work shall be considered to be included in the scope of the appropriate listed work items.
- B. No separate payment will be made for the following items and the cost of such work shall be included in the applicable pay items of work. Final payments shall not be requested by the Contractor or made by the Owner until as-built (record) drawings have been submitted and approved by the Engineer.
 - 1. Shop Drawings, Working Drawings.
 - 2. Clearing, grubbing and grading except as hereinafter specified.
 - 3. Trench excavation, including necessary pavement removal and rock removal, except as otherwise specified.
 - 4. Dewatering and disposal of surplus water.
 - 5. Structural fill, backfill, and grading.
 - 6. Replacement of unpaved roadways, and shrubbery plots.
 - 7. Cleanup and miscellaneous work.
 - 8. Foundation and borrow materials, except as hereinafter specified.
 - 9. Testing and placing system in operation.
 - 10. Any material and equipment required to be installed and utilized for the tests.
 - 11. Pipe, structures, pavement replacement, asphalt and shell driveways and/or appurtenances included within the limits of lump sum work, unless otherwise shown.
 - 12. Maintaining the existing quality of service during construction.
 - 13. Maintaining or detouring of traffic.
 - 14. Appurtenant work as required for a complete and operable system.
 - 15. Seeding and hydromulching.

1.08 BID ITEMS

BID ITEM NO. 1 - MOBILIZATION

Measurement and payment for this Bid Item shall include full compensation for the required 100 percent (100%) Performance Bond, 100 Percent (100%) Payment Bond, all required insurance for the project and the Contractor's mobilization and demobilization costs as shown in the Bid Form.

Payment for mobilization shall not exceed 10 percent (10%) of the total Contract cost.

BID ITEM NO. 2 - MISCELLANEOUS WORK AND CLEANUP

Payment for all work included under this Bid Item shall be made at the Contract lump sum price bid listed in the Bid Form and shall represent full compensation for all labor, materials and equipment required to perform all the work as shown on the Contract Drawings and specified herein and any other miscellaneous work not specifically included for payment under other Bid Items obviously necessary to complete the Contract. Partial payments will be based on the breakdown of the Bid Item in accordance with the Schedule of Values submitted by the Contractor and approved by the Engineer. Payment shall also include full compensation for project photographs, as-builts record drawings, project signs, traffic control, rubbish and spoil removal, repair, replacement or relocation of all signs, walls, private irrigation systems and related items and any and all other items required to complete the project in accordance with Contract Documents.

BID ITEM NO. 3 – 2-INCH DIAMETER HDPE WATER LINE – OPEN CUT

Payment for all work included in this Bid Item shall be made at the applicable Contract unit price bid per the schedule of prices for furnishing and installing the 2-inch diameter HDPE water main pipe as shown on the Contract Drawings and listed in the Bid Form. Measurement and Payment shall be made for the actual length of the listed diameter pipe installed and will represent full compensation for all labor, materials, maintenance of traffic, installation of tracer wire, excavation, including rock, dewatering, bedding, backfill, compaction, silt fencing, blow-off valves, sampling points, test pits, flowable fill, tree trimming, conflict resolution, thrust restraints, pressure testing and disinfection and equipment required to complete this Bid Item. Also includes connection to existing water lines. No additional compensation will be made for excavation below the bottom of the pipe, for rock removal or bedding and backfill materials, or for repair of any trench settlement.

BID ITEM NO. 4 – 6-INCH DIAMETER DIP WATER LINE – OPEN CUT

Payment for all work included in this Bid Item shall be made at the applicable

Contract unit price bid per the schedule of prices for furnishing and installing the 6-inch diameter DIP water main pipe as shown on the Contract Drawings and listed in the Bid Form. Measurement and Payment shall be made for the actual length of the listed diameter pipe installed and will represent full compensation for all labor, materials, maintenance of traffic, installation of tracer wire, excavation, including rock, dewatering, bedding, backfill, compaction, silt fencing, blow-off valves, sampling points, test pits, flowable fill, tree trimming, conflict resolution, thrust restraints, pressure testing and disinfection and equipment required to complete this Bid Item. Also includes connection to existing water lines. No additional compensation will be made for excavation below the bottom of the pipe, for rock removal or bedding and backfill materials, or for repair of any trench settlement.

BID ITEM NO. 5 - 8-INCH DIAMETER DIP WATER LINE – OPEN CUT

Payment for all work included in this Bid Item shall be made at the applicable Contract unit price bid per the schedule of prices for furnishing and installing the 8-inch diameter DIP water main pipe as shown on the Contract Drawings and listed in the Bid Form. Measurement and Payment shall be made for the actual length of the listed diameter pipe installed and will represent full compensation for all labor, materials, maintenance of traffic, installation of tracer wire, excavation, including rock, dewatering, bedding, backfill, compaction, silt fencing, blow off valves, sampling points, test pits, flowable fill, tree trimming, conflict resolution, thrust restraints, pressure testing and disinfection and equipment required to complete this Bid Item. Also includes connection to existing water lines. No additional compensation will be made for excavation below the bottom of the pipe, for rock removal or bedding and backfill materials, or for repair of any trench settlement

BID ITEM NO. 6 - DIRECTIONAL DRILL 2-INCH (IPS) DR9 HDPE CARRIER PIPE

The quantity to be paid for under this item will be based on actual horizontal distance in linear feet to directional drill 2-inch (IPS) DR9 HDPE carrier pipe and other necessary incidentals furnished and installed in accordance with the contract documents. The unit price per linear foot of pipe will be full compensation for furnishing all labor, equipment, materials, maintenance of traffic, installation of tracer wire, tools, including but not limited to directional drilling, pipe, excavation, backfill, compacting, cleaning, flushing, drainage and dewatering; site restoration; temporary sheeting; shoring and bracing; restraining DIP both ends of transition fittings, transition fittings, additional DIP or HDPE fittings to achieve desired alignment, protection of existing utilities and structures; and conformance to the requirements of Manatee County and Florida Department of Transportation's "Utility Accommodation Guide," as applicable.

BID ITEM NO. 7 - DIRECTIONAL DRILL 8-INCH (DIPS) DR11 HDPE CARRIER PIPE

The quantity to be paid for under this item will be based on actual horizontal distance in linear feet to directional drill 8-inch (DIPS) DR11 HDPE carrier pipe and other necessary incidentals furnished and installed in accordance with the contract documents. The unit price per linear foot of pipe will be full compensation for furnishing all labor, equipment, materials, maintenance of traffic, installation of tracer wire, tools, including but not limited to directional drilling, pipe, excavation, backfill, compacting, cleaning, flushing, drainage and dewatering; site restoration; temporary sheeting; shoring and bracing; restraining DIP both ends of transition fittings, transition fittings, additional DIP or HDPE fittings to achieve desired alignment, protection of existing utilities and structures; and conformance to the requirements of Manatee County and Florida Department of Transportation's "Utility Accommodation Guide," as applicable.

BID ITEM NO. 8 – DIRECTIONAL DRILL 10-INCH (DIPS) DR11 HDPE CASING PIPE

The quantity to be paid for under this item will be based on actual horizontal distance in linear feet to directional drill 10-inch DR11 (DIPS) HDPE carrier pipe and other necessary incidentals furnished and installed as shown and in accordance with the contract documents. The unit price per linear foot of pipe will be full compensation for furnishing all labor, equipment, materials, maintenance of traffic, installation of tracer wire, tools, including but not limited to directional drilling, pipe, excavation, backfill, compacting, cleaning, flushing, drainage and dewatering; site restoration; temporary sheeting; shoring and bracing; restraining DIP both ends of transition fittings, transition fittings, additional DIP or HDPE fittings to achieve desired alignment, protection of existing utilities and structures; and conformance to the requirements of Manatee County and Florida Department of Transportation's "Utility Accommodation Guide," as applicable.

BID ITEM NO. 9 - 8-INCH DIAMETER GATE VALVES

Payment for all work included in this Bid Item shall be made at the applicable Contract unit price bid per each valve for furnishing and installing the listed diameter valve, box, cover and concrete pad as shown on the Contract Drawings and listed on the Bid Form. Payment shall represent full compensation for all labor, material, excavation, including rock as necessary, bedding, backfill, compaction, testing and disinfection and equipment required to complete these Bid Items.

BID ITEM NO. 10 – 6-INCH DIAMETER GATE VALVES

Payment for all work included in this Bid Item shall be made at the applicable Contract unit price bid per each valve for furnishing and installing the listed diameter valve, box, cover and concrete pad as shown on the Contract Drawings and

listed on the Bid Form. Payment shall represent full compensation for all labor, material, excavation, including rock as necessary, bedding, backfill, compaction, testing and disinfection and equipment required to complete these Bid Items.

BID ITEM NO. 11 – 4-INCH DIAMETER GATE VALVES

Payment for all work included in this Bid Item shall be made at the applicable Contract unit price bid per each valve for furnishing and installing the listed diameter valve, box, cover and concrete pad as shown on the Contract Drawings and listed on the Bid Form. Payment shall represent full compensation for all labor, material, excavation, including rock as necessary, bedding, backfill, compaction, testing and disinfection and equipment required to complete these Bid Items.

BID ITEM NO. 12 – AIR RELEASE ASSEMBLY

Payment for all work included in this Bid Item shall be made at the applicable Contract unit price bid per each air release assembly for furnishing and installing the listed diameter air release valve, box cover, concrete pad as shown on the Contract Drawings and listed on the Bid Form. Payment shall represent full compensation for all labor, material, excavation, including rock as necessary, bedding, backfill, compaction, testing and disinfection and equipment required to complete these Bid Items.

BID ITEM NO. 13 - HYDRANT ASSEMBLY

Payment for all work included in this Bid Item shall be made at the applicable Contract unit price bid per each hydrant assembly, including hydrant lead, tee, gate valve, box cover, concrete pads, restraining rods and/or thrust blocks, as shown on the Contract Drawings and listed on the Bid Form. Payment shall represent full compensation for all labor, material, equipment, excavation, including rock, bedding, backfill, compaction, testing and disinfection required to complete this Bid Item.

BID ITEM NO. 14 – LONG DOUBLE WATER SERVICE CONNECTION

Payment for all work included in this Bid Item shall be made at the applicable Contract unit price bid for each service type for furnishing and installing the listed 1-1/2” double water service connections, long side, by directional drilling, as shown on the Contract Drawings and listed on the Bid Form. Payment shall represent full compensation for all labor, material, excavation, including rock, bedding, backfill, compaction, testing and disinfection and equipment for directional drilling with casing and carrier pipe required to complete these Bid Items.

BID ITEM NO. 15 – LONG SINGLE WATER SERVICE CONNECTION

Payment for all work included in this Bid Item shall be made at the applicable

Contract unit price bid for each service type for furnishing and installing the listed 1” single water service connections, long side, by directional drilling, as shown on the Contract Drawings and listed on the Bid Form. Payment shall represent full compensation for all labor, material, excavation, including rock, bedding, backfill, compaction, testing and disinfection and equipment for directional drilling with casing and carrier pipe required to complete these Bid Items.

BID ITEM NO. 16 – SHORT DOUBLE WATER SERVICE CONNECTION

Payment for all work included in this Bid Item shall be made at the applicable Contract unit price bid for each service type for furnishing and installing the listed 1-1/2” double water service connections, short side, as shown on the Contract Drawings and listed on the Bid Form. Payment shall represent full compensation for all labor, material, excavation, including rock, bedding, backfill, compaction, testing and disinfection and equipment required to complete these Bid Items.

BID ITEM NO. 17 – SHORT SINGLE WATER SERVICE CONNECTION

Payment for all work included in this Bid Item shall be made at the applicable Contract unit price bid for each service type for furnishing and installing the listed 1” single water service connections, short side, as shown on the Contract Drawings and listed on the Bid Form. Payment shall represent full compensation for all labor, material, excavation, including rock, bedding, backfill, compaction, testing and disinfection and equipment required to complete these Bid Items.

BID ITEM NO. 18 - RELOCATION AND CONNECTION OF EXISTING WATER SERVICE METER & NEW METER BOX (WORK WITHIN PUBLIC RIGHT-OF-WAY)

Measurement and payment for this item shall be per connection (unit price) for the contractor to disconnect the existing water service meter located at the rear of the private property and to relocate them to the front roadway right-of-way. This item also includes setting the new meter box (provided by the contractor) and connecting the water service meter to the service connection from the new water main. This activity shall be coordinated with the private property owner to ensure minimum interruption of potable water service.

BID ITEM NO. 19 (19.0 A and 19.0 B) – PRIVATE PROPERTY WATER SERVICE LINE CONNECTION

Measurement and payment for this item shall be per service line connection (unit price) for the contractor to coordinate with each private property owner all aspects of routing the water service line from the rear of the private property to the front roadway right-of-way and connecting to the water service meter (Bid Item No. 18). The contractor shall be responsible for meeting with each individual private property owner to coordinate the routing of the water service line on private

property prior to the commencement of any work. The contractor shall document the agreed upon route on a sketch signed and dated by all parties.

The connection point to the existing water service line shall be assumed to be adjacent to the foundation at the entry point into the residence. This Bid Item includes abandoning in place the existing water service line per all applicable Florida Building Code – Building and Plumbing.

It is expected that some service line connections shall require installation of a backflow assembly at the water service meter and a thermal expansion tank for the residence hot water heater. All work performed on private property must be performed by an appropriately licensed plumbing contractor per the Florida Building Code – Building and Plumbing and the Manatee County Building Department. After the backflow assembly is installed, tested and inspected the contractor shall be responsible to register it using the Manatee County Utility Department on-line registration system.

An individual Manatee County Building Permit, in the amount of \$75 each, will be required for each private property. This item includes all permits, material, labor, equipment, certification and inspection fees, temporary measures, and taxes necessary to connect the water service line to the water service meter (at the roadway right-of-way) in a manner conforming to all pertinent sections of the Florida Building Code – Building and Plumbing and the Manatee County Building Department Codes.

BID ITEM NO. 20 – COMPACT DUCTILE IRON FITTINGS

Payment for all work included in these Bid Items will be made at the applicable Contract unit price bid for furnishing and installing each compact ductile iron fitting as shown on the Contract Drawings and listed on the Bid Form. Payment shall represent full compensation for all labor, material, equipment, excavation, including rock, bedding, backfill, compaction, testing and disinfection required to complete these Bid Items.

BID ITEM NO. 21 - SODDING

Payment for all work included in these Bid Items will be made at the applicable Contract unit price bid per square yard for furnishing and installing sodding as shown on the Contract Drawings and listed on the Bid Form. Payment shall represent full compensation for all labor, materials, necessary equipment, and incidentals necessary to complete the work, ready for approval and acceptance by the Engineer/Owner.

BID ITEM NO. 22 - PAVEMENT REPAIR AND ROAD RESTORATION

Payment for all work included under this Bid Item will be made at the Contract unit

price bid per square yard of base, subbase and tonnage of asphalt for furnishing, installing and testing the road restoration pavement section within these Specifications and as listed on the Bid Form. Measurement will be based on the actual number of square yards of road restoration installed, tested, complete and approved. The measurement will be from face of curb to face of curb or as specified, but not greater than the width of the existing roadway prior to construction. Payment will include complete restoration of the roadway section in accordance with the applicable details on the Contract Drawings, but not less than 1-1/2 inches of FDOT Type III asphaltic concrete, the necessary base, subbase or compacted suitable excavation material all in accordance with these Specifications. No payment for restoration of a private driveway within or outside the right-of-way shall be made under this Bid Item. Payment shall include all items and incidentals necessary to complete the road restoration in accordance with the requirements of Manatee County ready for approval and acceptance by the Engineer/Owner.

BID ITEM NO. 23 – SIDEWALK REPLACEMENT

Payment for all work under this Bid Item shall be made at the applicable Contract unit price bid per square yard of concrete as shown on the Bid Form for furnishing, placing and installing the miscellaneous sidewalk concrete, measured in place, within the lines and grades as shown on the Contract Drawings and as described in the Specifications. All concrete placed outside these lines and grades to fill unauthorized excavation and all concrete for replacing defective work shall be at the expense of the Contractor. Concrete specifically included under any other Bid Item will not be measured or paid for under this Bid Item.

Measurement for miscellaneous sidewalk concrete shall be per actual square yard of concrete furnished, placed and installed as shown on the Contract Drawings or as ordered by the Engineer in writing. Payment shall represent full compensation for all labor, materials, and equipment for mixing, placing, forming and curing of the concrete and all incidentals necessary to complete the concrete work, ready for approval and acceptance by the Engineer/Owner.

BID ITEM NO. 24 - DRIVEWAY RESTORATION

Payment for all work included in these Bid Items will be made at the applicable Contract unit price bid per square yard of shell, asphaltic concrete, or concrete driveway restoration as listed on the Bid Form. Measurement of driveway restoration will be per the actual number of square yards replaced from the right-of-way line to the edge of pavement. Payment shall represent full compensation for all labor, materials and equipment for cutting the edges of existing driveways, compacting subgrade, furnishing and installing the shell, asphaltic concrete or concrete and all incidentals necessary to complete the driveway restoration as shown on the Contract Drawings and included in the Specifications, all ready for approval and acceptance by the Engineer/Owner.

BID ITEM NO. 25 – PREPARATION OF AS-BUILT DRAWINGS

The total lump sum amount for this item will be full compensation for the development and submittal of the as-built documents for the project in accordance with Contract Documents. The as-built documents shall be certified by a professional land surveyor.

BID ITEM NO. 26 – ABANDONMENT IN PLACE AND GROUTING OF EXISTING WATER MAIN

The total lump sum amount for this item will be full compensation for furnishing all labor, equipment, materials and incidentals required to excavate the existing water main, cutting, removal of pipe and fitting segments, dewatering, backfill, compaction and sodding to abandon in place and fill with grout the existing water main shown on the Contract Drawings to be removed from service after installation and placement of the new water service lines and connections into service.

BID ITEM NO. 27 - DISCRETIONARY WORK

Payment for all work under this Bid Item and listed in the Bid Form shall be made only at the Owner's discretion in order to satisfactorily complete the project in accordance with the Plans and Specifications. An amount of \$100,000 has been allocated for this bid item.

PART 2 PRODUCTS (NOT USED)

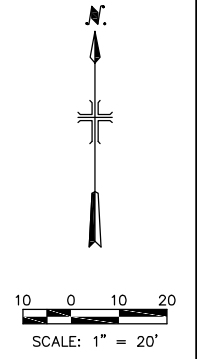
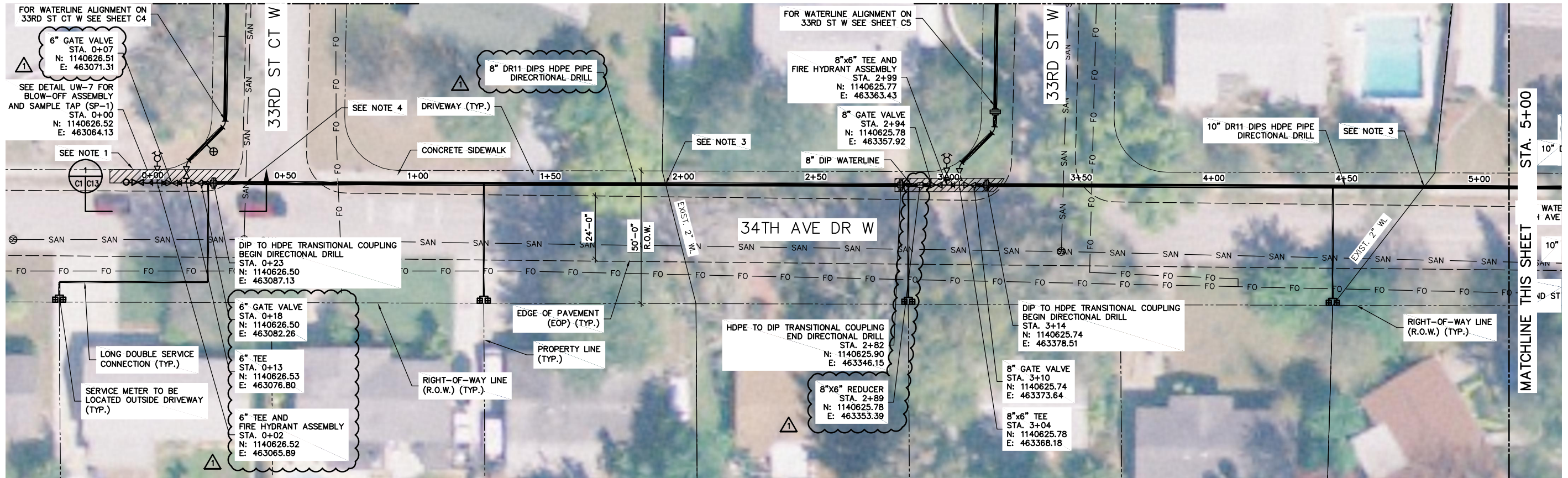
PART 3 EXECUTION (NOT USED)

++ END OF SECTION ++

THIS PAGE INTENTIONALLY LEFT BLANK

FOR CONTINUATION SEE SHEET C4

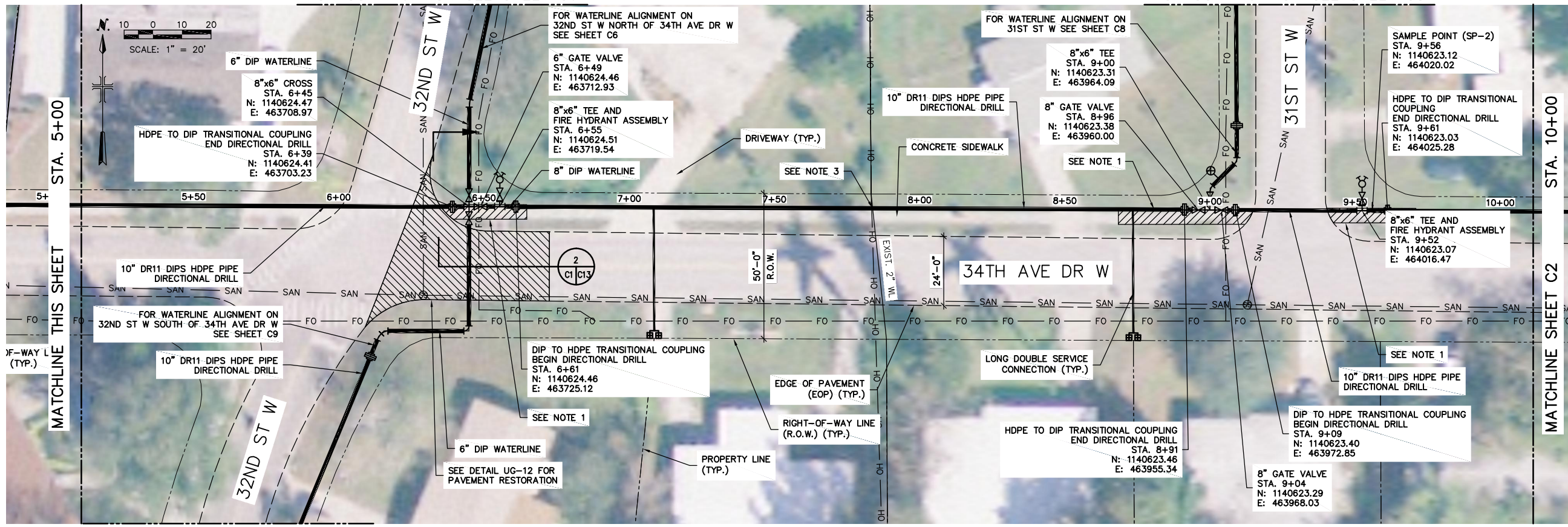
FOR CONTINUATION SEE SHEET C5



48 HOURS BEFORE DIGGING
CALL SUNSHINE
TOLL FREE
1 800 432 4770
UNDERGROUND UTILITIES NOTIFICATION
CENTER OF FLORIDA

FOR CONTINUATION SEE SHEET C6

FOR CONTINUATION SEE SHEET C8



- NOTES:
1. REMOVE CONCRETE SIDEWALK FOR INSTALLATION OF PIPING AND APPURTENANCES FOR OPEN CUT AND DIRECTIONAL DRILLING. REPLACE SIDEWALK AT COMPLETION OF PIPING WORK.
 2. THE SPECIFIC LOCATION AND DEPTH OF THE EXISTING WATER SERVICES AT THE INDIVIDUAL RESIDENCES ARE NOT KNOWN AND ARE NOT SHOWN ON THE DRAWINGS. THE CONTRACTOR IS RESPONSIBLE TO LOCATE THE EXISTING WATER SERVICE AT EACH RESIDENCE AND PERFORM THE INSTALLATION OF THE WATER SERVICE ON THE PRIVATE PROPERTY STARTING AT THE APPROXIMATE EDGE OF THE HOUSE FOUNDATION TO THE CONNECTION POINT AT THE NEW WATERLINE. THE COUNTY WILL ASSIST THE CONTRACTOR WITH LOCATING THE RESIDENTIAL POINT OF CONNECTION AND DETERMINING AN ACCEPTABLE ROUTING ON THE PRIVATE PROPERTY, WITH APPROVAL BY THE HOMEOWNER, TO THE CONNECTION POINT AT THE NEW WATERLINE WITHIN THE ROADWAY RIGHT-OF-WAY.
 3. INSTALL NEW WATERLINE TO AVOID EXISTING WATERLINE.
 4. CONTRACTOR SHALL CONFIRM LOCATION OF EXISTING SANITARY SEWER PRIOR TO DIRECTIONAL DRILLING.
 5. LAND SURVEYING AND UTILITY LOCATE ACTIVITIES WERE NOT PERFORMED DURING THE DESIGN PHASE OF THIS PROJECT. IN LIEU OF THESE ACTIVITIES, COUNTY GIS INFORMATION WAS USED FOR THE ROADWAY RIGHT-OF-WAY LINES AND PROPERTY LINES WERE USED AS AN OVERLAY ON AN AERIAL PHOTOGRAPH. THE COUNTY'S WATER AND WASTEWATER ATLAS INFORMATION WAS USED TO PROVIDE THE GENERAL LOCATION OF THE EXISTING BURIED WATER AND WASTEWATER UTILITIES. IN ADDITION, THE VARIOUS UTILITY COMPANIES LISTED ON DRAWING G-2 WERE CONTACTED. THE INFORMATION RECEIVED FROM THE UTILITY COMPANIES WAS ADDED TO THE CONTRACT DRAWINGS TO INDICATE ONLY THE GENERAL LOCATION OF THE EXISTING BURIED UTILITIES WITHIN THE PROPOSED ROUTE OF THE WATERLINE ALIGNMENT. THE ACCURACY OF THE VARIOUS UTILITY LOCATIONS SHOWN ON THE DRAWINGS HAS NOT BEEN FIELD VERIFIED. THE CONTRACTOR SHALL BE RESPONSIBLE FOR CONTACTING ALL UTILITY COMPANIES AND/OR SUNSHINE TO LOCATE ALL EXISTING BURIED UTILITIES IN THE ALIGNMENT OF THE PROPOSED WATERLINE PRIOR TO COMMENCING WORK ACTIVITIES. THE CENTERLINE OF THE WATERLINE CAN BE RELOCATED SLIGHTLY TO ACCOMMODATE EXISTING UTILITIES AFTER NOTIFICATION OF THE NECESSARY CHANGES TO THE OWNER.

BID SET

XREFS: \\2006 aerial.dwg \site plan.dwg IMAGES:None
 User:cmr\jg Site:PIRNE STANDARD File:\ACAD\PROJ\A013200\SITE PLAN 2.DWG Scale:1:1 Date:05/12/2009 Time:14:33 Layout:C1

MALCOLM PIRNIE
 CERTIFICATE OF AUTHORIZATION NO. 67
 INDEPENDENT ENVIRONMENTAL ENGINEERS,
 SCIENTISTS & CONSULTANTS
 2301 MATLAND CENTER PARKWAY
 MATLAND, FLORIDA 32751

REVISIONS			
NO.	BY	DATE	REMARKS
1	VAH	06/15/10	ADDENDUM NO.1

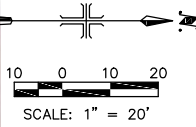
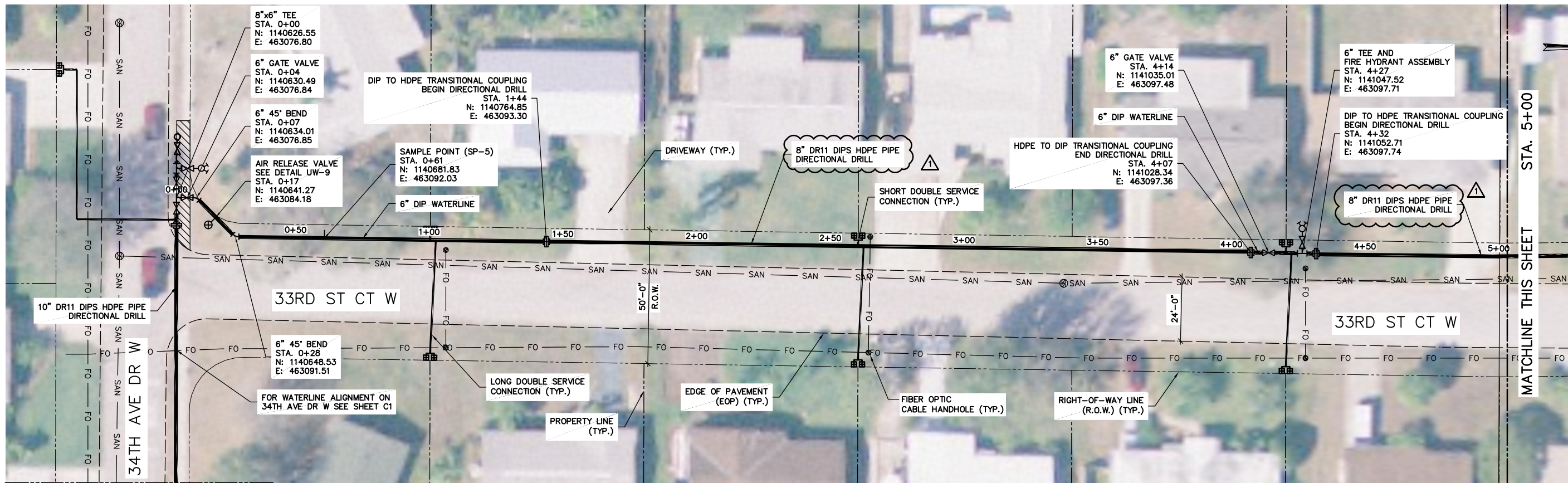
DES VAH
 DWN SC
 CKD VAH



MANATEE COUNTY
**CLEARVIEW MANOR
 WATERLINE IMPROVEMENTS**

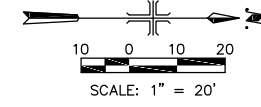
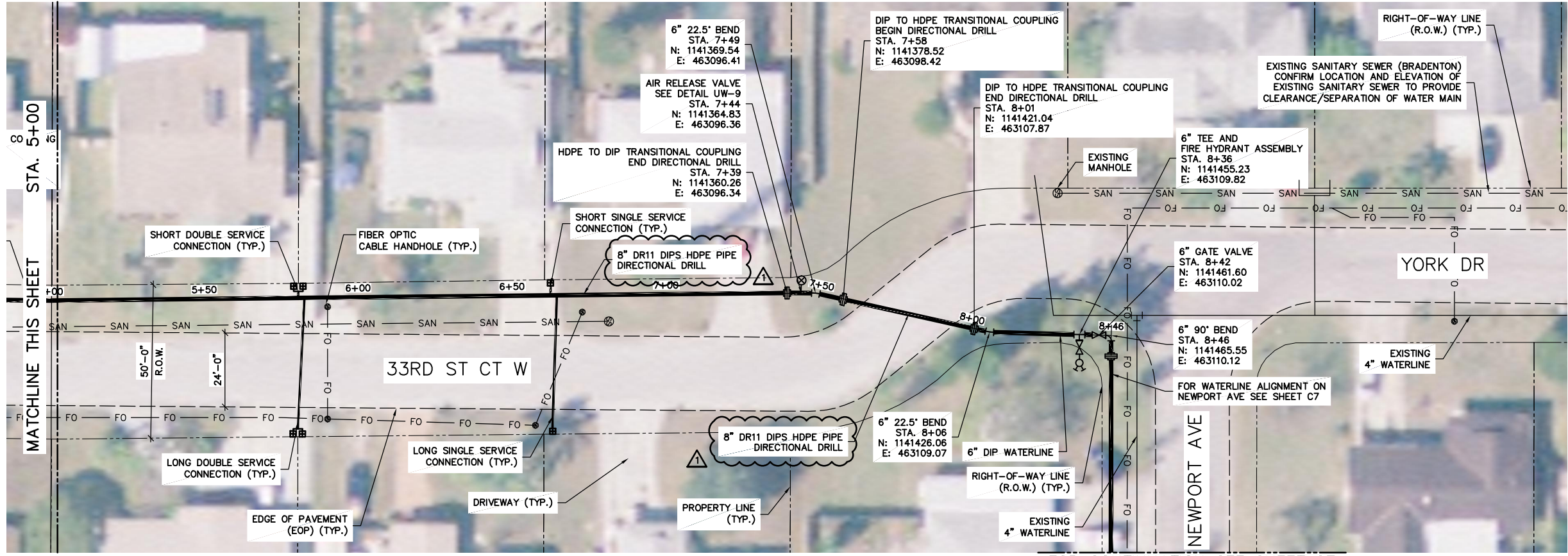
**SITE PLAN
 34TH AVE DR W STA. 0+00 TO 10+00**
 SCALE: 1" = 20'

COPYRIGHT ©
 MALCOLM PIRNIE, INC.
 DATE MARCH 2010
 C1 SHEET OF
 CAD REF. NO.



FOR CONTINUATION SEE SHEET C1

MATCHLINE THIS SHEET



NOTE:

- THE SPECIFIC LOCATION AND DEPTH OF THE EXISTING WATER SERVICES AT THE INDIVIDUAL RESIDENCES ARE NOT KNOWN AND ARE NOT SHOWN ON THE DRAWINGS. THE CONTRACTOR IS RESPONSIBLE TO LOCATE THE EXISTING WATER SERVICE AT EACH RESIDENCE AND PERFORM THE INSTALLATION OF THE WATER SERVICE ON THE PRIVATE PROPERTY STARTING AT THE APPROXIMATE EDGE OF THE HOUSE FOUNDATION TO THE CONNECTION POINT AT THE NEW WATERLINE. THE COUNTY WILL ASSIST THE CONTRACTOR WITH LOCATING THE RESIDENTIAL POINT OF CONNECTION AND DETERMINING AN ACCEPTABLE ROUTING ON THE PRIVATE PROPERTY, WITH APPROVAL BY THE HOMEOWNER, TO THE CONNECTION POINT AT THE NEW WATERLINE WITHIN THE ROADWAY RIGHT-OF-WAY.
- REMOVE CONCRETE SIDEWALK FOR INSTALLATION OF DIRECTIONAL DRILLING. REPLACE SIDEWALK AT COMPLETION OF PIPING WORK.
- INSTALL NEW WATERLINE TO AVOID EXISTING WATERLINE.
- CONTRACTOR SHALL CONFIRM LOCATION OF EXISTING SANITARY SEWER PRIOR TO DIRECTIONAL DRILLING.
- LAND SURVEYING AND UTILITY LOCATE ACTIVITIES WERE NOT PERFORMED DURING THE DESIGN PHASE OF THIS PROJECT. IN LIEU OF THESE ACTIVITIES, COUNTY GIS INFORMATION WAS USED FOR THE ROADWAY RIGHT-OF-WAY LINES AND PROPERTY LINES. THESE WERE USED AS AN OVERLAY ON AN AERIAL PHOTOGRAPH. THE COUNTY'S WATER AND WASTEWATER ATLAS INFORMATION WAS USED TO PROVIDE THE GENERAL LOCATION OF THE EXISTING BURIED WATER AND WASTEWATER UTILITIES. IN ADDITION, THE VARIOUS UTILITY COMPANIES LISTED ON DRAWING G-2 WERE CONTACTED. THE INFORMATION RECEIVED FROM THE UTILITY COMPANIES WAS ADDED TO THE CONTRACT DRAWINGS TO INDICATE ONLY THE GENERAL LOCATION OF THE EXISTING BURIED UTILITIES WITHIN THE PROPOSED ROUTE OF THE WATERLINE ALIGNMENT. THE ACCURACY OF THE VARIOUS UTILITY LOCATIONS SHOWN ON THE DRAWINGS HAS NOT BEEN FIELD VERIFIED. THE CONTRACTOR SHALL BE RESPONSIBLE FOR CONTACTING ALL UTILITY COMPANIES AND/OR SUNSHINE TO LOCATE ALL EXISTING BURIED UTILITIES IN THE ALIGNMENT OF THE PROPOSED WATERLINE PRIOR TO COMMENCING WORK ACTIVITIES. THE CENTERLINE OF THE WATERLINE CAN BE RELOCATED SLIGHTLY TO ACCOMMODATE EXISTING UTILITIES AFTER NOTIFICATION OF THE NECESSARY CHANGES THE OWNER.

48 HOURS BEFORE DIGGING
CALL SUNSHINE
TOLL FREE
1 800 432 4770
UNDERGROUND UTILITIES NOTIFICATION
CENTER OF FLORIDA

FOR CONTINUATION SEE SHEET C7

MALCOLM PIRNIE
CERTIFICATE OF AUTHORIZATION NO. 67
INDEPENDENT ENVIRONMENTAL ENGINEERS,
SCIENTISTS & CONSULTANTS
2301 MATLAND CENTER PARKWAY
MATLAND, FLORIDA 32751

REVISIONS			
NO.	BY	DATE	REMARKS
1	VAH	06/15/10	ADDENDUM NO.1

DES _____
DWN _____
CKD ###

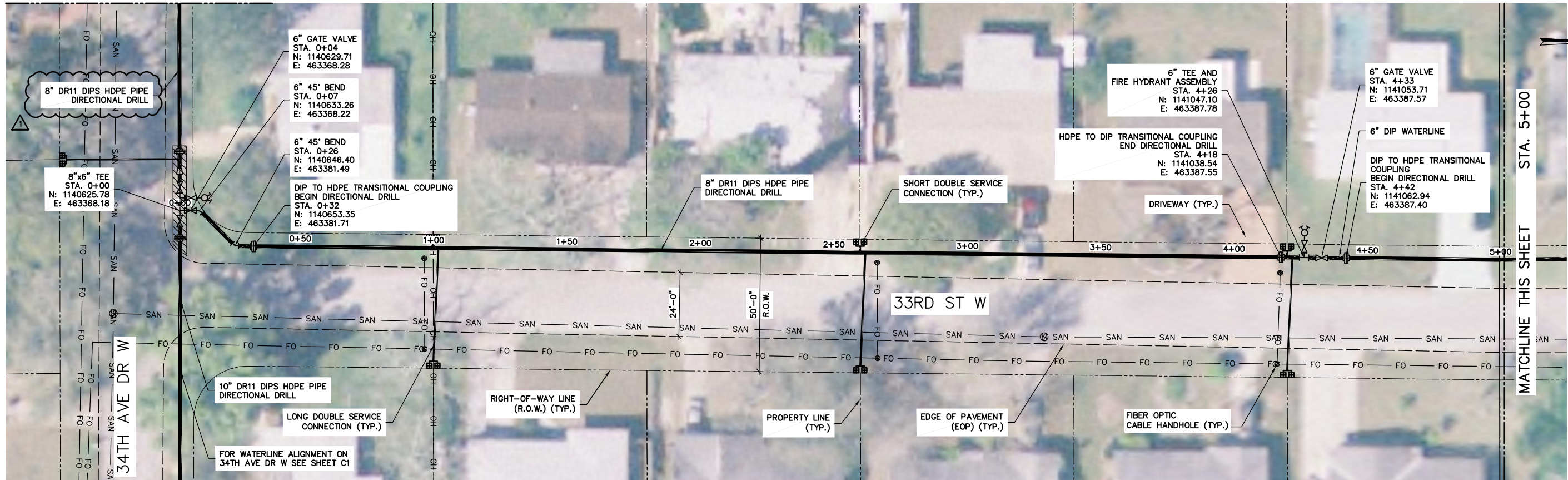
MANATEE COUNTY
**CLEARVIEW MANOR
WATERLINE IMPROVEMENTS**

**SITE PLAN
33RD ST CT W**
SCALE: 1" = 20'

BID SET
COPYRIGHT ©
MALCOLM PIRNIE, INC.
DATE MARCH 2010
C4 SHEET ____ OF ____
CAD REF. NO. _____

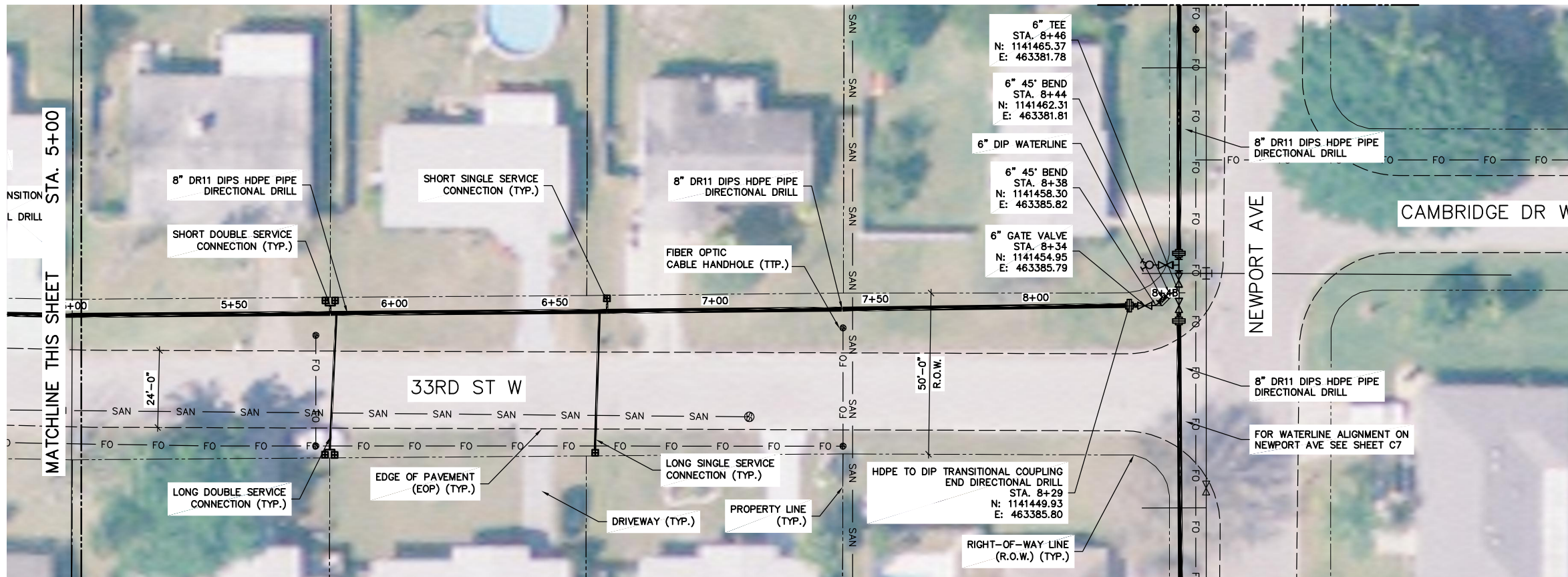
XREFS: 2006 aerial.dwg \site plan.dwg IMAGES:None User:CORNEJO Spec:PIRNIE STANDARD Title:\CAD\PRO\0132 - Manatee County\0132005-Clearview Manor\SITE PLAN 2.DWG Scale:1:1 Date:05/14/2009 Time:09:56 Layout:C1 (2)

FOR CONTINUATION SEE SHEET C1

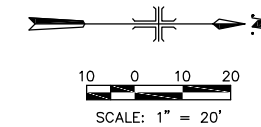


FOR CONTINUATION SEE SHEET C1

FOR CONTINUATION SEE SHEET C7



FOR CONTINUATION SEE SHEET C7



NOTE:

- THE SPECIFIC LOCATION AND DEPTH OF THE EXISTING WATER SERVICES AT THE INDIVIDUAL RESIDENCES ARE NOT KNOWN AND ARE NOT SHOWN ON THE DRAWINGS. THE CONTRACTOR IS RESPONSIBLE TO LOCATE THE EXISTING WATER SERVICE AT EACH RESIDENCE AND PERFORM THE INSTALLATION OF THE WATER SERVICE ON THE PRIVATE PROPERTY STARTING AT THE APPROXIMATE EDGE OF THE HOUSE FOUNDATION TO THE CONNECTION POINT AT THE NEW WATERLINE. THE COUNTY WILL ASSIST THE CONTRACTOR WITH LOCATING THE RESIDENTIAL POINT OF CONNECTION AND DETERMINING AN ACCEPTABLE ROUTING ON THE PRIVATE PROPERTY, WITH APPROVAL BY THE HOMEOWNER, TO THE CONNECTION POINT AT THE NEW WATERLINE WITHIN THE ROADWAY RIGHT-OF-WAY.
- LAND SURVEYING AND UTILITY LOCATE ACTIVITIES WERE NOT PERFORMED DURING THE DESIGN PHASE OF THIS PROJECT. IN LIEU OF THESE ACTIVITIES, COUNTY GIS INFORMATION WAS USED FOR THE ROADWAY RIGHT-OF-WAY LINES AND PROPERTY LINES WERE USED AS AN OVERLAY ON AN AERIAL PHOTOGRAPH. THE COUNTY'S WATER AND WASTEWATER ATLAS INFORMATION WAS USED TO PROVIDE THE GENERAL LOCATION OF THE EXISTING BURIED WATER AND WASTEWATER UTILITIES. IN ADDITION, THE VARIOUS UTILITY COMPANIES LISTED ON DRAWING G-2 WERE CONTACTED. THE INFORMATION RECEIVED FROM THE UTILITY COMPANIES WAS ADDED TO THE CONTRACT DRAWINGS TO INDICATE ONLY THE GENERAL LOCATION OF THE EXISTING BURIED UTILITIES WITHIN THE PROPOSED ROUTE OF THE WATERLINE ALIGNMENT. THE ACCURACY OF THE VARIOUS UTILITY LOCATIONS SHOWN ON THE DRAWINGS HAS NOT BEEN FIELD VERIFIED. THE CONTRACTOR SHALL BE RESPONSIBLE FOR CONTACTING ALL UTILITY COMPANIES AND/OR SUNSHINE TO LOCATE ALL EXISTING BURIED UTILITIES IN THE ALIGNMENT OF THE PROPOSED WATERLINE PRIOR TO COMMENCING WORK ACTIVITIES. THE CENTERLINE OF THE WATERLINE CAN BE RELOCATED SLIGHTLY TO ACCOMMODATE EXISTING UTILITIES AFTER NOTIFICATION OF THE NECESSARY CHANGES TO THE OWNER.

48 HOURS BEFORE DIGGING
CALL SUNSHINE
TOLL FREE
1 800 432 4770
UNDERGROUND UTILITIES NOTIFICATION
CENTER OF FLORIDA

BID SET

MALCOLM PIRNIE
CERTIFICATE OF AUTHORIZATION NO. 67
INDEPENDENT ENVIRONMENTAL ENGINEERS,
SCIENTISTS & CONSULTANTS
2301 MATLAND CENTER PARKWAY
MATLAND, FLORIDA 32751

REVISIONS			
NO.	BY	DATE	REMARKS
1	VAH	06/15/10	ADDENDUM NO.1

DES - VAH
DWN - SC
CKD - VAH



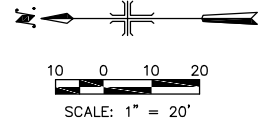
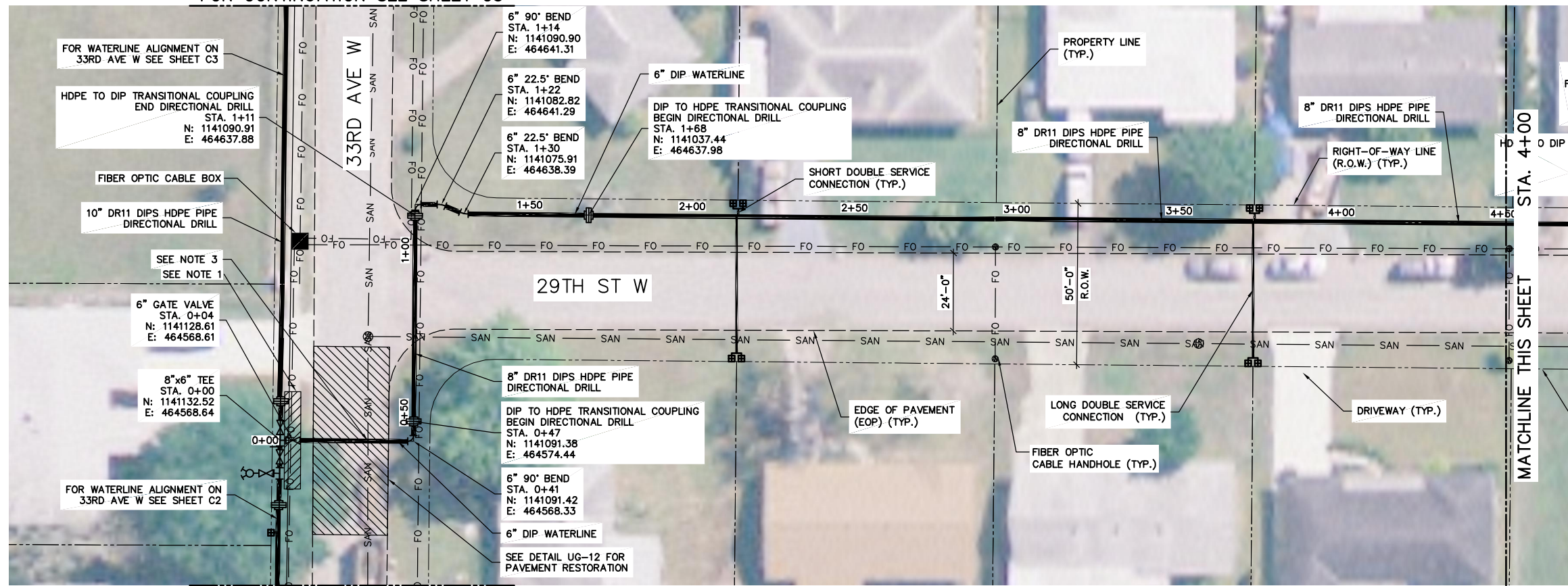
MANATEE COUNTY
**CLEARVIEW MANOR
WATERLINE IMPROVEMENTS**

**SITE PLAN
33RD ST W**
SCALE: 1" = 20'

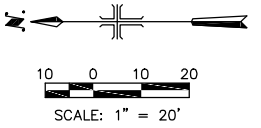
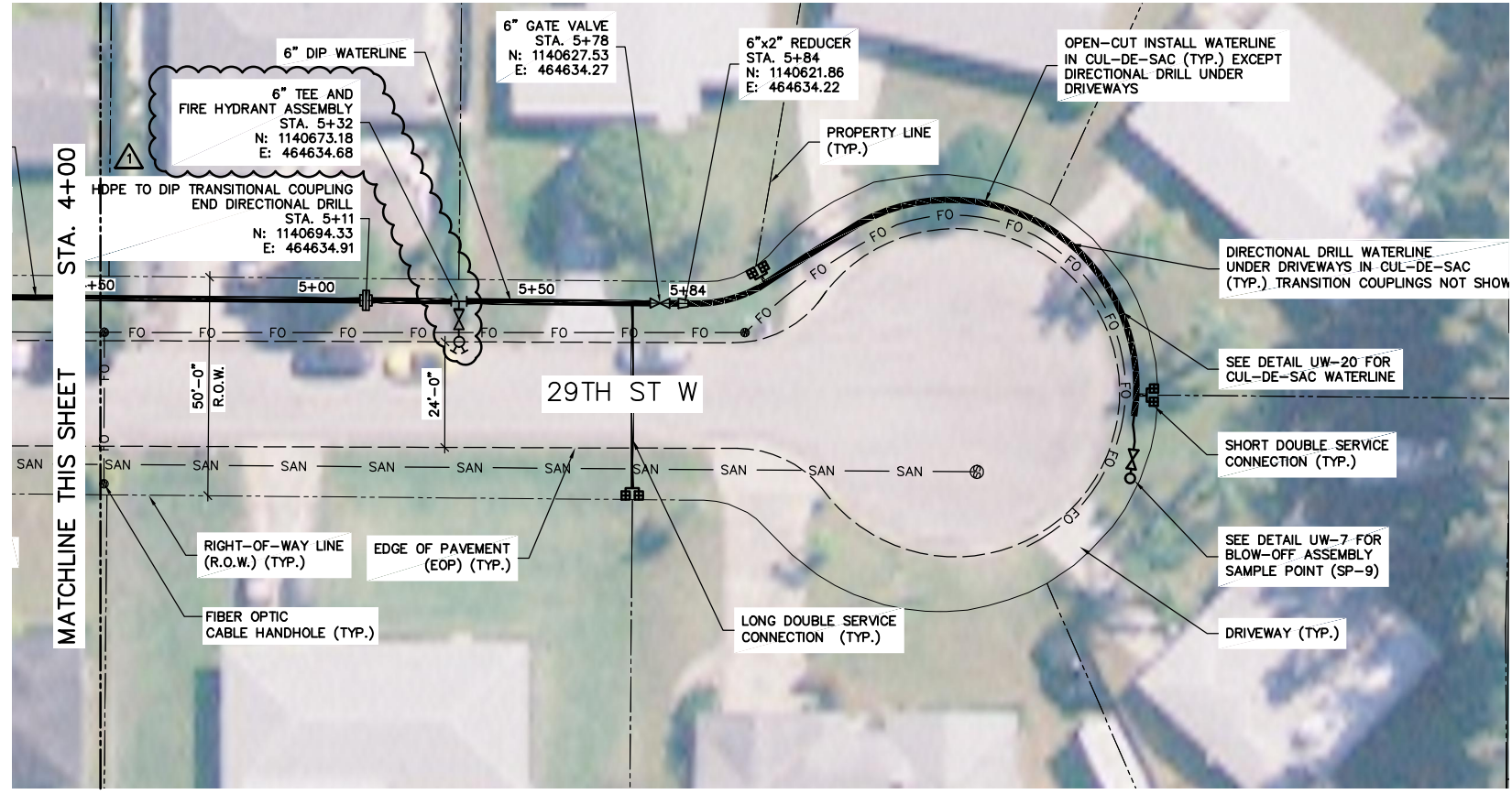
COPYRIGHT ©
MALCOLM PIRNIE, INC.
DATE MARCH 2010
C5 SHEET OF
CAD REF. NO.

XREFS: 2006 aerial.dwg \site plan.dwg IMAGES:None User:CORNEJO Spec:PIRNIE STANDARD Title:\CAD\PRO\0132 - Manatee County\0132005-Clearview Manor\SITE PLAN 2.DWG Scale:1:1 Date:05/14/2009 Time:09:56 Layout:C1 (2)

FOR CONTINUATION SEE SHEET C3



FOR CONTINUATION SEE SHEET C2



- NOTE:**
- REMOVE CONCRETE SIDEWALK FOR INSTALLATION OF DIRECTIONAL DRILLING. REPLACE SIDEWALK AT COMPLETION OF PIPING WORK.
 - THE SPECIFIC LOCATION AND DEPTH OF THE EXISTING WATER SERVICES AT THE INDIVIDUAL RESIDENCES ARE NOT KNOWN AND ARE NOT SHOWN ON THE DRAWINGS. THE CONTRACTOR IS RESPONSIBLE TO LOCATE THE EXISTING WATER SERVICE AT EACH RESIDENCE AND PERFORM THE INSTALLATION OF THE WATER SERVICE ON THE PRIVATE PROPERTY STARTING AT THE APPROXIMATE EDGE OF THE HOUSE FOUNDATION TO THE CONNECTION POINT AT THE NEW WATERLINE. THE COUNTY WILL ASSIST THE CONTRACTOR WITH LOCATING THE RESIDENTIAL POINT OF CONNECTION AND DETERMINING AN ACCEPTABLE ROUTING ON THE PRIVATE PROPERTY, WITH APPROVAL BY THE HOMEOWNER, TO THE CONNECTION POINT AT THE NEW WATERLINE WITHIN THE ROADWAY RIGHT-OF-WAY.
 - CONTRACTOR SHALL CONFIRM LOCATION OF EXISTING SANITARY SEWER PRIOR TO DIRECTIONAL DRILLING.
 - LAND SURVEYING AND UTILITY LOCATE ACTIVITIES WERE NOT PERFORMED DURING THE DESIGN PHASE OF THIS PROJECT. IN LIEU OF THESE ACTIVITIES, COUNTY GIS INFORMATION WAS USED FOR THE ROADWAY RIGHT-OF-WAY LINES AND PROPERTY LINES WERE USED AS AN OVERLAY ON AN AERIAL PHOTOGRAPH. THE COUNTY'S WATER AND WASTEWATER ATLAS INFORMATION WAS USED TO PROVIDE THE GENERAL LOCATION OF THE EXISTING BURIED WATER AND WASTEWATER UTILITIES. IN ADDITION, THE VARIOUS UTILITY COMPANIES LISTED ON DRAWING G-2 WERE CONTACTED. THE INFORMATION RECEIVED FROM THE UTILITY COMPANIES WAS ADDED TO THE CONTRACT DRAWINGS TO INDICATE ONLY THE GENERAL LOCATION OF THE EXISTING BURIED UTILITIES WITHIN THE PROPOSED ROUTE OF THE WATERLINE ALIGNMENT. THE ACCURACY OF THE VARIOUS UTILITY LOCATIONS SHOWN ON THE DRAWINGS HAS NOT BEEN FIELD VERIFIED. THE CONTRACTOR SHALL BE RESPONSIBLE FOR CONTACTING ALL UTILITY COMPANIES AND/OR SUNSHINE TO LOCATE ALL EXISTING BURIED UTILITIES IN THE ALIGNMENT OF THE PROPOSED WATERLINE PRIOR TO COMMENCING WORK ACTIVITIES. THE CENTERLINE OF THE WATERLINE CAN BE RELOCATED SLIGHTLY TO ACCOMMODATE EXISTING UTILITIES AFTER NOTIFICATION OF THE NECESSARY CHANGES THE OWNER.

48 HOURS BEFORE DIGGING
CALL SUNSHINE
 TOLL FREE
 1 800 432 4770
 UNDERGROUND UTILITIES NOTIFICATION
 CENTER OF FLORIDA

XREFS: \\2006 aerial.dwg \site plan.dwg IMAGES:None User:CORNEJO Date:05/14/2009 Time:09:56 Layout:C1 (2)

MALCOLM PIRNIE
 CERTIFICATE OF AUTHORIZATION NO. 67
 INDEPENDENT ENVIRONMENTAL ENGINEERS,
 SCIENTISTS & CONSULTANTS
 2301 MATLAND CENTER PARKWAY
 MATLAND, FLORIDA 32751

REVISIONS			
NO.	BY	DATE	REMARKS
1	VAH	06/15/10	ADDENDUM NO.1

DES VAH
 DWN SC
 CKD VAH



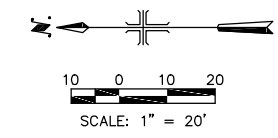
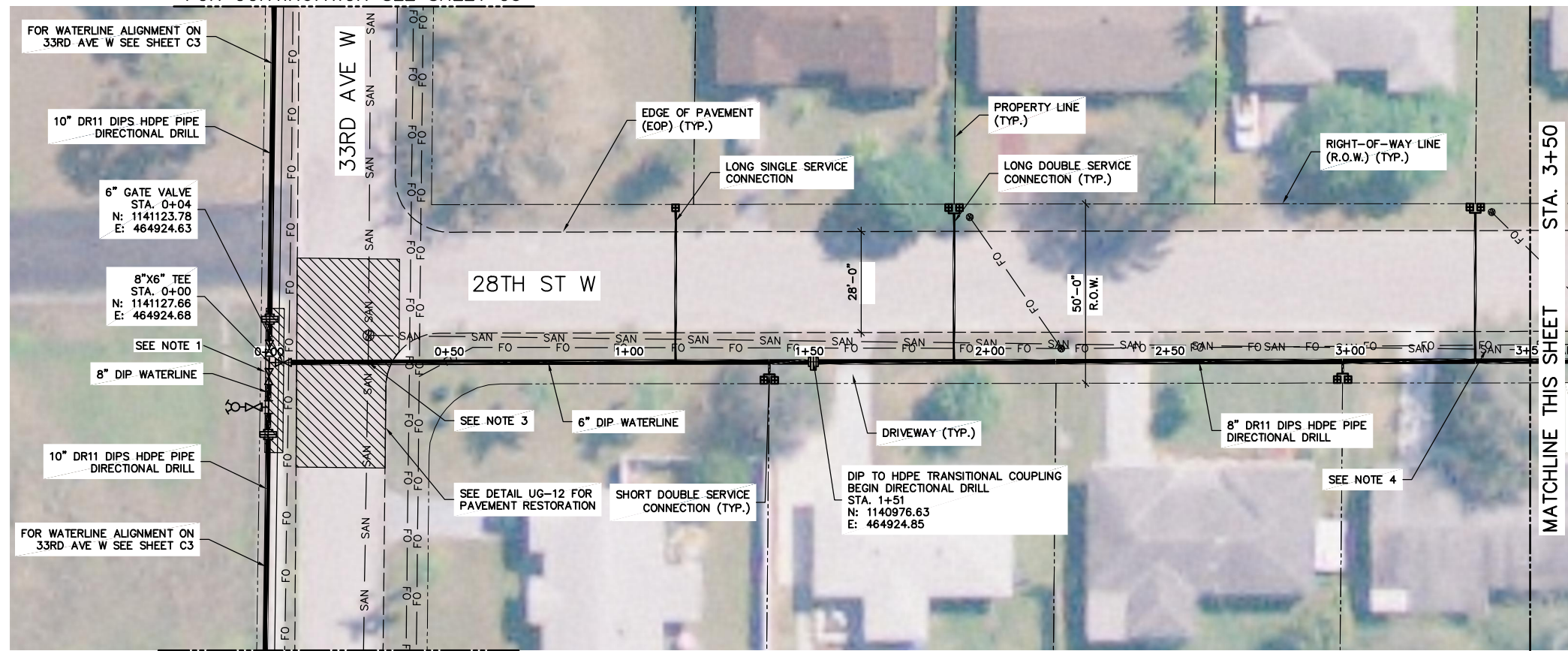
MANATEE COUNTY
**CLEARVIEW MANOR
 WATERLINE IMPROVEMENTS**

BID SET

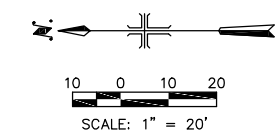
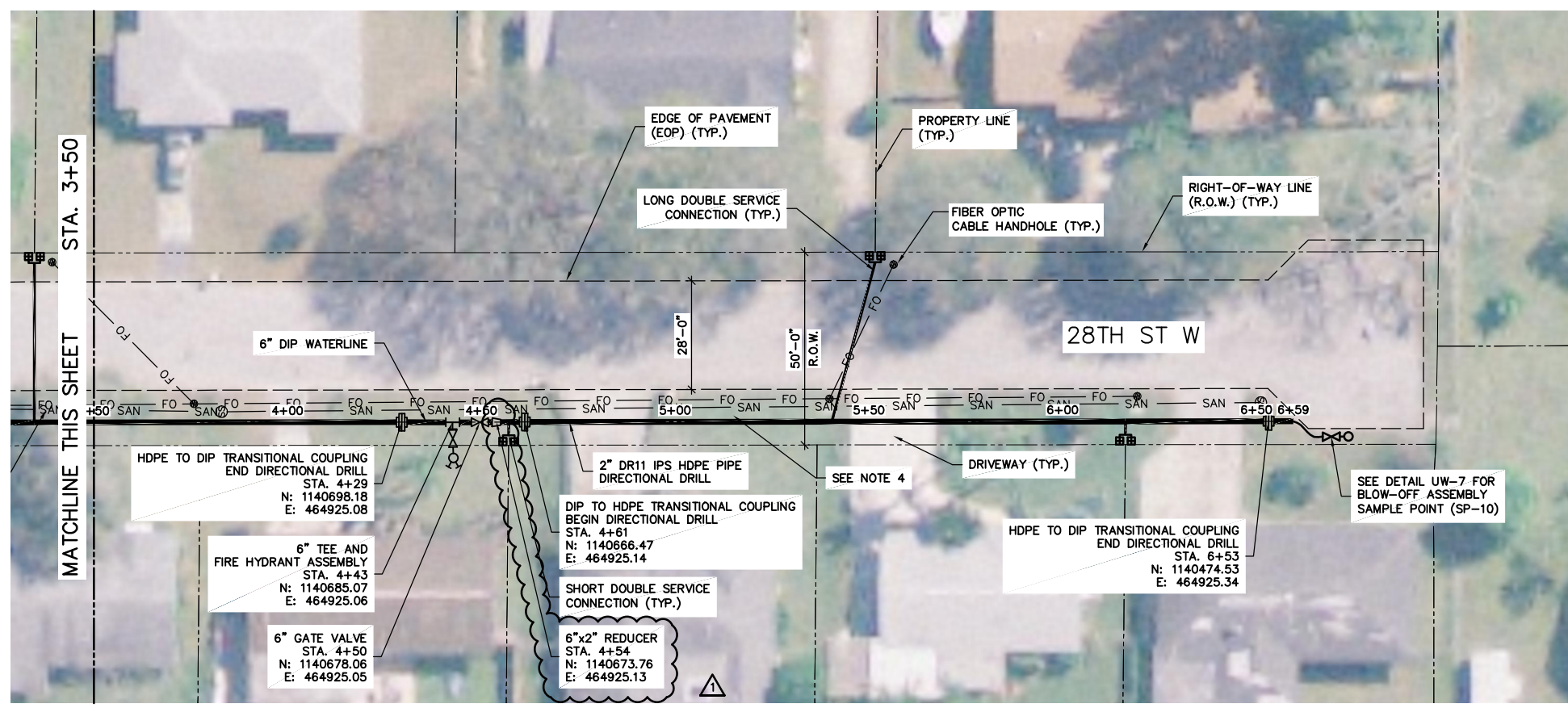
COPYRIGHT ©
 MALCOLM PIRNIE, INC.
 DATE MARCH 2010
 C10 SHEET ____ OF ____
 CAD REF. NO. _____

**SITE PLAN
 29TH ST W**
 SCALE: 1" = 20'

FOR CONTINUATION SEE SHEET C3



FOR CONTINUATION SEE SHEET C3



- NOTE:
- REMOVE CONCRETE SIDEWALK FOR INSTALLATION OF DIRECTIONAL DRILLING. REPLACE SIDEWALK AT COMPLETION OF PIPING WORK.
 - THE SPECIFIC LOCATION AND DEPTH OF THE EXISTING WATER SERVICES AT THE INDIVIDUAL RESIDENCES ARE NOT KNOWN AND ARE NOT SHOWN ON THE DRAWINGS. THE CONTRACTOR IS RESPONSIBLE TO LOCATE THE EXISTING WATER SERVICE AT EACH RESIDENCE AND PERFORM THE INSTALLATION OF THE WATER SERVICE ON THE PRIVATE PROPERTY STARTING AT THE APPROXIMATE EDGE OF THE HOUSE FOUNDATION TO THE CONNECTION POINT AT THE NEW WATERLINE. THE COUNTY WILL ASSIST THE CONTRACTOR WITH LOCATING THE RESIDENTIAL POINT OF CONNECTION AND DETERMINING AN ACCEPTABLE ROUTING ON THE PRIVATE PROPERTY, WITH APPROVAL BY THE HOMEOWNER, TO THE CONNECTION POINT AT THE NEW WATERLINE WITHIN THE ROADWAY RIGHT-OF-WAY.
 - CONTRACTOR SHALL CONFIRM LOCATION OF EXISTING SANITARY SEWER PRIOR TO DIRECTIONAL DRILLING.
 - CONTRACTOR SHALL PROVIDE SEPARATION DISTANCE BETWEEN EXISTING SANITARY SEWER AND PROPOSED WATERLINE.
 - LAND SURVEYING AND UTILITY LOCATE ACTIVITIES WERE NOT PERFORMED DURING THE DESIGN PHASE OF THIS PROJECT. IN LIEU OF THESE ACTIVITIES, COUNTY GIS INFORMATION WAS USED FOR THE ROADWAY RIGHT-OF-WAY LINES AND PROPERTY LINES WERE USED AS AN OVERLAY ON AN AERIAL PHOTOGRAPH. THE COUNTY'S WATER AND WASTEWATER ATLAS INFORMATION WAS USED TO PROVIDE THE GENERAL LOCATION OF THE EXISTING BURIED WATER AND WASTEWATER UTILITIES. IN ADDITION, THE VARIOUS UTILITY COMPANIES LISTED ON DRAWING G-2 WERE CONTACTED. THE INFORMATION RECEIVED FROM THE UTILITY COMPANIES WAS ADDED TO THE CONTRACT DRAWINGS TO INDICATE ONLY THE GENERAL LOCATION OF THE EXISTING BURIED UTILITIES WITHIN THE PROPOSED ROUTE OF THE WATERLINE ALIGNMENT. THE ACCURACY OF THE VARIOUS UTILITY LOCATIONS SHOWN ON THE DRAWINGS HAS NOT BEEN FIELD VERIFIED. THE CONTRACTOR SHALL BE RESPONSIBLE FOR CONTACTING ALL UTILITY COMPANIES AND/OR SUNSHINE TO LOCATE ALL EXISTING BURIED UTILITIES IN THE ALIGNMENT OF THE PROPOSED WATERLINE PRIOR TO COMMENCING WORK ACTIVITIES. THE CENTERLINE OF THE WATERLINE CAN BE RELOCATED SLIGHTLY TO ACCOMMODATE EXISTING UTILITIES AFTER NOTIFICATION OF THE NECESSARY CHANGES THE OWNER.

48 HOURS BEFORE DIGGING
CALL SUNSHINE
TOLL FREE
1 800 432 4770
UNDERGROUND UTILITY NOTIFICATION
CENTER OF FLORIDA

BID SET

XREFS: \\2006 aerial.dwg \site plan.dwg IMAGES:None User:CORNEJO Spec:Pirnie STANDARD Title: \\CAD\PROJ\0132 - Manatee County\0132005-Clearview Manor\SITE PLAN 2.DWG Scale: 1:1 Date: 05/14/2009 Time: 09:56 Layout: C1 (2)

MALCOLM PIRNIE
CERTIFICATE OF AUTHORIZATION NO. 67
INDEPENDENT ENVIRONMENTAL ENGINEERS,
SCIENTISTS & CONSULTANTS
2301 MATLAND CENTER PARKWAY
MATLAND, FLORIDA 32751

REVISIONS			
NO.	BY	DATE	REMARKS
1	VAH	06/15/10	ADDENDUM NO.1

DES - VAH
DWN - SC
CKD - VAH

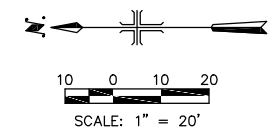
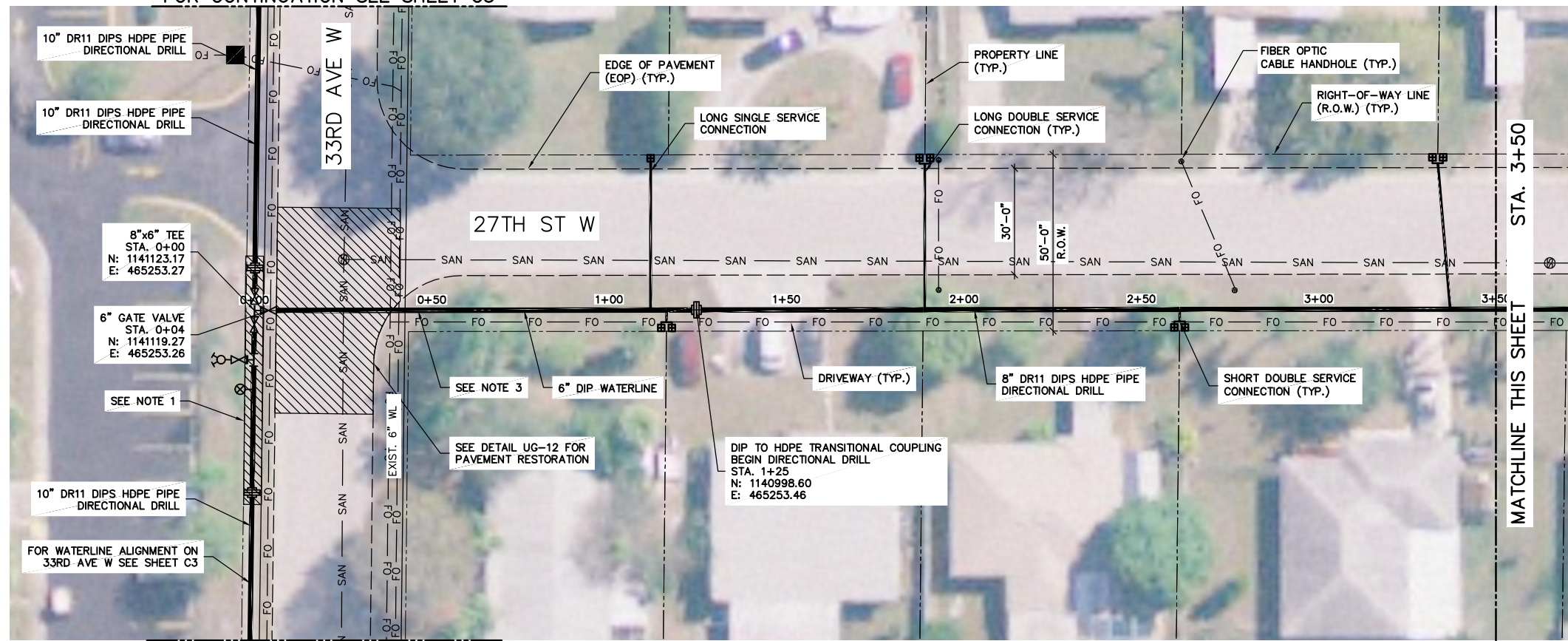


MANATEE COUNTY
**CLEARVIEW MANOR
WATERLINE IMPROVEMENTS**

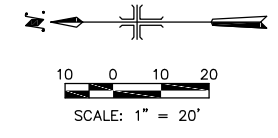
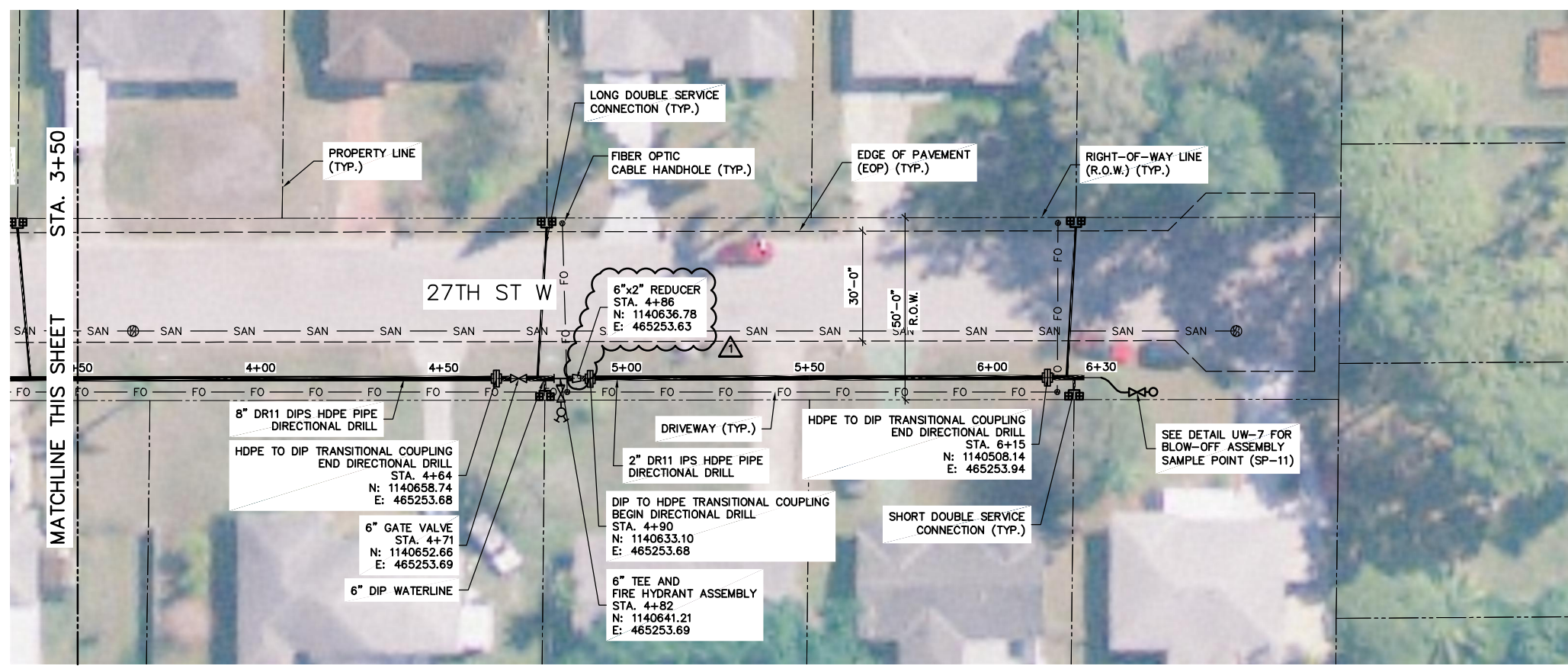
**SITE PLAN
28TH ST W**
SCALE: 1" = 20'

COPYRIGHT ©
MALCOLM PIRNIE, INC.
DATE MARCH 2010
C11 SHEET ____ OF ____
CAD REF. NO. _____

FOR CONTINUATION SEE SHEET C3



FOR CONTINUATION SEE SHEET C3



- NOTE:
1. REMOVE CONCRETE SIDEWALK FOR INSTALLATION OF DIRECTIONAL DRILLING. REPLACE SIDEWALK AT COMPLETION OF PIPING WORK.
 2. THE SPECIFIC LOCATION AND DEPTH OF THE EXISTING WATER SERVICES AT THE INDIVIDUAL RESIDENCES ARE NOT KNOWN AND ARE NOT SHOWN ON THE DRAWINGS. THE CONTRACTOR IS RESPONSIBLE TO LOCATE THE EXISTING WATER SERVICE AT EACH RESIDENCE AND PERFORM THE INSTALLATION OF THE WATER SERVICE ON THE PRIVATE PROPERTY STARTING AT THE APPROXIMATE EDGE OF THE HOUSE FOUNDATION TO THE CONNECTION POINT AT THE NEW WATERLINE. THE COUNTY WILL ASSIST THE CONTRACTOR WITH LOCATING THE RESIDENTIAL POINT OF CONNECTION AND DETERMINING AN ACCEPTABLE ROUTING ON THE PRIVATE PROPERTY, WITH APPROVAL BY THE HOMEOWNER, TO THE CONNECTION POINT AT THE NEW WATERLINE WITHIN THE ROADWAY RIGHT-OF-WAY.
 3. CONTRACTOR SHALL CONFIRM LOCATION OF EXISTING SANITARY SEWER AND WATERLINE PRIOR TO DIRECTIONAL DRILLING.
 4. LAND SURVEYING AND UTILITY LOCATE ACTIVITIES WERE NOT PERFORMED DURING THE DESIGN PHASE OF THIS PROJECT. IN LIEU OF THESE ACTIVITIES, COUNTY GIS INFORMATION WAS USED FOR THE ROADWAY RIGHT-OF-WAY LINES AND PROPERTY LINES WERE USED AS AN OVERLAY ON AN AERIAL PHOTOGRAPH. THE COUNTY'S WATER AND WASTEWATER ATLAS INFORMATION WAS USED TO PROVIDE THE GENERAL LOCATION OF THE EXISTING BURIED WATER AND WASTEWATER UTILITIES. IN ADDITION, THE VARIOUS UTILITY COMPANIES LISTED ON DRAWING G-2 WERE CONTACTED. THE INFORMATION RECEIVED FROM THE UTILITY COMPANIES WAS ADDED TO THE CONTRACT DRAWINGS TO INDICATE ONLY THE GENERAL LOCATION OF THE EXISTING BURIED UTILITIES WITHIN THE PROPOSED ROUTE OF THE WATERLINE ALIGNMENT. THE ACCURACY OF THE VARIOUS UTILITY LOCATIONS SHOWN ON THE DRAWINGS HAS NOT BEEN FIELD VERIFIED. THE CONTRACTOR SHALL BE RESPONSIBLE FOR CONTACTING ALL UTILITY COMPANIES AND/OR SUNSHINE TO LOCATE ALL EXISTING BURIED UTILITIES IN THE ALIGNMENT OF THE PROPOSED WATERLINE PRIOR TO COMMENCING WORK ACTIVITIES. THE CENTERLINE OF THE WATERLINE CAN BE RELOCATED SLIGHTLY TO ACCOMMODATE EXISTING UTILITIES AFTER NOTIFICATION OF THE NECESSARY CHANGES TO THE OWNER.

48 HOURS BEFORE DRIVING
CALL SUNSHINE
TOLL FREE
1 800 432 4770
UNDERGROUND UTILITIES NOTIFICATION
CENTER OF FLORIDA

BID SET

MALCOLM PIRNIE
CERTIFICATE OF AUTHORIZATION NO. 67
INDEPENDENT ENVIRONMENTAL ENGINEERS,
SCIENTISTS & CONSULTANTS
2301 MATLAND CENTER PARKWAY
MATLAND, FLORIDA 32751

REVISIONS			
NO.	BY	DATE	REMARKS
1	VAH	06/15/10	ADDENDUM NO.1

DES - VAH
DWN - SC
CKD - VAH



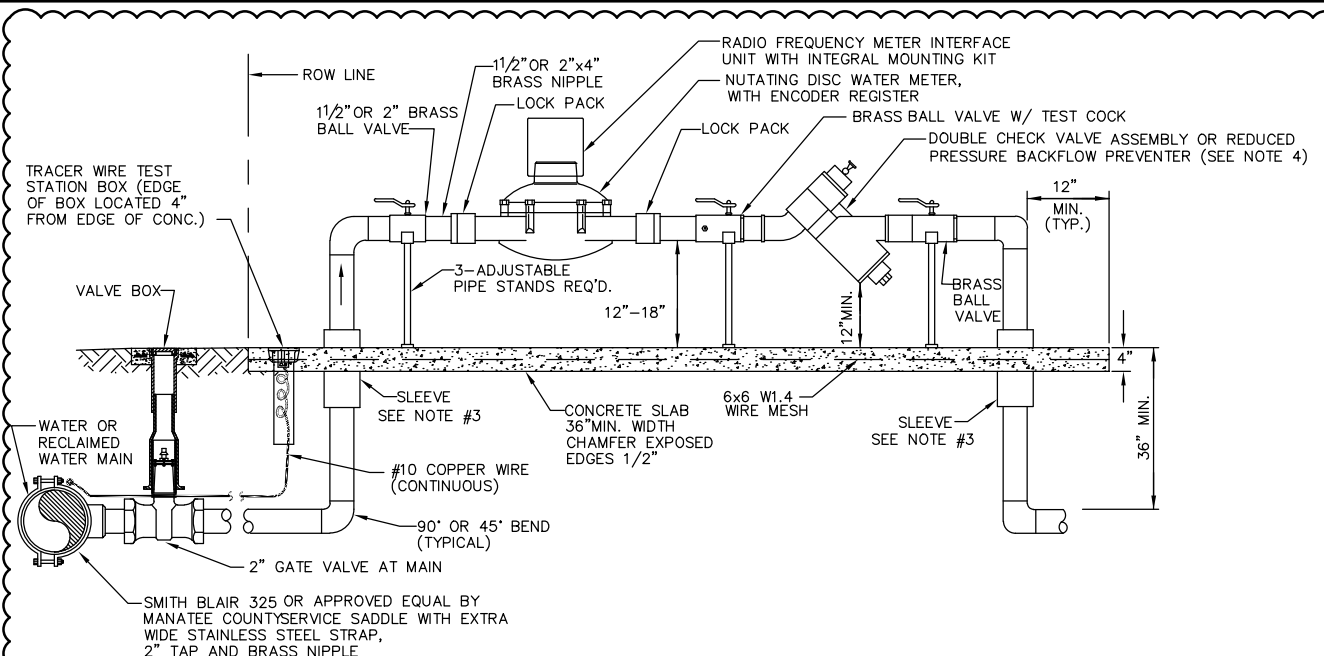
MANATEE COUNTY
**CLEARVIEW MANOR
WATERLINE IMPROVEMENTS**

**SITE PLAN
27TH ST W**
SCALE: 1" = 20'

COPYRIGHT ©
MALCOLM PIRNIE, INC.
DATE MARCH 2010
C12 SHEET ____ OF ____
CAD REF. NO. _____

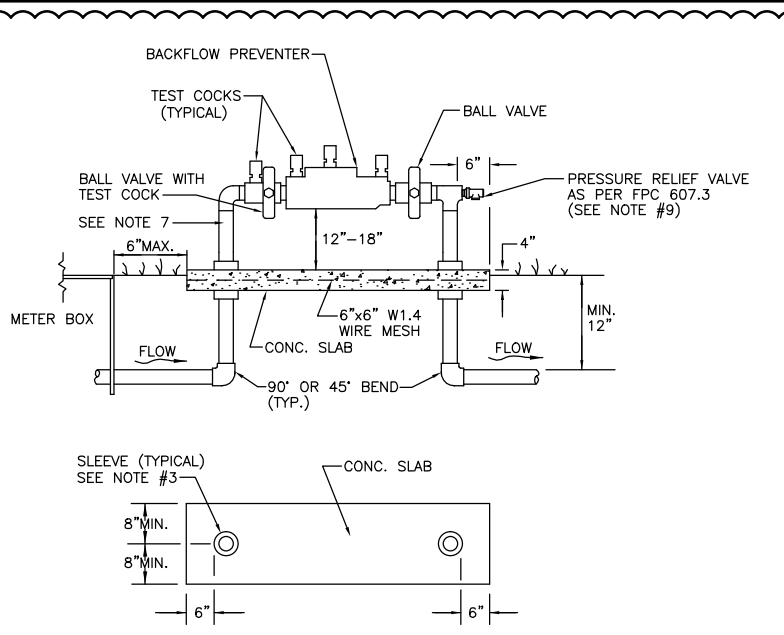
XREFS: 2006 aerial.dwg \site plan.dwg IMAGES:None User:CORNEJO Spec:PIRNIE STANDARD Title:\CAD\PROJ\0132 - Manatee County\0132005-Clearview Manor\SITE PLAN 2.DWG Scale:1:1 Date:05/14/2009 Time:09:56 Layout:C1 (2)

XREFS: ... \Xref\0132005-TB.dwg IMAGES: None
 User: CORNEJO Spec: PIRNIE STANDARD File: I:\ACAD\PROJ\0132 - Manatee County\0132005-Clearview Manor\Design\0132005-GD7.DWG Scale: 1:1 Date: 06/15/2010 Time: 14:55 Layout: CD7



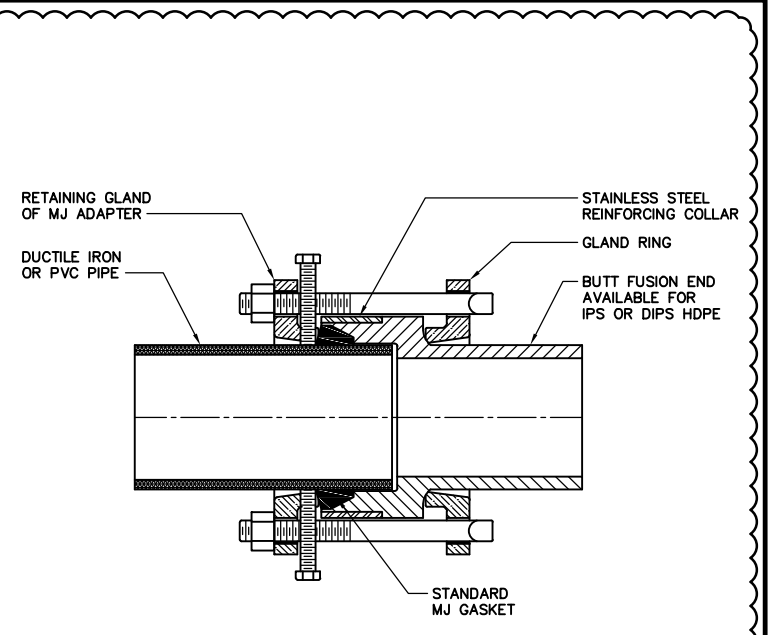
- NOTES:**
1. BACKFLOW DEVICE MUST BE INSTALLED DOWNSTREAM OF METER, AS CLOSE TO METER AS POSSIBLE.
 2. COPPER PIPE TYPE "K" OR BRASS PIPE MINIMUM SCHEDULE 40 SHALL BE USED TO A MINIMUM DEPTH OF 36" BELOW GRADE.
 3. PIPES PASSING THROUGH OR ENCASED IN CONCRETE MUST BE PROPERLY PROTECTED AND SLEEVED.
 4. THE SYSTEM MUST MEET ALL REQUIREMENTS OF THE FLORIDA PLUMBING CODE (LATEST EDITION) AND THE MANATEE COUNTY BACKFLOW PREVENTION ORDINANCE (LATEST EDITION).
 5. METER, LOCK PACKS AND BRASS NIPPLES WILL BE PROVIDED BY M.C.F.M.D. INSERT NIPPLES INTO LOCK PACKS HALF WAY.
 6. DO NOT PAINT METER OR LOCK PACKS. ALL ABOVE GROUND PIPING SHALL BE PAINTED BLUE (POTABLE WATER) OR PANTONE PURPLE 522C (RECLAIMED WATER).
 7. FOR USE WHERE BACKFLOW PREVENTER IS REQUIRED WITH METER.
 8. 3' MINIMUM CLEARANCE FROM LANDSCAPING PLANTS TO EDGE OF THE METER AND CLEAR OPENING FOR ACCESS FROM STREET.
 9. BACKFLOW PREVENTER IS ONLY REQUIRED ON RECLAIMED WATER LINE WHEN IRRIGATION SYSTEM INCLUDES CHEMICAL OR FERTILIZER INJECTION METHODS. WHEN BACKFLOW PREVENTION ASSEMBLY IS NOT REQUIRED, A 12" MINIMUM NIPPLE AND A BALL VALVE SHALL BE INSTALLED.
 10. ALL BOLTING SHALL BE 316 STAINLESS STEEL.
 11. SEE GATE VALVE, BOX AND LID STANDARD DETAIL UW-2. CENTERING COLLAR NOT REQUIRED ON 2" OR SMALLER VALVES.

UW-13 1 1/2" & 2" METER AND BACKFLOW PREVENTER



- NOTES:**
1. BACKFLOW DEVICE MUST BE INSTALLED IMMEDIATELY DOWNSTREAM OF METER, AS SHOWN ABOVE.
 2. COPPER PIPE TYPE "K" OR BRASS PIPE MINIMUM SCHEDULE 40 SHALL BE USED TO A MINIMUM DEPTH OF 12" BELOW GRADE.
 3. PIPES PASSING THROUGH OR ENCASED IN CONCRETE MUST BE PROPERLY PROTECTED AND SLEEVED.
 4. THE SYSTEM MUST MEET ALL REQUIREMENTS OF THE FLORIDA PLUMBING CODE (LATEST EDITION) AND THE MANATEE COUNTY BACKFLOW PREVENTION ORDINANCE (LATEST EDITION).
 5. ALL EXPOSED EDGES OF CONCRETE SHALL BE CHAMFERED 1/2".
 6. BACKFLOW PREVENTER SHALL BE TESTED AT THE TIME OF INSTALLATION.
 7. PRESSURE REDUCING VALVE REQUIRED UPSTREAM OF BACKFLOW IF SYSTEM PRESSURE EXCEEDS 80 PSI.
 8. 3' MINIMUM CLEARANCE FROM LANDSCAPING PLANTS TO EDGE OF CONCRETE SLAB AND CLEAR OPENING FOR ACCESS FROM STREET.
 9. IN ADDITION TO THE PRV, THE BUILDING DEPT. MAY REQUIRE AN APPROVED DEVICE FOR THERMAL EXPANSION CONTROL.
 10. REFER TO STANDARD DETAIL US-15 FOR LIFT STATIONS.

UW-12 3/4" & 1" BACKFLOW PREVENTER



IPS & DIPS BELL MJ ADAPTER WITH KIT CONNECTS HDPE TO PLAIN END DUCTILE IRON OR PVC



BID SET

MALCOLM PIRNIE
 CERTIFICATE OF AUTHORIZATION NO. 67
 INDEPENDENT ENVIRONMENTAL ENGINEERS,
 SCIENTISTS & CONSULTANTS
 2301 MAITLAND CENTER PARKWAY
 MAITLAND, FLORIDA 32751

REVISIONS			
NO.	BY	DATE	REMARKS
1	VAH	06/15/10	ADDENDUM NO.1

DES SC
 DWN SC
 CKD VAH



MANATEE COUNTY
**CLEARVIEW MANOR
 WATERLINE IMPROVEMENTS**

CIVIL DETAILS 2

NO SCALE

COPYRIGHT ©
 MALCOLM PIRNIE, INC.
 DATE MARCH 2010
 CD7 SHEET ____ OF ____
 CAD REF. NO. _____