

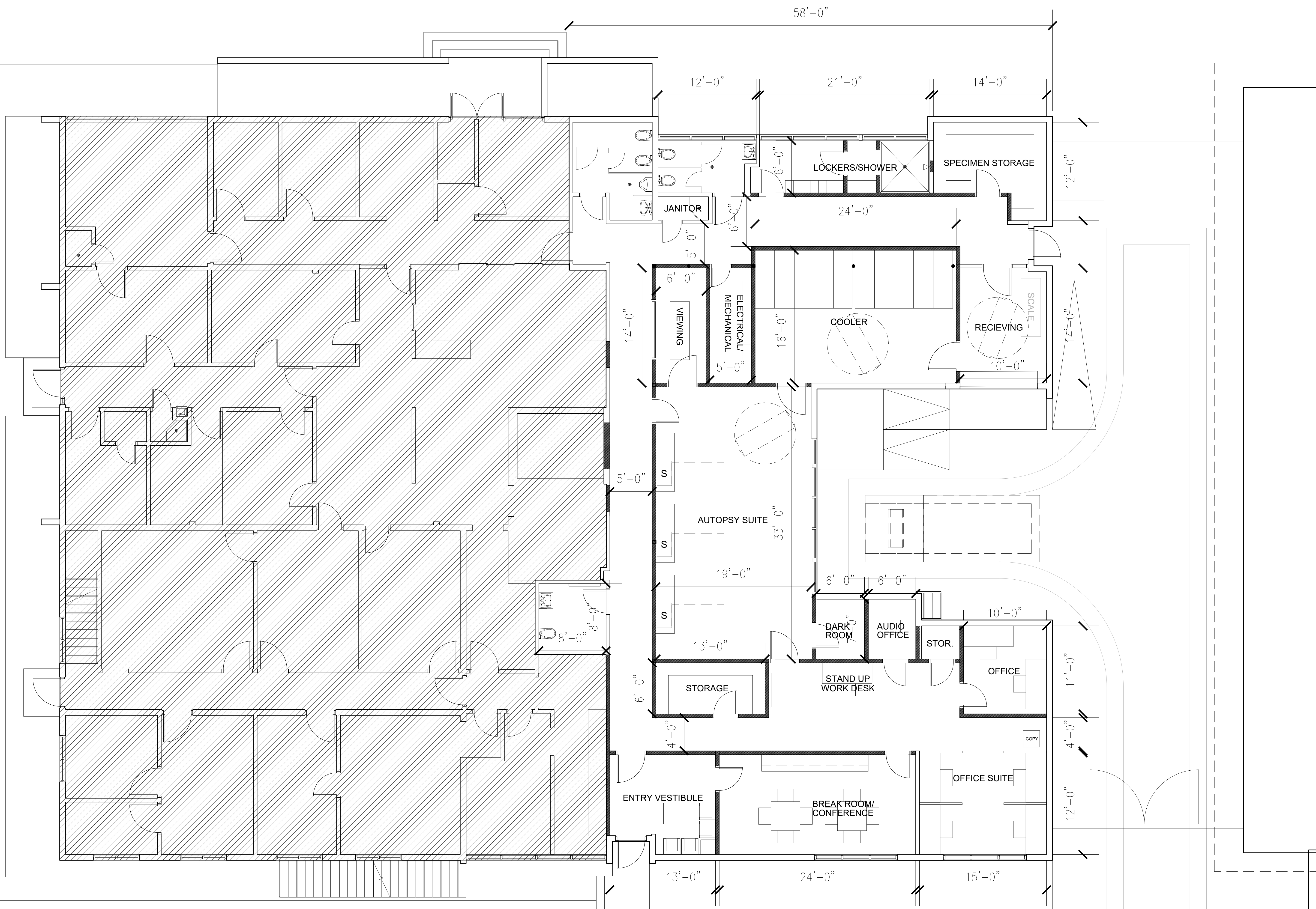
HALL ARCHITECTS, PA

AA20000923
513 CENTRAL AVENUE, SARASOTA, FL
3 4 2 3 6
941.917.0883 phone 941.917.0889 fax

MEP ENGINEER:
ATP ENGINEERING
SOUTH, FL

5227 OFFICE PARK BLVD.
BRADENTON, FL 34203

941.751.6485 phone



SEAL

GREGORY HALL, AIA ARO012900
ARCHITECT OF RECORD

GENERAL NOTES:
THESE DOCUMENTS ARE PRIMARILY CONCERNED WITH DESCRIBING THE PROJECT'S DESIGN INTENT. THE ARCHITECT IS THE PARTY RESPONSIBLE FOR ESTABLISHING AND MAINTAINING THE PROJECT'S DESIGN DIRECTION. FORWARD ANY QUESTIONS RELATED TO THESE MATTERS TO THE ARCHITECT WHENEVER THEY ARISE. THESE DOCUMENTS ARE NOT INTENDED TO DESCRIBE THE MEANS OR METHODS OF CONSTRUCTION. THOSE MATTERS REMAIN THE RESPONSIBILITY OF THE CONTRACTOR.
EXHAUSTIVE RECONNAISSANCE WAS NOT CONDUCTED AT THE PROJECT SITE PRIOR TO CONSTRUCTION. UNDISCOVERED FIELD CONDITIONS MAY EXIST. THE CONTRACTOR IS RESPONSIBLE FOR NOTIFYING THE ARCHITECT OF ANY DISCREPANCIES BETWEEN THESE DOCUMENTS AND ACTUAL FIELD CONDITIONS BEFORE PROCEEDING WITH THE WORK.
DO NOT SCALE DIMENSIONS FROM THESE DRAWINGS. WHEN INFORMATION IS NOT CLEARLY PROVIDED, OBTAIN EXACT INFORMATION FROM THE ARCHITECT BEFORE PROCEEDING WITH THE WORK.
THE ARCHITECT IS NOT RESPONSIBLE FOR CONSTRUCTION THAT IS NOT CARRIED OUT IN ACCORDANCE WITH THESE CONSTRUCTION DOCUMENTS. THE ARCHITECT IS NOT RESPONSIBLE FOR DECISIONS AND INTERPRETATIONS MADE BY THE CONTRACTOR, OWNER OR OTHER PARTIES.
© COPYRIGHT 2015 HALL ARCHITECTS, PA. DRAWINGS AND CONCEPTS MAY NOT BE USED OR REPRODUCED WITHOUT THE WRITTEN PERMISSION OF THE ARCHITECT.

| | | |
|-------|------------|---------|
| DATE: | xx/xx/xxxx | xxxxxxx |
| | | |
| | | |
| | | |

PROJECT NAME:
MANATEE COUNTY MORGUE RELOCATION
202 6TH AVENUE EAST
BRADENTON, FLORIDA 34208

SHEET TITLE
MED. EXAM OFFICE PLAN

SCALE: 3/16" = 1'
SHEET NUMBER

A2.0

NEW WALLS
PLUMBING FIXTURE COUNT:
6 TOILETS(1 ADA)
3 SINKS