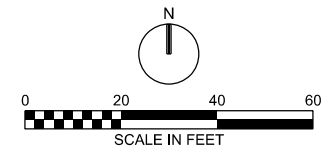
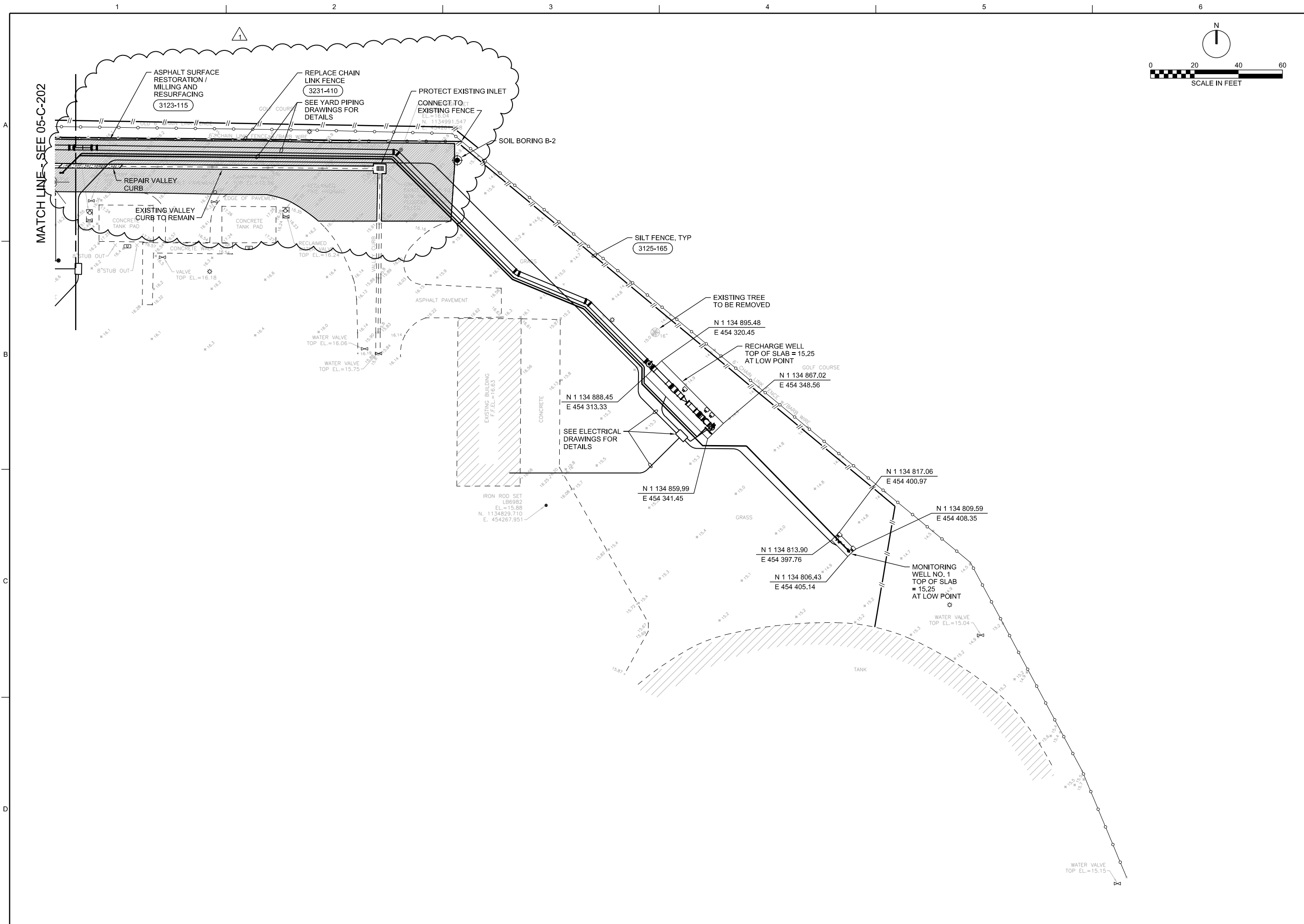


- NOTES:**
1. REMOVE AND STORE EXISTING STAIR ASSEMBLY FOR RE-USE. DEMOLISH EXISTING CONCRETE LANDING. AFTER PIPE INSTALLATION IS COMPLETE, PLACE NEW CONCRETE EQUIPMENT PAD TYPE "G" PER STANDARD DETAIL 0330-056 AND RE-INSTALL STAIR ASSEMBLY IN ORIGINAL CONFIGURATION, INCLUDING NEW CONCRETE ADHESIVE ANCHORS AND NON-SHRINK GROUT FOR SECURING STAIR SYSTEM.
 2. DEMOLISH EXISTING CONCRETE SIDEWALK FOR RELOCATION OF TWO FOUNDATION DRAIN CONNECTIONS. REPAIR DEMOLISHED SIDEWALK.

CH2MHILL CIVIL ENLARGED SITE PLAN		3011 S.W. WILLISTON ROAD GAINESVILLE, FLORIDA 32608 EB0000072 AAC001982 Richard Thomas Morrison PE 67713	
SOUTHWEST REGIONAL WATER RECLAMATION FACILITY - RECHARGE WELL SYSTEM MANATEE COUNTY UTILITIES MANATEE COUNTY, FLORIDA		R. MORRISON C. CHILDRESS A. MALONE R. MORRISON	
DATE	DECEMBER 2015	NO.	1
PROJ	659297	ADDENDUM	1
DWG	005-C-202	REVISION	
SHEET	14 of 51	CHK	
		DR	
		APVD	
		BY	
		NP	

VERIFY SCALE	
BAR IS ONE INCH ON ORIGINAL DRAWING.	
DATE	DECEMBER 2015
PROJ	659297
DWG	005-C-202
SHEET	14 of 51

100% DESIGN DOCUMENTS



MATCH LINE - SEE 05-C-202

CH2MHILL®

CIVIL
 ENLARGED
 SITE PLAN

3011 S.W. WILLISTON ROAD
 GAINESVILLE, FLORIDA 32608
 EB0000072 AAC001982

Richard Thomas Morrison PE 67713

SOUTHWEST REGIONAL WATER RECLAMATION
 FACILITY - RECHARGE WELL SYSTEM
 MANATEE COUNTY UTILITIES
 MANATEE COUNTY, FLORIDA

NO.	DATE	DSCR	DR	CHK	APVD
1	15/03/2016	ADDENDUM 1	R MORRISON	C CHILDRESS	A MALONE
				BY	APVD
				RM	NP
					R MORRISON

VERIFY SCALE
 BAR IS ONE INCH ON ORIGINAL DRAWING.

DATE DECEMBER 2015
 PROJ 659297
 DWG 005-C-203
 SHEET 15 of 51

FILENAME: 005-C-2003_659297.dgn

PLOT DATE: 2016/03/16

PLOT TIME: 10:25:46 AM

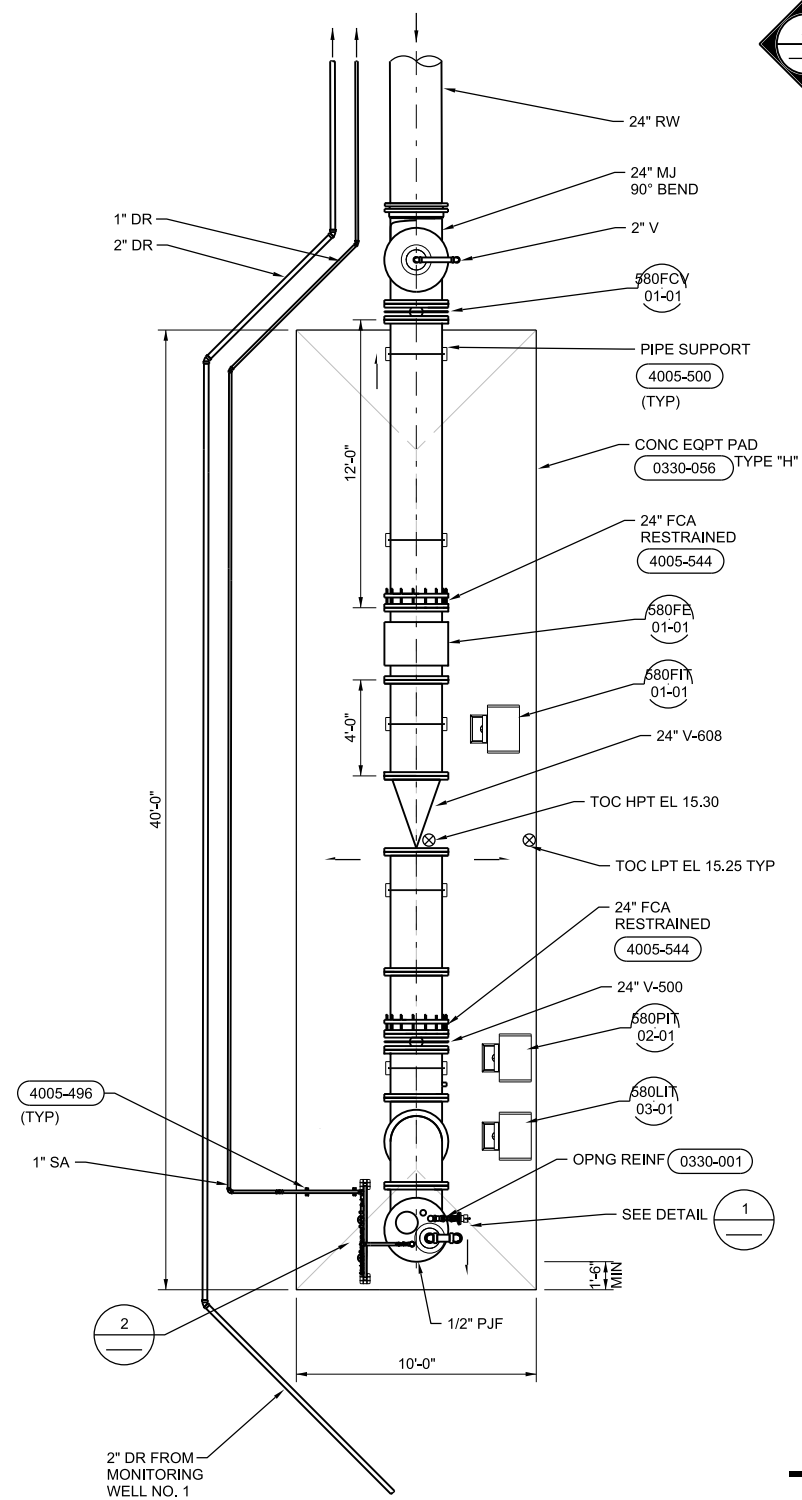
REUSE OF DOCUMENTS: THIS DOCUMENT AND THE IDEAS AND DESIGNS INCORPORATED HEREIN, AS AN INSTRUMENT OF PROFESSIONAL SERVICE, IS THE PROPERTY OF CH2M HILL AND IS NOT TO BE USED, IN WHOLE OR IN PART, FOR ANY OTHER PROJECT WITHOUT THE WRITTEN AUTHORIZATION OF CH2M HILL.

©CH2M HILL 2015. ALL RIGHTS RESERVED.

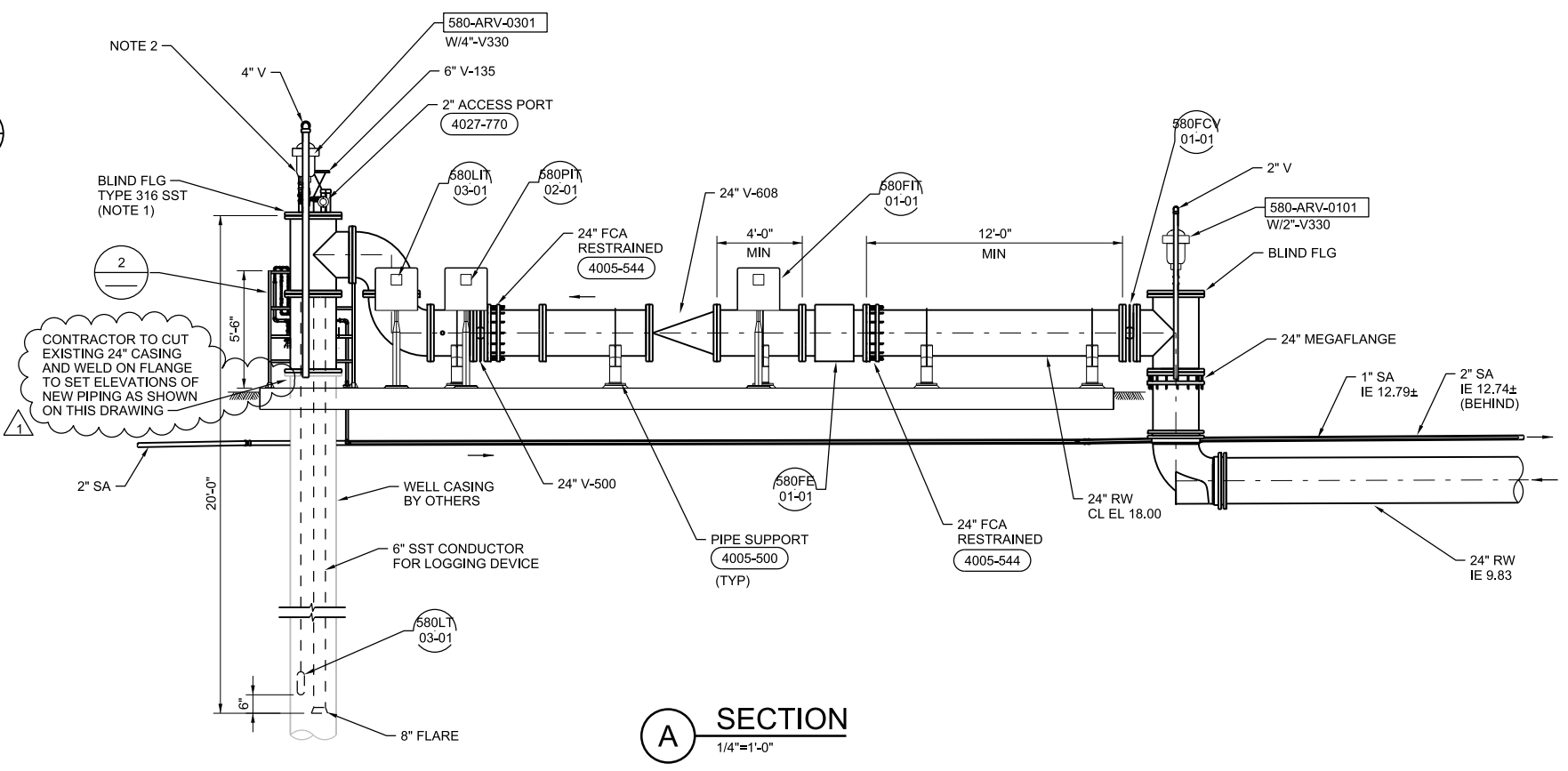
100% DESIGN DOCUMENTS

1 2 3 4 5 6

A
B
C
D



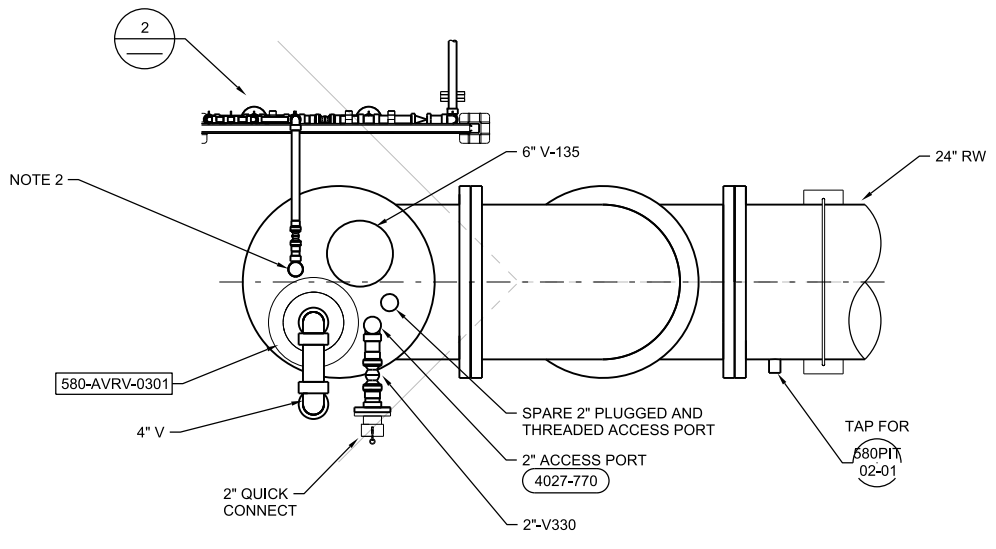
ENLARGED PLAN VIEW
1/4"=1'-0"



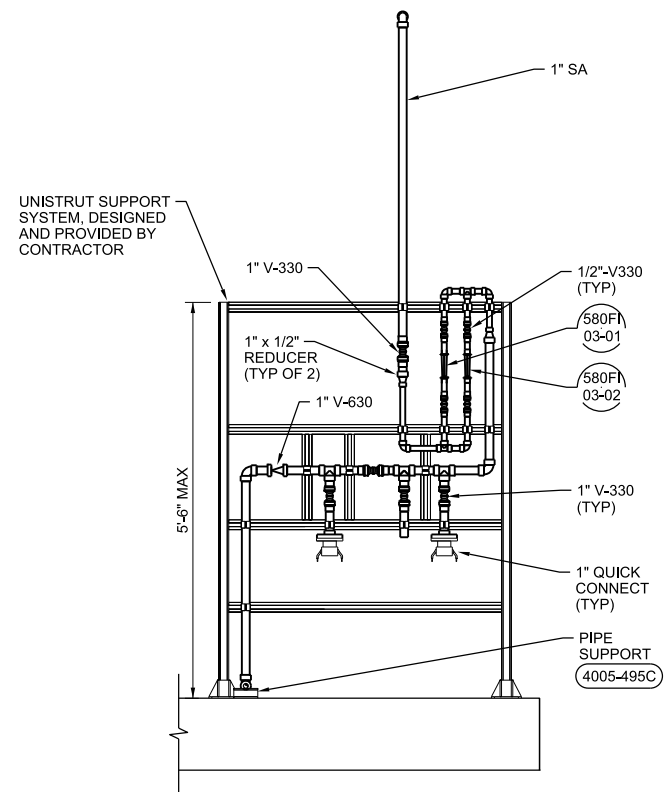
SECTION A
1/4"=1'-0"

- NOTES:**
1. WELL HEAD BLIND FLANGE SHALL BE TYPE 316 SST. WELD 6" SCHEDULE 10 TYPE 316 SST PIPE TO BLIND FLANGE FOR LOGGING. WELD 4" SCHEDULE 10 TYPE 316 SST PIPE FOR VENT CONNECTION.
 2. FOR WELL HEAD CONNECTION OF LEVEL TRANSMITTER.

- GENERAL NOTES:**
1. SEE P&ID DRAWINGS FOR INSTRUMENT AND CONTROL INSTALLATION DETAILS.



1
3/4"=1'-0"



2
3/4"=1'-0"

NO.	DATE	REVISION	BY	APVD	T.F.U.
1	29/03/2016	INFORMATIONAL UPDATE	LF	TF	TFU

3011 S.W. WILLISTON ROAD
GAINESVILLE, FLORIDA 32608
EB0000072 AAC001982
Tao Fu PE 63138

SOUTHWEST REGIONAL WATER RECLAMATION
FACILITY - RECHARGE WELL SYSTEM
MANATEE COUNTY UTILITIES
MANATEE COUNTY, FLORIDA

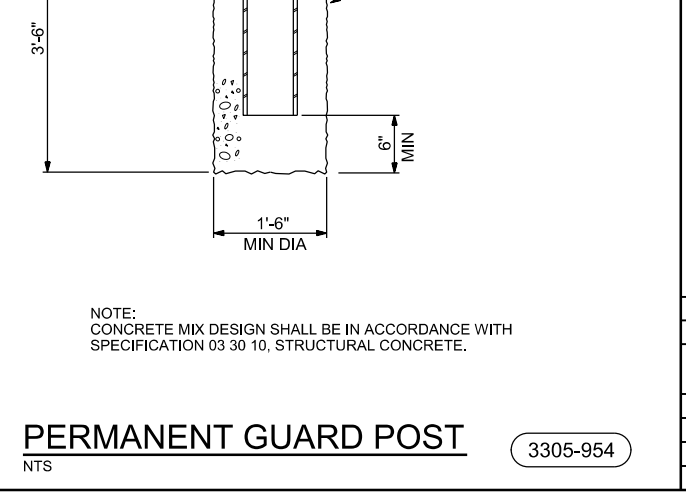
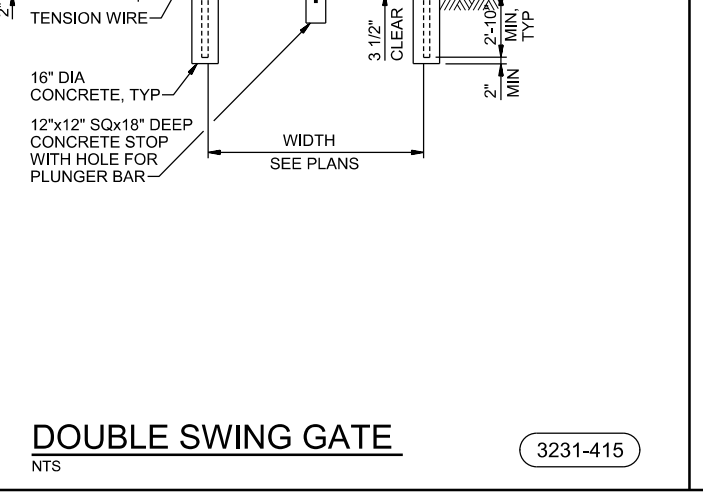
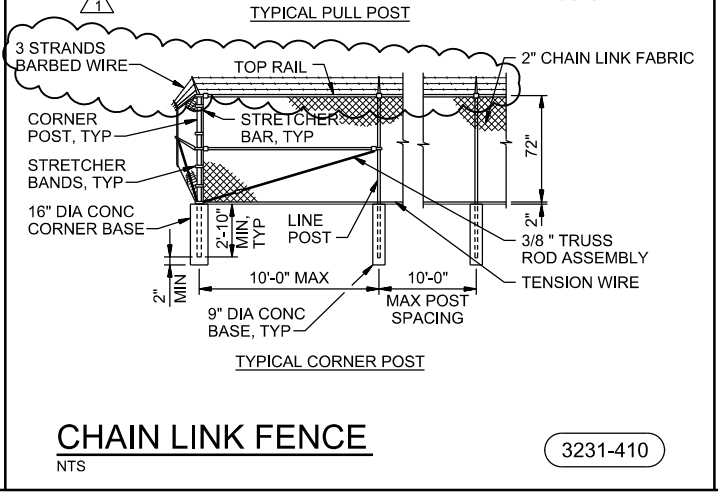
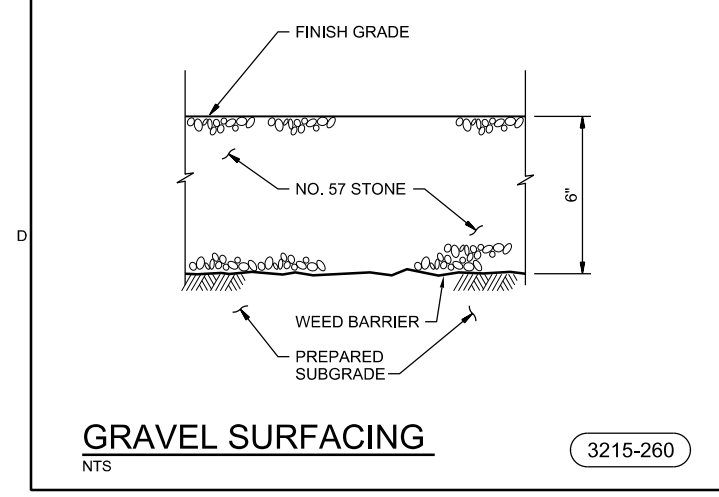
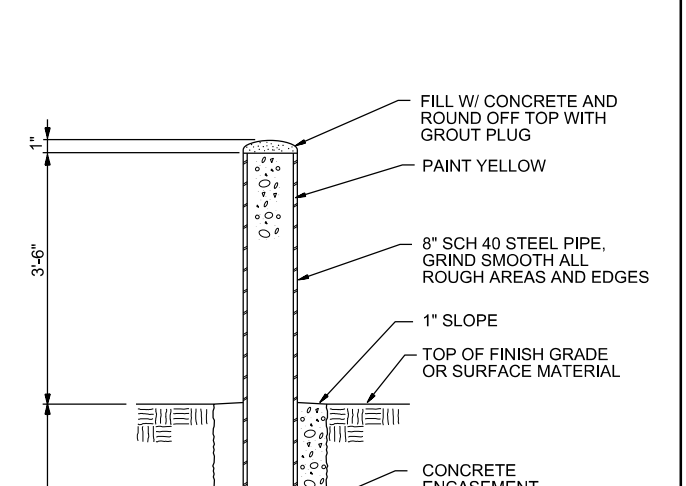
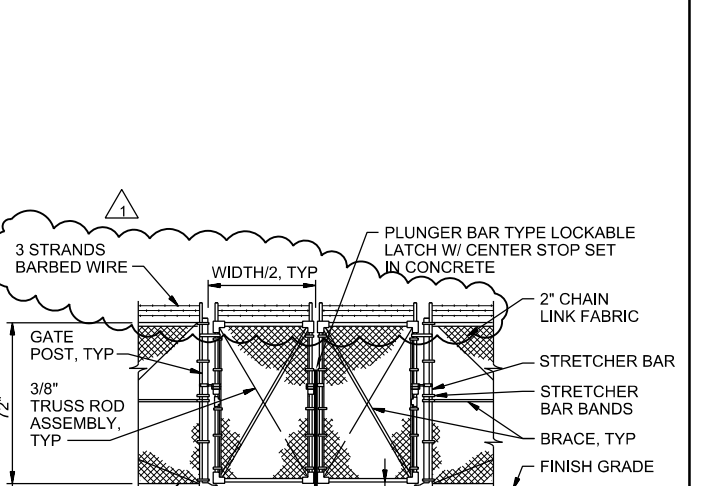
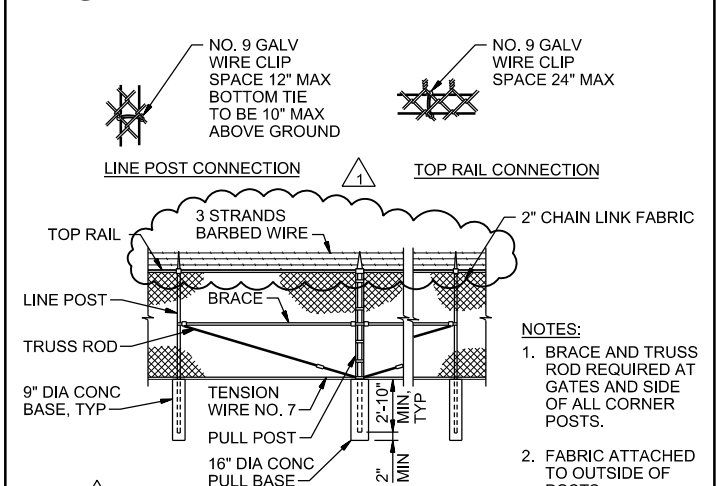
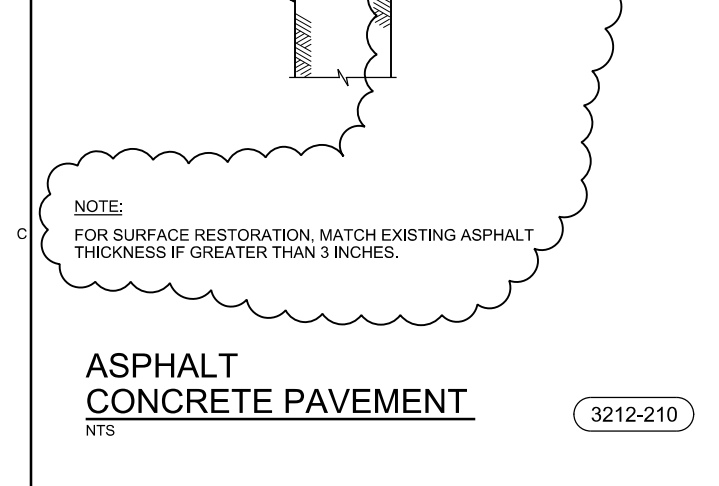
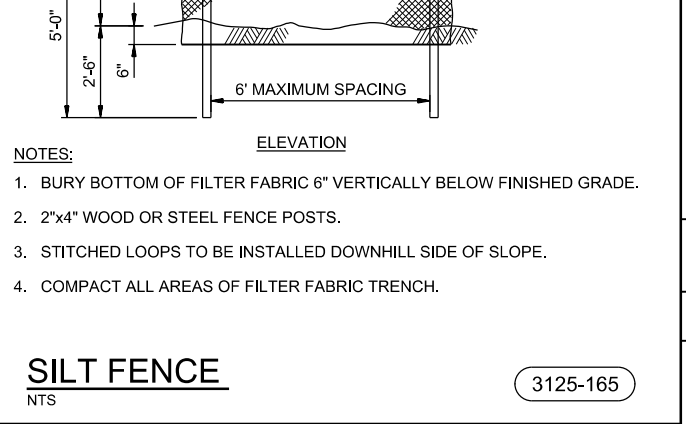
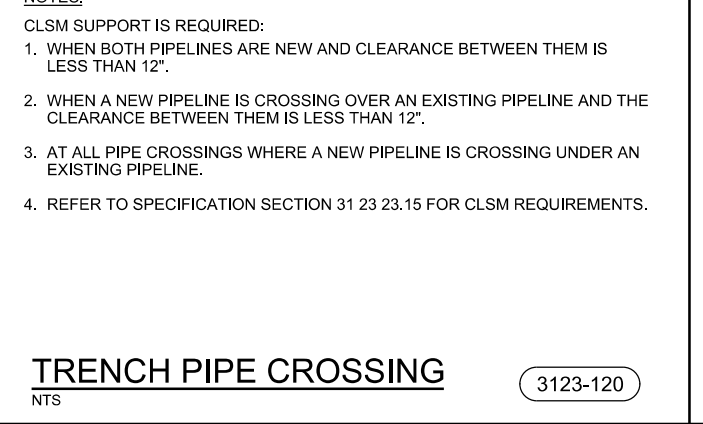
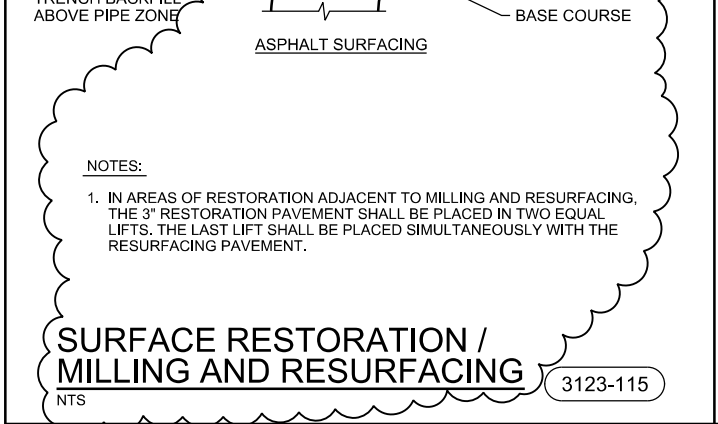
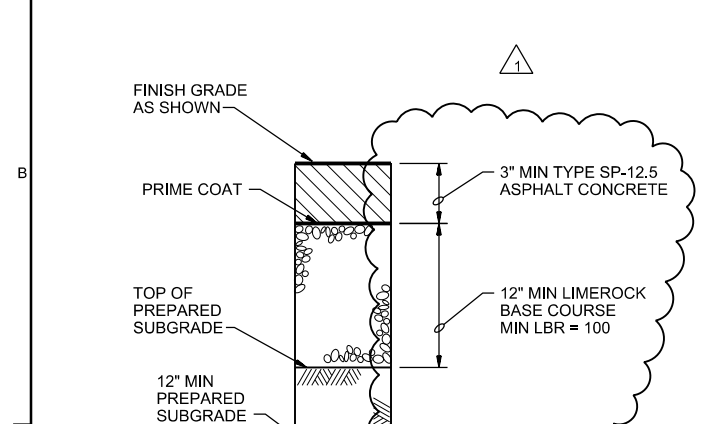
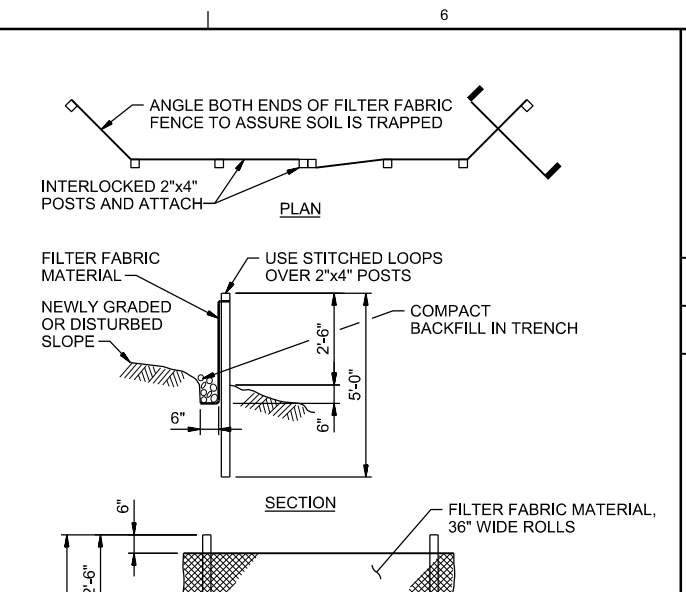
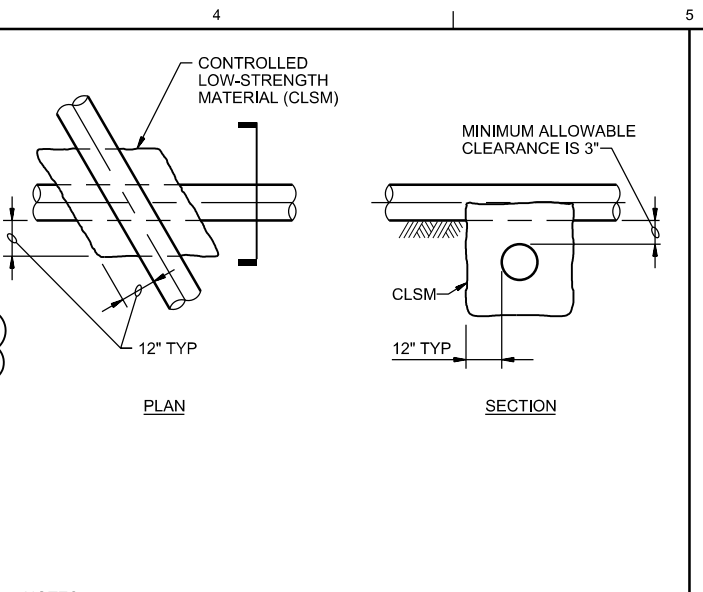
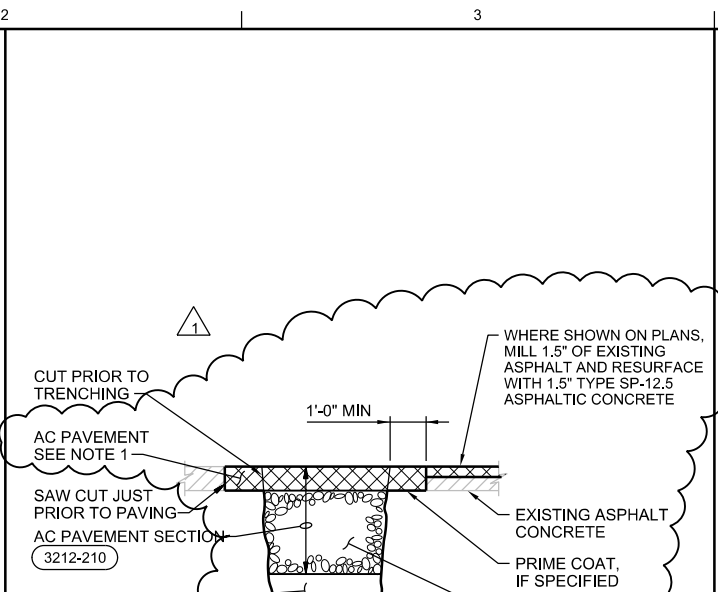
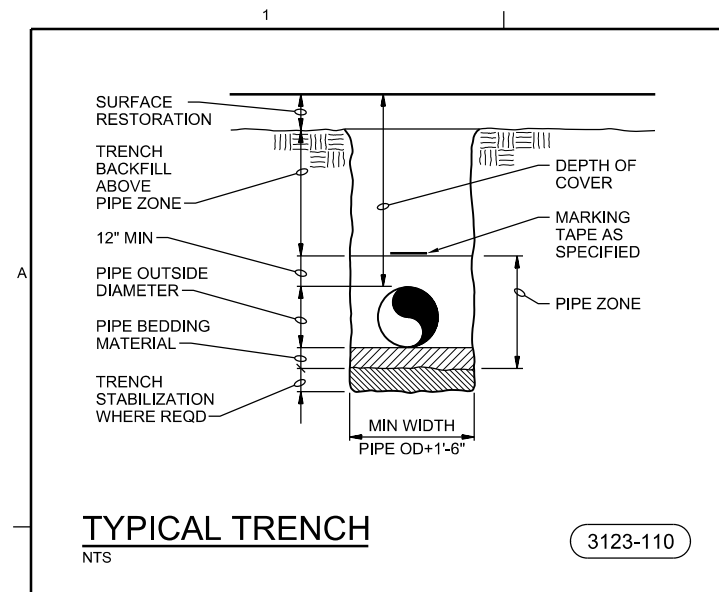
CH2MHILL®

YARD PIPING
**RECHARGE WELL
ENLARGED PLAN**

VERIFY SCALE	DATE	DECEMBER 2015
BAR IS ONE INCH ON ORIGINAL DRAWING.	PROJ	659297
	DWG	005-Y-204
	SHEET	20 of 51

100% DESIGN DOCUMENTS

REUSE OF DOCUMENTS: THIS DOCUMENT AND THE IDEAS AND DESIGNS INCORPORATED HEREIN AS AN INSTRUMENT OF PROFESSIONAL SERVICE, IS THE PROPERTY OF CH2M HILL AND IS NOT TO BE USED, IN WHOLE OR IN PART, FOR ANY OTHER PROJECT WITHOUT THE WRITTEN AUTHORIZATION OF CH2M HILL. ©CH2M HILL 2015. ALL RIGHTS RESERVED.



3011 S.W. WILLISTON ROAD GAINESVILLE, FLORIDA 32608 EB0000072 AAC001982		Richard Thomas Morrison PE 67713	
SOUTHWEST REGIONAL WATER RECLAMATION FACILITY - RECHARGE WELL SYSTEM MANATEE COUNTY UTILITIES MANATEE COUNTY, FLORIDA		C CHILDRESS A MALONE R MORRISON	
NO.	DATE	REVISION	CHK
1	15/03/2016	ADDENDUM 1	
DR		APVD	
DGSN		APVD	
NO.		BY	
1		RM	
DATE		APVD	
15/03/2016		RM	
ADDENDUM 1		BY	
		APVD	
		R MORRISON	

VERIFY SCALE
BAR IS ONE INCH ON ORIGINAL DRAWING.
0 1"

DATE DECEMBER 2015
PROJ 659297
DWG 950-C-501
SHEET 37 of 51

FILENAME: 950-C-5001_659297.dgn PLOT DATE: 2016/03/16 PLOT TIME: 10:47:46 AM

100% DESIGN DOCUMENTS

REUSE OF DOCUMENTS: THIS DOCUMENT AND THE IDEAS AND DESIGNS INCORPORATED HEREIN, AS AN INSTRUMENT OF PROFESSIONAL SERVICE, IS THE PROPERTY OF CH2M HILL AND IS NOT TO BE USED, IN WHOLE OR IN PART, FOR ANY OTHER PROJECT WITHOUT THE WRITTEN AUTHORIZATION OF CH2M HILL.

©CH2M HILL 2015. ALL RIGHTS RESERVED.