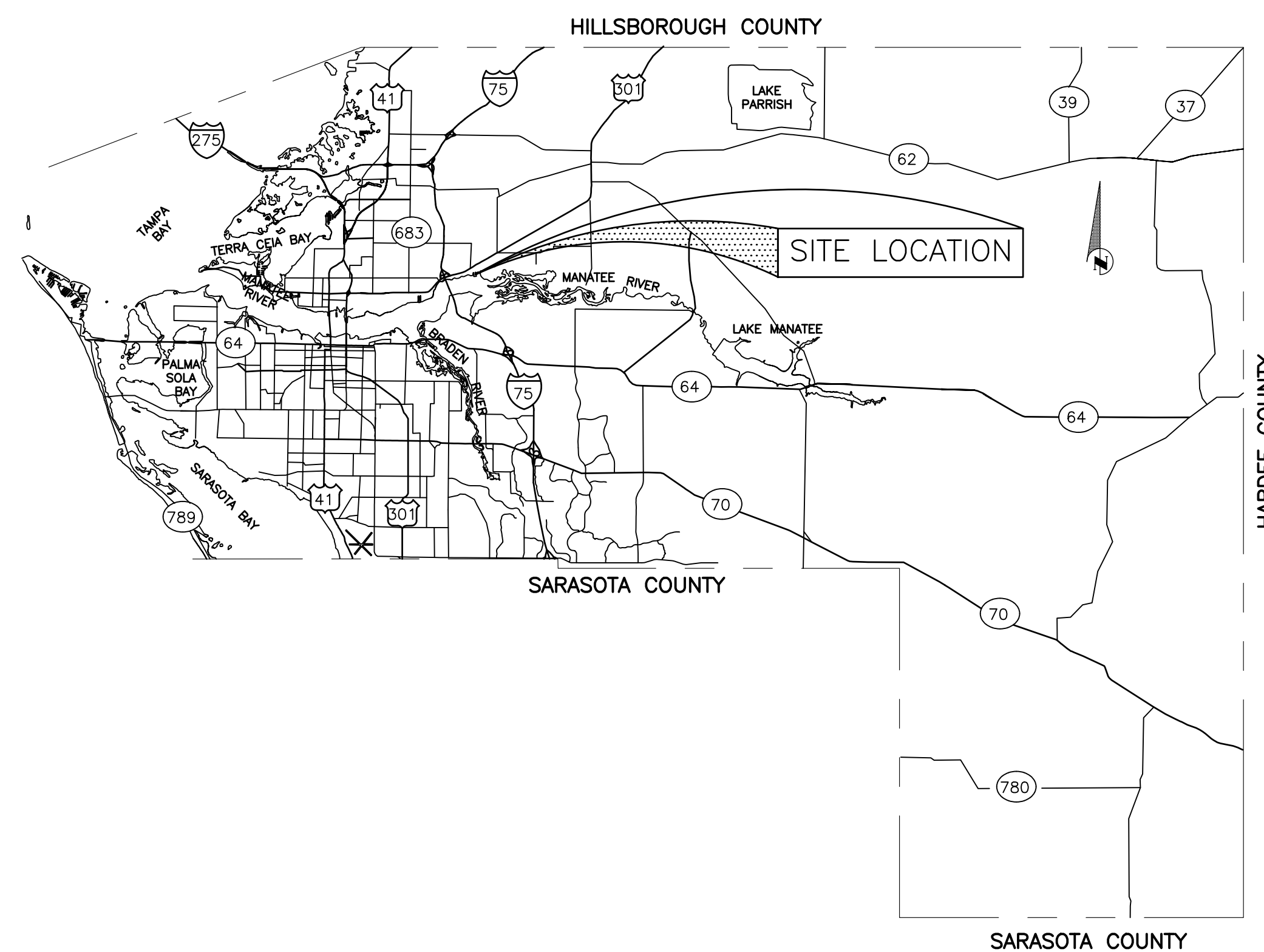


JUNE 2015



REHABILITATION OF THE EXISTING GRAVITY SEWER MAINS BY INSTALLING APPROXIMATELY 9,380 LF OF 8" HDPE (DR-17) PIPE TO REPLACE THE EXISTING VITRIFIED CLAY PIPE (VCP) UTILIZING PIPE BURSTING INSTALLATION METHODS. ALL EXISTING BRICK AND/OR CONCRETE MANHOLES SHALL BE REHABILITATED AND LINED, APPROXIMATELY 33 MANHOLES. ALL SERVICES SHALL BE REINSTATED USING INSERT-A-TEE (OR EQUIVALENT) AND SHALL BE RELOCATED OUT FROM UNDER THE MOBILE HOMES AS NECESSARY.



NO.	INDEX OF SHEETS
1.	COVER SHEET
2.	GENERAL NOTES & LEGEND
3.-7.	PLAN SHEETS
8.	EROSION CONTROL
9.	DETAILS & PROJECT NOTES

COLONY COVE 1 - PHASE 2 SANITARY SEWER (GRAVITY) REHABILITATION COVER SHEET

NO.	REVISION DESCRIPTION	BY	DATE

PROJECT #	413-600568	
SURVEY #	-	
SEC./TWN./RGE	10/34S/18E	
SCALE	1"=40'	
	BY	DATE
SURVEYED	-	-
DESIGNED	JSS	5/201
DRAWN	CB/JSS	5/201
CHECKED	-	-

J. SHEA SHOUN, P.E.

FLO. JOHN P. SHOUN 23

LICENSE

No. 60923

STATE OF
6/24/15
FLORIDA

PROFESSIONAL ENGINEER

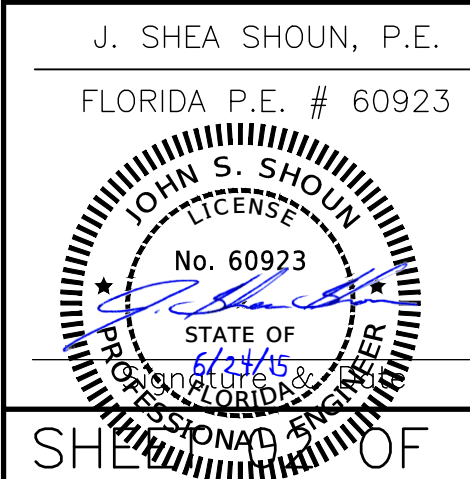
Signature: _____ Date: _____

Know what's below
Call before you dig

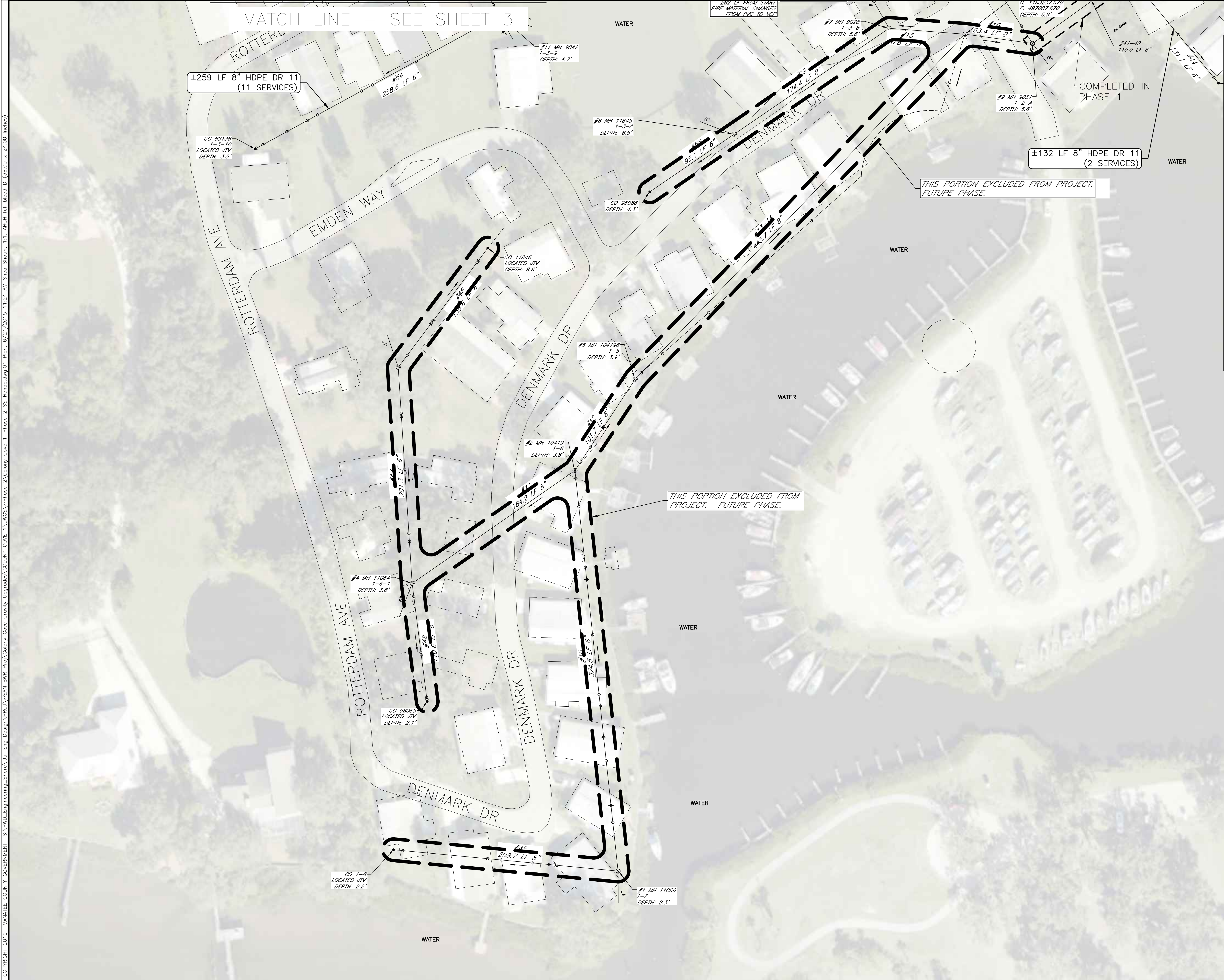
59. THE CONTRACTOR, PRIOR TO ANY TEMPORARY WATER SHUT-OFFS DURING WATER MAIN TIE-IN, ETC., SHALL NOTIFY THE AFFECTED RESIDENTS BY POSTING INFORMATIONAL SIGNS IN THE NEIGHBORHOOD AT LEAST TWO DAYS (48 HRS) PRIOR TO THE WATER SHUT-OFF. REFERENCE SECTION 01580, PARAGRAPH 1.03 OF THE SPECIFICATIONS. WHEN FEASIBLE, "DOOR HANGERS" SHALL BE DELIVERED TO AFFECTED RESIDENCES AT LEAST TWO DAYS (48 HRS) PRIOR TO WATER SHUT-OFF. FOR LARGE PROJECTS WITH HUNDREDS OF HOMES AFFECTED, THE CONTRACTOR SHALL ALSO MAKE EXTENSIVE USE OF THE MEDIA AND SHALL HAVE PRIOR CONTACT WITH HOMEOWNER'S ASSOCIATIONS. WRITTEN NOTIFICATIONS SHALL ALSO BE FAXED TO THE TAMPA TRIBUNE, BRADENTON HERALD, SARASOTA HERALD TRIBUNE, WBRD RADIO, EMERGENCY COMMUNITY CENTERS, INSPECTIONS, WATER TREATMENT PLANT, WATER MANAGER, HELPLINE, CUSTOMER SERVICE, AND THE MANATEE COUNTY UTILITY OPERATIONS DEPARTMENT.
60. ALL NEW PIPE LINES SHALL BE PIG CLEANED (4" AND LARGER), FLUSHED, PRESSURE TESTED, DISINFECTED AND CERTIFIED PRIOR TO TIE-INS TO EXISTING FACILITIES. THE CONTRACTOR WILL BE ALLOWED TO USE TEMPORARY PLUGS FOR PIG CLEANING AND PRESSURE TESTING.
61. ALL TEST POINT PIPING SHALL BE CUT LOOSE FROM THE CORPORATION STOP AND COMPLETELY REMOVED AND DISPOSED OF BY THE CONTRACTOR PRIOR TO FINAL ACCEPTANCE. A CORPORATION STOP PLUG SHALL BE INSTALLED AND THE CORPORATION STOP SHALL REMAIN IN PLACE.
62. ALL EXISTING MAINS THAT ARE BEING REPLACED SHALL BE ABANDONED IN PLACE UPON ACCEPTANCE AND ACTIVATION OF THE NEW MAINS. ABANDONED MAINS SHALL BE CUT, FILLED WITH GROUT, AND CAPPED. REFER TO SECTION 02064 OF THE SPECIFICATIONS FOR GROUTING OF ABANDONED PIPE.

- MANATEE COUNTY PUBLIC
WORKS DEPT./TRAFFIC
ENGINEERING/ ATMS
2101 47TH TERRACE EAST
BRADENTON, FL 34203
MICHAEL O'REILLY, P.E.
(941) 749-3500 EXT. 7859
FAX: (941) 749-3571
michael.oreilly@mymanatee.org

STA. 40+60, 17' LT.
1-6" GATE VALVE
1-6" FITTING



Copyright 2010 Manatee County Government | S:\PWD_Engineering_Shore\Util_Eng_Design\PROJ\SS-SAN SWR Proj\Colony Cove Gravity Upgrades\COLONY COVE 1\DWG\SS-Phase 2 SS Rehab.dwg,04 Plan, 6/24/2015 11:24 AM Shea Shoun, 1:1, ARCH full bleed D (36.00 x 24.00 inches)



NOTE:

FPL POWER LINE:
EXACT LOCATION OF FPL COMPANY UNDERGROUND FACILITIES (BE) MUST BE DETERMINED PRIOR TO ANY SUBSURFACE OPERATIONS IN THIS AREA. CALL 1-800-432-4770 FOR LOCATIONS OF FPL COMPANY UNDERGROUND FACILITIES BEFORE DIGGING.

VERIZON:
EXACT LOCATION OF THE VERIZON UNDERGROUND FACILITIES (BVER) ARE UNKNOWN. THE FACILITIES MOSTLY FOLLOW THE REAR LOT LINE ARCHITECTURE.

BRIGHT HOUSE:
EXACT LOCATION OF THE BRIGHT HOUSE UNDERGROUND FACILITIES (BYER) ARE UNKNOWN. THE FACILITIES MOSTLY FOLLOW THE REAR LOT LINE ARCHITECTURE. CALL 1-800-432-4770 FOR LOCATIONS OF BRIGHT HOUSE UNDERGROUND FACILITIES BEFORE DIGGING.

LEGEND

UWOW ID. NO. FROM GIS	#30 IMH 96074
MANHOLE OR CLEAN-OUT	1-1-25
JTV INC., TV INSPECTION SHEET NO.	LOCATED JTV
PREV. JTV MANHOLE NO.	DEPTH: 9.0'
MANHOLE OR CLEAN-OUT DEPTH*	

DIRECTION OF TV INSPECTION

±LENGTH & DIAMETER

JTV INC., TV INSPECTION SETUP NO.

○ FACTORY TAP

◆ BREAK-IN TAP (HAMMER)

TV INSPECTION AND REPORT PRODUCED AND PREPARED BY JTV INC., JUNE 2012.

*CLEAN-OUT DEPTHS ARE ESTIMATION AND ARE NOT CONSIDERED ACCURATE.

811

Know what's below
Call before you dig

SHEET INDEX

(N.T.S.)

PUBLIC WORKS DEPARTMENT
ENGINEERING SERVICES
1022 26th Avenue East, Bradenton, FL 34208

COLONY COVE 1 - PHASE 2

SANITARY SEWER (GRAVITY) REHABILITATION

GRAVITY SEWER SYSTEM LAYOUT

NO.	REVISION DESCRIPTION	BY	DATE

PROJECT #	413-6005680		
SURVEY #	-		
SEC./TWN./RGE	10/34S/18E		
SCALE	1"=40'		
SURVEYED	-	DATE	-
DESIGNED	JSS	DATE	5/2015
DRAWN	CB/JSS	DATE	5/2015
CHECKED	-	DATE	-

J. SHEA SHOUN, P.E.

FLORIDA PROFESSIONAL ENGINEER
No. 60923
STATE OF FLORIDA
6/24/15

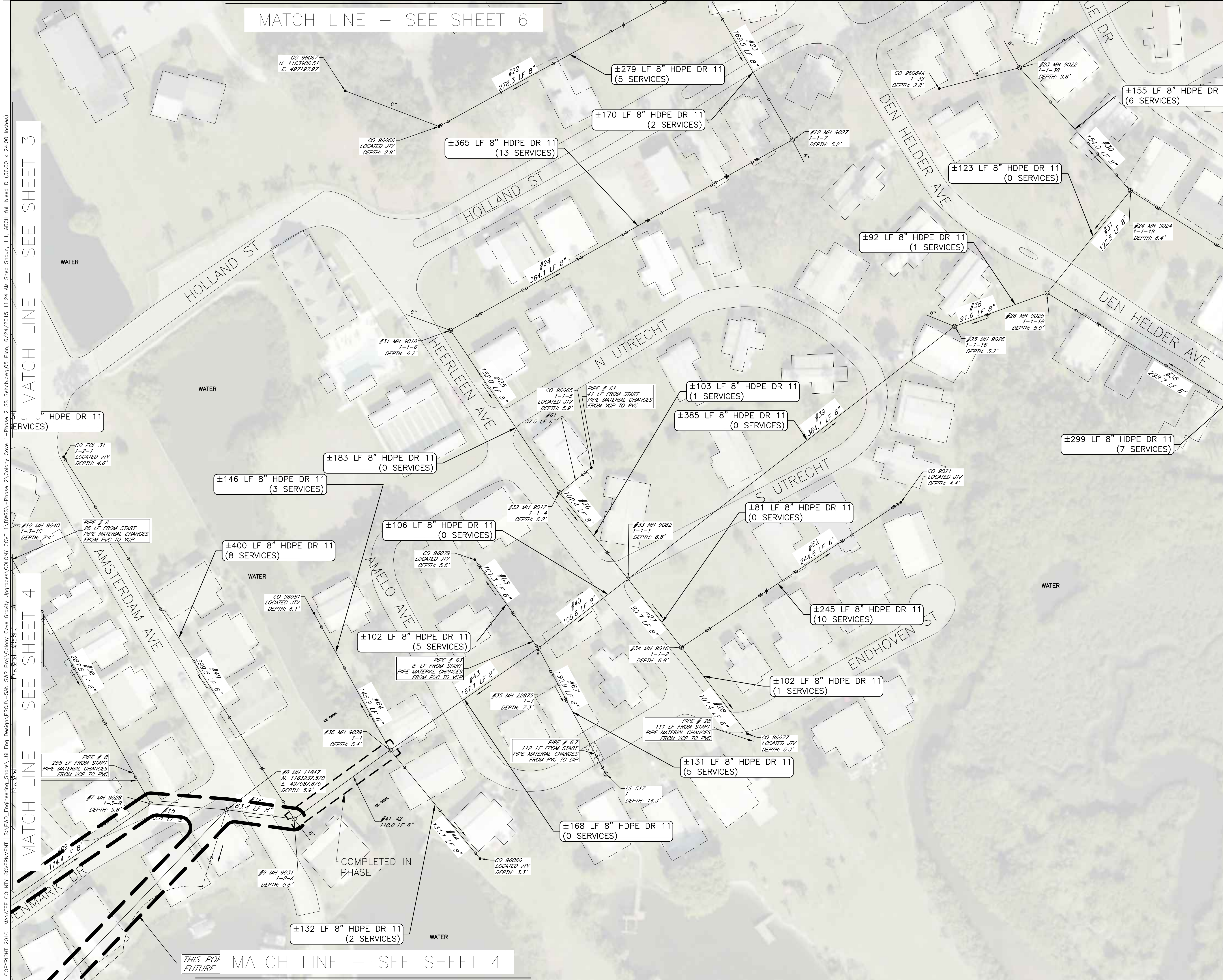
SHEET 04 OF 9

COPYRIGHT 2010 MANATEE COUNTY GOVERNMENT | S:\P\W\Engineering_Shore\Util Eng Design\PROJ\Colony Cove Gravity Upgrades\COLONY COVE 1\DWG\SS Rehab.dwg, 05 Plan, 6/24/2015 11:24 AM Shea Shoun, 1:1, ARCH full bleed D (36.00 x 24.00 inches)

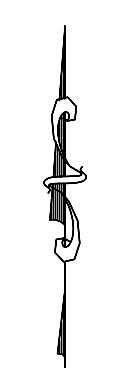
MATCH LINE - SEE SHEET 3

MATCH LINE - SEE SHEET 4

MATCH LINE - SEE SHEET 6



NOTE:
FPL POWER LINE:
EXACT LOCATION OF FPL COMPANY UNDERGROUND FACILITIES (BE) MUST BE DETERMINED PRIOR TO ANY SUBSURFACE OPERATIONS IN THIS AREA. CALL 1-800-432-4770 FOR LOCATIONS OF FPL COMPANY UNDERGROUND FACILITIES BEFORE DIGGING.
VERIZON:
EXACT LOCATION OF THE VERIZON UNDERGROUND FACILITIES (BVER) ARE UNKNOWN. THE FACILITIES MOSTLY FOLLOW THE REAR LOT LINE ARCHITECTURE.
BRIGHT HOUSE:
EXACT LOCATION OF THE BRIGHT HOUSE UNDERGROUND FACILITIES (BVER) ARE UNKNOWN. THE FACILITIES MOSTLY FOLLOW THE REAR LOT LINE ARCHITECTURE. CALL 1-800-432-4770 FOR LOCATIONS OF BRIGHT HOUSE UNDERGROUND FACILITIES BEFORE DIGGING.



SCALE: 1" = 40' (22"x34")
SCALE: 1" = 80' (11"x17")

LEGEND

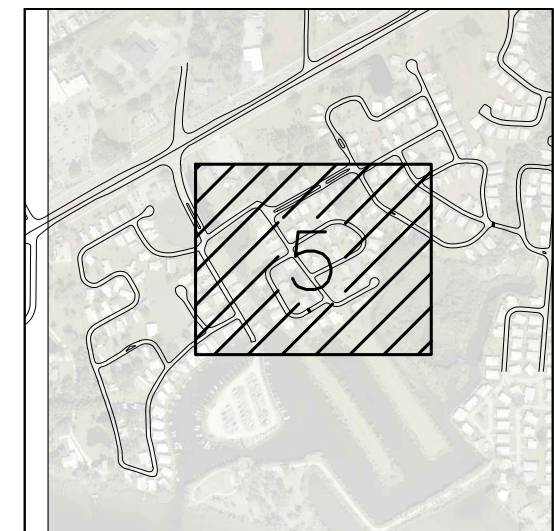
UWOW ID. NO. FROM GIS	#30 IMH 96074
MANHOLE OR CLEAN-OUT	1-1-25
JTV INC., TV INSPECTION SHEET NO.	LOCATED JTV
PREV. JTV MANHOLE NO.	DEPTH: 9.0'
MANHOLE OR CLEAN-OUT DEPTH*	

DIRECTION OF TV INSPECTION	→
±LENGTH & DIAMETER	189.2 LF 8" #22
JTV INC., TV INSPECTION SETUP NO.	
○ FACTORY TAP	
◆ BREAK-IN TAP (HAMMER)	

TV INSPECTION AND REPORT PRODUCED AND PREPARED BY JTV INC., JUNE 2012.
*CLEAN-OUT DEPTHS ARE ESTIMATION AND ARE NOT CONSIDERED ACCURATE.



Know what's below
Call before you dig



PUBLIC WORKS DEPARTMENT
ENGINEERING SERVICES
1022 26th Avenue East, Bradenton, FL 34208

COLONY COVE 1 - PHASE 2

SANITARY SEWER (GRAVITY) REHABILITATION

GRAVITY SEWER SYSTEM LAYOUT

REVISION DESCRIPTION	BY	DATE

PROJECT #	413-6005680		
SURVEY #	-		
SEC./TWN./RGE	10/34S/18E		
SCALE	1"=40'		
SURVEYED	-	BY	DATE
DESIGNED	JSS	5/2015	
DRAWN	CB/JSS	5/2015	
CHECKED	-		

J. SHEA SHOUN, P.E.

FLORIDA STATE ENGINEER
No. 60923
6/24/15
STATE OF FLORIDA
PROFESSIONAL ENGINEER

SHEET 05 OF 9

COPYRIGHT 2010 MANATEE COUNTY GOVERNMENT | S:\PWD_Engineering_Shore\Util_Eng_Design\PROJ\SS-SAN SWR Proj\Colony Cove Gravity Upgrades\COLONY COVE 1.DWG\SS-Phase 2 Colony Cove 1-Phase 2 SS Rehab.dwg, 6/24/2015 11:24 AM Shea Shoun, 1:1, ARCH full bleed D (36.00 x 24.00 inches)

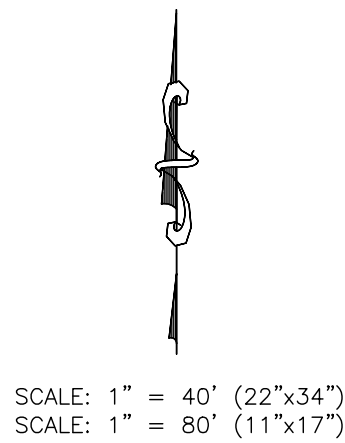
MATCH LINE - SEE SHEET 3

MATCH LINE - SEE SHEET 5

MATCH LINE - SEE SHEET 7



NOTE:
FPL POWER LINE:
EXACT LOCATION OF FPL COMPANY UNDERGROUND FACILITIES (BE) MUST BE DETERMINED PRIOR TO ANY SUBSURFACE OPERATIONS IN THIS AREA. CALL 1-800-432-4770 FOR LOCATIONS OF FPL COMPANY UNDERGROUND FACILITIES BEFORE DIGGING.
VERIZON:
EXACT LOCATION OF THE VERIZON UNDERGROUND FACILITIES (BVER) ARE UNKNOWN. THE FACILITIES MOSTLY FOLLOW THE REAR LOT LINE ARCHITECTURE.
BRIGHT HOUSE:
EXACT LOCATION OF THE BRIGHT HOUSE UNDERGROUND FACILITIES (BVER) ARE UNKNOWN. THE FACILITIES MOSTLY FOLLOW THE REAR LOT LINE ARCHITECTURE. CALL 1-800-432-4770 FOR LOCATIONS OF BRIGHT HOUSE UNDERGROUND FACILITIES BEFORE DIGGING.



LEGEND

MANHOLE OR CLEAN-OUT	UWOW ID. NO. FROM GIS
JTV INC., TV INSPECTION SHEET NO.	#30 IMH 96074
PREV. JTV MANHOLE NO.	1-1-25
MANHOLE OR CLEAN-OUT DEPTH*	LOCATED JTV DEPTH: 9.0'

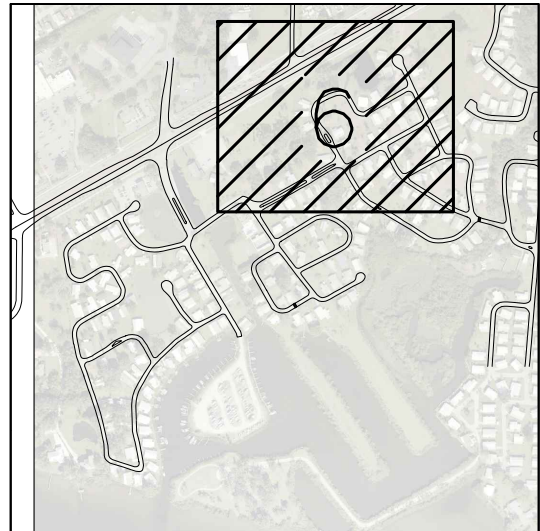
DIRECTION OF TV INSPECTION	189.2 LF 8"
±LENGTH & DIAMETER	#22

- FACTORY TAP
- ◆ BREAK-IN TAP (HAMMER)

TV INSPECTION AND REPORT PRODUCED AND PREPARED BY JTV INC., JUNE 2012.
*CLEAN-OUT DEPTHS ARE ESTIMATION AND ARE NOT CONSIDERED ACCURATE.



Know what's below
Call before you dig



SHEET INDEX (N7S)



COLONY COVE 1 - PHASE 2
SANITARY SEWER (GRAVITY)
REHABILITATION
GRAVITY SEWER SYSTEM LAYOUT

REVISION	DESCRIPTION	BY	DATE
NO.			
PROJECT #	413-6005680		
SURVEY #	-		
SEC./TWN./RGE	10/34S/18E		
SCALE	1"=40'		
	BY	DATE	
SURVEYED	-	-	
DESIGNED	JSS	5/2015	
DRAWN	CB/JSS	5/2015	
CHECKED	-	-	
J. SHEA SHOUN, P.E.			
FLORIDA PROFESSIONAL ENGINEER No. 60923			
STATE OF FLORIDA 6/24/15			
SHEET 06 OF 9			

COPYRIGHT 2010 MANATEE COUNTY GOVERNMENT | S:\PMD_Engineering_Shore\Util_Eng_Design\PROJ\SS-SNR_Proj\Colony Cove Gravity Upgrades\COLONY COVE 1.DWG | Phase 2 SS Rehab.dwg, 07/11/24 AM Shea Shoun, 1:1, ARCH full bleed D (36.00 x 24.00 inches)



NOTE:
FPL POWER LINE:
EXACT LOCATION OF FPL COMPANY UNDERGROUND FACILITIES (BE) MUST BE DETERMINED PRIOR TO ANY SUBSURFACE OPERATIONS IN THIS AREA. CALL 1-800-432-4770 FOR LOCATIONS OF FPL COMPANY UNDERGROUND FACILITIES BEFORE DIGGING.

VERIZON:
EXACT LOCATION OF THE VERIZON UNDERGROUND FACILITIES (BVER) ARE UNKNOWN. THE FACILITIES MOSTLY FOLLOW THE REAR LOT LINE ARCHITECTURE.

BRIGHT HOUSE:
EXACT LOCATION OF THE BRIGHT HOUSE UNDERGROUND FACILITIES (BVER) ARE UNKNOWN. THE FACILITIES MOSTLY FOLLOW THE REAR LOT LINE ARCHITECTURE. CALL 1-800-432-4770 FOR LOCATIONS OF BRIGHT HOUSE UNDERGROUND FACILITIES BEFORE DIGGING.

SCALE: 1" = 40' (22"x34")
SCALE: 1" = 80' (11"x17")

LEGEND

MANHOLE OR CLEAN-OUT	UWOW ID. NO. FROM GIS
JTV INC., TV INSPECTION SHEET NO.	#30 IMH 96074
PREV. JTV MANHOLE NO.	1-1-25
MANHOLE OR CLEAN-OUT DEPTH*	LOCATED JTV DEPTH: 9.0'

DIRECTION OF TV INSPECTION

±LENGTH & DIAMETER	189.2 LF 8"
JTV INC., TV INSPECTION SETUP NO.	#22

○ FACTORY TAP
◆ BREAK-IN TAP (HAMMER)

TV INSPECTION AND REPORT PRODUCED AND PREPARED BY JTV INC., JUNE 2012.

*CLEAN-OUT DEPTHS ARE ESTIMATION AND ARE NOT CONSIDERED ACCURATE.

Know what's below
Call before you dig

SHEET INDEX (N.T.S.)

PUBLIC WORKS DEPARTMENT
ENGINEERING SERVICES
1022 26th Avenue East, Bradenton, FL 34208

COLONY COVE 1 - PHASE 2

SANITARY SEWER (GRAVITY) REHABILITATION

GRAVITY SEWER SYSTEM LAYOUT

REVISION	DESCRIPTION	BY	DATE

NO.				
PROJECT #	413-6005680			
SURVEY #	-			
SEC./TWN./RGE	10/34S/18E			
SCALE	1"=40'			
	BY	DATE		
SURVEYED	-	-		
DESIGNED	JSS	5/2015		
DRAWN	CB/JSS	5/2015		
CHECKED	-	-		

J. SHEA SHOUN, P.E.

FLORIDA 60923

SHEET 07 OF 9

WETLAND BUFFER

FIGURE 1

NOTE: SILT FENCE TO BE PAID FOR UNDER THE CONTRACT UNIT PRICE FOR STAKED SILT FENCE (LF).

TYPICAL BALE SILT BARRIER
FIGURE 3

TURBIDITY BARRIERS
FIGURE 4

TYPICAL SWALE SECTION
FIGURE 5

TYPICAL RETENTION/DETENTION POND SECTION
FIGURE 6

SYNTHETIC BALE PROTECTION AROUND INLETS OR SIMILAR STRUCTURES

FIGURE 7

TURBIDITY BARRIER AT CONNECTION OF
STORM PIPE TO EXISTING LAKE
FIGURE 9

SILT BARRIER AT CONNECTION OF
STORM PIPE TO EXISTING SWALE

FIGURE 10

SILT BARRIER AT CONNECTION
OF SWALE TO EXISTING SWALE
FIGURE 11

UNDERGROUND PIPE CROSSING
FIGURE 12

SOD ALONG CURB
AND AROUND INLET
FIGURE 14

GRASS SLOPES

FIGURE 13

SECTION AA
TEMPORARY SLOPE DRAIN
FIGURE 15

SEDIMENT SUMP SECTION
FIGURE 16

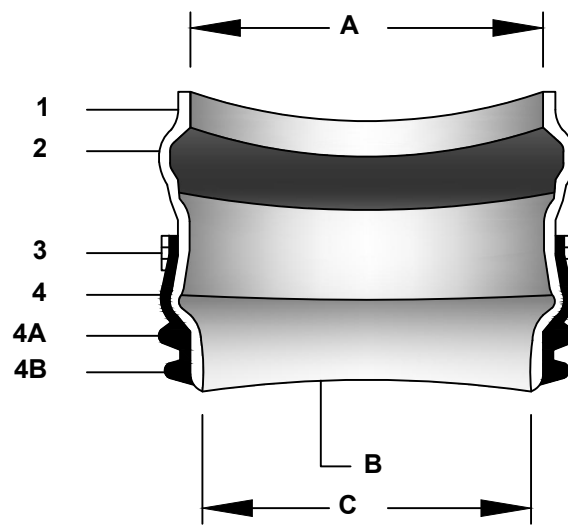
NOTE:
REFERENCE THE FDOT DESIGN STANDARDS
LATEST EDITION FOR ALL TEMPORARY
EROSION CONTROL MEASURES.

DATE		BY		REVISION DESCRIPTION		NO.	
PROJECT #						413-6005680	
SURVEY #						-	
SEC./TWN./RGE						10/34S/18E	
SCALE						1"=40'	
				BY		DATE	
SURVEYED				-			
DESIGNED				JSS		5/2015	
DRAWN				CB/JSS		5/2015	
CHECKED				-		-	
J. SHEA SHOUN, P.E.							
FLORIDA PROFESSIONAL ENGINEER No. 60923 STATE OF FLORIDA 6/24/15 SIGNATURE							

SHEET 08 OF 9

FATBOY, SDR 26, SDR 35 GASKETED BELL GRAVITY APPLICATIONS

- A. BELL END ACCEPTS PIPE WITH SDR 26, SDR 35 AND ASTM D3034 OR EQUIVALENT O.D. SPECIFICATION IN 4" AND 6" SIZES.
- B. CURVATURE VARIES WITH MAINLINE DIAMETERS.
- C. SPIGOT END SDR 26, PVC SDR 35, ASTM D3034 DIAMETERS: 4" AND 6"

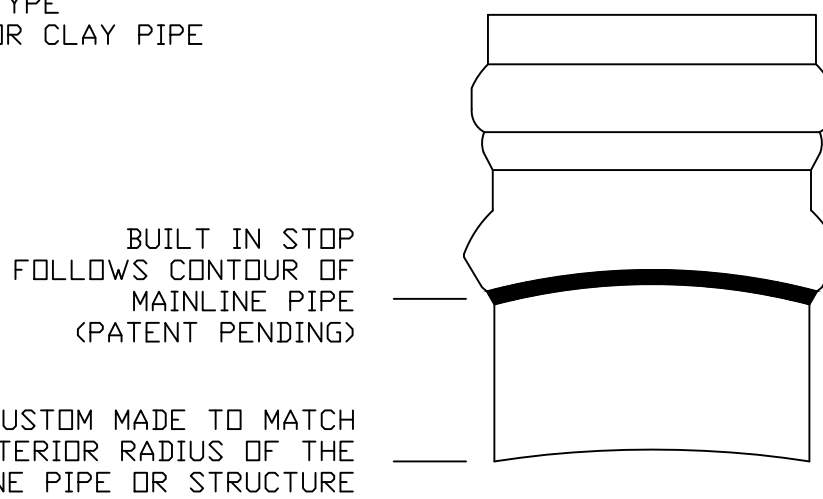


PART	PART NAME
1	HUB ADAPTOR
2	RUBBER GASKET
3	SECURING CLAMP*
4	RUBBER SLEEVE (AVAILABLE IN NITRILE AND EPDM BY SPECIAL ORDER)
4A	UPPER SEGMENT**
4B	LOWER SEGMENT**

MATERIALS
PVC SDR 26 ASTM D3034
ASTM F477
BAND SS #301
SCREW SS #305
HOUSING SS #301
ASTM F477

* OPTIONAL: #316 STAINLESS STEEL BAND, SCREW AND HOUSING
** DISTANCE BETWEEN 4A AND 4B WILL VARY BY PRODUCT TYPE
*** WILL NOT APPEAR ON RUBBER SLEEVES FOR CONCRETE OR CLAY PIPE

INSERTA TEE SIZE		HOLE DIAMETER	
4"	(100 mm)	4 1/2"	(114 mm)
6"	(150 mm)	6 1/2"	(165 mm)



NOTE: RECOMMENDED METHOD OF CUTTING HOLE IS WITH HOLE SAW FOR PVC AND OTHER PLASTICS, AND DIAMOND BIT FOR CONCRETES, CLAY, FRP AND D.I. (SEE INSTALLATION INSTRUCTIONS. HOLE SAWS ARE AVAILABLE FOR PURCHASE OR RENT.)



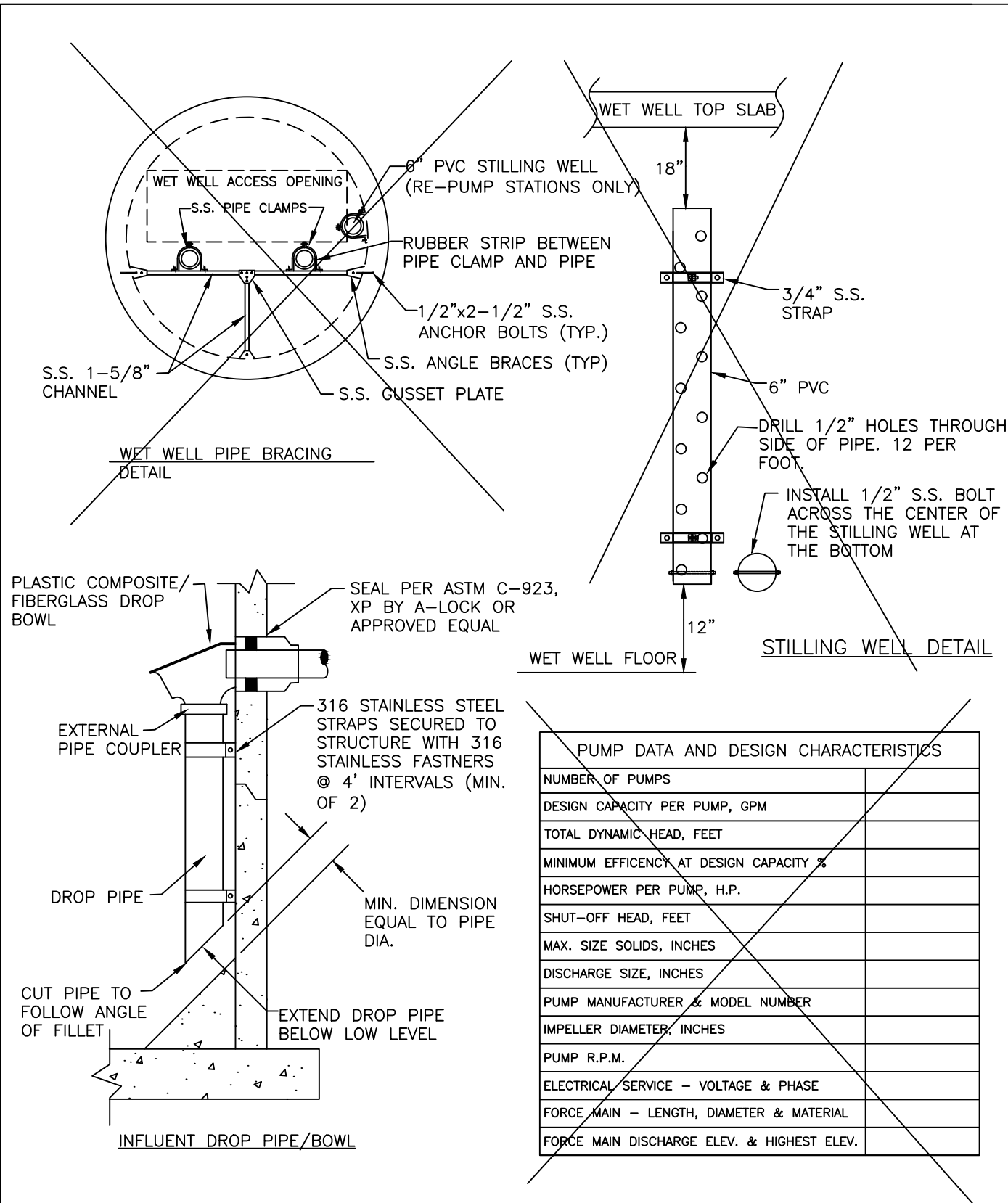
INSERTA TEE | PO BOX 714
CORNELIUS, OR 97113
PH:(503) 357-2110 FAX:(503) 359-5417
SALES@INSERTATEE.COM

FATBOY, SDR 26, SDR 35 GASKETED BELL GRAVITY APPLICATION SPECIFICATIONS

SCALE: NTS

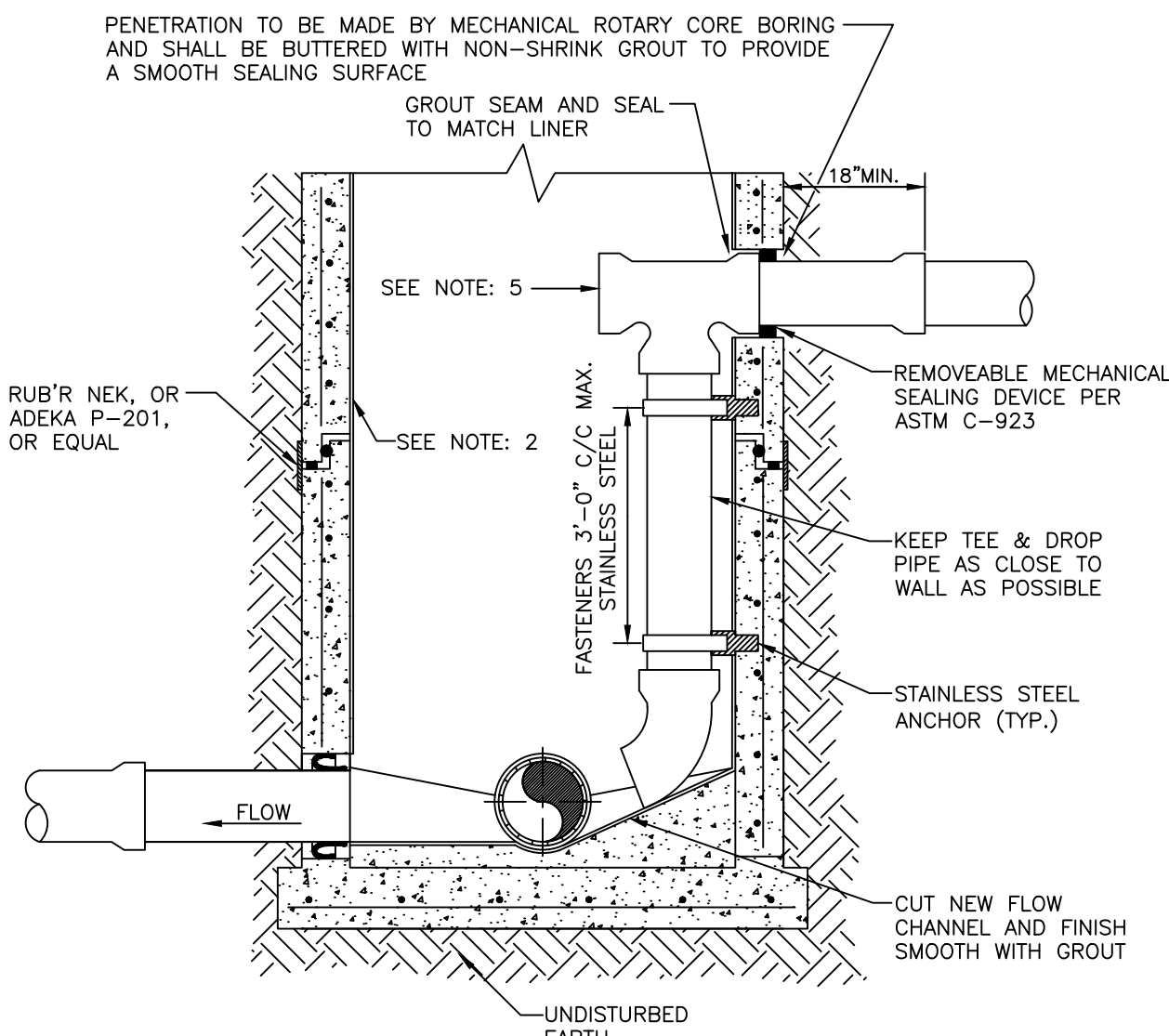
DATE: 9/24/2012

DRAWN BY: KLJ



- NOTES:**
1. STILLING WELL FOR LEVEL TRANSDUCER REQUIRED FOR RE-PUMP STATIONS ONLY.
 2. REFER TO STANDARD DETAILS US-17, US-18 & US-19 FOR PUMP STATION DETAILS.

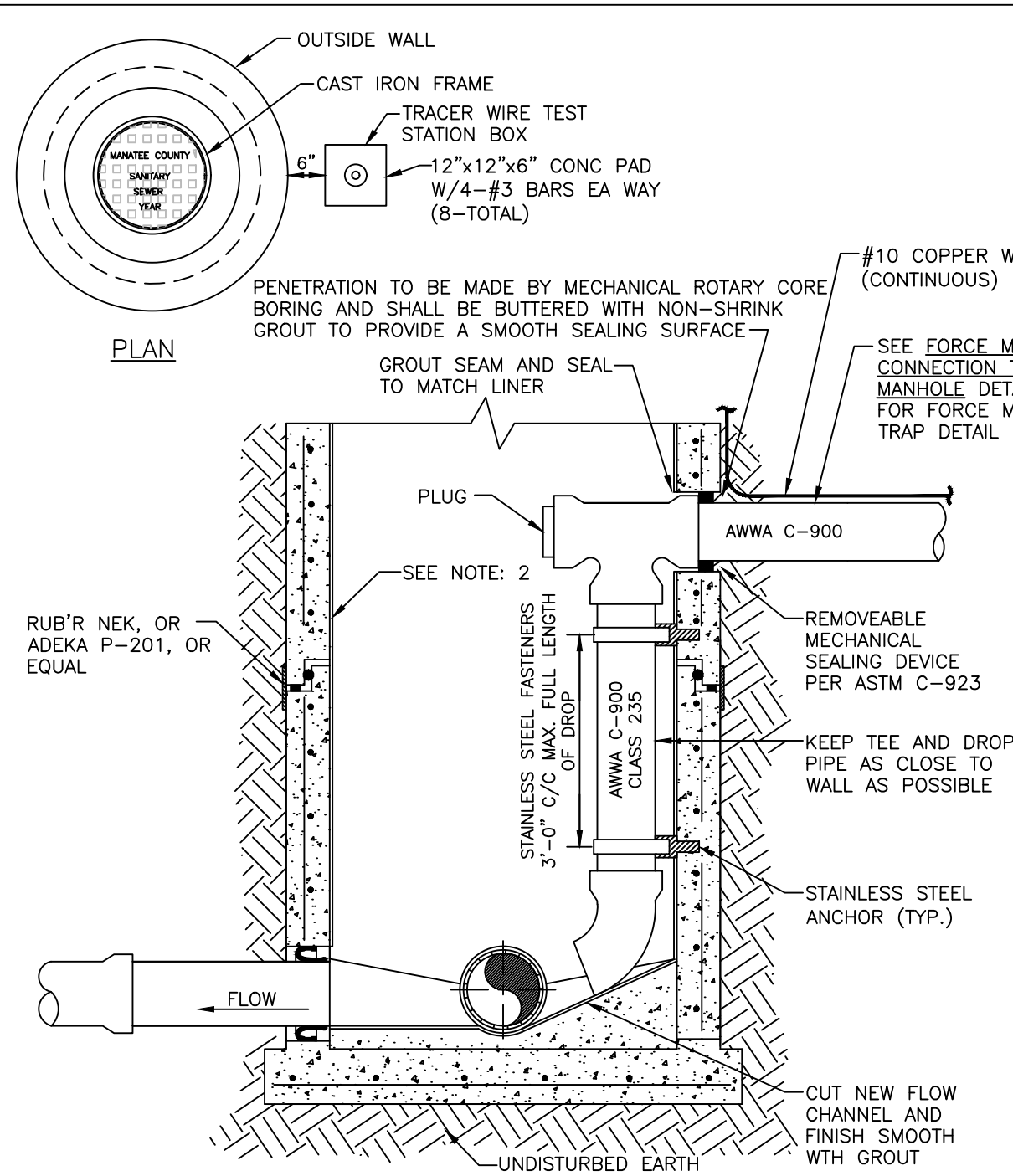
MANATEE COUNTY		PUMP STATION, DROP, PIPE BRACING, & STILLING WELL DETAILS	US-20
PUBLIC WORKS DEPARTMENT			
REV. BY	DATE		
CLB/DOM	11/10	MAY 10, 2011	
		DATE OF APPROVAL	PAGE 160



NOTES:

1. PIPE AND FITTINGS SHALL BE PVC ASTM D-3034 SDR 26.
2. THIS IS AN INTERCEPT MANHOLE AND MUST BE LINED WITH APPROVED LINER. APPROVED SPRAY-ON LINERS MAY BE USED FOR EXISTING MANHOLES. REFER TO SECTION 1 OF THE MANATEE COUNTY UTILITY STANDARDS.
3. INSIDE DROP MANHOLES ARE REQUIRED WHEN THE VERTICAL DISTANCE BETWEEN THE LOWEST EXISTING MANHOLE INVERT AND THE HIGHEST PIPE INVERT IS 2'-0" OR GREATER.
4. ALL HARDWARE AND FASTENERS SHALL BE STAINLESS STEEL.
5. PVC TE MAY BE SUBSTITUTED WITH A PLASTIC COMPOSITE/FIBERGLASS DROP BOWL AS MANUFACTURED BY RELINER/DURAN.

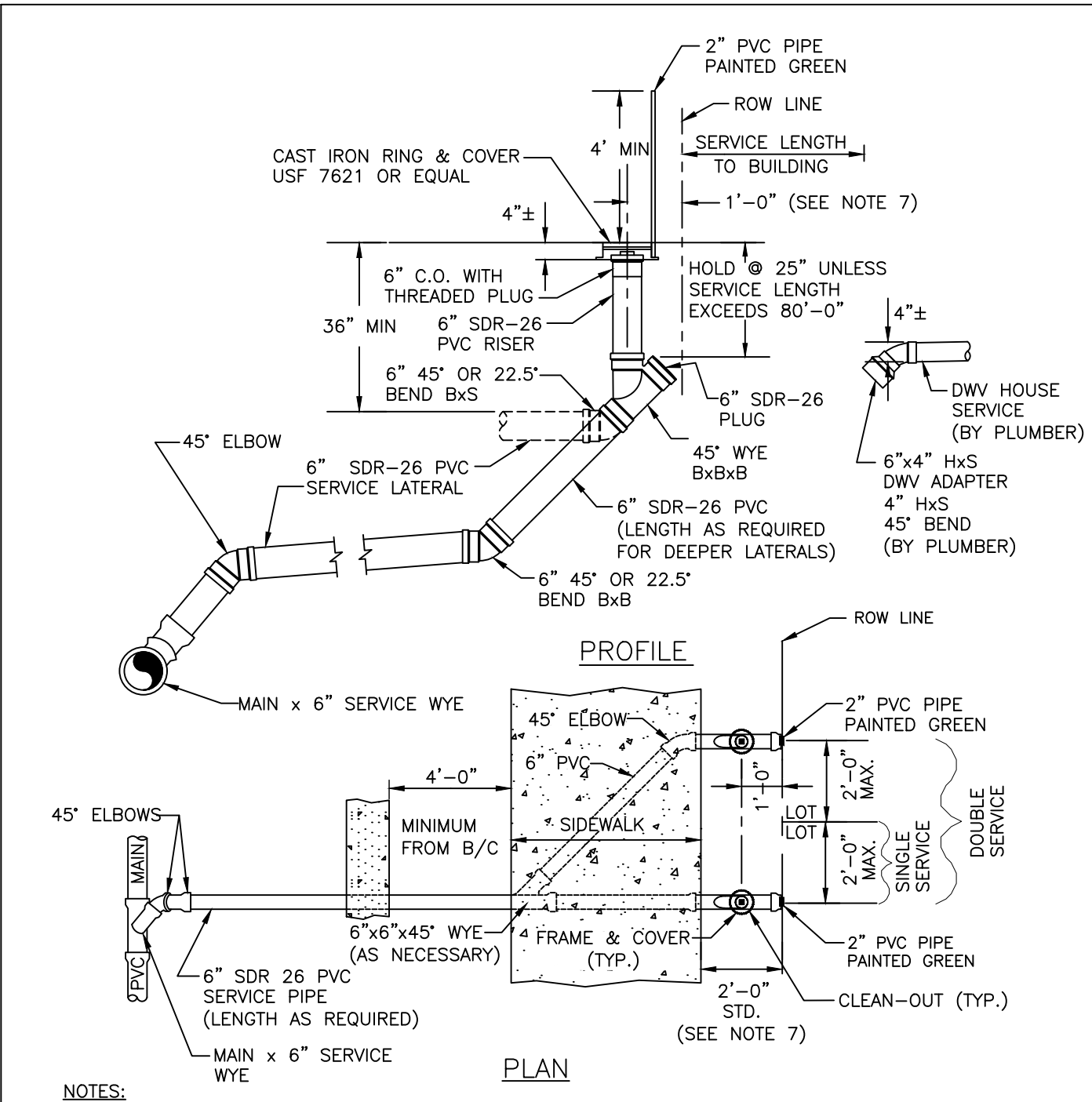
MANATEE COUNTY		GRAVITY INSIDE-DROP FOR RETROFIT OF EXISTING MANHOLE	US-7
PUBLIC WORKS DEPARTMENT			
REV. BY CLB/KE	DATE 11/10		
MAY 10, 2011			
DATE OF APPROVAL			



NOTES:

1. ALL FITTINGS SHALL BE AWWA C-907. DROP PIPE SHALL BE AWWA C-900 (CLASS 235, DR 18).
2. THIS IS AN INTERCEPT MANHOLE AND MUST BE LINED WITH AN APPROVED LINER. APPROVED SPRAY ON LINERS ARE TO BE USED FOR EXISTING MANHOLES. REFER TO SECTION 1 OF THE MANATEE COUNTY UTILITY STANDARDS.
3. INSIDE DROP MANHOLES ARE REQUIRED WHEN THE VERTICAL DISTANCE BETWEEN THE LOWEST EXISTING MANHOLE INVERT AND THE HIGHEST PIPE INVERT IS 2'-0" OR GREATER.
4. ALL HARDWARE AND FASTENERS SHALL BE STAINLESS STEEL.
5. TRAP IS REQUIRED IN FORCE MAIN BEFORE ENTERING MANHOLE.

MANATEE COUNTY		FORCE MAIN RETROFIT FOR INSIDE-DROP CONNECTION	US-8
PUBLIC WORKS DEPARTMENT			
REV. BY CLB/KE	DATE 11/10		
<div style="text-align: center;"> <u>MAY 10, 2011</u> DATE OF APPROVAL </div>			



NOTES:

1. RUBBER DONUTS ARE NOT TO BE USED.
2. "SCO" TO BE IMPRESSED INTO THE NEWLY-POURED CONCRETE CURB, ALONG WITH DISTANCE FROM THE CURB TO THE CURB INSTALLED WITH "SCO" AND X 1".
3. GALVANIZED STEEL SCREW IN THE EDGE OF PAVEMENT WITH THE FOOTAGE FROM THE DISC TO THE CLEAN-OUT.
4. SANITARY MANHOLE CLEAN-OUTS SHALL NOT BE LOCATED IN DRAINAGE SWALES, EASEMENTS, SIDEWALKS OR DRIVEWAYS.
5. NO SERVICE CONNECTIONS TO BE MADE TO THE CLEAN-OUT RISER. ALL DOMESTIC CONNECTIONS SHALL BE MADE TO THE BUTT-OUT PROVIDED.
6. SERVICE SEWER SHALL BE 5' MIN. FROM WATER SERVICE OR FIRE HYDRANT.
7. CLEAN-OUT ADAPTER TO BE SOLD. SOLID WELD TO RISE FROM CLEAN-OUT THREADS SHALL BE EQUIPPED WITH TIGHTENING NUMBERS TAPED TO SEWER WATER.
8. WHEN THE DISTANCE BETWEEN THE EDGE OF THE SIDEWALK & THE ROW LINE IS ONE FOOT (1'-0" MAX W/MEDIAN) THE DISTANCE BETWEEN THE CENTER OF THE CO RISER & THE ROW LINE SHALL BE 6'.

MANATEE COUNTY PUBLIC WORKS DEPARTMENT		SINGLE AND DOUBLE SERVICE CONNECTION	US-13
REV. BY CLB/DOH	DATE 11/10		
MAY 10, 2011 DATE OF APPROVAL			



**PUBLIC WORKS DEPARTMENT
ENGINEERING SERVICES
1022 26th Avenue East, Bradenton, FL 34208**

COLONY COVE 1 - PHASE 2 SANITARY SEWER (GRAVITY) REHABILITATION DETAILS & PROJECT NOTES

[illegible]

PROJECT #	413-6005680	
SURVEY #	—	
SEC./TWN./RGE	10/34S/18E	
SCALE	1"=40'	
	BY	DATE
SURVEYED	—	
DESIGNED	JSS	5/2015
DRAWN	CB/JSS	5/2015
CHECKED	—	—

J. SHEA SHOUN, P.E.

