

SECTION E – TECHNICAL SPECIFICATIONS

ABC-2	X	96 Lab. Dens.	**
ABC-3	X	96 Lab. Dens.	**
FC-1	X	96 Lab. Dens.	X
FC-2	No Density Required	96 Lab. Dens.	X
FC-4	X	96 Lab. Dens.	X

*X - Denotes test is required

** - Shall meet the straightedge requirements of 200-7

3. LOTS

For the purpose of acceptance and partial payment, each day's production will be divided into LOTS. The standard size of a LOT shall consist of 5,000 lineal feet of any pass made by the paving train regardless of the width of the pass or the thickness of the course. Pavers traveling in echelon will be considered as two separate passes. When at the end of a day's production or the completion of a given course or at the completion of the project, a partial LOT will be redefined to include this partial LOT and the evaluation of the LOT will be based on either six or seven subplot determinations. If the partial LOT contains three or four sublots with their appropriate test results, this partial LOT will be redefined to be a whole LOT and the evaluation of it will be based on the three or four subplot determinations.

For the standard size LOT (5,000 lineal feet), five density determinations - one for each subplot - will be made at random locations within the LOT, but not to be taken within one foot of any unsupported edge. The statically derived random number tables are furnished by the County. These will also be used for partial LOTS, for the Successful Bidder to receive full payment for density, the average density of a LOT will be a minimum of 98.0 percent of the control strip density. Once the average density of a LOT has been determined, the Successful Bidder will not be permitted to provide additional compaction to raise the average.

4. Acceptance:

The completed pavement will be accepted with respect to density on a LOT basis. Partial payment will be made for those LOTS that have an average density less than 98.0 percent of the Control Strip Density based on the following schedule:

TABLE B - Payment Schedule for Density

<u>Percent of Control Strip Density*</u>	<u>Percent of Payment</u>
98.0 and above	100%
97.0 to less than 98.0	95%
96.0 to less than 97.0	90%
<u>**Less than 96.0</u>	<u>75%</u>

*In calculating the percent of control strip density, **do not round off** the final percentage.

**If approved by the County based on an engineering determination that the material is acceptable to remain in place, the Successful Bidder may accept the indicated partial

SECTION E – TECHNICAL SPECIFICATIONS

pay, otherwise the County will require removal and replacement at no cost. The Successful Bidder has the option to remove and replace at no cost to the County at any time.

JOINTS

TRANSVERSE JOINTS

Placing of the mixture shall be as continuous as possible and the roller shall not pass over the unprotected end of the freshly laid mixture except when the laying operation is to be discontinued long enough to permit the mixture to become chilled. When the laying operation is interrupted, a transverse joint shall be constructed by cutting back on the previous run to expose the full depth of the mat.

LONGITUDINAL JOINTS:

For all layers of pavement except the leveling course, placing of each layer shall be accomplished to cause longitudinal construction joints to be offset 6 to 12 inches laterally between successive layers. The County may waive this requirement where offsetting is not feasible due to the sequence of construction.

(IV.55) FOG SEAL

The work specified in this section consists of furnishing and applying fog seal on existing roads at application rates described here-in. Fog seals are a method of adding asphalt to an existing pavement surface to improve sealing or waterproofing, prevent further stone loss by holding aggregate in place, or simply improve the surface appearance. Generally, fog seal is a light spray application of diluted asphalt emulsion used primarily to seal an existing asphalt surface to reduce raveling and enrich dry and weathered surfaces. However, inappropriate use can result in slick pavements and tracking of excess material.

Materials

The emulsion types recommended for fog seals may be cationic (i.e., a positive surface charge on the asphalt particles), or anionic (i.e., a negative surface charge on the asphalt particles). The primary types used are CSS-1h and SS-1h. In some circumstances, CQS-1h (and LMCQS-1h) will give a faster set.

Liquid emulsified bituminous material for dilution: CSS-1h liquid bituminous material conforming to the requirements of AASHTO M 208 or SS-1h conforming to the requirements of AASHTO M 140 (except as modified herein) shall be utilized. The Successful Bidder shall certify the liquid bituminous material meets the aforementioned specifications

The asphalt emulsion may contain up to 43% water prior to dilution. Original emulsion water and dilution water shall be limited to and not exceed for any reason 50% by volume. Therefore, residual asphalt shall equal 50% (+1%, -0%).

Dilution Water and Emulsion Water: Water introduced into the asphalt must be potable and free from detectable solids or incompatible soluble salts (hard water).

SECTION E – TECHNICAL SPECIFICATIONS

Material Samples: The County will require the Successful Bidder to sample and test each load of emulsion prior to delivery. The Successful Bidder will also provide a sample of the emulsion, on site, prior to commencing work.

The County will require the Successful Bidder to provide sample containers and a local Independent testing laboratory for the analyzing of emulsion. The Successful Bidder will be responsible for the cost of the testing. The County reserves the right to test any shipment of emulsion that is believed to be of substandard. All samples shall be shipped and stored in clean air tight sealed wide mouth jars or bottles made of plastic.

Equipment

Distributor: The liquid bituminous material shall be applied with a truck mounted, pressure distributor that has been calibrated within the previous twelve (12) months, for transverse and longitudinal application rate. The distributor shall be equipped, maintained and operated so that the bituminous material can be applied at controlled temperatures and rates from .03 to .22 gallons per square yard with nozzles adjusted to allow minimum overlap of 3x. The distributor shall be capable of applying bituminous material of variable widths up to sixteen (16) feet. The distributor shall uniformly apply the bituminous material to the specified rate with a maximum allowed variation of 0.015 gallons per square yard. Distributor equipment shall include tachometer, accurate volume measuring device, a calibrated tank and a thermometer for measuring the temperature of the tank's contents. Distributors shall be equipped with an asphalt pump and full circulating spray bars adjustable laterally and vertically. Distributors and transport trailers shall be equipped with a sampling valve. Distributor trucks shall be of the pressure type with insulated tanks. The use of gravity distributors will not be permitted. The valves shall be operated by levers so that one or all valves may be quickly opened or closed in one operation. The valves which control the flow from nozzles shall act positively so as to provide a uniform unbroken spread of bituminous material on the surface.

The distributor shall be equipped with devices and charts to provide for accurate and rapid determination and control of the amount of bituminous material being applied and with a bitumeter of the auxiliary wheel type registering speed in feet per minute, and trip and total distance in feet.

Additional equipment

Additional equipment will be needed to complete the operations required by this technical provision. All equipment necessary for the successful completion of projects governed by this technical provision shall be included in the unit costs associated herein. Availability of quality assurance devices shall be the responsibility of the Successful Bidder.

Experience

Bidders must submit a minimum of five Fog Seal project references that have been completed within the past three years on Attachment "A", Contractor's Questionnaire. Bidders may be required to submit detailed information regarding the staff that they propose for this project. Successful Bidder shall be capable of meeting all the requirements of this specification at the time of the bid. Staff shall have the option to

SECTION E – TECHNICAL SPECIFICATIONS

inspect the Successful Bidder's equipment and if found deficient, it shall be the basis for dismissal of Successful Bidder's bid.

Construction

Layout:

The Successful Bidder will be responsible for the lay out of the roadway and project planning and sequencing to meet traffic control requirements prior to paving.

Weather and Seasonal limitations: The fog seal shall not be applied to a wet surface or when rain is occurring or the threat of rain is present immediately before placement. The surface treatment shall not be applied when the temperature is less than 50 degrees Fahrenheit in the shade. When applying emulsions, the temperature of the surface shall be a minimum of 59°F, and no more than 140°F.

If unexpected rain occurs prior to the emulsion breaking, the area shall be re-fogged at no cost to the county. Further, the Successful Bidder's traffic control and project monitoring shall continue until the surface is either free of emulsion or the emulsion applied has broken or the resultant surface is not slippery or dangerous to vehicular travel.

Preparation of Surface

The Successful Bidder will be responsible for blowing or sweeping the road immediately ahead of the fog seal operation to make sure the road is free of loose aggregate and other debris. The surface shall be clean and dry prior to the application.

Application of bituminous material:

The emulsion shall be diluted no more than 24 hours before its intended use to avoid settlement of the diluted emulsion. Water shall be introduced into the emulsion. Introducing emulsion into water is not permitted.

The emulsion shall be circulated using a centrifugal or other suitable pump to ensure uniformity as needed.

Properly calibrated distributor trucks with 4 to 5 mm (1/8" to 3/16") opening spray nozzles shall be used to apply the emulsion. The emulsion may be heated to 122°F maximum, or may be applied at ambient temperatures conforming to the requirements of this technical provision. The emulsion shall be sprayed at a rate as directed in the field by the County. Application will be determined dependent upon the surface conditions.

Tight Surface (low absorbance and relatively smooth) - .09-.14 gal/sy

Open Surface (relatively porous and absorbent with open voids) - .18-.22 gal/sy

Exceptions: When fog seal is required as a subsequent treatment to chip seal, OGCM, or other method described in this blanket purchase order, materials, equipment and application shall be as described in this technical provision and as amended in the technical provision appropriate to the work the fog seal is subsequent to. If

SECTION E – TECHNICAL SPECIFICATIONS

discrepancies occur, the County shall determine the appropriate specification.

Traffic Control

The Successful Bidder shall furnish all necessary traffic control, barricades, signs and flagmen, to ensure the safety of the traveling public and to all working personnel. Traffic shall not travel on fresh fog seal until material is sufficiently broke such that tire pickup does not occur. The Successful Bidder shall submit an M.O.T plan indicating all facets of traffic control for the project area. The MOT plan must be approved in writing by the County prior to commencing any work. All traffic control shall be in accordance with the FDOT Roadway Design Standards, most current edition and TP-102. M.O.T. and associated devices shall be checked daily and periodically throughout the project for compliance; and where adjustments or corrections are needed, prompt revisions shall be made.

Method of Measurement

If a pay item is listed on the Bid Form for work required in this Technical Specification, the quantity to be paid shall be as specified in the Bid Form including all items of work described herein. Any item necessary for Fog Seal, and not specifically listed in another item in the Bid Form, shall be included in this item.

(IV.55) BASIS OF PAYMENT

The quantities to be paid for under the Technical Specification shall be included in the per square yard price for Fog Seal. There will be a bid item for "Tight Surfaces" (.09-.14 gal/sy) and a separate bid item for "Open Surfaces" (.18-.22 gal/sy) as listed in the Bid Form. The unit price includes all items listed in the blanket purchase order, including all Technical Specifications pertaining to Fog Seal, including all items of work described herein. No additional payment will be provided for any item necessary for the completion of this blanket purchase order as detailed in the specifications.

SECTION V – STORMWATER, WASTEWATER and UTILITIES

The work specified in this section shall reference FDOT specifications Section 425-430; and Manatee County Specifications chapters 202.0 to 202.5, requirements as listed on Bid Form with the exception of V.39, V.54, V.55 and V.56.

(V.39) ALTERNATIVE MANHOLE ADJUSTMENT

The work specified in this section covers the adjustment of a structure by the backfill of the adjustment hole with S-III Asphalt Concrete. It also requires heating, scarification and reworking of the existing asphalt surrounding the adjustment, blend with new material as needed and compact.

(V.39) BASIS OF PAYMENT

All bid items specified shall be paid under the per unit pay item noted on the Bid Form.

SECTION E – TECHNICAL SPECIFICATIONS

(V.54) REMOVE CONCRETE COLLAR

(V.55) REMOVE BOX INLET

(V.56) REMOVE CONCRETE DRAINAGE STRUCTURE

The work specified in the section shall include all equipment, labor and incidentals to expose remove and dispose of a concrete collar, box inlet and concrete drainage structure.

(V.54, V.55, V.56) BASIS OF PAYMENT

All bid items specified shall be paid under the each and day pay Item noted on the Bid Form.

SECTION VI – CURB AND GUTTER, SIDEWALKS AND DRIVEWAYS

DESCRIPTION OF WORK

The work specified in this section shall reference FDOT Specifications 520 & 522; and Manatee County Specifications chapters 200 & 300 requirements as listed on Bid Form with the exception of VI.3, VI.11, VI.12, VI.13, VI.14, VI.15, VI.16, VI.17, VI.18 and VI.19.

(VI.3) MODIFIED TYPE “F” CURB

The items under this section are the same as “F” curb, see Manatee County specifications for “F” curb 201.2, except that the width of the curb may vary, by being less, to meet the necessary field conditions.

(VI.3) BASIS OF PAYMENT

All bid items specified shall be paid under the linear feet pay item noted on the Bid Form.

(VI.11) MISCELLANEOUS CONCRETE FORMED AND POURED

The work specified under this section shall include all equipment, material (including rebar) and labor necessary to frame and pour concrete of any shape or dimension at the direction of the County and type of concrete.

(VI.11) BASIS OF PAYMENT

All bid items specified under this section shall be paid under the cubic yards and pounds of rebar (reinforced steel) used under the pay item noted on the Bid Form.

(VI.12) REMOVE CONCRETE SIDEWALK/DRIVEWAY (2500PSI)

The work specified in the section shall include all equipment, labor and incidentals to expose remove and dispose of a concrete sidewalk/driveway.

(VI.12) BASIS OF PAYMENT

All bid items specified shall be paid under the square yards pay item noted on the Bid Form.

(VI.13) REMOVE CONCRETE CURB & GUTTER

The work specified in this section shall include all equipment, labor and incidentals to expose remove and dispose of a concrete curb and gutter.

SECTION E – TECHNICAL SPECIFICATIONS

(VI.13) BASIS OF PAYMENT

All bid items specified shall be paid under the each and day pay item noted on the Bid Form.

(VI.14) CONSTRUCT ASPHALT SIDEWALK / DRIVEWAY

The work specified in this section includes all equipment, materials and labor necessary to constructed asphalt paths of the dimension and material noted. The task includes the excavation of the path area such that the path matches the existing grade of the surrounding area and the compaction of the excavation bottom.

(VI.14) BASIS OF PAYMENT

All bid items specified under this section shall be paid under the lineal foot and cubic yards under the pay item noted on the Bid Form.

(VI.15) PREPARATION FOR CURB AND GUTTER (NEW INSTALL)

The work specified under this section includes all equipment, materials and labor necessary to prepare a job site location for the installation of curb. The area will be cleared of all organic materials and excavated to the required elevation and compacted. When additional fill is required it will be installed to bring the base area to correct elevation and compacted in place.

(VI.15) BASIS OF PAYMENT

All bid items specified shall be paid under the following pay item noted on the Bid Form.

Preparation - lineal feet

Additional fill – cubic yard

Additional excavation – cubic yard

(VI.16) CONCRETE PUMPING

The work specified under this section includes all equipment, materials and labor associated with the use of a concrete pump on the job site to pump concrete to the actual pour location. This item will be paid by either the hour or day.

(VI.16) BASIS OF PAYMENT

All bid items specified shall be paid by either the hour or day noted on the Bid Form.

(VI.17) ADA TRUNCATED DOME FURNISH AND INSTALL

The work specified in this section includes all equipment, materials and labor to install truncated domes at sidewalk locations directed by the County. The domes must meet the requirements of Manatee County specification 302.3 and FDOT Design Standards, Index 304. This item will be paid for in square feet.

(VI.17) BASIS OF PAYMENT

All bid items specified shall be paid under the square foot pay item noted on the Bid Form.

SECTION E – TECHNICAL SPECIFICATIONS

(VI.18) STANDARD MAIL BOX RELOCATE

The work specified in this section includes all equipment, material and labor to keep an address with a proper functioning mail box during the duration of the project. This may require the installation of a standard US Postal Service mail box and wooden post, the relocation of existing mailbox and/or the reinstallation of the original mailbox once the project is complete.

(VI.18) BASIS OF PAYMENT

All bid items specified shall be paid under the each (unique address / mailbox for the duration of the release order (project) pay item noted on the Bid Form.

(VI.19) IRRIGATION CAP

The work specified in this section includes all equipment, labor and materials necessary to cap various irrigation lines that may be encountered within a job site. The caps must match the existing irrigation material and be a permanent glue type. This item is paid for by each cap installed.

(VI.19) BASIS OF PAYMENT

All bid items specified shall be paid under the each (cap installed) pay item noted on the Bid Form.

SECTION VII – TRAFFIC CONTROL

The work specified and basis of payment in this section shall reference the respective FDOT specifications edition 2015.

SECTION VIII – PAVEMENT BASE CONSTRUCTION

The work specified and basis of payment in this section shall reference the respective FDOT specifications edition 2015.

SECTION F

ARTICLE IV. - LANDSCAPE MAINTENANCE AND FERTILIZER REGULATION^[1]

Footnotes:

--- (1) ---

Editor's note—Sec. 37 of Ord. No. 14-41, adopted Oct. 7, 2014, redesignated §§ 2-23-1—2-35-14, which derived from Ord. No. 11-21, adopted May 24, 2011, as §§ 2-14-60—2-14-74.

Sec. 2-14-60. - Findings of fact.

As a result of adverse impacts to Manatee County waters caused by excessive nutrients resulting from improper landscape maintenance practices and the incorrect or unnecessary application of fertilizers containing phosphorus and/or nitrogen, the Manatee County Board of County Commissioners has determined that the lands and waters of Manatee County are at particularly high risk for adverse effects to surface and ground water from such fertilizer containing phosphorus and/or nitrogen, particularly when not applied in accordance with best management practices established by the Florida Department of Environmental Protection (FDEP), the Florida Department of Agriculture and Consumer Services (DACS), and the University of Florida Institute of Food and Agricultural Sciences (UF/IFAS).

(Ord. No. 14-41, § 37, 10-7-14)

Sec. 2-14-61. - Purpose and intent.

This chapter regulates the proper use of fertilizers by any applicator and requires proper training of commercial and institutional fertilizer applicators and landscape maintenance companies by establishing a restricted season for fertilizer application, fertilizer-free zones, low-maintenance zones, exemptions, training, and certification requirements. This chapter requires the use of best management practices which provide specific management guidelines to minimize negative secondary and cumulative environmental effects associated with the misuse of fertilizers and improper landscape maintenance practices. These secondary and cumulative effects have been observed in and on Manatee County's natural and artificial stormwater and drainage conveyances, rivers, lakes, canals, estuaries, interior freshwater wetlands, and Tampa Bay. Collectively, these water bodies are an asset critical to the environmental, recreational, cultural and economic well-being of Manatee County residents and the health of the public. Overgrowth of algae and vegetation hinder the effectiveness of flood attenuation provided by natural and artificial stormwater and drainage conveyances. Regulation of nutrients, including both phosphorus and nitrogen contained in fertilizer, will help improve and maintain water and habitat quality.

(Ord. No. 14-41, § 37, 10-7-14)

Sec. 2-14-62. - Definitions.

As used in this chapter, the following words, terms, and phrases shall have the meanings ascribed to them in this section, except where the context clearly indicates a different meaning:

- (a) *Application* or *apply* means the actual physical deposit of fertilizer to turf or landscape plants.
- (b) *Applicator* means any person who applies fertilizer on turf and/or landscape plants in the county.
- (c) *Approved best management practices (BMP) training program* means a training program approved by the county administrator that includes, at a minimum, the BMPs associated with proper mowing, trimming, irrigation, and landscape debris management, the most current version of the "Florida Green Industries Best Management Practices for Protection of Water Resources in Florida, December 2008", as updated, and the more stringent requirements set forth in this chapter.
- (d) *Best management practices* or *BMP* mean turf and landscape practices which minimize the negative environmental impacts of installation and maintenance of landscapes.

SECTION F

- (e) *Board* means the board of county commissioners of Manatee County, Florida.
- (f) *Code enforcement officer or code inspector* means any designated employee or agent of the county whose duty it is to enforce county codes and ordinances.
- (g) *Commercial fertilizer applicator* means any person who applies fertilizer on turf and/or landscape plants in the county in exchange for money, goods, services, or other valuable consideration.
- (h) *County* means Manatee County, Florida.
- (i) *County administrator* means the county administrator or the county administrator's designee responsible for administration and implementation of the provisions of this chapter.
- (j) *Fertilize, fertilizing, or fertilization* means the act of applying fertilizer to turf, specialized turf, or landscape plants.
- (k) *Fertilizer* means any substance or mixture of substances that contains one or more recognized plant nutrients and promotes plant growth, or controls soil acidity or alkalinity, or provides other soil enrichment, or provides other corrective measures to the soil.
- (l) *Granular* means composed of small grains or particles.
- (m) *Institutional applicator* means any person, other than a noncommercial or commercial applicator, that applies fertilizer for the purpose of maintaining turf and/or landscape plants. Institutional applicators shall include, but shall not be limited to, owners and managers of public lands, schools, parks, religious institutions, utilities, industrial or business sites, and any residential properties maintained in condominium and/or common ownership.
- (n) *Impervious surface* means a surface that has been compacted or covered with a layer of material so that it is highly resistant or prevents infiltration by stormwater. It includes roofed areas and surfaces such as compacted sand, limerock, or clay, as well as conventionally surfaced streets, sidewalks, parking lots, and other similar surfaces.
- (o) *Landscape plant* means any native or exotic tree, shrub, or groundcover (excluding turf).
- (p) *Landscape maintenance* means activities carried out to manage and maintain landscape plants, including, but not limited to, mowing, edging, and trimming.
- (q) *Low-maintenance zone* means an area a minimum of six (6) feet wide adjacent to watercourses which is planted with nonturf grass vegetation and managed in order to minimize the need for fertilization, watering, and mowing.
- (r) *Pasture* means land used for livestock grazing that is managed to provide feed value.
- (s) *Person* means any human being, business, corporation, limited liability company, partnership, limited partnership, association, club, organization, and/or any group of people acting as an organized entity.
- (t) *Restricted season* means June 1 through September 30.
- (u) *Site supervisor* means the direct supervisor of landscape maintenance personnel.
- (v) *Slow or controlled release fertilizer* means a fertilizer containing a plant nutrient in a form which delays its availability for plant uptake and use after application, or which extends its availability to the plant significantly longer than a referenced rapidly available nutrient fertilizer.
- (w) *Specialized turf* means grass used for athletic fields, golf course practice and play areas, and other similar activities.
- (x) *Specialized turf manager* means a person responsible for fertilizing or directing the fertilization of specialized turf.
- (y) *Surface water* means fresh, brackish, saline or tidal waters, including, but not limited to, bays, rivers, lakes, streams, wetlands, springs, impoundments, as well as canals and other artificial water bodies.
- (z) *Turf, sod, or lawn* means a piece of grass-covered soil held together by the roots of the grass.

SECTION F

(aa) *Vegetable garden* means an area dedicated to the cultivation of edible plants.

(Ord. No. 14-41, § 37, 10-7-14)

Sec. 2-14-63. - Applicability.

This chapter shall be applicable to and shall regulate any and all applicators of fertilizer, areas of application of fertilizer, and landscape maintenance activities within the county, unless such applicator or activity is specifically exempted by the terms of this chapter from the regulatory provisions of this chapter.

(Ord. No. 14-41, § 37, 10-7-14)

Sec. 2-14-64. - Weather and seasonal restrictions.

- (a) No applicator shall apply fertilizers containing nitrogen and/or phosphorus to turf and/or landscape plants during the restricted season from June 1 through September 30.
- (b) No applicator shall apply fertilizers containing nitrogen and/or phosphorus to turf and/or landscape plants during a period for which the National Weather Service has issued any of the following advisories for any portion of the county: a severe thunderstorm warning or watch, flood warning or watch, tropical storm warning or watch, hurricane warning or watch, or if rain greater than or equal to two (2) inches in a twenty-four-hour period is forecasted.

(Ord. No. 14-41, § 37, 10-7-14)

Sec. 2-14-65. - Fertilizer content and application rate.

- (a) Fertilizers shall be applied to turf and/or landscape plants at the lowest recommended rate according to the "Florida Green Industries Best Management Practices for Protection of Water Resources In Florida, December 2008", as updated, with no more than four (4) pounds of nitrogen per one thousand (1,000) square feet applied in any calendar year.
- (b) No fertilizer containing phosphorus shall be applied to turf and/or landscape plants in the county, except where a phosphorous deficiency has been demonstrated in the soil underlying the turf and/or landscape plants by a soil analysis test performed by a State of Florida certified laboratory. Any person who obtains a soil analysis test showing a phosphorous deficiency and who wishes to apply phosphorous to turf and/or landscape plants shall provide a copy of the test results to the county administrator prior to the application of phosphorous.
- (c) Nitrogen fertilizer shall not be applied on newly established turf or new landscape plants for the first thirty (30) days.
- (d) Granular fertilizers containing nitrogen applied to turf and/or landscape plants within the county shall contain no less than fifty (50) per cent slow release nitrogen per guaranteed analysis label.
- (e) Liquid fertilizers containing nitrogen applied to turf and/or landscape plants within the county shall not be applied at a rate that exceeds 0.5 pounds per one thousand (1,000) square feet per application.

(Ord. No. 14-41, § 37, 10-7-14)

Sec. 2-14-66. - Impervious surfaces and mode of application.

- (a) Fertilizer shall not be applied, spilled, or otherwise deposited on any impervious surfaces. Any fertilizer applied, spilled, or deposited, either intentionally or accidentally, on any impervious surface shall be immediately and completely removed to the greatest extent practicable. Fertilizer released on an impervious surface must be immediately contained and either legally applied to turf or any other legal site, or returned to the original or other appropriate container. Fertilizer shall not be washed, swept, or blown off impervious surfaces into stormwater drains, ditches, drainage conveyances, surface waters, or roadways.
- (b) Spreader deflector shields are required when applying fertilizer by use of any broadcast or rotary

spreaders. Deflector shields must be positioned such that fertilizer granules are deflected away from all impervious surfaces and surface waters.

(Ord. No. 14-41, § 37, 10-7-14)

Sec. 2-14-67. - Fertilizer-free zones.

Fertilizer shall not be applied within ten (10) feet from the top of bank of any surface water, landward edge of the top of a seawall, designated wetland, or wetland as defined by FDEP (Chapter 62-340, Florida Administrative Code, as may be amended or superseded).

(Ord. No. 14-41, § 37, 10-7-14)

Sec. 2-14-68. - Management of grass clippings and vegetative material.

Grass clippings, vegetative material, and/or vegetative debris shall not, either intentionally or accidentally, be washed, swept, blown, or otherwise deposited into stormwater drains, ditches, drainage conveyances, surface waters, or roadways.

(Ord. No. 14-41, § 37, 10-7-14)

Sec. 2-14-69. - Exemptions.

The provisions set forth in subsection 2-14-64(a) and section 2-14-65 of this chapter shall not apply to the following:

- (a) Golf courses. For all golf courses, the provisions of the FDEP document, entitled "BMPs for the Enhancement of Environmental Quality on Florida Golf Courses, January 2007", as updated, are required and shall be followed when applying fertilizer to golf courses.
- (b) Specialized turf managers are required to follow the provisions of the "Florida Green Industries Best Management Practices for Protection of Water Resources in Florida, December 2008", as updated, for turf and landscape plants.
- (c) Bona fide farm operations as defined in the Florida Right to Farm Act, Section 823.14, Florida Statutes.
- (d) Other properties not subject to or covered under the Florida Right to Farm Act that have pastures used for grazing livestock.
- (e) Vegetable gardens, owned by individual property owners or a community, provided that fertilizer application rates do not exceed UF/IFAS recommendations according to SP103 Florida Vegetable Gardening Guide, December 2008, as updated.
- (f) Yard waste compost, mulches, or other similar materials that are primarily organic in nature and are applied to improve the physical condition of the soil.
- (g) Tree trunk injection fertilization treatments that are performed by a certified arborist.
- (h) Fertilizer made or produced by the county from sewage.

(Ord. No. 14-41, § 37, 10-7-14)

Sec. 2-14-70. - Certification and training.

- (a) All commercial and institutional applicators within the county shall obtain the limited certification for urban landscape fertilizer application provided for under Section 482.1562, Florida Statutes, within three hundred sixty-five (365) days of adoption of this chapter, or within ninety (90) days of initial employment, whichever occurs later. Applicators are required to keep a copy of such certificate with them during application activities and shall present the certificate to any authorized official of the county, upon request.
- (b) All site supervisors and managers of professional landscape maintenance companies, as well as

SECTION F

government and institutional landscape supervisors, shall abide by and successfully complete an approved best management practices training program within five hundred forty-five (545) days of adoption of this chapter. Upon successful completion, a certificate of completion will be provided. Landscape maintenance staff are required to keep a copy of such certificate with them during landscape maintenance activities and shall present the certificate to any authorized official of the county, upon request.

- (c) Employees of lawn and landscape maintenance companies who are not site supervisors, managers or clerical personnel shall also be trained in BMPs through an approved best management practices training program or by the company or a contractor of the company. The training shall also include the more stringent requirements set forth in sections 2-14-62 through 2-14-71 of this chapter. Training may be provided by a certified site supervisor or manager employed by the company. Training shall be required of all personnel of such companies within five hundred forty-five (545) days of adoption of this chapter, or within ninety (90) days of initial employment, whichever occurs later. Prior to the successful completion of said program, each employee shall work under the direct physical supervision of a certified landscape maintenance employee. Landscape maintenance companies shall maintain written records of compliance with this provision and shall present training records to any authorized official of the county, upon request. Certifications issued to employees of lawn and landscape maintenance companies by other Florida counties and cities with equivalent approved best management practices training program requirements will be recognized by the county as meeting the certification and training requirements of this subsection.
- (d) All commercial and institutional applicators, site supervisors and managers of professional landscape maintenance companies, government and institutional landscape supervisors, and any employee of a lawn and landscape maintenance company shall abide by best management practices for which they have been trained or certified, as well as the provisions of this chapter.
- (e) A vehicle decal issued by the county indicating that the company is in compliance with the training and certification requirements of this section shall be affixed and maintained on the exterior of all vehicles and/or trailers used by the company in connection with landscape maintenance activities and/or the application of fertilizer within the area regulated by this chapter. The vehicle and trailer decals shall be provided by the county upon submittal of demonstration of compliance by the company with the certification and training requirements of this section.

(Ord. No. 14-41, § 37, 10-7-14)

Sec. 2-14-71. - Enforcement.

- (a) Violations of this chapter may be prosecuted and punished as provided in Section 125.69, Florida Statutes. Each day any violation exists shall constitute a separate offense.
- (b) This chapter may be enforced in accordance with Chapter 162, Florida Statutes, and section 2-2-25 of the Manatee County Code of Ordinances.
- (c) Notwithstanding any other provision of this chapter, the county may also enforce this chapter by actions at law or in equity for damages and injunctive relief. In the event the county prevails in any such action, the county shall be entitled to an award of costs and attorney's fees.

(Ord. No. 14-41, § 37, 10-7-14)

Sec. 2-14-72. - Recommendations.

- (a) A voluntary six-foot low-maintenance, no-mow zone is recommended from those areas described as fertilizer-free zones in section 2-14-67 in order to reduce the potential for fertilizer residue entering adjacent water bodies and wetlands. A swale/berm system is recommended for installation at the landward edge of this low-maintenance zone to capture and filter runoff. No vegetative material shall be deposited or left remaining in the low-maintenance zone or in the water body or wetland. Care should be

SECTION F

taken to prevent the overspray of aquatic weed products in the low-maintenance zone.

- (b) It is recommended that the application of fertilizer for properties using reclaimed water service be reduced in accordance with the nutrient level contained in the reclaimed water. This information is available from the county administrator.
- (c) The county recommends the establishment of training programs using Spanish-speaking certified BMP trainers.
- (d) The county recommends that private homeowners become familiar with and utilize the recommendations of the UF/IFAS Florida Yards and Neighborhoods program when applying fertilizer.

(Ord. No. 14-41, § 37, 10-7-14)

Sec. 2-14-73. - Territory embraced.

The provisions of this article shall embrace all territories within the legal boundaries of Manatee County, Florida, including incorporated and unincorporated areas, unless in conflict with or repealed by a municipal ordinance. In the event of such conflict or repeal, this article shall not be effective within the municipality.

(Ord. No. 14-41, § 37, 10-7-14)

Secs. 2-14-74—2-14-78. - Reserved.

SECTION G

DEFINITIONS

(For Construction Release Orders as a Stipulated Unit Cost Contract)

Whenever used in the Contract Documents, the following terms have the meaning indicated which are applicable to both the singular and plural thereof:

Application for Payment – When applicable, the form accepted by the Project Representative which is to be used by Contractor in requesting progress or final payments and which is to include such supporting documentation as is required by the Contract Documents.

Award - Acceptance of the Blanket Purchase Order from the person, firm, or corporation which in the Owner's sole and absolute judgment will under all circumstances best serve the public interest. Award shall be made in accordance with Chapter 2-26 of the Manatee County Code.

Bid Bond- An insurance agreement, accompanied by a monetary commitment, by which a third party (the Surety) accepts liability and guarantees that the Quoter will not withdraw the Quote.

Blanket Purchase Order – Agreement which specifies the term duration and references the Specifications to be utilized for the release orders.

Contract Price - The monies payable by County to Contractor under the Contract Documents as stated in the Contract.

Contract Time - The number of days or the date stated in the Blanket Release Order for the completion of the Work.

Contractor - The person, firm or corporation with whom County has entered into a Contract.

Days - All references to days are to be considered calendar days except as specified differently.

Defective - An adjective which when modifying the Work refers to work that is unsatisfactory, faulty or deficient, or does not conform to the Blanket Release Order, or does not meet the requirements of any inspection, reference standard, test or approval referred to in the Blanket Release Order, or has been damaged prior to County's recommendation of final payment (unless responsibility for the protection thereof has been assumed by County).

Drawings – If applicable, the drawings which show the character and Scope of the Work to be performed.

SECTION G

Effective Date of the Blanket Purchase Order - The date indicated in the body of the Blanket Purchase Order on which it becomes effective.

Emergencies: In emergencies affecting the safety or protection of persons or the work or property at the site or adjacent thereto, Contractor, without special instruction or authorization from County, is obligated to act to prevent threatened damage, injury or loss. Contractor shall give County prompt written notice if Contractor believes that any significant changes in the Work or variations from the awarded Blanket Release Order have been caused thereby. If County determines that a change is required

Excusable Delay - Any delay beyond the control and without the negligence of the Contractor, the County, or any other Contractor caused by events or circumstances such as, but not limited to, acts of God or of the public enemy, fires, floods, freight embargoes, acts of government other than County or epidemics. Labor disputes and above average rainfall shall give rise only to Excusable Delays.

Information (Pre-Bid/Pre Quote) Conference – A meeting held by the Purchasing Division with potential Bidders, prior to the opening of the solicitation, for the purpose of answering questions, clarifying ambiguities, and responding to general issues in order to establish a common basis for understanding all of the requirements of the solicitation, may result in the issuance of an Addendum.

Payment Bond – an instrument, issued by a Surety that guarantees that Subcontractors will be paid for labor expended on the Blanket Purchase Order.

Permits: Unless otherwise provided, Contractor shall obtain and pay for all construction permits and licenses. County shall assist Contractor, when necessary, in obtaining such permits and licenses. Contractor shall pay all governmental charges and inspection fees necessary for the prosecution of the Work.

Preconstruction Conference - Prior to starting the Work, a meeting may be scheduled by County, with Contractor to review the Work schedules, to establish procedures for and other submissions, for processing periodical pay estimates, and such other matters as may be pertinent to the Release Order.

Pre-operation Testing - All field inspections, installation checks, water tests, performance tests and necessary corrections required of Contractor to demonstrate that individual components of the Work have been properly constructed and do operate in accordance with the Contract Documents for their intended purposes.

Project - The total construction of which the Blanket Purchase Order Release Work is to be provided under the contracted documents.

Shop Drawings – When applicable, all drawings, diagrams, illustrations, schedules and other data which are specifically prepared by or for Contractor to illustrate some portion of the Work and all illustrations, brochures, standard schedules, performance charts,

SECTION G

instructions, diagrams and other information prepared by a supplier and submitted by Contractor to illustrate material or equipment for some portion of the Work.

Special Provisions: As required to define work or procedures not covered in the standard specifications, and as necessary to supplement or modify items in the standard Specifications

Specifications - Those portions of the contract documents consisting of written technical descriptions of materials, equipment, construction systems, standards and workmanship as applied to the Work and certain administrative details applicable thereto.

Subcontractor - An individual or corporation having a direct contact with Contractor or with any other subcontractor for the performance of a part of the Work at the site. Such person or firm has contractual relations with the Contractor, not with the County.

Supplier - A manufacturer, fabricator, Supplier, distributor, materialman or vendor.

Surety - A pledge or guarantee by an insurance company, bank, individual or corporation on behalf of the Quoter which protects against default or failure of the principal to satisfy the contractual obligations.

Underground Facilities - All pipelines, conduits, ducts, cables, wires, manholes, vaults, tanks, tunnels or other such facilities or attachments and any encasement containing such facilities which have been installed underground to furnish any of the following services or materials: electricity, gases, steam, liquid petroleum products, telephone or other communications, cable television, sewage and drainage removal, traffic or other control systems or water.

Unit Price Work - Work to be paid for on the basis of unit prices.

Work - The entire completed construction or the various separately identifiable parts thereof required to be furnished under the awarded Blanket Purchase Order Release Orders. Work is the result of performing services, furnishing labor and furnishing and incorporating materials and equipment into the construction, all as required by the Blanket Purchase Order Release Order.

END OF SECTION

BID FORM

For: IFB #16-0212-DS ROAD BUILDING MATERIALS AND SERVICES

We, the undersigned, hereby declare that we have carefully reviewed the Invitation for Bid Documents in their entirety and with full knowledge and understanding of the aforementioned herewith submit this Bid, completely meeting each and every specification, term, and condition contained therein.

We understand that the bid documents in their entirety shall be made a part of any agreement or contract between Manatee County and the successful bidder(s). Failure to comply shall result in contract default, whereupon, the defaulting Contractor shall be required to pay for any and all re-procurement costs, damages, and/ or attorney fees as incurred by the County.

We understand that all of the items on the following pages may or may not be used during this contract and my bid price (for each item specified) shall establish a fixed unit price for the release order work as required.

As bidder, we understand that the Invitation for Bid documents, in its entirety, including but not limited to, all specifications, terms, and conditions shall be made a part of any resulting agreement between Manatee County and the successful bidder.

Communications concerning this bid shall be addressed as follows: **(Complete all fields)**

Bidder's Name: _____

Mailing Address: _____

Telephone: () _____ Fax: () _____

EMERGENCY #: () _____ (available 24/7)

Email Address: _____

Acknowledge Addendum No. _____ Dated: _____ Acknowledge Addendum No. _____ Dated: _____

Acknowledge Addendum No. _____ Dated: _____ Acknowledge Addendum No. _____ Dated: _____

Acknowledge Addendum No. _____ Dated: _____ Acknowledge Addendum No. _____ Dated: _____

Environmental Sustainability – The Company submitting this bid has an environmental sustainability initiative currently in place. Yes No If yes, the bidder shall submit a summary of their environmental sustainability initiative along with their bid.

Authorized Signature(s): _____

Name and Title of Above Signer(s): _____

Date: _____

BID FORM IFB# 16-0212-DS ROAD BUILDING MATERIALS AND SERVICES		
SECTION I - AGGREGATE		(MATERIAL ONLY)
I.1 CRUSHED STONE #4 (FDOT 901)		
LOCATION OF VENDOR'S PLANT (full address):		
DISTANCE OF VENDOR'S PLANT TO MANATEE COUNTY YARD <u>4680 66th Street West, Bradenton FL 34210</u>		/ MILES
PRICE PICKED UP FROM (F.O.B) VENDOR'S PLANT:		/ PER TON
PRICE VENDOR DELIVERED TO MANATEE COUNTY YARD		
	4680 66th Street West, Bradenton FL 34210	/ PER TON
	5511 39th Street East, Bradenton FL 34203	/ PER TON
	36650 Arcadia Avenue, Myakka FL 34251 (MYAKKA YARD)	/ PER TON
	8500 69th Street East, Palmetto FL 34221 (ERIE ROAD)	/ PER TON
DELIVERY DAYS AFTER RECEIPT OF ORDER:		/ DAYS
I.2 CRUSHED STONE #57 (FDOT 901)		
LOCATION OF VENDOR'S PLANT:		
DISTANCE OF VENDOR'S PLANT TO MANATEE COUNTY YARD <u>4680 66th Street West, Bradenton FL 34210</u>		/ MILES
PRICE F.O.B. VENDOR'S PLANT:		/ PER TON
PRICE VENDOR DELIVERED TO MANATEE COUNTY YARD		
	4680 66th Street West, Bradenton FL 34210	/ PER TON
	5511 39th Street East, Bradenton FL 34203	/ PER TON

BIDDER: _____

AUTHORIZED BY: _____

SECTION I

BID FORM		
IFB# 16-0212-DS		
ROAD BUILDING MATERIALS AND SERVICES		
SECTION I - AGGREGATE		(MATERIAL ONLY)
	36650 Arcadia Avenue Myakka FL 34251 (MYAKKA YARD)	/ PER TON
	8500 69th Street East, Palmetto FL 34221 (ERIE ROAD)	/ PER TON
	2908 12th Street Court East, Bradenton FL 34208	/ PER TON
DELIVERY DAYS AFTER RECEIPT OF ORDER:		/ DAYS
I.3 COARSE AGGREGATE 3/8" (FDOT 901)		
LOCATION OF VENDOR'S PLANT:		
DISTANCE OF VENDOR'S PLANT TO MANATEE COUNTY YARD <u>4680 66th Street West, Bradenton FL 34210</u>		/ MILES
PRICE F.O.B. VENDOR'S PLANT:		/ PER TON
PRICE VENDOR DELIVERED TO MANATEE COUNTY YARD		
	4680 66th Street West, Bradenton FL 34210	/ PER TON
	5511 39th Street East, Bradenton FL 34203	/ PER TON
	36650 Arcadia Avenue Myakka FL 34251 (MYAKKA YARD)	/ PER TON
	8500 69th Street East, Palmetto FL 34221 (ERIE ROAD)	/ PER TON

BIDDER: _____

AUTHORIZED BY: _____

SECTION I

2 of 21

10/28/2015

BID FORM		
IFB# 16-0212-DS		
ROAD BUILDING MATERIALS AND SERVICES		
SECTION I - AGGREGATE		(MATERIAL ONLY)
DELIVERY DAYS AFTER RECEIPT OF ORDER:		/ DAYS
I.4 COARSE MASONRY SAND (ASTM C144)		
LOCATION OF VENDOR'S PLANT:		
DISTANCE OF VENDOR'S PLANT TO MANATEE COUNTY YARD <u>4680 66th Street West, Bradenton FL 34210</u>		/ MILES
PRICE F.O.B. VENDOR'S PLANT:		/ PER TON
PRICE VENDOR DELIVERED TO MANATEE COUNTY YARD		
	4680 66th Street West, Bradenton FL 34210	/ PER TON
	5511 39th Street East, Bradenton FL 34203	/ PER TON
	36650 Arcadia Avenue Myakka FL 34251 (MYAKKA YARD)	/ PER TON
	8500 69th Street East, Palmetto FL 34221 (ERIE ROAD)	/ PER TON
DELIVERY DAYS AFTER RECEIPT OF ORDER:		/ DAYS
I.4a TACK SAND (FDOT 902-6)		
LOCATION OF VENDOR'S PLANT:		
DISTANCE OF VENDOR'S PLANT TO MANATEE COUNTY YARD <u>4680 66th Street West, Bradenton FL 34210</u>		/ MILES
PRICE F.O.B. VENDOR'S PLANT:		/ PER TON

BIDDER: _____

AUTHORIZED BY: _____

BID FORM		
IFB# 16-0212-DS		
ROAD BUILDING MATERIALS AND SERVICES		
SECTION I - AGGREGATE		(MATERIAL ONLY)
PRICE VENDOR DELIVERED TO MANATEE COUNTY YARD		
	4680 66th Street West, Bradenton FL 34210	/ PER TON
	5511 39th Street East, Bradenton FL 34203	/ PER TON
	36650 Arcadia Avenue Myakka FL 34251 (MYAKKA YARD)	/ PER TON
	8500 69th Street East, Palmetto FL 34221 (ERIE ROAD)	/ PER TON
DELIVERY DAYS AFTER RECEIPT OF ORDER:		/ DAYS
I.5 CONCRETE SAND (ASTM C33)		
LOCATION OF VENDOR'S PLANT:		
DISTANCE OF VENDOR'S PLANT TO MANATEE COUNTY YARD <u>4680 66th Street West, Bradenton FL 34210</u>		/ MILES
PRICE F.O.B. VENDOR'S PLANT:		/ PER TON
PRICE VENDOR DELIVERED TO MANATEE COUNTY YARD:		
	4680 66th Street West, Bradenton FL 34210	/ PER TON
	5511 39th Street East, Bradenton FL 34203	/ PER TON
	36650 Arcadia Avenue Myakka FL 34251 (MYAKKA YARD)	/ PER TON

BIDDER: _____

AUTHORIZED BY: _____

SECTION I

4 of 21

10/28/2015

BID FORM				
IFB# 16-0212-DS				
ROAD BUILDING MATERIALS AND SERVICES				
SECTION I - AGGREGATE			(MATERIAL ONLY)	
		8500 69th Street East, Palmetto FL 34221 (ERIE ROAD)	/ PER TON	
		2908 12th Street Court East, Bradenton FL 34208	/ PER TON	
DELIVERY DAYS AFTER RECEIPT OF ORDER:			/ DAYS	
I.6 FILL DIRT ((CUBIC YARD) - (FDOT 120-2)				
PRICE VENDOR DELIVERED TO JOB SITE	ZONE 1	0 - 2,000 CY	/ PER CY	
		OVER 2,000 CY	/ PER CY	
	ZONE 2	0 - 2,000 CY	/ PER CY	
		OVER 2,000 CY	/ PER CY	
	ZONE 3	0 - 2,000 CY	/ PER CY	
		OVER 2,000 CY	/ PER CY	
	ZONE 4A	0 - 2,000 CY	/ PER CY	
		OVER 2,000 CY	/ PER CY	
	ZONE 4B	0 - 2,000 CY	/ PER CY	
		OVER 2,000 CY	/ PER CY	
	ZONE 5	0 - 2,000 CY	/ PER CY	
		OVER 2,000 CY	/ PER CY	
	DELIVERY DAYS AFTER RECEIPT OF ORDER:			/ DAYS
	I.7 FILL DIRT (TON) (FDOT 120-2)			
LOCATION OF VENDOR'S PLANT:				

BIDDER: _____

AUTHORIZED BY: _____

BID FORM				
IFB# 16-0212-DS				
ROAD BUILDING MATERIALS AND SERVICES				
SECTION I - AGGREGATE			(MATERIAL ONLY)	
PRICE F.O.B. VENDOR'S PLANT:			/ PER TON	
PRICE VENDOR DELIVERED TO JOB SITE	ZONE 1	0 - 500 TONS	/ PER TON	
		OVER 500 TONS	/ PER TON	
	ZONE 2	0 - 500 TONS	/ PER TON	
		OVER 500 TONS	/ PER TON	
	ZONE 3	0 - 500 TONS	/ PER TON	
		OVER 500 TONS	/ PER TON	
	ZONE 4A	0 - 500 TONS	/ PER TON	
		OVER 500 TONS	/ PER TON	
	ZONE 4B	0 - 500 TONS	/ PER TON	
		OVER 500 TONS	/ PER TON	
	ZONE 5	0 - 500 TONS	/ PER TON	
		OVER 500 TONS	/ PER TON	
	DELIVERY DAYS AFTER RECEIPT OF ORDER:			/ DAYS
	I.8 SHELL BASE BANK RUN SHELL (FDOT 911)			
LOCATION OF VENDOR'S PLANT:				

BIDDER: _____

AUTHORIZED BY: _____

SECTION I

BID FORM				
IFB# 16-0212-DS				
ROAD BUILDING MATERIALS AND SERVICES				
SECTION I - AGGREGATE			(MATERIAL ONLY)	
DISTANCE OF VENDOR'S PLANT TO MANATEE COUNTY YARD <u>4680 66th Street West, Bradenton FL 34210</u>			/ MILES	
PRICE F.O.B. VENDOR'S PLANT:			/ PER TON	
PRICE VENDOR DELIVER TO MANATEE COUNTY YARD: 4680 66th Street West, Bradenton, FL 34210			/ PER TON	
PRICE VENDOR DELIVERED TO JOB SITE	ZONE 1	0 - 500 TONS	/ PER TON	
		OVER 500 TONS	/ PER TON	
	ZONE 2	0 - 500 TONS	/ PER TON	
		OVER 500 TONS	/ PER TON	
	ZONE 3	0 - 500 TONS	/ PER TON	
		OVER 500 TONS	/ PER TON	
	ZONE 4A	0 - 500 TONS	/ PER TON	
		OVER 500 TONS	/ PER TON	
	ZONE 4B	0 - 500 TONS	/ PER TON	
		OVER 500 TONS	/ PER TON	
	ZONE 5	0 - 500 TONS	/ PER TON	
		OVER 500 TONS	/ PER TON	
	DELIVERY DAYS AFTER RECEIPT OF ORDER:			/ DAYS
	1.9 SHELL BASE BANK RUN SHELL @ <16% MOISTURE CONTENT (FDOT 911)			

BIDDER: _____

AUTHORIZED BY: _____

BID FORM			
IFB# 16-0212-DS			
ROAD BUILDING MATERIALS AND SERVICES			
SECTION I - AGGREGATE		(MATERIAL ONLY)	
LOCATION OF VENDOR'S PLANT:			
DISTANCE OF VENDOR'S PLANT TO MANATEE COUNTY YARD <u>4680 66th Street West, Bradenton FL 34210</u>		/ MILES	
PRICE F.O.B. VENDOR'S PLANT:		/ PER TON	
PRICE VENDOR DELIVER TO MANATEE COUNTY YARD		/ PER TON	
	4680 66th Street West, Bradenton FL 34210	/ PER TON	
	5511 39th Street East, Bradenton FL 34203	/ PER TON	
	36650 Arcadia Avenue Myakka FL 34251 (MYAKKA YARD)	/ PER TON	
	8500 69th Street East, Palmetto FL 34221 (ERIE ROAD)	/ PER TON	
	2908 12th Street Court East, Bradenton FL 34208	/ PER TON	
	ZONE 1	0 - 500 TONS	/ PER TON
		OVER 500 TONS	/ PER TON
	ZONE 2	0 - 500 TONS	/ PER TON
		OVER 500 TONS	/ PER TON

BIDDER: _____

AUTHORIZED BY: _____

SECTION I

8 of 21

10/28/2015

BID FORM			
IFB# 16-0212-DS			
ROAD BUILDING MATERIALS AND SERVICES			
SECTION I - AGGREGATE			(MATERIAL ONLY)
PRICE VENDOR DELIVERED TO JOB SITE	ZONE 3	0 - 500 TONS	/ PER TON
		OVER 500 TONS	/ PER TON
	ZONE 4A	0 - 500 TONS	/ PER TON
		OVER 500 TONS	/ PER TON
	ZONE 4B	0 - 500 TONS	/ PER TON
		OVER 500 TONS	/ PER TON
	ZONE 5	0 - 500 TONS	/ PER TON
		OVER 500 TONS	/ PER TON
DELIVERY DAYS AFTER RECEIPT OF ORDER:			/ DAYS
I.10 SUBBASE STABILIZATION MATERIALS (FDOT 914)			
LOCATION OF VENDOR'S PLANT:			
PRICE VENDOR DELIVER TO MANATEE COUNTY YARD 4680 66th Street West, Bradenton, FL 34210			/ MILES
PRICE F.O.B. VENDOR'S PLANT:			/ PER TON

BIDDER: _____

AUTHORIZED BY: _____

SECTION I

BID FORM				
IFB# 16-0212-DS				
ROAD BUILDING MATERIALS AND SERVICES				
SECTION I - AGGREGATE			(MATERIAL ONLY)	
PRICE VENDOR DELIVERED TO JOB SITE	ZONE 1	0 - 500 TONS	/ PER TON	
		OVER 500 TONS	/ PER TON	
	ZONE 2	0 - 500 TONS	/ PER TON	
		OVER 500 TONS	/ PER TON	
	ZONE 3	0 - 500 TONS	/ PER TON	
		OVER 500 TONS	/ PER TON	
	ZONE 4A	0 - 500 TONS	/ PER TON	
		OVER 500 TONS	/ PER TON	
	ZONE 4B	0 - 500 TONS	/ PER TON	
		OVER 500 TONS	/ PER TON	
	ZONE 5	0 - 500 TONS	/ PER TON	
		OVER 500 TONS	/ PER TON	
	DELIVERY DAYS AFTER RECEIPT OF ORDER:			/ DAYS
	I.11 WASHED SHELL 1/2" (FDOT 913)			
LOCATION OF VENDOR'S PLANT:				
DISTANCE OF VENDOR'S PLANT TO MANATEE COUNTY YARD : 4680 66th Street West, Bradenton FL 34210			/ MILES	

BIDDER: _____

AUTHORIZED BY: _____

SECTION I

10 of 21

10/28/2015

BID FORM			
IFB# 16-0212-DS			
ROAD BUILDING MATERIALS AND SERVICES			
SECTION I - AGGREGATE		(MATERIAL ONLY)	
DISTANCE OF VENDOR'S PLANT TO MANATEE COUNTY YARD:		/ MILES	
PRICE F.O.B. VENDOR'S PLANT:		/ PER TON	
PRICE VENDOR DELIVER TO MANATEE COUNTY YARD		/ PER TON	
	4680 66th Street West, Bradenton FL 34210	/ PER TON	
	5511 39th Street East, Bradenton FL 34203	/ PER TON	
	36650 Arcadia Avenue Myakka FL 34251 (MYAKKA YARD)	/ PER TON	
	8500 69th Street East, Palmetto FL 34221 (ERIE ROAD)	/ PER TON	
	2908 12th Street Court East, Bradenton FL 34208	/ PER TON	
	ZONE 1	0 - 500 TONS	/ PER TON
		OVER 500 TONS	/ PER TON
	ZONE 2	0 - 500 TONS	/ PER TON
		OVER 500 TONS	/ PER TON

BIDDER: _____

AUTHORIZED BY: _____

BID FORM			
IFB# 16-0212-DS			
ROAD BUILDING MATERIALS AND SERVICES			
SECTION I - AGGREGATE			(MATERIAL ONLY)
PRICE VENDOR DELIVERED TO JOB SITE	ZONE 3	0 - 500 TONS	/ PER TON
		OVER 500 TONS	/ PER TON
	ZONE 4A	0 - 500 TONS	/ PER TON
		OVER 500 TONS	/ PER TON
	ZONE 4B	0 - 500 TONS	/ PER TON
		OVER 500 TONS	/ PER TON
	ZONE 5	0 - 500 TONS	/ PER TON
		OVER 500 TONS	/ PER TON
DELIVERY DAYS AFTER RECEIPT OF ORDER:			/ DAYS
I.12 WASHED SHELL 1" (FDOT 913)			
LOCATION OF VENDOR'S PLANT:			
DISTANCE OF VENDOR'S PLANT TO MANATEE COUNTY YARD 4680 66th Street West, Bradenton FL 34210			/ MILES
PRICE F.O.B. VENDOR'S PLANT:			/ PER TON
PRICE VENDOR DELIVER TO MANATEE COUNTY YARD			/ PER TON
	4680 66th Street West, Bradenton FL 34210		/ PER TON
	5511 39th Street East, Bradenton FL 34203		/ PER TON

BIDDER: _____

AUTHORIZED BY: _____

BID FORM				
IFB# 16-0212-DS				
ROAD BUILDING MATERIALS AND SERVICES				
SECTION I - AGGREGATE			(MATERIAL ONLY)	
		36650 Arcadia Avenue Myakka FL 34251 (MYAKKA YARD)	/ PER TON	
		8500 69th Street East, Palmetto FL 34221 (ERIE ROAD)	/ PER TON	
		2908 12th Street Court East, Bradenton FL 34208	/ PER TON	
PRICE VENDOR DELIVERED TO JOB SITE	ZONE 1	0 - 500 TONS	/ PER TON	
		OVER 500 TONS	/ PER TON	
	ZONE 2	0 - 500 TONS	/ PER TON	
		OVER 500 TONS	/ PER TON	
	ZONE 3	0 - 500 TONS	/ PER TON	
		OVER 500 TONS	/ PER TON	
	ZONE 4A	0 - 500 TONS	/ PER TON	
		OVER 500 TONS	/ PER TON	
	ZONE 4B	0 - 500 TONS	/ PER TON	
		OVER 500 TONS	/ PER TON	
	ZONE 5	0 - 500 TONS	/ PER TON	
		OVER 500 TONS	/ PER TON	
	DELIVERY DAYS AFTER RECEIPT OF ORDER:			/ DAYS
	I.13 WASHED SHELL 3" (FDOT 913)			

BIDDER: _____

AUTHORIZED BY: _____

BID FORM			
IFB# 16-0212-DS			
ROAD BUILDING MATERIALS AND SERVICES			
SECTION I - AGGREGATE		(MATERIAL ONLY)	
LOCATION OF VENDOR'S PLANT:			
DISTANCE OF VENDOR'S PLANT TO MANATEE COUNTY YARD 4680 66th Street West, Bradenton FL 34210		/ MILES	
PRICE F.O.B. VENDOR'S PLANT:		/ PER TON	
PRICE VENDOR DELIVER TO MANATEE COUNTY YARD		/ PER TON	
	4680 66th Street West, Bradenton FL 34210	/ PER TON	
	5511 39th Street East, Bradenton FL 34203	/ PER TON	
	36650 Arcadia Avenue Myakka FL 34251 (MYAKKA YARD)	/ PER TON	
	8500 69th Street East, Palmetto FL 34221 (ERIE ROAD)	/ PER TON	
	2908 12th Street Court East, Bradenton FL 34208	/ PER TON	
	ZONE 1	0 - 500 TONS	/ PER TON
		OVER 500 TONS	/ PER TON
	ZONE 2	0 - 500 TONS	/ PER TON
		OVER 500 TONS	/ PER TON

BIDDER: _____

AUTHORIZED BY: _____

BID FORM			
IFB# 16-0212-DS			
ROAD BUILDING MATERIALS AND SERVICES			
SECTION I - AGGREGATE			(MATERIAL ONLY)
PRICE VENDOR DELIVERED TO JOB SITE	ZONE 3	0 - 500 TONS	/ PER TON
		OVER 500 TONS	/ PER TON
	ZONE 4A	0 - 500 TONS	/ PER TON
		OVER 500 TONS	/ PER TON
	ZONE 4B	0 - 500 TONS	/ PER TON
		OVER 500 TONS	/ PER TON
	ZONE 5	0 - 500 TONS	/ PER TON
		OVER 500 TONS	/ PER TON
DELIVERY DAYS AFTER RECEIPT OF ORDER:			/ DAYS
I.14 SHELL SCREENINGS TDS 1/2" (FDOT 913)			
LOCATION OF VENDOR'S PLANT:			
DISTANCE OF VENDOR'S PLANT TO MANATEE COUNTY YARD 4680 66th Street West, Bradenton FL 34210			/ MILES
PRICE F.O.B. VENDOR'S PLANT:			/ PER TON
PRICE VENDOR DELIVER TO MANATEE COUNTY YARD			/ PER TON
		4680 66th Street West, Bradenton FL 34210	/ PER TON

BIDDER: _____

AUTHORIZED BY: _____

SECTION I

15 of 21

10/28/2015

BID FORM			
IFB# 16-0212-DS			
ROAD BUILDING MATERIALS AND SERVICES			
SECTION I - AGGREGATE			(MATERIAL ONLY)
		5511 39th Street East, Bradenton FL 34203	/ PER TON
		36650 Arcadia Avenue Myakka FL 34251 (MYAKKA YARD)	/ PER TON
		8500 69th Street East, Palmetto FL 34221 (ERIE ROAD)	/ PER TON
		2908 12th Street Court East, Bradenton FL 34208	/ PER TON
PRICE VENDOR DELIVERED TO JOB SITE	ZONE 1	0 - 500 TONS	/ PER TON
		OVER 500 TONS	/ PER TON
	ZONE 2	0 - 500 TONS	/ PER TON
		OVER 500 TONS	/ PER TON
	ZONE 3	0 - 500 TONS	/ PER TON
		OVER 500 TONS	/ PER TON
	ZONE 4A	0 - 500 TONS	/ PER TON
		OVER 500 TONS	/ PER TON
	ZONE 4B	0 - 500 TONS	/ PER TON
		OVER 500 TONS	/ PER TON

BIDDER: _____

AUTHORIZED BY: _____

BID FORM			
IFB# 16-0212-DS			
ROAD BUILDING MATERIALS AND SERVICES			
SECTION I - AGGREGATE			(MATERIAL ONLY)
	ZONE 5	0 - 500 TONS	/ PER TON
		OVER 500 TONS	/ PER TON
DELIVERY DAYS AFTER RECEIPT OF ORDER:			/ DAYS
I.15	LIMEROCK BASE MATERIAL (FDOT SPEC 2010 SECTION 911)		
LOCATION OF VENDOR'S PLANT:			
DISTANCE OF VENDOR'S PLANT TO MANATEE COUNTY YARD 4680 66th Street West, Bradenton , FL 34210			/ MILES
PRICE F.O.B. VENDOR'S PLANT:			/ PER TON
		<u>4680 66th Street West, Bradenton FL 34210</u>	/ PER TON
	ZONE 1	0 - 500 TONS	/ PER TON
		OVER 500 TONS	/ PER TON
	ZONE 2	0 - 500 TONS	/ PER TON
		OVER 500 TONS	/ PER TON

BIDDER: _____

AUTHORIZED BY: _____

SECTION I

17 of 21

10/28/2015

BID FORM			
IFB# 16-0212-DS			
ROAD BUILDING MATERIALS AND SERVICES			
SECTION I - AGGREGATE			(MATERIAL ONLY)
PRICE VENDOR DELIVERED TO JOB SITE	ZONE 3	0 - 500 TONS	/ PER TON
		OVER 500 TONS	/ PER TON
	ZONE 4A	0 - 500 TONS	/ PER TON
		OVER 500 TONS	/ PER TON
	ZONE 4B	0 - 500 TONS	/ PER TON
		OVER 500 TONS	/ PER TON
	ZONE 5	0 - 500 TONS	/ PER TON
		OVER 500 TONS	/ PER TON
DELIVERY DAYS AFTER RECEIPT OF ORDER:			/ DAYS
I.16	CRUSHED CONCRETE AGGREGATE BASE MATERIALS (see specification)		
LOCATION OF VENDOR'S PLANT:			
DISTANCE OF VENDOR'S PLANT TO MANATEE COUNTY YARD 4680 66th Street West, Bradenton FL 34210			/ MILES
DISTANCE OF VENDOR'S PLANT TO MANATEE COUNTY YARD (full address)			/MILES
PRICE PICK UP (F.O.B.) VENDOR'S PLANT:			/ PER TON
PRICE VENDOR DELIVER TO MANATEE COUNTY YARD 4680 66th Street West, Bradenton, FL 34210			/ PER TON

BIDDER: _____

AUTHORIZED BY: _____

SECTION I

18 of 21

10/28/2015

BID FORM				
IFB# 16-0212-DS				
ROAD BUILDING MATERIALS AND SERVICES				
SECTION I - AGGREGATE			(MATERIAL ONLY)	
PRICE VENDOR DELIVERED TO JOB SITE	ZONE 1	0 - 500 TONS	/ PER TON	
		OVER 500 TONS	/ PER TON	
	ZONE 2	0 - 500 TONS	/ PER TON	
		OVER 500 TONS	/ PER TON	
	ZONE 3	0 - 500 TONS	/ PER TON	
		OVER 500 TONS	/ PER TON	
	ZONE 4A	0 - 500 TONS	/ PER TON	
		OVER 500 TONS	/ PER TON	
	ZONE 4B	0 - 500 TONS	/ PER TON	
		OVER 500 TONS	/ PER TON	
	ZONE 5	0 - 500 TONS	/ PER TON	
		OVER 500 TONS	/ PER TON	
	DELIVERY DAYS AFTER RECEIPT OF ORDER:			/ DAYS
	I.17 GRADED AGGREGATE BASE (FDOT 204)			

BIDDER: _____

AUTHORIZED BY: _____

SECTION I

19 of 21

10/28/2015

BID FORM			
IFB# 16-0212-DS			
ROAD BUILDING MATERIALS AND SERVICES			
SECTION I - AGGREGATE			(MATERIAL ONLY)
LOCATION OF VENDOR'S PLANT:			
DISTANCE OF VENDOR'S PLANT TO MANATEE COUNTY YARD 4680 66th Street West, Bradenton, FL 34210			/ MILES
PRICE F.O.B. VENDOR'S PLANT:			/ PER TON
		<u>4680 66th Street West, Bradenton FL 34210</u>	/ PER TON
PRICE VENDOR DELIVERED TO JOB SITE	ZONE 1	0 - 500 TONS	/ PER TON
		OVER 500 TONS	/ PER TON
	ZONE 2	0 - 500 TONS	/ PER TON
		OVER 500 TONS	/ PER TON
	ZONE 3	0 - 500 TONS	/ PER TON
		OVER 500 TONS	/ PER TON
	ZONE 4A	0 - 500 TONS	/ PER TON
		OVER 500 TONS	/ PER TON
	ZONE 4B	0 - 500 TONS	/ PER TON
		OVER 500 TONS	/ PER TON

BIDDER: _____

AUTHORIZED BY: _____

BID FORM			
IFB# 16-0212-DS			
ROAD BUILDING MATERIALS AND SERVICES			
SECTION I - AGGREGATE		(MATERIAL ONLY)	
	ZONE 5	0 - 500 TONS	/ PER TON
		OVER 500 TONS	/ PER TON
DELIVERY DAYS AFTER RECEIPT OF ORDER:		/ DAYS	
I.18 #7 COARSE AGGREGATE 1/2" (FDOT 901)			
LOCATION OF VENDOR'S PLANT:			
DISTANCE OF VENDOR'S PLANT TO MANATEE COUNTY YARD <u>4680 66th Street West, Bradenton FL 34210</u>		/ MILES	
PRICE F.O.B. VENDOR'S PLANT:		/ PER TON	
PRICE VENDOR DELIVERED TO MANATEE COUNTY YARD:			
	4680 66th Street West, Bradenton FL 34210	/ PER TON	
	5511 39th Street East, Bradenton FL 34203	/ PER TON	
	36650 Arcadia Avenue Myakka FL 34251 (MYAKKA YARD)	/ PER TON	
	8500 69th Street East, Palmetto FL 34221 (ERIE ROAD)	/ PER TON	
DELIVERY DAYS AFTER RECEIPT OF ORDER:		/ DAYS	

BIDDER: _____

AUTHORIZED BY: _____

BID FORM
IFB # 16-0212-DS
ROAD BUILDING MATERIALS AND SERVICES

SECTION II - LIQUID ASPHALT		
		(MATERIAL ONLY)
II.1 ASPHALT EMULSION TYPE RS-1 (SPEC. FDOT 300)		
LOCATION OF VENDOR'S PLANT:		
DISTANCE OF VENDOR'S PLANT TO MANATEE COUNTY YARD:		/ MILES
PRICE F.O.B. VENDOR'S PLANT:		/ PER GAL
PRICE VENDOR DELIVER TO MANATEE COUNTY YARD		/ PER GAL
DELIVERY DAYS AFTER RECEIPT OF ORDER:		/ DAYS
II.2 ASPHALT EMULSION TYPE RS-2 (SPEC. FDOT 300)		
LOCATION OF VENDOR'S PLANT:		
DISTANCE OF VENDOR'S PLANT TO MANATEE COUNTY YARD:		/ MILES
PRICE F.O.B. VENDOR'S PLANT:		/ PER GAL
PRICE VENDOR DELIVER TO MANATEE COUNTY YARD		/ PER GAL
DELIVERY DAYS AFTER RECEIPT OF ORDER:		/ DAYS
II.3 EPRS (Emulsion Prime Type RS) (SPEC. FDOT 300)		
LOCATION OF VENDOR'S PLANT:		
DISTANCE OF VENDOR'S PLANT TO MANATEE COUNTY YARD:		/ MILES
PRICE F.O.B. VENDOR'S PLANT:		/ PER GAL
PRICE VENDOR DELIVER TO MANATEE COUNTY YARD		/ PER GAL
DELIVERY DAYS AFTER RECEIPT OF ORDER:		/ DAYS

BIDDER: _____

SECTION II

AUTHORIZED BY: _____

BID FORM
IFB # 16-0212-DS
ROAD BUILDING MATERIALS AND SERVICES

SECTION III - PAVEMENT BASE CONSTRUCTION		(MATERIAL and SERVICE)
III.1	SHAPE, MIX AND COMPACT MATERIALS FOR SUB-GRADE STABILIZATION OR EXISTING BASE - (Specification: F.D.O.T. Sections 200 thru 290 as applicable. Manatee County Standard 403 - 403.1)	
6" DEPTH	0 - 2,000 SY	/ PER SY
	2,001 - 10,000 SY	/ PER SY
	OVER 10,000 SY	/ PER SY
8" DEPTH	0 - 2,000 SY	/ PER SY
	2,001 - 10,000 SY	/ PER SY
	OVER 10,000 SY	/ PER SY
12" DEPTH	0 - 2,000 SY	/ PER SY
	2,001 - 10,000 SY	/ PER SY
	OVER 10,000 SY	/ PER SY
DELIVERY DAYS AFTER RECEIPT OF ORDER:		/ DAYS
III.2	PLACE, SHAPE, AND COMPACT SHELL, LIMEROCK, OR CRUSHED CONCRETE BASE, GRADED AGGREGATE - (Specification: F.D.O.T. Sections 200 and 290 as applicable Manatee County Standards 403 - 403.1)	
6" DEPTH	0 - 2,000 SY	/ PER SY
	2,001 - 10,000 SY	/ PER SY
	OVER 10,000 SY	/ PER SY
8" DEPTH	0 - 2,000 SY	/ PER SY
	2,001 - 10,000 SY	/ PER SY
	OVER 10,000 SY	/ PER SY
12" DEPTH	0 - 2,000 SY	/ PER SY
	2,001 - 10,000 SY	/ PER SY
	OVER 10,000 SY	/ PER SY
DELIVERY DAYS AFTER RECEIPT OF ORDER:		/ DAYS

BIDDER: _____

SECTION III

AUTHORIZED BY: _____

BID FORM
IFB # 16-0212-DS
ROAD BUILDING MATERIALS AND SERVICES

SECTION III - PAVEMENT BASE CONSTRUCTION

(MATERIAL and SERVICE)

III.3 PRIME AND MAT - Specification: Seal and Sand, (FDOT 300)

0 - 500 SY	/ PER SY
501 - 1,000 SY	/ PER SY
1,001 - 2,500 SY	/ PER SY
OVER 2,500 SY	/ PER SY
DELIVERY DAYS AFTER RECEIPT OF ORDER:	/ DAYS

III.4 EXCAVATION (DIRT REMOVAL) (see specification)

0 - 200 CY	/ PER CY
201 - 2,000 CY	/ PER CY
OVER 2,000 CY	/ PER CY
DELIVERY DAYS AFTER RECEIPT OF ORDER:	/ DAYS

III.4a SPECIAL EXCAVATION REMOVAL OF DELETERIOUS MATERIAL LOADING AND HAULING (see specification)

ZONE 1	0 - 200 CY	/ PER CY
	201 - 2,000 CY	/ PER CY
	OVER 2,000 CY	/ PER CY
ZONE 2	0 - 200 CY	/ PER CY
	201 - 2,000 CY	/ PER CY
	OVER 2,000 CY	/ PER CY
ZONE 3	0 - 200 CY	/ PER CY
	201 - 2,000 CY	/ PER CY
	OVER 2,000 CY	/ PER CY

BIDDER: _____

SECTION III

AUTHORIZED BY: _____

2 of 18

10/28/2015

BID FORM
IFB # 16-0212-DS
ROAD BUILDING MATERIALS AND SERVICES

SECTION III - PAVEMENT BASE CONSTRUCTION		(MATERIAL and SERVICE)	
	ZONE 4A	0 - 200 CY	/ PER CY
		201 - 2,000 CY	/ PER CY
		OVER 2,000 CY	/ PER CY
	ZONE 4B	0 - 200 CY	/ PER CY
		201 - 2,000 CY	/ PER CY
		OVER 2,000 CY	/ PER CY
	ZONE 5	0 - 200 CY	/ PER CY
		201 - 2,000 CY	/ PER CY
		OVER 2,000 CY	/ PER CY
DELIVERY DAYS AFTER RECEIPT OF ORDER:		/ DAYS	
III.5	GRADE AND SHAPE FORESLOPE, BACKSLOPE & PULLING OF DITCHES (see specification)		
	0 - 200 SY	/ PER SY	
	201 - 2,000 SY	/ PER SY	
	OVER 2,000 SY	/ PER SY	
DELIVERY DAYS AFTER RECEIPT OF ORDER:		/ DAYS	
III.6	TRAFFIC MAINTENANCE SIGNS AND BARRICADES RENTAL (FDOT 102)		
(A)	BARRICADES		
	TYPE A (without light)	/ PER UNIT DAY	
	TYPE II (without light) - 48" minimum length	/ PER UNIT DAY	
	TYPE III (without light) - 72" minimum length	/ PER UNIT DAY	

BIDDER: _____

SECTION III

AUTHORIZED BY: _____

3 of 18

10/28/2015

BID FORM IFB # 16-0212-DS ROAD BUILDING MATERIALS AND SERVICES		
SECTION III - PAVEMENT BASE CONSTRUCTION		(MATERIAL and SERVICE)
(B)	BARRICADE LIGHTS	
	TYPE A - FLASHING	/ PER UNIT DAY
	TYPE B - STEADY BURN	/ PER UNIT DAY
(C)	TRAFFIC BARRELS - ORANGE PLASTIC WITH REFLECTIVE COLLARS	
	18" DIAMETER x 48" HIGH MINIMUM	/ PER UNIT DAY
(D)	TRAFFIC CONES - ORANGE PLASTIC WITH REFLECTIVE COLLARS	
	24" HIGH	/ PER UNIT DAY
	36" HIGH	/ PER UNIT DAY
(E)	TRAFFIC SIGNS - REFLECTORIZED FACED WITH ENGINEERING GRADE OR BETTER MATERIAL. EXACT TYPE TO BE ORDERED TO FIT JOB SITE:	
	36" x 36"	/ PER UNIT DAY
	48" x 48"	/ PER UNIT DAY
	18" x 24"	/ PER UNIT DAY
	60" x 30"	/ PER UNIT DAY
	48" x 30"	/ PER UNIT DAY
(F)	ARROW BOARDS - SELF CONTAINED, TRAILER MOUNTED, 48"H x 60"W MINIMAL SIZE	
	ARROW(S) ONLY	/ PER UNIT DAY
	VARIABLE MESSAGE	/ PER UNIT DAY

BIDDER: _____

SECTION III

AUTHORIZED BY: _____

BID FORM		
IFB # 16-0212-DS		
ROAD BUILDING MATERIALS AND SERVICES		
SECTION III - PAVEMENT BASE CONSTRUCTION		(MATERIAL and SERVICE)
(G)	PRE-CAST CONCRETE TEMPORARY BARRIER WALL SECTIONS PER FLORIDA DOT INDEX NO. 415	
	PER SECTION - 12" MINIMUM LENGTH	/ PER UNIT DAY
	DELIVERY DAYS AFTER RECEIPT OF ORDER:	/ DAYS
III.7	FILL DIRT PLACING (PLACE, SHAPE, AND COMPACT FILL) (see specification)	
ZONE 1	0 - 200 CY	/ PER CY
	201 - 2,000 CY	/ PER CY
	OVER 2,000 CY	/ PER CY
ZONE 2	0 - 200 CY	/ PER CY
	201 - 2,000 CY	/ PER CY
	OVER 2,000 CY	/ PER CY
ZONE 3	0 - 200 CY	/ PER CY
	201 - 2,000 CY	/ PER CY
	OVER 2,000 CY	/ PER CY
ZONE 4A	0 - 200 CY	/ PER CY
	201 - 2,000 CY	/ PER CY
	OVER 2,000 CY	/ PER CY
ZONE 4B	0 - 200 CY	/ PER CY
	201 - 2,000 CY	/ PER CY
	OVER 2,000 CY	/ PER CY
ZONE 5	0 - 200 CY	/ PER CY
	201 - 2,000 CY	/ PER CY
	OVER 2,000 CY	/ PER CY
	DELIVERY DAYS AFTER RECEIPT OF ORDER:	/ DAYS

BIDDER: _____

SECTION III

AUTHORIZED BY: _____

BID FORM
IFB # 16-0212-DS
ROAD BUILDING MATERIALS AND SERVICES

SECTION III - PAVEMENT BASE CONSTRUCTION

(MATERIAL and SERVICE)

III.8 HYDRO SEEDING and HYDRO MULCHING (see III. 12 Water is a separate bid item) (see specification)

	ZONE 1	0 - 500 SY	/ PER SY
		501 - 5,000 SY	/ PER SY
		5,001 - 12,000 SY	/ PER SY
		12,001 - 22,000 SY	/ PER SY
		OVER 22,000 SY	/ PER SY
	ZONE 2	0 - 500 SY	/ PER SY
		501 - 5,000 SY	/ PER SY
		5,001 - 12,000 SY	/ PER SY
		12,001 - 22,000 SY	/ PER SY
		OVER 22,000 SY	/ PER SY
	ZONE 3	0 - 500 SY	/ PER SY
		501 - 5,000 SY	/ PER SY
		5,001 - 12,000 SY	/ PER SY
		12,001 - 22,000 SY	/ PER SY
		OVER 22,000 SY	/ PER SY
	ZONE 4A	0 - 500 SY	/ PER SY
		501 - 5,000 SY	/ PER SY
		5,001 - 12,000 SY	/ PER SY
		12,001 - 22,000 SY	/ PER SY
		OVER 22,000 SY	/ PER SY
	ZONE 4B	0 - 500 SY	/ PER SY
		501 - 5,000 SY	/ PER SY
		5,001 - 12,000 SY	/ PER SY
		12,001 - 22,000 SY	/ PER SY
		OVER 22,000 SY	/ PER SY

BIDDER: _____

SECTION III

AUTHORIZED BY: _____

6 of 18

10/28/2015

BID FORM IFB # 16-0212-DS ROAD BUILDING MATERIALS AND SERVICES			
SECTION III - PAVEMENT BASE CONSTRUCTION			(MATERIAL and SERVICE)
	ZONE 5	0 - 500 SY	/ PER SY
		501 - 5,000 SY	/ PER SY
		5,001 - 12,000 SY	/ PER SY
		12,001 - 22,000 SY	/ PER SY
		OVER 22,000 SY	/ PER SY
DELIVERY DAYS AFTER RECEIPT OF ORDER:			/ DAYS
III.9	SODDING - BAHIA (Water is a separate bid item) (see specification)		
	ZONE 1	0 - 50 SY	/ PER SY
		51 - 500 SY	/ PER SY
		OVER 500 SY	/ PER SY
	ZONE 2	0 - 50 SY	/ PER SY
		51 - 500 SY	/ PER SY
		OVER 500 SY	/ PER SY
	ZONE 3	0 - 50 SY	/ PER SY
		51 - 500 SY	/ PER SY
		OVER 500 SY	/ PER SY
	ZONE 4A	0 - 50 SY	/ PER SY
		51 - 500 SY	/ PER SY
		OVER 500 SY	/ PER SY
	ZONE 4B	0 - 50 SY	/ PER SY
		51 - 500 SY	/ PER SY
		OVER 500 SY	/ PER SY
	ZONE 5	0 - 50 SY	/ PER SY
		51 - 500 SY	/ PER SY
		OVER 500 SY	/ PER SY
DELIVERY DAYS AFTER RECEIPT OF ORDER:			/ DAYS

BIDDER: _____

SECTION III

AUTHORIZED BY: _____

7 of 18

BID FORM
IFB # 16-0212-DS
ROAD BUILDING MATERIALS AND SERVICES

SECTION III - PAVEMENT BASE CONSTRUCTION

(MATERIAL and SERVICE)

III.10 SODDING - ST. AUGUSTINE (Water is a separate bid item)
 (see specification)

	ZONE 1	0 - 50 SY	/ PER SY
		51 - 500 SY	/ PER SY
		OVER 500 SY	/ PER SY
	ZONE 2	0 - 50 SY	/ PER SY
		51 - 500 SY	/ PER SY
		OVER 500 SY	/ PER SY
	ZONE 3	0 - 50 SY	/ PER SY
		51 - 500 SY	/ PER SY
		OVER 500 SY	/ PER SY
	ZONE 4A	0 - 50 SY	/ PER SY
		51 - 500 SY	/ PER SY
		OVER 500 SY	/ PER SY
	ZONE 4B	0 - 50 SY	/ PER SY
		51 - 500 SY	/ PER SY
		OVER 500 SY	/ PER SY
	ZONE 5	0 - 50 SY	/ PER SY
		51 - 500 SY	/ PER SY
		OVER 500 SY	/ PER SY
	DELIVERY DAYS AFTER RECEIPT OF ORDER:		/ DAYS
III.11	SODDING - BERMUDA (Water is a separate bid item) (see specification)		
	ZONE 1	0 - 50 SY	/ PER SY
		51 - 500 SY	/ PER SY
		OVER 500 SY	/ PER SY
		0 - 50 SY	/ PER SY

BIDDER: _____

SECTION III

AUTHORIZED BY: _____

8 of 18

BID FORM
IFB # 16-0212-DS
ROAD BUILDING MATERIALS AND SERVICES

SECTION III - PAVEMENT BASE CONSTRUCTION

(MATERIAL and SERVICE)

	ZONE 2	51 - 500 SY	/ PER SY
		OVER 500 SY	/ PER SY
	ZONE 3	0 - 50 SY	/ PER SY
		51 - 500 SY	/ PER SY
		OVER 500 SY	/ PER SY
	ZONE 4A	0 - 50 SY	/ PER SY
		51 - 500 SY	/ PER SY
		OVER 500 SY	/ PER SY
	ZONE 4B	0 - 50 SY	/ PER SY
		51 - 500 SY	/ PER SY
		OVER 500 SY	/ PER SY
	ZONE 5	0 - 50 SY	/ PER SY
		51 - 500 SY	/ PER SY
		OVER 500 SY	/ PER SY
	DELIVERY DAYS AFTER RECEIPT OF ORDER:		/ DAYS
III.12	WATER FOR SEEDING, SODDING & TREES (see specification)		
	ZONE 1	0 - 50 GAL	/ PER GAL
		51 - 250 GAL	/ PER GAL
		251 - 500 GAL	/ PER GAL
		500 - 1000 GAL	/ PER GAL
	ZONE 2	0 - 50 GAL	/ PER GAL
		51 - 250 GAL	/ PER GAL
		251 - 500 GAL	/ PER GAL
		500 - 1000 GAL	/ PER GAL

BIDDER: _____

SECTION III

AUTHORIZED BY: _____

9 of 18

10/28/2015

BID FORM
IFB # 16-0212-DS
ROAD BUILDING MATERIALS AND SERVICES

SECTION III - PAVEMENT BASE CONSTRUCTION			(MATERIAL and SERVICE)
	ZONE 3	0 - 50 GAL	/ PER GAL
		51 - 250 GAL	/ PER GAL
		251 - 500 GAL	/ PER GAL
		500 - 1000 GAL	/ PER GAL
	ZONE 4A	0 - 50 GAL	/ PER GAL
		51 - 250 GAL	/ PER GAL
		251 - 500 GAL	/ PER GAL
		500 - 1000 GAL	/ PER GAL
	ZONE 4B	0 - 50 GAL	/ PER GAL
		51 - 250 GAL	/ PER GAL
		251 - 500 GAL	/ PER GAL
		500 - 1000 GAL	/ PER GAL
	ZONE 5	0 - 50 GAL	/ PER GAL
		51 - 250 GAL	/ PER GAL
		251 - 500 GAL	/ PER GAL
		500 - 1000 GAL	/ PER GAL
III.13	PAVEMENT REMOVAL - Excavate & remove existing pavement surface, base and subgrade as applicable (see specification)		
	4" DEPTH	0 - 100 SY	/ PER SY
		101 - 250 SY	/ PER SY
		251 - 500 SY	/ PER SY
		OVER 500 SY	/ PER SY

BIDDER: _____

SECTION III

AUTHORIZED BY: _____

10 of 18

BID FORM
IFB # 16-0212-DS
ROAD BUILDING MATERIALS AND SERVICES

SECTION III - PAVEMENT BASE CONSTRUCTION		(MATERIAL and SERVICE)
6" DEPTH	0 - 100 SY	/ PER SY
	101 - 250 SY	/ PER SY
	251 - 500 SY	/ PER SY
	OVER 500 SY	/ PER SY
8" DEPTH	0 - 100 SY	/ PER SY
	101 - 250 SY	/ PER SY
	251 - 500 SY	/ PER SY
	OVER 500 SY	/ PER SY
DELIVERY DAYS AFTER RECEIPT OF ORDER:		/ DAYS
III.14	CEMENT TREATED AGGREGATE BASE - (Manatee County Spec 403.1)	
LOCATION OF VENDOR'S PLANT:		
PRICE F.O.B. VENDOR'S PLANT:		/ PER TON
PRICE VENDOR DELIVERED TO:		
ZONE 1		/ PER TON
ZONE 2		/ PER TON
ZONE 3		/ PER TON
ZONE 4A		/ PER TON
ZONE 4B		/ PER TON
ZONE 5		/ PER TON
DELIVERY DAYS AFTER RECEIPT OF ORDER:		/ DAYS

BIDDER: _____

SECTION III

AUTHORIZED BY: _____

11 of 18

BID FORM
IFB # 16-0212-DS
ROAD BUILDING MATERIALS AND SERVICES

SECTION III - PAVEMENT BASE CONSTRUCTION		(MATERIAL and SERVICE)
III.15	BASE RECONSTRUCTION - The existing surface & base shall be scarified and/or milled so as the maximum size material will pass a 2" screen. The material will then be mixed to produce a new monolithic base material; then spread across the full width of the road to a uniform depth 1' wider than the proposed Asphaltic Concrete Surface. The new base shall be compacted to 98% modified ASHTO T180. Density shall be determined using test strips & Density Control Nuclear Method.	
	MOBILIZATION (LUMP SUM)	/ EACH
	1,000 - 5,000 SY	/ PER SY
	OVER 5,000 SY	/ PER SY
	ADDITIVES	/ TON
	DELIVERY DAYS AFTER RECEIPT OF ORDER:	/ DAYS
III.16	EQUIPMENT RENTAL - MOTOR GRADER (CAT 12 OR EQUIVALENT) WITH OPERATOR	
	WITH OPERATOR	/PER HOUR
	WITH OPERATOR	/PER WEEK
	DELIVERY DAYS AFTER RECEIPT OF ORDER:	/ DAYS
III.17	EQUIPMENT RENTAL - FRONT END LOADER	
	CAT 950 OR EQUIVALENT WITH 3/4 CY BUCKET WITH OPERATOR	/PER HOUR
	CAT 950 OR EQUIVALENT WITH 3/4 CY BUCKET WITH OPERATOR	/PER WEEK
	CAT 950 OR EQUIVALENT WITH 1 CY BUCKET WITH OPERATOR	/PER HOUR
	CAT 950 OR EQUIVALENT WITH 1 CY BUCKET WITH OPERATOR	/PER WEEK
	CAT 950 OR EQUIVALENT WITH 3 CY BUCKET WITH OPERATOR	/PER HOUR
	CAT 950 OR EQUIVALENT WITH 3 CY BUCKET WITH OPERATOR	/PER WEEK
	DELIVERY DAYS AFTER RECEIPT OF ORDER:	/ DAYS

BIDDER: _____

SECTION III

AUTHORIZED BY: _____

12 of 18

10/28/2015

BID FORM
IFB # 16-0212-DS
ROAD BUILDING MATERIALS AND SERVICES

SECTION III - PAVEMENT BASE CONSTRUCTION		(MATERIAL and SERVICE)
III.18	EQUIPMENT RENTAL - DUMP TRUCK	
	FORD LNT 8000 OR EQUIVALENT WITH 5 CY CAPACITY (with Operator)	/PER HOUR
	FORD LNT 8000 OR EQUIVALENT WITH 5 CY CAPACITY (with Operator)	/PER WEEK
	FORD LNT 8000 OR EQUIVALENT WITH 15 CY CAPACITY (with Operator)	/PER HOUR
	FORD LNT 8000 OR EQUIVALENT WITH 15 CY CAPACITY (with Operator)	/PER WEEK
	23 YARD DUMP TRAILER WITH ROAD TRACTOR (with Operator)	/PER HOUR
	23 YARD DUMP TRAILER WITH ROAD TRACTOR (with Operator)	/PER WEEK
	DELIVERY DAYS AFTER RECEIPT OF ORDER:	/ DAYS
III.19	EQUIPMENT RENTAL - BULLDOZER	
	CAT D3 OR EQUIVALENT WITH OPERATOR	/PER HOUR
	CAT D3 OR EQUIVALENT WITH OPERATOR	/PER WEEK
	CAT D6 OR EQUIVALENT WITH OPERATOR	/PER HOUR
	CAT D6 OR EQUIVALENT WITH OPERATOR	/PER WEEK
	CAT D7 OR EQUIVALENT WITH OPERATOR	/PER HOUR
	CAT D7 OR EQUIVALENT WITH OPERATOR	/PER WEEK
	CAT D8 OR EQUIVALENT WITH OPERATOR	/PER HOUR
	CAT D8 OR EQUIVALENT WITH OPERATOR	/PER WEEK
	DELIVERY DAYS AFTER RECEIPT OF ORDER:	/ DAYS
III.20	EQUIPMENT RENTAL - ROTOR MIXER (BOMAG MPH 100 RECYCLER OR EQUIVALENT)	
	WITH OPERATOR	/PER HOUR

BIDDER: _____

SECTION III

AUTHORIZED BY: _____

BID FORM IFB # 16-0212-DS ROAD BUILDING MATERIALS AND SERVICES		
SECTION III - PAVEMENT BASE CONSTRUCTION		(MATERIAL and SERVICE)
	WITH OPERATOR	/PER WEEK
	DELIVERY DAYS AFTER RECEIPT OF ORDER:	/ DAYS
III.21	EQUIPMENT RENTAL - TRACK HOE EXCAVATOR CAT A324E or equivalent	
	WITH OPERATOR	/PER HOUR
	WITH OPERATOR	/PER WEEK
	DELIVERY DAYS AFTER RECEIPT OF ORDER:	/ DAYS
III.22	EQUIPMENT RENTAL - WALKING EXCAVATOR MENZI A-61 or equivalent	
	WITH OPERATOR	/PER HOUR
	WITH OPERATOR	/PER WEEK
	DELIVERY DAYS AFTER RECEIPT OF ORDER:	/ DAYS
III.23	EROSION CONTROL (FDOT 104)	
	BAILED HAY OR STRAW	/ PER EACH
	FLOATING TURBIDITY BARRIERS	/ PER LF
	SAND BAGGING	/ PER CY
	STAKED SILT FENCE	/ PER LF
	FILTER SOCK (INLET PROTECTION)	/ PER LF
	DELIVERY DAYS AFTER RECEIPT OF ORDER:	/ DAYS
III.24	TOP SOIL FOR (FDOT 162)	
	MUCK BLANKET	
	0 - 200 SY	/ PER SY

BIDDER: _____

SECTION III

AUTHORIZED BY: _____

14 of 18

BID FORM IFB # 16-0212-DS ROAD BUILDING MATERIALS AND SERVICES		
SECTION III - PAVEMENT BASE CONSTRUCTION		(MATERIAL and SERVICE)
	201 - 2,000 SY	/ PER SY
	OVER 2,000 SY	/ PER SY
	TOP SOIL	
	0 - 200 SY	/ PER SY
	201 - 2,000 SY	/ PER SY
	OVER 2,000 SY	/ PER SY
	DELIVERY DAYS AFTER RECEIPT OF ORDER:	/ DAYS
III.25	REWORKING AND SHOULDER SODDING ON EXISTING FACILITIES (see specification)	
	REWORK SHOULDERS	/ PER SY
	DELIVERY DAYS AFTER RECEIPT OF ORDER:	/ DAYS
III.26	CLIPPING OF SHOULDER AND CLEANUP FOR RESURFACING specification) (see	
	0 - 200 LF	/ PER LF
	201 - 2,000 LF	/ PER LF
	OVER 2,000 LF	/ PER LF
	DELIVERY DAYS AFTER RECEIPT OF ORDER:	/ DAYS
III.27	CLIPPING SHOULDER AND REMOVAL OF MATERIAL TO ESTABLISH DRAINAGE FINISHED SURFACE TO BE SODDED OR HYDRO (see specification)	
	0 - 2,000 LF	/ PER LF
	2,001 - 5000 LF	/ PER LF
	OVER 5,001 LF	/ PER LF
	TRUCK MEASURE REMOVAL OF MATERIAL	/ PER CY
	DELIVERY DAYS AFTER RECEIPT OF ORDER:	/ DAYS

BIDDER: _____

SECTION III

AUTHORIZED BY: _____

15 of 18

10/28/2015

BID FORM IFB # 16-0212-DS ROAD BUILDING MATERIALS AND SERVICES		
SECTION III - PAVEMENT BASE CONSTRUCTION		(MATERIAL and SERVICE)
III.28	COLD MIX IN PLACE INJECTION OF EXISTING UNPAVED ROADS BASE STABILIZATION (see specification)	
	LOCATION OF VENDOR'S PLANT:	
	EMULSIFIED ASPHALT	/ GAL
	ADDITIONAL AGGREGATE	/ TON
	RAP LESS THAN 1.25"	/ TON
	ADDITIVES	/ TON
	0 - 5,000 SY	/ PER SY
	5,000 - 15,000 SY	/ PER SY
	15,000 - 30,000 SY	/ PER SY
	30,000 - 100,000 SY	/ PER SY
	DELIVERY DAYS AFTER RECEIPT OF ORDER:	/ DAYS
III.29	COLD RECYCLED BITUMINOUS BASE COURSE (see specification)	
	0 - 30,000 SY	
	Base Course	/ SQ YD
	Emulsified Asphalt	/ GALLON
	6" Temporary Traffic Stripe (Paint) if needed	/ LF
	Additional Aggregates	/ TON
	Additional (R.A.P)	/ TON

BIDDER: _____

SECTION III

AUTHORIZED BY: _____

BID FORM
IFB # 16-0212-DS
ROAD BUILDING MATERIALS AND SERVICES

SECTION III - PAVEMENT BASE CONSTRUCTION		(MATERIAL and SERVICE)
	Additives	/ TON
	30,001 - 100,000 SY	
	Base Course	/ SQ YD
	Emulsified Asphalt	/ GALLON
	6" Temporary Traffic Stripe (Paint) if needed	/ LF
	Additional Aggregates	/TON
	Additional (R.A.P)	/TON
	Additives	/TON
	OVER 100,001 SY	
	Base Course	/ SQ YD
	Emulsified Asphalt	/ GALLON
	6" Temporary Traffic Stripe (Paint) if needed	/ LF
	Additional Aggregates	/TON
	Additional (R.A.P)	/TON
	Additives	/TON
III.30	SURVEYING - To be used with other Road Building Bid Items when required (see specification)	
	HOURLY RATE	
	0 - 10 HOURS	/ PER HOUR
	11 - 21 HOURS	/ PER HOUR
	21 - 40 HOURS	/ PER HOUR

BIDDER: _____

SECTION III

AUTHORIZED BY: _____

17 of 18

BID FORM IFB # 16-0212-DS ROAD BUILDING MATERIALS AND SERVICES		
SECTION III - PAVEMENT BASE CONSTRUCTION		(MATERIAL and SERVICE)
	40 + HOURS	/ PER HOUR
	DELIVERY DAYS AFTER RECEIPT OF ORDER:	/ DAYS
III.31	TREE REMOVAL & DISPOSAL (To include removal and disposal of root system) (see specification)	
	ALL ZONES: 2" - 4"	/ EACH
	5" - 8"	/ EACH
	9" - 12"	/ EACH
	13" - 24"	/ EACH
	25" - 36"	/ EACH
	OVER 36"	/ EACH
	DELIVERY DAYS AFTER RECEIPT OF ORDER:	/ DAYS
III.32	6' CONCRETE CURB STOPS (see specification)	/ EACH

BIDDER: _____

SECTION III

AUTHORIZED BY: _____

18 of 18

BID FORM
IFB # 16-0212-DS
ROAD BUILDING MATERIALS AND SERVICES

SECTION IV - BASE AND SURFACE CONSTRUCTION/MATERIAL		(Material and Service)
IV.1 SAND ASPHALT HOT MIX - 800# STABILITY (see specification)		
LOCATION OF VENDOR'S PLANT:		
PRICE F.O.B. VENDOR'S PLANT:		/ PER TON
PRICE VENDOR DELIVER TO JOB SITE:		
ZONE 1	0 - 500 TONS	/ PER TON
	OVER 500 TONS	/ PER TON
ZONE 2	0 - 500 TONS	/ PER TON
	OVER 500 TONS	/ PER TON
ZONE 3	0 - 500 TONS	/ PER TON
	OVER 500 TONS	/ PER TON
ZONE 4A	0 - 500 TONS	/ PER TON
	OVER 500 TONS	/ PER TON
ZONE 4B	0 - 500 TONS	/ PER TON
	OVER 500 TONS	/ PER TON
ZONE 5	0 - 500 TONS	/ PER TON
	OVER 500 TONS	/ PER TON
DELIVERY DAYS AFTER RECEIPT OF ORDER:		/ DAYS
IV.2 SAND ASPHALT HOT MIX - 1200# STABILITY (see specification)		
LOCATION OF VENDOR'S PLANT:		
PRICE F.O.B. VENDOR'S PLANT:		/ PER TON
PRICE VENDOR DELIVER TO JOB SITE:		
ZONE 1	0 - 500 TONS	/ PER TON
	OVER 500 TONS	/ PER TON
ZONE 2	0 - 500 TONS	/ PER TON
	OVER 500 TONS	/ PER TON
ZONE 3	0 - 500 TONS	/ PER TON
	OVER 500 TONS	/ PER TON

Bidder: _____

Authorized by: _____

BID FORM
IFB # 16-0212-DS
ROAD BUILDING MATERIALS AND SERVICES

SECTION IV - BASE AND SURFACE CONSTRUCTION/MATERIAL		(Material and Service)
ZONE 4A	0 - 500 TONS	/ PER TON
	OVER 500 TONS	/ PER TON
ZONE 4B	0 - 500 TONS	/ PER TON
	OVER 500 TONS	/ PER TON
ZONE 5	0 - 500 TONS	/ PER TON
	OVER 500 TONS	/ PER TON
DELIVERY DAYS AFTER RECEIPT OF ORDER:		/ DAYS
IV.3 ASPHALTIC BASE COURSE III (see specification)		
LOCATION OF VENDOR'S PLANT:		
PRICE F.O.B. VENDOR'S PLANT:		/ PER TON
PRICE VENDOR DELIVER TO JOB SITE:		
ZONE 1	0 - 500 TONS	/ PER TON
	OVER 500 TONS	/ PER TON
ZONE 2	0 - 500 TONS	/ PER TON
	OVER 500 TONS	/ PER TON
ZONE 3	0 - 500 TONS	/ PER TON
	OVER 500 TONS	/ PER TON
ZONE 4A	0 - 500 TONS	/ PER TON
	OVER 500 TONS	/ PER TON
ZONE 4B	0 - 500 TONS	/ PER TON
	OVER 500 TONS	/ PER TON
ZONE 5	0 - 500 TONS	/ PER TON
	OVER 500 TONS	/ PER TON
DELIVERY DAYS AFTER RECEIPT OF ORDER:		/ DAYS
IV.4 FRICTION COURSE TYPE (FC 12.5 FDOT 337)		
LOCATION OF VENDOR'S PLANT:		
PRICE F.O.B. VENDOR'S PLANT:		/ PER TON
PRICE VENDOR DELIVER TO JOB SITE:		

Bidder: _____

Authorized by: _____

BID FORM
IFB # 16-0212-DS
ROAD BUILDING MATERIALS AND SERVICES

SECTION IV - BASE AND SURFACE CONSTRUCTION/MATERIAL		(Material and Service)
ZONE 1	0 - 500 TONS	/ PER TON
	OVER 500 TONS	/ PER TON
ZONE 2	0 - 500 TONS	/ PER TON
	OVER 500 TONS	/ PER TON
ZONE 3	0 - 500 TONS	/ PER TON
	OVER 500 TONS	/ PER TON
ZONE 4A	0 - 500 TONS	/ PER TON
	OVER 500 TONS	/ PER TON
ZONE 4B	0 - 500 TONS	/ PER TON
	OVER 500 TONS	/ PER TON
ZONE 5	0 - 500 TONS	/ PER TON
	OVER 500 TONS	/ PER TON
DELIVERY DAYS AFTER RECEIPT OF ORDER:		/ DAYS
IV.5 FRICTION COURSE TYPE (FC 9.5 FDOT 337)		
LOCATION OF VENDOR'S PLANT:		
PRICE F.O.B. VENDOR'S PLANT:		/ PER TON
PRICE VENDOR DELIVER TO JOB SITE:		
ZONE 1	0 - 500 TONS	/ PER TON
	OVER 500 TONS	/ PER TON
ZONE 2	0 - 500 TONS	/ PER TON
	OVER 500 TONS	/ PER TON
ZONE 3	0 - 500 TONS	/ PER TON
	OVER 500 TONS	/ PER TON
ZONE 4A	0 - 500 TONS	/ PER TON
	OVER 500 TONS	/ PER TON
ZONE 4B	0 - 500 TONS	/ PER TON
	OVER 500 TONS	/ PER TON

Bidder: _____

Authorized by: _____

BID FORM
IFB # 16-0212-DS
ROAD BUILDING MATERIALS AND SERVICES

SECTION IV - BASE AND SURFACE CONSTRUCTION/MATERIAL		(Material and Service)
ZONE 5	0 - 500 TONS	/ PER TON
	OVER 500 TONS	/ PER TON
DELIVERY DAYS AFTER RECEIPT OF ORDER:		/ DAYS
IV.6 FRICTION COURSE TYPE FC-5 - (FC 5 FDOT 337)		
LOCATION OF VENDOR'S PLANT:		
PRICE F.O.B. VENDOR'S PLANT:		/ PER TON
PRICE VENDOR DELIVER TO JOB SITE:		
ZONE 1	0 - 500 TONS	/ PER TON
	OVER 500 TONS	/ PER TON
ZONE 2	0 - 500 TONS	/ PER TON
	OVER 500 TONS	/ PER TON
ZONE 3	0 - 500 TONS	/ PER TON
	OVER 500 TONS	/ PER TON
ZONE 4A	0 - 500 TONS	/ PER TON
	OVER 500 TONS	/ PER TON
ZONE 4B	0 - 500 TONS	/ PER TON
	OVER 500 TONS	/ PER TON
ZONE 5	0 - 500 TONS	/ PER TON
	OVER 500 TONS	/ PER TON
DELIVERY DAYS AFTER RECEIPT OF ORDER:		/ DAYS
IV.7 EAM COLD MIX (see specification)		
LOCATION OF VENDOR'S PLANT:		
PRICE F.O.B. VENDOR'S PLANT:		/ PER TON
DELIVERY DAYS AFTER RECEIPT OF ORDER:		/ DAYS
IV.8 ASPHALTIC CONCRETE TYPE S-1 (see specification)		
LOCATION OF VENDOR'S PLANT:		
PRICE F.O.B. VENDOR'S PLANT:		/ PER TON

Bidder: _____

Authorized by: _____

BID FORM
IFB # 16-0212-DS
ROAD BUILDING MATERIALS AND SERVICES

SECTION IV - BASE AND SURFACE CONSTRUCTION/MATERIAL		(Material and Service)
PRICE VENDOR DELIVER TO JOB SITE:		
ZONE 1	0 - 500 TONS	/ PER TON
	OVER 500 TONS	/ PER TON
ZONE 2	0 - 500 TONS	/ PER TON
	OVER 500 TONS	/ PER TON
ZONE 3	0 - 500 TONS	/ PER TON
	OVER 500 TONS	/ PER TON
ZONE 4A	0 - 500 TONS	/ PER TON
	OVER 500 TONS	/ PER TON
ZONE 4B	0 - 500 TONS	/ PER TON
	OVER 500 TONS	/ PER TON
ZONE 5	0 - 500 TONS	/ PER TON
	OVER 500 TONS	/ PER TON
DELIVERY DAYS AFTER RECEIPT OF ORDER:		/ DAYS
IV.9 ASPHALTIC CONCRETE TYPE S-III (see specification)		
LOCATION OF VENDOR'S PLANT:		
PRICE F.O.B. VENDOR'S PLANT:		/ PER TON
PRICE VENDOR DELIVER TO JOB SITE:		
ZONE 1	0 - 500 TONS	/ PER TON
	OVER 500 TONS	/ PER TON
ZONE 2	0 - 500 TONS	/ PER TON
	OVER 500 TONS	/ PER TON
ZONE 3	0 - 500 TONS	/ PER TON
	OVER 500 TONS	/ PER TON
ZONE 4A	0 - 500 TONS	/ PER TON
	OVER 500 TONS	/ PER TON
ZONE 4B	0 - 500 TONS	/ PER TON
	OVER 500 TONS	/ PER TON

Bidder: _____

Authorized by: _____

BID FORM
IFB # 16-0212-DS
ROAD BUILDING MATERIALS AND SERVICES

SECTION IV - BASE AND SURFACE CONSTRUCTION/MATERIAL		(Material and Service)
ZONE 5	0 - 500 TONS	/ PER TON
	OVER 500 TONS	/ PER TON
DELIVERY DAYS AFTER RECEIPT OF ORDER:		/ DAYS
IV.10 ASPHALTIC CONCRETE TYPE II (see specification)		
LOCATION OF VENDOR'S PLANT:		
PRICE F.O.B. VENDOR'S PLANT:		/ PER TON
PRICE VENDOR DELIVER TO JOB SITE:		
ZONE 1	0 - 500 TONS	/ PER TON
	OVER 500 TONS	/ PER TON
ZONE 2	0 - 500 TONS	/ PER TON
	OVER 500 TONS	/ PER TON
ZONE 3	0 - 500 TONS	/ PER TON
	OVER 500 TONS	/ PER TON
ZONE 4A	0 - 500 TONS	/ PER TON
	OVER 500 TONS	/ PER TON
ZONE 4B	0 - 500 TONS	/ PER TON
	OVER 500 TONS	/ PER TON
ZONE 5	0 - 500 TONS	/ PER TON
	OVER 500 TONS	/ PER TON
DELIVERY DAYS AFTER RECEIPT OF ORDER:		/ DAYS
IV.11 ASPHALTIC CONCRETE, TYPE III - (see specification)		
LOCATION OF VENDOR'S PLANT:		
PRICE F.O.B. VENDOR'S PLANT:		/ PER TON
PRICE VENDOR DELIVER TO JOB SITE:		
ZONE 1	0 - 500 TONS	/ PER TON
	OVER 500 TONS	/ PER TON

Bidder: _____

Authorized by: _____

BID FORM
IFB # 16-0212-DS
ROAD BUILDING MATERIALS AND SERVICES

SECTION IV - BASE AND SURFACE CONSTRUCTION/MATERIAL		(Material and Service)
ZONE 2	0 - 500 TONS	/ PER TON
	OVER 500 TONS	/ PER TON
ZONE 3	0 - 500 TONS	/ PER TON
	OVER 500 TONS	/ PER TON
ZONE 4A	0 - 500 TONS	/ PER TON
	OVER 500 TONS	/ PER TON
ZONE 4B	0 - 500 TONS	/ PER TON
	OVER 500 TONS	/ PER TON
ZONE 5	0 - 500 TONS	/ PER TON
	OVER 500 TONS	/ PER TON
DELIVERY DAYS AFTER RECEIPT OF ORDER:		/ DAYS
IV.12 ASPHALT RUBBER MEMBRANE INTERLAYER (ARMI) - (FDOT 341)		
LOCATION OF VENDOR'S PLANT:		
PRICE F.O.B. VENDOR'S PLANT:		/ PER TON
PRICE VENDOR DELIVER TO JOB SITE:		
ZONE 1	6000 SY - 10,000 SY	/ PER SY
	10,000 - 15,000 SY	/ PER SY
	15,000 + SY	/ PER SY
ZONE 2	6000 SY - 10,000 SY	/ PER SY
	10,000 - 15,000 SY	/ PER SY
	15,000 + SY	/ PER SY
ZONE 3	6000 SY - 10,000 SY	/ PER SY
	10,000 - 15,000 SY	/ PER SY
	15,000 + SY	/ PER SY
ZONE 4A	6000 SY - 10,000 SY	/ PER SY
	10,000 - 15,000 SY	/ PER SY
	15,000 + SY	/ PER SY

Bidder: _____

Authorized by: _____

BID FORM
IFB # 16-0212-DS
ROAD BUILDING MATERIALS AND SERVICES

SECTION IV - BASE AND SURFACE CONSTRUCTION/MATERIAL		(Material and Service)
ZONE 4B	6000 SY - 10,000 SY	/ PER SY
	10,000 - 15,000 SY	/ PER SY
	15,000 + SY	/ PER SY
ZONE 5	6000 SY - 10,000 SY	/ PER SY
	10,000 - 15,000 SY	/ PER SY
	15,000 + SY	/ PER SY
DELIVERY DAYS AFTER RECEIPT OF ORDER:		/ DAYS
IV.13	SWEEP, TACK, SPREAD AND COMPACT 100# / SY OR MORE (see specification)	
	20 - 60 TONS	/ PER TON
	61 - 100 TONS	/ PER TON
	101 - 500 TONS	/ PER TON
	OVER 500 TONS	/ PER TON
DELIVERY DAYS AFTER RECEIPT OF ORDER:		/ DAYS
IV.14	SWEEP, TACK, SPREAD AND COMPACT 50#/SY TO 99#/SY (see specification)	
	0 - 50 TONS	/ PER TON
	50 - 200 TONS	/ PER TON
	201 - 500 TONS	/ PER TON
	OVER 500 TONS	/ PER TON
DELIVERY DAYS AFTER RECEIPT OF ORDER:		/ DAYS
IV.15	SWEEP, TACK, SPREAD AND COMPACT ROAD WIDENING (see specification)	
	0 - 50 TONS	/ PER TON
	50 - 200 TONS	/ PER TON
	201 - 500 TONS	/ PER TON
	OVER 500 TONS	/ PER TON
DELIVERY DAYS AFTER RECEIPT OF ORDER:		/ DAYS

Bidder: _____

Authorized by: _____

BID FORM
IFB # 16-0212-DS
ROAD BUILDING MATERIALS AND SERVICES

SECTION IV - BASE AND SURFACE CONSTRUCTION/MATERIAL		(Material and Service)
IV.16 SWEEP, TACK, SPREAD AND COMPACT PARKING LOTS (see specification)		
0 - 50 TONS		/ PER TON
50 - 200 TONS		/ PER TON
201 - 500 TONS		/ PER TON
OVER 500 TONS		/ PER TON
DELIVERY DAYS AFTER RECEIPT OF ORDER:		/ DAYS
IV.17 CUT, SQUARE, SWEEP, TACK, SPREAD AND COMPACT PATCHING (see specification)		
1 - 5 TONS		/ PER TON
6 - 10 TONS		/ PER TON
11 - 15 TONS		/ PER TON
16 - 20 TON		/ PER TON
21 - 25 TONS		/ PER TON
26 - 30 TONS		/ PER TON
OVER 30 TONS		/ PER TON
DELIVERY DAYS AFTER RECEIPT OF ORDER:		/ DAYS
IV.18 BITUMINOUS DOUBLE SURFACE TREATMENT (see specification)		
LOCATION OF VENDOR'S PLANT:		
PRICE VENDOR DELIVER TO JOB SITE:		
ZONE 1	0 - 7,000 SY	/ PER SY
	7,001 - 21,000 SY	/ PER SY
	21,001 - 42,000 SY	/ PER SY
	OVER 42,000 SY	/ PER SY

Bidder: _____

Authorized by: _____

BID FORM
IFB # 16-0212-DS
ROAD BUILDING MATERIALS AND SERVICES

SECTION IV - BASE AND SURFACE CONSTRUCTION/MATERIAL		(Material and Service)
ZONE 2	0 - 7,000 SY	/ PER SY
	7,001 - 21,000 SY	/ PER SY
	21,001 - 42,000 SY	/ PER SY
	OVER 42,000 SY	/ PER SY
ZONE 3	0 - 7,000 SY	/ PER SY
	7,001 - 21,000 SY	/ PER SY
	21,001 - 42,000 SY	/ PER SY
	OVER 42,000 SY	/ PER SY
ZONE 4A	0 - 7,000 SY	/ PER SY
	7,001 - 21,000 SY	/ PER SY
	21,001 - 42,000 SY	/ PER SY
	OVER 42,000 SY	/ PER SY
ZONE 4B	0 - 7,000 SY	/ PER SY
	7,001 - 21,000 SY	/ PER SY
	21,001 - 42,000 SY	/ PER SY
	OVER 42,000 SY	/ PER SY
ZONE 5	0 - 7,000 SY	/ PER SY
	7,001 - 21,000 SY	/ PER SY
	21,001 - 42,000 SY	/ PER SY
	OVER 42,000 SY	/ PER SY
DELIVERY DAYS AFTER RECEIPT OF ORDER:		/ DAYS

Bidder: _____

Authorized by: _____

BID FORM
IFB # 16-0212-DS
ROAD BUILDING MATERIALS AND SERVICES

SECTION IV - BASE AND SURFACE CONSTRUCTION/MATERIAL	(Material and Service)
THIN LIFT ASPHALT MIX - Application of SP 4.75 for Surfacing and rut filling only. IV.19 All prices to include Materials, Labor, Equipment, Traffic Control and Mobilization - (see specification)	
LOCATION OF VENDOR'S PLANT:	
PRICE VENDOR DELIVER TO JOB SITE:	
0 - 40,000 SY	/ PER SY
40,001 - 100,000 SY	/ PER SY
OVER 100,000 SY	/ PER SY
SCARIFY AND SWEEP THERMO PLASTIC AS REQUIRED	/ PER LF
DELIVERY DAYS AFTER RECEIPT OF ORDER:	/ DAYS
IV.20 MICRO-SURFACING - Application for Surfacing only (Type A). All prices to include Materials, Labor, Equipment, Traffic Control and Mobilization - (see specification)	
LOCATION OF VENDOR'S PLANT:	
PRICE VENDOR DELIVER TO JOB SITE:	
0 - 40,000 SY	/ PER SY
40,001 - 100,000 SY	/ PER SY
OVER 100,000 SY	/ PER SY
SCARIFY AND SWEEP THERMO PLASTIC AS REQUIRED	/ PER LF
DELIVERY DAYS AFTER RECEIPT OF ORDER:	/ DAYS
IV.20a MICRO-SURFACING - Application for Surfacing only (Type A). (No Crack Filling) All prices to include Materials, Labor, Equipment, Traffic Control and Mobilization - (see specification)	
LOCATION OF VENDOR'S PLANT:	
PRICE VENDOR DELIVER TO JOB SITE:	

Bidder: _____

Authorized by: _____

BID FORM
IFB # 16-0212-DS
ROAD BUILDING MATERIALS AND SERVICES

SECTION IV - BASE AND SURFACE CONSTRUCTION/MATERIAL		(Material and Service)
0 - 40,000 SY		/ PER SY
40,001 - 100,000 SY		/ PER SY
OVER 100,000 SY		/ PER SY
SCARIFY AND SWEEP THERMO PLASTIC AS REQUIRED		/ PER LF
DELIVERY DAYS AFTER RECEIPT OF ORDER:		/ DAYS
DELIVERY DAYS AFTER RECEIPT OF ORDER:		/ DAYS
IV.21 MICRO-SURFACING - Application for Leveling and Surfacing. All prices to include Materials, Labor, Equipment, Traffic Control and Mobilization - (see specification)		
LOCATION OF VENDOR'S PLANT:		
PRICE VENDOR DELIVER TO JOB SITE:		
0 - 40,000 SY		
40,001 - 100,000 SY		/ PER SY
OVER 100,000 SY		/ PER SY
SCARIFY AND SWEEP THERMO PLASTIC AS REQUIRED		/ PER LF
DELIVERY DAYS AFTER RECEIPT OF ORDER:		/ DAYS
IV.21a MICRO-SURFACING - Application for Leveling and Surfacing. (No Crack Filling) All prices to include Materials, Labor, Equipment, Traffic Control and Mobilization - (see specification)		
LOCATION OF VENDOR'S PLANT:		
PRICE VENDOR DELIVER TO JOB SITE:		

Bidder: _____

Authorized by: _____

BID FORM
IFB # 16-0212-DS
ROAD BUILDING MATERIALS AND SERVICES

SECTION IV - BASE AND SURFACE CONSTRUCTION/MATERIAL		(Material and Service)
0 - 40,000 SY		
40,001 - 100,000 SY		/ PER SY
OVER 100,000 SY		/ PER SY
SCARIFY AND SWEEP THERMO PLASTIC AS REQUIRED		/ PER LF
DELIVERY DAYS AFTER RECEIPT OF ORDER:		/ DAYS
IV.22 CONSTRUCTION SEALING OF ASPHALTIC CONCRETE SURFACE COURSES WITH AN ASPHALT REJUVENATING AGENT (see specification)		
LOCATION OF VENDOR'S PLANT:		
PRICE VENDOR DELIVER TO JOB SITE:		
50,000 - 300,000 SY		/ PER SY
OVER 300,000 SY		/ PER SY
DELIVERY DAYS AFTER RECEIPT OF ORDER:		/ DAYS
IV.23 RESTORATIVE SEALING OF ASPHALT PAVEMENT WITH ASPHALT REJUVENATIVE AGENT RESTRICTIVE SEAL (see specification)		
LOCATION OF VENDOR'S PLANT:		
PRICE VENDOR DELIVER TO JOB SITE:		
50,000 - 300,000 SY		/ PER SY
OVER 300,000 SY		/ PER SY
DELIVERY DAYS AFTER RECEIPT OF ORDER:		/ DAYS
IV.24 ASPHALT REJUVENATING AGENT - For Construction Seal (see specification)		
PRICE VENDOR DELIVER TO MANATEE COUNTY YARD		/ PER GAL
DELIVERY DAYS AFTER RECEIPT OF ORDER:		/ DAYS

Bidder: _____

Authorized by: _____

BID FORM
IFB # 16-0212-DS
ROAD BUILDING MATERIALS AND SERVICES

SECTION IV - BASE AND SURFACE CONSTRUCTION/MATERIAL	(Material and Service)
IV.25 ASPHALT REJUVENATING EMULSION - For Construction Seal (see specification)	
PRICE VENDOR DELIVER TO MANATEE COUNTY YARD	/ PER GAL
DELIVERY DAYS AFTER RECEIPT OF ORDER:	/ DAYS
IV.26 BITUMINOUS CRACK RELIEF LAYER - ALL LABOR, MATERIAL & EQUIPMENT TO PREP AND APPLY AN APPLICATION OF BITUMINOUS MATERIAL COVERED WITH A SINGLE APPLICATION OF AGGREGATE (see specification)	
0 - 5000 SY	/ PER SY
5,001 - 10,000 SY	/ PER SY
10,001 + SY	/ PER SY
IV.27 PAVEMENT MILLING (see specification)	
AVERAGE CUT 1" TO 2"	
0 - 2,000 SY	/ PER SY
2,000 - 5,000 SY	/ PER SY
5,001 - 10,000 SY	/ PER SY
OVER 10,000 SY	/ PER SY
AVERAGE CUT OVER 2"	
0 - 2,000 SY	/ PER SY
2,000 - 5,000 SY	/ PER SY
5,001 - 10,000 SY	/ PER SY
OVER 10,000 SY	/ PER SY
DELIVERY DAYS AFTER RECEIPT OF ORDER:	/ DAYS

Bidder: _____

Authorized by: _____

BID FORM
IFB # 16-0212-DS
ROAD BUILDING MATERIALS AND SERVICES

SECTION IV - BASE AND SURFACE CONSTRUCTION/MATERIAL	(Material and Service)
IV.28 RECLAIMED ASPHALT - CREDIT (see specification)	
0 - 500 TONS	/ PER TON
501 - 1,000 TONS	/ PER TON
OVER 1,000 TONS	/ PER TON
DELIVERY DAYS AFTER RECEIPT OF ORDER:	/ DAYS
IV.29 RECLAIMED NON-ASPHALTIC BASE MATERIAL - CREDIT (see specification)	
0 - 500 TONS	/ PER TON
501 - 1,000 TONS	/ PER TON
OVER 1,000 TONS	/ PER TON
DELIVERY DAYS AFTER RECEIPT OF ORDER:	/ DAYS
IV.30 SCREEN AND CRUSH ASPHALT MILLINGS AT COUNTY YARD (see specification)	
4680 66th Street West, Bradenton FL 34210	
SCREENING OVERSIZED MATERIAL MINUS 4"	/ PER TON
CRUSHING CONCRETE 1 1/2" MINUS MATERIAL	/ PER TON
DELIVERY DAYS AFTER RECEIPT OF ORDER:	/ DAYS
5511 39th Street East, Bradenton FL 34203	
SCREENING OVERSIZED MATERIAL MINUS 4"	/ PER TON
CRUSHING ASPHALT 1/2" MINUS MATERIAL (5001 - PLUS TONS)	/ DAYS
DELIVERY DAYS AFTER RECEIPT OF ORDER:	/ PER TON
8500 69th Street East, Bradenton FL 34221	
SCREENING OVERSIZED MATERIAL MINUS 4"	/ PER TON
CRUSHING ASPHALT 1/2" MINUS MATERIAL (5001 - PLUS TONS)	/ PER TON
DELIVERY DAYS AFTER RECEIPT OF ORDER:	/ DAYS

Bidder: _____

Authorized by: _____

BID FORM
IFB # 16-0212-DS
ROAD BUILDING MATERIALS AND SERVICES

SECTION IV - BASE AND SURFACE CONSTRUCTION/MATERIAL		(Material and Service)
17915 Waterline Road, Bradenton FL 34212		
SCREENING OVERSIZED MATERIAL MINUS 4"		/ PER TON
CRUSHING ASPHALT 1/2" MINUS MATERIAL (5001 - PLUS TONS)		/ PER TON
DELIVERY DAYS AFTER RECEIPT OF ORDER:		/ DAYS
IV.31 PAINTED TRAFFIC LINES & MARKINGS (FDOT Sections 710, 971-12, Index #17346)		
6" SKIP TRAFFIC STRIPE		/GROSS MILE
6" SOLID TRAFFIC STRIPE		/NET MILE
6" SOLID TRAFFIC STRIPE		/LINEAR FOOT
8" SOLID TRAFFIC STRIPE		/NET MILE
8" SOLID TRAFFIC STRIPE		/LINEAR FOOT
STOP BARS - 24" WIDTH		/LINEAR FOOT
CROSSWALK - 12" WIDTH		/LINEAR FOOT
18" SOLID WHITE TRAFFIC STRIPE		/LINEAR FOOT
DELIVERY DAYS AFTER RECEIPT OF ORDER:		/ DAYS
IV.32 PAINTED TRAFFIC PAVEMENT MARKERS - (FDOT 710, 971-12, Index #17346)		
(A) (All White)	LEGEND:	
	LEFT - 19 SQUARE FEET	/ EACH
	RIGHT - 27 SQUARE FEET	/ EACH
	STOP - 22 SQUARE FEET	/ EACH
	ONLY - 22 SQUARE FEET	/ EACH
	MERGE - 36 SQUARE FEET	/ EACH

Bidder: _____

Authorized by: _____

BID FORM
IFB # 16-0212-DS
ROAD BUILDING MATERIALS AND SERVICES

SECTION IV - BASE AND SURFACE CONSTRUCTION/MATERIAL		(Material and Service)
	SCHOOL - 33 SQUARE FEET	/ EACH
	BUS - 21 SQUARE FEET	/ EACH
	TURN - 25 SQUARE FEET	/ EACH
	RXR - 28 SQUARE FEET	/ EACH
	BIKE - 12 SQUARE FEET	/ EACH
(B) (All White)	ARROWS:	
	STRAIGHT - 12 SQUARE FEET	/ EACH
	LEFT - 16 SQUARE FEET	/ EACH
	RIGHT - 16 SQUARE FEET	/ EACH
	COMBINATION - 27 SQUARE FEET	/ EACH
(C) (All White)	SYMBOLS:	
	BICYCLIST - 3.9 SQUARE FEET	/ EACH
	DIAMOND - 6.5 SQUARE FEET	/ EACH
	HANDICAPPED - 5.0 SQUARE FEET	/ EACH
DELIVERY DAYS AFTER RECEIPT OF ORDER:		/ DAYS
IV.33	THERMOPLASTIC TRAFFIC STRIPES AND MARKINGS - (FDOT Section 711, Index #17346)	
	6" SKIP TRAFFIC STRIPE - THERMOPLASTIC	/ PER GROSS MILE
	6" SKIP TRAFFIC STRIPE - THERMOPLASTIC	/PER LINEAR FOOT
	6" SOLID STRIPE - THERMOPLASTIC	/PER LINEAR FOOT
	8" SOLID STRIPE - THERMOPLASTIC	/PER LINEAR FOOT
	18" SOLID TRAFFIC STRIPE	/PER LINEAR FOOT

Bidder: _____

Authorized by: _____

BID FORM
IFB # 16-0212-DS
ROAD BUILDING MATERIALS AND SERVICES

SECTION IV - BASE AND SURFACE CONSTRUCTION/MATERIAL		(Material and Service)
12" CROSSWALK - THERMOPLASTIC		/PER LINEAR FOOT
24" SOLID STOP BAR - THERMOPLASTIC		/PER LINEAR FOOT
DELIVERY DAYS AFTER RECEIPT OF ORDER:		/ DAYS
IV.34 THERMOPLASTIC TRAFFIC PAVEMENT MARKINGS - (FDOT Section 711, 971-12, Index #17346)		
(A) (All White)	LEGEND:	
	LEFT - 19 SQUARE FEET	/ EACH
	RIGHT - 27 SQUARE FEET	/ EACH
	STOP - 22 SQUARE FEET	/ EACH
	ONLY - 22 SQUARE FEET	/ EACH
	MERGE - 36 SQUARE FEET	/ EACH
	SCHOOL - 33 SQUARE FEET	/ EACH
	BUS - 21 SQUARE FEET	/ EACH
	TURN - 25 SQUARE FEET	/ EACH
	RXR - 28 SQUARE FEET	/ EACH
	BIKE - 12 SQUARE FEET	/ EACH
(B) (All White)	ARROWS:	
	STRAIGHT - 12 SQUARE FEET	/ EACH
	LEFT - 16 SQUARE FEET	/ EACH
	RIGHT - 16 SQUARE FEET	/ EACH
	COMBINATION - 27 SQUARE FEET	/ EACH

Bidder: _____

Authorized by: _____

BID FORM
IFB # 16-0212-DS
ROAD BUILDING MATERIALS AND SERVICES

SECTION IV - BASE AND SURFACE CONSTRUCTION/MATERIAL		(Material and Service)
(C) (All White)	SYMBOLS:	
	BICYCLIST - 3.9 SQUARE FEET	/ EACH
	DIAMOND - 6.5 SQUARE FEET	/ EACH
	HANDICAPPED - 5.0 SQUARE FEET	/ EACH
DELIVERY DAYS AFTER RECEIPT OF ORDER:		/ DAYS
IV.35 REFLECTIVE PAVEMENT MARKERS TYPES 1 TO 5 (FDOT Section 706-1)		
CLASS "A" MARKERS - FDOT SEC. 706-2.3.2: FURNISHED & INSTALLED		/ EACH
CLASS "B" MARKERS - FDOT SEC. 706-2.3.2 / 706-2.3.3(A): FURNISHED & INSTALLED		/ EACH
DELIVERY DAYS AFTER RECEIPT OF ORDER:		/ DAYS
IV.36 REMOVAL OF EXISTING THERMOPLASTIC MARKING (FDOT 102)		
EQUIPMENT, MATERIAL AND LABOR NECESSARY TO REMOVE, PICK UP AND DISPOSE OF THERMOPLASTIC MARKING		
0 - 1000 LF		/ LF
1001 - 5000 LF		/ LF
5001 - 10,000 LF		/ LF
OVER 10,001 LF		/ LF
DELIVERY DAYS AFTER RECEIPT OF ORDER:		/ DAYS
IV.37 UTILITY/INTERSECTION REPAIR (see specification)		
EQUIPMENT, MATERIAL AND LABOR NECESSARY TO REPAIR INTERSECTIONS AND UTILITY CUTS FROM EDGE OF PAVEMENT TO EDGE OF PAVEMENT BY MILLING AND RESURFACING WITH 125# OF S-III OR EQUIVALENT		/ TON
DELIVERY DAYS AFTER RECEIPT OF ORDER:		/ DAYS

Bidder: _____

Authorized by: _____

BID FORM
IFB # 16-0212-DS
ROAD BUILDING MATERIALS AND SERVICES

SECTION IV - BASE AND SURFACE CONSTRUCTION/MATERIAL		(Material and Service)
IV.38 REWORK EXISTING ASPHALTIC CONCRETE PAVEMENT (see specification)		
ALL LABOR, EQUIPMENT AND MATERIAL TO INDIRECT HEAT EXISTING ASPHALT PAVEMENT, SCARIFYING AND REJUVENATING AGENTS, RESHAPE AND COMPACT EXISTING ASPHALTIC CONCRETE:		
0 - 1,000 SY		/ PER SY
1,001 - 5,000 SY		/ PER SY
OVER 5,000 SY		/ PER SY
PER TON PRICE FOR TYPE III ASPHALTIC CONCRETE ADDED:		/ PER TON
DELIVERY DAYS AFTER RECEIPT OF ORDER:		/ DAYS
IV.39 MANHOLE ADJUSTMENT(ADJUSTMENT RINGS) (see specification)		
1 - 5 UNITS		/ PER UNIT
6 - 10 UNITS		/ PER UNIT
OVER 10 UNITS		/ PER UNIT
DELIVERY DAYS AFTER RECEIPT OF ORDER:		/ DAYS
IV.40 MANHOLE and WATER VALVE ADJUSTMENT as a PART of BASE RECONSTRUCTION (see specification)		
1 - 5 UNITS		/ PER UNIT
6 - 10 UNITS		/ PER UNIT
OVER 10 UNITS		/ PER UNIT
MOBILIZATION		/ EA

Bidder: _____

Authorized by: _____

BID FORM
IFB # 16-0212-DS
ROAD BUILDING MATERIALS AND SERVICES

SECTION IV - BASE AND SURFACE CONSTRUCTION/MATERIAL		(Material and Service)
MAINTENANCE OF TRAFFIC FDOT STANDARDS 1 LANE		/ PER DAY
MAINTENANCE OF TRAFFIC FDOT STANDARDS 2 LANE		/ PER DAY
DELIVERY DAYS AFTER RECEIPT OF ORDER:		/ DAYS
IV.41 MANHOLE FRAME AND COVER, FURNISH AND INSTALL (see specification)		
1 - 5 UNITS		/ PER UNIT
6 - 10 UNITS		/ PER UNIT
OVER 10 UNITS		/ PER UNIT
MOBILIZATION		/ EA
MAINTENANCE OF TRAFFIC FDOT STANDARDS 1 LANE		/ PER DAY
MAINTENANCE OF TRAFFIC FDOT STANDARDS 2 LANE		/ PER DAY
DELIVERY DAYS AFTER RECEIPT OF ORDER:		/ DAYS
IV.41a FDOT MANHOLE ADJUSTMENT (see specification)		
1 - 5 UNITS		/ PER UNIT
6 - 10 UNITS		/ PER UNIT
OVER 10 UNITS		/ PER UNIT
MOBILIZATION		/ EA
MAINTENANCE OF TRAFFIC FDOT STANDARDS 1 LANE		/ PER DAY
MAINTENANCE OF TRAFFIC FDOT STANDARDS 2 LANE		/ PER DAY
DELIVERY DAYS AFTER RECEIPT OF ORDER:		/ DAYS
IV.42 FDOT VALVE BOX ADJUSTMENT (see specification)		

Bidder: _____

Authorized by: _____

BID FORM
IFB # 16-0212-DS
ROAD BUILDING MATERIALS AND SERVICES

SECTION IV - BASE AND SURFACE CONSTRUCTION/MATERIAL		(Material and Service)
1 - 5 UNITS		/ PER UNIT
6 - 10 UNITS		/ PER UNIT
OVER 10 UNITS		/ PER UNIT
MOBILIZATION		/ EA
MAINTENANCE OF TRAFFIC FDOT STANDARDS 1 LANE		/ PER DAY
MAINTENANCE OF TRAFFIC FDOT STANDARDS 2 LANE		/ PER DAY
DELIVERY DAYS AFTER RECEIPT OF ORDER:		/ DAYS
IV.43 WATER VALVE ADJUSTMENT (see specification)		
1 - 5 UNITS		/ PER UNIT
6 - 10 UNITS		/ PER UNIT
OVER 10 UNITS		/ PER UNIT
DELIVERY DAYS AFTER RECEIPT OF ORDER:		/ DAYS
IV.44 MOBILIZATION (Cost per Release Order) - Preparatory work and operations in mobilizing startup of project, including, but not limited to, operations necessary for the movement of personnel, equipment, supplies and incidentals to the project site, and for the establishment of temporary sanitary and other facilities. (see specification)		
ZONE 1		/ LUMP SUM
ZONE 2		/LUMP SUM
ZONE 3		/LUMP SUM
ZONE 4A		/LUMP SUM
ZONE 4B		/LUMP SUM

Bidder: _____

Authorized by: _____

BID FORM
IFB # 16-0212-DS
ROAD BUILDING MATERIALS AND SERVICES

SECTION IV - BASE AND SURFACE CONSTRUCTION/MATERIAL	(Material and Service)
ZONE 5	/LUMP SUM
DELIVERY DAYS AFTER RECEIPT OF ORDER:	/ DAYS
IV.45 INDUCTIVE LOOP DETECTORS - (FDOT Section 660)	
TYPE "A"	/ EACH
TYPE "F" 6' x 20'	/ EACH
TYPE "F" 6' x 40'	/ EACH
LEAD RUNS	/LF
DELIVERY DAYS AFTER RECEIPT OF ORDER:	/ DAYS
IV.46 MAINTENANCE OF TRAFFIC (see specification)	
Crew Complete (includes truck, foreman, two flaggers)	/ DAY
Flag Personnel (Includes two flaggers only)	/ DAY
Additional Flag Personnel (one flagger only)	/ HOUR
Temporary Signal Detection	/ DAY
Law Enforcement Personnel	/ HOUR
IV.47 FULL DEPTH PAVEMENT RECLAMATION (see specification)	
0 - 30,000 SY	
Preparation, Pulverizing, Shaping, Compaction and Filling	/ SQ YD
Additives, (Portland Cement)	/ TON
Imported Material	/ CY
Removal of Unsuitable Material	/ CY

Bidder: _____

Authorized by: _____

BID FORM
IFB # 16-0212-DS
ROAD BUILDING MATERIALS AND SERVICES

SECTION IV - BASE AND SURFACE CONSTRUCTION/MATERIAL	(Material and Service)
30,001 - 100,000 SY	
Preparation, Pulverizing, Shaping, Compaction and Filling	/ SQ YD
Additives, (Portland Cement)	/ TON
Imported Material	/ CY
Removal of Unsuitable Material	/ CY
OVER 100,001 SY	
Preparation, Pulverizing, Shaping, Compaction and Filling	/ SQ YD
Additives, (Portland Cement)	/ TON
Imported Material	/ CY
Removal of Unsuitable Material	/ CY
IV.48 HOT-IN-PLACE ASPHALT RECYCLING (see specification)	
30,000 SY	
Asphalt Stabilized Base Cover	/ SQ YD
Asphalt Rejuvenating Agent	/ GALLON
Furnish and Place S-III Asphalt	/ TON
30,001 - 100,000 SY	
Asphalt Recycling	/ SQ YD
Recycling Agent	/ GALLON

Bidder: _____

Authorized by: _____

BID FORM
IFB # 16-0212-DS
ROAD BUILDING MATERIALS AND SERVICES

SECTION IV - BASE AND SURFACE CONSTRUCTION/MATERIAL		(Material and Service)
Furnish and Install S-III Asphalt		/ TON
OVER 100,001 SY		
Asphalt Recycling		/ SQ YD
Recycling Agent		/ GALLON
Furnish and Install S-III Asphalt		/ TON
IV.49 SUPER PAVE MIX 9.5 (FDOT 334)		
LOCATION OF VENDOR'S PLANT:		
PRICE F.O.B. VENDOR'S PLANT:		/ PER TON
PRICE VENDOR DELIVER TO JOB SITE:		
ZONE 1	0 - 500 TONS	/ PER TON
	OVER 500 TONS	/ PER TON
ZONE 2	0 - 500 TONS	/ PER TON
	OVER 500 TONS	/ PER TON
ZONE 3	0 - 500 TONS	/ PER TON
	OVER 500 TONS	/ PER TON
ZONE 4A	0 - 500 TONS	/ PER TON
	OVER 500 TONS	/ PER TON
ZONE 4B	0 - 500 TONS	/ PER TON
	OVER 500 TONS	/ PER TON

Bidder: _____

Authorized by: _____

BID FORM
IFB # 16-0212-DS
ROAD BUILDING MATERIALS AND SERVICES

SECTION IV - BASE AND SURFACE CONSTRUCTION/MATERIAL		(Material and Service)
ZONE 5	0 - 500 TONS	/ PER TON
	OVER 500 TONS	/ PER TON
DELIVERY DAYS AFTER RECEIPT OF ORDER:		/ DAYS
IV.50 SUPER PAVE MIX 12.5 (FDOT 334)		
LOCATION OF VENDOR'S PLANT:		
PRICE F.O.B. VENDOR'S PLANT:		/ PER TON
PRICE VENDOR DELIVER TO JOB SITE:		
ZONE 1	0 - 500 TONS	/ PER TON
	OVER 500 TONS	/ PER TON
ZONE 2	0 - 500 TONS	/ PER TON
	OVER 500 TONS	/ PER TON
ZONE 3	0 - 500 TONS	/ PER TON
	OVER 500 TONS	/ PER TON
ZONE 4A	0 - 500 TONS	/ PER TON
	OVER 500 TONS	/ PER TON
ZONE 4B	0 - 500 TONS	/ PER TON
	OVER 500 TONS	/ PER TON

Bidder: _____

Authorized by: _____

BID FORM
IFB # 16-0212-DS
ROAD BUILDING MATERIALS AND SERVICES

SECTION IV - BASE AND SURFACE CONSTRUCTION/MATERIAL		(Material and Service)
ZONE 5	0 - 500 TONS	/ PER TON
	OVER 500 TONS	/ PER TON
DELIVERY DAYS AFTER RECEIPT OF ORDER:		/ DAYS
IV.51	SWEEP, TACK, SPREAD & COMPACT SUPER PAVE MIXES <#100 (see specification)	
	0 - 50 TONS	/ PER TON
	50 - 200 TONS	/ PER TON
	201 - 500 TONS	/ PER TON
	OVER 500 TONS	/ PER TON
DELIVERY DAYS AFTER RECEIPT OF ORDER:		/ DAYS
IV.52	SWEEP, TACK, SPREAD & COMPACT SUPER PAVE MIXES >#100 (see specification)	
	0 - 50 TONS	/ PER TON
	50 - 200 TONS	/ PER TON
	201 - 500 TONS	/ PER TON
	OVER 500 TONS	/ PER TON
DELIVERY DAYS AFTER RECEIPT OF ORDER:		/ DAYS
IV.53	SAND SEAL COATING - Application prices to include Materials, Labor, Equipment, Traffic Control, Re-Painting and Mobilization (see specification)	
LOCATION OF VENDOR'S PLANT:		
PRICE VENDOR DELIVER TO JOB SITE:		
	0 - 40,000 SY	/ PER SY

Bidder: _____

Authorized by: _____

BID FORM
IFB # 16-0212-DS
ROAD BUILDING MATERIALS AND SERVICES

SECTION IV - BASE AND SURFACE CONSTRUCTION/MATERIAL	(Material and Service)
40,001 - 100,000 SY	/ PER SY
OVER 100,000 SY	/ PER SY
SCARIFY AND SWEEP THERMO PLASTIC AS REQUIRED	/ PER LF
DELIVERY DAYS AFTER RECEIPT OF ORDER:	/ DAYS
IV.54 CRACK FILLING/SEALING (FDOT DEV 305)	
0-99 GALLONS	/ PER GAL
100-250 GALLONS	/ PER GAL
over 251 GALLONS	/ PER GAL
IV.55 FOG SEAL - Application prices to include Materials, Labor, Equipment, Traffic Control, and Mobilization (see specification)	
TIGHT SURFACES 09 . - .14 GAL/SY	/ GAL
OPEN SURFACES .18 - .22 GAL/SY	/ GAL
DELIVERY DAYS AFTER RECEIPT OF ORDER:	/ DAYS
IV.56 OVERTIME RATE per DAY (DEFINED IN FRONT END D.07)	/ DAY

Bidder: _____

Authorized by: _____

BID FORM
IFB # 16-0212-DS
ROAD BUILDING MATERIALS AND SERVICES

SECTION V - STORMWATER, WASTEWATER & WATER UTILITIES FDOT 425 and 430	(MATERIAL AND SERVICE)
V.1 REMOVE STORM DRAIN - 12" TO 18" DIAMETER	
0 - 100 LF	/ PER LF
101 - 250 LF	/ PER LF
251 - 500 LF	/ PER LF
OVER 500 LF	/ PER LF
DELIVERY DAYS AFTER RECEIPT OF ORDER:	/ DAYS
V.2 REMOVE STORM DRAIN - 24" TO 48" DIAMETER	
0 - 100 LF	/ PER LF
101 - 250 LF	/ PER LF
251 - 500 LF	/ PER LF
OVER 500 LF	/ PER LF
DELIVERY DAYS AFTER RECEIPT OF ORDER:	/ DAYS
V.3 REMOVE STORM DRAIN - OVER 48" DIAMETER	
0 - 100 LF	/ PER LF
101 - 250 LF	/ PER LF
251 - 500 LF	/ PER LF
OVER 500 LF	/ PER LF
DELIVERY DAYS AFTER RECEIPT OF ORDER:	/ DAYS
V.4 REMOVE MITERED END	/ EACH
V.5 REMOVE HEADWALL	/ EACH
V.6 FURNISH & INSTALL H.D.P.E. PIPE 10"	
WELLPOINTS (LUMP SUM)	/ PER DAY
	/ PER WEEK

BIDDER: _____

AUTHORIZED SIGNATURE: _____

BID FORM
IFB # 16-0212-DS
ROAD BUILDING MATERIALS AND SERVICES

SECTION V - STORMWATER, WASTEWATER & WATER UTILITIES FDOT 425 and 430		(MATERIAL AND SERVICE)
TO 4' DEPTH	0 - 100 LF	/ PER LF
	101 - 250 LF	/ PER LF
	251 - 500 LF	/ PER LF
	OVER 500 LF	/ PER LF
4' - 6' DEPTH	0 - 100 LF	/ PER LF
	101 - 250 LF	/ PER LF
	251 - 500 LF	/ PER LF
	OVER 500 LF	/ PER LF
6' - 8' DEPTH	0 - 100 LF	/ PER LF
	101 - 250 LF	/ PER LF
	251 - 500 LF	/ PER LF
	OVER 500 LF	/ PER LF
8' - 10' DEPTH	0 - 100 LF	/ PER LF
	101 - 250 LF	/ PER LF
	251 - 500 LF	/ PER LF
	OVER 500 LF	/ PER LF
DELIVERY DAYS AFTER RECEIPT OF ORDER:		/ DAYS
V.7 FURNISH & INSTALL H.D.P.E. PIPE 12"		
WELLPOINTS (LUMP SUM)		/ PER DAY
		/ PER WEEK
TO 4' DEPTH	0 - 100 LF	/ PER LF
	101 - 250 LF	/ PER LF
	251 - 500 LF	/ PER LF
	OVER 500 LF	/ PER LF

BIDDER: _____

AUTHORIZED SIGNATURE: _____

BID FORM
IFB # 16-0212-DS
ROAD BUILDING MATERIALS AND SERVICES

SECTION V - STORMWATER, WASTEWATER & WATER UTILITIES FDOT 425 and 430		(MATERIAL AND SERVICE)
4' - 6' DEPTH	0 - 100 LF	/ PER LF
	101 - 250 LF	/ PER LF
	251 - 500 LF	/ PER LF
	OVER 500 LF	/ PER LF
6' - 8' DEPTH	0 - 100 LF	/ PER LF
	101 - 250 LF	/ PER LF
	251 - 500 LF	/ PER LF
	OVER 500 LF	/ PER LF
8' - 10' DEPTH	0 - 100 LF	/ PER LF
	101 - 250 LF	/ PER LF
	251 - 500 LF	/ PER LF
	OVER 500 LF	/ PER LF
DELIVERY DAYS AFTER RECEIPT OF ORDER:		/ DAYS
V.8 FURNISH & INSTALL H.D.P.E. PIPE 15"		
WELLPOINTS (LUMP SUM)		/ PER DAY
		/ PER WEEK
TO 4' DEPTH	0 - 100 LF	/ PER LF
	101 - 250 LF	/ PER LF
	251 - 500 LF	/ PER LF
	OVER 500 LF	/ PER LF
4' - 6' DEPTH	0 - 100 LF	/ PER LF
	101 - 250 LF	/ PER LF
	251 - 500 LF	/ PER LF
	OVER 500 LF	/ PER LF

BIDDER: _____

AUTHORIZED SIGNATURE: _____

BID FORM
IFB # 16-0212-DS
ROAD BUILDING MATERIALS AND SERVICES

SECTION V - STORMWATER, WASTEWATER & WATER UTILITIES FDOT 425 and 430		(MATERIAL AND SERVICE)
6' - 8' DEPTH	0 - 100 LF	/ PER LF
	101 - 250 LF	/ PER LF
	251 - 500 LF	/ PER LF
	OVER 500 LF	/ PER LF
8' - 10' DEPTH	0 - 100 LF	/ PER LF
	101 - 250 LF	/ PER LF
	251 - 500 LF	/ PER LF
	OVER 500 LF	/ PER LF
DELIVERY DAYS AFTER RECEIPT OF ORDER:		/ DAYS
V.9 FURNISH & INSTALL H.D.P.E. PIPE 18"		
WELLPOINTS (LUMP SUM)		/ PER DAY
		/ PER WEEK
TO 4' DEPTH	0 - 100 LF	/ PER LF
	101 - 250 LF	/ PER LF
	251 - 500 LF	/ PER LF
	OVER 500 LF	/ PER LF
4' - 6' DEPTH	0 - 100 LF	/ PER LF
	101 - 250 LF	/ PER LF
	251 - 500 LF	/ PER LF
	OVER 500 LF	/ PER LF
6' - 8' DEPTH	0 - 100 LF	/ PER LF
	101 - 250 LF	/ PER LF
	251 - 500 LF	/ PER LF
	OVER 500 LF	/ PER LF

BIDDER: _____

AUTHORIZED SIGNATURE: _____

BID FORM
IFB # 16-0212-DS
ROAD BUILDING MATERIALS AND SERVICES

SECTION V - STORMWATER, WASTEWATER & WATER UTILITIES FDOT 425 and 430		(MATERIAL AND SERVICE)
8' - 10' DEPTH	0 - 100 LF	/ PER LF
	101 - 250 LF	/ PER LF
	251 - 500 LF	/ PER LF
	OVER 500 LF	/ PER LF
DELIVERY DAYS AFTER RECEIPT OF ORDER:		/ DAYS
V.10 FURNISH & INSTALL H.D.P.E. PIPE 24"		
WELLPOINTS (LUMP SUM)		/ PER DAY
		/ PER WEEK
TO 4' DEPTH	0 - 100 LF	/ PER LF
	101 - 250 LF	/ PER LF
	251 - 500 LF	/ PER LF
	OVER 500 LF	/ PER LF
4' - 6' DEPTH	0 - 100 LF	/ PER LF
	101 - 250 LF	/ PER LF
	251 - 500 LF	/ PER LF
	OVER 500 LF	/ PER LF
6' - 8' DEPTH	0 - 100 LF	/ PER LF
	101 - 250 LF	/ PER LF
	251 - 500 LF	/ PER LF
	OVER 500 LF	/ PER LF
8' - 10' DEPTH	0 - 100 LF	/ PER LF
	101 - 250 LF	/ PER LF
	251 - 500 LF	/ PER LF
	OVER 500 LF	/ PER LF

BIDDER: _____

AUTHORIZED SIGNATURE: _____

BID FORM
IFB # 16-0212-DS
ROAD BUILDING MATERIALS AND SERVICES

SECTION V - STORMWATER, WASTEWATER & WATER UTILITIES FDOT 425 and 430		(MATERIAL AND SERVICE)
DELIVERY DAYS AFTER RECEIPT OF ORDER:		/ DAYS
V.11 FURNISH & INSTALL H.D.P.E. PIPE 30"		
WELLPOINTS (LUMP SUM)		/ PER DAY
		/ PER WEEK
TO 4' DEPTH	0 - 100 LF	/ PER LF
	101 - 250 LF	/ PER LF
	251 - 500 LF	/ PER LF
	OVER 500 LF	/ PER LF
4' - 6' DEPTH	0 - 100 LF	/ PER LF
	101 - 250 LF	/ PER LF
	251 - 500 LF	/ PER LF
	OVER 500 LF	/ PER LF
6' - 8' DEPTH	0 - 100 LF	/ PER LF
	101 - 250 LF	/ PER LF
	251 - 500 LF	/ PER LF
	OVER 500 LF	/ PER LF
8' - 10' DEPTH	0 - 100 LF	/ PER LF
	101 - 250 LF	/ PER LF
	251 - 500 LF	/ PER LF
	OVER 500 LF	/ PER LF
DELIVERY DAYS AFTER RECEIPT OF ORDER:		/ DAYS
V.12 FURNISH & INSTALL H.D.P.E. PIPE 36"		
WELLPOINTS (LUMP SUM)		/ PER DAY
		/ PER WEEK

BIDDER: _____

AUTHORIZED SIGNATURE: _____

BID FORM
IFB # 16-0212-DS
ROAD BUILDING MATERIALS AND SERVICES

SECTION V - STORMWATER, WASTEWATER & WATER UTILITIES FDOT 425 and 430		(MATERIAL AND SERVICE)
TO 4' DEPTH	0 - 100 LF	/ PER LF
	101 - 250 LF	/ PER LF
	251 - 500 LF	/ PER LF
	OVER 500 LF	/ PER LF
4' - 6' DEPTH	0 - 100 LF	/ PER LF
	101 - 250 LF	/ PER LF
	251 - 500 LF	/ PER LF
	OVER 500 LF	/ PER LF
6' - 8' DEPTH	0 - 100 LF	/ PER LF
	101 - 250 LF	/ PER LF
	251 - 500 LF	/ PER LF
	OVER 500 LF	/ PER LF
8' - 10' DEPTH	0 - 100 LF	/ PER LF
	101 - 250 LF	/ PER LF
	251 - 500 LF	/ PER LF
	OVER 500 LF	/ PER LF
DELIVERY DAYS AFTER RECEIPT OF ORDER:		/ DAYS
V.13 FURNISH & INSTALL H.D.P.E. PIPE 42"		
WELLPOINTS (LUMP SUM)		/ PER DAY
		/ PER WEEK
TO 4' DEPTH	0 - 100 LF	/ PER LF
	101 - 250 LF	/ PER LF
	251 - 500 LF	/ PER LF
	OVER 500 LF	/ PER LF

BIDDER: _____

AUTHORIZED SIGNATURE: _____

BID FORM
IFB # 16-0212-DS
ROAD BUILDING MATERIALS AND SERVICES

SECTION V - STORMWATER, WASTEWATER & WATER UTILITIES FDOT 425 and 430		(MATERIAL AND SERVICE)
4' - 6' DEPTH	0 - 100 LF	/ PER LF
	101 - 250 LF	/ PER LF
	251 - 500 LF	/ PER LF
	OVER 500 LF	/ PER LF
6' - 8' DEPTH	0 - 100 LF	/ PER LF
	101 - 250 LF	/ PER LF
	251 - 500 LF	/ PER LF
	OVER 500 LF	/ PER LF
8' - 10' DEPTH	0 - 100 LF	/ PER LF
	101 - 250 LF	/ PER LF
	251 - 500 LF	/ PER LF
	OVER 500 LF	/ PER LF
DELIVERY DAYS AFTER RECEIPT OF ORDER:		/ DAYS
V.14 FURNISH & INSTALL H.D.P.E. PIPE 48"		
WELLPOINTS (LUMP SUM)		/ PER DAY
		/ PER WEEK
TO 4' DEPTH	0 - 100 LF	/ PER LF
	101 - 250 LF	/ PER LF
	251 - 500 LF	/ PER LF
	OVER 500 LF	/ PER LF
4' - 6' DEPTH	0 - 100 LF	/ PER LF
	101 - 250 LF	/ PER LF
	251 - 500 LF	/ PER LF
	OVER 500 LF	/ PER LF

BIDDER: _____

AUTHORIZED SIGNATURE: _____

BID FORM
IFB # 16-0212-DS
ROAD BUILDING MATERIALS AND SERVICES

SECTION V - STORMWATER, WASTEWATER & WATER UTILITIES FDOT 425 and 430		(MATERIAL AND SERVICE)
6' - 8' DEPTH	0 - 100 LF	/ PER LF
	101 - 250 LF	/ PER LF
	251 - 500 LF	/ PER LF
	OVER 500 LF	/ PER LF
8' - 10' DEPTH	0 - 100 LF	/ PER LF
	101 - 250 LF	/ PER LF
	251 - 500 LF	/ PER LF
	OVER 500 LF	/ PER LF
DELIVERY DAYS AFTER RECEIPT OF ORDER:		/ DAYS
V.15 FURNISH & INSTALL H.D.P.E. PIPE 54"		
WELLPOINTS (LUMP SUM)		/ PER DAY
		/ PER WEEK
TO 4' DEPTH	0 - 100 LF	/ PER LF
	101 - 250 LF	/ PER LF
	251 - 500 LF	/ PER LF
	OVER 500 LF	/ PER LF
4' - 6' DEPTH	0 - 100 LF	/ PER LF
	101 - 250 LF	/ PER LF
	251 - 500 LF	/ PER LF
	OVER 500 LF	/ PER LF
6' - 8' DEPTH	0 - 100 LF	/ PER LF
	101 - 250 LF	/ PER LF
	251 - 500 LF	/ PER LF
	OVER 500 LF	/ PER LF

BIDDER: _____

AUTHORIZED SIGNATURE: _____

BID FORM
IFB # 16-0212-DS
ROAD BUILDING MATERIALS AND SERVICES

SECTION V - STORMWATER, WASTEWATER & WATER UTILITIES FDOT 425 and 430		(MATERIAL AND SERVICE)
8' - 10' DEPTH	0 - 100 LF	/ PER LF
	101 - 250 LF	/ PER LF
	251 - 500 LF	/ PER LF
	OVER 500 LF	/ PER LF
DELIVERY DAYS AFTER RECEIPT OF ORDER:		/ DAYS
V.16 FURNISH & INSTALL H.D.P.E. PIPE 60"		
WELLPOINTS (LUMP SUM)		/ PER DAY
		/ PER WEEK
TO 4' DEPTH	0 - 100 LF	/ PER LF
	101 - 250 LF	/ PER LF
	251 - 500 LF	/ PER LF
	OVER 500 LF	/ PER LF
4' - 6' DEPTH	0 - 100 LF	/ PER LF
	101 - 250 LF	/ PER LF
	251 - 500 LF	/ PER LF
	OVER 500 LF	/ PER LF
6' - 8' DEPTH	0 - 100 LF	/ PER LF
	101 - 250 LF	/ PER LF
	251 - 500 LF	/ PER LF
	OVER 500 LF	/ PER LF
8' - 10' DEPTH	0 - 100 LF	/ PER LF
	101 - 250 LF	/ PER LF
	251 - 500 LF	/ PER LF
	OVER 500 LF	/ PER LF
DELIVERY DAYS AFTER RECEIPT OF ORDER:		/ DAYS

BIDDER: _____

AUTHORIZED SIGNATURE: _____

BID FORM
IFB # 16-0212-DS
ROAD BUILDING MATERIALS AND SERVICES

SECTION V - STORMWATER, WASTEWATER & WATER UTILITIES FDOT 425 and 430		(MATERIAL AND SERVICE)
V.17 FURNISH & INSTALL CONCRETE STORM DRAIN - 15" DIAMETER		
WELLPOINTS (LUMP SUM)		/ PER DAY
		/ PER WEEK
TO 4' DEPTH	0 - 100 LF	/ PER LF
	101 - 250 LF	/ PER LF
	251 - 500 LF	/ PER LF
	OVER 500 LF	/ PER LF
4' - 6' DEPTH	0 - 100 LF	/ PER LF
	101 - 250 LF	/ PER LF
	251 - 500 LF	/ PER LF
	OVER 500 LF	/ PER LF
6' - 8' DEPTH	0 - 100 LF	/ PER LF
	101 - 250 LF	/ PER LF
	251 - 500 LF	/ PER LF
	OVER 500 LF	/ PER LF
8' - 10' DEPTH	0 - 100 LF	/ PER LF
	101 - 250 LF	/ PER LF
	251 - 500 LF	/ PER LF
	OVER 500 LF	/ PER LF
DELIVERY DAYS AFTER RECEIPT OF ORDER:		/ DAYS
V.18 FURNISH & INSTALL CONCRETE STORM DRAIN - 18" DIAMETER		
WELLPOINTS (LUMP SUM)		/ PER DAY
		/ PER WEEK

BIDDER: _____

AUTHORIZED SIGNATURE: _____

BID FORM
IFB # 16-0212-DS
ROAD BUILDING MATERIALS AND SERVICES

SECTION V - STORMWATER, WASTEWATER & WATER UTILITIES FDOT 425 and 430		(MATERIAL AND SERVICE)
TO 4' DEPTH	0 - 100 LF	/ PER LF
	101 - 250 LF	/ PER LF
	251 - 500 LF	/ PER LF
	OVER 500 LF	/ PER LF
4' - 6' DEPTH	0 - 100 LF	/ PER LF
	101 - 250 LF	/ PER LF
	251 - 500 LF	/ PER LF
	OVER 500 LF	/ PER LF
6' - 8' DEPTH	0 - 100 LF	/ PER LF
	101 - 250 LF	/ PER LF
	251 - 500 LF	/ PER LF
	OVER 500 LF	/ PER LF
8' - 10' DEPTH	0 - 100 LF	/ PER LF
	101 - 250 LF	/ PER LF
	251 - 500 LF	/ PER LF
	OVER 500 LF	/ PER LF
DELIVERY DAYS AFTER RECEIPT OF ORDER:		/ DAYS
V.19 FURNISH & INSTALL CONCRETE STORM DRAIN - 24" DIAMETER		
WELLPOINTS (LUMP SUM)		/ PER DAY
		/ PER WEEK
TO 4' DEPTH	0 - 100 LF	/ PER LF
	101 - 250 LF	/ PER LF
	251 - 500 LF	/ PER LF
	OVER 500 LF	/ PER LF

BIDDER: _____

AUTHORIZED SIGNATURE: _____

BID FORM
IFB # 16-0212-DS
ROAD BUILDING MATERIALS AND SERVICES

SECTION V - STORMWATER, WASTEWATER & WATER UTILITIES FDOT 425 and 430		(MATERIAL AND SERVICE)
4' - 6' DEPTH	0 - 100 LF	/ PER LF
	101 - 250 LF	/ PER LF
	251 - 500 LF	/ PER LF
	OVER 500 LF	/ PER LF
6' - 8' DEPTH	0 - 100 LF	/ PER LF
	101 - 250 LF	/ PER LF
	251 - 500 LF	/ PER LF
	OVER 500 LF	/ PER LF
8' - 10' DEPTH	0 - 100 LF	/ PER LF
	101 - 250 LF	/ PER LF
	251 - 500 LF	/ PER LF
	OVER 500 LF	/ PER LF
DELIVERY DAYS AFTER RECEIPT OF ORDER:		/ DAYS
V.20 FURNISH & INSTALL CONCRETE STORM DRAIN - 30" DIAMETER		
WELLPOINTS (LUMP SUM)		/ PER DAY
		/ PER WEEK
TO 4' DEPTH	0 - 100 LF	/ PER LF
	101 - 250 LF	/ PER LF
	251 - 500 LF	/ PER LF
	OVER 500 LF	/ PER LF
4' - 6' DEPTH	0 - 100 LF	/ PER LF
	101 - 250 LF	/ PER LF
	251 - 500 LF	/ PER LF
	OVER 500 LF	/ PER LF

BIDDER: _____

AUTHORIZED SIGNATURE: _____

BID FORM
IFB # 16-0212-DS
ROAD BUILDING MATERIALS AND SERVICES

SECTION V - STORMWATER, WASTEWATER & WATER UTILITIES FDOT 425 and 430		(MATERIAL AND SERVICE)
6' - 8' DEPTH	0 - 100 LF	/ PER LF
	101 - 250 LF	/ PER LF
	251 - 500 LF	/ PER LF
	OVER 500 LF	/ PER LF
8' - 10' DEPTH	0 - 100 LF	/ PER LF
	101 - 250 LF	/ PER LF
	251 - 500 LF	/ PER LF
	OVER 500 LF	/ PER LF
DELIVERY DAYS AFTER RECEIPT OF ORDER:		/ DAYS
V.21 FURNISH & INSTALL CONCRETE STORM DRAIN - 36" DIAMETER EQUIVALENT		
WELLPOINTS (LUMP SUM)		/ PER DAY
		/ PER WEEK
TO 4' DEPTH	0 - 100 LF	/ PER LF
	101 - 250 LF	/ PER LF
	251 - 500 LF	/ PER LF
	OVER 500 LF	/ PER LF
4' - 6' DEPTH	0 - 100 LF	/ PER LF
	101 - 250 LF	/ PER LF
	251 - 500 LF	/ PER LF
	OVER 500 LF	/ PER LF
6' - 8' DEPTH	0 - 100 LF	/ PER LF
	101 - 250 LF	/ PER LF
	251 - 500 LF	/ PER LF
	OVER 500 LF	/ PER LF

BIDDER: _____

AUTHORIZED SIGNATURE: _____

BID FORM
IFB # 16-0212-DS
ROAD BUILDING MATERIALS AND SERVICES

SECTION V - STORMWATER, WASTEWATER & WATER UTILITIES FDOT 425 and 430		(MATERIAL AND SERVICE)
8' - 10' DEPTH	0 - 100 LF	/ PER LF
	101 - 250 LF	/ PER LF
	251 - 500 LF	/ PER LF
	OVER 500 LF	/ PER LF
DELIVERY DAYS AFTER RECEIPT OF ORDER:		/ DAYS
V.22 FURNISH & INSTALL CONCRETE STORM DRAIN - 42" DIAMETER OR EQUIVALENT		
WELLPOINTS (LUMP SUM)		/ PER DAY
		/ PER WEEK
TO 4' DEPTH	0 - 100 LF	/ PER LF
	101 - 250 LF	/ PER LF
	251 - 500 LF	/ PER LF
	OVER 500 LF	/ PER LF
4' - 6' DEPTH	0 - 100 LF	/ PER LF
	101 - 250 LF	/ PER LF
	251 - 500 LF	/ PER LF
	OVER 500 LF	/ PER LF
6' - 8' DEPTH	0 - 100 LF	/ PER LF
	101 - 250 LF	/ PER LF
	251 - 500 LF	/ PER LF
	OVER 500 LF	/ PER LF
8' - 10' DEPTH	0 - 100 LF	/ PER LF
	101 - 250 LF	/ PER LF
	251 - 500 LF	/ PER LF
	OVER 500 LF	/ PER LF

BIDDER: _____

AUTHORIZED SIGNATURE: _____

BID FORM
IFB # 16-0212-DS
ROAD BUILDING MATERIALS AND SERVICES

--

SECTION V - STORMWATER, WASTEWATER & WATER UTILITIES FDOT 425 and 430	(MATERIAL AND SERVICE)
---	-------------------------------

DELIVERY DAYS AFTER RECEIPT OF ORDER:	/ DAYS
---------------------------------------	--------

V.23 FURNISH & INSTALL CONCRETE STORM DRAIN - 48" DIAMETER OR EQUIVALENT

WELLPOINTS (LUMP SUM)		/ PER DAY
		/ PER WEEK
TO 4' DEPTH	0 - 100 LF	/ PER LF
	101 - 250 LF	/ PER LF
	251 - 500 LF	/ PER LF
	OVER 500 LF	/ PER LF
4' - 6' DEPTH	0 - 100 LF	/ PER LF
	101 - 250 LF	/ PER LF
	251 - 500 LF	/ PER LF
	OVER 500 LF	/ PER LF
6' - 8' DEPTH	0 - 100 LF	/ PER LF
	101 - 250 LF	/ PER LF
	251 - 500 LF	/ PER LF
	OVER 500 LF	/ PER LF
8' - 10' DEPTH	0 - 100 LF	/ PER LF
	101 - 250 LF	/ PER LF
	251 - 500 LF	/ PER LF
	OVER 500 LF	/ PER LF

DELIVERY DAYS AFTER RECEIPT OF ORDER:	/ DAYS
---------------------------------------	--------

V.24 FURNISH & INSTALL CONCRETE STORM DRAIN - 54" DIAMETER OR EQUIVALENT

WELLPOINTS (LUMP SUM)		/ PER DAY
		/ PER WEEK

BIDDER: _____

AUTHORIZED SIGNATURE: _____

BID FORM
IFB # 16-0212-DS
ROAD BUILDING MATERIALS AND SERVICES

SECTION V - STORMWATER, WASTEWATER & WATER UTILITIES FDOT 425 and 430		(MATERIAL AND SERVICE)
TO 4' DEPTH	0 - 100 LF	/ PER LF
	101 - 250 LF	/ PER LF
	251 - 500 LF	/ PER LF
	OVER 500 LF	/ PER LF
4' - 6' DEPTH	0 - 100 LF	/ PER LF
	101 - 250 LF	/ PER LF
	251 - 500 LF	/ PER LF
	OVER 500 LF	/ PER LF
6' - 8' DEPTH	0 - 100 LF	/ PER LF
	101 - 250 LF	/ PER LF
	251 - 500 LF	/ PER LF
	OVER 500 LF	/ PER LF
8' - 10' DEPTH	0 - 100 LF	/ PER LF
	101 - 250 LF	/ PER LF
	251 - 500 LF	/ PER LF
	OVER 500 LF	/ PER LF
DELIVERY DAYS AFTER RECEIPT OF ORDER:		/ DAYS
V.25 FURNISH & INSTALL CONCRETE STORM DRAIN - 60" DIAMETER OR EQUIVALENT		
WELLPOINTS (LUMP SUM)		/ PER DAY
		/ PER WEEK
6' - 8' DEPTH	0 - 100 LF	/ PER LF
	101 - 250 LF	/ PER LF
	251 - 500 LF	/ PER LF
	OVER 500 LF	/ PER LF

BIDDER: _____

AUTHORIZED SIGNATURE: _____

BID FORM
IFB # 16-0212-DS
ROAD BUILDING MATERIALS AND SERVICES

SECTION V - STORMWATER, WASTEWATER & WATER UTILITIES FDOT 425 and 430		(MATERIAL AND SERVICE)
8' - 10' DEPTH	0 - 100 LF	/ PER LF
	101 - 250 LF	/ PER LF
	251 - 500 LF	/ PER LF
	OVER 500 LF	/ PER LF
DELIVERY DAYS AFTER RECEIPT OF ORDER:		/ DAYS
V.26 FURNISH & INSTALL CONCRETE STORM DRAIN - 66" DIAMETER OR EQUIVALENT		
WELLPOINTS (LUMP SUM)		/ PER DAY
		/ PER WEEK
6' - 8' DEPTH	0 - 100 LF	/ PER LF
	101 - 250 LF	/ PER LF
	251 - 500 LF	/ PER LF
	OVER 500 LF	/ PER LF
8' - 10' DEPTH	0 - 100 LF	/ PER LF
	101 - 250 LF	/ PER LF
	251 - 500 LF	/ PER LF
	OVER 500 LF	/ PER LF
DELIVERY DAYS AFTER RECEIPT OF ORDER:		/ DAYS
V.27 FURNISH & INSTALL CONCRETE STORM DRAIN - 72" DIAMETER OR EQUIVALENT		
WELLPOINTS (LUMP SUM)		/ PER DAY
		/ PER WEEK
6' - 8' DEPTH	0 - 100 LF	/ PER LF
	101 - 250 LF	/ PER LF
	251 - 500 LF	/ PER LF
	OVER 500 LF	/ PER LF

BIDDER: _____

AUTHORIZED SIGNATURE: _____

BID FORM
IFB # 16-0212-DS
ROAD BUILDING MATERIALS AND SERVICES

SECTION V - STORMWATER, WASTEWATER & WATER UTILITIES FDOT 425 and 430		(MATERIAL AND SERVICE)
8' - 10' DEPTH	0 - 100 LF	/ PER LF
	101 - 250 LF	/ PER LF
	251 - 500 LF	/ PER LF
	OVER 500 LF	/ PER LF
DELIVERY DAYS AFTER RECEIPT OF ORDER:		/ DAYS
V.28	FURNISH & INSTALL CONCRETE STORM DRAIN 15" MITERED END	/ PER EACH
V.29	FURNISH & INSTALL CONCRETE STORM DRAIN 18" MITERED END	/ PER EACH
V.30	FURNISH & INSTALL CONCRETE STORM DRAIN 24" MITERED END	/ PER EACH
V.31	FURNISH & INSTALL CONCRETE STORM DRAIN 30" MITERED END	/ PER EACH
V.32	FURNISH & INSTALL CONCRETE STORM DRAIN 36" DIAMETER MITERED END	/ PER EACH
	GRATING FOR MITERED END SECTION	/ PER EACH
	GRATING FOR MITERED END SECTION	/ PER EACH
V.33	FURNISH & INSTALL CONCRETE STORM DRAIN 42" OR EQUIV MITERED END	/ PER EACH
	GRATING FOR MITERED END SECTION	/ PER EACH
V.34	FURNISH & INSTALL CONCRETE STORM DRAIN 48" OR EQUIV MITERED END	/ PER EACH
	GRATING FOR MITERED END SECTION	/ PER EACH
V.35	FURNISH & INSTALL CONCRETE STORM DRAIN 48" OR EQUIV MITERED END	/ PER EACH
	GRATING FOR MITERED END SECTION	/ PER EACH
V.36	FURNISH & INSTALL CONCRETE STORM DRAIN 54" OR EQUIV MITERED END	/ PER EACH

BIDDER: _____

AUTHORIZED SIGNATURE: _____

BID FORM
IFB # 16-0212-DS
ROAD BUILDING MATERIALS AND SERVICES

SECTION V - STORMWATER, WASTEWATER & WATER UTILITIES FDOT 425 and 430		(MATERIAL AND SERVICE)
	GRATING FOR MITERED END SECTION	/ PER EACH
V.37	FURNISH & INSTALL CONCRETE STORM DRAIN 60" OR EQUIV MITERED END	/ PER EACH
	GRATING FOR MITERED END SECTION	/ PER EACH
V.38	FURNISH & INSTALL CONCRETE STORM DRAIN 66" OR EQUIV MITERED END	/ PER EACH
	GRATING FOR MITERED END SECTION	/ PER EACH
V.39	ALTERNATE MANHOLE ADJUSTMENT - Specification: Adjust manhole lid. Backfill with Type III Asphaltic Concrete. Heat, scarify and rework existing Asphaltic Concrete bordering cut and blend with new material. Composite mix to be shaped and compacted. (see specification)	
	1 - 5 UNITS	/ PER UNIT
	6 - 10 UNITS	/ PER UNIT
	OVER 10 UNITS	/ PER UNIT
	DELIVERY DAYS AFTER RECEIPT OF ORDER:	/ DAYS
V.40	MANHOLE AND WATER VALVE ADJUSTMENT AS A PART OF BASE RECONSTRUCTION (see specification)	
	MANHOLE ADJUSTMENT	/ EACH
	WATER VALVE ADJUSTMENT	/ EACH
	DELIVERY DAYS AFTER RECEIPT OF ORDER:	/ DAYS
V.41	CONSTRUCT CONCRETE BLOCK CATCH BASIN 4'0"x5'4" - (Manatee County Spec: 202.1)	
	TO 4' HEIGHT	/ EACH

BIDDER: _____

AUTHORIZED SIGNATURE: _____

BID FORM
IFB # 16-0212-DS
ROAD BUILDING MATERIALS AND SERVICES

SECTION V - STORMWATER, WASTEWATER & WATER UTILITIES FDOT 425 and 430	(MATERIAL AND SERVICE)
4.1' TO 6' HEIGHT	/ EACH
6'1' TO 8' HEIGHT	/ EACH
DELIVERY DAYS AFTER RECEIPT OF ORDER:	/ DAYS
V.42 CONSTRUCT CONCRETE BLOCK CATCH BASIN 5'4"x5'4" (Manatee County Spec: 202.1)	
TO 4' HEIGHT	/ EACH
4.1' TO 6' HEIGHT	/ EACH
6'1' TO 8' HEIGHT	/ EACH
DELIVERY DAYS AFTER RECEIPT OF ORDER:	/ DAYS
V.43 CONSTRUCT CONCRETE BLOCK CATCH BASIN 6'4"x5'4" (Manatee County Spec: 202.1)	
TO 4' HEIGHT	/ EACH
4.1' TO 6' HEIGHT	/ EACH
6'1' TO 8' HEIGHT	/ EACH
DELIVERY DAYS AFTER RECEIPT OF ORDER:	/ DAYS
V.44 CONSTRUCT P-5 CURB INLET - (FDOT Section 425)	
CONSTRUCT P-5 CURB INLET	/ EACH
DELIVERY DAYS AFTER RECEIPT OF ORDER:	/ DAYS

BIDDER: _____

AUTHORIZED SIGNATURE: _____

BID FORM
IFB # 16-0212-DS
ROAD BUILDING MATERIALS AND SERVICES

SECTION V - STORMWATER, WASTEWATER & WATER UTILITIES FDOT 425 and 430	(MATERIAL AND SERVICE)
V.45 CONSTRUCT J-5 CURB INLET - (FDOT Section 425)	
CONSTRUCT P-5 CURB INLET	/ EACH
DELIVERY DAYS AFTER RECEIPT OF ORDER:	/ DAYS
V.46 CONSTRUCT J-6 CURB INLET - (FDOT Section 425)	
CONSTRUCT J-6 CURB INLET	/ EACH
DELIVERY DAYS AFTER RECEIPT OF ORDER:	/ DAYS
V.47 CONSTRUCT TYPE 5 CURB INLET LID FDOT DESIGN STANDARDS, INDEX No. 211	
CONSTRUCT TYPE 5 CURB INLET LID	/ EACH
DELIVERY DAYS AFTER RECEIPT OF ORDER:	/ DAYS
V.48 CONSTRUCT TYPE 6 CURB INLET LID, FDOT DESIGN STANDARDS, INDEX No. 211	
CONSTRUCT TYPE 6 CURB INLET LID	/ EACH
DELIVERY DAYS AFTER RECEIPT OF ORDER:	/ DAYS
V.49 CONSTRUCT P-6 CURB INLET, FDOT DESIGN STANDARDS, INDEX No. 211	
CONSTRUCT P-6 CURB INLET	/ EACH
DELIVERY DAYS AFTER RECEIPT OF ORDER:	/ DAYS
V.50 FURNISH & INSTALL 6" UNDERDRAIN (PIPE, SOCK, AGGREGATE) - (Manatee County Spec: 204)	

BIDDER: _____

AUTHORIZED SIGNATURE: _____

BID FORM
IFB # 16-0212-DS
ROAD BUILDING MATERIALS AND SERVICES

SECTION V - STORMWATER, WASTEWATER & WATER UTILITIES FDOT 425 and 430		(MATERIAL AND SERVICE)
0 - 100 LF		/ LF
100 - 500 LF		/ LF
500 - 1,000 LF		/ LF
OVER 1,000 LF		/ LF
DELIVERY DAYS AFTER RECEIPT OF ORDER:		/ DAYS
V.51 TIE UNDERDRAIN INTO EXISTING BOX (Manatee County spec. 204)		/ EACH
V.52 FURNISH & INSTALL 6" UNDERDRAIN CLEAN-OUT WITH CONCRETE PAD (Manatee County spec. 204)		/ EACH
V.53 INSTALL CONCRETE COLLAR (see specification)		
15" PIPE OR EQUIVALENT	0 - 4' DEPTH	/ PER EACH
	4' - 8' DEPTH	/ PER EACH
18" PIPE OR EQUIVALENT	0 - 4' DEPTH	/ PER EACH
	4' - 8' DEPTH	/ PER EACH
24" PIPE OR EQUIVALENT	0 - 4' DEPTH	/ PER EACH
	4' - 8' DEPTH	/ PER EACH
30" PIPE OR EQUIVALENT	0 - 4' DEPTH	/ PER EACH
	4' - 8' DEPTH	/ PER EACH
36" PIPE OR EQUIVALENT	0 - 4' DEPTH	/ PER EACH
	4' - 8' DEPTH	/ PER EACH
	8' - 10' DEPTH	/ PER EACH
42" PIPE OR EQUIVALENT	0 - 4' DEPTH	/ PER EACH
	4' - 8' DEPTH	/ PER EACH
	8' - 10' DEPTH	/ PER EACH

BIDDER: _____

AUTHORIZED SIGNATURE: _____

BID FORM
IFB # 16-0212-DS
ROAD BUILDING MATERIALS AND SERVICES

SECTION V - STORMWATER, WASTEWATER & WATER UTILITIES FDOT 425 and 430		(MATERIAL AND SERVICE)
48" PIPE OR EQUIVALENT	0 - 4' DEPTH	/ PER EACH
	4' - 8' DEPTH	/ PER EACH
	8' - 10' DEPTH	/ PER EACH
54" PIPE OR EQUIVALENT	0 - 4' DEPTH	/ PER EACH
	4' - 8' DEPTH	/ PER EACH
	8' - 10' DEPTH	/ PER EACH
60" PIPE OR EQUIVALENT	0 - 4' DEPTH	/ PER EACH
	4' - 8' DEPTH	/ PER EACH
	8' - 10' DEPTH	/ PER EACH
66" PIPE OR EQUIVALENT	0 - 4' DEPTH	/ PER EACH
	4' - 8' DEPTH	/ PER EACH
	8' - 10' DEPTH	/ PER EACH
72" PIPE OR EQUIVALENT	0 - 4' DEPTH	/ PER EACH
	4' - 8' DEPTH	/ PER EACH
	8' - 10' DEPTH	/ PER EACH
84" PIPE OR EQUIVALENT	0 - 4' DEPTH	/ PER EACH
	4' - 8' DEPTH	/ PER EACH
	8' - 10' DEPTH	/ PER EACH
DELIVERY DAYS AFTER RECEIPT OF ORDER:		/ DAYS
V.54 REMOVE CONCRETE COLLAR (see specification)		
15" PIPE OR EQUIVALENT	0 - 4' DEPTH	/ PER EACH
	4' - 8' DEPTH	/ PER EACH
18" PIPE OR EQUIVALENT	0 - 4' DEPTH	/ PER EACH
	4' - 8' DEPTH	/ PER EACH

BIDDER: _____

AUTHORIZED SIGNATURE: _____

BID FORM
IFB # 16-0212-DS
ROAD BUILDING MATERIALS AND SERVICES

SECTION V - STORMWATER, WASTEWATER & WATER UTILITIES FDOT 425 and 430		(MATERIAL AND SERVICE)
24" PIPE OR EQUIVALENT	0 - 4' DEPTH	/ PER EACH
	4' - 8' DEPTH	/ PER EACH
30" PIPE OR EQUIVALENT	0 - 4' DEPTH	/ PER EACH
	4' - 8' DEPTH	/ PER EACH
36" PIPE OR EQUIVALENT	0 - 4' DEPTH	/ PER EACH
	4' - 8' DEPTH	/ PER EACH
	8' - 10' DEPTH	/ PER EACH
42" PIPE OR EQUIVALENT	0 - 4' DEPTH	/ PER EACH
	4' - 8' DEPTH	/ PER EACH
	8' - 10' DEPTH	/ PER EACH
48" PIPE OR EQUIVALENT	0 - 4' DEPTH	/ PER EACH
	4' - 8' DEPTH	/ PER EACH
	8' - 10' DEPTH	/ PER EACH
54" PIPE OR EQUIVALENT	0 - 4' DEPTH	/ PER EACH
	4' - 8' DEPTH	/ PER EACH
	8' - 10' DEPTH	/ PER EACH
60" PIPE OR EQUIVALENT	0 - 4' DEPTH	/ PER EACH
	4' - 8' DEPTH	/ PER EACH
	8' - 10' DEPTH	/ PER EACH
66" PIPE OR EQUIVALENT	0 - 4' DEPTH	/ PER EACH
	4' - 8' DEPTH	/ PER EACH
	8' - 10' DEPTH	/ PER EACH
72" PIPE OR EQUIVALENT	0 - 4' DEPTH	/ PER EACH
	4' - 8' DEPTH	/ PER EACH
	8' - 10' DEPTH	/ PER EACH

BIDDER: _____

AUTHORIZED SIGNATURE: _____

BID FORM
IFB # 16-0212-DS
ROAD BUILDING MATERIALS AND SERVICES

SECTION V - STORMWATER, WASTEWATER & WATER UTILITIES FDOT 425 and 430		(MATERIAL AND SERVICE)
84" PIPE OR EQUIVALENT	0 - 4' DEPTH	/ PER EACH
	4' - 8' DEPTH	/ PER EACH
	8' - 10' DEPTH	/ PER EACH
DELIVERY DAYS AFTER RECEIPT OF ORDER:		/ DAYS
V.55 REMOVE BOX INLET (see specification)		
UNDER 40" BOX		/ PER EACH
40" X 48" BOX		/ PER EACH
64" X 64" BOX		/ PER EACH
DELIVERY DAYS AFTER RECEIPT OF ORDER:		/ DAYS
V.56 REMOVE CONCRETE DRAINAGE STRUCTURE (see specification)		
REMOVAL OF DRAINAGE STRUCTURE		/ PER CY
DELIVERY DAYS AFTER RECEIPT OF ORDER:		/ DAYS
V.57 INLET MODIFICATION (ONE SIDE)		
MODIFY 48" BOX	0 - 4' DEPTH	/ PER EACH
	4' - 8' DEPTH	/ PER EACH
	8' - 10' DEPTH	/ PER EACH
MODIFY 64" BOX	0 - 4' DEPTH	/ PER EACH
	4' - 8' DEPTH	/ PER EACH
	8' - 10' DEPTH	/ PER EACH
DELIVERY DAYS AFTER RECEIPT OF ORDER:		/ DAYS
V.58 FURNISH AND INSTALL ELLIPTICAL PIPE 12" x 18" (All pipe is RCP and Class 4 (IV) (FDOT 430)		
WELLPOINTS (LUMP SUM)		/ PER DAY
		/ PER WEEK

BIDDER: _____

AUTHORIZED SIGNATURE: _____

BID FORM
IFB # 16-0212-DS
ROAD BUILDING MATERIALS AND SERVICES

SECTION V - STORMWATER, WASTEWATER & WATER UTILITIES FDOT 425 and 430		(MATERIAL AND SERVICE)
TO 4' DEPTH	0 - 100 LF	/ PER LF
	101 - 250 LF	/ PER LF
	251 - 500 LF	/ PER LF
	OVER 500 LF	/ PER LF
4' - 6' DEPTH	0 - 100 LF	/ PER LF
	101 - 250 LF	/ PER LF
	251 - 500 LF	/ PER LF
	OVER 500 LF	/ PER LF
6' - 8' DEPTH	0 - 100 LF	/ PER LF
	101 - 250 LF	/ PER LF
	251 - 500 LF	/ PER LF
	OVER 500 LF	/ PER LF
8' - 10' DEPTH	0 - 100 LF	/ PER LF
	101 - 250 LF	/ PER LF
	251 - 500 LF	/ PER LF
	OVER 500 LF	/ PER LF
DELIVERY DAYS AFTER RECEIPT OF ORDER:		/ DAYS
V.59	FURNISH AND INSTALL ELLIPTICAL PIPE 14" X 23", All pipe is RCP and Class 4 (IV) (FDOT 430)	
WELLPOINTS (LUMP SUM)		/ PER DAY
		/ PER WEEK
TO 4' DEPTH	0 - 100 LF	/ PER LF
	101 - 250 LF	/ PER LF
	251 - 500 LF	/ PER LF
	OVER 500 LF	/ PER LF

BIDDER: _____

AUTHORIZED SIGNATURE: _____

BID FORM
IFB # 16-0212-DS
ROAD BUILDING MATERIALS AND SERVICES

SECTION V - STORMWATER, WASTEWATER & WATER UTILITIES FDOT 425 and 430		(MATERIAL AND SERVICE)
4' - 6' DEPTH	0 - 100 LF	/ PER LF
	101 - 250 LF	/ PER LF
	251 - 500 LF	/ PER LF
	OVER 500 LF	/ PER LF
6' - 8' DEPTH	0 - 100 LF	/ PER LF
	101 - 250 LF	/ PER LF
	251 - 500 LF	/ PER LF
	OVER 500 LF	/ PER LF
8' - 10' DEPTH	0 - 100 LF	/ PER LF
	101 - 250 LF	/ PER LF
	251 - 500 LF	/ PER LF
	OVER 500 LF	/ PER LF
DELIVERY DAYS AFTER RECEIPT OF ORDER:		/ DAYS
V.60	FURNISH AND INSTALL ELLIPTICAL PIPE 19" x 30", All pipe is RCP and Class 4 (IV) (FDOT 430)	
WELLPOINTS (LUMP SUM)		/ PER DAY
		/ PER WEEK
TO 4' DEPTH	0 - 100 LF	/ PER LF
	101 - 250 LF	/ PER LF
	251 - 500 LF	/ PER LF
	OVER 500 LF	/ PER LF
4' - 6' DEPTH	0 - 100 LF	/ PER LF
	101 - 250 LF	/ PER LF
	251 - 500 LF	/ PER LF
	OVER 500 LF	/ PER LF

BIDDER: _____

AUTHORIZED SIGNATURE: _____

BID FORM
IFB # 16-0212-DS
ROAD BUILDING MATERIALS AND SERVICES

SECTION V - STORMWATER, WASTEWATER & WATER UTILITIES FDOT 425 and 430		(MATERIAL AND SERVICE)
6' - 8' DEPTH	0 - 100 LF	/ PER LF
	101 - 250 LF	/ PER LF
	251 - 500 LF	/ PER LF
	OVER 500 LF	/ PER LF
8' - 10' DEPTH	0 - 100 LF	/ PER LF
	101 - 250 LF	/ PER LF
	251 - 500 LF	/ PER LF
	OVER 500 LF	/ PER LF
DELIVERY DAYS AFTER RECEIPT OF ORDER:		/ DAYS
V.61	FURNISH AND INSTALL ELLIPTICAL PIPE 24" x 38", All pipe is RCP and Class 4 (IV) (FDOT 430)	
WELLPOINTS (LUMP SUM)		/ PER DAY
		/ PER WEEK
TO 4' DEPTH	0 - 100 LF	/ PER LF
	101 - 250 LF	/ PER LF
	251 - 500 LF	/ PER LF
	OVER 500 LF	/ PER LF
4' - 6' DEPTH	0 - 100 LF	/ PER LF
	101 - 250 LF	/ PER LF
	251 - 500 LF	/ PER LF
	OVER 500 LF	/ PER LF
6' - 8' DEPTH	0 - 100 LF	/ PER LF
	101 - 250 LF	/ PER LF
	251 - 500 LF	/ PER LF
	OVER 500 LF	/ PER LF

BIDDER: _____

AUTHORIZED SIGNATURE: _____

BID FORM
IFB # 16-0212-DS
ROAD BUILDING MATERIALS AND SERVICES

SECTION V - STORMWATER, WASTEWATER & WATER UTILITIES FDOT 425 and 430		(MATERIAL AND SERVICE)
8' - 10' DEPTH	0 - 100 LF	/ PER LF
	101 - 250 LF	/ PER LF
	251 - 500 LF	/ PER LF
	OVER 500 LF	/ PER LF
DELIVERY DAYS AFTER RECEIPT OF ORDER:		/ DAYS
V.62	FURNISH & INSTALL REINFORCED CONCRETE STORM DRAIN 12"X 18" MITERED END (FDOT 430)	/ PER EACH
V.63	FURNISH & INSTALL REINFORCED CONCRETE STORM DRAIN 14" X 23" MITERED END (FDOT 430)	/ PER EACH
V.64	FURNISH & INSTALL REINFORCED CONCRETE STORM DRAIN 19" X 30" MITERED END (FDOT 430)	/ PER EACH
V.65	FURNISH & INSTALL REINFORCED CONCRETE STORM DRAIN 24" X 38" MITERED END (FDOT 430)	/ PER EACH
GRATING FOR MITERED END SECTION		/ PER EACH
V.66	FURNISH & INSTALL FLOWABLE FILL (FDOT 121)	/ PER CY
V.67	FURNISH & INSTALL RIPRAP -FDOT SPEC 530 (2000)	
	SAND CEMENT	/ PER CY
	RIP RAP RUBBLE	/ PER TON
	BEDDING STONE	/ PER TON

BIDDER: _____

AUTHORIZED SIGNATURE: _____

BID FORM
IFB #16-0212-DS
ROAD BUILDING MATERIALS AND SERVICES

SECTION VI - CURB AND GUTTER, SIDEWALKS AND DRIVEWAYS	(MATERIAL AND SERVICE)
VI.1 MIAMI CURB AND GUTTER - (Manatee County Spec: 201.1)	
0 - 500 LF	/ PER LF
501 - 2,000 LF	/ PER LF
OVER 2,000 LF	/ PER LF
DELIVERY DAYS AFTER RECEIPT OF ORDER:	/ DAYS
VI.2 TYPE "F" BARRIER CURB AND GUTTER - (Manatee County Spec: 201.0 & 201.2)	
0 - 500 LF	/ PER LF
501 - 2,000 LF	/ PER LF
OVER 2,000 LF	/ PER LF
DELIVERY DAYS AFTER RECEIPT OF ORDER:	/ DAYS
VI.3 MODIFIED TYPE "F" CURB (see specifications)	
0 - 500 LF	/ PER LF
501 - 2,000 LF	/ PER LF
OVER 2,000 LF	/ PER LF
DELIVERY DAYS AFTER RECEIPT OF ORDER:	/ DAYS
VI.4 TYPE "A" MEDIAN CURB AND GUTTER - (Manatee County Spec: 201.0 & 201.3)	
0 - 500 LF	/ PER LF
501 - 2,000 LF	/ PER LF
OVER 2,000 LF	/ PER LF
DELIVERY DAYS AFTER RECEIPT OF ORDER:	/ DAYS

BIDDER: _____

AUTHORIZED SIGNATURE: _____

BID FORM
IFB #16-0212-DS
ROAD BUILDING MATERIALS AND SERVICES

SECTION VI - CURB AND GUTTER, SIDEWALKS AND DRIVEWAYS	(MATERIAL AND SERVICE)
VI.5 FDOT HEADWALLS	
ITEMS INCLUDE REBAR	/ PER CY
VI.6 TYPE "D" HIGHBACK CURB - (Manatee County Spec: 201.0 & 201.4)	
0 - 500 LF	/ PER LF
501 - 2,000 LF	/ PER LF
OVER 2,000 LF	/ PER LF
DELIVERY DAYS AFTER RECEIPT OF ORDER:	/ DAYS
VI.7 TYPE "E" CURB - (FDOT INDEX 300)	
0 - 500 LF	/ PER LF
501 - 2,000 LF	/ PER LF
OVER 2,000 LF	/ PER LF
DELIVERY DAYS AFTER RECEIPT OF ORDER:	/ DAYS
VI.8 TYPE "A" VALLEY CROSSING - (Manatee County Spec: 201.6)	
TYPE "A" VALLEY CROSSING	/ PER LF
MIAMI CURB & GUTTER ON RADIUS	/ PER LF
REMOVE NECESSARY PAVEMENT, BASE, CURB & GUTTER TO INSTALL NEW VALLEY CROSSING	/ PER LF
DELIVERY DAYS AFTER RECEIPT OF ORDER:	/ DAYS
VI.9 TYPE "B" VALLEY CROSSING - (Manatee County Spec: 201.6)	

BIDDER: _____

AUTHORIZED SIGNATURE: _____

SECTION VI

BID FORM
IFB #16-0212-DS
ROAD BUILDING MATERIALS AND SERVICES

SECTION VI - CURB AND GUTTER, SIDEWALKS AND DRIVEWAYS	(MATERIAL AND SERVICE)
TYPE "B" VALLEY CROSSING	/ PER LF
MIAMI CURB & GUTTER ON RADIUS	/ PER LF
REMOVE NECESSARY PAVEMENT, BASE, CURB & GUTTER TO INSTALL NEW VALLEY CROSSING	/ PER LF
DELIVERY DAYS AFTER RECEIPT OF ORDER:	/ DAYS
VI.10 CONSTRUCT SIDEWALK / DRIVEWAY, (FDOT 520 & 522 and MC 200 & 300)	
2,500 PSI RANDOM x 4"	/ PER SY
3,000 PSI RANDOM x 4"	/ PER SY
2,500 PSI RANDOM x 4" WITH 6 x 6 #10 MESH	/ PER SY
3,000 PSI RANDOM x 4" WITH 6 x 6 #10 MESH	/ PER SY
2,500 PSI RANDOM x 6"	/ PER SY
3,000 PSI RANDOM x 6"	/ PER SY
2,500 PSI RANDOM x 6" WITH 6 x 6 #10 MESH	/ PER SY
3,000 PSI RANDOM x 6" WITH 6 x 6 #10 MESH	/ PER SY
PREPARATION (GRADING, SHAPE, BASE PREPARATION TO INCLUDE 6" FILL AND/OR EXCAVATION	/ PER SY
ADDITIONAL FILL	/ PER CY
ADDITIONAL EXCAVATION	/ PER CY
DELIVERY DAYS AFTER RECEIPT OF ORDER:	/ DAYS
VI.11 MISCELLANEOUS CONCRETE FORMED AND POURED (see specifications)	
3,000 PSI	/ PER CY
4,000 PSI	/ PER CY

BIDDER: _____

AUTHORIZED SIGNATURE: _____

SECTION VI

BID FORM
IFB #16-0212-DS
ROAD BUILDING MATERIALS AND SERVICES

SECTION VI - CURB AND GUTTER, SIDEWALKS AND DRIVEWAYS		(MATERIAL AND SERVICE)
DELIVERY DAYS AFTER RECEIPT OF ORDER:		/ DAYS
VI.12 REMOVE CONCRETE SIDEWALK / DRIVEWAY (2500 PSI) (see specification)		
4" THICKNESS:		
0 - 100 SF		/ PER SF
101 - 250 SF		/ PER SF
251 - 500 SF		/ PER SF
OVER 500 SF		/ PER SF
6" THICKNESS:		
0 - 100 SF		/ PER SF
101 - 250 SF		/ PER SF
251 - 500 SF		/ PER SF
OVER 500 SF		/ PER SF
DELIVERY DAYS AFTER RECEIPT OF ORDER:		/ DAYS
VI.13 REMOVE CONCRETE CURB & GUTTER (see specification)		
0 - 100 SF		/ PER SF
101 - 250 SF		/ PER SF
251 - 500 SF		/ PER SF
OVER 500 SF		/ PER SF
DELIVERY DAYS AFTER RECEIPT OF ORDER:		/ DAYS
VI.14 CONSTRUCT ASPHALT SIDEWALK / DRIVEWAY - Price to include excavation, asphalt material, labor and equipment (see specification)		
SAND ASPHALT - HOT MIX - 1200#		

BIDDER: _____

AUTHORIZED SIGNATURE: _____

SECTION VI

BID FORM
IFB #16-0212-DS
ROAD BUILDING MATERIALS AND SERVICES

SECTION VI - CURB AND GUTTER, SIDEWALKS AND DRIVEWAYS	(MATERIAL AND SERVICE)
4' x 4"	/ PER LF
5' x 4"	/ PER LF
6' x 4"	/ PER LF
8' x 4"	/ PER LF
4' x 6"	/ PER LF
5' x 6"	/ PER LF
6' x 6"	/ PER LF
8' x 6"	/ PER LF
ASPHALTIC CONCRETE - TYPE III	
4' x 4"	/ PER LF
5' x 4"	/ PER LF
6' x 4"	/ PER LF
8' x 4"	/ PER LF
4' x 6"	/ PER LF
5' x 6"	/ PER LF
6' x 6"	/ PER LF
8' x 6"	/ PER LF
DELIVERY DAYS AFTER RECEIPT OF ORDER:	/ DAYS
VI.15 PREPARATION FOR CURB & GUTTER (NEW NOT REPLACED) (see specification)	
PREPARATION +/- 6"	/ PER LF
ADDITIONAL FILL	/ PER CY
ADDITIONAL EXCAVATION	/ PER CY
DELIVERY DAYS AFTER RECEIPT OF ORDER:	/ DAYS
VI.16 CONCRETE PUMPING (see specification)	

BIDDER: _____

AUTHORIZED SIGNATURE: _____

BID FORM
IFB #16-0212-DS
ROAD BUILDING MATERIALS AND SERVICES

--

SECTION VI - CURB AND GUTTER, SIDEWALKS AND DRIVEWAYS	(MATERIAL AND SERVICE)
CONCRETE PUMPED	/ HOUR
CONCRETE PUMPED	/ DAY
DELIVERY DAYS AFTER RECEIPT OF ORDER:	/ DAYS
VI.17 ADA TRUNCATED DOME FURNISHED/INSTALLED (see specification)	
Furnish and Install	/ SQ FT
DELIVERY DAYS AFTER RECEIPT OF ORDER:	/ DAYS
VI.18 STANDARD MAIL BOX RELOCATE	EACH
VI.19 IRRIGATION CAP	EACH

BIDDER: _____

AUTHORIZED SIGNATURE: _____

BID FORM
IFB # 16-0212-DS
ROAD BUILDING MATERIALS AND SERVICES

SECTION VII - TRAFFIC CONTROL		(MATERIAL AND SERVICE)
VII.1	TEMPORARY TRAFFIC CONTROL DETECTION (PER SITE) - (FDOT Section 102-107)	
	TRAFFIC CONTROL	/ PER DAY
	DELIVERY DAYS AFTER RECEIPT OF ORDER:	/ DAYS
VII.2	GUARDRAIL - (FDOT 536-1) - Price Vendor Delivered & Installed per Job Site	
	0 - 250 LF	/ PER LF
	OVER 251 LF	/ PER LF
	DELIVERY DAYS AFTER RECEIPT OF ORDER:	/ DAYS
VII.3	SHOP - BENT PANELS -(FDOT 536-2) - Price Vendor Delivered and Installed per Job Site	
	0 - 12.5 LF	/ PER LF
	OVER 12.5 LF	/ PER LF
	DELIVERY DAYS AFTER RECEIPT OF ORDER:	/ DAYS
VII.4	SPECIAL POST (MINIMUM 2 EACH) - (FDOT Section 536-7) - Price Vendor Delivered and Installed per Job Site	
	0 - 4	/ PER EA
	OVER 4	/ PER EA
	DELIVERY DAYS AFTER RECEIPT OF ORDER:	/ DAYS
VII.5	TYPE IV ENDS (MIN. 2 EACH) (FDOT 536-8) - Price Vendor Delivered and Installed per Job Site	

BIDDER: _____

AUTHORIZED SIGNATURE: _____

BID FORM
IFB # 16-0212-DS
ROAD BUILDING MATERIALS AND SERVICES

--

SECTION VII - TRAFFIC CONTROL		(MATERIAL AND SERVICE)
0 - 4		/ PER EA
OVER 4		/ PER EA
DELIVERY DAYS AFTER RECEIPT OF ORDER:		/ DAYS
VII.6	GUARDRAIL POST REPLACEMENT (FDOT 536-83) - Price Vendor Delivered and Installed per Job Site	
0 - 4		/ PER EA
OVER 4		/ PER EA
DELIVERY DAYS AFTER RECEIPT OF ORDER:		/ DAYS

BIDDER: _____

AUTHORIZED SIGNATURE: _____

BID FORM
IFB # 16-0212-DS
ROAD BUILDING MATERIALS AND SERVICES

SECTION VIII - FENCING		(Material and Service)
<p>FENCING - Includes furnishing all labor, materials, equipment and such miscellaneous items as necessary for complete installation of chain link fence system; fencing to be installed according to manufacturer's specifications, unless otherwise specified. (FDOT 550)</p>		
VIII.1 CHAIN LINK FENCING TYPE A		
4' HEIGHT	0 - 100 LF	/ PER LF
	101 - 500 LF	/ PER LF
	OVER 501 LF	/ PER LF
DELIVERY DAYS AFTER RECEIPT OF ORDER:		/ DAYS
VIII.2 CHAIN LINK FENCING TYPE B		
4' HEIGHT	0 - 100 LF	/ PER LF
	101 - 500 LF	/ PER LF
	OVER 501 LF	/ PER LF
6' HEIGHT	0 - 100 LF	/ PER LF
	101 - 500 LF	/ PER LF
	OVER 501 LF	/ PER LF
8' HEIGHT	0 - 100 LF	/ PER LF
	101 - 500 LF	/ PER LF
	OVER 501 LF	/ PER LF
DELIVERY DAYS AFTER RECEIPT OF ORDER:		/ DAYS

BIDDER: _____

AUTHORIZED SIGNATURE: _____

BID FORM
IFB # 16-0212-DS
ROAD BUILDING MATERIALS AND SERVICES

SECTION VIII - FENCING		(Material and Service)
<p>FENCING - Includes furnishing all labor, materials, equipment and such miscellaneous items as necessary for complete installation of chain link fence system; fencing to be installed according to manufacturer's specifications, unless otherwise specified. (FDOT 550)</p>		
VIII.3 GATES		
4' HEIGHT	4' WIDE	/ PER EACH
	8' WIDE	/ PER EACH
	16' WIDE	/ PER EACH
6' HEIGHT	4' WIDE	/ PER EACH
	8' WIDE	/ PER EACH
	16' WIDE	/ PER EACH
8' HEIGHT	4' WIDE	/ PER EACH
	8' WIDE	/ PER EACH
	16' WIDE	/ PER EACH
DELIVERY DAYS AFTER RECEIPT OF ORDER:		/ DAYS

BIDDER: _____

AUTHORIZED SIGNATURE: _____

SECTION VIII

BID LABEL

Cut along the outside border and affix this label to your sealed bid envelope to identify it as a "Sealed Bid". Be sure to include the name of the company submitting the bid and the bid due date and time where requested.

MAILING LABEL TO AFFIX TO OUTSIDE OF SEALED BID PACKAGE:

DO NOT OPEN	SEALED BID	DO NOT OPEN
BIDDER NAME: _____		
Bid No.: IFB#16-0212-DS		
Bid Title: ROAD BUILDING MATERIALS AND SERVICES		
DUE DATE/TIME: _____ @ 3:00 PM		
DO NOT OPEN	SEALED BID	DO NOT OPEN

ATTACHMENT A
BIDDER'S QUESTIONNAIRE
(Submit in Duplicate)

The bidder warrants the truth and accuracy of all statements and answers herein contained. (Attach additional pages if necessary.)

THIS QUESTIONNAIRE MUST BE COMPLETED AND SUBMITTED WITH YOUR BID

1. Contact Information:

FEIN #: _____
License #: _____
License Issued to: _____
Date License Issued (MM/DD/YR): _____
Company Name: _____
Physical Address: _____
City: _____ State of Incorporation: _____ Zip Code: _____
Phone Number: () _____ Fax Number: () _____
Email address: _____

2. Bidding as: an individual __; a partnership __; a corporation __; a joint venture __

3. If a partnership, list names and addresses of partners; if a corporation, list names of officers, directors, shareholders, and state of incorporation; if joint venture, list names and address of ventures' and the same if any venture are a corporation for each such corporation, partnership, or joint venture:

4. Bidder is authorized to do business in the State of Florida: Yes No
For how many years? _____

5. Your organization has been in business (under this firm's name) as a

Is this firm in bankruptcy? _____

6. Bidder to submit a minimum of five (5) Chip Seal project references that have been completed within the past three years in the State of Florida. Attach a list of projects where this specific type of Work was performed. (If bidding on Chip Seal)

BIDDER: _____

7. Bidder to provide references of five previous successfully completed projects regarding full depth pavement reclamation (Portland Cement Stabilization), in the State of Florida with the bid. Attach listing.

8. Bidder to provide references of a minimum of three years' experience in the placement of Bituminous Asphaltic Materials.

9. Is this firm currently contemplating or in litigation? Provide summary details.

10. Have you ever been assessed liquidated damages under a contract during the past five (5) years? If so, state when, where (contact name, address and phone number) and why.

11. Have you ever failed to complete Work awarded to you? Or failed to complete projects within contract time? If so, state when, where (contact name, address, phone number) and why.

12. Have you ever been debarred or prohibited from providing a bid to a governmental entity? If yes, name the entity and describe the circumstances.

13. Will you subcontract any part of this Work? If so, describe which portion(s) and to whom.

14. If any, list MBE/DBE (with Agreement amount) to be utilized:

15. What equipment do you own to accomplish this Work? (A listing may be attached)

16. What equipment will you purchase/rent for the Work? (Specify which)

BIDDER: _____

ATTACHMENT B
PUBLIC CONTRACTING AND ENVIRONMENTAL CRIMES CERTIFICATION

SWORN STATEMENT PURSUANT TO ARTICLE V,
MANATEE COUNTY PROCUREMENT CODE

THIS FORM MUST BE SIGNED AND SWORN TO IN THE PRESENCE OF A NOTARY PUBLIC OR OTHER OFFICIAL AUTHORIZED TO ADMINISTER OATHS.

This sworn statement is submitted to the Manatee County Board of County Commissioners by

_____ [Print individual's name and title]

_____ for _____ [Print name of entity submitting sworn statement]

whose business address is _____

and (if applicable) its Federal Employer Identification Number (FEIN) is _____. If the entity has no FEIN, include the Social Security Number of the individual signing this sworn statement: _____.

I understand that no person or entity shall be awarded or receive an Owner's Agreement for public improvements, procurement of goods or services (including professional services) or an Owner's lease, franchise, concession or management agreement, or shall receive a grant of Owner's monies unless such person or entity has submitted a written certification to Owner that it has not:

(1) been convicted of bribery or attempting to bribe a public officer or employee of Manatee County, the State of Florida, or any other public entity, including, but not limited to the Government of the United States, any state, or any local government authority in the United States, in that officer's or employee's official capacity; or

(2) been convicted of an agreement or collusion among bidders or prospective bidders in restraint of freedom of competition, by agreement to bid a fixed price, or otherwise; or

(3) been convicted of a violation of an environmental law that, in the sole opinion of Owner's Purchasing Official, reflects negatively upon the ability of the person or entity to conduct business in a responsible manner; or

(4) made an admission of guilt of such conduct described in items (1), (2) or (3) above, which is a matter of record, but has not been prosecuted for such conduct, or has made an admission of guilt of such conduct, which is a matter of record, pursuant to formal prosecution. An admission of guilt shall be construed to include a plea of nolo contendere; or

(5) where an officer, official, agent or employee of a business entity has been convicted of or has admitted guilt to any of the crimes set forth above on behalf of such an entity and pursuant to the direction or authorization of an official thereof (including the person committing the offense, if he is an official of the business entity), the business shall be chargeable with the conduct herein above set forth. A business entity shall be chargeable with the conduct of an affiliated entity, whether wholly owned, partially owned, or one which has common ownership or a common Board of Directors. For purposes of this Form, business entities are affiliated if, directly or indirectly, one business entity controls or has the power to control another business entity, or if an individual or group of individuals controls or has the power to control both entities. Indicia of control shall include, without limitation, interlocking management or ownership, identity of interests among family members, shared organization of a business entity following the ineligibility of a business entity under this Article, or using substantially the same management, ownership or principles as the ineligible entity.

ATTACHMENT B
PUBLIC CONTRACTING AND ENVIRONMENTAL CRIMES CERTIFICATION

(Continued)

Any person or entity who claims that this Article is inapplicable to him/her/it because a conviction or judgment has been reversed by a court of competent jurisdiction shall prove the same with documentation satisfactory to Owner's Purchasing Official. Upon presentation of such satisfactory proof, the person or entity shall be allowed to contract with Owner.

I UNDERSTAND THAT THE SUBMISSION OF THIS FORM TO THE CONTRACTING OFFICER FOR MANATEE COUNTY IS VALID THROUGH DECEMBER 31 OF THE CALENDAR YEAR IN WHICH IT IS FILED. I ALSO UNDERSTAND THAT ANY AGREEMENT OR BUSINESS TRANSACTION SHALL PROVIDE FOR SUSPENSION OF PAYMENTS, OR TERMINATION, OR BOTH, IF THE CONTRACTING OFFICER OR COUNTY ADMINISTRATOR DETERMINES THAT **SUCH PERSON OR ENTITY HAS MADE FALSE CERTIFICATION.**

[Signature]

STATE OF FLORIDA
COUNTY OF _____

Sworn to and subscribed before me this ____ day of _____, 20____ by _____

Personally known _____ OR Produced identification _____
[Type of identification]

Notary Public Signature My commission expires _____

[Print, type or stamp Commissioned name of Notary Public]

Signatory Requirement - In the case of a business entity other than a partnership or a corporation, this affidavit shall be executed by an authorized agent of the entity. In the case of a partnership, this affidavit shall be executed by the general partner(s). In the case of a corporation, this affidavit shall be executed by the corporate president.



Angelina M. Colonnese

CLERK OF THE CIRCUIT COURT AND COMPTROLLER OF MANATEE COUNTY

1115 Manatee Avenue West, Bradenton, Florida 34205 - Phone (941) 749-1800 - Fax (941) 741-4082
P.O. Box 25400, Bradenton, Florida 34206 - www.manateeclerk.com

ATTACHMENT D: E PAYABLES APPLICATION

Company name _____

Contact person _____

Phone number _____

Email Address _____

FINANCE USE ONLY

Open orders: YES or NO

PEID _____

CREATE DATE _____

CONFIRMED WITH _____

Name and phone number

IFAS _____

BANK _____

INITIALS _____

Revised: September 30, 2015

Return completed form to:

Via email to: lori.bryan@manateeclerk.com

Via fax to: (941) 741-4011

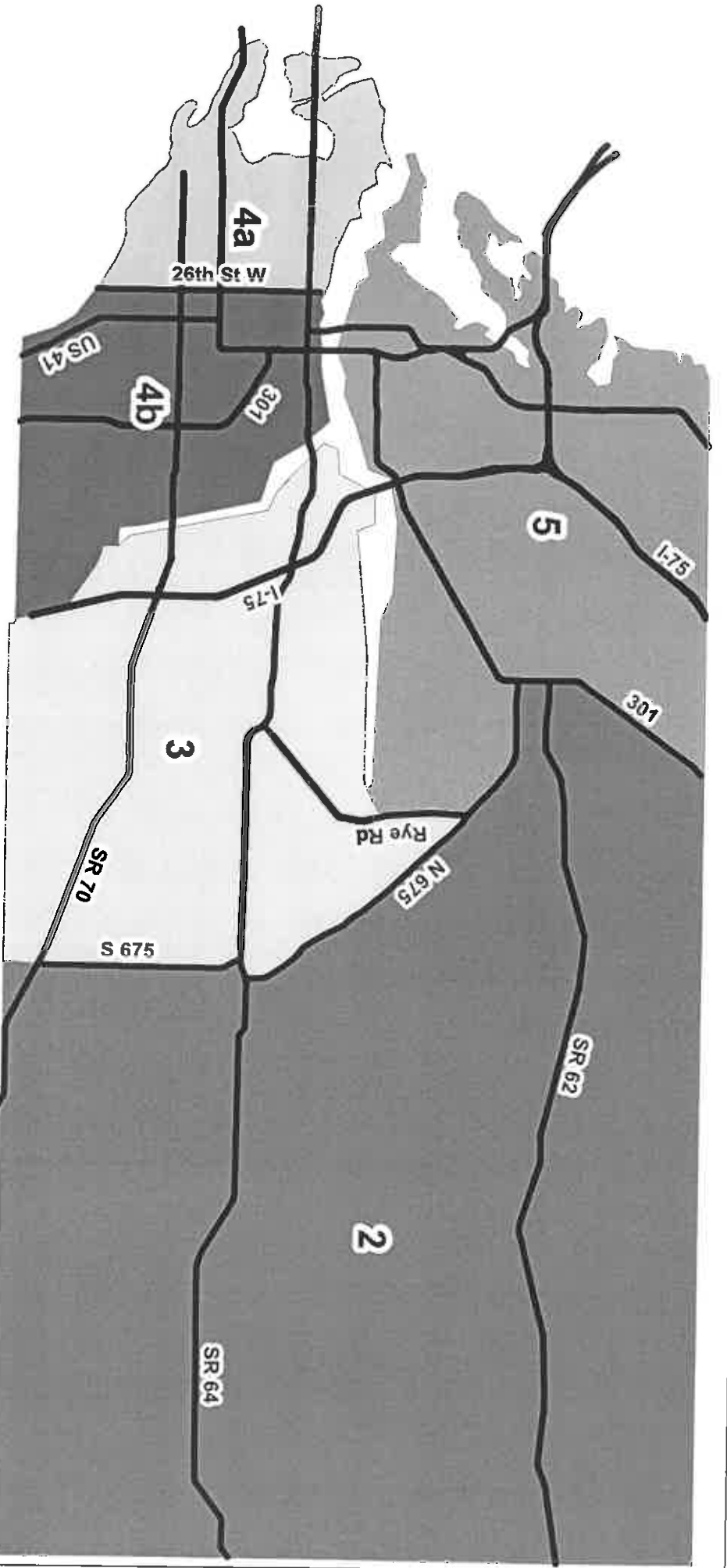
Via mail:

PO Box 1000

Bradenton, FL 34206

"Pride in Service with a Vision to the Future"

Clerk of the Circuit Court - Clerk of Board of County Commissioners - County Comptroller - Auditor and Recorder



ATTACHMENT E

Vendor Delivery Zones

This map was developed by the Manatee County Government. It is provided for general reference and is not warranted in any way. Errors from non-coincidence of features from different sources may exist. The Manatee County BOCC shall be held harmless for inappropriate or unintended uses of the information.



MATERIAL EXAMPLE

EXHIBIT 1 SAMPLE RELEASE ORDER

II.1	Asphalt Emulsion	970 Gal
IV.9	S-III asphaltic concrete	1090 Tons
IV.8	S-I asphaltic concrete	30 Tons
I.9	Shell Base Run	8000 Tons
I.16	Crushed concrete	2000 Tons

Deliver to: 4680 66th Street West, Bradenton, FL 34210.

PAVING EXAMPLE

EXHIBIT 2 SAMPLE RELEASE ORDER

	Item:	Qty:	Unit:
IV.44	Mobilization	1	LS
IV.31	Milling (5001 - 10,000)	5264	SY
IV.9	Type S-III Zone 4A	545	TN
IV.14	Sweep, Tack, Seal & Compact +100 (201 - 50 TONS)	395	TN
IV.14	Sweep, Tack, Seal & Compact -99 (499-201 TONS)	150	TN
IV.46	Maintenance of Traffic	4	DAY
III.21	Trucking Dump	32	HR
IV.42	Adjust Manholes	6	EA
III.29	Clip & Cleanup (0 - 200 LF)	20	LF

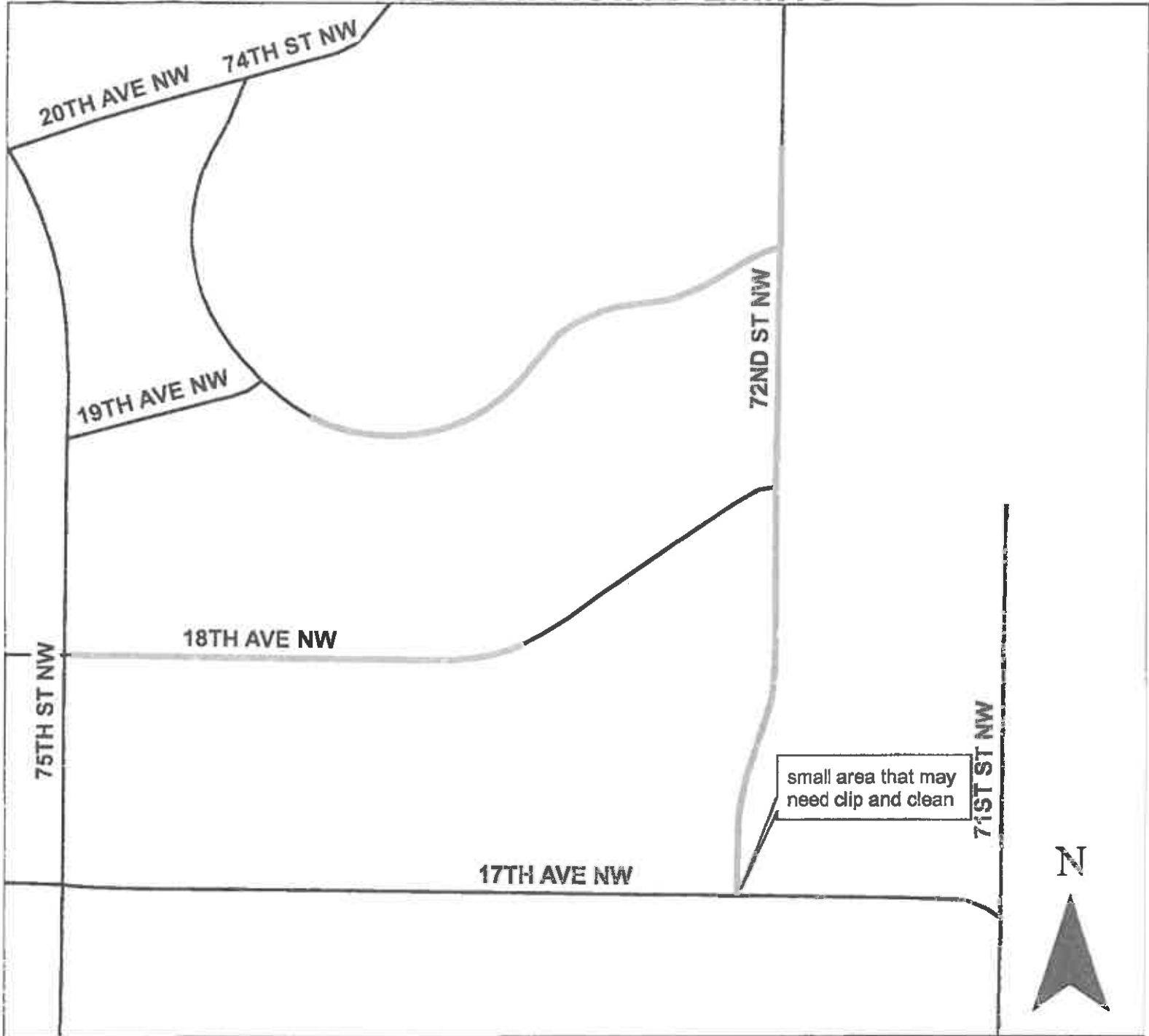
MILL 1" AND RESURFACE WITH 1 ¼" OF S-III

STREETS INCLUDE 72ND STREET NW FROM 17TH AVENUE TO PAVEMENT CHANGE, 18TH AVE NW FROM 75TH ST TO PC AND 19TH AVE FROM 72ND ST TO PC.

LEVEL ANY BAD AREAS IN A SINGLE LIFT, CONTRACTOR TO NOTIFY INSPECTOR OF ANY LEVELING AREAS

MILLING TO BE HAULED TO ERIE ROAD YARD, 8430 69TH ST E, PALMETTO.

RESURFACING LIMITS



RESIDENTS MUST BE NOTIFIED 48HRS PRIOR

MILL AND RESURFACE

Streets Include 72ND ST NW FROM 17TH AVE TO PAVEMENT CHANGE. 18TH AVE FROM 75TH TO PC. 19TH AVE FROM 72ND TO PC.



This map was developed by the Manatee County Government. It is provided for general reference and is not warranted in any way. Errors from non-coincidence of features from different sources may exist. The Manatee County BOCC shall be held harmless for inappropriate or unintended uses of the information.

RESURFACING PROJECT EXAMPLE

EXHIBIT 2 SAMPLE RELEASE ORDER

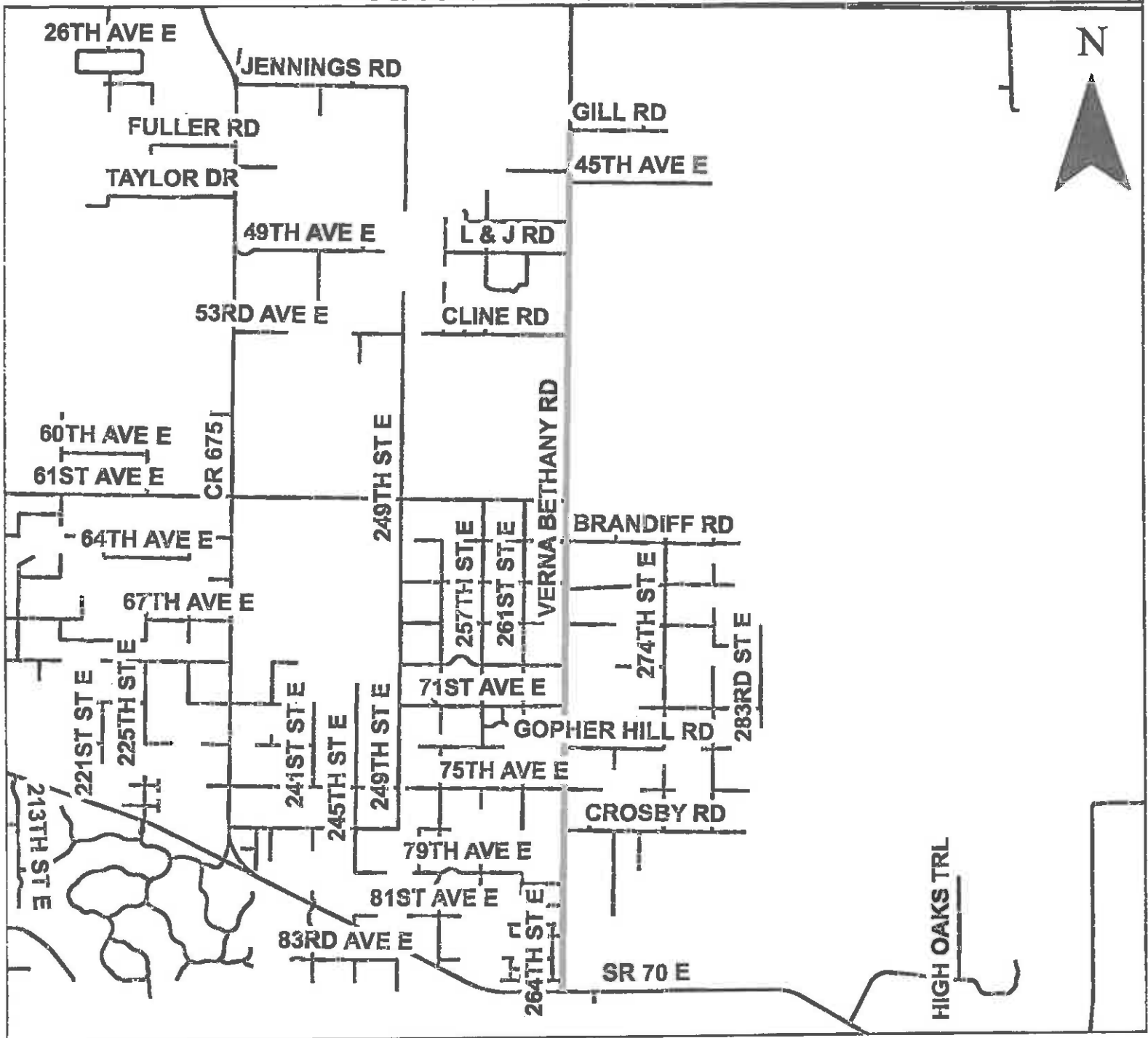
	Item:	Qty:	Unit:
IV.44	Mobilization	1	LS
IV.31	Milling + (10,000)	67462	SY
IV.8	Type S-I Zone 2	2529	TN
IV.9	Type S-III Zone 2	4216	TN
xxx	AC Index	6745	TN
IV.14	Sweep, Tack, Seal & Compact. -99 (+500 TONS)	2529	TN
IV.13	Sweep, Tack, Seal & Compact. +100 (+500 TONS)	4216	TN
I.6	Fill Dirt	689	CY
III.7	Fill Dirt Placing (0-200)	689	CY
III.29	Clip & Cleanup +2000 LF	55196	LF
IV.46	Maintenance of Traffic	12	DAY
III.21	Trucking Dump	400	HR
IV.34	Paint 6" Solid	21	NM
IV.36	Thermo 6" Solid	55690	LF
IV.34	Paint 6" Skip	2.6	GM
IV.36	Thermo 6" Skip	1.3	GM
IV.38	RPM Class "B"	700	EA
III.6F	Variable Message Boards	10	PD

MILL 1 ½" AND RESURFACE WITH 125 LBS S-I FOR LEVELING AND 75LBS OF S-III FOR SURFACE.

**STREETS INCLUDE VERNA BETHANY FROM PAVEMENT CHANGE AT GILL RD. SOUTH TO STATE RD. 70.
FILL DIRT WILL BE USED TO SLOPE SHOULDER 3 FEET IN WIDTH.
MESSAGE BOARDS WILL DISPLAY START DATE 5 DAYS PRIOR.**

MILLING TO BE HAULED TO ERIE ROAD YARD, 8430 69TH ST E, PALMETTO.

RESURFACING LIMITS



RESIDENTS MUST BE NOTIFIED 48HRS PRIOR

MILL AND RESURFACE

Streets Include **VERNA BETHANY FROM GILL RD SOUTH TO STATE RD 70**



This map was developed by the Manatee County Government. It is provided for general reference and is not warranted in any way. Errors from non-coincidence of features from different sources may exist. The Manatee County BOCC shall be held harmless for inappropriate or unintended uses of the information.