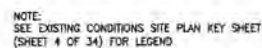


SEE SHEET 9 OF 34  
SEE SHEET 18 OF 34



APPROXIMATE MEAN  
HIGH WATER LINE  
EL = 1.25' NGVD 29



## PROJECT BOUNDARY

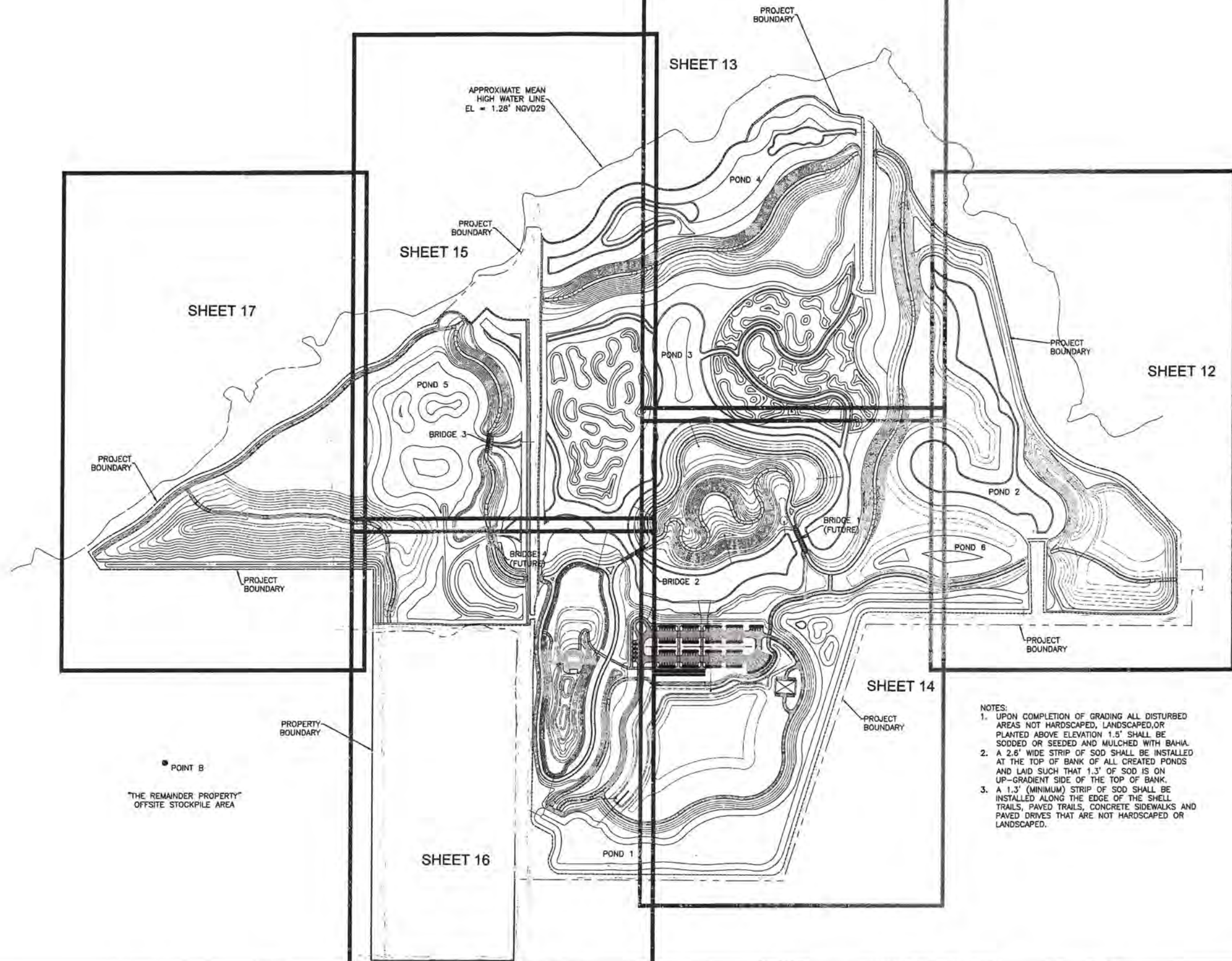
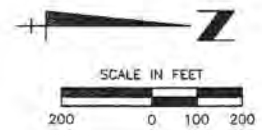
— PROJECT  
BOUNDARY

EX. 24° DIP  
N INV EL=1.30'  
S INV EL=1.37'

EX. 36° RCP  
N INV EL=1.13'  
S INV EL=0.39'



				ACTIVITY		INITIALS/EMP. ID.	DATE	<div><b>Stantec</b> 6000 Professional Parkway East, Sarasota, FL 34240-8414 Phone 941-907-6600 • Fax 941-907-6910 Website: <a href="http://www.stantec.com">www.stantec.com</a></div> <div>The Contractor shall verify and be responsible for all dimensions. DO NOT scale the drawing - any errors or omissions shall be reported to Stantec without delay. The Copyright is of design and drawings are the property of Stantec. Reproduction is void for any purpose other than that authorized by Stantec, is forbidden.</div>				CLIENT: MANATEE BOARD OF COUNTY COMMISSIONERS		DATE: JULY 2015	TITLE: EXISTING CONDITIONS SITE PLAN		<div> R. QUANCE SELLERS, P.E. FLORIDA LICENSE NO. 49374 DRAWER NUMBER</div>						
				DESIGNED BY:		ROS/89561	JULY 2015					PROJECT: ROBINSON PRESERVE EXPANSION		DATE: JULY 2015	VERTICAL SCALE:		CROSS REFERENCE FILE NO.: 215510519-01C		PROJECT NUMBER: 215510578		SHEET NUMBER: 10 OF 34		
				DRAWN BY:		AS/102671	JULY 2015					PHASE II RESTORATION				HORIZONTAL SCALE:		SHEET NUMBER: 10 OF 34					
				CHECKED BY:																			
				CONTRACT ADMIN. BY:																			
SHEET NO.		REVISION		DATE		DRAWN BY / EMP. NO.		CHECKED BY / EMP. NO.		WWW APPROVED BY:													



- NOTES:
1. UPON COMPLETION OF GRADING ALL DISTURBED AREAS NOT HARDSCAPED, LANDSCAPED, OR PLANTED ABOVE ELEVATION 1.5' SHALL BE SODDED OR SEEDED AND MULCHED WITH BAHIA. A 2.0' WIDE STRIP OF SOD SHALL BE INSTALLED AT THE TOP OF BANK OF ALL CREATED PONDS AND LAID SUCH THAT 1.3' OF SOD IS ON UP-GRADIENT SIDE OF THE TOP OF BANK.
  2. A 1.3' (MINIMUM) STRIP OF SOD SHALL BE INSTALLED ALONG THE EDGE OF THE SHELL TRAILS, PAVED TRAILS, CONCRETE SIDEWALKS AND PAVED DRIVES THAT ARE NOT HARDSCAPED OR LANDSCAPED.

Jul 15, 2015 11:54:15 AM C:\Users\j\Documents\215510578\215510578.dwg - Project - 215510578.dwg - 01.dwg - 11.dwg

REV. NO.	REVISION	DATE	DRAWN BY / EWP. NO.	CHECKED BY / EWP. NO.	DATE	ACTIVITY	INITIALS/EMP. I.D.	DATE
2	ADD POINT B	3/31/15	AS/102871	RGS/89561		DESIGNED BY:	RGS/89561	JULY 2015
1	REVISE SOD AREAS PER MCPNRD	9/11/14	AS/102871	RGS/89561		DRAWN BY:	AS/102871	JULY 2015
						CHECKED BY:		
						CONTRACT ADMIN. BY:		
						WM APPROVED BY:		



CLIENT: MANATEE BOARD OF COUNTY COMMISSIONERS  
PROJECT: ROBINSON PRESERVE EXPANSION PHASE II RESTORATION

DATE: JULY 2015  
HORIZONTAL SCALE:  
VERTICAL SCALE:  
SHEET NUMBER: 11 OF 34

SITE PLAN  
KEY SHEET



R. QUINCE SELLERS, P.E.  
FLORIDA LICENSE NO. 49374  
PROJECT NUMBER: 215510578