

LEGEND:
MANATEE COUNTY EXHIBIT A UTILITY ADJUSTMENTS L.S. (PRV)
MILLING AND RESURFACING

REVISIONS			
DATE	DESCRIPTION	DATE	DESCRIPTION

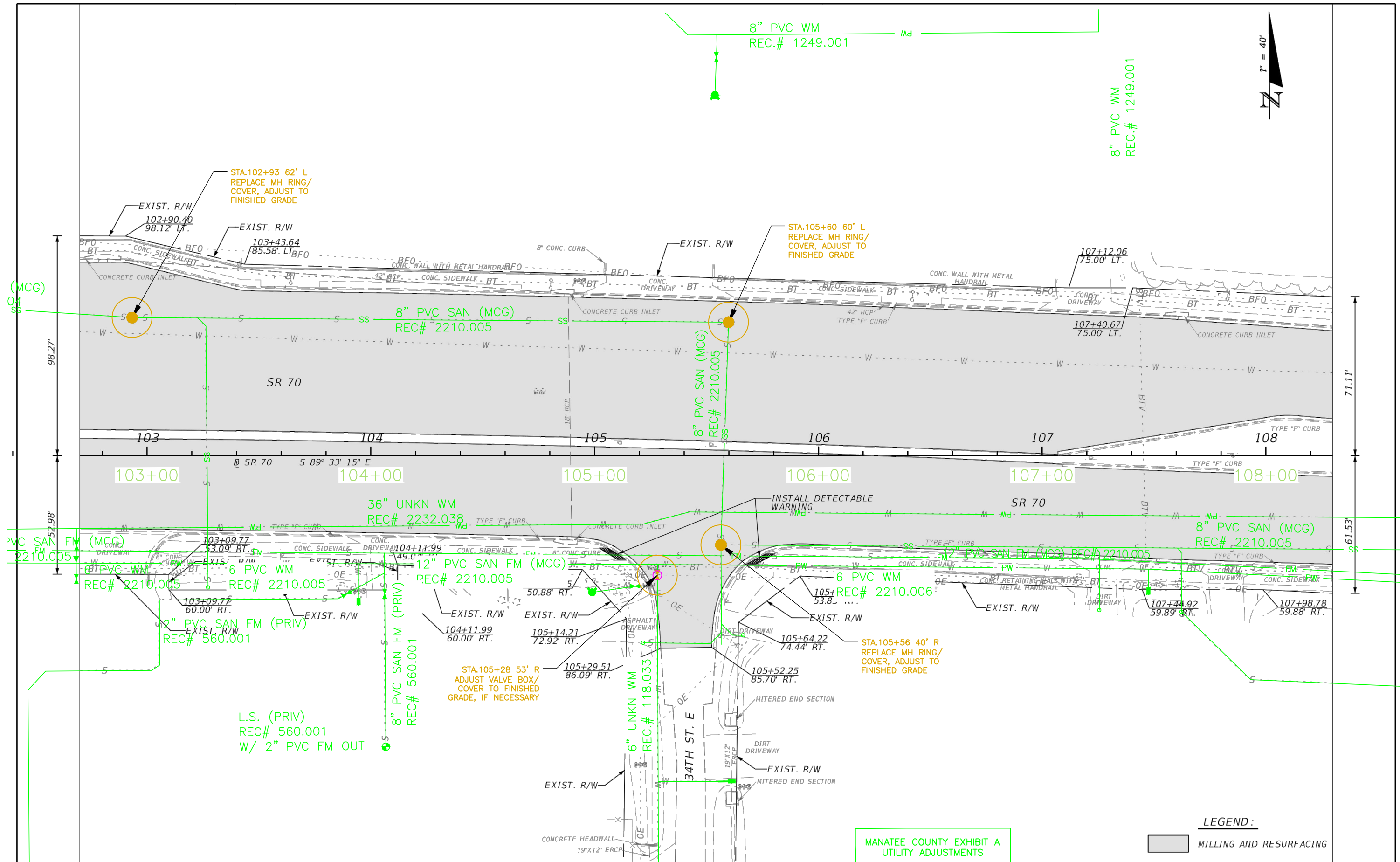
ENGINEER OF RECORD:
 KELLIE F. SPURGEON, P.E.
 P.E. LICENSE NUMBER 66484
 FLORIDA DEPARTMENT OF TRANSPORTATION
 801 N. BROADWAY AVENUE
 BARTOW, FL 33830-3809

STATE OF FLORIDA DEPARTMENT OF TRANSPORTATION		
ROAD NO.	COUNTY	FINANCIAL PROJECT ID
70	MANATEE	431207-1-52-01

ROADWAY PLAN

SHEET NO.
33

NOTICE: THE OFFICIAL RECORD OF THIS SHEET IS THE ELECTRONIC FILE SIGNED AND SEALED UNDER RULE 61G15-23.003



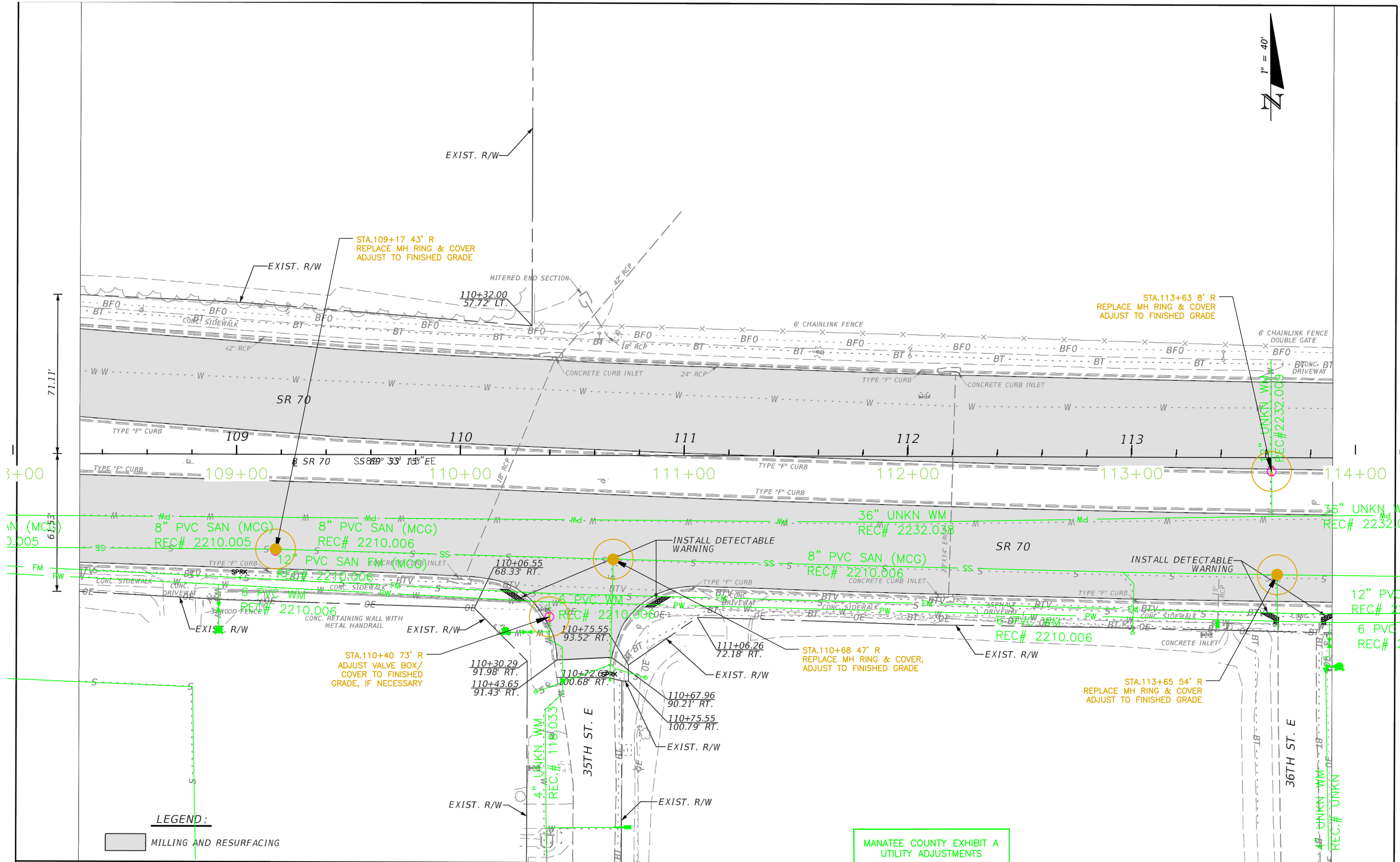
REVISIONS			
DATE	DESCRIPTION	DATE	DESCRIPTION

ENGINEER OF RECORD:
 KELLIE F. SPURGEON, P.E.
 P.E. LICENSE NUMBER 66484
 FLORIDA DEPARTMENT OF TRANSPORTATION
 801 N. BROADWAY AVENUE
 BARTOW, FL 33830-3809

STATE OF FLORIDA DEPARTMENT OF TRANSPORTATION		
ROAD NO.	COUNTY	FINANCIAL PROJECT ID
70	MANATEE	431207-1-52-01

ROADWAY PLAN SHEET NO. 34
--

NOTICE: THE OFFICIAL RECORD OF THIS SHEET IS THE ELECTRONIC FILE, SIGNED AND SEALED UNDER RULE 61G15-23.003, F.A.C.



LEGEND:

■ MILLING AND RESURFACING

REVISIONS			
DATE	DESCRIPTION	DATE	DESCRIPTION

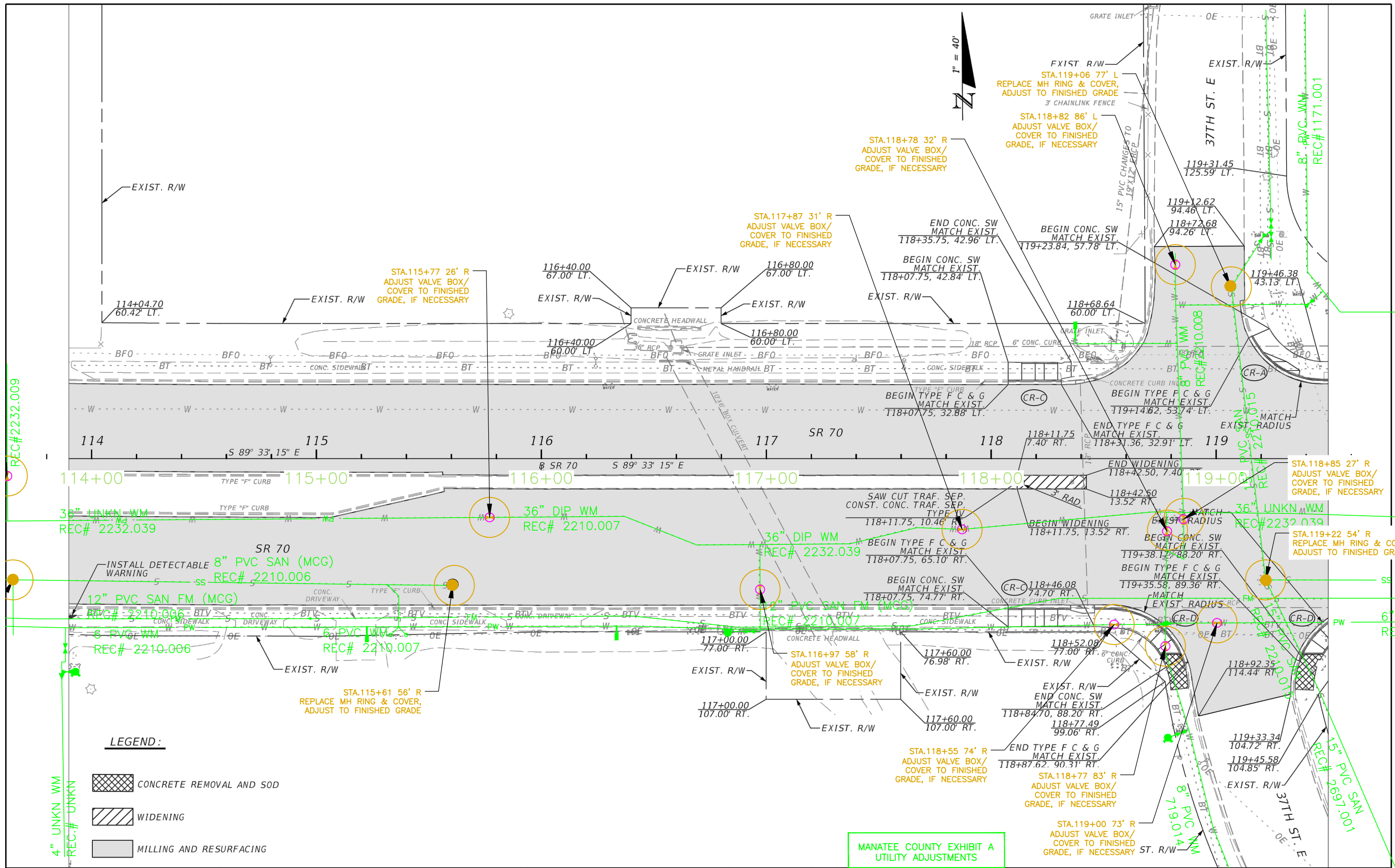
ENGINEER OF RECORD:
 KELLIE F. SPURGEON, P.E.
 P.E. LICENSE NUMBER 66484
 FLORIDA DEPARTMENT OF TRANSPORTATION
 801 N. BROADWAY AVENUE
 BARTOW, FL 33830-3809

STATE OF FLORIDA DEPARTMENT OF TRANSPORTATION		
ROAD NO.	COUNTY	FINANCIAL PROJECT ID
70	MANATEE	431207-1-52-01

ROADWAY PLAN

SHEET NO.
35

NOTICE: THE OFFICIAL RECORD OF THIS SHEET IS THE ELECTRONIC FILE STORED AND SEALED UNDER RULE 61G15-23.003, F.A.C.



LEGEND:

	CONCRETE REMOVAL AND SOD
	WIDENING
	MILLING AND RESURFACING

MANATEE COUNTY EXHIBIT A
UTILITY ADJUSTMENTS

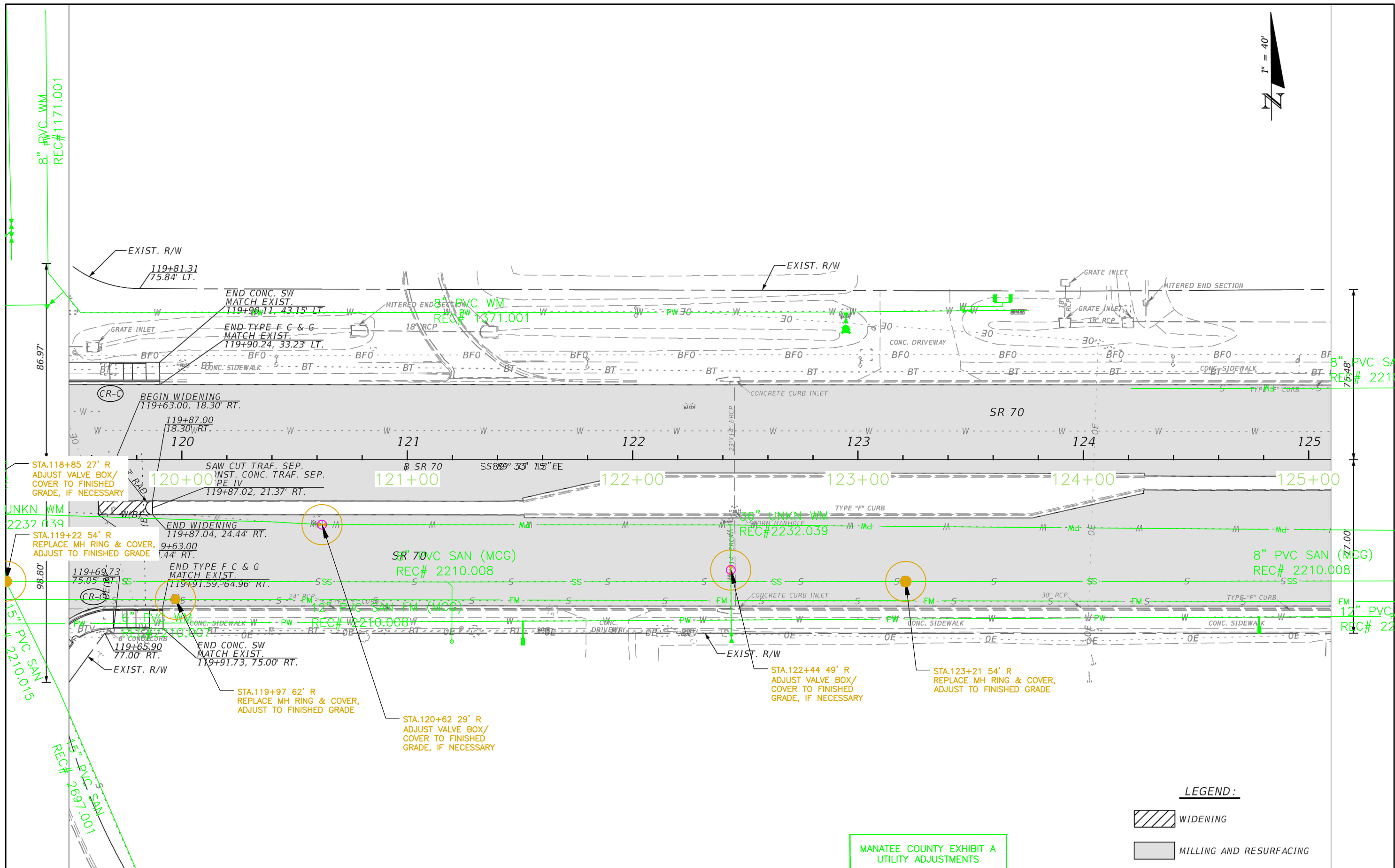
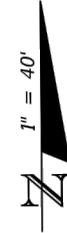
REVISIONS		REVISIONS	
DATE	DESCRIPTION	DATE	DESCRIPTION

ENGINEER OF RECORD:
KELLIE F. SPURGEON, P.E.
P.E. LICENSE NUMBER 66484
FLORIDA DEPARTMENT OF TRANSPORTATION
801 N. BROADWAY AVENUE
BARTOW, FL 33830-3809

STATE OF FLORIDA DEPARTMENT OF TRANSPORTATION		
ROAD NO.	COUNTY	FINANCIAL PROJECT ID
70	MANATEE	431207-1-52-01

ROADWAY PLAN		SHEET NO. 36
---------------------	--	--------------------

NOTICE: THE OFFICIAL RECORD OF THIS SHEET IS THE ELECTRONIC FILED AND SEALED UNDER RULE 61G15-23.003, F.A.C.



STA.118+85 27' R
ADJUST VALVE BOX/
COVER TO FINISHED
GRADE, IF NECESSARY

STA.119+22 54' R
REPLACE MH RING & COVER,
ADJUST TO FINISHED GRADE

STA.119+97 62' R
REPLACE MH RING & COVER,
ADJUST TO FINISHED GRADE

STA.120+62 29' R
ADJUST VALVE BOX/
COVER TO FINISHED
GRADE, IF NECESSARY

STA.122+44 49' R
ADJUST VALVE BOX/
COVER TO FINISHED
GRADE, IF NECESSARY

STA.123+21 54' R
REPLACE MH RING & COVER,
ADJUST TO FINISHED GRADE

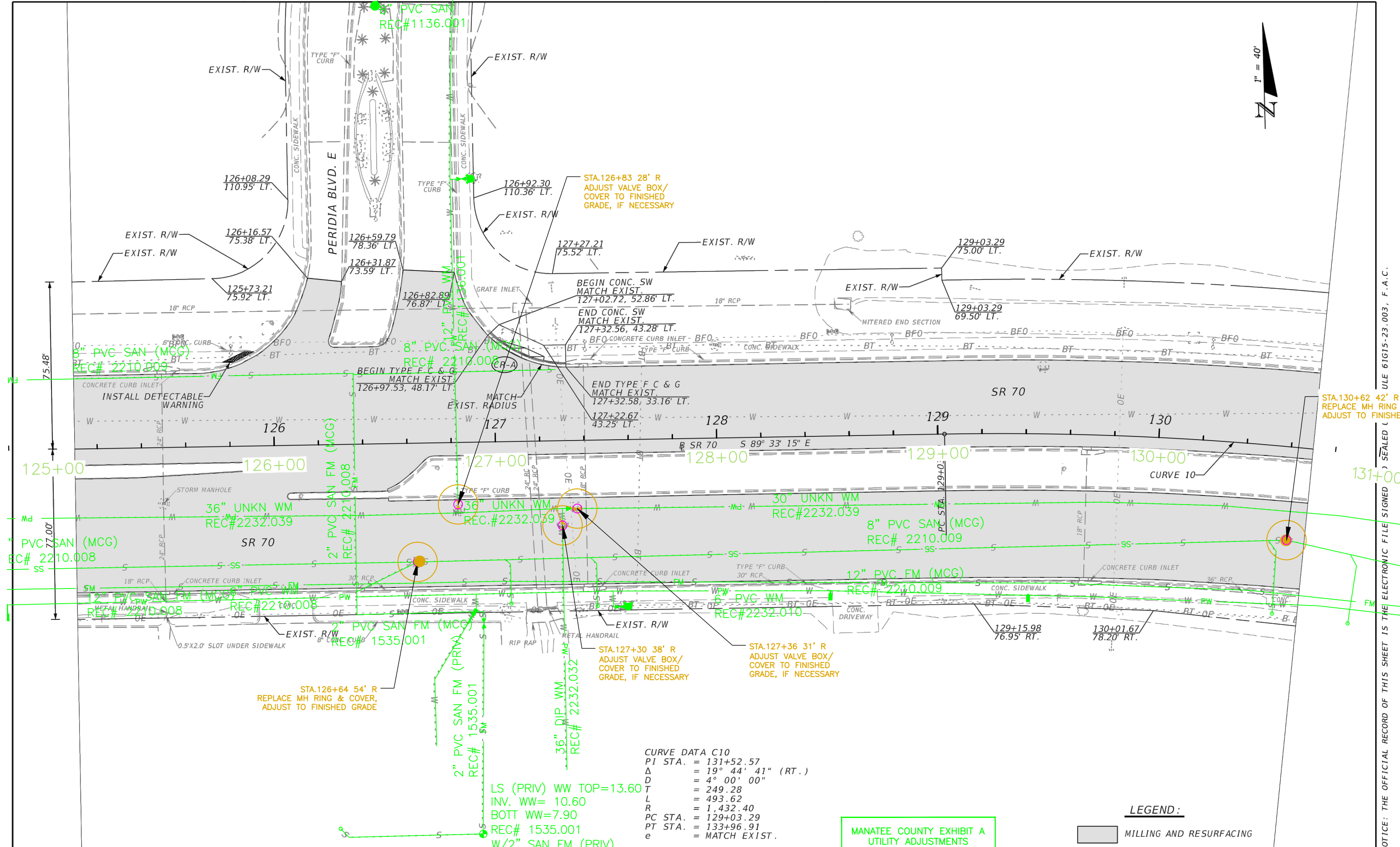
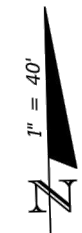
LEGEND:

- WIDENING
- MILLING AND RESURFACING

MANATEE COUNTY EXHIBIT A
UTILITY ADJUSTMENTS

REVISIONS				ENGINEER OF RECORD: KELLIE F. SPURGEON, P.E. P.E. LICENSE NUMBER 66484 FLORIDA DEPARTMENT OF TRANSPORTATION 801 N. BROADWAY AVENUE BARTOW, FL 33830-3809	STATE OF FLORIDA DEPARTMENT OF TRANSPORTATION			ROADWAY PLAN	SHEET NO.
DATE	DESCRIPTION	DATE	DESCRIPTION		ROAD NO.	COUNTY	FINANCIAL PROJECT ID		
					70	MANATEE	431207-1-52-01		37

NOTICE: THE OFFICIAL RECORD OF THIS SHEET IS THE ELECTRONIC FILE SIGNED AND SEALED UNDER RULE 17A-5-23.003, F.A.C.



CURVE DATA C10
 PI STA. = 131+52.57
 Δ = 19° 44' 41" (RT.)
 D = 4° 00' 00"
 T = 249.28
 L = 493.62
 R = 1,432.40
 PC STA. = 129+03.29
 PT STA. = 133+96.91
 e = MATCH EXIST.

LS (PRIV) WW TOP=13.60
 INV. WW= 10.60
 BOTT WW=7.90
 REC# 1535.001
 W/2" SAN FM (PRIV)

MANATEE COUNTY EXHIBIT A
 UTILITY ADJUSTMENTS

LEGEND:
 MILLING AND RESURFACING

REVISIONS			
DATE	DESCRIPTION	DATE	DESCRIPTION

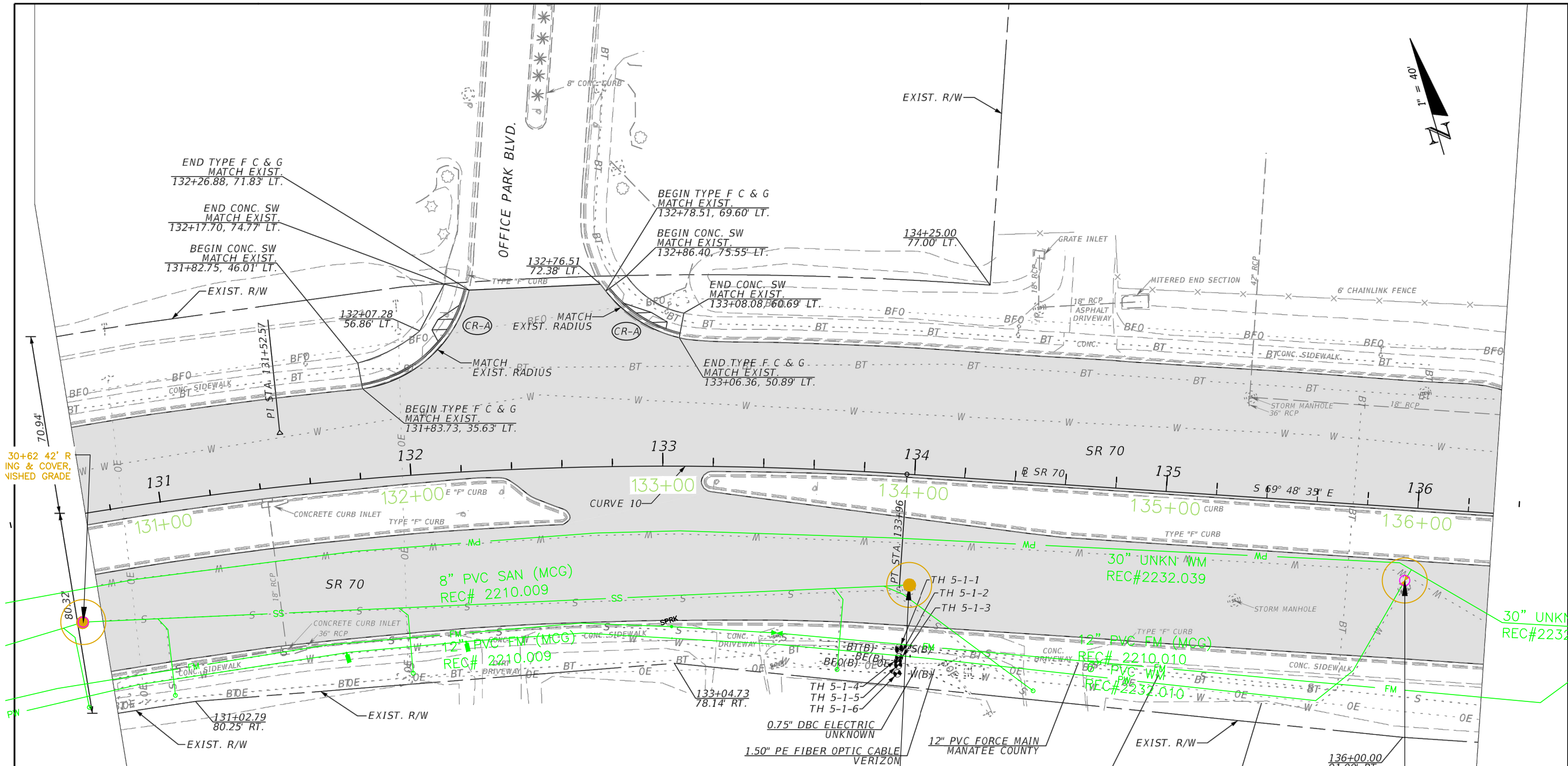
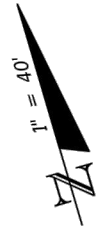
ENGINEER OF RECORD:
 KELLIE F. SPURGEON, P.E.
 P.E. LICENSE NUMBER 66484
 FLORIDA DEPARTMENT OF TRANSPORTATION
 801 N. BROADWAY AVENUE
 BARTOW, FL 33830-3809

STATE OF FLORIDA DEPARTMENT OF TRANSPORTATION		
ROAD NO.	COUNTY	FINANCIAL PROJECT ID
70	MANATEE	431207-1-52-01

ROADWAY PLAN

SHEET NO.
38

NOTICE: THE OFFICIAL RECORD OF THIS SHEET IS THE ELECTRONIC FILE SIGNED & SEALED (FILE 61G15-23.003 - F.A.C.)



30+62 42' R
ING & COVER,
WISHED GRADE

30\"/>

SUE TEST HOLE SUMMARY							
TEST HOLE NO.	STATION	SIDE	OFFSET	GROUND EL.	DEPTH (FT.)	UTILITY EL.	UTILITY REMARKS
TH 5-1-1	133+98.39	RT.	68.98	15.01	4.36	10.65	12" PVC FORCE MAIN
TH 5-1-2	133+98.39	RT.	69.70	14.97	3.76	11.21	4" PVC BURIED TELEPHONE
TH 5-1-3	133+98.62	RT.	72.68		N/A		EXPLORATORY/CLEAR
TH 5-1-4	133+98.24	RT.	74.23	13.83	3.16	10.67	0.75" DBC ELECTRIC
TH 5-1-5	133+98.44	RT.	75.76	13.43	2.50	10.93	1.50" PE FIBER OPTIC CABLE
TH 5-1-6	133+98.32	RT.	79.06	12.63	4.26	8.37	6" PVC WATER MAIN

STA.134+00 46' R
REPLACE MH RING & COVER,
ADJUST TO FINISHED GRADE

STA.135+97 32' R
ADJUST VALVE BOX/
COVER TO FINISHED
GRADE, IF NECESSARY

CURVE DATA C10
PI STA. = 131+52.57
 Δ = 19° 44' 41" (RT.)
D = 4° 00' 00"
T = 249.28
L = 493.62
R = 1,432.40
PC STA. = 129+03.29
PT STA. = 133+96.91
e = MATCH EXIST.

MANATEE COUNTY EXHIBIT A
UTILITY ADJUSTMENTS

LEGEND:
MILLING AND RESURFACING

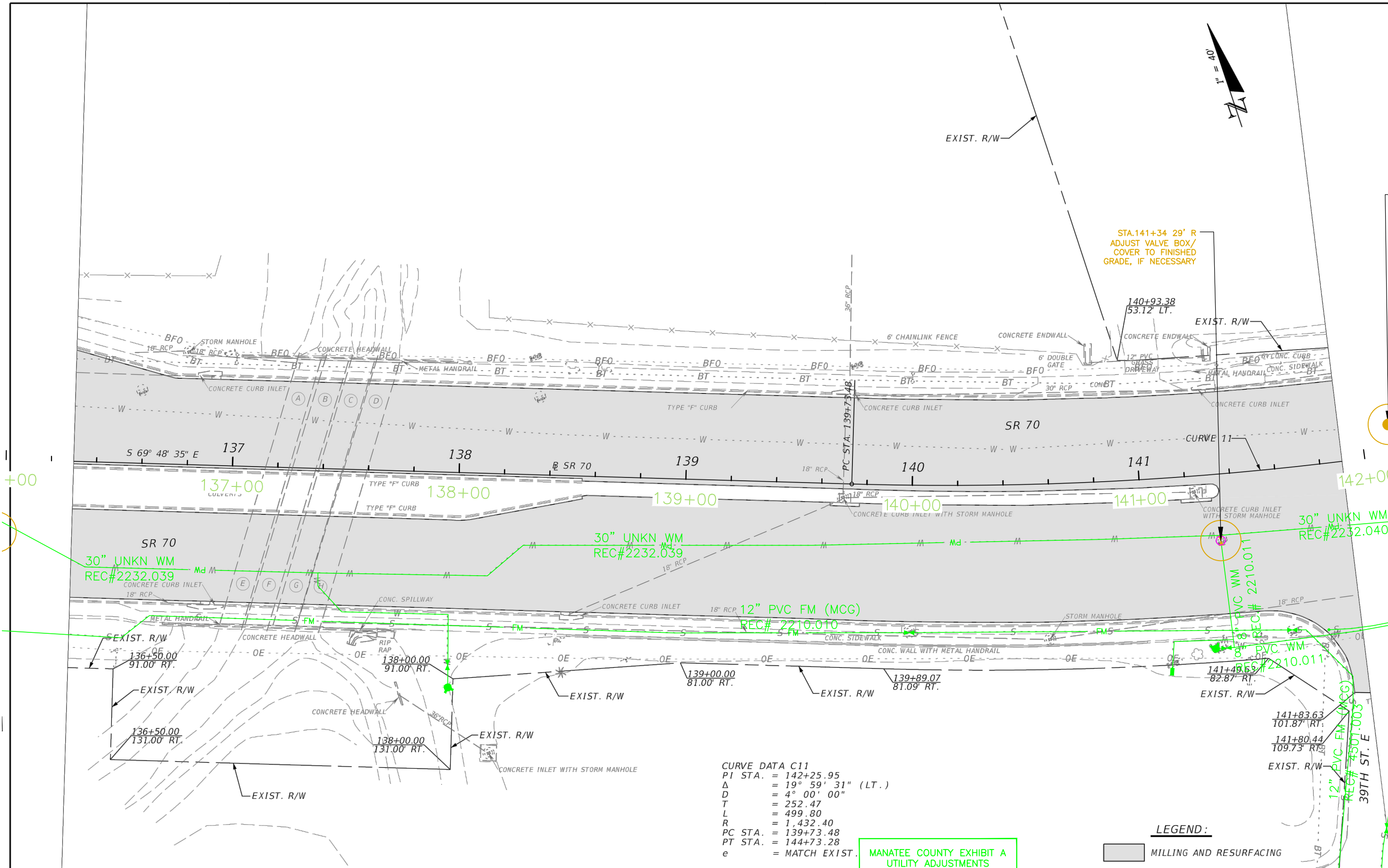
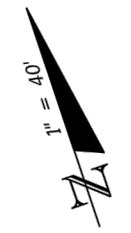
REVISIONS			
DATE	DESCRIPTION	DATE	DESCRIPTION

ENGINEER OF RECORD:
KELLIE F. SPURGEON, P.E.
P.E. LICENSE NUMBER 66484
FLORIDA DEPARTMENT OF TRANSPORTATION
801 N. BROADWAY AVENUE
BARTOW, FL 33830-3809

STATE OF FLORIDA DEPARTMENT OF TRANSPORTATION		
ROAD NO.	COUNTY	FINANCIAL PROJECT ID
70	MANATEE	431207-1-52-01

ROADWAY PLAN		SHEET NO.
		39

NOTICE: THE OFFICIAL RECORD OF THIS SHEET IS THE ELECTRONIC FILE SIGNED AND SEALED UNDER RULE 61G15-23.003, F.A.C.



CURVE DATA C11
 PI STA. = 142+25.95
 Δ = 19° 59' 31" (LT.)
 D = 4° 00' 00"
 T = 252.47
 L = 499.80
 R = 1,432.40
 PC STA. = 139+73.48
 PT STA. = 144+73.28
 e = MATCH EXIST.

MANATEE COUNTY EXHIBIT A
UTILITY ADJUSTMENTS

LEGEND:
 MILLING AND RESURFACING

REVISIONS			
DATE	DESCRIPTION	DATE	DESCRIPTION

ENGINEER OF RECORD:
 KELLIE F. SPURGEON, P.E.
 P.E. LICENSE NUMBER 66484
 FLORIDA DEPARTMENT OF TRANSPORTATION
 801 N. BROADWAY AVENUE
 BARTOW, FL 33830-3809

STATE OF FLORIDA DEPARTMENT OF TRANSPORTATION		
ROAD NO.	COUNTY	FINANCIAL PROJECT ID
70	MANATEE	431207-1-52-01

ROADWAY PLAN

SHEET
NO.

40

NOTICE: THE OFFICIAL RECORD DRAWING SHEET IS THE ELECTRONIC FILE SIGNED AND SEALED UNDER RULE 61G15-23.003, F.A.C.



STA.141+34 29' R
ADJUST VALVE BOX/
COVER TO FINISHED
GRADE, IF NECESSARY

STA.142+12 14' L
REPLACE MH RING & COVER,
ADJUST TO FINISHED GRADE

STA.144+87 13' L
REPLACE MH RING & COVER,
ADJUST TO FINISHED GRADE

STA.146+81 12' L
REPLACE MH RING & COVER,
ADJUST TO FINISHED GRADE

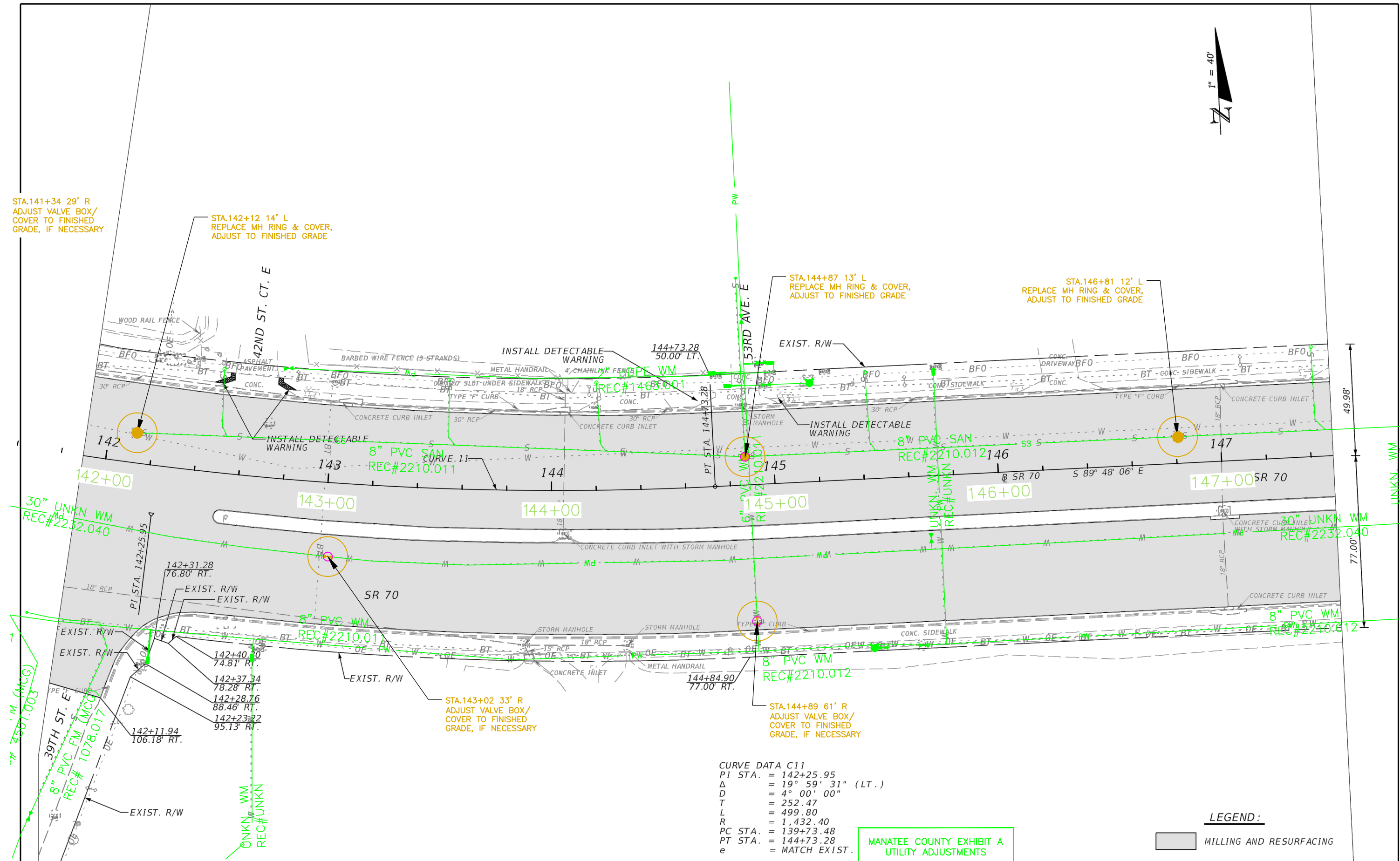
STA.143+02 33' R
ADJUST VALVE BOX/
COVER TO FINISHED
GRADE, IF NECESSARY

STA.144+89 61' R
ADJUST VALVE BOX/
COVER TO FINISHED
GRADE, IF NECESSARY

CURVE DATA C11
 PI STA. = 142+25.95
 Δ = 19° 59' 31" (LT.)
 D = 4° 00' 00"
 T = 252.47
 L = 499.80
 R = 1,432.40
 PC STA. = 139+73.48
 PT STA. = 144+73.28
 e = MATCH EXIST.

MANATEE COUNTY EXHIBIT A
UTILITY ADJUSTMENTS

LEGEND:
 MILLING AND RESURFACING



REVISIONS			
DATE	DESCRIPTION	DATE	DESCRIPTION

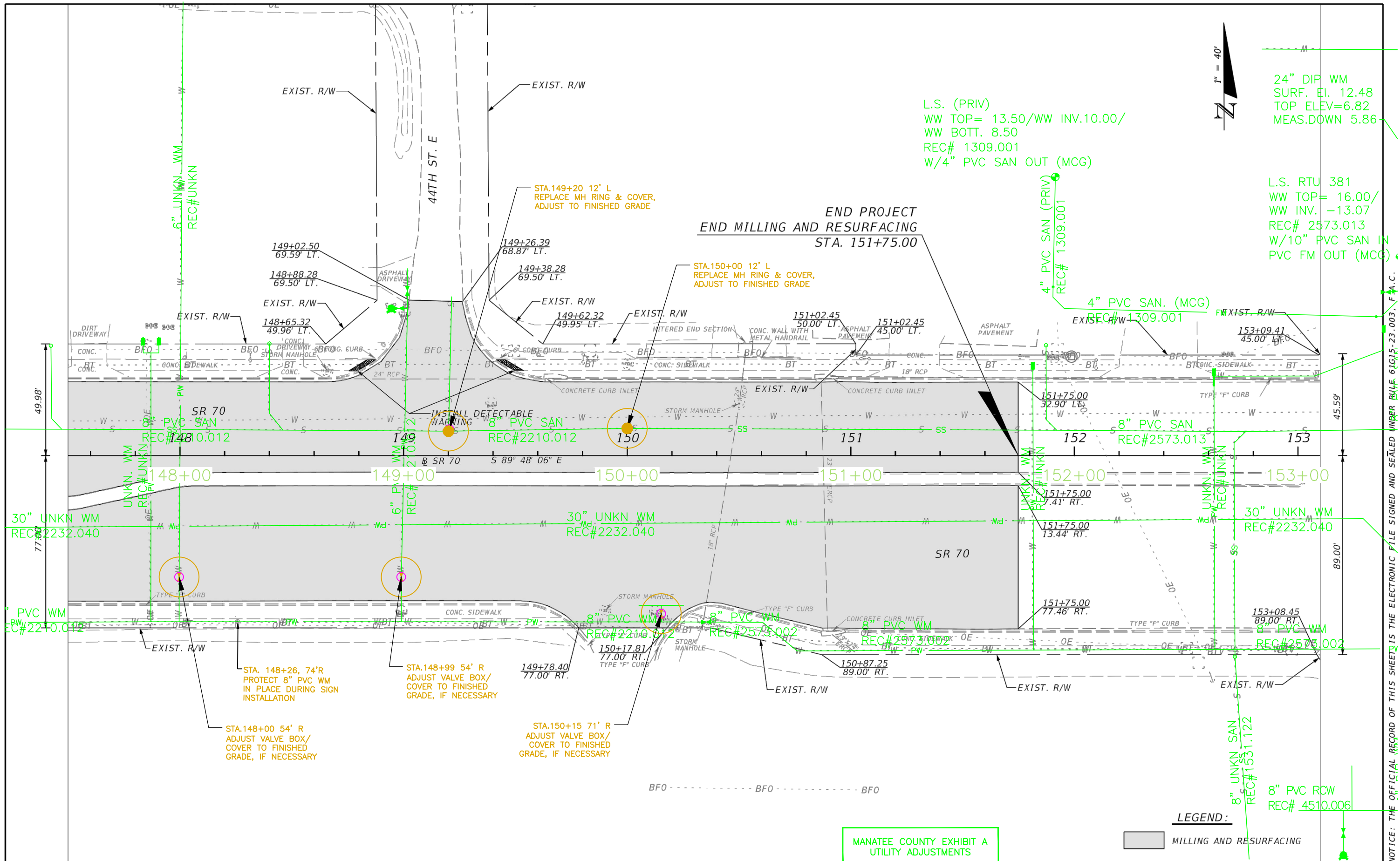
ENGINEER OF RECORD:
 KELLIE F. SPURGEON, P.E.
 P.E. LICENSE NUMBER 66484
 FLORIDA DEPARTMENT OF TRANSPORTATION
 801 N. BROADWAY AVENUE
 BARTOW, FL 33830-3809

STATE OF FLORIDA DEPARTMENT OF TRANSPORTATION		
ROAD NO.	COUNTY	FINANCIAL PROJECT ID
70	MANATEE	431207-1-52-01

ROADWAY PLAN

SHEET NO.
41

NOTICE: THE OFFICIAL RECORD OF THIS SHEET IS THE ELECTRONIC FILE SIGNED AND SEALED UNDER RULE 61G13-23.003, F.A.C.



24" DIP WM
SURF. EI. 12.48
TOP ELEV=6.82
MEAS.DOWN 5.86

L.S. (PRIV)
WW TOP= 13.50/WW INV.10.00/
WW BOT. 8.50
REC# 1309.001
W/4" PVC SAN OUT (MCG)

L.S. RTU 381
WW TOP= 16.00/
WW INV. -13.07
REC# 2573.013
W/10" PVC SAN IN
PVC FM OUT (MCG)

END PROJECT
END MILLING AND RESURFACING
STA. 151+75.00

4" PVC SAN (PRIV)
REC# 1309.001

4" PVC SAN. (MCG)
REC# 1309.001

8" PVC SAN
REC#2573.013

30" UNKN WM
REC#2232.040

8" PVC SAN
REC#2210.012

8" PVC SAN
REC#14810.012

UNKN. WM
REC#UNKN

UNKN. WM
REC#UNKN

8" UNKN SAN
REC#1531.122

8" PVC RCW
REC# 4510.006

STA. 148+26, 74'R
PROTECT 8" PVC WM
IN PLACE DURING SIGN
INSTALLATION

STA.148+99 54' R
ADJUST VALVE BOX/
COVER TO FINISHED
GRADE, IF NECESSARY

STA.148+00 54' R
ADJUST VALVE BOX/
COVER TO FINISHED
GRADE, IF NECESSARY

STA.150+15 71' R
ADJUST VALVE BOX/
COVER TO FINISHED
GRADE, IF NECESSARY

MANATEE COUNTY EXHIBIT A
UTILITY ADJUSTMENTS

LEGEND:

MILLING AND RESURFACING

REVISIONS			
DATE	DESCRIPTION	DATE	DESCRIPTION

ENGINEER OF RECORD:
KELLIE F. SPURGEON, P.E.
P.E. LICENSE NUMBER 66484
FLORIDA DEPARTMENT OF TRANSPORTATION
801 N. BROADWAY AVENUE
BARTOW, FL 33830-3809

STATE OF FLORIDA DEPARTMENT OF TRANSPORTATION		
ROAD NO.	COUNTY	FINANCIAL PROJECT ID
70	MANATEE	431207-1-52-01

ROADWAY PLAN		SHEET NO. 42
---------------------	--	--------------------

NOTICE: THE OFFICIAL RECORD OF THIS SHEET IS THE ELECTRONIC FILE SIGNED AND SEALED UNDER BUREAU 64915-23-003, F.A.C.

STATE OF FLORIDA
DEPARTMENT OF TRANSPORTATION

CONTRACT PLANS

FINANCIAL PROJECT ID 431207-1-52-01

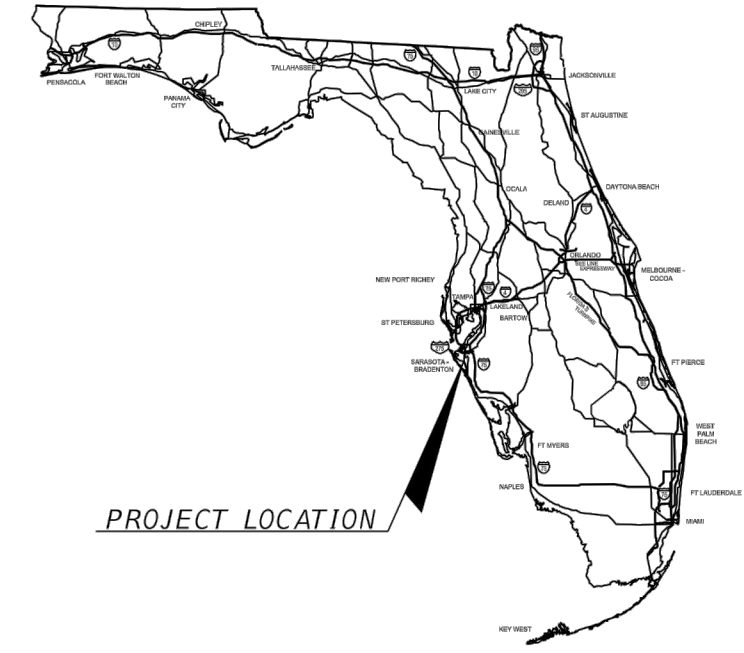
MANATEE COUNTY (13160)

STATE ROAD NO. 70

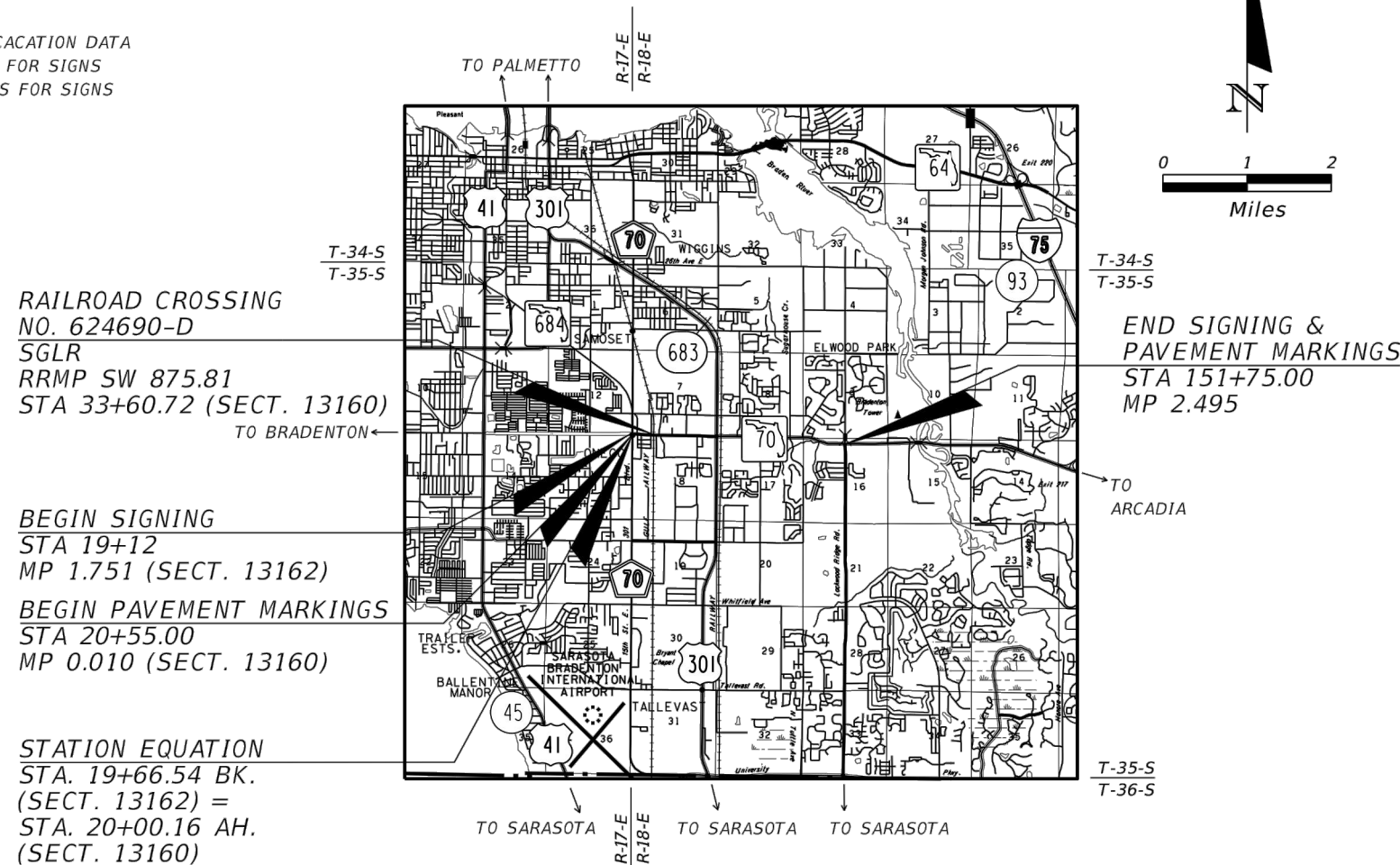
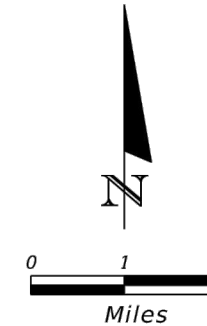
SIGNING & PAVEMENT MARKING PLANS

INDEX OF SIGNING & PAVEMENT MARKING PLANS

SHEET NO.	SHEET DESCRIPTION
S-1	KEY SHEET
S-2 - S-3	TABULATION OF QUANTITIES
S-4	GENERAL NOTES
S-5 - S-23	PLAN SHEETS
S-24 - S-26	GUIDE SIGN WORKSHEETS
S-27 - S-31	SIGNING CROSS SECTIONS
S-32 - S-34	SUB-SURFACE UTILITY EXCAVATION DATA
S-35	REPORT OF CORE BORINGS FOR SIGNS
S-36	REPORT OF CPT SOUNDINGS FOR SIGNS



PROJECT LOCATION



RAILROAD CROSSING
NO. 624690-D
SGLR
RRMP SW 875.81
STA 33+60.72 (SECT. 13160)
TO BRADENTON ←

BEGIN SIGNING
STA 19+12
MP 1.751 (SECT. 13162)

BEGIN PAVEMENT MARKINGS
STA 20+55.00
MP 0.010 (SECT. 13160)

STATION EQUATION
STA. 19+66.54 BK.
(SECT. 13162) =
STA. 20+00.16 AH.
(SECT. 13160)

END SIGNING &
PAVEMENT MARKINGS
STA 151+75.00
MP 2.495

PLANS PREPARED BY:

FLORIDA DEPARTMENT OF TRANSPORTATION
DISTRICT ONE OFFICE
801 N. BROADWAY AVENUE
BARTOW, FL 33830-3809
(OR)
P.O. BOX 1249
BARTOW, FLORIDA 33831-1249
(863) 519-2300

NOTE: THIS PROJECT TO BE LET TO CONTRACT WITH FINANCIAL PROJECT ID 431373-1-52-01.

NOTE: THE SCALE OF THESE PLANS MAY HAVE CHANGED DUE TO REPRODUCTION.

NOTE: THIS IS A FDOT 3R PROJECT.

KEY SHEET REVISIONS	
DATE	DESCRIPTION

SIGNING & PAVEMENT MARKING PLANS
ENGINEER OF RECORD: RYAN K. SLATER, P.E.

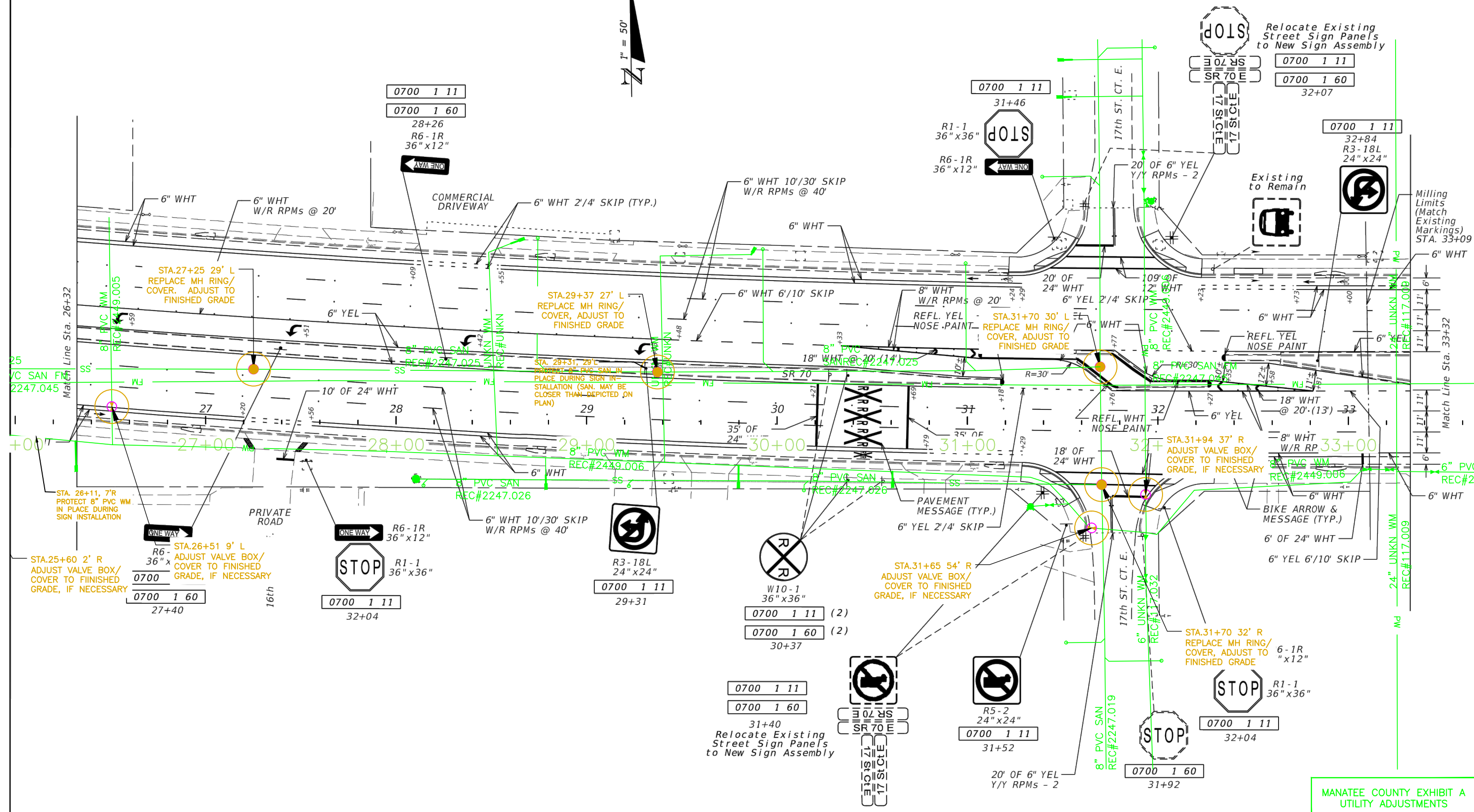
P.E. NO.: 63861

MANATEE COUNTY
UTILITY ADJUSTMENTS CONTRACT
EXHIBIT A - SCOPE OF WORK SHOWN
RED AND BROWN ONLY
MAY 20, 2015 JAMES D. STOCKWELL, PE
FLORIDA PE # 67198

FDOT PROJECT MANAGER: MARY L. McPHERSON

MANATEE COUNTY EXHIBIT A UTILITY ADJUSTMENTS	FISCAL YEAR	SHEET NO.
	15	S-1

NOTICE: THE OFFICIAL RECORD OF THIS SHEET IS THE ELECTRONIC FILE SIGNED AND SEALED UNDER RULE 61G15-23.003, F.A.C.

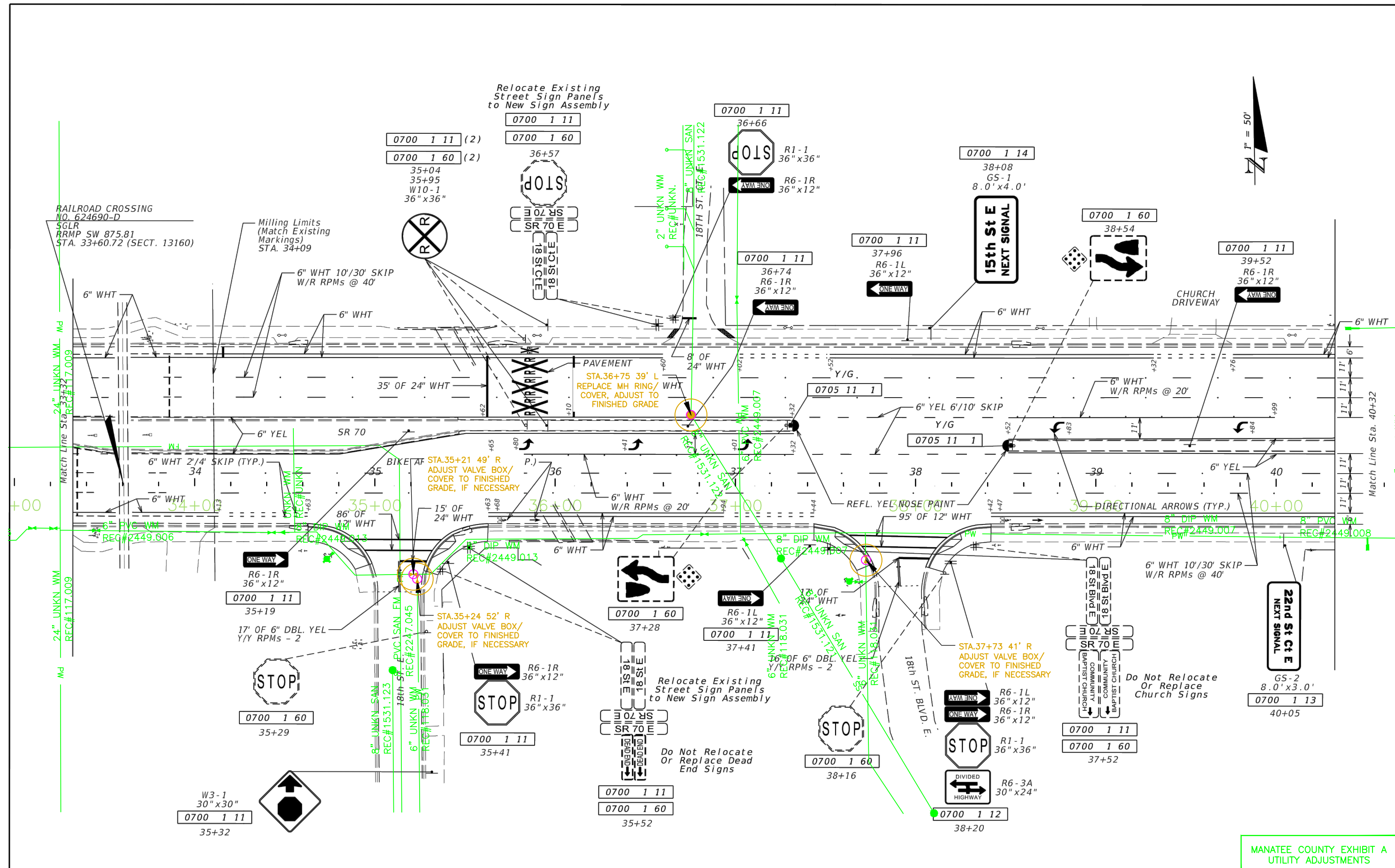
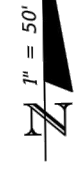


MANATEE COUNTY EXHIBIT A
UTILITY ADJUSTMENTS

REVISIONS				ENGINEER OF RECORD: RYAN KEITH SLATER, P.E. P.E. LICENSE NUMBER 63861 FLORIDA DEPARTMENT OF TRANSPORTATION 801 N. BROADWAY AVENUE BARTOW, FL 33830-3809	STATE OF FLORIDA DEPARTMENT OF TRANSPORTATION			SHEET NO. S-6
DATE	DESCRIPTION	DATE	DESCRIPTION		ROAD NO.	COUNTY	FINANCIAL PROJECT ID	
					70	MANATEE	431207-1-52-01	

PLAN SHEET

NOTICE: THE OFFICIAL RECORD OF THIS SHEET IS THE ELECTRONIC FILE SIGNED AND SEALED UNDER RULE 61G15-23.003, F.A.C.

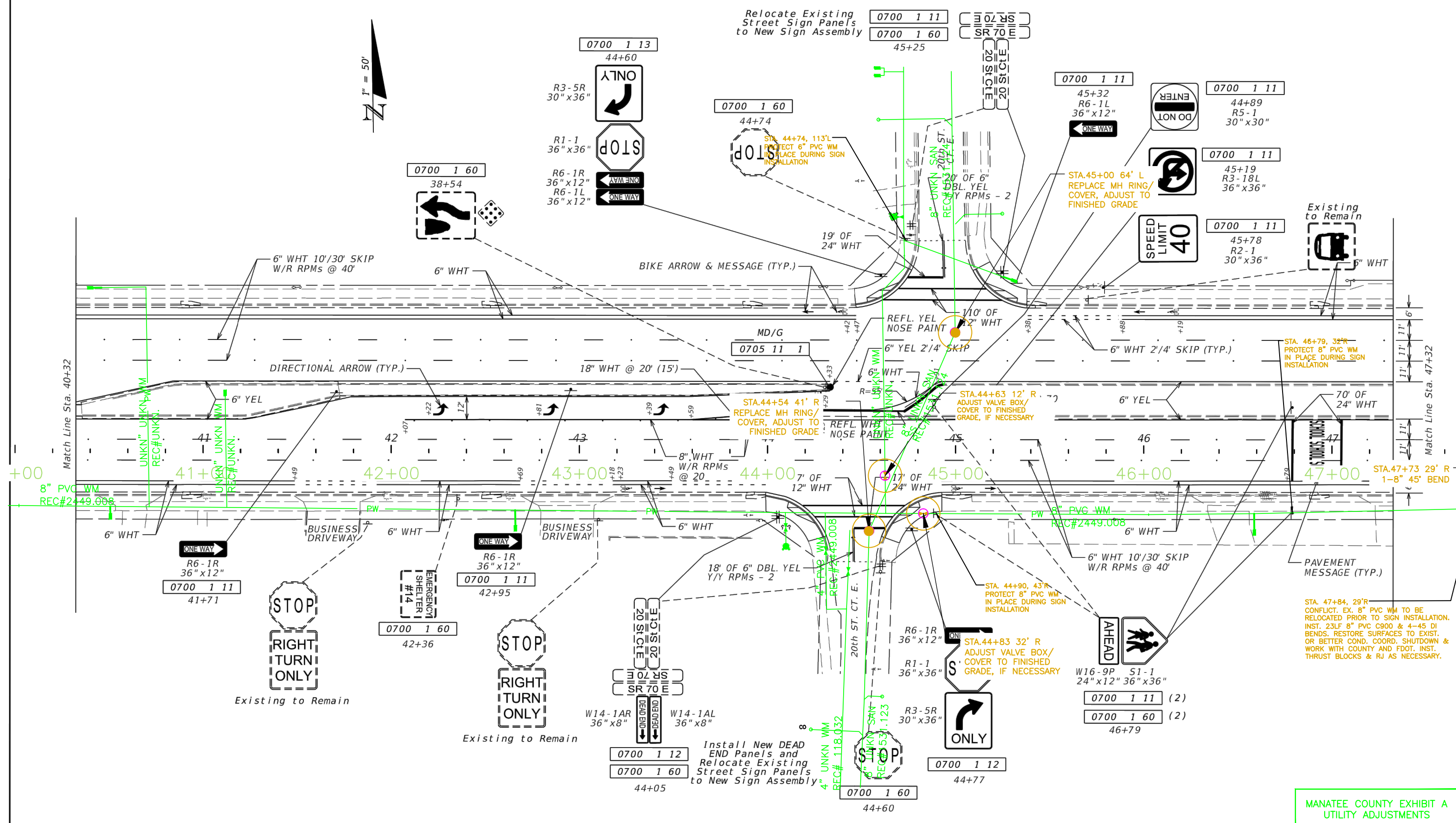
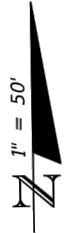


MANATEE COUNTY EXHIBIT A
UTILITY ADJUSTMENTS

REVISIONS				ENGINEER OF RECORD: RYAN KEITH SLATER, P.E. P.E. LICENSE NUMBER 63861 FLORIDA DEPARTMENT OF TRANSPORTATION 801 N. BROADWAY AVENUE BARTOW, FL 33830-3809	STATE OF FLORIDA DEPARTMENT OF TRANSPORTATION			SHEET NO. S-7
DATE	DESCRIPTION	DATE	DESCRIPTION		ROAD NO.	COUNTY	FINANCIAL PROJECT ID	
					70	MANATEE	431207-1-52-01	

PLAN SHEET

NOTICE: THE OFFICIAL RECORD OF THIS SHEET IS THE ELECTRONIC FILE SIGNED AND SEALED UNDER RULE 61G15-23.003, F.A.C.



MANATEE COUNTY EXHIBIT A
UTILITY ADJUSTMENTS

REVISIONS			
DATE	DESCRIPTION	DATE	DESCRIPTION

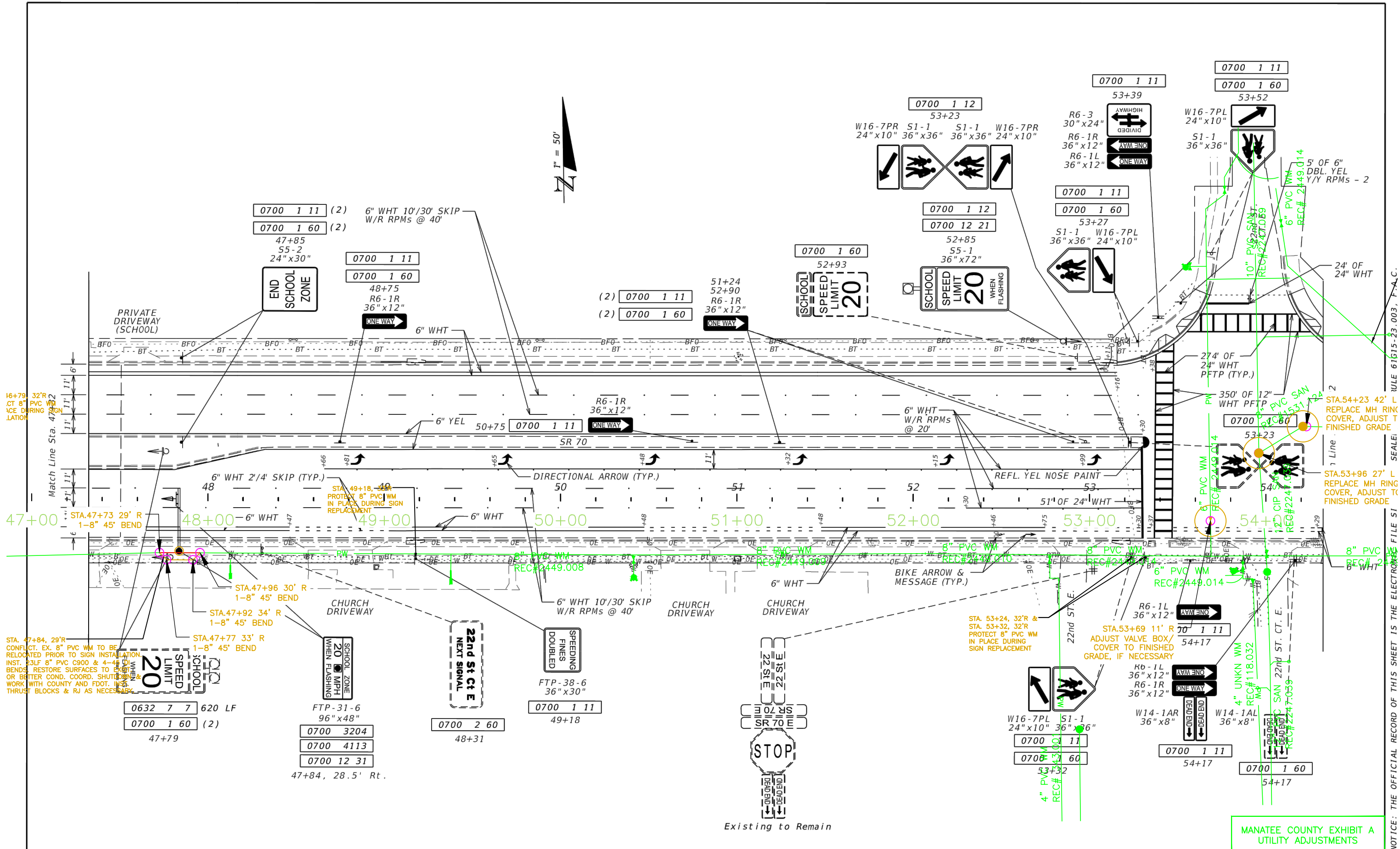
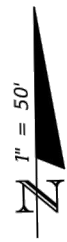
ENGINEER OF RECORD:
RYAN KEITH SLATER, P.E.
P.E. LICENSE NUMBER 63861
FLORIDA DEPARTMENT OF TRANSPORTATION
801 N. BROADWAY AVENUE
BARTOW, FL 33830-3809

STATE OF FLORIDA DEPARTMENT OF TRANSPORTATION		
ROAD NO.	COUNTY	FINANCIAL PROJECT ID
70	MANATEE	431207-1-52-01

PLAN SHEET

SHEET NO.
S-8

NOTICE: THE OFFICIAL RECORD OF THIS SHEET IS THE ELECTRONIC FILE SIGNED AND SEALED UNDER RULE 61G15-23.003, F.A.C.



16+79 32'R
CT 8" PVC WM
IN PLACE DURING
SIGN REPLACEMENT

STA. 47+84, 29'R
CONFLICT. EX. 8" PVC WM TO BE
RELOCATED PRIOR TO SIGN INSTALLATION.
INST. 23LF 8" PVC C900 & 4-45' DIA
BENDS. RESTORE SURFACES TO EXISTING
OR BETTER COND. COORD. SHUTTERS &
WORK WITH COUNTY AND FDOT. INST.
THRUST BLOCKS & RJ AS NECESSARY.

STA. 49+18 - 49
PROTECT 8" PVC WM
IN PLACE DURING SIGN
REPLACEMENT

STA. 53+24, 32'R &
STA. 53+32, 32'R
PROTECT 8" PVC WM
IN PLACE DURING
SIGN REPLACEMENT

STA. 53+69 11' R
ADJUST VALVE BOX/
COVER TO FINISHED
GRADE, IF NECESSARY

STA. 54+23 42' L
REPLACE MH RING
COVER, ADJUST T
FINISHED GRADE

STA. 53+96 27' L
REPLACE MH RING
COVER, ADJUST T
FINISHED GRADE

MANATEE COUNTY EXHIBIT A
UTILITY ADJUSTMENTS

NOTICE: THE OFFICIAL RECORD OF THIS SHEET IS THE ELECTRONIC FILE IN THE PROJECT RECORD SYSTEM. SEE THE PROJECT RECORD SYSTEM FOR THE OFFICIAL RECORD OF THIS SHEET. FILE IN THE PROJECT RECORD SYSTEM.

REVISIONS		REVISIONS		ENGINEER OF RECORD: RYAN KEITH SLATER, P.E. P.E. LICENSE NUMBER 63861 FLORIDA DEPARTMENT OF TRANSPORTATION 801 N. BROADWAY AVENUE BARTOW, FL 33830-3809	STATE OF FLORIDA DEPARTMENT OF TRANSPORTATION			SHEET NO. S-9
DATE	DESCRIPTION	DATE	DESCRIPTION		ROAD NO.	COUNTY	FINANCIAL PROJECT ID	
					70	MANATEE	431207-1-52-01	