

COMPONENTS OF CONTRACT PLANS SET

ROADWAY PLANS
SIGNING AND PAVEMENT MARKING PLANS
SIGNALIZATION PLANS

A DETAILED INDEX APPEARS ON THE
KEY SHEET OF EACH COMPONENT

INDEX OF ROADWAY PLANS

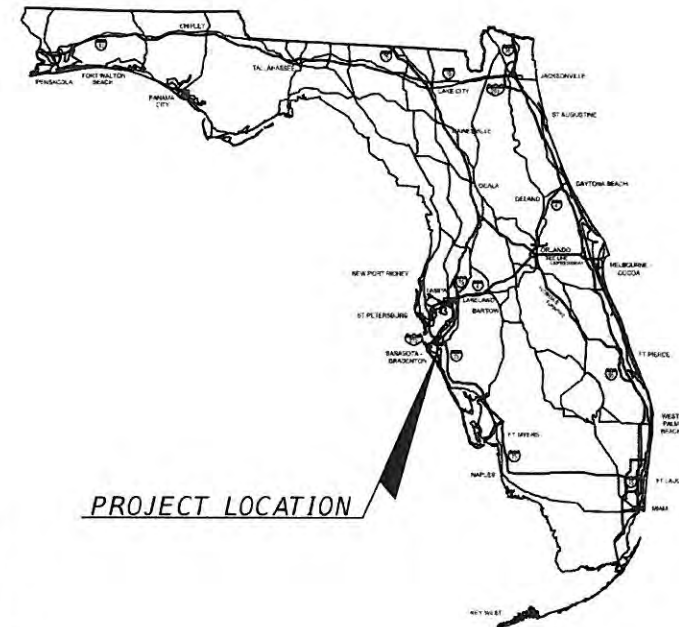
SHEET NO.	SHEET DESCRIPTION
1	KEY SHEET
2	SIGNATURE SHEET
3	TYPICAL SECTION
4	TYPICAL SECTION DETAILS
5Q-1 - 5Q-23	SUMMARY OF QUANTITIES
5	SUMMARY OF DRAINAGE STRUCTURES
6-12	BENCHMARKS
13-17	REFERENCE POINTS
18	PROJECT NOTES
19-42	ROADWAY PLAN
43	DRAINAGE STRUCTURES
44	TEMPORARY TRAFFIC CONTROL PLANS

**STATE OF FLORIDA
DEPARTMENT OF TRANSPORTATION**

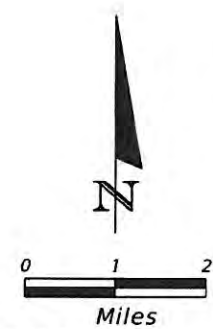
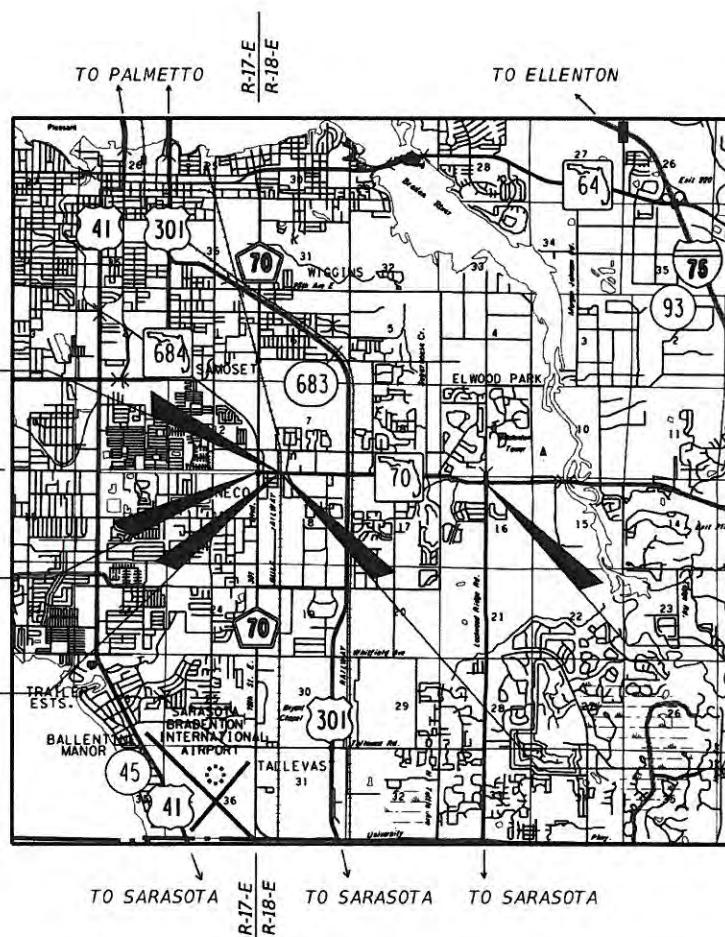
CONTRACT PLANS

FINANCIAL PROJECT ID 431207-1-52-01
MANATEE COUNTY (13160)

STATE ROAD NO. 70



PROJECT LOCATION



RAILROAD CROSSING
NO. 624690-D
SGLR
RRMP SW 875.81
STA 33+60.72

BEGIN PROJECT
STA 20+80.00
MP 0.015

BEGIN EXCEPTION
STA 33+10.72

END PROJECT
STA 151+75.00
MP 2.495

END EXCEPTION
STA 34+10.72

GOVERNING STANDARDS AND SPECIFICATIONS:

FLORIDA DEPARTMENT OF TRANSPORTATION, 2015
DESIGN STANDARDS AND REVISED INDEX DRAWINGS AS
APPENDED HEREIN, AND JAN. 2015 STANDARD
SPECIFICATIONS FOR ROAD AND BRIDGE CONSTRUCTION,
AS AMENDED BY CONTRACT DOCUMENTS.

FOR DESIGN STANDARDS CLICK ON THE "DESIGN STANDARDS"
LINK AT THE FOLLOWING WEB SITE:
<http://www.dot.state.fl.us/rddesign/>

FOR THE STANDARD SPECIFICATIONS FOR ROAD AND BRIDGE
CONSTRUCTION CLICK ON THE "SPECIFICATIONS" LINK AT
THE FOLLOWING WEB SITE:
<http://www.dot.state.fl.us/specificationsoffice/>

**ROADWAY SHOP DRAWINGS
TO BE SUBMITTED TO:**

ANDRA G. DIGGS II, P.E.
FLORIDA DEPARTMENT OF TRANSPORTATION
DISTRICT ONE OFFICE
801 N. BROADWAY AVENUE
BARTOW, FL 33830-3809

PLANS PREPARED BY:

FLORIDA DEPARTMENT OF TRANSPORTATION
DISTRICT ONE OFFICE
801 N. BROADWAY AVENUE
BARTOW, FL 33830-3809
(863) 519-2300

NOTE: THIS PROJECT TO BE LET TO CONTRACT
WITH FINANCIAL PROJECT ID 431373-1-52-01.

NOTE: THE SCALE OF THESE PLANS MAY
HAVE CHANGED DUE TO REPRODUCTION.

NOTE: THIS IS A FDOT 3R PROJECT.

PHASE IIR REVIEW
4/3/15

LENGTH OF PROJECT		
	LINEAR FEET	MILES
ROADWAY	13,095.00	2.480
BRIDGES	0.00	0.000
NET LENGTH OF PROJECT	13,095.00	2.480
EXCEPTIONS	0.00	0.000
GROSS LENGTH OF PROJECT	13,095.00	2.480

KEY SHEET REVISIONS	
DATE	DESCRIPTION

ROADWAY PLANS
ENGINEER OF RECORD: KELLIE F. SPURGEON, P.E.

P.E. NO.: 66484

FISCAL YEAR	SHEET NO.
15	1

MANATEE COUNTY EXHIBIT A
UTILITY ADJUSTMENTS



MANATEE COUNTY EXHIBIT A
UTILITY ADJUSTMENTS CONTRACT
EXHIBIT A - SCOPE OF WORK SHOWS
RED AND BROWN STATE OF
FLORIDA
JULY 1, 2015
FLORIDA PROFESSIONAL ENGINEER

FDOT PROJECT MANAGER: KELLIE F. SPURGEON, P.E.

NOTICE: THE OFFICIAL RECORD OF THIS SHEET IS THE ELECTRONIC FILE SIGNED AND SEALED UNDER RULE 61G15-23.003, F.A.C.

GENERAL

- 1. ALL CONSTRUCTION ACTIVITIES SHALL BE COORDINATED WITH THE PROJECT MANAGEMENT DIVISION. THE PROJECT MANAGER IS: MICHAEL STURM AND CAN BE REACHED AT (941) 708-7450; EXT. 7332
2. SITE VISITS ARE MANDATORY FOR ALL BIDDERS. THESE SITE VISITS CAN BE ARRANGED THROUGH THE PROJECT MANAGER.
3. ALL CONSTRUCTION ON THIS PROJECT SHALL BE IN ACCORDANCE WITH THE LATEST EDITION OF MANATEE COUNTY UTILITY AND TRANSPORTATION STANDARDS AND/OR FDOT "STANDARD SPECIFICATIONS FOR ROAD AND BRIDGE CONSTRUCTION" UNLESS OTHERWISE INDICATED ON THE PLANS.

SAFETY

- 14. THE CONTRACTOR SHALL BE RESPONSIBLE FOR COMPLIANCE WITH THE FLORIDA TRENCH SAFETY ACT, 90-96, LAWS OF FLORIDA EFFECTIVE OCTOBER 1, 1992 AND THE OCCUPATIONAL SAFETY AND HEALTH ADMINISTRATION EXCAVATION STANDARDS, 29 CFR 1926.850, SUBPART P, AS AMENDED. THE CONTRACTOR SHALL INCLUDE IN THE TOTAL BID PRICE ALL COSTS FOR COMPLIANCE WITH THESE REGULATIONS.
15. THE CONTRACTOR SHALL USE SHEET PILING, SHEETING, BRACING, ETC., AS REQUIRED IN ALL EXCAVATION AREAS AND CONFORM TO ALL OSHA REQUIREMENTS.

ENVIRONMENTAL

- 18. THE CONTRACTOR SHALL PROVIDE AND INSTALL ALL NECESSARY STORM WATER, EROSION, AND SEDIMENTATION CONTROL MEASURES IN ACCORDANCE WITH THE FDEP "FLORIDA STORM WATER, EROSION AND SEDIMENTATION CONTROL INSPECTOR'S MANUAL", IT IS THE RESPONSIBILITY OF THE CONTRACTOR TO CONTROL AND PREVENT EROSION AND TRANSPORT OF SEDIMENT TO SURFACE DRAINS AND TO DITCHES DURING CONSTRUCTION.
19. STOCKPILES SHALL BE PROTECTED AT ALL TIMES BY ON-SITE DRAINAGE CONTROLS WHICH PREVENT EROSION OF THE STOCKPILED MATERIAL. CONTROL OF DUST FROM SUCH STOCKPILES IS REQUIRED, DEPENDING UPON THEIR LOCATION AND THE EXPECTED LENGTH OF TIME THE STOCKPILES WILL BE PRESENT. IN NO CASE SHALL ANY STOCKPILED MATERIAL REMAIN AFTER THIRTY (30) CALENDAR DAYS.

RIGHT-OF-WAY

- 28. ALL CONSTRUCTION ACTIVITIES SHALL BE LIMITED TO WITHIN THE MANATEE COUNTY RIGHT-OF-WAY AND FDOT ROW.
29. THE CONTRACTOR SHALL EMPLOY A LAND SURVEYOR REGISTERED IN THE STATE OF FLORIDA TO REFERENCE AND RESTORE PROPERTY CORNER MONUMENTS, PINS, AND LANDMARKS THAT MAY BE DISTURBED BY CONSTRUCTION AT NO ADDITIONAL COST TO THE OWNER.

UTILITIES

- 35. LOCATIONS, ELEVATIONS AND DIMENSIONS OF EXISTING UTILITIES, STRUCTURES AND OTHER FEATURES ARE SHOWN TO THE BEST INFORMATION AVAILABLE AT THE TIME OF PREPARATION OF THESE PLANS BUT DO NOT PURPORT TO BE ABSOLUTELY CORRECT. THERE MAY BE OTHER IMPROVEMENTS, UTILITIES, ETC. WHICH ARE WITHIN THE PROJECT AREA AND WHICH HAVE NOT BEEN LOCATED OR IDENTIFIED. MAY NOT BE IN THE EXACT LOCATION SHOWN OR RELOCATED SINCE THE PREPARATION OF THESE PLANS. THE CONTRACTOR SHALL VERIFY, PRIOR TO CONSTRUCTION, THE LOCATIONS, ELEVATIONS AND DIMENSIONS OF ALL EXISTING UTILITIES STRUCTURES AND OTHER FEATURES (WHETHER OR NOT SHOWN ON THE PLANS) THAT MAY AFFECT HIS WORK.

BROUGHT TO THE ENGINEER'S ATTENTION FOR RESOLUTION.

- 36. THE CONTRACTOR SHALL PROTECT ALL EXISTING STRUCTURES, WATER AND SEWER LINES, STORM DRAINS, UTILITIES, DRIVEWAYS, SIDEWALKS, SIGNS, MAIL BOXES, FENCES, TREES, LANDSCAPING, AND ANY OTHER IMPROVEMENT OR FACILITY IN THE CONSTRUCTION AREA. THE CONTRACTOR SHALL REPAIR AND/OR REPLACE ANY DAMAGED ITEM DUE TO HIS CONSTRUCTION ACTIVITIES TO EQUAL OR BETTER THAN PRE-CONSTRUCTION CONDITIONS AT NO ADDITIONAL COST TO THE OWNER.
37. THE CONTRACTOR SHALL USE APPROPRIATE TECHNIQUES, AS APPROVED, RECOMMENDED OR OFFERED BY FLORIDA POWER AND LIGHT TO PREVENT UNDERMINING OF POWER POLES DURING CONSTRUCTION. IF HOLDING OF POWER POLES IS RECOMMENDED OR REQUIRED BY THE UTILITY, THE CONTRACTOR SHALL COORDINATE THIS ACTIVITY WITH THE UTILITY AND BEAR ALL RELATED COSTS.

CONSTRUCTION

- 46. THE EXHAUST SYSTEM OF ALL GASOLINE AND DIESEL ENGINES SHALL BE EQUIPPED WITH MUFFLERS THAT MEET THE EQUIPMENT MANUFACTURER'S REQUIREMENTS FOR NOISE SUPPRESSION. THE CONTRACTOR SHALL INSTALL NOISE ABATEMENT Baffles POSITIONED TO BREAK LINE-OF-SITE FROM THE NOISE SOURCE TO AFFECTED RESIDENCES, AS APPROVED BY THE ENGINEER.
47. NO MATERIAL SHALL BE STOCKPILED IN ROADWAYS. ALL DIRT AND DEBRIS SHALL BE REMOVED FROM THE JOB SITE DAILY. ROADS SHALL BE SWEEP DAILY AS PART OF DAILY CLEAN UP.
48. THE CONTRACTOR IS TO CONTROL ALL FUGITIVE DUST ORIGINATING ON THIS PROJECT BY WATERING OR OTHER METHODS AS REQUIRED.

DRAINAGE AND GRADING

- 77. ALL CONSTRUCTION IS TO BE STAKED IN THE FIELD BY OR UNDER THE SUPERVISION OF A FLORIDA REGISTERED LAND SURVEYOR.
78. THE CONTRACTOR IS TO PROVIDE THE ENGINEER OF RECORD WITH REPRODUCIBLE RECORD DRAWINGS SHOWING ALL IMPROVEMENT LOCATIONS AND ELEVATIONS IN ACCORDANCE WITH LATEST MANATEE COUNTY PUBLIC WORKS DEPARTMENT STANDARDS AND SWFWMD STANDARDS. THE CONTRACTOR SHALL PROVIDE FIVE SETS OF PRINTS, SIGNED AND SEALED BY A PROFESSIONAL LAND SURVEYOR, OF THE RECORD DRAWING TO THE ENGINEER OF RECORD. RECORD DRAWINGS SHALL INCLUDE TOP OF BANK AND STORM STRUCTURES AND BE REVIEWED BY THE ENGINEER OF RECORD PRIOR TO ACCEPTANCE AND PAYMENT.
79. TOPOGRAPHIC GROUND ELEVATIONS, LOCATIONS AND DEPTHS OF SEWERS, CONDUITS, PIPES, EXISTING STRUCTURES, PAVEMENT, HAVE BEEN OBTAINED BY RELIABLE SOURCES. THE ACCURACY OF THIS DATA IS NOT GUARANTEED, AND IS FURNISHED SOLELY AS AN ACCOMMODATION TO THE CONTRACTOR. USE OF THIS DATA SHALL BE MADE AT THE CONTRACTOR'S DISCRETION. NO ADDITIONAL COMPENSATION WILL BE GRANTED DUE TO THE CONTRACTOR'S LACK OF KNOWLEDGE OF THE SITE CONDITIONS. PRIOR TO TO BID SUBMISSION, THE CONTRACTOR SHALL CONDUCT ANY ADDITIONAL SURVEYS HE MAY DEEM NECESSARY TO VERIFY THE ACCURACY OF THE INFORMATION PROVIDED.

86. REFER TO FDOT UTILITY PERMIT AND CONTRACT SPECS FOR PROJECT SPECIFIC MOT REQUIREMENTS.
87. REFER TO FDOT INDEX 613, 614 and 616 for MOT DETAILS. ADDITIONAL CUSTOM MOT PLANS MAY BE REQUIRED BY FDOT.



PUBLIC WORKS DEPARTMENT ENGINEERING SERVICES 1022 26th Avenue East, Bradenton, FL 34208

FDOT 431207-1-52-01 S.R. 70 S.R. 70 NOTES & LEGEND

EMERGENCY CONTACTS

Table with 4 columns: Organization Name, Address, Phone/Fax, Email. Includes Manatee County Public Works Dept., Florida Power & Light, Florida Gas Transmission, Peace River Electric Cooperative, Manatee County Health Dept., Southwest Florida Water Management District, Verizon Florida Inc., Denise Hutton, TECO/Peoples Gas Co., Dan Shanahan, Bright House Networks, Tom Wright, Sunshine State One Call of Florida.

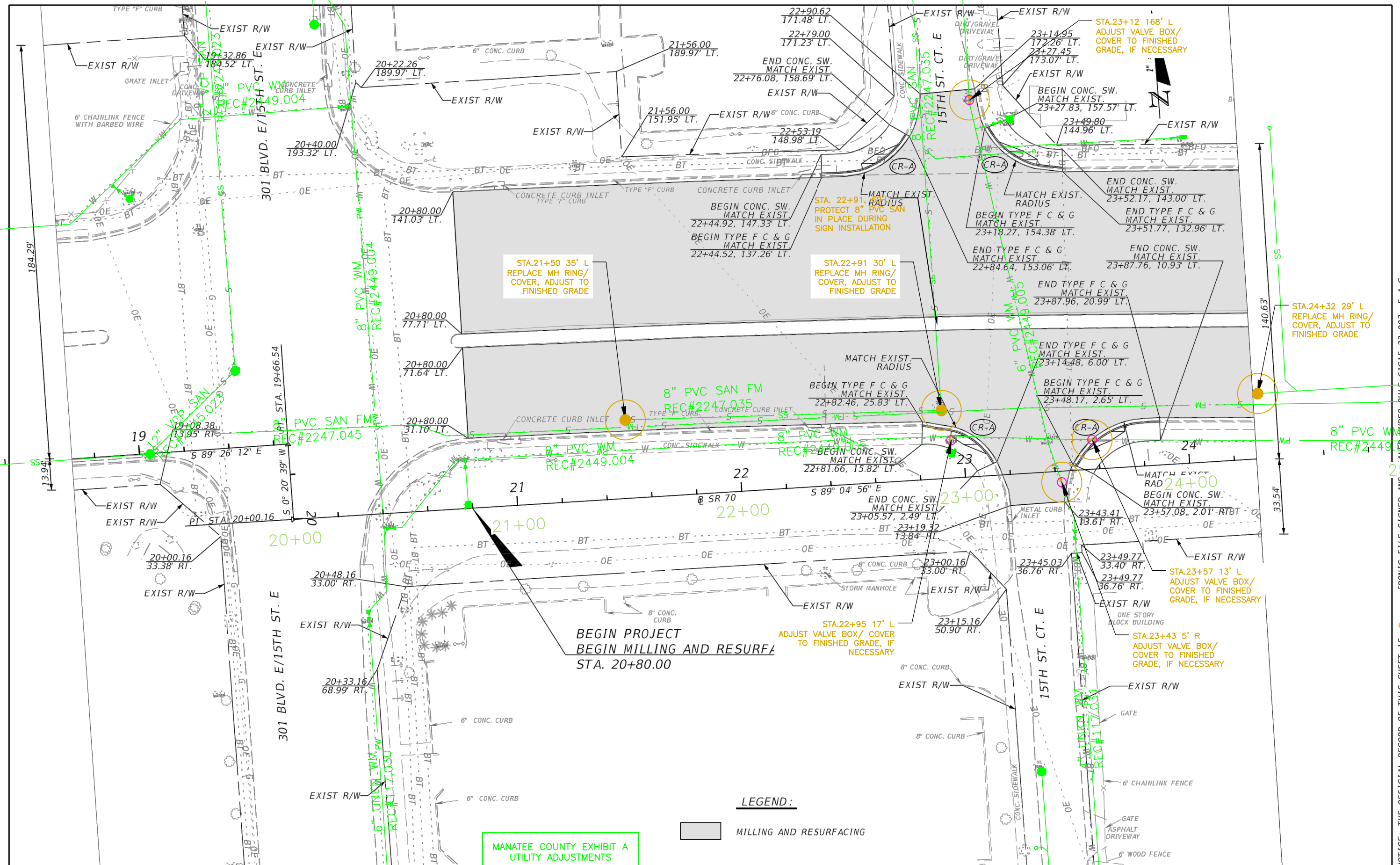
LEGEND

Legend table with columns: Existing, Proposed, Abbreviations. Lists symbols for bench marks, concrete monuments, pipes, manholes, fences, and various utility lines (water, sewer, gas, electric, etc.).

Revision table with columns: No., Date, By, Revision Description. Contains one entry for project # 431207-1-52-01, survey # 14.061, scale NA, surveyed MC 12/2013, designed JKP 06/2014, drawn JKP 08/2014, checked MS 08/2014.

Project information section including Project # (431207-1-52-01), Survey # (14.061), Scale (NA), and a table for Surveyed (MC, 12/2013), Designed (JKP, 06/2014), Drawn (JKP, 08/2014), and Checked (MS, 08/2014). Signed by James D. Stockwell, P.E., Florida P.E. # 67198.

Signature & Date SHEET 1A



MANATEE COUNTY EXHIBIT A
UTILITY ADJUSTMENTS

LEGEND:
 MILLING AND RESURFACING

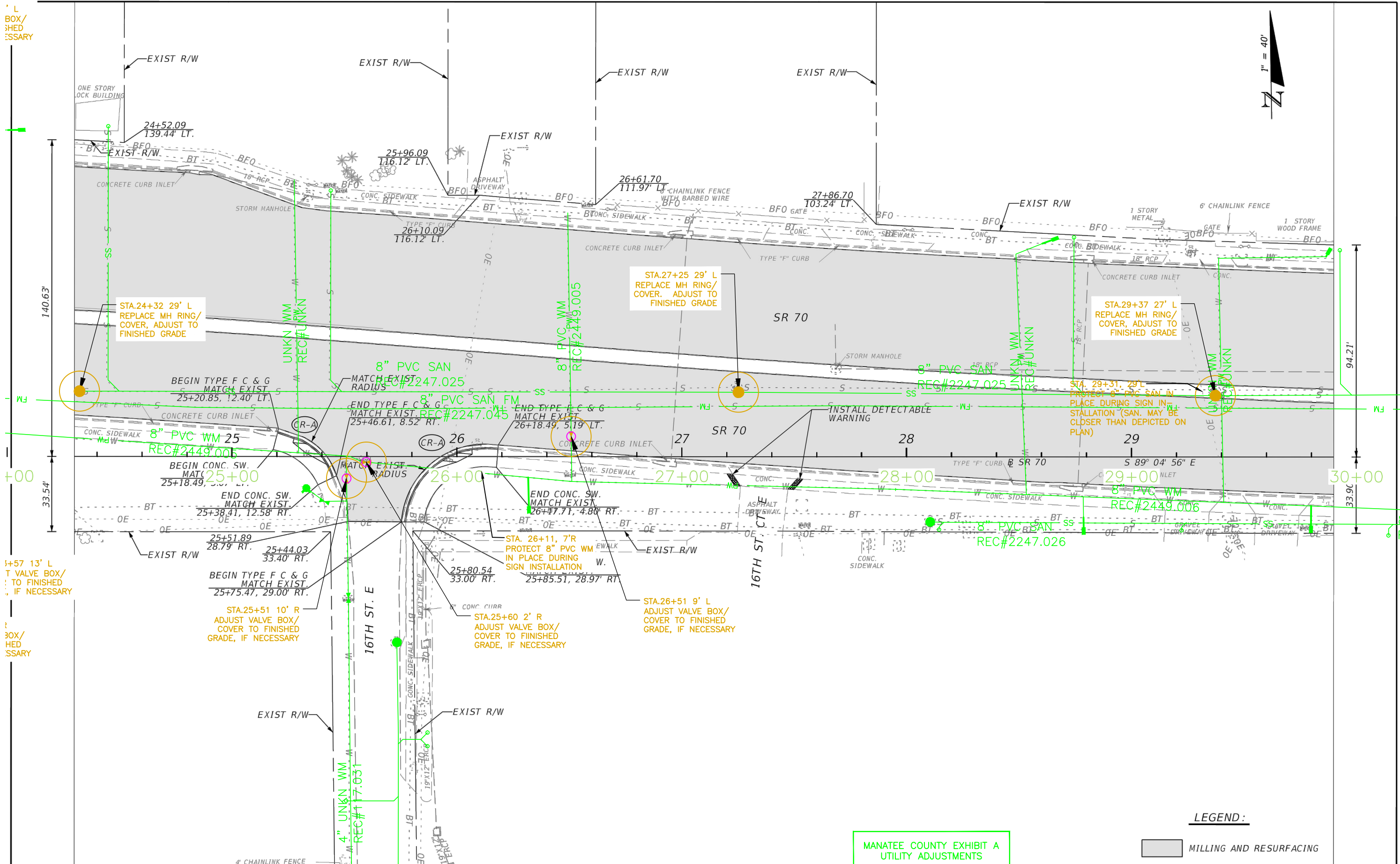
REVISIONS	
DATE	DESCRIPTION

ENGINEER OF RECORD:
 KELLIE F. SPURGEON, P.E.
 P.E. LICENSE NUMBER 66484
 FLORIDA DEPARTMENT OF TRANSPORTATION
 801 N. BROADWAY AVENUE
 BARTOW, FL 33830-3809

STATE OF FLORIDA DEPARTMENT OF TRANSPORTATION		
ROAD NO.	COUNTY	FINANCIAL PROJECT ID
70	MANATEE	431207-1-52-01

ROADWAY PLAN	
DATE	SHEET NO.
4/3/2015	19

NOTICE: THE OFFICIAL RECORD OF THIS SHEET IS THE ELECTRONIC FILE SIGNED AND SEALED UNDER RULE 61G15-23.003, F.A.C.

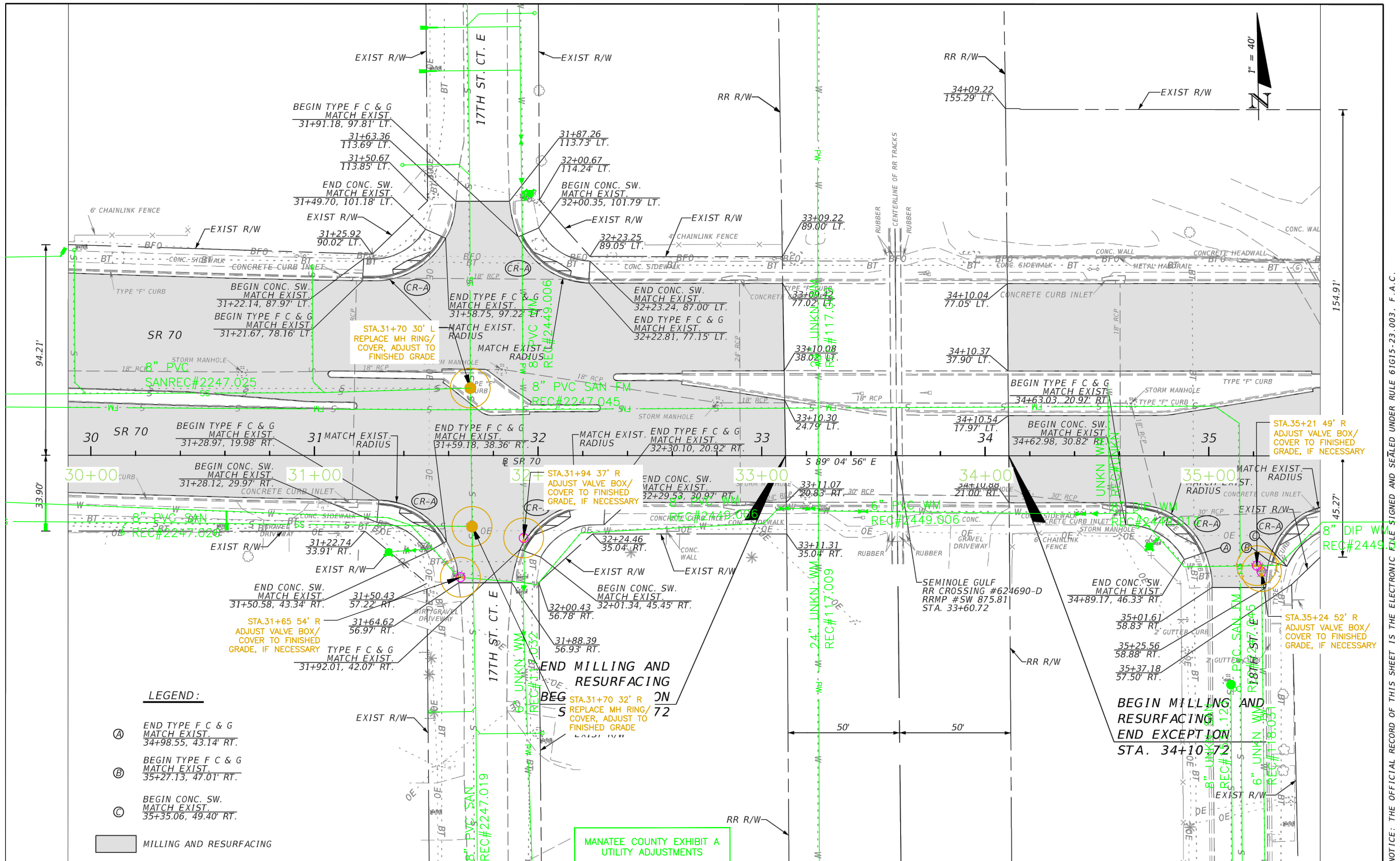


LEGEND:
 MILLING AND RESURFACING
 MANATEE COUNTY EXHIBIT A UTILITY ADJUSTMENTS

DATE		DESCRIPTION		REVISIONS		DESCRIPTION	

ENGINEER OF RECORD: KELLIE F. SPURGEON, P.E. P.E. LICENSE NUMBER 66484 FLORIDA DEPARTMENT OF TRANSPORTATION 801 N. BROADWAY AVENUE BARTOW, FL 33830-3809			STATE OF FLORIDA DEPARTMENT OF TRANSPORTATION			SHEET NO.
ROAD NO.	COUNTY	FINANCIAL PROJECT ID	ROADWAY PLAN			20
70	MANATEE	431207-1-52-01				

NOTICE: THE OFFICIAL RECORD OF THIS SHEET IS THE ELECTRONIC FILE SIGNED AND SEALED UNDER RULE 61G15-23.003, F.A.C.



- LEGEND:**
- Ⓐ END TYPE F C & G MATCH EXIST. 34+98.55, 43.14' RT.
 - Ⓑ BEGIN TYPE F C & G MATCH EXIST. 35+27.13, 47.01' RT.
 - Ⓒ BEGIN CONC. SW. MATCH EXIST. 35+35.06, 49.40' RT.
- MILLING AND RESURFACING

MANATEE COUNTY EXHIBIT A UTILITY ADJUSTMENTS

REVISIONS			
DATE	DESCRIPTION	DATE	DESCRIPTION

ENGINEER OF RECORD:
 KELLIE F. SPURGEON, P.E.
 P.E. LICENSE NUMBER 66484
 FLORIDA DEPARTMENT OF TRANSPORTATION
 801 N. BROADWAY AVENUE
 BARTOW, FL 33830-3809

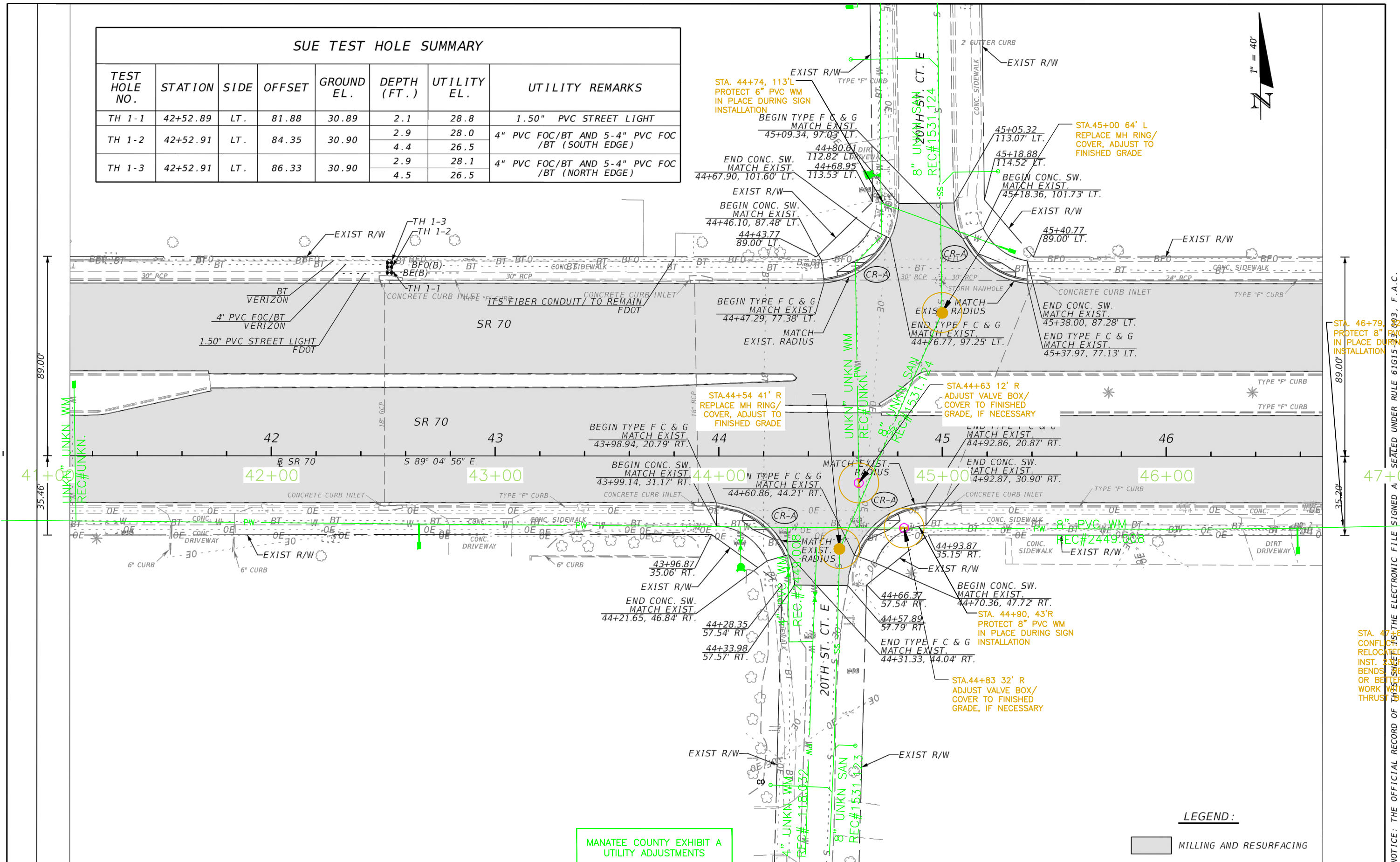
STATE OF FLORIDA DEPARTMENT OF TRANSPORTATION		
ROAD NO.	COUNTY	FINANCIAL PROJECT ID
70	MANATEE	431207-1-52-01

ROADWAY PLAN

SHEET NO.
21

NOTICE: THE OFFICIAL RECORD OF THIS SHEET IS THE ELECTRONIC FILE SIGNED AND SEALED UNDER RULE 61G15-23.003, F.A.C.

SUE TEST HOLE SUMMARY							
TEST HOLE NO.	STATION	SIDE	OFFSET	GROUND EL.	DEPTH (FT.)	UTILITY EL.	UTILITY REMARKS
TH 1-1	42+52.89	LT.	81.88	30.89	2.1	28.8	1.50" PVC STREET LIGHT
TH 1-2	42+52.91	LT.	84.35	30.90	2.9	28.0	4" PVC FOC/BT AND 5-4" PVC FOC /BT (SOUTH EDGE)
					4.4	26.5	
TH 1-3	42+52.91	LT.	86.33	30.90	2.9	28.1	4" PVC FOC/BT AND 5-4" PVC FOC /BT (NORTH EDGE)
					4.5	26.5	



STA. 46+79
PROTECT 8" PVC
IN PLACE DURING
INSTALLATION

STA. 47+8
CONFLICT
RELOCATED
INST. 23
BENDS
OR BETTER
WORK WITH
THRUST

LEGEND:

MILLING AND RESURFACING

REVISIONS			
DATE	DESCRIPTION	DATE	DESCRIPTION

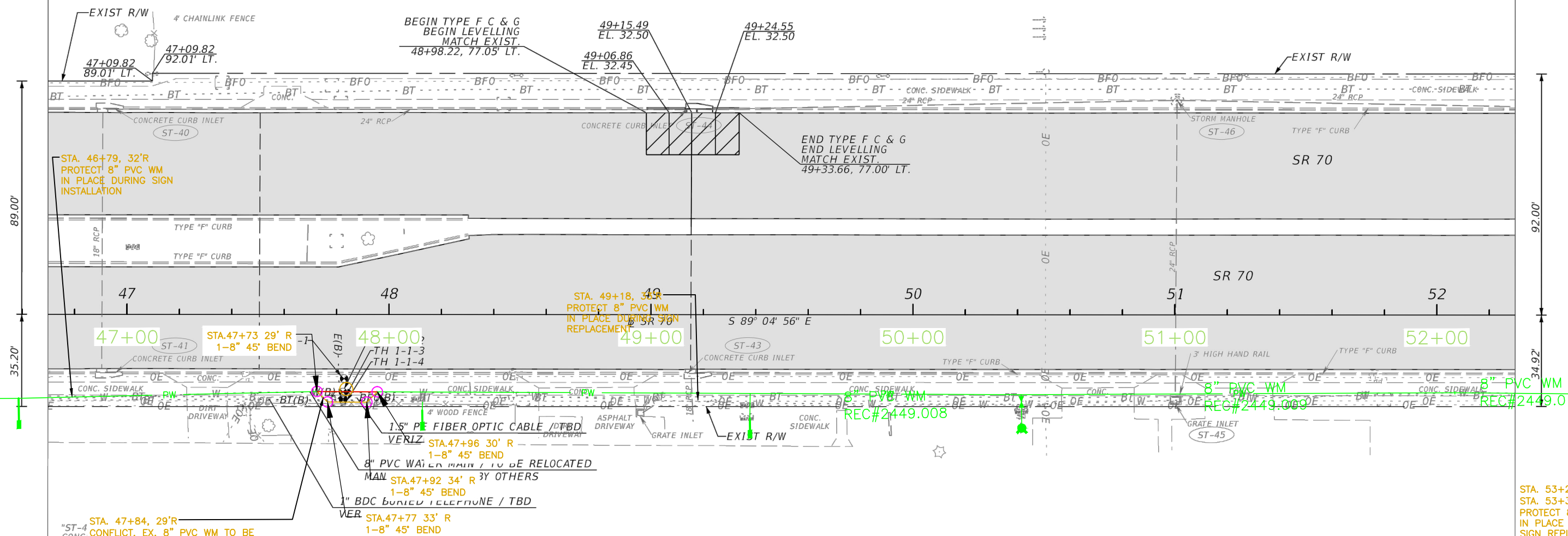
ENGINEER OF RECORD:
KELLIE F. SPURGEON, P.E.
P.E. LICENSE NUMBER 66484
FLORIDA DEPARTMENT OF TRANSPORTATION
801 N. BROADWAY AVENUE
BARTOW, FL 33830-3809

STATE OF FLORIDA DEPARTMENT OF TRANSPORTATION		
ROAD NO.	COUNTY	FINANCIAL PROJECT ID
70	MANATEE	431207-1-52-01

ROADWAY PLAN

SHEET NO. 23

NOTICE: THE OFFICIAL RECORD OF THIS PROJECT IS THE ELECTRONIC FILE SIGNED AND SEALED UNDER RULE 61G15-2.003, F.A.C.



STA. 47+84, 29'R
CONC. GRATE INLET (2)
THROAT ELEVATION=31.42
N INVERT=18" RCP (1)
INVERT ELEVATION=24.38

STA. 47+73 29' R
1-8" 45' BEND
CONC. SIDEWALK
DRIVEWAY

STA. 47+77 33' R
1-8" 45' BEND
VER

STA. 47+96 30' R
1-8" 45' BEND
VERIZ

STA. 47+92 34' R
1-8" 45' BEND
MAN

STA. 47+84, 29'R
CONC. GRATE INLET (2)
THROAT ELEVATION=31.42
N INVERT=18" RCP (1)
INVERT ELEVATION=24.38

STA. 47+73 29' R
1-8" 45' BEND
CONC. SIDEWALK
DRIVEWAY

STA. 47+77 33' R
1-8" 45' BEND
VER

STA. 47+96 30' R
1-8" 45' BEND
VERIZ

STA. 47+92 34' R
1-8" 45' BEND
MAN

STA. 47+84, 29'R
CONC. GRATE INLET (2)
THROAT ELEVATION=31.42
N INVERT=18" RCP (1)
INVERT ELEVATION=24.38

STA. 47+73 29' R
1-8" 45' BEND
CONC. SIDEWALK
DRIVEWAY

STA. 47+77 33' R
1-8" 45' BEND
VER

STA. 47+96 30' R
1-8" 45' BEND
VERIZ

STA. 47+92 34' R
1-8" 45' BEND
MAN

SUE TEST HOLE SUMMARY							
TEST HOLE NO.	STATION	SIDE	OFFSET	GROUND EL.	DEPTH (FT.)	UTILITY EL.	UTILITY REMARKS
TH 1-1-1	47+82.93	RT.	24.48		N/A		EXPLORATORY/CLEAR
TH 1-1-2	47+82.48	RT.	29.60	32.55	3.32	29.23	8" PVC WATER MAIN
TH 1-1-3	47+82.56	RT.	32.08	32.84	2.69	30.15	1.50" PE FIBER OPTIC CABLE
TH 1-1-4	47+82.56	RT.	32.65	32.95	2.20	30.75	1" DBC BURIED TELEPHONE

MANATEE COUNTY EXHIBIT A
UTILITY ADJUSTMENTS

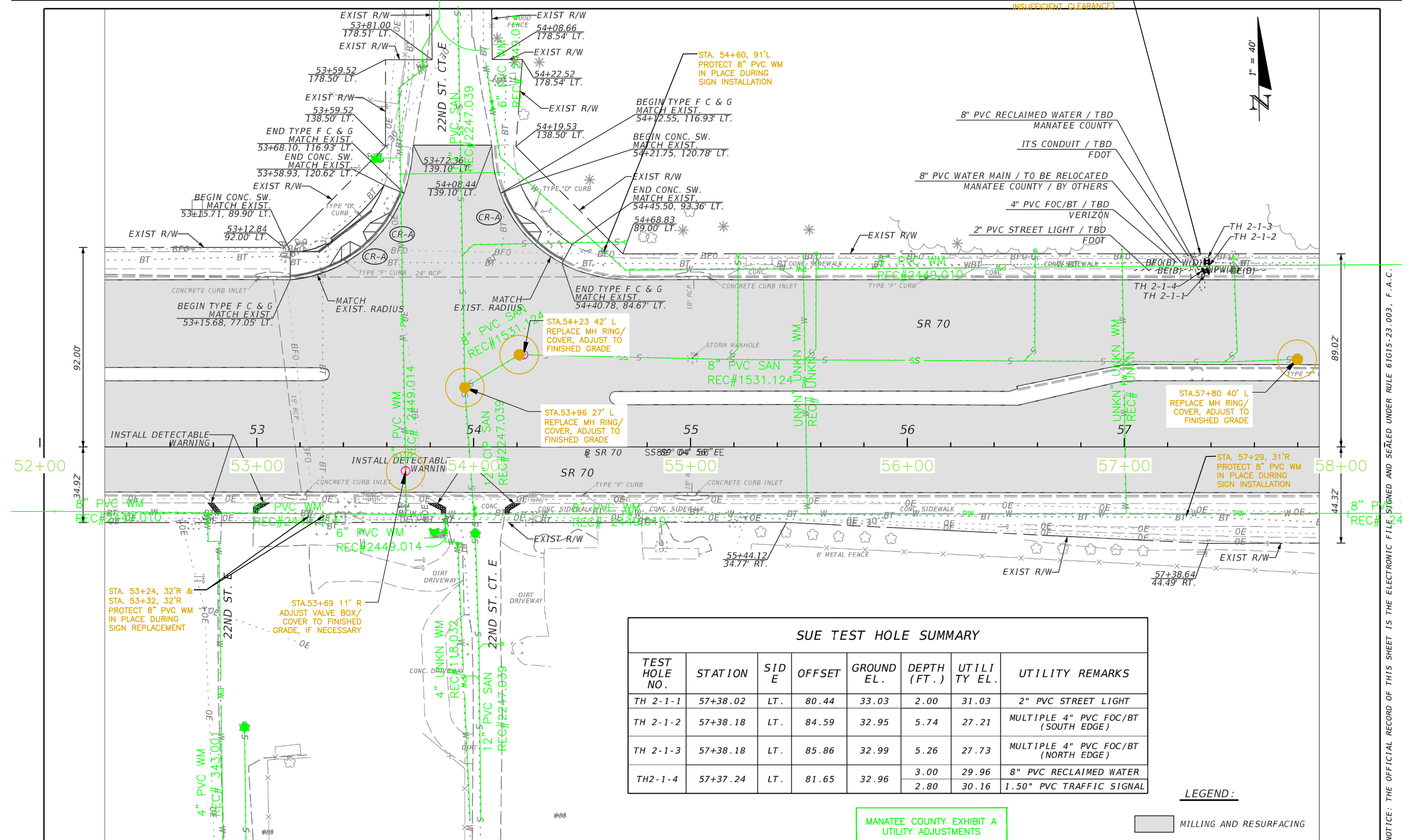
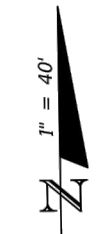
LEGEND:
 LEVELLING
 MILLING AND RESURFACING

STA. 53+24, 5
STA. 53+32, 5
PROTECT 8" PVC
IN PLACE DURING
SIGN REPLACEMENT

NOTICE: THE OFFICIAL RECORD OF THIS SHEET SHALL BE THE ELECTRONIC FILE SIGNED AND SEALED UNDER RULE 61G15-23.003, F.A.C.

REVISIONS				ENGINEER OF RECORD: KELLIE F. SPURGEON, P.E. P.E. LICENSE NUMBER 66484 FLORIDA DEPARTMENT OF TRANSPORTATION 801 N. BROADWAY AVENUE BARTOW, FL 33830-3809	STATE OF FLORIDA DEPARTMENT OF TRANSPORTATION			ROADWAY PLAN	SHEET NO. 24
DATE	DESCRIPTION	DATE	DESCRIPTION		ROAD NO.	COUNTY	FINANCIAL PROJECT ID		
					70	MANATEE	431207-1-52-01		

INSUFFICIENT CLEARANCE



SUE TEST HOLE SUMMARY

TEST HOLE NO.	STATION	SID E	OFFSET	GROUND EL.	DEPTH (FT.)	UTILI TY EL.	UTILITY REMARKS
TH 2-1-1	57+38.02	LT.	80.44	33.03	2.00	31.03	2" PVC STREET LIGHT
TH 2-1-2	57+38.18	LT.	84.59	32.95	5.74	27.21	MULTIPLE 4" PVC FOC/BT (SOUTH EDGE)
TH 2-1-3	57+38.18	LT.	85.86	32.99	5.26	27.73	MULTIPLE 4" PVC FOC/BT (NORTH EDGE)
TH 2-1-4	57+37.24	LT.	81.65	32.96	3.00	29.96	8" PVC RECLAIMED WATER
					2.80	30.16	1.50" PVC TRAFFIC SIGNAL

LEGEND:
 MILLING AND RESURFACING

MANATEE COUNTY EXHIBIT A
UTILITY ADJUSTMENTS

REVISIONS			
DATE	DESCRIPTION	DATE	DESCRIPTION

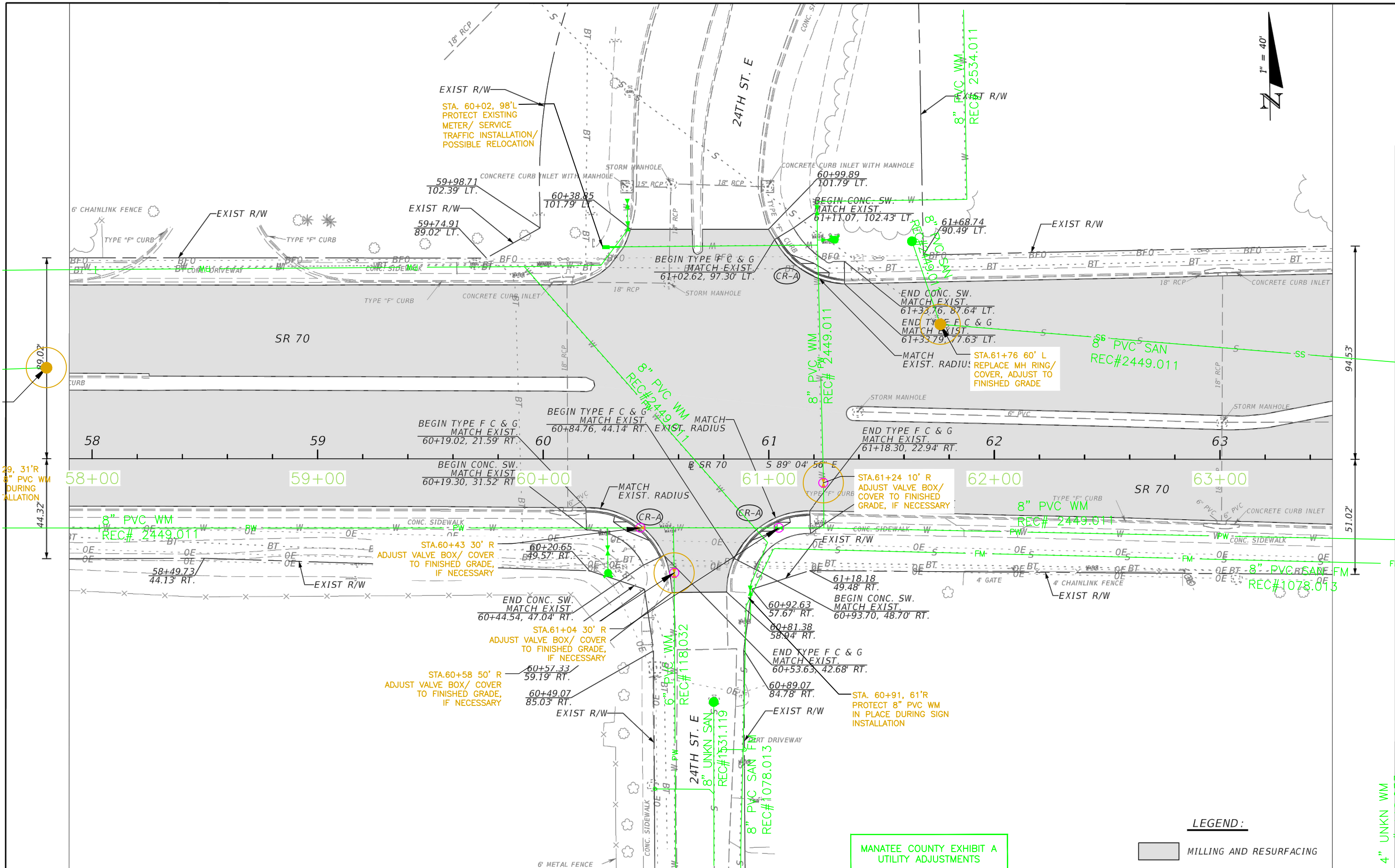
ENGINEER OF RECORD:
 KELLIE F. SPURGEON, P.E.
 P.E. LICENSE NUMBER 66484
 FLORIDA DEPARTMENT OF TRANSPORTATION
 801 N. BROADWAY AVENUE
 BARTOW, FL 33830-3809

STATE OF FLORIDA DEPARTMENT OF TRANSPORTATION		
ROAD NO.	COUNTY	FINANCIAL PROJECT ID
70	MANATEE	431207-1-52-01

ROADWAY PLAN

SHEET NO.
25

NOTICE: THE OFFICIAL RECORD OF THIS SHEET IS THE ELECTRONIC FILE, STORED AND SEALED UNDER RULE 61G15-23.003, F.A.C.



REVISIONS			
DATE	DESCRIPTION	DATE	DESCRIPTION

ENGINEER OF RECORD:
 KELLIE F. SPURGEON, P.E.
 P.E. LICENSE NUMBER 66484
 FLORIDA DEPARTMENT OF TRANSPORTATION
 801 N. BROADWAY AVENUE
 BARTOW, FL 33830-3809

STATE OF FLORIDA DEPARTMENT OF TRANSPORTATION		
ROAD NO.	COUNTY	FINANCIAL PROJECT ID
70	MANATEE	431207-1-52-01

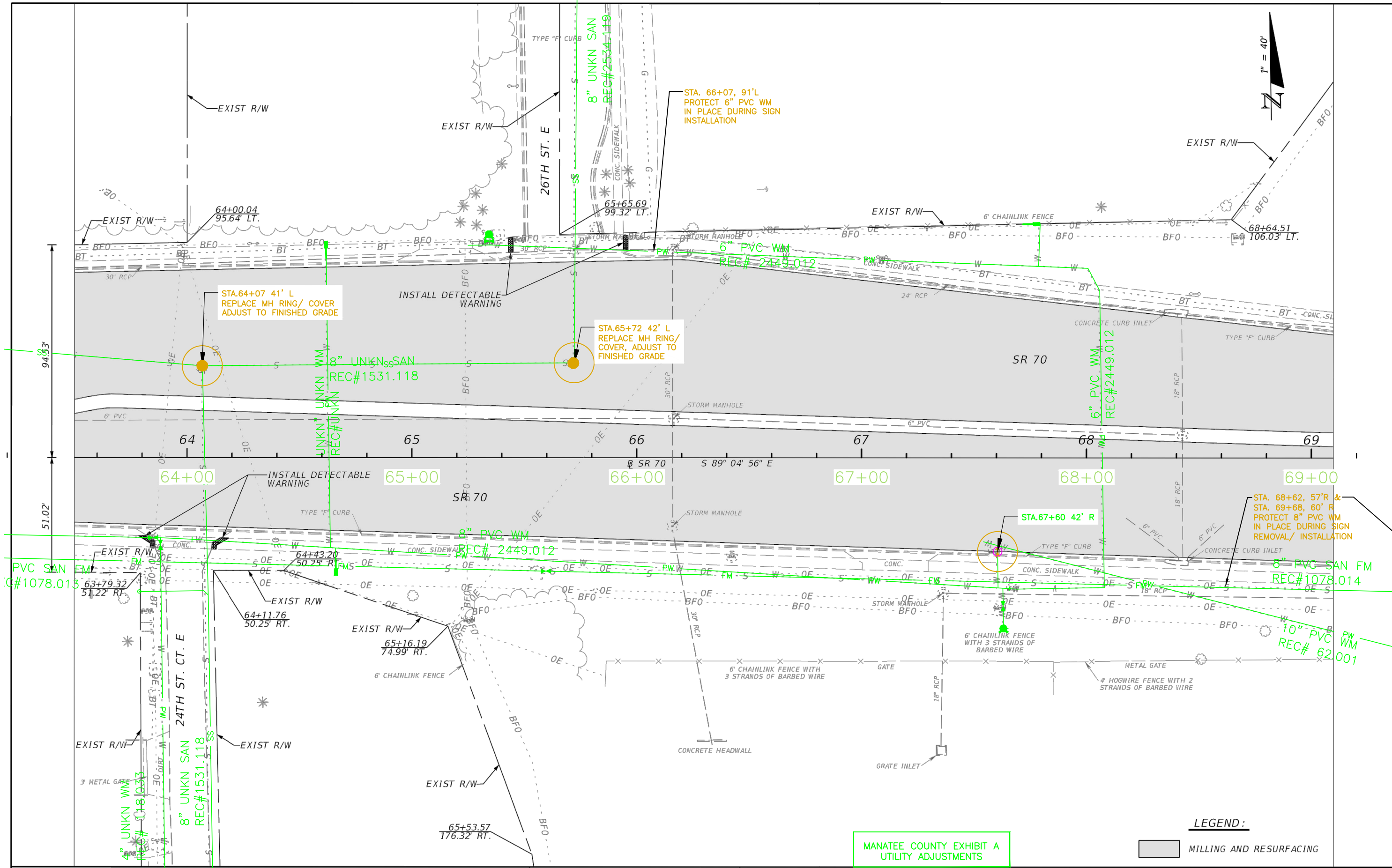
ROADWAY PLAN

SHEET NO.
26

MANATEE COUNTY EXHIBIT A
UTILITY ADJUSTMENTS

LEGEND:
 [Grey Box] MILLING AND RESURFACING

NOTICE: THE OFFICIAL RECORD OF THIS SHEET IS THE ELECTRONIC FILE SIGNED AND SEALED UNDER RULE 61G15-23.003, F.A.C.



STA.64+07 41' L
REPLACE MH RING/ COVER
ADJUST TO FINISHED GRADE

STA.65+72 42' L
REPLACE MH RING/ COVER,
ADJUST TO FINISHED GRADE

STA.67+60 42' R

STA. 68+62, 57'R &
STA. 69+68, 60' R
PROTECT 8\"/>

MANATEE COUNTY EXHIBIT A
UTILITY ADJUSTMENTS

LEGEND:
[Grey Box] MILLING AND RESURFACING

REVISIONS			
DATE	DESCRIPTION	DATE	DESCRIPTION

ENGINEER OF RECORD:
KELLIE F. SPURGEON, P.E.
P.E. LICENSE NUMBER 66484
FLORIDA DEPARTMENT OF TRANSPORTATION
801 N. BROADWAY AVENUE
BARTOW, FL 33830-3809

STATE OF FLORIDA DEPARTMENT OF TRANSPORTATION		
ROAD NO.	COUNTY	FINANCIAL PROJECT ID
70	MANATEE	431207-1-52-01

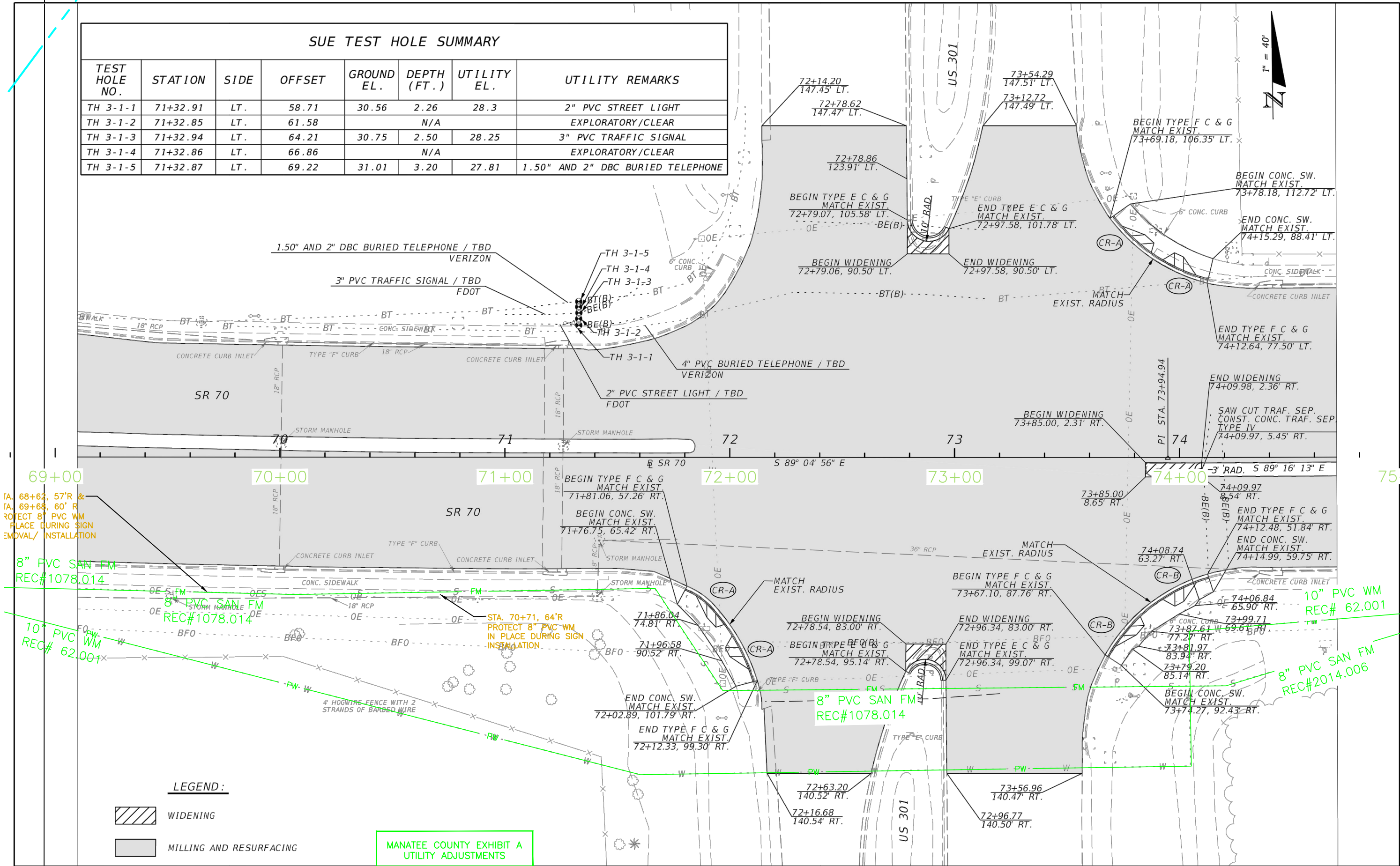
ROADWAY PLAN

SHEET NO.
27

NOTICE: THE OFFICIAL RECORD OF THIS SHEET IS THE ELECTRONIC FILE SIGNED AND SEALED UNDER RULE 61G15-23.003, F.A.C.

SUE TEST HOLE SUMMARY

TEST HOLE NO.	STATION	SIDE	OFFSET	GROUND EL.	DEPTH (FT.)	UTILITY EL.	UTILITY REMARKS
TH 3-1-1	71+32.91	LT.	58.71	30.56	2.26	28.3	2" PVC STREET LIGHT
TH 3-1-2	71+32.85	LT.	61.58		N/A		EXPLORATORY/CLEAR
TH 3-1-3	71+32.94	LT.	64.21	30.75	2.50	28.25	3" PVC TRAFFIC SIGNAL
TH 3-1-4	71+32.86	LT.	66.86		N/A		EXPLORATORY/CLEAR
TH 3-1-5	71+32.87	LT.	69.22	31.01	3.20	27.81	1.50" AND 2" DBC BURIED TELEPHONE



TA 68+62, 57'R &
TA 69+68, 60' R
ROTECT 8" PVC WM
PLACE DURING SIGN
EMOVAL/ INSTALLATION

8" PVC SAN FM
REC#1078.014

10" PVC WM
REC# 62.001

10" PVC WM
REC# 62.001

8" PVC SAN FM
REC#2014.006

LEGEND:

- WIDENING
- MILLING AND RESURFACING

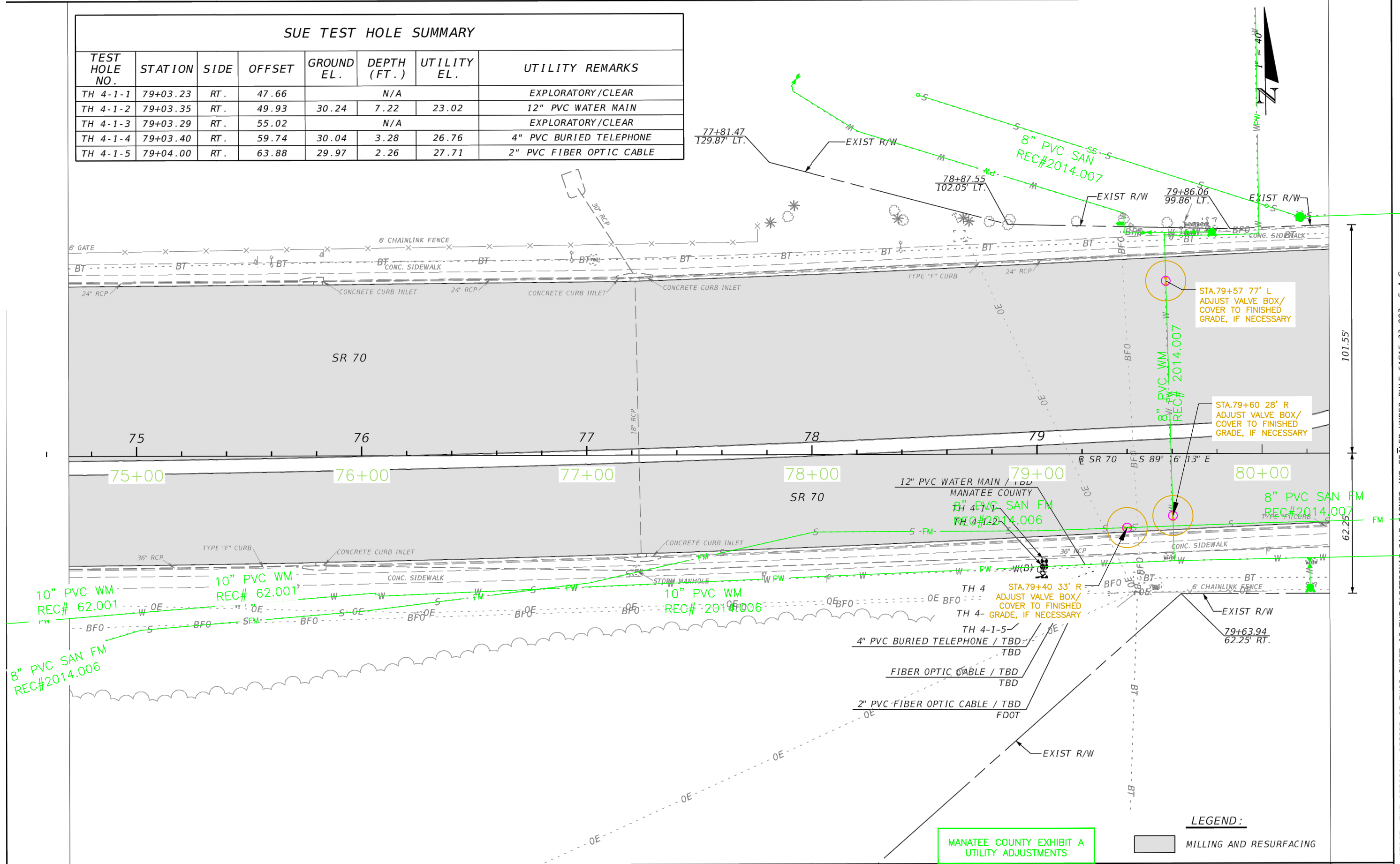
MANATEE COUNTY EXHIBIT A
UTILITY ADJUSTMENTS

REVISIONS				ENGINEER OF RECORD: KELLIE F. SPURGEON, P.E. P.E. LICENSE NUMBER 66484 FLORIDA DEPARTMENT OF TRANSPORTATION 801 N. BROADWAY AVENUE BARTOW, FL 33830-3809	STATE OF FLORIDA DEPARTMENT OF TRANSPORTATION			ROADWAY PLAN	SHEET NO. 28
DATE	DESCRIPTION	DATE	DESCRIPTION		ROAD NO.	COUNTY	FINANCIAL PROJECT ID		
					70	MANATEE	431207-1-52-01		

NOTICE: THE OFFICIAL RECORD OF THIS SHEET IS THE ELECTRONIC FILE SIGNED AND SEALED UNDER RULE 61G15-23.003, F.A.C.

SUE TEST HOLE SUMMARY

TEST HOLE NO.	STATION	SIDE	OFFSET	GROUND EL.	DEPTH (FT.)	UTILITY EL.	UTILITY REMARKS
TH 4-1-1	79+03.23	RT.	47.66		N/A		EXPLORATORY/CLEAR
TH 4-1-2	79+03.35	RT.	49.93	30.24	7.22	23.02	12" PVC WATER MAIN
TH 4-1-3	79+03.29	RT.	55.02		N/A		EXPLORATORY/CLEAR
TH 4-1-4	79+03.40	RT.	59.74	30.04	3.28	26.76	4" PVC BURIED TELEPHONE
TH 4-1-5	79+04.00	RT.	63.88	29.97	2.26	27.71	2" PVC FIBER OPTIC CABLE



NOTICE: THE OFFICIAL RECORD OF THIS SHEET IS THE ELECTRONIC FILE SIGNED AND SEALED UNDER RULE 61G15-23.003, F.A.C.

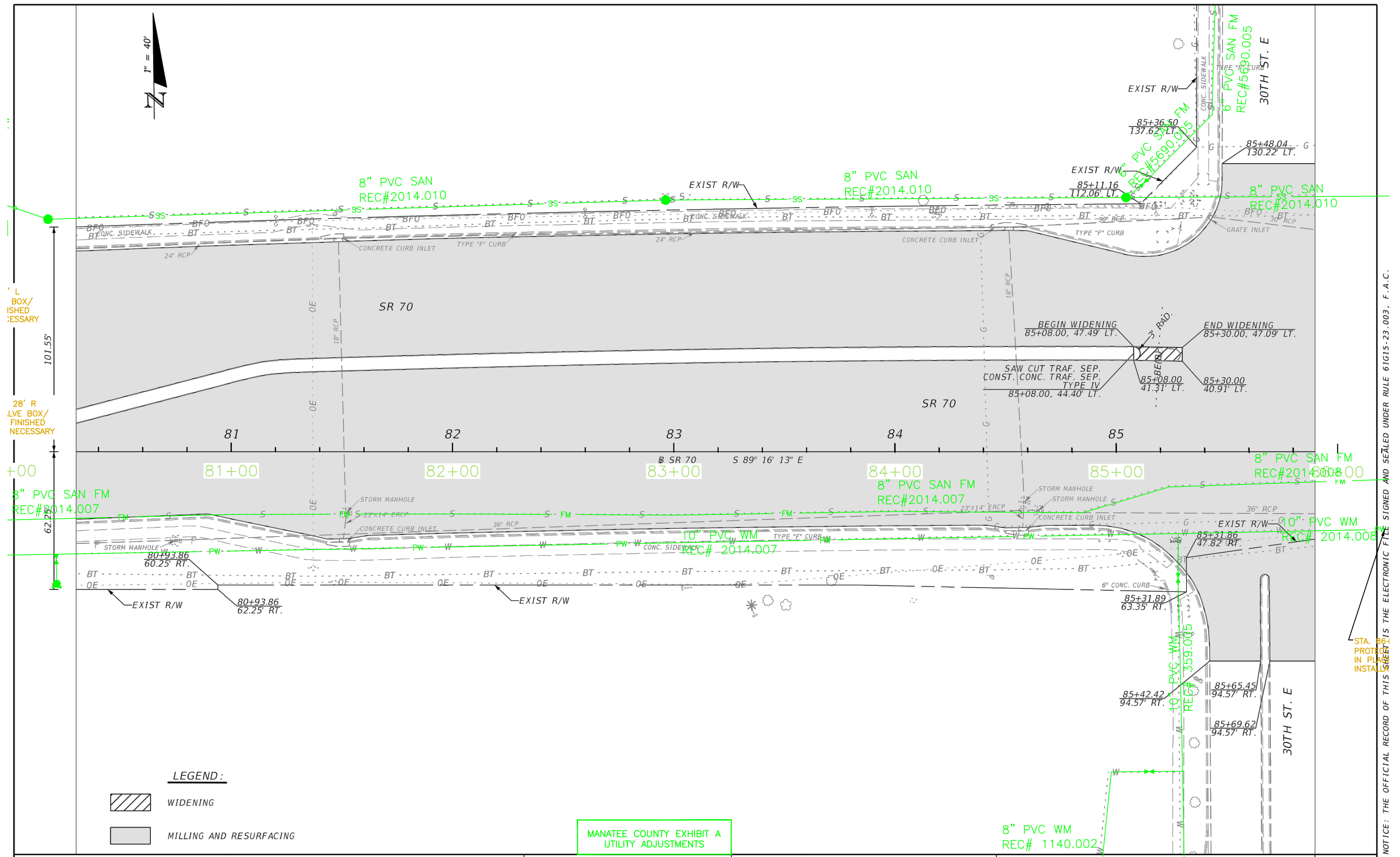
REVISIONS			
DATE	DESCRIPTION	DATE	DESCRIPTION

ENGINEER OF RECORD:
KELLIE F. SPURGEON, P.E.
P.E. LICENSE NUMBER 66484
FLORIDA DEPARTMENT OF TRANSPORTATION
801 N. BROADWAY AVENUE
BARTOW, FL 33830-3809

STATE OF FLORIDA DEPARTMENT OF TRANSPORTATION		
ROAD NO.	COUNTY	FINANCIAL PROJECT ID
70	MANATEE	431207-1-52-01

ROADWAY PLAN

SHEET NO.
29



REVISIONS			
DATE	DESCRIPTION	DATE	DESCRIPTION

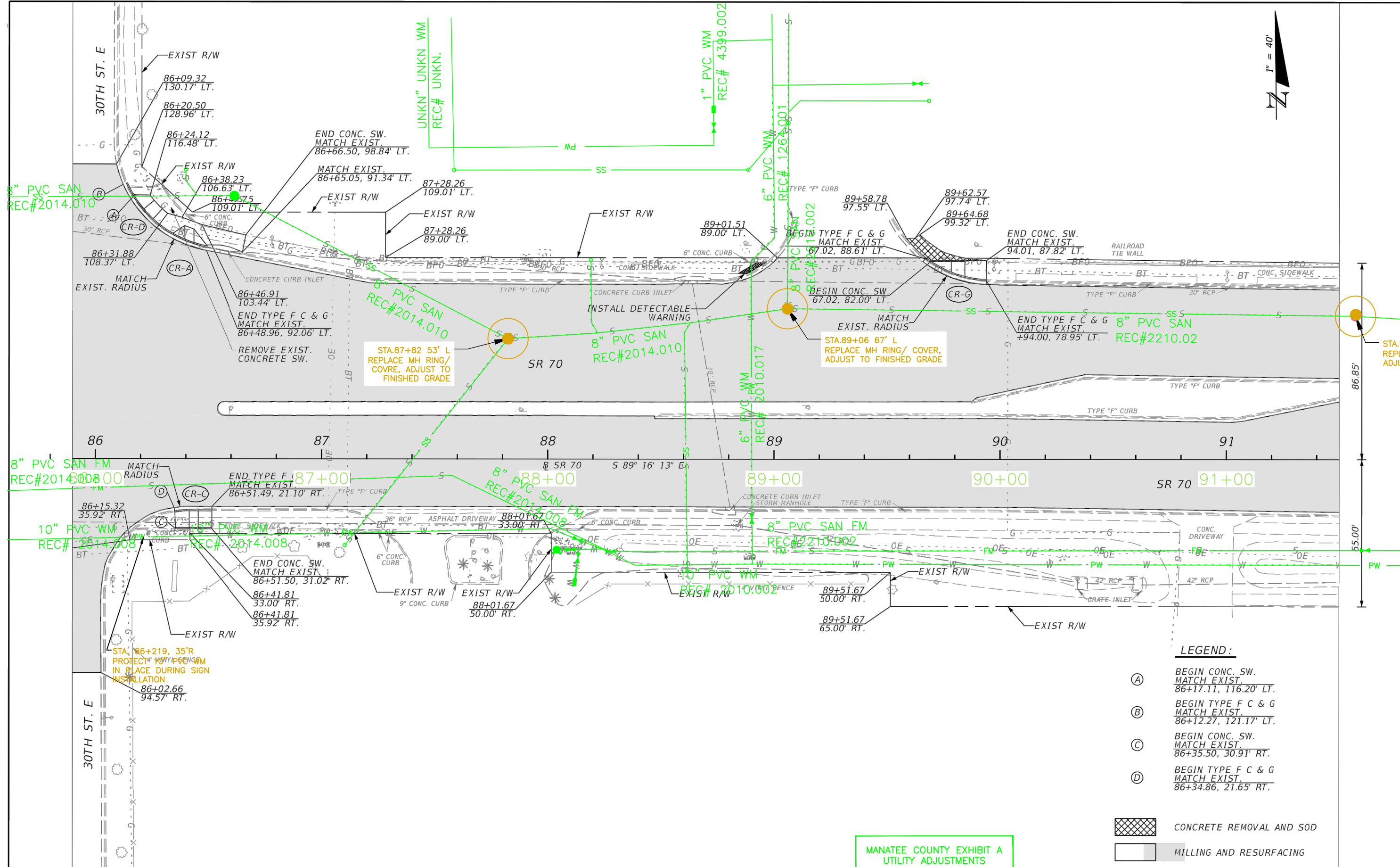
ENGINEER OF RECORD:
 KELLIE F. SPURGEON, P.E.
 P.E. LICENSE NUMBER 66484
 FLORIDA DEPARTMENT OF TRANSPORTATION
 801 N. BROADWAY AVENUE
 BARTOW, FL 33830-3809

STATE OF FLORIDA DEPARTMENT OF TRANSPORTATION		
ROAD NO.	COUNTY	FINANCIAL PROJECT ID
70	MANATEE	431207-1-52-01

ROADWAY PLAN

SHEET NO.
30

NOTICE: THE OFFICIAL RECORD OF THIS SHEET IS THE ELECTRONIC FILE SIGNED AND SEALED UNDER RULE 61G15-23.003, F.A.C.



- LEGEND:**
- (A) BEGIN CONC. SW. MATCH EXIST. 86+17.11, 116.20' LT.
 - (B) BEGIN TYPE F C & G MATCH EXIST. 86+12.27, 121.17' LT.
 - (C) BEGIN CONC. SW. MATCH EXIST. 86+35.50, 30.91' RT.
 - (D) BEGIN TYPE F C & G MATCH EXIST. 86+34.86, 21.65' RT.
- CONCRETE REMOVAL AND SOD
 - MILLING AND RESURFACING

MANATEE COUNTY EXHIBIT A
UTILITY ADJUSTMENTS

REVISIONS			
DATE	DESCRIPTION	DATE	DESCRIPTION

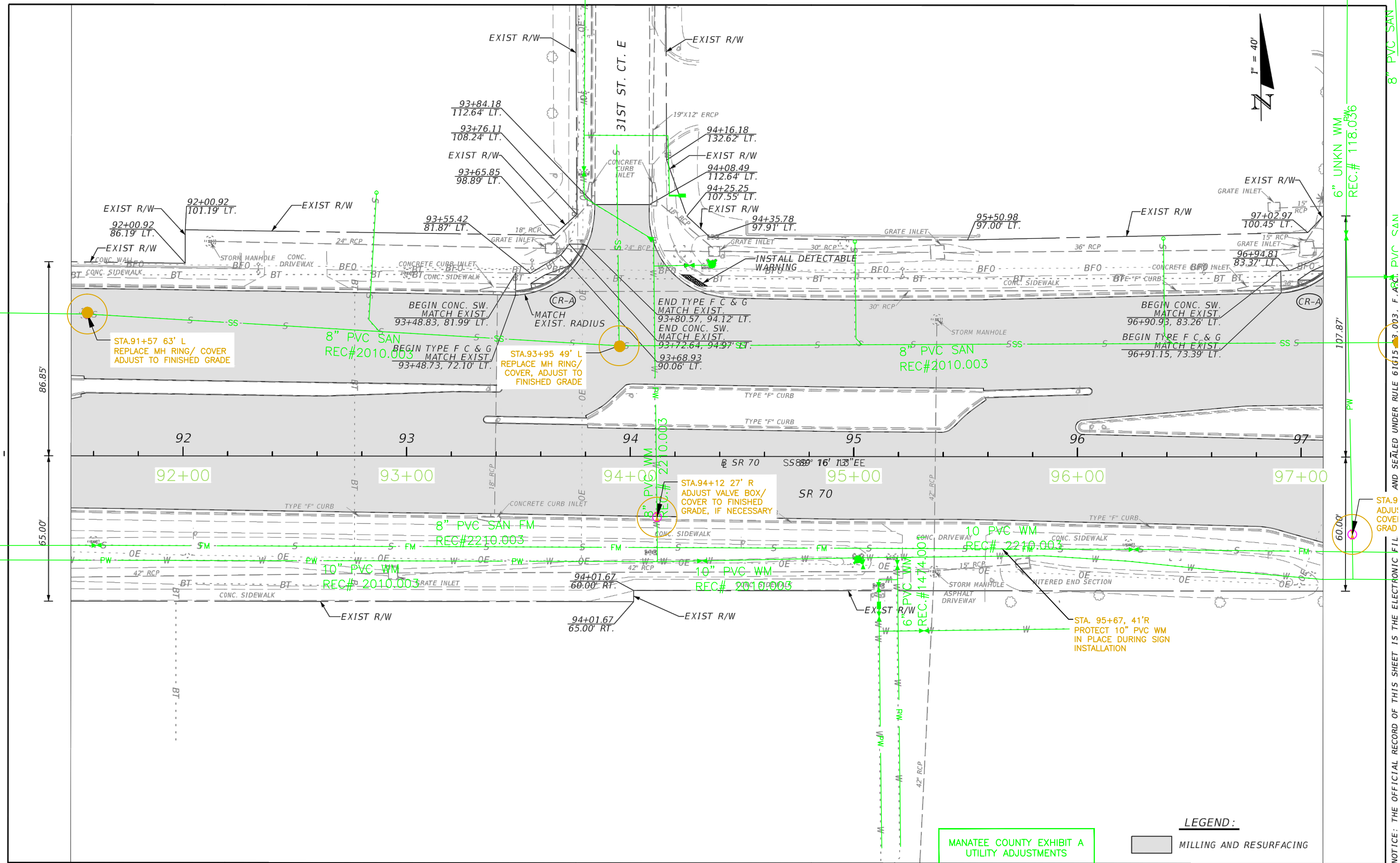
ENGINEER OF RECORD:
KELLIE F. SPURGEON, P.E.
P.E. LICENSE NUMBER 66484
FLORIDA DEPARTMENT OF TRANSPORTATION
801 N. BROADWAY AVENUE
BARTOW, FL 33830-3809

STATE OF FLORIDA DEPARTMENT OF TRANSPORTATION		
ROAD NO.	COUNTY	FINANCIAL PROJECT ID
70	MANATEE	431207-1-52-01

ROADWAY PLAN

SHEET NO.
31

NOTICE: THE OFFICIAL RECORD OF THIS SHEET IS THE ELECTRONIC FILE SIGNED AND SEALED UNDER RULE 6.003, F.A.C.



REVISIONS			
DATE	DESCRIPTION	DATE	DESCRIPTION

ENGINEER OF RECORD:
 KELLIE F. SPURGEON, P.E.
 P.E. LICENSE NUMBER 66484
 FLORIDA DEPARTMENT OF TRANSPORTATION
 801 N. BROADWAY AVENUE
 BARTOW, FL 33830-3809

STATE OF FLORIDA DEPARTMENT OF TRANSPORTATION		
ROAD NO.	COUNTY	FINANCIAL PROJECT ID
70	MANATEE	431207-1-52-01

ROADWAY PLAN SHEET NO. 32
--

MANATEE COUNTY EXHIBIT A
UTILITY ADJUSTMENTS

LEGEND:
 MILLING AND RESURFACING

NOTICE: THE OFFICIAL RECORD OF THIS SHEET IS THE ELECTRONIC FILE AND SEALED UNDER RULE 61G15-3.003, F.A.C. PVC SAN 8" UNKN WM REC.# 118.036