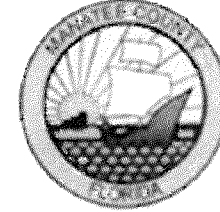


MANATEE COUNTY
BOARD OF COUNTY COMMISSIONERS
BRADENTON, FLORIDA



PLANS OF PROPOSED

CSDG PROJ. NO.	SHEET NO.
024002008	1

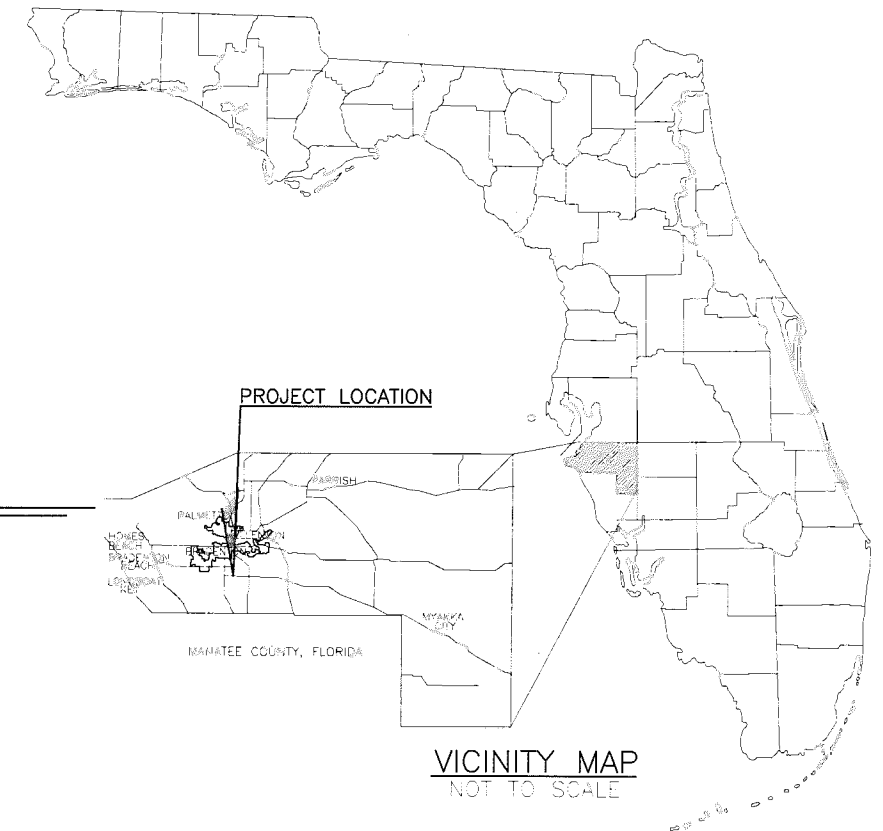
INDEX OF PLANS

SHEET NO.	SHEET DESCRIPTION
1	KEY SHEET
2	SUMMARY OF PAY ITEMS
3	TYPICAL SECTION
4-9	PLAN AND PROFILE
10-16	CROSS SECTIONS

MORGAN JOHNSON SIDEWALK

*TEXT IN BOLD INCLUDED IN SET
TEXT NOT IN BOLD NOT INCLUDED IN SET

COUNTY PROJECT NO. 0019900
CSDG PROJECT NO. 024002008
MANATEE COUNTY, FLORIDA
S13 T35S R17E



TOM WRIGHT
BRIGHTHOUSE NETWORKS
5413 SR 64 EAST
BRADENTON, FL 34208
(941) 345-1312

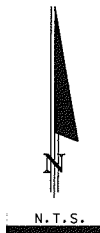
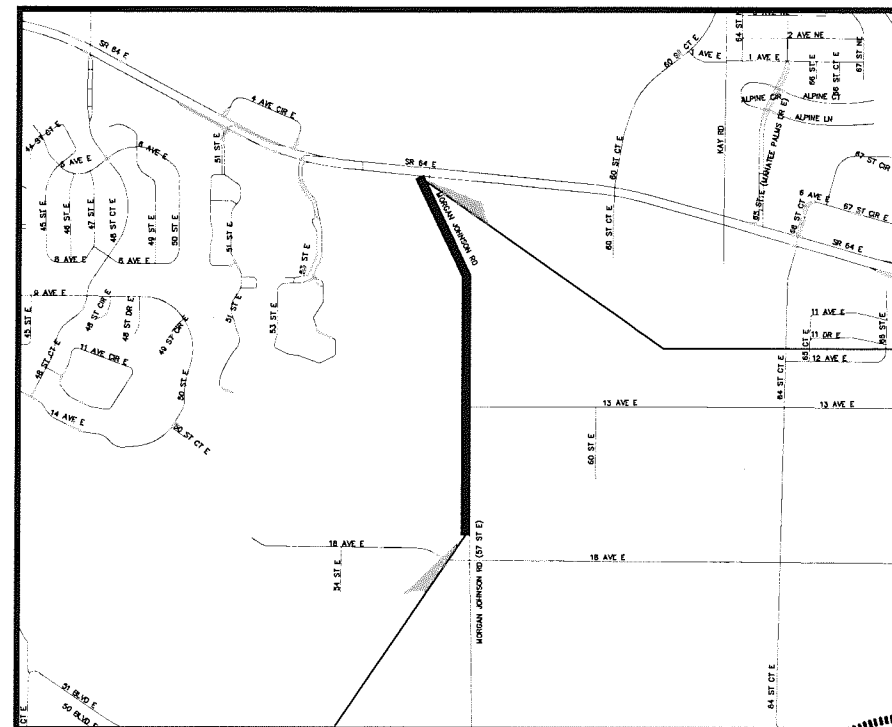
MR. GREG COKER
FLORIDA POWER & LIGHT
1253 12TH AVENUE EAST
PALMETTO, FL 34221
(941) 723-4430

DAVID WYNNS
VERIZON FLORIDA INC.
1909 US HWY 301 N
TAMPA, FL 33619
(813) 978-2164

DAN SHANAHAN
TECO PEOPLES GAS
8261 VICO CT.
SARASOTA, FL 34240
(941) 342-4006

JIM MCCLELLAN
CITY OF BRADENTON
1411 9TH STREET
BRADENTON, FL 34205
(941) 462-1989

KATHY MCMAHON
MANATEE COUNTY
UTILITIES DEPT.
4422-C 66TH AVE
BRADENTON, FL 34210
(941) 792-8811



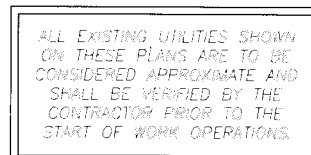
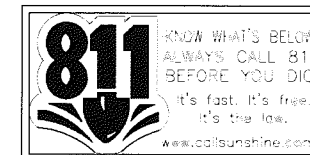
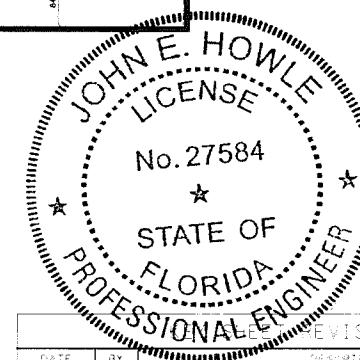
END PROJECT
MORGAN JOHNSON SIDEWALK
STA. 42+37.45

BEGIN PROJECT
MORGAN JOHNSON SIDEWALK
STA 10+99.30

LOCATION MAP

PROJECT LENGTH
3138.15 LF OR 0.60 MILES

BID PLANS
1/8/15



PLANS PREPARED BY:



Civil Surv Design Group, Inc.
2525 Drone Field Rd.
Suite 7
Lakeland, FL 33811
Tel: 863-648-4771
Certificate of Authorization
No. 28988

ENGINEER OF RECORD:
JOHN E. HOWLE, P.E.
P.E. NO. 27584

- NOTE:
1. THE SCALE OF THESE PLANS MAY HAVE BEEN CHANGED DUE TO REPRODUCTION.
 2. GOVERNING STANDARDS AND SPECIFICATIONS:
FLORIDA DEPARTMENT OF TRANSPORTATION, DESIGN STANDARDS DATED 2015,
AND STANDARD SPECIFICATIONS FOR ROAD AND BRIDGE CONSTRUCTION DATED 2015,
AS AMENDED BY CONTRACT DOCUMENTS.

APPLICABLE DESIGN STANDARDS MODIFICATIONS:
 3. FOR DESIGN STANDARDS MODIFICATIONS CLICK ON "DESIGN STANDARDS" AT THE
FOLLOWING WEB SITE: [HTTP://WWW.DOT.STATE.FL.US/RDDESIGN/](http://www.dot.state.fl.us/RDDESIGN/)
 4. UNDERGROUND UTILITIES: THE LOCATIONS OF UNDERGROUND UTILITIES AS SHOWN ON
THE PLANS HAVE BEEN OBTAINED BY FIELD SURVEYS AND SEARCHES OF AVAILABLE
RECORDS. IT IS BELIEVED THAT THIS DATA IS ESSENTIALLY CORRECT. HOWEVER,
THESE PLANS DO NOT GUARANTEE THEIR ACCURACY OR COMPLETENESS. THE
CONTRACTOR WILL BE REQUIRED TO VERIFY THE EXACT LOCATION OF EACH FACILITY
WITH THE UTILITY COMPANY WHEN THE POTENTIAL EXISTS FOR INVOLVEMENT AND
SHALL TAKE DUE CARE IN ALL PHASES OF THE CONSTRUCTION TO PROTECT ANY
SUCH FACILITIES WHICH MAYBE AFFECTED BY THE WORK. ANY DAMAGE TO EXISTING
UTILITIES SHALL BE REPAIRED AT THE CONTRACTOR'S EXPENSE.

REVISIONS		
DATE	BY	DESCRIPTION

ATTENTION IS DIRECTED TO THE FACT THAT THESE PLANS MAY HAVE BEEN ALTERED IN SIZE
BY REPRODUCTION. THIS MUST BE CONSIDERED WHEN OBTAINING SCALED DATA.

APPROVED BY:
JOHN E. HOWLE, P.E. NO. 27584
DATE: 3/23/15

SUMMARY OF PAY ITEMS

ITEM NUMBER	PAY ITEM DESCRIPTION	UNIT	QUANTITY
101- 1-	MOBILIZATION	LS	1
102- 1-	MAINTENANCE OF TRAFFIC	LS	1
102- 3-	COMMERCIAL MATERIAL FOR DRIVEWAY MAINTENANCE	CY	150
104- 10- 3	SEDIMENT BARRIER	LF	2919
110- 1- 1	CLEARING AND GRUBBING	LS	1
120- 1-	REGULAR EXCAVATION	CY	275
120- 6	EMBANKMENT	CY	309
400- 1- 2	CONCRETE CLASS I, ENDWALLS	CY	4
425- 1-521	INLETS, DT BOT, TYPE C, <10'	EA	1
425- 2- 71	MANHOLES, J-7, <10'	EA	1
430-175-118	PIPE CULVERT, OPTIONAL MATERIAL, ROUND, 18" S/CD	LF	86
430-175-215	PIPE CULVERT, OPTIONAL MATERIAL, OTHER - ELLIP/ARCH, 15" S/CD	LF	77
430-175-218	PIPE CULVERT, OPTIONAL MATERIAL, OTHER - ELLIP/ARCH, 18" S/CD	LF	60
430-175-224	PIPE CULVERT, OPTIONAL MATERIAL, OTHER - ELLIP/ARCH, 24" S/CD	LF	27
430-982-125	MITERED END SECTION, OPTIONAL ROUND 18" CD	EA	1
430-982-623	MITERED END SECTION, OPTIONAL - ELLIP/ARCH, 15" CD	EA	2
430-984-125	MITERED END SECTION, OPTIONAL, ROUND, 18" SD	EA	7
430-984-625	MITERED END SECTION, OPTIONAL - ELLIP/ARCH, 18" SD	EA	2
430-984-629	MITERED END SECTION, OPTIONAL - ELLIP/ARCH, 24" SD	EA	3
515- 2- 211	PEDESTRIAN/BICYCLE RAILING (STEEL, 42" PICKET RAILING)	LF	90
522- 1-	SIDEWALK CONCRETE, 4" THICK	SY	1,623
522- 2-	SIDEWALK CONCRETE, 6" THICK	SY	57
527- 2	DETECTABLE WARNINGS	SF	75
570- 1- 2	PERFORMANCE TURF (SOD)	SY	2,524
700- 1- 50	SINGLE SIGN POST (RELOCATE)	AS	2
SPECIAL	SIDEWALK TRENCH DRAIN	EA	3

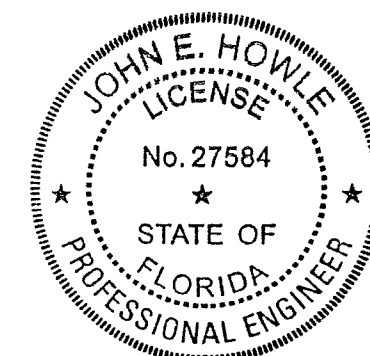
LEGEND:

- SET 5/8" STEEL ROD WITH CAP STAMPED "CIVILSURV LB 7805" (UNLESS NOTED OTHERWISE)
- SET NAIL & DISK STAMPED "CIVILSURV DESIGN GROUP LB 7805" (UNLESS NOTED OTHERWISE)
- FOUND 4"x4" CONCRETE MONUMENT WITH NO IDENTIFYING CAP OR DISC (UNLESS NOTED OTHERWISE)
- ▲ HORIZONTAL CONTROL POINT AND/OR BENCHMARK AS NOTED
- FOUND 5/8" STEEL ROD WITH NO IDENTIFYING CAP (UNLESS NOTED OTHERWISE)
- FOUND MONUMENTATION AS NOTED
- LT LEFT
- RT RIGHT
- PI POINT OF INTERSECTION
- I.D. IDENTIFICATION
- L.B. LICENSED BUSINESS NO. NUMBER
- P.L.S. PROFESSIONAL LAND SURVEYOR
- P.S.M. PROFESSIONAL SURVEYOR AND MAPPER
- RLS REGISTERED LAND SURVEYOR
- (C) CALCULATED DIMENSION
- (D) DEED DIMENSION
- (F) FIELD DIMENSION
- (P) PLATTED DIMENSION
- P.R.M. PERMANENT REFERENCE MONUMENT
- P.C.P. PERMANENT CONTROL POINT
- O.R. OFFICIAL RECORD
- C/L CENTERLINE
- R/W RIGHT OF WAY
- EGP EDGE OF PAYEMENT
- ☐ MAILBOX
- x 1.1 TYPICAL SPOT ELEVATION
- X— BARBED WIRE FENCE (B/W/F)
- O— CHAIN LINK FENCE (C/L/F)
- WOOD PRIVACY FENCE (W/P/F)
- X— HOG WIRE FENCE (H/W/F)
- OH— OVERHEAD UTILITY LINE(S)
- ☆ WOOD UTILITY POLE
- ◀ LIGHT POLE (WOOD/CONCRETE)
- ← GUY ANCHOR
- ◊ CMP CORRUGATED METAL PIPE
- ◊ RCP REINFORCED CONCRETE PIPE
- MES MITERED END SECTION
- R— ROADWAY/STREET SIGN
- TSCB TELEPHONE SERVICE BOX/CONTROL PANEL
- TPB TELEPHONE SERVICE PULL BOX/VAULT
- TD TELEPHONE DELINEATOR POST
- WM WATER METER
- WV WATER VALVE
- F/H FIRE HYDRANT
- SM SANITARY SEWER MANHOLE
- SDM STORM/DRAINAGE MANHOLE
- GAS MONITOR WELL FOR GAS
- BFP BACKFLOW PREVENTOR
- CO CLEANOUT
- EM ELECTRIC METER
- PL PROPERTY LINE
- BL BASELINE
- STA STATION

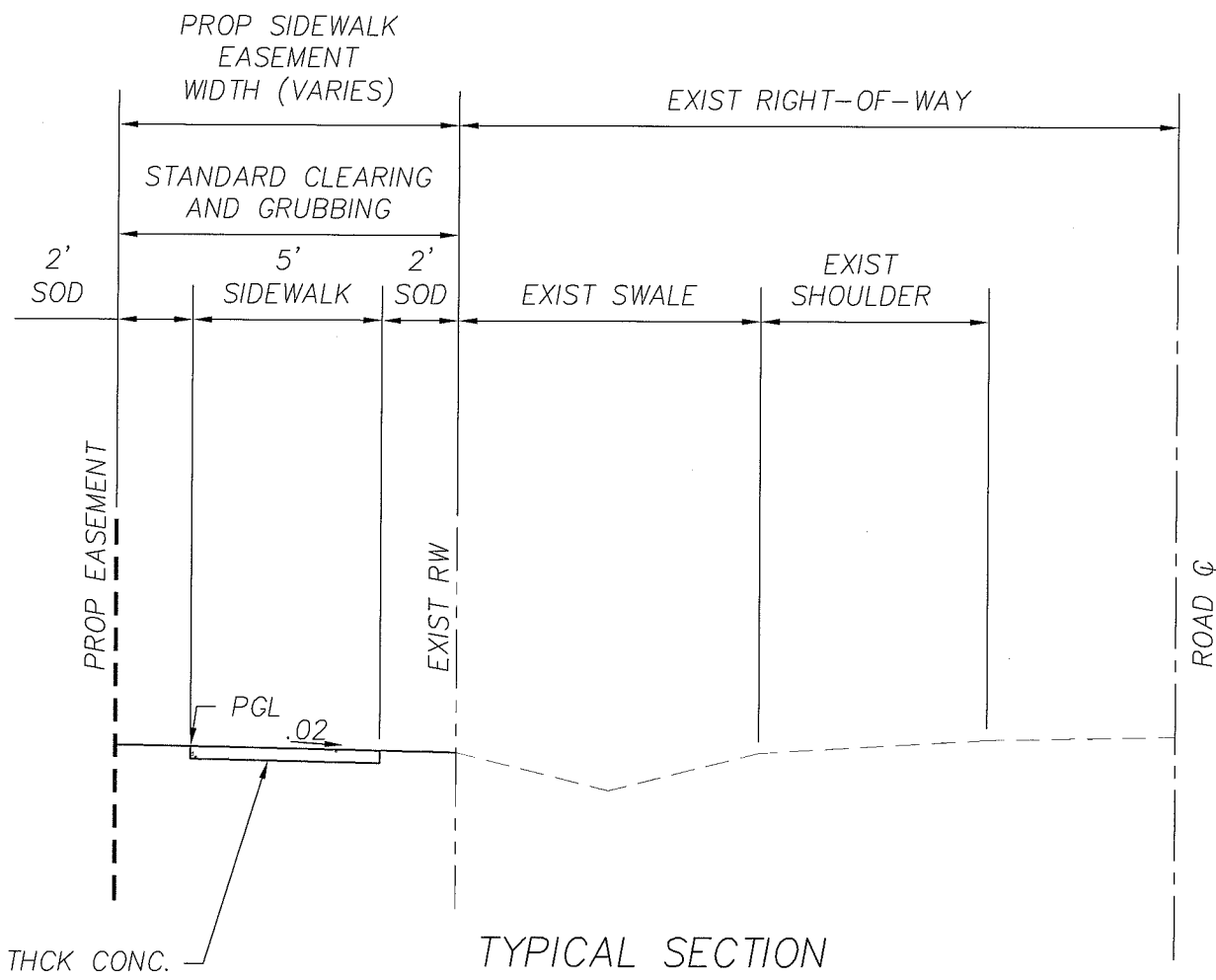
NOTES:

101-1 INCLUDES COST OF RECORD DRAWINGS AND PRE-CONSTRUCTION VIDEO/PHOTOGRAPHS.

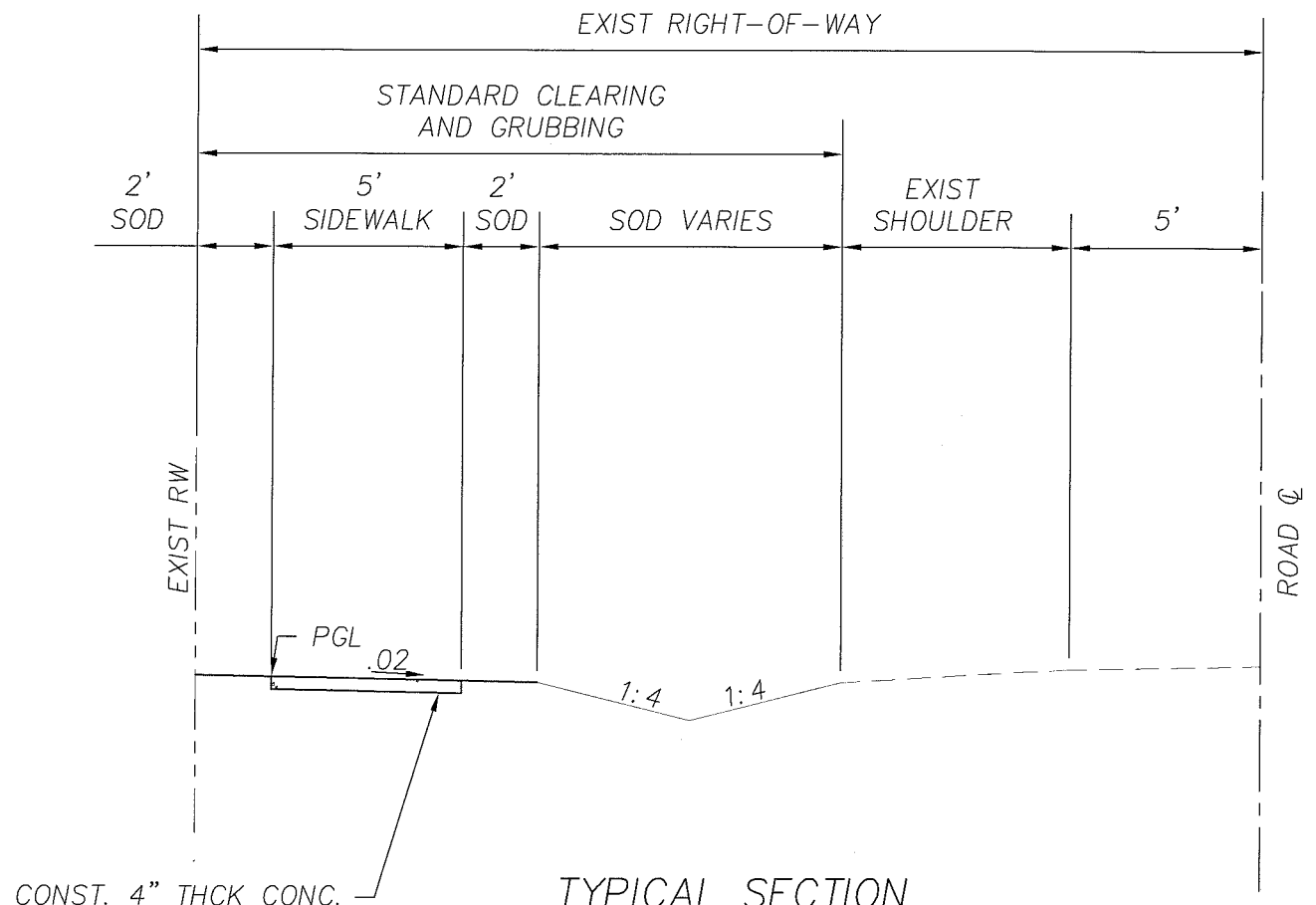
570-1-2 INCLUDES COST OF THE SOIL, FERTILIZER AND WATER NEEDED TO ESTABLISH A STAND OF GRASS IN COST OF PERFORMANCE TURF (SOD).



<p>MANATEE COUNTY PUBLIC WORKS DEPARTMENT</p> <p>CIVILSURV A Tradition of Innovative Engineering</p>			<p>DESIGNED BY: RLB 8/10</p> <p>DRAWN BY: EW 8/10</p> <p>CHECKED BY: JEH 8/10</p>		<p>NAME: [Signature]</p> <p>DATE: 5/23/15</p>		<p>MORGAN JOHNSON SIDEWALK</p> <p>SUMMARY OF PAY ITEMS</p> <p>MANATEE COUNTY, FLORIDA</p>	
--	--	--	---	--	---	--	--	--

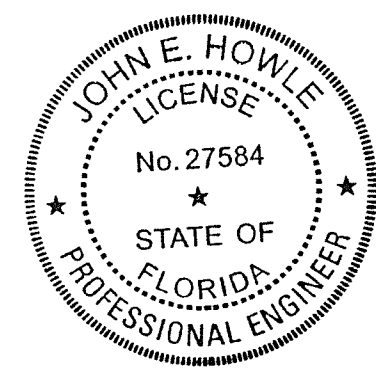


TYPICAL SECTION
 STA 10+99.3 TO STA 24+75
 STA 28+04 TO STA 35+44.32
 SCALE: N.T.S.



TYPICAL SECTION
 STA 24+75 TO STA 28+04
 STA 35+44.32 TO STA 42+37.45
 SCALE: N.T.S.

- NOTES:
1. RELOCATE ANY WATER METER LOCATED WITHIN THE LIMITS OF THE SIDEWALK AS DIRECTED BY THE MANATEE COUNTY UTILITIES DEPARTMENT. COST TO BE INCLUDED IN CLEARING AND GRUBBING.
 2. REPLACE ANY SERVICES DAMAGED DURING CONSTRUCTION FROM MAIN TO METER.
 3. ALL EXISTING VALVE BOXES SHALL BE ADJUSTED TO FINISHED GRADE IN SIDEWALK. (SEE MANATEE COUNTY SPEC UW-2, UW-17, UW-5, UW 6)
 4. SOD ALL DISTURBED AREAS IN LIKE KIND OF EXISTING
 5. ANY EXISTING SEWER SERVICE CLEANOUT IN THE AREA OF CONSTRUCTION SHALL BE ADJUSTED PER MANATEE COUNTY SPEC US-13.



REVISIONS					
Date	By	Description	Date	By	Description

MANATEE COUNTY
 PUBLIC WORKS

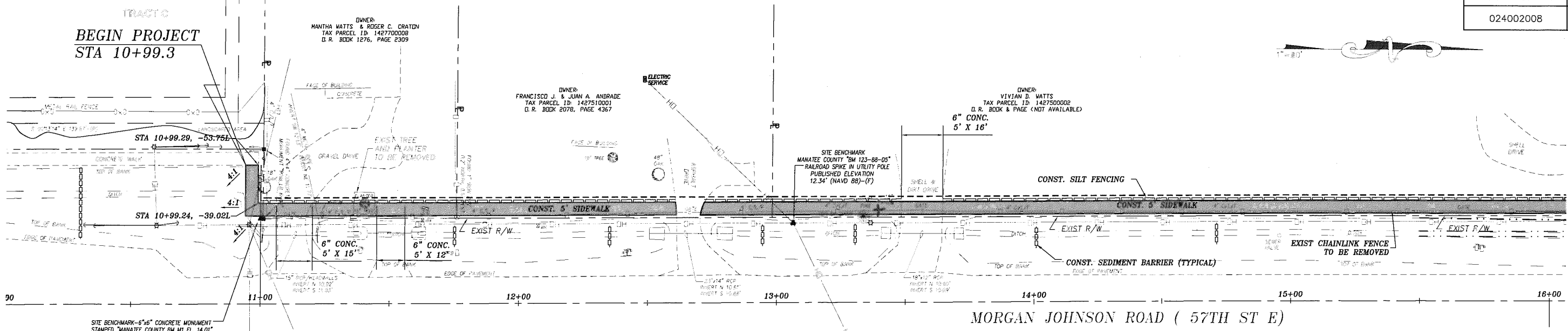


202b Design Group, Inc.
 302b Drake Field Rd.
 Suite 7
 Lake City, FL 33811
 Tel: 888-886-4171

NAME	DATE
DESIGNED BY: JEH	8/10
DRAWN BY: EW	8/10
CHECKED BY: JEH	8/10

DATE: 3/23/15

MORGAN JOHNSON SIDEWALK
 TYPICAL SECTION
 MANATEE COUNTY, FLORIDA



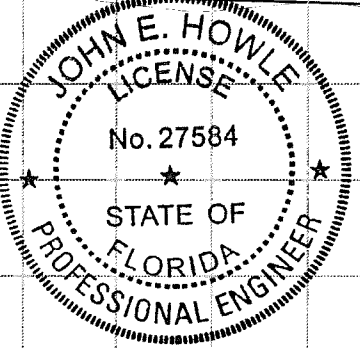
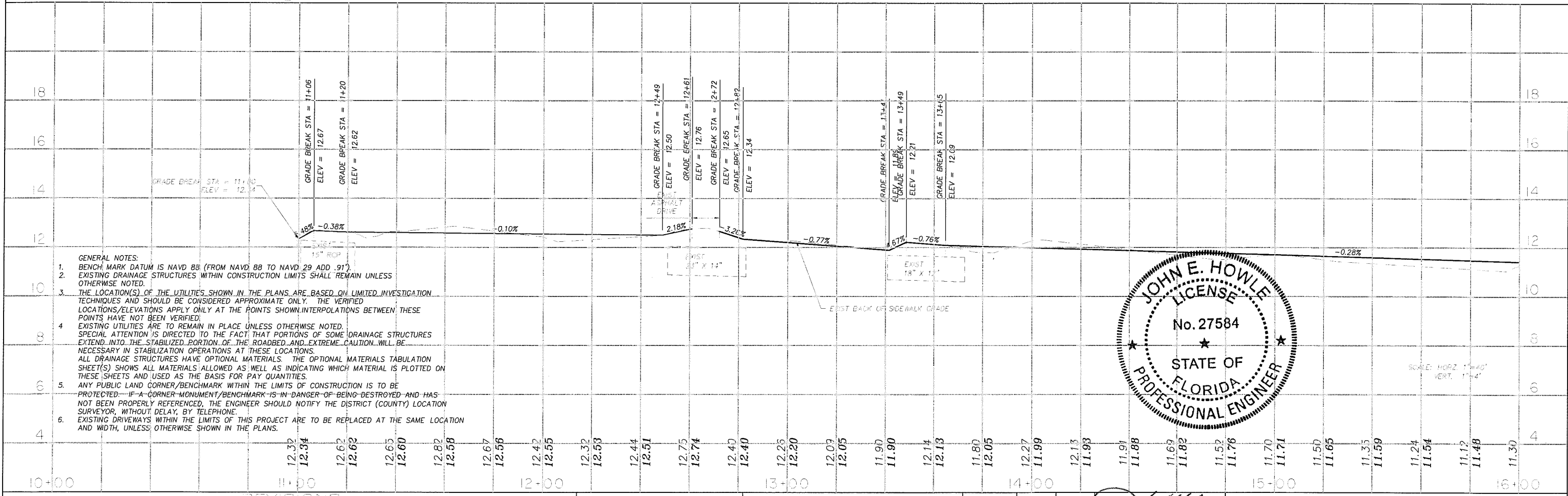
*THE BENCHMARKS AND ELEVATIONS SHOWN ARE TO NORTH AMERICAN VERTICAL DATUM OF 1988 (NAVD 88) AND ARE BASED ON MANATEE COUNTY BENCHMARKS "123-88-02" (PUBLISHED ELEVATION 6.59') AND "123-88-06" (PUBLISHED ELEVATION 12.63'). FOR REFERENCE TO NATIONAL GEODETIC VERTICAL DATUM OF 1929 (NGVD 29) MANATEE COUNTY BENCHMARK "BM M1" (PUBLISHED ELEVATION 14.01') WAS TIED TO THE ABOVE REFERENCED BENCHMARK "123-88-06" AND THE ELEVATION OF 13.11' (NAVD 88) WAS OBTAINED FOR "BM M1" AND FLORIDA DEPARTMENT OF TRANSPORTATION BENCHMARK "BM 120" (PUBLISHED ELEVATION 9.073') WAS TIED TO THE ABOVE REFERENCED BENCHMARK "123-88-02" AND THE ELEVATION OF 8.15' (NAVD 88) WAS OBTAINED FOR "BM 120".

HORIZONTAL CONTROL POINT AND SITE BENCHMARK "A1" 5/8" CAPPED STEEL ROD "CIVILSURV TRAVERSE PT" N=114897.638', E=497471.544' ELEVATION 12.82'(NAVD88) STA 12+20.48/15.87' RT

*THE MAINTAINED RIGHT-OF-WAY LINES ARE PER ROAD PLAT BOOK 9, PAGES 120-140. THE OTHER RIGHT-OF-WAY LINES SHOWN ARE BASED ON RECORD PLAT AND CURRENT DEED OF RECORD



ALL EXISTING DATA ILLUSTRATED BY THIS LETTERING TYPE
ALL PROPOSED DATA ILLUSTRATED BY THIS LETTERING TYPE



SCALE: HORIZ. 1"=40'
VERT. 1"=4'

- GENERAL NOTES:
- BENCH MARK DATUM IS NAVD 88 (FROM NAVD 88 TO NAVD 29 ADD .91')
 - EXISTING DRAINAGE STRUCTURES WITHIN CONSTRUCTION LIMITS SHALL REMAIN UNLESS OTHERWISE NOTED.
 - THE LOCATION(S) OF THE UTILITIES SHOWN IN THE PLANS ARE BASED ON LIMITED INVESTIGATION TECHNIQUES AND SHOULD BE CONSIDERED APPROXIMATE ONLY. THE VERIFIED LOCATIONS/ELEVATIONS APPLY ONLY AT THE POINTS SHOWN. INTERPOLATIONS BETWEEN THESE POINTS HAVE NOT BEEN VERIFIED.
 - EXISTING UTILITIES ARE TO REMAIN IN PLACE UNLESS OTHERWISE NOTED. SPECIAL ATTENTION IS DIRECTED TO THE FACT THAT PORTIONS OF SOME DRAINAGE STRUCTURES EXTEND INTO THE STABILIZED PORTION OF THE ROADBED AND EXTREME CAUTION WILL BE NECESSARY IN STABILIZATION OPERATIONS AT THESE LOCATIONS. ALL DRAINAGE STRUCTURES HAVE OPTIONAL MATERIALS. THE OPTIONAL MATERIALS TABULATION SHEET(S) SHOWS ALL MATERIALS ALLOWED AS WELL AS INDICATING WHICH MATERIAL IS PLOTTED ON THESE SHEETS AND USED AS THE BASIS FOR PAY QUANTITIES.
 - ANY PUBLIC LAND CORNER/BENCHMARK WITHIN THE LIMITS OF CONSTRUCTION IS TO BE PROTECTED. IF A CORNER/MONUMENT/BENCHMARK IS IN DANGER OF BEING DESTROYED AND HAS NOT BEEN PROPERLY REFERENCED, THE ENGINEER SHOULD NOTIFY THE DISTRICT (COUNTY) LOCATION SURVEYOR, WITHOUT DELAY, BY TELEPHONE.
 - EXISTING DRIVEWAYS WITHIN THE LIMITS OF THIS PROJECT ARE TO BE REPLACED AT THE SAME LOCATION AND WIDTH, UNLESS OTHERWISE SHOWN IN THE PLANS.

REVISIONS					
Date	By	Description	Date	By	Description

MANATEE COUNTY PUBLIC WORKS
CSDG Field Book No.

CIVILSURV
A Tradition of Innovative Engineering

Design: Design Group, Inc.
2555 Stone Field Rd.
Suite 7
Lutz, FL 33611
Tel: 813-688-4771

Contractor: [Signature]
Date: 3/23/15

NAME	DATE
DESIGNED BY: RLB	8/10
DRAWN BY: EW	8/10
CHECKED BY: JEH	8/10

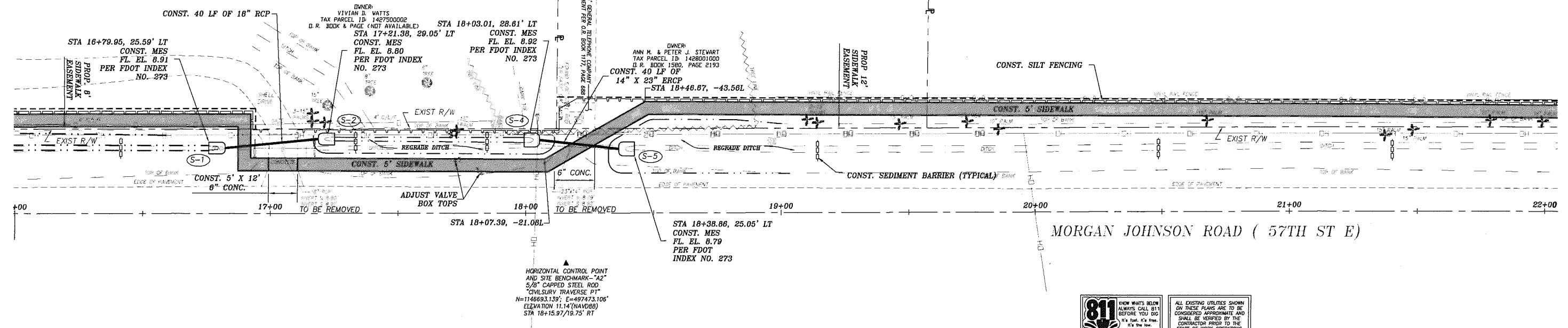
MORGAN JOHNSON SIDEWALK
PLAN & PROFILE SHEET
STA. 10+00 TO STA. 16+00
MANATEE COUNTY, FLORIDA

V:\Projects\024 - Manatee County\002 Master Contract 2008-2012\008 - Manatee County - Morgan Johnson Rd Sidewalk\Drawings\024002008RFR.dwg, 4/19/2015 3:11:47 PM, Bluebeam PDF

OWNER:
JEANE A. MCCARTHY
TAX PARCEL ID 1428000051
D.R. BOOK & PAGE (NOT AVAILABLE)

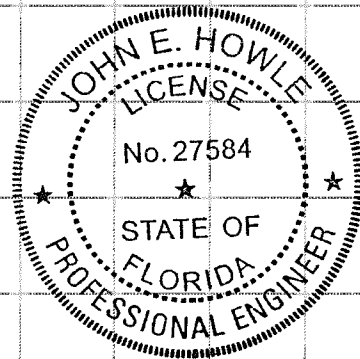
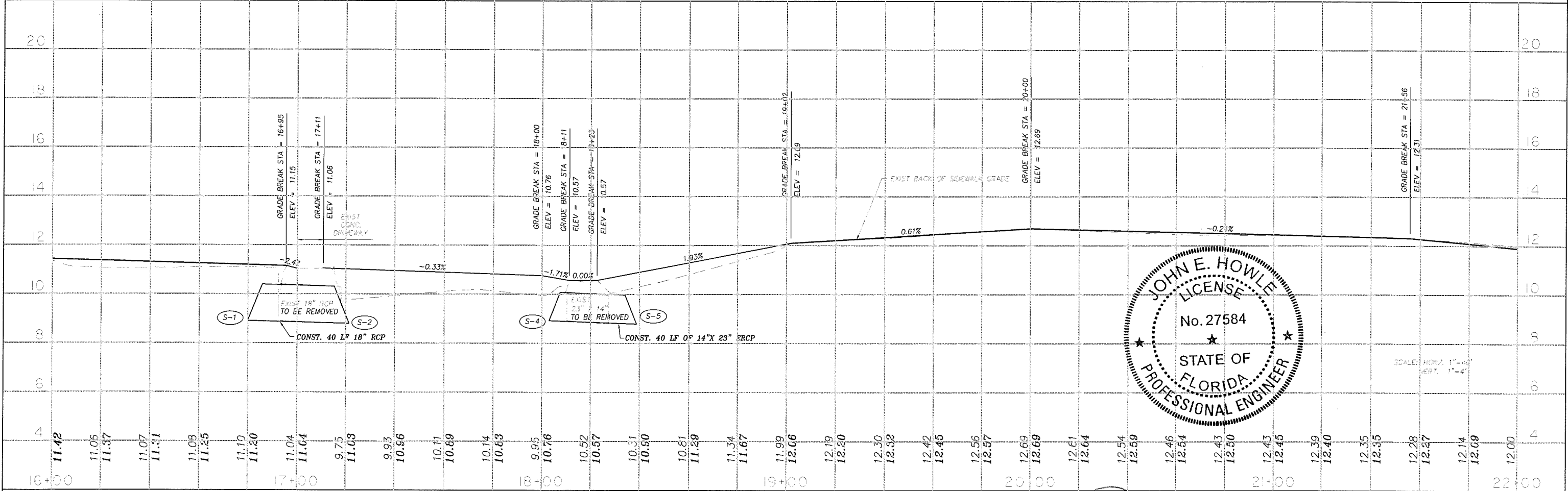


*NOTE: REMOVE VEGETATION AS REQUIRED TO CONSTRUCT SIDEWALK



ALL EXISTING UTILITIES SHOWN ON THESE PLANS ARE TO BE CONSIDERED APPROXIMATE AND SHALL BE VERIFIED BY THE CONTRACTOR PRIOR TO THE START OF WORK OPERATIONS.

ALL EXISTING DATA ILLUSTRATED BY THIS LETTERING TYPE
ALL PROPOSED DATA ILLUSTRATED BY THIS LETTERING TYPE



SCALE: HORIZ. 1"=40'
VERT. 1"=4'

Date	By	Description	Date	By	Description

MANATEE COUNTY PUBLIC WORKS
CSDC Field Book No.:



CivilSurv Design Group, Inc.
2325 Crane Field Rd.
Suite 100
Lakeland, FL 33811
Tel: 863-646-6771

DESIGNED BY	DATE
RLB	8/10
DRAWN BY	DATE
EW	8/10
CHECKED BY	DATE
JEH	8/10

MORGAN JOHNSON SIDEWALK
PLAN & PROFILE SHEET
STA. 16+00 TO STA. 22+00
MANATEE COUNTY, FLORIDA

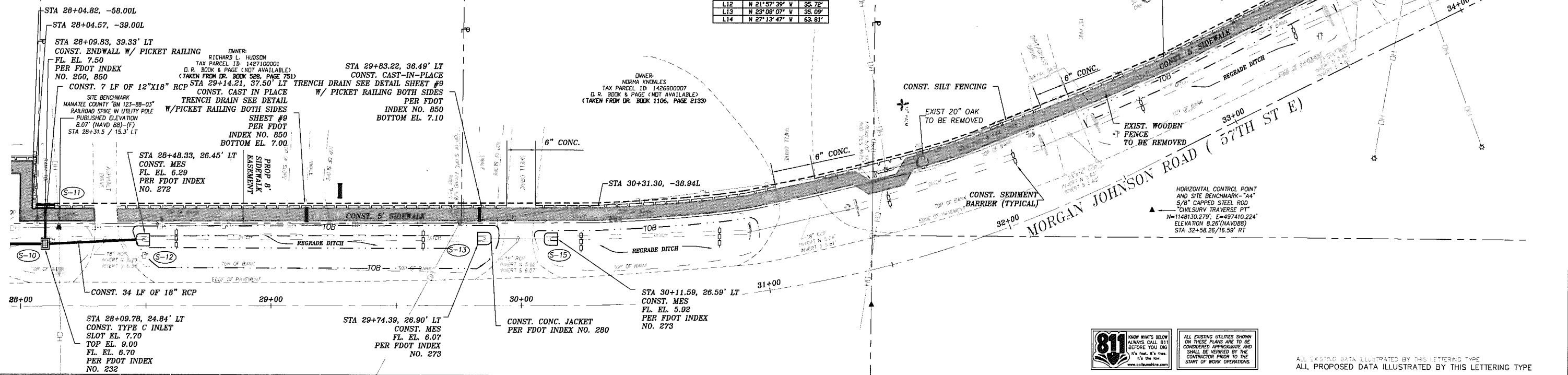
V:\Projects\024 - Manatee County\002 Master Contract 2008-2012\008 - Manatee County - Morgan Johnson Rd Sidewalk\Transportation\Drawings\02402008PRF.dwg, 5/19/2015 3:11:52 PM, Blalsham PDF

MAINTAINED R/W LINE TABLE (C-D)

LINE	BEARING	DISTANCE
L1	N 00°13'22" W	54.90'
L2	N 02°56'40" W	15.62'
L3	N 03°59'43" W	19.34'
L4	N 05°35'07" W	14.60'
L5	N 08°06'21" W	11.10'
L6	N 12°00'54" W	27.64'
L7	N 13°53'30" W	23.14'
L8	N 14°42'06" W	17.59'
L9	N 16°16'08" W	15.32'
L10	N 18°44'34" W	11.89'
L11	N 20°59'51" W	11.99'
L12	N 21°57'39" W	35.72'
L13	N 23°08'07" W	36.09'
L14	N 27°13'47" W	63.81'

OWNER: BRADEN RIVER INDUSTRIES, INC.
TAX PARCEL ID: 111920001
D.R. BOOK 2018, PAGE 940

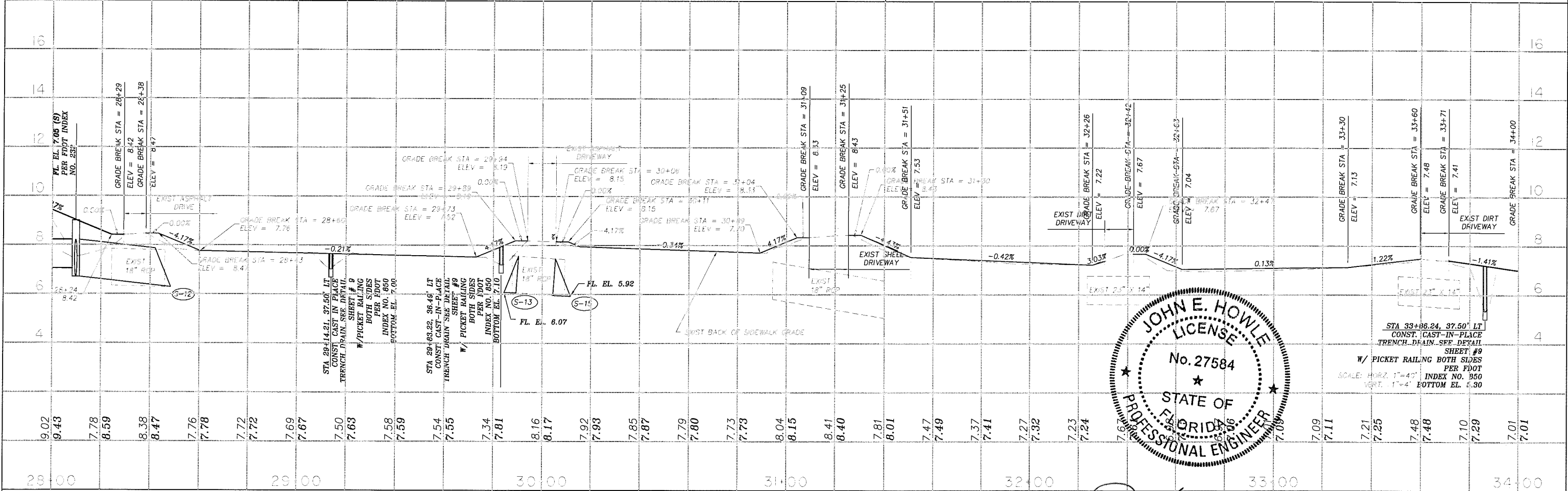
STA 33+86.24, 37.50' LT
CONST. CAST-IN-PLACE
TRENCH DRAIN SEE DETAIL
SHEET #9
W/ PICKET RAILING BOTH SIDES
PER FDOT
INDEX NO. 850
BOTTOM EL.



811 KNOW WHAT'S BELOW
ALWAYS CALL 811
BEFORE YOU DIG
It's free. It's fast.
It's the law.
www.call811.com

ALL EXISTING UTILITIES SHOWN
ON THESE PLANS ARE TO BE
CONSIDERED APPROXIMATE AND
SHALL BE VERIFIED BY THE
CONTRACTOR PRIOR TO THE
START OF WORK OPERATIONS.

ALL EXISTING DATA ILLUSTRATED BY THIS LETTERING TYPE
ALL PROPOSED DATA ILLUSTRATED BY THIS LETTERING TYPE



JOHN E. HOWLE
LICENSE
No. 27584
STATE OF
FLORIDA
PROFESSIONAL ENGINEER

STA 33+86.24, 37.50' LT
CONST. CAST-IN-PLACE
TRENCH DRAIN SEE DETAIL
SHEET #9
W/ PICKET RAILING BOTH SIDES
PER FDOT
INDEX NO. 850
SCALE: HORIZ. 1"=40'
VERT. 1"=4' BOTTOM EL. 5.30

REVISIONS

Date	By	Description

MANATEE COUNTY
PUBLIC WORKS

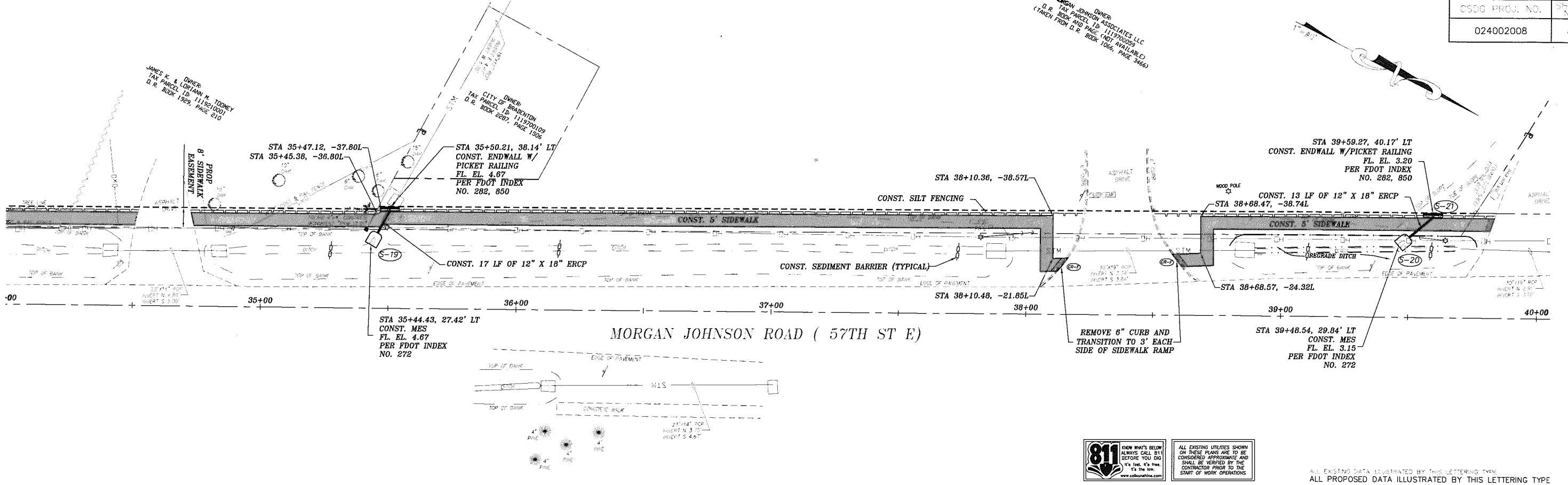


CivilSurv Design Group, Inc.
2355 Diane Field Rd
Suite 7
Lakeland, FL 33811
Tel: 888-884-4771
Certificate of
Authorization
No. 78988

NAME	DATE
DESIGNED BY: RLB	8/10
DRAWN BY: EW	8/10
CHECKED BY: JEH	8/10

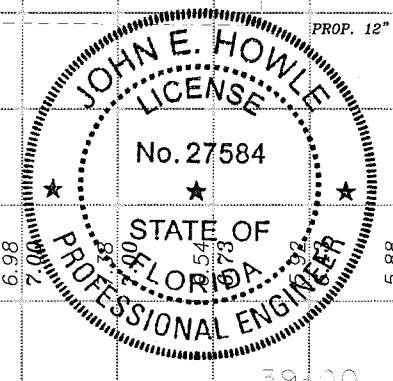
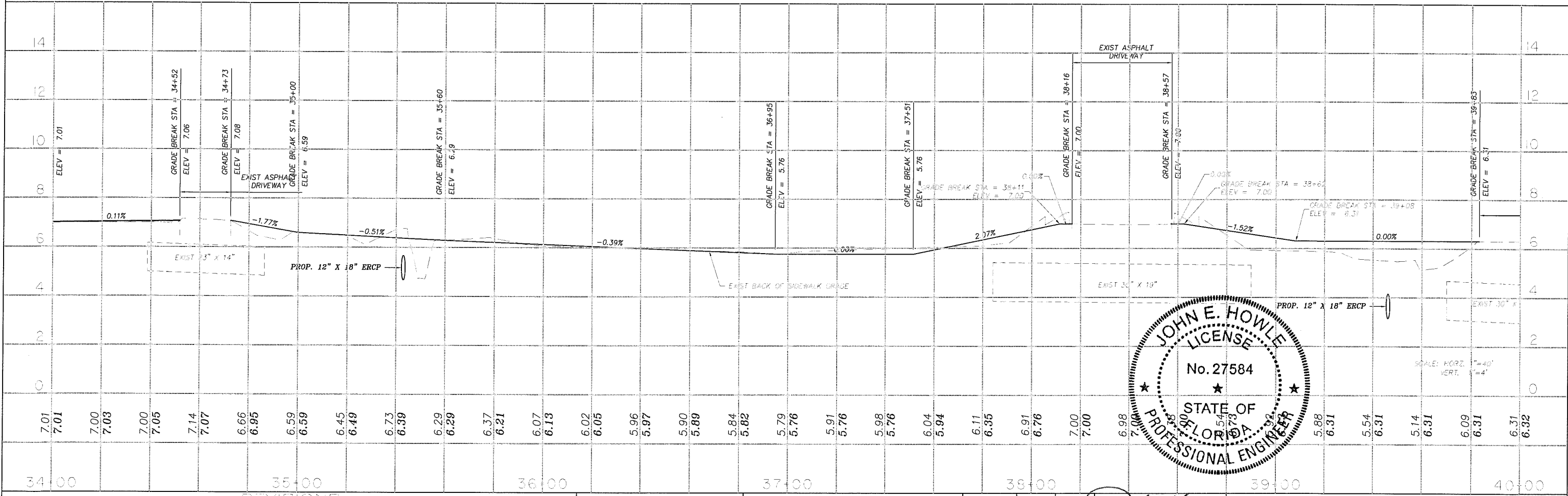
MORGAN JOHNSON SIDEWALK
PLAN & PROFILE SHEET
STA. 28+00 TO STA. 34+00
MANATEE COUNTY, FLORIDA

V:\Projects\024 - Manatee County\002 Master Contract 2008-2012\008 - Manatee County - Morgan Johnson Rd Sidewalk\Transportation\Drawings\024002008Perf.dwg, 7/19/2015 11:21:01 PM, Bluebeam PDF



ALL EXISTING UTILITIES SHOWN ON THESE PLANS ARE TO BE CONSIDERED APPROXIMATE AND SHALL BE VERIFIED BY THE CONTRACTOR PRIOR TO THE START OF WORK OPERATIONS

ALL EXISTING DATA ILLUSTRATED BY THIS LETTERING TYPE
ALL PROPOSED DATA ILLUSTRATED BY THIS LETTERING TYPE



Date	By	Description	Date	By	Description

MANATEE COUNTY PUBLIC WORKS
CSDG Field Book No.:

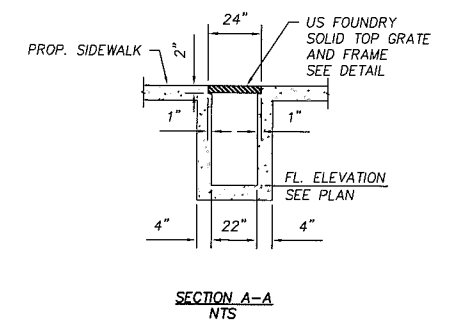
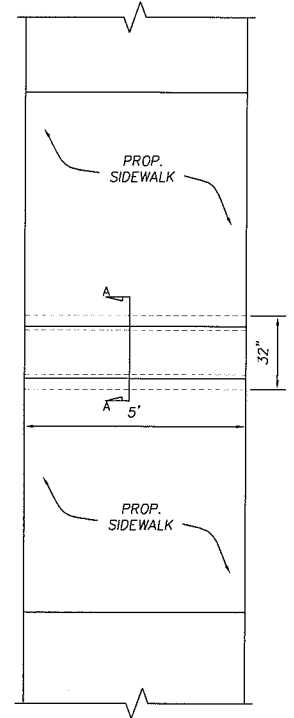
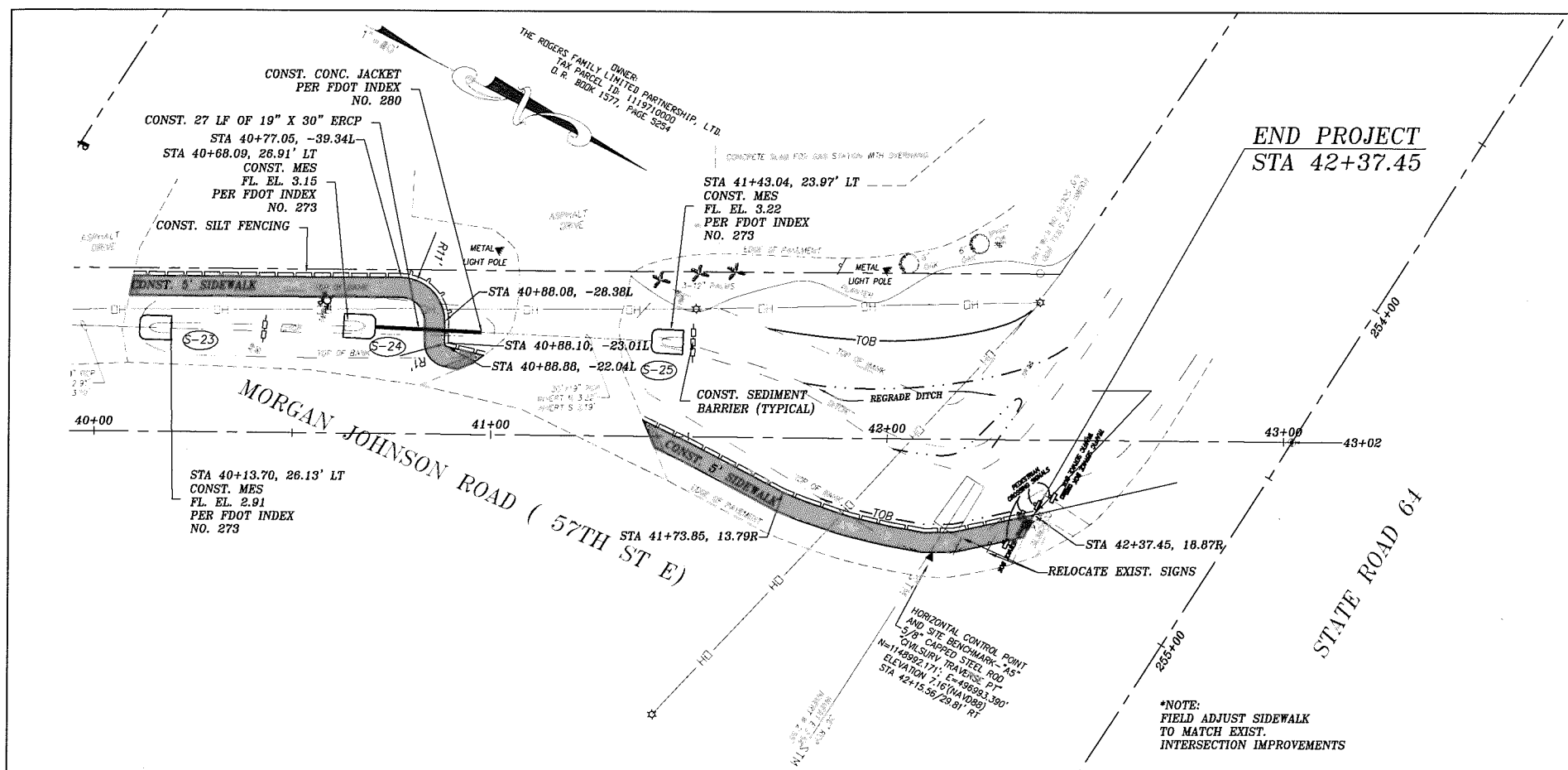


CitySurf Design Group
2515 Orange Field Rd
Suite 7
Orlando, FL 32811
Tel: 853-666-4371

NAME	DATE
DESIGNED BY: RLB	8/10
DRAWN BY: EW	8/10
CHECKED BY: JEH	8/10

MORGAN JOHNSON SIDEWALK
PLAN & PROFILE SHEET
STA. 34+00 TO STA. 40+00
MANATEE COUNTY, FLORIDA

V:\Projects\024 - Manatee County\002 Master Contract 2008-2012\008 - Manatee County - Morgan Johnson Rd Sidewalk\Transportation\Drawings\024002008PRF.dwg, 8/19/2015 3:12:07 PM, Bluebeam PDF

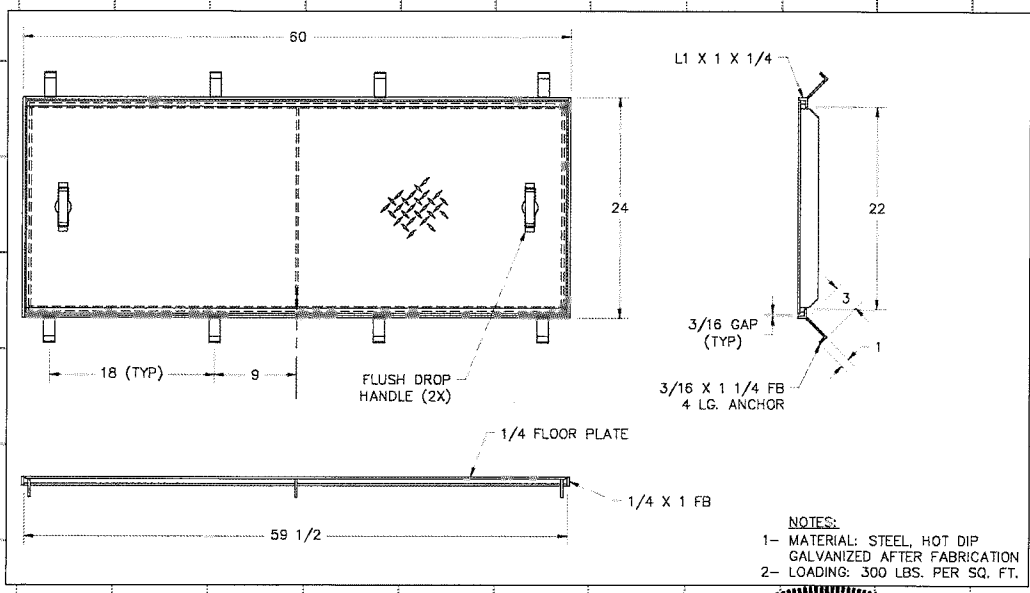
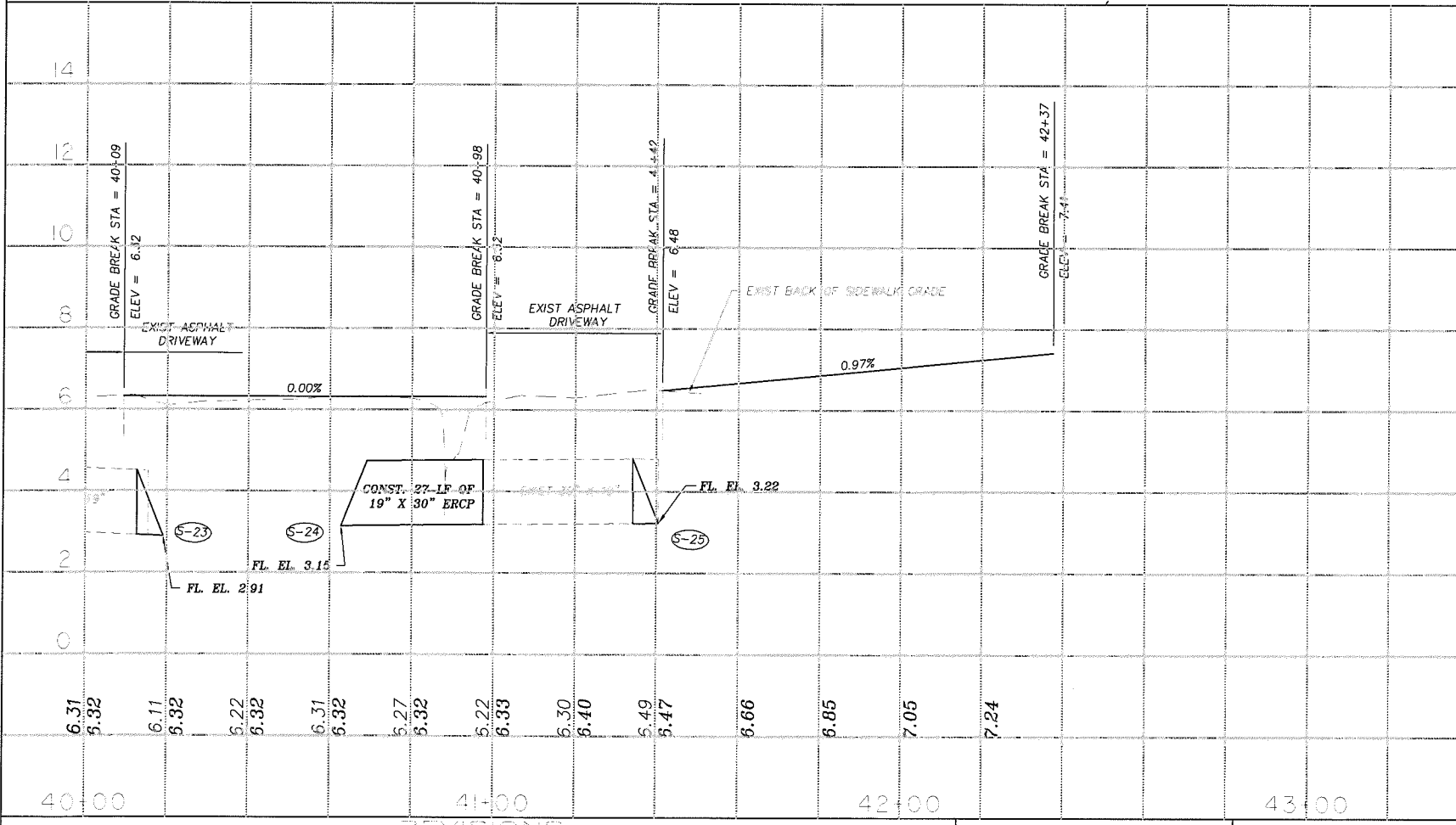


*NOTE:
FIELD ADJUST SIDEWALK
TO MATCH EXIST.
INTERSECTION IMPROVEMENTS

TRENCH DRAIN
NTS

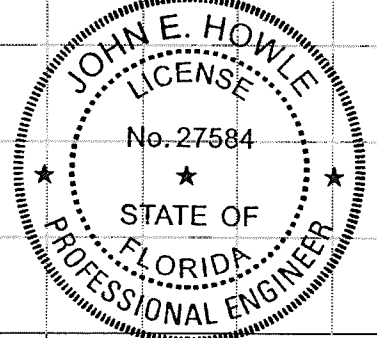


ALL EXISTING DATA ILLUSTRATED BY THIS LETTERING TYPE
ALL PROPOSED DATA ILLUSTRATED BY THIS LETTERING TYPE



NOTES:
1- MATERIAL: STEEL, HOT DIP GALVANIZED AFTER FABRICATION
2- LOADING: 300 LBS. PER SQ. FT.

SOLID TOP GRATE
DETAIL
NTS



SCALE: HORIZ. 1"=40'
VERT. 1"=4'

Date	By	Description	Date	By	Description

MANATEE COUNTY
PUBLIC WORKS



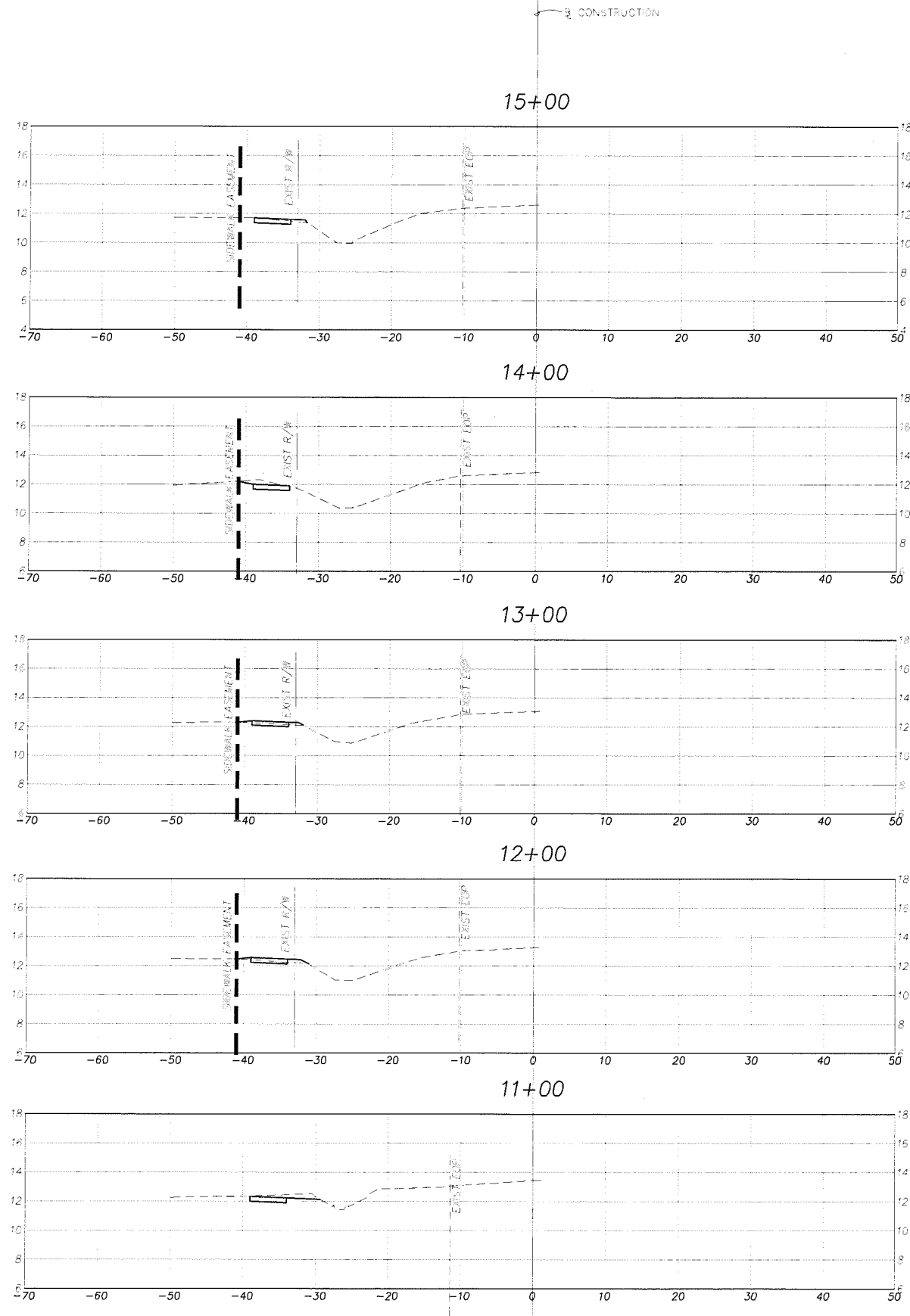
Civil Survey Group, Inc.
2626 Stone Field Rd.
Suite 7
Lakeland, FL 33811
Tel: 863-666-4771

NAME	DATE
DESIGNED BY: RLB	8/10
DRAWN BY: EW	8/10
CHECKED BY: JEH	8/10

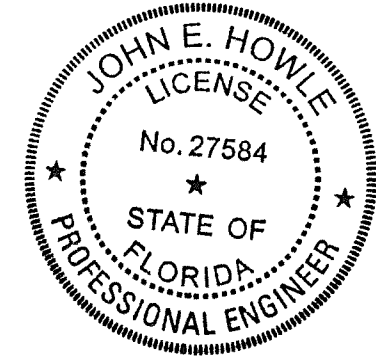
DATE: 3/27/15

MORGAN JOHNSON SIDEWALK
PLAN & PROFILE SHEET
STA. 40+00 TO STA. 43+02
MANATEE COUNTY, FLORIDA

V:\Projects\1024 - Manatee County\1002 Master Contract 2009-2012\1008 - Manatee County - Morgan Johnson Rd Sidewalk\Transportation\Drawings\1024002008PRF.dwg, 9/19/2015 3:21:14 PM, Bledsoe.dwg



EARTHWORK			
RDWY EXC.		FILL	
A	V	A	V
1.55		0.23	
7.59		0.43	
2.75		0	
6.67		0.83	
0.85		0.45	
2.88		2.06	
0.76		0.66	
7.74		1.22	
3.42		0	
0.13		0	



1" = 20' HORIZ.
1" = 10' VERT.

REVISIONS							
Note	By	Description	Date	By	Description	Date	By

MANATEE COUNTY
PUBLIC WORKS

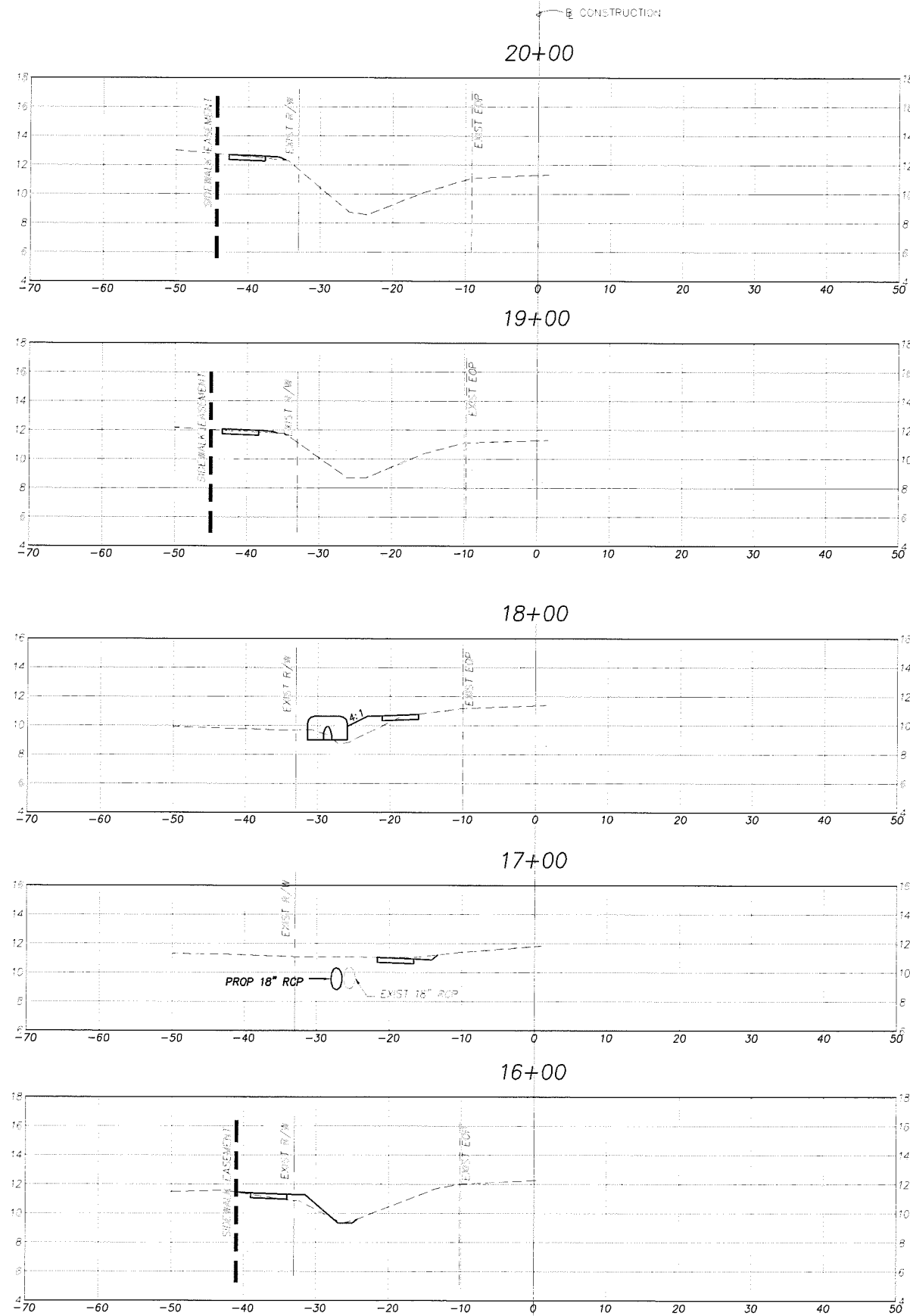


CitySur Design Group, Inc.
2525 Drane Field Rd
Suite 7
Lakeland, FL 33811
Tel: 888-888-4771

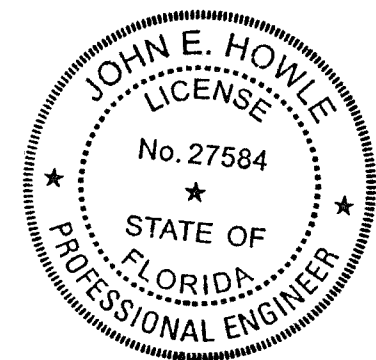
DESIGNED BY	JEH	8/10
DRAWN BY	EW	8/10
CHECKED BY	JEH	8/10

Howle
3/23/11

MORGAN JOHNSON SIDEWALK
CROSS SECTIONS
STA. 11+00 TO STA. 15+00
MANATEE COUNTY, FLORIDA



EARTHWORK			
ROWY EXC		FILL	
A	V	A	V
1.33		0.40	
	4.78		1.25
1.25		0.28	
	14.78		5.02
6.73		2.43	
	17.22		4.50
2.58		0	
	6.07		4.52
0.71		2.44	
	3.91		4.94



1" = 20' HORIZ.
1" = 10' VERT.

REVISIONS					
Date	By	Description	Date	By	Description

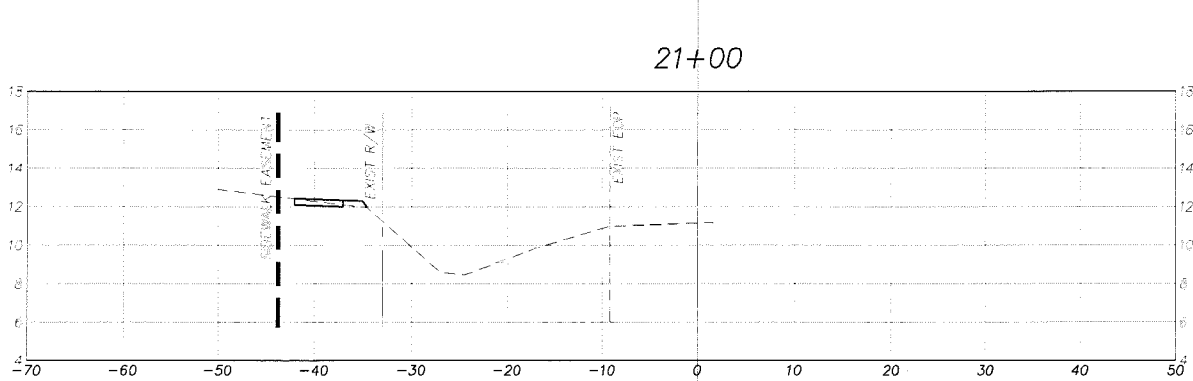
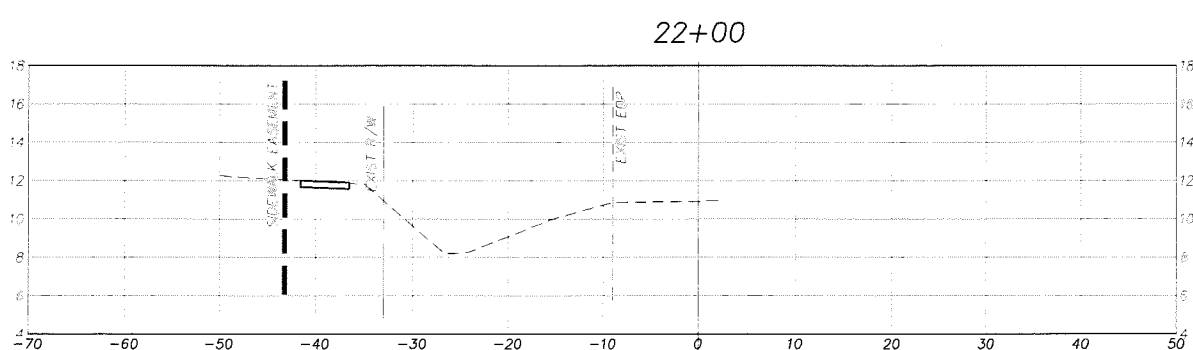
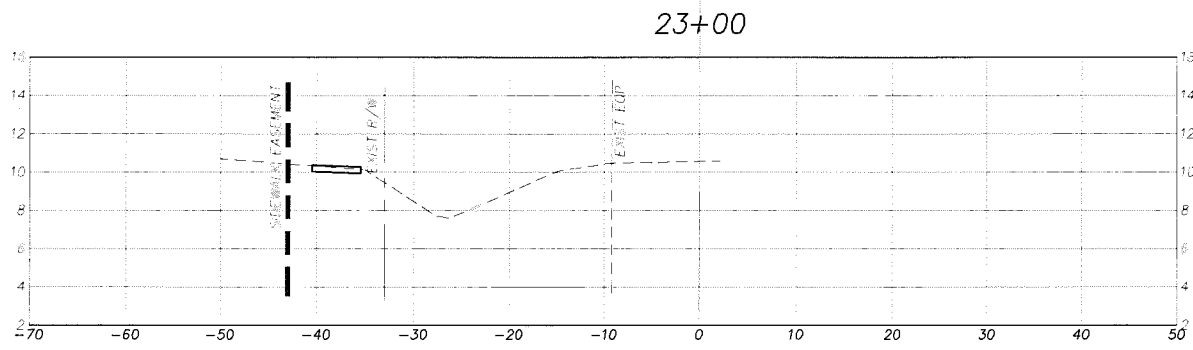
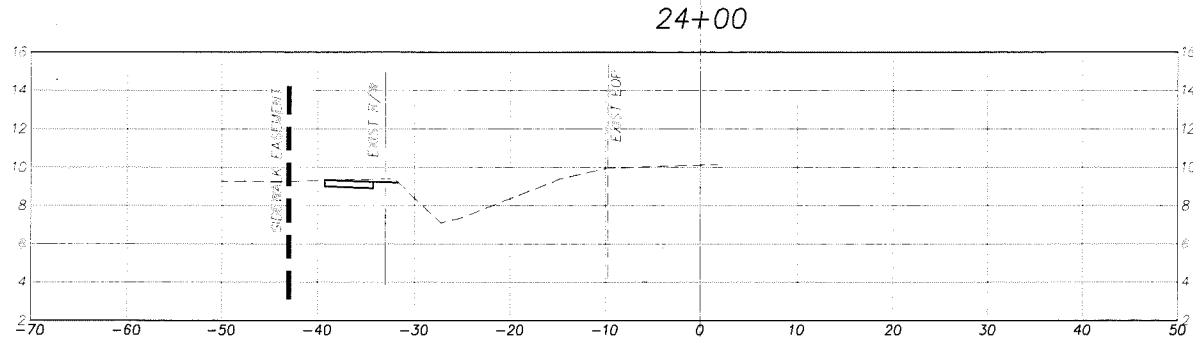
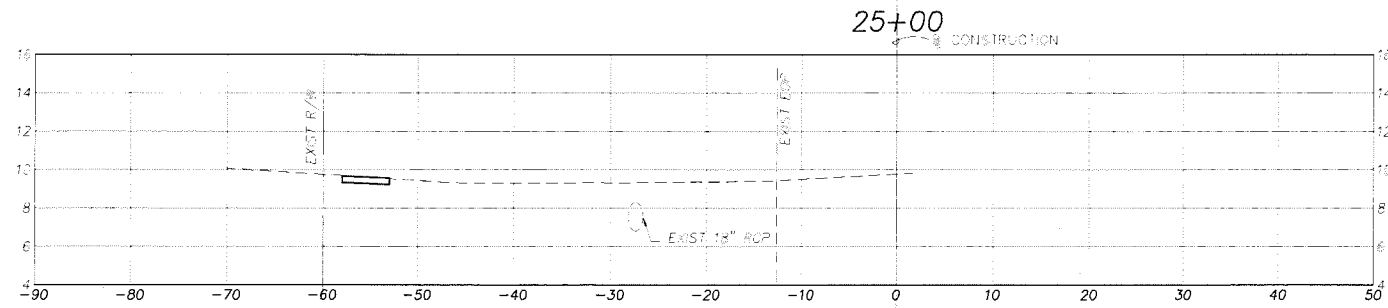
MANATEE COUNTY
PUBLIC WORKS



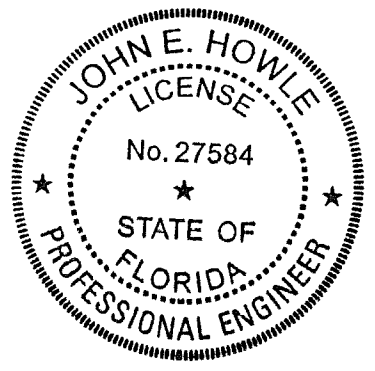
Survey Design Group, Inc.
2015 (zone file No. 1)
Site #
Lakeland, FL 33811
Tel: 888-888-4771

DESIGNED BY	JEH	DATE	8/10
DRAWN BY	EW	DATE	8/10
CHECKED BY	JEH	DATE	8/10

MORGAN JOHNSON SIDEWALK
CROSS SECTIONS
STA. 16+00 TO STA. 20+00
MANATEE COUNTY, FLORIDA



EARTHWORK				
STATION	EXC.		FILL	
	A	V	A	V
25+00	1.65	0	0	0
24+00	7.56	0	0	0
23+00	2.43	0	0	0
22+00	6.98	0	0	0
21+00	1.34	0	0	0
	5.35	0	0	0
	1.55	0	0	0
	4.72	0	1.19	0
	10.0	0	0.64	0
	4.31	0	1.83	0



1" = 20' HORIZ.
1" = 10' VERT.

REVISIONS

Date	By	Description	Date	By	Description

MANATEE COUNTY
PUBLIC WORKS

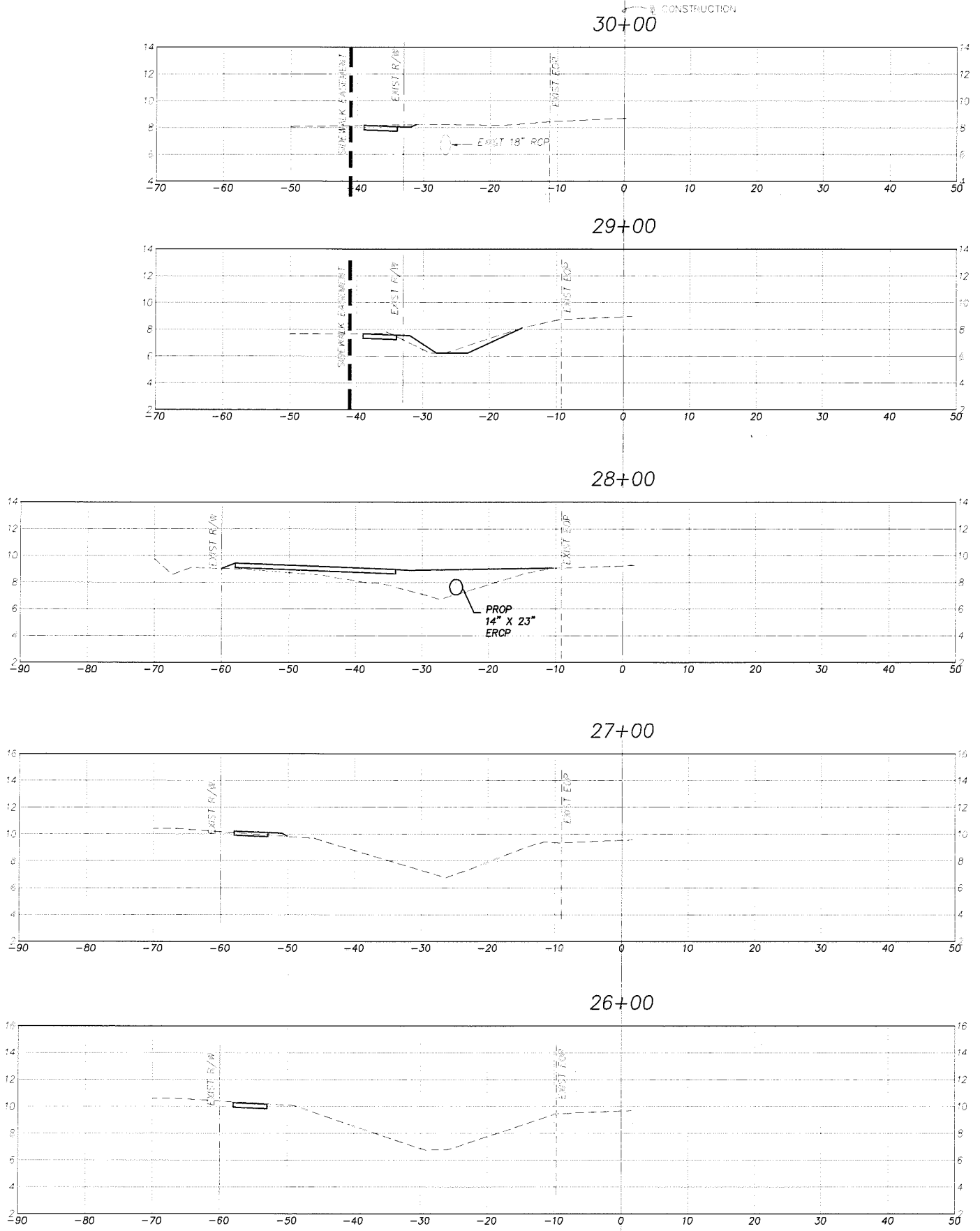


CivilSurf Design Group, Inc.
2525 Bruce Field Rd.
Lakeland, FL 33811
Tel: 888-846-4771
Certificate of Authorization
No. 000008

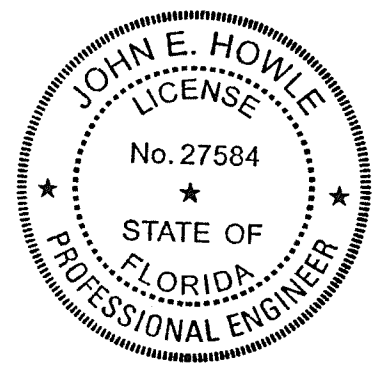
NAME	DATE
DESIGNED BY: JEH	8/10
DRAWN BY: EW	8/10
CHECKED BY: JEH	8/10

John E. Howle
3/27/15

MORGAN JOHNSON SIDEWALK
CROSS SECTIONS
STA. 21+00 TO STA. 25+00
MANATEE COUNTY, FLORIDA



EARTHWORK			
RDWAY EXC		FILL	
A	V	A	V
2.31		0	
14.24		3.8	
5.38		2.05	
9.98		77.2	
0		99.6	
1.58		74.3	
0.88		0.50	
4.65		0.93	
1.65		0	
6.11		0	



1" = 20' HORIZ.
1" = 10' VERT.

V:\Projects\024 - Manatee County\002 Master Contract 2008 2012\008 - Manatee County - Morgan Johnson Rd Sidewalk\Drawings\024002008\SEC.dwg, 13, 1/8/2015 2:42:32 PM, Adobe PDF

REVISIONS					
Date	By	Description	Date	By	Description

MANATEE COUNTY
PUBLIC WORKS

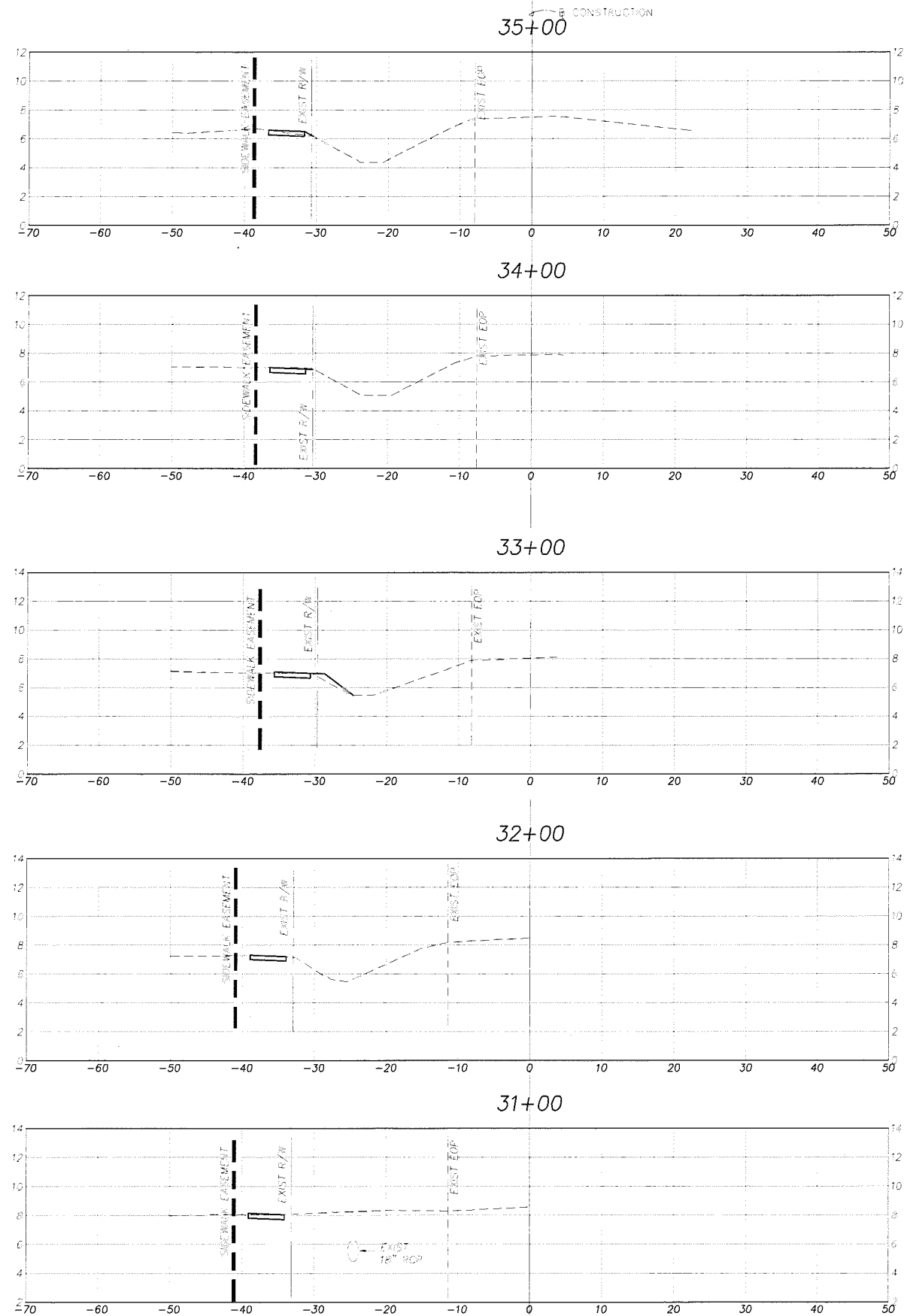


CIVILSURVY Design Group, Inc.
 2525 Grace Field Rd.
 Suite 7
 Orlando, FL 32811
 Tel: 888-644-4371

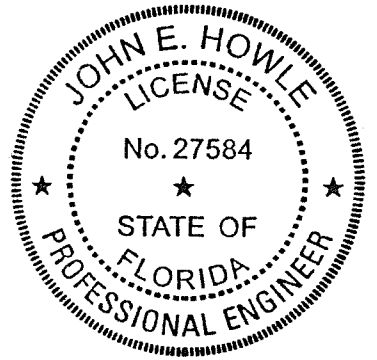
DESIGNED BY	DATE
JEH	8/10
DRAWN BY	DATE
EW	8/10
CHECKED BY	DATE
JEH	8/10

Signature: *[Handwritten Signature]*
 Date: 8/10/15

MORGAN JOHNSON SIDEWALK
CROSS SECTIONS
 STA. 26+00 TO STA. 30+00
 MANATEE COUNTY, FLORIDA



EARTHWORK			
RDWAY EXC		FILL	
A	V	A	V
104	016		
552	030		
194	0		
605	263		
165	142		
811	263		
165	0		
552	0		
133	000		
1674	0		



1" = 20' HORIZ.
1" = 10' VERT.

REVISIONS					
Date	By	Description	Date	By	Description

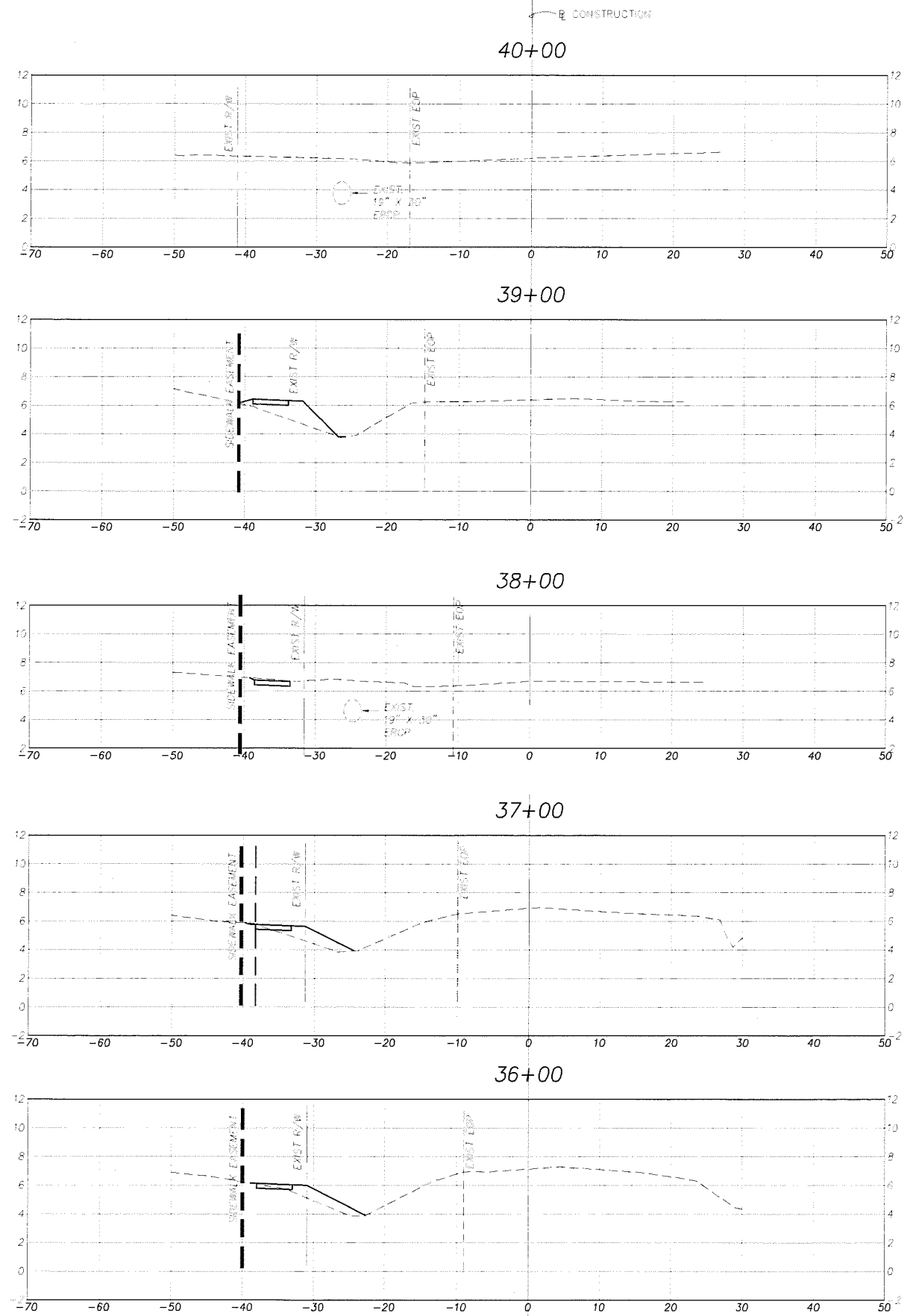
MANATEE COUNTY
PUBLIC WORKS



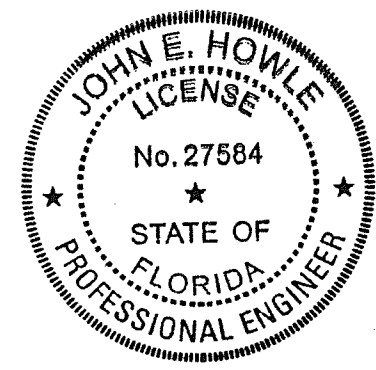
One Stop Design Group, Inc.
2525 Drive Plaza Rd
Suite 100
Largo, FL 33011
Tel: 813-688-4771

NAME	DATE
DESIGNED BY: JEH	8/10
DRAWN BY: EW	8/10
CHECKED BY: JEH	8/10

MORGAN JOHNSON SIDEWALK
CROSS SECTIONS
STA. 31+00 TO STA. 35+00
MANATEE COUNTY, FLORIDA



EARTHWORK			
RDWY EXC		FILL	
A	V	A	V
0	0	0	0
6.04	19.3		
0	10.41		
7.19	19.3		
2.25	0		
5.13	12.31		
0.52	6.65		
2.11	24.7		
0.62	8.70		
3.07	12.7		



1" = 20' HORIZ.
1" = 10' VERT.

REVISIONS					
Date	By	Description	Date	By	Description

MANATEE COUNTY
PUBLIC WORKS



CivilSurv Design Group, Inc.
2520 Orange Arms Rd.
Suite 7
Lakeland, FL 33811
Tel: 861-643-4701

NAME	DATE
DESIGNED BY: JEH	8/10
DRAWN BY: EW	8/10
CHECKED BY: JEH	8/10

John E. Howle
3/23/11

MORGAN JOHNSON SIDEWALK
CROSS SECTIONS
STA. 36+00 TO STA. 40+00
MANATEE COUNTY, FLORIDA

