

[illegible]

JAMES STOCKWELL, P.E.
FLORIDA PAID 1/1/98
JAMES STOCKWELL
LICENSE
No. 67198
10/17/14
STATE OF
FLORIDA
SIGNATURE ENGINEER

PLAN

STAINLESS STEEL 3" DIA. SCH. 40 TYP.

ALUMINUM OR STAINLESS STEEL UNISTRUT CHANNEL OR APPROVED EQUAL

ALARM

CONTROL PANEL

UNISTRUT

HORN

GENERATOR RECEPTACLE

ANTENNA

SITE LIGHT

ELECTRIC METER

FUSED SAFETY SWITCH

LIGHTNING ARRESTOR

SECTION

60'

ANTENNA

ANTENNA MAST

CONTINUOUS LENGTH OF COAXIAL CABLE FROM ANTENNA TO CONTROL PANEL

GROUND CLAMP W/#6 BARE COPPER WIRE

TOP OF SLAB 2" ABOVE GRADE (FINISH GRADE (SHELL))

CONCRETE SUPPORT 3000 P.S.I. (TYP.) (POURED AGAINST UNDISTURBED SOIL)

5/8" DIA. x 10' LONG COPPERWELD GROUND ROD

CONDUITS TO PUMPING STA. (SEE SITE PLAN)

CONDUIT TO UTILITY POWER (SEE SITE PLAN)

CONTROL PANEL

FUSED SAFETY SWITCH

3/4" CONDUIT TO PANEL

ELECTRIC METER

STAINLESS STEEL 3" DIA. SCH. 40 TYP.

ALUMINUM OR STAINLESS STEEL 12GA. 1-5/8" CHANNEL UNISTRUT, B-LINE OR EQUAL

5 MIN.

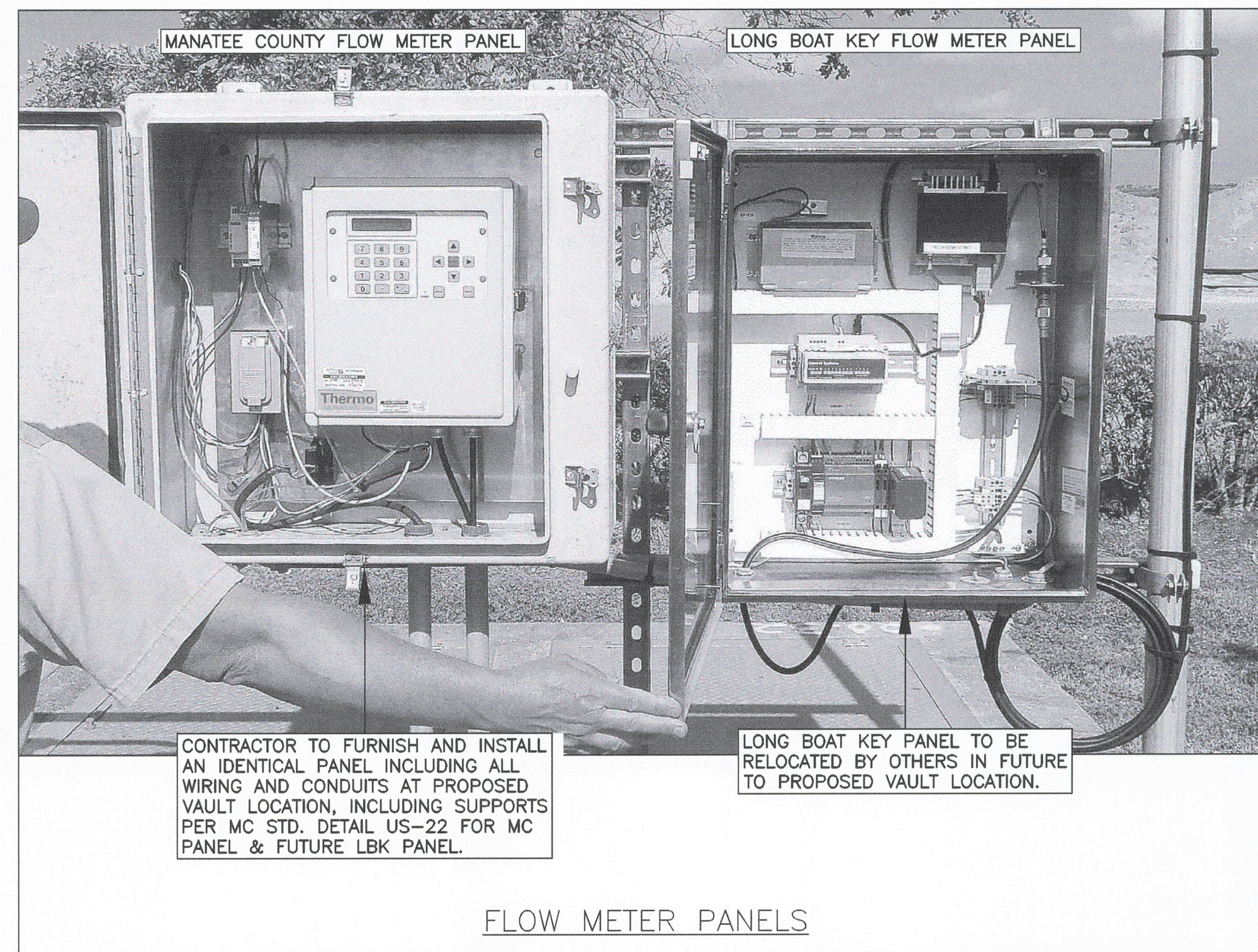
GROUND CLAMP W/#6 BARE COPPER WIRE TO CONTROL PANEL GROUND BUS

2'-5" MIN.

12" MIN.

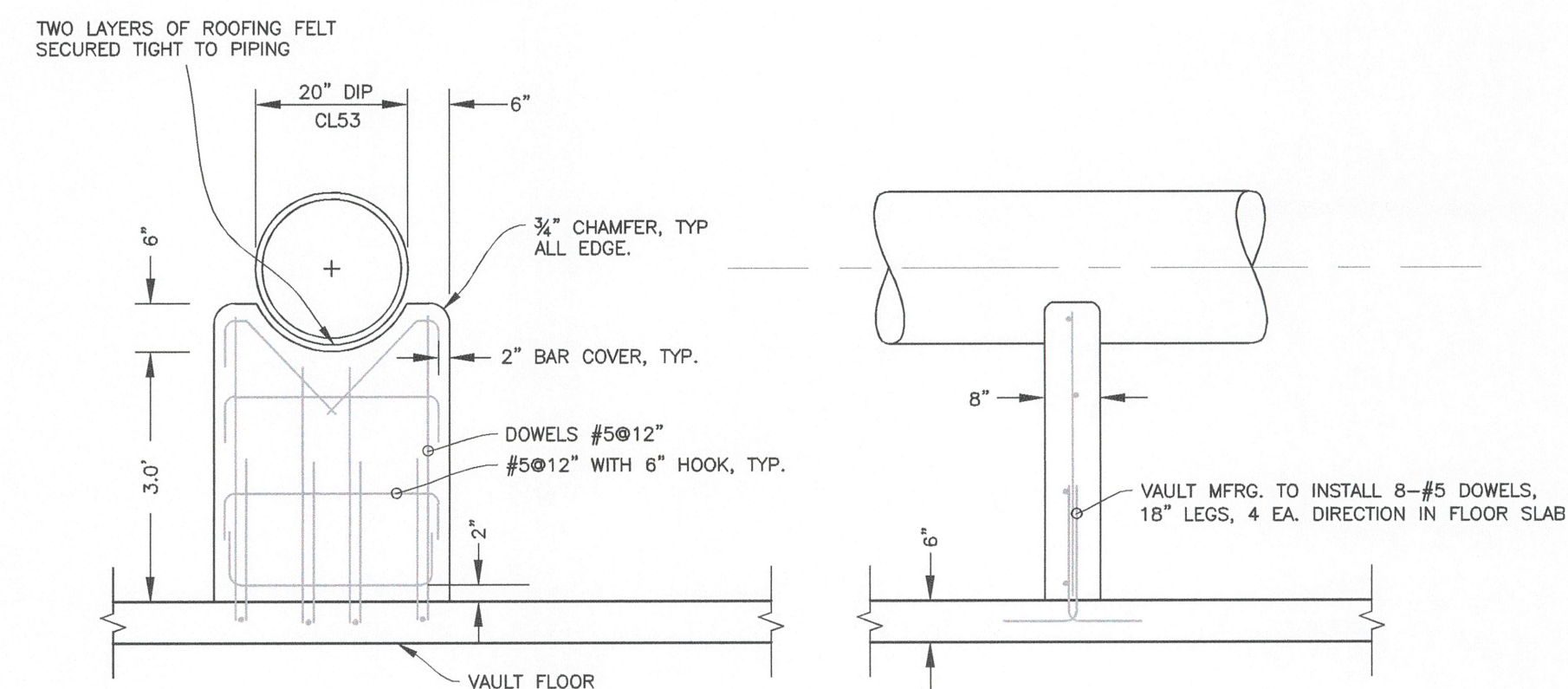
5/8" DIA. x 10' LONG COPPERWELD GROUND ROD

TYPICAL SERVICE ENTRANCE STRUCTURE



FLOW METER PANELS

1. ALL REBAR SHALL BE ASTM A615 Y.S. 60KSI, DEFORMED BARS. LAP ALL BARS MIN. 18" UNLESS NOTED OTHERWISE.
2. CONC. SHALL COMPLY WITH ACI318, COMPRESSIVE STRENGTH 4000 PSI @ 28 DAYS.



PIPE SUPPORT DETAIL

NOT IN CONTRACT-BY OTHERS