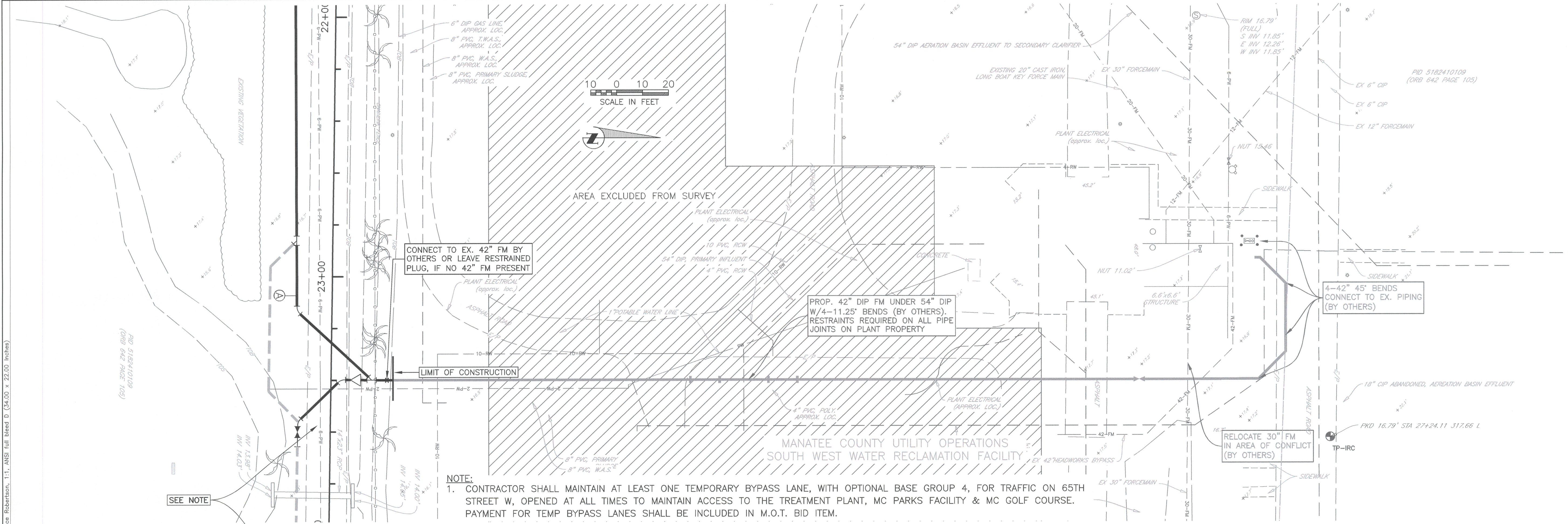


FORCE MAIN 27-A
FROM 51ST ST. W. TO THE SWWRF
PLAN & PROFILE



SEE NOTE

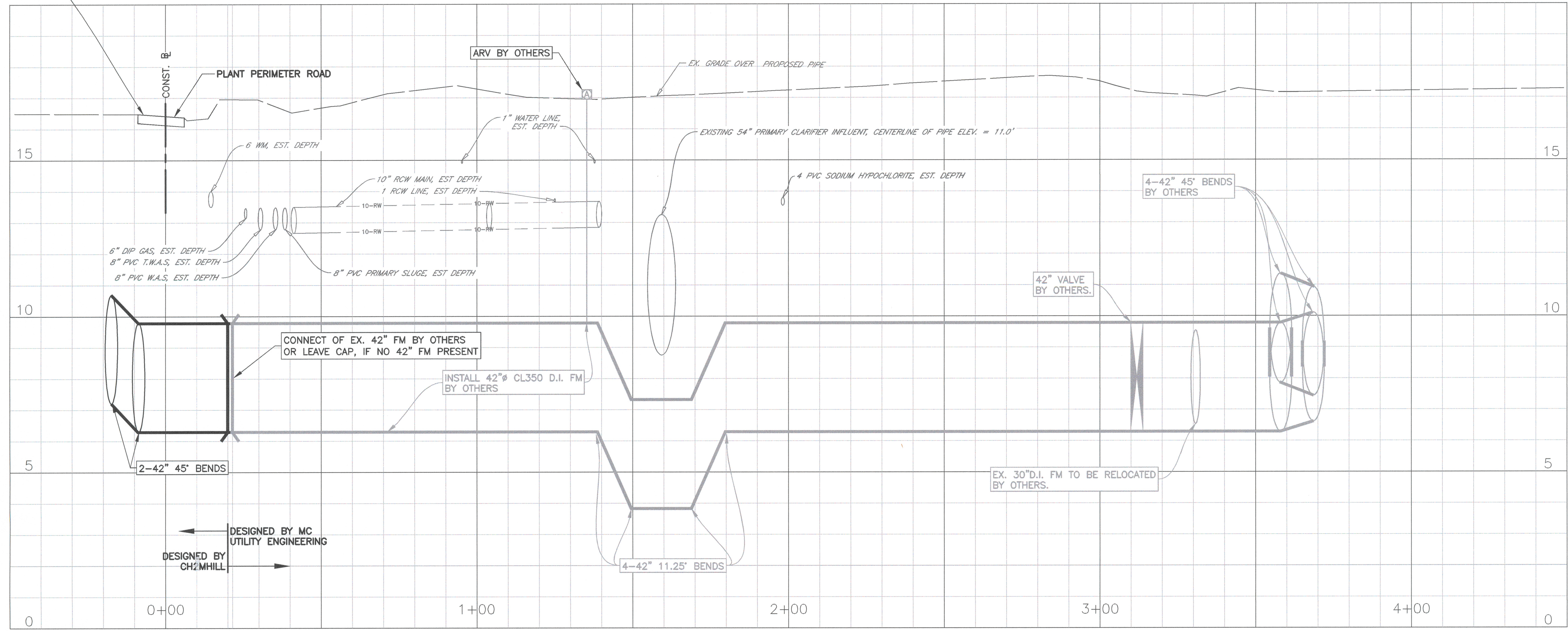
CONNECT TO EX. 42" FM BY OTHERS OR LEAVE RESTRAINED PLUG, IF NO 42" FM PRESENT

PROP. 42" DIP FM UNDER 54" DIP W/4-11.25" BENDS (BY OTHERS). RESTRAINTS REQUIRED ON ALL PIPE JOINTS ON PLANT PROPERTY

4-42" 45° BENDS CONNECT TO EX. PIPING (BY OTHERS)

RELOCATE 30" FM IN AREA OF CONFLICT (BY OTHERS)

NOTE:
1. CONTRACTOR SHALL MAINTAIN AT LEAST ONE TEMPORARY BYPASS LANE, WITH OPTIONAL BASE GROUP 4, FOR TRAFFIC ON 65TH STREET W, OPENED AT ALL TIMES TO MAINTAIN ACCESS TO THE TREATMENT PLANT, MC PARKS FACILITY & MC GOLF COURSE. PAYMENT FOR TEMP BYPASS LANES SHALL BE INCLUDED IN M.O.T. BID ITEM.



DESIGNED BY CH2MHILL
DESIGNED BY MC UTILITY ENGINEERING

OFF SET DISTANCE FROM BASELINE

NO.	REVISION DESCRIPTION	BY	DATE

PROJECT #	406-6082980
SURVEY #	3825
SEC./TWN./RGE	16,17,18/35/17
VERT. SCALE	1"=2'
HORZ. SCALE	1"=20'
BY	DATE
SURVEYED	LSF/HYATT 2001/2012
DESIGNED	LSF/JS 2002/2013
DRAWN	BLR 03/2013
CHECKED	JS 03/2013

JAMES STOCKWELL, P.E.
FLORIDA PROFESSIONAL ENGINEER
NO. 1167198
DATE: 03/2013
SIGNATURE: [Signature]

COPYRIGHT 2010 MANATEE COUNTY GOVERNMENT. S:\P\W\Engineering\Share\JBI Eng Design\PROJ\3-SAN SWR FM 27-A.dwg, 9/25/2014 8:13 AM Bruce Robertson, 1:1, ANSI full bleed D (34.00 x 22.00 inches)