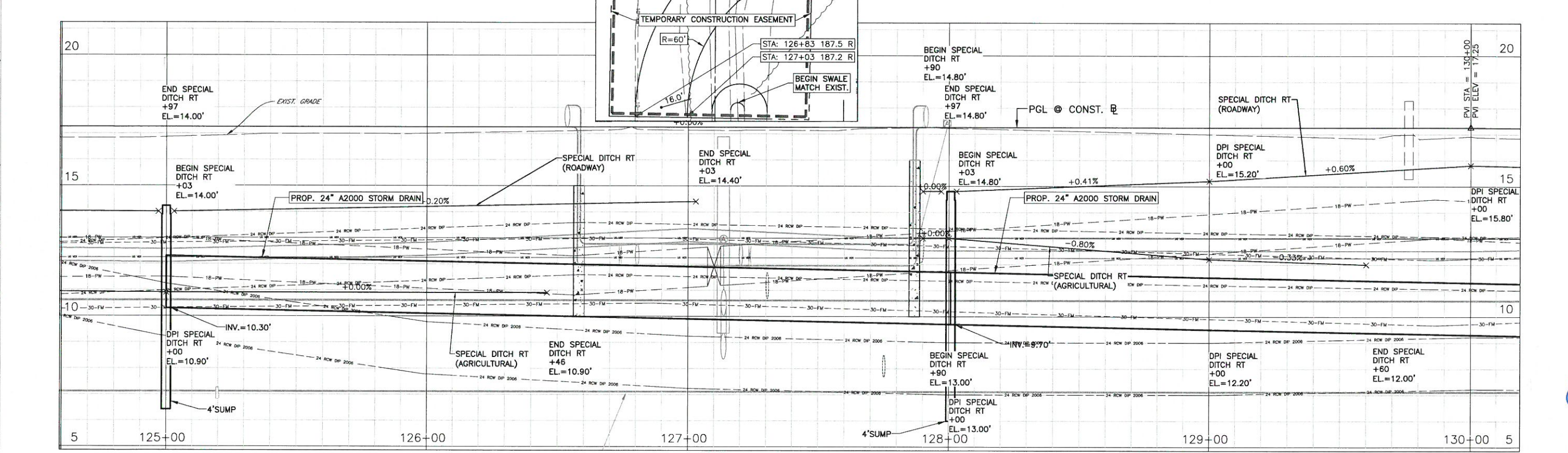
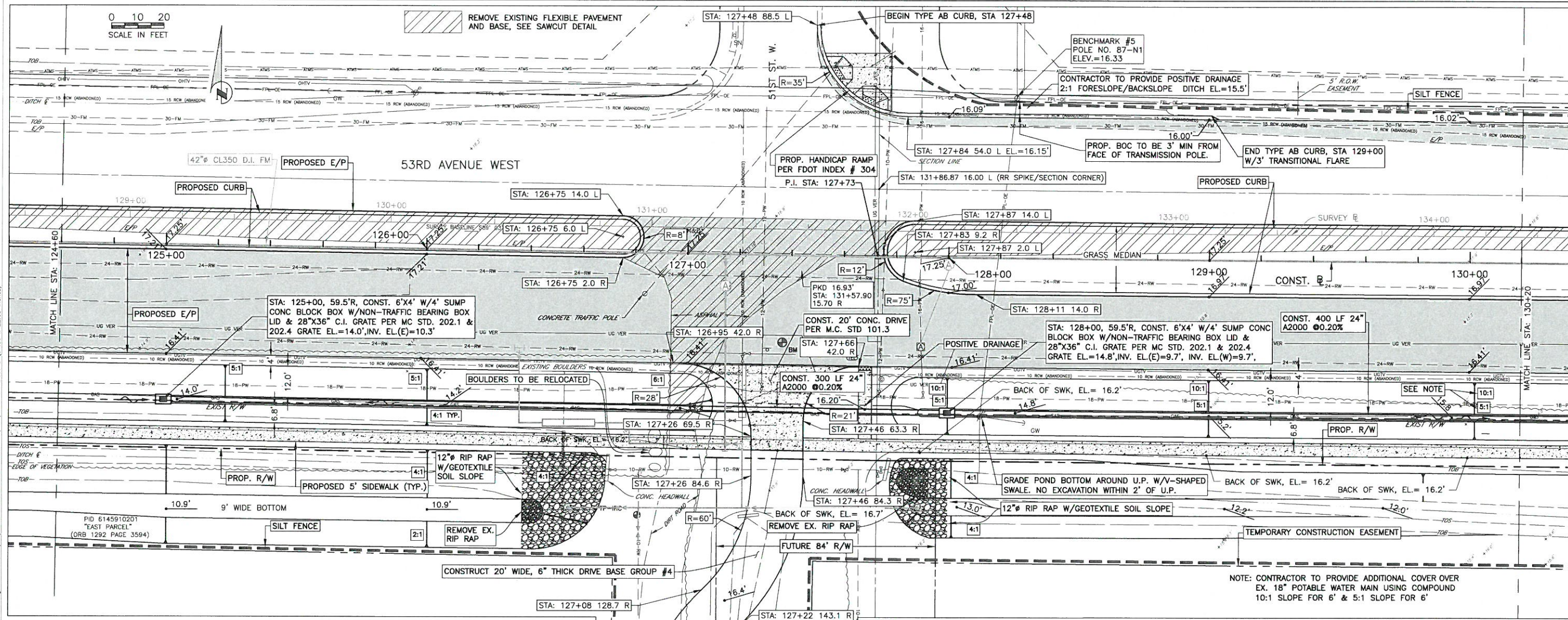


**53RD AVENUE WEST  
43RD ST. W. TO ROUNDABOUT  
ROADWAY PLAN & PROFILE**



NO.	REVISION DESCRIPTION	BY	DATE

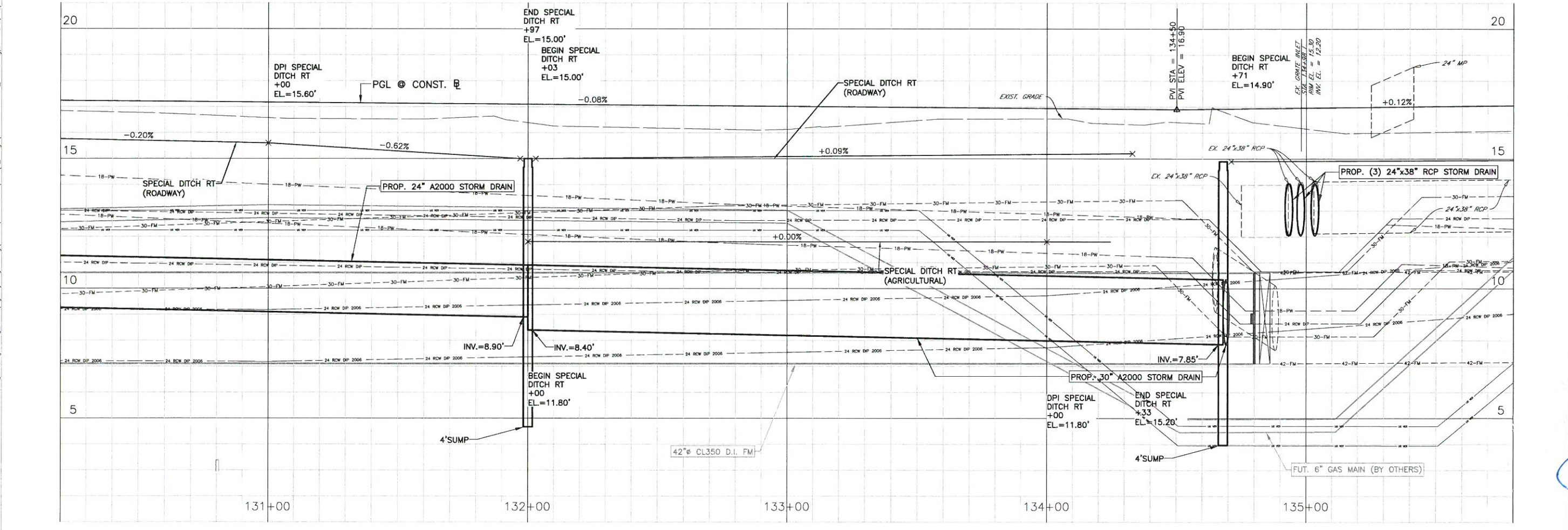
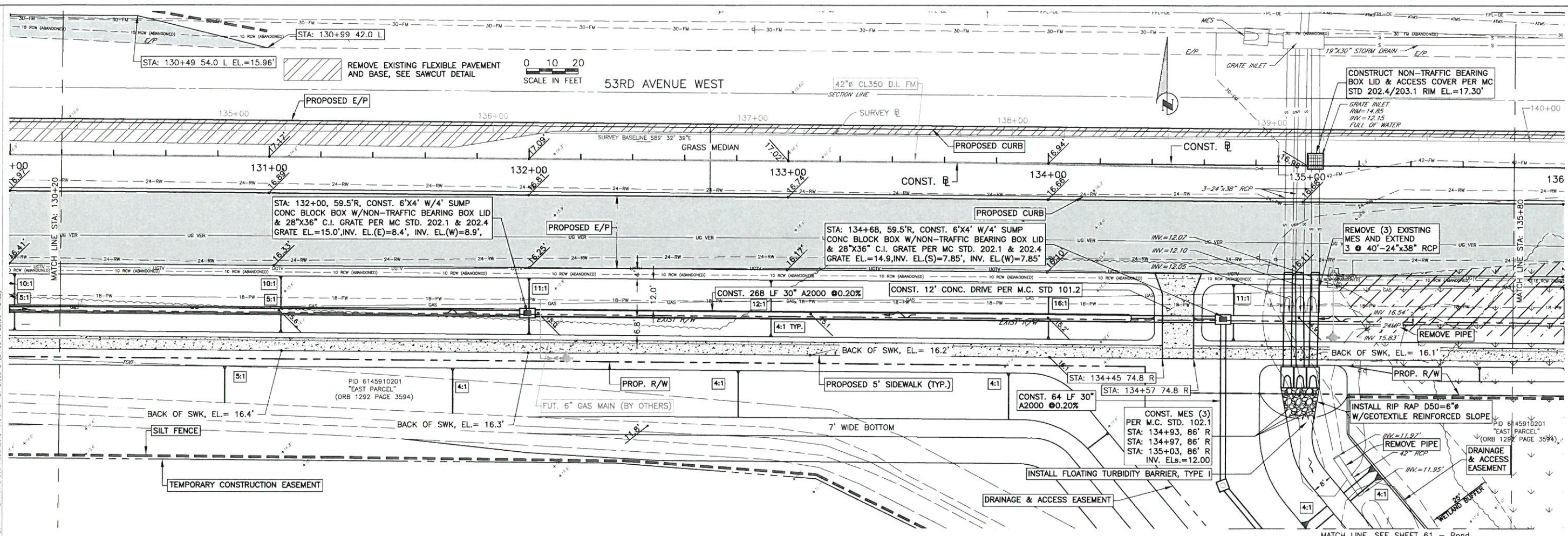
PROJECT #	383-6082960
SURVEY #	3825
SEC./TWN./RGE	16,17,18/35/17
VERT. SCALE	1"=2'
HORIZ. SCALE	1"=20'
SURVEYED	BY: HYATT/LSF DATE: 2001/2012
DESIGNED	LSF/JP DATE: 2001/2012
DRAWN	BLR DATE: 10/2012
CHECKED	CLM DATE: 02/2013

JOHN KENNEDY PARI, P.E.  
FLORIDA P.E. # 56768

*John Pari*  
10/20/14  
Signature & Date

COPYRIGHT 2010 MANATEE COUNTY GOVERNMENT  
 s:\pwr\_eng\engineering\shores\highway\_engineering\ROADS\53rd Ave W\Plan\_Profile.dwg  
 ROAD: 10/17/2014 11:25 AM Bruce Robertson, I.T. ANS: Full sized D (34.00 x 22.00 inches)  
 PID 6145910201 "EAST PARCEL" (ORB 1292 PAGE 3594)

**53RD AVENUE WEST  
43RD ST. W. TO ROUNDABOUT  
ROADWAY PLAN & PROFILE**



NO.	REVISION DESCRIPTION	BY	DATE

PROJECT #	383-6082960
SURVEY #	3825
SEC./TWN./RGE	16,17,18/35/17
VERT. SCALE	1"=2'
HORZ. SCALE	1"=20'

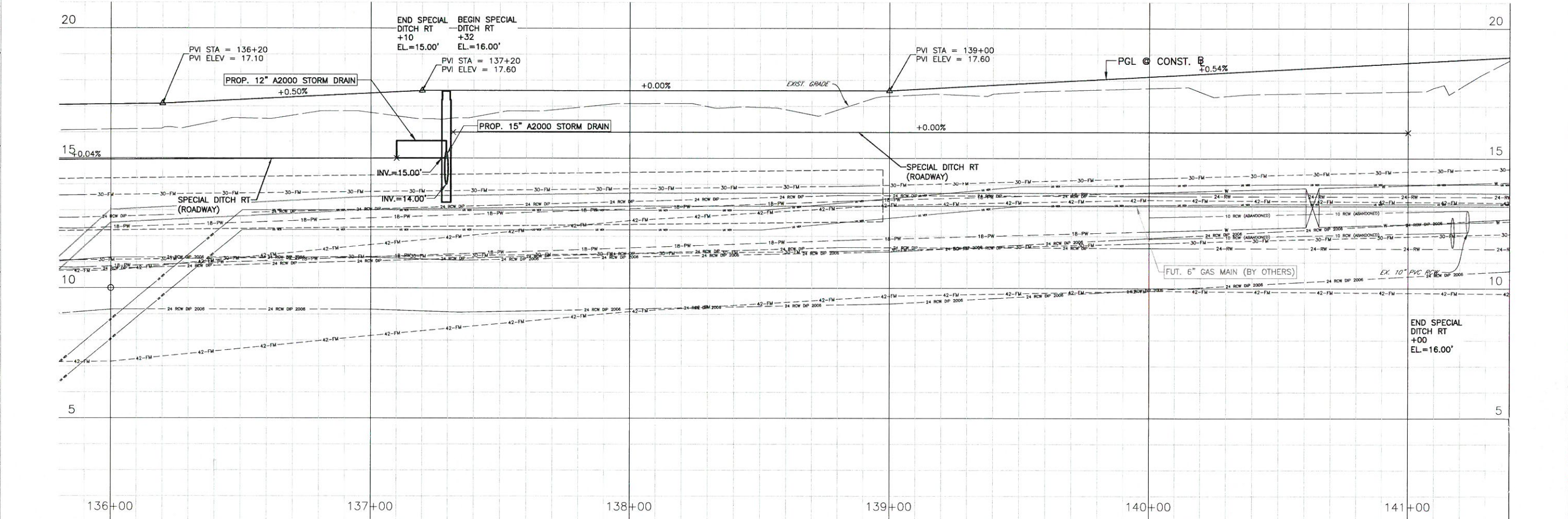
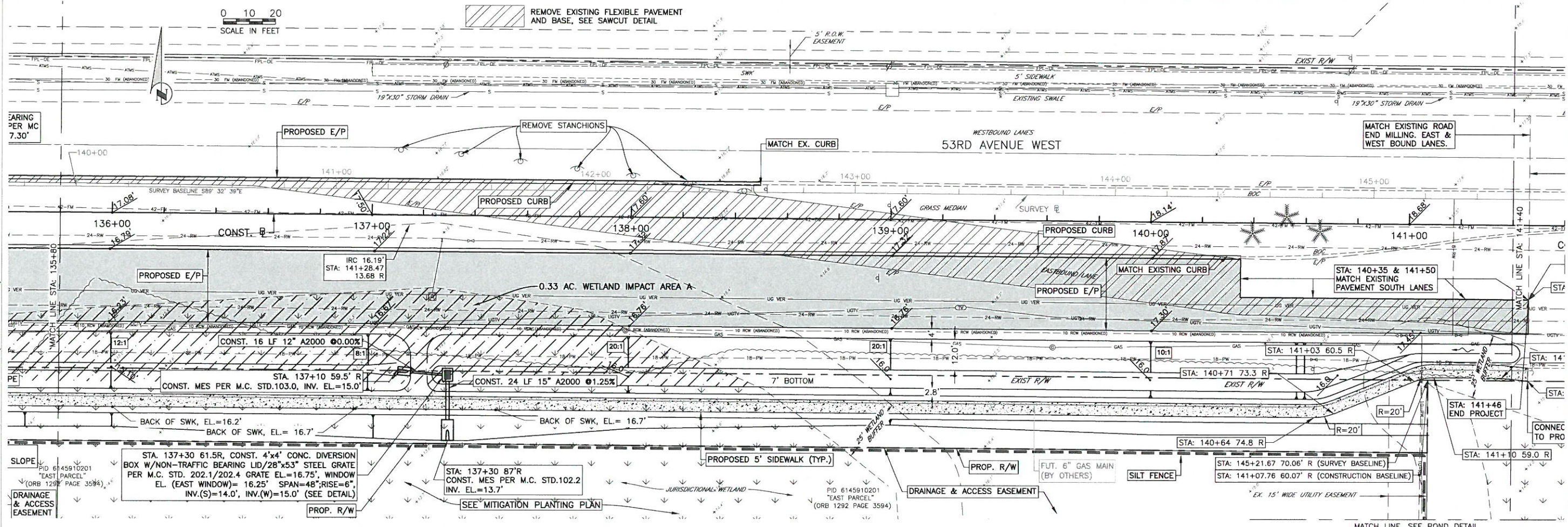
SURVEYED	BY	DATE
DESIGNED	LSF/JP	2001/2012
DRAWN	DLR	10/2012
CHECKED	CLM	02/2013

JOHN KENNEDY PARI, P.E.  
FLORIDA P.E. # 56368

*John Parri*  
10/20/14  
Signature & Date

COPYRIGHT 2010 MANATEE COUNTY GOVERNMENT  
 I:\paved\_engineering\shore\highway\_engineering\ROADS\53rd Ave W\Plan\_Profile.dwg,21 ROAD, 10/17/2014 11:26 AM Bruce Robertson, 1:1, ANSI full bleed D (34.00 x 22.00 inches)

**53RD AVENUE WEST**  
**43RD ST. W. TO ROUNDABOUT**  
**ROADWAY PLAN & PROFILE**



NO.	REVISION DESCRIPTION	BY	DATE

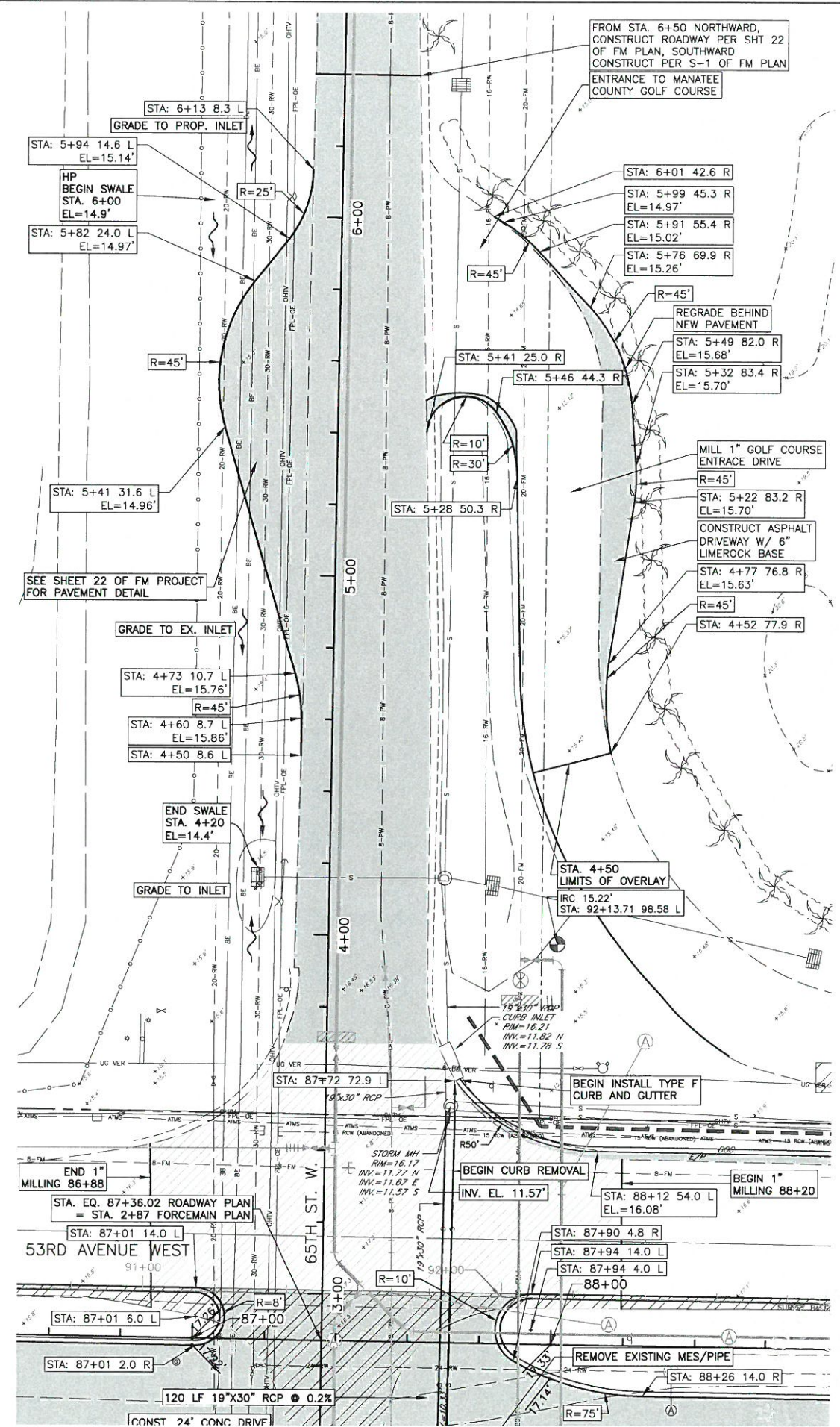
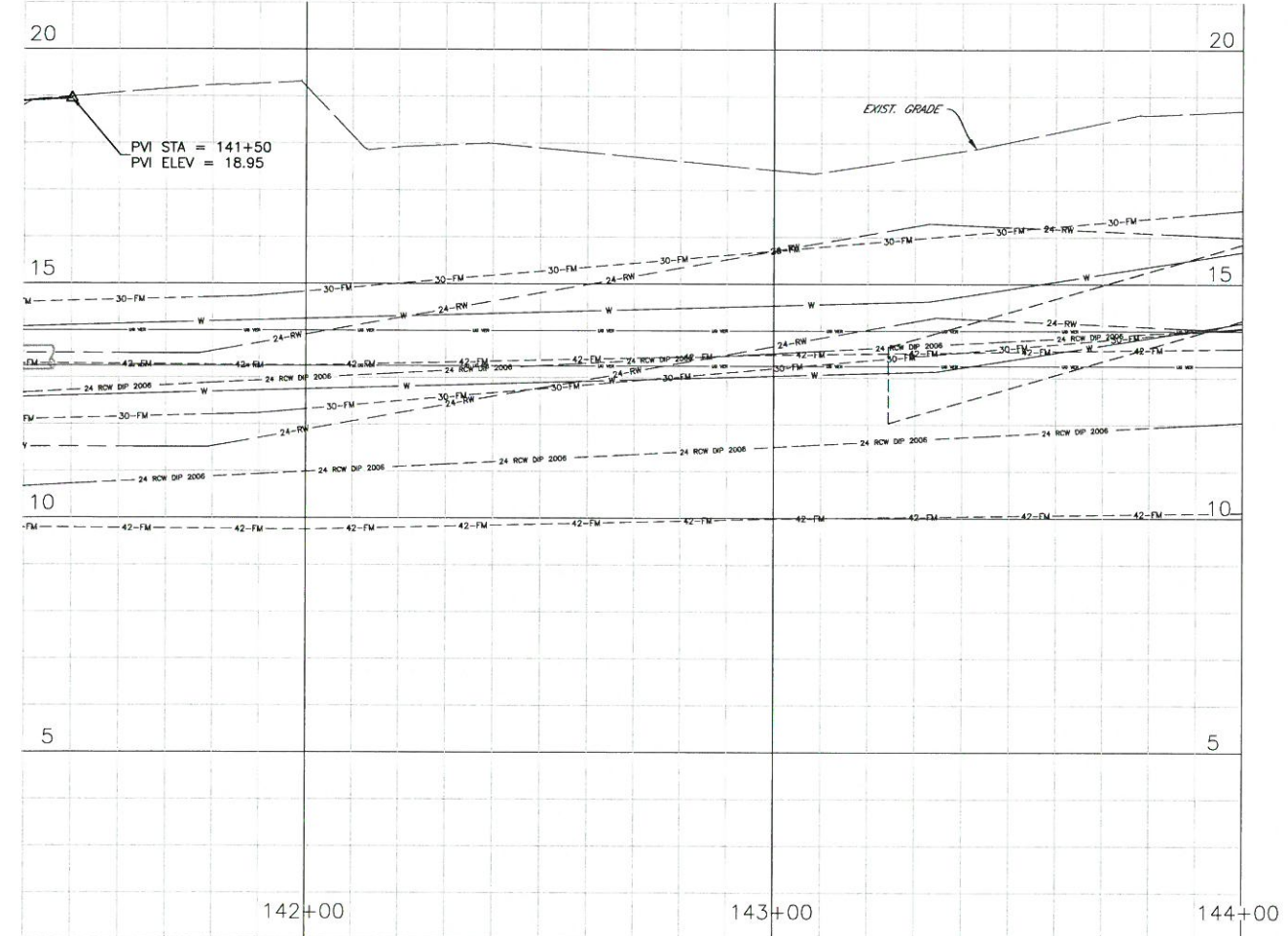
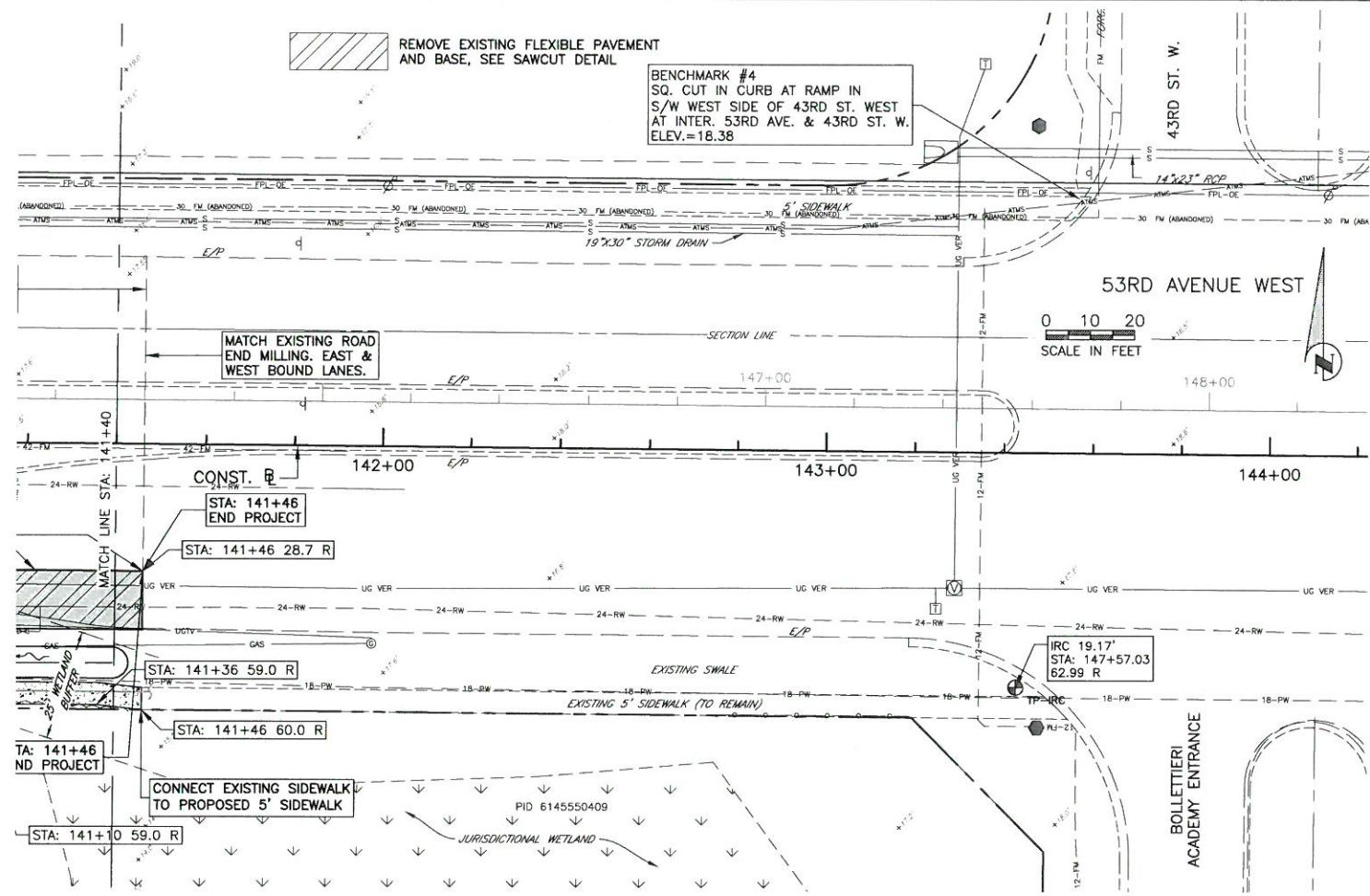
PROJECT #	383-6082960
SURVEY #	3825
SEC./TWN./RGE	16,17,18/35/17
VERT. SCALE	1"=2'
HORZ. SCALE	1"=20'
SURVEYED	BY HYATT/LSF DATE 2001/2012
DESIGNED	BY LSF/JP DATE 2001/2012
DRAWN	BY BLR DATE 10/2012
CHECKED	BY CLM DATE 02/2013

JOHN KENNEDY PARI, P.E.  
FLORIDA P.E. # 56388

*John Kennedy PARI*  
10/20/14  
Signature & Date

COPYRIGHT 2010 MANATEE COUNTY GOVERNMENT  
 I:\pww\engineering\shores\highway\_engineering\ROADS\53rd Ave W\Plan\_Profile.dwg,22 ROAD, 10/17/2014, 11:26 AM Bruce Robertson, T1, ANS (Lul\_bled D (34.00 x 22.00 inches))

COPYRIGHT 2010 MANATEE COUNTY GOVERNMENT | s:\pnd-engineering-shares\highway\_engineering\ROADS\53rd Ave W Plan\_Profile.dwg.03 ROAD\_10/17/2014 11:27 AM Bruce Robertson, I.T. ANS (full bleed D (34.00 x 22.00 inches))



GOLF COURSE ENTRANCE @ 65TH ST. W.

**53RD AVENUE WEST**  
**43RD ST. W. TO ROUNDABOUT**  
**ROADWAY PLAN & PROFILE**

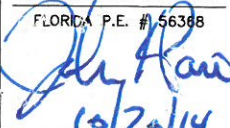
NO.	REVISION DESCRIPTION	BY	DATE

PROJECT #	383-6082960
SURVEY #	3825
SEC./TWN./RGE	16,17,18/35/17
VERT. SCALE	1"=2'
HORZ. SCALE	1"=20'

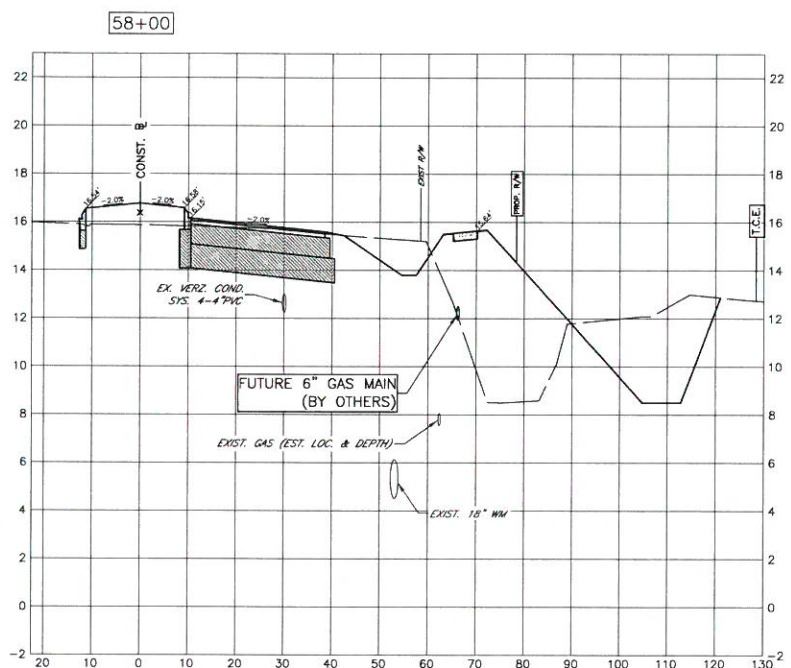
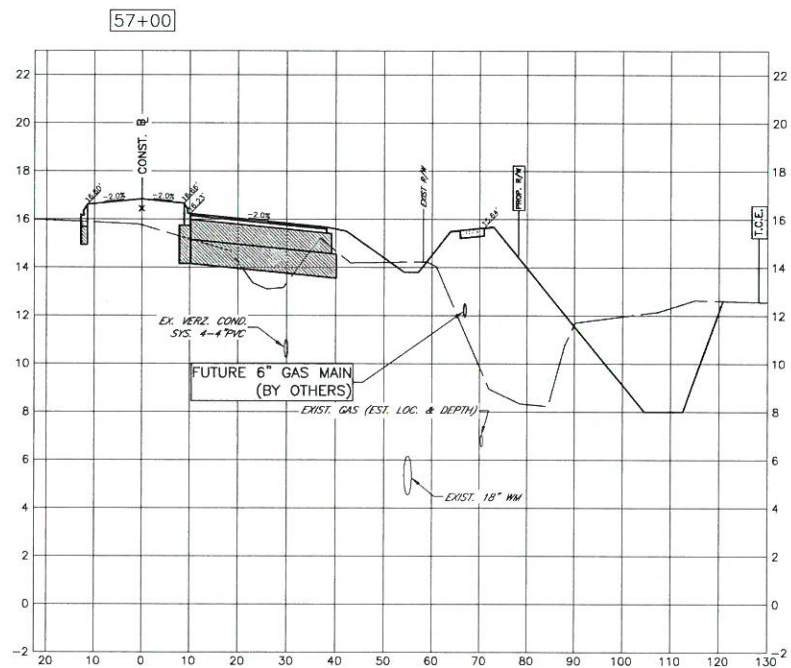
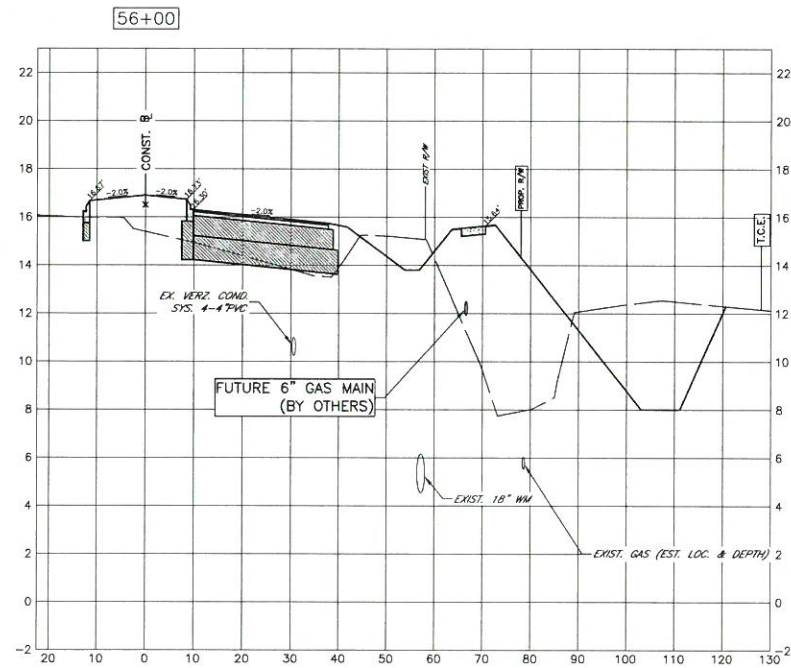
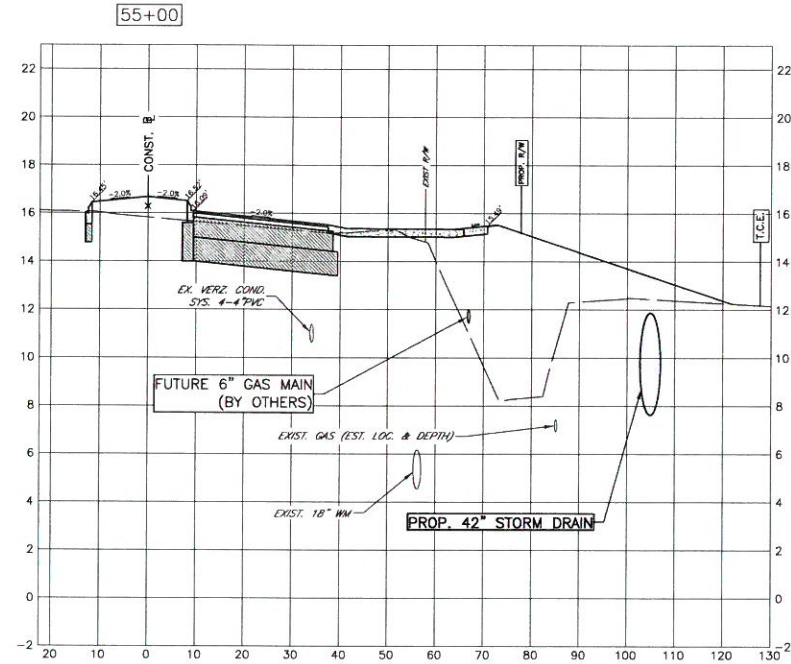
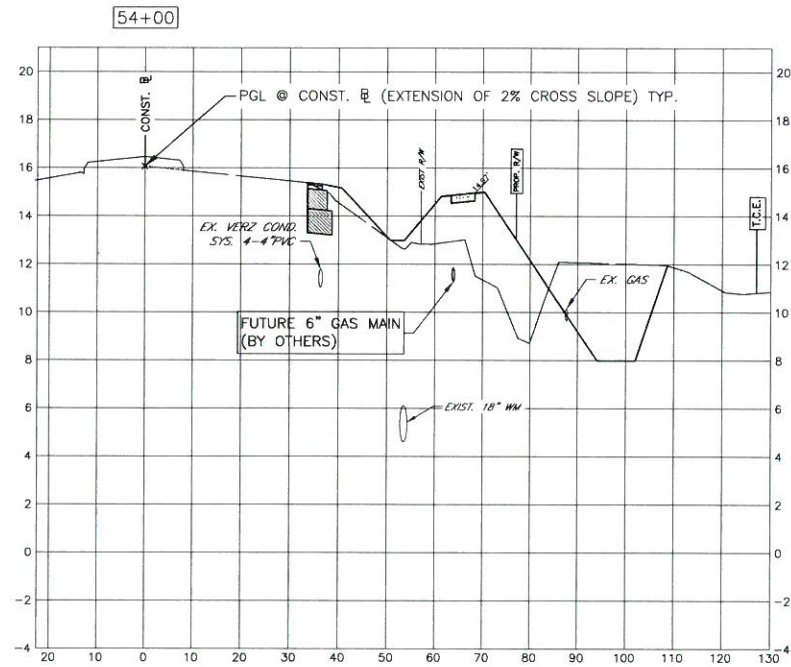
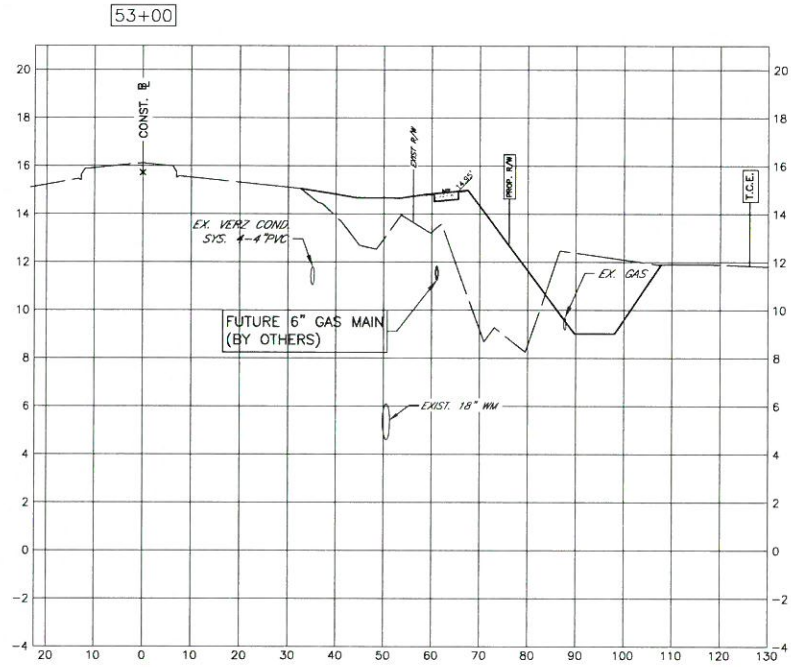
BY	DATE
SURVEYED	HYATT/LSF 2001/2012
DESIGNED	LSF/JP 2001/2012
DRAWN	BLR 10/2012
CHECKED	CLK 02/2013

JOHN KENNEDY PARI, P.E.  
 FLORIDA P.E. # 56368  
  
 10/20/14  
 Signature & Date



MANATEE COUNTY GOVERNMENT  
PUBLIC WORKS DEPARTMENT  
ENGINEERING SERVICES  
1022 26th Avenue East  
Bradenton, FL 34208

**53RD AVENUE WEST  
43RD ST. W. TO ROUNDABOUT  
CROSS SECTION**



NO.	REVISION DESCRIPTION	BY	DATE

PROJECT #	383-6082960
SURVEY #	3525
SEC./TWN./RGE	16,17,18/35/17
VERT. SCALE	1"=4'
HORZ. SCALE	1"=20'

	BY	DATE
SURVEYED	HYATT/LSF	2001/2012
DESIGNED	LSF/JP	2001/2012
DRAWN	BLR	10/2012
CHECKED	CLM	02/2013

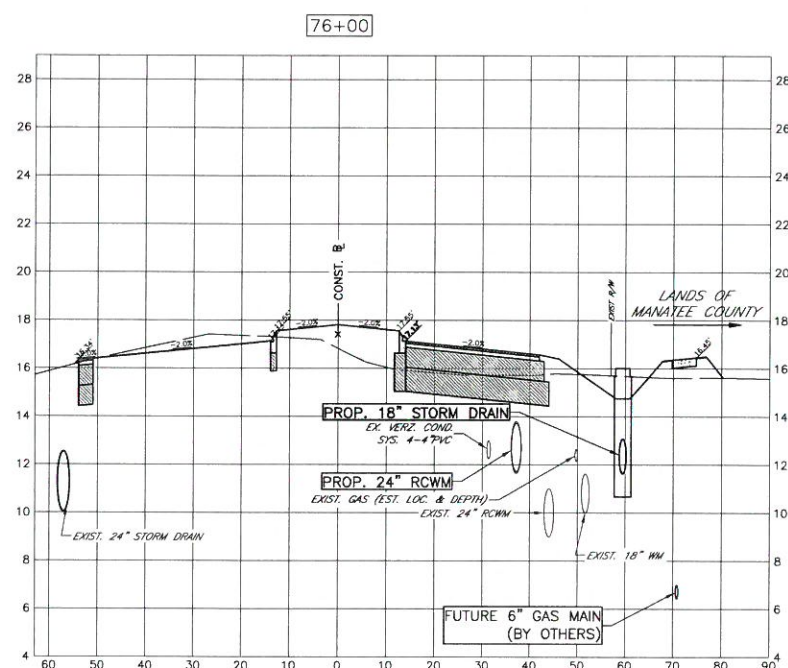
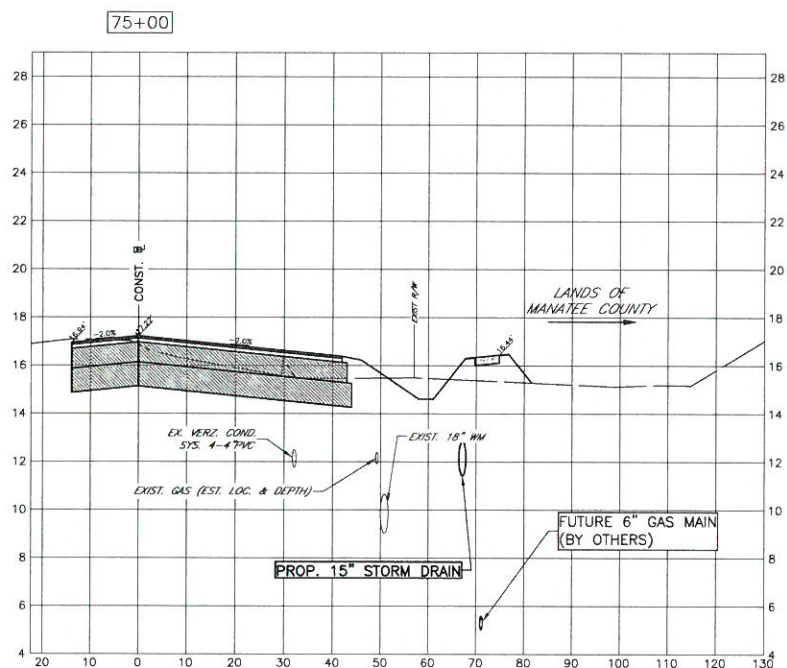
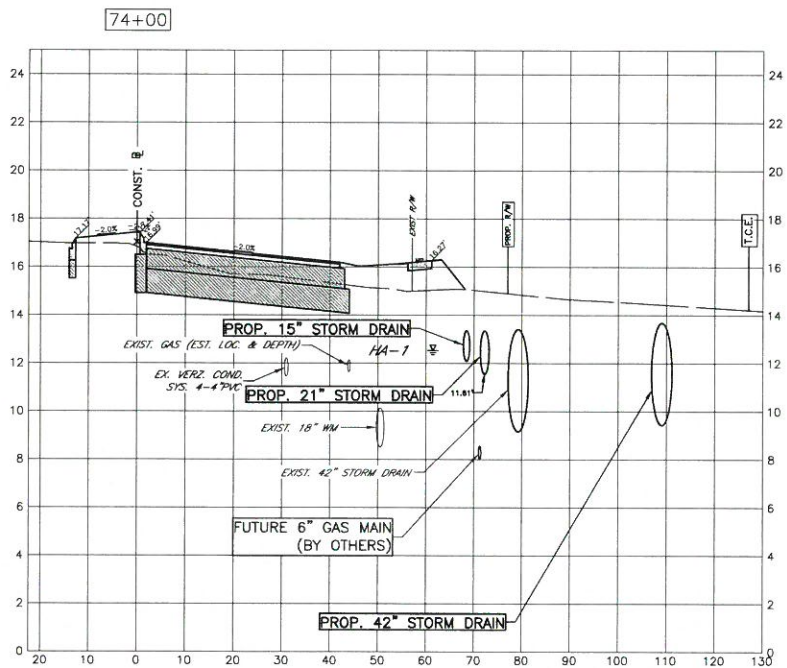
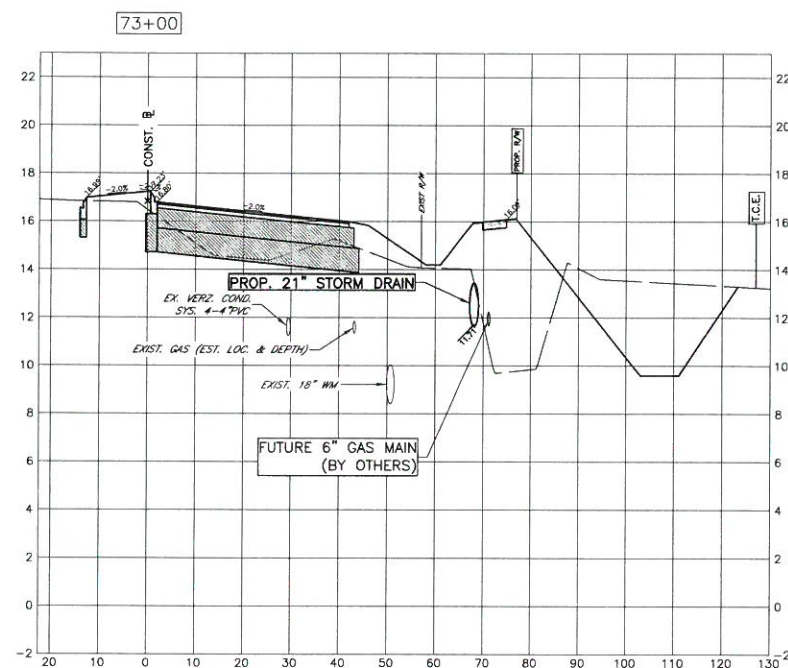
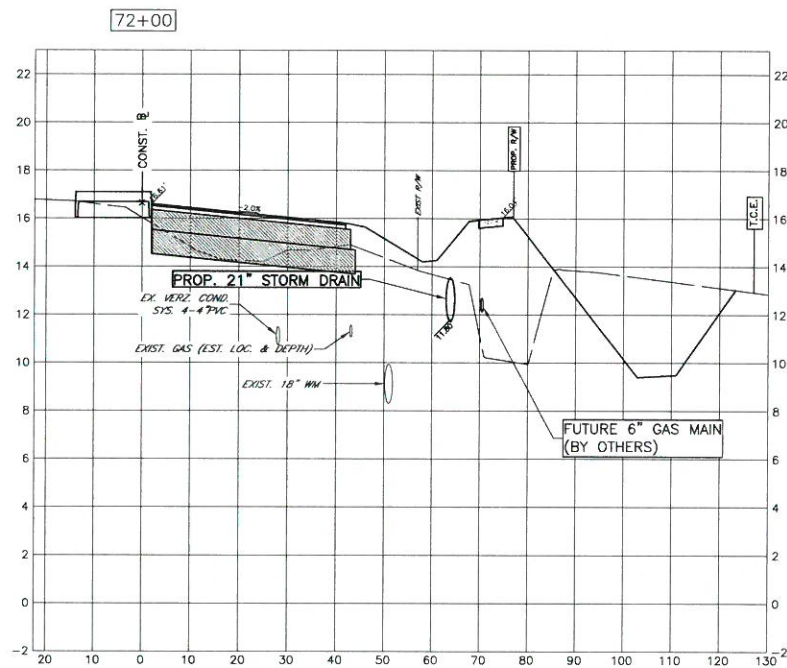
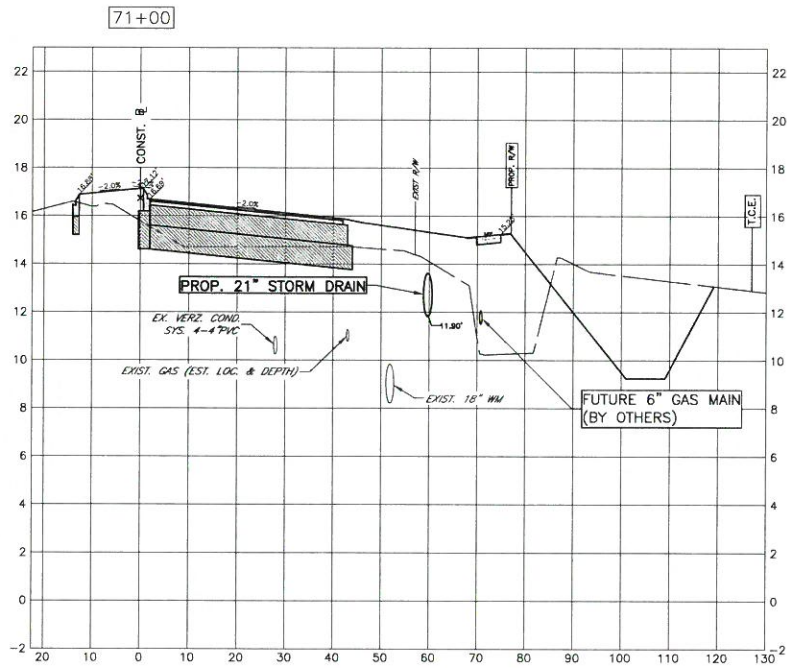
JOHN KENNEDY PARI, P.E.  
FLORIDA P.E. # 56368  
*John Parri*  
10/20/14  
Signature & Date

COPYRIGHT 2010 MANATEE COUNTY GOVERNMENT I:\pwr\engineering\shores\highway engineering\ROADS\53rd Ave W Cross\_Secs.dwg,24 X-SEC, 10/9/2014 11:55 AM Bruce Robertson, 1:1, ANSI full bleed D (34.00 x 22.00 inches)





**53RD AVENUE WEST  
43RD ST. W. TO ROUNDABOUT  
CROSS SECTION**



NO.	REVISION DESCRIPTION	BY	DATE

PROJECT #	383-6082960
SURVEY #	3525
SEC./TWN./RGE	16,17,18/35/17
VERT. SCALE	1"=4'
HORIZ. SCALE	1"=20'

SURVEYED	BY	DATE
DESIGNED	LSF/JP	2001/2012
DRAWN	BLR	10/2012
CHECKED	CLM	02/2013

JOHN KENNEDY PARI, P.E.  
FLORIDA P.E. # 56368

*John Kennedy Pari*  
10/20/14  
Signature & Date

COPYRIGHT 2010 MANATEE COUNTY GOVERNMENT I:\pwr\_engineering\shore\highway\_engineering\ROADS\53rd Ave W\Cross\_Section.dwg,27 X-SEC, 10/9/2014 11:56 AM Bruce Robertson, 1:1, ANSI Full bleed D (34.00 x 22.00 inches)

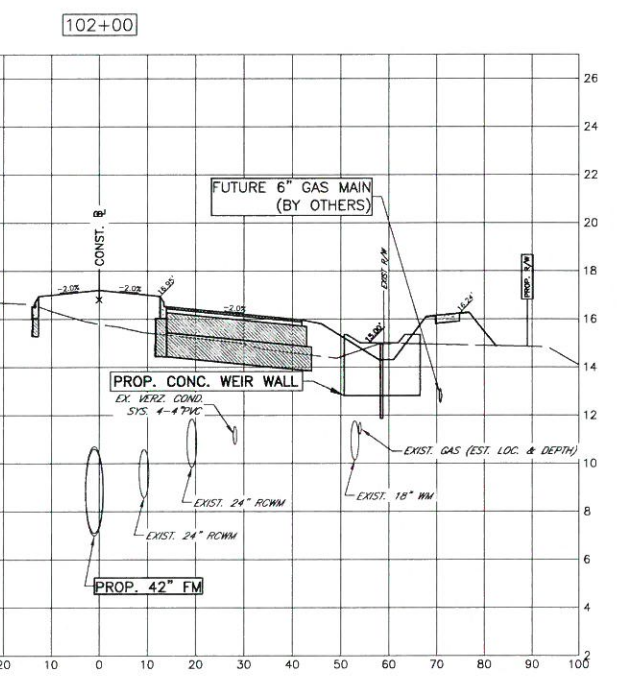
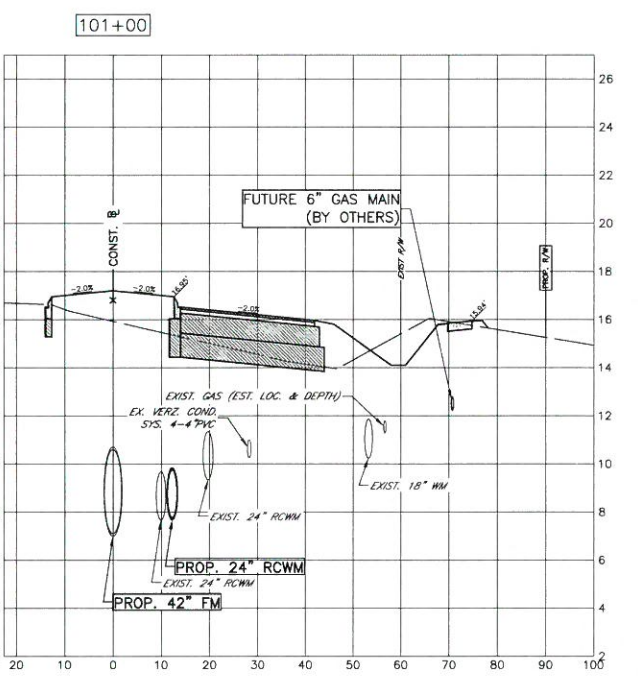
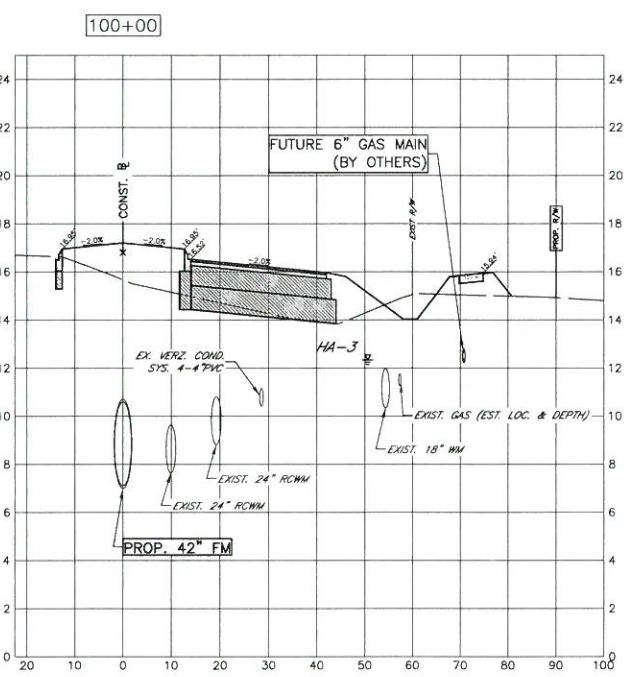
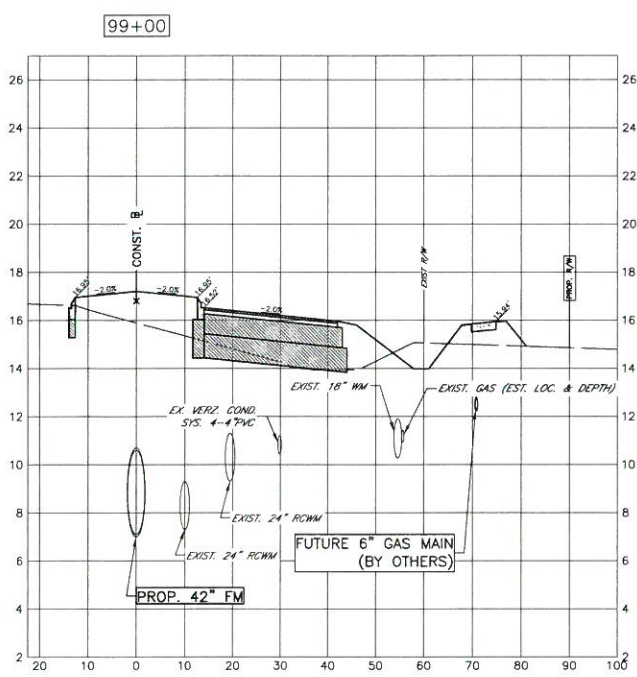
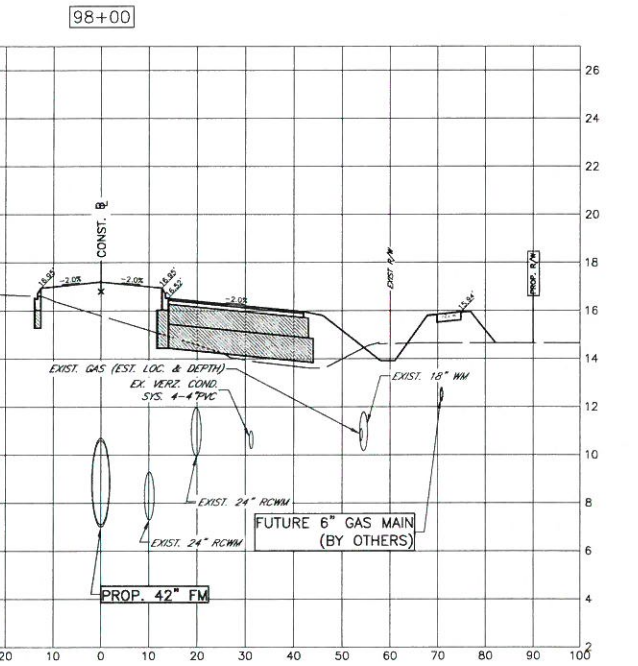
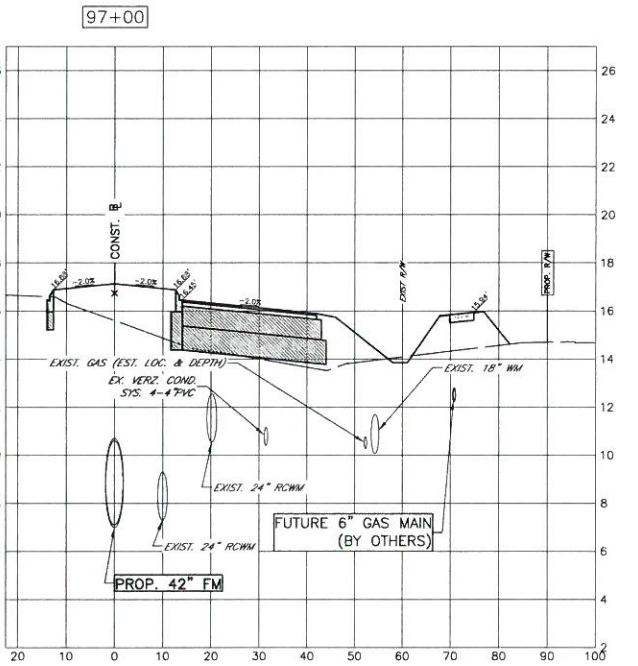
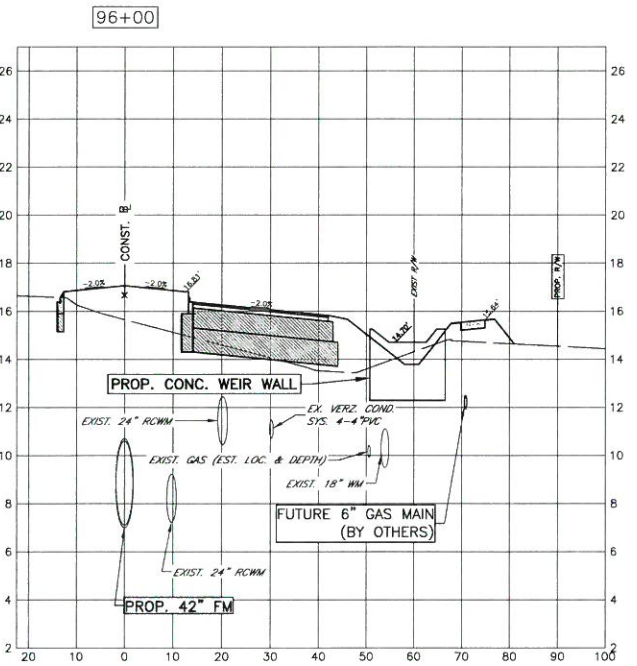
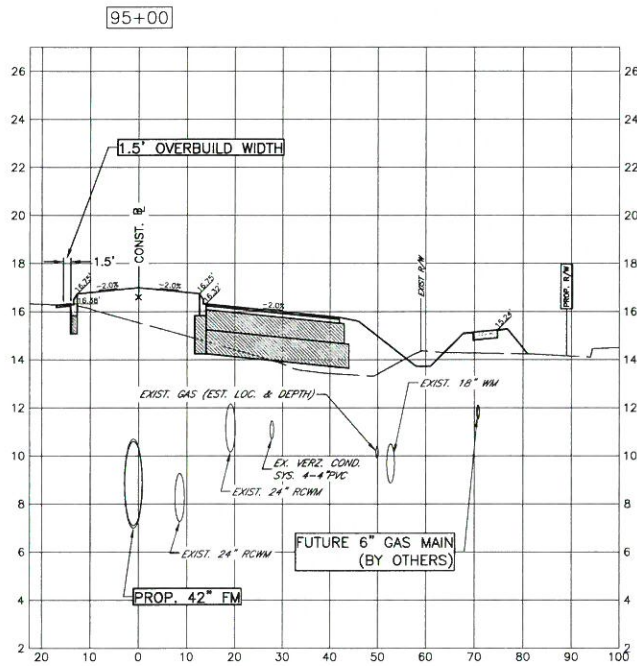








**53RD AVENUE WEST  
43RD ST. W. TO ROUNDABOUT  
CROSS SECTION**



NO.	REVISION DESCRIPTION	BY	DATE

PROJECT #	383-6082960
SURVEY #	3525
SEC./TWN./RGE	16,17,18/35/17
VERT. SCALE	1"=4'
HORIZ. SCALE	1"=20'

	BY	DATE
SURVEYED	HYATT/LSF	2001/2012
DESIGNED	LSF/JP	2001/2012
DRAWN	BLR	10/2/2012
CHECKED	CLM	02/2013

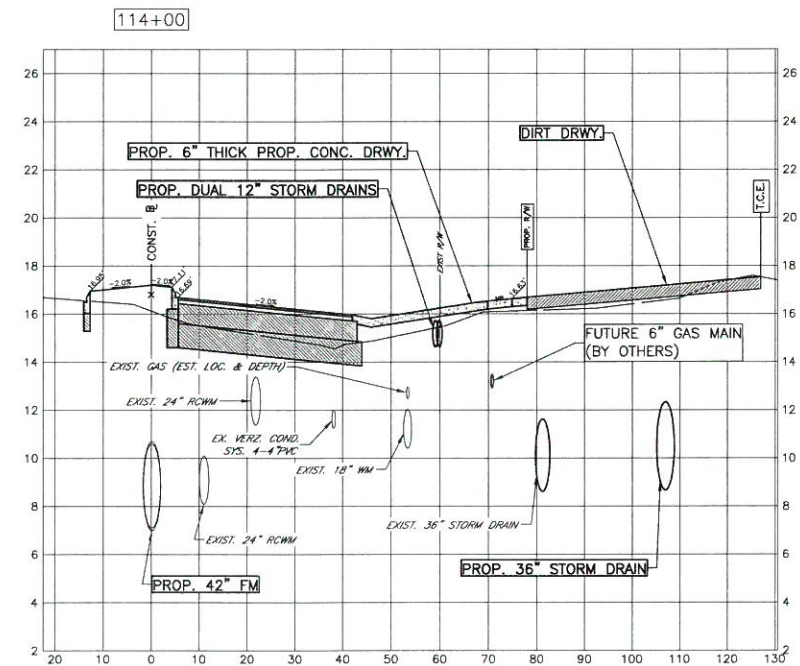
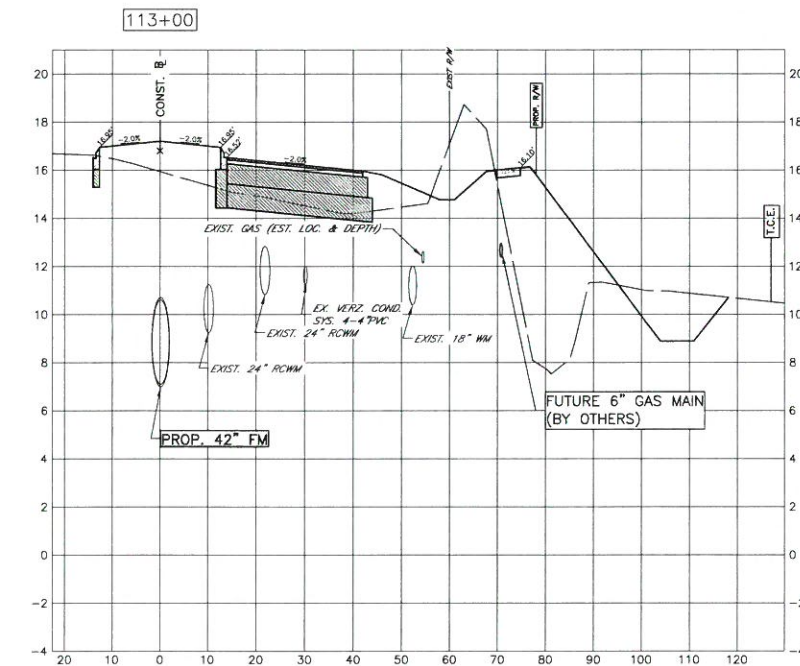
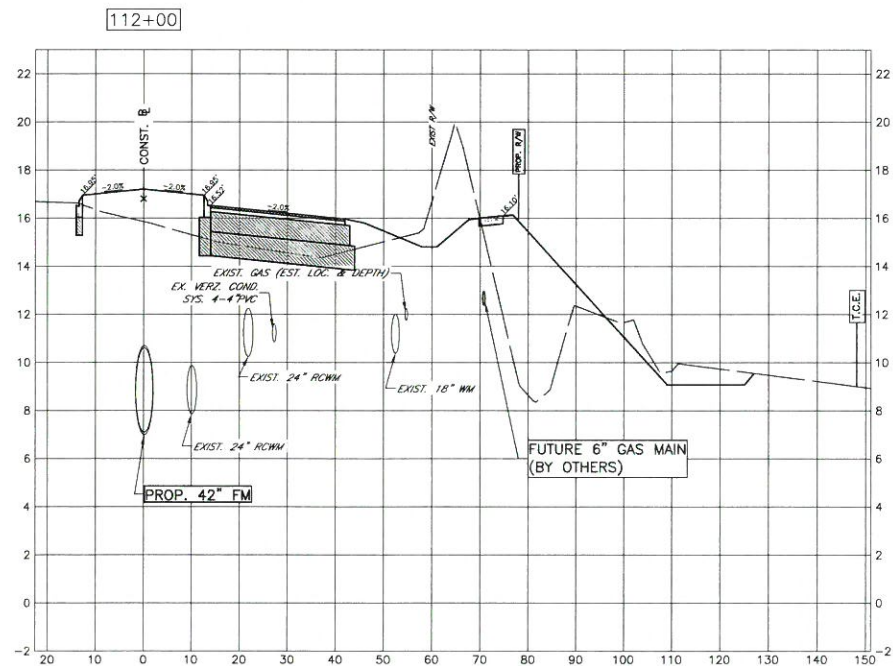
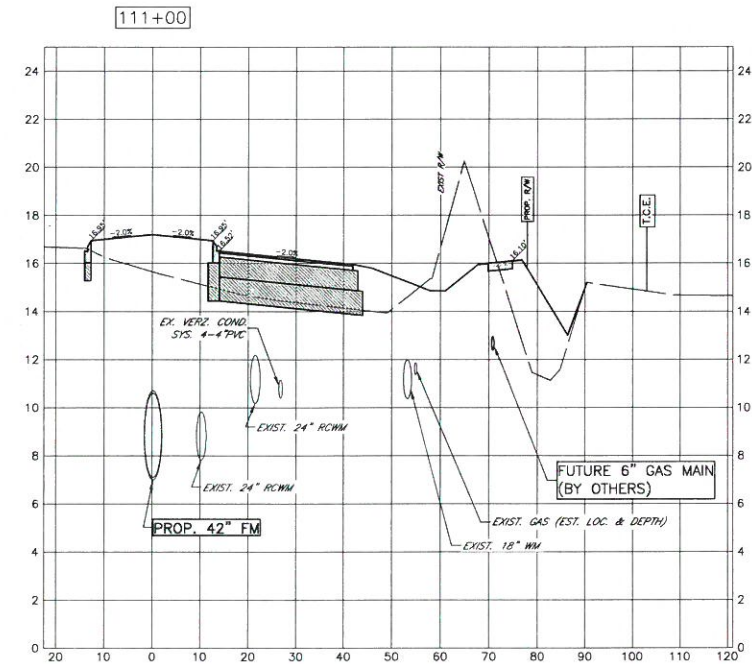
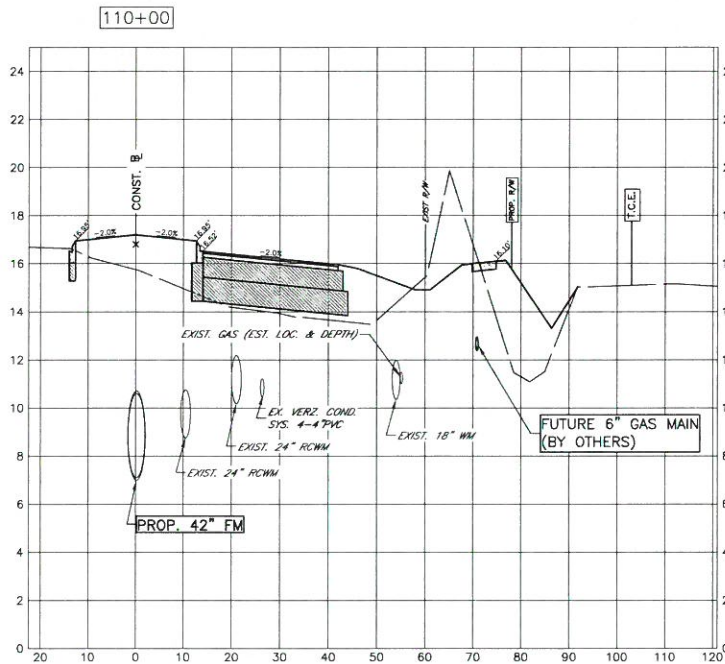
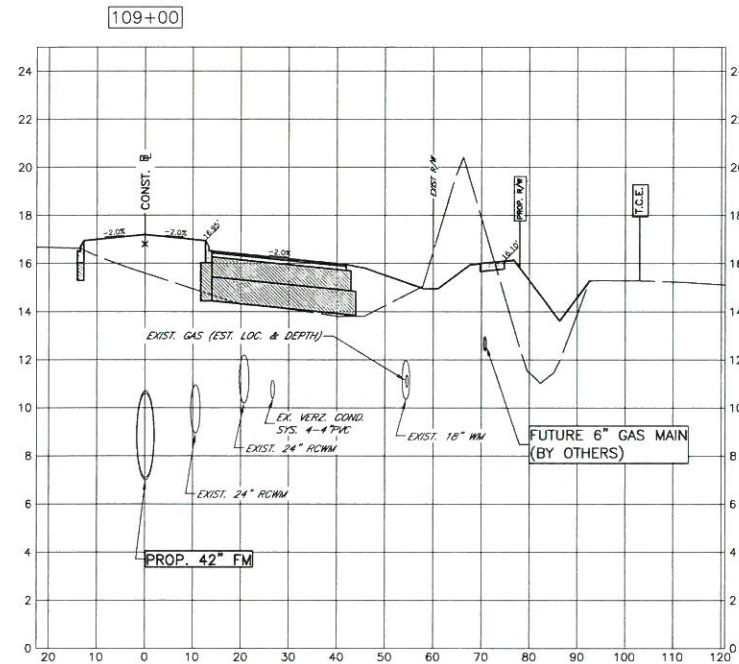
JOHN KENNEDY PARI, P.E.  
FLORIDA P.E. # 56368  
*John Parri*  
10/2/14  
Signature & Date

COPYRIGHT 2010 MANATEE COUNTY GOVERNMENT s:\pww\engineering\share\highway\_engineering\ROADS\53rd ave w\DWG\VP\_Design\53rd Ave W Cross\_Secs.dwg 31 X-SEC: 10/02/2014 11:56 AM Bruce.Robertson, 1:1, ANS full bleed D (34.00 x 22.00 inches)





**53RD AVENUE WEST  
43RD ST. W. TO ROUNDABOUT  
CROSS SECTION**



NO.	REVISION DESCRIPTION	BY	DATE

PROJECT #	383-6082960
SURVEY #	3525
SEC./TWN./RGE	16,17,18/35/17
VERT. SCALE	1"=4'
HORIZ. SCALE	1"=20'

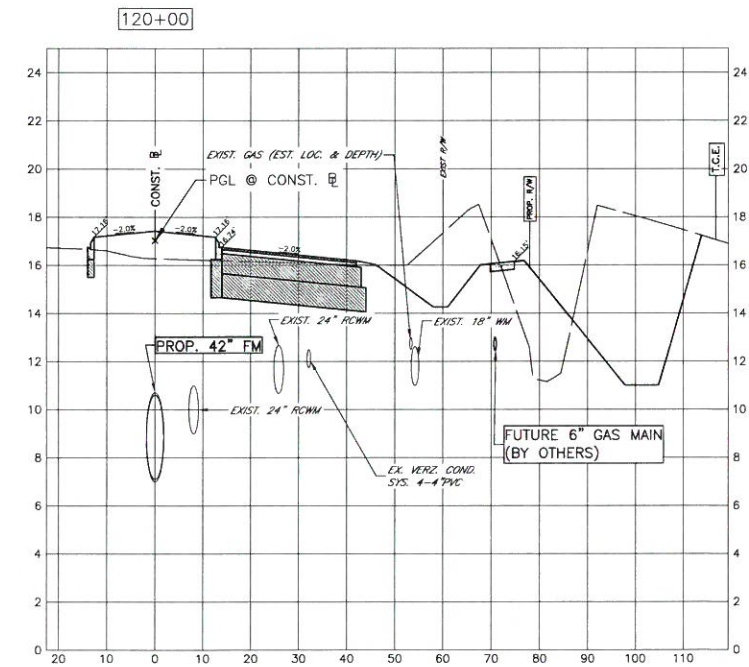
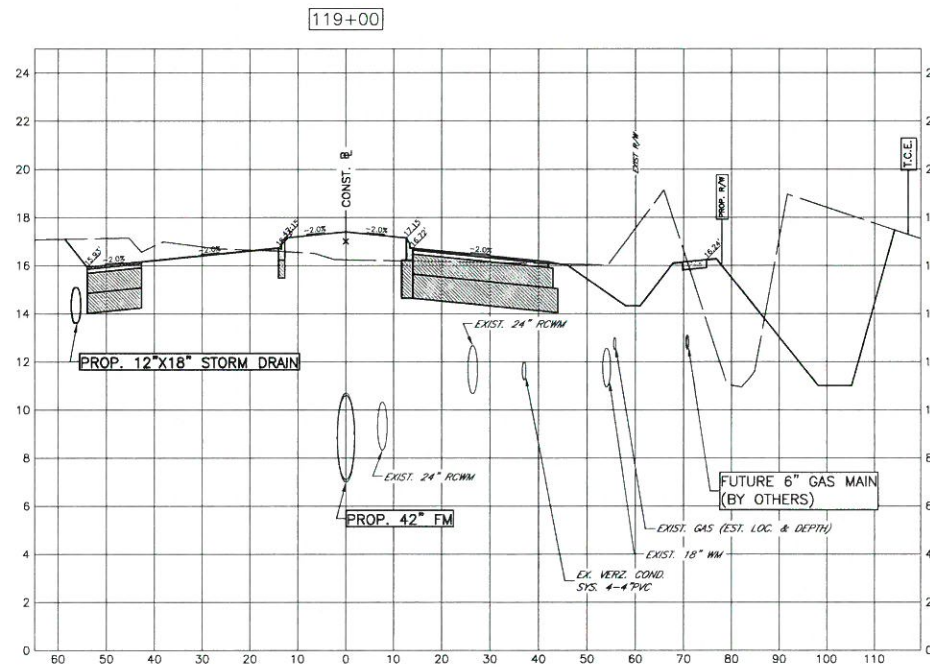
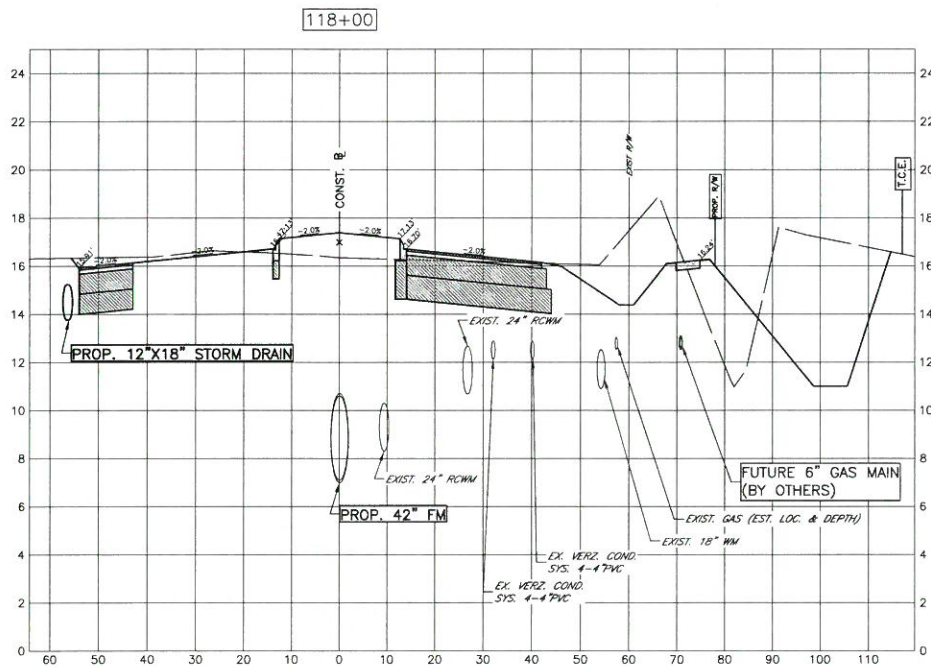
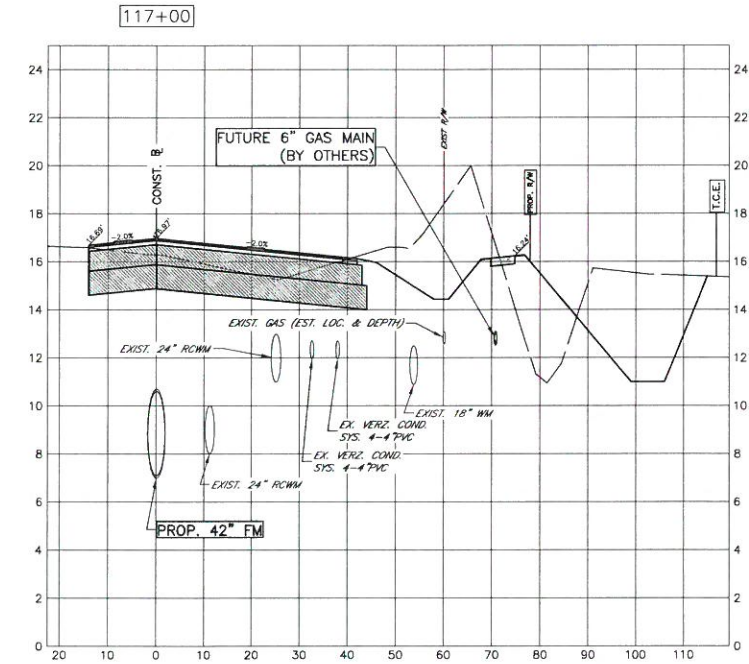
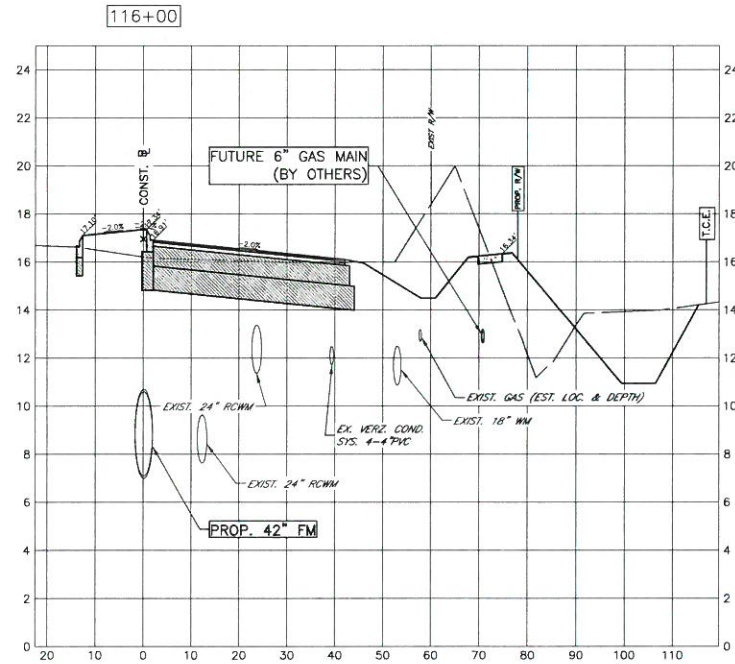
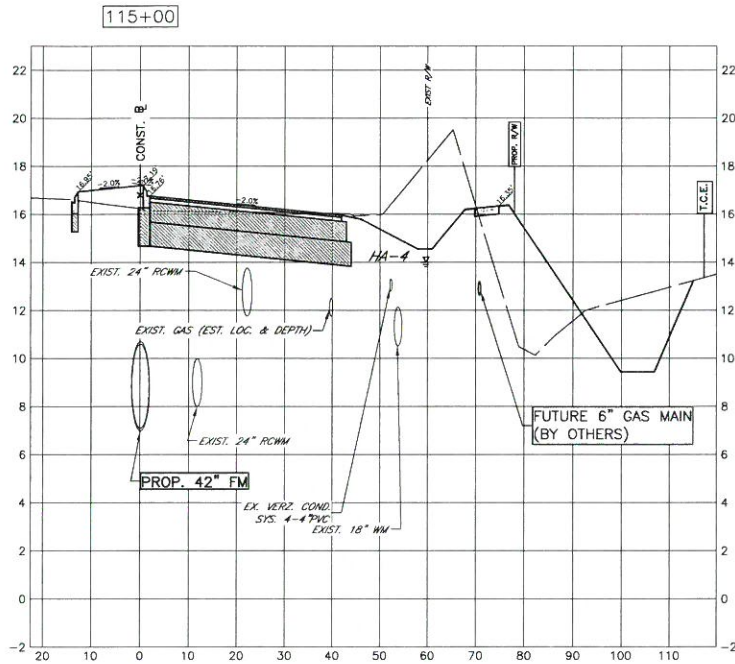
	BY	DATE
SURVEYED	HYATT/LSF	2001/2012
DESIGNED	LSF/JP	2001/2012
DRAWN	BLR	10/2012
CHECKED	CLM	02/2013

JOHN KENNEDY PARI, P.E.  
FLORIDA P.E. # 56368  
*John Parri*  
10/20/14  
Signature & Date

COPYRIGHT 2010 MANATEE COUNTY GOVERNMENT s:\pww\engineering\shores\highway\engineering\ROADS\53rd ave W\DWG\1\_P\_Design\33rd Ave W Cross\_Secs.dwg,33 X-SEC. 10/9/2014 11:57 AM Bruce Robertson, 1:1, ANSI full bleed D (34.00 x 22.00 inches)



**53RD AVENUE WEST  
43RD ST. W. TO ROUNDABOUT  
CROSS SECTION**



NO.	REVISION DESCRIPTION	BY	DATE

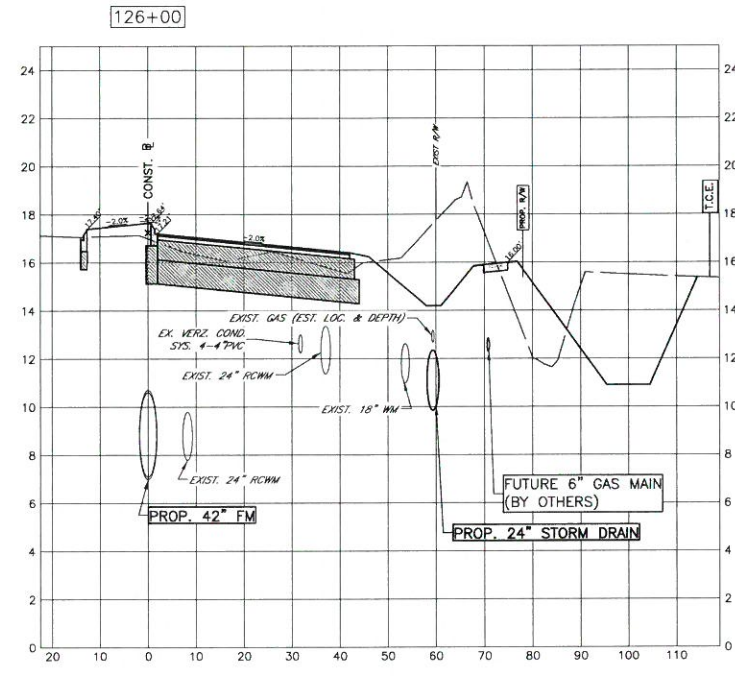
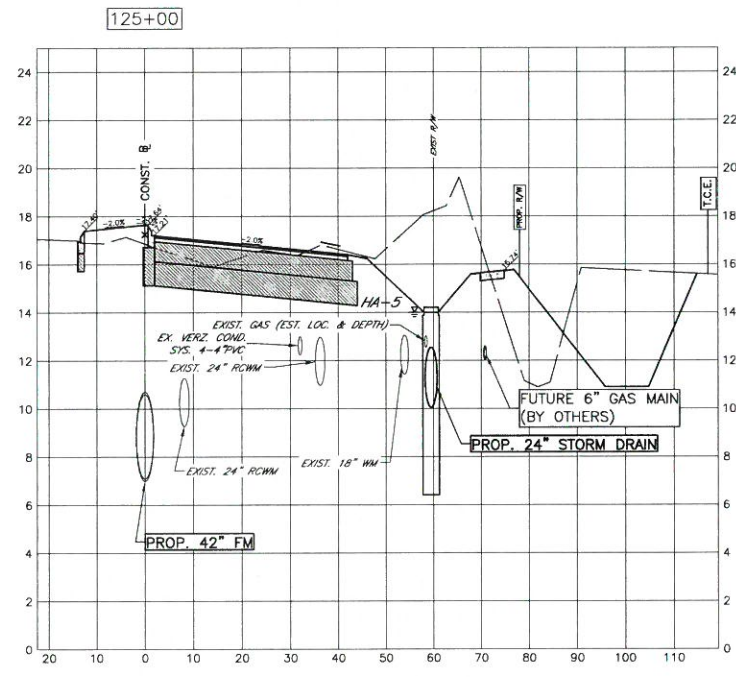
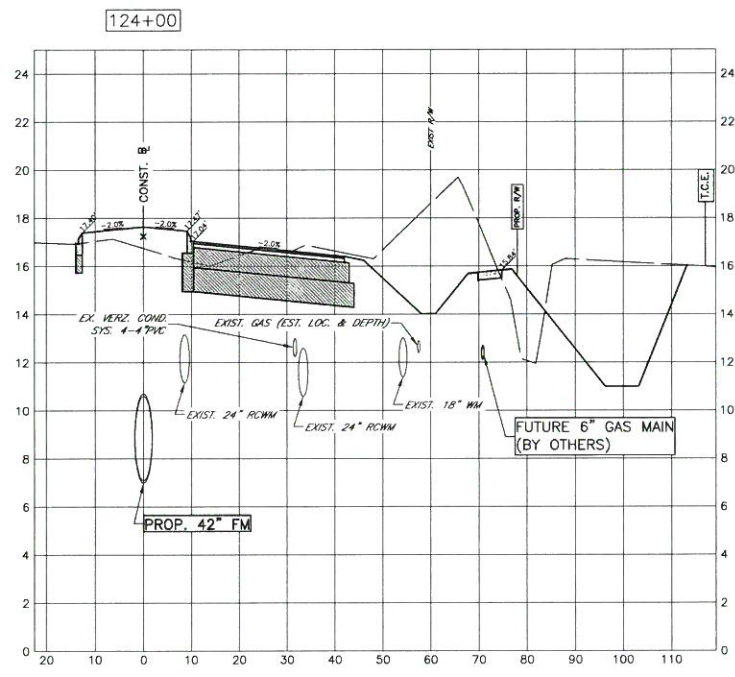
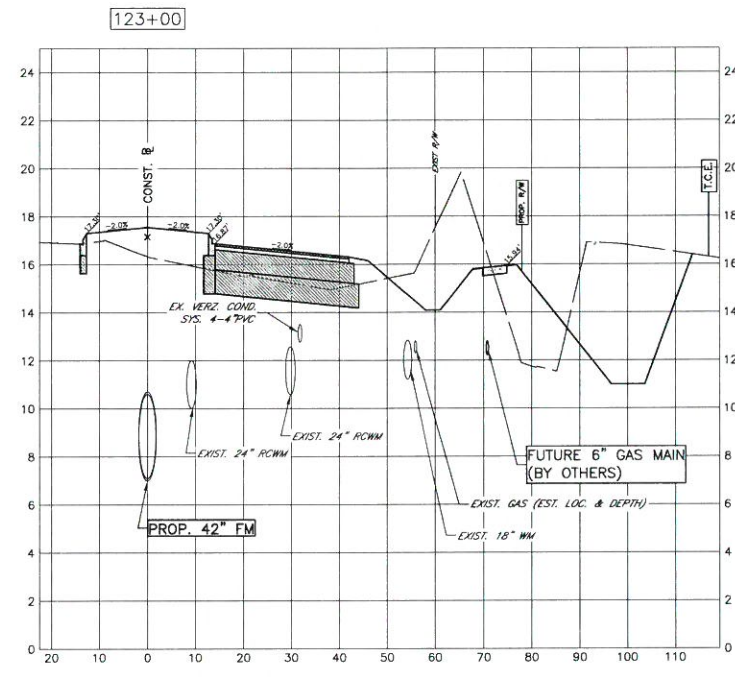
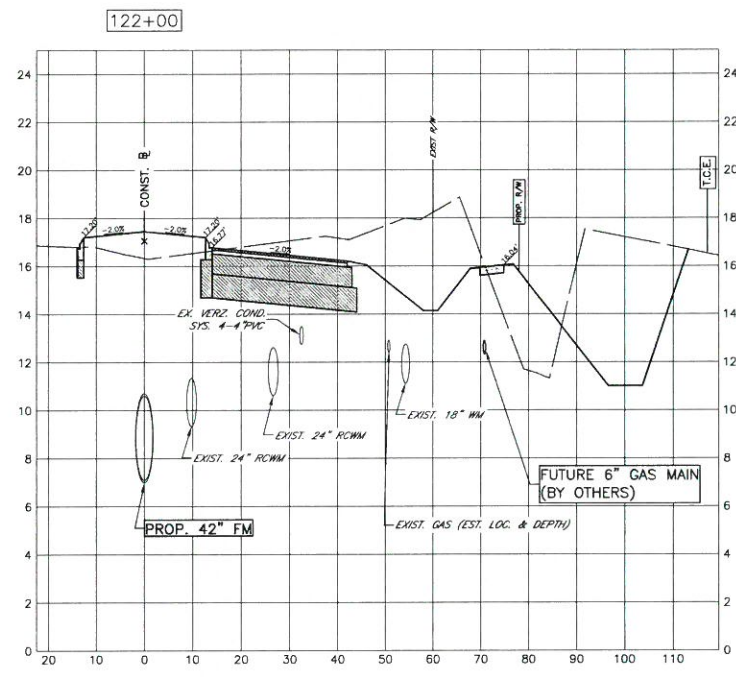
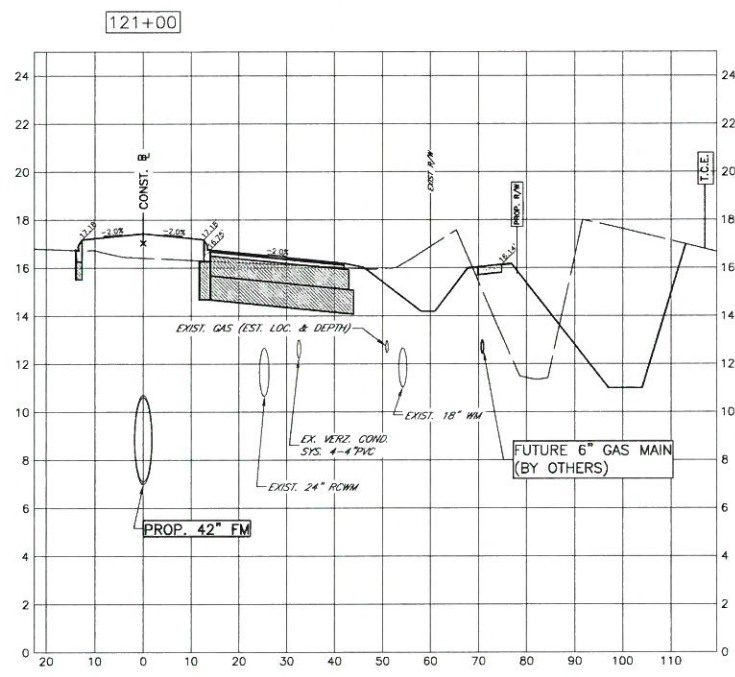
PROJECT #	383-6082960
SURVEY #	3525
SEC./TWN./RGE	16,17,18/35/17
VERT. SCALE	1"=4'
HORZ. SCALE	1"=20'

	BY	DATE
SURVEYED	HYA/TT/LSF	2001/2012
DESIGNED	LSF/JP	2001/2012
DRAWN	BLR	10/2012
CHECKED	CLM	02/2013

JOHN KENNEDY PARI, P.E.  
FLORIDA P.E. # 156388  
*John Parri*  
10/20/14  
Signature & Date

COPYRIGHT 2010 MANATEE COUNTY GOVERNMENT s:\pww\engineering\share\highway\_engineering\ROADS\53rd Ave W\DWG\_P\_Design\53rd Ave W Cross\_Secs.dwg,34 X-SEC- 10/9/2014 11:57 AM Bruce Robertson, 1:1, ANS full bleed D (34.00 x 22.00 inches)

**53RD AVENUE WEST  
43RD ST. W. TO ROUNDABOUT  
CROSS SECTION**



NO.	REVISION DESCRIPTION	BY	DATE

PROJECT #	383-6082960
SURVEY #	3525
SEC./TWN./RGE	16,17,18/35/17
VERT. SCALE	1"=4'
HORZ. SCALE	1"=20'
SURVEYED	BY HYATT/LSF DATE 2001/2012
DESIGNED	LSF/JP 2001/2012
DRAWN	BLR 10/2012
CHECKED	CLM 02/2013

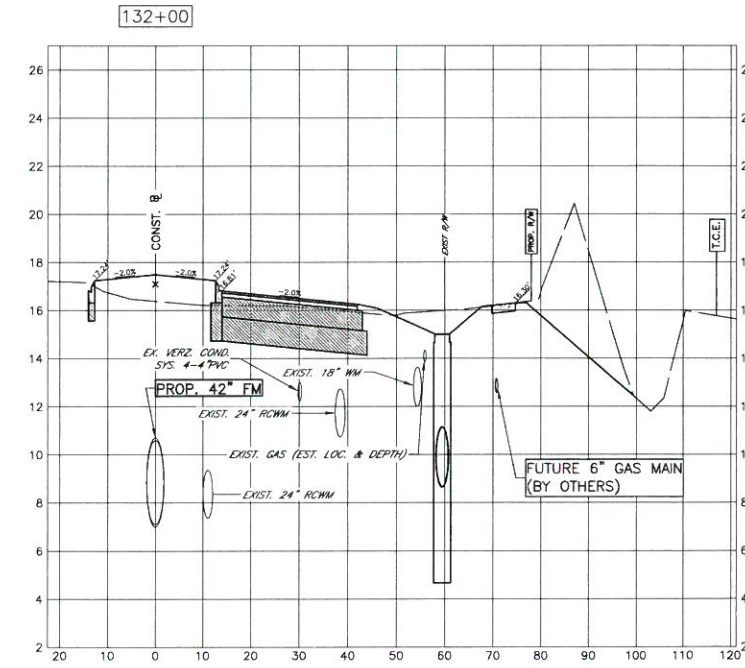
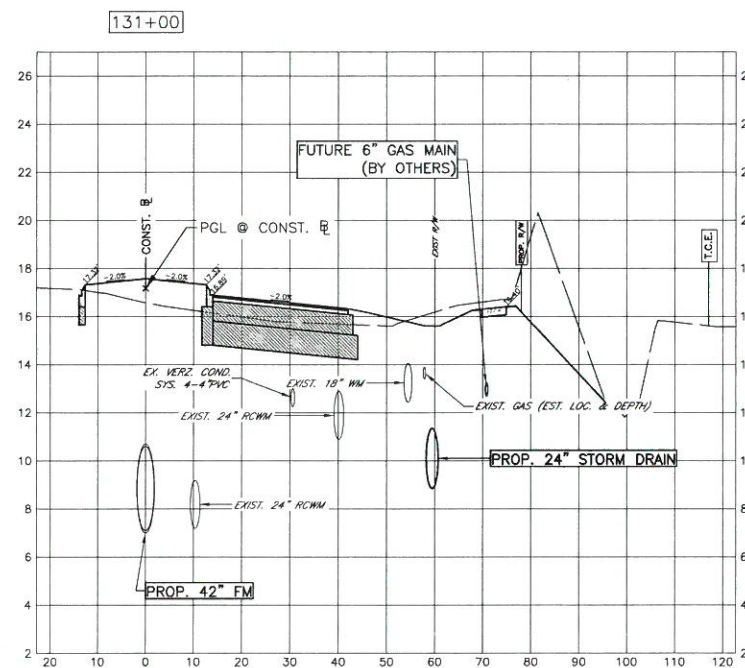
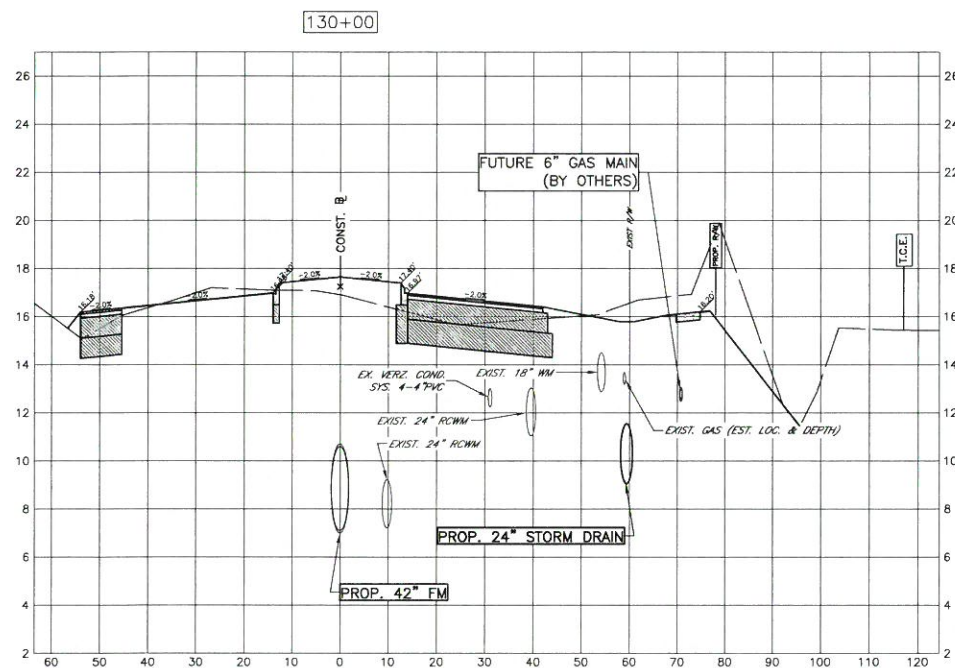
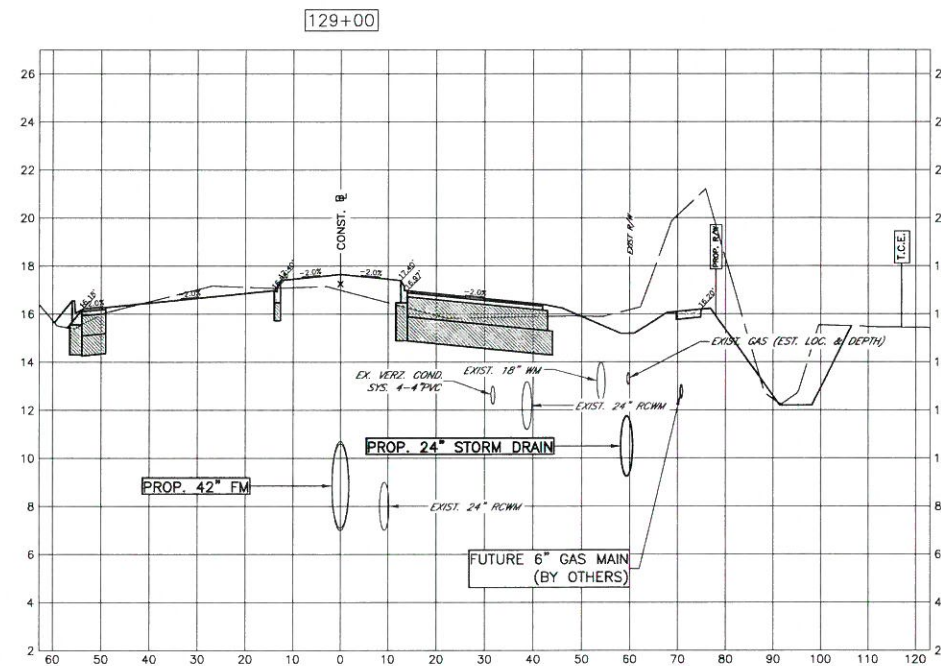
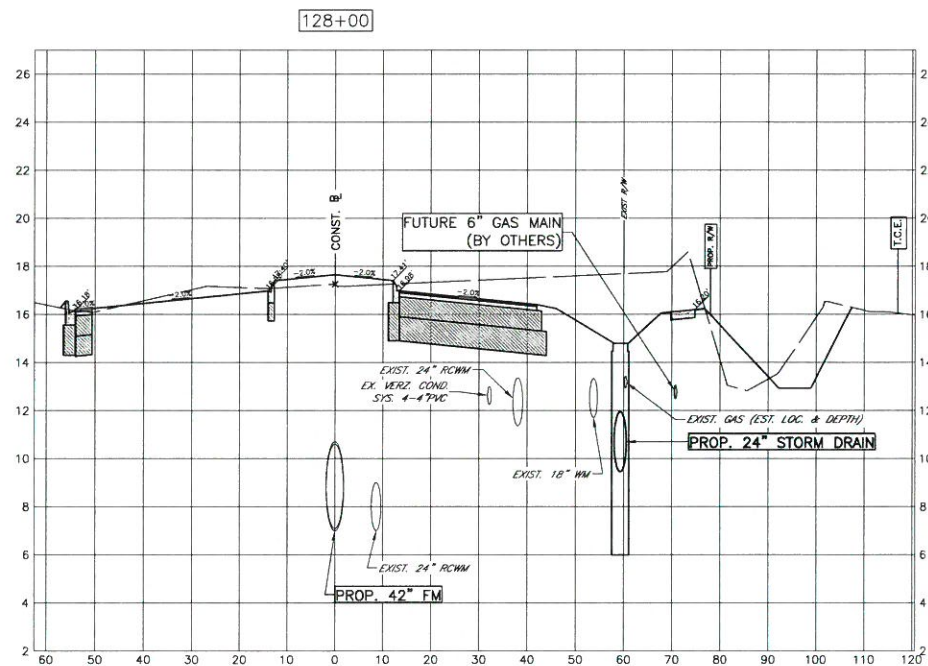
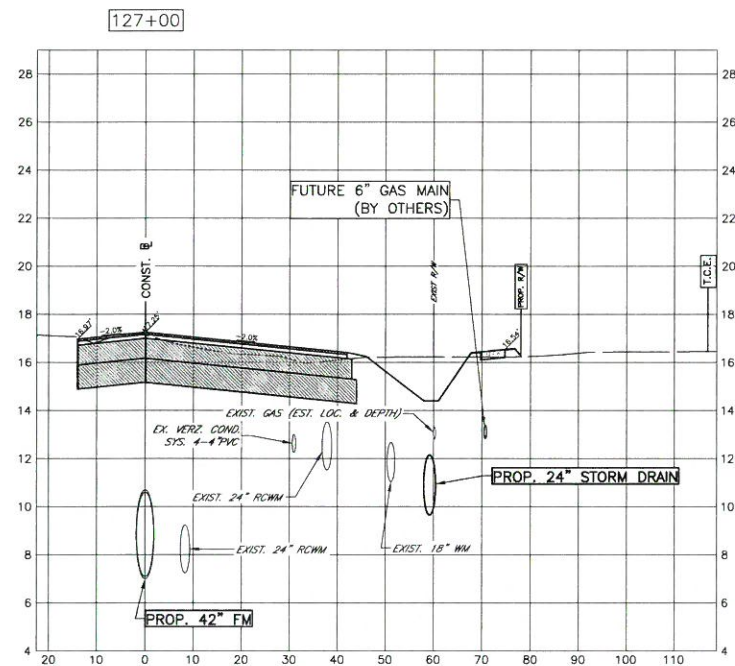
JOHN KENNEDY PARI, P.E.  
FLORIDA P.E. # 56368

*John Parri*  
10/20/14  
Signature & Date

COPYRIGHT 2010 MANATEE COUNTY GOVERNMENT s:\pww\engineering\shore\highway engineering\ROADS\53rd ave W\DWG\_P\_Design\53rd Ave W Cross\_Secs.dwg,35 X-SEC, 10/9/2014 11:57 AM Bruce Robertson, 1:1, ANS full bleed D (34.00 x 22.00 inches)



**53RD AVENUE WEST  
43RD ST. W. TO ROUNDABOUT  
CROSS SECTION**



NO.	REVISION DESCRIPTION	BY	DATE

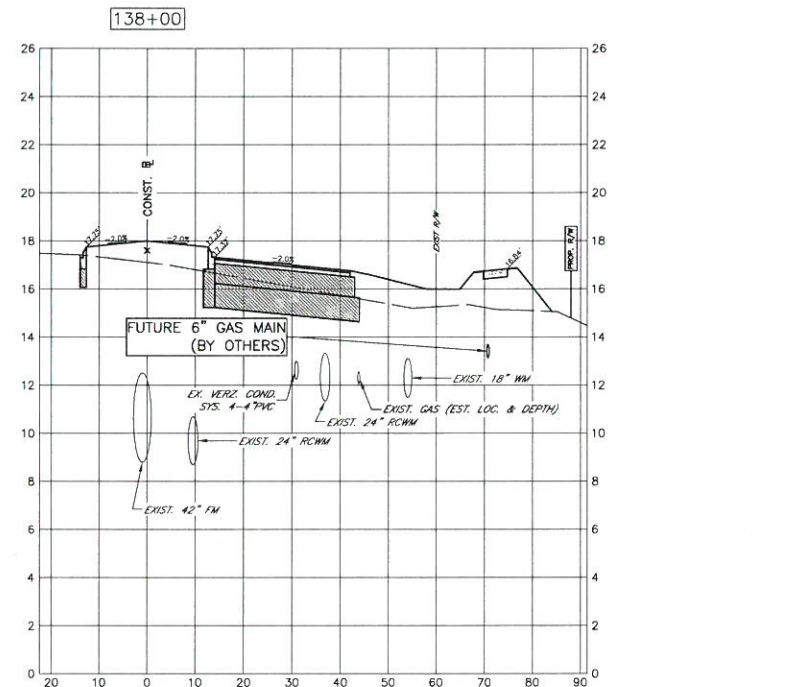
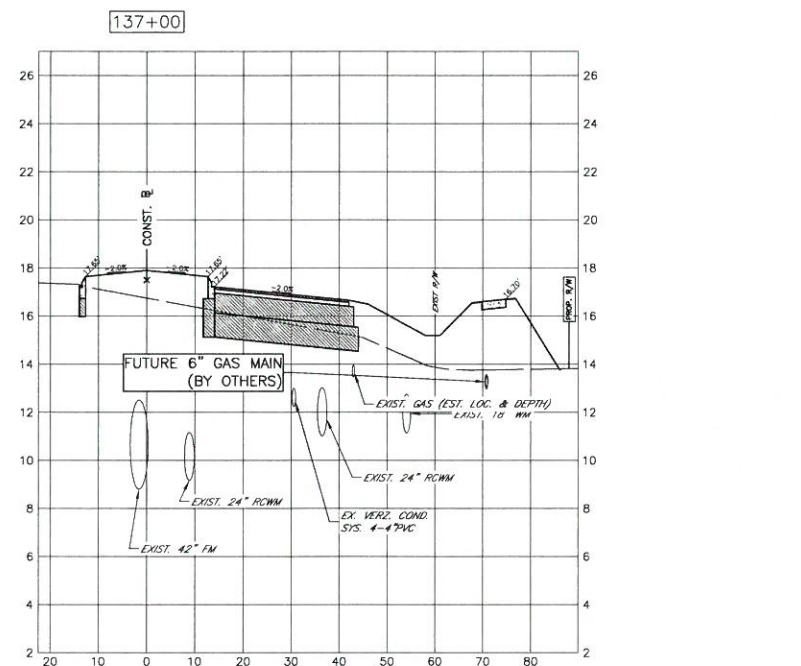
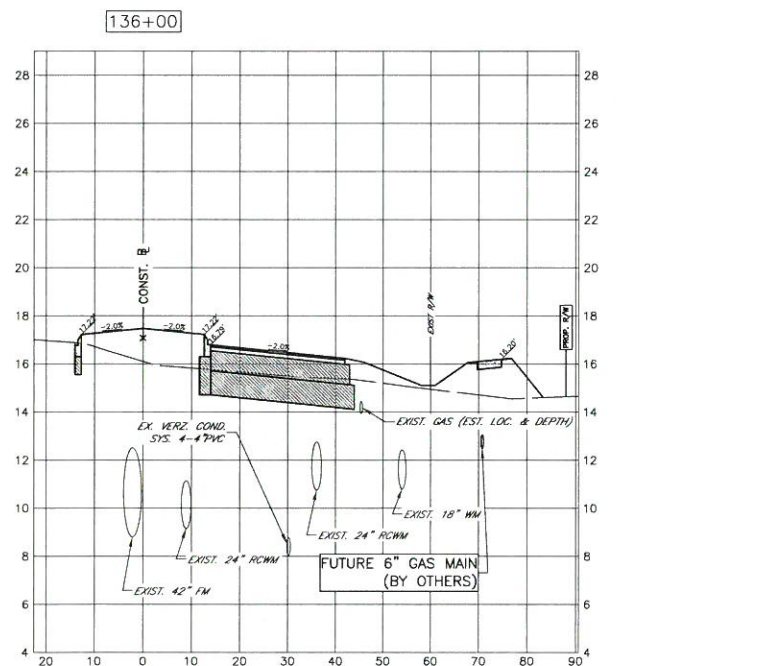
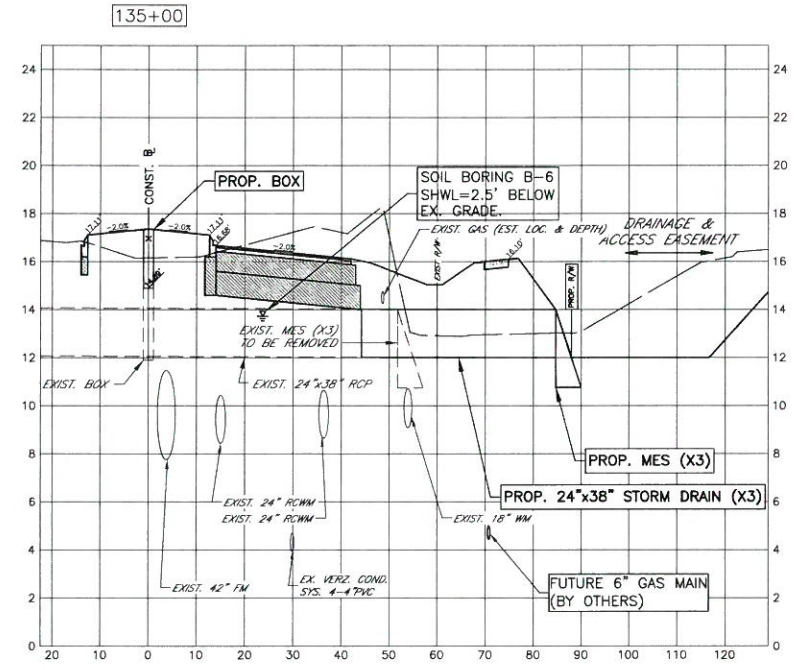
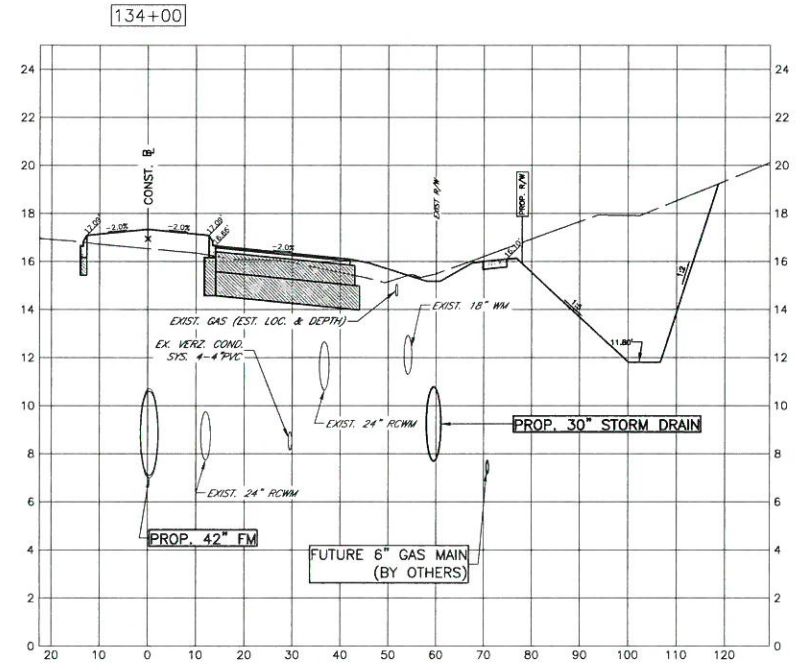
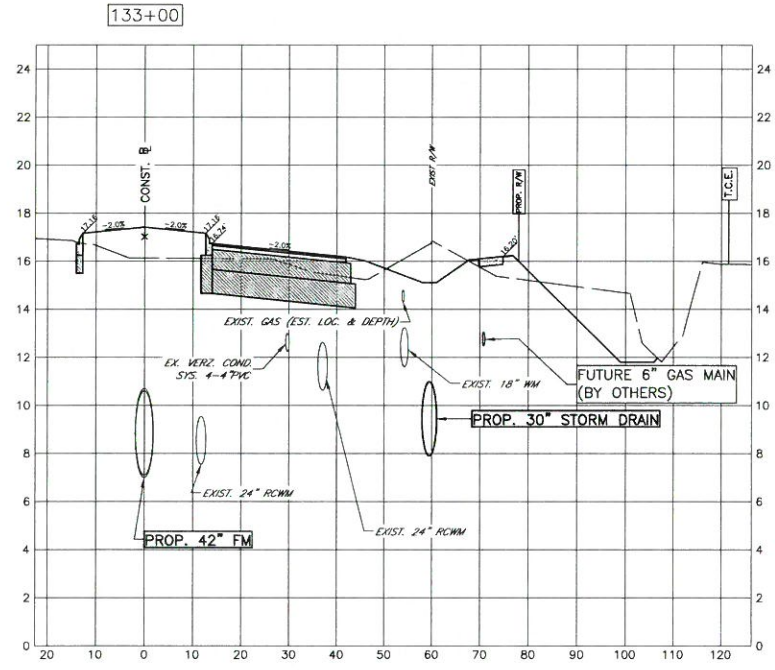
PROJECT #	383-6082960
SURVEY #	3525
SEC./TWN./RGE	16,17,18/35/17
VERT. SCALE	1"=4'
HORZ. SCALE	1"=20'

	BY	DATE
SURVEYED	HYATT/LSF	2001/2012
DESIGNED	LSF/JP	2001/2012
DRAWN	BLR	10/2012
CHECKED	CLM	02/2013

JOHN KENNEDY PARI, P.E.  
FLORIDA P.E. # 56368  
*John Pari*  
10/20/14  
Signature & Date

COPYRIGHT 2010 MANATEE COUNTY GOVERNMENT | s:\pww\_engineering\share\highway\_engineering\ROADS\53rd ave w\DWG\p\_design\53rd ave w Cross\_Secs.dwg | X-SEC: 10/19/2014 11:57 AM Bruce Robertson, 1:1, ANSI full bleed D (34.00 x 22.00 inches)

**53RD AVENUE WEST  
43RD ST. W. TO ROUNDABOUT  
CROSS SECTION**



NO.	REVISION DESCRIPTION	BY	DATE

PROJECT # 383-6082960  
 SURVEY # 3525  
 SEC./TWN./RGE 16,17,18/35/17  
 VERT. SCALE 1"=4'  
 HORZ. SCALE 1"=20'

BY	DATE
BYATT/LSF	2001/2012
LS/JP	2001/2012
BLR	10/2012
CLM	02/2013

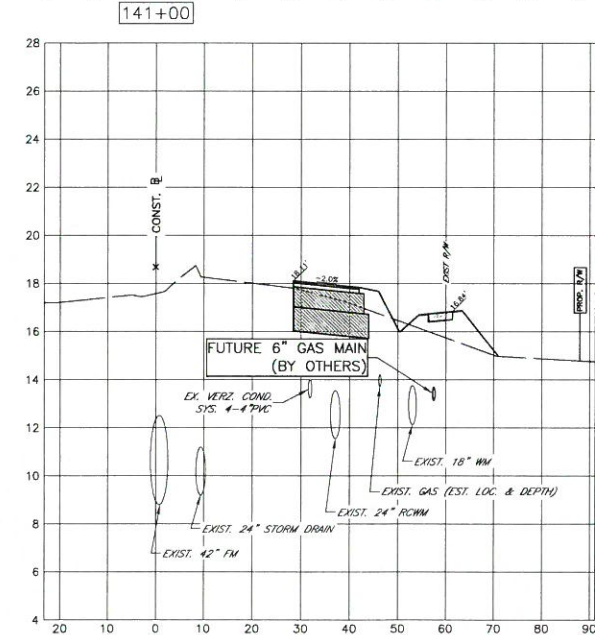
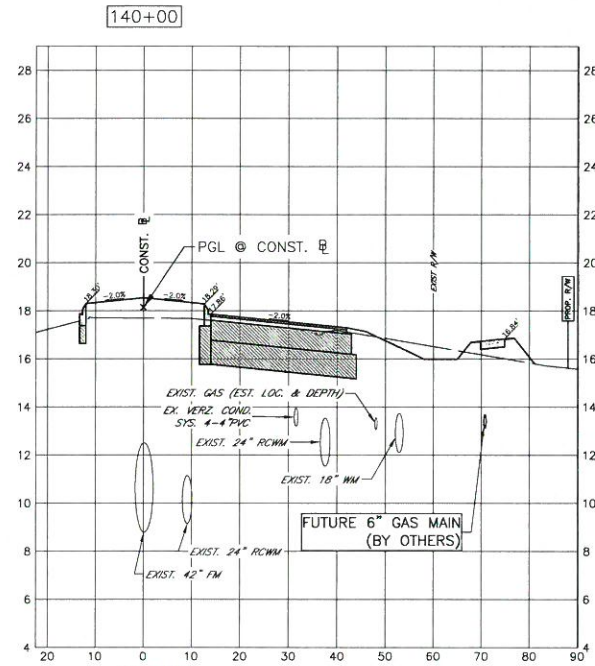
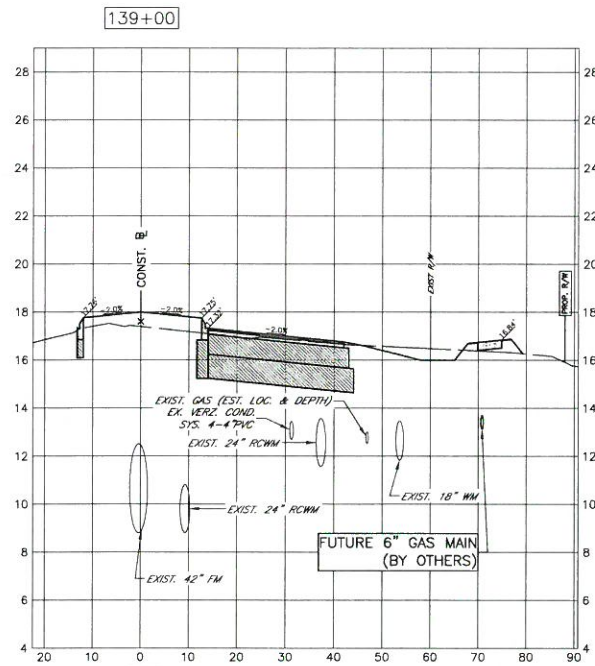
JOHN KENNEDY PARI, P.E.  
 FLORIDA P.E. # 56388  
*John Kennedy*  
 10/20/14  
 Signature & Date

COPYRIGHT 2010 MANATEE COUNTY GOVERNMENT s:\pww\engineering\shorn\highway engineering\ROADS\53rd ave w\DWG\p\_design\53rd Ave W Cross\_Secs.dwg,37 X-SEC. 10/09/2014 11:57 AM Bruce Robertson, 1:1, ANSI full bleed D (34.00 x 22.00 inches)



**53RD AVENUE WEST  
43RD ST. W. TO ROUNDABOUT  
CROSS SECTION**

Alignment: 53rd Ave W Construction Baseline



Tangent Data			
Description	PT Station	Northing	Easting
Start:	52+00.00	1132546.82	449992.006
End:	54+57.87	1132546.82	450249.671
Tangent Data			
Parameter	Value	Parameter	Value
Length:	257.87	Course:	S 89° 59' 53" E

Tangent Data			
Description	PT Station	Northing	Easting
Start:	54+57.87	1132546.82	450249.671
End:	62+00.00	1132541.26	450991.985
Tangent Data			
Parameter	Value	Parameter	Value
Length:	742.13	Course:	S 89° 34' 17" E

Tangent Data			
Description	PT Station	Northing	Easting
Start:	62+00.00	1132541.26	450991.985
End:	65+00.00	1132536.02	451291.939
Tangent Data			
Parameter	Value	Parameter	Value
Length:	300	Course:	S 88° 59' 54" E

Tangent Data			
Description	PT Station	Northing	Easting
Start:	65+00.00	1132536.02	451291.939
End:	74+70.65	1132526.57	452262.546
Tangent Data			
Parameter	Value	Parameter	Value
Length:	970.65	Course:	S 89° 26' 33" E

Tangent Data			
Description	PT Station	Northing	Easting
Start:	74+70.65	1132526.57	452262.546
End:	93+00.00	1132496.43	454091.645
Tangent Data			
Parameter	Value	Parameter	Value
Length:	1829.35	Course:	S 89° 03' 20" E

Tangent Data			
Description	PT Station	Northing	Easting
Start:	93+00.00	1132496.43	454091.645
End:	96+00.00	1132494.48	454391.639
Tangent Data			
Parameter	Value	Parameter	Value
Length:	300	Course:	S 89° 37' 43" E

Tangent Data			
Description	PT Station	Northing	Easting
Start:	96+00.00	1132494.48	454391.639
End:	101+00.00	1132486.24	454891.571
Tangent Data			
Parameter	Value	Parameter	Value
Length:	500	Course:	S 89° 03' 20" E

Tangent Data			
Description	PT Station	Northing	Easting
Start:	101+00.00	1132486.24	454891.571
End:	102+00.00	1132483.59	454991.536
Tangent Data			
Parameter	Value	Parameter	Value
Length:	100	Course:	S 88° 28' 58" E

Tangent Data			
Description	PT Station	Northing	Easting
Start:	102+00.00	1132483.59	454991.536
End:	108+00.00	1132473.7	455591.454
Tangent Data			
Parameter	Value	Parameter	Value
Length:	600	Course:	S 89° 03' 20" E

Tangent Data			
Description	PT Station	Northing	Easting
Start:	108+00.00	1132473.7	455591.454
End:	109+00.00	1132473.06	455691.452
Tangent Data			
Parameter	Value	Parameter	Value
Length:	100	Course:	S 89° 37' 43" E

Tangent Data			
Description	PT Station	Northing	Easting
Start:	109+00.00	1132473.06	455691.452
End:	127+72.86	1132442.19	457564.053
Tangent Data			
Parameter	Value	Parameter	Value
Length:	1872.86	Course:	S 89° 03' 20" E

Tangent Data			
Description	PT Station	Northing	Easting
Start:	127+72.86	1132442.19	457564.053
End:	181+14.06	1132399.69	462905.087
Tangent Data			
Parameter	Value	Parameter	Value
Length:	5341.2	Course:	S 89° 32' 39" E

NO.	REVISION DESCRIPTION	BY	DATE

PROJECT #	383-6082960
SURVEY #	3525
SEC./TWN./RGE	16,17,18/35/17
VERT. SCALE	1"=4'
HORZ. SCALE	1"=20'

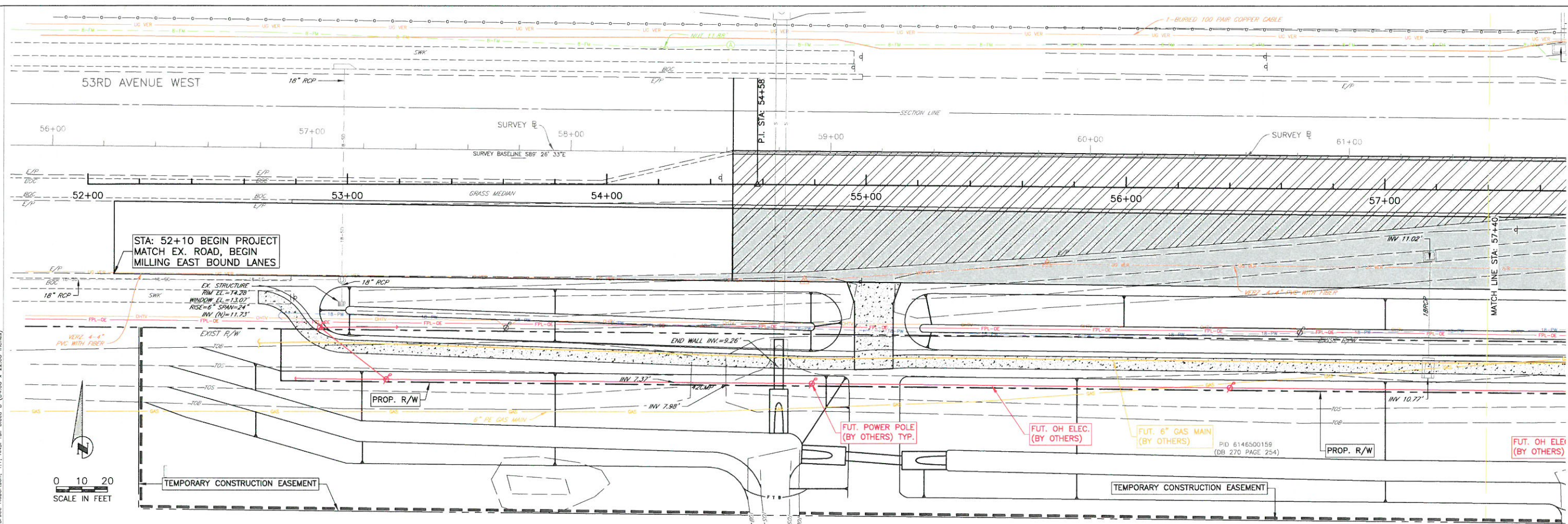
	BY	DATE
SURVEYED	HYATT/LSF	2001/2012
DESIGNED	LSF/JP	2001/2012
DRAWN	RLR	10/2012
CHECKED	CLM	02/2013

JOHN KENNEDY PARI, P.E.  
FLORIDA P.E. # 56368  
*John Pari*  
10/20/14  
Signature & Date

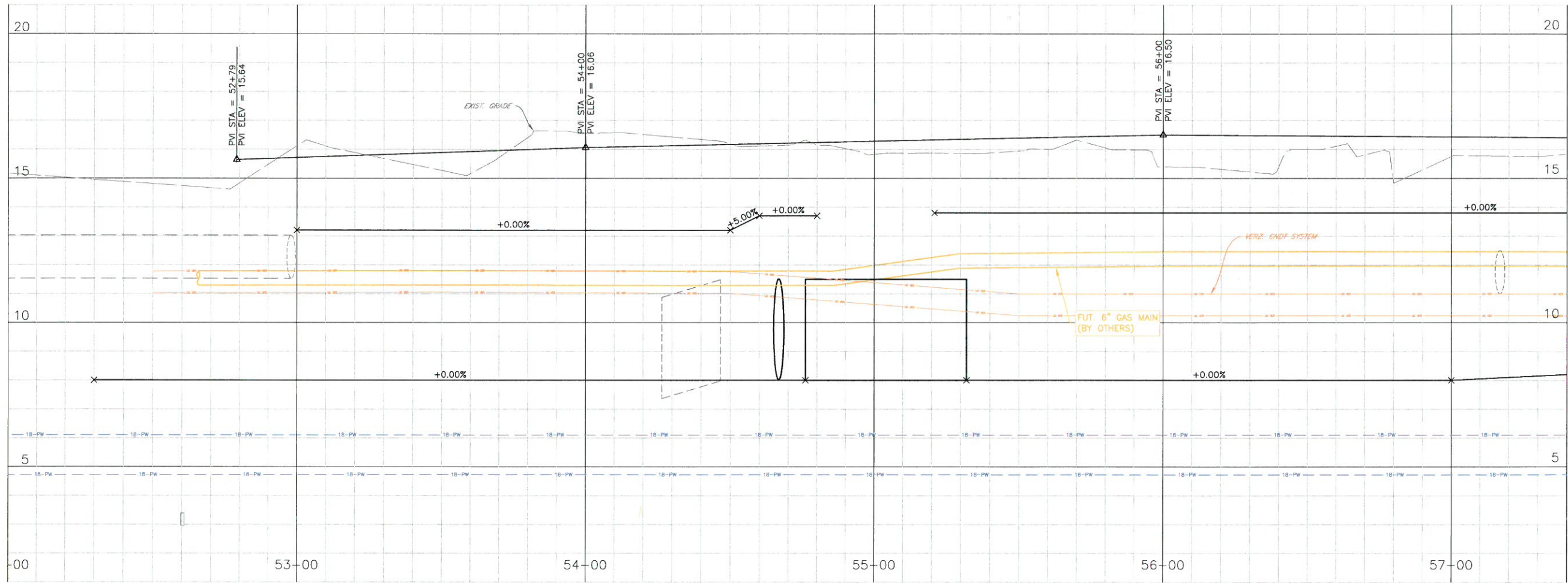
COPYRIGHT 2010 MANATEE COUNTY GOVERNMENT s:\pawd\_engineering\_share\highway\_engineering\ROADS\53rd Ave W Cross\_Section.dwg 53rd Ave W Cross\_Section.dwg 11:57 AM Bruce Robertson, 1:1, ANSI full bleed D (34.00 x 22.00 inches)



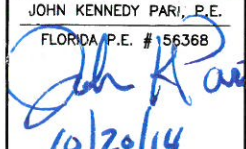
**53RD AVENUE WEST**  
**43RD ST. W. TO ROUNDABOUT**  
**UTILITY ADJUSTMENTS**



0 10 20  
SCALE IN FEET



NO.	REVISION DESCRIPTION	BY	DATE

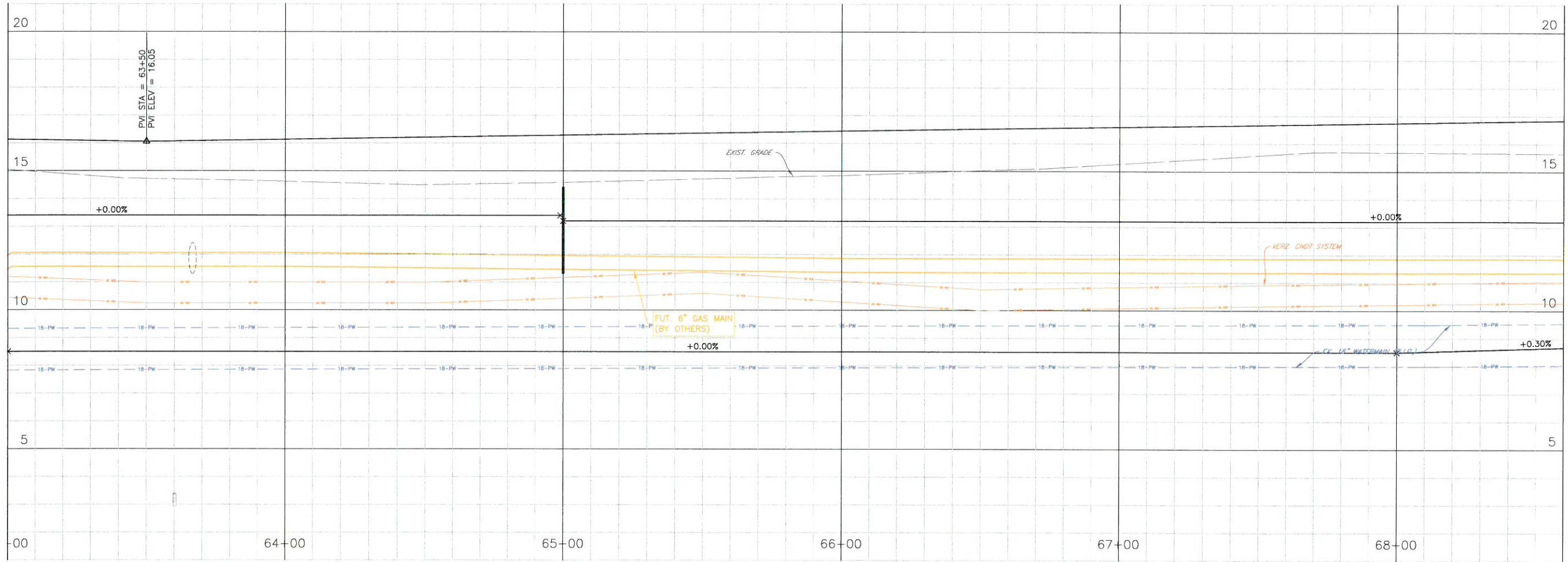
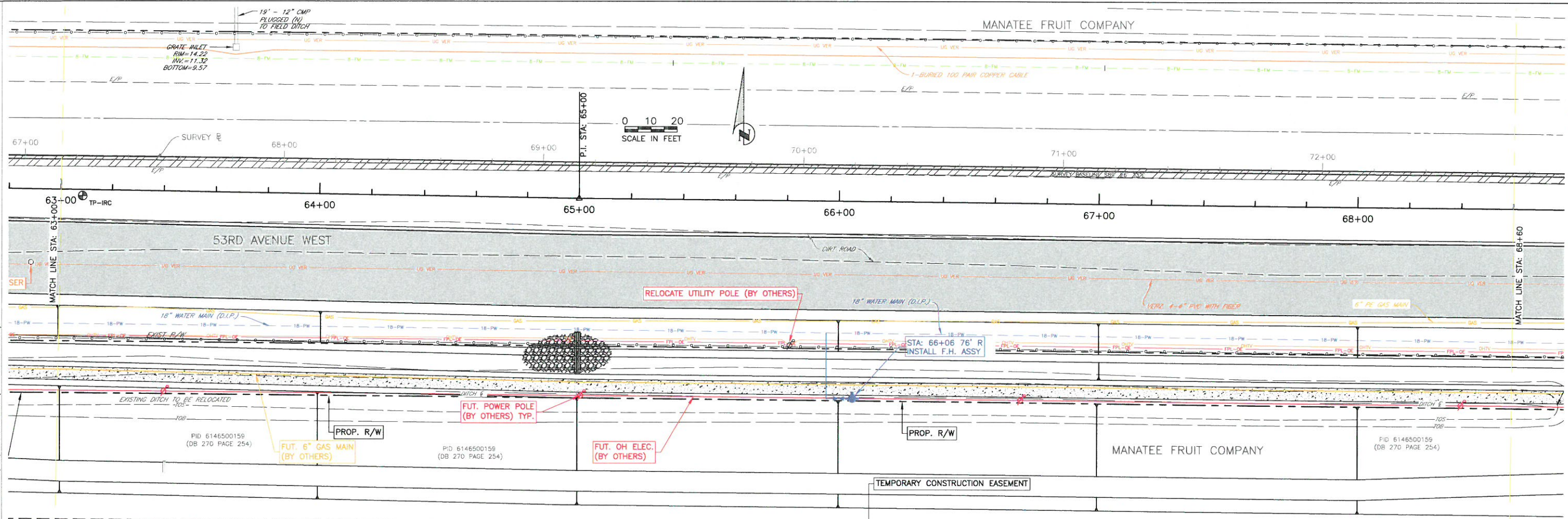
PROJECT #	383-6082960
SURVEY #	3825
SEC./TWN./RGE	16,17,18/35/17
VERT. SCALE	1"=2'
HORZ. SCALE	1"=20'
SURVEYED	BY: HYATT/LSF DATE: 2001/2012
DESIGNED	BY: LSF/JP DATE: 2001/2012
DRAWN	BY: BLR DATE: 10/2012
CHECKED	BY: CLM DATE: 02/2013
JOHN KENNEDY PARI, P.E. FLORIDA P.E. # 156368	
 10/20/14 Signature & Date	

COPYRIGHT 2010 MANATEE COUNTY GOVERNMENT s:\pww\engineering\above\highway engineering\ROADS\53rd ave\DWG\DWG\_P\Design\53rd Ave UAS.dwg,40 UAS\_10/17/2014 11:37 AM Bruce Robinson, 1:1, ANSI full bleed D (34.00 x 22.00 inches)





**53RD AVENUE WEST  
43RD ST. W. TO ROUNDABOUT  
UTILITY ADJUSTMENTS**



NO.	REVISION DESCRIPTION	BY	DATE

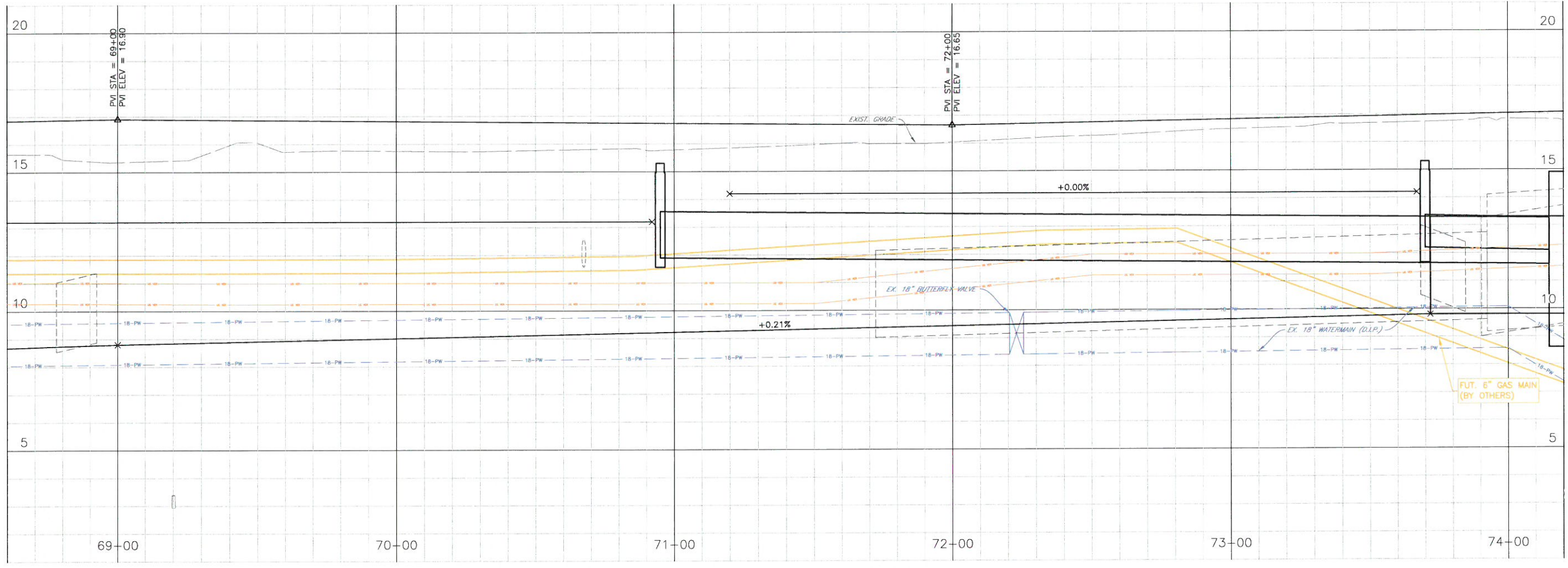
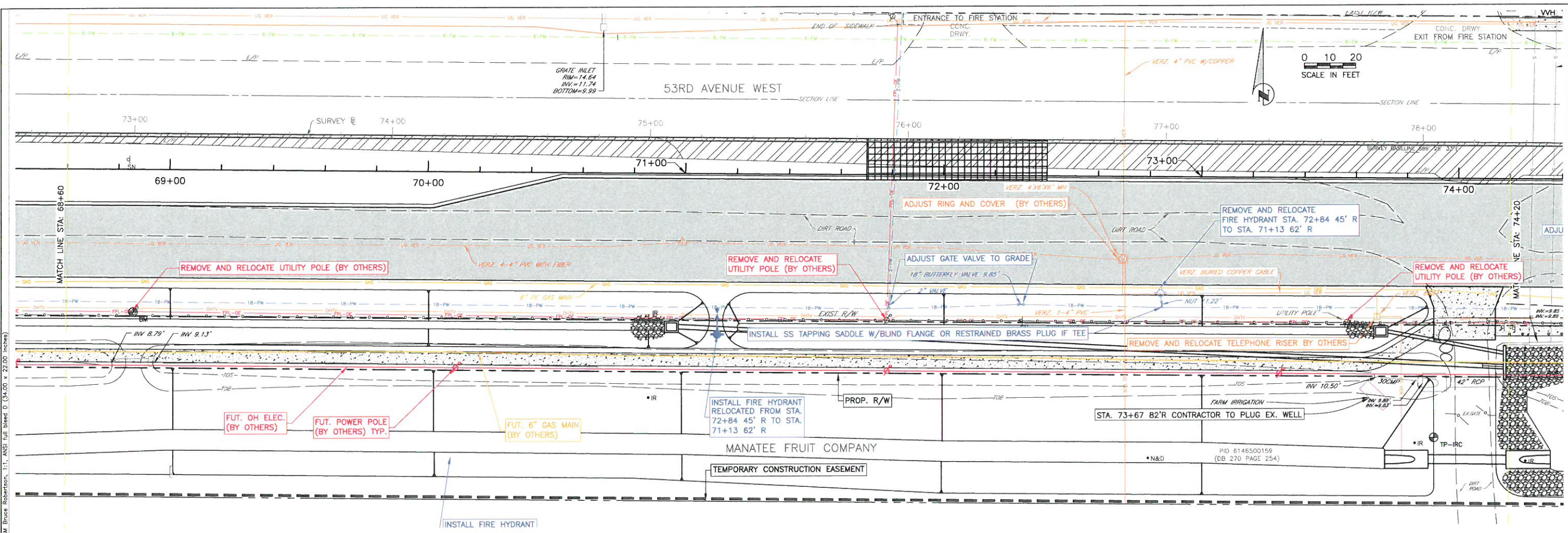
PROJECT #	383-6082960
SURVEY #	3825
SEC./TWN./RGE	16,17,18/35/17
VERT. SCALE	1"=2'
HORZ. SCALE	1"=20'

	BY	DATE
SURVEYED	HYATT/LSF	2001/2012
DESIGNED	LSF/JP	2001/2012
DRAWN	BLR	10/2012
CHECKED	CLM	02/2013

JOHN KENNEDY PARI, P.E.  
FLORIDA P.E. # 96368  
*John Parri*  
10/20/14  
Signature & Date

COPYRIGHT 2010 MANATEE COUNTY GOVERNMENT s:\pwr\engineering\share\highway\_engineering\ROADS\53rd Ave\DWG\_P\_Design\53rd Ave UAS.dwg,42 UAS\_10/17/2014 11:37 AM Bruce Robertson, I.T. ANSI full bleed D (34.00 x 22.00 inches)

**53RD AVENUE WEST  
43RD ST. W. TO ROUNDABOUT  
UTILITY ADJUSTMENTS**



NO.	REVISION DESCRIPTION	BY	DATE

PROJECT #	383-6082960
SURVEY #	3825
SEC./TWN./RGE	16,17,18/35/17
VERT. SCALE	1"=2'
HORIZ. SCALE	1"=20'
SURVEYED	HYATT/LSF 2001/2012
DESIGNED	LSI/JP 2001/2012
DRAWN	BLR 10/2012
CHECKED	CLM 02/2013

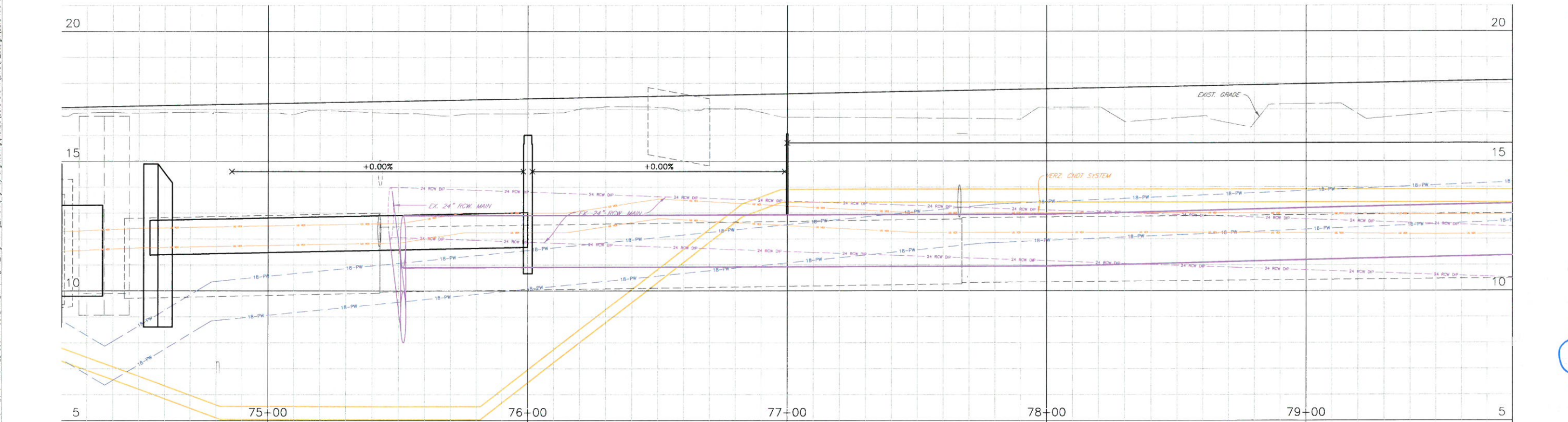
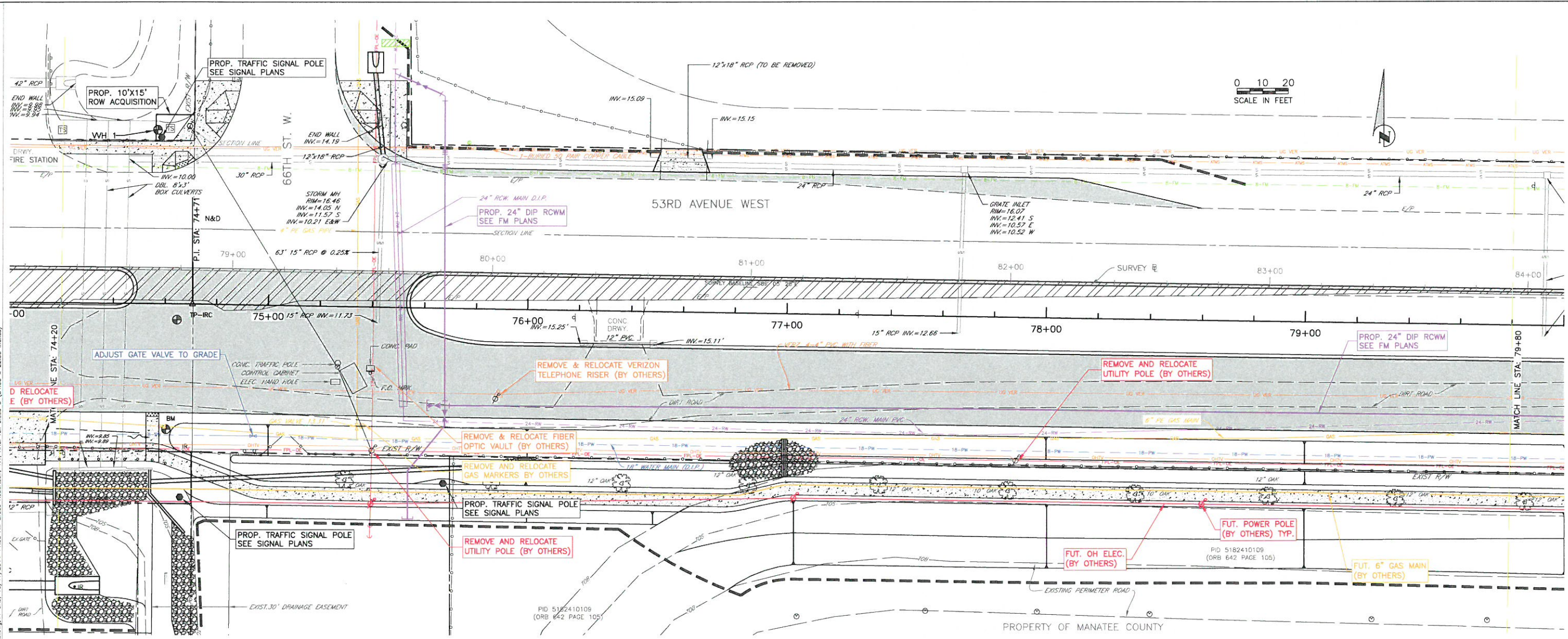
JOHN KENNEDY PARI, P.E.  
FLORIDA P.E. # 56368

*John Parri*  
10/20/14  
Signature & Date

COPYRIGHT 2010 MANATEE COUNTY GOVERNMENT. P:\proj\engineering\share\highway\engineering\ROADS\53rd Ave\DWG\53rd Ave\DWG\53rd Ave\DWG.dwg, 10/17/2014 11:38 AM Bruce Robertson, P.E., ANSI full bleed D (34.00 x 22.00 inches)



**53RD AVENUE WEST  
43RD ST. W. TO ROUNDABOUT  
UTILITY ADJUSTMENTS**



NO.	REVISION DESCRIPTION	DATE

PROJECT #	383-6082960
SURVEY #	3825
SEC./TWN./RGE	16,17,18/35/17
VERT. SCALE	1"=2'
HORIZ. SCALE	1"=20'
SURVEYED	BY: HAT/LSF DATE: 2001/2012
DESIGNED	LSF/JP DATE: 2001/2012
DRAWN	BLR DATE: 10/2012
CHECKED	CLM DATE: 02/2013

JOHN KENNEDY PARI, P.E.  
FLORIDA P.E. # 56358

*John Pari*  
10/2014  
Signature & Date

COPYRIGHT 2010 MANATEE COUNTY GOVERNMENT at:\pwc\_engineering\shawn\highway\_engineering\ROADS\53rd\_ave\DWG\53rd\_ave\DWG\_P\Design\53rd\_ave\DWG.dwg, 4/4 UAS, 10/17/2014 11:38 AM Bruce Robertson, 11 ANSI full bleed D (34.00 x 22.00 inches)