



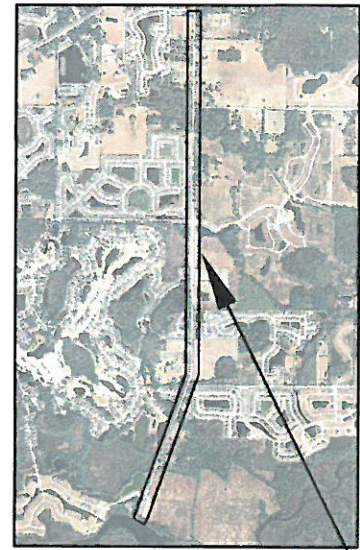
MANATEE COUNTY, FL FORT HAMER ROAD PHASE II US 301 TO FUTURE FORT HAMER BRIDGE 323-6054764

MANATEE COUNTY, FL
US 301 TO FUTURE FORT HAMER
BRIDGE
SIGNING & PAVEMENT MARKING COVER SHEET

SIGNING & PAVEMENT MARKING PLANS

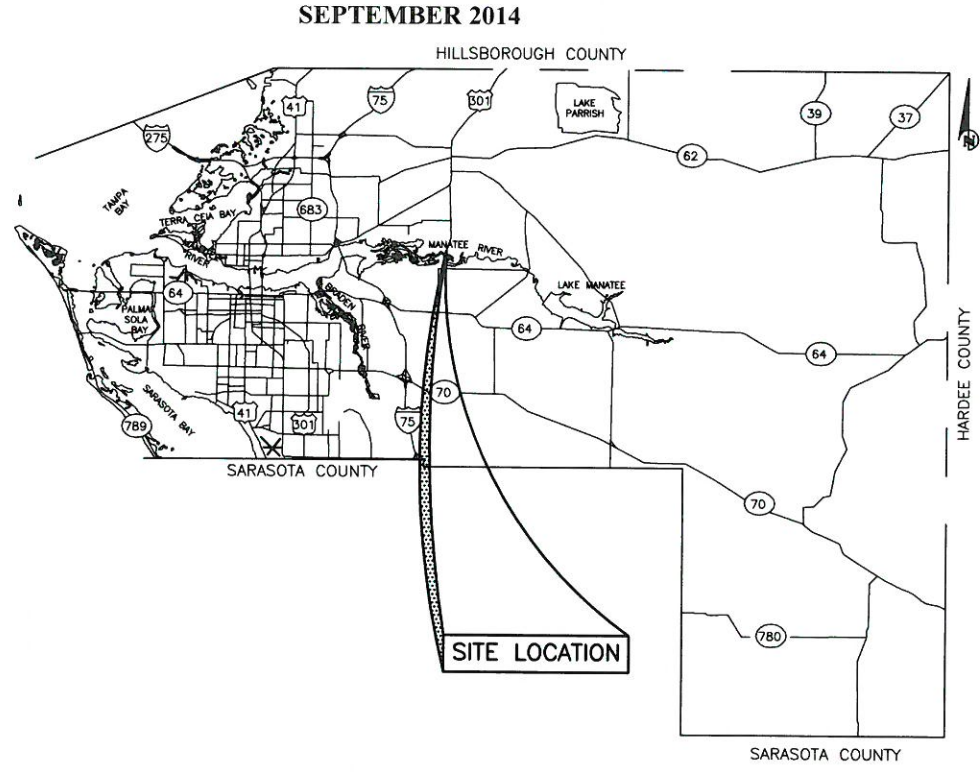
BID SET

NO.	INDEX OF SHEETS
1	COVER SHEET
2	GENERAL NOTES
3 - 14	SIGNING & PAVEMENT MARKING PLAN



VICINITY MAP
N.T.S.

PROJECT SITE



SITE LOCATION

PROJECT DESCRIPTION

PROJECT CONSISTS OF WIDENING THE EXISTING ROAD FROM 22' TO 24' WITH 8' SHOULDERS, RELOCATING EXISTING ROADSIDE DITCHES, AND ADDING A SIDEWALK ON THE WEST SIDE OF THE ROAD

NO.	REVISION DESCRIPTION	BY	DATE

PROJECT #	323-6054764
SURVEY #	---
SEC./TWN./RGE	7/35S/18E
SCALE	N.T.S.

DATE	
SURVEYED	
DESIGNED	
DRAWN	
CHECKED	
PAUL J. VILLALBAZ, P.E., PTOE	
FLORIDA P.E. # 76246	
STATE OF FLORIDA	
PROFESSIONAL ENGINEER	



Know what's below
Call before you dig

S:\P\010_Engineering\Share\Highway_Engineering\ROADS\Lot_Hamer_Road\DWG\TRAFFIC_PLANS\SIGNING AND PAVEMENT MARKING\14_Signing_Plan_Cover_Sheet.dwg, 11/17/2014 10:00 AM Kris Ripley, P.L. 11x17

GENERAL NOTES:

1. THESE PLANS HAVE BEEN PREPARED IN ACCORDANCE WITH AND ARE GOVERNED BY THE STATE OF FLORIDA DEPARTMENT OF TRANSPORTATION (FDOT), STANDARD SPECIFICATIONS FOR ROAD AND BRIDGE CONSTRUCTION (DATED 2014), AND FLORIDA DEPARTMENT OF TRANSPORTATION DESIGN STANDARDS (DATED 2014), AND THE FHWA MANUAL OF UNIFORM TRAFFIC CONTROL DEVICES (MUTCD) 2009 EDITION.
2. PAVEMENT MARKING SHALL BE PLACED AS SHOWN IN THE PLANS AND THE APPROPRIATE FDOT DESIGN STANDARDS INDEX.
3. PAVEMENT MARKING DIRECTIONAL ARROWS SHALL BE SPACED AS PER FDOT DESIGN STANDARD INDEX NO. 17346.
4. IT SHALL BE THE RESPONSIBILITY OF THE CONTRACTOR TO VERIFY THE LENGTH OF COLUMN SUPPORTS IN THE FIELD PRIOR TO FABRICATION.
5. REFER TO FDOT DESIGN STANDARD INDEX NO. 17352 FOR RETRO-REFLECTIVE PAVEMENT MARKER PLACEMENT DETAILS.
6. ALL PERMANENT PAVEMENT MARKINGS PLACED WITHIN THE MANATEE COUNTY RIGHT OF WAY SHALL BE THERMOPLASTIC EXCEPT WHEN OTHERWISE NOTED IN PLANS WHERE PAINT IS SPECIFIED.
7. ALL THERMOPLASTIC PAVEMENT MARKINGS SHALL BE CERTIFIED LEAD FREE.
8. TEMPORARY PAINTED PAVEMENT MARKINGS SHALL BE INSTALLED PRIOR TO OPENING LANES TO TRAFFIC. PAVEMENT MARKINGS SHALL BE PLACED AS SHOWN IN THE PLANS AND THE APPROPRIATE FDOT DESIGN STANDARDS INDEX.
9. EXISTING PAVEMENT MARKINGS WHICH CONFLICT WITH THE PROPOSED PAVEMENT MARKINGS SHALL BE REMOVED USING AN EDCO TLR-7 GRINDER OR EQUAL. NO SCAR RESULTING FROM THE MARKING REMOVAL SHALL BE DEEPER THAN 1/4" AS MEASURED FROM THE SURROUNDING SURFACE TO THE LOWEST POINT IN THE REMOVED AREA. HYDROBLASTING IS NOT ALLOWED.
10. ALL PAVEMENT MARKINGS SHALL MEET THE CRITERIA SPECIFIED IN THE FDOT STANDARD SPECIFICATIONS FOR ROAD AND BRIDGE CONSTRUCTION, 2014 EDITION.
11. ALL SIGNS SHALL BE INSTALLED ACCORDING TO THE LATEST FDOT DESIGN STANDARDS INDEX AND FDOT STANDARD SPECIFICATIONS FOR ROAD AND BRIDGE CONSTRUCTION, 2014 EDITION.
12. SIGN LOCATIONS SHOWN ARE APPROXIMATE AND MAY REQUIRE FIELD ADJUSTMENT.
13. ANY EXISTING SIGN TO REMAIN THAT IS DISTURBED DURING CONSTRUCTION SHALL BE RESET TO CURRENT STANDARDS FOR HEIGHT, OFFSET AND METHOD OF INSTALLATION.
14. CAUTION SHALL BE EXERCISED WHILE RELOCATING EXISTING SIGNS SO AS TO PREVENT DAMAGE TO THE SIGNS. IF THE SIGNS ARE DAMAGED BEYOND USE, AS DETERMINED BY THE ENGINEER, THEY SHALL BE REPLACED BY THE CONTRACTOR AT THE CONTRACTOR'S EXPENSE.
15. CONTRACTOR SHALL USE W-SHAPED STEEL POSTS FOR MULTI-POST SIGNS. ALL COLUMNS (POSTS) FOR SINGLE COLUMN GROUND SIGNS SHALL BE ALUMINUM ROUND TUBE.
16. ALL SINGLE POST AND MULTI-POST SIGNS WITHIN THE LIMITS OF THE PROJECT SHALL BE REMOVED UNLESS OTHERWISE SHOWN IN THE PLANS. REMOVAL INCLUDES REMOVING FOUNDATIONS AND BACKFILLING THE HOLES LEFT AFTER REMOVAL.
17. ANY SIGN MOUNTED OVER A SIDEWALK SHALL HAVE A STANDARD VERTICAL CLEARANCE OF 8 FEET.
18. STREET NAME SIGNS THAT ARE NOT SHOWN IN THE GUIDE SIGN WORK SHEET SECTION OF THE PLANS SHALL BE AS PER MANATEE COUNTY DESIGN REQUIREMENTS.

19. SIGNS THAT ARE EMBEDDED IN ASPHALT/CONCRETE SHALL BE INSTALLED IN PIPE SLEEVES.
20. THE CONTRACTOR SHALL BE RESPONSIBLE FOR THE DISPOSAL OF ALL SIGNS THAT ARE TO BE PERMANENTLY REMOVED IN THIS PROJECT.
21. APPLY THERMOPLASTIC AS THE FINAL TRAFFIC STRIPES AND MARKINGS A MINIMUM OF 14 DAYS AFTER THE FIRST APPLICATION OF PAINT, BUT PRIOR TO FINAL ACCEPTANCE OF THE PROJECT.

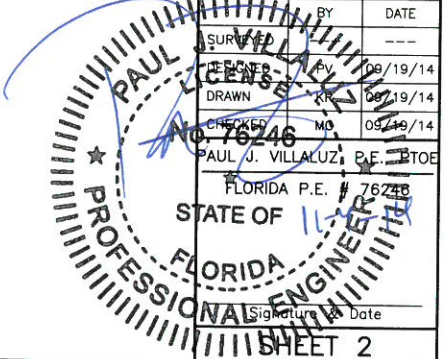


**MANATEE COUNTY, FL
US 301 TO FUTURE FORT HAMER
BRIDGE
GENERAL NOTES**

NO.	REVISION DESCRIPTION	BY	DATE

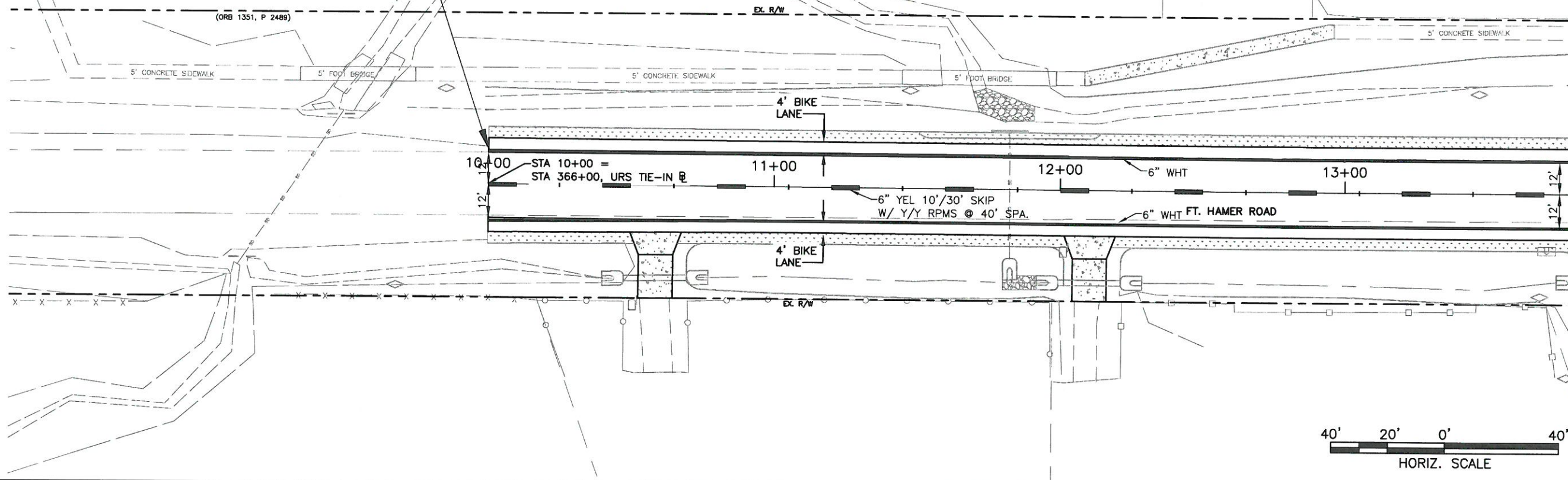
PROJECT # 323-6054764
 SURVEY # ---
 SEC./TWN./RGE 7/35S/18E
 SCALE N.T.S.

BY	DATE
SURVEYED	---
DESIGNED	08/19/14
DRAWN	08/19/14
CHECKED	08/19/14
PAUL J. VILLALUZ, P.E.	08/19/14
FLORIDA P.E. # 76248	
STATE OF FLORIDA	
PROFESSIONAL ENGINEER	



S:\VWD\Engineering\State Highway\Engineering\ROADS\Fort Hamer\Road\TRAFFIC PLANS\SIGNING AND PAVEMENT MARKINGS\FL SPN COVER ETC.dwg GEN NOTES, 11/27/2014 10:00 AM Kevin Rabey, 1:1, 11x17

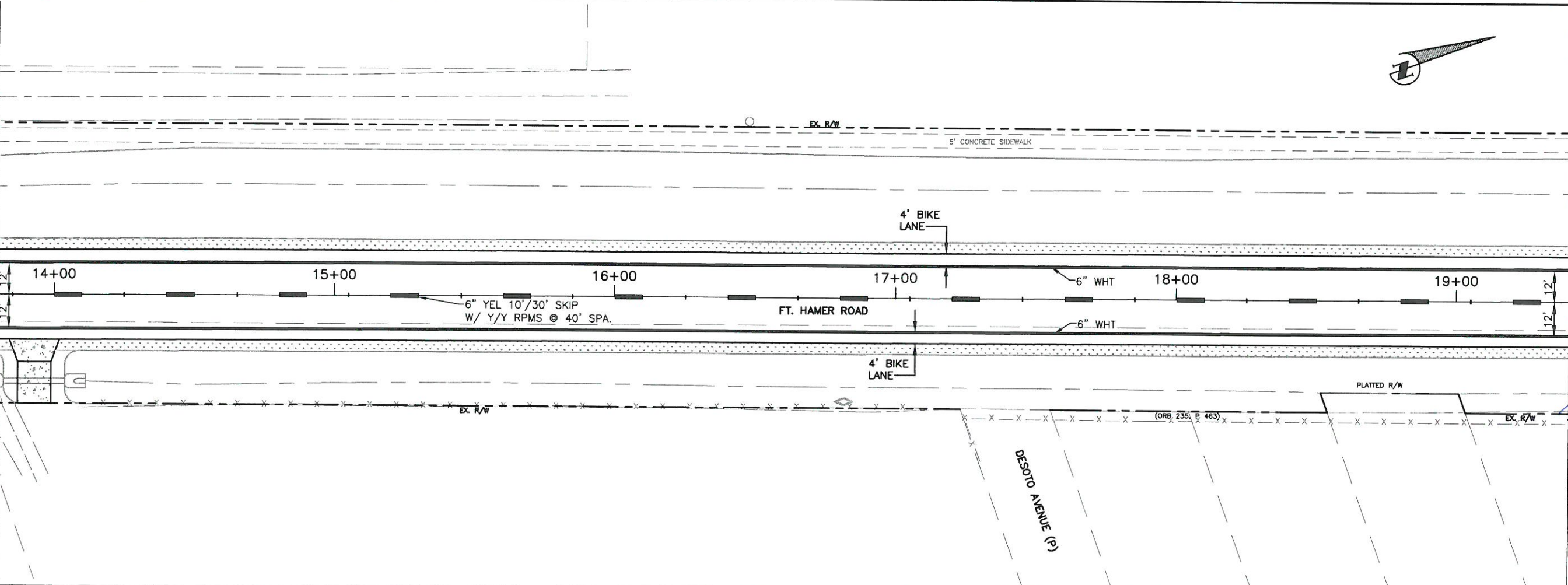
BEGIN SIGNING AND PAVEMENT MARKING STA. 10+00 (MATCH EXISTING PAVEMENT MARKINGS)



MATCH LINE STA. 13+80

**FORT HAMER ROAD PHASE II
US 301 TO FUTURE FORT HAMER
BRIDGE
SIGNING AND PAVEMENT MARKING**

MATCH LINE STA. 13+80



MATCH LINE STA. 19+40

NO.	REVISION DESCRIPTION	BY	DATE

PROJECT #	323-6054764
SURVEY #	5303
SEC./TWN./RGE	7/35S/18E
SCALE	AS NOTED

SURVEYED	BY	DATE
DESIGNED	PAUL	09/11/14
DRAWN	PAUL	09/18/14
CHECKED	PAUL	09/18/14

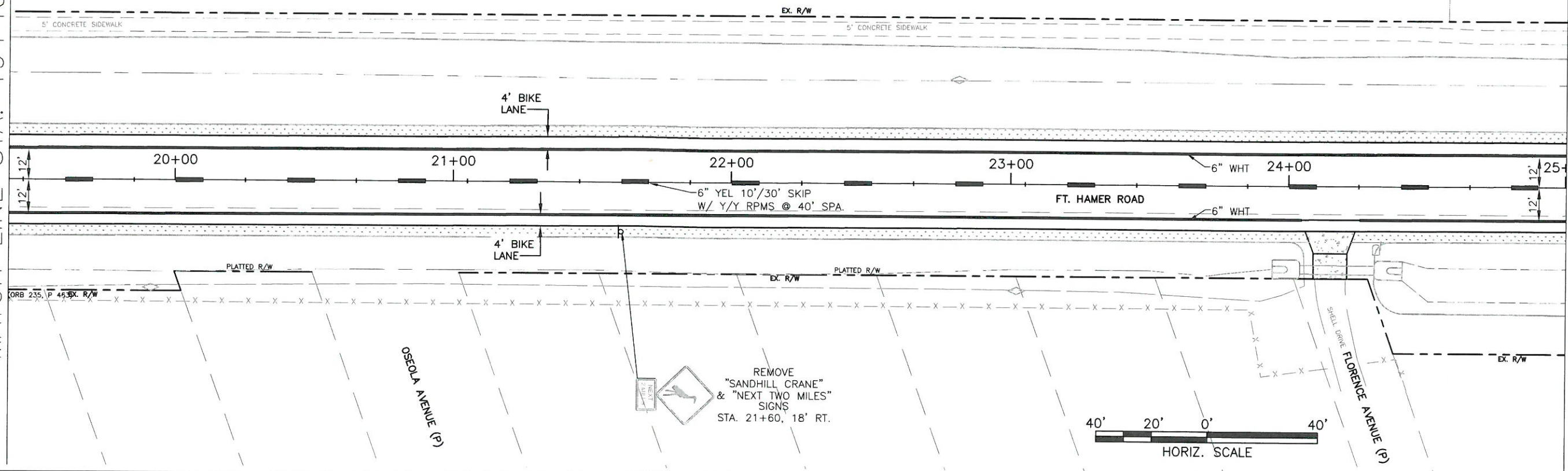
PAUL VILLALUZ, P.E., PTOE
FLORIDA P.E. # 46722
STATE OF FLORIDA
PROFESSIONAL ENGINEER

S:\PND_Engineering\Shore\Highway_Engineering\ROADS\Fort Hamer Road\DWG\TRAFFIC PLANS\SIGNING AND PAVEMENT MARKING\FH_SPM.dwg, SPM-3, 11/3/2014, 10:37 AM Kara Ripley, 1:1, 11x17

**FORT HAMER ROAD PHASE II
US 301 TO FUTURE FORT HAMER
BRIDGE
SIGNING AND PAVEMENT MARKING**

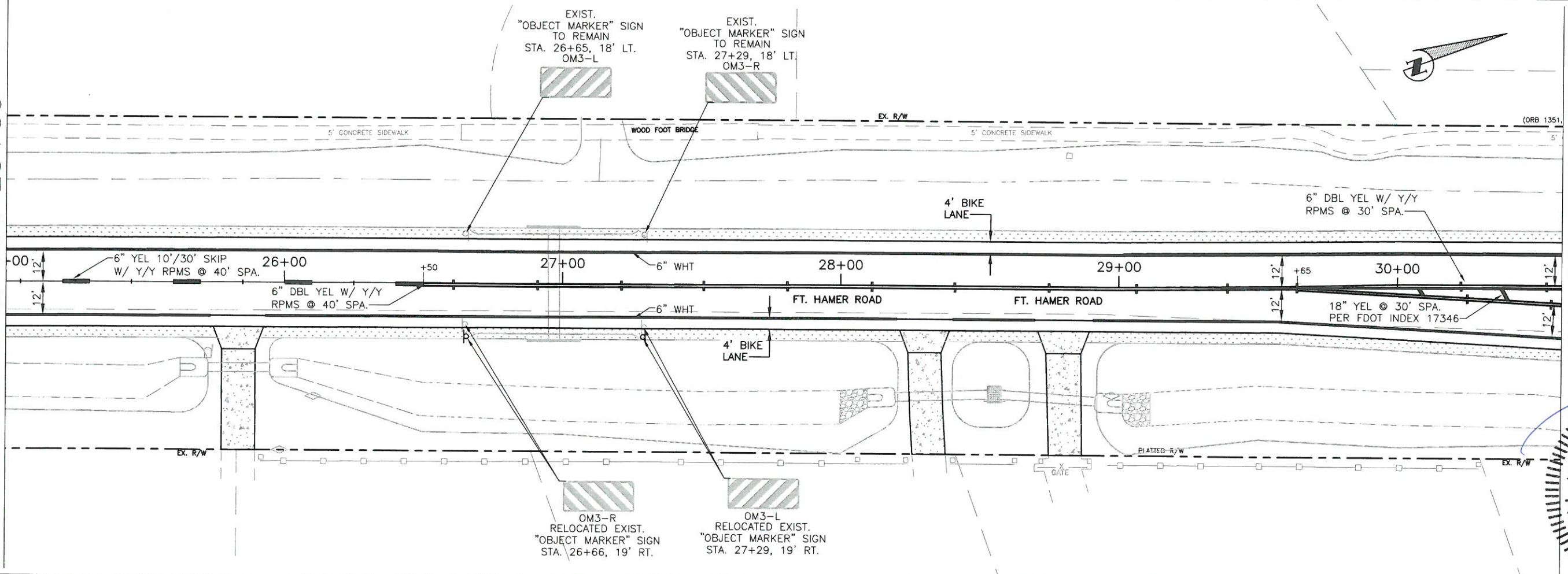
MATCH LINE STA. 19+40

MATCH LINE STA. 25+00



MATCH LINE STA. 25+00

MATCH LINE STA. 30+60



NO.	REVISION DESCRIPTION	BY	DATE

PROJECT #	323-6054764
SURVEY #	5303
SEC./TWN./RGE	7/35S/18E
SCALE	AS NOTED

BY	DATE
DESIGNED	09/11/14
CHECKED	09/15/14
APPROVED	09/15/14

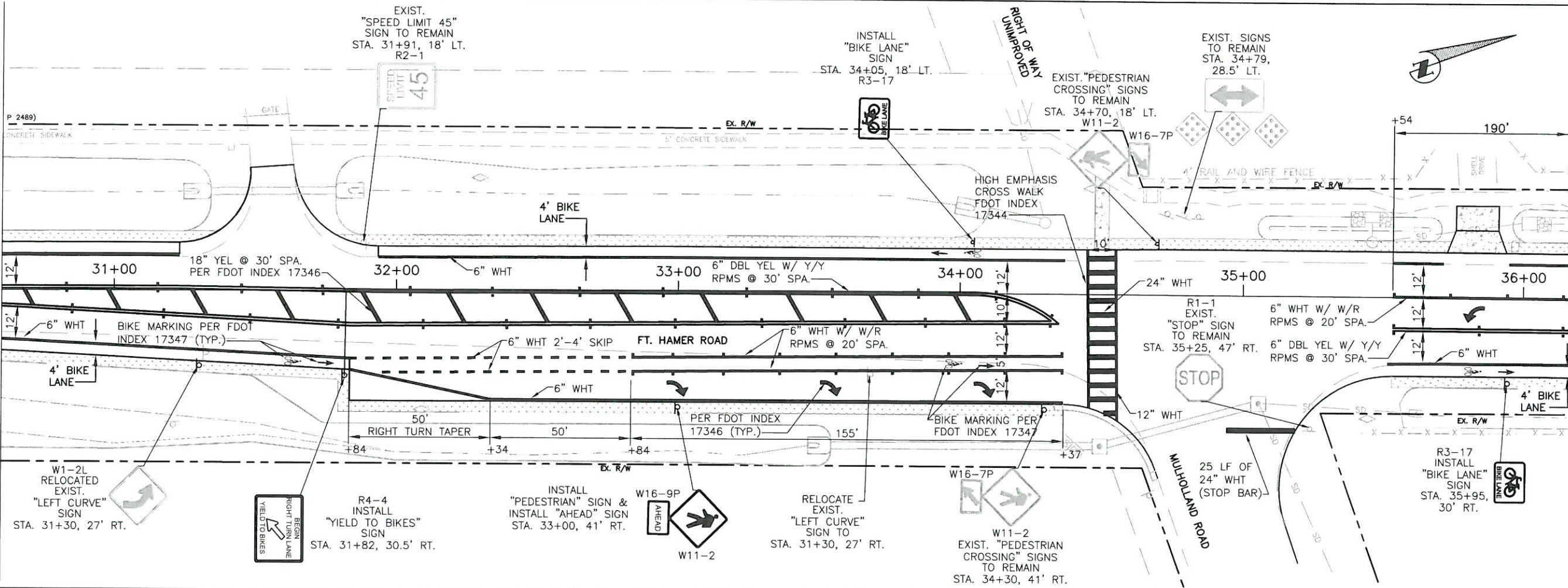
PROFESSIONAL ENGINEER
STATE OF FLORIDA
No. 76246, P.E., P.T.O.E.
FLORIDA P.E. # 4627
SHEET 4

S:\P\WD_Engineering\Shore\Highway_Engineering\ROADS\Fort Hamer Road\TRAFFIC PLANS\SIGNING AND PAVEMENT MARKING\FI_Signing_SMA-4_11/13/2014_10:37 AM Kevin Ripley, I.T. 11x17

**FORT HAMER ROAD PHASE II
US 301 TO FUTURE FORT HAMER
BRIDGE
SIGNING AND PAVEMENT MARKING**

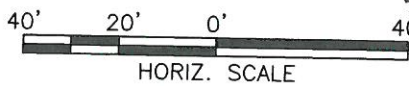
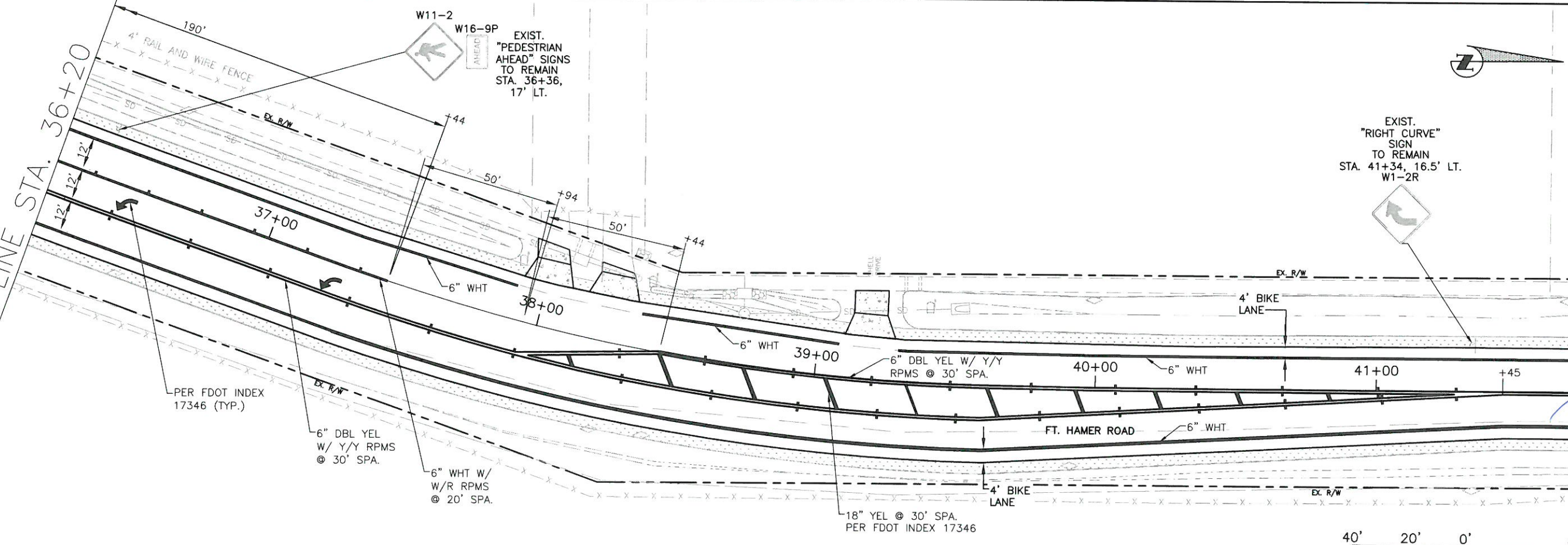
MATCH LINE STA. 30+60

MATCH LINE STA. 36+20



MATCH LINE STA. 36+20

MATCH LINE STA. 41+80



NO.	REVISION DESCRIPTION	BY	DATE

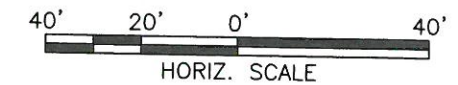
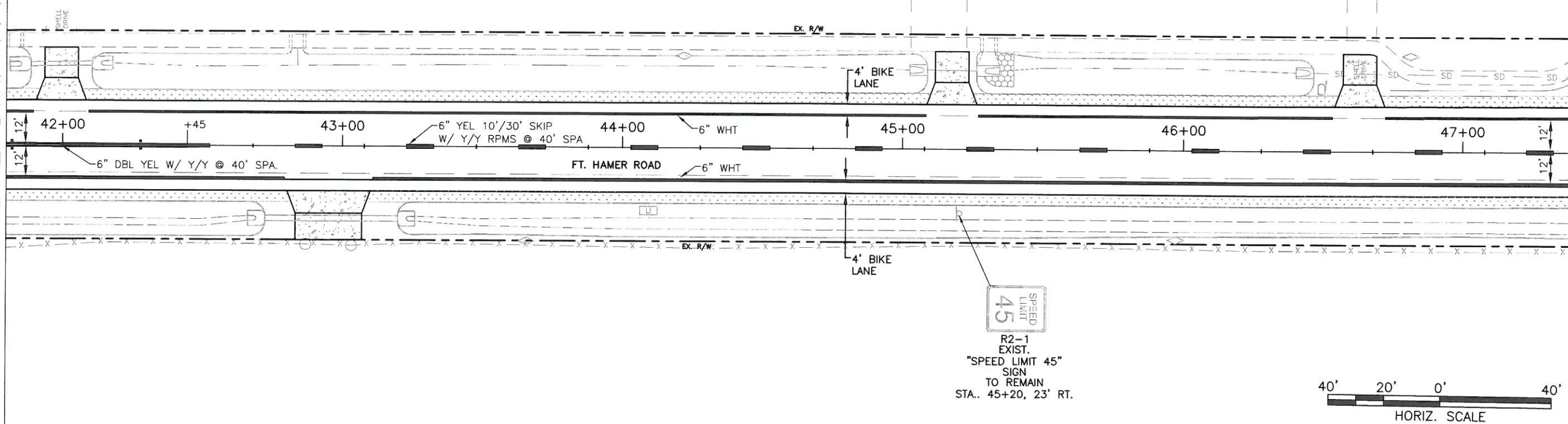
PROJECT #	323-6054764
SURVEY #	5303
SEC./TWN./RGE	7/35S/18E
SCALE	AS NOTED
BY	DATE
SURVEYED	11/14
DESIGNED	11/14
DRAWN	11/14
CHECKED	09/14
PAUL VELAZQUEZ, P.E., P.T.O.E.	
FLORIDA P.E. # 46777	
STATE OF FLORIDA	
PROFESSIONAL ENGINEER	

S:\P\WD_Engineering\Share\Highway_Engineering\ROADS\Fort Hamer Road\TWO LANE CC PLANS\SIGNING AND PAVEMENT MARKING\Fort Hamer Road Phase II.dwg, STA. 30+60 TO 41+80, 11/14/14

**FORT HAMER ROAD PHASE II
US 301 TO FUTURE FORT HAMER
BRIDGE
SIGNING AND PAVEMENT MARKING**

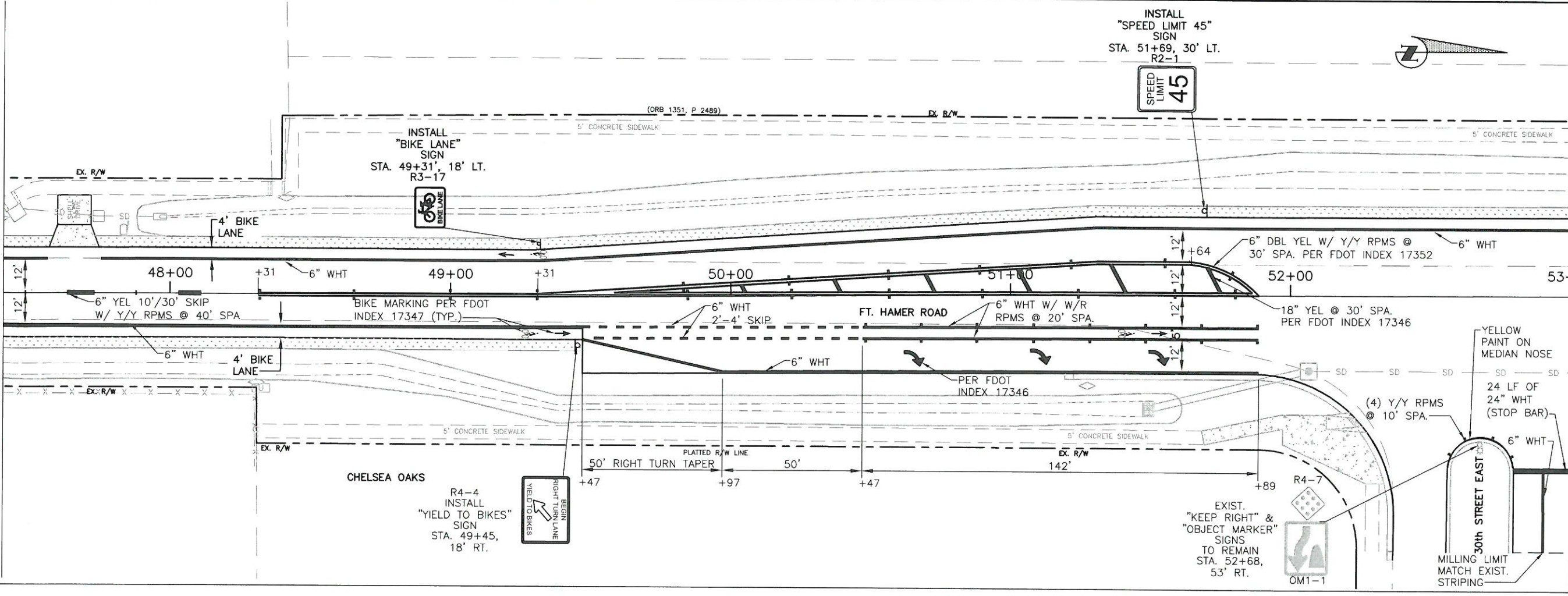
MATCH LINE STA. 41+80

MATCH LINE STA. 47+40



MATCH LINE STA. 47+40

MATCH LINE STA. 53+00



NO.	REVISION DESCRIPTION	BY	DATE

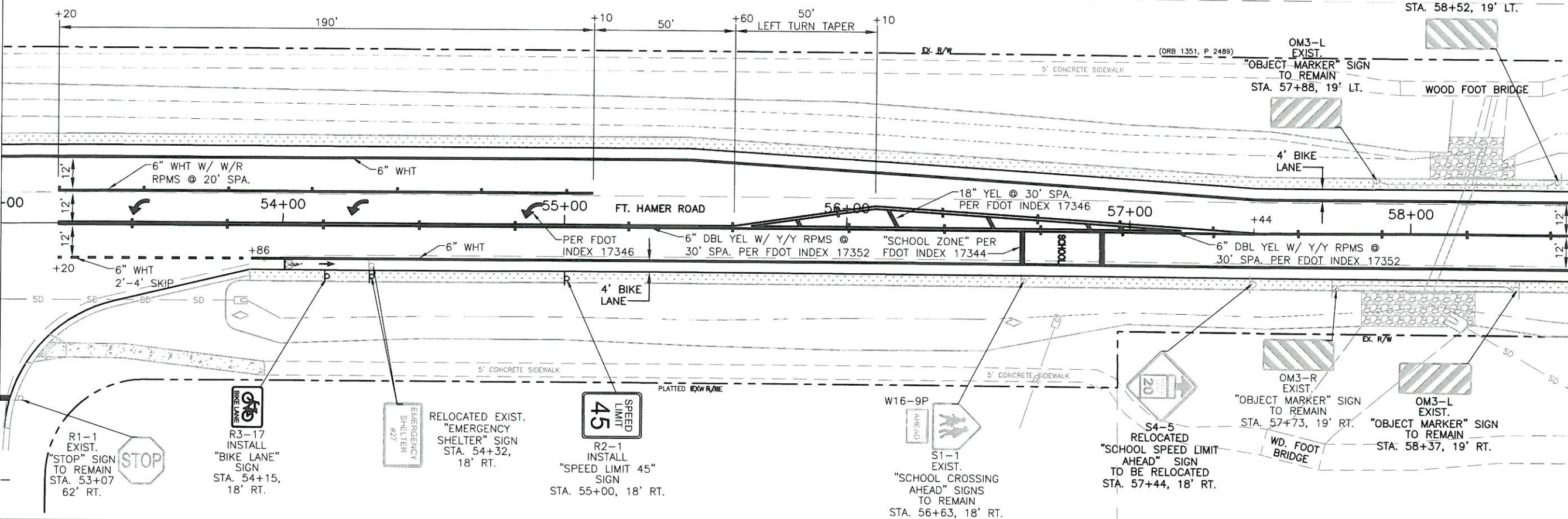
PROJECT #	323-6054764
SURVEY #	5303
SEC./TWN./RGE	7/35S/18E
SCALE	AS NOTED
SURVEYED	DATE
DESIGNED	DATE
DRAWN	DATE
CHECKED	DATE
PAUL VILLALUZ, P.E.	PTOE
FLORIDA P.E. # 46777	
STATE OF FLORIDA	
PROFESSIONAL ENGINEER	

S:\PWD_Engineering\Shore\Highway_Engineering\Roads\Fort Hamer_Road\DWG\TRAFFIC PLANS\SIGNING AND PAVEMENT MARKING\FH_Signing_Pavement_Signs.dwg, SPN-6, 11/17/2014, 10:37 AM Acacia Ripley, 1:1, 11x17



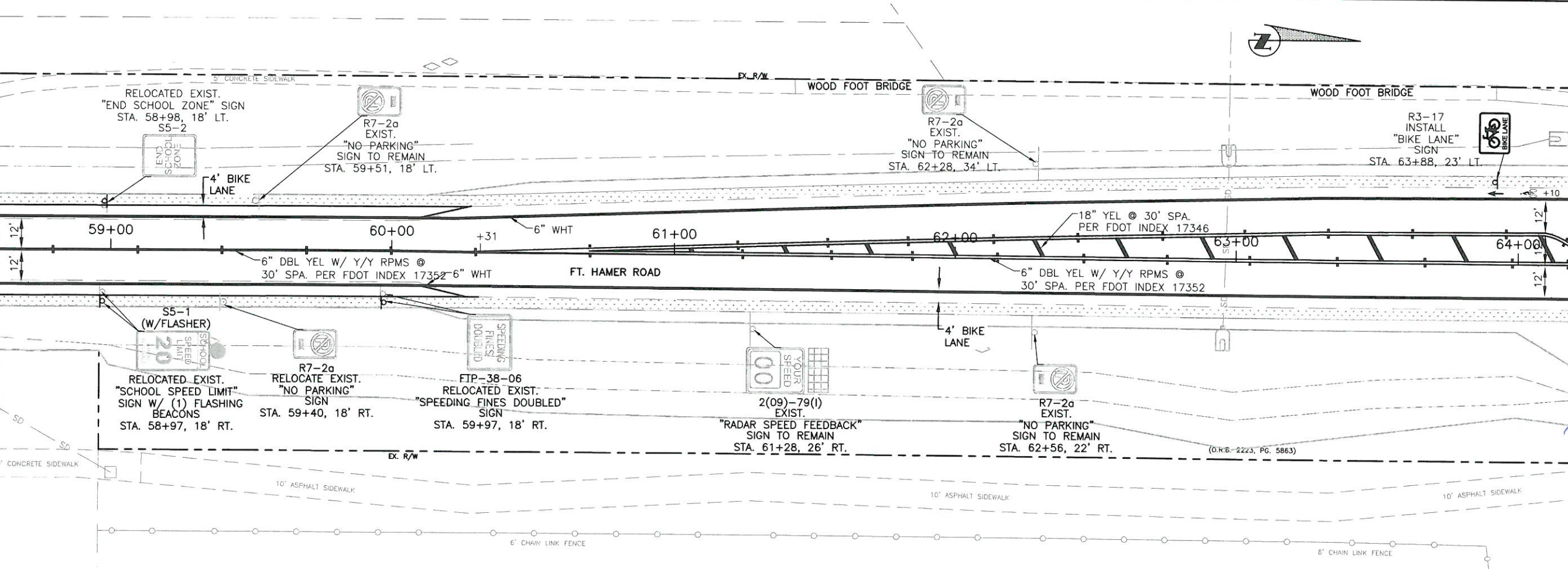
**FORT HAMER ROAD PHASE II
US 301 TO FUTURE FORT HAMER
BRIDGE**
SIGNING AND PAVEMENT MARKING

MATCH LINE STA. 53+00



MATCH LINE STA. 58+60

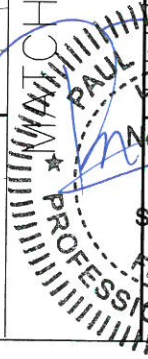
MATCH LINE STA. 58+60



MATCH LINE STA. 64+20

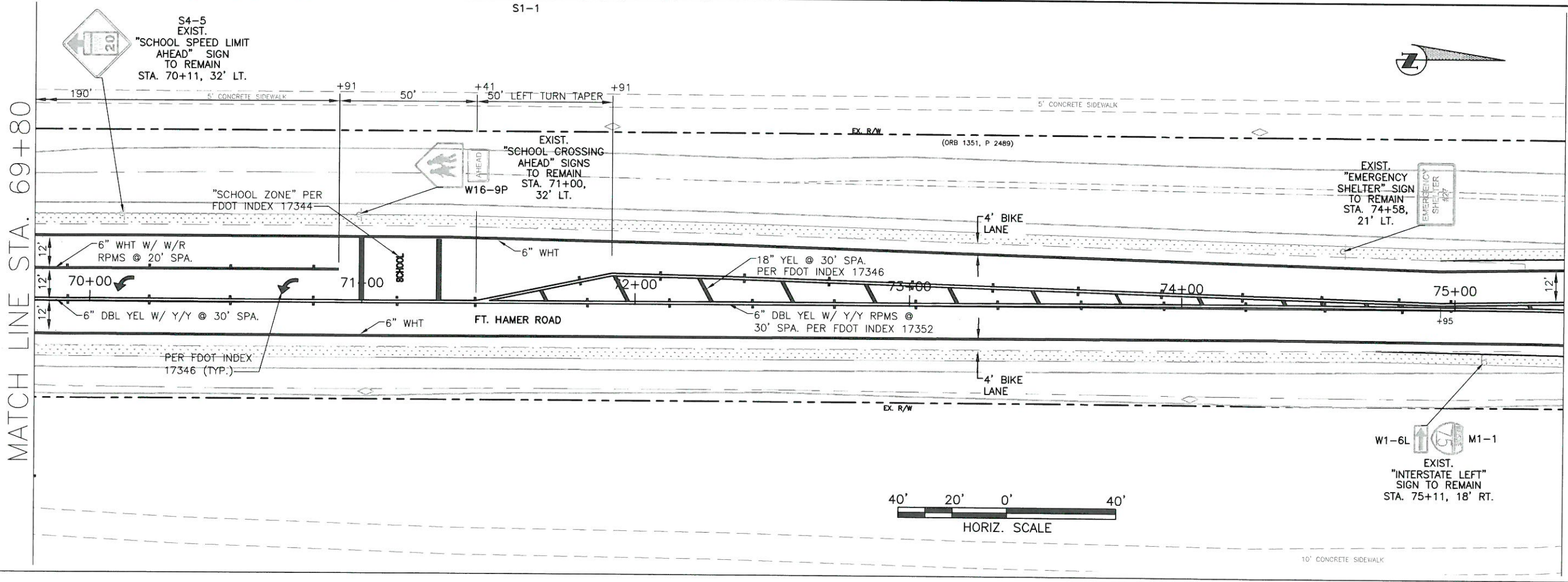
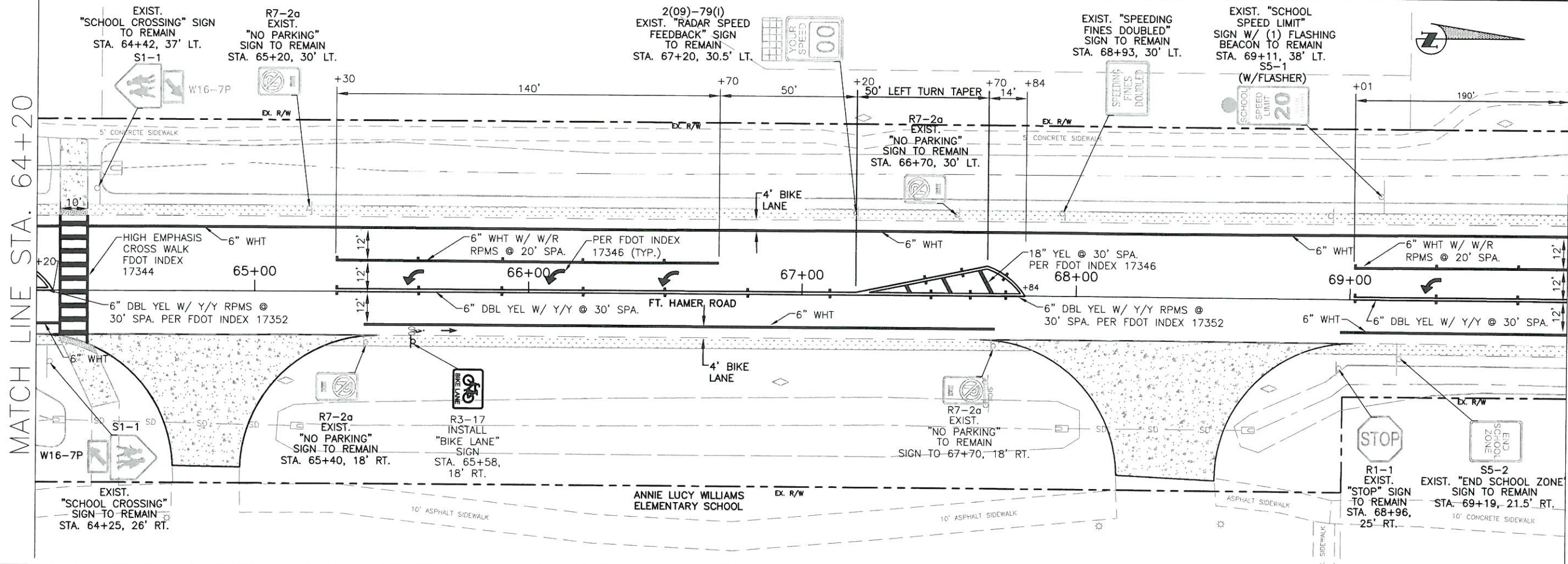
NO.	REVISION DESCRIPTION	BY	DATE

PROJECT #	323-6054764
SURVEY #	5303
SEC./TWN./RGE	7/35S/18E
SCALE	AS NOTED
BY	DATE
DESIGNED	09/11/14
DRAWN	09/18/14
CHECKED	09/28/14
PAUL J. GAYDOS, P.E., F.P.O.E.	10-4-14
FLORIDA P.E. # 48772	
STATE OF FLORIDA	
PROFESSIONAL ENGINEER	



S:\P\WD_Engineering\Shore\Highway_Engineering\ROADS\Fort_Hamer_Road\DWG\TRAFFIC_PLANS\SIGNING AND PAVEMENT MARKING\FH_SPM.dwg, SEN=7, 11/13/2014, 10:38 AM, Kento Ripley, 1.1, 11x17

**FORT HAMER ROAD PHASE II
US 301 TO FUTURE FORT HAMER
BRIDGE
SIGNING AND PAVEMENT MARKING**



MATCH LINE STA. 64+20

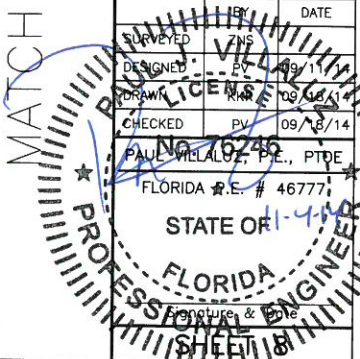
MATCH LINE STA. 69+80

MATCH LINE STA. 69+80

MATCH LINE STA. 75+40

NO.	REVISION DESCRIPTION	BY	DATE

PROJECT #	323-6054764
SURVEY #	5303
SEC./TWN./RGE	7/35S/18E
SCALE	AS NOTED
DATE	
DESIGNED	
DRAWN	
CHECKED	
PAUL M. ALLEN, P.E., PTDE	
FLORIDA P.E. # 46777	
STATE OF FLORIDA	



S:\P\WD_Engineering_Shore\Highway_Engineering\ROADS\Fort Hamer Road\DWG\TRAFFIC PLANS\SIGNING AND PAVEMENT MARKING\PL1_Sign_Pavement_Markings.dwg, 11/13/2014 10:38 AM Kevin Rappier, 11/11/17

S:\P\MD_Engineering\Shore\Highway_Engineering\Roads\Fort Hamer Road\WKS\TRAFFIC PLANS\SIGNING AND PAVEMENT MARKING\LET_SPM.dwg, SPM-9, 11/4/2014, 4:37 PM, Karb, 11, 11x17

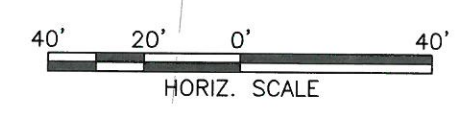
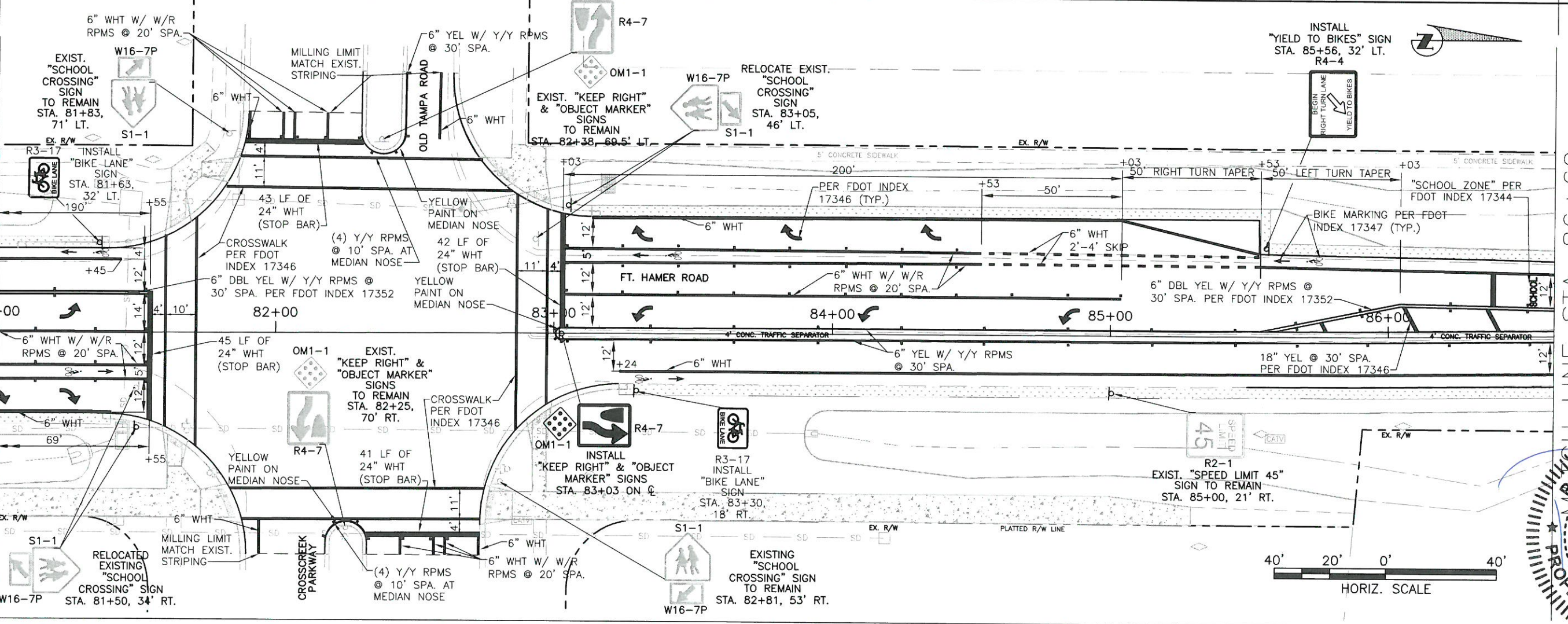
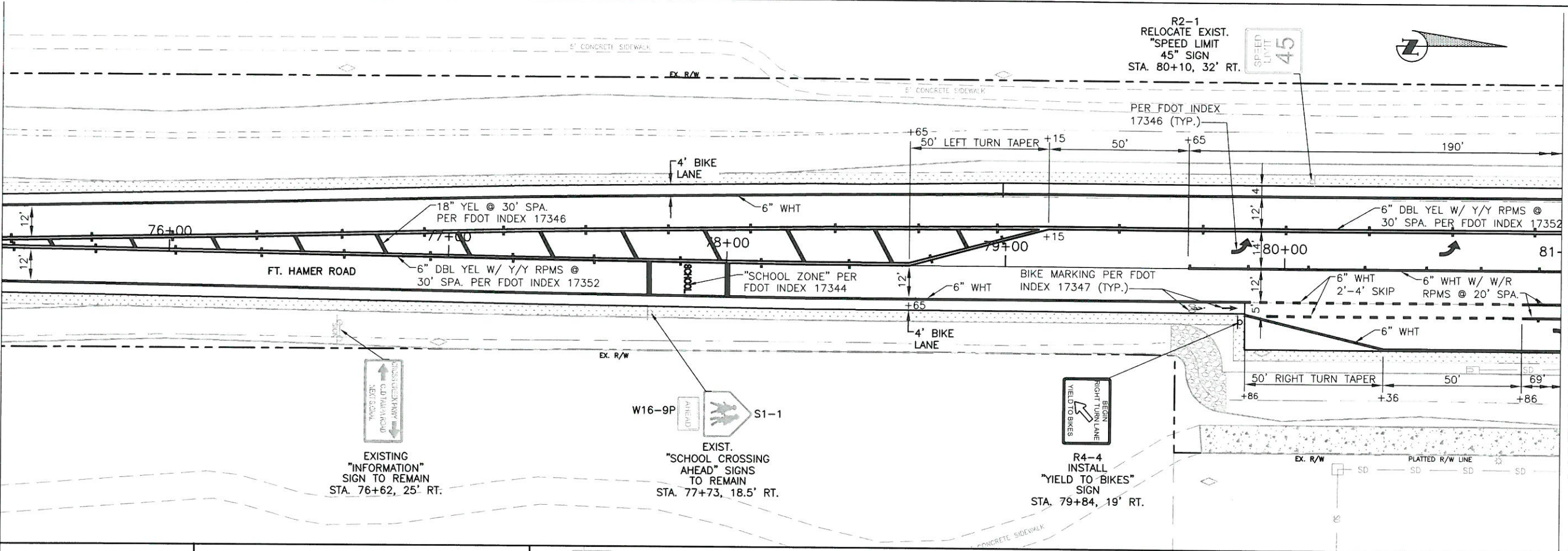
**FORT HAMER ROAD PHASE II
US 301 TO FUTURE FORT HAMER
BRIDGE
SIGNING AND PAVEMENT MARKING**

MATCH LINE STA. 75+40

MATCH LINE STA. 81+00

MATCH LINE STA. 81+00

MATCH LINE STA. 86+60



PROFESSIONAL ENGINEER

PAUL J. KREUZ, P.E.

No. 76246
FLORIDA P.E. # 4777

STATE OF FLORIDA

NO.	REVISION DESCRIPTION	BY	DATE

PROJECT #	323-6054764
SURVEY #	5303
SEC./TWN./RGE	7/35S/18E
SCALE	AS NOTED
BY	DATE
DESIGNED	09/11/14
CHECKED	09/18/14
CHECKED	09/26/14

**FORT HAMER ROAD PHASE II
US 301 TO FUTURE FORT HAMER
BRIDGE
SIGNING AND PAVEMENT MARKING**

MATCH LINE STA. 86+60

MATCH LINE STA. 92+20

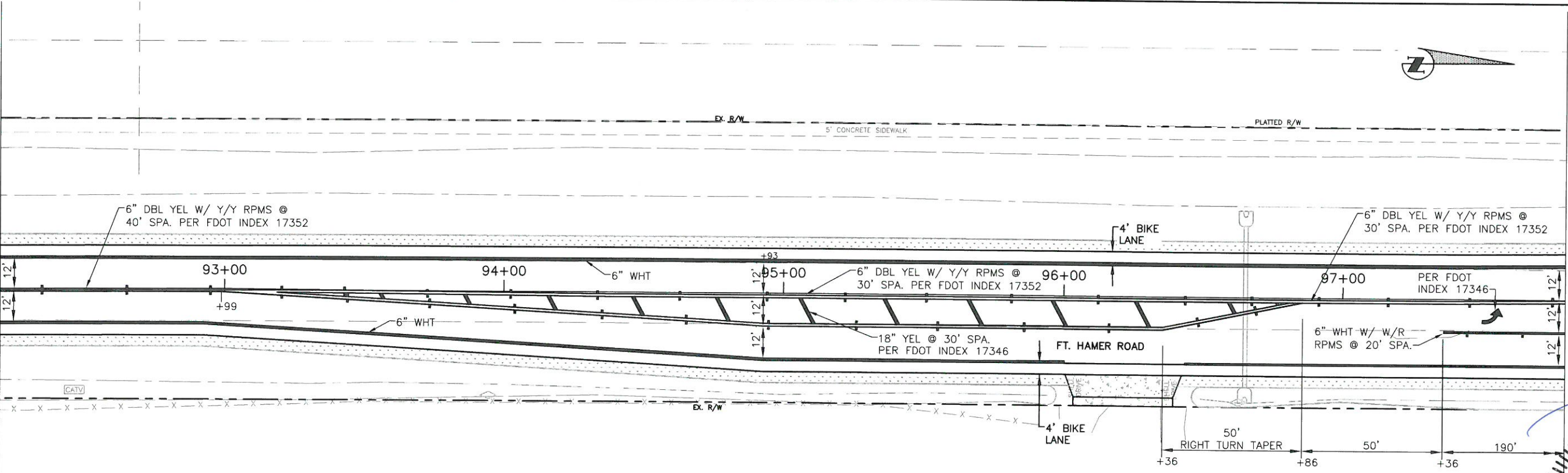
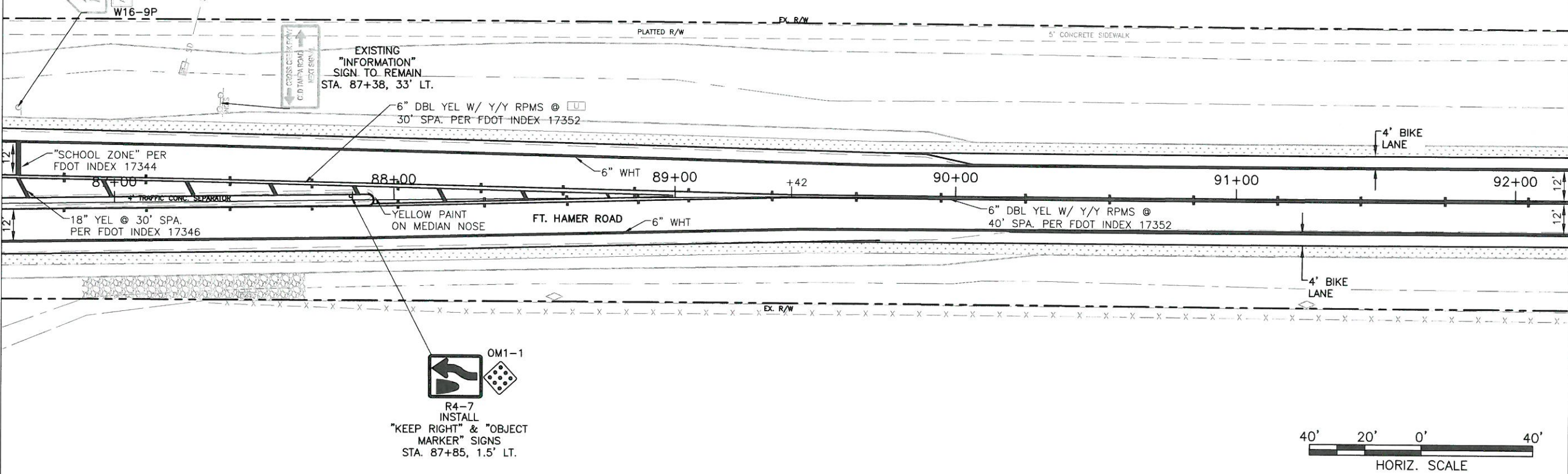
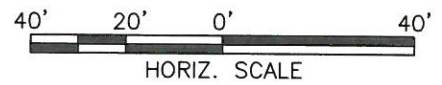
MATCH LINE STA. 92+20

MATCH LINE STA. 97+80

EXIST. "SCHOOL CROSSING AHEAD" SIGN TO REMAIN STA. 86+66, 34' LT. S1-1

EXISTING "INFORMATION" SIGN TO REMAIN STA. 87+38, 33' LT.

R4-7
INSTALL
"KEEP RIGHT" & "OBJECT MARKER" SIGNS
STA. 87+85, 1.5' LT.

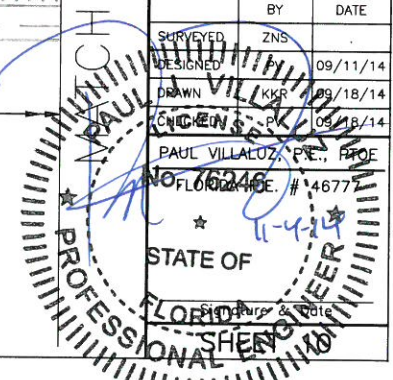


S:\PWD_Engineering\Share\Highway_Engineering\ROADS\Fort Hamer Road\TRAFFIC PLANS\SIGNING AND PAVEMENT MARKING\FH_Signing_SPA-0_11/2/2014 10:38 AM Ken's Reply 11-11-17

NO.	REVISION DESCRIPTION	BY	DATE

PROJECT #	323-6054764
SURVEY #	5303
SEC./TWN./RGE	7/35S/18E
SCALE	AS NOTED

BY	DATE
SURVEYED ZNS	
DESIGNED KKR	09/11/14
DRAWN KKR	09/18/14
CHECKED PK	09/18/14
PAUL VILLALBA, P.E., P.O.E.	
NO. FL 000246	# 4677



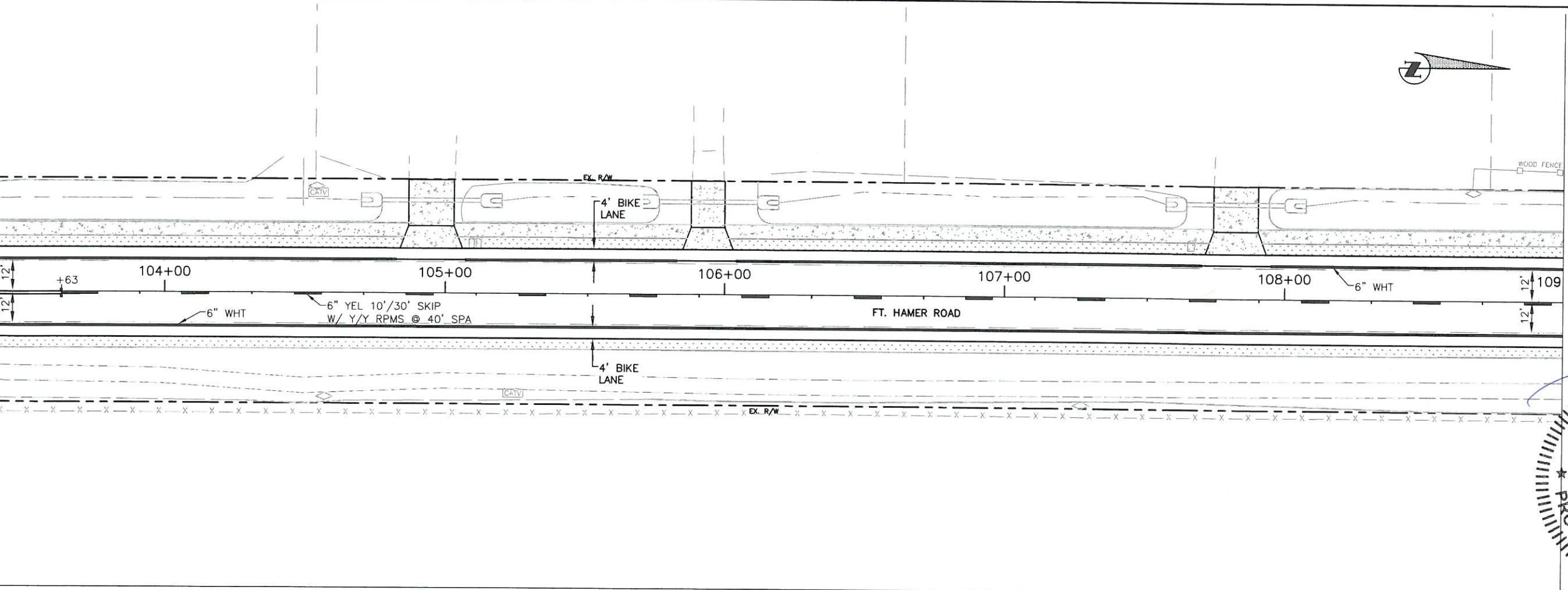
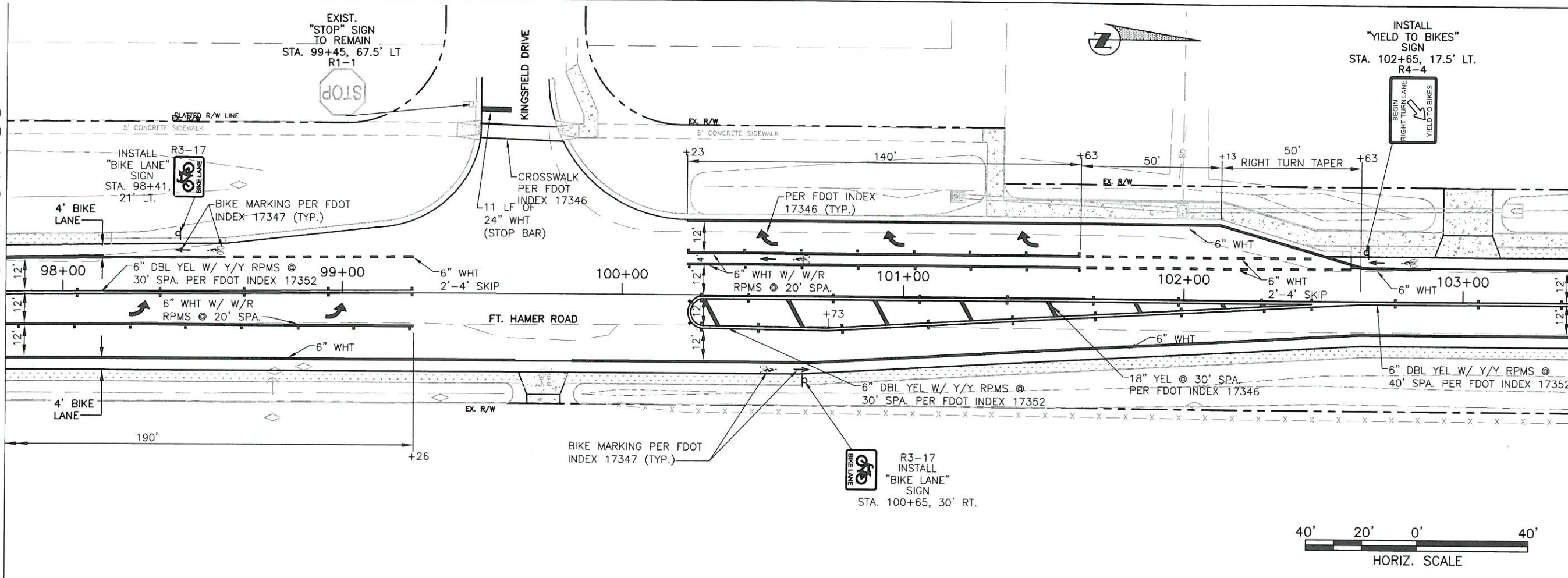
**FORT HAMER ROAD PHASE II
US 301 TO FUTURE FORT HAMER
BRIDGE
SIGNING AND PAVEMENT MARKING**

MATCH LINE STA. 97+80

MATCH LINE STA. 103+40

MATCH LINE STA. 103+40

LINE STA. 109+00



NO.	REVISION DESCRIPTION	BY	DATE

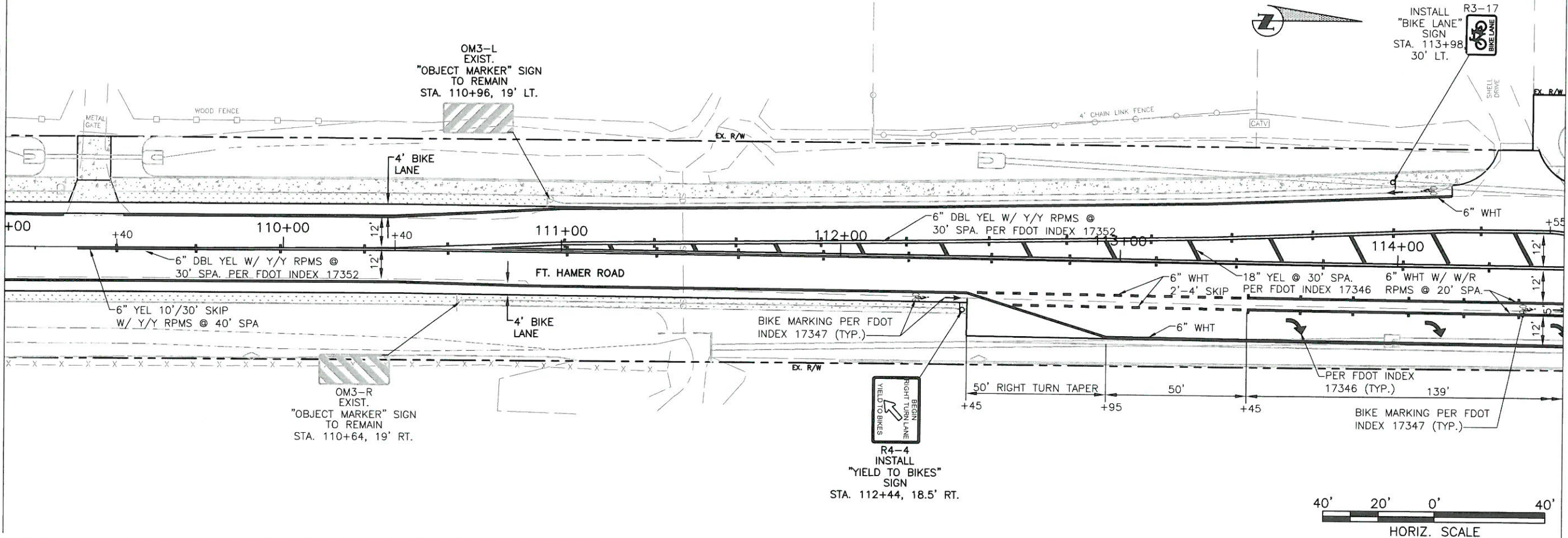
PROJECT # 323-6054764
SURVEY # 5303
SEC./TWN./RGE 7/35S/18E
DATE 09/11/14
BY KKR
DRAWN KKR 09/18/14
NO. 76246 PV 09/18/14
PAUL MILLALUZ, P.E. PTOE
FLORIDA P.E. # 6777
STATE OF FLORIDA
PROFESSIONAL ENGINEER
Signature & Date

S:\P\01_Engineering\Shore Highway Engineering\ROADS\Fort Hamer Road\TRAFFIC PLANS\SIGNING AND PAVEMENT MARKING\FH_Signing_Pavement_Markings.dwg, SM-11, 11/3/2014, 10:38 AM, Kevin Riley, 1:1, 11x17

**FORT HAMER ROAD PHASE II
US 301 TO FUTURE FORT HAMER
BRIDGE
SIGNING AND PAVEMENT MARKING**

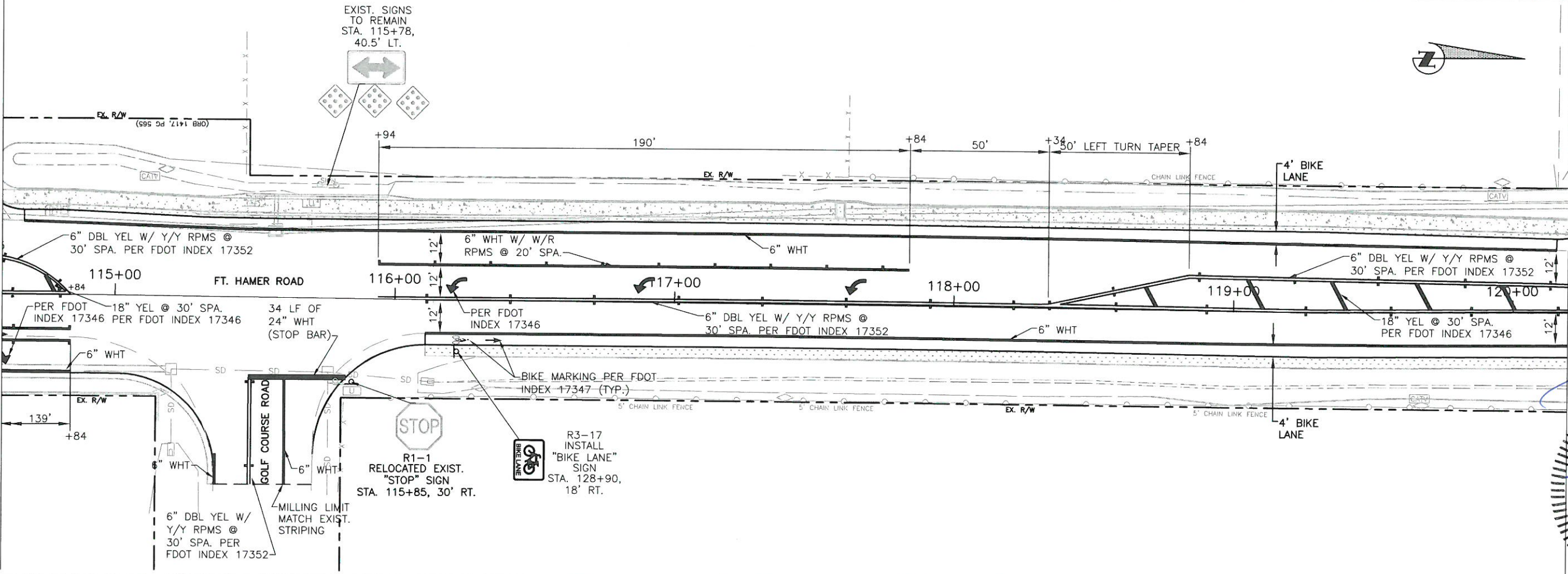
MATCH LINE STA. 109+00

MATCH LINE STA. 114+60



MATCH LINE STA. 114+60

MATCH LINE STA. 120+20



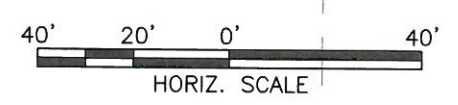
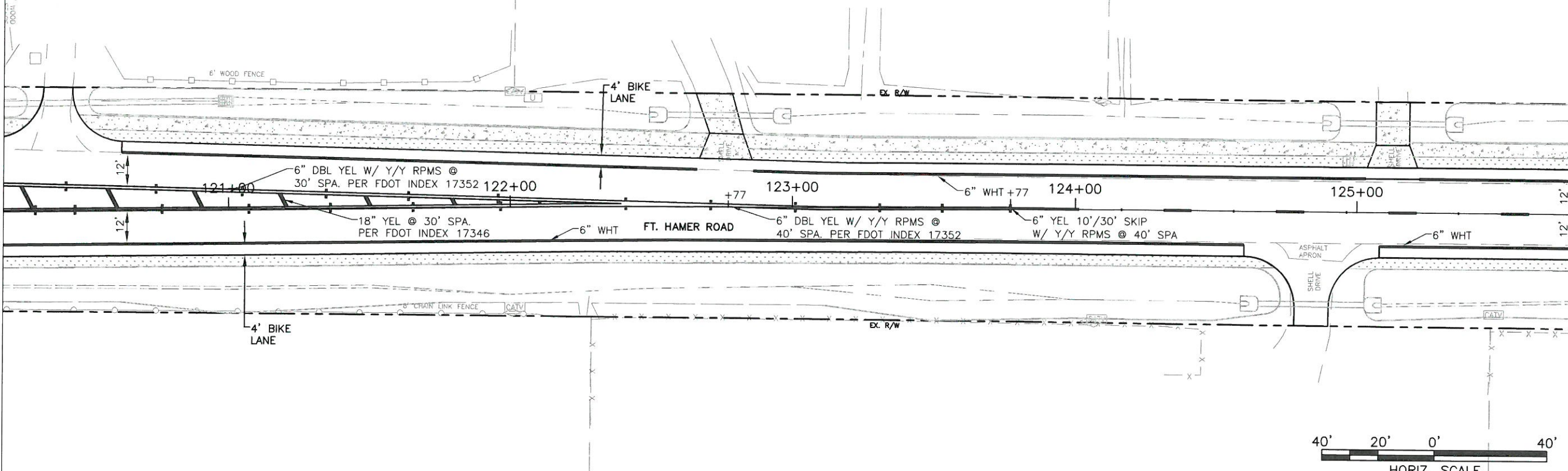
NO.	REVISION DESCRIPTION	BY	DATE

PROJECT #	323-6054764
SURVEY #	5303
SEC./TWN./RGE	7/35S/18E
SCALE	AS NOTED
NO.	
BY	
DATE	
DESIGNED BY	10/11/14
CHECKED BY	09/16/14
DATE	09/16/14
STATE OF FLORIDA	
PROFESSIONAL ENGINEER	
SHEET	12

S:\P\02 - Engineering - State Highway - Engineering - Roads\02 - Fort Hamer Road\02 - TRAFFIC PLANS\SIGNING AND PAVEMENT MARKING\PH I\SPK\02 - SPK.dwg, SPN-12, 11/17/2014 10:38 AM Kevin Riley, T.I. 11-17

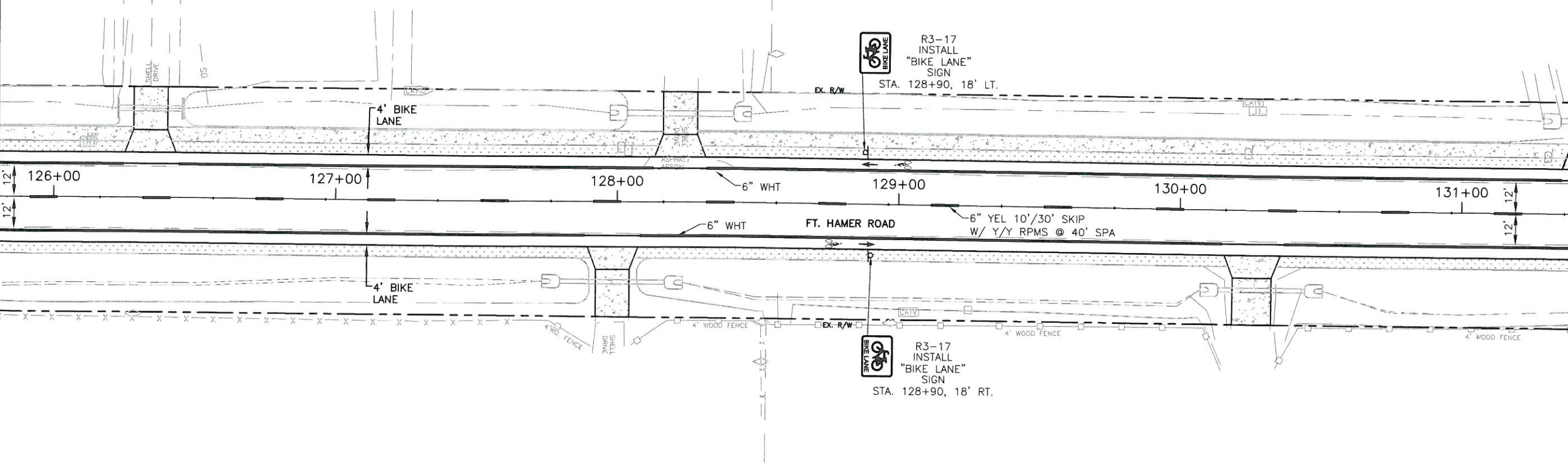
MATCH LINE STA. 120+20

MATCH LINE STA. 125+80



MATCH LINE STA. 125+80

MATCH LINE STA. 131+40

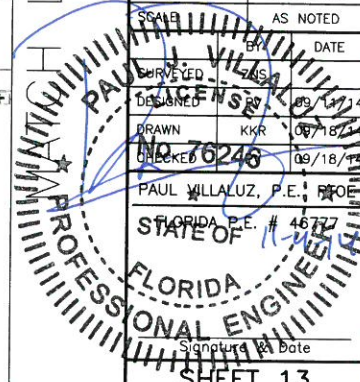


**FORT HAMER ROAD PHASE II
US 301 TO FUTURE FORT HAMER
BRIDGE
SIGNING AND PAVEMENT MARKING**

NO.	REVISION DESCRIPTION	BY	DATE

PROJECT #	323-6054764
SURVEY #	5303
SEC./TWN./RGE	7/35S/18E
SCALE	AS NOTED
DRAWN	KKR 08/18/14
CHECKED	76246 09/18/14
PAUL WILLALUZ, P.E.	PROFESSIONAL ENGINEER
STATE OF FLORIDA	# 46727

Signature: _____ Date: _____

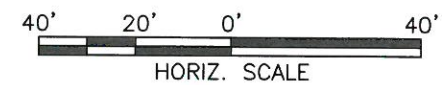
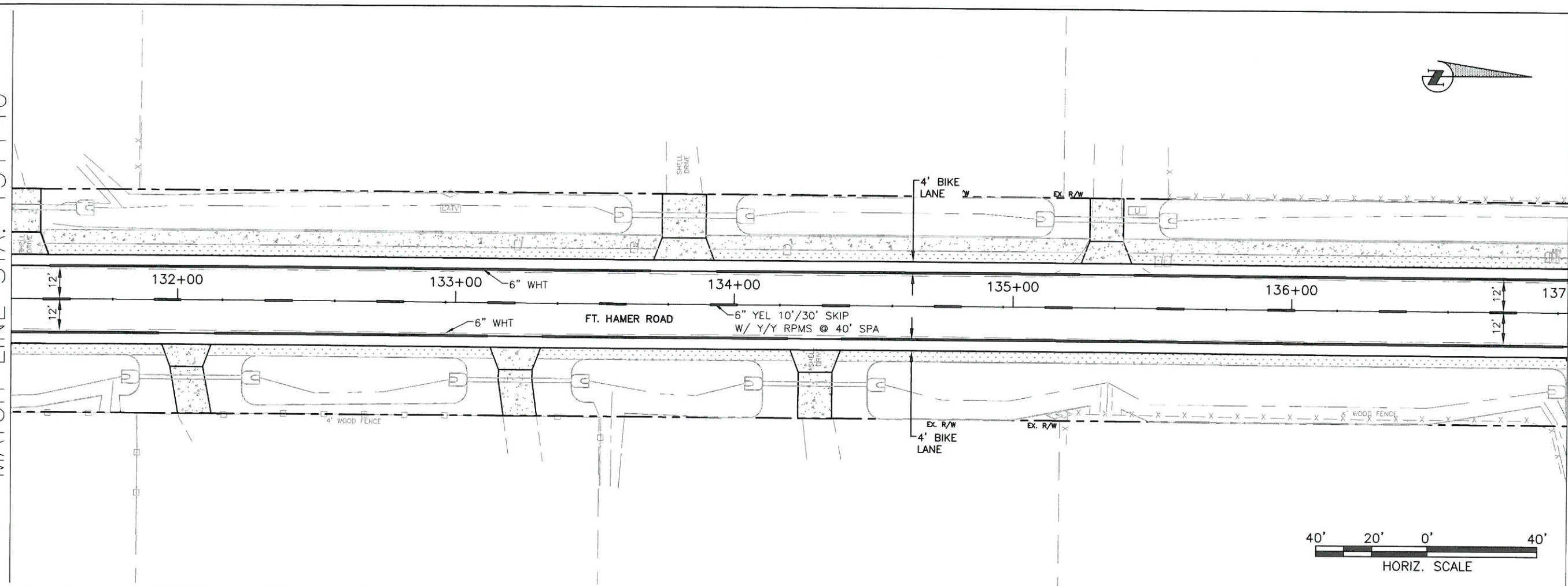


S:\P\W\Engineering\Shore Highway Engineering\ROADS\Fort Hamer_Road\DMG\TRAFFIC PLANS\SIGNING AND PAVEMENT MARKING\FH_SPM.dwg,SPN-13, 11/3/2014 10:39 AM, KKR, R14, 11.11+17

**FORT HAMER ROAD PHASE II
US 301 TO FUTURE FORT HAMER
BRIDGE
SIGNING AND PAVEMENT MARKING**

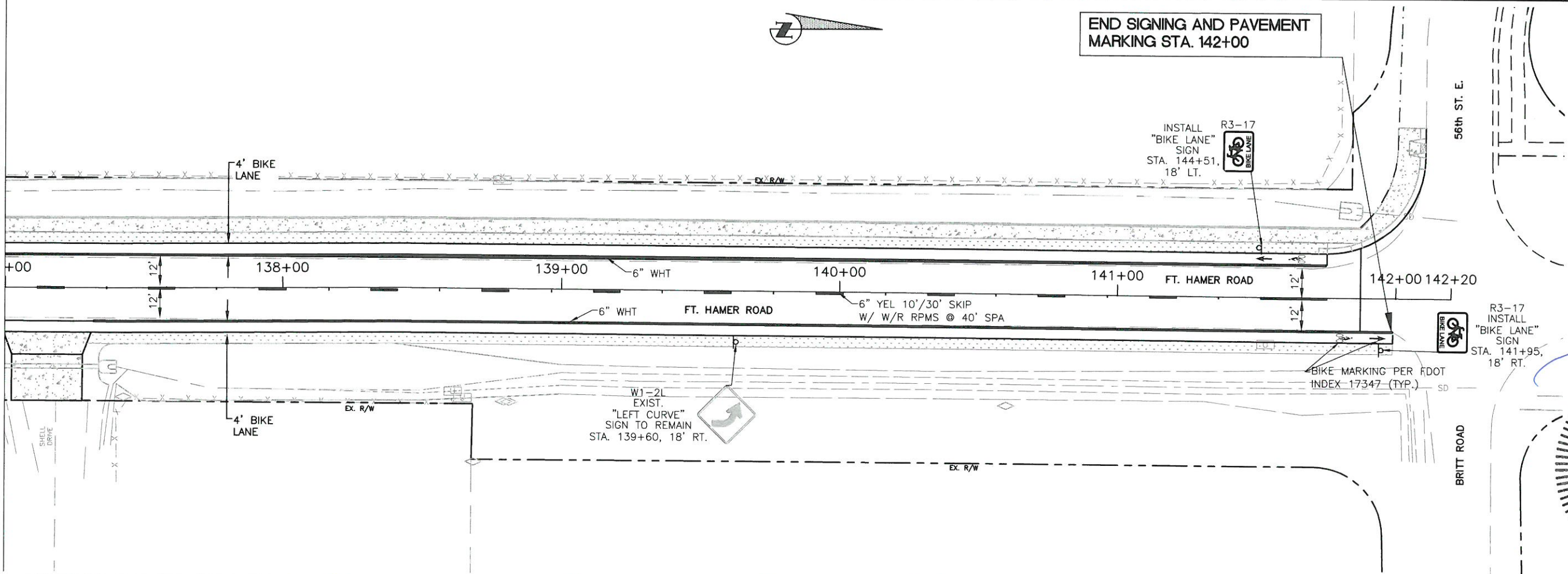
MATCH LINE STA. 131+40

MATCH LINE STA. 137+00



MATCH LINE STA. 137+00

MATCH LINE STA. 142+00



END SIGNING AND PAVEMENT MARKING STA. 142+00

INSTALL R3-17 "BIKE LANE" SIGN STA. 144+51, 18' LT.

R3-17 "BIKE LANE" SIGN STA. 141+95, 18' RT.

W1-2L EXIST. "LEFT CURVE" SIGN TO REMAIN STA. 139+60, 18' RT.

BIKE MARKING PER FDOT INDEX 17347 (TYP.)

NO.	REVISION DESCRIPTION	BY	DATE

PROJECT #	323-6054764
SURVEY #	5303
SEC./TWN./RGE	7/35S/18E
SCALE	AS NOTED
DESIGNED	BY DATE
DRAWN	BY DATE
CHECKED	BY DATE
<p>PAUL VILLALUZ, P.E., PTOE STATE OF FLORIDA PROFESSIONAL ENGINEER</p>	
Signature	Date

S:\PMD_Engineering\Shore Highway Engineering\ROADS\Fort Hamer Road\DWG\TRAFFIC PLANS\SIGNING AND PAVEMENT MARKING\FH_Signing_Pavement_SPM.dwg, SPM-14, 11/2/2014 10:39 AM, Kasia Ripley, T.T., 11x17