



UPPER MANATEE RIVER ROAD ROADWAY FUNCTIONAL IMPROVEMENTS

307-6082660

September 2014

INTERCONNECT PLANS

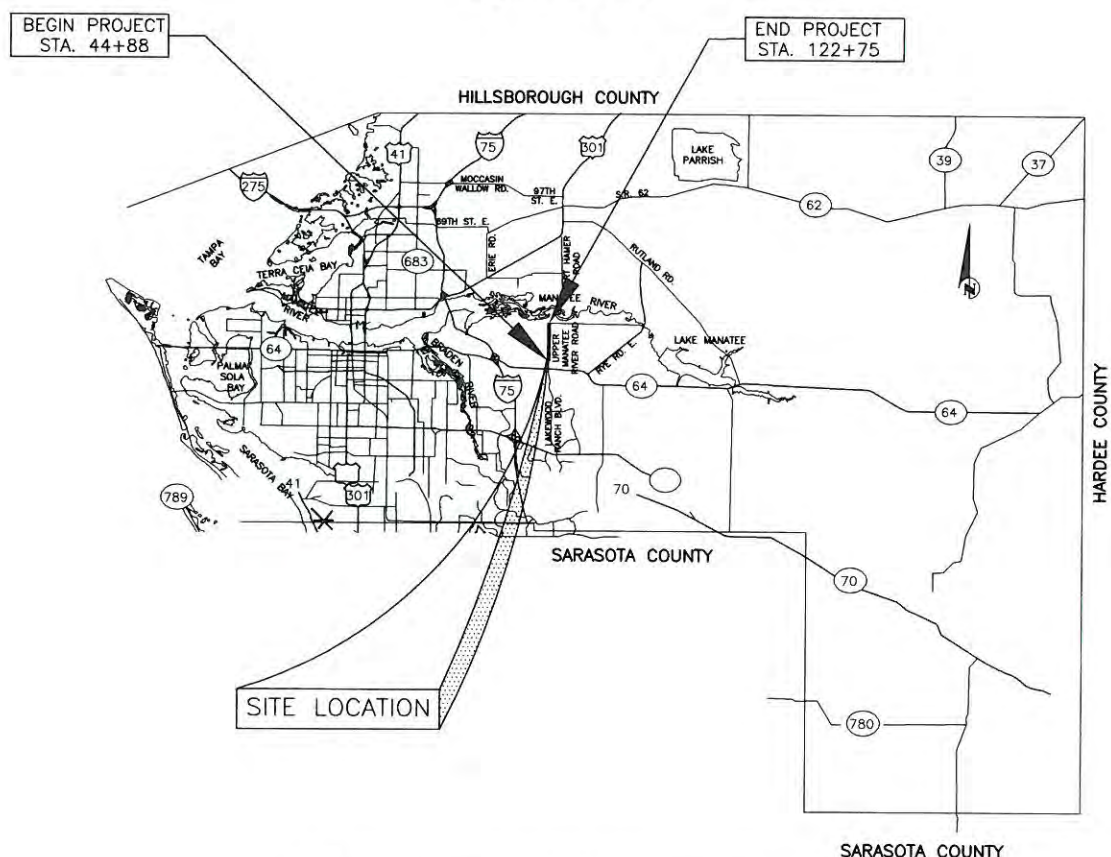
BID SET

UPPER MANATEE RIVER ROAD
 ROADWAY FUNCTIONAL
 IMPROVEMENTS
 INTERCONNECT PLANS
 COVER SHEET



VICINITY MAP
N.T.S.

PROJECT SITE



SITE LOCATION

NO.	INDEX OF SHEETS
IC-1	COVER SHEET
IC-2	GENERAL NOTES & LEGEND
IC-3	PAY ITEM NOTES
IC-4	TABULATION OF QUANTITIES
IC-5 - IC-14	INTERCONNECT PLANS
IC-15	SPLICE DIAGRAM

PROJECT DESCRIPTION

THIS PROJECT CONSISTS OF WIDENING THE EXISTING SHOULDER TO 8', RELOCATING EXISTING ROADSIDE DITCHES; ADDING AND REPAIRING SIDEWALK ON THE WEST SIDE OF THE ROAD; ADDING RIGHT AND LEFT TURN LANES AT EACH INTERSECTION.

LENGTH OF PROJECT		
	LINEAR FEET	MILES
ROADWAY	7,439	1.40
SIDEWALK	3,604	.68
NET LENGTH OF PROJECT	7,787	1.47
EXCEPTIONS	N/A	N/A
GROSS LENGTH OF PROJECT	7,787	1.47

NO.	DATE	BY	REVISION DESCRIPTION

PROJECT #	307-6082660
SURVEY #	FILE 00-42783
SEC./TWN./RGE	19-20, 29-30,34S/19E
SCALE	NTS
SURVEYED	8/12/12
DESIGNED	10/2/13
DRAWN	KR 09/18/14
CHECKED	NO. 76246/14
PAUL J. VILLALBA, P.E., P.C.D.E.	FLORIDA B.E. # 76246

STATE OF FLORIDA
PROFESSIONAL ENGINEER
SHEET 16-1

COPYRIGHT © 2010 MANATEE COUNTY GOVERNMENT | S:\P\O_Engineering\Shore\Highway_Engineering\ROADS\Upper_Manatee_River_Road\WORK\I\IC_PLANS\STATUS\DIRR_ATIUS_COVER.dwg\DOZEK_11/17/2014 10:12 AM Keith Rippey, L.C., 11/17

GENERAL NOTES

1. AT LEAST FIVE (5) WORKING DAYS PRIOR TO BEGINNING CONSTRUCTION, THE CONTRACTOR SHALL CONTACT MANATEE COUNTY TRAFFIC DESIGN DIVISION:

MR. PAUL VILLALUZ, P.E., PTOE
 MANATEE COUNTY PUBLIC WORKS DEPARTMENT
 TRAFFIC DESIGN DIVISION
 2101 47TH TERRACE EAST
 BRADENTON, FL 34203
 (941) 749-3500, EXT. 7859

2. THE CONTRACTOR MUST NOTIFY THE TRAFFIC ENGINEERING DIVISION AT LEAST TWO (2) BUSINESS DAYS IN ADVANCE TO SCHEDULE THE FINAL INSPECTION. WHEN CONSTRUCTION IS COMPLETE, PROVIDE THREE (3) HARD-COPY SETS OF "AS BUILT" PLANS AND ONE COMPACT DISK OF RECORD DRAWINGS IN ADOBE ADOBE (.PDF) AND AUTOCAD (.DWG) FORMAT TO:

MR. VISHAL S. KAKKAD, P.E., PTOE
 MANATEE COUNTY PUBLIC WORKS DEPARTMENT
 TRAFFIC ENGINEERING DIVISION
 2101 47TH TERRACE EAST
 BRADENTON, FL 34203
 (941) 749-3500, EXT. 7812

THE RECORD DRAWINGS MUST BE RECEIVED 48 HOURS PRIOR TO SCHEDULING THE FINAL INSPECTION.

3. MAINTAINING AGENCY: MANATEE COUNTY TRAFFIC OPERATIONS DIVISION 2904 12TH STREET COURT EAST BRADENTON, FLORIDA 34208

4. WHEN FDOT AND MANATEE COUNTY SPECIFICATIONS DIFFER, THE MORE STRINGENT SPECIFICATION WILL TAKE PRECEDENCE. MANATEE COUNTY TRAFFIC SPECIFICATIONS SHALL BE OBTAINED BY THE CONTRACTOR FROM THE PROJECT MANAGEMENT DIVISION.

5. THE CONTRACTOR, IN COMMUNICATION WITH THE ENGINEER, SHALL COORDINATE UTILITY RELOCATION IF NECESSARY.

6. IN THE EVENT THAT R/W OR IRRESOLVABLE UTILITY CONFLICTS PROHIBIT ADVANCED TRAFFIC MANAGEMENT SYSTEM (ATMS) INFRASTRUCTURE PLACEMENT (i.e., CONDUIT, PULL/SPLICE BOXES, CAMERA POLES, etc.) ACCORDING TO THE PLANS, THE CONTRACTOR SHALL CONTACT THE TRAFFIC OPERATIONS ENGINEER AND THE ENGINEER OF RECORD (EOR) TO OBTAIN A DESIGN VARIATION.

7. THE LOCATION OF UTILITIES SHOWN ON THE PLANS ARE BASED ON LIMITED INVESTIGATION TECHNIQUES AND SHOULD BE CONSIDERED APPROXIMATE ONLY. THE CONTRACTOR SHALL DETERMINE THE EXACT LOCATIONS OF ALL UTILITIES.

8. EXISTING UTILITIES ARE TO REMAIN IN PLACE UNLESS OTHERWISE NOTED.

9. THE CONTRACTOR SHALL NOTIFY UTILITY OWNERS OF ANY EXCAVATION OR DEMOLITION ACTIVITY THROUGH SUNSHINE ONE CALL OF FLORIDA INC. (1-800-432-4770) AND SHALL ALSO NOTIFY THOSE UTILITY OWNERS/AGENCIES LISTED WITHIN OR IMPACTED BY THESE PLANS, NOT LESS THAN TWO (2) FULL BUSINESS DAYS IN ADVANCE OF BEGINNING CONSTRUCTION ON THE JOB SITE.

10. THE CONTRACTOR SHALL HAND DIG THE FIRST 48 INCHES (4 FEET) OF THE HOLE FOR THE POLE FOUNDATION OR CONDUIT RUN WHERE UTILITIES ARE IN CLOSE PROXIMITY.

11. IT SHOULD BE NOTED THAT TEST BORINGS WERE NOT MADE WHERE CONDUIT RUNS ARE TO BE INSTALLED.

12. SUBMIT STRUCTURAL AND SHOP DRAWINGS OF ALL EQUIPMENT TO MANATEE COUNTY FOR REVIEW AND APPROVAL PRIOR TO ORDERING EQUIPMENT:


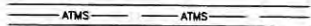



MR. KENT D. BONTRAGER, P.E. PROJECT MANAGER
 MANATEE COUNTY PUBLIC WORKS DEPARTMENT
 PROJECT MANAGEMENT DIVISION
 1022 26TH AVENUE EAST BRADENTON, FL 34208-3916
 (941) 708-7450, EXT. 7331

13. UPON PASSING THE FINAL INSPECTION, THE CONTRACTOR SHALL SEND A WRITTEN REQUEST TO MANATEE COUNTY REQUESTING TRANSFER OF MAINTENANCE FROM THE CONTRACTOR TO MANATEE COUNTY. MANATEE COUNTY WILL RESPOND WITHIN 5 WORKING DAYS TO ESTABLISH A TIME TABLE FOR THE TRANSFER OF MAINTENANCE RESPONSIBILITY.

MR. AARON BURKETT
 MANATEE COUNTY PUBLIC WORKS DEPARTMENT
 TRAFFIC OPERATIONS DIVISION
 2904 12TH STREET COURT EAST BRADENTON, FL 34208
 (941) 708-7450, EXT. 7509

14. ANY DAMAGE TO TRAFFIC SIGNAL EQUIPMENT OR ADVANCED TRAFFIC MANAGEMENT SYSTEM (ATMS) INFRASTRUCTURE THAT IS CAUSED BY THE CONTRACTOR SHALL BE REPAIRED BY THE CONTRACTOR TO THE SATISFACTION OF THE TRAFFIC OPERATIONS DIVISION. PAYMENT SHALL NOT BE MADE FOR THIS WORK.

LEGEND

-  PROPOSED CONDUIT (OPEN TRENCH)
-  PROPOSED CONDUIT (DIRECTIONAL BORE)
-  PROPOSED FIBER OPTIC SPLICE BOX
-  PROPOSED FIBER OPTIC PULL BOX
-  GRASS SHOULDER

CONDUIT LEGEND

- LV = SIGNAL LOW VOLTAGE
- HV = SIGNAL HIGH VOLTAGE
- SP = SPARE CONDUIT
- FO = FIBER OPTIC CONDUIT



UPPER MANATEE RIVER ROAD
 ROADWAY FUNCTIONAL
 IMPROVEMENTS
 INTERCONNECT PLANS
 GENERAL NOTES & LEGEND

NO.	REVISION DESCRIPTION	BY	DATE

PROJECT #	307-6082660
SURVEY #	FILE 00-42783
SEC./TWN./RCE	19-20, 29-30.34S/19E
SCALE	1"=40' HORIZ.

DESIGNED: PAVEL VILLALUZ, P.E., PTOE
 DRAWN: PAVEL VILLALUZ, P.E., PTOE
 CHECKED: M/VK 09/18/14
 NO. 76246
 FLORIDA P.E. # 76246
 STATE OF FLORIDA
 PROFESSIONAL ENGINEER

COPYRIGHT 2010, MANATEE COUNTY GOVERNMENT | S:\V\RD_Engineering_Sharda\Highway_Engineering\ROADS\Upper Manatee River Road\DWG\TRAFFIC_PLANS\ATMS\UMPR_ATMS.dwg\GENERAL NOTES IC-2_11/4/2014 10:15 AM Karan Rishy, 1:2, 11x17

PAY ITEM NOTES

1. 630-2-11:
 CONDUIT SHALL BE INSTALLED PER FDOT STANDARD INDEX NO. 17721. USE 2" HDPE SDR 11 CONDUIT FOR FUTURE FIBER OPTIC INTERCONNECT CABLE. USE A MINIMUM 2" DIAMETER SCHEDULE 40 PVC CONDUIT FOR ALL SIGNAL AND DETECTION FUNCTIONS. INSTALL CONDUIT UNDER PROPOSED ROADWAY AND/OR SIDEWALK PRIOR TO INSTALLATION OF ROADWAY BASE AND SURFACE OR CONCRETE. MEASUREMENT IS FOR STRAIGHT LINE HORIZONTAL DISTANCE BETWEEN CENTERS OF PULL BOXES, CABINETS, POLES, ETC. IN LINEAR FEET REGARDLESS OF THE LENGTH OR NUMBER OF CONDUITS INSTALLED. NO ADDITIONAL PAYMENT WILL BE MADE FOR MULTIPLE RUNS OF CONDUIT WITHIN A TRENCH. MULTIPLE RUNS ARE LABELED ON THE PLANS.

#14 XHHW PULL WIRE SHALL BE INSTALLED IN ALL CONDUITS. AT LEAST 2 FEET OF PULL WIRE SHALL BE ACCESSIBLE.

ALL FIBER OPTIC CABLE CONDUIT INSTALLED BY TRENCHING METHOD SHALL HAVE WARNING TAPE INSTALLED IN THE TRENCHLINE ONE FOOT BELOW FINISH GRADE DIRECTLY OVER ANY INSTALLED CABLE AND CONDUIT RUN. THE WARNING TAPE SHALL COMPLY WITH SECTION 630-2.4 OF THE FDOT STANDARD SPECIFICATIONS. COLOR SHALL BE ORANGE AS REQUIRED BY AMERICAN PUBLIC WORKS ASSOCIATION (APWA) UNIFORM COLOR CODE, AND HAVE CAUTION: FIBER OPTIC CABLE BURIED BELOW PERMANENTLY PRINTED ON THE TAPE'S SURFACE.

THIS PAY ITEM INCLUDES A LOCATE WIRE SYSTEM. THE LOCATE WIRE SYSTEM INCLUDES LOCATE WIRE, WIRE GROUNDING UNITS (WGU), GROUND RODS, AND ALL MISCELLANEOUS ITEMS NEEDED FOR A COMPLETE AND ACCEPTED LOCATE SYSTEM.

2. 630-2-12:
 SECTION 630-5 OF THE FDOT STANDARD SPECIFICATIONS FOR ROAD AND BRIDGE CONSTRUCTION DEFINES THE FOLLOWING: PAYMENT FOR CONDUIT PLACED UNDER EXISTING PAVEMENT (ROADWAY, DRIVEWAYS, OR SIDEWALK) WILL BE MADE AS DIRECTIONAL BORE. IF CONDUIT IS BEING PLACED UNDER BOTH EXISTING TURF AND EXISTING PAVEMENT BETWEEN TWO PULL BOXES, PAYMENT FOR THE TOTAL PULL BOX-TO-PULL BOX LENGTH WILL BE MADE AS DIRECTIONAL BORE. THESE PLANS ARE DEVELOPED PER THIS LANGUAGE. THE CONTRACTOR MAY INSTALL CONDUIT USING THE OPEN TRENCH METHOD AT THEIR DISCRETION WITH THE EXCEPTION OF UNDER PAVEMENT AND/OR SIDEWALK INSTALLATIONS.

#14 XHHW PULL WIRE SHALL BE INSTALLED IN ALL CONDUITS AT LEAST 2 FEET OF PULL WIRE SHALL BE ACCESSIBLE.

USE 2" HDPE SDR 11 CONDUIT FOR FUTURE FIBER OPTIC INTERCONNECT CABLE. USE A MINIMUM 2" DIAMETER HDP SDR 11 FOR ALL SIGNAL, PEDESTRIAN, AND DETECTION FUNCTIONS. MEASUREMENT IS FOR STRAIGHT LINE HORIZONTAL DISTANCE BETWEEN CENTERS OF PULL BOXES, CABINETS, POLES, ETC. IN LINEAR FEET REGARDLESS OF THE LENGTH OR NUMBER OF CONDUITS INSTALLED. NO ADDITIONAL PAYMENT WILL BE MADE FOR MULTIPLE RUNS OF CONDUIT WITHIN A BORE. MULTIPLE RUNS ARE LABELED ON THE PLANS.

THIS PAY ITEM INCLUDES A LOCATE WIRE SYSTEM. THE LOCATE WIRE SYSTEM INCLUDES LOCATE WIRE, WIRE GROUNDING UNITS (WGU), GROUND RODS AND ALL MISCELLANEOUS ITEMS NEEDED FOR A COMPLETE AND ACCEPTED LOCATE SYSTEM.

3. 633-1-122:
 THE PROPOSED FIBER OPTIC CABLE SHALL BE 48 FIBER SINGLE MODE.

4. 635-2-12, 635-2-13
 USE POLYMER CONCRETE CONSTRUCTION PULL BOXES WITH POLYMER CONCRETE COVER. PULL BOXES SHALL BE INSTALLED PER FDOT STANDARD INDEX NO. 17700. PULL BOXES ARE TO BE PLACED BEHIND CURB AND GUTTER. IF THERE IS NO CURB AND GUTTER. PULL BOXES SHALL BE PLACED A MINIMUM OF 7 FEET FROM EDGE OF PAVEMENT. IF IN OR ADJACENT TO SIDEWALK, PULL BOXES SHALL BE FLUSH WITH SIDEWALKS OR OTHER CONCRETE, OTHERWISE 1.5 INCHES ABOVE EXISTING GRADE. THE TOP OF THE LID SHALL HAVE THE FOLLOWING IDENTIFICATION PERMANENTLY CAST INTO THEIR TOP SURFACE IN STAMPED RAISED LETTERS. ACCORDING TO THE APPLICATION FOR WHICH IT IS TO BE USED:
 "MANATEE COUNTY TRAFFIC SIGNAL" FOR SIGNALIZED INTERSECTION APPLICATIONS;
 "MANATEE COUNTY FIBEROPTIC SYSTEM" FOR FIBER OPTIC CABLE ITS APPLICATIONS;
 "TRAFFIC MONITORING" FOR TRAFFIC MONITORING APPLICATIONS.
 APPROPRIATELY SIZE EACH PULL BOX SO THE FIBER COMMUNICATION AND/OR INTERCONNECT

CABLE DOES NOT EXCEED MANUFACTURER'S RECOMMENDED BENDING RADIUS. STANDARD PULL BOX DIMENSION SHALL BE 17"X30"X12". FIBER OPTIC PULL BOX DIMENSION SHALL BE 24"X36"X36". FIBER OPTIC SPLICE BOX DIMENSIONS SHALL BE 30"X60"X48".

ALL FIBER OPTIC PULL BOXES SHALL BE MARKED WITH A 3 1/2"X72" STANDARD OR ELECTRONIC ROUTE MARKER WITH ORANGE POLYDOME LABELED "WARNING, BURIED FIBER OPTIC CABLE". THE INSTALLATION HEIGHT SHALL BE 4'-6" ABOVE GRADE TO TOP OF POST. ROUTE MARKERS SHALL BE INSTALLED AT ALL PULL BOX LOCATIONS ENTERED BY PROPOSED CONDUIT AS PART OF THE LOCATE SYSTEM. PULL BOX LOCATIONS DESIGNATED AS "ERM" SHALL HAVE AN ELECTRONIC ROUTE MARKER INSTALLED. STANDARD ROUTE MARKERS SHALL BE INSTALLED AT ALL OTHER FIBER OPTIC PULL BOX LOCATIONS. PAYMENT FOR ROUTE MARKERS ARE INCIDENTAL TO PAY ITEM 635-2-12.



UPPER MANATEE RIVER ROAD
 ROADWAY FUNCTIONAL
 IMPROVEMENTS
 INTERCONNECT PLANS
 PAY ITEM NOTES

NO.	REVISION DESCRIPTION	BY	DATE

PROJECT #	307-6082660
SURVEY #	FILE 00-42783
SEC./TWN./RGE	19-20
SCALE	29-30,34S/19E

SURVEYED BY: ZNS 04/28/14
 DESIGNED BY: KR 09/18/14
 DRAWN BY: KR 09/18/14
 CHECKED BY: MJK 10/24/14
 PAUL J. VILLALBA, P.E., PTOE
 FLORIDA P.E. # 76246
 STATE OF FLORIDA
 PROFESSIONAL ENGINEER

COPYRIGHT 2010 MANATEE COUNTY GOVERNMENT | S:\P\01_Engineering_Shares\Highway_Engineering\ROADS\Upper_Manatee_River_Road\DWG\TRAFFIC_PLANS\ATIS\UMR_ATIS.dwg\PAY ITEM NOTES IC-3_11/4/2014 10:15 AM Koria Roby, 1:2, 11x17

TABULATION OF QUANTITIES

PAY ITEM NO.	DESCRIPTION	UNIT	SHEET NUMBERS																				TOTAL THIS SHEET		GRAND TOTAL	
			IC-5		IC-6		IC-7		IC-8		IC-9		IC-10		IC-11		IC-12		IC-13		IC-14		PLAN	FINAL	PLAN	FINAL
			PLAN	FINAL	PLAN	FINAL	PLAN	FINAL	PLAN	FINAL	PLAN	FINAL	PLAN	FINAL	PLAN	FINAL	PLAN	FINAL	PLAN	FINAL	PLAN	FINAL				
630-2-11	CONDUIT (F&I) (OPEN TRENCH)	LF	230		820		500		910		810		700		930		1060		890		430		7280		7280	
630-2-12	CONDUIT (F&I) (DIRECTIONAL BORE)	LF	210		10		490		160		260		370		140		0		170		100		1910		1910	
633-1-121	ITS FIBER OPTIC CABLE (F&I), SM, 12 FIBER	LF	30		0		0		0		0		0		0		0		0		0		30		30	
633-1-122	ITS FIBER OPTIC CABLE (F&I), SM, 48 FIBER	LF	460		930		1040		1210		1160		1160		1160		1160		1200		580		10060		10060	
633-2-31	FIBER OPTIC CONNECTION, INSTALL SPLICE	EA	2		0		0		0		0		0		0		0		0		48		50		50	
633-3-11	FIBER OPTIC CONNECTION HARDWARE, (F&I), SPLICE ENCLOSURE	EA	1		0		0		1		0		0		1		0		0		0		3		3	
633-3-12	FIBER OPTIC CONNECTION HARDWARE, (F&I), SPLICE TRAY	EA	2		0		0		1		0		0		1		0		0		4		8		8	
635-2-12	PULL AND SPLICE BOX (F&I) (24"X36")	EA	0		2		1		2		2		2		1		2		3		1		16		16	
635-2-13	PULL AND SPLICE BOX (F&I) (30"X60"X48")	EA	1		0		0		1		0		0		1		0		0		0		3		3	

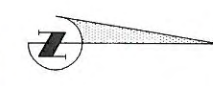
UPPER MANATEE RIVER ROAD
ROADWAY FUNCTIONAL
IMPROVEMENTS
INTERCONNECT PLANS
TABULATION OF QUANTITIES

NO.	REVISION DESCRIPTION	BY	DATE

PROJECT # 307-6082660
 SURVEY # FILE 00-42783
 SEC./TWN./RGE 29-30-34S/19E
 SCALE 1"=40'
 DESIGNED BY: VILLALBA
 PV 09/18/14
 DRAWN BY: KR
 MG/VK 09/18/14
 CHECKED BY: MG/VK
 PV 09/18/14
 PAUL J. VILLALBA P.E., PTOE
 FLORIDA P.E. # 76246
 STATE OF FLORIDA
 PROFESSIONAL ENGINEER

COPYRIGHT 2010 MANATEE COUNTY GOVERNMENT I:\N\PD_Engineering_Shera\Highway_Engineering\ROADS\Upper_Manatee_River_Road\UMR\TRAFFIC_PLANS\ATMS\UMR_ATMS.dwg,TAB OF QUANT - 4, 11/14/2014 10:43 AM Karla Ripley, 12, 11x17

COPYRIGHT 2010 MANATEE COUNTY GOVERNMENT | S:\P\O - Engineering - Shore\Highway - Engineering\ROADS\Upper Manatee River Road\DWG\TRAFFIC PLANS\ATMS.dwg, C-5, 11/14/2014 11:05 AM Kara Ripley, 1:2, 11x17



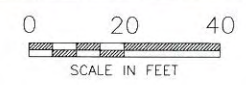
**UPPER MANATEE RIVER ROAD
ROADWAY FUNCTIONAL
IMPROVEMENTS
INTERCONNECT PLANS
ST. RT. 64 TO 33+00 (NOT SURVEYED)**

MATCH LINE STA. 33+00

NOTE:

PROPOSED LOCATION OF ITS POLE IS APPROXIMATE. CONTRACTOR TO FIELD VERIFY ACTUAL LOCATION. CONTRACTOR TO VERIFY UTILITY CONFLICTS.

**CALL THE SUNSHINE STATE
ONE CALL 1-800-432-4770
48 HOURS BEFORE DIGGING FOR THE
LOCATION OF UNDERGROUND UTILITIES**



NO.	REVISION DESCRIPTION	BY	DATE

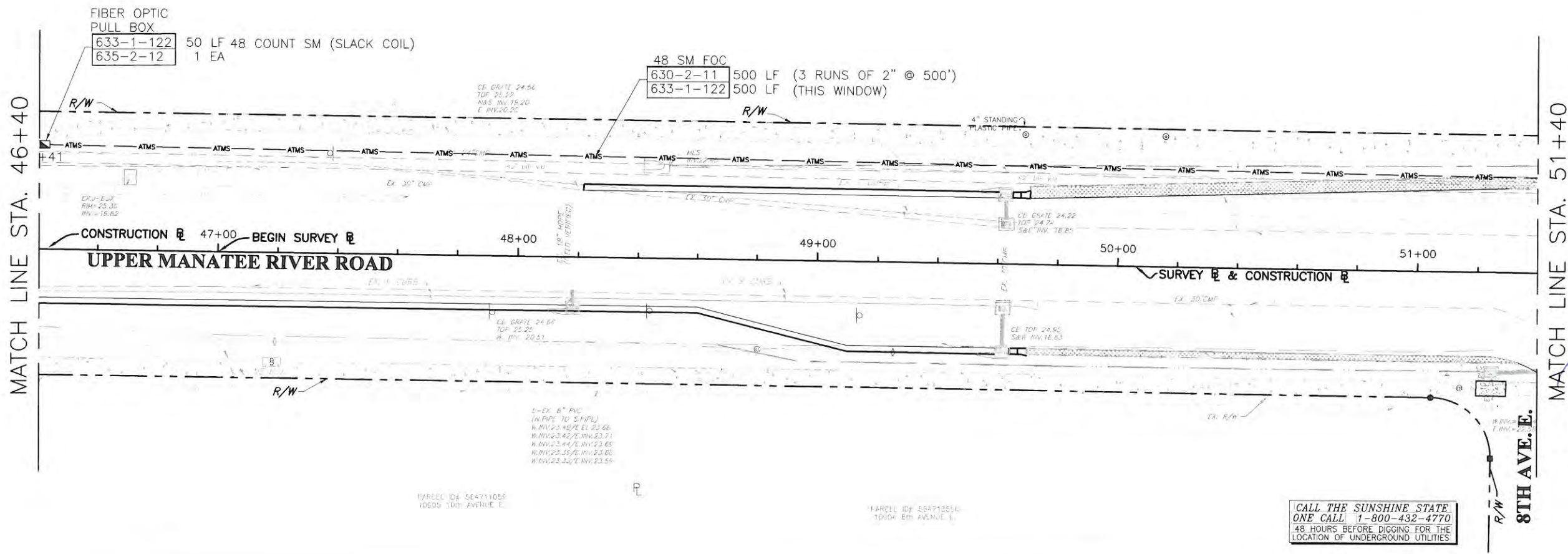
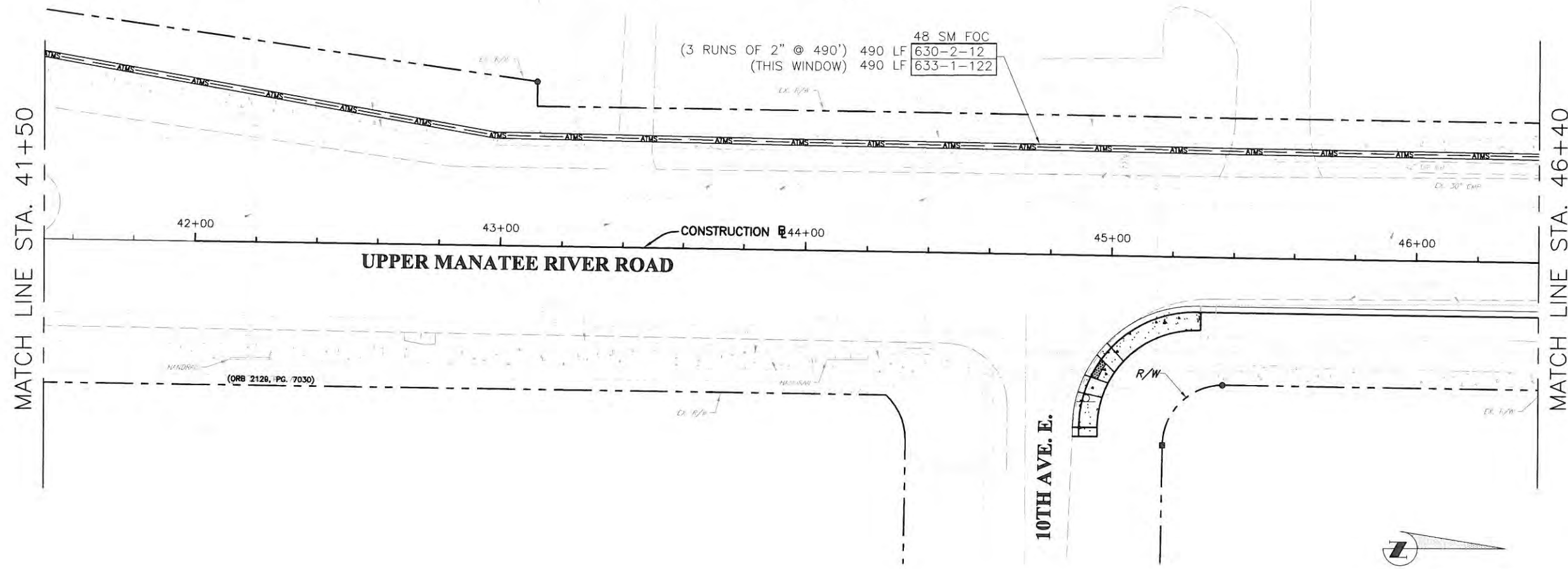
PROJECT #	307-6082660
SURVEY #	FILE 00-42783
SEC./TWN./RGE	19-20, 29-30,34S/19E
SCALE	1"=40' HORIZ.

BY	DATE
SURVEYED	ZNS 04/11/12
DESIGNED	P. P. 09/11/14
DRAWN	MG/VK 09/18/14
CHECKED	MG/VK 09/18/14
PAUL J. WILLIAMS, P.E. 78246 STATE OF FLORIDA PROFESSIONAL ENGINEER	



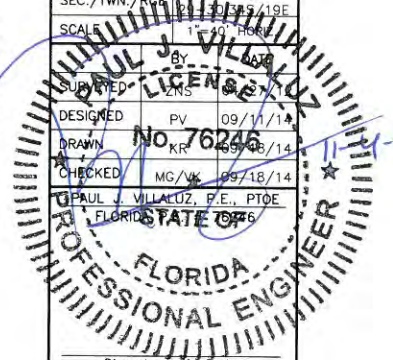
PUBLIC WORKS DEPARTMENT
ENGINEERING SERVICES
1022 26th Avenue East, Bradenton, FL 34208

UPPER MANATEE RIVER ROAD ROADWAY FUNCTIONAL IMPROVEMENTS INTERCONNECT PLANS STA. 41+50 TO STA. 51+40



NO.	REVISION DESCRIPTION	BY	DATE

PROJECT #	307-6082660
SURVEY #	FILE 00-42783
SEC./TWN./RGE.	19-20,
SCALE	1"=40' HORIZ 1"=10' VERT
DESIGNED	PV 09/11/14
DRAWN	KR 09/18/14
CHECKED	MG/WK 09/18/14
PAUL J. VILLALBA, P.E., PTOE FLORIDA STATE OF	
SIGNATURE & DATE	



CALL THE SUNSHINE STATE
ONE CALL 1-800-432-4770
48 HOURS BEFORE DIGGING FOR THE
LOCATION OF UNDERGROUND UTILITIES

COPYRIGHT 2010 MANATEE COUNTY GOVERNMENT I:\P\PD_Engineering\Stara\Highway_Engineering\ROADS\Upper Manatee River Road\TRAFFIC PLANS\ATMS\UMRR ATMS.dwg(C-7, 11/4/2014 10:17 AM Koala Ripley, 1:2, 11x17)

MATCH LINE STA. 46+40

MATCH LINE STA. 51+40

MATCH LINE STA. 41+50

MATCH LINE STA. 46+40

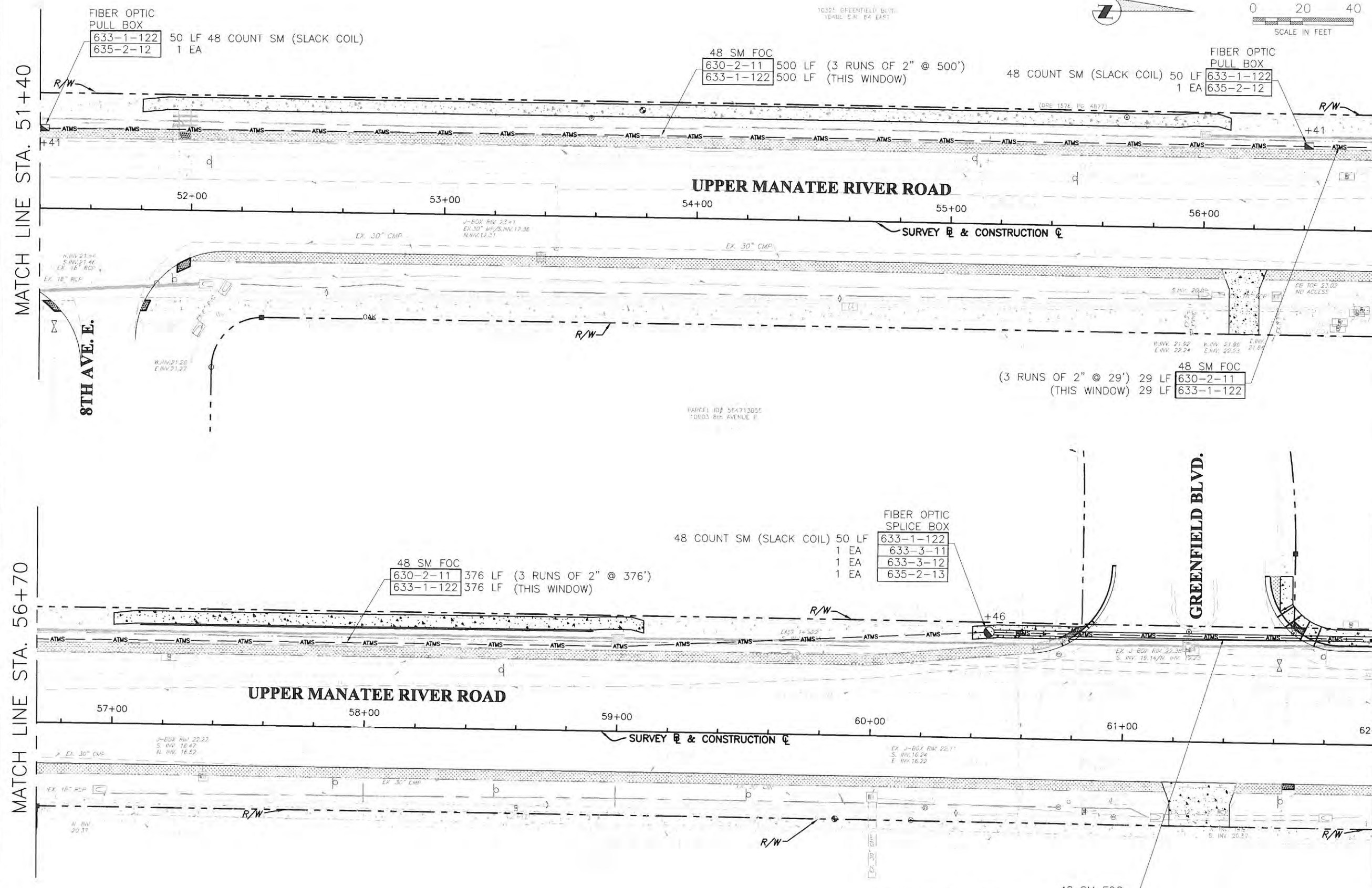
PARCEL ID# 564711056
10600 10TH AVENUE E.

PARCEL ID# 284710006
10600 10TH AVENUE E.



PUBLIC WORKS DEPARTMENT
ENGINEERING SERVICES
1022 26th Avenue East, Bradenton, FL 34208

**UPPER MANATEE RIVER ROAD
ROADWAY FUNCTIONAL
IMPROVEMENTS
INTERCONNECT PLANS
STA. 51+40 TO STA. 62+00**

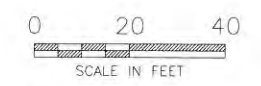
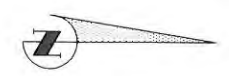


MATCH LINE STA. 51+40

MATCH LINE STA. 56+70

MATCH LINE STA. 56+70

MATCH LINE STA. 62+00



FIBER OPTIC PULL BOX
633-1-122 50 LF 48 COUNT SM (SLACK COIL)
635-2-12 1 EA

48 SM FOC
630-2-11 500 LF (3 RUNS OF 2" @ 500')
633-1-122 500 LF (THIS WINDOW)

FIBER OPTIC PULL BOX
633-1-122 50 LF 48 COUNT SM (SLACK COIL)
635-2-12 1 EA

48 SM FOC
(3 RUNS OF 2" @ 29') 29 LF 630-2-11
(THIS WINDOW) 29 LF 633-1-122

48 SM FOC
630-2-11 376 LF (3 RUNS OF 2" @ 376')
633-1-122 376 LF (THIS WINDOW)

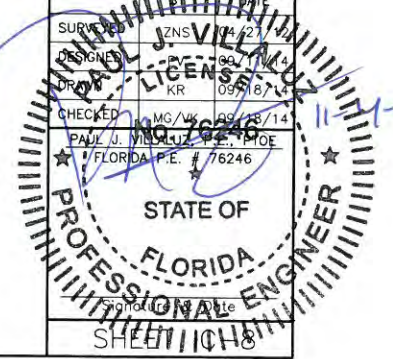
FIBER OPTIC SPLICE BOX
633-1-122 50 LF 48 COUNT SM (SLACK COIL)
1 EA 633-3-11
1 EA 633-3-12
1 EA 635-2-13

48 SM FOC
(3 RUNS OF 2" @ 154') 154 LF 630-2-12
(THIS WINDOW) 154 LF 633-1-122

CALL THE SUNSHINE STATE
ONE CALL 1-800-432-4770
48 HOURS BEFORE DIGGING FOR THE
LOCATION OF UNDERGROUND UTILITIES

NO.	REVISION DESCRIPTION	BY	DATE

PROJECT # 307-6082660
SURVEY # FILE 00-42783
SEC./TWN./RGE 19-20,
29-30,34S/19E
SCALE 1"=40' HORIZ.



COPYRIGHT 2010 MANATEE COUNTY GOVERNMENT | S:\P\MD_Engineering\Shared\Highway_Engineering\ROADS\Upper Manatee River Road\TRAFFIC PLANS\ATMS\UMRR_ATMS.dwg, C-8, 11/14/2014 10:18 AM Kripa Robey, 1:2, 11x17



PUBLIC WORKS DEPARTMENT
ENGINEERING SERVICES
1022 26th Avenue East, Bradenton, FL 34208

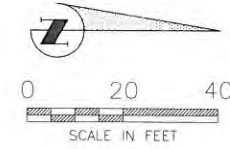
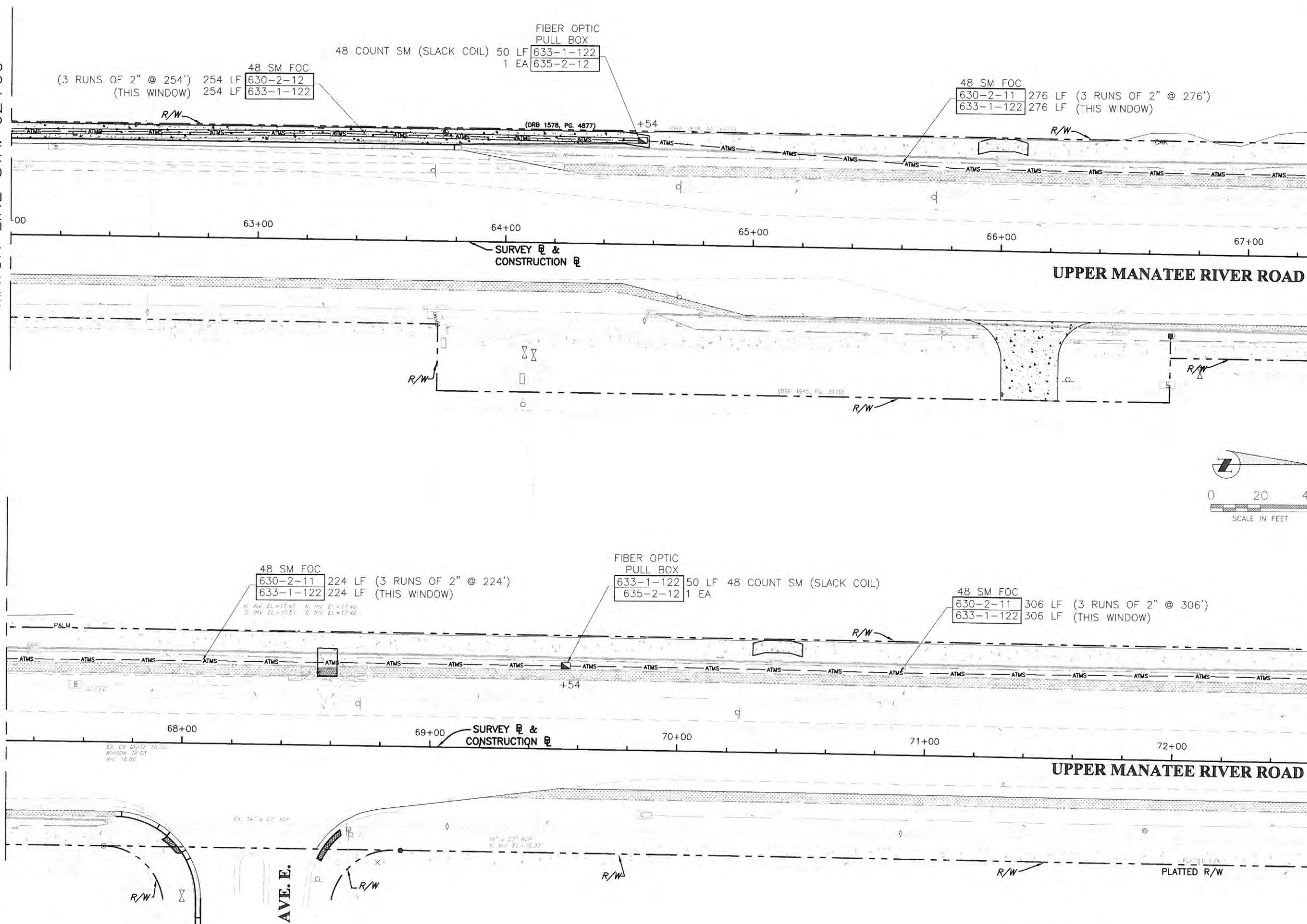
UPPER MANATEE RIVER ROAD ROADWAY FUNCTIONAL IMPROVEMENTS INTERCONNECT PLANS STA. 62+00 TO STA. 72+60

MATCH LINE STA. 62+00

MATCH LINE STA. 67+30

MATCH LINE STA. 67+30

MATCH LINE STA. 72+60



4TH AVE. E.

CALL THE SUNSHINE STATE
ONE CALL 1-800-432-4770
48 HOURS BEFORE DIGGING FOR THE
LOCATION OF UNDERGROUND UTILITIES!

GATES CREEK
UNIT 1, A SUBDIVISION
PLAT BOOK 31, PAGE 64

NO.	REVISION DESCRIPTION	BY	DATE

PROJECT #	307-6082660
SURVEY #	FILE 00-42783
SEC./TWN./RGE	19-20, 29-30,34S/19E
SCALE	1"=40' HORIZ.

SURVEYED BY J. VILKALUIS
 DESIGNED BY J. VILKALUIS
 DRAWN BY J. VILKALUIS
 CHECKED BY J. VILKALUIS
 DATE 09/18/14
 STATE OF FLORIDA P.E. # 76246
 PROFESSIONAL ENGINEER
 SHEET 11 OF 19

COPYRIGHT 2010 MANATEE COUNTY GOVERNMENT. S:\P\W\Engineering\Shore\Highway\Engineering\ROADS\Upper Manatee River Road\TRAFFIC PLANS\ATMS\UMRR_ATMS.dwg, C-9, 11/4/2014 10:19 AM, Kopia Robjay, 1:2, 11x17



PUBLIC WORKS DEPARTMENT
ENGINEERING SERVICES
1022 26th Avenue East, Bradenton, FL 34208

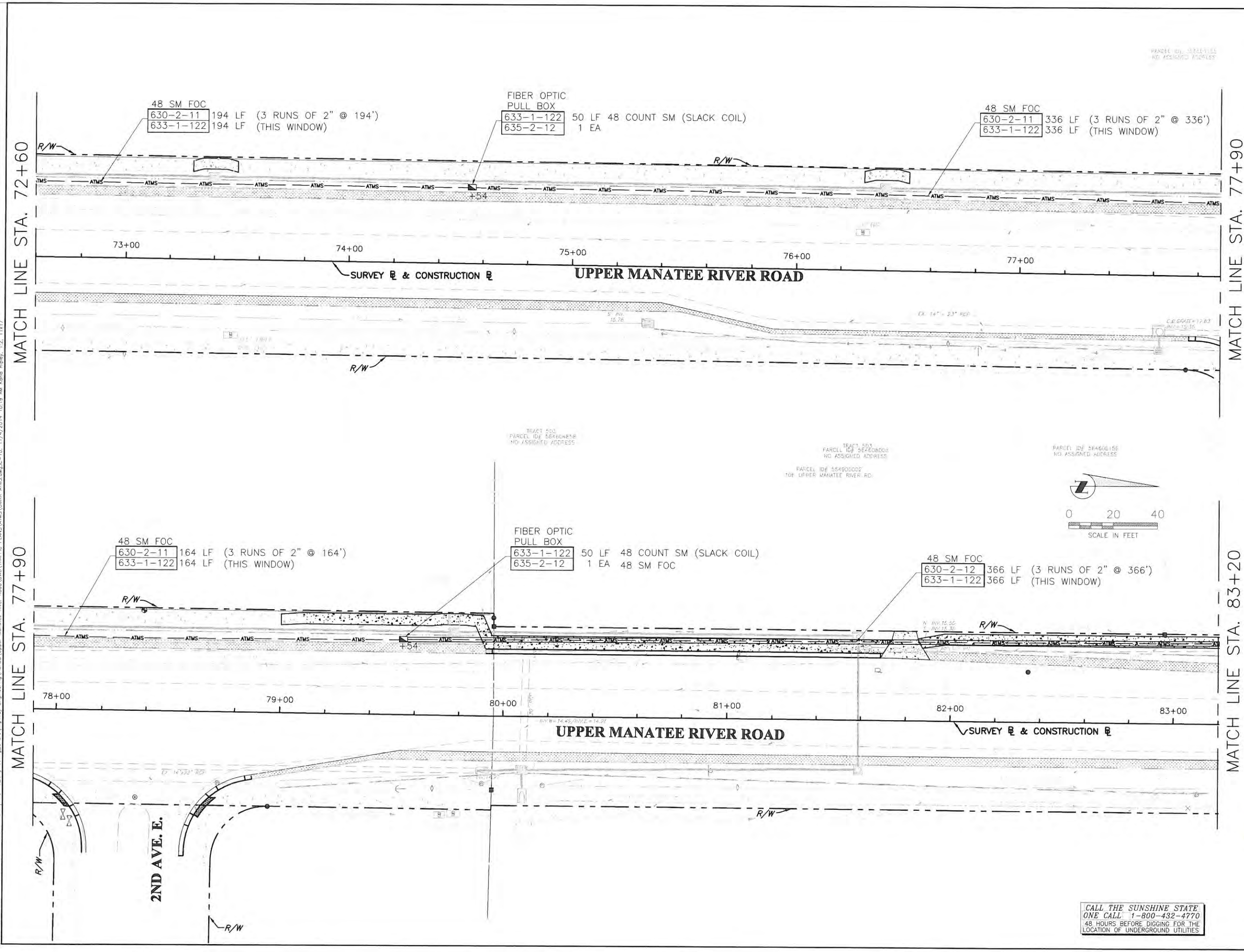
UPPER MANATEE RIVER ROAD ROADWAY FUNCTIONAL IMPROVEMENTS INTERCONNECT PLANS STA. 72+60 TO STA. 83+20

NO.	REVISION DESCRIPTION	BY	DATE

PROJECT #	307-6082660
SURVEY #	FILE 00-42783
SEC./TWN./RGE	19-20, 29-30,34S/19E
SCALE	1"=40' HORIZ.

SURVEYED BY: [Signature] DATE: 04/27/14
 DESIGNED BY: [Signature] DATE: 09/11/13
 DRAWN BY: [Signature] DATE: 09/18/13
 CHECKED BY: [Signature] DATE: 09/18/14
 PAUL J. VILLALUZ
 NO. 76246
 FLORIDA REGISTERED PROFESSIONAL ENGINEER
 STATE OF FLORIDA
 SHEET 10 OF 11

CALL THE SUNSHINE STATE
ONE CALL 1-800-432-4770
48 HOURS BEFORE DIGGING FOR THE
LOCATION OF UNDERGROUND UTILITIES



MATCH LINE STA. 72+60

MATCH LINE STA. 77+90

MATCH LINE STA. 77+90

MATCH LINE STA. 83+20

2ND AVE. E.

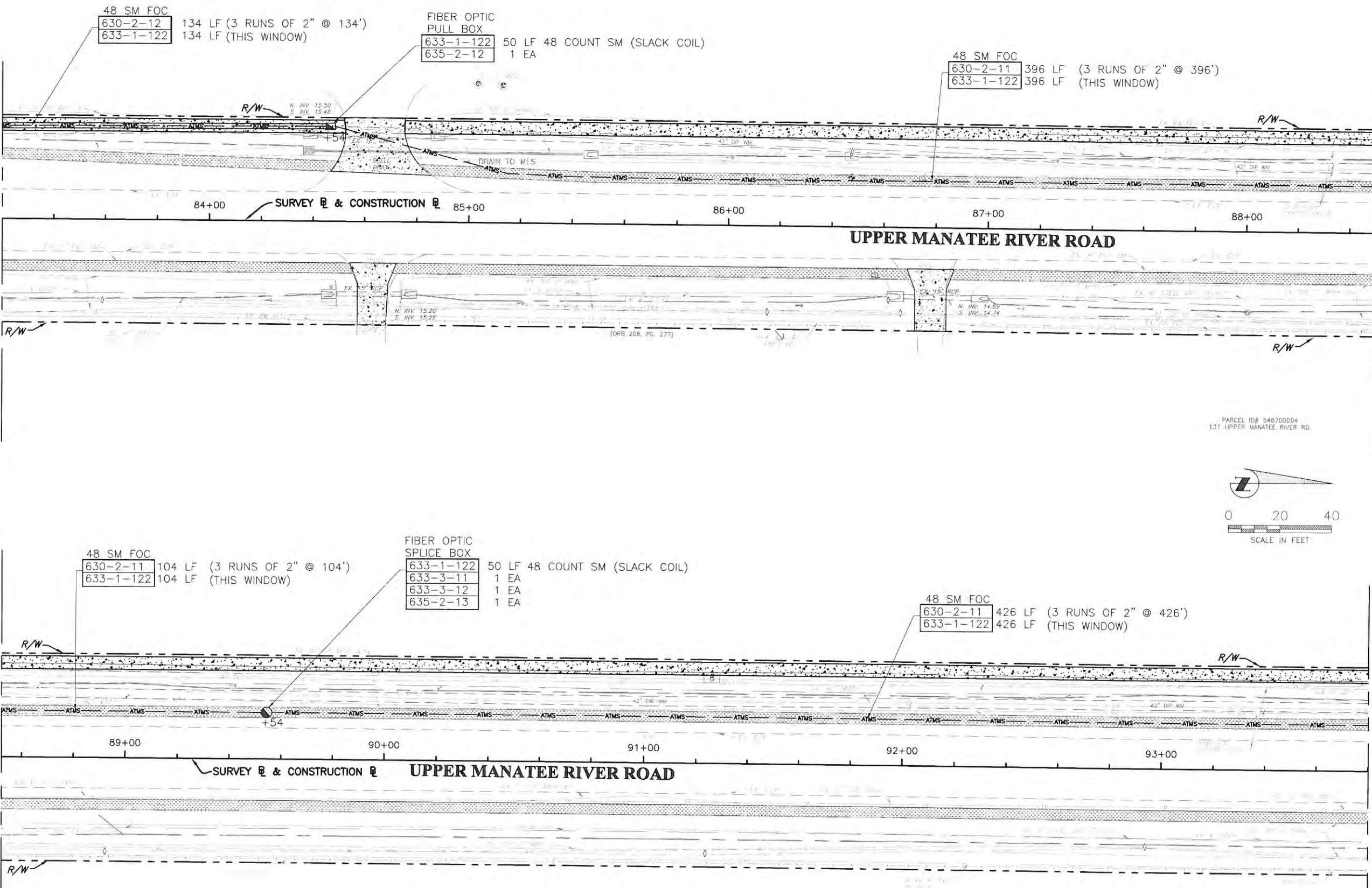
COPYRIGHT 2010 MANATEE COUNTY GOVERNMENT I:\P\O\Engineering\Stations\Highways\Engineering\ROADS\Upper Manatee River Road\TRAFFIC PLANS\ATMS\UMRR_ATMS.dwg, L=10, 11/4/2014 10:19 AM Karla Riphey, 1:2, 11x17

MATCH LINE STA. 83+20

MATCH LINE STA. 88+50

MATCH LINE STA. 88+50

MATCH LINE STA. 93+80



**UPPER MANATEE RIVER ROAD
ROADWAY FUNCTIONAL
IMPROVEMENTS
INTERCONNECT PLANS
STA. 83+20 TO STA. 93+80**

NO.	REVISION DESCRIPTION	BY	DATE

PROJECT #	307-6082660
SURVEY #	FILE 00-42783
SEC./TWN./RGE	19-20, 28-30, 31S/19E
SCALE	1"=40'
DESIGNED BY	J. VILLALBA
DESIGNED DATE	09/16/14
DRAWN BY	MC/14
DRAWN DATE	09/16/14
CHECKED BY	MC/14
CHECKED DATE	09/16/14
PAUL J. VILLALBA, P.E., PTOE	FLORIDA P.E. # 76246

STATE OF
FLORIDA
PROFESSIONAL ENGINEER

CALL THE SUNSHINE STATE
ONE CALL 1-800-432-4770
48 HOURS BEFORE DIGGING FOR THE
LOCATION OF UNDERGROUND UTILITIES

COPYRIGHT 2010, MANATEE COUNTY GOVERNMENT | S:\P\01_Engineering_Share\Highway_Engineering\ROADS\TRAFFIC PLANS\ATMS\UMRR ATMS.dwg, IC-11, 11/14/2014 9:05 AM Karla Raley, 12, 11x17

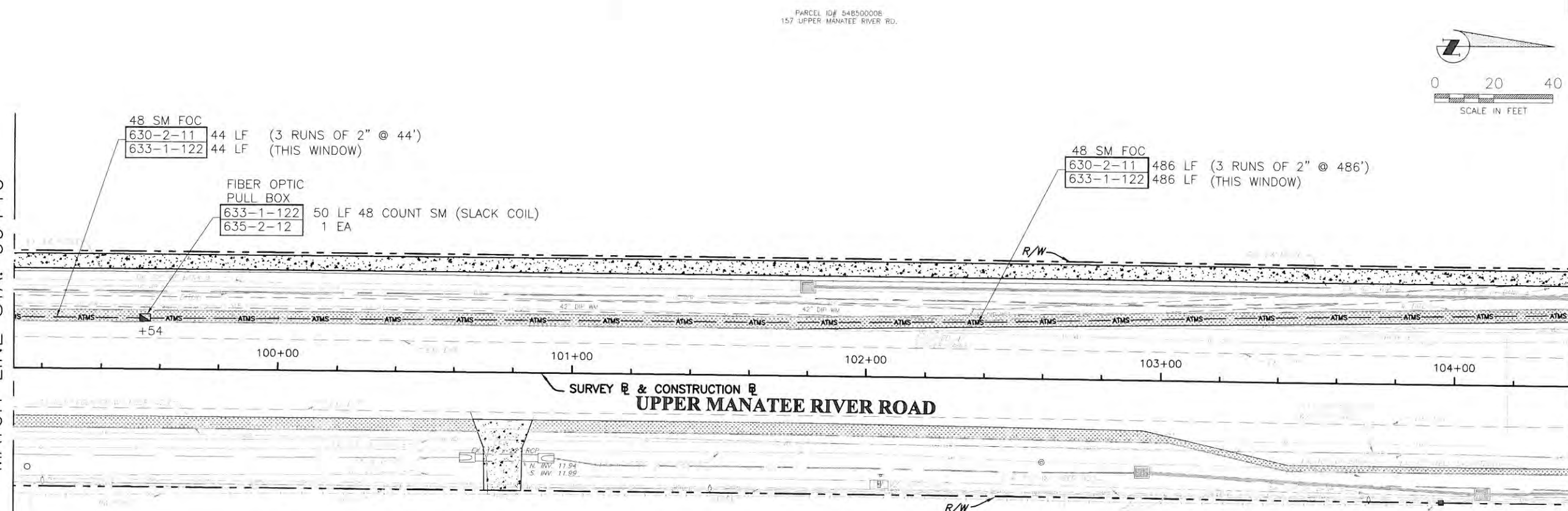
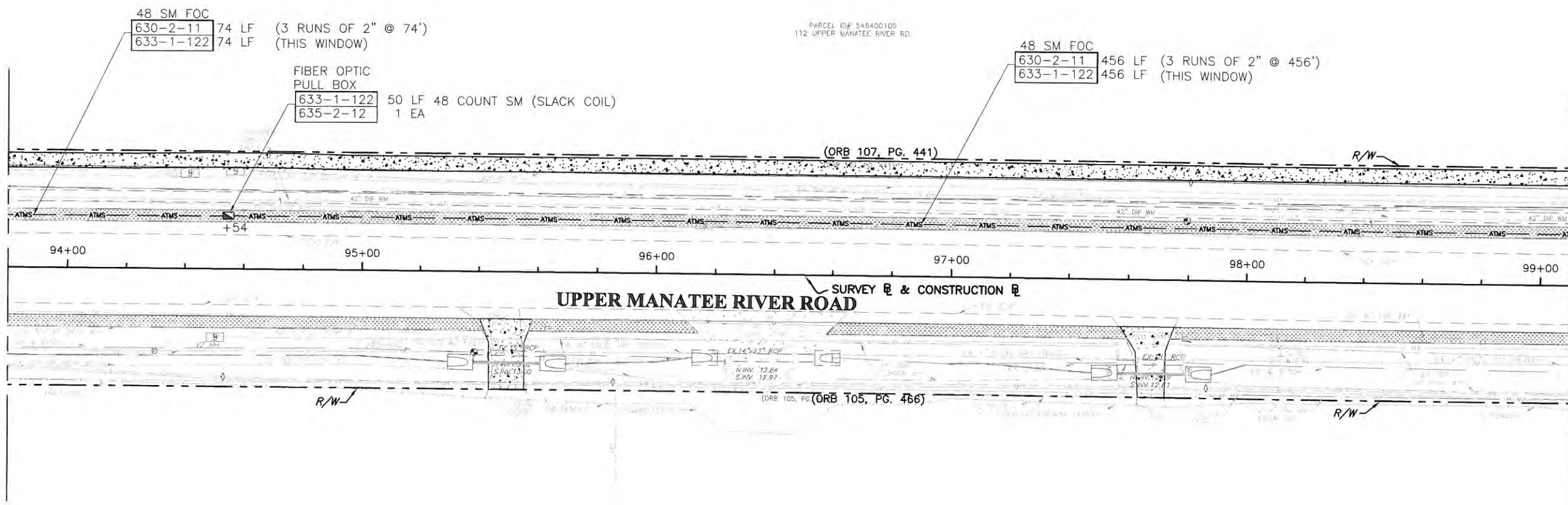
**UPPER MANATEE RIVER ROAD
ROADWAY FUNCTIONAL
IMPROVEMENTS
INTERCONNECT PLANS
STA. 93+80 TO STA. 104+40**

MATCH LINE STA. 93+80

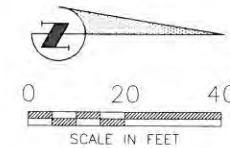
MATCH LINE STA. 99+10

MATCH LINE STA. 99+10

MATCH LINE STA. 104+40



COPYRIGHT 2010, MANATEE COUNTY GOVERNMENT | S:\P\W\Engineering\Sherrin\Highway\Engineering\ROADS\Upper Manatee River Road\DWG\TRAFFIC PLANS\ATMS.dwg | C-12, 11/14/2014 9:06 AM Korib Relyea, 1:2, 11x17



CALL THE SUNSHINE STATE!
ONE CALL 1-800-432-4770
48 HOURS BEFORE DIGGING FOR THE
LOCATION OF UNDERGROUND UTILITIES!

NO.	REVISION DESCRIPTION	BY	DATE

PROJECT #	307-6082660
SURVEY #	FILE 00-42783
SEC./TWN./RGE	19-20, 29-30.34S/19E
SCALE	1"=40' HORIZ.

SURVEYED	ANS	04/27/12
DESIGNED	MC/VK	06/21/12
DRAWN	KA	09/18/12
CHECKED	MC/VK	09/25/14

PAUL J. VILLALBA
PROFESSIONAL ENGINEER
STATE OF FLORIDA
LICENSE # 76246



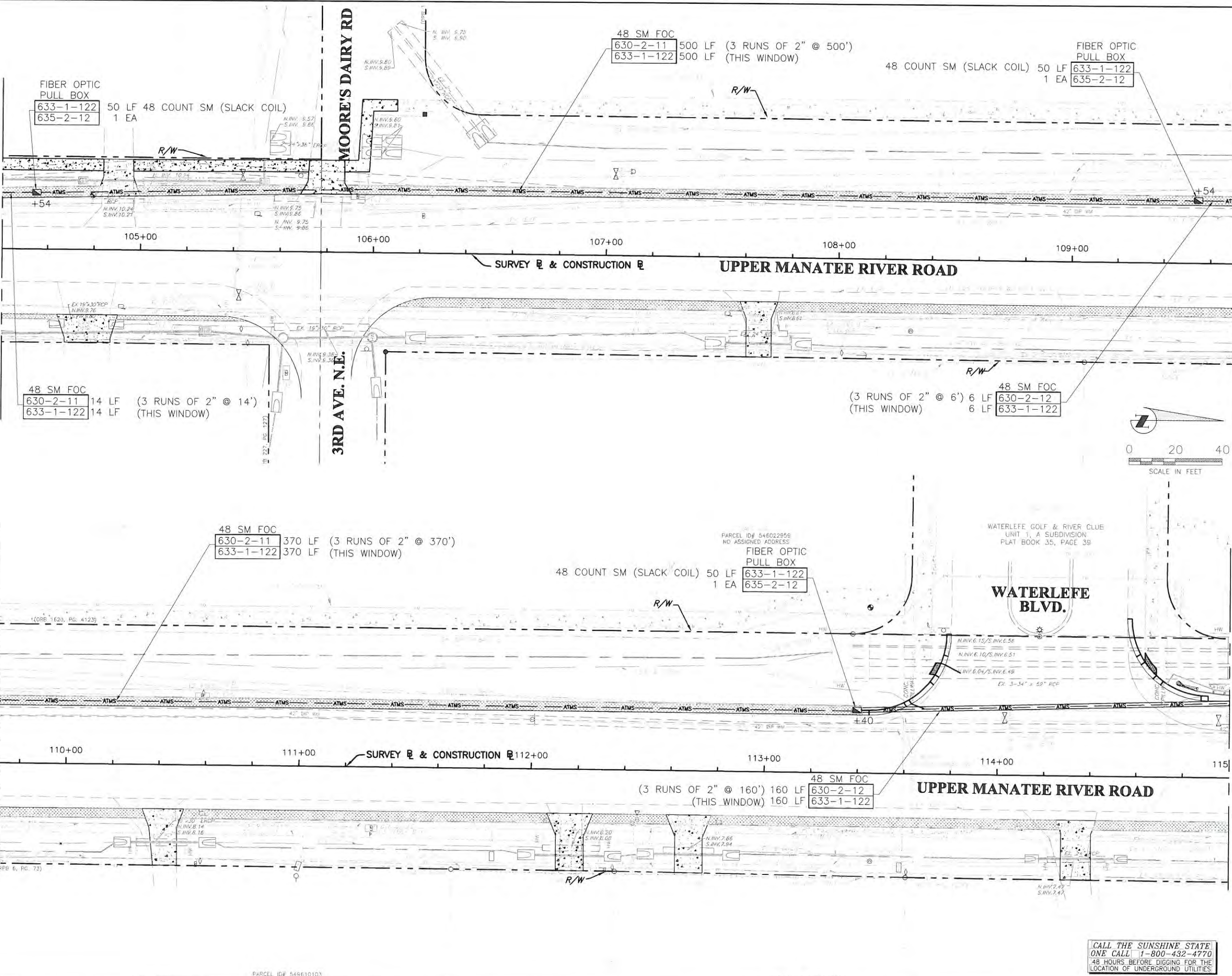
**UPPER MANATEE RIVER ROAD
ROADWAY FUNCTIONAL
IMPROVEMENTS
INTERCONNECT PLANS
STA. 104+40 TO STA. 115+00**

MATCH LINE STA. 104+40

MATCH LINE STA. 109+70

MATCH LINE STA. 109+70

MATCH LINE STA. 115+00

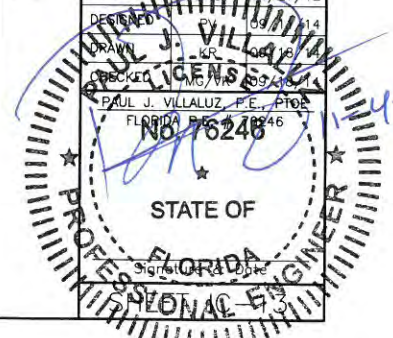


CALL THE SUNSHINE STATE
ONE CALL 1-800-432-4770
48 HOURS BEFORE DIGGING FOR THE
LOCATION OF UNDERGROUND UTILITIES

NO.	REVISION DESCRIPTION	BY	DATE

PROJECT #	307-6082660
SURVEY #	FILE 00-42783
SEC./TWN./RGE	19-20, 29-30.34S/19E
SCALE	1"=40' HORIZ

SURVEYED	BY	DATE

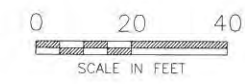
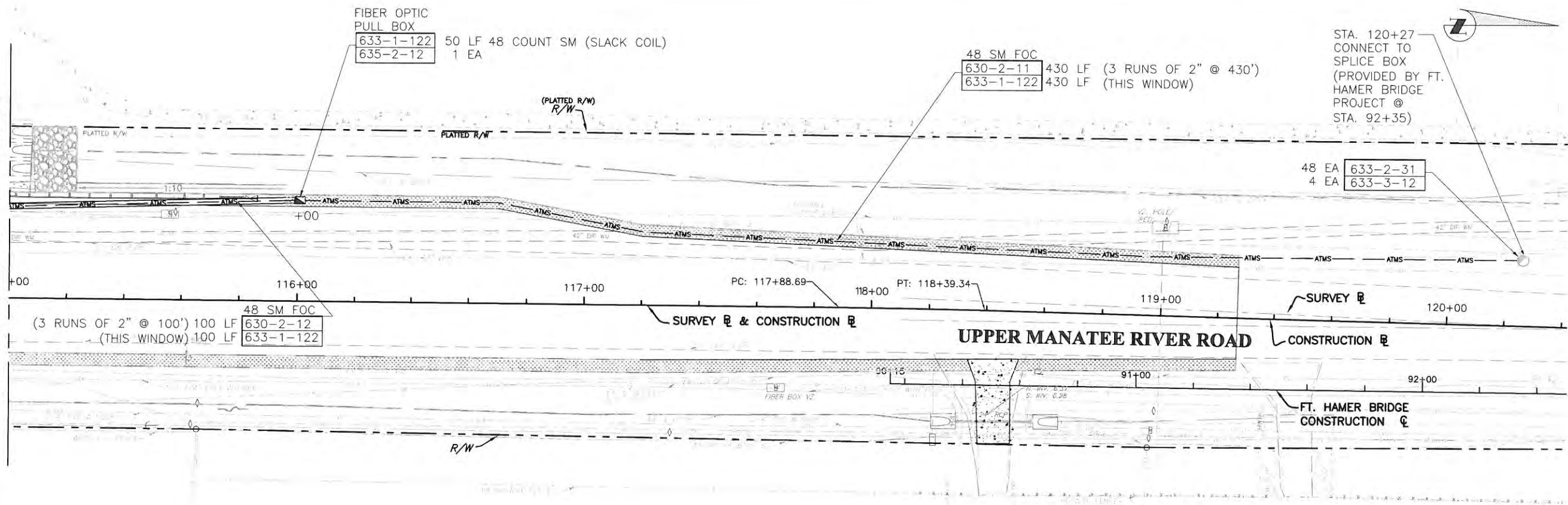


COPYRIGHT 2010, MANATEE COUNTY GOVERNMENT | S:\P\RD_Engineering\Share\Highway_Engineering\ROADS\Upper Manatee River Road\DWG\TRAFFIC PLANS\TIMS\UMR_ATMS\PLANS\C-13_11\14\2014_9_07_AM_Krta_Roady_12_11x17

PARCEL ID# 549610103

PARCEL ID# 546022558

MATCH LINE STA. 115+00



CALL THE SUNSHINE STATE ONE CALL 1-800-432-4770 48 HOURS BEFORE DIGGING FOR THE LOCATION OF UNDERGROUND UTILITIES!



UPPER MANATEE RIVER ROAD ROADWAY FUNCTIONAL IMPROVEMENTS INTERCONNECT PLANS STA. 115+00 TO STA. 123+00

NO.	REVISION DESCRIPTION	BY	DATE

PROJECT #	307-6082660
SURVEY #	FILE 00-42783
SEC./TWN./RGE	19-20, 29-30, 34S/19E
SCALE	1" = 40' HORIZ

SURVEYED BY ZNS 04/26/12
 DRAWN BY KR 09/05/14
 CHECKED BY PAUL J. VILLALUZ, P.E.
 No. 76246
 FLORIDA P.E. # 76246

STATE OF FLORIDA
 PROFESSIONAL ENGINEER

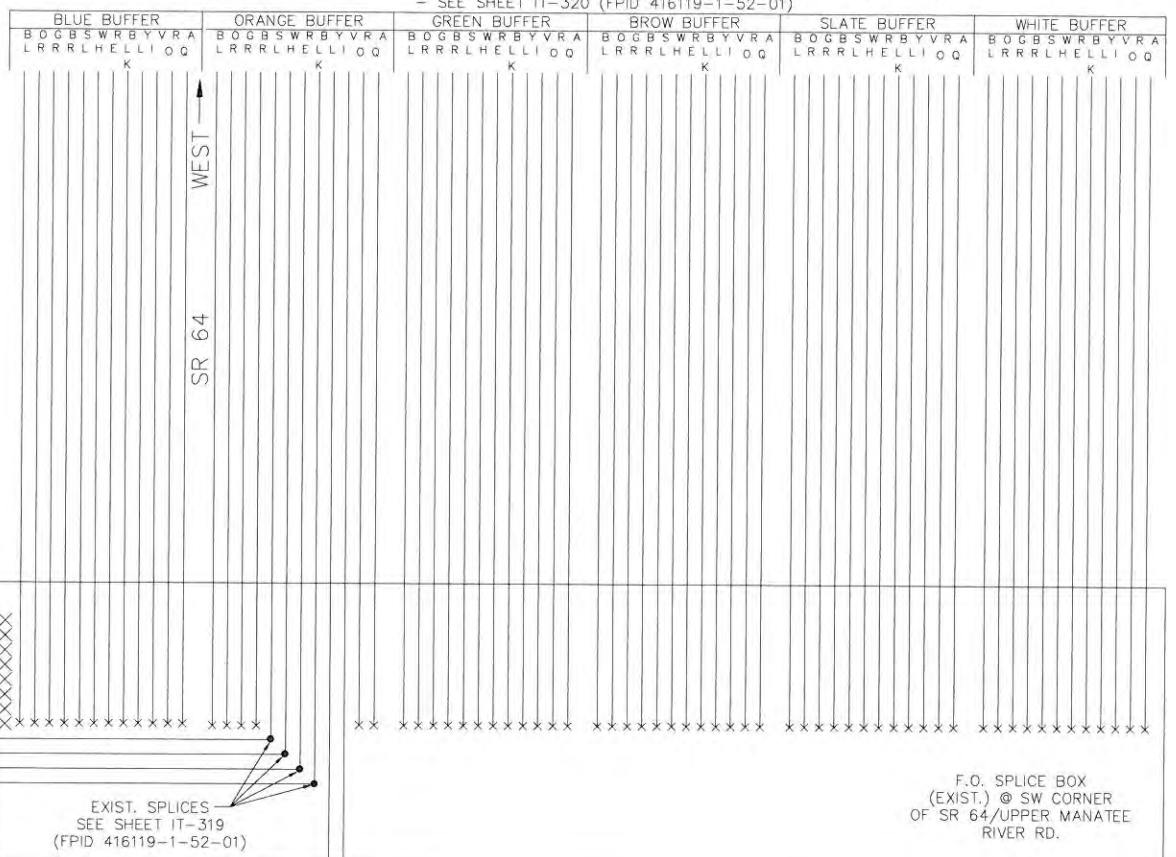
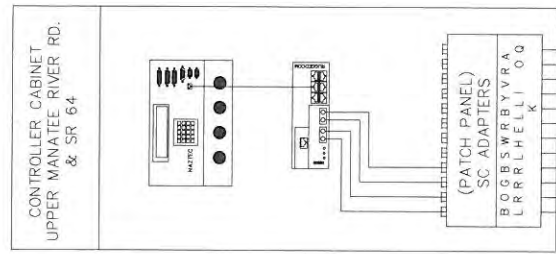
COPYRIGHT 2010, MANATEE COUNTY GOVERNMENT | S:\P\01_Engineering\Shore\Highway_Engineering\ROADS\Upper Manatee River Road\DWG\TRAFFIC_PLANS\MMS\UMR_ATMS\ATMS.dwg | 11/14/2014 9:07 AM Koria Riehm, 1:2, 11x17

COPYRIGHT 2010 MANATEE COUNTY GOVERNMENT | S:\P\O_Engineering_Sharra\Highway_Engineering\ROADS\Upper Manatee River Road\TRAFFIC PLANS\ATMS\11742014_1047 AM Sharra Roby_112_11417

72 SINGLE MODE FIBER OPTIC CABLE TO FIBER PULL BOX AT SR 64/MANATEE AVE. & SR 70/15TH ST. E.
 - SEE SHEET IT-320 (FPID 416119-1-52-01)



**UPPER MANATEE RIVER ROAD
 ROADWAY FUNCTIONAL
 IMPROVEMENTS
 INTERCONNECT PLANS
 SPLICE DIAGRAM**



UPPER MANATEE RIVER ROAD ATMS TRUNKLINE

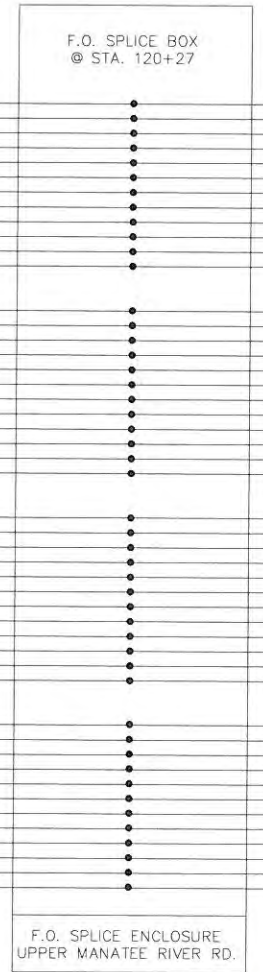
48 SINGLE MODE FIBER OPTIC CABLE

BLUE BUFFER

ORANGE BUFFER

GREEN BUFFER

BROWN BUFFER



F.O. SPLICE ENCLOSURE (EXIST.)
UPPER MANATEE RIVER RD.
& SR 64 (SW CORNER)

F.O. SPLICE ENCLOSURE
UPPER MANATEE RIVER RD.

LAKWOOD RANCH BLVD.
← SOUTH

UPPER MANATEE RIVER RD.
NORTH →

NO.	REVISION DESCRIPTION	BY	DATE

PROJECT # 307-6082660
 SURVEY # FILE 00-42783
 SEC./TWN./RGE 19-20,
 29-30,34S/19E
 SCALE 1"=40' HORIZ.

