

CONTRACT DRAWINGS

SCOUR REMEDIATION PROJECT
10TH STREET W. BRIDGE OVER SNEAD ISLAND CUTOFF
FOR
MANATEE COUNTY, FLORIDA

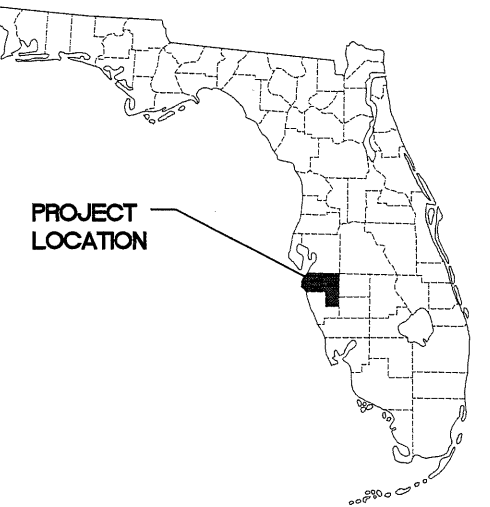
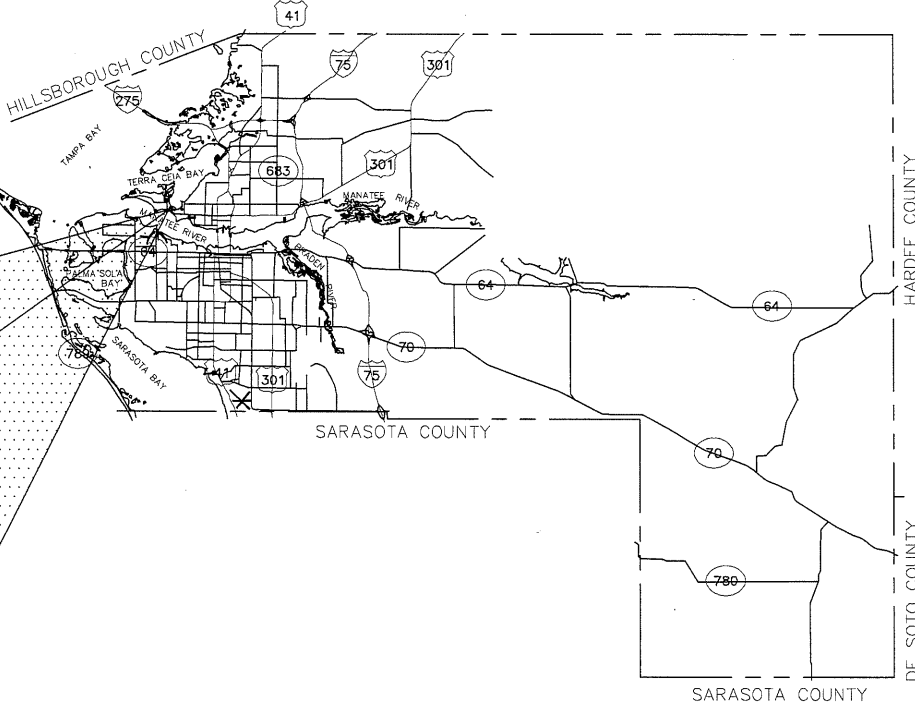
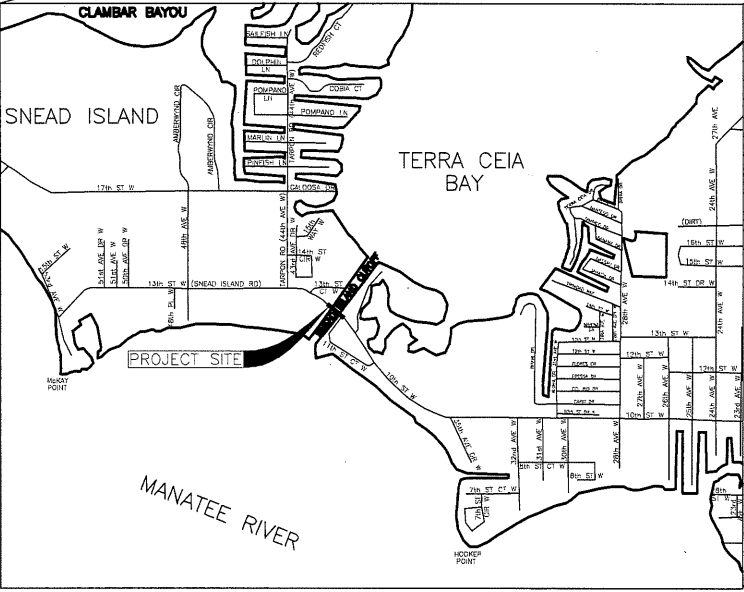
RELATED STANDARDS AND SPECIFICATIONS

- DESCRIPTION
- A. MANUAL OF UNIFORM MINIMUM STANDARDS FOR DESIGN, CONSTRUCTION, AND MAINTENANCE FOR STREETS AND HIGHWAYS, FLORIDA DEPARTMENT OF TRANSPORTATION, (FLORIDA GREEN BOOK), (2011).
 - B. FDOT DESIGN STANDARDS FOR DESIGN, CONSTRUCTION, MAINTENANCE AND UTILITY OPERATIONS ON THE STATE HIGHWAY SYSTEM, 2014 EDITION AND SUPPLEMENTS THERETO.
 - C. FHWA MANUAL ON UNIFORM TRAFFIC CONTROL DEVICES, (MUTCD), (2009).
 - D. FDOT STANDARD SPECIFICATIONS FOR ROAD AND BRIDGE CONSTRUCTION, 2014 EDITION AND SUPPLEMENTS THERETO.
 - E. STATE OF FLORIDA EROSION AND SEDIMENT CONTROL DESIGNER AND REVIEWER MANUAL (JUNE 2007).

UTILITY WARNING NOTE

ABOVE GROUND AND / OR UNDERGROUND UTILITIES MAY BE IN THE AREA OF THIS PROJECT - PROCEED WITH CAUTION - THE CONTRACTOR SHALL CALL SUNSHINE STATE "ONE CALL" AT 1-800-432-4770 AND THE UTILITY OWNERS IN ADVANCE OF BEGINNING WORK, IN ACCORDANCE WITH CHAPTER 556, FLORIDA STATUTES.

SUMMARY OF REVISIONS	
DATE	DESCRIPTION



COMPONENTS OF CONTRACT PLANS SET
SCOUR REMEDIATION PLANS

INDEX OF SCOUR REMEDIATION PLANS

SHEET NO	SHEET DESCRIPTION
1	KEY SHEET
2	SUMMARY OF PAY ITEMS
3	GENERAL NOTES
4	CONSTRUCTION NOTES
5	PLAN AND ELEVATION
6	SCOUR COUNTERMEASURE BRIDGE PLAN
7	SCOUR COUNTERMEASURE BRIDGE ELEVATION
8	SCOUR COUNTERMEASURE BRIDGE SECTION
9	EROSION CONTROL PLAN
10	STORM WATER POLLUTION PREVENTION PLAN (1)
11	STORM WATER POLLUTION PREVENTION PLAN (2)
12	SOIL BORING

LENGTH OF PROJECT		
	LIN. FT.	MILES
ROADWAY	0	0.000
BRIDGES	260	0.049
GROSS LENGTH OF PROJECT	260	0.049

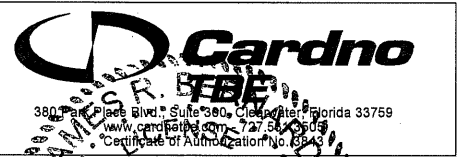
FINAL PLANS SUBMITTAL

JUNE 30, 2014

ATTENTION IS DIRECTED TO THE FACT THAT THESE PLANS MAY HAVE BEEN REDUCED IN SIZE BY REPRODUCTION. THIS MUST BE CONSIDERED WHEN OBTAINING SCALED DATA.

DATE: 6-30-2014
SHEET: 1

PLANS PREPARED BY:



RECORD

JAMES R. BERNARD, PE
FL. LICENSE NO. 56499



48 HOURS BEFORE DIGGING
"CALL SUNSHINE"
1-800-432-4770

10TH STREET W. BRIDGE OVER SNEAD ISLAND CUTOFF				
LINE NO.	ITEM NO.	ITEM DESCRIPTION	EST. QTY	UNIT MEAS.
1.	101-1	MOBILIZATION	1	LS
2.	104-11	FLOATING TURBIDITY BARRIER	672	LF
3.	530-78-A	SCOUR COUNTERMEASURE - OPTION A, ARTICULATING BLOCK MAT	814	SY
4.	530-78-B	SCOUR COUNTERMEASURE - OPTION B, ARTICULATING CONCRETE BLOCK	814	SY

NOTE: ONLY ONE SCOUR COUNTERMEASURE OPTION WILL BE CONSTRUCTED.

--	--	--	--	--	--	--	--	--	--	--	--	--	--	--	--	--	--	--	--	--	--	--	--	--	--	--	--	--	--	--	--	--	--	--	--	--	--	--	--	--	--	--	--	--	--	--	--	--	--	--	--	--	--	--	--	--	--	--	--	--	--	--	--	--	--	--	--	--	--	--	--	--	--	--	--	--	--	--	--	--	--	--	--	--	--	--	--	--	--	--	--	--	--	--	--	--	--	--	--	--	--	--	--	--	--	--	--	--	--	--	--	--	--	--	--	--	--	--	--	--	--	--	--	--	--	--	--	--	--	--	--	--	--	--	--	--	--	--	--	--	--	--	--	--	--	--	--	--	--	--	--	--	--	--	--	--	--	--	--	--	--	--	--	--	--	--	--	--	--	--	--	--	--	--	--	--	--	--	--	--	--	--	--	--	--	--	--	--	--	--	--	--	--	--	--	--	--	--	--	--	--	--	--	--	--	--	--	--	--	--	--	--	--	--	--	--	--	--	--	--	--	--	--	--	--	--	--	--	--	--	--	--	--	--	--	--	--	--	--	--	--	--	--	--	--	--	--	--	--	--	--	--	--	--	--	--	--	--	--	--	--	--	--	--	--	--	--	--	--	--	--	--	--	--	--	--	--	--	--	--	--	--	--	--	--	--	--	--	--	--	--	--	--	--	--	--	--	--	--	--	--	--	--	--	--	--	--	--	--	--	--	--	--	--	--	--	--	--	--	--	--	--	--	--	--	--	--	--	--	--	--	--	--	--	--	--	--	--	--	--	--	--	--	--	--	--	--	--	--	--	--	--	--	--	--	--	--	--	--	--	--	--	--	--	--	--	--	--	--	--	--	--	--	--	--	--	--	--	--	--	--	--	--	--	--	--	--	--	--	--	--	--	--	--	--	--	--	--	--	--	--	--	--	--	--	--	--	--	--	--	--	--	--	--	--	--	--	--	--	--	--	--	--	--	--	--	--	--	--	--	--	--	--	--	--	--	--	--	--	--	--	--	--	--	--	--	--	--	--	--	--	--	--	--	--	--	--	--	--	--	--	--	--	--	--	--	--	--	--	--	--	--	--	--	--	--	--	--	--	--	--	--	--	--	--	--	--	--	--	--	--	--	--	--	--	--	--	--	--	--	--	--	--	--	--	--	--	--	--	--	--	--	--	--	--	--	--	--	--	--	--	--	--	--	--	--	--	--	--	--	--	--	--	--	--	--	--	--	--	--	--	--	--	--	--	--	--	--	--	--	--	--	--	--	--	--	--	--	--	--	--	--	--	--	--	--	--	--	--	--	--	--	--	--	--	--	--	--	--	--	--	--	--	--	--	--	--	--	--	--	--	--	--	--	--	--	--	--	--	--	--	--	--	--	--	--	--	--	--	--	--	--	--	--	--	--	--	--	--	--	--	--	--	--	--	--	--	--	--	--	--	--	--	--	--	--	--	--	--	--	--	--	--	--	--	--	--	--	--	--	--	--	--	--	--	--	--	--	--	--	--	--	--	--	--	--	--	--	--	--	--	--	--	--	--	--	--	--	--	--	--	--	--	--	--	--	--	--	--	--	--	--	--	--	--	--	--	--	--	--	--	--	--	--	--	--	--	--	--	--	--	--	--	--	--	--	--	--	--	--	--	--	--	--	--	--	--	--	--	--	--	--	--	--	--	--	--	--	--	--	--	--	--	--	--	--	--	--	--	--	--	--	--	--	--	--	--	--	--	--	--	--	--	--	--	--	--	--	--	--	--	--	--	--	--	--	--	--	--	--	--	--	--	--	--	--	--	--	--	--	--	--	--	--	--	--	--	--	--	--	--	--	--	--	--	--	--	--	--	--	--	--	--	--	--	--	--	--	--	--	--	--	--	--	--	--	--	--	--	--	--	--	--	--	--	--	--	--	--	--	--	--	--	--	--	--	--	--	--	--	--	--	--	--	--	--	--	--	--	--	--	--	--	--	--	--	--	--	--	--	--	--	--	--	--	--	--	--	--	--	--	--	--	--	--	--	--	--	--	--	--	--	--	--	--	--	--	--	--	--	--	--	--	--	--	--	--	--	--	--	--	--	--	--	--	--	--	--	--	--	--	--	--	--	--	--	--	--	--	--	--	--	--	--	--	--	--	--	--	--	--	--	--	--	--	--	--	--	--	--	--	--	--	--	--	--	--	--	--	--	--	--	--	--	--	--	--	--	--	--	--	--	--	--	--	--	--	--	--	--	--	--	--	--	--	--	--	--	--	--	--	--	--	--	--	--	--	--	--	--	--	--	--	--	--	--	--	--	--	--	--	--	--	--	--	--	--	--	--	--	--	--	--	--	--	--	--	--	--	--	--	--	--	--	--	--	--	--	--	--	--	--	--	--	--	--	--	--	--	--	--	--	--	--	--	--	--	--	--	--	--	--	--	--	--	--	--	--	--	--	--	--	--	--	--	--	--	--	--	--	--	--	--	--	--	--	--	--	--	--	--	--	--	--	--	--	--	--	--	--	--	--	--	--	--	--	--	--	--	--	--	--	--	--	--	--	--	--	--	--	--	--	--	--	--	--	--	--	--	--	--	--	--	--	--	--	--	--	--	--	--	--	--	--	--	--	--	--	--	--	--	--	--	--	--	--	--	--	--	--	--	--	--	--	--	--	--	--	--	--	--	--	--	--	--	--	--	--	--	--	--	--	--	--	--	--	--	--	--	--	--	--	--	--	--	--	--	--	--	--	--	--	--	--	--	--	--	--	--	--	--	--	--	--	--	--	--	--	--	--	--	--	--	--	--	--	--	--	--	--	--	--	--	--	--	--	--	--	--	--	--	--	--	--	--	--	--	--	--	--	--	--	--	--	--	--	--	--	--	--	--	--	--	--	--	--	--	--	--	--	--	--	--	--	--	--	--	--	--	--	--	--	--	--	--	--	--	--	--	--	--	--	--	--	--	--	--	--	--	--	--	--	--	--	--	--	--	--	--	--	--	--	--	--	--	--	--	--	--	--	--	--	--	--	--	--	--	--	--	--	--	--	--	--	--	--	--	--	--	--	--	--	--	--	--	--	--	--	--	--	--	--	--	--	--	--	--	--	--	--	--	--	--	--	--	--	--	--	--	--	--	--	--	--	--	--	--	--	--	--	--	--	--	--	--	--	--	--	--	--	--	--	--	--	--	--	--	--	--	--	--	--	--	--	--	--	--	--	--	--	--	--	--	--	--	--	--	--	--	--	--	--	--	--	--	--	--	--	--	--	--	--	--	--	--	--	--	--	--	--	--	--	--	--	--	--	--	--	--	--	--	--	--	--	--	--	--	--	--	--	--	--	--	--	--	--	--	--	--	--	--	--	--

GENERAL NOTES

1.

PROJECT LOCATION:
BRIDGE NUMBER 130007, LOCATED IN MANATEE COUNTY, CARRIES 10TH STREET WEST OVER SNEAD ISLAND CUTOFF SEPARATING THE MANATEE RIVER TO THE SOUTH AND TERRA CEIA BAY TO THE NORTH.
2.

THE CONTRACTOR SHALL FIELD VERIFY ANY AND ALL EXISTING CONDITIONS PRIOR TO COMMENCING CONSTRUCTION, AND SHALL NOTIFY THE ENGINEER PROMPTLY OF ANY DISCREPANCIES.
3.

THE CONSTRUCTION LENGTHS INDICATED IN THESE PLANS ARE APPROXIMATE. ACTUAL LIMITS MAY BE SET IN THE FIELD AS DIRECTED BY THE ENGINEER.
4.

LOCATIONS, ELEVATIONS AND DIMENSIONS OF EXISTING UTILITIES, STRUCTURES, AND OTHER FEATURES ARE SHOWN ACCORDING TO THE BEST INFORMATION AVAILABLE AT THE TIME THESE DRAWINGS WERE PREPARED, BUT DO NOT PURPORT TO BE ABSOLUTELY CORRECT. THE CONTRACTOR SHALL BE RESPONSIBLE FOR DETERMINING THE EXACT SIZE, LOCATION, DEPTH, HEIGHT, ELEVATION, DIMENSION, AND EXTENT OF ALL UNDERGROUND AND OVERHEAD FACILITIES AND OTHER FEATURES AFFECTING HIS WORK PRIOR TO PROCEEDING WITH ANY CONSTRUCTION ACTIVITY THAT MAY AFFECT SUCH FACILITIES. THE CONTRACTOR SHALL BE RESPONSIBLE FOR ANY DAMAGE CAUSED BY FAILURE TO COMPLY WITH THESE INSTRUCTIONS.
5.

THE CONTRACTOR SHALL BE RESPONSIBLE FOR THE COMPLETE COORDINATION OF CONSTRUCTION SCHEDULING BETWEEN THE CONTRACTOR AND ALL UTILITY AGENCIES.

NOTE: THIS INCLUDES MEETING WITH UTILITY AGENCIES PRIOR TO THE PRE- CONSTRUCTION CONFERENCE TO ADJUST THEIR SCHEDULES TO COINCIDE WITH THE CONTRACTORS CONSTRUCTION SCHEDULE.
6.

EXCEPT WHERE THE PLANS AND SPECIFICATIONS PROVIDE THAT SUCH WORK SHALL BE PERFORMED UNDER THE CONTRACT FOR THIS PROJECT, ALL UTILITIES INTERFERING WITH CONSTRUCTION SHALL BE REMOVED, RELOCATED OR ADJUSTED BY THEIR OWNERS, AT THEIR EXPENSE. THE CONTRACTOR SHALL ARRANGE HIS SCHEDULE TO ALLOW UTILITY OWNERS TIME FOR THE NECESSARY RELOCATION AND ADJUSTMENT OF UTILITIES AND RELATED STRUCTURES. THE FOLLOWING UTILITIES MAY HAVE LINES AND FACILITIES WITHIN THE PROJECT AREA.

1)

BRIGHTHOUSE NETWORKS MANATEE

941.345.1348 EXT 21348 (TOM WRIGHT)

2)

CITY OF PALMETTO

941.723.4580 EXT 2110 (ALLEN TUSING)

3)

FLORIDA POWER & LIGHT

800.868.9554 (TRACY STERN)

4)

VERIZON OF FLORIDA INC.

813.627.8343 (DAVID WYNNS)
7.

ABOVE GROUND AND/OR UNDERGROUND UTILITIES MAY BE IN THE AREA OF THIS PROJECT - PROCEED WITH CAUTION - THE CONTRACTOR SHALL CALL SUNSHINE STATE ONE CALL (1-800-432-4770) AND THE UTILITY OWNERS IN ADVANCE OF BEGINNING WORK, IN ACCORDANCE WITH CHAPTER 556, FLORIDA STATUTES, UNDERGROUND FACILITY DAMAGE PREVENTION AND SAFETY. ALL UTILITY OWNERS MAY NOT BE A MEMBER, REQUIRING DIRECT CONTACT. THE CONTRACTOR SHALL FURTHER COORDINATE WITH UTILITY OWNERS TO RESOLVE CONFLICTS THAT MAY ARISE IN THE FIELD DURING CONSTRUCTION. THE CONTRACTOR WILL BE RESPONSIBLE FOR ANY UTILITIES DAMAGED AS A RESULT OF THE CONTRACTOR'S FAILURE TO CALL "SUNSHINE STATE ONE CALL" AND THE UTILITY OWNERS.
8.

SEPARATE PAYMENT SHALL BE MADE ONLY FOR THE ITEMS OF WORK LISTED AND IDENTIFIED BY APPROPRIATE PAY ITEM ON THE BID FORM. THE COST OF ANY RELATED WORK NOT SPECIFICALLY IDENTIFIED, BUT WHICH IS REQUIRED FOR SATISFACTORY COMPLETION OF THE WORK, SHALL BE CONSIDERED TO BE INCLUDED IN THE CONTRACT PRICE FOR THE APPROPRIATE BID ITEM.
9.

PAY ITEM 101-1 INCLUDES PAYMENT TO FURNISH, OPERATE AND MAINTAIN BOATS FOR THE ENGINEER AND COUNTY REPRESENTATIVES.
10.

PAY ITEM 104-11 INCLUDES PAYMENT FOR PLACING AND RELOCATING TURBIDITY BARRIER, AS WELL AS, ALL EROSION CONTROL.
11.

THE CONTRACTOR SHALL CONTACT THE UNITED STATES COAST GUARD, TAMPA OFFICE AT (813) 228-2189 AND REQUEST A NOTICE TO MARINERS BE PUBLISHED PRIOR TO PLACEMENT OF FLOATING EQUIPMENT IN THE CHANNEL. CLOSING OF THE MAIN CHANNEL SHALL NOT BE PERMITTED UNLESS APPROVAL IS GIVEN BY THE UNITED STATES COAST GUARD AND THE ENGINEER.

12.

EXERCISE NECESSARY PRECAUTIONS TO PREVENT DAMAGE TO THE BRIDGE. EQUIPMENT OR MATERIALS SHALL NOT BE TIED TO, OR PLACED UPON ANY PART OF THE EXISTING BRIDGE WITHOUT PRIOR APPROVAL OF THE ENGINEER.
13.

LANE CLOSURES OR OTHER TRAFFIC IMPACTING ACTIVITIES ARE STRONGLY DISCOURAGED. SHOULD THE CONTRACTOR DEEM THAT WORK FROM THE BRIDGE OR ROADWAY IS NECESSARY, THE CONTRACTOR SHALL BE RESPONSIBLE FOR PREPARING A MAINTENANCE OF TRAFFIC PLAN AND SUBMITTING IT TO THE COUNTY FOR REVIEW AT THE TIME OF BID. THE CONTRACTOR'S MAINTENANCE OF TRAFFIC PLAN SHALL BE IN ACCORDANCE WITH THE LATEST EDITION OF THE FDOT 600 SERIES STANDARD INDICES. IT MUST BE DESIGNED AND SEALED BY A FLORIDA LICENSED ENGINEER WITH A CURRENT ADVANCED WORK ZONE TRAFFIC CONTROL CERTIFICATION. NO SEPARATE PAYMENT SHALL BE MADE FOR MAINTENANCE OF TRAFFIC AND THE COUNTY RESERVES THE RIGHT TO REJECT THE BID BASED ON THE REQUIREMENT FOR MAINTENANCE OF TRAFFIC.
14.

DUE TO PROTECTED WETLANDS AND MINIMAL COUNTY RIGHT OF WAY AT BRIDGE LOCATION, CONSTRUCTION ACCESS IS LIMITED. DELIVERY OF MATERIAL AND EQUIPMENT TO THIS LOCATION WILL REQUIRE THE USE OF WATER BORNE CRAFT AND AN OFF-SITE STAGING AREA PROVIDED BY THE CONTRACTOR. NO WORK OR ACCESS SHALL BE ALLOWED FROM THE ROADWAY OR BRIDGE. NO ADDITIONAL COMPENSATION WILL BE PAID FOR SPECIAL DELIVERY REQUIREMENTS OR THE OFF-SITE STAGING AREA.
15.

THE CONTRACTOR SHALL COMPLY WITH COAST GUARD REGULATIONS TO PROTECT AND MAINTAIN ALL BOAT TRAFFIC. CONTRACTOR SHALL INITIALLY NOTIFY PROPERTY OWNERS AND MARINA USERS LOCATED ALONG SNEAD ISLAND CUTOFF 14 DAYS PRIOR TO CONSTRUCTION. THE CONTRACTOR SHALL ALSO NOTIFY OWNERS REGARDING ACTIVITIES THAT MAY AFFECT BOAT ACCESS AT LEAST 24 HOURS PRIOR TO ONSET OF ACTIVITY. A SCHEDULE OF ACTIVITIES SHALL BE INCLUDED WITH NOTIFICATION.
16.

ALL MATERIALS NOT CLAIMED BY THE COUNTY SHALL BECOME PROPERTY OF THE CONTRACTOR, AND SHALL BE DISPOSED OF BY THE CONTRACTOR IN AREAS PROVIDED BY THE CONTRACTOR. THIS WORK SHALL BE INCLUDED IN AND PAID FOR UNDER PAY ITEM 530-78.
17.

UNSUITABLE MATERIAL SHALL BECOME THE PROPERTY OF THE CONTRACTOR AND SHALL BE DISPOSED OF OFF SITE, AT A SUITABLE SITE PROVIDED BY THE CONTRACTOR. THE CONTRACTOR SHALL BE RESPONSIBLE FOR ANY AND ALL PERMITS AND PERMITTING FEES REQUIRED FOR THE TRANSPORT AND DISPOSAL OF UNSUITABLE MATERIAL.
18.

OVERALL CLEAN-UP SHALL BE ACCOMPLISHED BY THE CONTRACTOR TO THE SATISFACTION OF THE ENGINEER. ANY AND ALL EXPENSES INCURRED FOR THIS WORK SHALL BE INCLUDED IN THE UNIT PRICE BID FOR MOBILIZATION.
19.

THE CONTRACTOR SHALL ENDEAVOR TO PROTECT PRIVATE PROPERTY. ANY PRIVATELY OWNED FEATURES LOCATED ON PRIVATE PROPERTY AND OUTSIDE THE DESIGNATED AREA OF CONSTRUCTION WHICH ARE DAMAGED AS A RESULT OF CONSTRUCTION ACTIVITIES SHALL BE REPAIRED IN A TIMELY MANNER AT THE EXPENSE OF THE CONTRACTOR. PAYMENT SHALL NOT BE MADE FOR THIS WORK.
20.

BANKS SHALL BE PROTECTED FROM EROSION OR COLLAPSE DURING CONSTRUCTION. ALL BANKS AND WATERWAYS SHALL BE RESTORED TO THEIR PRE-CONSTRUCTION CONFIGURATION AND PROTECTED FROM EROSION.
21.

ANY DAMAGE TO STATE, COUNTY, OR LOCAL ROADS CAUSED BY THE CONTRACTOR'S HAULING OR EXCAVATION EQUIPMENT SHALL BE REPAIRED BY THE CONTRACTOR TO THE SATISFACTION OF THE ENGINEER. PAYMENT SHALL NOT BE MADE FOR THIS WORK.
22.

THE CONTRACTOR SHALL BE RESPONSIBLE FOR THE COMPLETE STAKE-OUT OF THE PROJECT, I.E., LINE, GRADE, SLOPE, UTILITY RELOCATIONS OR ANY OTHER STAKE-OUT THAT MAY BE REQUIRED TO COMPLETE THE PROJECT IN ACCORDANCE WITH THE PLANS AND SPECIFICATIONS. ANY AND ALL EXPENSES INCURRED FOR THIS WORK SHALL BE INCLUDED IN THE UNIT PRICE BID FOR OTHER ITEMS. NO ADDITIONAL PAYMENT SHALL BE MADE FOR THIS WORK.
23.

THE CONTRACTOR SHALL HAVE A FOREMAN, OR RESPONSIBLE PARTY, ON SITE AT ALL TIMES WHEN WORK IS BEING PERFORMED. ALL WORKERS ON THE JOB SITE WILL BE COURTEOUS TO THE PUBLIC AT ALL TIMES, AND SHALL REFER ANY QUESTIONS OR CONCERNS TO THE CONTRACTOR'S FOREMAN OR THE COUNTY INSPECTOR. THE FOREMAN SHALL SPEAK AND UNDERSTAND ENGLISH AND SHALL BE AVAILABLE AT ALL TIMES FOR TIMELY RESOLUTION OF PROJECT-RELATED ISSUES.

24.

ANY U.S.C. AND G.S. MONUMENT WITHIN LIMITS OF CONSTRUCTION IS TO BE PROTECTED. IF IN DANGER OF DAMAGE, THE CONTRACTOR SHOULD NOTIFY:

DIRECTOR, CHARTING AND GEODETIC SERVICES
6001 EXECUTIVE BLVD
ATTN C172
ROCKVILLE, MARYLAND 20852
PHONE: (301) 443-8319
25.

AT LEAST 21 DAYS PRIOR TO THE COMMENCEMENT OF ANY DEWATERING ACTIVITY, THE CONTRACTOR SHALL SUBMIT A DEWATERING PLAN TO THE ENGINEER AND TO THE SOUTHWEST FLORIDA WATER MANAGEMENT DISTRICT. THE DEWATERING PLAN SHALL INCLUDE DESCRIPTIONS AND GRAPHICS AS NEED TO IDENTIFY THE LOCATION OF THE DEWATERING SITES AND THE SEDIMENT SUMP, EXPECTED DURATION OF THE DEWATERING PERIOD, METHODS TO RETAIN OR DETAIN DISCHARGE, METHODS OF ISOLATING THE DEWATERING AREAS, FLOW PATH AND POINTS OF DISCHARGE OF THE WATER. THIS PLAN SHALL INCLUDE DESIGN COMPUTATIONS, LAYOUT, TYPE, AND SPACING OF DEWATERING DEVICES, NUMBER AND SIZE OF PUMPS AND OTHER EQUIPMENT, WITH A DESCRIPTION OF THE INSTALLATION AND OPERATING PROCEDURES. WELLPOINT PUMP DISCHARGE SHALL BE CONTROLLED TO PREVENT EROSION, UNDERMINING, AND ALL OTHER DAMAGE, AND BE PIPED TO APPROVED LOCATIONS.
26.

THE CONTRACTOR SHALL CONTACT ROBERT BROWN AT THE COUNTY'S NATURAL RESOURCES DIVISION AT (941) 742-5980, EXT. 1870 PRIOR TO ANY WORK THAT MAY IMPACT WETLANDS OR SURFACE WATERS OUTSIDE THE LIMITS OF CONSTRUCTION SHOWN BY THE PLANS.
27.

IT IS THE CONTRACTOR'S RESPONSIBILITY TO COMPLY WITH ALL PROJECT RELATED PERMITS. REFER TO STORM WATER POLLUTION PREVENTION PLAN SHEETS AND CONTRACT DOCUMENTS FOR MORE DETAILS.
28.

RECORD DRAWINGS SHALL BE PREPARED BY THE CONTRACTOR. PAYMENT FOR RECORD DRAWINGS WILL BE INCLUDED IN PAY ITEM 101-1, MOBILIZATION.
29.



SURVEY PREPARED BY:

HYATT SURVEY SERVICES
11007 8TH AVENUE EAST
BRADENTON, FL 34212
PHONE #: (941) 748-4693
LICENSED BUSINESS NO. 7203

SIGNED AND SEALED BY RUSSELL P. HYATT, P.S.M. NO. 55303
30.

DESCRIPTION OF SURVEY: TOPOGRAPHIC/BATHYMETRIC SURVEY OF THE CHANNEL LYING BENEATH THE SNEAD ISLAND BRIDGE (10TH STREET WEST) LOCATED IN PALMETTO, FL. ALL SURVEY DATA WAS COLLECTED IN ACCORDANCE WITH THE TECHNICAL REQUIREMENTS AS PROVIDED BY THE GOVERNMENT OF MANATEE COUNTY. THE FIELDWORK FOR THIS SURVEY WAS CONDUCTED FROM JUNE 11 THROUGH JUNE 14, 2010. THE DATA WAS ANALYZED AND PROCESSED ON JUNE 16, 2010
31.

THE SCOPE OF WORK FOR THE SURVEY REQUIRED THAT THE HORIZONTAL DATUM BE THE NORTH AMERICAN DATUM (NAD) OF 1983/1990 OR 2007 ADJUSTMENT, STATE PLANE COORDINATES, FLORIDA WEST ZONE. THE VERTICAL DATUM REQUIRED IS THE NATIONAL GEODETIC VERTICAL DATUM (NGVD) OF 1929.

				MANATEE COUNTY	SCOUR REMEDIATION PROJECT	<div><div><div><div></div><div>380 Park Place Blvd., Suite 300, Clearwater, Florida, 33759</div><div>www.cardnotbe.com - 727.531.3505</div><div>Certificate of Authorization No. 3843</div></div></div><div><div><div><div></div><div>JAMES R. BERNARD, P.E.</div><div>DATE</div><div>APPROVED</div><div>PROFESSIONAL ENGINEER</div></div></div></div></div>	GENERAL NOTES	PROJECT NO:
								00193008.22
								DATE:
								6-30-2014
								SHEET NO:
								3

A. CONSTRUCTION NOTES

CONSTRUCTION SPECIFICATIONS

FLORIDA DEPARTMENT OF TRANSPORTATION (FDOT) STANDARD SPECIFICATIONS FOR ROAD AND BRIDGE CONSTRUCTION, 2014 AND SUPPLEMENTS THERETO.

CAUTION

EXTREME CAUTION SHALL BE EXERCISED TO AVOID DAMAGING THE EXISTING STRUCTURES THAT WILL REMAIN IN PLACE. ANY DAMAGE INCURRED DURING CONSTRUCTION SHALL BE REPAIRED AT NO ADDITIONAL COST TO THE COUNTY. DEBRIS SHALL BE REMOVED FROM THE SITE AND CHANNEL BOTTOM. DEBRIS SHALL BE HAULED AWAY FROM THE SITE AND DISPOSED OF LEGALLY.

TURBIDITY SCREENS

THE CONTRACTOR SHALL COMPLY WITH ALL GOVERNMENT REGULATIONS FOR CONTROL OF TURBIDITY AS PRESCRIBED BY THOSE LOCAL, STATE, AND FEDERAL ENVIRONMENTAL CONTROL AGENCIES HAVING JURISDICTION.

EXISTING CONDITIONS

DETERMINATION OF ALL EXISTING CONDITIONS AT THE SITE SHALL BE THE CONTRACTOR'S RESPONSIBILITY. THE CONTRACTOR SHALL VISIT THE SITE TO VIEW ITS CHARACTERISTICS.

B. BID ITEM NOTES

1. NO SEPARATE PAYMENT SHALL BE MADE FOR RESTORATION OF DISTURBED AREAS. COST SHOULD BE INCLUDED IN PAY ITEM 530-78.

C. SCOUR COUNTERMEASURES

1. THE SCOUR COUNTERMEASURE SHALL BE EITHER A 6" ARTICULATING CONCRETE BLOCK (ACB) SYSTEM OR A 6" ARTICULATING BLOCK MAT (ABM) SYSTEM.
2. THE SCOUR COUNTERMEASURES SHOWN BY THESE PLANS ARE BASED ON THE SCOUR EVALUATION REPORT - PHASE 4 PLAN OF ACTION PREPARED BY AYRES ASSOCIATES FOR THE FLORIDA DEPARTMENT OF TRANSPORTATION, DATED 3/22/2006. HYDRAULIC STABILITY DESIGN CALCULATIONS, SIGNED AND SEALED BY A FLORIDA LICENSED PROFESSIONAL ENGINEER, SHALL BE PREPARED FOR THE VENDOR SPECIFIC COUNTERMEASURE PROPOSED FOR INSTALLATION BY CONTRACTOR. THESE CALCULATIONS SHALL BE SUBMITTED TO THE COUNTY FOR REVIEW AND APPROVAL AT THE TIME OF SHOP DRAWING SUBMITTAL. THE CALCULATIONS SHALL CONFORM TO THE GUIDELINES OF HYDRAULIC ENGINEERING CIRCULAR NO. 23 (HEC-23). THE COUNTY WILL FURNISH AVAILABLE PHASE 1 THRU PHASE 4 SCOUR EVALUATION REPORTS FOR BASIS OF DESIGN.
3. PREPARE CHANNEL BOTTOM, FURNISH AND INSTALL SCOUR COUNTERMEASURE IN ACCORDANCE WITH THE TECHNICAL SPECIAL PROVISIONS AND THE LINES, GRADES, DIMENSIONS AND NOTES IN THESE PLANS.
4. IF OPTIONAL SCOUR COUNTERMEASURE TYPES ARE INCLUDED IN THE BID FORM, THE COUNTY MAY SELECT THE LOW BIDDER BASED ON THE TYPE OF SCOUR COUNTERMEASURE PREFERRED BY COUNTY.
5. THE CONTRACTOR SHALL USE EXTREME CAUTION WHEN OPERATING EQUIPMENT AND PLACING THE SCOUR COUNTERMEASURE AROUND THE EXISTING PILES TO AVOID DAMAGE TO THE BRIDGE.

D. MANATEE AND SEA TURTLE CONSTRUCTION CONDITIONS

THE CONTRACTOR SHALL COMPLY WITH THE FOLLOWING PROTECTED SPECIES CONSTRUCTION CONDITIONS:

A. THE CONTRACTOR SHALL INSTRUCT ALL PERSONNEL ASSOCIATED WITH THE PROJECT OF THE POTENTIAL PRESENCE OF THESE SPECIES AND THE NEED TO AVOID COLLISIONS WITH MANATEES OR SEA TURTLES. ALL CONSTRUCTION PERSONNEL ARE RESPONSIBLE FOR OBSERVING WATER-RELATED ACTIVITIES FOR THE PRESENCE OF THESE SPECIES.

B. THE CONTRACTOR SHALL ADVISE ALL CONSTRUCTION PERSONNEL THAT THERE ARE CIVIL AND CRIMINAL PENALTIES FOR HARMING, HARASSING, OR KILLING MANATEES OR SEA TURTLES, WHICH ARE PROTECTED UNDER THE MARINE MAMMALS PROTECTION ACT OF 1972 AND THE ENDANGERED SPECIES ACT OF 1973.

C. ALL VESSELS ASSOCIATED WITH THE CONSTRUCTION PROJECT SHALL OPERATE AT "NO WAKE/IDLE" SPEEDS AT ALL TIMES WHILE IN THE CONSTRUCTION AREA AND WHILE IN WATER DEPTHS WHERE THE DRAFT OF THE VESSEL PROVIDES LESS THAN A FOUR-FOOT CLEARANCE FROM THE BOTTOM. ALL VESSELS WILL PREFERENTIALLY FOLLOW DEEP-WATER ROUTES (E.G., MARKED CHANNELS) WHENEVER POSSIBLE.

D. IF A MANATEE OR SEA TURTLE IS SEEN WITHIN 100 YARDS OF THE ACTIVE DAILY CONSTRUCTION OPERATION OR VESSEL MOVEMENT, ALL APPROPRIATE PRECAUTIONS SHALL BE IMPLEMENTED TO ENSURE ITS PROTECTION. THESE PRECAUTIONS SHALL INCLUDE CESSATION OF OPERATION OF ANY MOVING EQUIPMENT CLOSER THAN 50 FEET OF A MANATEE OR SEA TURTLE. OPERATION OF ANY MECHANICAL CONSTRUCTION EQUIPMENT SHALL CEASE IMMEDIATELY IF A MANATEES OR SEA TURTLE IS SEEN WITHIN A 50 FEET RADIUS OF THE EQUIPMENT. ACTIVITIES MAY NOT RESUME UNTIL THE PROTECTED SPECIES HAS DEPARTED THE PROJECT AREA OF ITS OWN VOLITION.

E. ANY COLLISION WITH AND/OR INJURY TO A SEA TURTLE SHALL BE REPORTED IMMEDIATELY TO THE NATIONAL MARINE FISHERIES SERVICE'S PROTECTED RESOURCES DIVISION (727-824-5312).

F. A COLLISION WITH AND/OR INJURY TO A MANATEE SHALL BE IMMEDIATELY REPORTED TO THE FLORIDA MARINE PATROL AT 1-239-332-6926 AND THE U.S. FISH AND WILDLIFE SERVICE AT 1-850-488-4676.

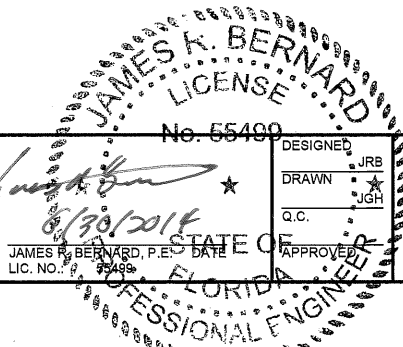
G. PRIOR TO THE COMMENCEMENT OF CONSTRUCTION, THE CONTRACTOR SHALL CONSTRUCT AND INSTALL AT LEAST TWO TEMPORARY SIGNS CONCERNING MANATEES. ONE SIGN, FOR ALL VESSELS, WITH A SIZE OF AT LEAST 8.5" X 11", SHALL READ "CAUTION: MANATEE HABITAT. IDLE SPEED IS REQUIRED IF OPERATING A VESSEL IN THE CONSTRUCTION AREA". A SECOND TEMPORARY SIGN, AT LEAST 8.5" X 11", SHALL READ "CAUTION: MANATEE HABITAT. EQUIPMENT MUST BE SHUTDOWN IMMEDIATELY IF A MANATEE COMES WITHIN 50 FEET OF OPERATION."

H. DOUBLE ROWS OF TURBIDITY CURTAINS WILL BE INSTALLED AROUND THE POINT OF THE TURBIDITY GENERATION AND WILL DEFINE THE EDGE OF THE MIXING ZONE. THE MIXING ZONE WILL BE CONFINED TO A SPECIFIC WORK AREA AND WILL MOVE ALONG THE LENGTH OF THE BRIDGE WITH THE PROGRESS OF THE CONSTRUCTION. THIS WILL REDUCE THE AREA NEEDED FOR A MIXING ZONE AND REDUCE THE POTENTIAL FOR IMPACTS TO WILDLIFE SUCH AS THE MANATEE.

MANATEE COUNTY

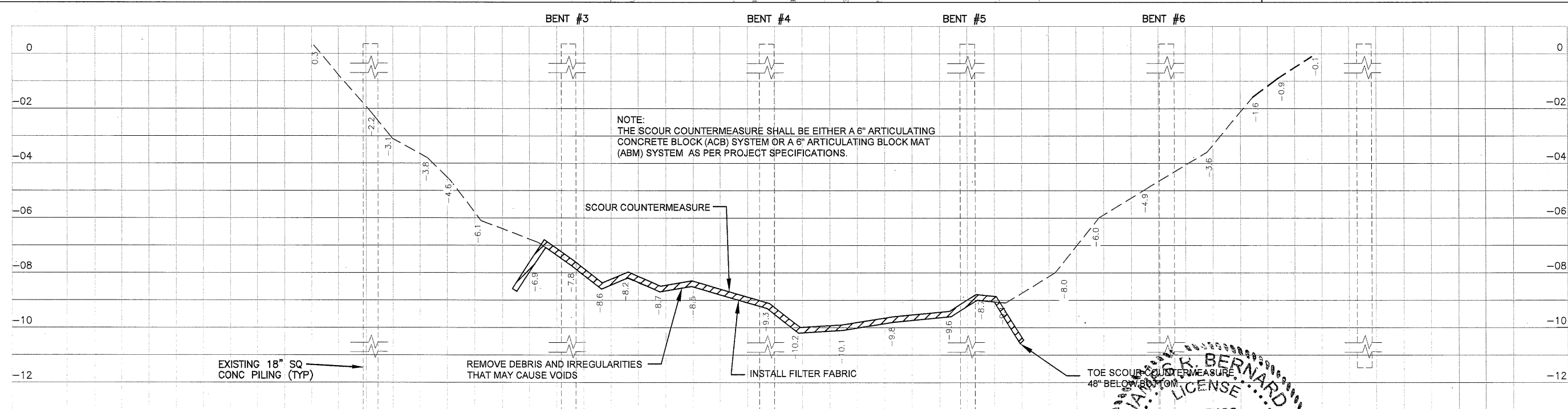
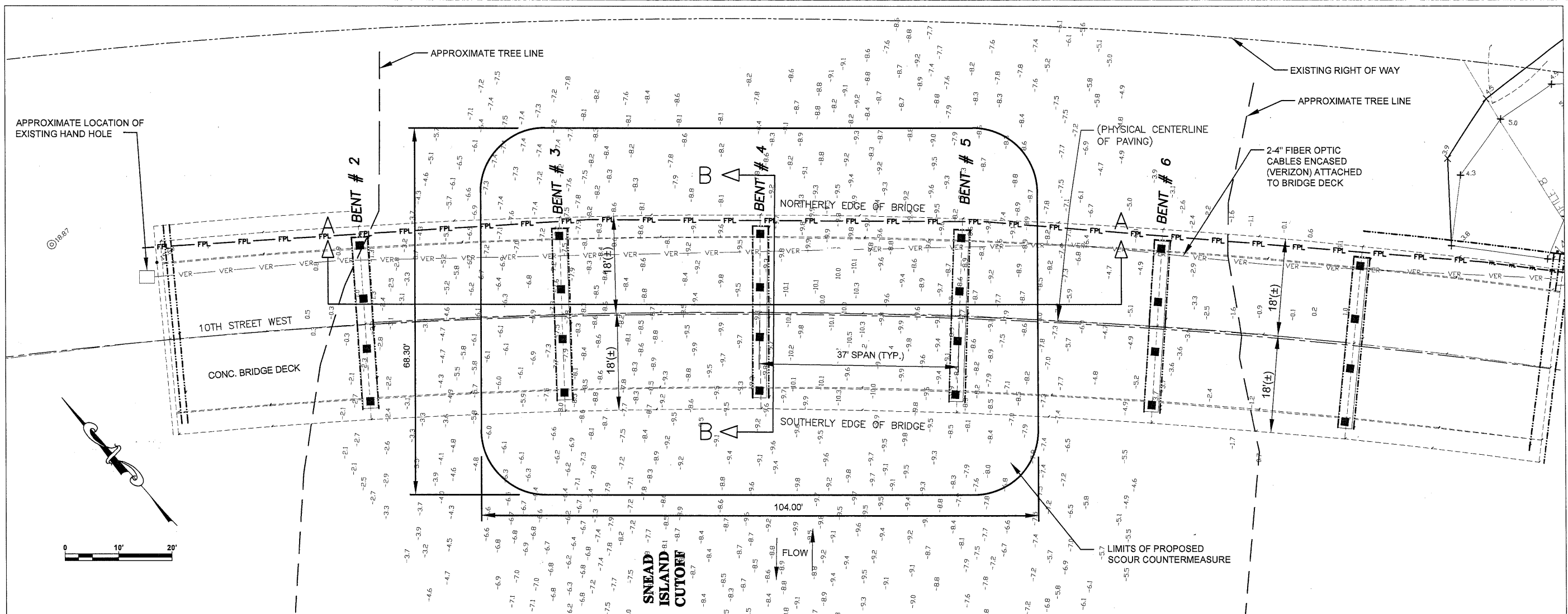
SCOUR REMEDIATION
PROJECT

**Cardno**
TBE
380 Park Place Blvd., Suite 300, Clearwater, Florida, 33759
www.cardnotbe.com - 727.531.3505
Certificate of Authorization No. 3843



CONSTRUCTION NOTES

PROJECT NO:
00193008.22
DATE:
6-30-2014
SHEET NO:
4



NO.	DESCRIPTION	BY	DATE

MANATEE COUNTY

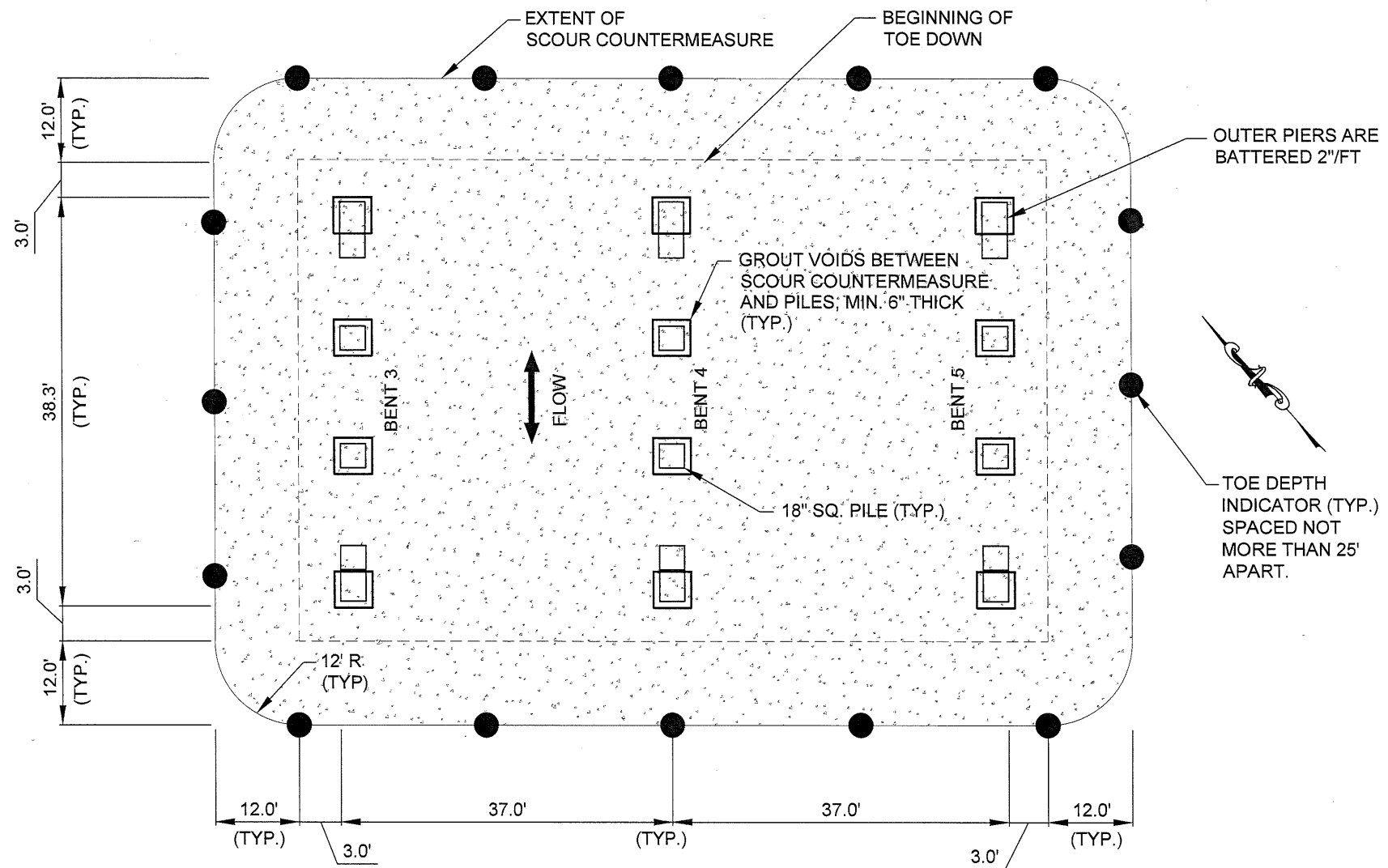
SCOUR REMEDIATION
PROJECT

Cardno
TBE
380 Park Place Blvd., Suite 300, Clearwater, Florida, 33759
www.cardnote.com - 727.531.3505
Certificate of Authorization No. 3843

JAMES R. BERNARD
No. 55499
DESIGNED: JRB
DRAWN: JCH
DATE: 6/30/2014
APPROVED: JRB
LICENSE: 55499
FLORIDA PROFESSIONAL ENGINEER

PLAN AND ELEVATION

PROJECT NO:	00193008.22
DATE:	6-30-2014
SHEET NO:	5



BRIDGE 130007 PLAN VIEW
LOOKING DOWN THROUGH BRIDGE DECK
(NTS)

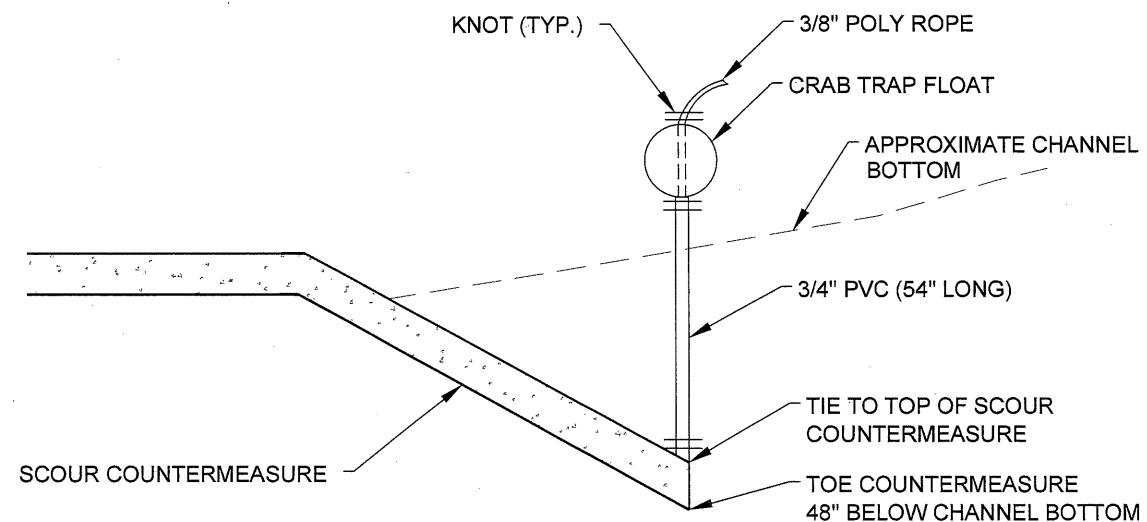
SCOUR COUNTERMEASURE
WITH FILTER FABRIC

NOTE:

THE SCOUR COUNTERMEASURE SHALL BE EITHER A 6" ARTICULATING CONCRETE BLOCK (ACB) SYSTEM OR A 6" ARTICULATING BLOCK MAT (ABM) SYSTEM AS PER PROJECT SPECIFICATIONS.

NOTES:

1. SEE SCOUR COUNTERMEASURE BRIDGE ELEVATION AND SECTION FOR ADDITIONAL INFORMATION.
2. FILTER FABRIC SHALL BE FDOT STANDARD INDEX 199 TYPE D-2 AND SHALL MEET THE REQUIREMENTS OF SECTION 514 OF THE STANDARD SPECIFICATIONS.



TOE DEPTH INDICATOR DETAIL

MANATEE COUNTY

**SCOUR REMEDIATION
PROJECT**

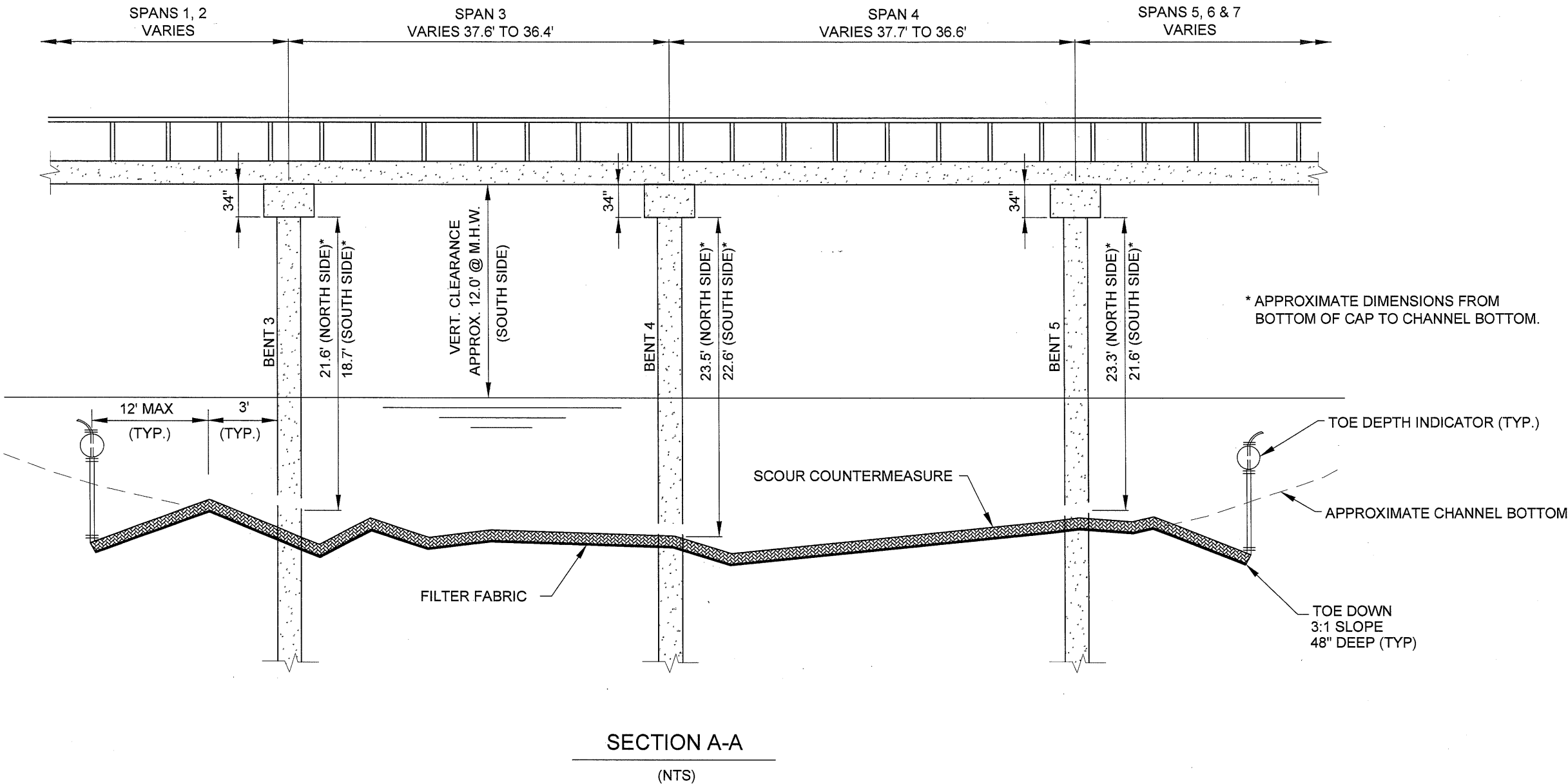
**Cardno
TBE**
380 Park Place Blvd., Suite 300, Clearwater, Florida, 33759
www.cardnotbe.com - 727.531.3505
Certificate of Authorization No. 3843

JAMES R. BERNARD
No. 55499
DESIGNED: JRB
DRAWN: JRB
CHECKED: JRB
APPROVED: JRB
DATE: 6/30/2014
FLORIDA
PROFESSIONAL ENGINEER

**SCOUR COUNTERMEASURE
BRIDGE PLAN**

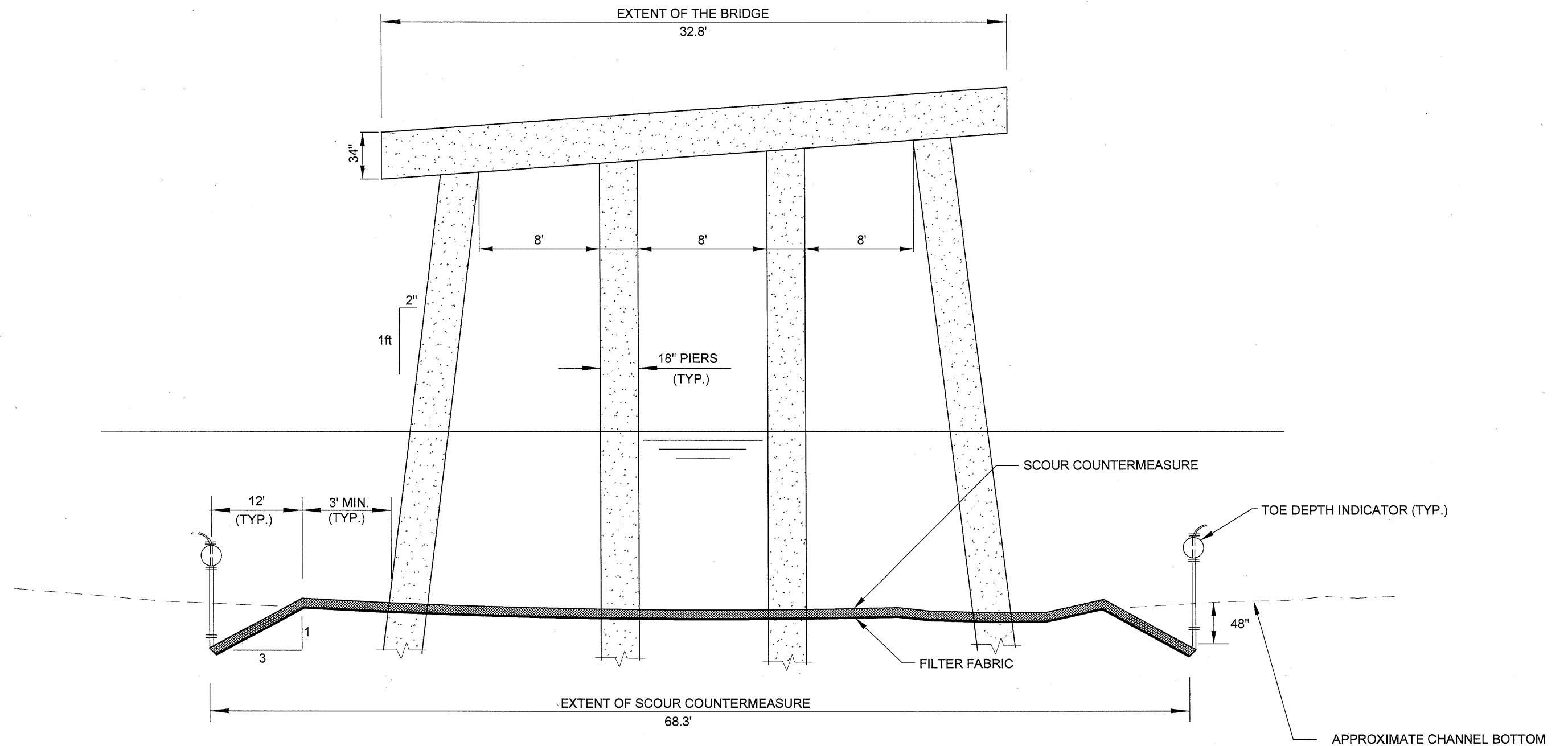
PROJECT NO:
00193008.22
DATE:
6-30-2014
SHEET NO:
6

SCOUR COUNTERMEASURE INSTALLATION
ARMORING AT BENTS 3, 4 AND 5



NOTE:
THE SCOUR COUNTERMEASURE SHALL BE EITHER A 6" ARTICULATING CONCRETE BLOCK (ACB) SYSTEM OR A 6" ARTICULATING BLOCK MAT (ABM) SYSTEM AS PER PROJECT SPECIFICATIONS.

MANATEE COUNTY				SCOUR REMEDIATION PROJECT				SCOUR COUNTERMEASURE BRIDGE ELEVATION			
NO.				DESCRIPTION				BY			
DATE											
PROJECT NO:				00193008.22				DATE:			
6-30-2014				SHEET NO:				7			



SECTION B-B

(NTS)

NOTES:

1. THE SCOUR COUNTERMEASURE SHALL BE EITHER A 6" ARTICULATING CONCRETE BLOCK (ACB) SYSTEM OR A 6" ARTICULATING BLOCK MAT (ABM) SYSTEM AS PER PROJECT SPECIFICATIONS.
2. BRIDGE SUPERSTRUCTURE AND O.H. UTILITIES ARE NOT SHOWN.

MANATEE COUNTY

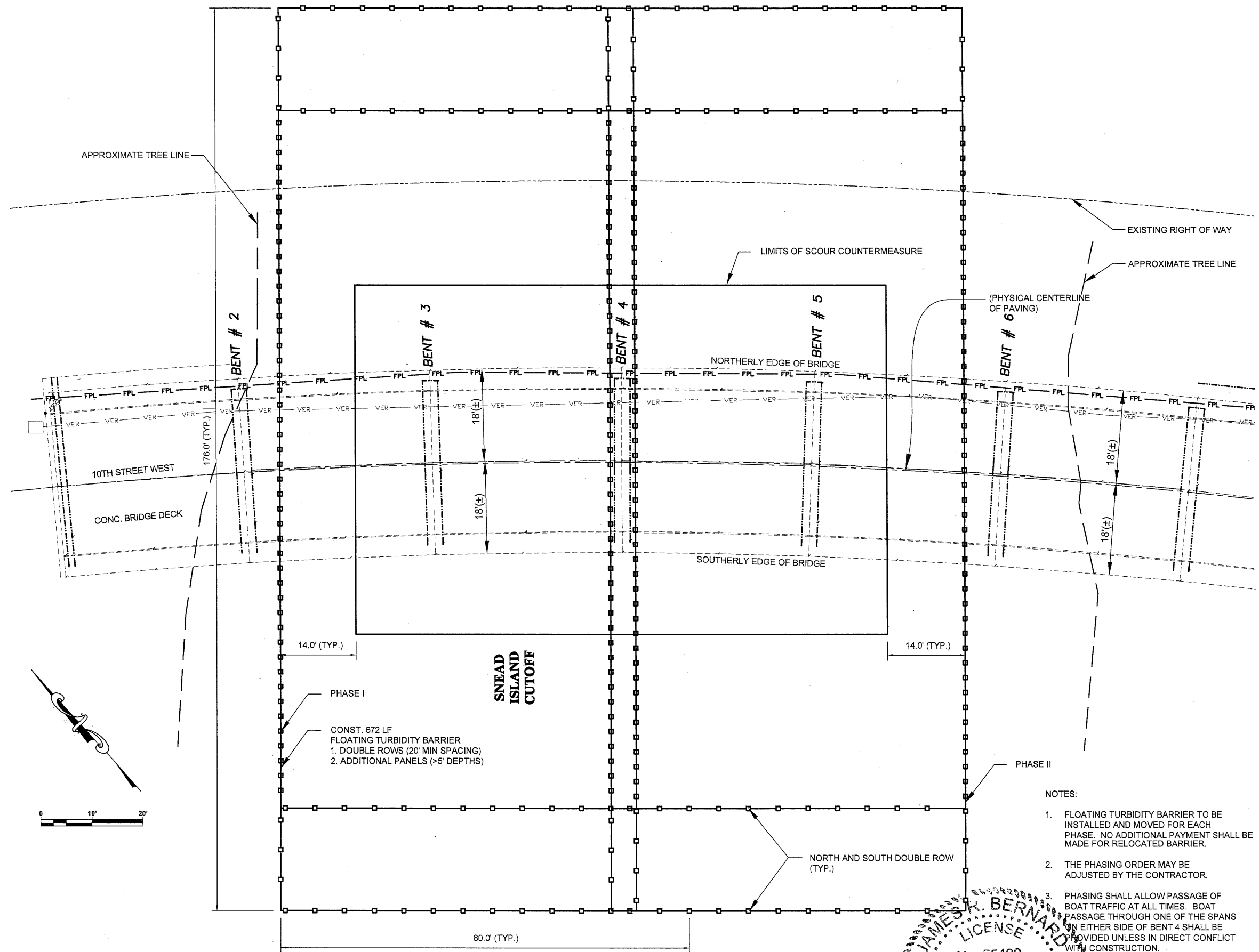
SCOUR REMEDIATION
PROJECT

Cardno
TBE
380 Park Place Blvd., Suite 300, Clearwater, Florida, 33759
www.cardnotbe.com - 727.531.3505
Certificate of Authorization No. 3843

JAMES R. BERNARD
LICENSE
No. 55499
DESIGNED
DRAWN
APPROVED
STATE OF FLORIDA
PROFESSIONAL ENGINEER

SCOUR COUNTERMEASURE
BRIDGE SECTION

PROJECT NO:
00193008.22
DATE:
6-30-2014
SHEET NO:
8



NO.	DESCRIPTION	BY	DATE

MANATEE COUNTY

SCOUR REMEDIATION PROJECT

Cardno
TBE
380 Park Place Blvd., Suite 300, Clearwater, Florida, 33759
www.cardnotbe.com - 727.531.3505
Certificate of Authorization No. 3843

JAMES R. BERNARD
LICENSE
No. 55499
6/30/2014
STATE OF FLORIDA
PROFESSIONAL ENGINEER

DESIGNED: JAB
DRAWN: JGH
CHECKED: J.C.
APPROVED: J.C.

EROSION CONTROL PLAN

PROJECT NO:
00193008.22
DATE:
6-30-2014
SHEET NO:
9

I. SITE DESCRIPTION

A. CONSTRUCTION ACTIVITY

PRIMARY CONSTRUCTION ACTIVITIES INCLUDE INSTALLATION OF SCOUR COUNTERMEASURES AT THREE PIERS.

PROJECT LIMITS:

THE PROJECT LIMITS INCLUDE BENTS 3-5 OF THE BRIDGE. APPROXIMATELY 30' WEST OF BENT 3 TO 30' EAST OF BENT 5. APPROXIMATELY 60' NORTH AND SOUTH OF EACH SIDE OF BRIDGE.

PROJECT DESCRIPTION:

THE PURPOSES OF THIS PROJECT IS TO MAINTAIN THE BRIDGE AND PROTECT IT AGAINST SCOUR.

B. MAJOR SOIL DISTURBING ACTIVITIES:

INSTALLATION OF SCOUR COUNTERMEASURES AND ABUTMENT RUBBLE RIPRAP ARE LIKELY TO DISTURB FINE BOTTOM SEDIMENTS.

C. TOTAL PROJECT AREA:

0.41 ACRES (INCLUDES LIMITS OF TURBIDITY BARRIER).

TOTAL AREA TO BE DISTURBED:

0.16 ACRES (INCLUDES SCOUR COUNTERMEASURE AND TOE IN AREA).

D. RUNOFF DATA

N/A

SOIL DATA

PREDOMINATELY LOOSE TO MEDIUM DENSE FINE SAND FOLLOWED BY A MEDIUM DENSE TO DENSE CALCAREOUS CLAYEY SAND LAYER.

E. DRAINAGE AREA

N/A

F. RECEIVING WATERS

SNEAD ISLAND CUTOFF/MANATEE RIVER/TERRA CEIA BAY.

G. WETLANDS AREAS

THERE ARE MANGROVES ADJACENT TO THE PROJECT LIMITS. THESE, OR SOILS WITHIN THE LIMITS OF THEIR CANOPY, SHALL NOT BE DISTURBED.

II. CONTROLS

A. SEQUENCE OF MAJOR ACTIVITIES

1. INSTALL AND TURBIDITY BARRIER AS SHOWN ON THE EROSION CONTROL PLAN AND CONSTRUCTION DRAWING PRIOR TO START OF CONSTRUCTION ACTIVITIES.
2. WHEN CONSTRUCTION ACTIVITY IS COMPLETE AND THE SITE IS STABILIZED, REMOVE EROSION PROTECTION DEVICES AND CONSTRUCTION ENTRANCE AS REQUIRED.

B. EROSION AND SEDIMENT (E & S) CONTROLS CONSTRUCTION ACTIVITIES

PRIOR TO THE PLACEMENT OF THE SCOUR COUNTERMEASURE, THE CONTRACTOR SHALL REVIEW THE SITE SPECIFIC EROSION CONTROL PLAN. THE CONTRACTOR SHALL PROVIDE FLOATING TURBIDITY BARRIERS SPECIFIED IN THE PLANS AND ACCORDING TO STATE OF FLORIDA EROSION AND SEDIMENT CONTROL DESIGNER AND REVIEWER MANUAL (JUNE 2007). THE CONSTRUCTION AND PLACEMENT OF TURBIDITY BARRIER SHALL BE PHASED TO AVOID BLOCKING OF THE NAVIGATION CHANNEL. THE CONTRACTOR MAY ALSO BE REQUIRED TO MODIFY THE PLAN OR MATERIALS TO ADAPT TO SEASONAL VARIATIONS OR SITE CONDITIONS. CONTRACTOR WILL COMPLY WITH E&S PLAN. ANY MODIFICATIONS TO THIS PLAN MUST BE SIGNED BY A PROFESSIONAL ENGINEER REPRESENTING THE CONTRACTOR. CONTRACTOR SHALL REMOVE ALL SEDIMENT THAT HAS MIGRATED OFF-SITE. THE CONSTRUCTION ENGINEER IS RESPONSIBLE FOR DETERMINING IF ADDITIONAL CONTROLS ARE NEEDED AND DEPLOYMENT SCHEDULES FOR THE IMPLEMENTATION OF ALL EROSION CONTROL DEVICES.

C. STABILIZATION PRACTICES:

DURING CONSTRUCTION THE CONTRACTOR WILL PROVIDE STABILIZATION FOR AREAS WHICH HAVE BEEN CLEARED AND NOT REWORKED WITHIN FOURTEEN (14) CALENDAR DAYS. THE CONTRACTOR MAY UTILIZE TEMPORARY SEEDING OR TEMPORARY SODDING IN ACCORDANCE WITH SECTION 570 OF THE "FDOT STANDARD SPECIFICATIONS FOR ROAD AND BRIDGE CONSTRUCTION" 2010.

- _____ TEMPORARY SODDING OR SEEDING
- _____ PERMANENT SODDING OR SEEDING
- _____ BUFFER ZONES
- ☒ PRESERVATION OF NATURAL RESOURCES

D. STRUCTURAL PRACTICES:

- _____ SAND BAGGING
- _____ SILT FENCES
- _____ HAY BALES
- _____ BERMS
- _____ DIVERSION, INTERCEPTOR, OR PERIMETER DITCHES
- _____ PIPE SLOPE DRAINS
- _____ FLUMES
- _____ ROCK BEDDING AT CONSTRUCTION EXIT
- _____ TIMBER BEDDING AT CONSTRUCTION EXIT
- _____ DITCH LINER
- _____ SEDIMENT TRAPS
- _____ SEDIMENT BASINS
- _____ STORM INLET SEDIMENT TRAP
- _____ STONE OUTLET STRUCTURES
- _____ CURBS AND GUTTERS
- _____ STORM SEWERS
- _____ VELOCITY CONTROL DEVICES
- ☒ TURBIDITY BARRIER
- ☒ RIP RAP (SCOUR COUNTERMEASURE)
- _____ "GEO-HAY" OR EQUIVALENT SYNTHETIC INLET PROTECTION

E. DESCRIPTION OF STORM WATER MANAGEMENT:

NO STORM WATER MANAGEMENT FEATURES ARE INCLUDED.

F. WASTE DISPOSAL:

THE CONTRACTOR SHALL PROVIDE LITTER CONTROL AND COLLECTION WITHIN THE PROJECT BOUNDARIES DURING CONSTRUCTION ACTIVITIES. ANY CHEMICAL CONTAINERS SHALL BE DISPOSED OF BY THE CONTRACTOR ACCORDING TO EPA'S STANDARD PRACTICES AS DETAILED BY THE MANUFACTURER. NO SOLID MATERIALS INCLUDING BUILDING AND CONSTRUCTION MATERIALS SHALL BE DISCHARGED TO WETLANDS OR BURIED ON SITE. ALL WASTE MATERIAL WILL BE COLLECTED AND STORED IN DUMPSTERS PER LOCAL SOLID WASTE REGULATIONS. ALL TRASH AND CONSTRUCTION DEBRIS FROM THE SITE WILL BE DEPOSITED IN THE DUMPSTER. THE DUMPSTER WILL BE EMPTIED A MINIMUM OF TWICE A WEEK OR MORE OFTEN IF NECESSARY, AND THE TRASH WILL BE HAULED TO THE APPROPRIATE COUNTY FOR DUMPING.

THE CONTRACTOR SHALL PROVIDE A DEBRIS SURVEY TO MAP ALL DEBRIS IN THE VICINITY OF THE SCOUR PROTECTION AREA THAT WILL AFFECT CONSTRUCTION. THE CONTRACTOR SHALL SUBMIT THE DEBRIS SURVEY WITH A DEBRIS REMOVAL PLAN TO THE ENGINEER FOR APPROVAL BEFORE CONSTRUCTION BEGINS. REMOVE ALL DEBRIS (IF ENCOUNTERED) IN THE DEBRIS SURVEY FROM THE BOTTOM OF THE WATER BODY WITHIN THE LIMITS OF THE SCOUR COUNTERMEASURE INSTALLATION AND AS DIRECTED BY THE ENGINEER. THE DEBRIS SHALL BE DISPOSED OF OFF SITE IN AREAS PROVIDED BY THE CONTRACTOR IN A MANNER SATISFACTORY TO THE ENGINEER. DEBRIS THAT MAY REQUIRE REMOVAL INCLUDE BUT ARE NOT LIMITED TO BURIED OR PARTIALLY BURIED CRAB TRAPS, METAL, PILING, CONCRETE, SIGNS, SIGN POSTS, PILE JACKETS, TREES AND OTHER MISCELLANEOUS DEBRIS. THE CONTRACTOR SHALL CERTIFY THAT ALL AREAS HAVE BEEN CLEARED OF DEBRIS BEFORE BEGINNING CONSTRUCTION OF THE SCOUR PROTECTION, AS APPROVED BY THE ENGINEER. THE CERTIFICATION SHALL BE IN A NOTARIZED LETTER ON THE CONTRACTOR'S LETTERHEAD. THE COST OF DEBRIS SURVEY SHALL BE INCLUDED IN THE BID PRICE FOR MOBILIZATION.

G. OFFSITE VEHICLE TRACKING:

IF CONTRACTORS ACTIVITIES ARE PRONE TO SEDIMENT TRACKING, OR IF REQUIRED BY PERMITTING AGENCIES, STABILIZED CONSTRUCTION ENTRANCES SHALL BE PROVIDED TO HELP REDUCE VEHICLE TRACKING OF SEDIMENTS. THE PAVED STREETS WILL BE CLEANED AS DIRECTED BY THE CONSTRUCTION INSPECTOR AND ENGINEER TO REMOVE ANY EXCESS MUD, DIRT OR ROCK TRACKED FROM THE SITE. DUMP TRUCKS HAULING MATERIAL FROM OR TO THE SITE WILL BE COVERED WITH A TARPULIN AT ALL TIMES.

H. SANITARY WASTE:

THE CONTRACTOR WILL PROVIDE APPROPRIATE PORTABLE SANITARY DEVICES. THE CONTRACTOR SHALL REMOVE SANITARY WASTE IN ACCORDANCE WITH "FDOT STANDARD SPECIFICATIONS FOR ROAD AND BRIDGE CONSTRUCTION 2010" SECTION 7-6, AND STATE AND LOCAL REGULATIONS.

I. HAZARDOUS WASTE:

ALL HAZARDOUS WASTE MATERIALS, IF ENCOUNTERED, WILL BE DISPOSED OF IN THE MANNER SPECIFIED BY LOCAL OR STATE REGULATIONS. THE CONTRACTOR WILL BE RESPONSIBLE FOR SEEING THESE PRACTICES ARE FOLLOWED.

J. WATER QUALITY MONITORING (MIXING ZONES):

THE STATE WATER QUALITY STANDARD FOR CONSTRUCTION ACTIVITIES PROHIBIT A TURBIDITY INCREASE OF GREATER THAN 29 NTU'S ABOVE AMBIENT CONDITIONS AT THE COMPLIANCE LOCATION OF THE MIXING ZONES.

DUE TO THE FINE GRAIN SIZE OF THE SEDIMENTS WITHIN THE PROJECT AREA AND THE OFW DESIGNATION OF THE WATERBODY, A MIXING ZONE FOR IN WATER CONSTRUCTION IS REQUESTED AS PART OF THIS ERP APPLICATION PURSUANT TO CHAPTER 62-4.244(5), FLORIDA ADMINISTRATIVE CODE (F.A.C.). THE PURPOSE OF THE MIXING ZONE IS TO ALLOW FOR A TEMPORARY EXCEEDANCE IN WATER QUALITY STANDARDS FOR TURBIDITY WITHIN A DEFINED AREA DURING CONSTRUCTION.

DOUBLE ROWS OF TURBIDITY CURTAINS WILL BE INSTALLED AROUND THE POINT OF THE TURBIDITY GENERATION AND WILL DEFINE THE EDGE OF THE MIXING ZONE. THE MIXING ZONE WILL BE CONFINED TO A SPECIFIC WORK AREA AND WILL MOVE ALONG THE LENGTH OF THE BRIDGE WITH THE PROGRESS OF THE CONSTRUCTION. THIS WILL REDUCE THE AREA NEEDED FOR A MIXING ZONE AND REDUCE THE POTENTIAL FOR IMPACTS TO WILDLIFE SUCH AS THE MANATEE. IN NO CASE WILL THE MIXING ZONE EXCEED A 500 FEET RADIUS AROUND THE WORK ZONE.

TURBIDITY MONITORING AND REPORTING WILL BE CONDUCTED IN ACCRDANCE WITH THE FOLLOWING PROCEDURES:

FREQUENCY: EVERY FOUR HOURS DURING CONSTRUCTION

SAMPLING DEPTHS: ALL STATIONS SHALL BE SAMPLED AT 2 FEET ABOVE THE BOTTOM, MID-DEPTH AND AT THE SURFACE OR AS DIRECTED BY PERMITTING AGENCIES. IF WATER LESS THAN 3 FEET DEEP, ONLY MID DEPTH SAMPLES ARE REQUIRED.

BACKGROUND SAMPLING LOCATION: APPROXIMATELY 100 FEET UP-CURRENT OF THE EDGE OF THE MIXING ZONE.

COMPLIANCE SAMPLING LOCATION: IMMEDIATELY DOWN-CURRENT OF THE EDGE OF THE MIXING ZONE WITHIN ANY VISIBLE PLUME OR AS DIRECTED BY PERMITTING AGENCIES.

METHOD: ALL SAMPLES SHALL BE COLLECTED WITH A KEMMERER, VAN DORN, OR SIMILAR SAMPLER WHICH IS DESIGNED TO COLLECT IN SITU WATER SAMPLES.


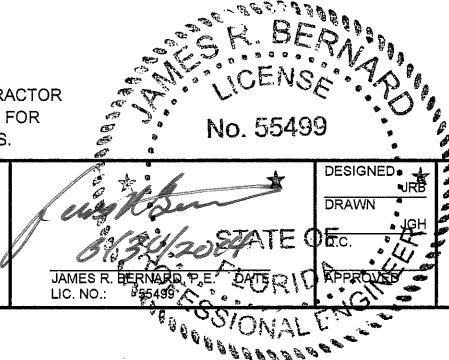
REPORTING: ALL MONITORING DATA SHALL BE SUBMITTED WITHIN ONE WEEK OF ANALYSIS WITH DOCUMENTS CONTAINING THE FOLLOWING INFORMATION:

1. PERMIT NUMBER
2. DATES OF SAMPLING AND ANALYSIS
3. LOCATION OF SAMPLE (I.E., STATION AND WATER COLUMN LOCATION)
4. A STATEMENT DESCRIBING THE METHODS USED IN COLLECTION, HANDLING, STORAGE, AND ANALYSIS OF THE SAMPLES
5. A MAP INDICATING THE SAMPLING LOCATIONS
6. A STATEMENT BY THE INDIVIDUAL RESPONSIBLE FOR IMPLEMENTATION OF THE SAMPLING PROGRAM CONCERNING THE AUTHENTICITY, PRECISION, LIMITS OF DETECTION AND ACCURACY OF DATA.

MONITORING REPORTS SHALL INCLUDE INFORMATION ON THE GENERAL ANTECEDENT WEATHER CONDITIONS.

IF MONITORING REVEALS VIOLATIONS OF THE STATE WATER QUALITY STANDARD FOR TURBIDITY, CONSTRUCTION ACTIVITIES SHALL CEASE IMMEDIATELY AND NOT RESUME UNTIL CORRECTIVE MEASURES HAVE BEEN TAKEN AND TURBIDITY HAS RETURNED TO ACCEPTABLE LEVELS. ANY SUCH OCCURRENCE SHALL ALSO BE IMMEDIATELY REPORTED TO THE REGULATORY AGENCIES.

IN THE EVENT THAT STATE WATER QUALITY STANDARDS ARE EXCEEDED, THE CONTRACTOR SHALL IMPLEMENT A CONTINGENCY PLAN WHICH COMPLIES WITH THE PROJECT SFWMD/FDEP ERP AND NPDES REQUIREMENTS AT NO ADDITIONAL COST.

				MANATEE COUNTY		SCOUR REMEDIATION PROJECT		 380 Park Place Blvd., Suite 300, Clearwater, Florida, 33759 www.cardnotbe.com - 727.531.3505 Certificate of Authorization No. 3843		 DESIGNED: JRB DRAWN: JRB STATE OF FLORIDA JAMES R. BERNARD, P.E. LIC. NO.: 55499		STORM WATER POLLUTION PREVENTION PLAN (1)		PROJECT NO: 00193008.22 DATE: 6-30-2014 SHEET NO: 10	
NO.	DESCRIPTION	BY	DATE												

K. APPROVED STATE, LOCAL PLANS, OR STORM WATER PERMITS:

U.S. ARMY CORPS OF ENGINEERS (ACOE) AND THE FLORIDA DEPARTMENT OF ENVIRONMENTAL PROTECTION (FDEP).

THIS PROJECT SHALL MEET ALL CONDITIONS OF ACOE PERMIT # SAJ 2010-01344 (NW-MEP) AND, MORE SPECIFICALLY;

1. WITHIN 60 DAYS OF COMPLETION OF THE WORK AUTHORIZED, A SELF-CERTIFICATION STATEMENT OF COMPLIANCE MUST BE COMPLETED AND SUBMITTED TO THE U.S. ARMY CORPS OF ENGINEERS. MAIL THE COMPLETED FORM TO THE REGULATORY DIVISION, SPECIAL PROJECTS AND ENFORCEMENT BRANCH, 10117 PRINCESS PALM AVENUE, SUITE 120, TAMPA, FLORIDA 33610.
2. THE PERMITTEE UNDERSTANDS AND AGREES THAT, IF FUTURE OPERATIONS BY THE UNITED STATES REQUIRE THE REMOVAL, RELOCATION, OR OTHER ALTERATION, OF THE STRUCTURES OR WORK HEREIN AUTHORIZED, OR IF, IN THE OPINION OF THE SECRETARY OF THE ARMY OR HIS AUTHORIZED REPRESENTATIVE, SAID STRUCTURE OR WORK SHALL CAUSE UNREASONABLE OBSTRUCTION TO FREE NAVIGATION OF THE NAVIGABLE WATERS, THE PERMITTEE WILL BE REQUIRED, UPON DUE NOTICE FROM THE U.S. ARMY CORPS OF ENGINEERS, TO REMOVE, RELOCATE, OR ALTER THE STRUCTURAL WORK OR OBSTRUCTIONS CAUSED THEREBY, WITHOUT EXPENSE TO THE UNITED STATES. NO CLAIM SHALL BE MADE AGAINST THE UNITED STATES ON ACCOUNT OF ANY SUCH REMOVAL OR ALTERATION.
3. NO STRUCTURE OR WORK SHALL ADVERSELY EFFECT OR DISTURB PROPERTIES LISTED IN THE NATIONAL REGISTER OF HISTORIC PLACES OR THOSE ELIGIBLE FOR INCLUSION IN THE NATIONAL REGISTER. PRIOR TO THE START OF WORK, THE PERMITTEE OR OTHER PARTY ON THE PERMITTEE'S BEHALF, SHALL CONDUCT A SEARCH IN THE NATIONAL REGISTER INFORMATION SYSTEM (NRIS). INFORMATION CAN BE FOUND AT: <http://www.cr.nps.gov/nr/research/nris.htm>. INFORMATION ON PROPERTIES ELIGIBLE FOR INCLUSION IN THE NATIONAL REGISTER CAN BE IDENTIFIED BY CONTACTING THE FLORIDA MASTER FILE OFFICE BY EMAIL AT fmsfile@dos.state.fl.us OR BY TELEPHONE AT 850-245-6440.
4. IF UNMARKED HUMAN REMAINS ARE ENCOUNTERED, ALL WORK SHALL STOP IMMEDIATELY, AND THE PROPER AUTHORITIES NOTIFIED IN ACCORDANCE WITH SECTION 872.05, FLORIDA STATUTES, UNLESS ON FEDERAL LANDS. AFTER SUCH NOTIFICATIONS, PROJECT ACTIVITIES ON NON-FEDERAL LANDS SHALL NOT RESUME WITHOUT VERBAL AND/OR WRITTEN AUTHORIZATION FROM THE FLORIDA STATE ARCHAEOLOGIST FOR FINDS UNDER HIS OR HER JURISDICTION.
5. THE PERMITTEE SHALL COMPLY WITH THE "STANDARD MANATEE CONDITIONS FOR IN-WATER WORK-2009".

THIS PROJECT SHALL MEET ALL CONDITIONS OF FDEP PERMIT (NGP) # 41-0299360-001, AND, MORE SPECIFICALLY;

1. PLEASE BE ADVISED THAT THE CONSTRUCTION PHASE OF THE NGP MUST BE COMPLETED WITHIN FIVE YEARS FROM 3/1/10. IF YOU WISH TO CONTINUE THIS NGP BEYOND THE EXPIRATION DATE, YOU MUST NOTIFY THE DEPARTMENT AT LEAST 30 DAYS BEFORE ITS EXPIRATION. ANY ACTIVITIES PERFORMED UNDER A NOTICED GENERAL PERMIT ARE SUBJECT TO GENERAL CONDITIONS REQUIRED IN RULE 62-341.215, F.A.C., AND THE SPECIFIC CONDITIONS OF RULE 62-341.443, F.A.C. ANY DEVIATIONS FROM THESE CONDITIONS MAY SUBJECT THE PERMITTEE TO ENFORCEMENT ACTION AND POSSIBLE PENALTIES.
2. A REVIEW OF THE LOCATION OF THIS PROJECT INDICATES THAT IT IS NOT ON STATE-OWNED SUBMERGED LANDS.
3. THIS GENERAL PERMIT IS HEREBY GRANTED TO FDOT, COUNTIES AND MUNICIPALITIES TO CONDUCT THE ACTIVITIES DESCRIBED BELOW:
 - a. THE REPLACEMENT, MODIFICATION, OR MAINTENANCE OF BRIDGES AND APPROACHES WHERE THE COMBINED TOTAL OF DREDGING AND FILLING, BOTH TEMPORARY AND PERMANENT, IN WETLANDS AND OTHER SURFACE WATERS DOES NOT EXCEED 0.50 ACRES.
 - b. CHANNEL CLEARING AND SHAPING, NOT TO EXCEED A COMBINED TOTAL OF 0.5 ACRES OF DREDGING AND FILLING IN WETLANDS AND OTHER SURFACE WATERS.
 - c. IN ADDITION TO COMPLIANCE WITH THE NOTICE PROVISIONS OF SUBSECTION 62-343.090(1) F.A.C., WITHIN 90 DAYS FOLLOWING COMPLETION OF CONSTRUCTION THE PERMITTEE WILL NOTIFY BY LETTER THE DEPARTMENT OFFICE TO WHICH NOTICE WAS ORIGINALLY GIVEN OF THE DATE CONSTRUCTION ACTIVITIES WERE COMPLETED.
 - d. NO DREDGING OF ACCESS OR WORK CHANNELS IS AUTHORIZED BY THIS GENERAL PERMIT.
 - e. TEMPORARY FILL ROADS SHALL NOT BE CONSTRUCTED WATERWARD OF MEAN HIGH WATER OR ORDINARY HIGH WATER.
 - f. ALL FILL PLACED IN WETLANDS, OTHER THAN FILL ON WHICH A BRIDGE OR APPROACH DESCRIBED IN PARAGRAPH (A) IS CONSTRUCTED, SHALL BE REGRADED TO THE ORIGINAL WETLAND ELEVATIONS AND THESE FILLED WETLAND AREAS REVEGETATED WITH NATIVE WETLAND SPECIES ENDEMIC TO ADJOINING, UNDISTURBED WETLANDS, WITHIN SEVEN (7) DAYS OF THE COMPLETION OF CONSTRUCTION.

g. MINIMUM HORIZONTAL AND VERTICAL NAVIGATIONAL CLEARANCES ON BRIDGES OVER NAVIGABLE WATERS OF THE UNITED STATES SHALL BE ESTABLISHED IN ACCORDANCE WITH PROCEDURES OUTLINED IN THE U.S. COAST GUARD BRIDGE ADMINISTRATION MANUAL, COMDTINST M16590.5A, JUNE 6, 1994;

h. TEMPORARY EROSION CONTROLS FOR ALL EXPOSED SOILS WITHIN WETLANDS AND OTHER SURFACE WATERS SHALL BE COMPLETED WITHIN SEVEN CALENDAR DAYS OF THE MOST RECENT CONSTRUCTION ACTIVITY;

i. THIS GENERAL PERMIT DOES NOT AUTHORIZE THE USE OF DREDGED MATERIAL FOR ROADWAY CONSTRUCTION;

j. THE PERMITTEE SHALL USE EROSION AND SEDIMENT CONTROL BEST MANAGEMENT PRACTICES INCLUDING TURBIDITY CURTAINS OR SIMILAR DEVICES, IN STRICT ADHERENCE TO THESE PRACTICES AS DESCRIBED IN CHAPTER 6, THE FLORIDA DEVELOPMENT MANUAL: A GUIDE TO SOUND LAND AND WATER MANAGEMENT (FLORIDA DEPARTMENT OF ENVIRONMENTAL REGULATION, 19880 INCORPORATED BY REFERENCE HEREIN TO PREVENT VIOLATIONS OF STATE WATER QUALITY STANDARDS.

k. THIS GENERAL PERMIT AUTHORIZES DREDGING AND FILLING FOR THE REPLACEMENT, MODIFICATION, OR MAINTENANCE OF A BRIDGE AND APPROACHES FOR A SPECIFIC CROSSING OF A WETLAND OR OTHER SURFACE WATER. REPLACEMENT OR MODIFICATION OF A BRIDGE THAT INCLUDES CHANGES IN THE CONFIGURATION OF THE BRIDGE AND FILL AREAS DUE TO CHANGES IN MATERIALS, CONSTRUCTION TECHNIQUES, OR MEETING CURRENT CONSTRUCTION CODES OR SAFETY STANDARDS ARE AUTHORIZED UNDER THIS PERMIT. ANY CONNECTING ROAD EXPANSION OR ALTERATION ASSOCIATED WITH SUCH REPLACEMENT OR MODIFICATION MUST BE AUTHORIZED BY A SEPARATE GENERAL OR INDIVIDUAL PERMIT UNDER PART IV OF CHAPTER 373, F.S., AS APPLICABLE, BEFORE THE START OF CONSTRUCTION.

l. THIS GENERAL PERMIT DOES NOT AUTHORIZE REPLACEMENT OR MODIFICATION OF BRIDGES OR APPROACHES WHICH INVOLVE THE CONSTRUCTION OF ADDITIONAL TRAFFIC LANES.

III. MAINTENANCE

ALL OF THE CONTROLS SHALL BE MAINTAINED AT ALL TIMES

THE CONTRACTOR SHALL BE RESPONSIBLE FOR DAILY INSPECTION AND MAINTENANCE OF ALL EROSION CONTROL DEVICES THROUGHOUT THE CONSTRUCTION PHASE OF THE PROJECT. THE CONTRACTOR SHALL BE RESPONSIBLE FOR COMPLETING AN INSPECTION REPORT AFTER ANY 1/2" RAINFALL OR WEEKLY IF NO RAIN EVENT OCCURRED. IT IS THE CONTRACTOR'S RESPONSIBILITY TO MAINTAIN RAIN GAUGES ON THE PROJECT SITE AND RECORD WEEKLY RAINFALL.

IV. NON-STORM WATER DISCHARGES

IT IS EXPECTED THAT THE FOLLOWING NON-STORM WATER DISCHARGES WILL OCCUR FROM THE SITE DURING THE CONSTRUCTION PERIOD:

1. NONE

ALL NON-STORM WATER DISCHARGES WILL BE DIRECTED TO THE SEDIMENT BASIN PRIOR TO DISCHARGE OR AS DIRECTED BY THE ENGINEER. IF CONTAMINATED SOIL OR GROUNDWATER IS ENCOUNTERED, THE ENGINEER WILL BE CONTACTED.

V. MATERIAL MANAGEMENT PRACTICES

THE FOLLOWING ARE THE MATERIAL PRACTICES THAT WILL BE USED TO REDUCE THE RISK OF SPILLS OR OTHER ACCIDENTAL EXPOSURE OF MATERIALS AND SUBSTANCES TO STORM WATER RUNOFF:

A. GOOD HOUSEKEEPING

THE FOLLOWING GOOD HOUSEKEEPING PRACTICES SHALL BE FOLLOWED ON-SITE DURING THE CONSTRUCTION PROJECT:

STORE ONLY ENOUGH PRODUCT REQUIRED TO DO THE JOB ON SITE. ALL MATERIALS STORED ON SITE SHALL BE STORED IN A NEAT, ORDERLY MANNER IN THEIR ORIGINAL MANUFACTURER'S LABELED CONTAINERS UNDER A ROOF OR OTHER CONTAINED ENCLOSURE. SUBSTANCES SHALL NOT BE MIXED WITH ON ANOTHER UNLESS RECOMMENDED BY THE MANUFACTURER. WHENEVER POSSIBLE, ALL OF A PRODUCT SHALL BE USED BEFORE DISPOSING OF THE CONTAINER. MANUFACTURERS' RECOMMENDATIONS FOR PROPER USE AND DISPOSAL SHALL BE FOLLOWED. THE SITE SUPERINTENDENT SHALL INSPECT DAILY TO ENSURE PROPER USE AND DISPOSAL OF MATERIALS ON-SITE.

B. HAZARDOUS PROJECTS

THESE PRACTICES ARE USED TO REDUCE THE RISKS ASSOCIATED WITH HAZARDOUS MATERIALS.

PRODUCTS WILL BE KEPT IN ORIGINAL CONTAINERS UNLESS THEY ARE NOT RESEALABLE. SECONDARY CONTAINMENT SHALL BE PROVIDED FOR ALL OPENED CONTAINERS. ORIGINAL LABELS AND MATERIAL SAFETY DATA SHALL BE KEPT ON-SITE ON THE CONSTRUCTION OFFICE TRAILER. IF SURPLUS PRODUCT MUST BE DISPOSED OF, MANUFACTURERS OR LOCAL STATE RECOMMENDED METHODS OF PROPER DISPOSAL SHALL BE FOLLOWED. THE CONTRACTOR MUST IDENTIFY A DESIGNATED FUEL TANK STORAGE AREA AWAY FROM DRAINAGE STRUCTURES, PONDS, BASINS, AND WETLANDS.

C. CONCRETE TRUCKS

CONTRACTOR SHALL DESIGNATE AN AREA AWAY FROM DRAINAGE STRUCTURES, PONDS, BASINS, AND WETLANDS FOR DISCHARGE OF SURPLUS CONCRETE OR DRUM WASH WATER AND SHALL INSTALL A CONTAINMENT BERM AROUND THIS AREA TO PREVENT RUNOFF TO THE REMAINDER OF THE SITE. HARD DEBRIS SHALL BE DISPOSED OF BY CONTRACTOR UPON COMPLETION OF THE PROJECT.

D. SPILL CONTROL PRACTICES

THE CONTRACTOR SHALL PROVIDE MANATEE COUNTY PUBLIC WORKS WITH AN ENVIRONMENTAL MANAGEMENT PLAN THAT WILL INCLUDE TOXIC SUBSTANCE AND SPILL CONTAINMENT REPORTING AND RESPONSE. THE PLAN SHALL SPECIFY WHAT MANAGEMENT PRACTICES AND CONTAINMENT METHODS WILL BE USED TO PREVENT POTENTIAL POLLUTANTS (FUEL, LUBRICANTS, HERBICIDES, ETC.) FROM SPILLING INTO SURFACE WATERS. IF A SPILL DOES OCCUR OR IF HAZARDOUS MATERIAL (INCLUDING SUSPECT ASBESTOS) RELEASE OCCURS, OR IF CONTAMINATED SOIL/GROUNDWATER IS ENCOUNTERED, SOME OF THESE MANAGEMENT PRACTICES AND CONTAINMENT METHODS SHALL INCLUDE, BUT ARE NOT LIMITED TO:

1. MANUFACTURERS' RECOMMENDED METHODS FOR SPILL CLEANUP WILL BE CLEARLY POSTED AND SITE PERSONNEL WILL BE MADE AWARE OF THE PROCEDURES AND THE LOCATION OF THE INFORMATION CLEANUP SUPPLIES.

2. ALL SPILLS WILL BE CLEANED UP IMMEDIATELY AFTER DISCOVERY.


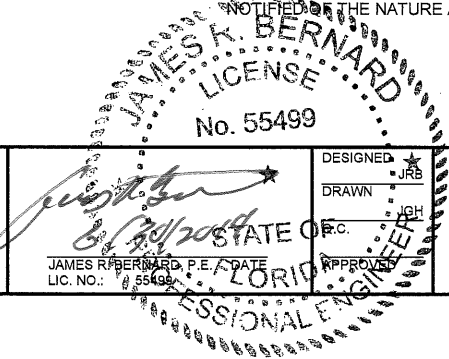
3. THE SPILL AREA WILL BE KEPT WELL VENTILATED AND PERSONNEL WILL WEAR APPROPRIATE PROTECTIVE CLOTHING TO PREVENT INJURY FROM CONTACT WITH A HAZARDOUS SUBSTANCE.

4. SPILLS OF TOXIC OR HAZARDOUS MATERIAL WILL BE REPORTED TO THE APPROPRIATE STATE OR LOCAL GOVERNMENT AGENCY, REGARDLESS OF SIZE.

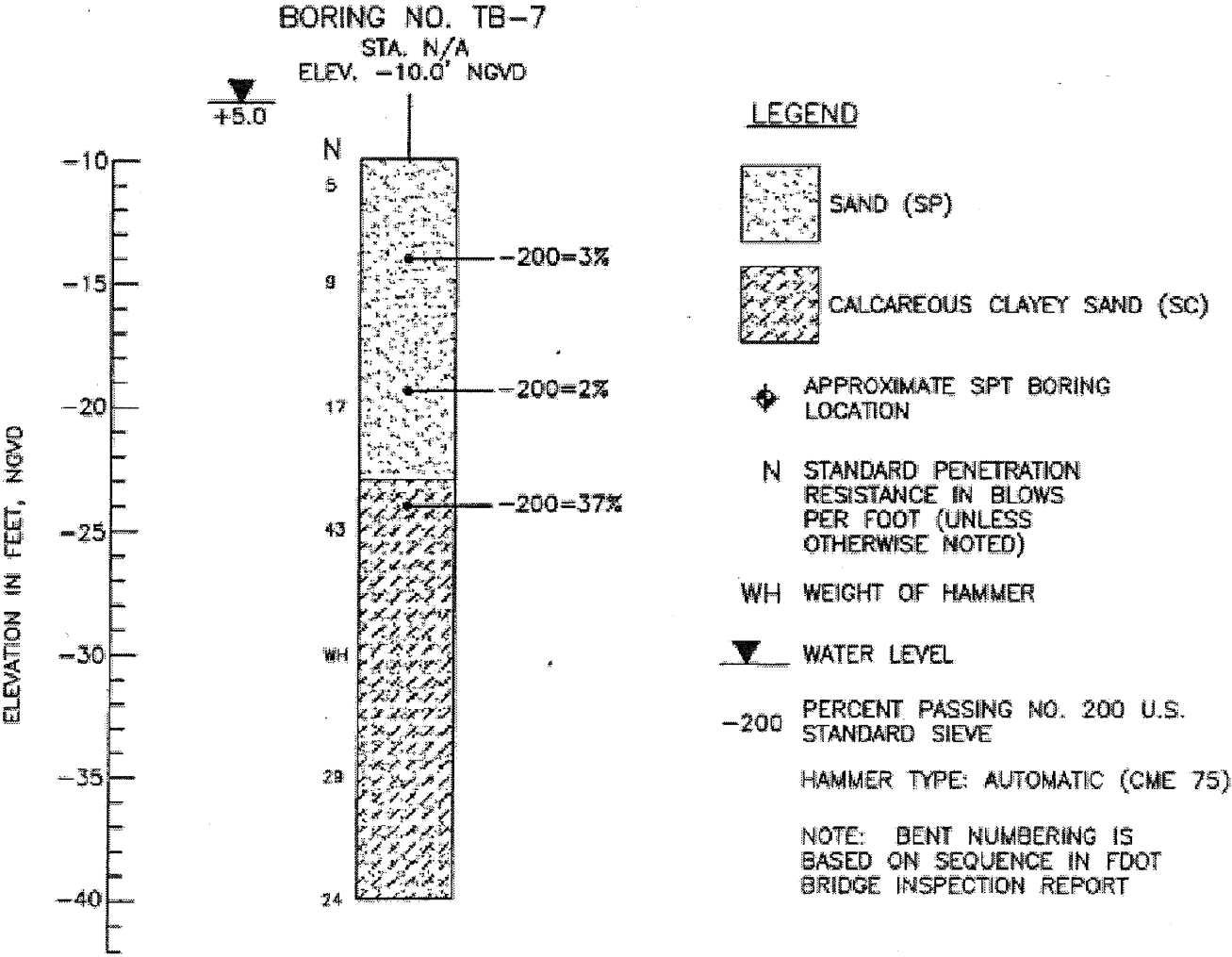
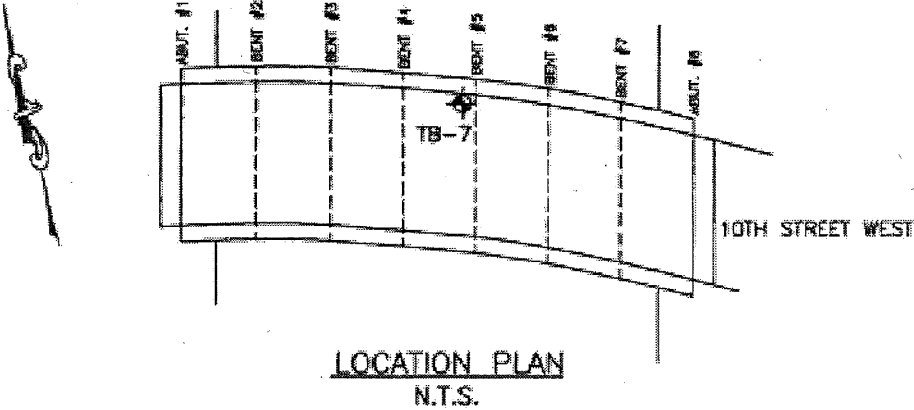
5. THE SPILL PREVENTION PLAN WILL BE PREPARED BY THE CONTRACTOR AND KEPT IN THE CONSTRUCTION OFFICE TRAILER AND WILL INCLUDE MEASURES TO PREVENT THIS TYPE OF SPILL FROM REOCCURRING AND HOW TO CLEAN UP THE SPILL IF THERE ARE OTHERS. A DESCRIPTION OF THE SPILL, WHAT CAUSED IT, AND THE CLEANUP MEASURES WILL ALSO BE INCLUDED. ALL SPILLS AND RESPONSES WILL BE REPORTED TO THE APPROPRIATE AGENCY.

6. THE SITE SUPERINTENDENT WILL BE THE SPILL PREVENTION AND CLEANUP COORDINATOR. HE WILL DESIGNATE OTHER SITE PERSONNEL WHO WILL RECEIVE SPILL PREVENTION AND CLEANUP TRAINING. THESE INDIVIDUALS WILL EACH BECOME RESPONSIBLE FOR A PARTICULAR PHASE OF PREVENTION AND CLEANUP. THE NAMES OF RESPONSIBLE SPILL PERSONNEL WILL BE POSTED IN THE MATERIAL STORAGE AREA AND IN THE OFFICE TRAILER ON SITE.

7. USE AND CHARACTERISTICS OF FUEL OR CHEMICAL STORAGE TANK ON SITE SHALL SHALL COMPLY WITH ALL RELATED FEDERAL, STATE AND LOCAL REGULATIONS. STORAGE TANKS MUST BE LOCATED AS FAR AS POSSIBLE FROM ANY DRAINAGE STRUCTURES, DITCHES AND/OR SURFACE WATERS. IN ADDITION, THE CONTRACTOR MUST PROVIDE A SECONDARY CONTAINMENT WITH A LINER CHEMICALLY RESISTANT TO THE CHEMICAL OR FUEL STORED ON SITE. THE SECONDARY CONTAINMENT MUST BE SIZED TO CONTAIN MINIMUM OF ONE AND A HALF TIMES THE TOTAL CAPACITY OF THE STORAGE TANK BEING USED. THE CONTRACTOR HAS TO PROVIDE A DAILY INSPECTION LOG FOR THE SECONDARY CONTAINMENT WITH INDICATION OF DATE, INSPECTORS NAME AND INSPECTION REPORT. FURTHERMORE, ANY CONTAMINATION HAS TO BE IMMEDIATELY CONTAINED AND THE COUNTY INSPECTOR MUST BE NOTIFIED OF THE NATURE AND EXTENT OF THE CONTAMINATION.

				MANATEE COUNTY		SCOUR REMEDIATION PROJECT		 380 Park Place Blvd., Suite 300, Clearwater, Florida, 33759 www.cardnotbe.com - 727-531-3505 Certificate of Authorization No. 3843		 DESIGNED: JRB DRAWN: JGH CHECKED: JGH APPROVED: JGH NOTED: JGH DATE: 6/24/2014 LIC. NO.: 55499		STORM WATER POLLUTION PREVENTION PLAN (2)		PROJECT NO: 00193008.22 DATE: 6-30-2014 SHEET NO: 11	
NO.	DESCRIPTION	BY	DATE												

BORING DATA
BRIDGE NO. 130007
10TH STREET WEST OVER SNEAD ISLAND CUTOFF
MANATEE COUNTY



SOURCE: PSI BORING DATA (DATED 9/18/01)

--	--	--	--	--	--	--	--	--	--	--	--	--	--	--	--	--	--	--	--	--	--	--	--	--	--	--	--	--	--	--	--	--	--	--	--	--	--	--	--	--	--	--	--	--	--	--	--	--	--	--	--	--	--	--	--	--	--	--	--	--	--	--	--	--	--	--	--	--	--	--	--	--	--	--	--	--	--	--	--	--	--	--	--	--	--	--	--	--	--	--	--	--	--	--	--	--	--	--	--	--	--	--	--	--	--	--	--	--	--	--	--	--	--	--	--	--	--	--	--	--	--	--	--	--	--	--	--	--	--	--	--	--	--	--	--	--	--	--	--	--	--	--	--	--	--	--	--	--	--	--	--	--	--	--	--	--	--	--	--	--	--	--	--	--	--	--	--	--	--	--	--	--	--	--	--	--	--	--	--	--	--	--	--	--	--	--	--	--	--	--	--	--	--	--	--	--	--	--	--	--	--	--	--	--	--	--	--	--	--	--	--	--	--	--	--	--	--	--	--	--	--	--	--	--	--	--	--	--	--	--	--	--	--	--	--	--	--	--	--	--	--	--	--	--	--	--	--	--	--	--	--	--	--	--	--	--	--	--	--	--	--	--	--	--	--	--	--	--	--	--	--	--	--	--	--	--	--	--	--	--	--	--	--	--	--	--	--	--	--	--	--	--	--	--	--	--	--	--	--	--	--	--	--	--	--	--	--	--	--	--	--	--	--	--	--	--	--	--	--	--	--	--	--	--	--	--	--	--	--	--	--	--	--	--	--	--	--	--	--	--	--	--	--	--	--	--	--	--	--	--	--	--	--	--	--	--	--	--	--	--	--	--	--	--	--	--	--	--	--	--	--	--	--	--	--	--	--	--	--	--	--	--	--	--	--	--	--	--	--	--	--	--	--	--	--	--	--	--	--	--	--	--	--	--	--	--	--	--	--	--	--	--	--	--	--	--	--	--	--	--	--	--	--	--	--	--	--	--	--	--	--	--	--	--	--	--	--	--	--	--	--	--	--	--	--	--	--	--	--	--	--	--	--	--	--	--	--	--	--	--	--	--	--	--	--	--	--	--	--	--	--	--	--	--	--	--	--	--	--	--	--	--	--	--	--	--	--	--	--	--	--	--	--	--	--	--	--	--	--	--	--	--	--	--	--	--	--	--	--	--	--	--	--	--	--	--	--	--	--	--	--	--	--	--	--	--	--	--	--	--	--	--	--	--	--	--	--	--	--	--	--	--	--	--	--	--	--	--	--	--	--	--	--	--	--	--	--	--	--	--	--	--	--	--	--	--	--	--	--	--	--	--	--	--	--	--	--	--	--	--	--	--	--	--	--	--	--	--	--	--	--	--	--	--	--	--	--	--	--	--	--	--	--	--	--	--	--	--	--	--	--	--	--	--	--	--	--	--	--	--	--	--	--	--	--	--	--	--	--	--	--	--	--	--	--	--	--	--	--	--	--	--	--	--	--	--	--	--	--	--	--	--	--	--	--	--	--	--	--	--	--	--	--	--	--	--	--	--	--	--	--	--	--	--	--	--	--	--	--	--	--	--	--	--	--	--	--	--	--	--	--	--	--	--	--	--	--	--	--	--	--	--	--	--	--	--	--	--	--	--	--	--	--	--	--	--	--	--	--	--	--	--	--	--	--	--	--	--	--	--	--	--	--	--	--	--	--	--	--	--	--	--	--	--	--	--	--	--	--	--	--	--	--	--	--	--	--	--	--	--	--	--	--	--	--	--	--	--	--	--	--	--	--	--	--	--	--	--	--	--	--	--	--	--	--	--	--	--	--	--	--	--	--	--	--	--	--	--	--	--	--	--	--	--	--	--	--	--	--	--	--	--	--	--	--	--	--	--	--	--	--	--	--	--	--	--	--	--	--	--	--	--	--	--	--	--	--	--	--	--	--	--	--	--	--	--	--	--	--	--	--	--	--	--	--	--	--	--	--	--	--	--	--	--	--	--	--	--	--	--	--	--	--	--	--	--	--	--	--	--	--	--	--	--	--	--	--	--	--	--	--	--	--	--	--	--	--	--	--	--	--	--	--	--	--	--	--	--	--	--	--	--	--	--	--	--	--	--	--	--	--	--	--	--	--	--	--	--	--	--	--	--	--	--	--	--	--	--	--	--	--	--	--	--	--	--	--	--	--	--	--	--	--	--	--	--	--	--	--	--	--	--	--	--	--	--	--	--	--	--	--	--	--	--	--	--	--	--	--	--	--	--	--	--	--	--	--	--	--	--	--	--	--	--	--	--	--	--	--	--	--	--	--	--	--	--	--	--	--	--	--	--	--	--	--	--	--	--	--	--	--	--	--	--	--	--	--	--	--	--	--	--	--	--	--	--	--	--	--	--	--	--	--	--	--	--	--	--	--	--	--	--	--	--	--	--	--	--	--	--	--	--	--	--	--	--	--	--	--	--	--	--	--	--	--	--	--	--	--	--	--	--	--	--	--	--	--	--	--	--	--	--	--	--	--	--	--	--	--	--	--	--	--	--	--	--	--	--	--	--	--	--	--	--	--	--	--	--	--	--	--	--	--	--	--	--	--	--	--	--	--	--	--	--	--	--	--	--	--	--	--	--	--	--	--	--	--	--	--	--	--	--	--	--	--	--	--	--	--	--	--	--	--	--	--	--	--	--	--	--	--	--	--	--	--	--	--	--	--	--	--	--	--	--	--	--	--	--	--	--	--	--	--	--	--	--	--	--	--	--	--	--	--	--	--	--	--	--	--	--	--	--	--	--	--	--	--	--	--	--	--	--	--	--	--	--	--	--	--	--	--	--	--	--	--	--	--	--	--	--	--	--	--	--	--	--	--	--	--	--	--	--	--	--	--	--	--	--	--	--	--	--	--	--	--	--	--	--	--	--	--	--	--	--	--	--	--	--	--	--	--	--	--	--	--	--	--	--	--	--	--	--	--	--	--	--	--	--	--	--	--	--	--	--	--	--	--	--	--	--	--	--	--	--	--	--	--	--	--	--	--	--	--	--	--	--	--	--	--	--	--	--	--	--	--	--	--	--	--	--	--	--	--	--	--	--	--	--	--	--	--	--	--	--	--	--	--	--	--	--	--	--	--	--	--	--	--	--	--	--	--	--	--	--	--	--	--	--	--	--	--	--	--	--	--	--	--	--	--	--	--	--	--	--	--	--	--	--	--	--	--	--	--	--	--	--	--	--	--	--	--	--	--	--	--	--	--	--	--	--	--	--	--	--	--	--	--	--	--	--	--	--	--	--	--	--	--	--	--	--	--	--	--	--	--	--	--	--	--	--	--	--	--	--	--	--	--	--	--	--	--	--	--	--	--	--	--	--	--	--	--	--	--	--	--	--	--	--	--	--	--	--	--	--	--	--	--	--	--	--	--	--	--	--	--	--	--	--	--	--	--	--	--	--	--	--	--	--	--	--	--	--	--	--	--	--	--	--	--	--	--	--	--	--	--	--	--	--	--	--	--	--	--	--	--	--	--	--	--	--	--	--	--	--	--	--	--	--	--	--	--	--	--