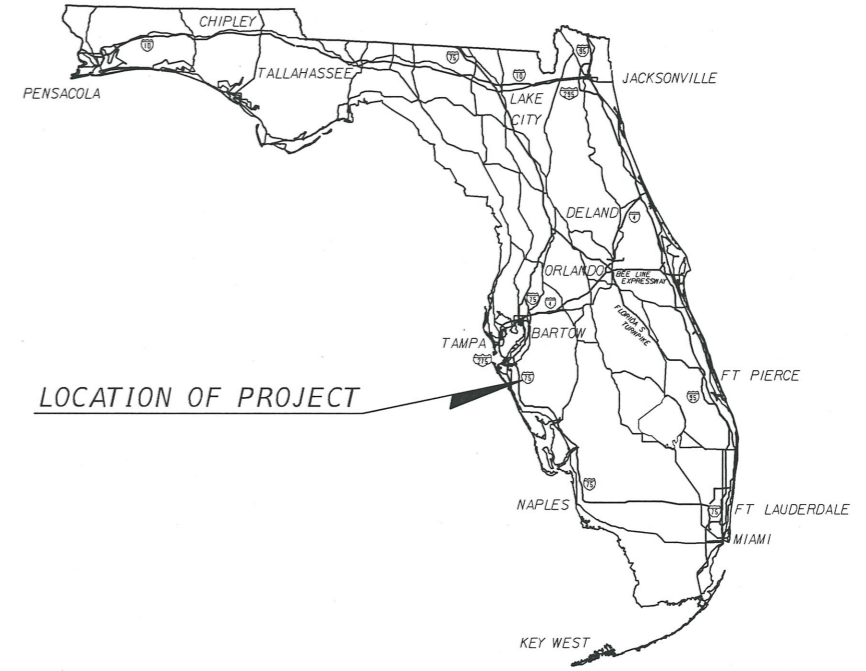


**MANATEE COUNTY  
PUBLIC WORKS DEPARTMENT**

**CONTRACT PLANS**

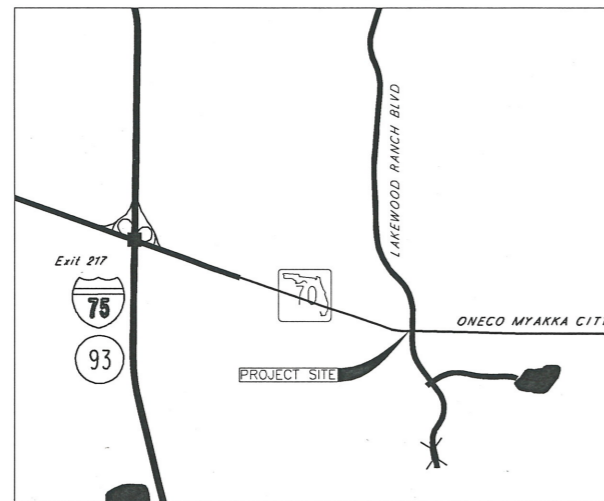
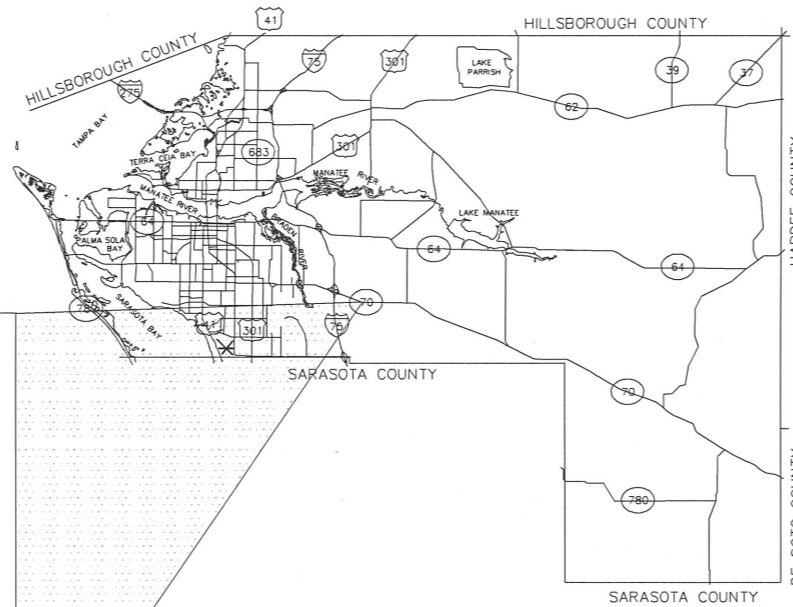
FINANCIAL PROJECT ID (431019-1-58-01)  
MANATEE COUNTY (13160)  
(FEDERAL FUNDS)  
ONECO-MYAKKA CITY RD (SR 70)  
AT LAKEWOOD RANCH BLVD (M.P. 7.448)  
COUNTY PROJECT 6084460

**SIGNALIZATION PLANS**



**INDEX OF SIGNALIZATION PLANS**

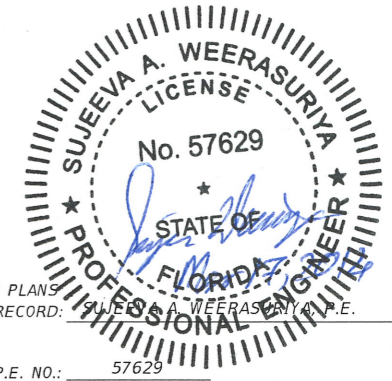
SHEET NO.	SHEET DESCRIPTION
T-1	KEY SHEET
T-2	TABULATION OF QUANTITIES
T-3	GENERAL NOTES
T-4	PAY ITEM NOTES
T-5	SURVEY REFERENCE POINTS
T-6 TO T-7	SIGNALIZATION PLAN
T-8	UTILITY PLAN
T-9	GUIDE SIGN WORKSHEET
T-10	MAST ARM TABULATION
T-11	MAST ARM ASSEMBLIES DATA TABLE (SPECIAL)
T-12	FOUNDATION DETAILS FOR POLE 1
G-1 TO G-2	REPORT OF CORE BORINGS



SIGNALIZATION SHOP DRAWINGS  
TO BE SUBMITTED TO:  
SUJEEVA A. WEERASURIYA, P.E.  
HDR ENGINEERING, INC.  
5426 BAY CENTER DRIVE, STE. 400  
TAMPA, FLORIDA 33609-3444  
PHONE NO. (813) 282-2300

PLANS PREPARED BY:  
HDR ENGINEERING, INC.  
2601 CATTLEMEN ROAD., STE. 400  
SARASOTA, FLORIDA 34232-6233  
PHONE NO. (941) 342-2700  
FAX (941) 342-6589  
CONTRACT NO. 12348  
VENDOR NO. VF-470680568  
CERTIFICATE OF AUTHORIZATION No. 4213

NOTE: THE SCALE OF THESE PLANS MAY  
HAVE CHANGED DUE TO REPRODUCTION.



SIGNALIZATION PLANS  
ENGINEER OF RECORD: SUJEEVA A. WEERASURIYA, P.E.

P.E. NO.: 57629

REVISIONS		
DATE	BY	DESCRIPTION
3/17/2014	EL	SHEET T-2 & T-6

KEY SHEET REVISIONS		
DATE	BY	DESCRIPTION

GOVERNING STANDARDS AND SPECIFICATIONS:  
Florida Department of Transportation 2013 Design Standards and  
revised Index Drawings, as appended herein, and applicable Articles  
and Subarticles of Division I and all of Divisions II & III of the 2013  
Standard Specifications for Road and Bridge Construction, as amended  
by Contract Documents.

For Design Standards click on the "Design Standards" link at the  
following web site: <http://www.dot.state.fl.us/rddesign/>

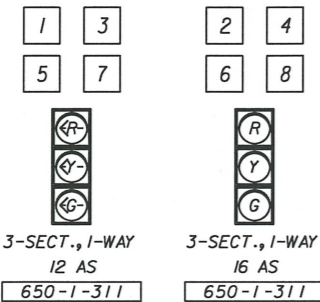
For the Standard Specifications for Road and Bridge Construction  
click on the "Specifications" link at the following web site:  
<http://www.dot.state.fl.us/specificationsoffice/>

MANATEE COUNTY PROJECT MANAGER: KENT BONTRAGER, P.E.

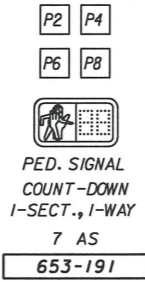
FISCAL YEAR	SHEET NO.
14	T-1



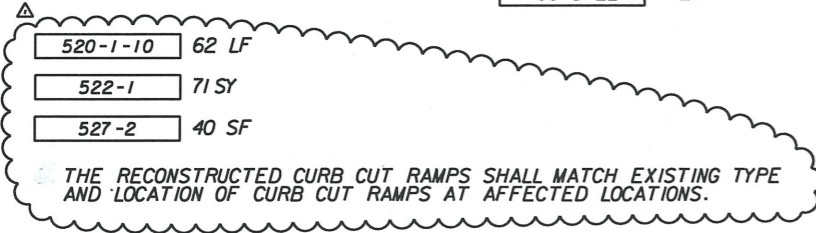
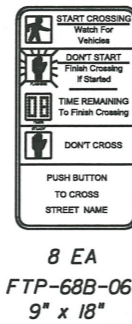
**SIGNAL HEAD DETAILS**



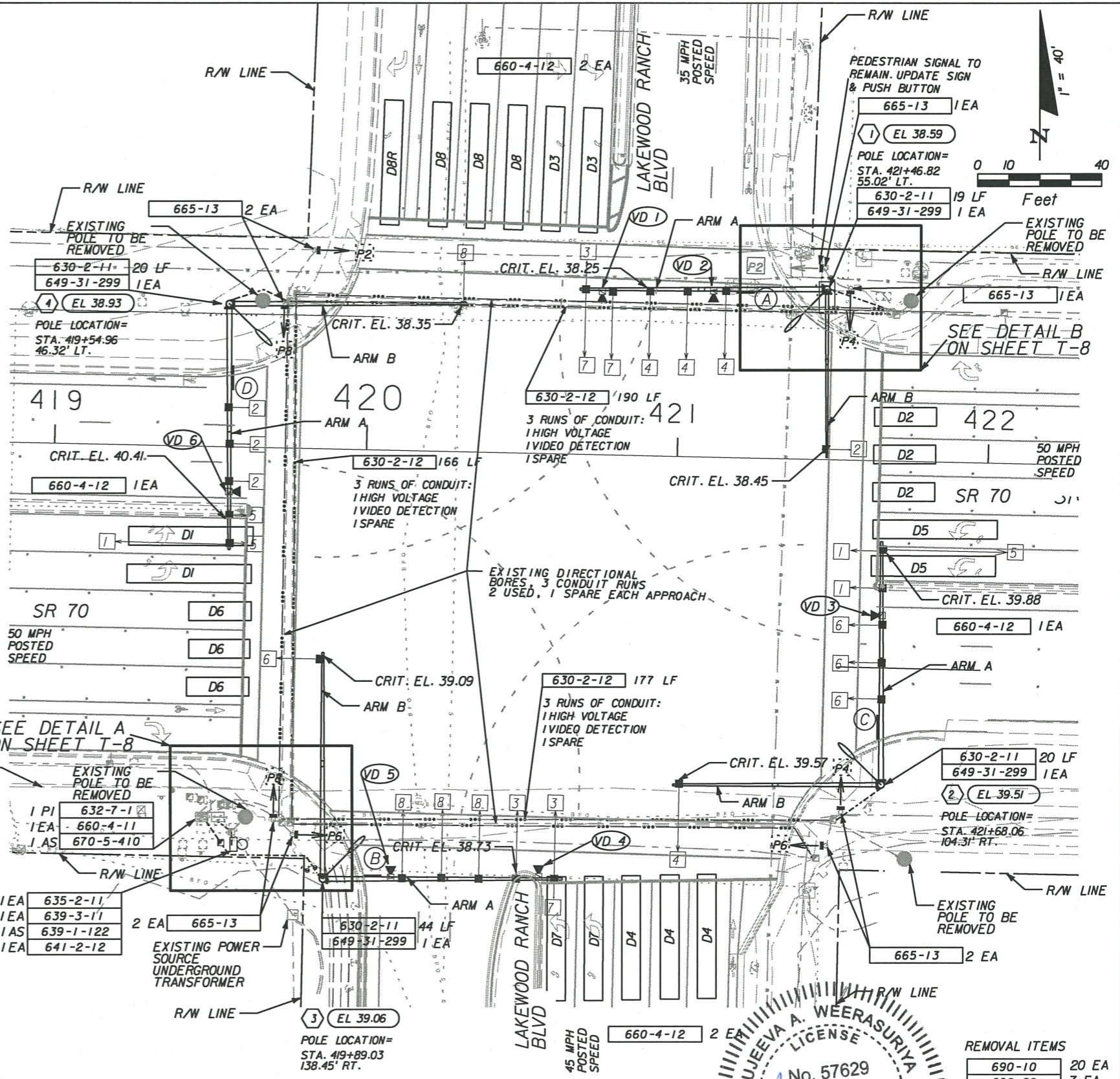
**PEDESTRIAN HEAD DETAILS**



**PEDESTRIAN DETECTOR SIGN**



- NOTES TO CONTRACTOR:**
- LOCATION OF EXISTING CONDUITS AND PULL BOXES SHOWN ARE APPROXIMATE ONLY AND THE CONTRACTOR SHALL FIELD VERIFY THE EXACT LOCATIONS.
  - INSTALL NEW CONDUITS AS SHOWN. CONNECT NEW SIGNAL WITH THE EXISTING CONTROLLER THROUGH EXISTING PULL BOXES AND CONDUITS.
  - POWER SERVICE METER BASE AND DISCONNECT SHALL BE INSTALLED ON THE CONCRETE SERVICE POLE AS SHOWN ON THE PLANS AND PER INDEX NUMBERS 17504 AND 17736.
  - THE NEW POWER SERVICE METER BASE AND DISCONNECT ON NEW SERVICE POLE SHOULD BE CONNECTED USING EXISTING CONDUIT THAT IS TO BE DISCONNECTED FROM EXISTING STRAIN POLE AND REROUTED THROUGH PULL BOX UTILIZING AVAILABLE SLACK. CONTRACTOR SHOULD COORDINATE WITH PRECO (PEACE RIVER ELECTRIC COOPERATIVE, INC) TO HAVE LINE DE-ENERGIZED WHILE THIS INSTALLATION TAKES PLACE.
- CONTRACTOR SHOULD ENSURE THAT THE CCTV POWER IS RECONNECTED AFTER THE RELOCATION OF THE POWER SERVICE DISCONNECT. CURRENTLY POWER TO CCTV COMES FROM DISCONNECT THAT SERVES CONTROLLER CABINET.
- EXISTING PEDESTRIAN SIGNAL POLES TO REMAIN IN PLACE. INSTALL NEW COUNTDOWN TYPE SIGNAL HEADS UNLESS NOTED OTHERWISE ON PLANS. REMOVE EXISTING PEDESTRIAN PUSH BUTTONS. INSTALL NEW DETECTOR PUSH BUTTONS SO THAT FACE OF BUTTON IS PARALLEL TO THE CROSSWALK TO BE USED. SEE DETAIL ON SHEET T-7.
  - CONTRACTOR SHALL MAINTAIN ALL SIDEWALKS AND PEDESTRIAN FACILITIES OR PROVIDE AND MAINTAIN SAFE ALTERNATIVE DURING CONSTRUCTION PER INDEX NUMBER 660.
  - CONTRACTOR SHOULD DIG WITH CAUTION IN SOUTHWEST CORNER AS THERE MAY BE IRRIGATION LINES IN THE VICINITY OF THE PROPOSED POLE LOCATION.



**LEGEND**

- [Symbol] DETECTION ZONE (VIRTUAL LOOPS) (40' x 6') POSITIONED 2' BEYOND STOP BAR
- [Symbol] DETECTION ZONE (VIRTUAL LOOPS) (20' x 6') POSITIONED 2' BEYOND STOP BAR
- [Symbol] VIDEO VEHICLE DETECTOR
- [Symbol] NEW PEDESTRIAN SIGNAL
- [Symbol] EXISTING SIGNAL POLE TO BE REMOVED
- [Symbol] 250w HPS LUMINAIRE DESIGNED TO OPERATE AT 110V

**REMOVAL ITEMS**

690-10	20 EA
690-20	7 EA
690-34-1	4 EA
690-60	16 EA
690-70	8 EA
690-80	1 EA
690-90	1 PI
690-100	1 PI

ADDED PAY ITEMS AND NOTE		3/17/2014	ETL	SCALE AS NOTED	HDR Engineering, Inc. 2601 Cattlemen Road Suite 400 Sarasota, FL 34232-6233 FBPR Certificate of Authorization No. 4213	DATE	MANATEE COUNTY PUBLIC WORKS	DESIGN ENGINEER	SIGNALIZATION PLAN LAKEWOOD RANCH BLVD. AND SR 70	SHEET NO.	
				DESIGNED BY		DATE		SUJEEVA A. WEERASURIYA		FLORIDA PROFESSIONAL ENGINEER LICENSE No. 57629	T-6
				DRAWN BY		PROJECT NO.		FL. LICENSE NO.			
				CHECKED BY		6084460		57629			
No.	REVISIONS	DATE	BY	CHECKED BY	SAW						