



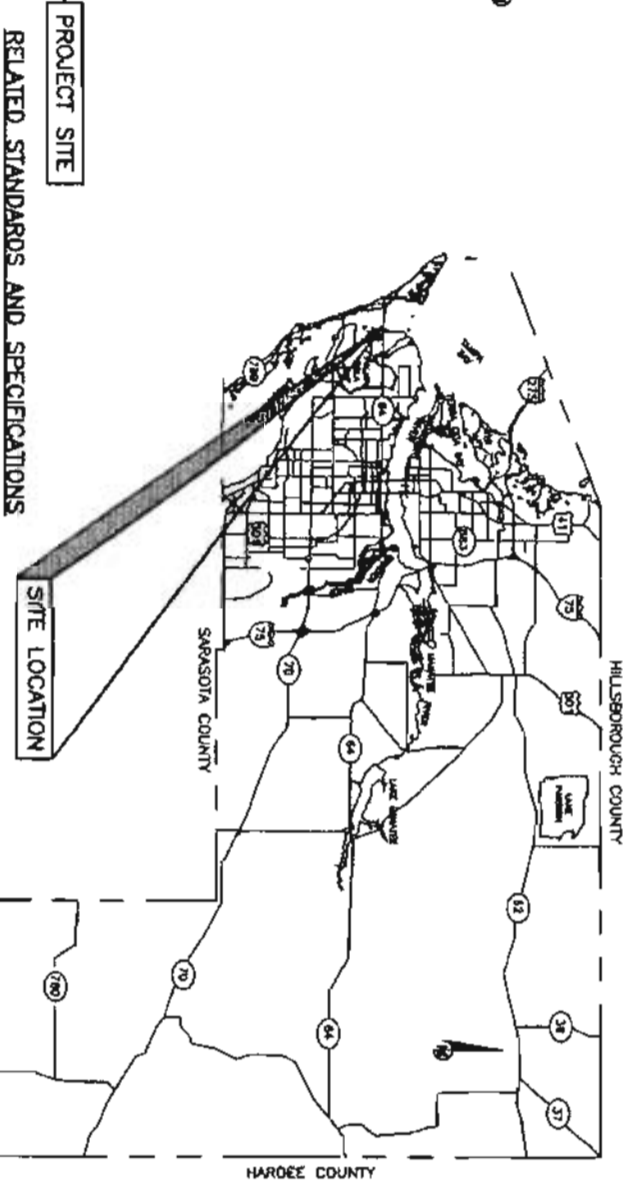
MANATEE COUNTY, FLORIDA NEAL PRESERVE TRAIL FROM CAUSEWAY PATH BOARDWALK FINANCIAL PROJECT ID 428133-1-58-01 (FEDERAL FUNDS)



**NEAL PRESERVE
FROM CAUSEWAY PATH
BOARDWALK
COVER SHEET**



VICINITY MAP
N.T.S.



PROJECT SITE

RELATED STANDARDS AND SPECIFICATIONS

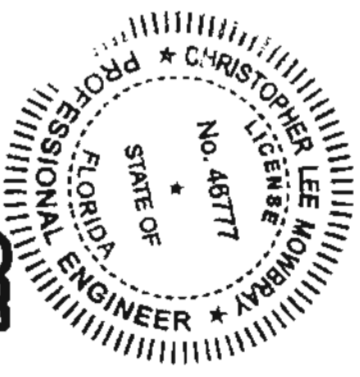
PROJECT DESCRIPTION
CONNECT NEAL PRESERVE TO EXISTING SIDEWALK ON NORTH SIDE OF SR 64 WITH APPROXIMATELY 2,000 LF OF 10' TRAIL & 79 LF OF 8' TRAIL UNDER THE BRIDGE.

GOVERNING STANDARDS AND SPECIFICATIONS:
FLORIDA DEPARTMENT OF TRANSPORTATION 2013 DESIGN STANDARDS AND REVISED INDEX DRAWINGS, AS APPENDED HEREIN, AND APPLICABLE ARTICLES AND SUBARTICLES OF DIVISION I AND ALL OF DIVISIONS II & III OF THE 2013 STANDARD SPECIFICATIONS FOR ROAD AND BRIDGE CONSTRUCTION, AS AMENDED BY CONTRACT DOCUMENTS.
FOR DESIGN STANDARDS CLICK ON THE "DESIGN STANDARDS" LINK AT THE FOLLOWING WEB SITE:
<http://www.dot.state.fl.us/roadspec/>

FOR THE STANDARD SPECIFICATIONS FOR ROAD AND BRIDGE CONSTRUCTION CLICK ON THE "SPECIFICATIONS" LINK AT THE FOLLOWING WEB SITE:
<http://www.dot.state.fl.us/specifications/spec2/>
ROADWAY SHOP DRAWINGS TO BE SUBMITTED TO:
CHRS MOWBRAY P.E.
1022 26TH AVENUE EAST BRADENTON FLORIDA 34208

100% PLANS

NO.	INDEX OF SHEETS
1	COVER SHEET
2-4	HORIZONTAL & VERTICAL CONTROL
5	GENERAL NOTES
6	QUANTITY SHEET
7-7A	TYPICAL SECTIONS
8-12	PLAN & PROFILE AND EROSION CONTROL PLAN
13-21	CROSS SECTIONS



Know what's below
Call before you dig

NO.	REVISION DESCRIPTION	BY	DATE
1	ADDITIONAL TYPICAL SECTIONS SHEET HAS BEEN ADDED TO THE CONSTRUCTION PLANS	AM	7/17/2013

PROJECT #	428133-1-58-01
SURVEY #	000
SEC./TWA./RBE	28./245./1/R
SCALE	1"=50'
SUBMITTED	09/09/00
DESIGNED	08/10/11
DRAWN	08/10/11
CHECKED	09/09/00
CHRISTOPHER LEE MOWBRAY P.E.	
FLORIDA P.E. # 48777	

Signature & Date
Chris Mowbray
SHEET 1



**NEAL PRESERVE TRAIL FROM
CAUSEWAY PATH
BOARDWALK
QUANTITY SHEET**

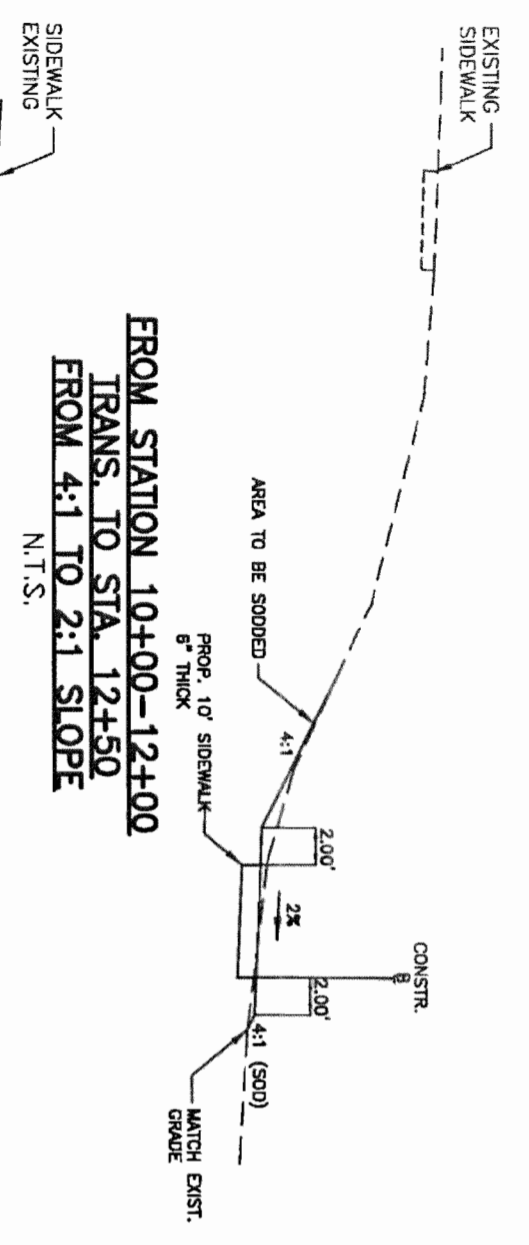
LINE NO.	FDOT ITEM NO.	DESCRIPTION	EST. QTY	U/M
1.	101-1	Mobilization	1	LS
2.	102-1	Maintenance of Traffic	1	LS
3.	104-6	Sand Bags Δ	387	LF
4.	104-11	Floating Turbidity Barrier	1,003	LF
5.	104-10-3	Sediment Barrier	2,003	LF
6.	110-1-1	Clearing & Grubbing Including	1	AC
7.	110-4	Removal of Existing Concrete Pavement Δ	766	SY
8.	120-1	Regular Excavation Δ	690	CY
9.	120-6	Embankment Δ	178	CY
10.	120-72	No. 24 Stone (Under The Trail) Δ	40	CY
11.	120-72	Gravel Fill (No. 57 Stone) Δ	54	CY
12.	400-1-25	Concrete Class 1 Δ	10	CY
13.	400-6	Anchor Beams Repair Δ	40	EA
14.	514-71-2	Plastic Filter Fabric Δ	734	SY
15.	515-2-302	Pedestrian/Bicycle Railing, Aluminum Only, 54" Type 1	375	LF
16.	522-1	Sidewalk Concrete 4" Thick	832	SY
17.	522-2	Sidewalk Concrete 6" Thick	2,420	SY
18.	530-1	Rip-Rap, Sand-Cement	70	CY
19.	530-2	Rip Rap Bank Shore (Under The Trail) Δ	143	TN
20.	530-3	Rip Rap F&I Ditch Lining(Under The Trail) Δ	119	TN
21.	570-1-2	Sodding (Performance Turf)	4,000	SY
22.	700-20-12	Single Post Sign, F&I, 12-20 SF	9	AS



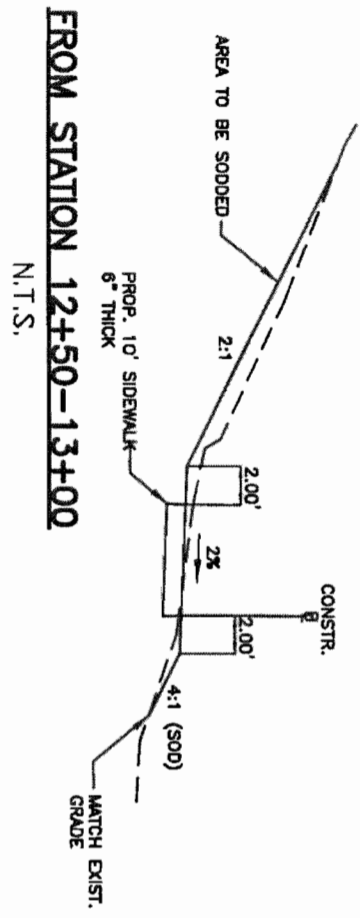
REVISION	DESCRIPTION	BY	DATE
1	NEW PAY ITEM NUMBERS & NEW QUANTITIES ADDED TO THE QUANTITY TAKEOFF	AL	7/17/2013

PROJECT #	280135-1-58-01
SURVEY #	000
SEC./TWN./RGE	28/349/18C
SCALE	1"=40'
SURVEYED	00/00/00
DESIGNED	09/08/11
DRAWN	09/17/11
CHECKED	00/00/00

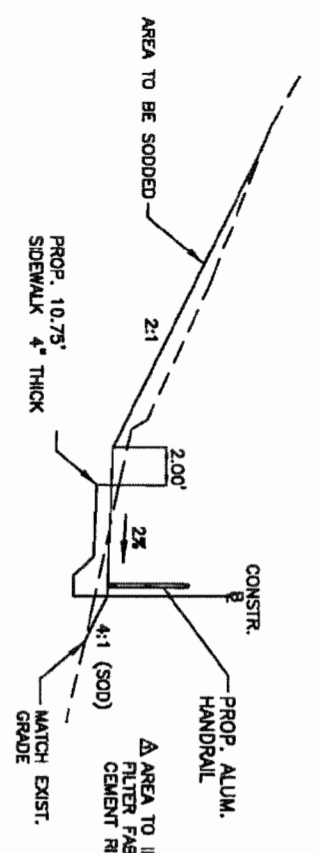
FLORIDA P.E. #	46777
SIGNATURE	<i>Christopher Lee Mowbray</i>
DATE	7/25/13



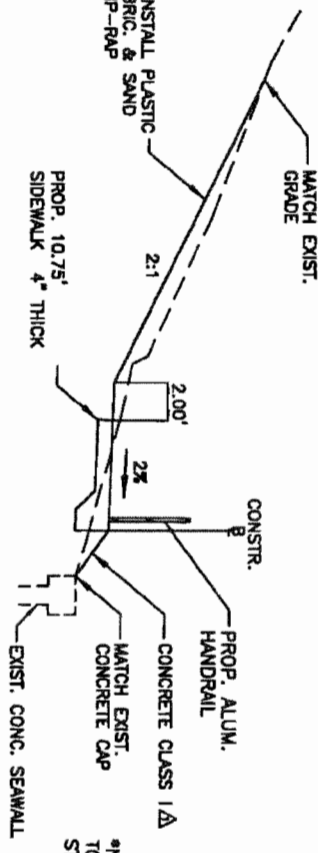
FROM STATION 10+00-12+00
TRANS. TO STA. 12+50
FROM 4:1 TO 2:1 SLOPE
N.T.S.



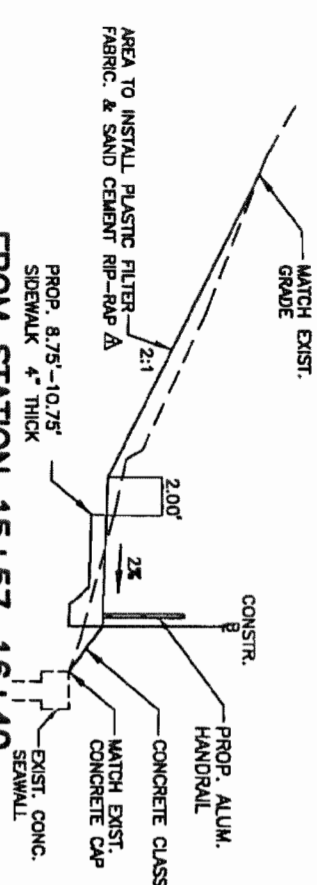
FROM STATION 12+50-13+00
N.T.S.



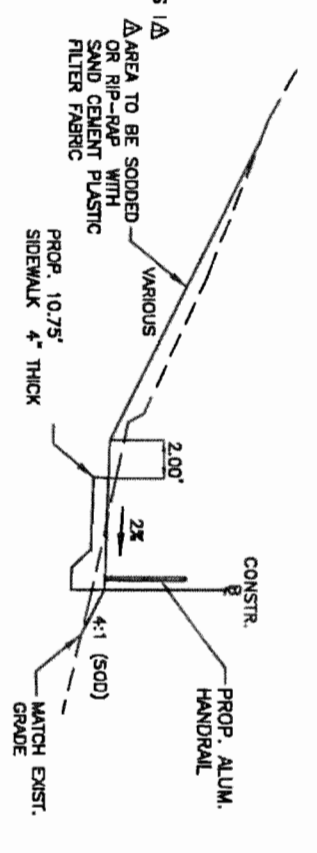
FROM STATION 13+00-13+50
N.T.S.



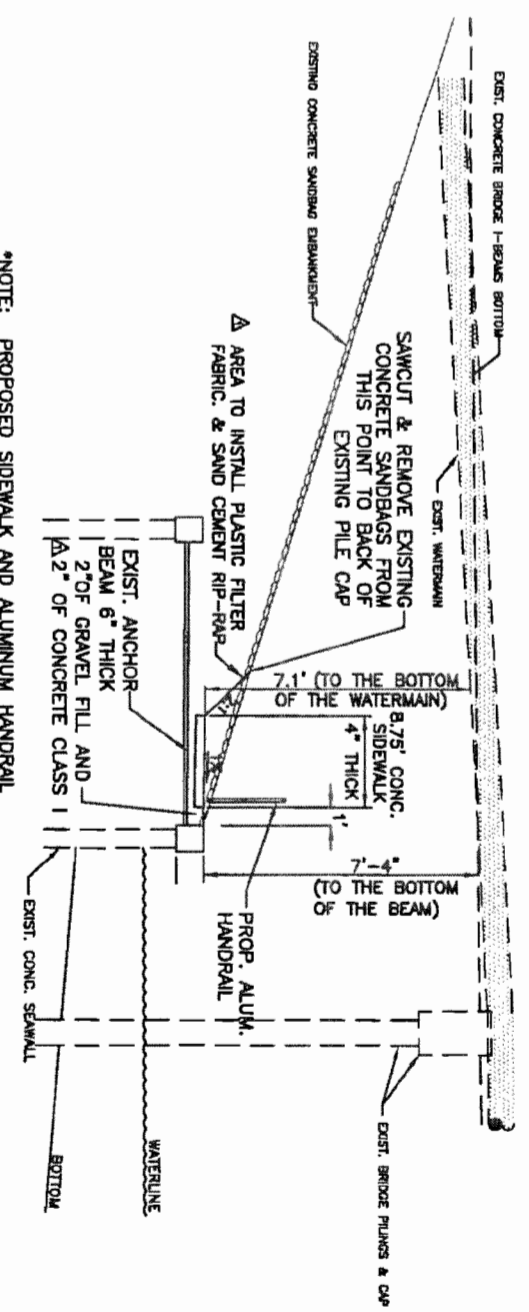
FROM STATION 13+50-14+79
N.T.S.



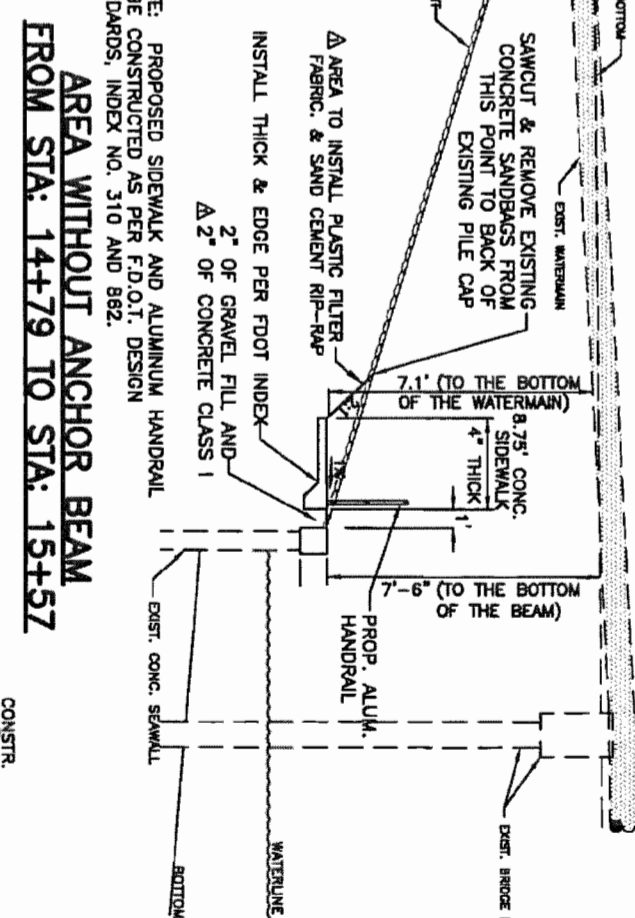
FROM STATION 15+57-16+40
TRANS. TO STA. 15+75-16+40
FROM 2:1 TO 3:1 SLOPE
N.T.S.



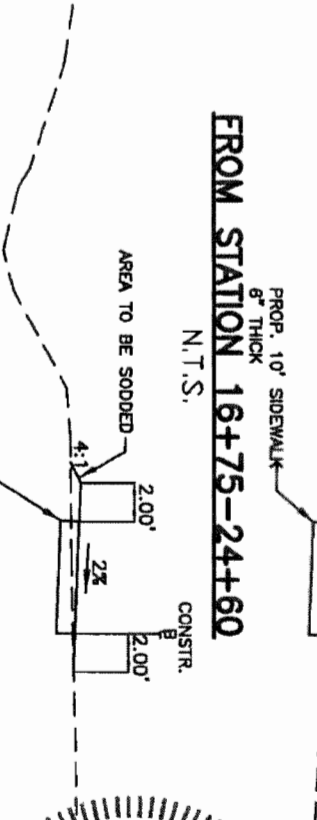
FROM STATION 16+40-16+75
N.T.S.



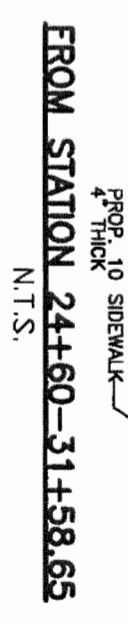
NOTE: PROPOSED SIDEWALK AND ALUMINUM HANDRAIL TO BE CONSTRUCTED AS PER F.D.O.T. DESIGN STANDARDS, INDEX NO. 310 AND 862.
AREA WITH ANCHOR BEAM
FROM STA. 14+79 TO STA. 15+57



NOTE: PROPOSED SIDEWALK AND ALUMINUM HANDRAIL TO BE CONSTRUCTED AS PER F.D.O.T. DESIGN STANDARDS, INDEX NO. 310 AND 862.
AREA WITHOUT ANCHOR BEAM
FROM STA. 14+79 TO STA. 15+57



FROM STATION 16+75-24+60
N.T.S.



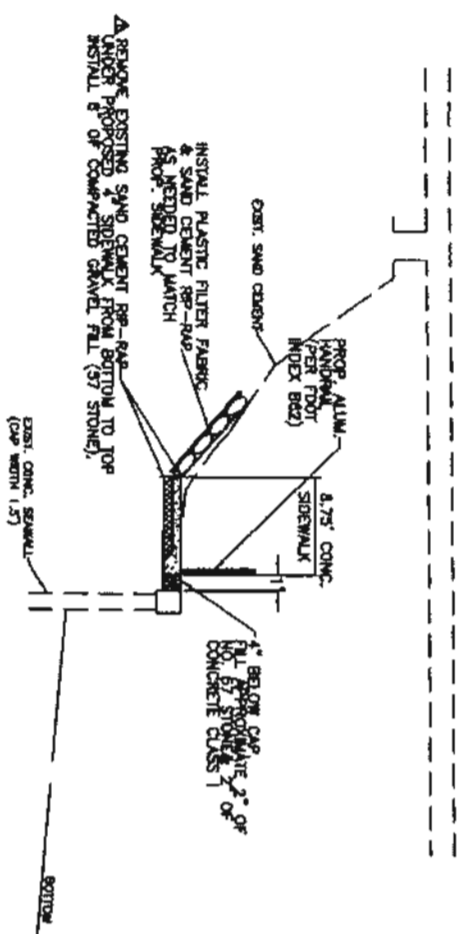
FROM STATION 24+60-31+58.65
N.T.S.

Professional Engineer Seal for Christopher L. Moore, No. 48777, State of Florida. The seal is circular with the text 'CHRISTOPHER L. MOORE', 'No. 48777', 'STATE OF FLORIDA', and 'PROFESSIONAL ENGINEER' around the perimeter.

REVISION	DESCRIPTION	BY	DATE
1	ANCHOR I-BEAM SECTION WAS REDESIGNED TO CONCRETE CLASS I	AE	7/17/2013

**NEAL PRESERVE
FROM CAUSEWAY PATH
BOARDWALK
TYPICAL SECTIONS**

MANATEE COUNTY, FLORIDA
PUBLIC WORKS DEPARTMENT
ENGINEERING SERVICES
1022 26th Avenue East
Bradenton, FL 34208

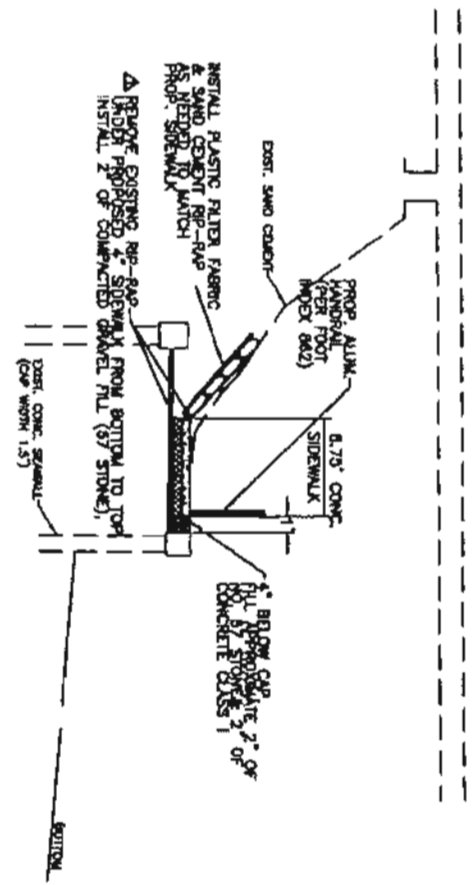


*NOTE: PROPOSED SIDEWALK AND ALUMINUM HANDRAIL TO BE CONSTRUCTED AS PER F.D.O.T. DESIGN STANDARDS, INDEX NO. 882.

AREAS WITHOUT ANCHOR BEAMS

OPTION I

N.T.S.

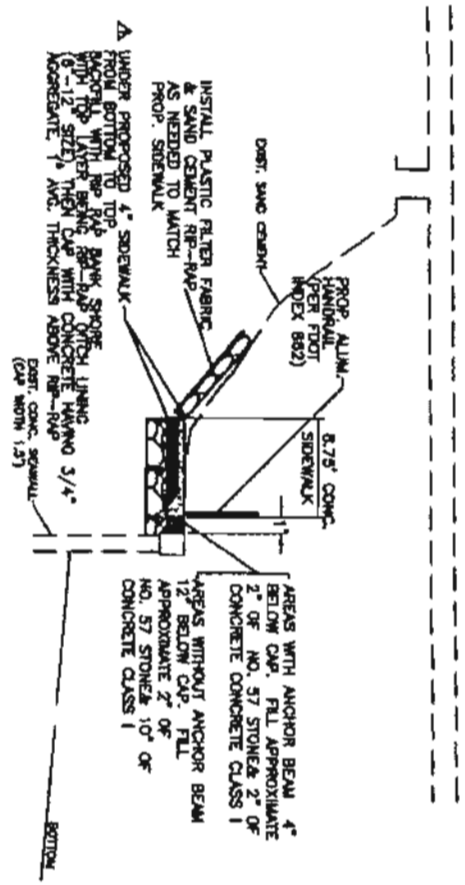


*NOTE: PROPOSED SIDEWALK AND ALUMINUM HANDRAIL TO BE CONSTRUCTED AS PER F.D.O.T. DESIGN STANDARDS, INDEX NO. 882.

AREAS WITH ANCHOR BEAMS

OPTION I

N.T.S.



*NOTE: PROPOSED SIDEWALK AND ALUMINUM HANDRAIL TO BE CONSTRUCTED AS PER F.D.O.T. DESIGN STANDARDS, INDEX NO. 882.

AREAS WITH & WITHOUT ANCHOR BEAMS

OPTION II

N.T.S.

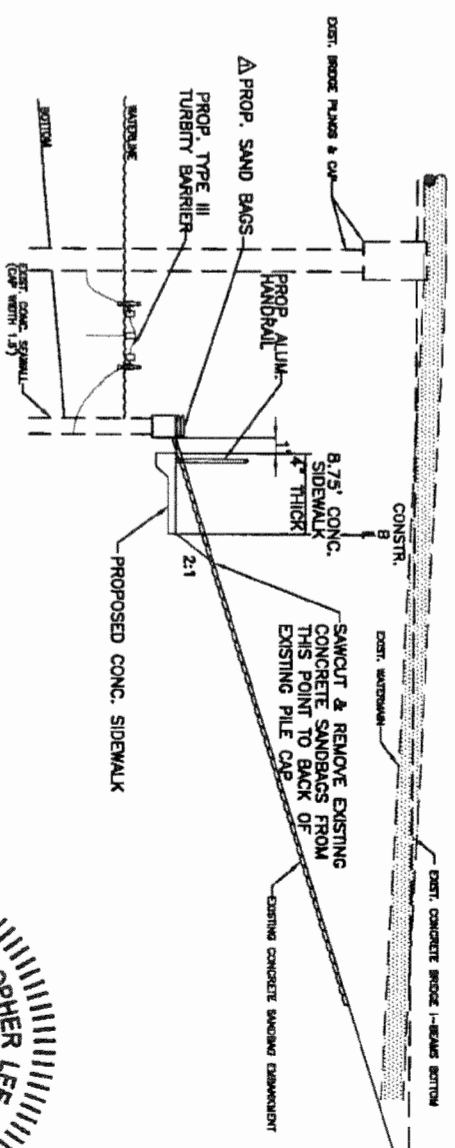
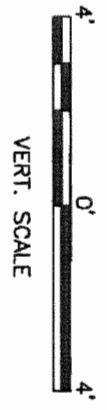
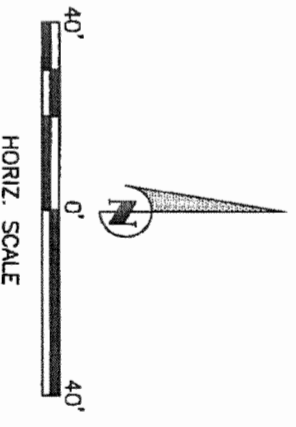
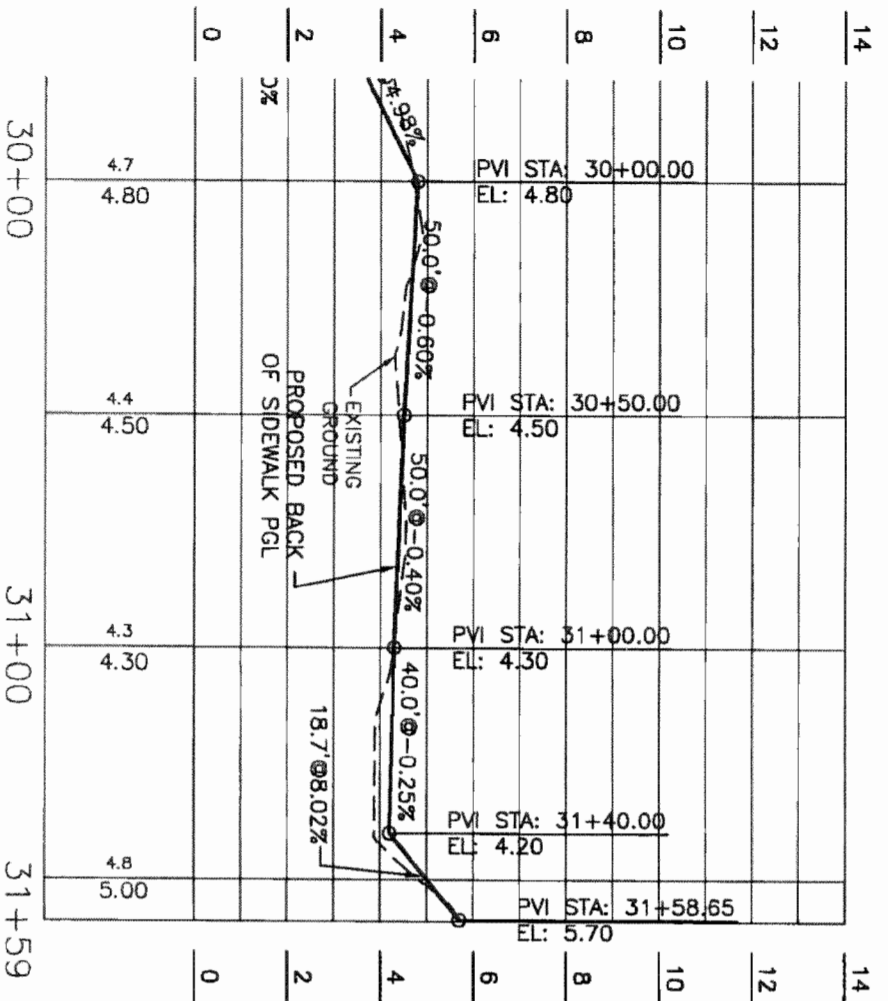
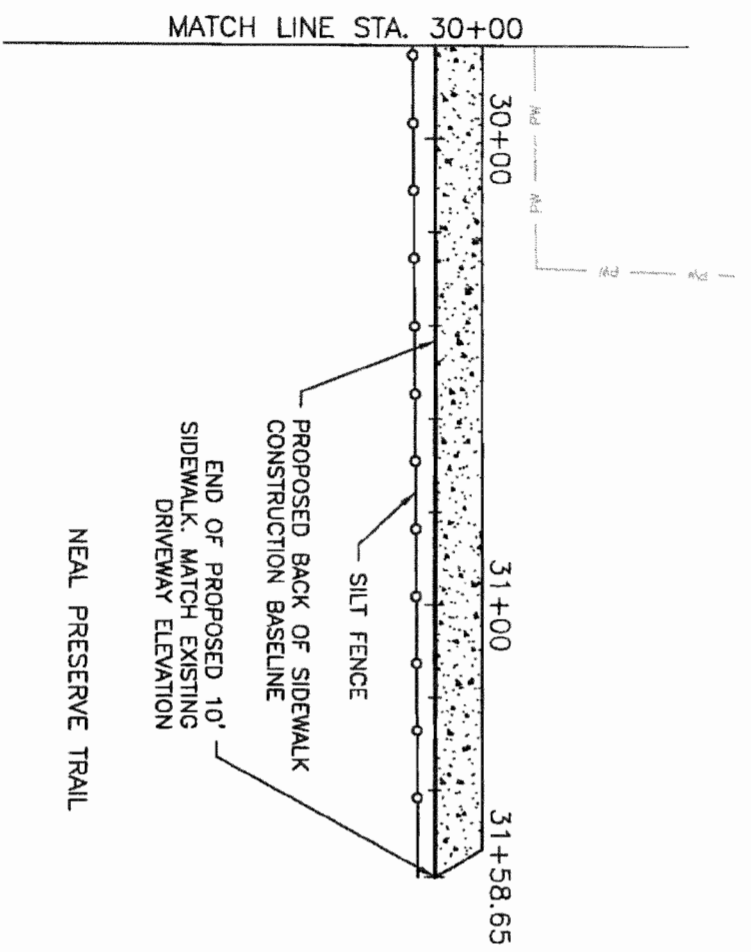


**NEAL PRESERVE
FROM CAUSEWAY PATH
BOARDWALK
TYPICAL SECTIONS-BASE
MATERIAL UNDER THE SIDEWALK**

NO.	REVISION DESCRIPTION	BY	DATE
1	REVISION 1-SLOPE MATERIAL HAS BEEN CHANGED TO CONCRETE CLASS 1	AM	7/11/2013
2	REVISION 2-REVISION 1 HAS BEEN ACCORD TO COMMENTS FROM THE BOARDWALK DESIGNER	AM	7/17/2013

PROJECT #	PU #428133-1
SHEET #	000
SEC./TWN./RGE	28/34S/18E
SCALE	N.T.S.
DATE	
BY	
DESIGNED	AM 08/10/11
CHECKED	CB 08/10/11
DATE	08/10/11
DESIGNED	AM 08/10/11
CHECKED	CB 08/10/11
DATE	08/10/11

C. MOWBRAY P.E.
 FLORIDA P.E. # 48777
 Signature & Date
 SHEET 7A



EROSION CONTROL DETAIL
N.T.S.



NEAL PRESERVE FROM CAUSEWAY PATH BOARDWALK PLAN & PROFILE AND EROSION CONTROL PLAN STA. 30+00 TO 31+58.65

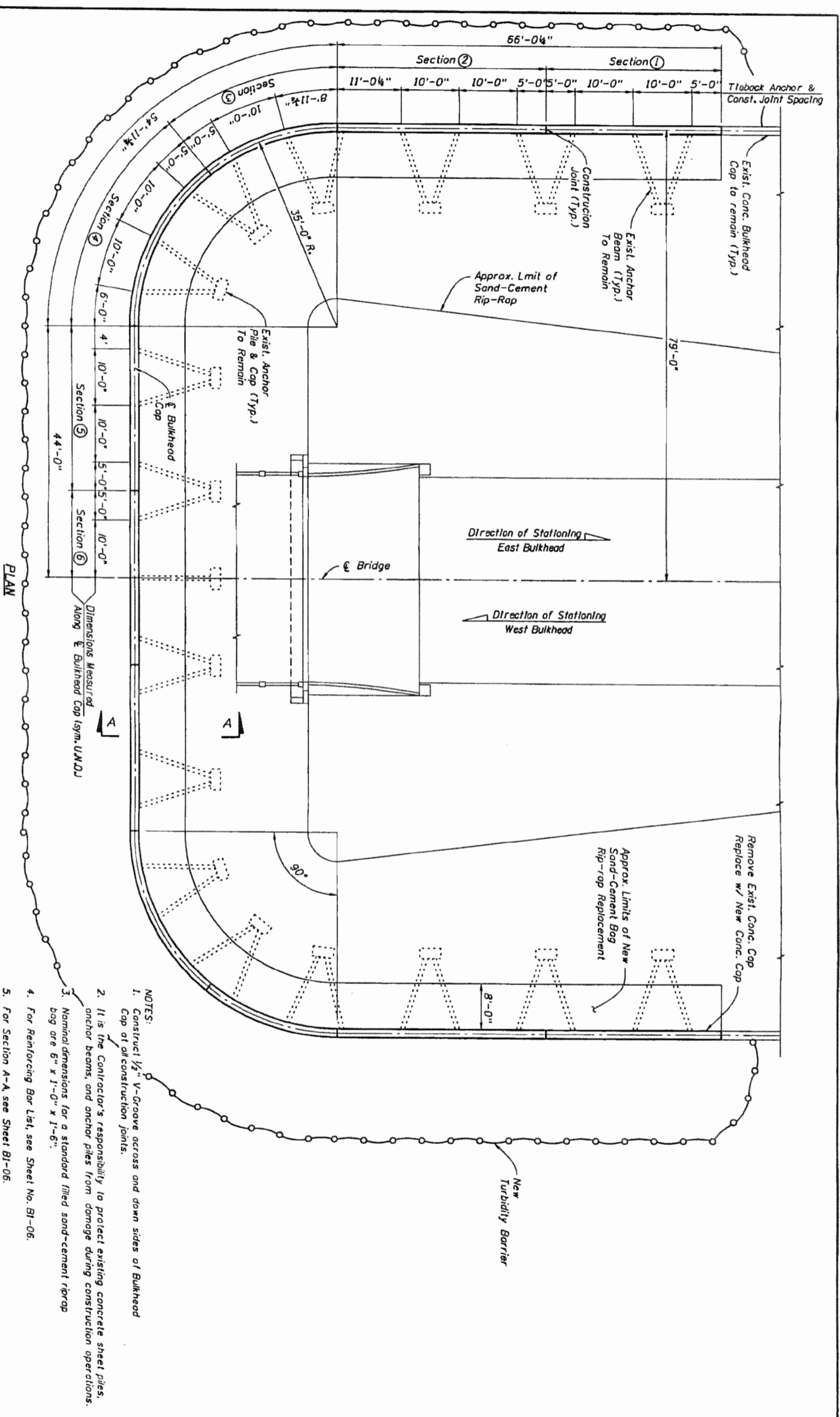


NO.	REVISION DESCRIPTION	BY	DATE
1	ADDENDUM 1 - SAND BAG DETAIL HAS BEEN CHANGED	AM	7/17/2013

PROJECT #	PW #428133-1
SURVEY #	000
SEC./TWN./RGE	28/34S/16E
SCALE	1"=40'H/T=4'V
SURVEYED	09/20/00
DESIGNED	08/10/11
DRAWN	08/10/11
CHECKED	09/20/00

DESIGNED	AM	08/10/11
DRAWN	AM	08/10/11
CHECKED	AM	09/20/00

CHRISTOPHER LEE MOWBRAY P.E.
FLORIDA P.E. # 46777
Signature: *CLM* Date: 7/25/13



- NOTES:**
1. Construct $\frac{1}{2}$ " V-Groove across and down sides of Bulkhead Cap at all construction joints.
 2. It is the Contractor's responsibility to protect existing concrete sheet piles, anchor beams, and anchor piles from damage during construction operations.
 3. Nominal dimensions for a standard filled sand-cement riprap bag are 6" x 1'-0" x 1'-6".
 4. For Reinforcing Bar List, see Sheet No. BI-06.
 5. For Section A-A, see Sheet BI-06.
 6. Install Turbidity Barrier in accordance with Design Standards Index 103.

REVISIONS		REVISIONS	
DATE	BY	DESCRIPTION	DATE

DATE	BY	DESCRIPTION	DATE

DATE	BY	DESCRIPTION	DATE

DATE	BY	DESCRIPTION	DATE

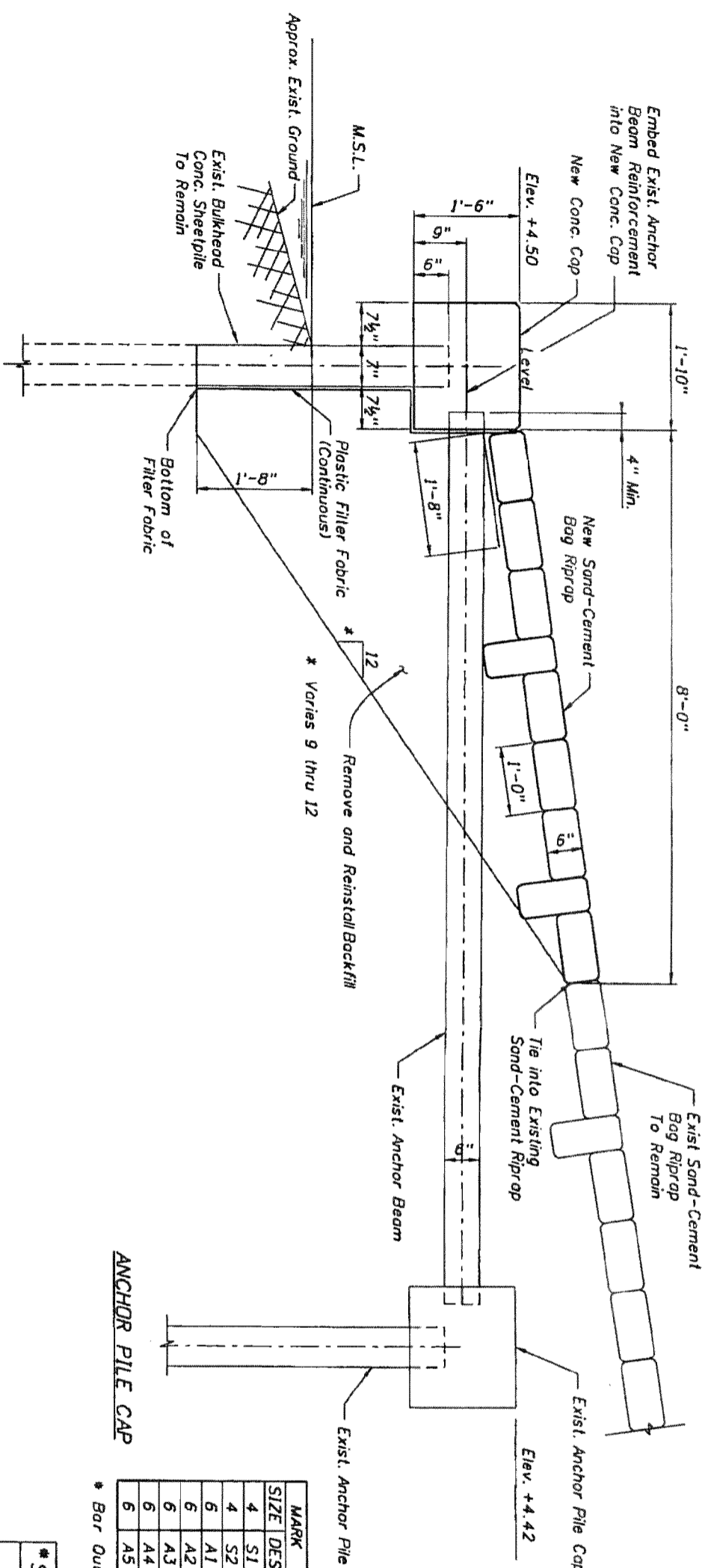
DATE	BY	DESCRIPTION	DATE

DATE	BY	DESCRIPTION	DATE

DATE	BY	DESCRIPTION	DATE

DATE	BY	DESCRIPTION	DATE

DATE	BY	DESCRIPTION	DATE



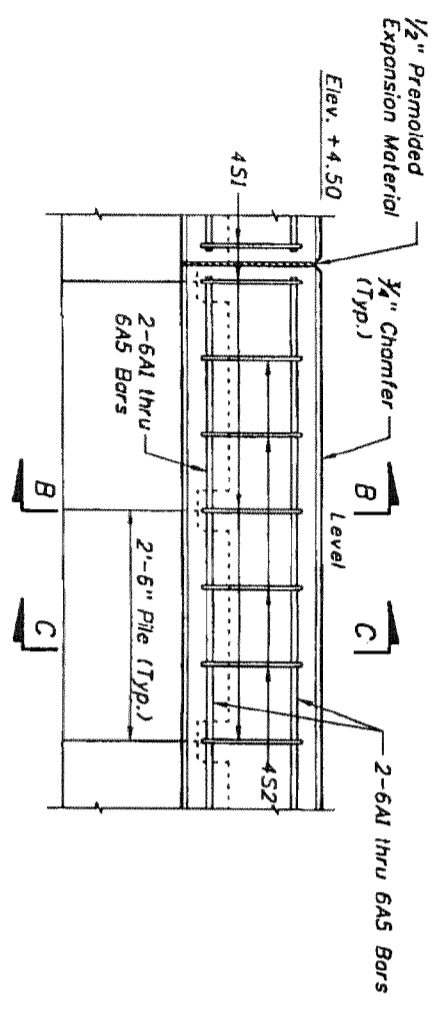
- NOTES:
1. Install Filter Fabric Type D-5 in accordance with Design Standards Index 199.
 2. Existing backfill material may be reused. Supplement additional backfill material as needed.
 3. Protect existing anchor beam and pile cap from damage during replacement of the bulkhead cap.
 4. Excavate backfill prior to removing existing bulkhead cap.

* Bar Quantities for One Bulkhead Only

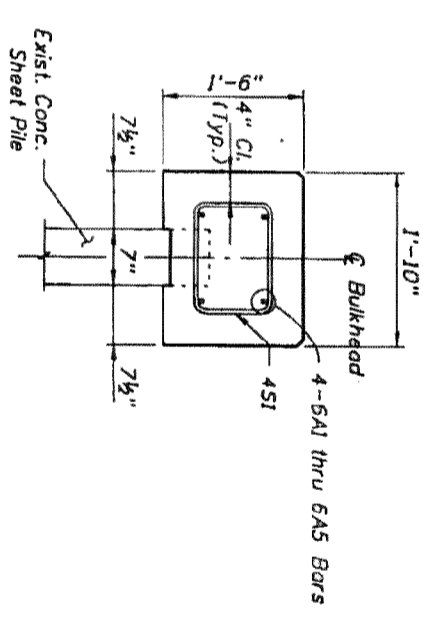
MARK	LENGTH	NO	TYP	STY	B	C	D				
SIZE	DES	FT	IN	BAR	BAR	FT	IN	FR	FT	IN	FR
4	S1	4'-9"		133	4	4	0'-10"		0'-10"		0'-10"
4	S2	2'-10"		264	11		1'-2"		0'-10"		0'-10"
6	A1	29'-8"		12	1		29'-8"				
6	A2	35'-8"		8	1		35'-8"				
6	A3	23'-8"		8	3		23'-8"		35'-0"		
6	A4	30'-8"		8	3		30'-8"		35'-0"		
6	A5	28'-8"		8	1		28'-8"				

BULKHEAD CAP

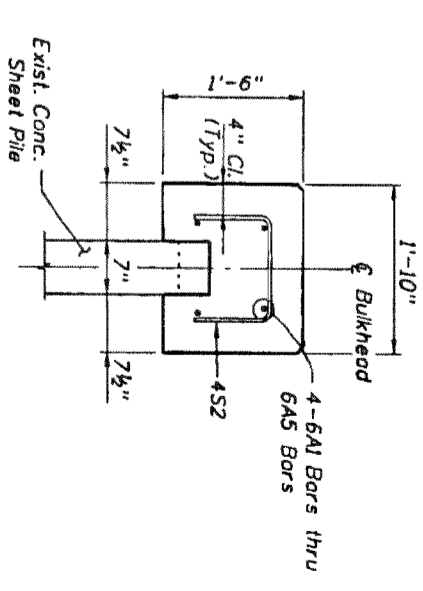
SECTION A-A
(Reinforcing Steel Not Shown for Clarity)



TYPICAL BULKHEAD CAP ELEVATION



SECTION B-B



SECTION C-C

* SUMMARY OF ESTIMATED BULKHEAD QUANTITIES

ITEM	UNIT	QUANTITY
Class IV Concrete (Bulkhead)	C.Y.	30.0
Reinforcing Steel (Bulkhead)	LB.	2,882
Plastic Filter Fabric	S.Y.	293
Sand-Cement Riprap	C.Y.	52.4

* Quantities are for One Bulkhead Only

DATE	BY	DESCRIPTION	DATE	BY	DESCRIPTION

NAME	DATE	ENGINEER OF RECORD
J.H.M.	4/06	GEORGE C. PATTON, P.E.
T.J.F.	8/06	P.E. License No. 45966
G.C.P.	4/06	E.C. DRIVER & ASSOCIATES, INC.
T.J.F.	8/06	500 N. Wenhart Blvd. Suite 500 Tampa, Florida 33609 Certificate of Authorization No. 3838

FLORIDA DEPARTMENT OF TRANSPORTATION	COUNTY	PROJECT NO.	MARKET
ROAD NO. 64	MANATEE	408185-2-52-01	

SHEET TITLE	PROJECT NO.	SHEET NO.
BULKHEAD REPAIR DETAILS - SHEET 2 OF 2	S.R. 64 (ANNA MARIA) BRIDGE REHABILITATION	BI-06