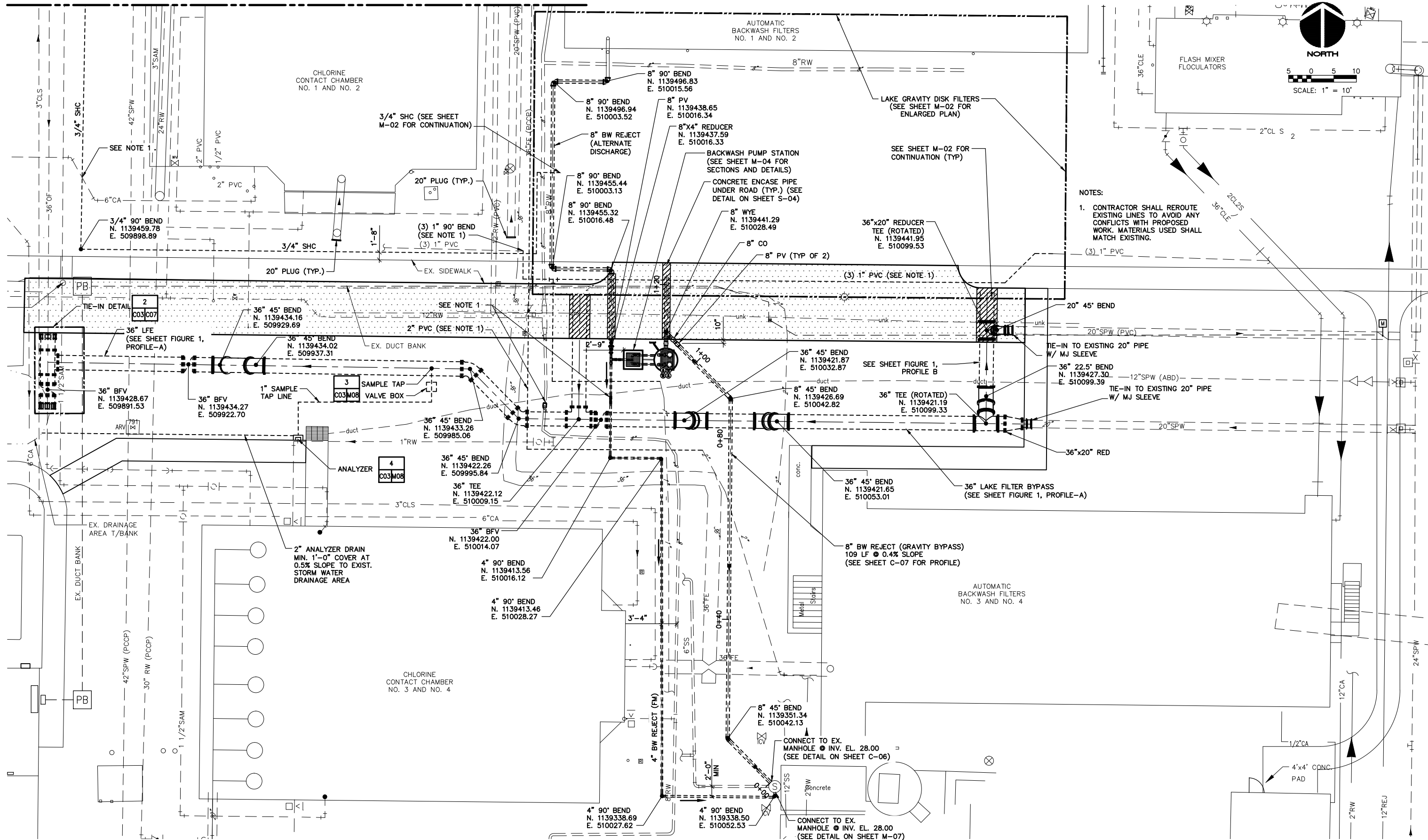


SEE SHEET C-04 FOR CONTINUATION



NOTES:  
1. CONTRACTOR SHALL REROUTE EXISTING LINES TO AVOID ANY CONFLICTS WITH PROPOSED WORK. MATERIALS USED SHALL MATCH EXISTING.

**MANATEE COUNTY**  
SOUTHEAST WRF  
LAKE FILTRATION SYSTEM

**ARCADIS**  
The Water Division of ARCADIS

CERTIFICATE OF AUTHORIZATION NO. 67  
14025 RIVEREDGE DR. SUITE 600  
TAMPA, FLORIDA 33637

BID DOCUMENTS		REVISIONS	
NO.	BY	DATE	REMARKS
A	MC	1/9/2013	ADDENDUM No. 4

DES MC  
DWN MC  
CKD JP

**MANATEE COUNTY**  
**SOUTHEAST WRF**  
**LAKE FILTRATION SYSTEM**

**YARD PIPING PLAN I**

COPYRIGHT © 2011  
MALCOLM PIRNIE, INC.  
THE WATER DIVISION OF ARCADIS

DATE JULY 2012

SHEET **C-03**

CAD REF. NO. 0132008\_C03