



MANATEE COUNTY

June 7, 2012

All Interested Bidders:

SUBJECT: Invitation for Bid #12-1310-OV
SWWRF Lake Filtration System and North Pond Improvements
Bradenton, FL, Manatee County Project No.: 6079180

ADDENDUM #4

Bidders are hereby notified that this Addendum shall be acknowledged on page 00300-1 of the Bid Form and made a part of the above named bidding and contract documents. Bids submitted without acknowledgement of the Addendum will be considered incomplete.

The following items are issued to add to, modify, and clarify the bid and contract documents. These items shall have the same force and effect as the original bidding and contract documents, and cost involved shall be included in the bid prices. Bids to be submitted on the specified bid date, shall conform to the additions and revisions listed herein.

The stated deadline of May 11, 2012 to submit all inquiries concerning interpretation, clarification or additional information pertaining to this bid has lapsed. This deadline has been established to maintain fair treatment for all potential bidders, while maintaining the expedited nature of the Economic Stimulus that the contracting of this work may achieve.

Bidders Note:

Attached memorandum dated June 4, 2012 from McKim & Creed is issued to respond to questions received from Contractors at the Pre-Bid / Information Conference held on April 30, 2012 and questions received via email from Contractors. (14 Total Pages)

Additional attachments include revised drawings, revised Bid Forms (Bid A and Bid B) and revised Measurement and Payment Section 01150-1 through 01150-10.

Financial Management Department – Purchasing Division
1112 Manatee Avenue West, Suite 803, Bradenton, FL 34205
Phone: 941-749-3055 – Fax: 941-749-3034

LARRY BUSTLE * MICHAEL GALLAN * JOHN R. CHAPPIE * ROBIN DISABATINO * DONNA G. HAYES * CAROL WHITMORE * JOE McCLASH
District 1 District 2 District 3 District 4 District 5 District 6 District 7

Attached Drawings: (12 Total Drawings)

1. Revised Sheet C-0.2, Revision 1 – Proposed Site Plan and Soil Erosion and Sedimentation Control.
2. Revised Sheet C-0.14, Revision 1 – Yard Piping No. 1.
3. Revised Sheet C-1.0, Revision 1 – Overall Grading Plan and Key Sheet
4. Revised Sheet C-1.18, Revision 1 – Pond Sections No. 6
5. Sheet M-5, Middle Pond Control Structure Plan and Sections
Dated 3/18/02
6. SWWF Lake Filtration & North Pond Improvements – Staging Areas
7. Pond Fill Excavation Location – Figure 1
8. Revised M-4.4, Revision 1 – Unfiltered Pump Station
9. SK-S1 through SK-S4 dated 05/16/2012, Addenda UFPS Pipe Support Information

Bidders – DELETE: Specification Section 01150 Measurement and Payment which were a part of the original Invitation for Bid.

REPLACE: Section 01150 Measurement and Payment, Revision 1, which are made a part of this Addendum #4. (10 Total Pages)

Bidders: - DELETE: Bid Forms “A” and “B”, Section 00300-2 through 00300-5 which were a part of the original Invitation for Bid.

REPLACE: Bid Forms “A” and “B”, Section 00300-2 through 00300-5, which are made a part of this Addendum #4. (4 Total Pages)

Note: Bidders shall utilize the **REVISED** Bid Forms, Addendum #4 when submitting your Bid for this project.

Section 00020 (Page 00020-1) – Basis of Award: - Article B.01 Basis of Award:

DELETE:

Award shall be to the most responsive, responsible bidder meeting specifications and having the lowest **Total Base Bid Price for Bid "A"**, or the lowest **Total Base Bid Price for Bid "B"**,.....

REPLACE:

Award shall be to the responsive, responsible bidder meeting specifications and having the lowest **Total Base Bid and / OR a combination of the Bid Alternates for Bid "A" OR Bid "B"**. Only one (1) award shall be made. The County has the sole authority to select the Base Bid and / OR combination of the Bid Alternates based on the Completion Time which is in the best interest of the County.

If you have submitted a bid prior to receiving this addendum, you may request in writing that your original, sealed bid be returned to your firm. All sealed bids received will be opened on the date stated.

END OF ADDENDUM #4

Bids will be received at the **Manatee County Purchasing Division, 1112 Manatee Avenue West, Suite 803, Bradenton, FL 34205 (note new date and time) until 11:00 A.M. on June 20, 2012.**

Sincerely,



Melissa M. Wendel, CPPO, Purchasing Official
Manatee County Purchasing Division

/OV (40 Total Pages Attached)

Financial Management Department – Purchasing Division
1112 Manatee Avenue West, Suite 803, Bradenton, FL 34205
Phone: 941-749-3055 – Fax: 941-749-3034

To All Bidders,

**Subject: Invitation for Bid #12-1310-OV
SWWRF Lake Filtration System and North Pond Improvements
Bradenton, FL / Manatee County Project No.: 6079180**

Addendum No. 4**June 4, 2012**

The following items are issued to modify and clarify the bid and contract documents. These items shall have the same force and effects as the original bidding and contract documents, and costs involved shall be included in the bid prices. Bids to be submitted on the specified bid date shall conform to the additions and revisions listed herein.

PART I – PERTAINING TO THE DRAWINGS

1. SHEET C-0.2 PROPOSED SITE PLAN AND SOIL EROSION AND SEDIMENTATION CONTROL: Remove Sheet C-0.2 of the Contract Drawings and replace with the attached Sheet C-0.2, Revision 1.
2. SHEET C-0.14 YARD PIPING No. 1: Remove Sheet C-0.14 of the Contract Drawings and replace with the attached Sheet C-0.14, Revision 1.
3. SHEET C-1.0 OVERALL GRADING SHEET AND KEY SHEET: Remove Sheet C-1.0 of the Contract Drawings and replace with the attached Sheet C-1.0, Revision 1.
4. SHEET C-1.18 POND SECTIONS No. 6: Remove Sheet C-1.18 of the Contract Drawings and replace with the attached Sheet C-1.18, Revision 1.
5. SHEET S-1.2 GRAVITY DISK FILTER FOUNDATION PLAN, SECTIONS AND DETAILS: Aluminum Ladder assembly similar to Section 11.S-2.2. Space the 3/8" bent plate support brackets at 4'-0" o.c. (max.).
6. SHEET S-1.4 DISCHARGE STRUCTURE PLAN, SECTION AND DETAILS: Energy Dissipation Blocks detail, reinforcing and anchor reinforcing to the slab-on-grade similar to Detail 5.S-5.2.
7. SHEET S-2.1 GRAVITY DISK FILTER FOUNDATION PLAN, SECTIONS AND DETAILS:
 - Section 2.S-2.1 slab-on-grade reinforcing is #5 bars spa. @ 6" o.c.
 - Section 8.S-2.1 the 3/8" thk aluminum connection plate to reference Detail 7.S-2.1.
8. SHEET S-2.2 GRAVITY DISK FILTER FOUNDATION AND FRAMING ADDITIONAL SECTIONS AND DETAILS:
 - Section 5.S-2.2 & Plan 1.S-2.1 each stair landing to have x-bracing between all (4) columns supporting the landing.

- Section 9.S-2.2 the 3/8" thk aluminum tab connection plate to reference Detail 8.S-2.2.
 - Section 11.S-2.2 the t.o. grating for the assembly is 7'-7" (25.78'). Ladder rungs to be evenly spaced & not to exceed 1'-0". Space the 3/8" bent plate support brackets at 4'-0" o.c. (max.).
9. SHEET S-3.1 RECLAIM WATER PUMP STATION TOP PLAN, SECTIONS AND DETAILS:
 - Plan 1.S-3.1 provide #4 dowels 3'-0" long spa. @ 1'-4" o.c. @ mid-depth of the slab at the "CJ" between the (2) slab sections. Embed the dowel 1'-6" in each slab section.
 - Plan 1.S-3.1 provide (2) #4 radially bent bars at the slab edge around the Wet Well. These bars are to be at mid-depth of the slab-on-grade & spaced @ 4" o.c.
 - Section 2.S-3.1 space the #4 "z"-bars at 1'-4" o.c.
 - Reference SK-S5 for reinforcing around pipe penetrations through the slab-on-grade.
 10. SHEET S-5.1 EFFLUENT PUMP STATION PLAN, SECTIONS AND DETAILS:
 - Plan 1.S-5.1 provide #4 dowels 3'-0" long spa. @ 1'-4" o.c. @ mid-depth of the slab at the "CJ" between the (2) slab sections. Embed the dowel 1'-6" in each slab section.
 - Section 2.S-5.1 space the #4 "z"-bars at 1'-4" o.c.
 - Reference SK-S5 for reinforcing around pipe penetrations through the slab-on-grade.
 11. SHEET M-4.4 UNFILTERED PUMP STATION: Remove Sheet M-4.4 of the Contract Drawings and replace with the attached Sheet M-4.4, Revision 1.
 12. SHEET E-0.4 ELECTRICAL BLD No. 1 LAKE FILTER BACKWSH P.S. SINGLE LINE DIAGRAMS: Delete 3-500 KCMIL, 1/0 G, 4"C and replace with correct wire call out 3#6, 1 #8G, in cable tray or 2" C is also tagged to the line between PP-301 and the 60 A breaker in PP-302.

PART II – PERTAINING TO THE SPECIFICATIONS

1. SECTION 01150 MEASUREMENT AND PAYMENT: Delete Section 01150 and replace and replace with the attached Section 01150, Revision 1.
2. SECTION 02960 RECLAIMED AND REJECT POND LINERS (1.05)(B): Delete "20 years of installation." and replace with "5 years of installation".
3. SECTION 13300 INSTRUMENTATION AND CONTROLS, GENERAL REQUIREMENTS (1.07)(C)(3): Delete, "3. Project bonding capacity of two million dollars (\$2,000,000)"
4. SECTION 16483 VARIABLE FREQUENCY DRIVES (2.02)(B)(1): Add to the end as follows: **Refer also to Harmonic Mitigation Requirements in this specification.**
5. SECTION 16483 VARIABLE FREQUENCY DRIVES (2.06)(A): Delete: "A. The AC Drive shall be provided with a line reactor mounted inside the enclosure." and

replace with "A. The AC Drive shall be a 12 pulse low harmonic design utilizing an input transformer mounted inside the enclosure."

PART III – CLARIFICATIONS TO BIDDER QUESTIONS

GENERAL:

1. Question: Will a contract be awarded if the cost of imported fill increases the cost of the project over the budget?

Response: Award of contract will be at the discretion of the Owner.

2. Question: Can manufacturers be added to the Contract Documents as an approved or equal?

Response: "Or equals" will be evaluated after the award of the bid.

SHEET C-0.6 CIVIL DETAILS No. 1:

3. Question: Can the middle pond and south pond be emptied during some portion of the job to change the intake screens and make specified modifications if coordinated with the plant operations?

Response: The Middle Pond and South Pond are influenced by groundwater and cannot be completely emptied by the Owner. The means and method for the installation of the grating shall be determined by the Contractor.

SHEET C-0.7 CIVIL DETAILS No. 2:

4. Question: Please provide a detail of the Middle Pond Gate Structure that will show a cross section from north to south in addition to the east to west cross section provided on Sheet C-0.7. The structure has a concrete wall above the top of the structure and the SG are located in the center of the structure. Is there an existing concrete wall inside the structure that the SG are mounted to?

Response: See Record Drawing Sheet M-5 Middle Pond Control Structure Plan And Sections dated 3/18/02 attached.

5. Question: How many influent and effluent pipes are connected to the Middle Pond Gate Structure and what size and type are they?

Response: See Record Drawing Sheet M-5 Middle Pond Control Structure Plan And Sections dated 3/18/02 attached.

6. Question: Plan Sheet C-1.7, concrete steps per F.D.O.T. Index 521, are we to include handrailing with these concrete steps? The modified detail does not show handrails.

Response: No handrail is to be provided in accordance with the detail on Sheet C-0.7.

SHEET C-0.12 CIVIL DETAILS No. 7:

7. Question: Sheet C-0.12 shows a gas vent detail, however, no vents are shown on the plan view of the ponds. Are vents required and if so what is the spacing between vents? The same detail references 60 mil PVC Primary Liner - is it correct to assume that this should be 60 mil HDPE geomembrane?

Response: The liner shall be 60 MIL HDPE. Gas vents shall be supplied every 50 feet. Final arrangement shall be determined during construction.

SHEET C-0.14 YARD PIPING No. 1:

8. Question: Please check the proposed piping configuration for the connections on the north side of the project (Sheet C-0.14) as it appears some of the pipe and fittings sizes are mislabeled and the tie-ins for the 24" RCW should be modified.

Response: See Sheet C-0.14, Revision 1 attached. Note that there is approximately 280 feet of proposed 30-inch RCW not shown between Drawings C-0.14 and C-0.20 to be provided under this contract at centerline elevation of 12.5. No utility conflicts are known in this area.

SHEET C-0.20 YARD PIPING No. 7:

9. Question: Sheet C-0.20 - At STA - 110+13, 61RT it says to connect to existing and shows the 24" RCW as existing to 110+50. However, detail 110+50 on Sheet C-1.14 it calls for the piping to be new from the tee to outfall assembly. Please clarify.

Response: The Contractor will provide new piping connecting to the existing 24-inch 90° Bend below grade on the north side of the existing assembly.

SHEET C-1.0 OVERALL GRADING PLAN AND KEY SHEET:

10. Question: The match lines between drawing Sheets C-1.1, C-1.2 & C-1.7 appear to have been omitted an area within the Reject Pond. Anyone attempting to perform a 60 mil smooth HDPE geomembrane takeoff for this area, utilizing these sheets will come up short on quantities.

Response: The entire pond is shown to scale on Sheet C-1.0, Revision 1.

SHEET C-1.2 GRADING PLAN No. 2:

11. Question: What is the size and length of the piping to be installed between the Reject Pond and the Lined North Pond? Please verify the stationing for the 2 locations for the pipe installation?

Response: Final stationing will be determined during construction. Each overflow assembly consists of four (4) reinforced concrete elliptical pipes (14" x 23") and is 25-feet in length.

SHEET C-1.12 TYPICAL POND SECTION No. 2:

12. Question: Sheet C-1.12 for the Middle Berm Top shows the pond liners being installed in an anchor trench that is 4 ft wide for a berm that is approximately 875 lf in length. To install the material in this manor will require the material to be installed by hand unless equipment can be utilized on top of the liner for backfilling and installation of the 4 ft wide # 57 Stone path. What is the acceptable tolerance for surface loading by the engineer as to loading on the new HDPE Liner in this area or can the detail be modified to allow easier installation?

Response: Tolerance for surface loading shall be per liner manufacturer's recommendation.

13. Please provide a detail of the HDPE Liner anchor trench for the overflow piping locations.

Response: Anchor shall be per Batten Bar To Concrete Detail on Sheet C-0.12.

14. Question: Around the pond the plans are showing an 8" toe drain. We did not find a specification reference describing this pipe material, especially an indication of the perforations in the pipe. Could you please provide a description of what pipe is required and the perforation pattern?

Response: Sheet C-0.12 shows a detail of the toe drain - calling out 8" perforated PVC pipe surrounded by stone and geotextile fabric. The filter fabric labeled in the detail is acceptable. Below are FDOT standard specifications for the pipe, perforations and aggregate: PVC toe drain pipe shall conform to the requirements of ASTM F-758 or ASTM F-949. Perforations shall be in accordance with AASHTO M-36 or AASHTO M-196. Course filter aggregate shall be FDOT size 5 (1 inch to 1/2 inch), FDOT size 56 (1 inch to 3/8 inch), OR FDOT size 6 (3/4 inch to 3/8 inch) per FDOT standard specifications section 901.

15. Question: Can the detail for the center berm anchor trench be modified wide enough for equipment to be used for backfill and compaction of the trench

Response: Construct per plan.

16. Question: Plan Sheet C-1.12, reference the "TYPICAL MIDDLE BERM SECTION", the note at the bottom of the section that states "EXCAVATE 24" MINIMUM BELOW PROPOSED BERM FACE", are we to excavate 24" below the entire width of the berm prior to placing the berm fill? I do not understand the intent of this note, please clarify.

Response: The top 24" shall be excavated from the existing pond bottom, interior berm face, berm top, and exterior berm face as called out in the plans in accordance with Sheet C-1.12. All clays, fines, large stones, organics, and unsuitable fill material shall be removed from the site. The exposed subgrade shall be compacted to 98% density based on AASHTO T-180 prior to placement of fill as called out in the plans.

SHEET C-0.14 YARD PIPING No. 1:

17. Question: Sheet C-0.14 includes a note that requires all buried pipe, fittings, and valves shall have restrained joints. Sheet C-0.10 includes a table showing required restrained joint pipe lengths from various types of fittings. Please confirm that all joints are to be restrained.

Response: All joints shall be restrained in accordance with Sheet C-0.14.

SHEET S-2.2 GRAVITY DISK FILTER FOUNDATION AND FRAMING ADDITIONAL SECTIONS AND DETAILS:

18. Question: Sheet S-2.2 has a note calling out "AL LADDER ASSEMBLY (TYP. 3 PLCS.)", but there are only two ladders shown on the drawing. Please confirm two access ladders are to be provided for the walkway.

Response: There are 2 access ladders required.

SHEET M-2.1 GRAVITY DISK FILTER PLAN:

19. Question: Sheet M-2.1 – The 4" RCW line is shown to be PVC pipe, however the pipe schedule calls for four inch and larger to be DIP, and 3" inch and smaller to be PVC. Please clarify.

Response: Supply DI 4" RCW line in accordance with Section 15050.

20. Question: Please provide specification for the Sch. 40 PVC pipe for the drain piping.

Response: Supply Sch. 40 drain pipe meeting the County standard specification for gravity systems in accordance with Sheet M-2.1.

SHEET M-3.1 RECLAIM PUMP STATION PLAN AND SECTIONS:

21. Question: Is it permissible to change the size of the base slab for the 12' Diameter wet well as long as the wet well is designed to pass anti-flotation calculations by a Florida P.E. with the water table based on finished grade elevation and that this documentation is provided during the submittal process? The reason for this question is that the current design has the base slab portion alone weighing at approximately 120,000 lbs.

Response: In accordance with Note 1 on Sheet M-3.1, the Contractor shall submit a wet well design signed and sealed by a PE licensed in the State of Florida meeting the given design requirements including floatation calculations during the shop drawing process. Alternate designs may be considered at that time. As there is no guarantee that any alternate will be approved, the Contractor is advised to bid accordingly.

22. Question: Section C on Sheet M-3.1 and Section A on Sheet M-4.1 notes the grating shall be 316 stainless steel. Specification Section 05533 – Stainless Steel Grating - indicates 304 stainless steel grating is to be provided. Please clarify which class of stainless is desired.

Response: Supply 304 stainless steel grating in accordance with Section 05533.

SHEET M-4.4 UNFILTERED PUMP STATION:

23. Question: Can limits of supply be clearly defined for the Unfiltered PS pumps and 16" Header with Supports stated on Drawing M-4.4?

Response: The Owner will supply five (5) vertical turbine pumps with motors, columns, bowls and support frames, five (5) combo starter panels and one (1) 16-inch multiport header shown at centerline elevation 23.13.

24. Question: Spec section 15100-5 and drawing M-4.4. Are the four 8" FL Check Valves located at the Unfiltered Pump Station new valves and are they to be provided under this contract? Will these valves be air cushioned swing type check valves at this location too? Please clarify the meter size.

Response: Supply four (4) 8-inch FL air cushioned swing check valves in accordance with Section 15100. The transient time strap on meter to be supplied by the Contractor will be installed on a 16-inches diameter DIP in accordance with Sheet M-4.4.

SHEET I-0.2 COMMUNICATION SYSTEM MODIFICATIONS OVERVIEW:

25. Question: Please clarify the following: please furnish the details for the fiber optics cable between the electrical building and reclaimed pump station and please furnish the starting point of the fiber optics cable.

Response: The connectivity of the fiber optic cable is shown on Sheet I-0.2, connecting the Electrical Building PLC cabinet with the new SP-14 North Pond Reclaimed Return Pump Stations and the new SP-15 Lake Gravity Disk Filter Control Panel. The requirements of the fiber optic system are defined as part of Section 13330 starting at Paragraph 2.11.

SHEET E-0.3 ELECTRICAL BUILDING FLOOR PLAN:

26. Question: Sheet E-0.3 all the switch gear with the exception of few items is shown in dark lines. Please advise if the switch gear shown in dark lines is to be furnished under this contract.

Response:

1. Refer to Sheet E-0.4 Single line diagrams for electrical work to be done in Electrical Building No. 1.
2. Refer to Sheet E-0.5 Single Line diagram for Unfiltered Pump station for Power connections to Switchboard No. 11 and Switchboard No. 12.
3. Sheet E-0.3: Specific items related to work to be in this building include the following items in the equipment legend:
 - Item 6: Unit Sub-Station USB-9, Refer to keynote 1 and 3.
 - Item 7: Unit Sub-Station USB-10, Refer to keynote 2 and 3.
 - Item 8: Substation No. 11 Switchboard, Refer to E-0.5

- Item 9: Substation No. 12 Switchboard, Refer to E-0.5
- Item 21: New to be added under this contract
- Item 22: New to be added under this contract
- Item 23: New to be added under this contract

SHEET E-0.4 ELECTRICAL BUILDING No. 1 LAKE FILTER BACKWASH P.S. SINGLE LINE DIAGRAMS:

27. Question: Please furnish the details for the fiber optics cable between the electrical building and reclaimed water pump station. Please furnish the starting point of the fiber optics cable.

Response: Refer to the following: Sheet E-0.2 and Sheet E-0.3

1. Sheet E-0.2 shows fiber optic cable routed in either 2 inch conduit or cable tray from the Reclaim Pump Station Control Panel (SP-14) and the Lake Filter SCADA Panel (SP-15) to Electrical Building No. 1.
2. In Electrical Building No. 1 from the cable tray entry, route both fiber optic cables in one 2 inch conduit to existing SCADA Cabinet SP-1 located as shown on Sheet E-0.3.

28. Question: Sheet E-0.4 Lake Filter and Backwash Pump Station, there is a device shown in N4X SS Enclosure between 15KAVA Transformer and Panel LP02. Please advise what type of device is that and if it is required?

Response:

1. The stainless steel box adjacent to LP-202 is a redundant transformer symbol. Only one 15 KVA transformer is required for LP-202.
2. Transformers feeding panel boards LP-202 and LP-302 shall be Stainless Steel NEMA 4X

29. Question: Sheet E-0.4, Reclaim Pump Station riser diagram, an area light is shown. Sheet E-3.1, Reclaim Pump Station plan has no area light shown. Please advise if light is required? If it is required, where and what type?

Response: Sheet E-3.1, shows a type "P1" pole mounted area light fixture, as shown on Sheet E-0.4, located north of the Reclaim Pump Station check valves.

SECTION 01030 SPECIAL PROJECT PROCEDURES:

30. Question: Please provide a description of critical facilities and tie-ins to assist in construction sequence?

Response: See Section 01030(1.15) Existing Facilities – PLAN OF OPERATIONS for a discussion of critical systems at the SWWRF.

31. Question: What is the status of permits?

Response: The Environmental Resource Permit and the Minor Modification to the Operating Permit for construction of new facilities have been issued by FDEP. The Building Permit is ready for pick up by the Contractor after the award of the bid.

32. Question: What is the cost of the building permits for this project?

Response: The Contractor will need electrical subcontractor, two (2) signed and sealed soil reports and a check for \$134.00 to pick up the Building Permit. Contractor will sign the structural steel certificate and erosion control form at pick up. Contractor should call Manatee County Building Department to confirm all other requirements for pick up and additional fees for inspections.

33. Question: Section 01030 1.08 indicates the owner can designate pipe, valves, fittings, equipment, etc. for salvage. Please clarify which equipment is to be salvaged and turned over to the Owner as part of this contract?

Response: The Contractor will coordinate the salvage of pipe, valves, fittings and equipment during construction.

SECTION 01150 MEASUREMENT AND PAYMENT:

34. Question: How much fish can be anticipated in the North Pond? Bid Item?

Response: The quantity of fish to be removed from the North Pond and disposed by the Contractor is not known at this time. The Contractor shall make his own assessment for the removal and disposal of aquatic life remaining in the pond and include in his base bid price.

35. Question: What is the disposition of the existing rip-rap rock currently on the side slope of the North Pond, does Manatee County want this material or is it up to the contractor to dispose of? Please clarify.

Response: The Contractor must dispose of all rip-rap rock currently on the side slopes of the North Pond.

36. Question: What are the pond volumes for the South Pond and Middle Pond?

Response: The Middle Pond total volume is 54 million gallons with a maximum useable storage capacity of 22 million gallons due to seasonal high groundwater elevations. The South Pond total volume is 164 million gallons with a maximum useable storage capacity of 64 million gallons due to seasonal high groundwater elevations.

37. Question: When we remove the top 24" from the North Pond berm and bottom soils to separate and storage of suitable and unsuitable materials, what volume is anticipated to be unsuitable or do we have to assume it is all unsuitable and have to dispose of it?

Response: The Contractor shall review the Contract Documents which includes a geotechnical report for the North Pond and make his own assessment of unsuitable materials.

38. Question: Does the approximately 300,000 CY of fill stated in Spec 01010-1.01 include the replacement of the unsuitable material. Can the volume of unsuitable materials be made into a unit cost since as it is unknown to be fair to the contractors and owner?

Response: The engineer's estimate of 300,000 CY fill quantity is compacted and in place. The Contractor is advised to review the Contract Documents which includes existing pond survey and geotechnical report to make his own evaluation of the quantity of fill required for the project and bid accordingly.

39. Question: It is unclear in the bid documents if sales tax should be included in the Supply and Install price for the geomembrane. Please clarify.

Response: All bid costs shall include applicable sales taxes.

40. Question: What type of loading capacity will be available at the Perico Preserve Excavation Project site?

Response: The loading capacity available at Perico Preserve excavation site is not known at this time. The Perico Preserve Contractor will be required to have enough loading capacity to move the estimated 150,000 CY of fill within an approximated 6 to 9 month construction period under a normal 10 hour working day, 5 days a week. The Lake Filtration Contractor will need to coordinate with the Perico Preserve Contractor on a regular basis. The Lake Filtration Contractor will be provided a project schedule for the completion of the Perico Preserve project. Coordination will be required between both contractors on a weekly basis throughout this duration in order to load the dirt by Perico Preserve Contractor and haul dirt by Lake Filtration Contractor in a timely manner as required by provisions of the contract.

41. Question: Will loading of dirt by the Perico Preserve Contractor and hauling by Lake Filtration Contractor be allowed at night due to traffic concerns? Also, are noise complaints from neighbors are concern?

Response: In an effort to reduce noise complaints and other concerns to adjacent property owners, no hauling will be allowed at night. Operational hours for Perico Preserve Project are anticipated to be between 7 AM and 5 PM, Monday through Friday, with no work on County holidays.

42. Question: Has an FDOT access permit been obtained for the Perico Preserve Project site?

Response: An application for a dedicated access driveway and culvert improvements onto SR 64 will be applied for approximately 100 feet west of the existing driveway.

43. Question: Will there be any required temporary signalization, traffic control, erosion control (i.e. truck wash down, rumble strip) by Perico Preserve Contractor at SR 64 to exit Perico Preserve Project site with fill?

Response: Perico Preserve Contractor will supply the requirements for erosion

control and maintenance of traffic in accordance with FDOT specifications and requirements pertinent to the Perico site.

44. Question: How will the dirt be dewatered and how will it be determined as suitable by Perico Preserve Contractor?

Response: Moisture content of suitable excavated materials at time of loading into receiving vendor's trucks shall not exceed 12% water by volume. The fill will be excavated and, if wet, then allowed to dry within a designated pit area, then hauled to the temporary staging area at the Perico Preserve Project site entrance to be loaded and hauled from the site. The Lake Filtration Contractor will be responsible for achieving moisture content of placed fill material at SWWRF North Pond site in accordance with project specifications and compaction requirements.

45. Question: When does the County expect to know about the permits for the excavation of the Perico Preserve Excavation site?

Response: The status of the Perico Preserve Project permits is not known at this time. The Contractor will coordinate with the Owner during construction as to the availability of the fill at the Perico Preserve Project site.

46. Question: If fill is used from the Perico Preserve Project will the Owner be loading our trucks or will we need to load them as well?

Response: The Contractor of the Perico Preserve Project site will be responsible for loading the Lake Filtration Contractors trucks.

47. Question: Clarifications on bid alternate items (freight costs, reductions, hauling conditions, etc.)?

Response: The purpose of Alternate Bid Item No. 15 is to determine a per cubic yard bid price that quantifies the fuel cost, manpower, equipment cost and any other ancillary requirements associated with hauling fill from the Perico Preserve Project site to the SWWRF. It is assumed that all excavating equipment, dewatering equipment, fill preparation equipment, loading equipment and MOT required at Perico Preserve Project site will be handled by the contractor of the Perico Preserve Project.

The purpose of Alternate Bid Item No. 16 is to determine a per cubic yard bid price deduction that quantifies the fuel cost, manpower, equipment cost and any other ancillary requirements associated with purchasing, loading and hauling that fill from a site of the Contractor's choosing to the SWWRF. It is assumed that all costs associated with unloading, moving, backfilling, manipulating, and MOT at SWWRF are the same for the Contractor regardless of the source of the fill dirt.

SECTION 01310 CONSTRUCTION SCHEDULE & PROJECT RESTRAINT:

48. Question: North Pond availability for modifications?

Response: Weather permitting, the pond will be available for modification shortly after the award of the contract and will remain out of service until after all pond improvements are in place.

49. Question: Is there any dependency on the completion of any portion of the new RCW GST and Modifications to the existing GST which was recently bid?

Response: The tie-ins for the new high service pump station to be installed with the new RCW GST will depend on piping being installed as a part of the Lake Filtration Project. Both contractors shall coordinate during construction to minimize impacts to the MARS system. This coordination shall require that portions of the proposed improvements for the Lake Filtration Project be installed earlier in the project.

SECTION 01410 TESTING & TESTING SERVICES:

50. Question: How much testing required for dewatering?

Response: The quantity of testing that will be required by the FDEP for the dewatering of the North Pond area is not known at this time. See Sheet C-0.2 for further dewatering description. The Contractor shall coordinate with the FDEP to determine the means and methods by which to dewater. The Contractor must include in his base bid price all costs associated with dewatering which includes testing.

51. Question: The specification Section 01410 says that the owner will pay for the services of an independent testing laboratory. Do you know if the contractor will be responsible for any of the testing and how does the owner procure their testing agency, we would like to see if there are opportunities for materials testing for us on this project.

Response: Materials testing shall be in accordance with Section 01410.

SECTION 02211 STEEL SHEET PILES:

52. Question: Are there locations anticipated on this project where permanent sheet piling identified to be left in place?

Response: The use and abandonment of sheet pile shall be in accordance with Section 02211.

SECTION 02960 RECLAIMED WATER AND REJECT POND LINERS:

53. Question: Pond liner inspection and oversight responsibilities?

Response: Pond liner inspection and oversight shall be in accordance with Section 02960.

54. Question: The geomembrane specification references GRI GM 13 as the required standard for the geomembrane, however, the table on 02960-8 is not consistent with the GM 13 standards. Please clarify.

Response: The table on 02960-8 shall take precedence.

55. Question: It is customary that the working week for the installation of the geomembrane is six days a week and ten hours per day. Can we work these hours?

Response: The working week for the installation of the geomembrane may be six days a week and ten hours per day.

SECTION 11291 SLUICE GATES:

56. Question: Please advise us if resilient neoprene seals are acceptable in lieu of the side seals specified in Section 11291, Sluice Gates, 2.01.D.2.

Response: Supply seals in accordance with Section 11291.

SECTION 13300 INSTRUMENTATION AND CONTROLS, SCADA HARDWARE:

57. Question: The specifications state SP-12 is to be modified for the addition of 1 pump. Drawing I-4.2 indicates 3DI and 1DO is required but since this panel is existing is there sufficient spare I/O available to add these signal or will additional I/O cards need to be provided?

Response: There are sufficient input/output points in the existing panel PLC to support the needed modifications. Please note the enclosure door and sunshield will need to be replaced as a part of this modification.

SECTION 15062 DUCTILE IRON PIPE AND FITTINGS:

58. Question: Will AWWA C153 compact ductile iron fittings be allowed for all below ground applications?

Response: Supply fittings in accordance with Section 15062.

59. Question: EPDM gaskets are listed for the buried piping spec section 15062-2 and SBR rubber ring gaskets are listed for the flanged fittings spec section 15062-3. Is this difference in material type the intent of this project or should all gaskets be EPDM?

Response: All gaskets shall be EPDM.

60. Question: Bolts and nuts on flanged fittings shall be Grade B ASTM A-307 cadmium plated spec Section 15062-3. Will zinc plated bolts and nuts be acceptable as they are more commercially available than cadmium? If cadmium plating is required please provide a more detailed specification of this requirement.

Response: Supply bolts and nuts in accordance with Section 15062.

SECTION 15100 VALVES AND APPURTENANCES:

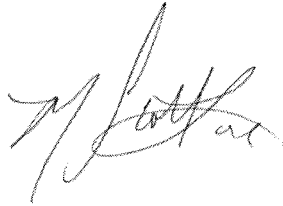
61. Question: Please confirm the Reclaimed Water Pipeline test pressure of 180 PSI will not create warranty issues for valves with working pressure of 150 PSI such as Plug Valves, Check Valves, Air Release Valves, Combination Air Release Valves?

Response: Hydrostatic pressure and leakage tests shall be in accordance with Section 15062.

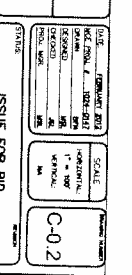
62. Question: Should all the BFVs on this project be considered for Class 250 B in lieu of 150A or B?

Response: Supply butterfly valves in accordance with Section 15100.

Sincerely,
McKIM & CREED, Inc.

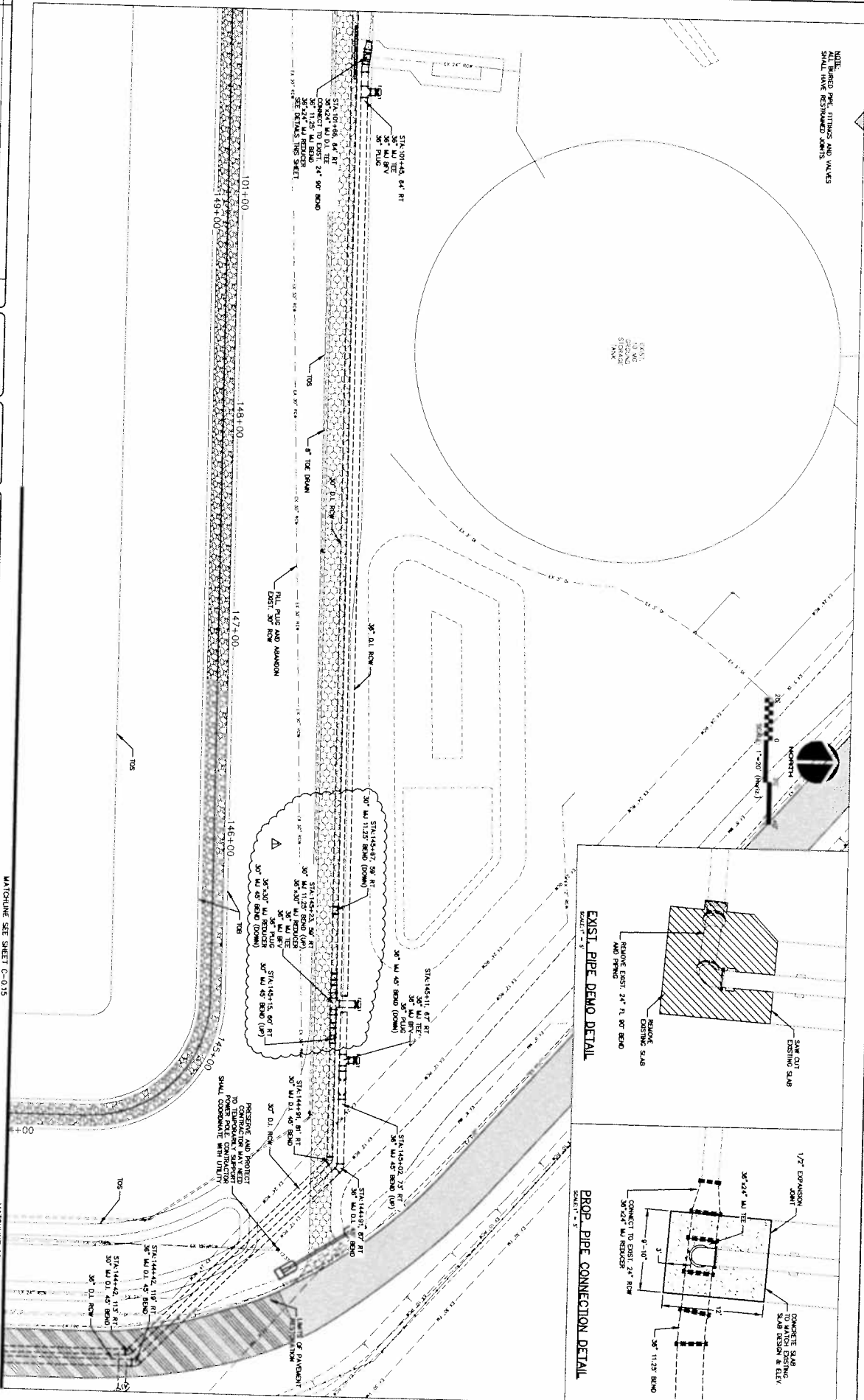
A handwritten signature in black ink, appearing to read 'M. Love', is positioned above the printed name.

Matthew S. Love, P.E.
Project Manager

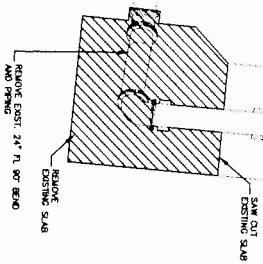


1. TREATING DISCHARGE FLOW RATES SHALL BE RESTRICTED TO 54.5 TO 56.5 GPM DISCHARGE OF SOLIDS OR DISCHARGE CONTROL MEASURES.
2. THE CONTAMINATED SOIL SHALL APPEAR ONLY IN AREAS OF DEPOSITED, SETTLED MATERIAL AND/OR FLOW FROM SOLIDS DISCHARGE. SOIL IN AREAS OF FLOW FROM SOLIDS DISCHARGE, OR FLOW FROM SOLIDS DISCHARGE, SHALL IMMEDIATELY HAVE ADJUSTMENTS TO DRAINAGE AND SHALL REPAIR ANY DAMAGE WITHIN 24 HOURS OF OBSERVATION.

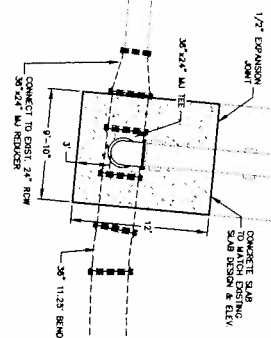
NOTE:
ALL BORED PILE, FITTINGS AND VALVES
SHALL HAVE RESTORED JOINTS



EXIST. PIPE DEMO DETAIL



PROP. PIPE CONNECTION DETAIL



NO.	REVISION	DATE	BY	CHKD.
1	ISSUED FOR APPROVAL	12/15/2014	WJ	WJ

SCALE: 1\"/>

SCALE: 1\"/>

MCKIM & CREED
1565 Orange Avenue, Suite 1700
Orlando, Florida 32809
Phone: (771) 442-7196, Fax: (771) 461-3817
www.mckimandcreed.com

MANATEE COUNTY, FLORIDA

**SWRF LAKE FILTRATION AND
NORTH POND IMPROVEMENTS**

YARD PIPING No. 1

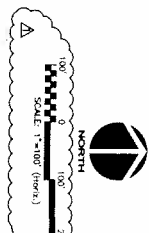
MANHOLE SEE SHEET C-015

MANHOLE SEE SHEET C-021

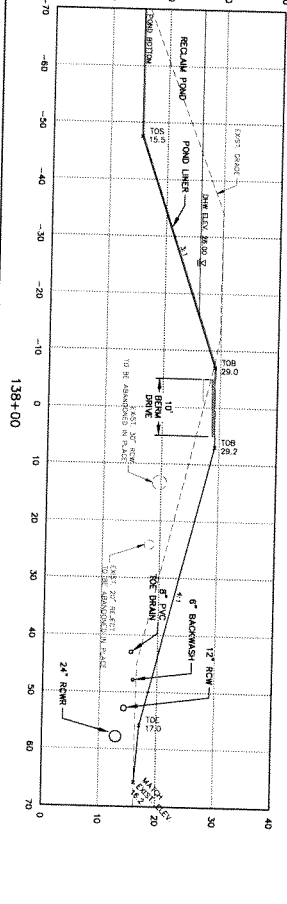
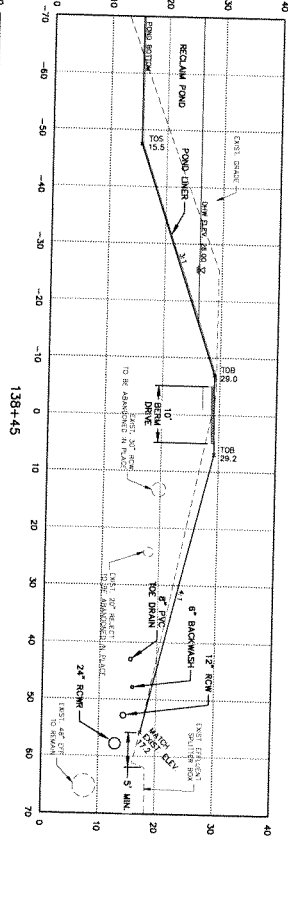
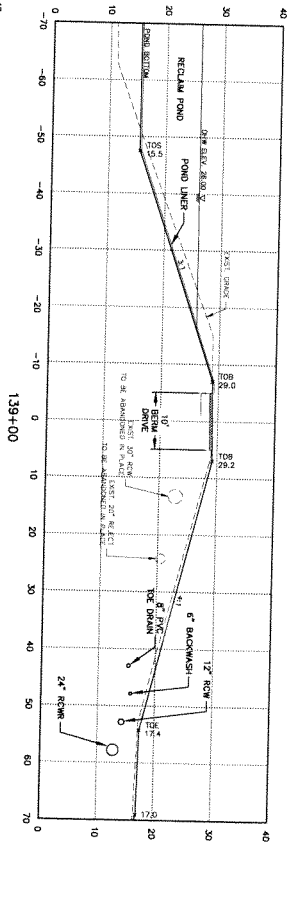
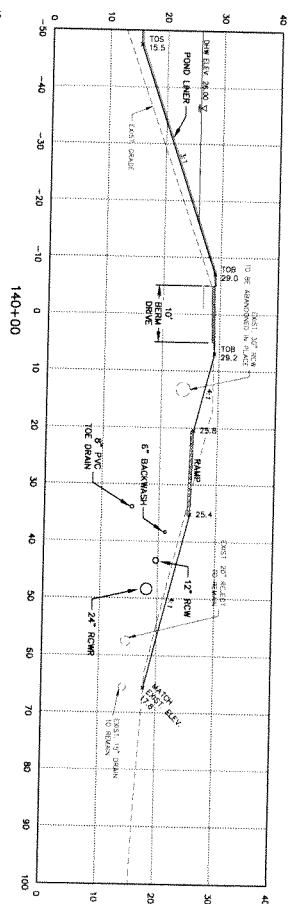
DATE: 12/15/2014
DESIGN: WJ
CHECKED: WJ
SCALE: 1\"/>

C-014

- LIMITS OF MCHM & OREED SURVEY
 PORTIONS OF 66TH STREET
 LOCATED FROM AERIAL MAGREY
 CONTRACTOR TO FIELD VERIFY



PROJECT NO. 1000-012 PROJECT NAME SWMRF LAKE FILTRATION AND NORTH POND IMPROVEMENTS PROJECT LOCATION SWMRF LAKE FILTRATION AND NORTH POND IMPROVEMENTS PROJECT DATE 10/10/2011 PROJECT STATUS ISSUE FOR BID	
DRAWING NO. C-1.0 DRAWING TITLE OVERALL GRADING PLAN AND KEY SHEET DRAWING DATE 10/10/2011 DRAWING STATUS ISSUE FOR BID	
SCALE AS SHOWN SHEET NO. 1 OF 1 SHEET TITLE OVERALL GRADING PLAN AND KEY SHEET	
PROJECT LOCATION SWMRF LAKE FILTRATION AND NORTH POND IMPROVEMENTS PROJECT DATE 10/10/2011 PROJECT STATUS ISSUE FOR BID	
DRAWING NO. C-1.0 DRAWING TITLE OVERALL GRADING PLAN AND KEY SHEET DRAWING DATE 10/10/2011 DRAWING STATUS ISSUE FOR BID	
SCALE AS SHOWN SHEET NO. 1 OF 1 SHEET TITLE OVERALL GRADING PLAN AND KEY SHEET	



DATE	FEBRUARY 2012
MEET PROJ. #	Y04-014
DOMAIN	BN
DESIGNED	BN
CHECKED	BN
PROD. MGR	BN

SCALE
HORIZ. SCALE
V. = 1" = 10'
H. = 1" = 10'

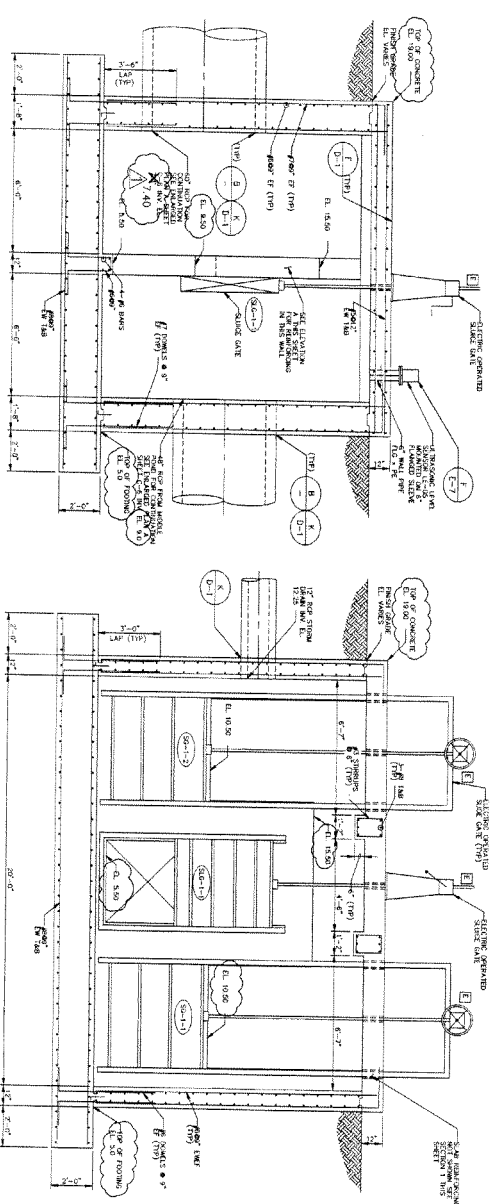
DRAWING NUMBER
C-1.18

PROJECT NO.	27740
MANATEE COUNTY, FLORIDA	
SOUTHWEST REGIONAL WWT	
STORAGE POND IMPROVEMENTS	
MIDDLE POND CONTROL STRUCTURE	
PLAN AND SECTIONS	
DESIGNED BY	BLACK & VEATCH
CHECKED BY	REYNOLDS
APPROVED BY	REYNOLDS
DATE	06/25/98
PROJECT NO.	27740
MANATEE COUNTY, FLORIDA	
SOUTHWEST REGIONAL WWT	
STORAGE POND IMPROVEMENTS	
MIDDLE POND CONTROL STRUCTURE	
PLAN AND SECTIONS	
DESIGNED BY	BLACK & VEATCH
CHECKED BY	REYNOLDS
APPROVED BY	REYNOLDS
DATE	06/25/98

RECORD INFORMATION
DRAWING NO. 27740-1
SHEET 15 OF 23
DATE 07/23/98

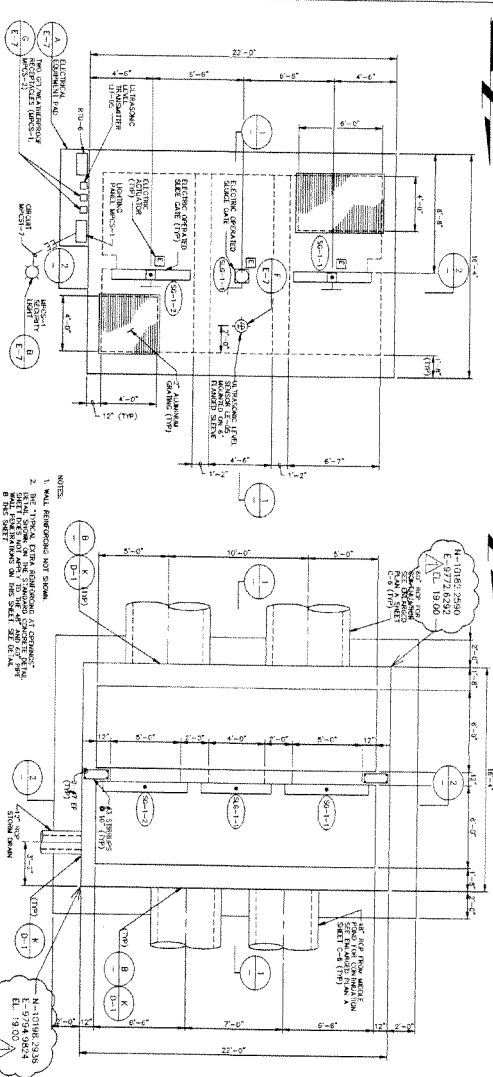
SECTION 1
1/8" = 1'-0"

SECTION 2
1/8" = 1'-0"

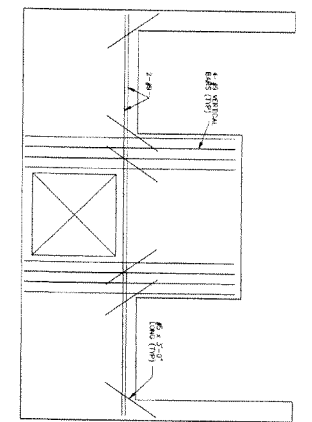


TOP PLAN
1/4" = 1'-0"

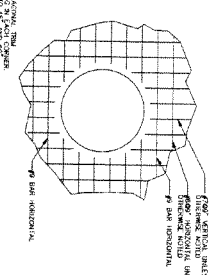
SECTIONAL PLAN
1/4" = 1'-0"



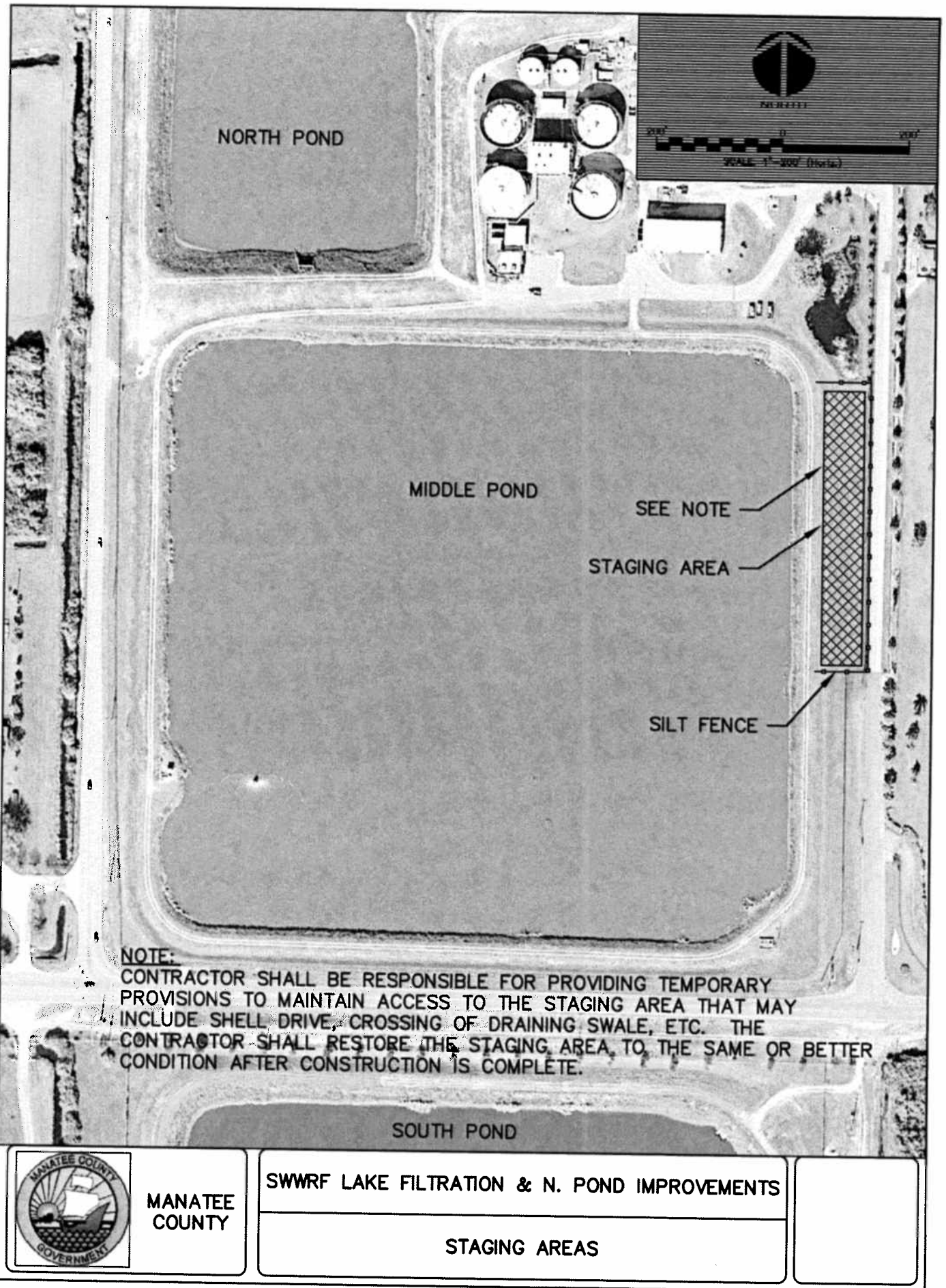
ELEVATION A
1/8" = 1'-0"



REINFORCING AT 48" AND 60" PIPE
WALL PENETRATIONS DETAIL
1/8" = 1'-0"



S:\1024\0147\80-Drawings\Staging Area.dwg, 5/18/2012 10:56:14 AM, Brian Naught



S:\1024\0147\80-Drawings\86-Design\Island.dwg, 3/14/2012 2:15:59 PM, Brian Naught



MANATEE
COUNTY

SWWRF LAKE FILTRATION & N. IMPROVEMENTS
ERP

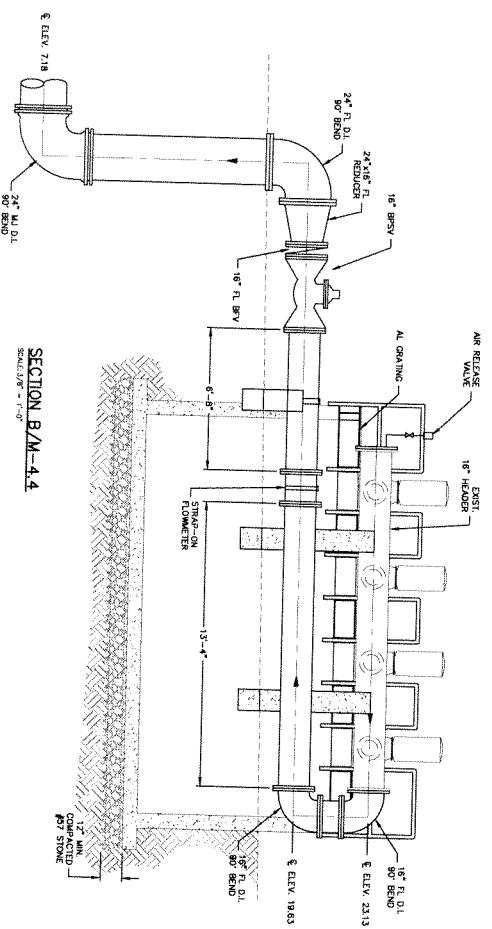
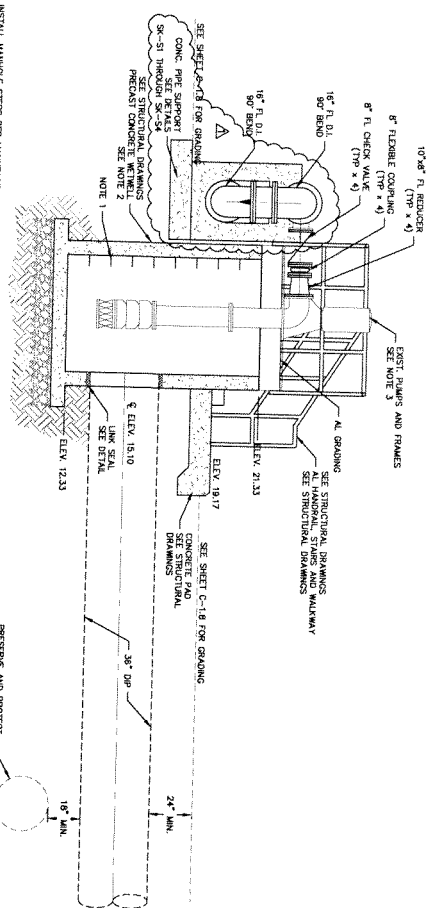
POND FILL EXCAVATION LOCATION

FIGURE 1

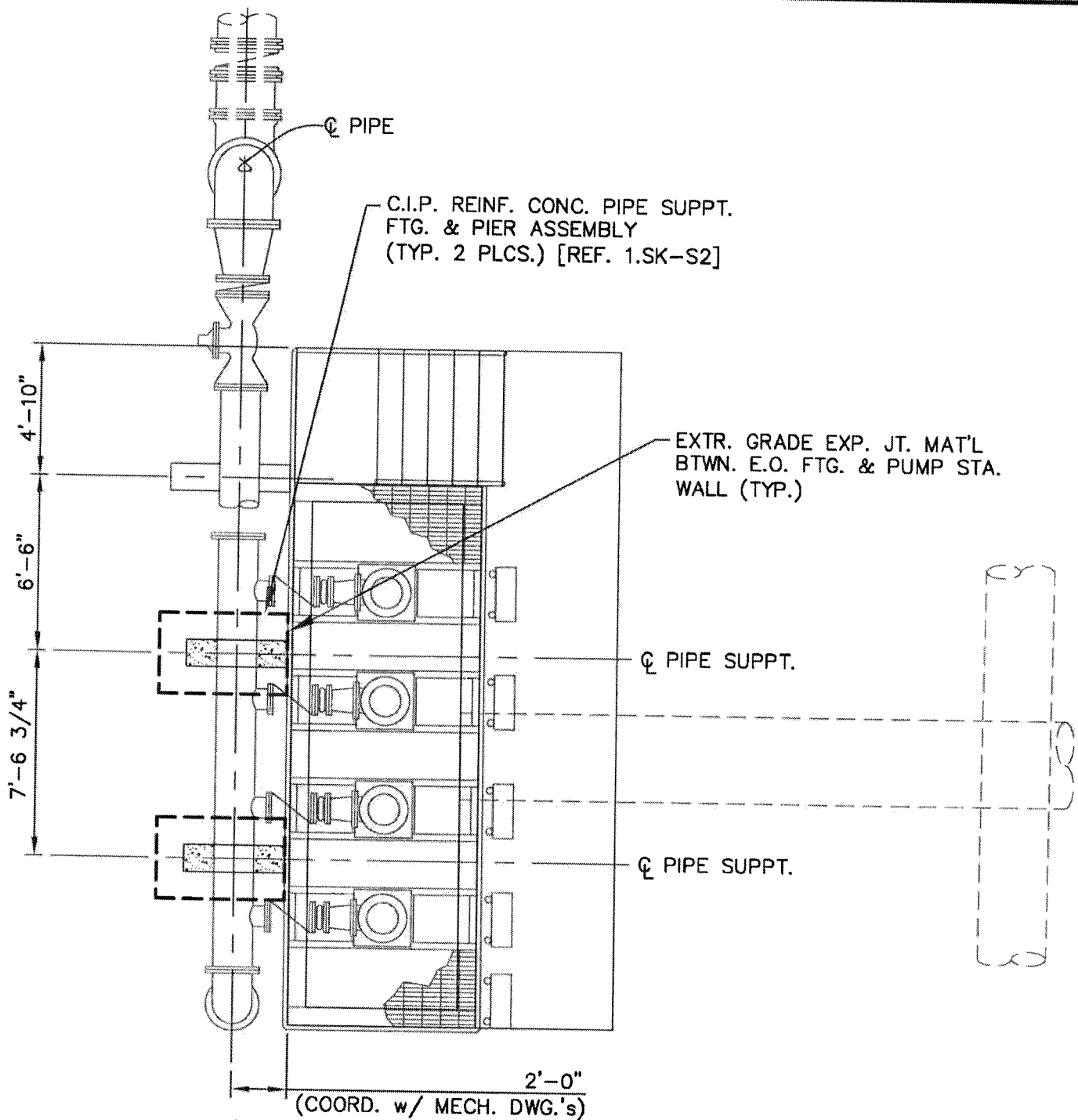


SCALE	DATE	FEBRUARY 2012
	ISS. DATE /	1924-2142
	SIGNATURE	BRN
	DESIGNED	MSL
SCALE	CHECKED	
	PROJ. WORK	MS
<div> <div>SCALE</div> <div>ISSUE FOR BID</div> </div>		

1. NOTES:
 - a. CONTRACTOR SHALL INSTALL MANHOLE STEPS PER MANUFACTURER'S RECOMMENDATIONS AND IN ACCORDANCE WITH AASHTO M 288 STANDARD. MANHOLE STEPS SHALL BE MODEL M-10-18 OR 18" MANHOLE STEPS ACTIVELY BY AMERICAN STEEL CO. INC. OR APPROVED EQUAL.
 - b. PRECAST MANHOLE STEPS SHALL MEET ASTM C248. THE CONTRACTOR SHALL PROVIDE A PROTECTIVE COVER TO THE MANHOLE STEPS PRIOR TO INSTALLATION. SEE SPECIFICATION SECTION 0454.
2. THE COUNTY SHALL PROVIDE PUMPS, PUMP SUPPORT FRAMES AND MANHOLE TURBINE PUMPS FROM A COUNTY LENGTH OF 150.00' TO BENTON'S PUMP INC. SHALL COORDINATE MODIFICATION WITH BENTON'S PUMP INC.
3. PUMPS SHALL BE MANUAL PUMP MODEL 12340-1-1 STAGE.



SECTION A/M-4.4
SCALE: 3/8" = 1'-0"



1 - PLAN - PIPE SUPPT. LAYOUT

SCALE: 3/16"=1'-0"

NOTES:

1. COORDINATE THESE SKETCHES ASSOCIATED w/ THIS ADDENDA INFORMATION w/ THE "ISSUE FOR BID" CONSTRUCTION DRAWINGS.



McKIM & CREED

1365 Hamlet Avenue
Clearwater, Florida 33756
Phone: (727) 442-7196 Fax: (727) 461-3827
www.mckimcreed.com

ADDENDA - UFPS PIPE SUPPORT INFORMATION

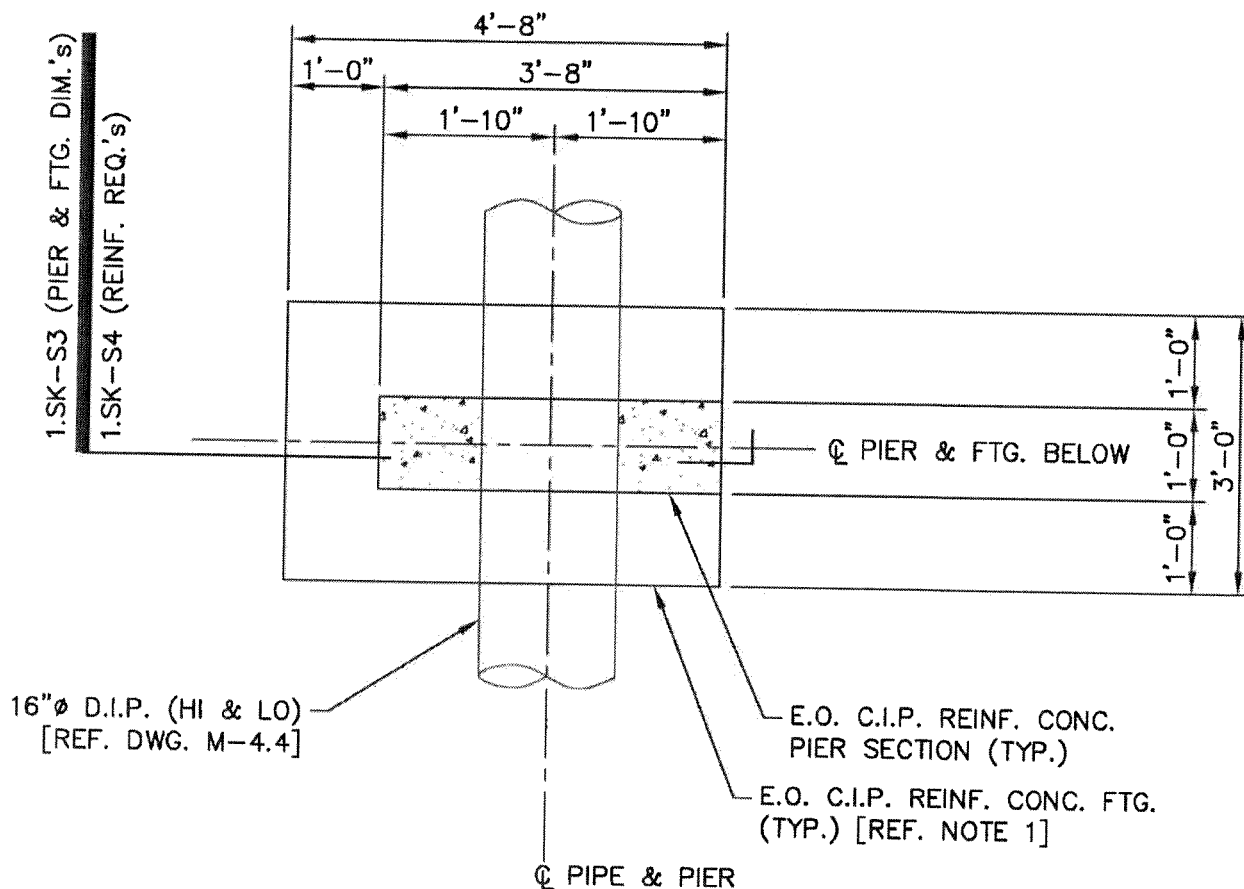
SWWRF L. Filtration & N. Pond Improv.

JOB# 1024-0147

DATE: 05/16/12

SK-S1

SHEET 1 OF 4



1 - PLAN - PIPE SUPPT. FTG. & PIER

SCALE: 1/2"=1'-0"

NOTES:

1. T.O. FTG. EL 1'-0" (MIN.) BELOW GRADE. COORDINATE w/ CIVIL & MECH. DWG.'s AS REQUIRED.
2. REFERENCE DWG. S-0.1 FOR GENERAL NOTES & MATERIAL DESIGN CRITERIA.



McKIM & CREED

1365 Hamlet Avenue
Clearwater, Florida 33756
Phone: (727) 442-7196 Fax: (727) 461-3827
www.mckimcreed.com

ADDENDA - UFPS PIPE SUPPORT INFORMATION

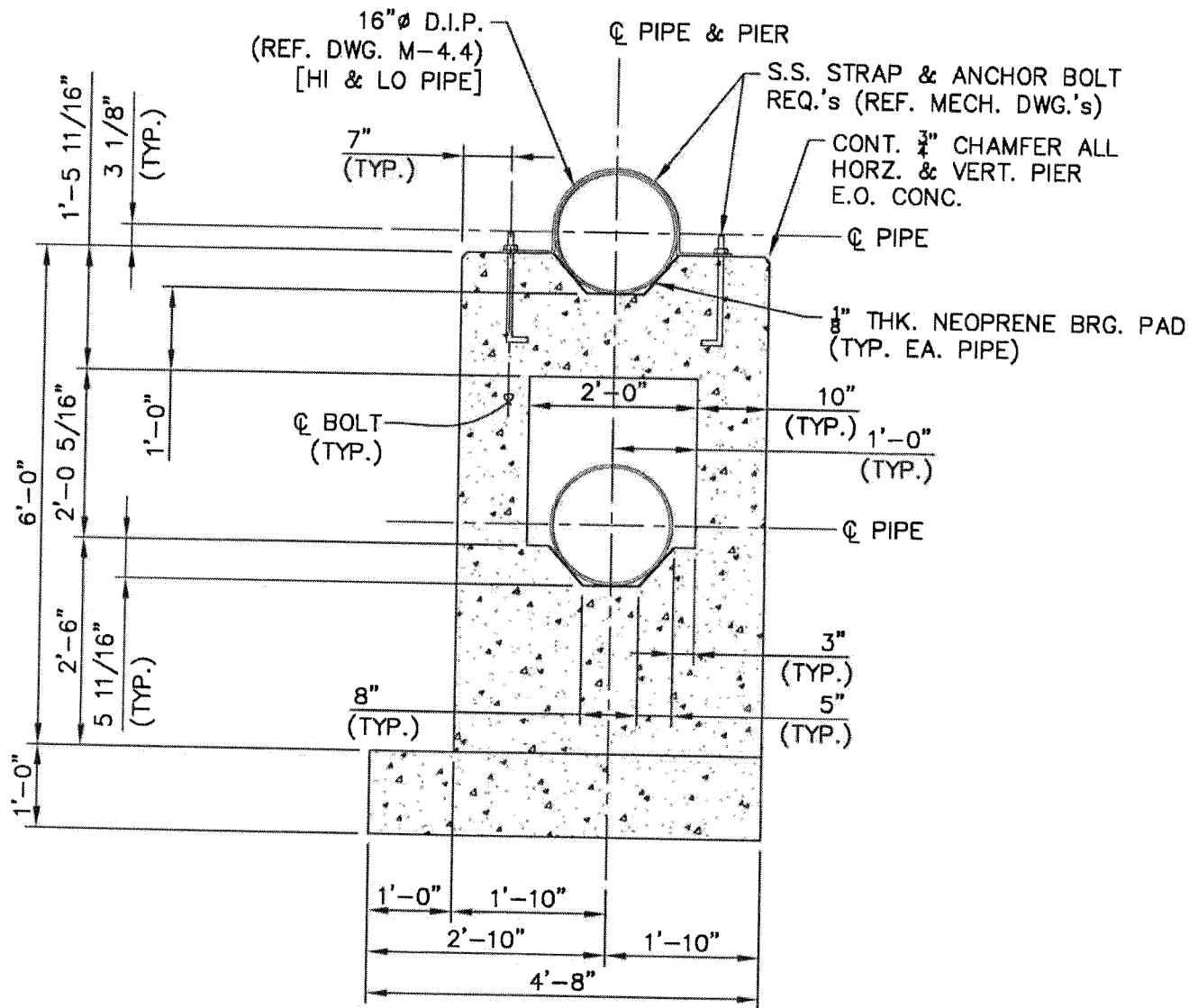
SWWRF L. Filtration & N. Pond Improv.

JOB# 1024-0147

DATE: 05/16/12

SK-S2

SHEET 2 OF 4



1 - SECTION - THRU PIPE SUPPT. FTG. & PIER

SCALE: 1/2"=1'-0"

NOTES:

1. REFERENCE SK-S1 & SK-S2 FOR ADDITIONAL NOTES & INFORMATION.



McKIM & CREED

1365 Hamlet Avenue
Clearwater, Florida 33756
Phone: (727) 442-7196 Fax: (727) 461-3827
www.mckimcreed.com

ADDENDA - UFPS PIPE SUPPORT INFORMATION

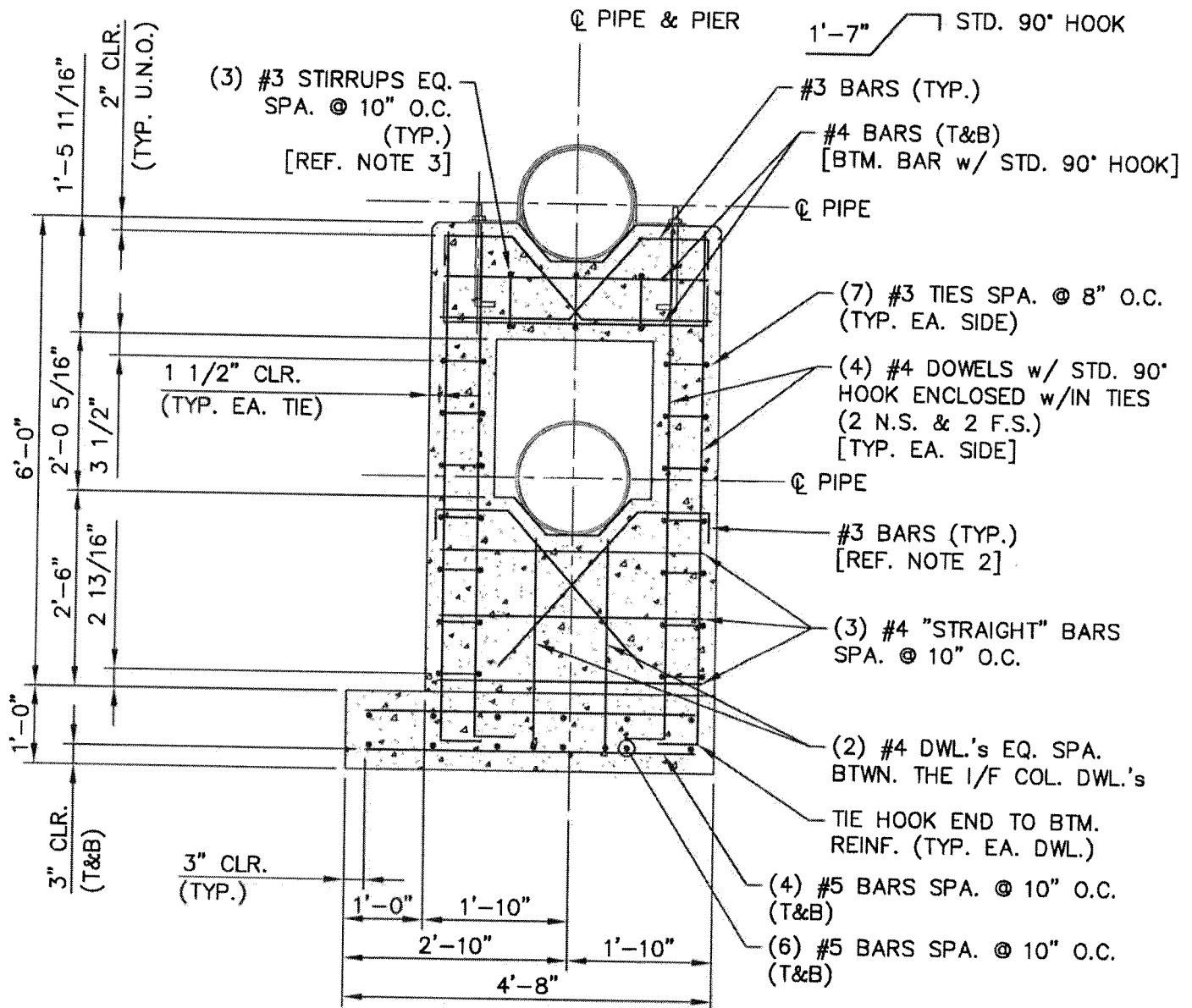
SWWRF L. Filtration & N. Pond Improv.

JOB# 1024-0147

DATE: 05/16/12

SK-S3

SHEET 3 OF 4



1 - SECTION - PIPE SUPPT. FTG. & PIER

SCALE: 1/2"=1'-0"

NOTES:

- PIER SECTION VERT. & HORZ. BARS ARE N.S. & F.S. U.N.O..
- #3 BAR ASSEMBLY SIMILAR TO #3 BAR FOR "HI" PIPE EXCEPT DIAGONAL LEG LENGTH 2'-7" (MIN.).
- PROVIDE 1 1/2" CLR. DISTANCE ON SIDE LEG OF STIRRUPS. STIRRUPS TO ENCLOSE THE #4 "STRAIGHT" TOP BARS, THE #4 BOTTOM BARS & THE STRAIGHT LEG OF THE #3 DIAGONAL BARS.
- REFERENCE SK-S1 & SK-S2 FOR ADDITIONAL NOTES & INFORMATION.



McKIM & CREED

1365 Hamlet Avenue
Clearwater, Florida 33756
Phone: (727) 442-7196 Fax: (727) 461-3827
www.mckimcreed.com

ADDENDA - UFPS PIPE SUPPORT INFORMATION

SWWRF L. Filtration & N. Pond Improv.

JOB# 1024-0147

DATE: 05/16/12

SK-S4

SHEET 4 OF 4

BID FORM A**MANATEE COUNTY / IFB #12-1310-OV / ADDENDUM #4 (06.07.2012)****SWWRF LAKE FILTRATION AND NORTH POND IMPROVEMENTS, BRADENTON****MANATEE COUNTY, FL PROJECT NO.: 6079180****BASED ON A COMPLETION TIME OF BID "A" 730 CALENDAR DAYS**

Bid Item No.	Description	Estimated Quantity	Unit	Unit Price	Total
1	SWWRF Mobilization/Demobilization	1	LS	\$	\$
2	Demolition	1	LS	\$	\$
3A	Reject Storage Pond and North Reclaimed Water Storage Pond Improvements	1	LS	\$	\$
3B	Unsuitable Materials: Remove and Replace*	60,000	CY	\$	\$
4	Disk Filters	1	LS	\$	\$
5	Reclaimed Water Return Pump Station	1	LS	\$	\$
6	Waste Backwash Pump Station	1	LS	\$	\$
7	North Pond Outlet Structure Improvements	1	LS	\$	\$
8	Effluent Pump Station Flowmeter Assembly	1	LS	\$	\$
9	Chlorination Facilities	1	LS	\$	\$
10	Site Piping	1	LS	\$	\$
11	Replace Intake Structure Screens in Middle and South Ponds and Refurbish Middle Pond Outfall	1	LS	\$	\$
12	Unfiltered Pump Station	1	LS	\$	\$
13	Electrical Work & Instrumentation	1	LS	\$	\$
14	Discretionary Work	1	LS		\$ 500,000.00
TOTAL BASE BID PRICE FOR BID ITEMS 1 THROUGH 14 (BASED ON BID "A" 730 CALENDAR DAYS COMPLETION)					\$

BIDDER:_____

AUTHORIZED SIGNATURE:_____

00300-2

BID "A"

Addendum #4 (06.07.2012)

BID FORM A

MANATEE COUNTY / IFB #12-1310-OV / ADDENDUM #4 (06.07.2012)

SWWRF LAKE FILTRATION AND NORTH POND IMPROVEMENTS, BRADENTON

MANATEE COUNTY, FL PROJECT NO.: 6079180

BASED ON A COMPLETION TIME OF BID "A" 730 CALENDAR DAYS

	BID ALTERNATE ITEMS 15, 16 AND 17				
15	Hauling of Fill from Perico Preserve Excavation Site	150,000	CY	\$	\$
16	Fill Quantity Deduction from Perico Preserve Excavation Site	150,000	CY	\$	\$
17	2 Year Warranty Bond*	1	LS	\$	\$

The BIDDER must submit a bid for bid items 1 through 14 and the sum of these bid items will be considered the Total Amount of Base Bid. The BIDDER must also submit unit prices for Bid Alternate Items 15, 16 and 17. The BIDDER must submit a bid on all items or the bid shall be considered irregular. The OWNER reserves the right to accept or reject the bid. The OWNER, or his representative, further reserves the unqualified right to determine whether any particular item or items or materials, equipment, or whatsoever is an approved equal, and reserves the unqualified right to a final decision regarding the approval or rejection of the same. The bid selection shall be based on the apparent low bidder for the **"TOTAL AMOUNT OF THE BASE BID AND ANY COMBINATION OF THE BID ALTERNATES "**. *

Revised per Addendum #4.

BIDDER:_____

AUTHORIZED SIGNATURE:_____

00300-3

BID "A"

Addendum #4 (06.07.2012)

BID FORM B**MANATEE COUNTY / IFB #12-1310-OV / ADDENDUM #4 (06.07.2012)****SWWRF LAKE FILTRATION AND NORTH POND IMPROVEMENTS, BRADENTON****MANATEE COUNTY, FL PROJECT NO.: 6079180****BASED ON A COMPLETION TIME OF BID "B" 640 CALENDAR DAYS**

Bid Item No.	Description	Estimated Quantity	Unit	Unit Price	Total
1	SWWRF Mobilization/Demobilization	1	LS	\$	\$
2	Demolition	1	LS	\$	\$
3A	Reject Storage Pond and North Reclaimed Water Storage Pond Improvements	1	LS	\$	\$
3B	Unsuitable Materials: Remove and Replace*	60,000	CY	\$	\$
4	Disk Filters	1	LS	\$	\$
5	Reclaimed Water Return Pump Station	1	LS	\$	\$
6	Waste Backwash Pump Station	1	LS	\$	\$
7	North Pond Outlet Structure Improvements	1	LS	\$	\$
8	Effluent Pump Station Flowmeter Assembly	1	LS	\$	\$
9	Chlorination Facilities	1	LS	\$	\$
10	Site Piping	1	LS	\$	\$
11	Replace Intake Structure Screens in Middle and South Ponds and Refurbish Middle Pond Outfall	1	LS	\$	\$
12	Unfiltered Pump Station	1	LS	\$	\$
13	Electrical Work & Instrumentation	1	LS	\$	\$
14	Discretionary Work	1	LS		\$ 500,000.00
TOTAL BASE BID PRICE FOR BID ITEMS 1 THROUGH 14 (BASED ON BID "A" 640 CALENDAR DAYS COMPLETION)					\$

BIDDER:_____

AUTHORIZED SIGNATURE:_____

00300-4

BID "B"

Addendum #4 (06.07.2012)

BID FORM B**MANATEE COUNTY / IFB #12-1310-OV / ADDENDUM #4 (06.07.2012)****SWWRF LAKE FILTRATION AND NORTH POND IMPROVEMENTS, BRADENTON****MANATEE COUNTY, FL PROJECT NO.: 6079180****BASED ON A COMPLETION TIME OF BID "B" 640 CALENDAR DAYS**

	BID ALTERNATE ITEMS 15, 16 AND 17				
15	Hauling of Fill from Perico Preserve Excavation Site	150,000	CY	\$	\$
16	Fill Quantity Deduction from Perico Preserve Excavation Site	150,000	CY	\$	\$
17	2 Year Warranty Bond*	1	LS	\$	\$

The BIDDER must submit a bid for bid items 1 through 14 and the sum of these bid items will be considered the Total Amount of Base Bid. The BIDDER must also submit unit prices for Bid Alternate Items 15, 16 and 17. The BIDDER must submit a bid on all items or the bid shall be considered irregular. The OWNER reserves the right to accept or reject the bid. The OWNER, or his representative, further reserves the unqualified right to determine whether any particular item or items or materials, equipment, or whatsoever is an approved equal, and reserves the unqualified right to a final decision regarding the approval or rejection of the same. The bid selection shall be based on the apparent low bidder for the **"TOTAL AMOUNT OF THE BASE BID AND ANY COMBINATION OF THE BID ALTERNATES "**. *

Revised per Addendum #4.

BIDDER:_____

AUTHORIZED SIGNATURE:_____

00300-5

BID "B"

Addendum #4 (06.07.2012)

SECTION 01150 REVISION 1
ADDENDUM #4 (06/07/2012)

MEASUREMENT AND PAYMENT

PART 1 GENERAL

1.01 SCOPE OF WORK

- A. The scope of this section of the Contract Documents is to further define the items included in each Bid Item in the Bid Proposal section of these specifications. Payment will be made based on the specified items supplied and delivered in the description in this section for each bid item.

1.02 GENERAL

- A. All contract lump sum prices included in the Bid Proposal section will be full compensation for all labor, equipment and incidentals to construct the Lake Filter Improvements and appurtenances as specified in the Contract Documents under this contract.

1.03 WORK OUTSIDE AUTHORIZED LIMITS

- A. No payment will be made for work constructed outside the authorized limits of work.

1.04 PAYMENT

- A. Lump Sum Items: Where payment for items is shown to be paid for on a lump sum basis, no separate payment will be made for any item of work required to complete the lump sum item within the limits of work shown or specified.

1.05 COSTS INCLUDED IN PAYMENT ITEMS

- A. Separate Payment: No separate payment will be made for the following items and the cost of such work shall be included in the applicable pay items of work.
 - 1. Clearing and grubbing.
 - 2. Trench excavation, including necessary pavement and rock removal, except as otherwise specified.
 - 3. Dewatering and disposal of surplus water.
 - 4. Structural fill, backfill, grading, and related transport costs.
 - 5. Replacement of paved and unpaved roadways, grass (sod) and shrubbery plots.
 - 6. Cleanup.

7. Foundation and borrow materials, except as hereinafter specified.
 8. Testing and placing system in operation.
 9. Any material and equipment required to be installed and utilized for tests.
 10. Pipe, structures, pavement replacement, restoration and/or appurtenances included within the limits of lump sum work, unless otherwise shown.
 11. Maintaining the existing quality of service during construction, including any required by-pass pumping.
 12. Appurtenant work as required for a complete and operable system.
 13. Repair of damaged irrigation piping and sprinkler heads.
 14. Maintaining access to treatment plant structures with barriers, lights, signage etc.
 15. Erosion Control
 16. Painting
- B. Cleanup: CONTRACTOR's attention is called to the fact that cleanup is considered a part of the work of construction. No payment will be made until cleanup is essentially complete.

1.06

BID ITEMS

Bid Item No. 1 - Mobilization/Demobilization

- A. Mobilization shall be the preparatory work and operations in mobilizing for beginning work on the project, including, but not limited to, those operations necessary for the movement of personnel, equipment, supplies and incidentals to the project site, and for the establishment of temporary offices, storage buildings, safety equipment and first aid supplies, sanitary and other facilities, as required by the Contract Documents and applicable laws and regulations. The costs of bonds, except as noted in Bid Item 17, required insurance, permits and any other preconstruction expense necessary for the start of the work, excluding the cost of construction materials, shall also be included in this item. Demobilization shall be the work of removing temporary facilities from the site.
- B. Payment for the mobilization/demobilization shall not exceed 5 percent (5%) of the Bid Price. Partial payments for this item will be made in accordance with the following schedule:

Percent of Original Contract Amount <u>Amount Earned</u>	Allowable Percent of the Lump Sum <u>Price for the Item</u>
After Contract Execution	25
10	35
20	45
30	55
40	65
50	70
60	75
70	80
80	85
90	90
Substantial Completion	95
Final Payment	100

- C. These payments will be subject to the standard retainage provided in the agreement. Payment of the retainage will be made after completion of the work and demobilization.

Bid Item No. 2 - Demolition

- A. Payment of the applicable lump sum price shall be full compensation for furnishing, but is not limited to, all plant, labor, materials and equipment necessary for the removal, demolition and disposal of structures, equipment, piping, valves and soil materials for installation of new facilities. Demolition shall include removal of the North Reclaimed Water Storage Pond stored water and dewatering of the berm and bottom soils; excavation of the top 24" of berm and bottom soils in the North Pond; separation and storage of suitable top soil materials and berm fill materials for reuse; disposal of unsuitable materials; removal of existing lake filters equipment, piping, valves, controls, electrical equipment and concrete pad; removal of slide gates, sluice gates, grating and railings from the existing North Pond outlet structure; cutting holes in the structure; removing the north and south 30-inch reclaimed water flowmeter valve vault structures to 36 inches below finished grade; removal of 42-inch D.I. pipe from the Effluent Pump Station to its connection with the 30-inch RCW pipe; removal of the Reject Pump Station intake structure and its 36-inch intake pipe; removal of 24-inch, 12-inch and 8-inch RCW piping and valves; removal of 12-inch Reclaimed Water Return pipelines, flowmeters, valves, fittings and supports at ABW Filters 1,2,3,4,5,6 and 7; abandoning and filling with flowable fill 30-inch, 24-inch and 20-inch Reclaimed Water Return pipelines;

removing short lengths of asphalt drives and chain link fences; removal of stored water from the Middle and South Ponds; removal of the screens from the intake structures for the Middle and South Ponds; and all other appurtenant work related to this lump sum pay item as presented in the Contract Documents.

Bid Item No. 3A - Reject Storage Pond and North Reclaimed Water Storage Pond Improvements

- A. Payment of the applicable lump sum price shall be full compensation for, but is not limited to, furnishing all plant, labor, materials, hauling, and equipment necessary to construct a new Reject pond and Reclaimed Water Storage Pond out of the existing North Pond by backfilling and compacting the North Pond, installing a dividing earthen berm between the ponds, constructing/reconstructing the exterior earthen berms for the Reject and RCW storage ponds; constructing emergency overflow facilities, providing and installing a HDPE liner in the Reject and North RCW storage ponds; installing concrete stairs, HDPE safety ladders and gas vents; constructing berm access and perimeter drives; installing bollards; installing Reject Pond Outlet assembly, 36-inch D.I. outlet pipe, concrete collars, intake structure, intake manhole, and 36-inch intake pipe; installing two intake structures in the North Pond, including 36-inch intake pipe, RCP outlet pipes and concrete discharge pad; installing a toe drain system around exterior perimeter of the berms; including all site preparation, clearing, grading, drainage, paving, grassing, borrow, demolition, excavation, fencing, signage and all other appurtenant work related to this lump sum pay item as necessary for a complete and operable project and as presented in the Contract Documents.

Bid Item 3B - Unsuitable Materials: Remove and Replace

- A. The Per Cubic Yard Bid Price Payment shall be full compensation for furnishing all labor, materials and equipment necessary for dewatering, excavating, loading and hauling unsuitable fill material from the SWWRF; purchasing and hauling suitable clean fill material to the SWWRF; and unloading, placement, compacting and testing of material at the SWWRF. Please see attached figure for locations. Placement and compaction of this backfill material is included in Bid Item No. 03a.
- B. Payment shall be made based upon written authorization and shall reflect the actual per cubic yard quantity agreed upon by the Contractor and the Owner as based on the truck tickets signed by the Owner's representative and adjusted for soil bulking as determined by

geotechnical testing. Contractor shall take necessary precautions to prevent over-excavation of unsuitable soils resulting in removal of clean soils. Removal of suitable soils (>3") with the unsuitable materials will result in complete rejection and non-payment of the associated load(s).

- C. The estimated quantity of unsuitable fill material to be replaced from the SWWRF site is approximately 60,000 cubic yards. Actual quantity may vary.

Bid Item No. 4 - Disk Filters

- A. Payment of the applicable lump sum price shall be full compensation for furnishing, but is not limited to, all plant, labor, materials and equipment necessary to provide and install disk filter units, including dewatering; excavation grading; crushed stone base; backfill; asphalt paving; sod; concrete pad; concrete supports; 3 disk filters; aluminum walkway stairs and railings; 24 inch inlet header, 30 inch outlet header, 30-inch overflow header; 20 inch inlet, outlet and overflow pipes; 20 inch butterfly valves; pipe supports, 8,4 and 2-inch reclaimed water supply pipes for spray systems; 3,4 and 6-inch drain pipes; control panels; electrical work; instrumentation and SCADA; and all other appurtenant work related to this lump sum pay item as presented in the Contract Documents.

Bid Item No. 5 - Reclaimed Water Return Pump Station

- A. Payment of the applicable lump sum price shall be full compensation for furnishing, but is not limited to, all plant, labor, materials and equipment necessary to provide and install a Reclaimed Water Return Pump Station in the North Pond berm, including dewatering; sheeting; excavation; grading; crushed stone base; backfill; sod; precast; concrete wetwell; concrete pad; 3 submersible pumps; pump base elbows, 12-inch stainless steel discharge pipes; 12-inch ductile iron discharge pipes, 12-inch check valves, 12-inch gate valves and 12-inch motorized butterfly valve; aluminum hatches, stilling well, vent; 24-inch ductile iron header, 24-inch motorized butterfly valve; air release and vacuum valve; strap-on flowmeter; pipe supports; pressure gauges; level sensor; control panel; variable frequency drives; electrical work; instrumentation and SCADA; and all other appurtenant work related to this lump sum pay item as presented in the Contract Documents.

Bid Item No. 6 - Waste Backwash Pump Station

- A. Payment of the applicable lump sum price shall be full compensation for furnishing, but is not limited to, all plant, labor materials and equipment necessary to provide and install a Waste Backwash Pump Station, including dewatering; sheeting; excavation; crushed stone base; backfill; grading; sod; precast concrete wetwell, concrete pad, 2 submersible pumps, pump base elbows; PVC discharge pipe; 4 and 6-inch ductile iron discharge pipe; 4-inch check valves and plug valves; aluminum hatches; air vent; air release valve; pipe supports, float switches; control panel; electrical work; instrumentation and SCADA; and all other appurtenant work related to this lump sum pay item as presented in the Contract Documents.

Bid Item No. 7 - North Pond Outlet Structure Improvements

- A. Payment of the applicable lump sum price shall be full compensation for furnishing, but is not limited to, all plant, labor, materials and equipment necessary to provide and install improvements to the North Pond Outlet Structure, including 2 new stainless steel sluice gates; 2 fixed overflow weirs; aluminum grating and railings; saw cutting holes in the concrete walls for the sluice gates; filling the existing holes in the concrete walls with the steel reinforcing and structural concrete; installing the 12-inch ductile iron recirculation pipe in a concrete wingwall; and all other appurtenant work related to this lump sum pay item as presented in the Contract Documents.

Bid Item No. 8 - Effluent Pump Station Flowmeter Assembly

- A. Payment of the applicable lump sum price shall be full compensation for furnishing, but is not limited to, all plant, labor, materials and equipment necessary to provide and install the Effluent Pump Station Flowmeter Assembly, including dewatering; excavation; sheeting; crushed stone base; concrete pad; backfill; grading; sod; 30 and 36-inch ductile iron pipe, 30-inch strap-on flowmeter; four 36-inch butterfly valves; one 36-inch motorized butterfly valve; one 36-inch globe-type backpressure valve; one 36-inch plug valve, 2 air release valves; pipe supports; electrical work; instrumentation and SCADA; and all other appurtenant work related to this lump sum pay item as presented in the Contract Documents.

Bid Item No. 9 - Chlorination Facilities

- A. Payment of the applicable lump sum price shall be full compensation for furnishing, but is not limited to, all plant, labor, materials and equipment necessary to provide and install chlorination facilities, including 2 sodium hypochlorite chemical feed pumps on a prefabricated skid with PVC piping, ball valves, pulsation dampeners, surge relief valves, backpressure valves, pressure gauges; precast concrete valve vault, aluminum hatch, sump pump, sodium hypochlorite injection assembly, pipe supports; 3"x1" double contained PVC feed piping, ½-inch HDPE sample piping; ½-inch stainless steel tap with ½-inch stainless steel ball valve; and all other appurtenant work related to this lump sum pay item as presented in the Contract Documents.

Bid Item No. 10 - Site Piping

- A. Payment of the applicable lump sum price shall be full compensation for furnishing, but is not limited to, all plant, labor, materials and equipment necessary to provide and install site piping, including dewatering; excavation; bedding; haunching, initial backfill; 36,30,24,8,4 and 2-inch Reclaimed Water pipelines; 24-inch Reclaimed Water Return Pipelines; 36 and 20-inch Reject Water pipelines; 12-inch RCW Recirculation pipelines; 6 and 4-inch Waste Backwash pipelines; 3"x1" PVC double-contained sodium hydrochlorite pipelines; 1/2-inch HDPE sample lines; 8-inch potable water pipelines; gate valves, butterfly valves and plug valves; concrete collars; connection to Filter No. 7 Bypass Channel; connection to Filter No. 7 Waster Backwash Channel; connection to the Headworks; grading; sodding; asphalt paving; and all other appurtenant work related to this lump sum pay item as presented in the Contract Documents.

Bid Item No. 11 - Replace Intake Structure Screens In Middle And South Ponds and Refurbish Middle Pond Outfall

- A. Payment of the applicable lump sum price shall be full compensation for furnishing, but is not limited to, all plant, labor, materials and equipment necessary to replace the aluminum intake screens on the 3 intake structures in the Middle and South Reclaimed Water Storage Ponds and Refurbish Middle Pond Outfall, including aluminum screens, frames, fasteners, gates, actuators, dewatering and all other appurtenant work related to this lump sum pay item as presented in the Contract Documents.

Bid Item No. 12 - Unfiltered Pump Station

- A. Payment of the applicable lump sum price shall be full compensation for, but is not limited to, all plant, labor, materials and equipment necessary to provide a complete and functioning pump station including; precast wet well; grating; stairs; concrete; 16 inch, 24 inch, and 36 inch piping and appurtenances; excavation; bedding, haunching; backfill; pump installation; grading; and all other appurtenant work related to this lump sum pay item as presented in the Contract Documents.

Bid Item No. 13 - Electrical Work and Instrumentation

- A. Payment of the applicable lump sum price shall be full compensation for furnishing, but is not limited to, all plant, labor, materials and equipment necessary to construct a complete power and control system including switches, panels, switchgear, VFD's, MCC, control panels, duct banks, lighting, power circuitry; and install, set-up, calibrate, program, integrate, and coordinate a complete instrumentation package as specified including all instruments, PLC's, software and programming, fiber optic cable, transmitters, interface panels, programming terminal, and all appurtenances as shown on the plans and specifications.

Bid Item No. 14 - Discretionary Work

- A. This payment item is for the Owner's requested changes in the work pertaining to the Lake Filter Improvements Work that requires authorization of the Owner prior to the work being performed. This item is not to cover work outlined in the plans and/or specifications or for work incidental to the completion of the project as outlined herein, and shall only be used when directed by the Owner.
- B. Payment shall be made based on written authorization of the additional work. The authorization shall reflect the actual amounts agreed to by the Contractor and the Owner.
- C. Payment of the applicable lump sum price shall be full compensation for furnishing, but is not limited to, all plant, labor; materials and equipment necessary to perform work not covered under Bid Item No. 1 - 13 and is considered outside of the original scope of work. Proposals for all work performed under Bid Item No. 14 shall be submitted to the Engineer and the Owner for review and approval.

The following bid alternates are included to obtain unit prices for additions/deductions resulting from the Owner's

option to utilize suitable fill dirt that may be available from a County project named "Perico Preserve Seagrass Basin Excavation" (Perico Preserve Excavation Site). The Perico Preserve Excavation Site is currently under design and permitting by the County. If permits are obtained and a contract is executed (separate from the Lake Filtration and North Pond Improvement project) for the excavation and stockpiling of material at this site, then the County will exercise the following bid alternate Additions/Deductions in order to utilize the suitable fill material from this site at the SWWRF N Pond Improvements site. Included in the bid documents for information only is the soils report for the Perico Preserve Excavation site by PSI dated February 17, 2012.

Alternate Bid Item No. 15 - Hauling of Fill from Perico Preserve Excavation Site to SWWRF

- A. The Per Cubic Yard Bid Price Payment shall be full compensation for furnishing all labor, materials and equipment necessary for hauling excavated suitable fill material from the Perico Preserve Excavation Site to the SWWRF and unloading at the SWWRF. Please see attached figure for locations. Placement and compaction of this fill material is included in Bid Item No. 3A.
- B. Payment shall be made based upon written authorization and shall reflect the actual per cubic yard quantity agreed upon by the Contractor and the Owner as based on the truck tickets signed by the Owner's representative and adjusted for soil bulking as determined by geotechnical testing.
- C. The estimated quantity of suitable fill material to be hauled from the Perico Preserve Excavation Site is approximately 150,000 cubic yards. Actual quantity may vary.

Alternate Bid Item No. 16 - Fill Quantity Deduction from Perico Preserve Excavation Site

- A. The Per Cubic Yard Bid Price Deduction shall be full compensation for furnishing all labor, materials and equipment necessary for purchasing and hauling suitable fill material from any site other than the Perico Preserve Excavation Site to the SWWRF and unloading at the SWWRF.
- B. Deduction from Bid Item No. 3 shall be made based upon written authorization and shall reflect the actual per cubic yard quantity agreed upon by the Contractor and the Owner as based on the truck tickets signed by the Owner's representative and adjusted for soil bulking as

determined by geotechnical testing.

- C. The estimated quantity of suitable fill material to be hauled from the Perico Preserve Excavation Site is approximately 150,000 cubic yards. Actual quantity may vary.

The following bid alternate is included to obtain the lump sum price for a two year warranty bond. Warranty Bond, in conjunction with Payment and Performance Bond, shall insure the provisions under Section 00030 Terms and Conditions C.07 of the Contract Documents.

Alternate Bid Item No. 17 - 2 Year Warranty Bond

- A. Payment of the applicable lump sum price shall be full compensation for furnishing the Warranty Bond to go into effect upon completion and release of the Payment and Performance Bond and shall remain in effect for a period of twenty-four (24) months.
- B. Payment shall be based upon written authorization by the Owner at the award of the bid and shall reflect the lump sum bid item value provided on the successful bid form.
- C. Surety requirements shall be the same as previously submitted for the Invitation for Bid, Payment and Performance Bonds.

PART 2 PRODUCTS (NOT USED)

PART 3 EXECUTION (NOT USED)

END OF SECTION