

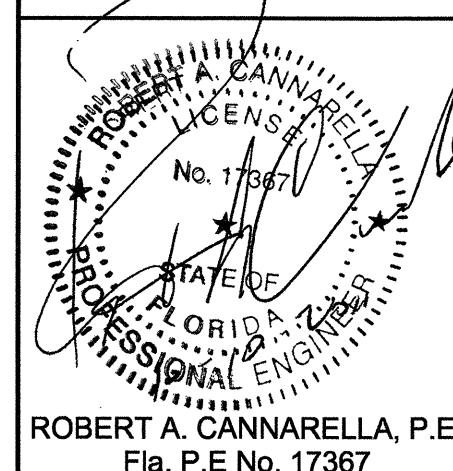
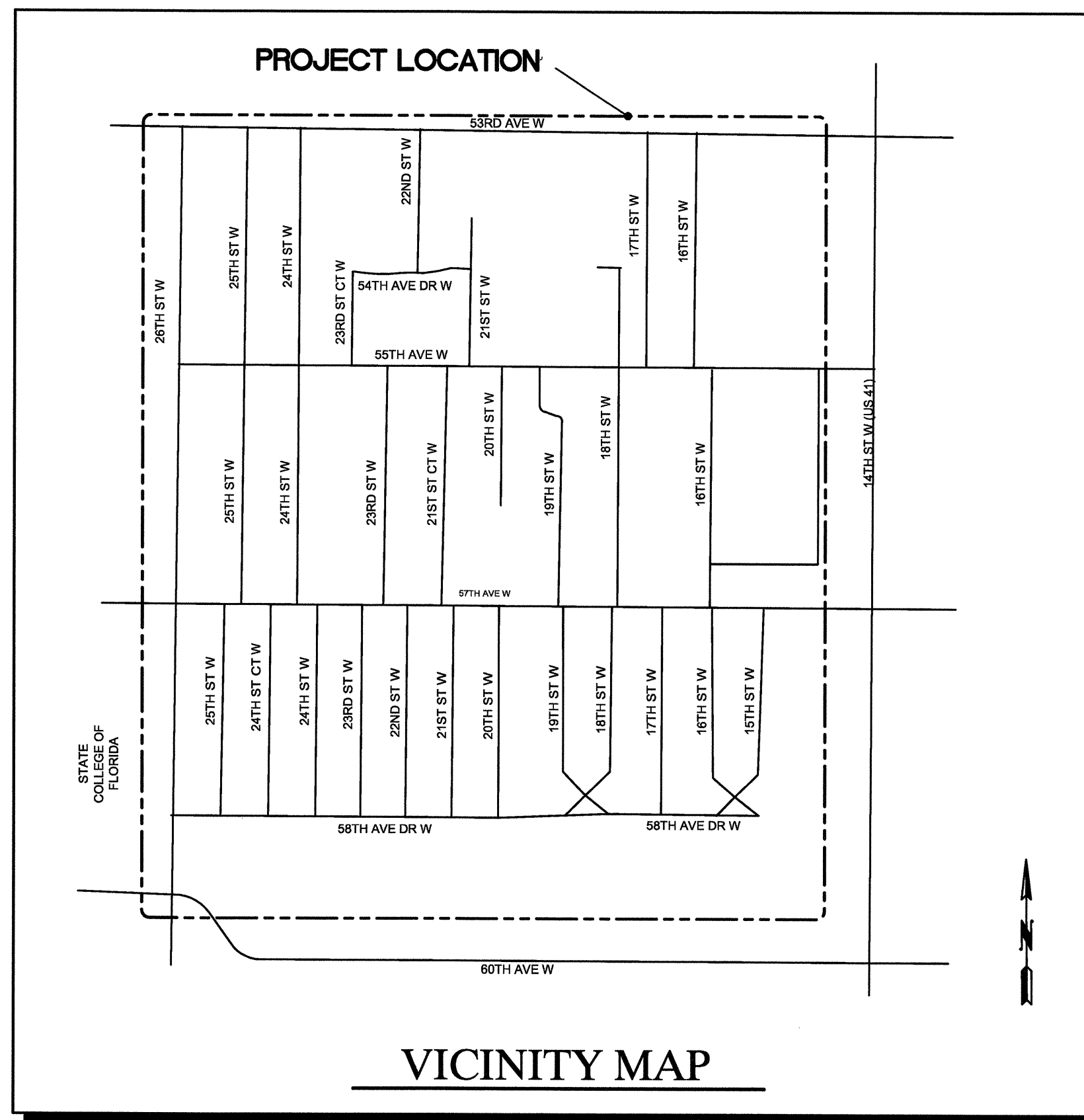
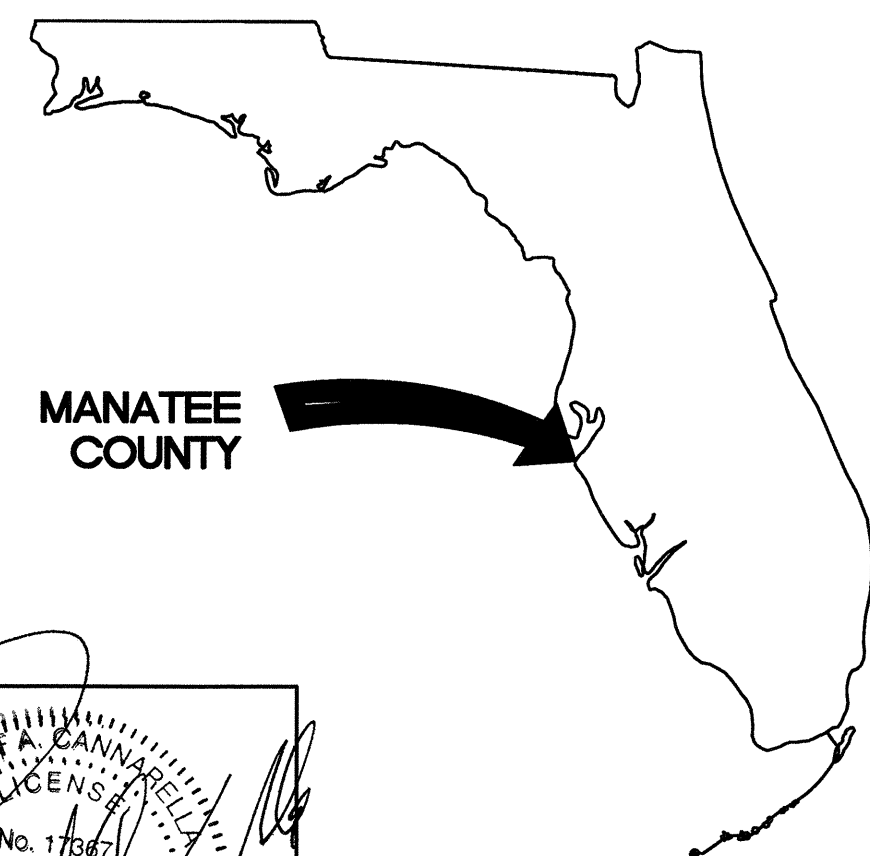
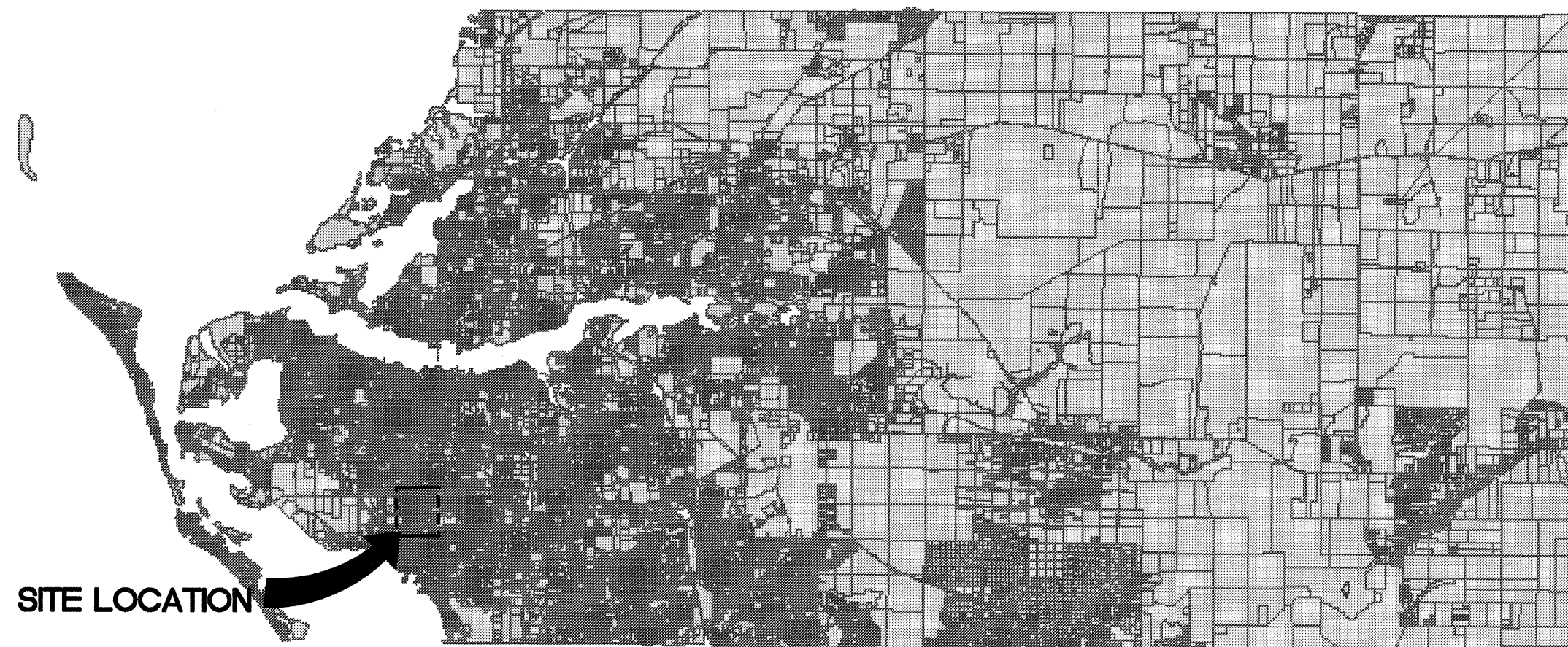
Suburban System Water Line Replacement Project Phase 2

Manatee County, Florida Project No. 60747.70

INDEX OF DRAWINGS

SHEET NO.	DESCRIPTION
-----------	-------------

G1	COVER SHEET
G2	LEGEND AND NOTES
G3	KEY PLAN
CIVIL	
C1	PLAN SHEET WATER LINE 26th ST W FROM 53rd AVE W TO 5419
C2	PLAN SHEET WATER LINE 26th ST W FROM 5419 TO 5615
C3	PLAN SHEET WATER LINE 26th ST W FROM 5615 TO 5805
C4	PLAN SHEET WATER LINE 26th ST W FROM 5811 TO 60th AVE W
C5	PLAN SHEET WATER LINE 25th ST W FROM 57th AVE W TO 5724
C6	PLAN SHEET WATER LINE 25th ST W FROM 5728 TO 58th AVE DR W
C7	PLAN SHEET WATER LINE 24th ST CT W FROM 57th AVE W TO 5728
C8	PLAN SHEET WATER LINE 24th ST CT W FROM 5804 W TO 58th AVE DR W
C9	PLAN SHEET WATER LINE 24th ST W FROM 57th AVE W TO 5736
C10	PLAN SHEET WATER LINE 24th ST W FROM 5615 TO 58th AVE DR W
C11	PLAN SHEET WATER LINE 23rd ST W FROM 57th AVE W TO 5736
C12	PLAN SHEET WATER LINE 23rd ST W FROM 5736 TO 58th AVE DR W
C13	PLAN SHEET WATER LINE 22nd ST W FROM 57th AVE W TO 5736
C14	PLAN SHEET WATER LINE 22nd ST W FROM 5736 TO 58th AVE DR W
C15	PLAN SHEET WATER LINE 21st ST W FROM 57th AVE W TO 5736
C16	PLAN SHEET WATER LINE 21st ST W FROM 5736 TO 58th AVE DR W
C17	PLAN SHEET WATER LINE 20th ST W FROM 57th AVE W TO 5736
C18	PLAN SHEET WATER LINE 20th ST W FROM 5736 TO 58th AVE DR W
C19	PLAN SHEET WATER LINE 18th ST W & 19th ST W FROM 57th AVE W TO 5716
C20	PLAN SHEET WATER LINE 18th ST W & 19th ST W FROM 5804 TO INTERSECTION
C21	PLAN SHEET WATER LINE 17th ST W FROM 57th AVE W TO 1703
C22	PLAN SHEET WATER LINE 17th ST W FROM 1703 TO BAYSHORE APMT
C23	PLAN SHEET WATER LINE 15th ST W & 16th ST W FROM 57th AVE W TO 5722
C24	PLAN SHEET WATER LINE 15th ST W & 16th ST W FROM 5718 TO INTERSECTION
C25	PLAN SHEET WATER LINE 55th AVE W FROM 26th ST W TO 25th ST W
C26	PLAN SHEET WATER LINE 58th AVE DR W FROM 26th ST W TO 2208
C27	PLAN SHEET WATER LINE 58th AVE DR W FROM 2208 TO 1902
C28	PLAN SHEET WATER LINE 58th AVE DR W FROM 1902 TO 1502
C29	PLAN SHEET WATER LINE 16th ST W FUTURE PIPELINE TO TRI MOR MOBILE HOME PARK
C30	PLAN SHEET WATER LINE 53rd AVE W FROM 24th ST W TO 22nd ST W
C31	PLAN SHEET WATER LINE 53rd AVE W FROM 24th ST W TO 2310
C32	PLAN SHEET WATER LINE 16th ST W FROM 54th AVE W TO 55th AVE W
C33	PLAN SHEET WATER LINE 55th AVE W FROM 18th ST W TO 16th ST W
D1	DETAILS
D2	DETAILS
D3	DETAILS
D4	DETAIL A - CROSSING AT 26th ST WEST
D5	BEST MANAGEMENT PRACTICES
D6	EXISTING SUBURBAN WATER SYSTEM PLAN



DSGN	BJK	NO.	DATE	REVISION	BY	APVD
DR	BJK					
CHK	RAC					
APVD	RAC					

BID DOCUMENTS

VERIFY SCALE
BAR IS ONE INCH ON
ORIGINAL DRAWING.
0 1"
IF NOT ONE INCH ON
THIS SHEET, ADJUST
SCALES ACCORDINGLY.

CH2MHILL
4350 WEST CYPRESS STREET SUITE 600
TAMPA, FLORIDA 33607-4155
LB 0002934 AA C000656

MANATEE COUNTY
SUBURBAN SYSTEM
WATER LINE REPLACEMENT PROJECT
PHASE 2
MANATEE COUNTY, FLORIDA
PROJECT No. 60747.70

COVER SHEET

SHEET	G1
DWG	GICOVER.DWG
DATE	JULY 2011
PROJ	386879.WM

\\Manatee County Waterline\Drawings\T\cover.dwg Plotted: 2/18/2009 0:13 pm By: bklein1 Model Plot Scale: 1=10 X-ref Dwg's

CONTACTS

MANATEE COUNTY
PROJECT MANAGEMENT
VINCENT CANNA
PROJECT MANAGER
(941) 708-4850 EXT. 7338

MANATEE COUNTY
PUBLIC WORKS DEPT.
WAYNE TROXLER, PE
(941) 708-4850 EXT. 7650

MANATEE COUNTY WATER
DEPARTMENT
DAVE SCHOFIELD
SUPERINTENDENT WATER
DISTRIBUTION
(941) 782-8811 EXT. 5130

MANATEE COUNTY UTILITIES
METER SERVICES
MIKE HOOEY
941-792-8811 EXT.5401

TECO/PEOPLES GAS CO.
DAN SHANAHAN
(941) 342-4030
FAX: (941) 342-4011
EMERGENCY: 1-877-832-6911

VERIZON FLORIDA INC.
WAYNE SUMNER
(941) 330-9203
FAX: (941) 906-6706

FLORIDA POWER & LIGHT
GREG COKER
(941) 723-4430
FAX: (941) 723-4444
EMERGENCY:
1-800-4-OUTAGE

MANATEE COUNTY HEALTH
DEPT.
HARRY MESSICK
(941) 748-0747 EXT. 1355
FAX: (941) 750-9364

SOUTHWEST FLORIDA WATER
MANAGEMENT DISTRICT
SARASOTA SERVICE OFFICE
DARYL R. FLATT, P.E.
(941) 377-3722
FAX: (941) 373-7660

DEPARTMENT OF
ENVIRONMENTAL PROTECTION
STEPHANIE BARIOS
(813) 632-7600, EXT. 408
FAX: (813) 632-7662

BRIGHT HOUSE NETWORKS
TOM WRIGHT
(941) 748-3816 EXT. 21348
FAX: (813) 632-7662

SUNSHINE STATE ONE CALL OF
FLORIDA
1-(800) 432-4770

MANATEE COUNTY PUBLIC
WORK DEPT.
TRAFFIC ENGINEERING
BOB AGRUSA, P.E.
(941) 749-3571



GENERAL NOTES

- 1.THE CONSTRUCTION DOCUMENTS HAVE BEEN PREPARED USING AVAILABLE INFORMATION PERTAINING TO EXISTING UTILITY SYSTEMS AND OTHER IMPROVEMENTS LOCATED WITHIN THE RIGHT-OF-WAY IN THE VICINITY OF THE NEW WORK. THE CONTRACTOR SHALL PERFORM ADDITIONAL INVESTIGATIONS OR FIELD EVALUATION PRIOR TO AND DURING CONSTRUCTION TO CONFIRM THE EXISTING CONDITIONS IN THE FIELD THAT MAY IMPACT CONSTRUCTION OF THE WORK TO VERIFY THE EXISTING LOCATION OF ALL ABOVE GRADE AND BELOW GRADE IMPROVEMENTS THAT MAY IMPACT CONSTRUCTION OF THE WORK.
- 2.SURVEY INFORMATION USED TO PREPARE THE CONSTRUCTION DOCUMENTS WAS COMPILED BY ZNS ENGINEERING, 201 5TH AVE. DR. EAST, BRADENTON, FLORIDA 34208 (941) 748-8080, LEAD SURVEYOR JIM GATCH, P.S.M.
- 3.ELEVATIONS SHOWN ON THE CONSTRUCTION DOCUMENTS ARE BASE UPON NATIONAL GEODETIC VERTICAL DATUM, 1929 (N.G.V.D. - 1929). MANATEE COUNTY BENCHMARK # 110-29-18, ELEVATION = 20.537.
- 4.HORIZONTAL DATUM IS BASED ON THE NORTH AMERICAN DATUM (NAD) OF 1983 (1990 ADJUSTMENT), FLORIDA STATE PLANE, WEST ZONE, AND WAS DERIVED FROM REDUNDANT REAL-TIME KINEMATIC GPS OBSERVATIONS UTILIZING NGS CONTROL POINT M 087 (NGS PID AG9192) AND ADHERES TO THE ACCURACY REQUIREMENTS OF FLORIDA'S MINIMUM TECHNICAL STANDARDS (6TIG7-6.003, F.A.C.).
- 5.IN THE EVENT A PUBLIC OR PRIVATE SURVEY MARKER, PROPERTY CORNER OR RIGHT-OF-WAY MARKER OR SIMILAR SURVEYED POINT IS DAMAGED OR MOVED BY CONSTRUCTION, THE CONTRACTOR SHALL ENGAGE A FLORIDA REGISTERED LAND SURVEYOR TO RESTORE SUCH ITEMS IMPACTED BY CONSTRUCTION.
- 6.THE PROJECT INVOLVES THE CONSTRUCTION OF BURIED POTABLE WATER PIPELINES. THE CONTRACTOR SHALL USE CAUTION IN PERFORMING THE WORK TO PREVENT DAMAGE TO EXISTING UTILITY SYSTEMS AND SHALL COORDINATE WITH UTILITY COMPANIES LISTED AND OTHER UTILITY COMPANIES PRIOR TO AND DURING CONSTRUCTION. THE CONTRACTOR SHALL PROVIDE A MINIMUM OF 48 HOURS NOTICE TO UTILITY COMPANIES PRIOR TO CONSTRUCTION. THE CONTRACTOR SHALL OBTAIN FIELD LOCATES OF EXISTING UNDERGROUND UTILITIES IN THE VICINITY OF NEW CONSTRUCTION.
- 7.THE CONTRACTOR SHALL PERFORM WORK IN ACCORDANCE WITH THE REQUIREMENTS OF THE SUNSHINE STATE ONE CALL OF FLORIDA, EXCAVATION GUIDE, LATEST EDITION. THE CONTRACTOR SHALL CONTACT THE ONE CALL CENTER AT 1-800-432-4770 A MINIMUM OF 48 HOURS PRIOR TO THE PLANNED EXCAVATION OR CONSTRUCTION DATE TO ARRANGE FOR THE FIELD LOCATION OF BURIED UTILITIES WITHIN THE CONSTRUCTION AREA.
- 8.THE CONTRACTOR SHALL FOLLOW ALL FEDERAL, STATE AND LOCAL RULES, STATUTES, ORDINANCES AND GUIDELINES RELATED TO PERFORMING ALL WORK ASSOCIATED WITH THE PROJECT. OF SPECIAL INTEREST ON THIS PROJECT IS THE REQUIREMENT TO PERFORM TRENCH EXCAVATION AND THE CONTRACTOR'S REQUIREMENT TO PERFORM ALL EXCAVATION IN STRICT ACCORDANCE WITH THE REQUIREMENTS OF THE OCCUPATIONAL SAFETY AND HEALTH ADMINISTRATIONS (OSHA) TRENCH EXCAVATION SAFETY STANDARDS.
- 9.THE CONTRACTOR SHALL PERFORM THE WORK TO MINIMIZE IMPACT AND DAMAGE PRIVATE PROPERTY. DAMAGE TO PRIVATE PROPERTY CAUSED BY THE CONTRACTOR SHALL BE REPAIRED AND RESTORED BY THE CONTRACTOR AT NO ADDITIONAL COST TO THE COUNTY.
- 10.THE WORK IS TO TAKE PLACE WITHIN PUBLIC RIGHT-OF-WAY AND WITHIN PUBLIC ROADWAYS. THE CONTRACTOR SHALL PERFORM WORK TO MINIMIZE IMPACT AND DAMAGE TO PUBLIC ROADWAYS, ROADWAY FEATURES, SIGNS, DRAINAGE FEATURES, PUBLIC AND PRIVATE UTILITIES LOCATED WITHIN THE RIGHT-OF-WAY AND ALL OTHER FEATURES ADJOINING THE WORK AREA. DAMAGE TO PUBLIC RIGHT-OF-WAY, ROADWAY, PUBLIC OR PRIVATE UTILITIES OR OTHER FEATURES LOCATED WITHIN THE MANATEE COUNTY RIGHT-OF-WAY SHALL BE REPAIRED BY THE CONTRACTOR AT NO ADDITIONAL COST TO THE COUNTY.
- 11.THE CONTRACTOR SHALL PRODUCE PRE-CONSTRUCTION VIDEOS OF THE AREA OF CONSTRUCTION PER SECTION 01380 OF THE SPECIFICATIONS PRIOR TO COMMENCING CONSTRUCTION.
- 12.THE CONTRACTOR SHALL PROTECT EXISTING IMPROVEMENTS THAT ARE LOCATED ADJACENT TO THE NEW WORK AND ARE SHOWN TO NOT TO BE RELOCATED.
- 13.THE CONTRACTOR SHALL RELOCATE ALL FACILITIES OR IMPROVEMENTS THAT ARE IN CONFLICT WITH THE NEW WORK AND SUCH RELOCATION SHALL BE IN ACCORDANCE WITH COUNTY OR THE OWNING PARTIES STANDARDS.

BENCHMARKS

BENCHMARK 1-7
SHEET C1
SE CORNER OF 53RD AVE
WAND 26TH ST W

BENCHMARK 1-6
SHEET C2 & C25
SE CORNER OF 55TH AVE W
AND 26TH ST W

BENCHMARK 1-5
SHEET C3
NE CORNER OF 57TH AVE W
AND 26TH ST W

BENCHMARK 2-23
SHEET C15
57TH AVE W BETWEEN 21ST &
22ND ST W

BENCHMARK 2-18
SHEET C19
NW CORNER OF 18TH ST W
AND 57TH AVE W

BENCHMARK 2-15
SHEET C23
SE CORNER OF 15TH ST W
AND 57TH AVE W

BENCHMARK 4-6
SHEET C31
SE CORNER OF 24TH ST W
AND 53RD AVE W

BENCHMARK 4-5
SHEET C31 & C32
SE CORNER OF 22ND ST W
AND 53RD AVE W

BENCHMARK 2-27
NOT ON A SHEET
NW OF INTERSECTION OF 24TH
ST W AND 57TH AVE W

BM	Bench mark
CM	Concrete Monument
IP	Iron Pipe
IR	Iron Rod
HUB	Hub
N&D	Nail & Disk
	Elevation
Parcel ID No.	Parcel ID No.
Lot No.	Lot No.
GW	Guy Wire
PP	Power Pole
LP	Light Pole
MB	Mail Box
SN	Sign

REF	Reflector
SPRK	Sprinkler
GM	Gas Marker
BFP	Back Flow Preventer
BO	Blow Off Valve
FH	Fire Hydrant
WV	Water Valve
RED	Reducer
WM	Water Meter
ARV	Air Release Valve
SMH	Sanitary Sewer Manhole
CO	Sanitary Sewer Clean-out
SB#1	Soil Boring Location
TEL	Telephone Service Box
CPP	Concrete Power Pole

TSB	Traffic Signal Box
WPP	Wood Power Pole
JB	Junction Box
RV	Reclaim Valve
RM	Reclaim Meter
GI	Grote Inlet
CB	Curb Inlet
CI	Catch Basin
	Bush
	Ornamental Tree
	Oak Tree
	Palm Tree
	Pine Tree
	Edge of Vegetation
	Guard Rail

LEGEND

8-FM	Force Main
W	Potable Water
8-SS	Sanitary Sewer
12-SD	Storm Drain
GAS	Gas Line
OH	Overhead Utility
UG	Underground utility
	Edge of Concrete
	Edge of Road
	Ditch-Toe of Slope
	Property Line / Lot Line
	Right of Way

	Headwall
	Drainage Structure
GI	Grote Inlet
	Sewer Flow Direction
CONC	Concrete
ASPH	Asphalt
DRWY	Driveway
SWK	Sidewalk
EP	Edge of Pavement
TB	Top of Bank
R/W	Right of Way
GD-RL	Guard Rail
RMJ	Restrained Mechanical Joint
GV	Gate Valve

PROPOSED

	Water Main
	Water Service
	Proposed Easement
	Fire Hydrant Assembly
	Gate, Plug, or Butterfly Valve
	Sanitary Sewer Manhole
	Blow-off Assembly
	Reducer
	Tee
	Bend (Horizontal)
	Bend (Vertical)
	Plug or Cap
	Master Meter Assembly
	Water Service Line & Meter
	Double Service
	Cross
	CHLORINE INJECTION POINT
	BACTERIOLOGICAL SAMPLE POINT
	RIGHT-OF-ENTRY (ROE) METER REPLACEMENT
	ROE LOCATION & TYPE
	HA2-XX
	HAND AUGER BORING LOCATION

23.THE CONTRACTOR SHALL ESTABLISH A PIPE DRILLING OR LAYING PLAN FOR EACH STREET SEGMENT PRIOR TO CONSTRUCTION. THE DRILLING OR LAYING PLAN SHALL TAKE INTO CONSIDERATION THE ELEVATION OF CROSSING UTILITIES, AS NOTED ABOVE, SUCH THAT THE DEPTH OF THE PIPELINE IS ESTABLISHED TO MINIMIZE DEPTH OF BURY GREATER THAN THREE (3) FEET, AND MINIMIZE ELEVATION CHANGES ALONG THE ALIGNMENT WHILE TAKING INTO CONSIDERATION THE ELEVATION OF CROSSING UTILITIES AND OTHER ROW STRUCTURES, MANATEE COUNTY DEPTH OF BURY STANDARDS AND WATER LINE CONNECTION POINTS. THE CONTRACTOR SHALL INSTALL AUTOMATIC AIR RELEASE VALVES, ON EACH SIDE OF A LOW POINT IN THE LINE, WHEN THE PIPELINE ELEVATION CHANGES WITHIN A STREET SEGMENT BY MORE THAN 3 FEET VERTICALLY WITHIN A 200 LINEAR DISTANCE.

24.THE CONTRACTORS ATTENTION IS DIRECTED TO LOCATIONS WHERE NEW 6 INCH AND 8 INCH PIPE CROSSES UNDER EXISTING ROADWAYS AT VARIOUS LOCATIONS IN THE PROJECT. IN SEVERAL LOCATIONS ON THE DRAWINGS, THESE CROSSING HAVE BEEN SHOWN TO BE CONSTRUCTED WITH DIP. AT THESE LOCATIONS AND AT OTHER LOCATIONS WHERE NEW 6 INCH OR 8 INCH PIPELINES CROSS EXISTING ROADWAYS, THE CONTRACTOR MAY ELECT TO CONSTRUCT THE CROSSING USING DIP USING OPEN CUT CONSTRUCTION OR USING HDPE PIPE USING HDD CONSTRUCTION. IN EITHER CASE, TOTAL PAYMENT FOR THE CROSSING SHALL BE BASED UPON THE TOTAL LENGTH OF PIPE INSTALLED IN ACCORDANCE WITH THE UNIT PRICE BID ITEMS FOR THE WORK

25.RESTRAINED PIPE JOINTS SHALL BE USED AT ALL FITTINGS, BENDS AND VALVES IN ACCORDANCE WITH THE REQUIREMENTS OF MANATEE COUNTY STANDARD DETAILS UG-8, UG-9, UG-10 AND PROJECT SPECIFICATIONS. THRUST BLOCKS AS SHOWN IN COUNTY STANDARD DETAIL UG-7 SHALL ONLY BE USED ONLY WHEN SPECIFICALLY APPROVED BY THE COUNTY OR WHEN SHOWN ON COUNTY STANDARD DETAILS FOR THE PARTICULAR PIPING INSTALLATION IN QUESTION.

26.THE CONTRACTOR IS CAUTIONED TO CAREFULLY COORDINATE THE PIPING MATERIALS USED FOR CONSTRUCTION UNDER PAVEMENT WITH THE CONSTRUCTION METHOD AND MATERIALS THAT ARE ELECTED FOR USE. THE CONTRACTORS ATTENTION IS DIRECTED TO SECTION 02609 INSTALLATION OF PIPELINES PERTAINING TO THIS ISSUE.

27.A LATERAL SEPARATION OF A MINIMUM OF 10 FEET EDGE TO EDGE SHALL BE MAINTAINED BETWEEN NEW WATER MAINS AND SANITARY SEWER GRAVITY LINES OR FORCE MAINS. PLEASE REFER TO THE SPECIFICATION SECTION 02609 INSTALLATION OF PIPELINES FOR SPECIFIC REQUIREMENTS REGARDING PIPELINE INSTALLATION.

28.IF A NEW WATER MAIN PARALLELS A SEWER MAIN WITH LESS THAN 10 FEET OF LATERAL CLEARANCE TO EDGE, THE JOINTS OF THE NEW WATER MAIN SHALL BE STAGGERED WITH THE JOINTS OF THE EXISTING SEWER LINE TO ACHIEVE A MINIMUM 10 FEET OF SEPARATION BETWEEN THE JOINTS OF THE LINES IF POSSIBLE. PLEASE REFER TO THE SPECIFICATION SECTION 02609 INSTALLATION OF PIPELINES FOR SPECIFIC REQUIREMENTS REGARDING PIPELINE INSTALLATION.

29.A LATERAL SEPARATION OF A MINIMUM OF 3 FEET EDGE TO EDGE SHALL BE MAINTAINED BETWEEN NEW WATER MAINS AND STORMWATER SEWERS OR MAINS OR, RECLAIMED WATER MAINS. PLEASE REFER TO THE SPECIFICATION SECTION 02609 INSTALLATION OF PIPELINES FOR SPECIFIC REQUIREMENTS REGARDING PIPELINE INSTALLATION.

30.A VERTICAL CLEARANCE OF NOT LESS THAN 18 INCHES SHALL BE MAINTAINED BETWEEN ALL NEW WATER MAIN CROSSINGS WITH EXISTING SEWER MAINS, RECLAIMED WATER MAINS, STORM SEWERS, SANITARY SERVICE LINES, GAS LINES AND OTHER UTILITIES. PLEASE REFER TO THE SPECIFICATION SECTION 02609 INSTALLATION OF PIPELINES - FOR SPECIFIC REQUIREMENTS REGARDING PIPELINE INSTALLATION.

31.THIS PROJECT WILL REQUIRE THAT EXISTING WATER MAINS BE CONNECTED TO THE NEW WATER MAINS BEING INSTALLED AS A PART OF THIS PROJECT TO MAINTAIN WATER SERVICE TO EXISTING CUSTOMERS. CONTINUOUS WATER SERVICE TO ALL CUSTOMERS WITHIN THE PROJECT AREA SHALL BE PROVIDED EXCEPT FOR THE SCHEDULED CHANGE-OUT OF WATER METERS AND SERVICES AND THE DISCONNECTION AND RECONNECTION OF OTHER WATER MAINS TO THE NEW WATER MAINS BEING CONSTRUCTED AS A PART OF THIS PROJECT. THE CONTRACTOR SHALL PERFORM EXPLORATORY WORK AND COORDINATE THE DISCONNECTION AND RECONNECTION OF WATER SERVICES AND EXISTING WATER MAINS SERVING OTHER CUSTOMERS WITHIN THE TIME FRAME LIMITS ESTABLISHED BY THE COUNTY. THE CONTRACTOR SHALL COMPILE ALL FIELD EXPLORATORY INFORMATION AND CONFIRM THE IMPACTS OF PLANNED DISCONNECTION/RECONNECTION ACTIVITIES PRIOR TO INITIATING WORK TO INSURE THAT WATER SERVICE TO ALL CUSTOMERS IN RESTORED IN A TIME FRAME CONSISTENT WITH THE REQUIREMENTS OF THE PROJECT.

32.THE CONTRACTOR SHALL INSTALL NEW WATER SERVICES, WATER METER BOX ASSEMBLIES AS A PART OF THIS PROJECT, COMPLETE. THE COUNTY WILL PROVIDE NEW METERS FOR THE CONTRACTOR TO INSTALL UNDER THIS PROJECT IN THE NEW METER BOXES. THE CONTRACTOR SHALL REMOVE ALL EXISTING METERS, METER BOXES AND APPURTENANCES PRIOR TO INSTALLING THE NEW WATER METER SYSTEM. THE CONTRACTOR SHALL COORDINATE WITH MIKE HOOEY OF THE COUNTY METER DEPARTMENT (941) 792-8811 PERTAINING TO METER REPLACEMENT. AT THE BEGINNING OF THE PROJECT, THE CONTRACTOR SHALL PROVIDE A LIST TO THE COUNTY OF ALL METERS TO BE REPLACED NOTING THE STREET ADDRESS, SIZE AND SERIAL NUMBER OF THE METER CURRENTLY IN PLACE. THE CONTRACTOR SHALL DEVELOP A SCHEDULE FOR METER REPLACEMENT THAT WILL ASSURE CONTINUOUS WATER SERVICE TO CUSTOMERS WITH SHUT DOWNS REQUIRED FOR METER INSTALLATION LIMITED TO NOT MORE THAN 30 MINUTES. THE CONTRACTOR SHALL NOTIFY THE COUNTY METER DEPARTMENT 2 WORKING DAYS PRIOR TO NEEDING METERS FOR REPLACEMENT AND SHALL PROVIDE THE COUNTY A LIST OF ADDRESSES WHERE METERS WILL BE REPLACED.

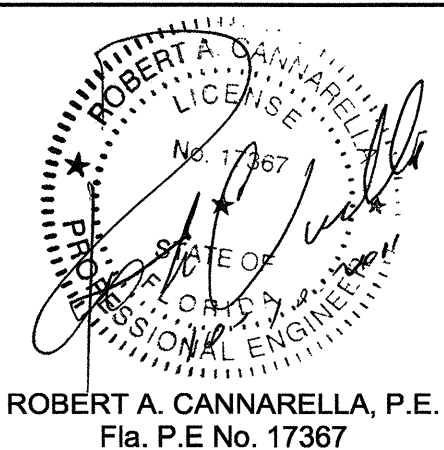
33.MOST NEW WATER METER BOXES WITH METERS WILL BE INSTALLED AT THE SAME LOCATION AS THE EXISTING WATER METERS. MOST METERS ARE LOCATED EITHER WITHIN THE PUBLIC ROW OR NOT MORE THAN 2 TO 3 FEET WITHIN PRIVATE PROPERTY ADJACENT TO THE PUBLIC ROW. FOR THESE LOCATIONS, THE NEW METERS AND METER BOXES WILL BE INSTALLED AT THE SAME LOCATION AS THE EXISTING METERS AND RECONNECTED TO THE EXISTING CUSTOMER SIDE SERVICE PIPING. THERE ARE SEVERAL LOCATIONS ON THE PROJECT WHERE THE EXISTING WATER METERS ARE LOCATED DEEP WITHIN PRIVATE PROPERTY (APPROXIMATELY 4 FEET OR MORE INSIDE THE PROPERTY LINE) AND MUST BE RELOCATED TO A LOCATION WITHIN THE PUBLIC ROW. THESE WORK LOCATIONS WILL REQUIRE THAT A RIGHT-OF-ENTRY APPROVAL BE GRANTED FOR PERFORMING WORK SUBSTANTIALLY WITHIN PRIVATE PROPERTY. IN ADDITION, AT THESE LOCATIONS, CUSTOMER SIDE SERVICE PIPING MODIFICATIONS WILL BE REQUIRED TO RE-PIPE THE CUSTOMER SERVICE FROM THE NEW METER LOCATION TO THE CUSTOMER HOUSE CONNECTION. THE LOCATION WHERE CUSTOMER RIGHT-OF-ENTRY APPROVAL AND CUSTOMER PIPING RELOCATION WILL BE REQUIRED AS NOTED ON THE DRAWINGS. COMPENSATION FOR REPLACEMENT OF METERS AS THESE LOCATIONS SHALL BE IN ACCORDANCE WITH THE SPECIFICATIONS AND THE BID ITEMS ESTABLISHED FOR THESE PROJECT LOCATIONS. THE CONTRACTOR SHALL NOT PERFORM WORK ON RIGHT-OF-ENTRY PROPERTIES UNTIL THE COUNTY HAS PROVIDED THE CONTRACTOR WITH SPECIFIC RIGHT-OF-ENTRY APPROVAL DOCUMENTATION FOR THE LOCATION IN QUESTION.

34.ALL COMPONENTS OF THE NEWLY INSTALLED WATER SYSTEM SHALL BE TESTED IN ACCORDANCE WITH SECTION 02608 TESTING AND INSPECTIONS. TESTING AND INSPECTIONS SHALL INCLUDE COMPACTION TESTING FOR PIPELINE INSTALLATIONS; HYDROSTATIC TESTING OF PIPELINE VALVES AND FITTINGS; BACTERIOLOGICAL TESTING OF PIPING, FITTINGS, VALVES AND APPURTENANCES; TIE-INS WIRE TESTING AND OTHER SUCH TESTS AS REQUIRED BY THE SPECIFICATION AND MANATEE COUNTY STANDARDS. THE CONTRACTOR SHALL PERFORM ALL TESTING AND PROVIDE TESTING RESULTS AS SPECIFIED AND WHEN REQUIRED PRIOR TO PLACING NEW WATER LINE COMPONENTS INTO SERVICE.

35.ALL PIPELINES SHALL BE CLEANED, DISINFECTED AND BACTERIOLOGICAL TESTS OF THE DISINFECTED PIPELINE SHALL BE APPROVED BY THE MANATEE COUNTY DEPARTMENT OF HEALTH BEFORE LINES CAN BE PLACED INTO SERVICE. CHLORINE INJECTION POINTS AND SAMPLING POINTS SHALL BE LOCATED TO COMPLY WITH THE SPECIFICATIONS, MANATEE COUNTY HEALTH DEPARTMENT REQUIREMENTS AND THE REQUIREMENTS OF AWWA C651 LATEST EDITION. THE SPECIFIC LOCATION FOR THE CHLORINE INJECTION POINTS SHOWN ON THE DRAWINGS SHALL BE MODIFIED TO COMPLY WITH THE FOREGOING SPECIFICATIONS, HEALTH DEPARTMENT AND AWWA REGULATIONS AND THE CONTRACTORS SPECIFIC PLAN FOR SEQUENCING CONSTRUCTION OF THE PIPELINES. SAMPLING POINTS FOR BACTERIOLOGICAL TESTING WILL BE ESTABLISHED BY THE MANATEE COUNTY HEALTH DEPARTMENT BASED UPON THE CONTRACTORS PIPE INSTALLATION PLAN AND THE FOREGOING REQUIREMENTS. THE CONTRACTOR SHALL INSTALL AND REMOVE SAMPLING POINTS REQUIRED TO PERFORM BACTERIOLOGICAL SAMPLING OF EACH PIPE SEGMENT AT THE LOCATIONS DEFINED BY THE MANATEE COUNTY HEALTH DEPARTMENT AS A PART OF THE PROJECT.

36.ALL ABANDONED WATER MAINS SHALL BE FILLED WITH SAND/CEMENT GROUT IN ACCORDANCE WITH MANATEE COUNTY STANDARDS. ALL ABANDONED WATER MAINS SHALL BE DISCONNECTED FROM EXISTING ACTIVE WATER MAINS BACK TO THE NEAREST ISOLATION VALVE. THE DISCHARGE SIDE OF EXISTING VALVES WHICH REMAIN CONNECTED TO EXISTING ACTIVE WATER MAINS SHALL BE PLUGGED WITH A PLUG SUITABLE FOR LINE TEST PRESSURE AS REQUIRED BY THE CONTRACT DOCUMENTS FOR NEW PIPING. (FIELD TESTING WILL NOT BE REQUIRED). VALVE BOXES SHALL BE REMOVED ON VALVES WHICH ARE PLUGGED AND REMOVED FROM SERVICE. ALL EXISTING FIRE HYDRANTS CONNECTED TO EXISTING WATER LINES WHICH ARE TO BE REMOVED FROM SERVICE SHALL BE REMOVED. CLOSE FIRE HYDRANT ISOLATION VALVES; REMOVE VALVE BOX; PLUG OUTLET OF ISOLATION VALVE; REMOVE FIRE HYDRANT LATERAL TO HYDRANT; REMOVE FIRE HYDRANT ASSEMBLY COMPLETE. IT SHALL BE THE RESPONSIBILITY OF THE CONTRACTOR TO PROPERLY DISPOSE OF SECTIONS OF ABANDONED WATER MAIN, AND ALL OTHER MATERIALS AND APPURTENANCES, WHICH MUST BE CUT-OUT AND REMOVED FROM THE PROJECT SITE. DISPOSAL OF ALL PIPE, PIPELINE MATERIALS, EXCESS EXCAVATION AND OTHER ABANDONED MATERIALS SHALL BE IN ACCORDANCE WITH APPROPRIATE ENVIRONMENTAL AND REGULATORY REQUIREMENTS FOR THE MATERIALS IN QUESTION.

37.THE CONTRACTOR SHALL MAINTAIN AS-BUILT DRAWING OF THE WORK AS CONSTRUCTED. AS-BUILT DRAWINGS SHALL INCLUDE THE LOCATION OF ABANDONED WATER MAIN CUT AND PLUG POINTS. AS BUILT DRAWINGS SHALL BE ANNOTED EACH DAY AS THE WORK PROCEEDS AND SHALL BE AVAILABLE TO THE COUNTY PROJECT MANAGER FOR REVIEW ON AN ONGOING BASIS. AS BUILT DRAWINGS SHALL PROVIDE THE HORIZONTAL AND VERTICAL INSTALLED LOCATION OF ALL NEW PIPELINES, FITTINGS, VALVES SERVICE LINES AND WATER SYSTEM APPURTENANCES REFERENCED TO FIXED SURFACE FEATURES THAT ARE SHOWN ON THE CONSTRUCTION DRAWINGS AND/OR RIGHT-OF-WAY LINES, PROPERTY CORNERS OR OTHER SURVEYED POINTS. THE CONTRACTOR SHALL ABLE TO PRESENT THE RECORD DRAWINGS TO THE COUNTY PROJECT MANAGER ON DEMAND AS THE WORK PROCEEDS.



DSGN	BJK				
DR	BJK				
CHK	RAC				
APVD	RAC	NO.	DATE		

BID DOCUMENTS

VERIFY SCALE
BAR IS ONE INCH ON ORIGINAL DRAWING.
0" = 1"
IF NOT ONE INCH ON THIS SHEET, ADJUST SCALES ACCORDINGLY.

CH2MHILL

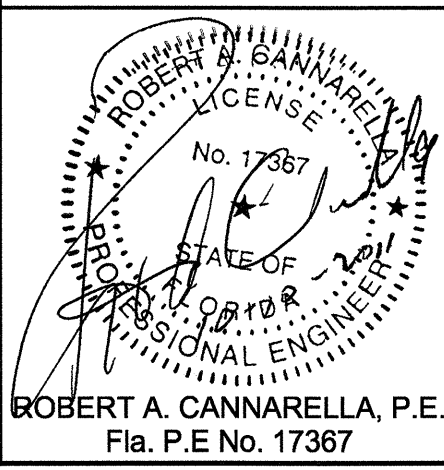
4350 WEST CYPRESS STREET SUITE 600
TAMPA, FLORIDA 33607-4155
LB 0002934 AA C000656

MANATEE COUNTY
SUBURBAN SYSTEM
WATER LINE REPLACEMENT PROJECT
PHASE 2
MANATEE COUNTY, FLORIDA
PROJECT NO. 60747.70

LEGEND AND NOTES

SHEET	G2
DWG	G2NOTES.DWG
DATE	JULY 2011
PROJ	386879.WM

W:\Manatee County Waterline\Drawings\Tlcover.dwg Plotted: 2/18/2009 0:13 pm By: bklein1 Model Plot Scale: 1"=10' Xref: Dwg's



DSGN	BJK		
DR	BJK		
CHK	RAC		
APVD	RAC	NO.	DATE

BID DOCUMENTS

REVISION

BY

APVD

VERIFY SCALE
BAR IS ONE INCH ON
ORIGINAL DRAWING.
0 1"
IF NOT ONE INCH ON
THIS SHEET, ADJUST
SCALES ACCORDINGLY.

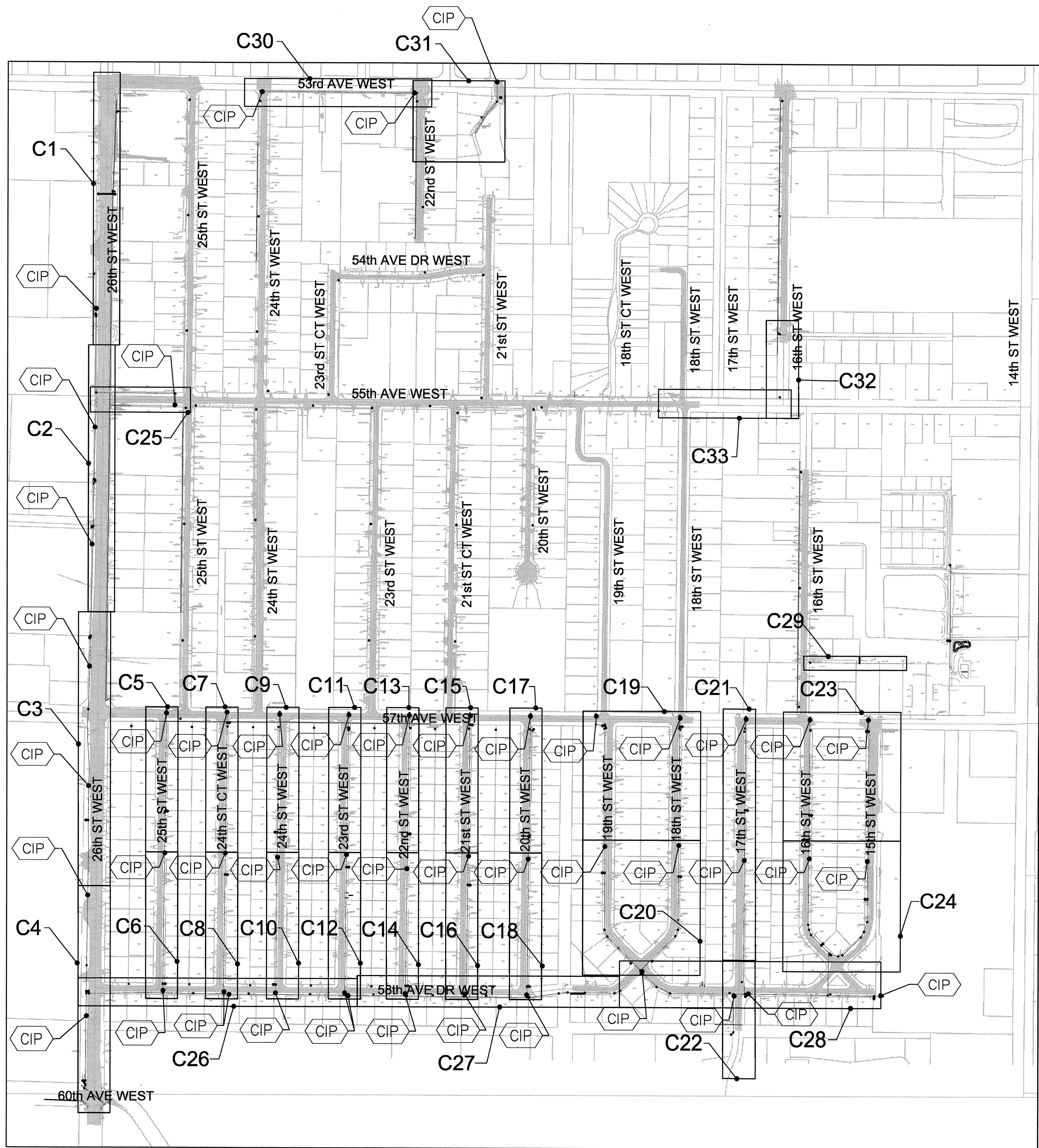
CH2MHILL
4350 WEST CYPRESS STREET SUITE 600
TAMPA, FLORIDA 33607-4155
LB 0002934 AA C000656

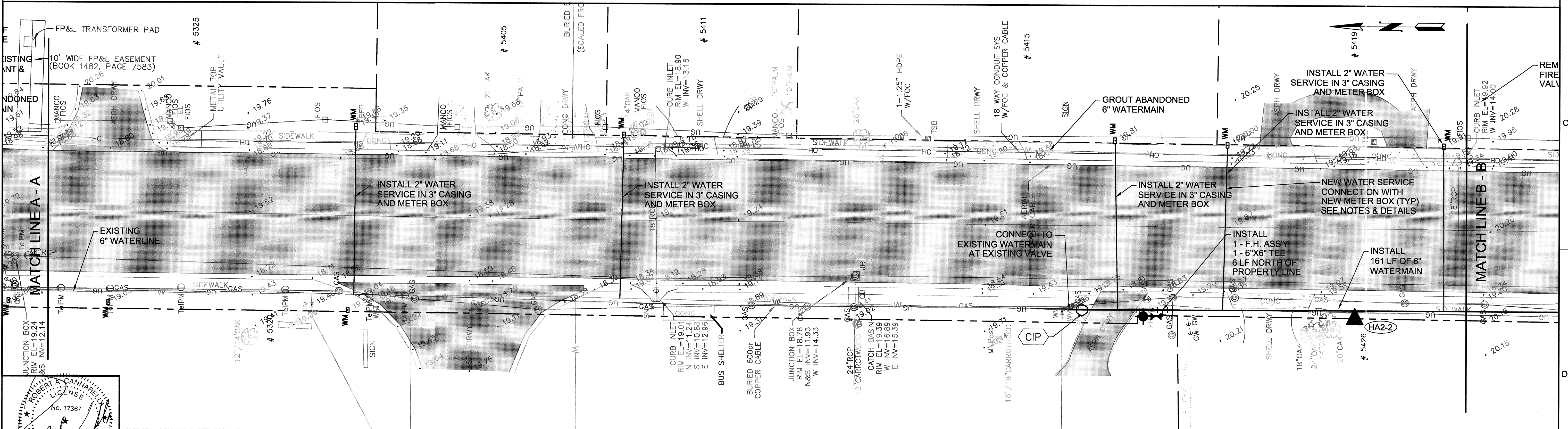
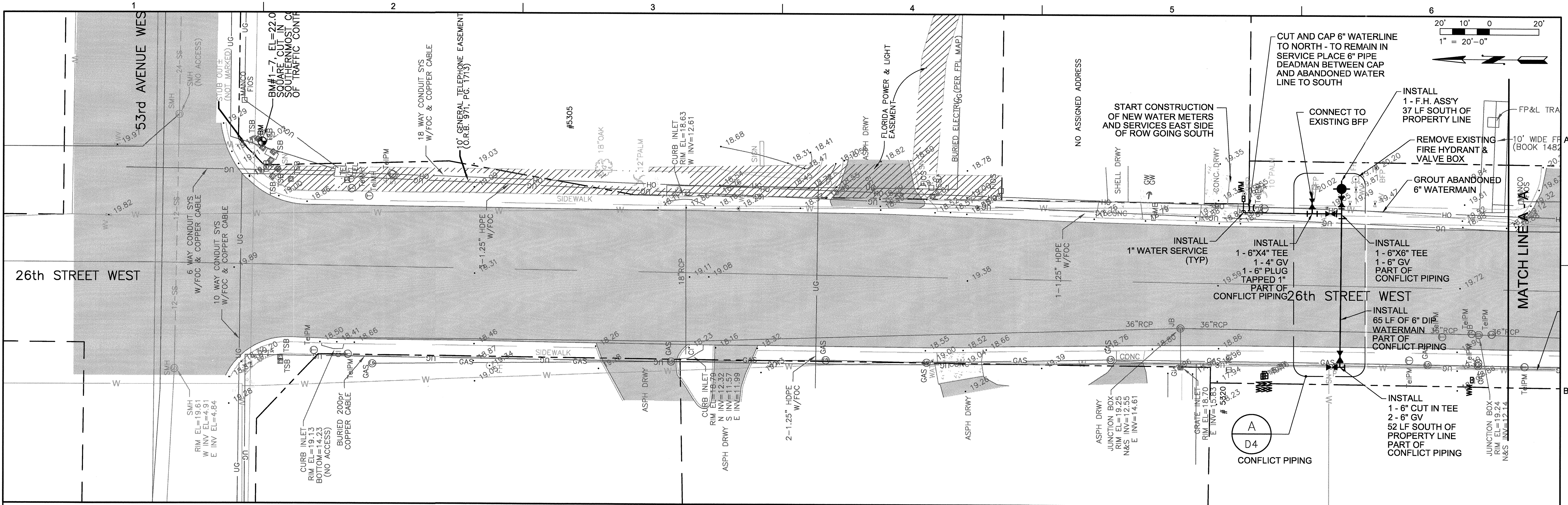
MANATEE COUNTY
SUBURBAN SYSTEM
WATER LINE REPLACEMENT PROJECT
PHASE 2
MANATEE COUNTY, FLORIDA
PROJECT No. 60747.70

KEY PLAN

SHEET	G3
DWG	G3.DWG
DATE	JULY 2011
PROJ	386879.WM

CIP CHLORINE INJECTION POINT





ROBERT A. CANNARELLA, P.E.
Fla. P.E. No. 17367

DSGN	BJK				
DR	BJK				
CHK	RAC				
APVD	RAC				

BID DOCUMENTS

VERIFY SCALE
BAR IS ONE INCH ON ORIGINAL DRAWING.
IF NOT ONE INCH ON THIS SHEET, ADJUST SCALES ACCORDINGLY.

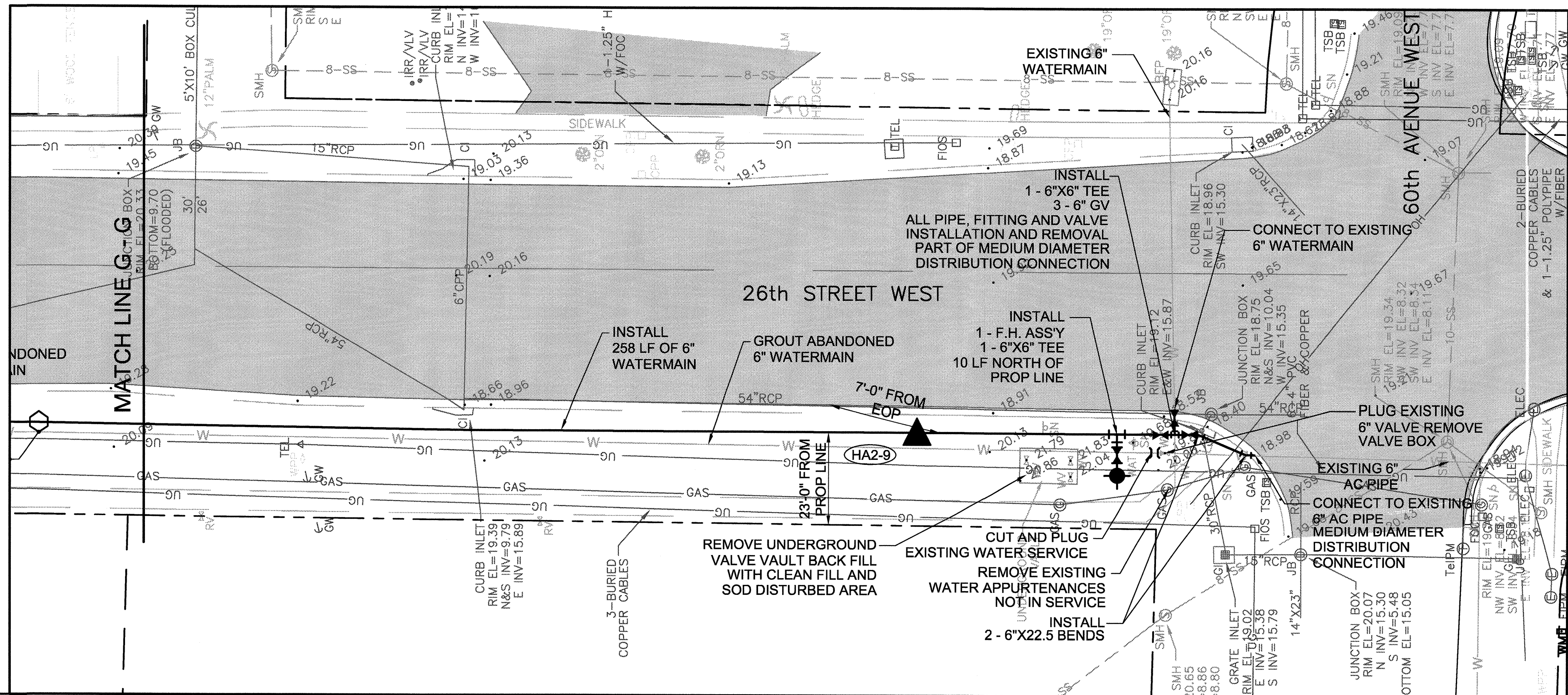
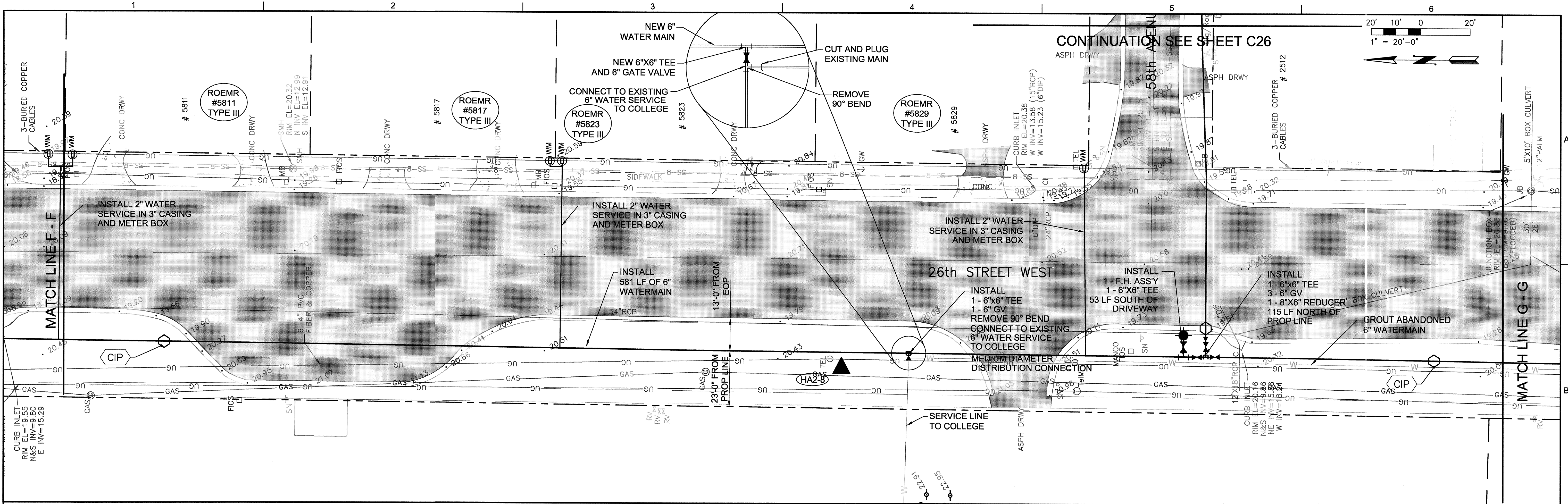
CH2MHILL
4350 WEST CYPRESS STREET SUITE 600
TAMPA, FLORIDA 33607-4155
LB 0002934 AA C000656

MANATEE COUNTY
SUBURBAN SYSTEM
WATER LINE REPLACEMENT PROJECT
PHASE 2
MANATEE COUNTY, FLORIDA
PROJECT No. 60747.70

PLAN SHEET WATER LINE
26th ST W FROM 53rd AVE W TO 5419

SHEET	C1
DWG	C1.DWG
DATE	JULY 2011
PROJ	386879.WM

W:\Manatee County Waterline\Drawings\11cover.dwg Plotted: 2/18/2009 04:13 pm By: bkienl Model Plot Scale: 1=10 X-ref Dwg's:



ROBERT A. CANNARELLA, P.E.
FLA. P.E. No. 17367

DSGN	BJK				
DR	BJK				
CHK	RAC				
APVD	RAC	NO.	DATE	REVISION	BY

BID DOCUMENTS

VERIFY SCALE
BAR IS ONE INCH ON
ORIGINAL DRAWING.
0" = 1"
IF NOT ONE INCH ON
THIS SHEET, ADJUST
SCALES ACCORDINGLY.

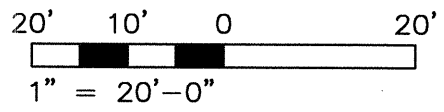
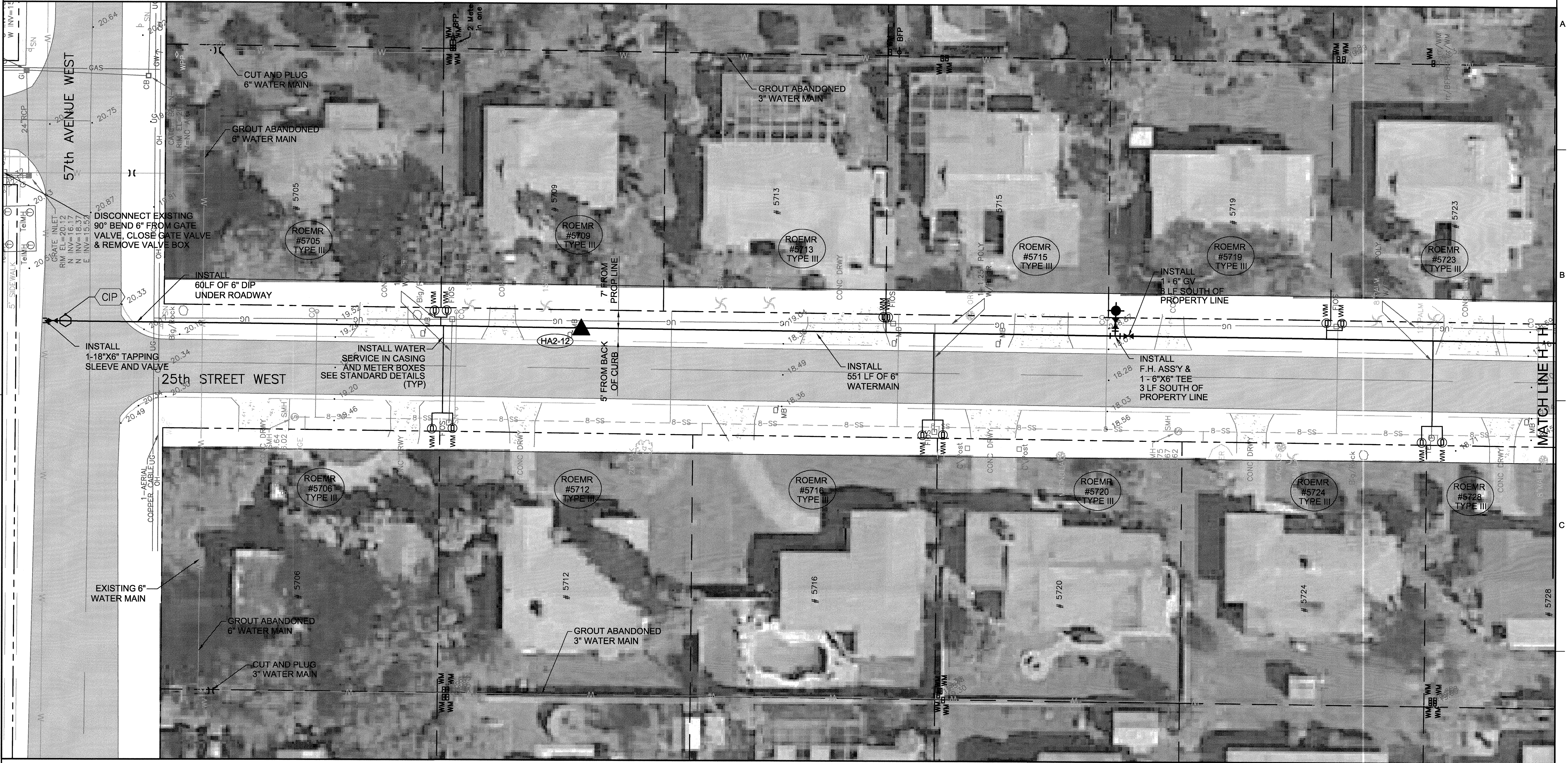
CH2MHILL
4350 WEST CYPRESS STREET SUITE 600
TAMPA, FLORIDA 33607-4155
LB 0002934 AA C000656

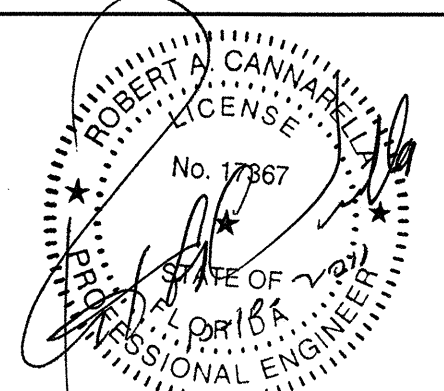
MANATEE COUNTY
SUBURBAN SYSTEM
WATER LINE REPLACEMENT PROJECT
PHASE 2
MANATEE COUNTY, FLORIDA
PROJECT No. 60747.70

PLAN SHEET WATER LINE
26th ST W FROM 5811 TO

SHEET	C4
DWG	C4.DWG
DATE	JULY 2011
PROJ	386879.WM

W:\Manatee County Waterline\Drawings\Ticover.dwg Plotted: 2/18/2009 0:13 pm By: bkleinl Model Plot Scale: 1"=10' Xref Dwg's:





ROBERT A. CANNARELLA, P.E.
Fla. P.E. No. 17367

DSGN	BJK		
DR	BJK		
CHK	RAC		
APVD	RAC		

NO.		DATE	REVISION		BY	APVD

BID DOCUMENTS

VERIFY SCALE
BAR IS ONE INCH ON ORIGINAL DRAWING.
0 1"
IF NOT ONE INCH ON THIS SHEET, ADJUST SCALES ACCORDINGLY.

CH2MHILL
4350 WEST CYPRESS STREET SUITE 600
TAMPA, FLORIDA 33607-4155
LB 0002934 AA C000656

MANATEE COUNTY
SUBURBAN SYSTEM
WATER LINE REPLACEMENT PROJECT
PHASE 2
MANATEE COUNTY, FLORIDA
PROJECT No. 60747.70

PLAN SHEET WATER LINE
25th ST W FROM 57th AVE W TO 5724

SHEET	C5
DWG	C5.DWG
DATE	JULY 2011
PROJ	386879.WM