

# SUBMITTAL FOR APPROVAL



## Construction Drawing Manatee County Water Treatment

66000-0655 REV A

**Project ID: 104474**

**Release Date: 12/17/2025**

For Customer Completion:

- Approved
- Approved as Noted
- Revise and Resubmit
- Not Approved
- For Record

---

Reviewer Name

Reviewer Title

Review Date

## Disclaimer

PowerSecure, Inc. ("PowerSecure") provides the following submittal pursuant to its contractual agreement with Florida Power and Light Lake Manatee Water Plant ("Customer"). This submittal was prepared based on the information contained in PowerSecure submittal drawings.

Upon approval, PowerSecure will proceed with manufacturing the equipment as shown in this submittal. The enclosed drawings show the dimensions of the equipment that will be manufactured. This submittal does not reflect all installation requirements for the equipment or required construction practices, means, or methods. To the extent this submittal was developed based on Customer-supplied information or design documents, PowerSecure shall not be responsible for errors or omissions in such Customer-supplied data. To the extent PowerSecure is not installing the equipment covered by this submittal, the installing contractor shall be responsible for installing the equipment in accordance with industry standards and the installation manuals, including without limitation verifying all field conditions and site measurements prior to installation.

Any comments, requests, or changes after PowerSecure, Inc. receives a "Reviewed" or "Approved" stamp require an official change order from Customer and may result in a change to PowerSecure's contract price or time for performance. Any requests for acceleration to deliverables requires an additional Purchase Order and is not guaranteed. For submittals marked "Revise and Resubmit" or "Approved as Noted" etc., PowerSecure will review all notes and provide feedback in written form or via meeting minutes.













LEGEND	
—	EXISTING WIRING/EQUIPMENT
—	NEW WIRING/EQUIPMENT
—	NEW CONTROL WIRING/EQUIPMENT
—	WIRING/EQUIPMENT BY OTHERS
—	WIRING/EQUIPMENT TO BE REMOVED BY OTHERS
—	TEMPORARY WIRING/EQUIPMENT

LOAD DATA	
12 MONTH PEAK DEMAND	6,840kW
NEC 220.87 DEMAND	1.25 x 6,840kW = 8,550kW
GENERATOR CAPACITY	9,375kW

AVAILABLE FAULT CURRENT CALCULATIONS	
GENERATOR(S)	13,782A
UTILITY (SEC)	XX,XXXA
MAX	XX,XXXA

A/E/C:

NOTES:

**CONFIDENTIAL & PROPRIETARY**

REV.	DATE	DESCRIPTION

DWN. BY	CHK. BY
ST	CH

PERMIT/SEAL:

**PRELIMINARY**  
NOT FOR CONSTRUCTION

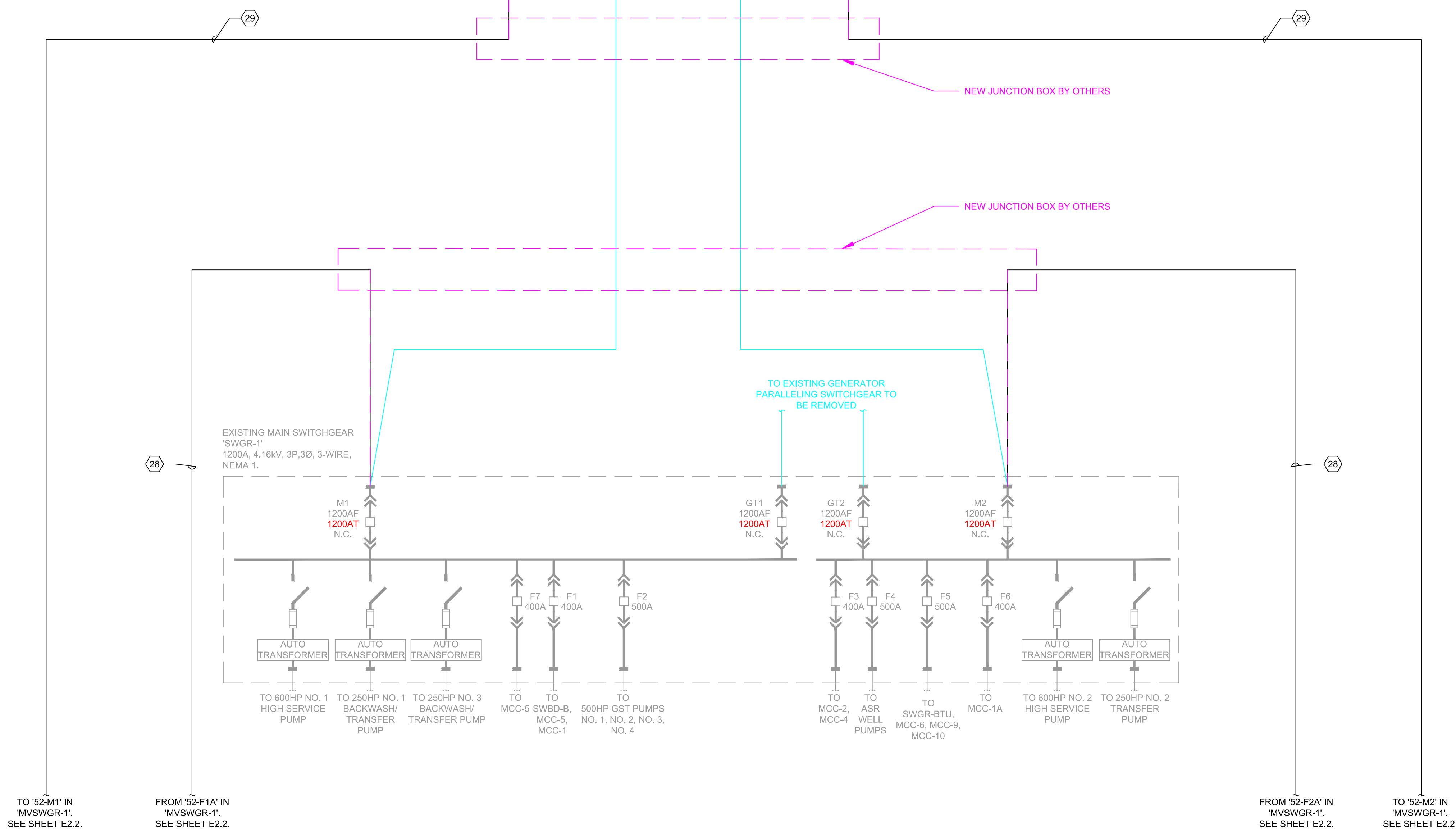
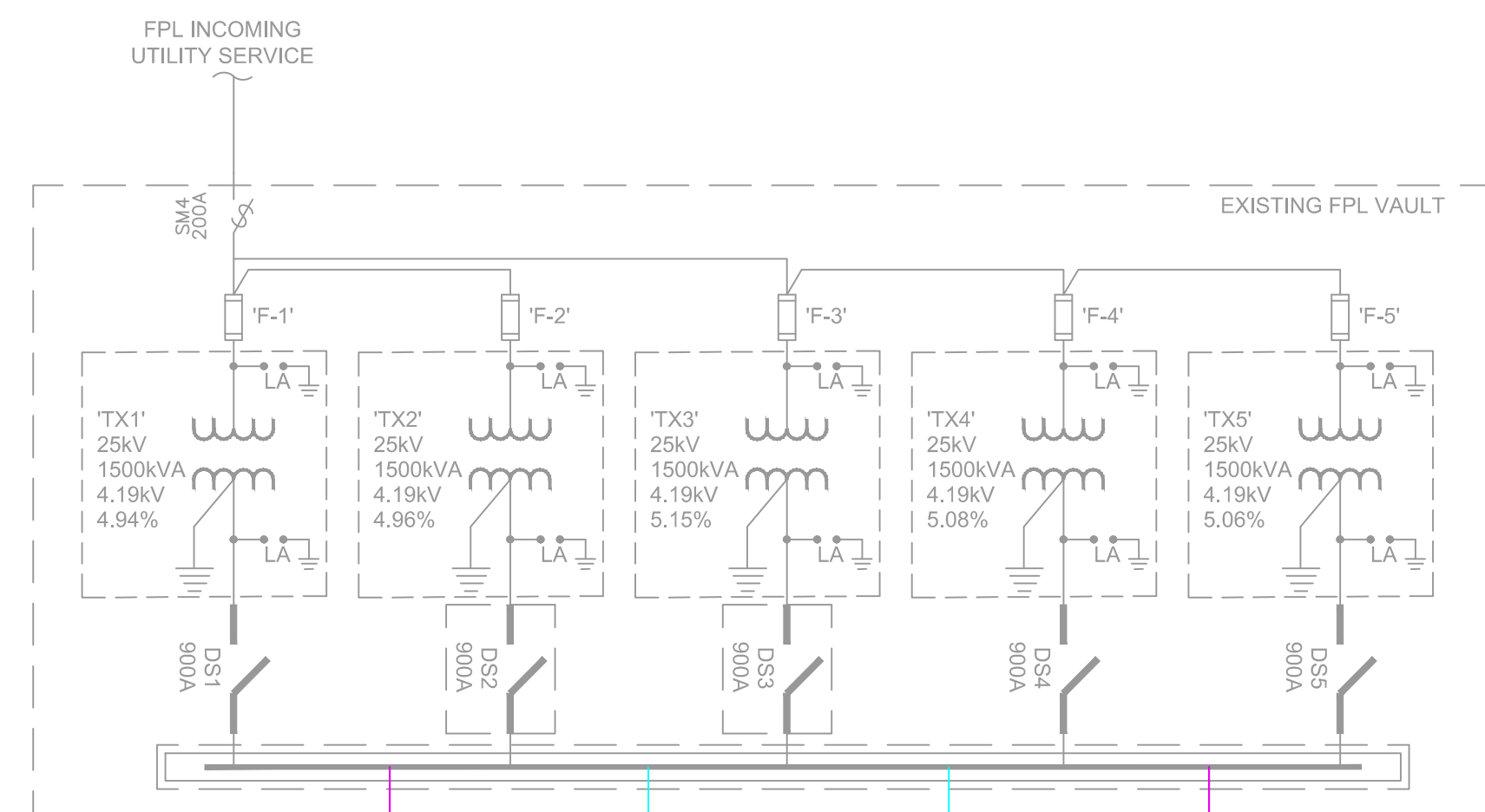
PROJECT:  
  
MANATEE COUNTY WTP  
17915 WATER LINE SERVICE RD.  
BRADENTON, FL, 34212

PROJECT NUMBER: 104474

TITLE:  
ELECTRICAL DISTRIBUTION  
DIAGRAM - EXISTING 'SWGR-1'

DATE: DECEMBER 17, 2025  
DRAWING:

E2.1



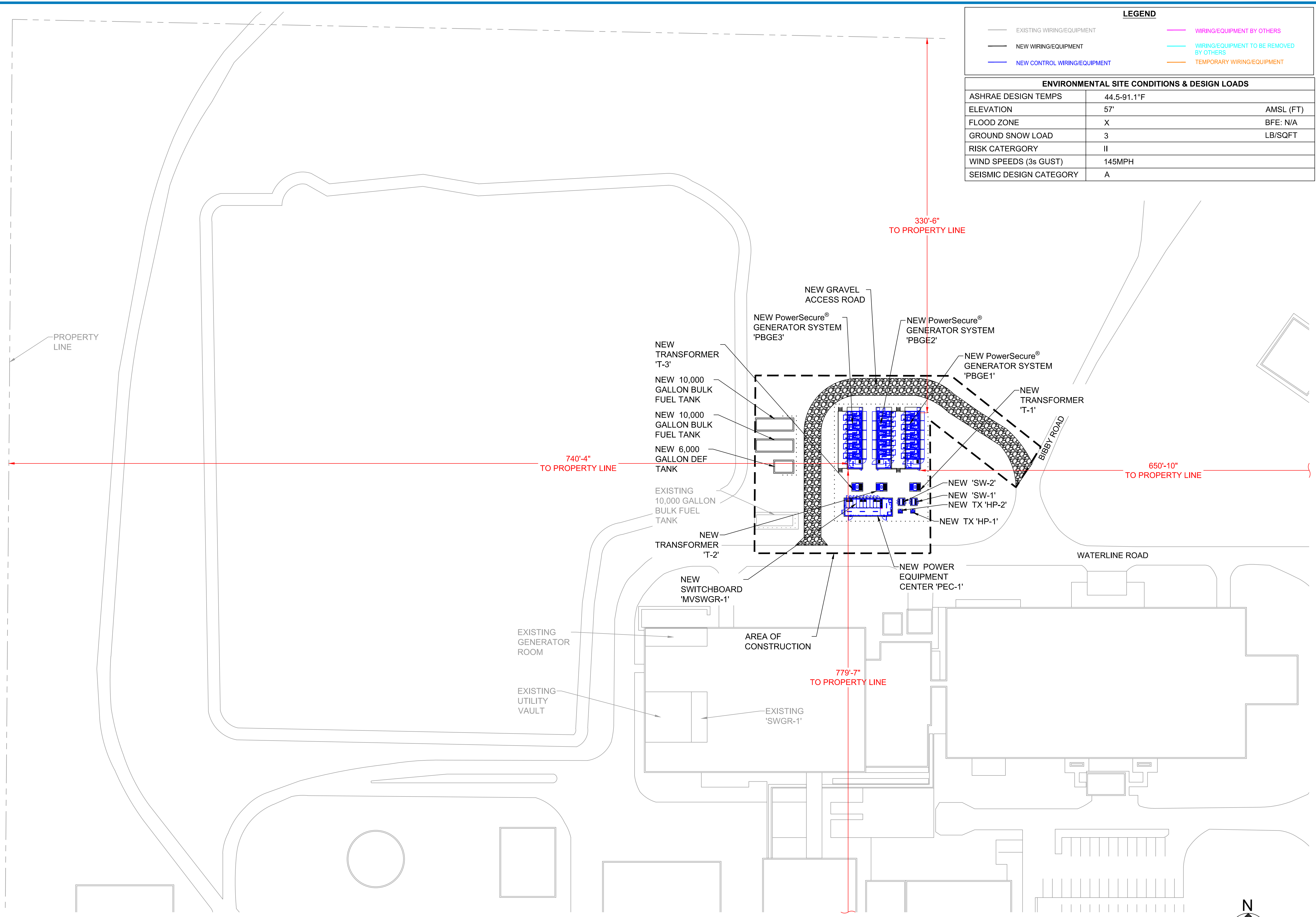
Plot Date: 12/17/2025





ENVIRONMENTAL SITE CONDITIONS & DESIGN LOADS	
ASHRAE DESIGN TEMPS	44.5-91.1°F
ELEVATION	57' AMSL (FT)
FLOOD ZONE	X BFE: N/A
GROUND SNOW LOAD	3 LB/SQFT
RISK CATERGORY	II
WIND SPEEDS (3s GUST)	145MPH
SEISMIC DESIGN CATEGORY	A

LEGEND	
	EXISTING WIRING/EQUIPMENT
	NEW WIRING/EQUIPMENT
	NEW CONTROL WIRING/EQUIPMENT
	WIRING/EQUIPMENT BY OTHERS
	WIRING/EQUIPMENT TO BE REMOVED BY OTHERS
	TEMPORARY WIRING/EQUIPMENT



A/E/C:

NOTES:  
**CONFIDENTIAL & PROPRIETARY**

REV.	DATE	DESCRIPTION

DWN. BY	CHK. BY
ST	CH

PERMIT/SEAL:  
**PRELIMINARY**  
NOT FOR CONSTRUCTION

PROJECT:  
MANATEE COUNTY WTP  
17915 WATER LINE SERVICE RD.  
BRADENTON, FL, 34212

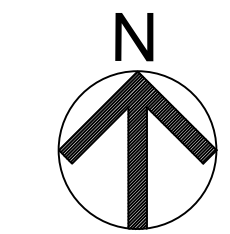
PROJECT NUMBER: 104474

TITLE:  
SITE REFERENCE PLAN

DATE: DECEMBER 17, 2025  
DRAWING:

E3

**SITE REFERENCE PLAN**  
SCALE: 1"=40'



Plot Date: 12/17/2025



**66000-0655 REV A**



**PowerSecure**

**DECEMBER 2025**