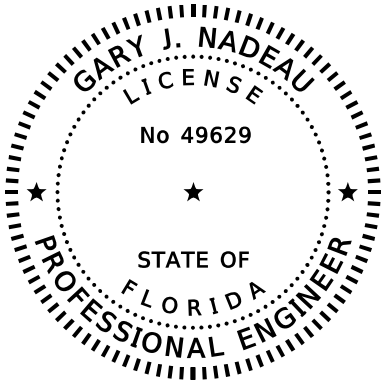


CIP UTILITIES: POTABLE, RECLAIMED, SEWER

ITEM NO.	ITEM DESCRIPTION	UNIT	PROJECT QUANTITY
I. WATER IMPROVEMENTS			
1	MOBILIZATION AND MOT (WATER)	LS	1
2	UTILITY RECORD DRAWINGS (WATER)	LS	1
3	WATER VALVE TO BE ADJUSTED TO GRADE	EA	22
4	8" DI CLASS 350 PIPE WATER MAIN (OPEN CUT)	LF	217
5	8" DI FITTING - 45 DEGREE BEND MJ (WATER)	EA	12
6	CUT AND CONNECT TO EXISTING WATER MAIN (INCLUDES TEMP. SHUTDOWN)	EA	6
7	REMOVE EXISTING 8" WATER MAIN	LF	213
8	WATER SERVICE ASSEMBLY	EA	1
9	AIR RELEASE VALVE ASSEMBLY (WATER)	EA	1
10	WATER METER TO BE ADJUSTED TO GRADE	EA	2
11	8" X 2" TAPPING SLEEVE WITH 2" VALVE (WATER)	AS	1
12	FIRE HYDRANT ASSEMBLY (RELOCATION)	EA	2
13	FIRE HYDRANT ASSEMBLY TO BE ADJUSTED TO PROP. GRADE	EA	1
14	METER (WATER)	EA	7
15	8" GATE VALVE (WATER)	EA	2
16	6" GATE VALVE (WATER)	EA	3
17	REMOVE GATE VALVE (WATER)	EA	1
18	BACKFLOW ASSEMBLY	EA	2
48	6" DI CLASS 350 PIPE WATER MAIN (OPEN CUT)	LF	215
49	6" C900 DR-18 PVC WATER MAIN (OPEN CUT)	LF	366
50	4" DI CLASS 350 PIPE WATER MAIN (OPEN CUT)	LF	126
51	MOBILIZATION AND MOT (WASTEWATER)	LF	45
52	MOBILIZATION AND MOT (WASTEWATER)	LF	59
53	GROUT FILL & ABANDON EXISTING PIPELINES	CY	5.0
54	6" DI FITTING - 45 DEGREE BEND MJ (WATER)	EA	6
55	4" DI FITTING - 22.5 DEGREE BEND MJ (WATER)	EA	2
56	2" GATE VALVE (WATER)	EA	1
57	8" X 6" TEE FITTING (WATER)	EA	1
58	6" X 6" TEE FITTING (WATER)	EA	1
59	6" X 4" DI REDUCER (WATER)	EA	1
60	6" DI CAPS (WATER)	EA	2
61	4" DI CAP WITH 2" THREADED COUPLING	EA	1
62	2" BLOW OFF ASSEMBLY (WATER)	EA	1
63	SINGLE WATER SERVICE WITH RPZ	EA	6
64	DOUBLE WATER SERVICE WITH RPZ	EA	3
65	6" FIRE HYDRANT ASSEMBLY	EA	1
66	FIRE HYDRANT ASSEMBLY (REMOVE)	EA	1
II. WASTEWATER IMPROVEMENTS			
19	MOBILIZATION AND MOT (WASTEWATER)	LS	1
20	UTILITY RECORD DRAWINGS (WASTEWATER)	LS	1
21	SANITARY VALVE TO BE ADJUSTED TO GRADE	EA	1
22	SANITARY VALVE TO BE ADJUSTED TO GRADE	EA	1
23	6" C900 DR-18 PVC FORCE MAIN (OPEN CUT)	LF	53
24	6" C900 DR-18 PVC FORCE MAIN IN 12" PVC CASING (OPEN CUT)	LF	256
25	6" DI FITTING - 45 DEG. BEND MJ (WASTEWATER)	EA	8
26	CUT AND CONNECT TO EXISTING FORCE MAIN (INCLUDES BYPASSING)	EA	4
27	6" SANITARY SEWER VERTICAL ADJUSTMENT	EA	8
28	6" SANITARY SEWER VERTICAL ADJUSTMENT	EA	2
29	REMOVE EXISTING 6" FORCE MAIN	LF	302
30	SANITARY SERVICE ASSEMBLY	EA	1
31	6" X 2" TAPPING SLEEVE WITH 2" VALVE (WASTEWATER)	AS	1

ITEM NO.	ITEM DESCRIPTION	UNIT	PROJECT QUANTITY
III. RECLAIMED WATER IMPROVEMENTS			
32	MOBILIZATION AND MOT (RECLAIM)	LS	1
33	UTILITY RECORD DRAWINGS (RECLAIM)	LS	1
34	RECLAIM VALVE TO BE ADJUSTED TO GRADE	EA	8
35	12" DI CLASS 350 PIPE RECLAIM MAIN (OPEN CUT)	LF	238
36	8" DI CLASS 350 PIPE RECLAIM MAIN (OPEN CUT)	LF	40
37	12" DI FITTING - 45 DEG. BEND MJ (RECLAIM)	EA	15
38	8" DI FITTING - 45 DEG. BEND MJ (RECLAIM)	EA	4
39	12" GATE VALVE (RECLAIM)	EA	3
40	8" GATE VALVE (RECLAIM)	EA	1
41	REMOVE GATE VALVE (RECLAIM)	EA	4
42	CUT AND CONNECT TO EXISTING RECLAIM WATER MAIN (INCLUDES TEMP. SHUTDOWN)	EA	9
43	REMOVE EXISTING 12" RECLAIM WATER MAIN	LF	205
44	REMOVE EXISTING 8" RECLAIM WATER MAIN	LF	40
45	RECLAIM SERVICE ASSEMBLY	EA	1
46	AIR RELEASE VALVE ASSEMBLY (RECLAIM)	EA	2
47	12" X 2" TAPPING SLEEVE WITH 2" VALVE (RECLAIM)	AS	1
67	6" C900 DR-18 PVC RECLAIM MAIN (OPEN CUT)	LF	4
68	4" DI CLASS 350 PIPE RECLAIM MAIN (OPEN CUT)	LF	34
69	1" RECLAIM ADJUSTMENT	EA	2
70	6" GATE VALVE (RECLAIM)	EA	1
71	4" GATE VALVE (RECLAIM)	EA	1
72	12" X 6" TEE FITTING (RECLAIM)	EA	1
73	12" X 4" TEE FITTING (RECLAIM)	EA	1
74	6" DI CAP (RECLAIM)	EA	1



THIS SHEET HAS BEEN DIGITALLY
SIGNED AND SEALED BY:

ON THE DATE ADJACENT TO THE SEAL

PRINTED COPIES OF THIS DOCUMENT ARE
NOT CONSIDERED SIGNED AND SEALED AND
THE SIGNATURE MUST BE VERIFIED
ON THE ELECTRONIC DOCUMENTS.

KIMLEY-HORN AND ASSOCIATES, INC.
1800 SECOND STREET, SUITE 900
SARASOTA, FL 34236
GARY J. NADEAU, P.E. NO. 49629

THE ABOVE NAMED PROFESSIONAL ENGINEER SHALL BE RESPONSIBLE FOR THE
FOLLOWING REVISION IN ACCORDANCE WITH RULE 61G15-23.004, F.A.C.

UTILITY RELOCATION AND REVISION	10/14/25 SK
COUNTY UTILITY RELOCATION COMMENTS	10/20/25 JW
No.	REVISIONS
	DATE
	BY

Kimley»Horn

© 2025 KIMLEY-HORN AND ASSOCIATES, INC.
1800 SECOND STREET, SUITE 900, SARASOTA, FL 34236
PHONE: 941-379-7600
WWW.KIMLEY-HORN.COM

KHA PROJECT 148400070
DATE 10/14/2025
SCALE AS SHOWN
DESIGNED BY
DRAWN BY
CHECKED BY

MANATEE COUNTY



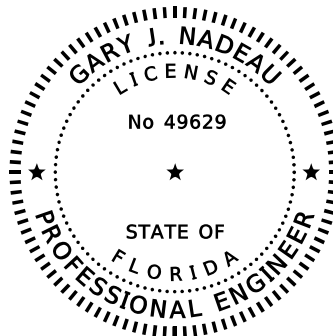
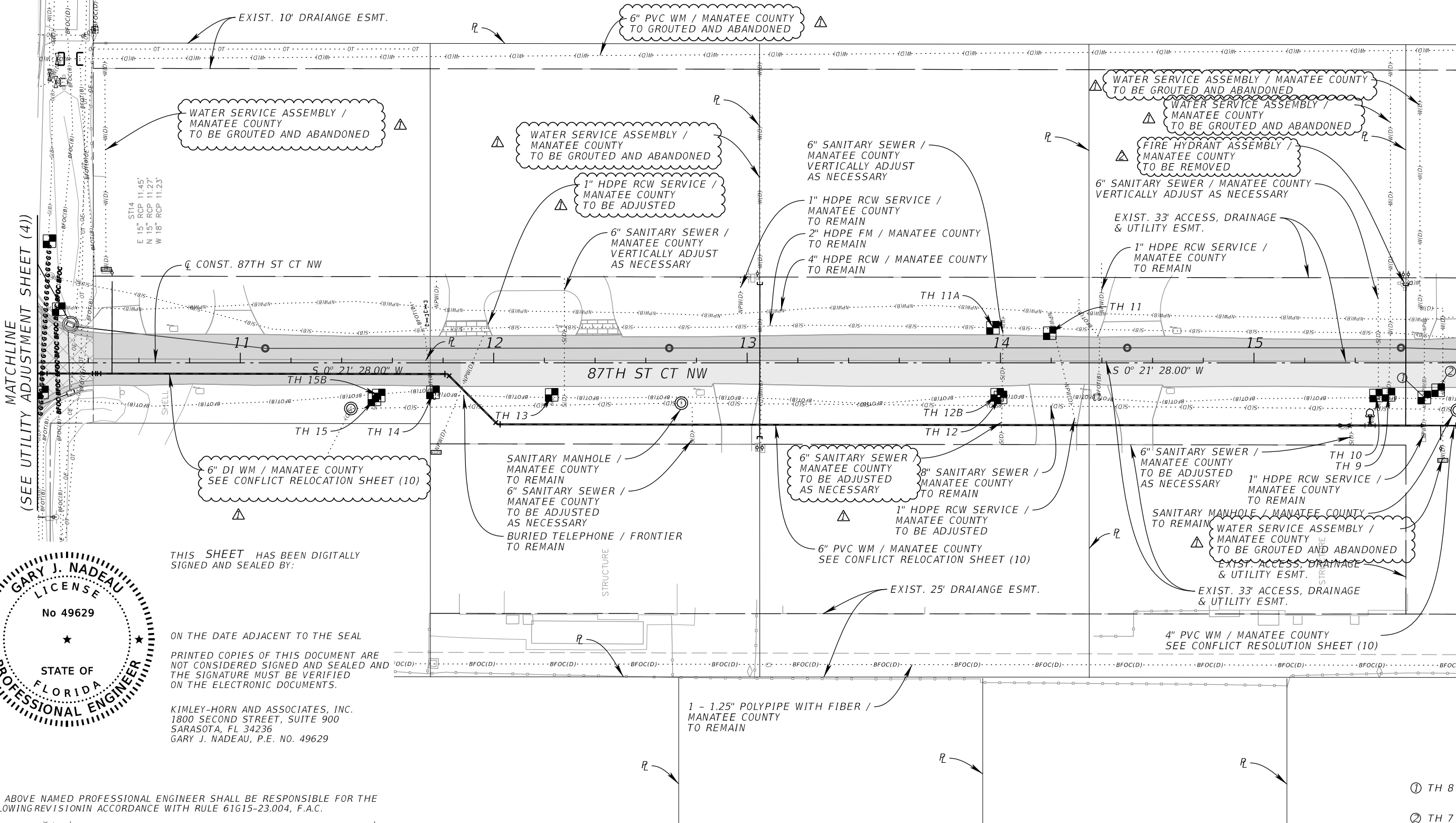
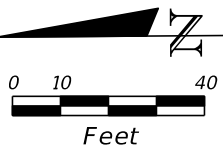
9TH AVENUE NW

LICENSED PROFESSIONAL
JORDAN E. LEEP, P.E. FL LICENSE NUMBER 76102
FL DATE:

SUMMARY OF PAY ITEMS

SHEET NUMBER

4



THIS SHEET HAS BEEN DIGITALLY SIGNED AND SEALED BY:

ON THE DATE ADJACENT TO THE SEAL

PRINTED COPIES OF THIS DOCUMENT ARE NOT CONSIDERED SIGNED AND SEALED AND THE SIGNATURE MUST BE VERIFIED ON THE ELECTRONIC DOCUMENTS.

KIMLEY-HORN AND ASSOCIATES, INC.
1800 SECOND STREET, SUITE 900
SARASOTA, FL 34236
GARY J. NADEAU, P.E. NO. 49629

THE ABOVE NAMED PROFESSIONAL ENGINEER SHALL BE RESPONSIBLE FOR THE FOLLOWING REVISION IN ACCORDANCE WITH RULE 61G15-23.004, F.A.C.

	UTILITY RELOCATION AND REVISION			10/14/25	SK
	COUNTY UTILITY RELOCATION COMMENTS			10/20/25	JW
No.	REVISIONS	DATE	BY		



© 2025 KIMLEY-HORN AND ASSOCIATES, INC.
1800 SECOND STREET, SUITE 900, SARASOTA, FL 34236
PHONE: 941-379-7600
WWW.KIMLEY-HORN.COM

KHA PROJECT
148400070
DATE
10/14/2025
SCALE AS SHOWN
DESIGNED BY
DRAWN BY
CHECKED BY



9TH AVENUE NW

MANATEE COUNTY

LICENSED PROFESSIONAL

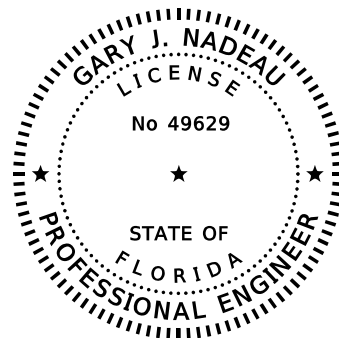
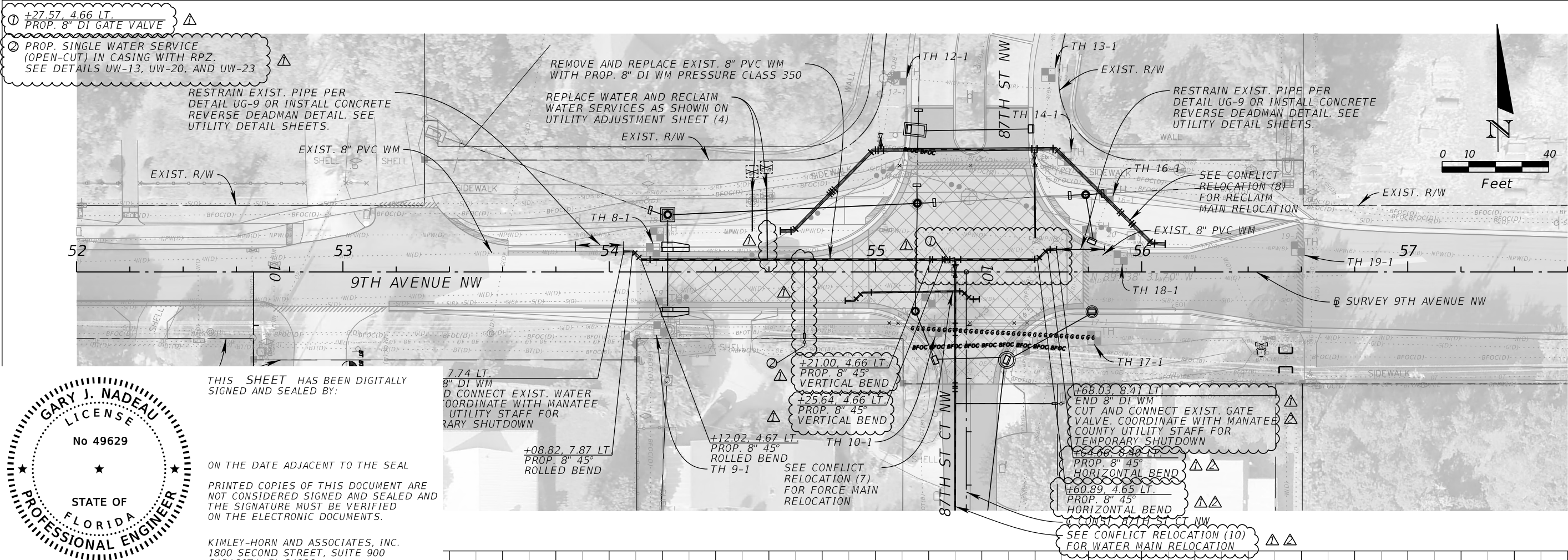
JORDAN E. LEEP, P.E.
FL LICENSE NUMBER 76102

FL DATE:

UTILITY ADJUSTMENT
SHEET (5)

SHEET NUMBER

120



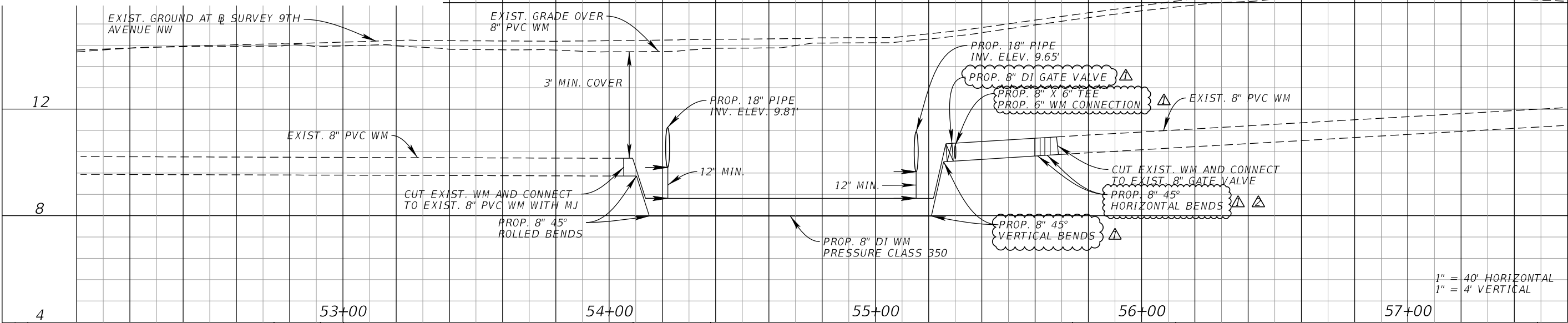
THIS SHEET HAS BEEN DIGITALLY SIGNED AND SEALED BY:

ON THE DATE ADJACENT TO THE SEAL

PRINTED COPIES OF THIS DOCUMENT ARE NOT CONSIDERED SIGNED AND SEALED AND THE SIGNATURE MUST BE VERIFIED ON THE ELECTRONIC DOCUMENTS.

KIMLEY-HORN AND ASSOCIATES, INC.
1800 SECOND STREET, SUITE 900
SARASOTA, FL 34236
GARY J. NADEAU, P.E. NO. 49629

THE ABOVE NAMED PROFESSIONAL ENGINEER SHALL BE RESPONSIBLE FOR THE FOLLOWING REVISION IN ACCORDANCE WITH RULE 61G15-23.004, F.A.C.



No.	UTILITY RELOCATION AND REVISION		10/14/25 SK
	COUNTY UTILITY RELOCATION COMMENTS		10/20/25 JW
No.	REVISIONS		DATE
			BY



© 2025 KIMLEY-HORN AND ASSOCIATES, INC.
1800 SECOND STREET, SUITE 900, SARASOTA, FL 34236
PHONE: 941-379-7600
WWW.KIMLEY-HORN.COM

KHA PROJECT
148400070
DATE
10/14/2025
SCALE AS SHOWN
DESIGNED BY
DRAWN BY
CHECKED BY



9TH AVENUE NW

MANATEE COUNTY

LICENSED PROFESSIONAL

JORDAN E. LEEP, P.E.
FL LICENSE NUMBER 76102

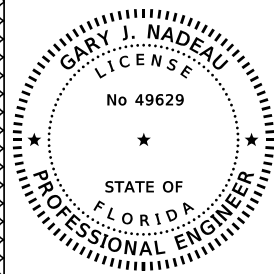
FL DATE:

CONFLICT RELOCATION (6)
[[STA. 52+00 - STA. 57+60]]

SHEET NUMBER

137

THE OFFICIAL RECORD OF THIS SHEET IS THE ELECTRONIC FILE DIGITALLY SIGNED AND SEALED UNDER RULE 61G15-23.004, F.A.C.



THIS SHEET HAS BEEN DIGITALLY
SIGNED AND SEALED BY:

ON THE DATE ADJACENT TO THE SEAL

PRINTED COPIES OF THIS DOCUMENT ARE
NOT CONSIDERED SIGNED AND SEALED AND
THE SIGNATURE MUST BE VERIFIED
ON THE ELECTRONIC DOCUMENTS.

KIMLEY-HORN AND ASSOCIATES, INC.
1800 SECOND STREET, SUITE 900
SARASOTA, FL 34236
GARY J. NADEAU, P.E. NO. 49629

THE ABOVE NAMED PROFESSIONAL ENGINEER SHALL BE RESPONSIBLE FOR THE
FOLLOWING REVISION IN ACCORDANCE WITH RULE 61G15-23.004, F.A.C.



EXIST. R/W

PROP. 6" DI CAPS
@ SURVEY 9TH AVENUE NW

EXIST. R/W

PROP. SINGLE WATER SERVICE (OPEN-CUT)
IN CASING WITH RPZ.
SEE DETAILS UW-13, UW-20, AND UW-23.

EXIST. 33' ACCESS, DRAINAGE
& UTILITY ESMT.

PROP. 6" DI WM
CLASS 350

+81.73, 4.41 RT.
PROP. 45-DEGREE BEND
DI TO PVC TRANSITION FITTING

EXIST. R/W
SEE CONFLICT RELOCATION (7)
FOR FORCE MAIN RELOCATION

SEE CONFLICT RELOCATION (6)
FOR WATER MAIN RELOCATION

87TH ST CT NW

CONST. 87TH ST CT NW

PROP. 6" PVC WM
C900 DR 18

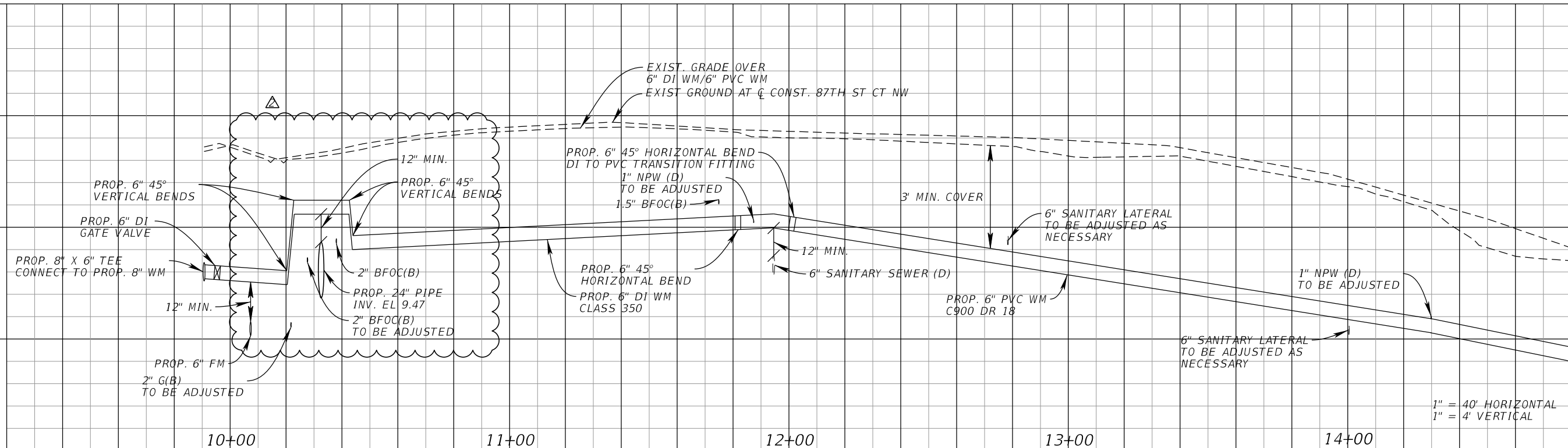
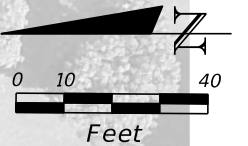
EXIST. 33' ACCESS, DRAINAGE
& UTILITY ESMT.

PROP. DOUBLE WATER SERVICE WITH RPZ.
SEE DETAILS UW-13, UW-20, AND UW-23.

- +30.00*, 4.66 LT.
PROP. 8" X 6" TEE
CONNECT TO PROP. 8" WM
- +00.00, 4.18 RT.
PROP. 6" GATE VALVE
- +20.24, 4.20 RT.
PROP. 45-DEGREE VERTICAL BEND
- +22.79, 4.21 RT.
PROP. 45-DEGREE VERTICAL BEND
- +42.65, 4.23 RT.
PROP. 45-DEGREE VERTICAL BEND
- +43.92, 4.23 RT.
PROP. 45-DEGREE VERTICAL BEND

*STA./OFFSET BASED OFF
@ SURVEY 9TH AVENUE NW

PROP. DOUBLE WATER SERVICE (OPEN-CUT)
IN CASING WITH NORTH END RPZ AND SOUTH
END PROP. FUTURE SERVICE CONNECTION.
SEE DETAILS UW-13, UW-20, AND UW-23.



1" = 40' HORIZONTAL
1" = 4' VERTICAL

UTILITY RELOCATION AND REVISION		10/14/25 SK
COUNTY UTILITY RELOCATION COMMENTS		10/20/25 JW
No.	REVISIONS	DATE BY

Kimley»Horn

© 2025 KIMLEY-HORN AND ASSOCIATES, INC.
1800 SECOND STREET, SUITE 900, SARASOTA, FL 34236
PHONE: 941-379-7600
WWW.KIMLEY-HORN.COM

SHA PROJECT 148400070
DATE 10/14/2025
SCALE AS SHOWN
DESIGNED BY
DRAWN BY
CHECKED BY

MANATEE COUNTY



9TH AVENUE NW

LICENSED PROFESSIONAL

JORDAN E.
LEEP, P.E.
FL LICENSE NUMBER
76102

CONFLICT RELOCATION (10)
87TH ST CT NW

SHEET NUMBER

141