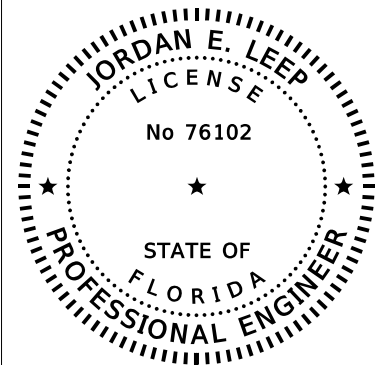


SIGNING AND PAVEMENT MARKINGS PLANS

FOR 9TH AVENUE NW

MANATEE COUNTY, FLORIDA
OCTOBER 2025
MANATEE COUNTY PROJECT # 20-TA003483CD



THIS ITEM HAS BEEN DIGITALLY
SIGNED AND SEALED BY:

ON THE DATE ADJACENT TO THE SEAL
SIGNATURE MUST BE VERIFIED ON ANY
ELECTRONIC COPIES.

KIMLEY-HORN AND ASSOCIATES, INC.
1800 SECOND STREET, SUITE 900
SARASOTA, FL 34236
JORDAN E. LEEP, P.E. NO. 76102

THE ABOVE NAMED PROFESSIONAL ENGINEER SHALL BE RESPONSIBLE FOR THE
FOLLOWING SHEETS IN ACCORDANCE WITH RULE 61G15-23.004, F.A.C.

SIGNING & PAVEMENT MARKING PLANS ENGINEER OF RECORD:

JORDAN E. LEEP, P.E.
P.E. NO.: 76102
KIMLEY-HORN AND ASSOCIATES, INC.
1800 SECOND STREET, SUITE 900
SARASOTA, FL 34236

GOVERNING STANDARD PLANS:

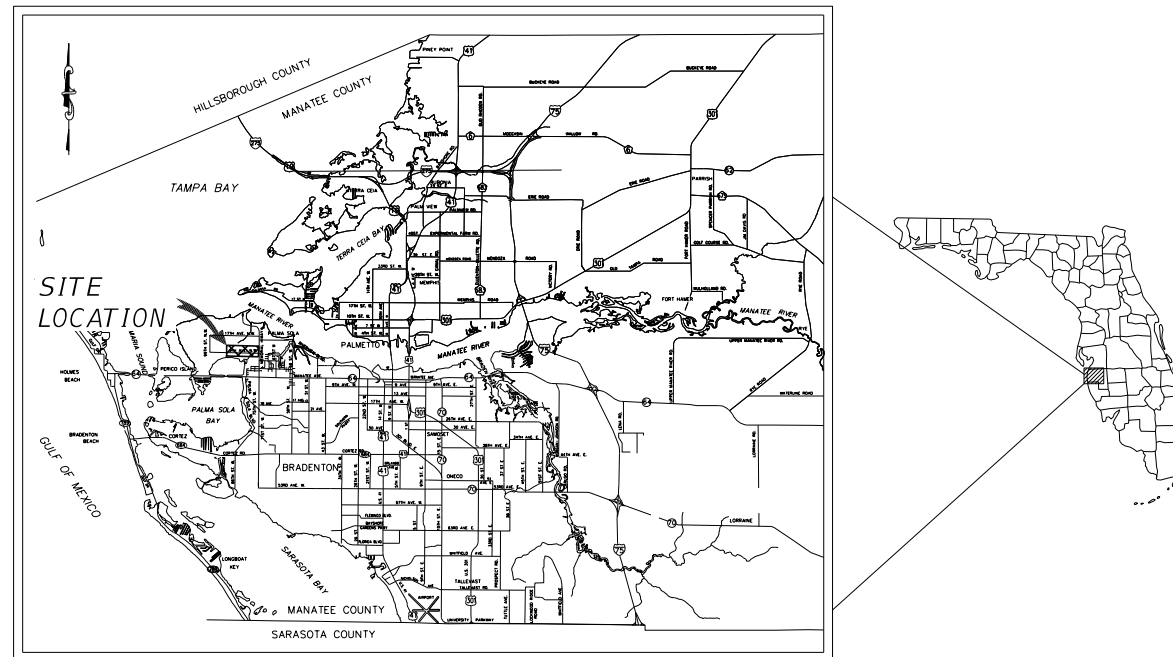
Florida Department of Transportation, FY2025-26 Standard Plans for Road and
Bridge Construction and applicable Interim Revisions (IRs)

Standard Plans for Road Construction and associated IRs are available at the
following website: <http://www.fdot.gov/design/standardplans>

APPLICABLE IRs: NONE

GOVERNING STANDARD SPECIFICATIONS:

Florida Department of Transportation, FY 2025-26 Standard Specifications
for Road and Bridge Construction at the following website:
<http://www.fdot.gov/programmanagement/Implemented/SpecBooks>



PROJECT VICINITY MAP
N.T.S.

INDEX OF SIGNING AND PAVEMENT MARKING PLANS

SHEET NO.	SHEET DESCRIPTION
S-1	KEY SHEET
S-2	GENERAL NOTES
S-3 - S-4	TABULATION OF QUANTITIES
S-5 - S-16	SAPM PLAN SHEETS
S-17	PAVEMENT MARKING DETAILS

COUNTY CIP PROJECT BID PLANS

PREPARED BY
Kimley»Horn

© 2025 KIMLEY-HORN AND ASSOCIATES, INC.
1800 SECOND STREET, SUITE 900
SARASOTA, FL 34236
PHONE (941) 379-7600
WWW.KIMLEY-HORN.COM

No.	REVISIONS	DATE	BY

THE SITE CONSTRUCTION STAKEOUT SHALL BE PERFORMED UNDER THE DIRECTION OF
A FLORIDA REGISTERED SURVEYOR. AUTOCAD FILES WILL BE FURNISHED TO AID IN
THE SITE CONSTRUCTION STAKEOUT. ANY DISCREPANCIES FOUND BETWEEN AUTOCAD
FILES AND SITE CONSTRUCTION PLANS SHALL BE BROUGHT TO THE ENGINEER'S
ATTENTION FOR CLARIFICATION PRIOR TO THAT STAKEOUT.

THIS DOCUMENT IS PROTECTED BY SECTION 106 OF THE "UNITED STATES COPYRIGHT ACT". REPRODUCTION OR ALTERATION OF THIS DOCUMENT OR THE INFORMATION CONTAINED HEREON BY ANY MEANS WHATSOEVER IS STRICTLY PROHIBITED WITHOUT THE PRIOR WRITTEN CONSENT OF KIMLEY-HORN AND ASSOCIATES, INC. CONSENT IS HEREBY GRANTED SPECIFICALLY TO GOVERNMENTAL AGENCIES TO REPRODUCE THIS DOCUMENT IN COMPLIANCE WITH F.S. CHAPTER 119.	DATE OCTOBER 2025	SHEET NUMBER S-1
	KHA PROJECT NO. 148400070	
JORDAN E. LEEP, P.E. FLORIDA LICENSE NUMBER: 76102	DATE:	

SIGNING & PAVEMENT MARKING GENERAL NOTES



1. REMOVAL OF EXISTING PAVEMENT MARKINGS SHALL BE PERFORMED WITH AN APPROVED METHOD AND SHALL NOT BE VISIBLE AFTER REMOVAL.
2. ALL FINAL PAVEMENT MARKINGS SHALL BE THERMOPLASTIC, UNLESS OTHERWISE NOTED IN THE PLANS.
3. FOR ALL SIGNS BEING REMOVED, COORDINATE THE RETURN OF MANATEE COUNTY PROPERTY WITH THE TRAFFIC ENGINEERING AND OPERATION DEPARTMENT.
4. ALL PAVEMENT MARKINGS DAMAGED DURING CONSTRUCTION SHALL BE REPLACED PER FDOT STANDARDS AT NO ADDITIONAL COST.
5. SIGN POST SHALL BE ALUMINUM ROUND STOCK PER FDOT INDEX 700-010.
6. ALL STREET NAME SIGN SHOP DRAWINGS ARE TO BE REVIEWED BY MANATEE COUNTY PRIOR TO INSTALLATION AND THE SIGNS SHALL BE DESIGNED WITH BLOCK NAMES, NUMBERS AND COLORS AS FOLLOWS:
 - A. PRIVATE STREETS INTERSECTING WITH PUBLIC ROADS: THE STREET NAME SIGNS SHALL BE 6" B SERIES UPPER/LOWER CASE WHITE TEXT ON BLUE BACKGROUND.
 - B. PUBLIC STREETS: THE STREET NAME SIGNS SHALL BE 6" B SERIES UPPER/LOWER CASE WHITE TEXT ON GREEN BACKGROUND.

				 © 2025 KIMLEY-HORN AND ASSOCIATES, INC. 1800 SECOND STREET, SUITE 900, SARASOTA, FL 34236 PHONE: 941-379-7600 WWW.KIMLEY-HORN.COM	KHA PROJECT 148400070 DATE 10/02/2025 SCALE AS SHOWN DESIGNED BY DRAWN BY CHECKED BY	 9TH AVENUE NW MANATEE COUNTY	LICENSED PROFESSIONAL JORDAN E. LEEP, P.E. FL LICENSE NUMBER 76102	<h2 style="margin: 0;">GENERAL NOTES</h2>	SHEET NUMBER <h2 style="margin: 0;">S-2</h2>
No.	REVISIONS	DATE	BY						

TABULATION OF QUANTITIES

PAY ITEM NO.	DESCRIPTION	UNIT	SHEET NUMBERS														TOTAL THIS SHEET	
			S-5		S-6		S-7		S-8		S-9		S-10		S-11		PLAN	FINAL
			PLAN	FINAL	PLAN	FINAL	PLAN	FINAL	PLAN	FINAL	PLAN	FINAL	PLAN	FINAL	PLAN	FINAL		
700-1-111	SINGLE COLUMN GROUND SIGN ASSEMBLY, F&I GROUND MOUNT, LESS THAN 12 SF	EA					11		3		6		8		1		29	
700-1-112	SINGLE COLUMN GROUND SIGN ASSEMBLY, F&I GROUND MOUNT, 12.0-20.0 SF	EA							1								1	
700-1-500	SINGLE COLUMN GROUND SIGN ASSEMBLY, RELOCATE	EA									2						2	
700-1-600	SINGLE COLUMN GROUND SIGN ASSEMBLY, REMOVE	EA			7		4		2				2		4		19	
705-11-1	DELINEATOR, FLEXIBLE TUBULAR	EA					2				1		29		27		59	
706-1-3	RAISED PAVEMENT MARKER, TYPE B	EA	2		30		52		24		44		88		80		320	
710-90	PAINTED PAVEMENT MARKINGS, FINAL SURFACE	LS																
	PAINTED PAVEMENT MARKINGS, STANDARD, WHITE, SOLID, 6"	GM	0.007		0.213		0.217		0.188		0.187		0.295		0.308		1.415	
	PAINTED PAVEMENT MARKINGS, STANDARD, WHITE, SOLID, 12"	LF					128				264						392	
	PAINTED PAVEMENT MARKINGS, STANDARD, WHITE, SOLID FOR DIAGONAL OR CHEVRON, 18"	LF											232		226		458	
	PAINTED PAVEMENT MARKINGS, STANDARD, WHITE, SOLID, 24"	LF					12		27		32						71	
	PAINTED PAVEMENT MARKINGS, STANDARD, WHITE, 2-4 DOTTED GUIDELINE / 6-10 DOTTED EXTENSION, 6"	GM											0.011		0.003		0.014	
	PAINTED PAVEMENT MARKINGS, STANDARD, YELLOW, SOLID, 6"	GM	0.013		0.212		0.192		0.169		0.175		0.187		0.204		1.152	
	PAINTED PAVEMENT MARKINGS, STANDARD, YELLOW, 2-4 DOTTED GUIDELINE / 6-10 DOTTED EXTENSION, 6"	GM																
	PAINTED PAVEMENT MARKINGS, STANDARD, YELLOW, SKIP, 6"	GM											0.094		0.106		0.200	
711-11-123	THERMOPLASTIC, STANDARD, WHITE, SOLID, 12" FOR CROSSWALK AND ROUNDABOUT	LF					128				264						392	
711-11-124	THERMOPLASTIC, STANDARD, WHITE, SOLID, 18" FOR DIAGONALS AND CHEVRONS	LF											231		223		454	
711-11-125	THERMOPLASTIC, STANDARD, WHITE, SOLID, 24" FOR STOP LINE AND CROSSWALK	LF					12		27		32						71	
711-11-130	THERMOPLASTIC, STANDARD, WHITE, VERTICAL DEFLECTION MARKING	EA					6				8						14	
711-11-140	THERMOPLASTIC, STANDARD, WHITE, VERTICAL DEFLECTION ADVANCED WARNING MARKING	EA					2				1		1				4	
711-11-141	THERMOPLASTIC, STANDARD, WHITE, 2-4 DOTTED GUIDELINE / 6-10 GAP EXTENSION, 6"	GM											0.011		0.003		0.014	
711-11-241	THERMOPLASTIC, STANDARD, YELLOW, 2-4 DOTTED GUIDELINE / 6-10 GAP EXTENSION, 6"	GM																
711-14-125	THERMOPLASTIC, PREFORMED, WHITE, SOLID, 24" FOR CROSSWALK	LF					110				119						229	
711-14-160	THERMOPLASTIC, PREFORMED, WHITE, MESSAGE HELMETED BICYCLE SYMBOL	EA											8		4		12	
711-14-170	THERMOPLASTIC, PREFORMED, WHITE, ARROW BIKE LANE ARROW	EA											8		4		12	
711-16-101	THERMOPLASTIC, STANDARD-OTHER SURFACES, WHITE, SOLID, 6"	GM	0.007		0.213		0.217		0.188		0.187		0.295		0.308		1.415	
711-16-201	THERMOPLASTIC, STANDARD-OTHER SURFACES, YELLOW, SOLID, 6"	GM	0.013		0.212		0.192		0.169		0.175		0.187		0.204		1.152	
711-16-231	THERMOPLASTIC, STANDARD-OTHER SURFACES, YELLOW, SKIP, 6"	GM											0.094		0.106		0.200	
714-10	GREEN-COLORED PAVEMENT MARKINGS, BIKE LANE	SF											3,555		1,245		4,800	

THE OFFICIAL RECORD OF THIS SHEET IS THE ELECTRONIC FILE DIGITALLY SIGNED AND SEALED UNDER RULE 61G15-23.004, F.A.C.

		KHA PROJECT 148400070 DATE 10/02/2025 SCALE AS SHOWN DESIGNED BY DRAWN BY CHECKED BY				LICENSED PROFESSIONAL JORDAN E. LEEP, P.E. FL LICENSE NUMBER 76102		SHEET NUMBER S-3	
© 2025 KIMLEY-HORN AND ASSOCIATES, INC. 1800 SECOND STREET, SUITE 900, SARASOTA, FL 34236 PHONE: 941-379-7600 WWW.KIMLEY-HORN.COM		MANATEE COUNTY FL		DATE:		TABULATION OF QUANTITIES		K:\SAR_Roadway\148400070_9thAve\148400070\signing\TABQSP01.dgn	
No.	REVISIONS	DATE	BY	9/30/2025 5:33:01 PM		Default		Scott.Zyra	

TABULATION OF QUANTITIES

PAY ITEM NO.	DESCRIPTION	UNIT	SHEET NUMBERS										TOTAL THIS SHEET		GRAND TOTAL	
			S-12		S-13		S-14		S-15		S-16		PLAN	FINAL	PLAN	FINAL
			PLAN	FINAL	PLAN	FINAL	PLAN	FINAL	PLAN	FINAL	PLAN	FINAL				
700-1-111	SINGLE COLUMN GROUND SIGN ASSEMBLY, F&I GROUND MOUNT, LESS THAN 12 SF	EA	7		14		3					24		53		
700-1-112	SINGLE COLUMN GROUND SIGN ASSEMBLY, F&I GROUND MOUNT, 12.0-20.0 SF	EA												1		
700-1-500	SINGLE COLUMN GROUND SIGN ASSEMBLY, RELOCATE	EA			3						3		5			
700-1-600	SINGLE COLUMN GROUND SIGN ASSEMBLY, REMOVE	EA			2		2		1		1		6	25		
705-11-1	DELINEATOR, FLEXIBLE TUBULAR	EA	25		23		22					70		129		
706-1-3	RAISED PAVEMENT MARKER, TYPE B	EA	93		78		62					233		553		
710-90	PAINTED PAVEMENT MARKINGS, FINAL SURFACE	LS														
	PAINTED PAVEMENT MARKINGS, STANDARD, WHITE, SOLID, 6"	GM	0.289		0.287		0.256					0.832		2.247		
	PAINTED PAVEMENT MARKINGS, STANDARD, WHITE, SOLID, 12"	LF	51		242		102					395		787		
	PAINTED PAVEMENT MARKINGS, STANDARD, WHITE, SOLID FOR DIAGONAL OR CHEVRON, 18"	LF	225		192		198					615		1,073		
	PAINTED PAVEMENT MARKINGS, STANDARD, WHITE, SOLID, 24"	LF	9		35		14					58		129		
	PAINTED PAVEMENT MARKINGS, STANDARD, WHITE, 2-4 DOTTED GUIDELINE / 6-10 DOTTED EXTENSION, 6"	GM					0.033					0.033		0.047		
	PAINTED PAVEMENT MARKINGS, STANDARD, YELLOW, SOLID, 6"	GM	0.168		0.182		0.131					0.481		1.633		
	PAINTED PAVEMENT MARKINGS, STANDARD, YELLOW, 2-4 DOTTED GUIDELINE / 6-10 DOTTED EXTENSION, 6"	GM					0.015					0.015		0.015		
	PAINTED PAVEMENT MARKINGS, STANDARD, YELLOW, SKIP, 6"	GM	0.102		0.081		0.091		0.002			0.276		0.476		
711-11-123	THERMOPLASTIC, STANDARD, WHITE, SOLID, 12" FOR CROSSWALK AND ROUNDABOUT	LF	51		242		102					395		787		
711-11-124	THERMOPLASTIC, STANDARD, WHITE, SOLID, 18" FOR DIAGONALS AND CHEVRONS	LF	225		192		198					615		1,069		
711-11-125	THERMOPLASTIC, STANDARD, WHITE, SOLID, 24" FOR STOP LINE AND CROSSWALK	LF	9		35		14					58		129		
711-11-130	THERMOPLASTIC, STANDARD, WHITE, VERTICAL DEFLECTION MARKING	EA	2		6							8		22		
711-11-140	THERMOPLASTIC, STANDARD, WHITE, VERTICAL DEFLECTION ADVANCED WARNING MARKING	EA	1		1							2		6		
711-11-141	THERMOPLASTIC, STANDARD, WHITE, 2-4 DOTTED GUIDELINE / 6-10 GAP EXTENSION, 6"	GM					0.033					0.033		0.047		
711-11-241	THERMOPLASTIC, STANDARD, YELLOW, 2-4 DOTTED GUIDELINE / 6-10 GAP EXTENSION, 6"	GM					0.015					0.015		0.015		
711-14-125	THERMOPLASTIC, PREFORMED, WHITE, SOLID, 24" FOR CROSSWALK	LF	35		117		44					196		425		
711-14-160	THERMOPLASTIC, PREFORMED, WHITE, MESSAGE HELMETED BICYCLE SYMBOL	EA	2		2		6					10		22		
711-14-170	THERMOPLASTIC, PREFORMED, WHITE, ARROW BIKE LANE ARROW	EA	2		2		6					10		22		
711-16-101	THERMOPLASTIC, STANDARD-OTHER SURFACES, WHITE, SOLID, 6"	GM	0.289		0.287		0.256					0.832		2.247		
711-16-201	THERMOPLASTIC, STANDARD-OTHER SURFACES, YELLOW, SOLID, 6"	GM	0.168		0.182		0.131					0.481		1.633		
711-16-231	THERMOPLASTIC, STANDARD-OTHER SURFACES, YELLOW, SKIP, 6"	GM	0.102		0.081		0.091		0.002			0.276		0.476		
714-10	GREEN-COLORED PAVEMENT MARKINGS, BIKE LANE	SF	593		627		1,561					2,781		7,581		

No.	REVISIONS	DATE	BY

Kimley»Horn

© 2025 KIMLEY-HORN AND ASSOCIATES, INC.
1800 SECOND STREET, SUITE 900, SARASOTA, FL 34236
PHONE: 941-379-7600
WWW.KIMLEY-HORN.COM

KHA PROJECT
148400070
DATE
10/02/2025
SCALE AS SHOWN
DESIGNED BY
DRAWN BY
CHECKED BY

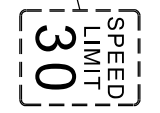
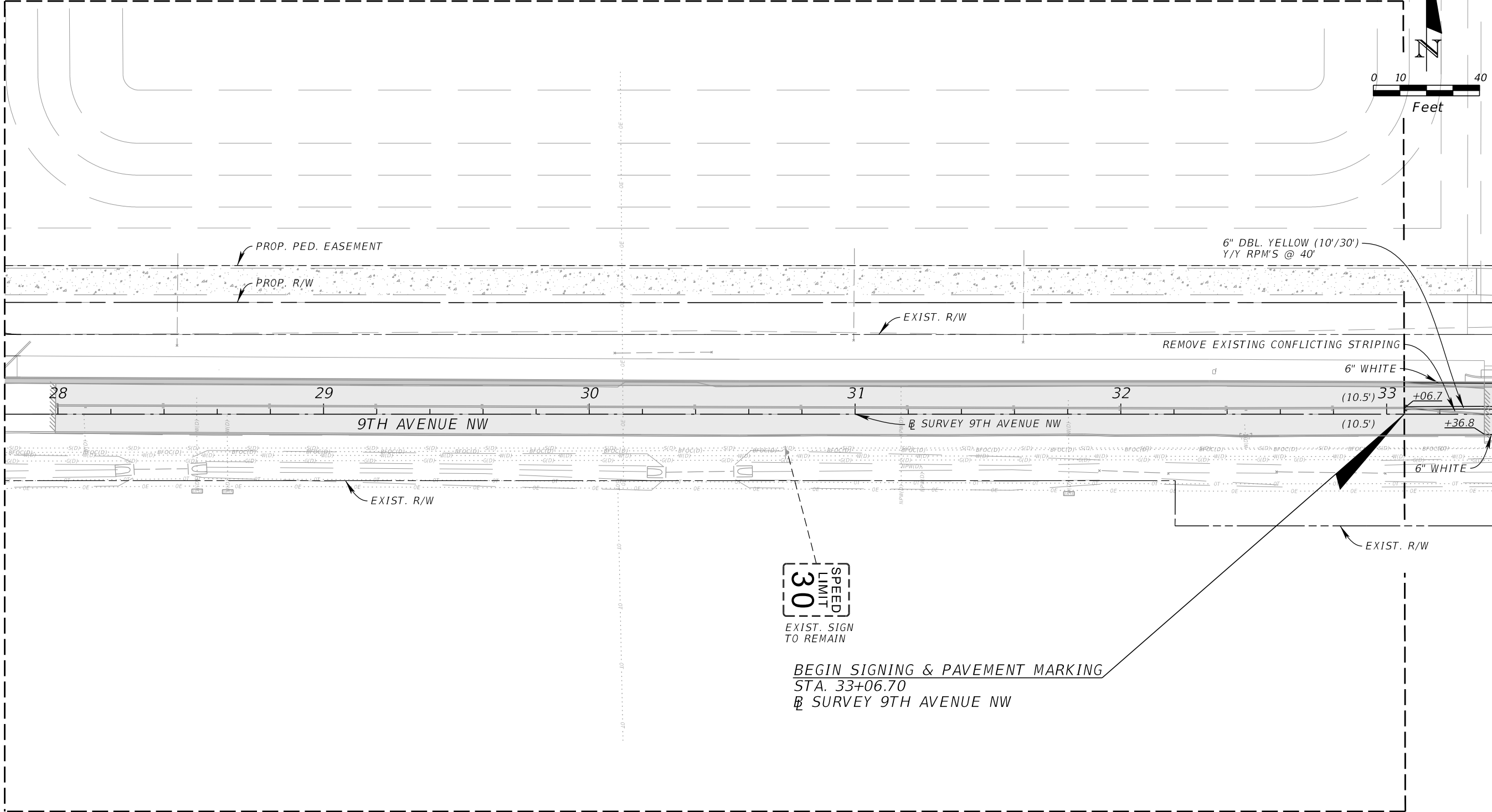
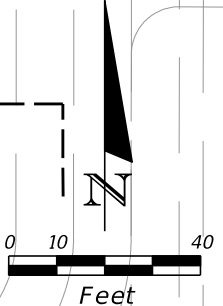

9TH AVENUE NW
MANATEE COUNTY
FL

LICENSED PROFESSIONAL
JORDAN E. LEEP, P.E.
FL LICENSE NUMBER 76102

TABULATION OF QUANTITIES

SHEET NUMBER
S-4

THE OFFICIAL RECORD OF THIS SHEET IS THE ELECTRONIC FILE DIGITALLY SIGNED AND SEALED UNDER RULE 61G15-23.004, F.A.C.



EXIST. SIGN TO REMAIN

BEGIN SIGNING & PAVEMENT MARKING
 STA. 33+06.70
 @ SURVEY 9TH AVENUE NW

NEAL COMMUNITIES TIDELINE PROJECT
 COMPLETED UNDER SEPARATE PROJECT

No.	REVISIONS	DATE	BY

Kimley»Horn

© 2025 KIMLEY-HORN AND ASSOCIATES, INC.
 1800 SECOND STREET, SUITE 900, SARASOTA, FL 34236
 PHONE: 941-379-7600
 WWW.KIMLEY-HORN.COM

KHA PROJECT 148400070
DATE 10/02/2025
SCALE AS SHOWN
DESIGNED BY
DRAWN BY
CHECKED BY

Manatee County
 9TH AVENUE NW

MANATEE COUNTY

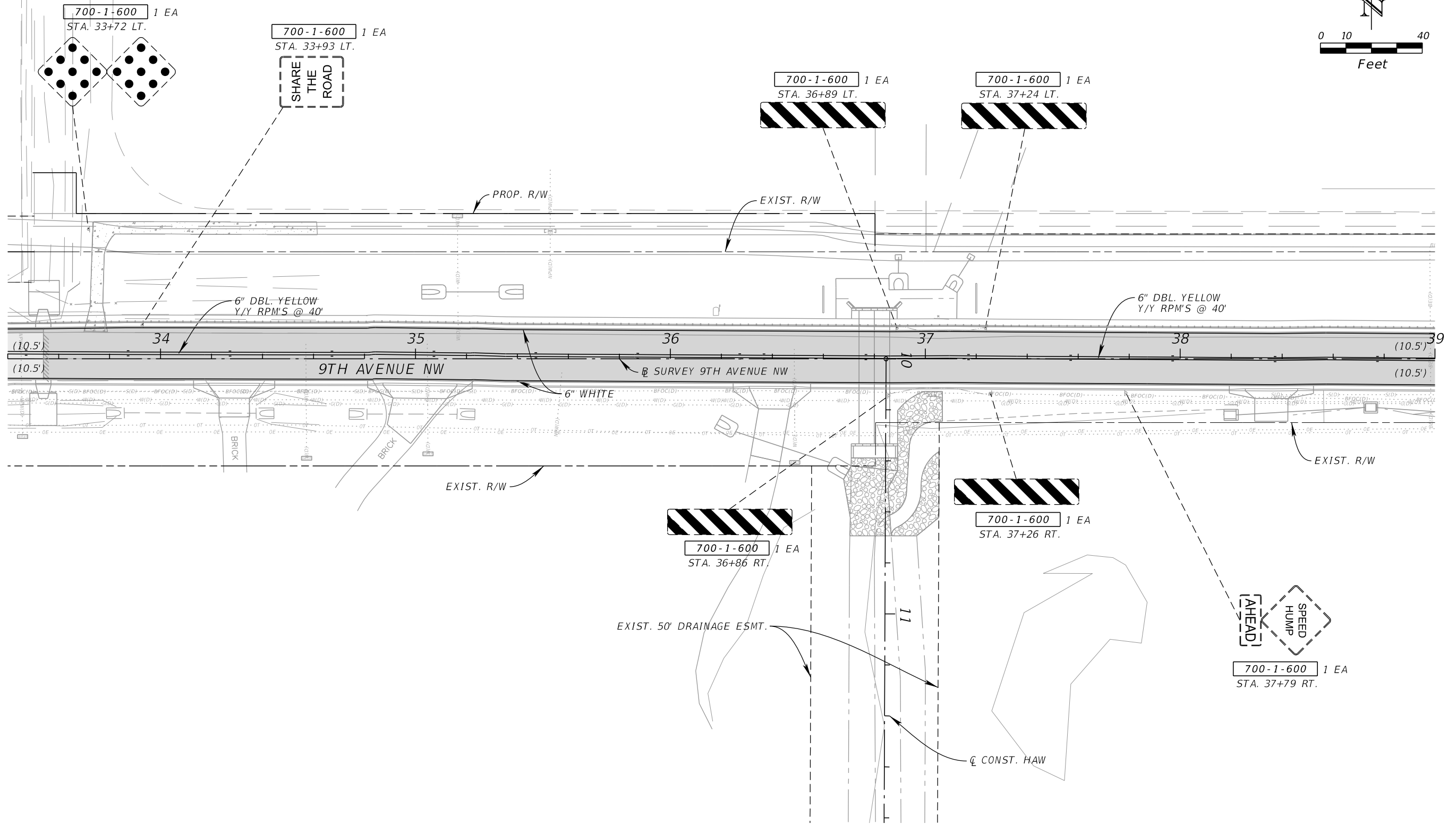
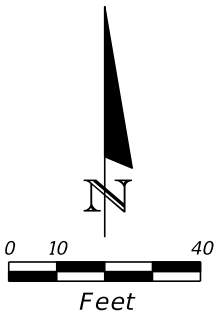
LICENSED PROFESSIONAL

JORDAN E. LEEP, P.E.
 FL LICENSE NUMBER 76102

FL DATE:

SIGNING AND PAVEMENT MARKING PLAN SHEET (1)

SHEET NUMBER
S-5



No.	REVISIONS	DATE	BY

Kimley»Horn

© 2025 KIMLEY-HORN AND ASSOCIATES, INC.
1800 SECOND STREET, SUITE 900, SARASOTA, FL 34236
PHONE: 941-379-7600
WWW.KIMLEY-HORN.COM

KHA PROJECT
148400070
DATE
10/02/2025
SCALE AS SHOWN
DESIGNED BY
DRAWN BY
CHECKED BY

Manatee County
FLORIDA

9TH AVENUE NW

MANATEE COUNTY

LICENSED PROFESSIONAL

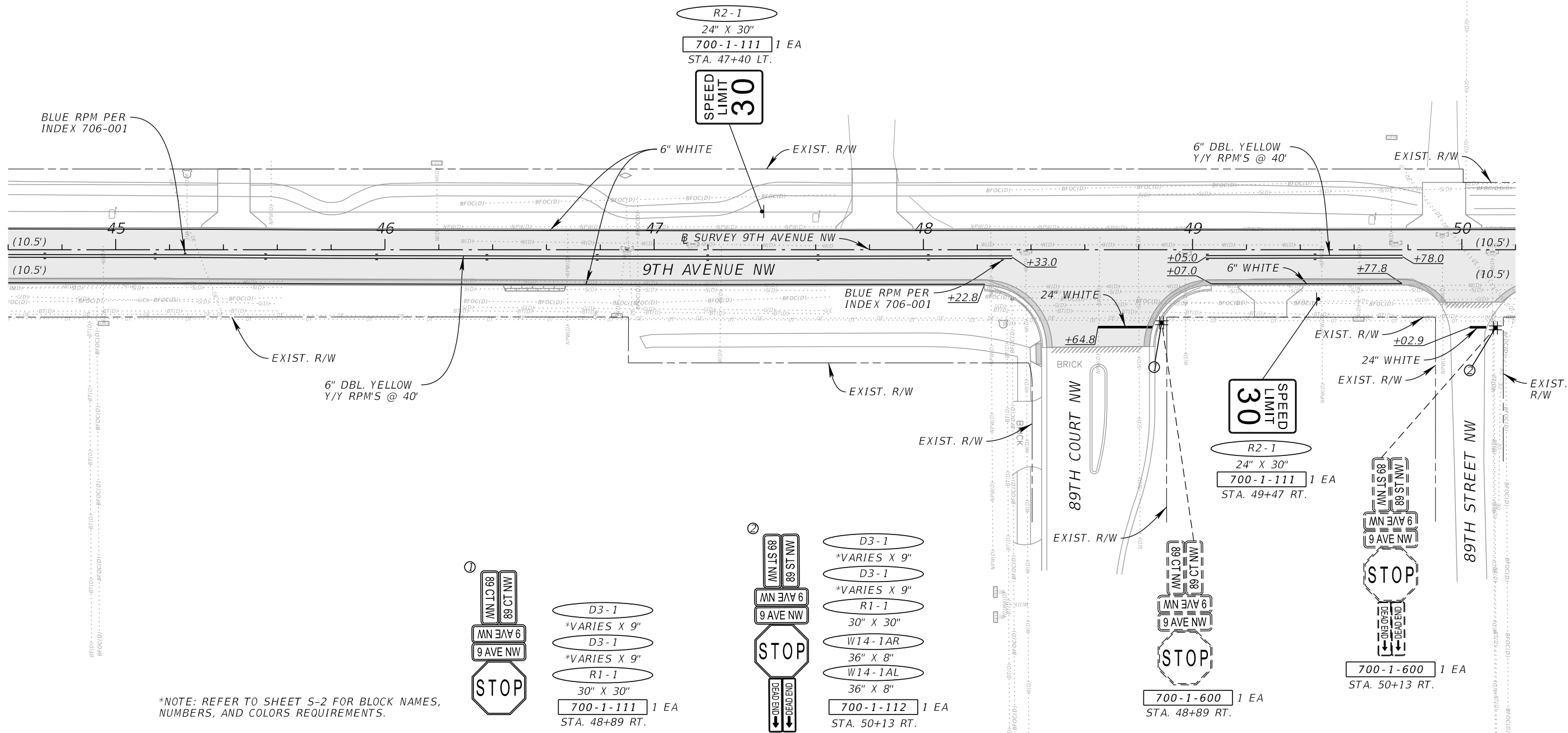
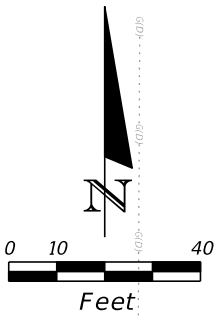
JORDAN E.
LEEP, P.E.
FL LICENSE NUMBER
76102

FL DATE:

SIGNING AND PAVEMENT MARKING PLAN SHEET (2)

SHEET NUMBER
S-6

THE OFFICIAL RECORD OF THIS SHEET IS THE ELECTRONIC FILE DIGITALLY SIGNED AND SEALED UNDER RULE 61G15-23.004, F.A.C.



*NOTE: REFER TO SHEET S-2 FOR BLOCK NAMES, NUMBERS, AND COLORS REQUIREMENTS.



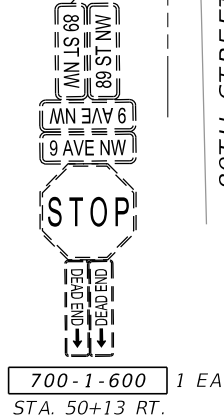
D3-1
*VARIES X 9"
D3-1
*VARIES X 9"
R1-1
30" X 30"
700-1-111 1 EA
STA. 48+89 RT.



D3-1
*VARIES X 9"
D3-1
*VARIES X 9"
R1-1
30" X 30"
W14-1AR
36" X 8"
W14-1AL
36" X 8"
700-1-112 1 EA
STA. 50+13 RT.



700-1-600 1 EA
STA. 48+89 RT.



700-1-600 1 EA
STA. 50+13 RT.

No.	REVISIONS	DATE	BY

Kimley»Horn

© 2025 KIMLEY-HORN AND ASSOCIATES, INC.
1800 SECOND STREET, SUITE 900, SARASOTA, FL 34236
PHONE: 941-379-7600
WWW.KIMLEY-HORN.COM

KHA PROJECT
148400070
DATE
10/02/2025
SCALE AS SHOWN
DESIGNED BY
DRAWN BY
CHECKED BY

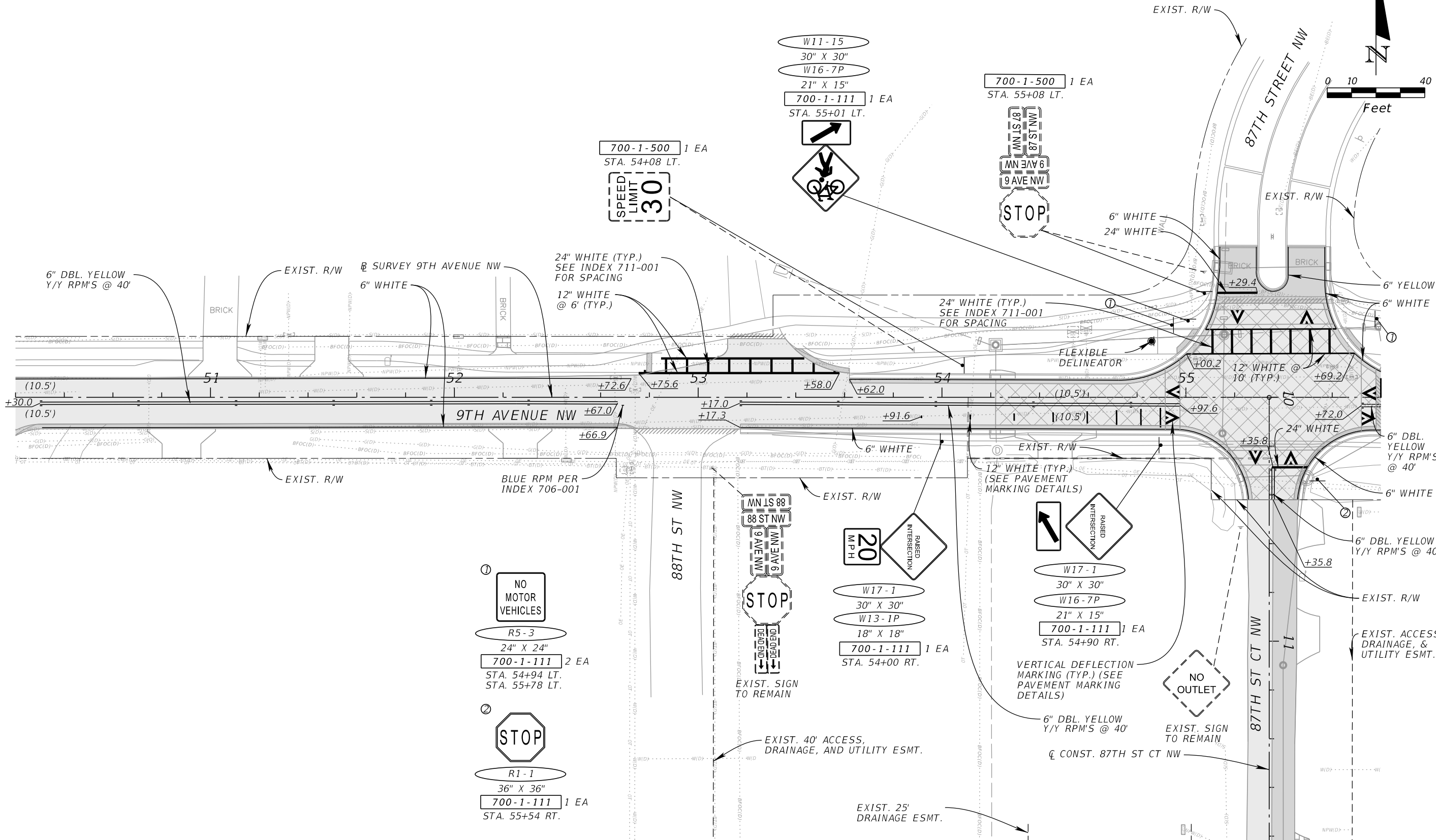
MANATEE COUNTY



LICENSED PROFESSIONAL
JORDAN E. LEEP, P.E.
FL LICENSE NUMBER 76102
FL DATE:

SIGNING AND PAVEMENT MARKING PLAN SHEET (4)

SHEET NUMBER
S-8



THE OFFICIAL RECORD OF THIS SHEET IS THE ELECTRONIC FILE DIGITALLY SIGNED AND SEALED UNDER RULE 61G15-23.004, F.A.C.

No.	REVISIONS	DATE	BY

Kimley»Horn

© 2025 KIMLEY-HORN AND ASSOCIATES, INC.
1800 SECOND STREET, SUITE 900, SARASOTA, FL 34236
PHONE: 941-379-7600
WWW.KIMLEY-HORN.COM

KHA PROJECT
148400070
DATE
10/02/2025
SCALE AS SHOWN
DESIGNED BY
DRAWN BY
CHECKED BY
MANATEE COUNTY

Manatee County
FLORIDA

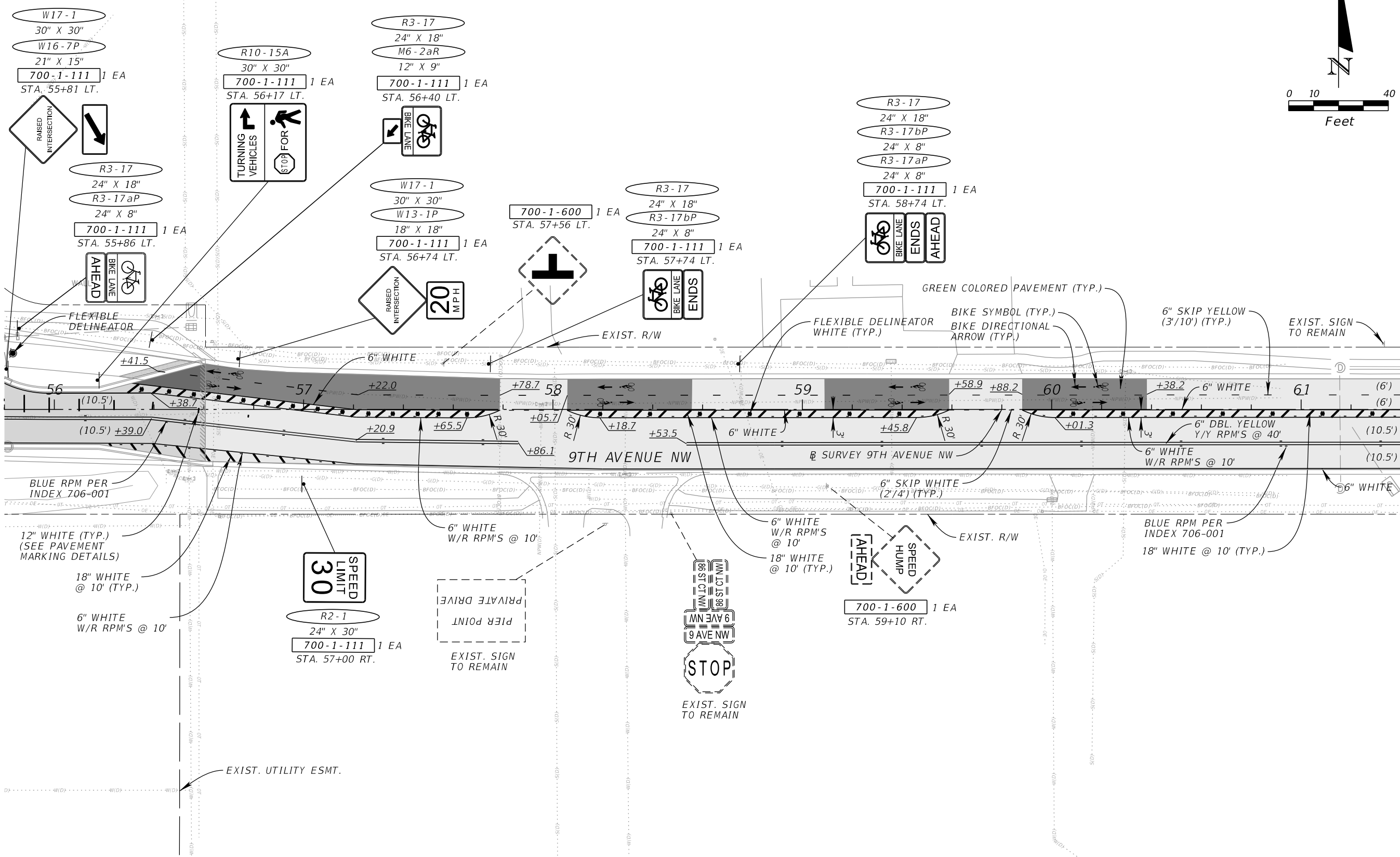
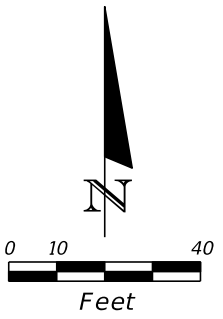
9TH AVENUE NW

LICENSED PROFESSIONAL

JORDAN E. LEEP, P.E.
FL LICENSE NUMBER
76102

SIGNING AND PAVEMENT MARKING PLAN SHEET (5)

SHEET NUMBER
S-9



No.	REVISIONS	DATE	BY

Kimley»Horn

© 2025 KIMLEY-HORN AND ASSOCIATES, INC.
 1800 SECOND STREET, SUITE 900, SARASOTA, FL 34236
 PHONE: 941-379-7600
 WWW.KIMLEY-HORN.COM

KHA PROJECT
148400070
DATE
10/02/2025
SCALE AS SHOWN
DESIGNED BY
DRAWN BY
CHECKED BY

Manatee County
FLORIDA

9TH AVENUE NW

MANATEE COUNTY

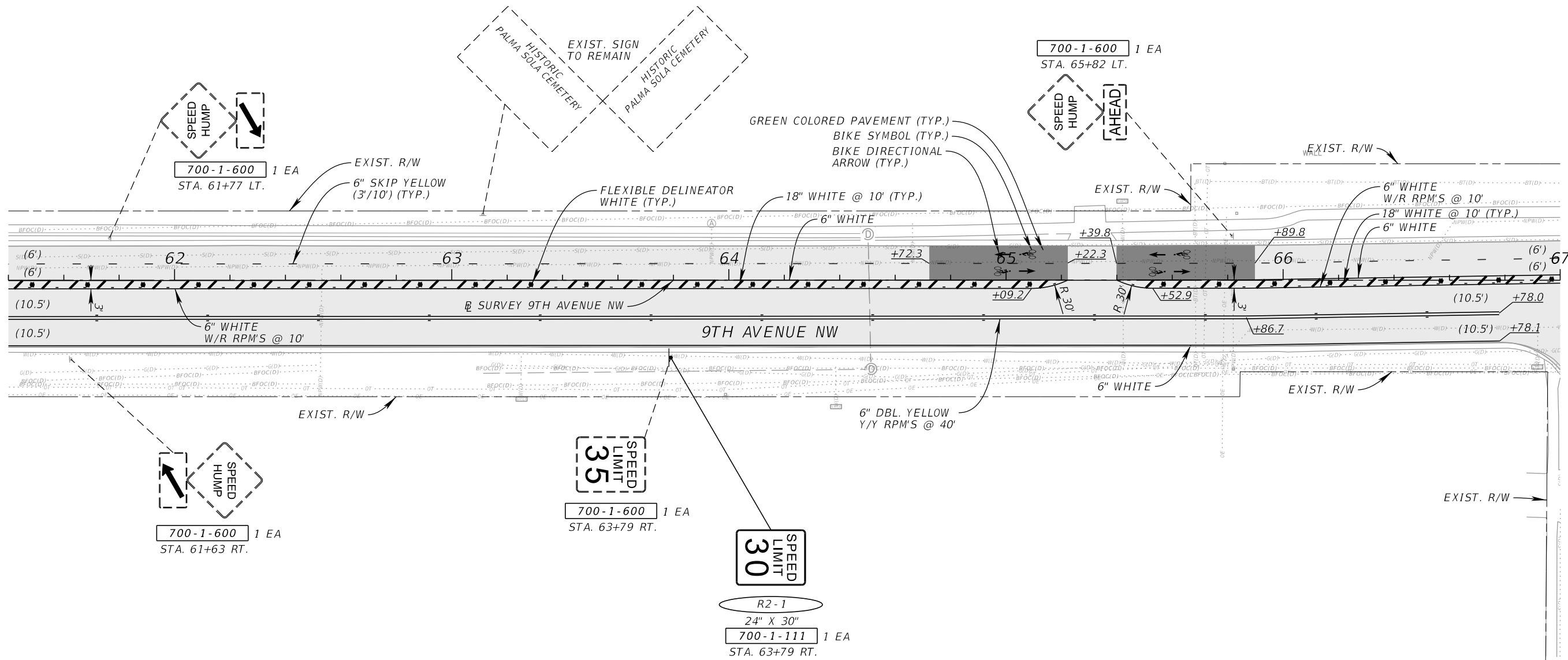
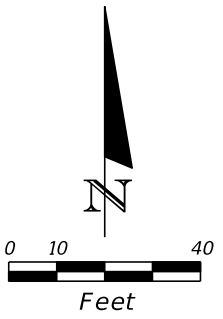
LICENSED PROFESSIONAL

JORDAN E. LEEP, P.E.
FL LICENSE NUMBER 76102

SIGNING AND PAVEMENT MARKING PLAN SHEET (6)

SHEET NUMBER
S-10

THE OFFICIAL RECORD OF THIS SHEET IS THE ELECTRONIC FILE DIGITALLY SIGNED AND SEALED UNDER RULE 61G15-23.004, F.A.C.



No.	REVISIONS	DATE	BY

Kimley»Horn

© 2025 KIMLEY-HORN AND ASSOCIATES, INC.
 1800 SECOND STREET, SUITE 900, SARASOTA, FL 34236
 PHONE: 941-379-7600
 WWW.KIMLEY-HORN.COM

KHA PROJECT 148400070
DATE 10/02/2025
SCALE AS SHOWN
DESIGNED BY
DRAWN BY
CHECKED BY

Manatee County
 FLORIDA

9TH AVENUE NW

MANATEE COUNTY

FL DATE:

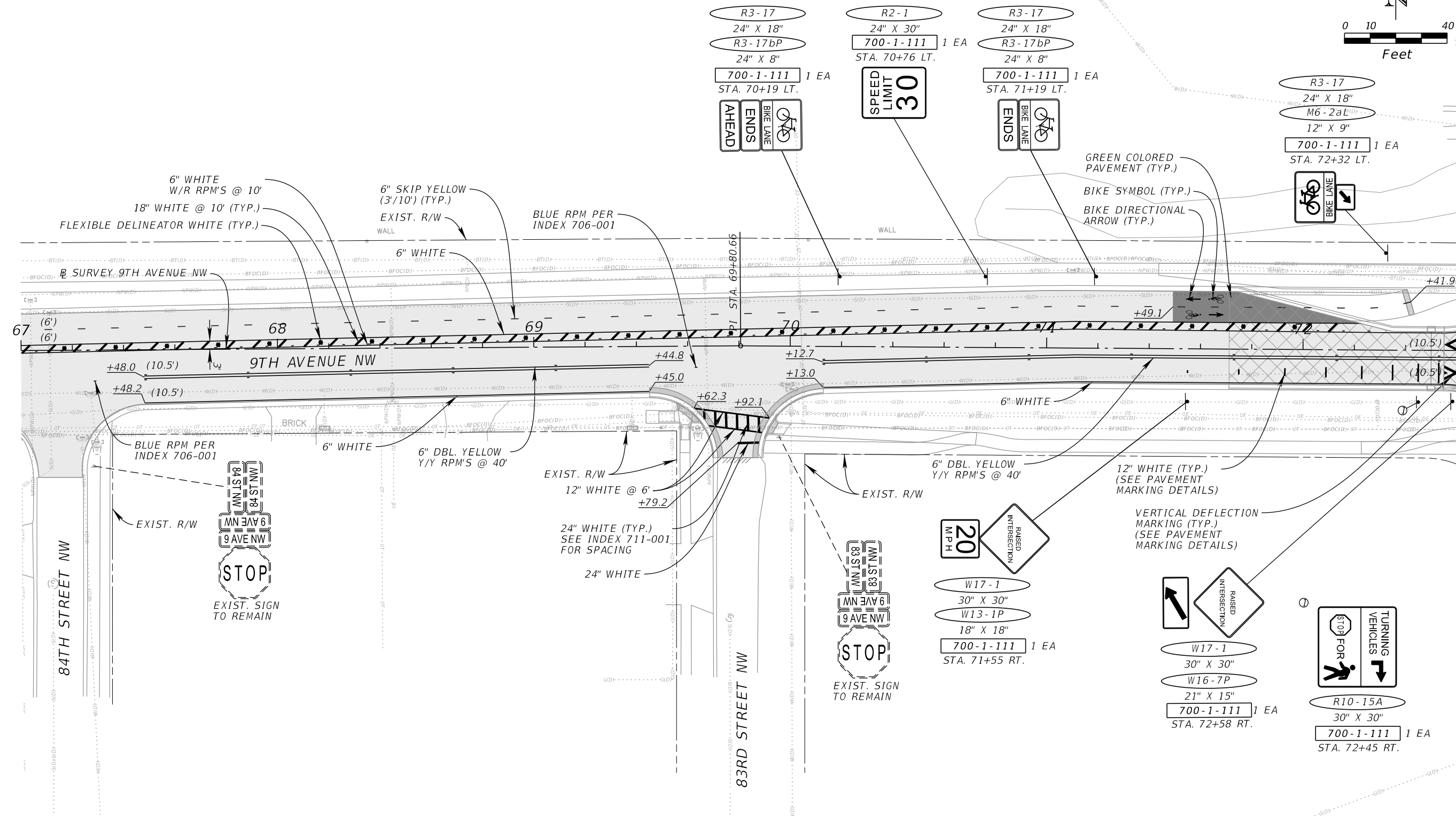
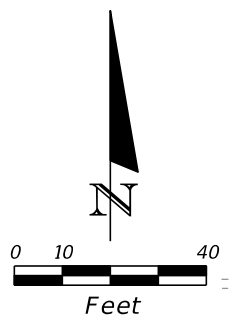
LICENSED PROFESSIONAL

JORDAN E. LEEP, P.E.
 FL LICENSE NUMBER 76102

SIGNING AND PAVEMENT MARKING PLAN SHEET (7)

SHEET NUMBER
S-11

THE OFFICIAL RECORD OF THIS SHEET IS THE ELECTRONIC FILE DIGITALLY SIGNED AND SEALED UNDER RULE 61G15-23.004, F.A.C.



No.	REVISIONS	DATE	BY

Kimley»Horn

© 2025 KIMLEY-HORN AND ASSOCIATES, INC.
 1800 SECOND STREET, SUITE 900, SARASOTA, FL 34236
 PHONE: 941-379-7600
 WWW.KIMLEY-HORN.COM

KHA PROJECT 148400070
DATE 10/02/2025
SCALE AS SHOWN
DESIGNED BY
DRAWN BY
CHECKED BY
MANATEE COUNTY

Manatee County
 FLORIDA

9TH AVENUE NW

LICENSED PROFESSIONAL

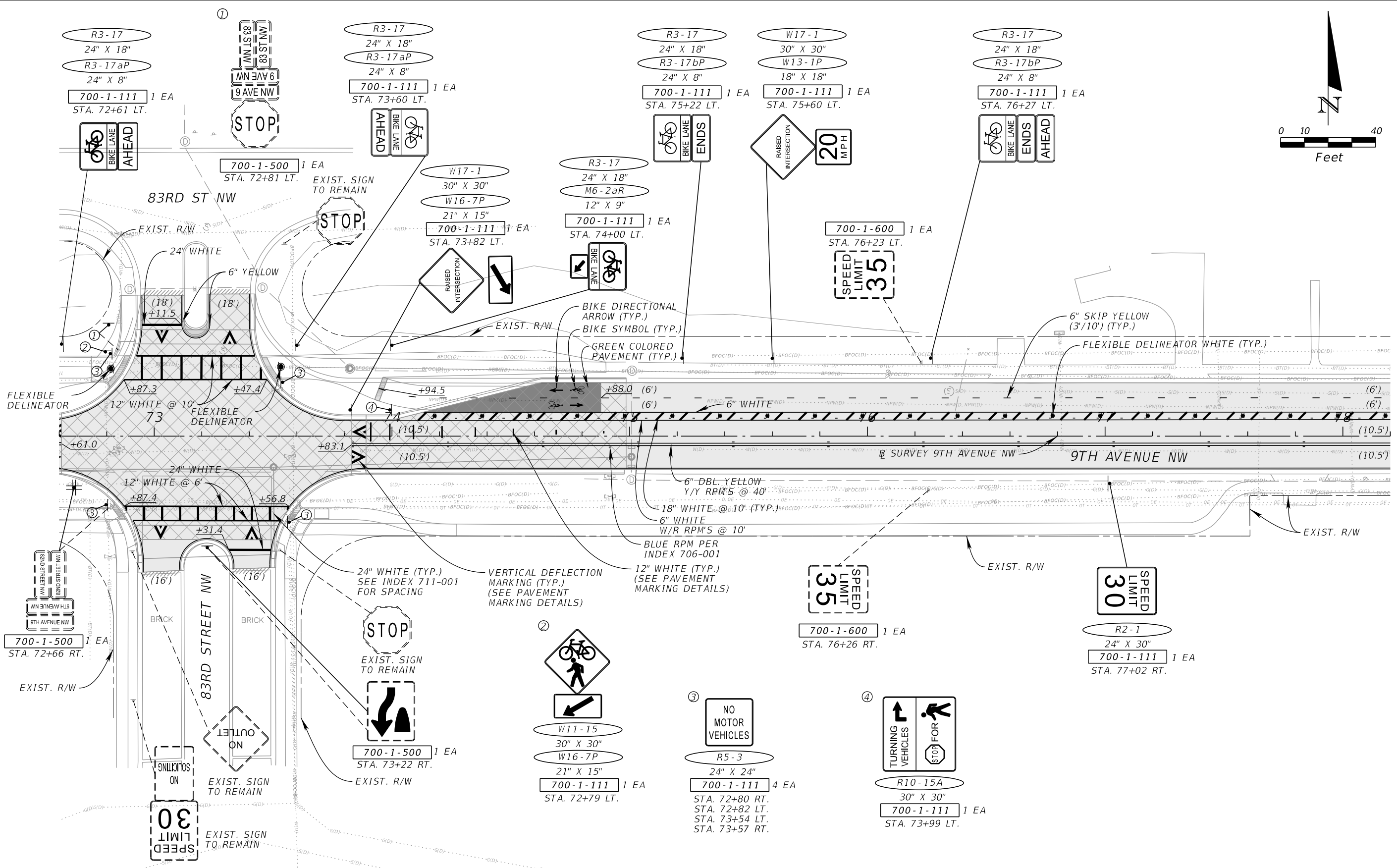
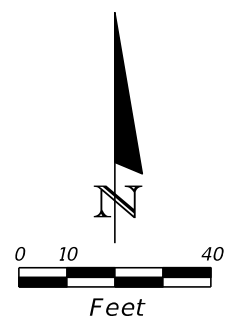
JORDAN E. LEEP, P.E.
 FL LICENSE NUMBER 76102

FL DATE:

SIGNING AND PAVEMENT MARKING PLAN SHEET (8)

SHEET NUMBER
S-12

THE OFFICIAL RECORD OF THIS SHEET IS THE ELECTRONIC FILE DIGITALLY SIGNED AND SEALED UNDER RULE 61G15-23.004, F.A.C.



No.	REVISIONS	DATE	BY

Kimley»Horn

© 2025 KIMLEY-HORN AND ASSOCIATES, INC.
1800 SECOND STREET, SUITE 900, SARASOTA, FL 34236
PHONE: 941-379-7600
WWW.KIMLEY-HORN.COM

KHA PROJECT
148400070
DATE
10/02/2025
SCALE AS SHOWN
DESIGNED BY
DRAWN BY
CHECKED BY

Manatee County

9TH AVENUE NW

MANATEE COUNTY

FL DATE:

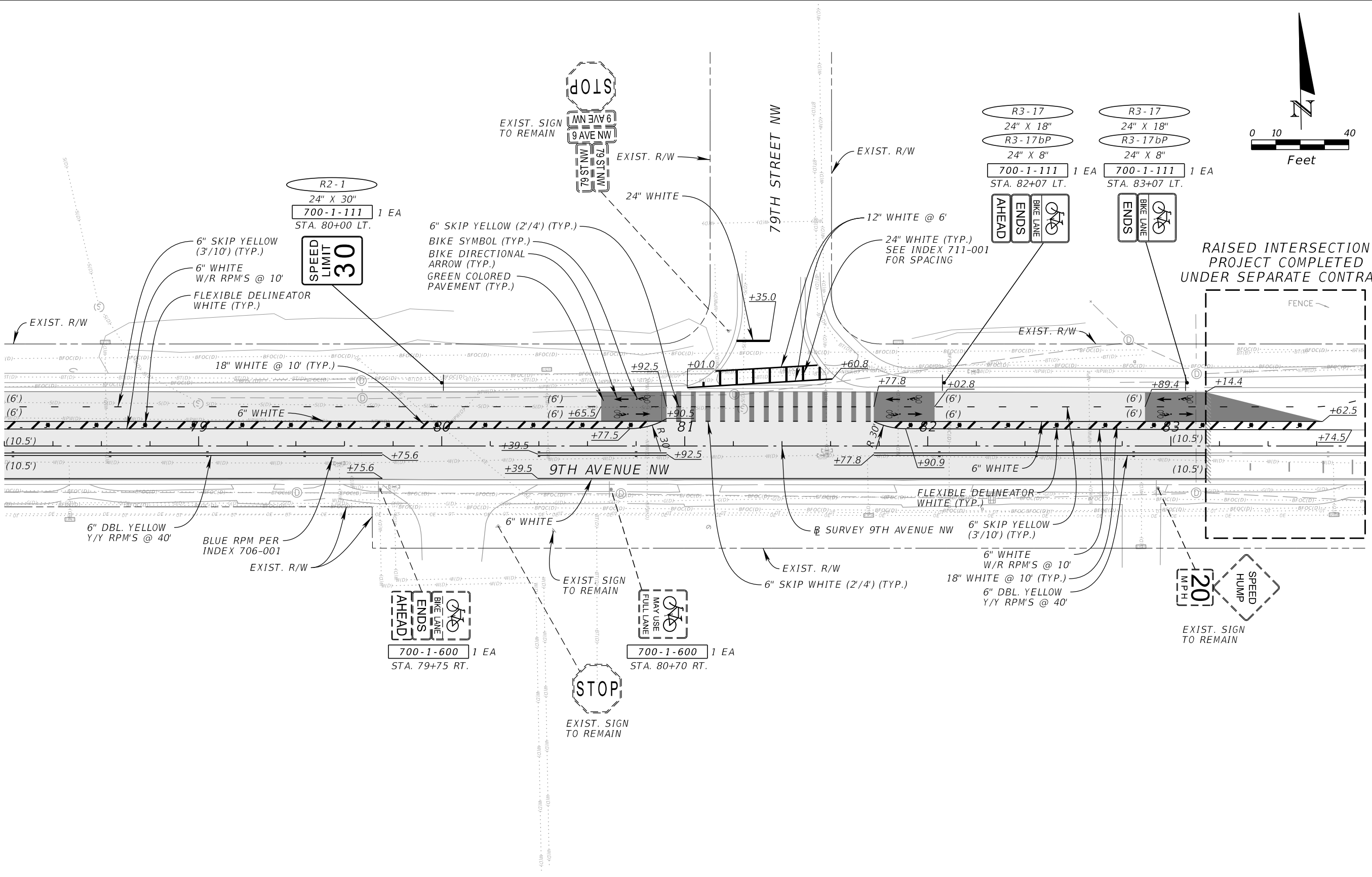
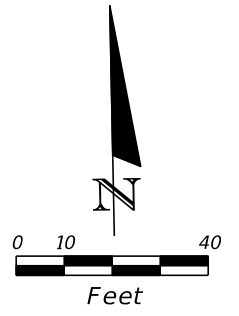
LICENSED PROFESSIONAL

JORDAN E. LEEP, P.E.
FL LICENSE NUMBER 76102

SIGNING AND PAVEMENT MARKING PLAN SHEET (9)

SHEET NUMBER
S-13

THE OFFICIAL RECORD OF THIS SHEET IS THE ELECTRONIC FILE DIGITALLY SIGNED AND SEALED UNDER RULE 61G15-23.004, F.A.C.



Kimley»Horn
 © 2025 KIMLEY-HORN AND ASSOCIATES, INC.
 1800 SECOND STREET, SUITE 900, SARASOTA, FL 34238
 PHONE: 941-379-7600
 WWW.KIMLEY-HORN.COM

KHA PROJECT 148400070
DATE 10/02/2025
SCALE AS SHOWN
DESIGNED BY
DRAWN BY
CHECKED BY

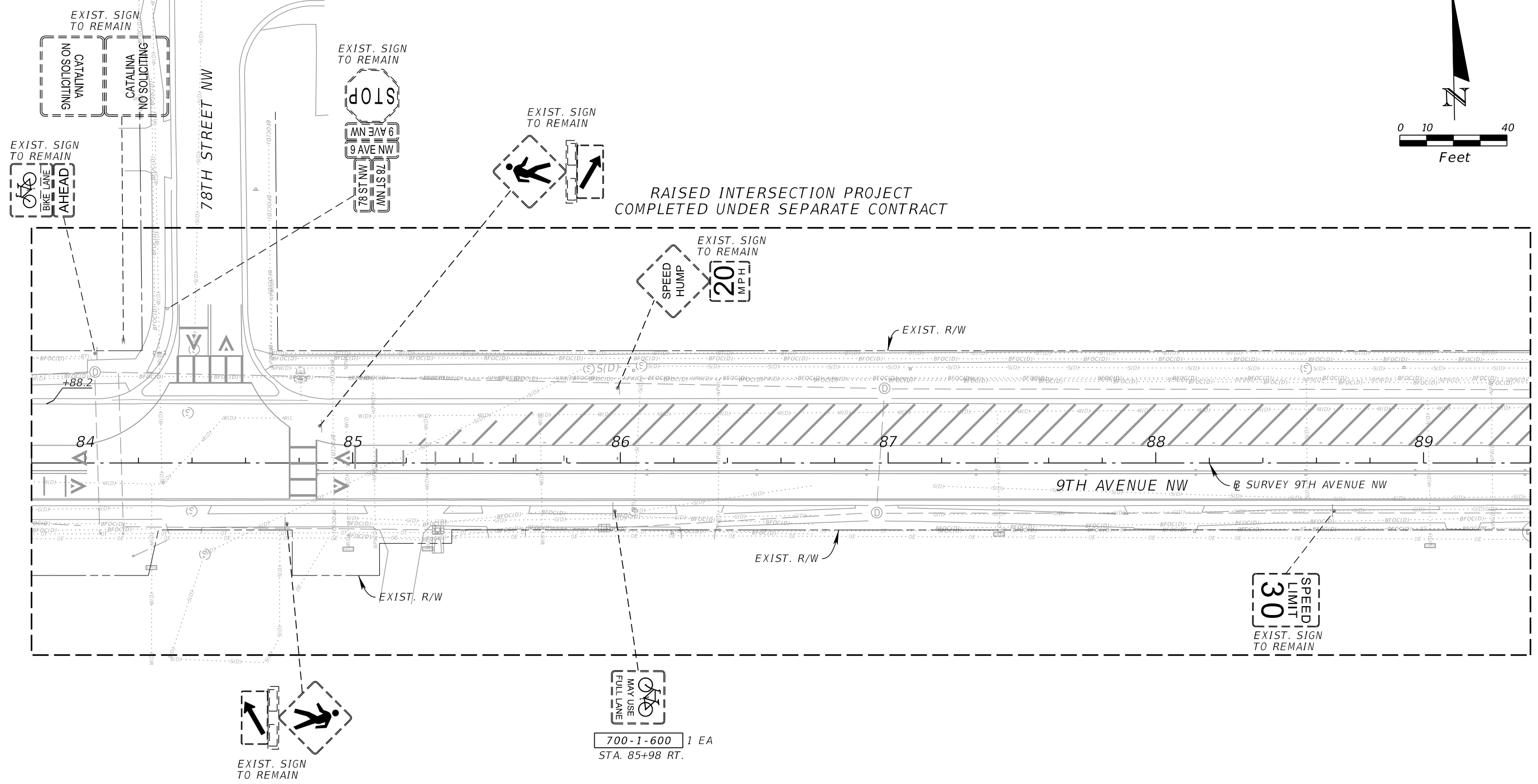
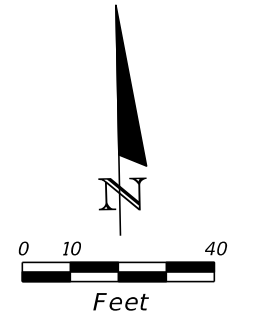
9TH AVENUE NW
 MANATEE COUNTY
 FL

LICENSED PROFESSIONAL
 JORDAN E. LEEP, P.E.
 FL LICENSE NUMBER
 76102

**SIGNING AND PAVEMENT
 MARKING PLAN SHEET (10)**

SHEET NUMBER
S-14

THE OFFICIAL RECORD OF THIS SHEET IS THE ELECTRONIC FILE DIGITALLY SIGNED AND SEALED UNDER RULE 61G15-23.004, F.A.C.



700-1-600 1 EA
STA. 85+98 RT.

No.	REVISIONS	DATE	BY

Kimley»Horn

© 2025 KIMLEY-HORN AND ASSOCIATES, INC.
1800 SECOND STREET, SUITE 900, SARASOTA, FL 34236
PHONE: 941-379-7600
WWW.KIMLEY-HORN.COM

KHA PROJECT 148400070
DATE 10/02/2025
SCALE AS SHOWN
DESIGNED BY
DRAWN BY
CHECKED BY

Manatee County
FLORIDA

9TH AVENUE NW

MANATEE COUNTY

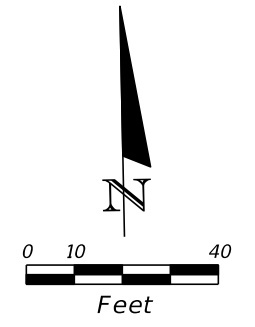
LICENSED PROFESSIONAL

JORDAN E. LEEP, P.E.
FL LICENSE NUMBER 76102

FL DATE:

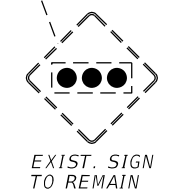
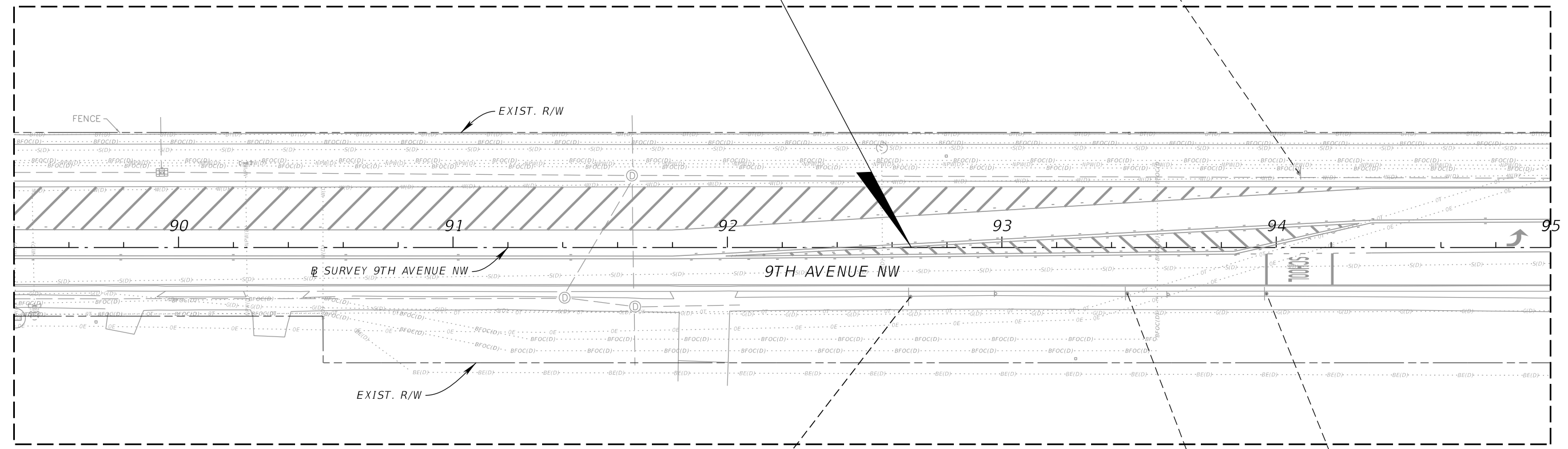
SIGNING AND PAVEMENT MARKING PLAN SHEET (11)

SHEET NUMBER
S-15



END SIGNING & PAVEMENT MARKING
 STA. 92+67.00
 @ SURVEY 9TH AVENUE

RAISED INTERSECTION PROJECT
 COMPLETED UNDER SEPARATE CONTRACT



No.	REVISIONS	DATE	BY

Kimley»Horn

© 2025 KIMLEY-HORN AND ASSOCIATES, INC.
 1800 SECOND STREET, SUITE 900, SARASOTA, FL 34236
 PHONE: 941-379-7600
 WWW.KIMLEY-HORN.COM

KHA PROJECT
 148400070
 DATE
 10/02/2025
 SCALE AS SHOWN
 DESIGNED BY
 DRAWN BY
 CHECKED BY

Manatee County
 FLORIDA

9TH AVENUE NW

MANATEE COUNTY

LICENSED PROFESSIONAL

JORDAN E. LEEP, P.E.
 FL LICENSE NUMBER
 76102

SIGNING AND PAVEMENT MARKING PLAN SHEET (12)

SHEET NUMBER
S-16

