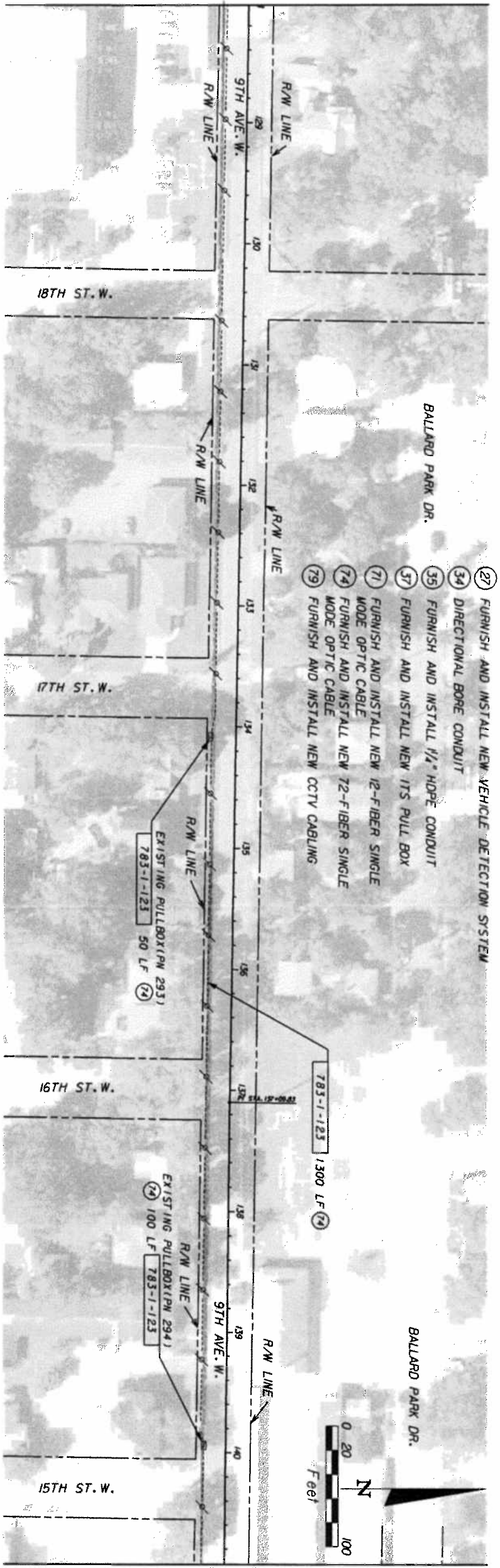
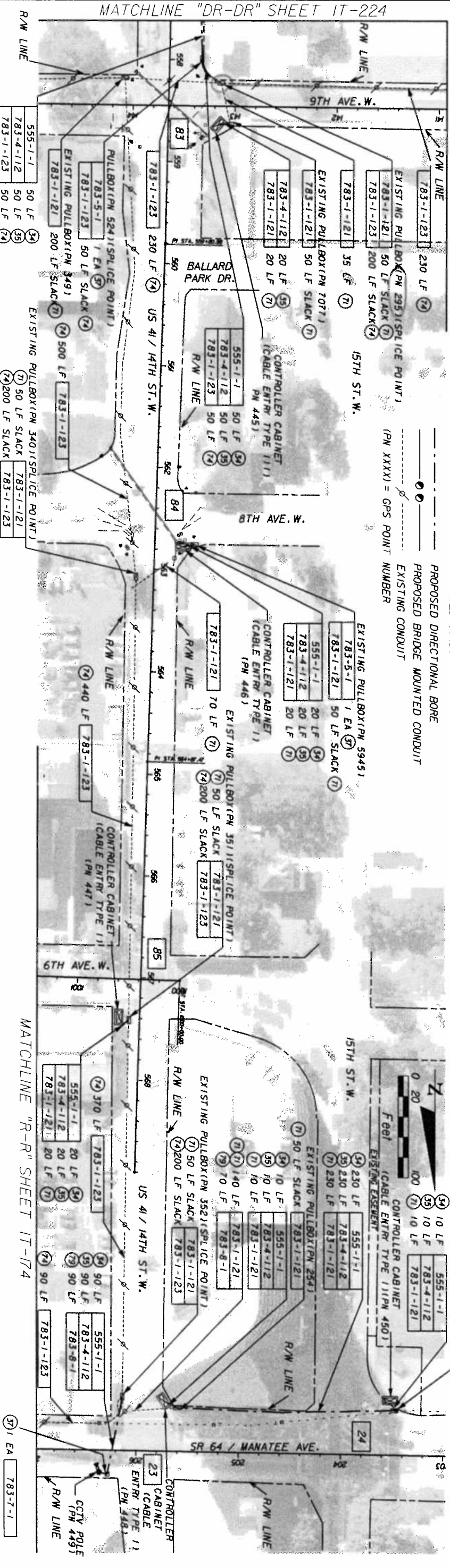


MATCHLINE "N-N" SHEET IT-171



MATCHLINE "Q-Q" SHEET IT-173

MATCHLINE "Q-Q" SHEET IT-173



MATCHLINE "R-R" SHEET IT-174

DATE	BY	DESCRIPTION

REVISIONS	DATE	BY	DESCRIPTION
34			555-1-1 50 LF
35			783-4-112 50 LF
36			783-1-123 50 LF
37			783-1-123 50 LF
38			783-1-121 200 LF SLACK
39			EXISTING PULLBOX (PN 524) (SPLICE POINT)
40			EXISTING PULLBOX (PN 549)
41			EXISTING PULLBOX (PN 340) (SPLICE POINT)
42			EXISTING PULLBOX (PN 293)
43			EXISTING PULLBOX (PN 294)
44			EXISTING PULLBOX (PN 352) (SPLICE POINT)
45			EXISTING PULLBOX (PN 294)
46			EXISTING PULLBOX (PN 294)
47			EXISTING PULLBOX (PN 294)
48			EXISTING PULLBOX (PN 294)
49			EXISTING PULLBOX (PN 294)
50			EXISTING PULLBOX (PN 294)
51			EXISTING PULLBOX (PN 294)
52			EXISTING PULLBOX (PN 294)
53			EXISTING PULLBOX (PN 294)
54			EXISTING PULLBOX (PN 294)
55			EXISTING PULLBOX (PN 294)
56			EXISTING PULLBOX (PN 294)
57			EXISTING PULLBOX (PN 294)
58			EXISTING PULLBOX (PN 294)
59			EXISTING PULLBOX (PN 294)
60			EXISTING PULLBOX (PN 294)
61			EXISTING PULLBOX (PN 294)
62			EXISTING PULLBOX (PN 294)
63			EXISTING PULLBOX (PN 294)
64			EXISTING PULLBOX (PN 294)
65			EXISTING PULLBOX (PN 294)
66			EXISTING PULLBOX (PN 294)
67			EXISTING PULLBOX (PN 294)
68			EXISTING PULLBOX (PN 294)
69			EXISTING PULLBOX (PN 294)
70			EXISTING PULLBOX (PN 294)
71			EXISTING PULLBOX (PN 294)
72			EXISTING PULLBOX (PN 294)
73			EXISTING PULLBOX (PN 294)
74			EXISTING PULLBOX (PN 294)
75			EXISTING PULLBOX (PN 294)
76			EXISTING PULLBOX (PN 294)
77			EXISTING PULLBOX (PN 294)
78			EXISTING PULLBOX (PN 294)
79			EXISTING PULLBOX (PN 294)
80			EXISTING PULLBOX (PN 294)
81			EXISTING PULLBOX (PN 294)
82			EXISTING PULLBOX (PN 294)
83			EXISTING PULLBOX (PN 294)
84			EXISTING PULLBOX (PN 294)
85			EXISTING PULLBOX (PN 294)
86			EXISTING PULLBOX (PN 294)
87			EXISTING PULLBOX (PN 294)
88			EXISTING PULLBOX (PN 294)
89			EXISTING PULLBOX (PN 294)
90			EXISTING PULLBOX (PN 294)
91			EXISTING PULLBOX (PN 294)
92			EXISTING PULLBOX (PN 294)
93			EXISTING PULLBOX (PN 294)
94			EXISTING PULLBOX (PN 294)
95			EXISTING PULLBOX (PN 294)
96			EXISTING PULLBOX (PN 294)
97			EXISTING PULLBOX (PN 294)
98			EXISTING PULLBOX (PN 294)
99			EXISTING PULLBOX (PN 294)
100			EXISTING PULLBOX (PN 294)

DATE	BY	DESCRIPTION

RALEMAN
 F. R. Almond & Associates, Inc.
 4305 N.W. 4th STREET
 SUITE 200
 MIAMI, FL 33178
 TEL: (305) 591-8777
 FAX: (305) 591-8778
 C.A. No. EB 4658
 ERH Spillman, P.E. No. 58771

STATE OF FLORIDA
 DEPARTMENT OF TRANSPORTATION
 COUNTY: MANATEE
 FINANCIAL PROJECT ID: 416119-1-52-01

INTERCONNECT PLANS
 9TH AVE. W.
 15TH ST. W.

SHEET NO. IT-173