

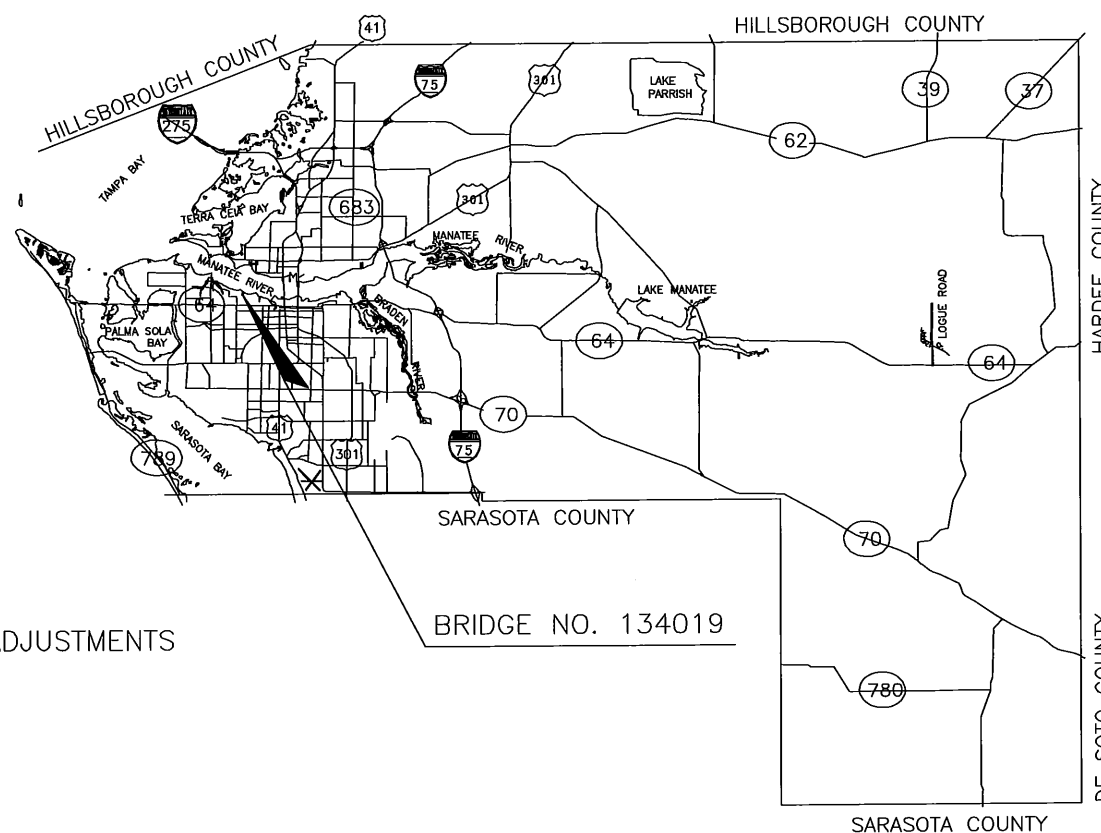
RIVERVIEW BOULEVARD BRIDGE OVER McLEWIS BAYOU

BRIDGE NO. 134019

MANATEE COUNTY PROJECT NO. 6013260

NO. INDEX OF SHEETS

1	KEY SHEET
2	SUMMARY OF QUANTITIES
3	GENERAL NOTES
4	ROADWAY TYPICAL SECTION
5	PLAN & PROFILE
6-8	CROSS SECTIONS
9	DETOUR PLAN
10	BRIDGE PLAN & ELEVATION
11	REPORT OF CORE BORINGS
12	FOUNDATION LAYOUT
13	STEEL SHEET PILE RETAINING WALL
14	STEEL SHEET PILE RETAINING WALL DETAILS
15	END BENTS 1 & 2
16	END BENT DETAILS
17	SUPERSTRUCTURE TYPICAL SECTION
18	FRAMING PLAN
19	APPROACH SLAB DETAILS
20	REINFORCING BAR LIST
21	WATER MAIN & FORCE MAIN RELOCATIONS, AND UTILITY ADJUSTMENTS
22	UTILITY RELOCATION GENERAL NOTES & DETAILS
23	PROPOSED DREDGING PLAN



ATTENTION IS DIRECTED TO THE FACT THAT THESE PLANS MAY HAVE BEEN ALTERED IN SIZE BY REPRODUCTION. DO NOT USE SCALED DATA.

PLANS PREPARED BY:



www.wadetrim.com Building relationships on a foundation of excellence
 8745 HENDERSON ROAD, SUITE 220
 TAMPA, FLORIDA 33634
 813.662.6566 FAX 813.664.5690
 CONTRACT NO. C-982826TC
 VENDOR NO. 60-2417170
 CERTIFICATE OF AUTHORIZATION NO. 3962

GOVERNING STANDARDS AND SPECIFICATIONS:

FLORIDA DEPARTMENT OF TRANSPORTATION,
 DESIGN STANDARDS DATED 2010 ALONG
 WITH CURRENT STANDARDS MODIFICATIONS

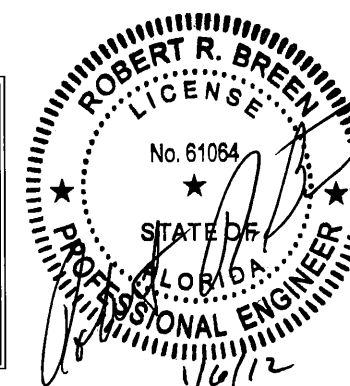
STANDARD SPECIFICATIONS FOR ROAD AND BRIDGE
 CONSTRUCTION DATED 2010, AS AMENDED BY
 CONTRACT DOCUMENTS

MANATEE COUNTY TRANSPORTATION DEPARTMENT
 HIGHWAY & DRAINAGE STANDARDS DATED JUNE, 2007

MANATEE COUNTY UTILITY STANDARDS AND SPECIFICATIONS
 DATED MARCH, 2009.

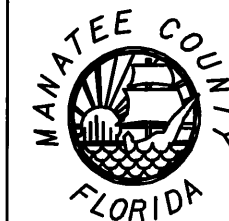
REVISIONS

LENGTH OF PROJECT	
	FEET
ROADWAY	340'
BRIDGE	35'
NET LENGTH OF PROJ.	375'
EXCEPTIONS	N/A
GROSS LENGTH OF PROJ.	375'



ENGINEER OF RECORD:
 ROBERT R. BREEN, PE
 ROADWAY PLANS
 APPROVED BY: ROBERT R. BREEN
 DATE: 1-6-2012
 P.E. NO.: 61064

MANATEE COUNTY PROJECT MANAGER : EYRA CASH, P.E.



PREPARED BY:



WADE TRIM

www.wadetrtrim.com
 8745 Henderson Road, Suite 220
 Tampa, FL 33634
 813.882.8366 FAX 813.884.5960
 Certificate of Authorization No. 3962

RIVERVIEW BOULEVARD BRIDGE OVER MCLEWIS BAYOU

BRIDGE No. 134019
MANATEE COUNTY, FLORIDA

SUMMARY OF QUANTITIES

SUMMARY OF QUANTITIES

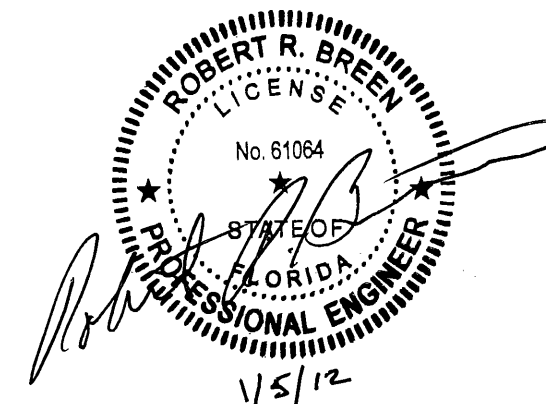
ITEM NO.	FDOT PAY ITEM NO.	DESCRIPTION	UNIT	QUANTITY
1	101-1	MOBILIZATION	LS	1
2	102-1	MAINTENANCE OF TRAFFIC	LS	1
3	104-10-3	SEDIMENT BARRIER	LF	740
4	104-11	TURBIDITY BARRIER FLOATING	LF	233
5	104-18	INLET PROTECTION SYSTEM	EA	1
6	110-1-1	CLEARING AND GRUBBING	LS	1
7	110-3	REMOVAL OF EXISTING STRUCTURE	LS	1
8	110-7-1	MAILBOX, F&I SINGLE	EA	1
9	120-1	REGULAR EXCAVATION	CY	134
10	120-5	CHANNEL EXCAVATION	CY	135
11	120-6	EMBANKMENT	CY	64
12	160-4	TYPE B STABILIZATION	SY	1108
13	285-701	OPTIONAL BASE, GROUP 01	SY	222
14	285-706	OPTIONAL BASE, GROUP 06	SY	706
15	334-1-12	ASPHALTIC CONCRETE, TRAFFIC B, SUPERPAVE	TN	123.2
16	339-1	MISCELLANEOUS ASPHALT PAVEMENT	TN	8.2
17	400-2-10	CONCRETE CLASS II (APPROACH SLABS)	CY	82
18	400-4-4	CONCRETE CLASS IV (SUPERSTRUCTURE)	CY	25
19	400-4-5	CONCRETE CLASS IV (SUBSTRUCTURE)	CY	136
20	400-7	BRIDGE FLOOR GROOVING	SY	125
21	415-1-4	REINFORCING STEEL (SUPERSTRUCTURE)	LB	1573
22	415-1-5	REINFORCING STEEL (SUBSTRUCTURE)	LB	13383
23	415-1-9	REINFORCING STEEL (APPROACH SLABS)	LB	15618
24	450-3-25	PRESTRESSED SLAB UNITS, WIDTH 60", THICKNESS 15" (7 PIECES)	LF	244
25	455-14-3	CONCRETE SHEET PILING, 10"x30" (57 PIECES)	LF	920
26	455-14-5	CONCRETE SHEET PILING, SPECIAL, CORNER (5 PIECES)	LF	100
27	455-34-5	PRESTRESSED CONCRETE PILING, 24" SQ	LF	280
28	455-133-3	STEEL SHEET PILING (PERMANENT)	SF	5766
29	455-143-5	TEST PILES-PRESTRESSED CONCRETE, 24" SQ	LF	70
30	458-1-11	BRIDGE DECK EXPANSION JOINT, F & I, POURED JOINT WITH BACKER ROD	LF	70
31	460-70-2	ALUMINUM BULLET RAILING - DOUBLE RAIL	LF	378
32	521-5-1	CONCRETE TRAFFIC RAILING, BRIDGE 32" F SHAPE	LF	378
33	522-2	SIDEWALK CONCRETE, 6" THICK	SY	31
34	530-3-3	RIP RAP-RUBBLE, BANK AND SHORE	TN	50.2
35	530-3-4	RIP RAP-RUBBLE, DITCH LINING	TN	38.9
36	530-74	BEDDING STONE	TN	27.1
37	536-1-1	GUARDRAIL, ROADWAY	LF	162.5
38	536-85-24	GUARDRAIL END ANCHORAGE ASSEMBLY-PARALLEL	EA	2
39	544-75-40	CRASH CUSHION - OPTIONAL	EA	2
40	570-1-2	PERFORMANCE TURF, SOD	SY	371
41	700-20-11	SINGLE POST SIGN, FURNISH & INSTALL	AS	2
42	700-20-60	SINGLE POST SIGN, REMOVE	EA	4
43	705-10-3	OBJECT MARKER, TYPE 3	EA	4
44	706-3	RETRO-REFLECTIVE PAVEMENT MARKERS	EA	18
45	711-11-111	THERMOPLASTIC, STANDARD, WHITE, SOLID 6"	NM	0.14
46	711-11-211	THERMOPLASTIC, STANDARD, YELLOW, SOLID 6"	NM	0.14
47		UTILITY COORDINATION	LS	1
48		MISCELLANEOUS WORK AND CLEAN UP	LS	1
		DISCRETIONARY WORK (ROADWAY)		(DO NOT BID)

49		LEAK DETECTION VALVE AND MANHOLE, 8"	EA	1
50		UTILITY PIPE, DIRECTIONAL BORE, HDPE DR-11 CLASS 160, WATER, 8.0"	LF	368
51		UTILITY PIPE, REMOVE & DISPOSE, 8.0"	LF	354
52		UTILITY FIXTURES, F&I, 8.0", 45 DEGREE BEND	EA	4
53		UTILITY FIXTURES, F&I, 8.0", GATE VALVE ASSEMBLY	EA	1
		DISCRETIONARY WORK (WATERMAIN)		(DO NOT BID)

54		UTILITY PIPE, DIRECTIONAL BORE, HDPE DR-11 CLASS 160, SEWER, 4.0"	LF	325
55		UTILITY PIPE, REMOVE & DISPOSE, 4.0"	LF	305
56		UTILITY FIXTURES, F&I, 4.0", PLUG VALVE ASSEMBLY	EA	2
57		UTILITY FIXTURES, F & I, 4.0", 45 DEGREE BEND	EA	4
58		ABOVE GROUND AIR RELEASE VALVE ASSY. FOR FORCE MAINS	EA	1
59		ADJUST MANHOLE TOP, SANITARY	EA	1
		DISCRETIONARY WORK (SANITARY SEWER)		(DO NOT BID)

PAY ITEM NOTES:

- 102-1 INCLUDES ALL LABOR, MATERIALS, AND TRAFFIC CONTROL DEVICES ASSOCIATED WITH MOT INCLUDING DETOURS. SEE SHEET 9 FOR DETOUR PLAN
- 110-1-1 CLEARING AND GRUBBING SHALL INCLUDE THE COST OF REMOVAL AND DISPOSAL OF THE EXISTING ASPHALT PAVEMENT, EXISTING CONCRETE PAVEMENT, GUARDRAIL, CONCRETE POST AND TREES. THIS PAY ITEM ALSO INCLUDES THE SELECTIVE CLEARING OF EXOTIC AND NUISANCE SPECIES IDENTIFIED BY THE ENGINEER.
- 110-3 REMOVAL OF EXISTING STRUCTURES SHALL INCLUDE THE COST OF REMOVAL AND DISPOSAL OF THE EXISTING CONCRETE BRIDGE, INCLUDING BUT NOT LIMITED TO PILES, ABUTMENTS, RETAINING WALLS AND RIP RAP.
- 120-5 SHALL INCLUDE ALL WORK DESCRIBED IN THE DREDGING GENERAL NOTES SHEET 23 FOR REQUIREMENTS IN RELATIONSHIP TO CHANNEL EXCAVATION.
- 160-4 INCLUDES 12 SY FOR TURNOUT CONSTRUCTION AND ALL REQUIRED LABOR FOR 285-701 PLACEMENT OF MATERIALS
- 334-1-12 INCLUDES 2 TONS FOR TURNOUT CONSTRUCTION AND ALL REQUIRED LABOR FOR PLACEMENT OF MATERIALS.
- 450-3-25 PRESTRESSED SLAB UNITS SHALL INCLUDE THE COST OF THE POST TENSIONING SYSTEM AND THE NON-SHRINK GROUT REQUIRED FOR ASSEMBLY.
- 455-14-3 PRECAST CONCRETE SHEET PILE SHALL INCLUDE ALL LABOR AND MATERIALS, INCLUDING PREFORMED HOLES, FILTER CLOTH AND PRESSURE GROUTING AS SHOWN IN THE PLANS.
- 455-143-3 STEEL SHEET PILES SHALL INCLUDE ALL LABOR AND MATERIALS. IT SHALL INCLUDE PERFORMED HOLES, AND THE JOINT WATERPROOFING AT THE INTERFACE WITH THE CONCRETE SHEET PILING. HEADED WELDED STUDS ATTACHED TO THE SHEET PILE FACES SHALL ALSO BE INCLUDED IN THIS PAY ITEM.
- 455-143-5 TEST PILES (24" SQ) WILL BE PAID FOR BASED ON THE LENGTH OF PILING FURNISHED AND DRIVEN. THE COUNTY WILL INCUR THE COST OF THE PDA TESTING REQUIRED TO DEVELOP THE DRIVING CRITERIA. ANY REQUIRED PILE SPLICES SHALL BE INCIDENTAL.
- 521-5-1 THE COST OF THE ADDITIONAL CONCRETE USED FOR THE ONE FOOT VERTICAL EXTENSION OF THE TRAFFIC RAILING ALONG THE ROADWAY PORTION (AS SHOWN ON SHEET 14) SHALL BE INCLUDED IN THE UNIT PRICE.
- 522-2 ITEM IS TO PROVIDE FOR THE CONSTRUCTION OF CONCRETE TURNOUTS AND ALL REQUIRED LABOR FOR PLACEMENT OF MATERIALS.
- 536-1-1 SHALL INCLUDE THE COST FOR BRIDGE ANCHORAGE ASSEMBLY, THRIE BEAM PANELS, NESTED PANELS, W-THRIE BEAM TRANSITION PANEL, BACK UP PLATE, FILLER PLATE AND ACCESSORIES. REFER TO FDOT STANDARD INDEX 400 SHEET 13 OF 26 FOR MORE INFORMATION REGARDING PRICE, PAYMENT AND INSTALLATION.
- 570-1-2 SHALL INCLUDE ALL ASSOCIATED LABOR, COST AND MATERIALS FOR MOWING AND LITTER REMOVAL ASSOCIATED WITH THIS ITEM.



REVISION	DATE
BY	DATE
SURVEYED ZNS	3/01
DESIGNED RRB	7/09
DRAWN DAC	10/10
CHECKED LJJ/RRB	10/10

SEAL

ROBERT R. BREEN, PE No. 61064

GENERAL NOTES

1. THE CONTRACTOR SHALL VERIFY ALL DIMENSIONS, UTILITIES, AND EXISTING CONDITIONS BEFORE STARTING WORK. THE CONTRACTOR SHALL BRING ANY DISCREPANCIES TO THE ATTENTION OF THE ENGINEER PRIOR TO CONSTRUCTION
2. CONSTRUCTION DEBRIS SHALL BE KEPT OUT OF THE CHANNEL AT ALL TIMES.

EROSION CONTROL

1. THE CONTRACTOR SHALL CONTROL EROSION IN ACCORDANCE WITH PERMIT REQUIREMENTS. THE CONTRACTORS EROSION CONTROL SHALL INCLUDE, BUT NOT BE LIMITED TO THE USE OF FLOATING TURBIDITY BARRIER, STAKED SILT FENCE AND SYNTHETIC BALES.
2. THE CONTRACTOR SHALL PERFORM DAILY SITE INSPECTIONS FOR ANY POTENTIAL EROSION PROBLEMS. IF ANY POTENTIAL EROSION PROBLEMS ARE ENCOUNTERED OR HAVE OCCURED, THE CONTRACTOR SHALL CORRECT THE EROSION PROBLEM AND INSTALL PROPER EROSION CONTROL MEASURES IMMEDIATELY.

MAINTENANCE OF TRAFFIC

1. MAINTENANCE AND PROTECTION OF TRAFFIC CONTROL SHALL CONFORM TO FDOT "MANUAL ON UNIFORM TRAFFIC CONTROL DEVICES" AND "DESIGN STANDARDS" DATED 2010 (600 SERIES), AS A MINIMUM.
2. THE CONTRACTOR SHALL OBTAIN A RIGHT OF WAY USE PERMIT FROM THE COUNTY PRIOR TO ALL ROAD CLOSURE.
3. THE CONTRACTOR SHALL NOTIFY ALL EMERGENCY AND RESCUE AGENCIES LOCATED IN THE PROJECT VICINITY TWO WEEKS IN ADVANCE OF ANY ROAD AND/OR WATERWAY CLOSURES OR RESTRICTIONS.
4. ALL EXISTING MANATEE COUNTY SIGNS THAT CONFLICT WITH CONSTRUCTION OPERATIONS SHALL BE REMOVED, STOCKPILED AND REINSTALLED BY THE CONTRACTOR.
5. THE CONTRACTOR SHALL MAINTAIN BOAT TRAFFIC. THE BRIDGE SHALL ONLY REMAIN CLOSED MONDAY - FRIDAY BETWEEN THE HOURS OF 7 AM - 4PM. THE WATERWAY SHALL BE OPEN TO BOAT TRAFFIC AT ALL OTHER TIMES AND 24 HRS ON WEEKENDS. IF IT IS NECESSARY TO CLOSE THE WATERWAY, THE CONTRACTOR SHALL NOTIFY THE COUNTY AND PLACE DOOR HANGERS ON ALL AFFECTED PARTIES SOUTH OF THE BRIDGE SEVEN DAYS PRIOR TO CLOSURE.

STRUCTURAL SPECIFICATIONS & DESIGN CRITERIA

STANDARD SPECIFICATIONS:

FLORIDA DEPARTMENT OF TRANSPORTATION, "STANDARD SPECIFICATIONS FOR ROAD AND BRIDGE CONSTRUCTION", 2010 EDITION, AND SUPPLEMENT THERETO, WITH MODIFICATIONS AS CONTAINED HEREIN. WHEREVER IN THE STANDARD SPECIFICATIONS THE TERM SECRETARY OR DIRECTOR OF ENGINEERING IS USED, THE MEANING SHALL BE THE COUNTY ENGINEER OR HIS APPOINTED REPRESENTATIVE.

THE FOLLOWING FLORIDA DEPARTMENT OF TRANSPORTATION "DESIGN STANDARDS", 2010 EDITION, SHALL BE REFERRED TO AND FOLLOWED ACCORDINGLY:

- TRAFFIC RAILING-32" F SHAPE (INDEX No. 420)
- ALUMINUM PEDESTRIAN/BICYCLE BULLET RAILING FOR TRAFFIC RAILING (32 "F" SHAPE) (INDEX 821)
- NOTES AND DETAILS FOR PRECAST CONCRETE SHEET PILES (INDEX No. 6040)
- PRECAST CONCRETE SHEET PILE TYPE "A"-10 INCH THICK (INDEX No. 6040)
- PRECAST CONCRETE SHEET PILE TYPE "B"-VARIABLE ANGLE CORNER PILE (INDEX No. 6040)
- NOTES AND DETAILS FOR SQUARE PRESTRESSED CONCRETE PILES (INDEX No. 20600)
- SQUARE PRESTRESSED CONCRETE PILE SPLICES (INDEX No. 20601)
- 24" SQUARE PRESTRESSED CONCRETE PILE (INDEX No. 20624)
- APPROACH SLABS (FLEXIBLE PAVEMENT APPROACHES) (INDEX No. 20900)
- STANDARD BAR BENDING DETAILS (INDEX No. 21300)

DESIGN VEHICLE: HL-193

FOUNDATION:

FOUNDATION DESIGN IS BASED UPON SUBSURFACE SOILS INVESTIGATION, PROJECT NO 387-15026, DATED APRIL 11, 2001, BY P.S.I. THE PILING SHALL BE INSTALLED ACCORDING TO THIS REPORT AND SECTION 455-7 OF THE F.D.O.T. STANDARD SPECIFICATIONS. PILE DRIVING ANALIZER SHALL BE USED TO DETERMINE THE PILE CAPACITY. THE COUNTY WILL PROVIDE MONITORING.

PILE DESIGN CAPACITIES:

24" SQUARE PRESTRESSED PILES SHALL BE DRIVEN TO ACHIEVE THE FOLLOWING MINIMUM CAPACITIES: VERTICAL: 80 TONS LATERAL: 4 TONS

REINFORCING STEEL:

REINFORCING STEEL SHALL CONFORM TO ASTM 615, GRADE 60.

PRESTRESSED PILES:

THE PILES SHALL BE 24" SQUARE AND DRIVEN TO A MINIMUM TIP DEPTH OF APPROXIMATELY 20 FT. THE PILES SHALL ALSO CONFORM TO ALL FDOT SPECIFICATIONS FOR 24" SQUARE PRE-STRESSED PILING.

PRECAST PRESTRESSED FLAT SLABS:

PRECAST PRESTRESSED FLAT SLABS: THE PRECAST PRESTRESSED FLAT SLAB UNITS SHALL BE IN ACCORDANCE WITH SECTION 450 OF THE F.D.O.T 2010 SPECIFICATIONS.

CONCRETE:

CONCRETE SHALL BE IN ACCORDANCE WITH SECTION 346 OF THE F.D.O.T. 2010 SPECIFICATIONS.

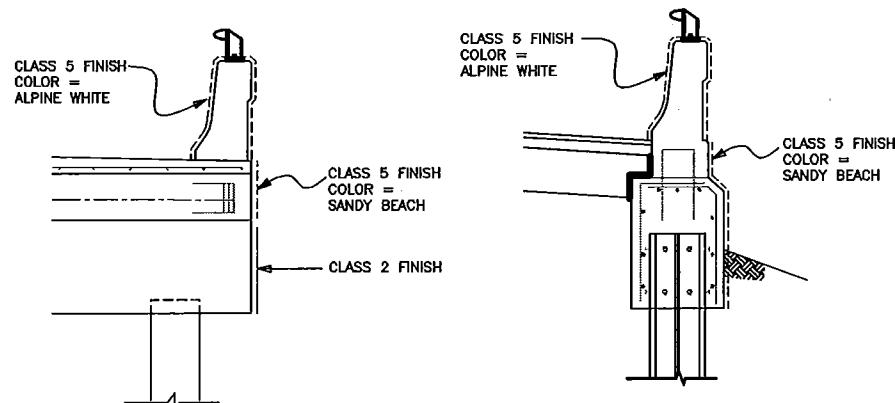
CLASS	LOCATION	MINIMUM 28 DAY COMPRESSION STRENGTH (PSI)
IV	PRESTRESSED FLAT SLABS (f'ci = 4,000)	5500
IV	CAST-IN-PLACE (SUPERSTRUCTURE)	5500
IV	CAST-IN-PLACE (SUBSTRUCTURE)	5500
V	PRESTRESSED PILES (f'ci = 4,500)	6000
II	BARRIER RAIL	3400
II	APPROACH SLABS	3400

FINISHES:

CONCRETE SHEET PILE AND PILE CAPS SHALL RECEIVE A CLASS 2 APPLIED FINISH.

TRAFFIC RAILINGS, WING POSTS, RETAINING WALL CAP, AND DECK EDGE SHALL RECEIVE AN ALGAE RESISTANT CLASS 5 APPLIED FINISH AS MANUFACTURED BY THORO OR AN APPROVED EQUAL.

APPROACH SLABS SHALL RECEIVE A CLASS 4 APPLIED FINISH.



SURFACE FINISH DETAIL @ DECK

SURFACE FINISH DETAIL @ RETAINING WALL

THE COST TO APPLY THE CLASS 2 FINISH SHALL BE INCIDENTAL TO PAY ITEM 400-4-5

SUBMITTALS:

CONTRACTOR SHALL SUBMIT THE FOLLOWING SHOP DRAWINGS TO THE ENGINEER FOR APPROVAL:

- CONCRETE MIX DESIGNS
- CLASS 5 FINISH
- SHEET PILES (CONCRETE & STEEL)
- APPROACH SLABS
- PRECAST PRESTRESSED FLAT SLABS
- FM & WM PIPE AND FITTINGS
- PRESTRESSED CONCRETE PILES

BEFORE/ DURING /AFTER COMPLETION OF THE WORK, THE CONTRACTOR SHALL SUBMIT TO THE ENGINEER, FOUR (4) SETS OF "AS-BUILT" PLANS CERTIFIED BY AN ENGINEER OR LAND SURVEYOR REGISTERED IN THE STATE OF FLORIDA. THE DRAWINGS SHALL INCLUDE CROSS SECTIONS OF McLEWIS BAYOU EXTENDING 50 FEET UP STREAM AND DOWN STREAM OF THE BRIDGE. CROSS SECTIONS SHALL BE TAKEN AT 25 FOOT INTERVALS.

CONSTRUCTION

ALL SHEET PILE JOINTS AND WEEP HOLES SHALL BE BACKED WITH FILTER CLOTH.

GUARDRAIL CONSTRUCTION SHALL CONFORM TO INDEX 400 OF THE FLORIDA DEPARTMENT OF TRANSPORTATION'S "DESIGN STANDARDS", 2010 EDITION AND SUPPLEMENTS THERETO.

ALL IRRIGATIONS SYSTEMS DAMAGED DURING CONSTRUCTION SHALL BE REPAIRED AT THE CONTRACTOR'S EXPENSE.

THE CONTRACTOR SHALL PLACE SOD OVER ALL DAMAGED OR IMPROVED AREAS AFFECTED BY THE WORK. THE SOD SHALL MATCH THE TYPE OF SURROUNDING GRASS TO THE GREATEST EXTENT POSSIBLE.

SIGNING AND MARKING

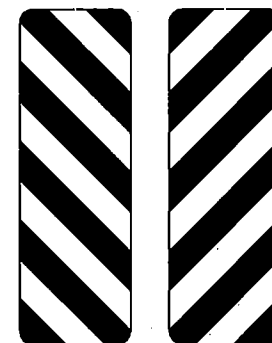
EXISTING SIGN REMOVALS:

- STA. 11+20, 14' RT WEIGHT LIMIT/OBJECT MARKER COMBO
- STA. 12+64, 16' LT WEIGHT LIMIT/OBJECT MARKER COMBO
- STA. 13+54, 12' LT INTERSECTION WARNING/SPEED LIMIT COMBO

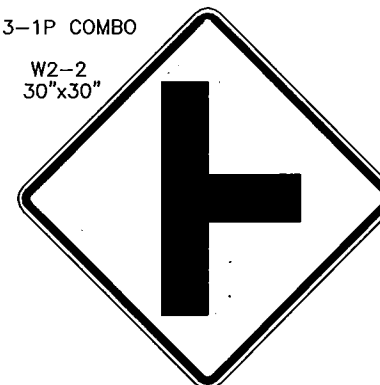
APPROXIMATE LOCATION: 125' WEST OF NW 35TH ST, 30 MPH SPEED LIMIT 15' NORTH OF Q RIVERVIEW BLVD.

PROPOSED SIGN INSTALLATION:

- STA. 9+85, 17' RT W13-1P
- STA. 10+80, 18' LT OM3-L
- STA. 10+80, 18' RT OM3-R
- STA. 12+69, 18' LT OM3-R
- STA. 12+69, 18' RT OM3-L
- STA. 13+65, 15' LT W2-2/W13-1P COMBO



OM3-L OM3-R



SIGNS SHALL BE INSTALLED IN ACCORDANCE TO THE MANUAL ON UNIFORM TRAFFIC CONTROL DEVICES (M.U.T.C.D.) 2009 AND THE FDOT STANDARD INDEX 17302.



PREPARED BY:



WADE TRIM

www.wadetrtrim.com
8745 Henderson Road, Suite 220
Tampa, FL 33634
813.882.8368 FAX 813.884.5990
Certificate of Authorization No. 3952

RIVERVIEW BOULEVARD BRIDGE OVER McLEWIS BAYOU
BRIDGE No. 134019
MANATEE COUNTY, FLORIDA

GENERAL NOTES

REVISION	BY	DATE

DESIGNED BY: ZNS 3/01
DRAWN BY: J. B. 7/09
CHECKED BY: J. B. 10/10

SEAL
No. 61064
STATE OF FLORIDA
PROFESSIONAL ENGINEER
ROBERT J. BROWN, No. 61064

12/10/11



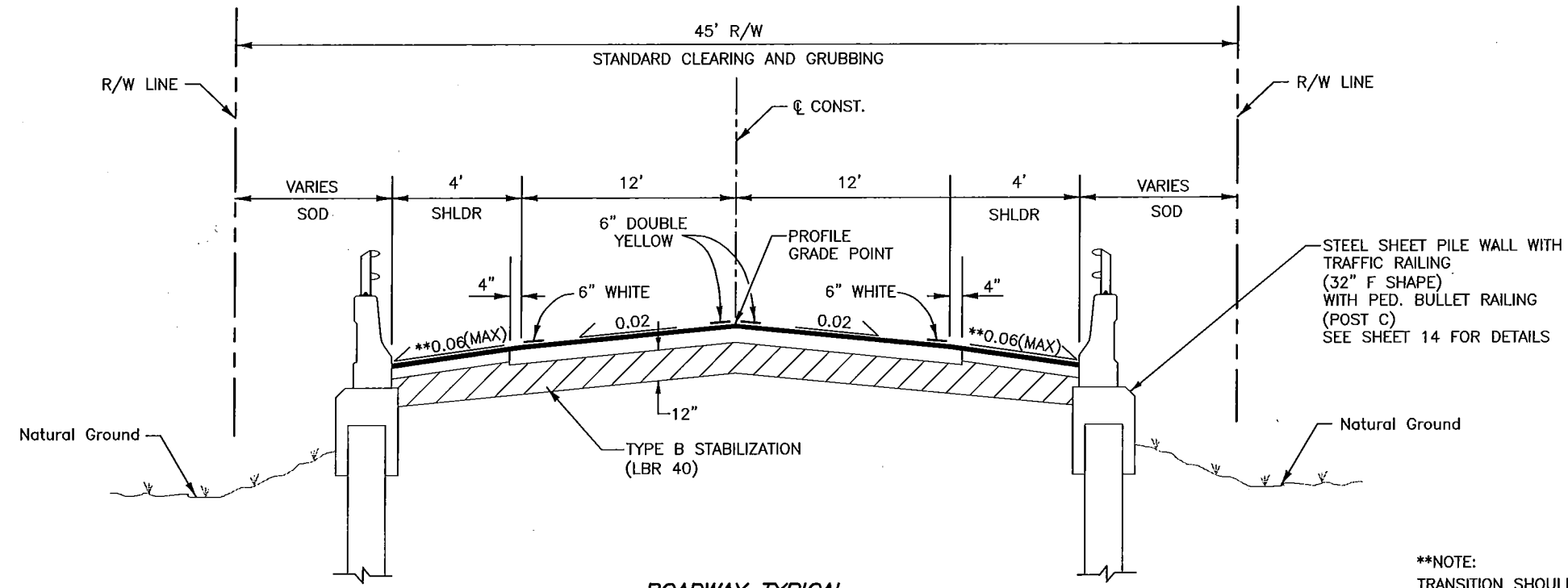
PREPARED BY:



WADE TRIM

www.wadetrtrim.com
 8745 Henderson Road, Suite 220
 Tampa, FL 33634
 813.882.8366 FAX 813.884.5990
 Certificate of Authorization No. 3952

RIVERVIEW BOULEVARD BRIDGE
 OVER MCLEWIS BAYOU
 BRIDGE No. 134019
 MANATEE COUNTY, FLORIDA
 ROADWAY TYPICAL SECTION



**ROADWAY TYPICAL
 RIVERVIEW BLVD.
 STA 9+95.00 TO STA 13+70.00**

NEW CONSTRUCTION

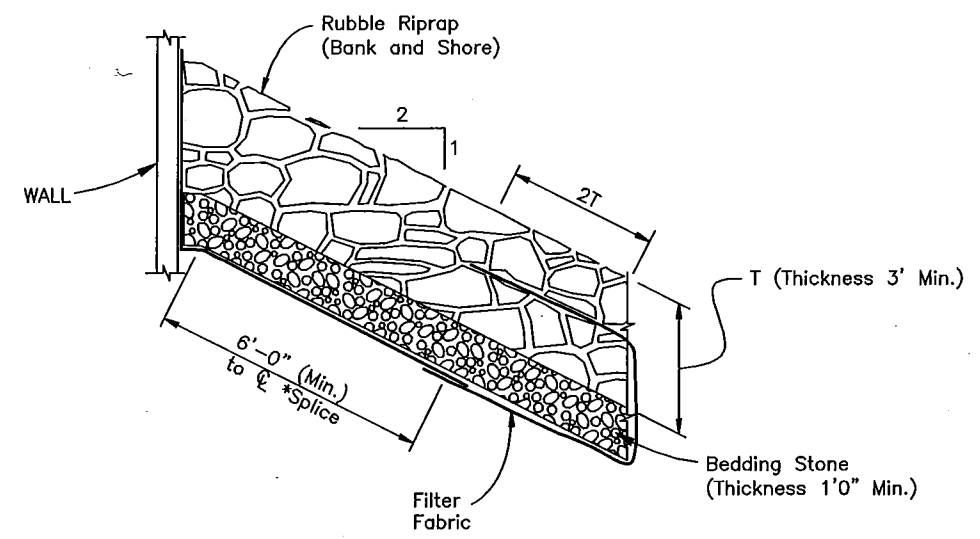
OPTIONAL BASE GROUP 6 WITH
 TYPE SP STRUCTURAL COURSE (TRAFFIC B) (2")

SHOULDER PAVEMENT

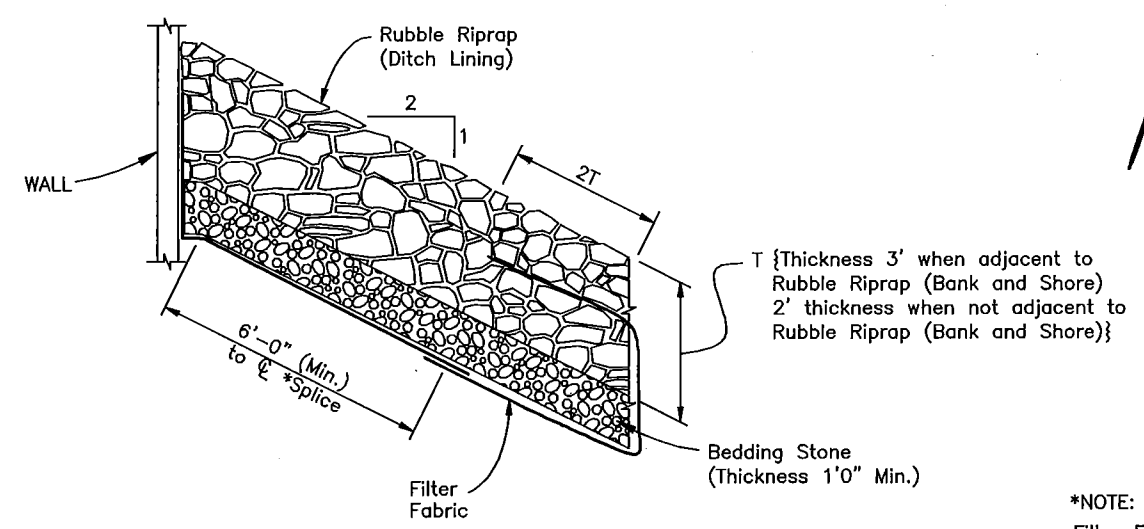
OPTIONAL BASE GROUP 1 WITH
 TYPE SP STRUCTURAL COURSE (TRAFFIC B) (2")

****NOTE:**
 TRANSITION SHOULDER CROSS SLOPES FROM
 6% (TYPICAL) TO 2% FOR CONNECTION AT
 APPROACH SLABS. TRANSITION LENGTH SHALL
 NOT BE LESS THAN 20 FEET.

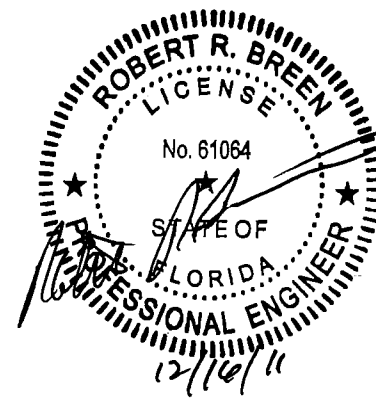
POSTED SPEED: 20 MPH
 DESIGN SPEED: 20 MPH



RIP RAP DETAIL (BANK AND SHORE)



RIP RAP DETAIL (DITCH LINING)



***NOTE:**
 Filter Fabric shall be Type D-2,
 see Design Standard Index 199.
 Splice length shall be 6" if bedding
 stone specified or 2'-0" if no
 bedding stone specified.

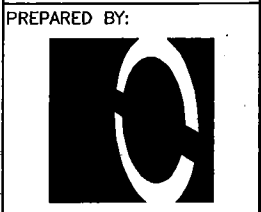
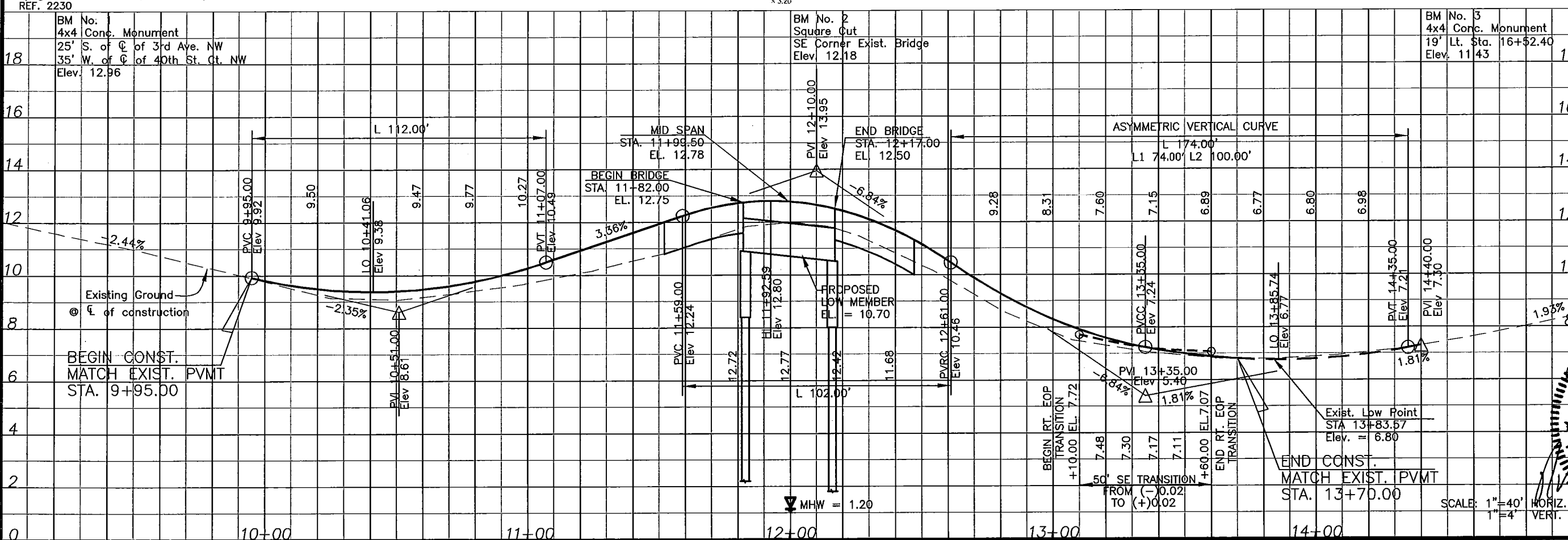
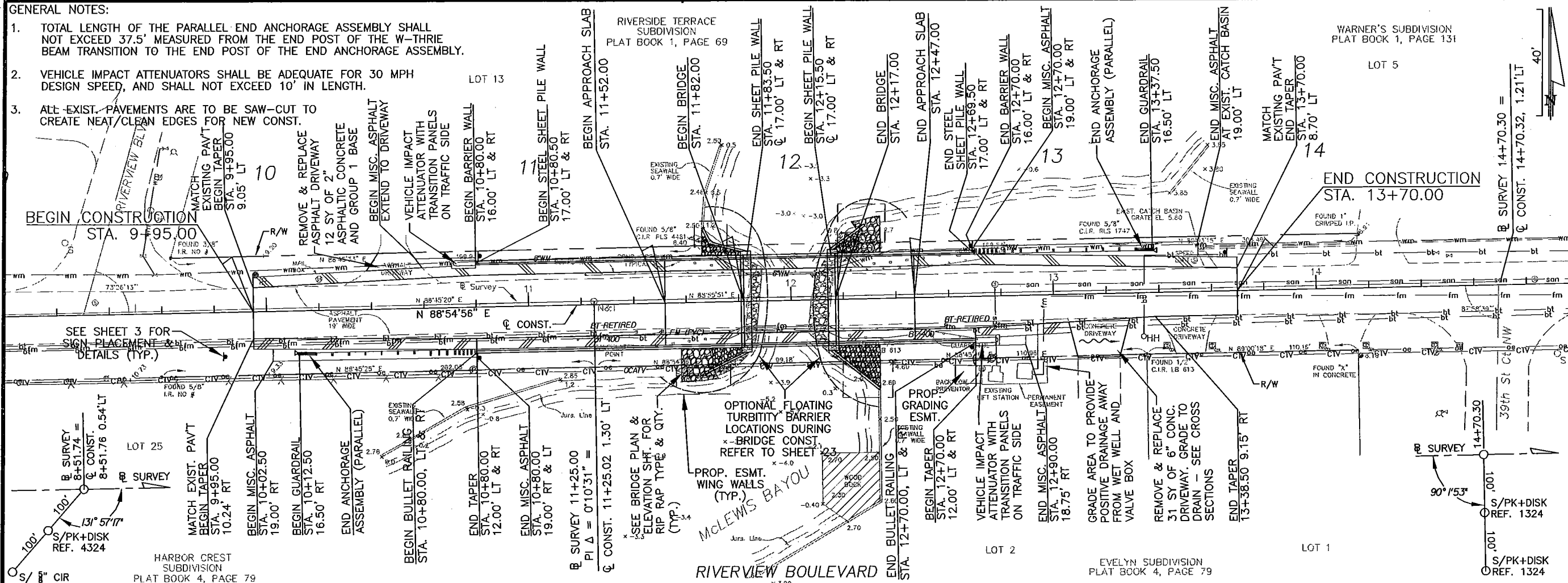
REVISION	BY	DATE
SURVEYED	ZNS	7/01
DESIGNED	RRB	7/09
DRAWN	JTK	9/10
CHECKED	LJL	10/10

SEAL

ROBERT R. BREEN, PE No.61064

GENERAL NOTES:

- TOTAL LENGTH OF THE PARALLEL END ANCHORAGE ASSEMBLY SHALL NOT EXCEED 37.5' MEASURED FROM THE END POST OF THE W-THREE BEAM TRANSITION TO THE END POST OF THE END ANCHORAGE ASSEMBLY.
- VEHICLE IMPACT ATTENUATORS SHALL BE ADEQUATE FOR 30 MPH DESIGN SPEED, AND SHALL NOT EXCEED 10' IN LENGTH.
- ALL EXIST. PAVEMENTS ARE TO BE SAW-CUT TO CREATE NEAT/CLEAN EDGES FOR NEW CONST.



WaDeTRIM
www.wadetrtrim.com
8745 Henderson Road, Suite 220
Tampa, FL 33634
813.882.8366 FAX 813.884.5990
Certificate of Authorization No. 3952

**RIVERVIEW BOULEVARD BRIDGE
OVER MCLEWIS BAYOU**
BRIDGE No. 134019
MANATEE COUNTY, FLORIDA

PLAN AND PROFILE

REVISION	DATE

DESIGNED BY: RRB
DATE: 7/09
SURVEYED BY: ZNS
DATE: 3/01
DRAWN BY: RRB
DATE: 7/10

ROBERT L. BRENN
LICENSED PROFESSIONAL ENGINEER
No. 61064
STATE OF FLORIDA
SHEET 5 OF 23



PREPARED BY:



WADE TRIM

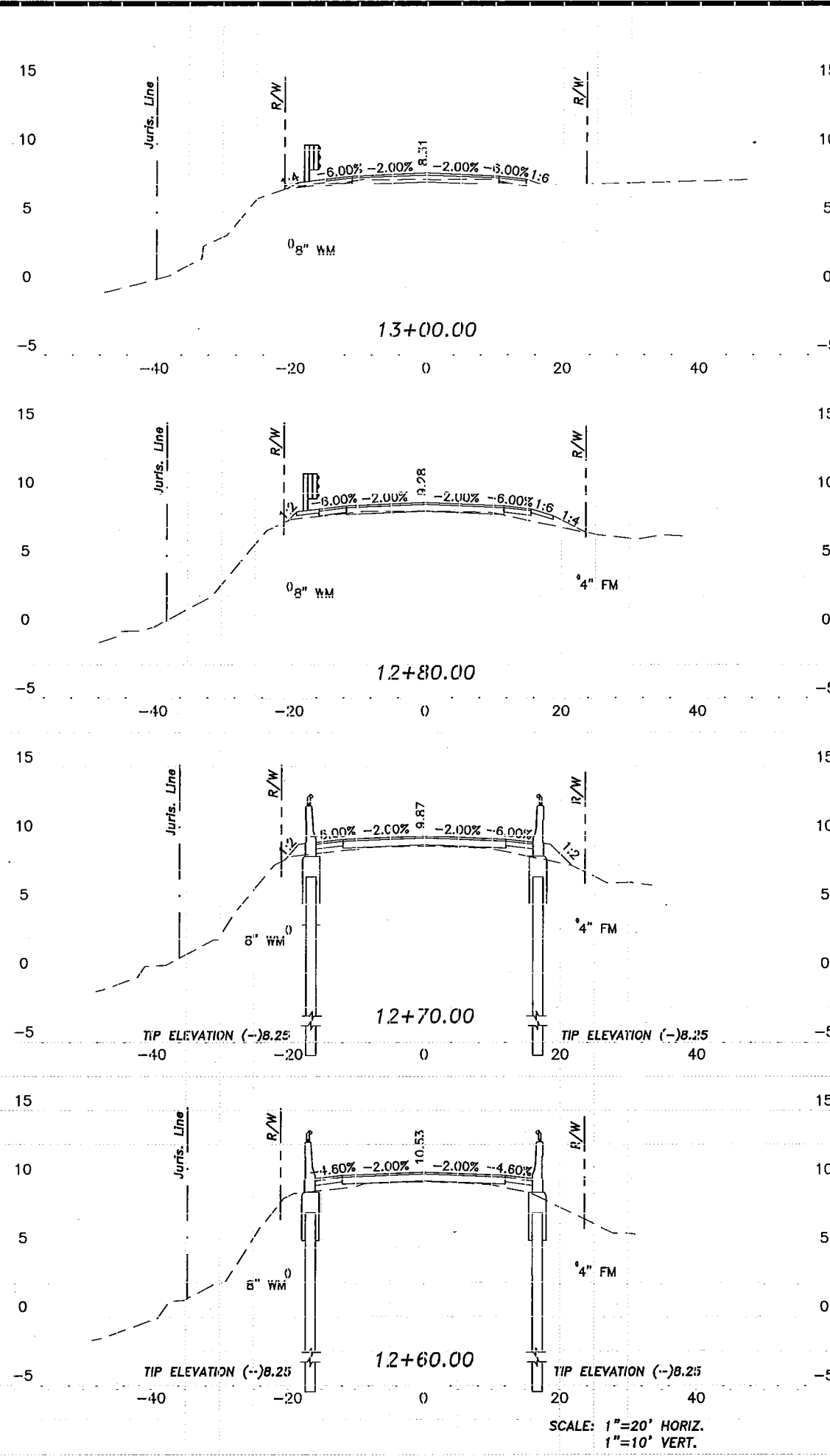
www.wadetrtrim.com
 8745 Henderson Road, Suite 220
 Tampa, FL 33634
 813.882.8366 FAX 813.884.5990
 Certificate of Authorization No. 3952

**RIVERVIEW BOULEVARD BRIDGE
 OVER MCLEWIS BAYOU**
 BRIDGE No. 134019
 MANATEE COUNTY, FLORIDA

CROSS SECTIONS

SUMMARY OF EARTHWORK		
DESCRIPTION	CY	
	P	F
TOTAL EXCAVATION	133.6	
TOTAL EMBANKMENT	63.5	

ROADWAY EXCAVATION		EMBANKMENT	
A	V	A	V
6.5		1.1	
3.2		2.7	
2.1		6.0	
2.3		3.0	
10.0		9.8	
3.6		2.8	
9.6		5.2	
6.8		1.8	

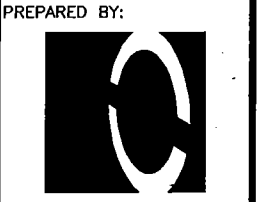
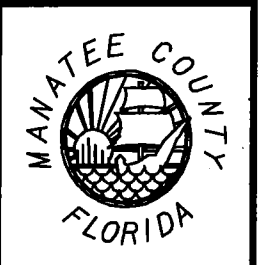
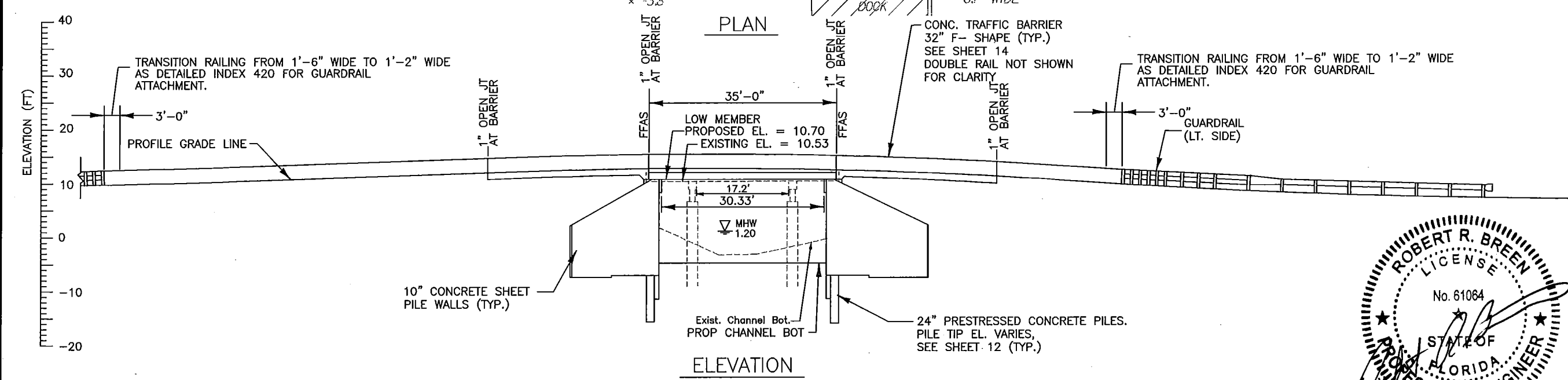
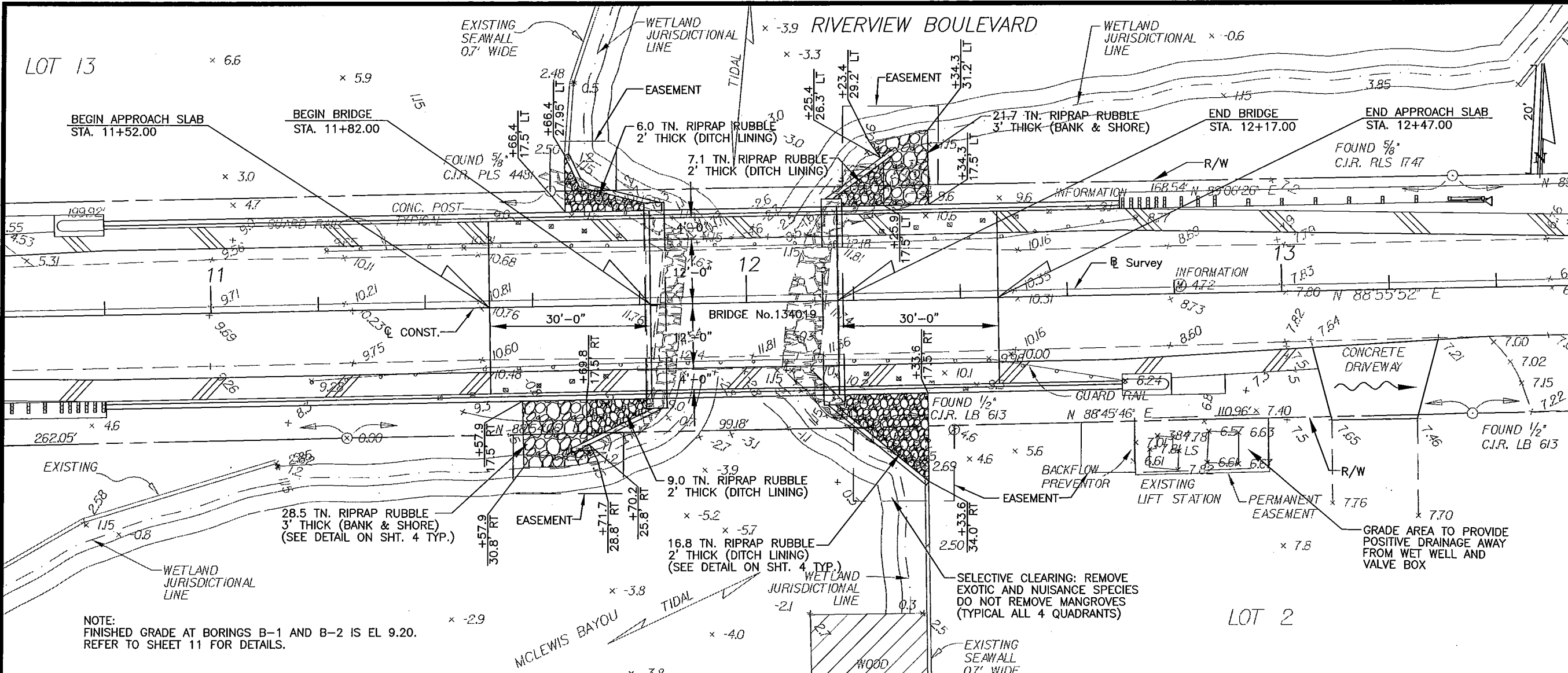


REVISION	DATE

SURVEYED: JNS 3/01
 DESIGNED: TRR 8/01
 DRAWN: AFS 8/01
 CHECKED: LJS 10/01
 SEAL No. 61064
 STATE OF FLORIDA
 PROFESSIONAL ENGINEER
 ROBERT R. BREEN, PE No. 61064
 SHEET 8 OF 23

SCALE: 1"=20' HORIZ.
 1"=10' VERT.

SCALE: 1"=20' HORIZ.
 1"=10' VERT.



PREPARED BY:
WADETRIM
 www.wadetrtrim.com
 8745 Henderson Road, Suite 220
 Tampa, FL 33634
 813.882.8388 FAX 813.884.5990
 Certificate of Authorization No. 3952

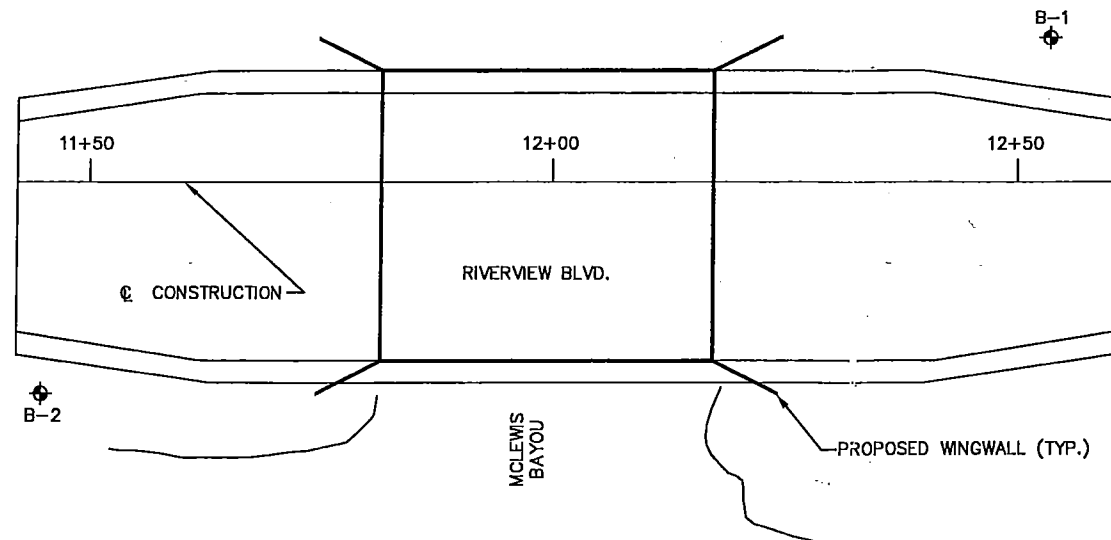
RIVERVIEW BOULEVARD BRIDGE OVER MCLEWIS BAYOU
 BRIDGE No. 134019
 MANATEE COUNTY, FLORIDA
BRIDGE PLAN AND ELEVATION

REVISION	BY	DATE
SURVEYED	ZNS	7/01
DESIGNED	RRB	9/10
DRAWN	JTK	10/10
CHECKED	LW	10/10



SEAL

ROBERT R. BREEN, PE No. 61064
 SHEET 10 OF 23



BORING LOCATION PLAN

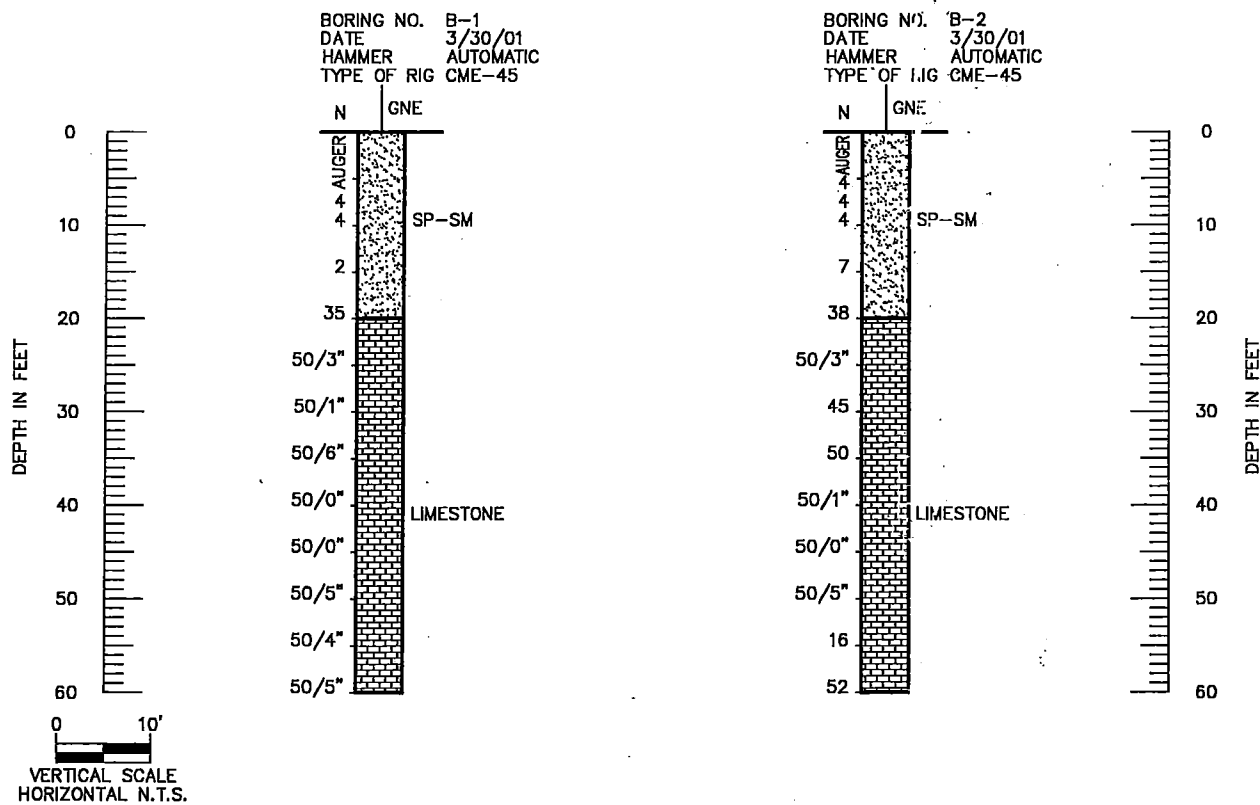


LEGEND

- (SP-SM), GRAY AND BROWN SLIGHTLY SILTY FINE SAND WITH SHELL INTERMIXED
- (LIMESTONE), GRAY INDURATED SILTY CLAY TO CLAYEY SILT, WEATHERED LIMESTONE

NOTES:

- ✦ WATER TABLE
 - N NUMBERS TO THE LEFT OF BORINGS INDICATE SPT VALUE FOR 12" PENETRATION. (UNLESS OTHERWISE NOTED.)
 - ⊕ APPROXIMATE SPT BORING LOCATION
- 50/6" FIFTY BLOWS FOR SIX INCHES



ENVIRONMENTAL CLASSIFICATION

SUBSTRUCTURE: MODERATELY AGGRESSIVE

SOIL

RESISTIVITY: 1600 OHMS-CM
 CHLORIDES: < 80 PPM
 SULFATES: < 288 PPM
 pH: 7.21

GRANULAR MATERIALS- RELATIVE DENSITY	SPT (BLOWS/FT.)
VERY LOOSE	LESS THAN 4
LOOSE	5-10
MEDIUM	11-30
DENSE	31-50
VERY DENSE	GREATER THAN 50
SILTS AND CLAYS CONSISTENCY	SPT (BLOWS/FT.)
VERY SOFT	LESS THAN 2
SOFT	3-4
FIRM	5-8
STIFF	9-15
VERY STIFF	16-30
HARD	GREATER THAN 30

REVISIONS					
Date	By	Description	Date	By	Description

PROFESSIONAL SERVICE INDUSTRIES, INC.
 5801 BENJAMIN CENTER DR., SUITE 112
 TAMPA, FL 33634
 (813)-886-1075

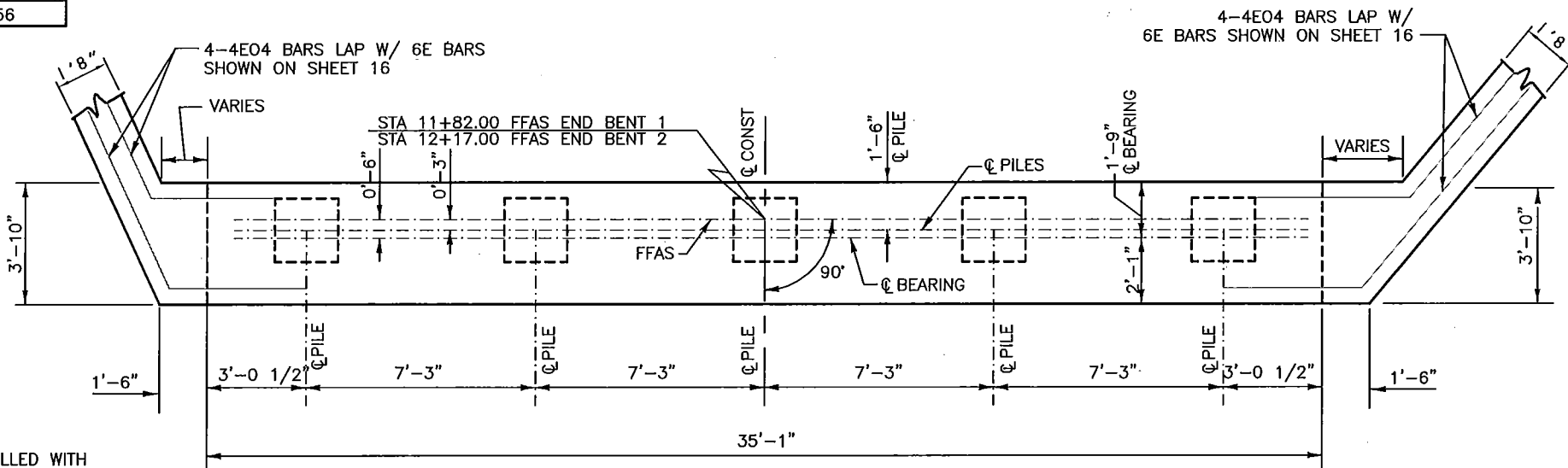
FLORIDA ENGINEERING CERTIFICATE OF AUTHORIZATION No. 3684

FLORIDA DEPARTMENT OF TRANSPORTATION
 STRUCTURES DESIGN OFFICE

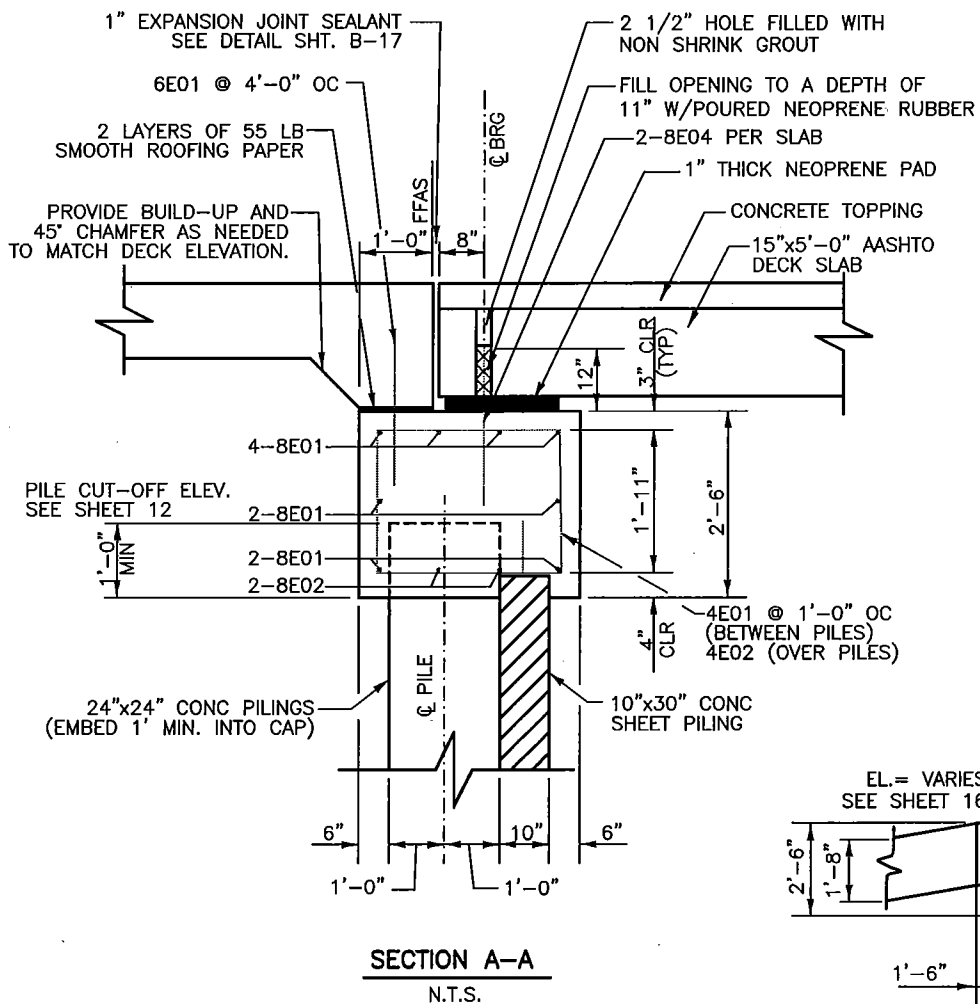
ROAD NO. COUNTY FINANCIAL PROJECT ID.
 - MANATEE -

SHEET TITLE: REPORT OF CORE BORINGS	SHEET NO. 11 OF 23
PROJECT NAME: RIVERVIEW BOULEVARD BRIDGE NO. 134019	

ESTIMATED QUANTITIES THIS SHEET		
ITEM	UNIT	QUANTITY
CLASS IV CONCRETE (SUBSTRUCTURE)	CY	35
REINFORCING STEEL (SUBSTRUCTURE)	LB	3356

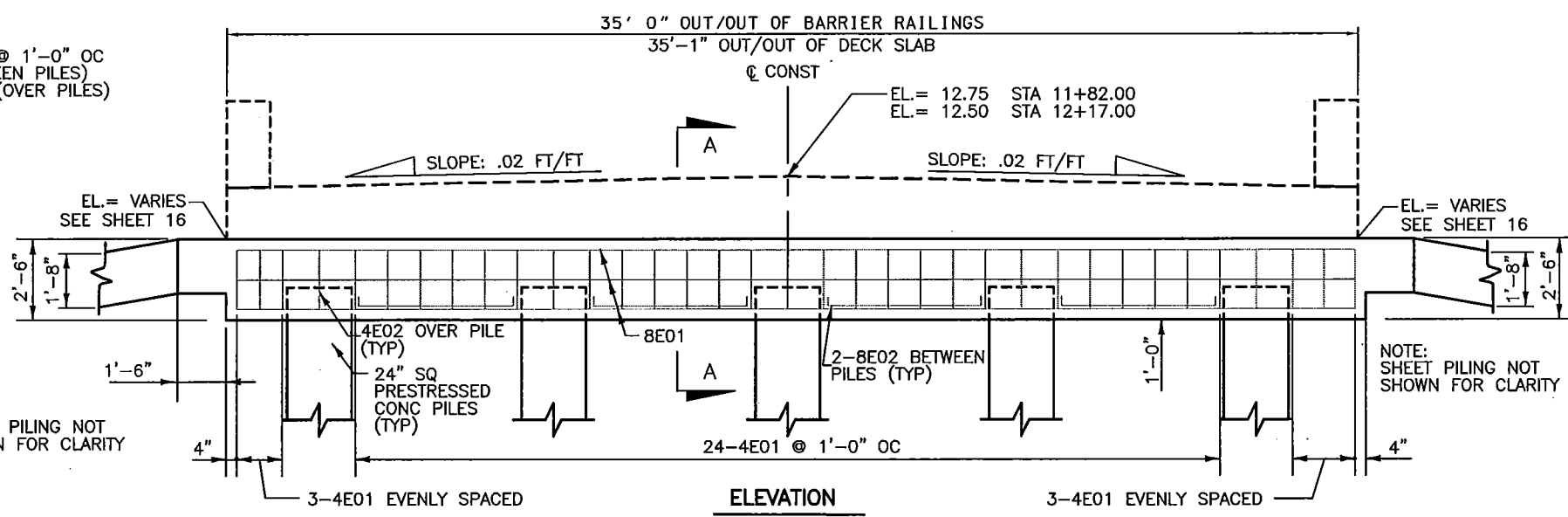


PLAN
SCALE: 1"=5'-0"



SECTION A-A
N.T.S.

NOTE: SHEET PILING NOT SHOWN FOR CLARITY



ELEVATION
SCALE: 1"=5'-0"

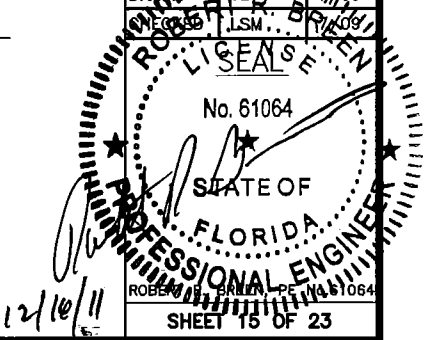
NOTE: SHEET PILING NOT SHOWN FOR CLARITY



PREPARED BY:
WADE TRIM
www.wadetrtrim.com
8745 Henderson Road, Suite 220
Tampa, FL 33834
813.882.6366 FAX 813.884.6990
Certificate of Authorization No. 3952

RIVERVIEW BOULEVARD BRIDGE OVER MCLEWIS BAYOU
BRIDGE No. 134019
MANATEE COUNTY, FLORIDA
END BENTS 1 & 2

REVISION	BY	DATE
SURVEYED	ZNS	7/01
DESIGNED	RFB	7/09
DRAWN	YLD	11/09
CHECKED	LSM	11/09





PREPARED BY:

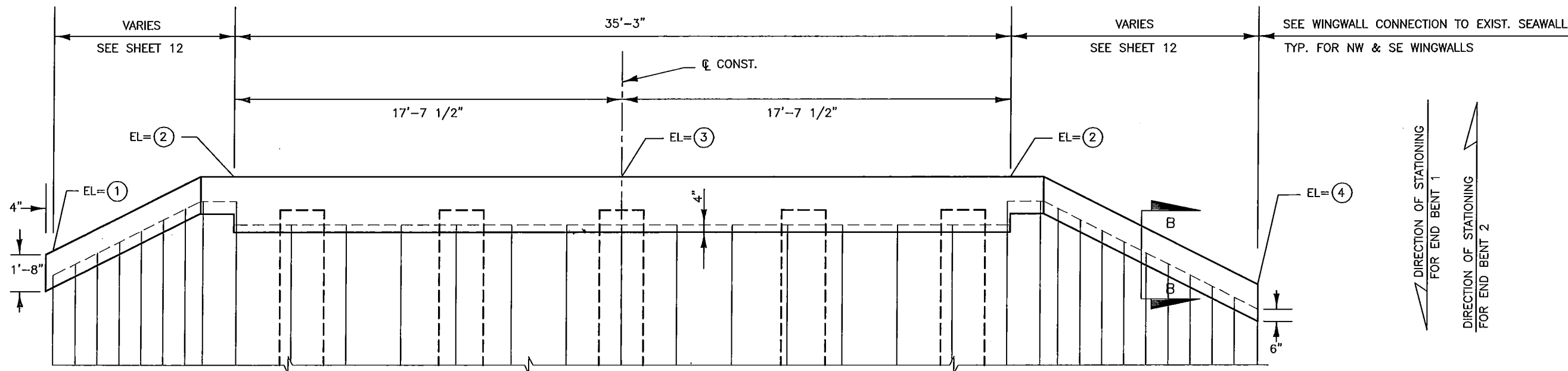


WADE TRIM

www.wadetrim.com
 8745 Henderson Road, Suite 220
 Tampa, FL 33634
 813.882.8366 FAX 813.884.6990
 Certificate of Authorization No. 3962

RIVERVIEW BOULEVARD BRIDGE
 OVER MCLEWIS BAYOU
 BRIDGE No. 134019
 MANATEE COUNTY, FLORIDA

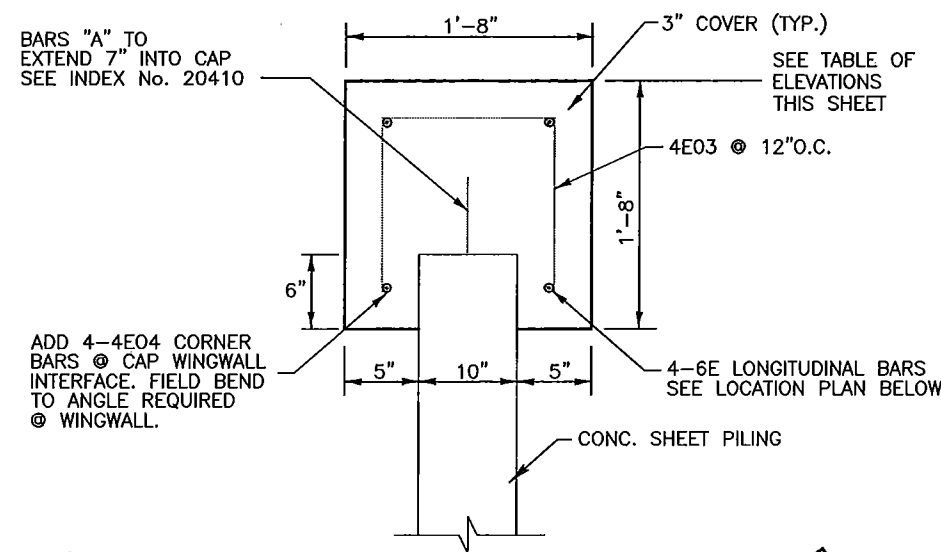
END BENTS DETAILS



END BENT ELEVATION

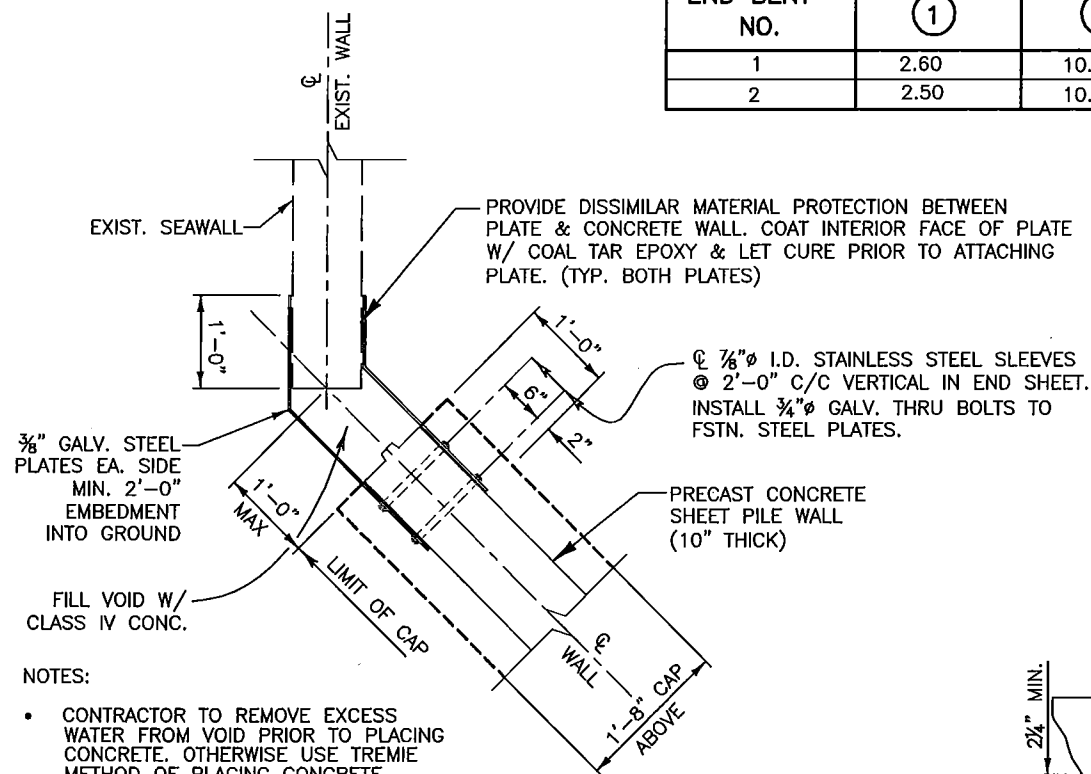
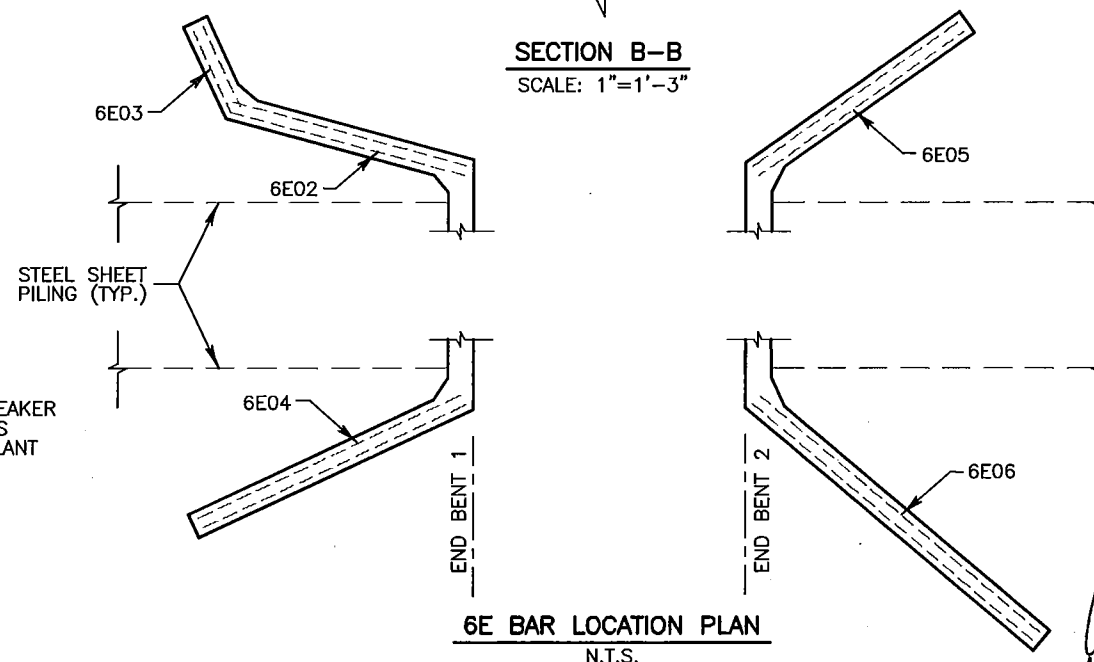
SCALE: 1"=5'-0"

TABLE OF ELEVATIONS				
END BENT NO.	①	②	③	④
1	2.60	10.90	10.90	2.50
2	2.50	10.62	10.62	2.69



SECTION B-B

SCALE: 1"=1'-3"



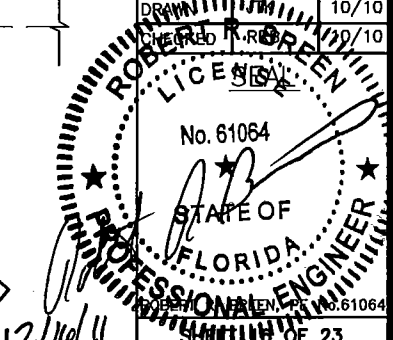
WINGWALL CONNECTION TO EXISTING SEAWALL

SCALE: 1"=2'-0"

EXPANSION JOINT DETAIL

N.T.S.

REVISION	BY	DATE
SURVEYED	ZNS	7/01
DESIGNED	RRB	7/09
DRAWN		10/10
CHECKED		10/10



12/16/11



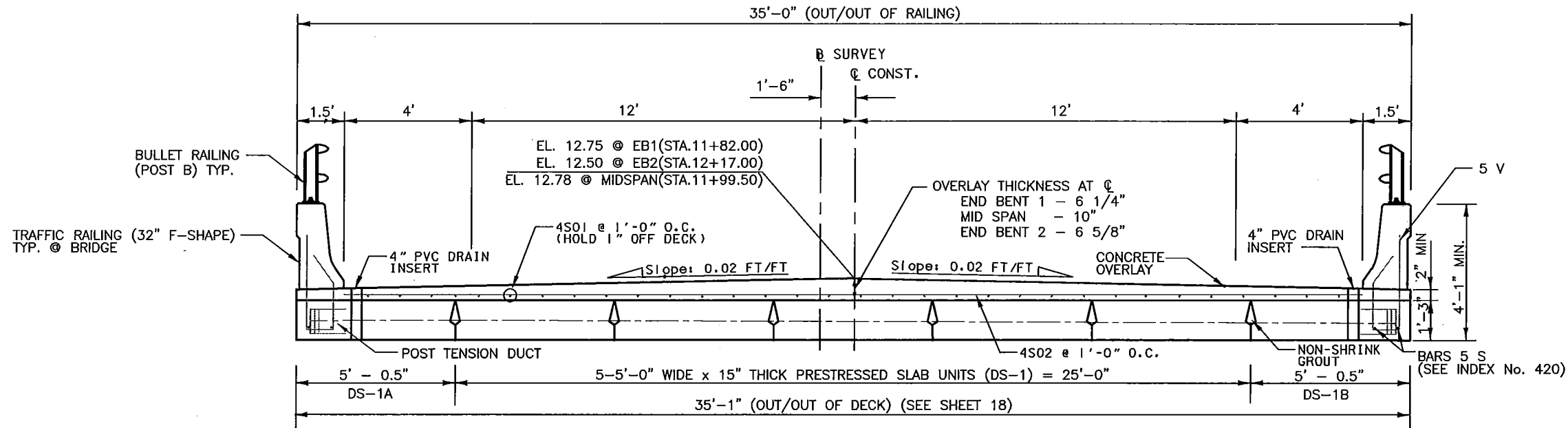
PREPARED BY:



WADE TRIM

www.wadetrtrim.com
 8745 Henderson Road, Suite 220
 Tampa, FL 33634
 813.882.8388 FAX 813.884.6990
 Certificate of Authorization No. 3962

RIVERVIEW BOULEVARD BRIDGE
 OVER MCLEWIS BAYOU
 BRIDGE No. 134019
 MANATEE COUNTY, FLORIDA
 SUPERSTRUCTURE
 TYPICAL SECTION

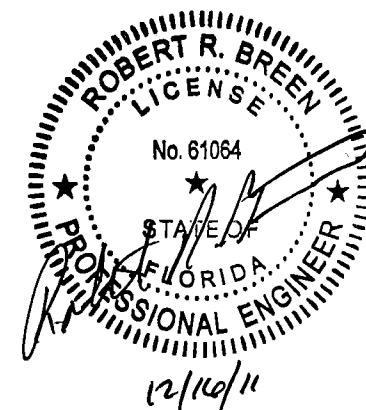


BRIDGE TYPICAL
 (LOOKING UP STATION)

ESTIMATED QUANTITIES THIS SHEET		
ITEM	UNIT	QUANTITY
CLASS IV CONCRETE (SUPERSTRUCTURE)	CY	25
REINFORCING STEEL (SUPERSTRUCTURE)	LB	1573
CONCRETE TRAFFIC RAILING (32" F-SHAPE)	LF	70
ALUMINUM BULLET RAILING -- DOUBLE RAIL	LF	70

SUPERSTRUCTURE NOTES:

1. A VARIABLE DEPTH CONCRETE OVERLAY SHALL BE PLACED ON TOP OF THE PRESTRESSED SLAB UNITS.
2. REFER TO STANDARD INDEX 420, SECTION A-A FOR TRAFFIC RAILING DETAILS BRIDGE. REFER TO INDEX 821 & 822 FOR BULLET RAILING DETAILS.



REVISION	BY	DATE
SURVEYED	ZNS	7/01
DESIGNED	RRB	7/09
DRAWN	YL	7/09
CHECKED	LSM	7/09

SEAL

ROBERT R. BREEN, PE No.61064



PREPARED BY:

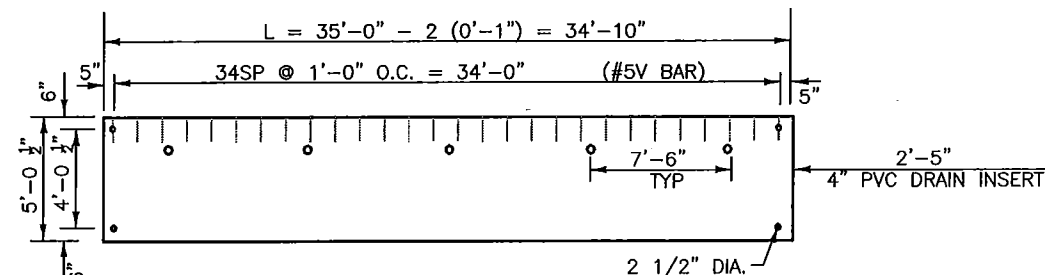


WADE TRIM

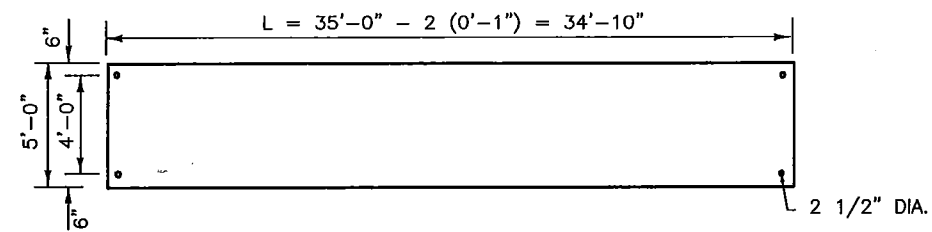
www.wadetrtrim.com
 8745 Henderson Road, Suite 220
 Tampa, FL 33634
 813.882.8366 FAX 813.884.5990
 Certificate of Authorization No. 3952

RIVERVIEW BOULEVARD BRIDGE
 OVER MCLEWIS BAYOU
 BRIDGE No. 134019
 MANATEE COUNTY, FLORIDA

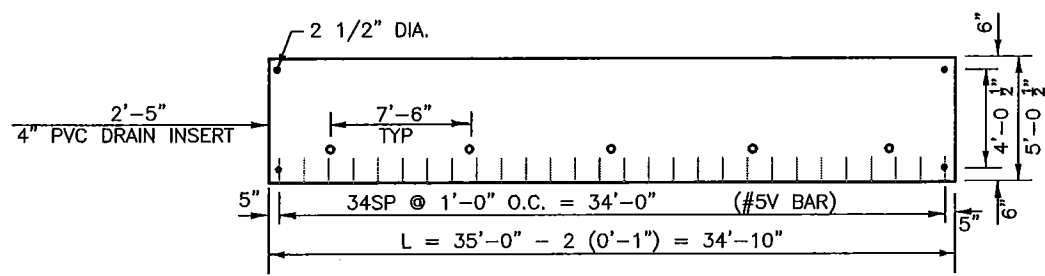
FRAMING PLAN



MK DS-1A (1) REQUIRED



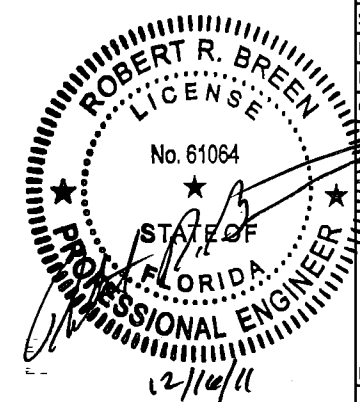
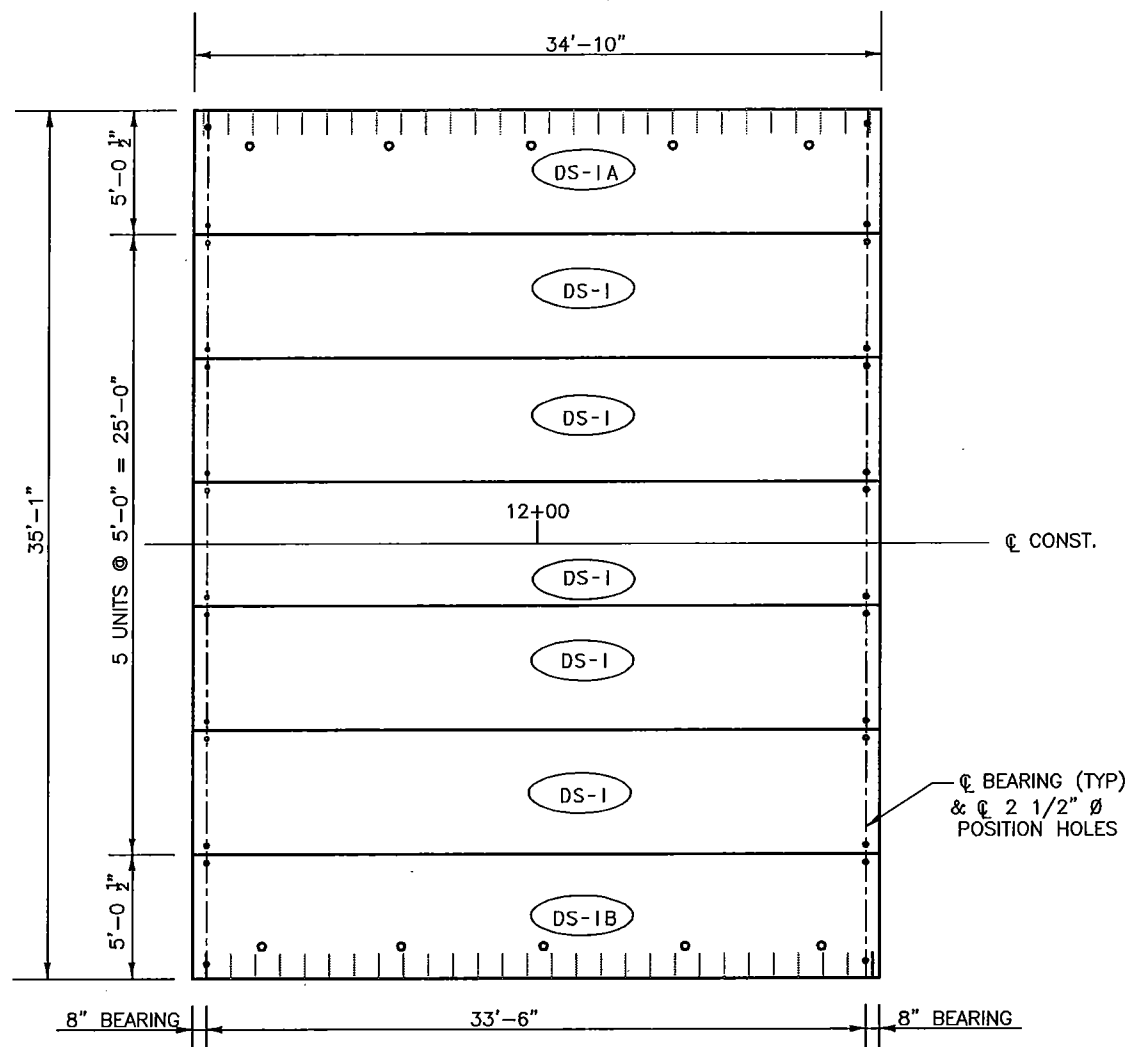
MK DS-1 (5) REQUIRED



MK DS-1B (1) REQUIRED

DECK SLAB NOTES:

1. DECK SLABS AND BEARING PADS SHALL BE DESIGNED BY THE CONTRACTOR FOR HL-93 LIVE LOAD, FUTURE WEARING SURFACE (15 LB/SF) AND ALL DEAD LOADS AS SHOWN IN THE PLANS.
2. CONTRACTOR SHALL PROVIDE SHOP DRAWINGS OF THE DECK SLAB UNITS AND POST-TENSIONED SYSTEM TO THE ENGINEER OF RECORD FOR APPROVAL.
3. CALCULATIONS FOR THE DESIGN OF THE DECK SLAB UNITS SHALL ALSO BE SUBMITTED TO THE ENGINEER OF RECORD FOR APPROVAL. THE CALCULATIONS SHALL BE SIGNED AND SEALED BY A LICENSED STRUCTURAL ENGINEER, WITH LICENSURE IN THE STATE OF FLORIDA. THE CALCULATIONS SHALL SHOW INITIAL AND FINAL STRESSES FOR ALL CONDITIONS. AS NOTED ELSEWHERE, THE DESIGN SHALL BE BASED ON DEAD LOAD PLUS HL-93 LIVE LOAD. IN ADDITION TO DESIGN CALCULATIONS, THE DECK SHALL BE LOAD RATED FOR BOTH INVENTORY AND OPERATING CONDITIONS. THE LOAD RATINGS SHALL MEET FDOT REQUIREMENTS, INCLUDING THE FL120 LOAD. RATING INFORMATION (INVENTORY & OPERATING) SHALL BE INCLUDED IN THE SIGNED & SEALED CALCULATION PACKAGE.
4. 5V BARS SHALL BE OF SUFFICIENT LENGTH TO ACCOMMODATE THE TOPPING.
5. THE COST OF (28) BEARING PADS, POURED NEOPRENE RUBBER AND 70 LF OF EXPANSION JOINT SEALANT SHALL BE INCLUDED IN THE UNIT PRICE FOR PRESTRESSED SLAB UNITS.
6. THE BEARING PADS SHALL BE 1" THICK AND HAVE A HARDNESS OF 50 DUROMETER. DIMENSIONS TO BE DETERMINED BY CONTRACTOR.



REVISION	BY	DATE
SURVEYED	ZNS	7/01
DESIGNED	RRB	7/09
DRAWN	YL	7/09
CHECKED	LSM	7/09

SEAL

ROBERT R. BREEN, PE No. 61064



PREPARED BY:



WADE TRIM

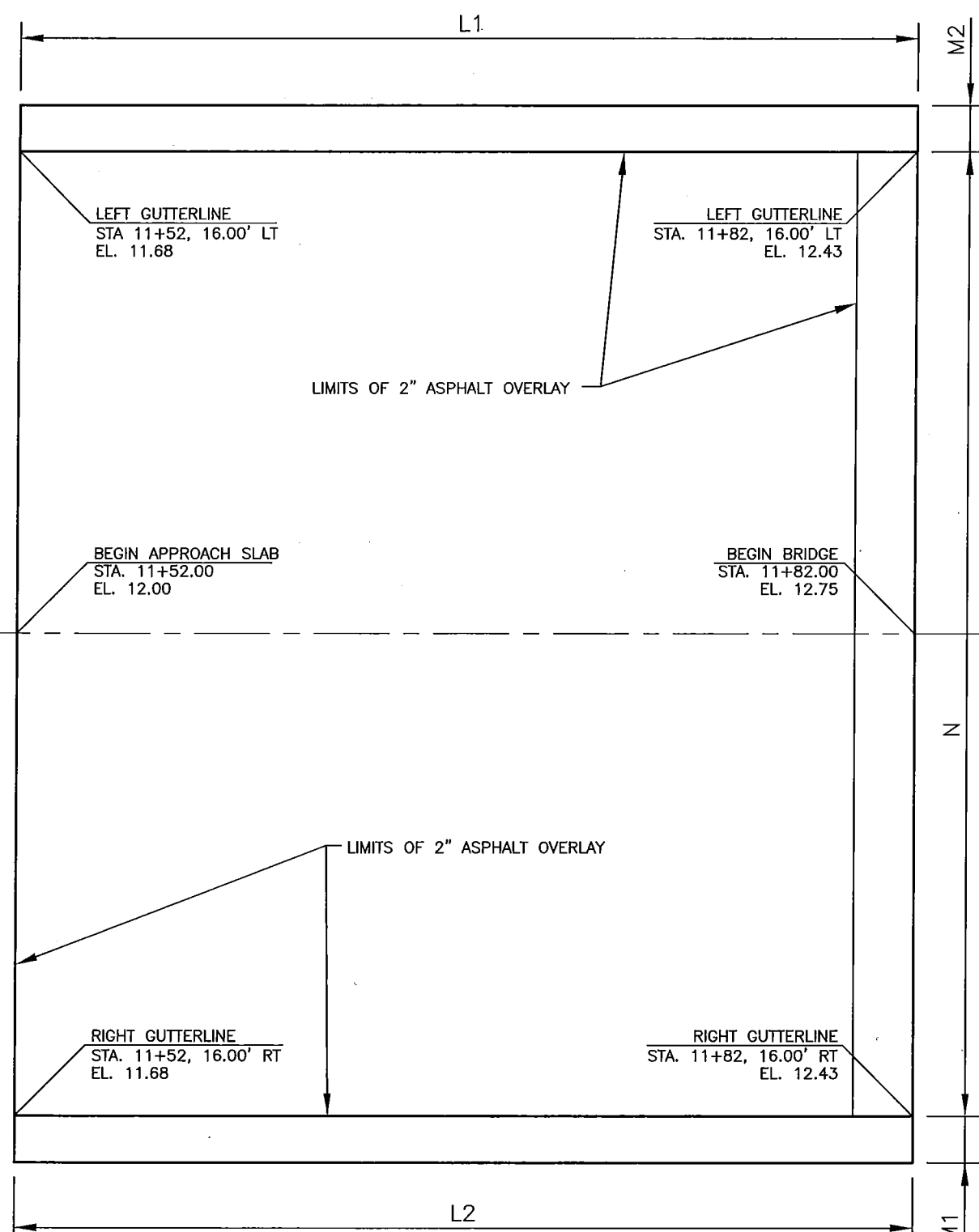
www.wadetrtrim.com
 8745 Henderson Road, Suite 220
 Tampa, FL 33634
 813.882.8366 FAX 813.884.6990
 Certificate of Authorization No. 3952

RIVERVIEW BOULEVARD BRIDGE
 OVER MCLEWIS BAYOU
 BRIDGE No. 134019
 MANATEE COUNTY, FLORIDA

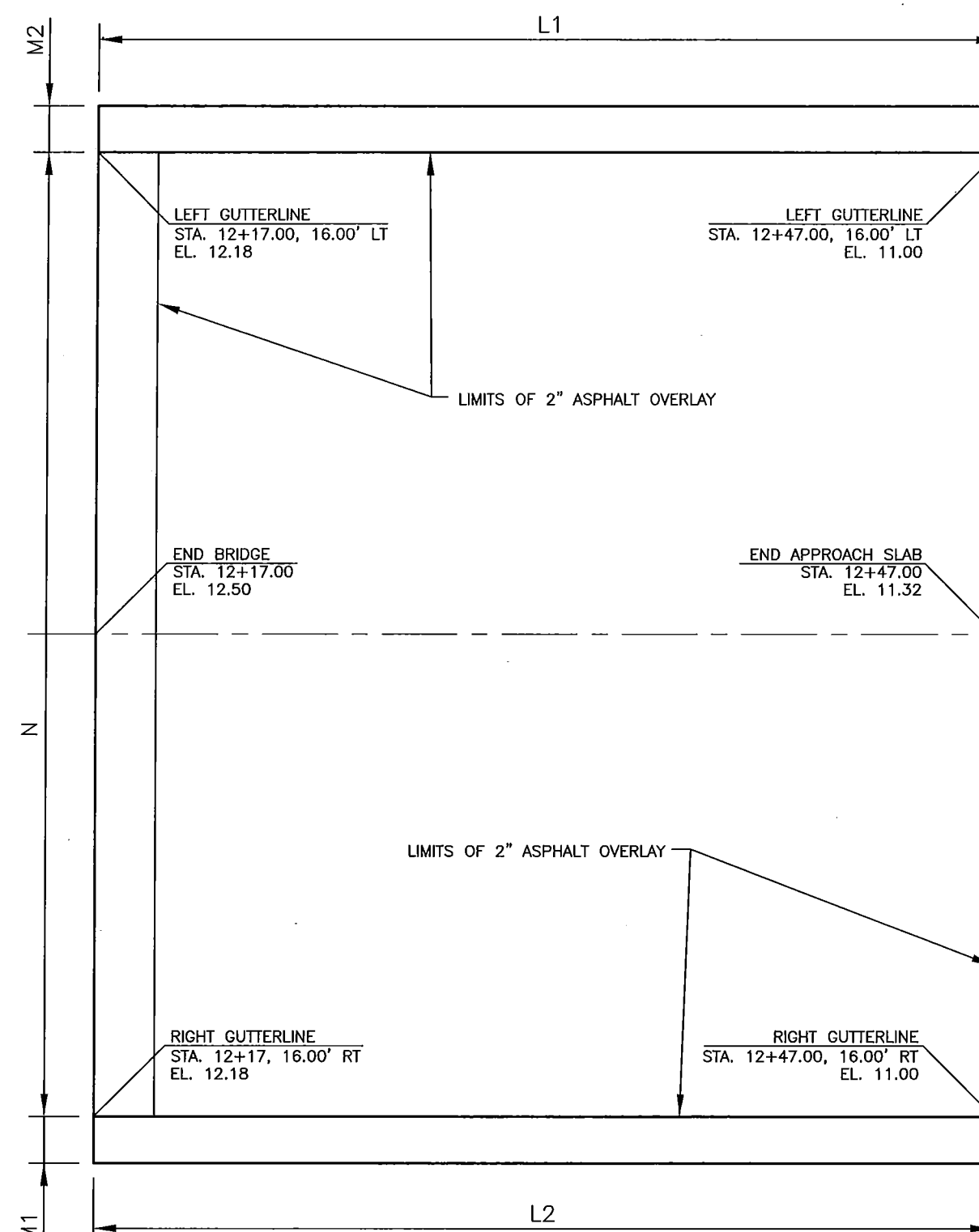
APPROACH SLAB DETAILS

REVISION	BY	DATE
SURVEYED	ZNS	7/01
DESIGNED	RRB	8/10
DRAWN	RRB	8/10

LICENSED PROFESSIONAL ENGINEER
 No. 61084
 STATE OF FLORIDA
 ROBERT R. BRUBAKER
 12/14/11
 SHEET 19 OF 23



APPROACH SLAB 1
 SCALE: 1"=5'-0"



APPROACH SLAB 2
 SCALE: 1"=5'-0"

LOCATION	DIMENSIONS					ANGLE
	L1	L2	M1	M2	N	
STA 11+52.00 TO STA. 11+82.00	30'-0"	30'-0"	1'-6 1/2"	1'-6 1/2"	32'-0"	0
STA 12+17.00 TO STA. 12+47.00	30'-0"	30'-0"	1'-6 1/2"	1'-6 1/2"	32'-0"	0

LOCATION	REINFORCING STEEL (LBS)	CLASS II CONCRETE (CYD)
STA 11+52.00 TO STA. 11+82.00	7809	41
STA 12+17.00 TO STA. 12+47.00	7809	41

NOTE: REFER TO FDOT STANDARD INDEX 20900 FOR REINFORCING STEEL LAYOUT

END BENT 1

M A R K		LENGTH		NO	TYP	STY	B			C			D			E			F			H			J	K	N	O
SIZE	DESCR	FT	IN	BARS	BAR	A	G	FT	IN	FR	FT	IN	FR	FT	IN	FR	FT	IN	FR	FT	IN	FR	FT	IN	FR	NO	ANG	
4	4E01	11	3	30	4	4.5		1	11		3	4																
4	4E02	7	2	5	11			3	4		1	11		1	11													
4	4E03	5	0	50	5			1	8		1	8		0														
4	4E04	4	0	12	12			2	0		2	0														*		
6	6E01	2	0	10	1			2	0																			
6	6E02	17	0	4	1			17	0																			
6	6E03	10	9	4	1			10	9																			
6	6E04	18	3	4	1			18	3																			
8	8E01	34	7	8	1			34	7																			
8	8E02	7	0	8	11			5	0		1	0		1	0													
8	8E04	2	0	14	1			2	0																			

* Bend 8 at 65 Degrees and 4 at 75 Degrees

END BENT 2

M A R K		LENGTH		NO	TYP	STY	B			C			D			E			F			H			J	K	N	O
SIZE	DESCR	FT	IN	BARS	BAR	A	G	FT	IN	FR	FT	IN	FR	FT	IN	FR	FT	IN	FR	FT	IN	FR	FT	IN	FR	NO	ANG	
4	4E01	11	3	30	4	4.5		1	11		3	4																
4	4E02	7	2	5	11			3	4		1	11		1	11													
4	4E03	5	0	42	5			1	8		1	8		0														
4	4E04	4	0	8	12			2	0		2	0														*		
6	6E01	2	0	9	1			2	0																			
6	6E05	15	9	4	1			15	9																			
6	6E06	23	3	4	1			23	3																			
8	8E01	34	7	8	1			34	7																			
8	8E02	7	1	8	11			5	1		1	0		1	0													
8	8E04	2	0	14	1			2	0																			

* Bend 4 at 40 Degrees and 4 at 45 Degrees

SUPERSTRUCTURE

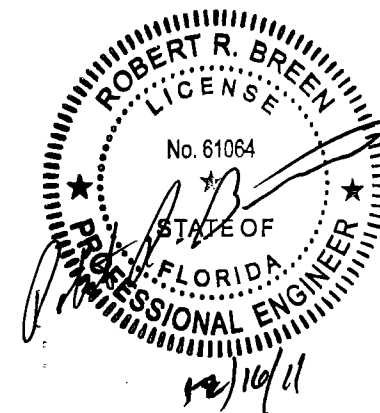
M A R K		LENGTH		NO	TYP	STY	B			C			D			E			F			H			J	K	N	O
SIZE	DESCR	FT	IN	BARS	BAR	A	G	FT	IN	FR	FT	IN	FR	FT	IN	FR	FT	IN	FR	FT	IN	FR	FT	IN	FR	NO	ANG	
4	4S01	34	4	33	1			34	4																			
4	4S02	32	0	35	1			32	0																			

APPROACH SLABS (REFER TO FDOT STANDARD INDEX 20900 FOR BAR LOCATIONS)

M A R K		LENGTH		NO	TYP	STY	B			C			D			E			F			H			J	K	N	O
SIZE	DESCR	FT	IN	BARS	BAR	A	G	FT	IN	FR	FT	IN	FR	FT	IN	FR	FT	IN	FR	FT	IN	FR	FT	IN	FR	NO	ANG	
5	5A1	29	6	72	1			29	6																			
5	5B	34	7	144	1			34	7																			
5	5C	5	0	124	1			5	0																			
8	8A2	29	6	96	1			29	6																			

RETAINING WALLS

M A R K		LENGTH		NO	TYP	STY	B			C			D			E			F			H			J	K	N	O
SIZE	DESCR	FT	IN	BARS	BAR	A	G	FT	IN	FR	FT	IN	FR	FT	IN	FR	FT	IN	FR	FT	IN	FR	FT	IN	FR	NO	ANG	
5	5R01	76	0	12	2			3	0		73	0																
5	5R02	29	6	40	1			29	6																			
5	5R03	23	6	20	1			23	6																			
5	5R04	4	6	310	10			3	0		1	6																
5	5R05	4	11	310	27			0			0	5 1/2		2	6		0	5 1/2		1	6		0		0			
5	5R06	8	6	310	1			8	0																			
5	5R07	4	7	280	11			0	7		2	0		2	0													
7	7R01	76	0	6	2			3	0		73	0																
7	7R02	29	6	12	1			29	6																			
7	7R03	23	6	6	1			23	6																			



Notes: All Steel this sheet shall be Grade 60.

Refer to FDOT Standard Index 21300 for Standard Bar Bending Details



PREPARED BY:



WADETRIM

www.wadetrtrim.com
 8745 Henderson Road, Suite 220
 Tampa, FL 33634
 813.882.8388 FAX 813.884.5990
 Certificate of Authorization No. 3962

RIVERVIEW BOULEVARD BRIDGE
 OVER MCLEWIS BAYOU
 BRIDGE No. 134019
 MANATEE COUNTY, FLORIDA

REINFORCING BAR LIST

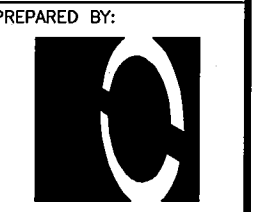
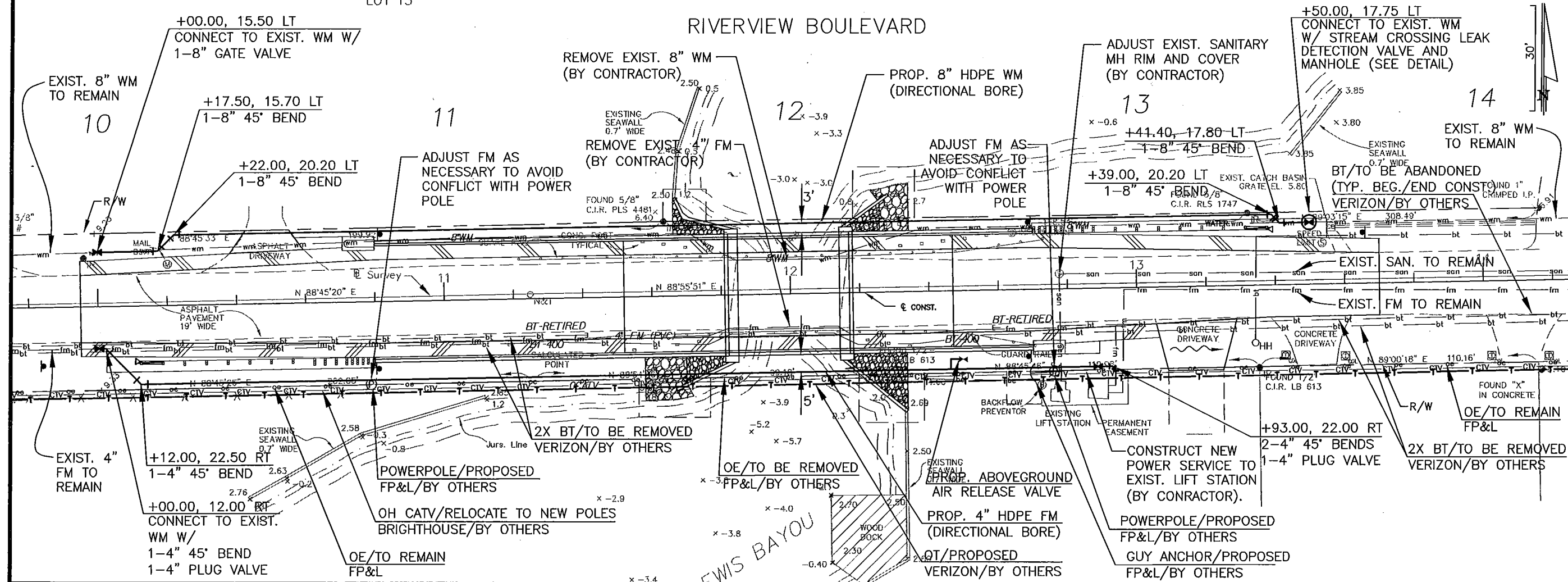
REVISION	BY	DATE
SURVEYED	ZNS	07/01
DESIGNED	RRB	08/10
DRAWN	AE	09/10
CHECKED	RRB	10/10

SEAL

ROBERT R. BREEN, PE No.61064

LOT 13

RIVERVIEW BOULEVARD



www.wadetrtrim.com
 8745 Henderson Road, Suite 220
 Tampa, FL 33634
 813.882.8368 FAX 813.884.6990
 Certificate of Authorization No. 3952

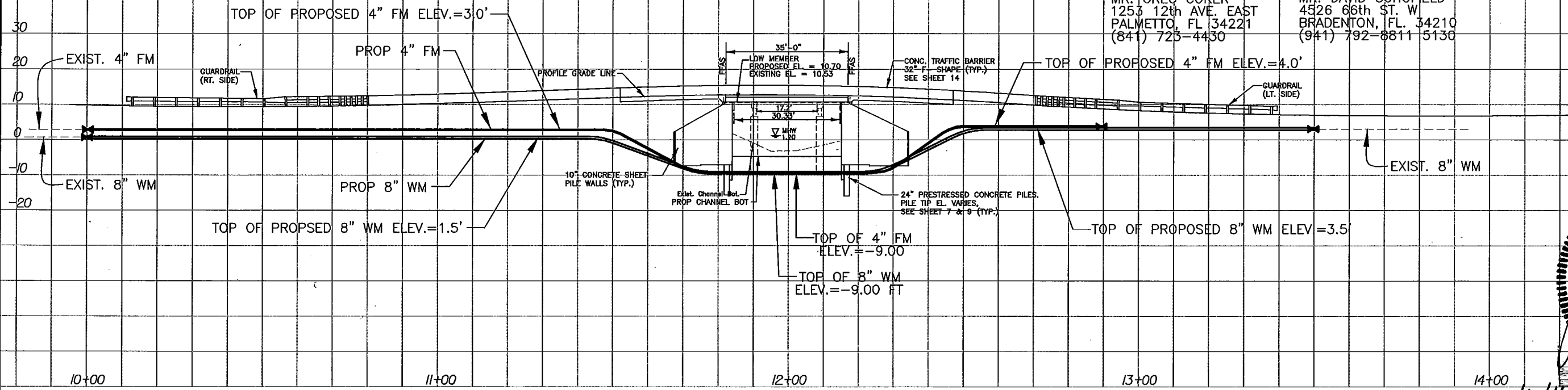
RIVERVIEW BOULEVARD BRIDGE OVER MCLEWIS BAYOU
 BRIDGE No. 134019
 MANATEE COUNTY, FLORIDA
 WATERMAIN & FORCEMAIN RELOCATIONS AND UTILITY ADJUSTMENTS

CONTRACTOR NOTES:

- ALL DIRECTIONAL BORES SHALL BE DONE AFTER ALL SHEETING INSTALLATIONS.
- ALL POTABLE WATER MAIN AND SANITARY SANITARY FORCEMAIN CONSTRUCTION AND REMOVAL WILL BE PERFORMED BY THE CONTRACTOR.

UTILITY OWNERS:

- | | | |
|--|--|--|
| BRIGHTHOUSE NETWORKS
MR. TOM WRIGHT
5413 SR 64 EAST
BRADENTON, FL. 34208
(941) 748-3816 | CITY OF BRADENTON
MR. ARLAN CUMMINGS
1411 9th ST. W
BRADENTON, FL. 34205
(941) 703-6300 | VERIZON FLORIDA INC.
MS. DENISE HUTTON
1701 RINGLING BLVD MC FLSS 4113
TAMPA, FL. 33619
(941) 906-6722 |
| FLORIDA POWER & LIGHT
MR. GREG COKER
1253 12th AVE. EAST
PALMETTO, FL 34221
(841) 725-4430 | MANATEE COUNTY UTILITY OPERATIONS
MR. DAVID SCHOFIELD
4526 66th ST. W
BRADENTON, FL. 34210
(941) 792-8811 5130 | |

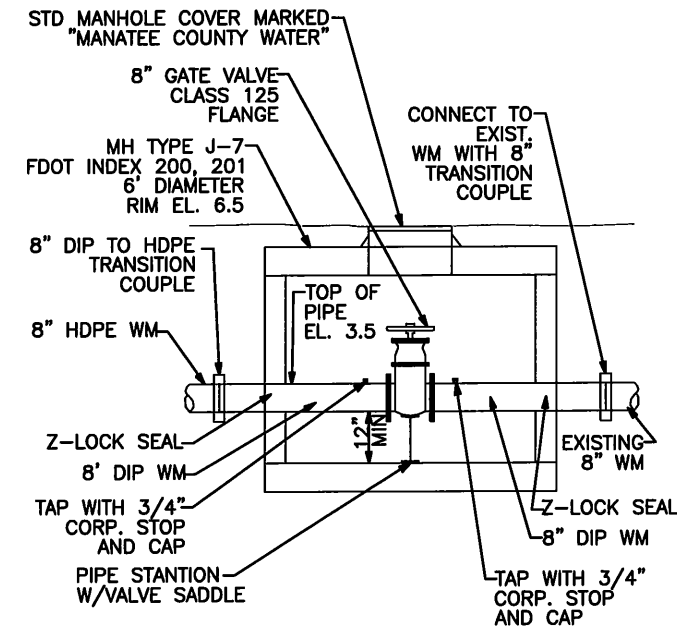


REVISION	DATE

SEAL
 No. 61064
 STATE OF FLORIDA
 PROFESSIONAL ENGINEER
 ROBERT R. BREA
 No. 61064

UTILITY WORK

1. THE CONTRACTOR SHALL SEQUENCE THE UTILITY WORK TO MINIMIZE INTERRUPTIONS AND INCONVENIENCE TO UTILITY CUSTOMERS. ALL SERVICE INTERRUPTIONS SHALL BE COORDINATED WITH AND APPROVED BY THE UTILITY OWNER AT LEAST 72 HOURS PRIOR TO SERVICE INTERRUPTION.
2. FORCEMAIN REPLACEMENT SHALL BE SEQUENCED IN SUCH A MANNER THAT THE LIFT STATION IS NOT SHUT DOWN FOR MORE THAN 2 HOURS.
3. THE WATERMAIN IS PART OF A LOOPED SYSTEM AND CAN BE TAKEN OUT OF SERVICE FOR A LONGER PERIOD OF TIME THAN THE FORCEMAIN. THE CONTRACTOR SHALL PROVIDE TEMPORARY WATER SERVICES AS NECESSARY TO ALL UTILITY CUSTOMERS WHOSE SERVICE WILL BE AFFECTED BY CONSTRUCTION ACTIVITIES. NEW WATER SERVICES SHALL BE PROVIDED AND CONNECTED FROM THE PROPOSED 8" WATER MAIN FOR ALL WATER CUSTOMERS THAT ARE SERVED FROM THE EXISTING LINE.
4. THE CONTRACTOR SHALL REMOVE APPROX. 354 L.F. OF EXISTING 8" WM AND INSTALL SUBAQUEOUS, 368 LF OF 8" HDPE DR-11 CLASS 160 PIPE. THE PRICE FOR INSTALLATION INCLUDES FITTINGS, RESTORATION, TESTING, DEWATERING, EXCAVATION INCLUDING ROCK AND ANY WORK INFERRED OR SPECIFICALLY CALLED FOR IN THE DRAWINGS, SPECIFICATIONS OR OTHER CONTRACT DOCUMENTS.
5. THE CONTRACTOR SHALL REMOVE APPROX. 305 L.F. OF EXISTING 4" FM AND INSTALL SUBAQUEOUS, 325 LF OF 4" HDPE DR-11 CLASS 160 PIPE. THE PRICE FOR INSTALLATION INCLUDES FITTINGS, RESTORATION, TESTING, DEWATERING, EXCAVATION INCLUDING ROCK AND ANY WORK INFERRED OR SPECIFICALLY CALLED FOR IN THE DRAWINGS, SPECIFICATIONS OR OTHER CONTRACT DOCUMENTS.
6. PIPE SHALL BE GREEN FOR FM AND BLUE FOR POTABLE WATER.
7. EXPOSED D.I.P. SHALL BE GIVEN TWO COATS OF FACTORY APPLIED EPOXY FOR A TOTAL DFM OF 11 MILS. GREEN FOR FM AND BLUE FOR POTABLE WATER.
8. PRIOR TO ORDERING MATERIALS, THE CONTRACTOR SHALL SUBMIT SHOP DRAWINGS OF ALL MATERIALS FOR APPROVAL.
9. ALL WORK MUST MEET OR EXCEED CURRENT MANATEE COUNTY STANDARDS.
10. RECORD DRAWINGS SHALL BE SIGNED AND SEALED BY A FLORIDA LICENSED SURVEYOR AND MAPPER.
11. ALL REQUIRED TESTING OF THE 8" WM AND 4" FM SHALL BE COMPLETED PRIOR TO CUT-IN. ALL TEMPORARY PLUGS AND FITTINGS REQUIRED FOR TESTING SHALL BE INCLUDED IN THE UNIT PRICE OF THE PIPE.
12. THE COST OF ADJUSTING MANHOLE LIDS AND VALVE COVERS SHALL BE INCIDENTAL TO THE WORK.
13. THE CONTRACTOR SHALL COORDINATE WITH VERIZON IN THE EVENT THEY HAVE NOT RELOCATED PRIOR TO DEMOLITION ACTIVITIES TO ENSURE VERIZON SERVICES WILL NOT BE INTERRUPTED. VERIZON IS CURRENTLY ATTACHED TO THE EXISTING BRIDGE STRUCTURE.
14. THE CONTRACTOR SHALL REFER TO MANATEE COUNTY PUBLIC WORKS UTILITY STANDARDS DATED MARCH 2009 FOR ADDITIONAL DETAILS AND GUIDANCE IN CONSTRUCTING PROPOSED UTILITIES. SPECIFICALLY SHEETS UG-5 (DIRECTIONAL BORE SUBAQUEOUS CROSSINGS), UG-11 (TRENCH WITH UNIMPROVED SURFACE TYPE A-1 PIPE BEDDING), US-11 (MANHOLE COVER & CONCRETE COLLAR FOR UNPAVED ROADS), US-12 (PLUG VALVE, BOX, COVER AND TAGO), AND US-25 (ABOVE GROUND AIR RELEASE VALVE ASSY. FOR FORCE MAINS).



STREAM CROSSING LEAK DETECTION
VALVE AND MANHOLE
N.T.S.



PREPARED BY:



WADETRIM

www.wadetrin.com
8745 Henderson Road, Suite 220
Tampa, FL 33634
813.882.6366 FAX 813.884.6990
Certificate of Authorization No. 3062

RIVERVIEW BOULEVARD BRIDGE
OVER MCLEWIS BAYOU
BRIDGE No. 134019
MANATEE COUNTY, FLORIDA

UTILITY RELOCATION
GENERAL NOTES & DETAILS

REVISION	BY	DATE
SURVEYED	ZNS	7/01
DESIGNED	BDG	10/10
DRAWN	JTK	10/10
CHECKED	LJJ	10/10

SEAL



ROBERT R. BREEN, PE No.61064

