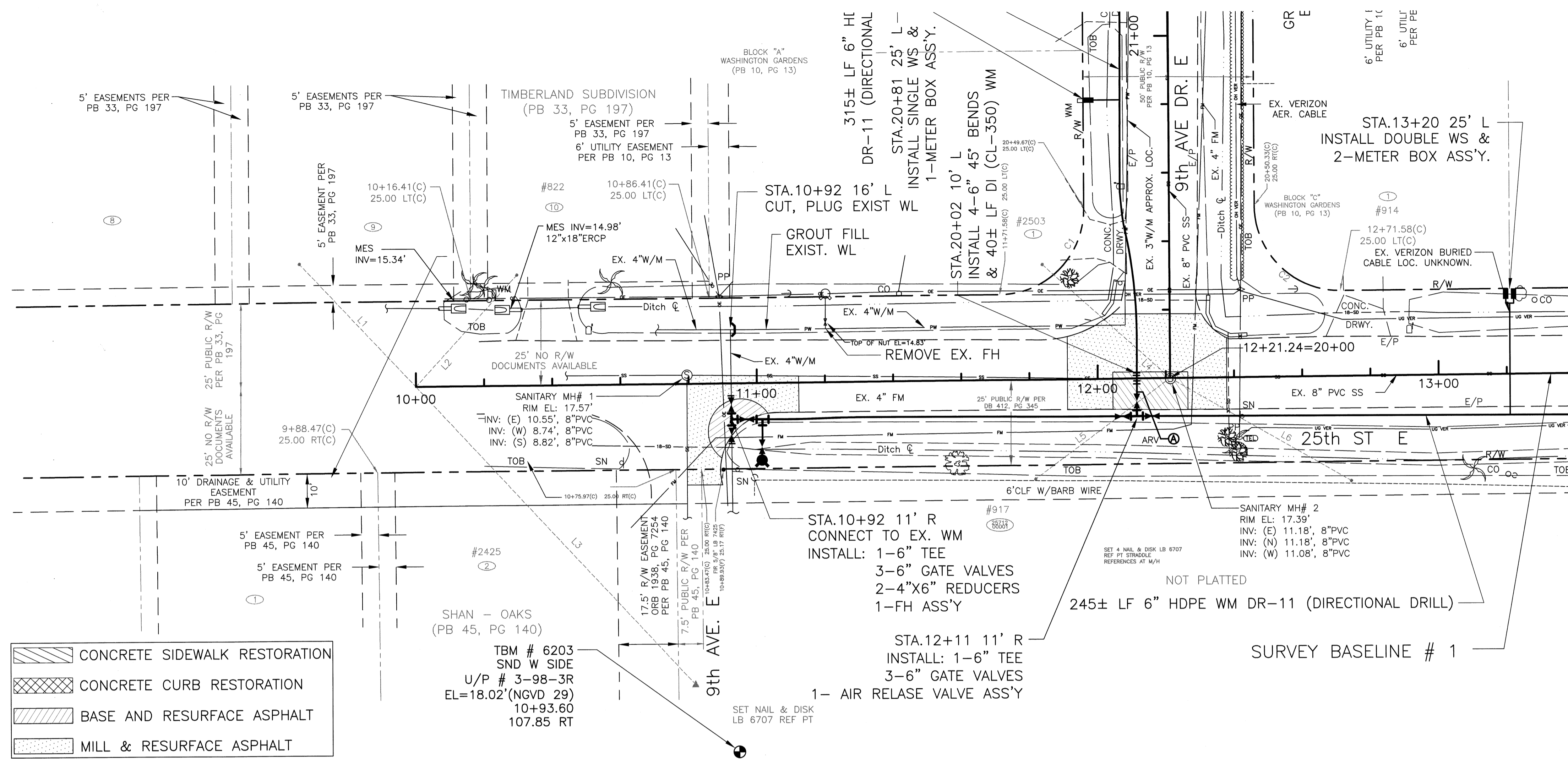
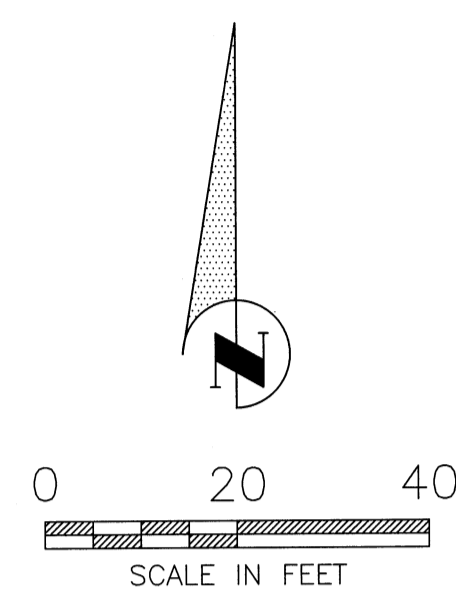
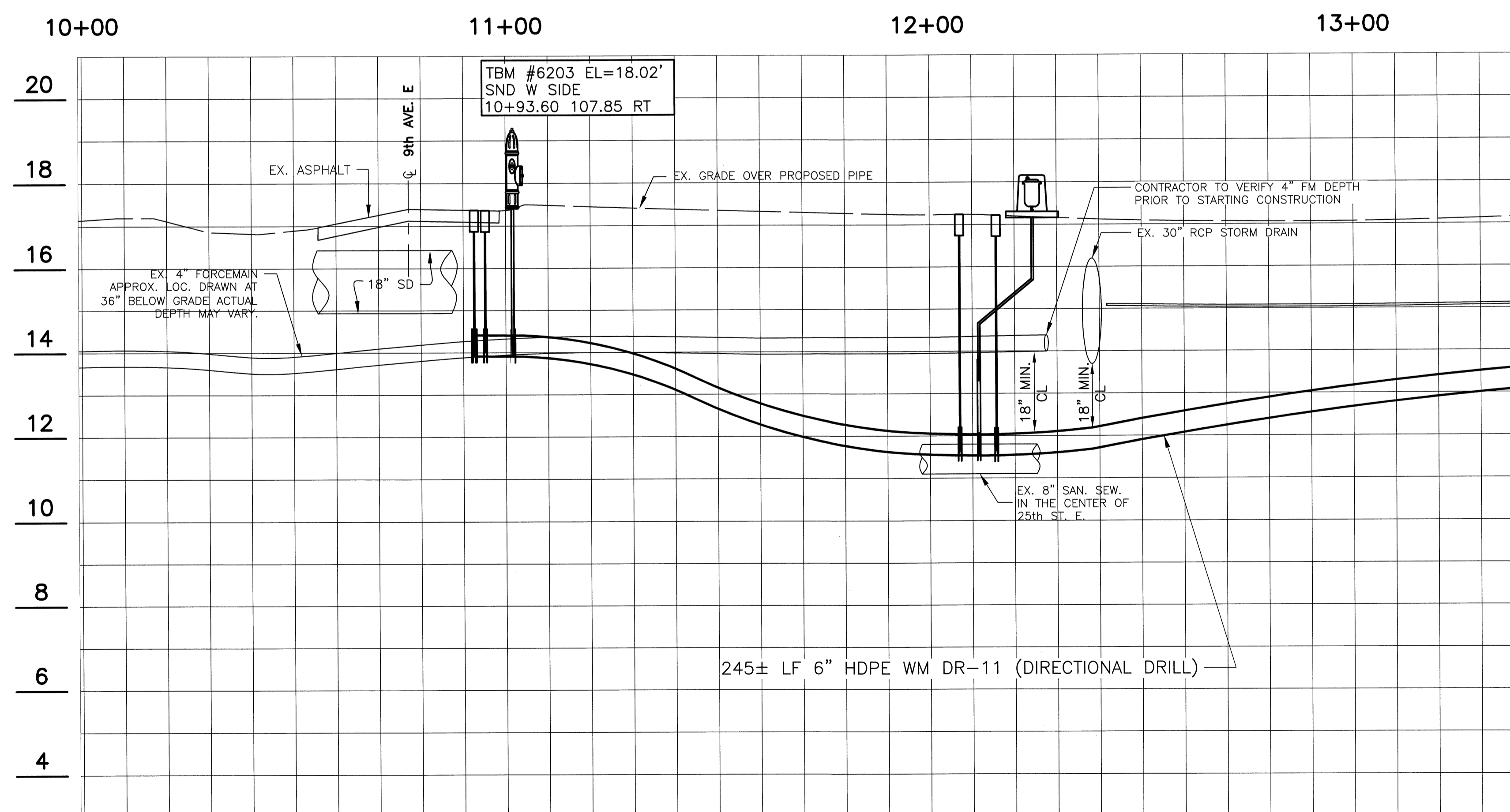


**WATER LINE IMPROVEMENTS  
WASHINGTON GARDENS  
PLAN & PROFILE STA. 11+00 TO 13+40**



- CONCRETE SIDEWALK RESTORATION
- CONCRETE CURB RESTORATION
- BASE AND RESURFACE ASPHALT
- MILL & RESURFACE ASPHALT



**NOTES:**

1. Where proposed waterline is within 10ft of Sanitary Sewer or 6ft of Forcemain (horizontal distance) all joints must be restrained in accordance with Manatee County Utility Standards or approved equal.
2. Contractor shall connect all existing water services from existing meter boxes to proposed new meter boxes unless where noted otherwise. Where existing meter boxes are on private property, the Contractor shall install (min. 1" dia. or larger where required by plumbing code) PVC schd 40 service line from the existing meter box to the new meter box along a route agreed to by the Project Representative and the property owner. The County requires all work on private property to be installed by a plumber licensed in Manatee County. All work shall meet the Florida Building Code and Manatee County Utility Standards and Codes, typ.

MATCH LINE STA. 13+40

NO.	1	DATE	9/13/10
BY	JS	REVISION DESCRIPTION	NOTE 2 REVISED
PROJECT #	404-6076770		
SURVEY #	1512 & 1432		
SEC./TWN./RGE	12/34S/17E		
SCALE	1"=20'		
	BY	DATE	
SURVEYED	FDC	DEC. 2009	
DESIGNED	JS/BLR	FEB. 2010	
DRAWN	BLR	FEB. 2010	
CHECKED	JS	MAY 2010	

JAMES STOCKWELL, P.E.  
FLORIDA P.E. # 67198

COPYRIGHT 2010 MANATEE COUNTY GOVERNMENT P:\WTR LINE Proj\Water Line - Washington Gardens\WGS\Water Line Improv - Washington Gardens.dwg;P&P - 3\_9/13/2010 7:29 AM Bruce Robertson, I.I., ARCH full bleed D (36.00 x 24.00 inches)