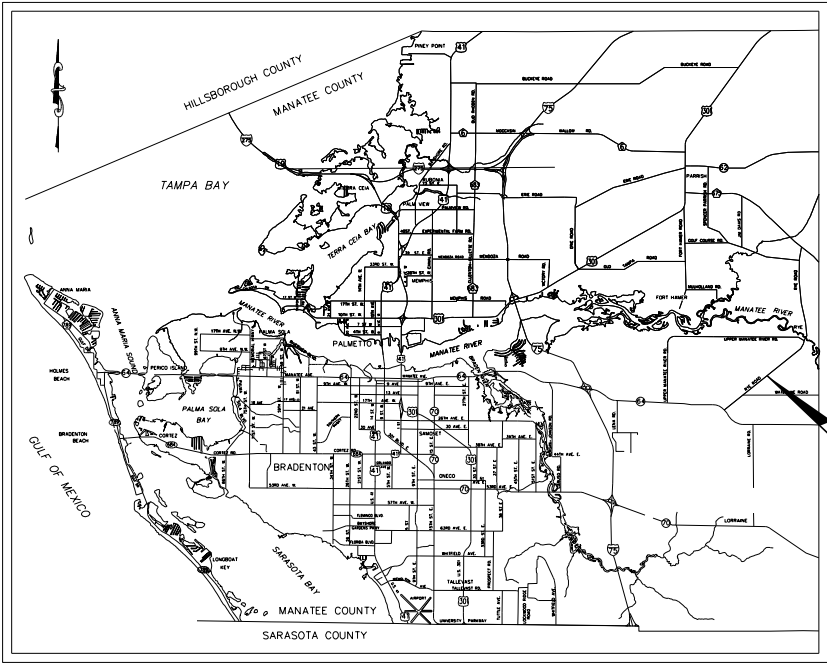


SIGNALIZATION PLANS
FOR
RYE ROAD AT FIRE RESCUE STATION 3
MANATEE COUNTY, FLORIDA



INDEX OF SIGNALIZATION CONCEPT

SHEET NO.	SHEET DESCRIPTION
T-1	KEY SHEET
T-2	SIGNATURE SHEET
T-3	TABULATION OF QUANTITIES
T-4 - T-5	GENERAL NOTES
T-6	ROADWAY PLAN
T-7 - T-8	SIGNING & PAVEMENT MARKING PLAN
T-9	SIGNALIZATION PLAN
T-10	CONDUIT SCHEMATIC
T-11	FIRE STATION PREEMPTION DETECTOR PLAN
T-12	PREEMPTION TIMING
T-13	STANDARD MAST ARM TABULATION
T-14	SPECIAL MAST ARM ASSEMBLIES DATA TABLE
T-15	PEDESTAL MOUNTED SIGNAL HEAD DETAIL
T-16	UTILITY CONFLICT SHEET
T-17	CLEARANCE CALCULATIONS
T-18	FUTURE SIGNALIZATION CONCEPT
T-19	REPORT OF CORE BORINGS FOR SIGNAL POLES
L-1	LIGHTING GENERAL NOTES
L-2	LIGHTING LEGEND
L-3	LIGHTING DATA TABLE
L-4	LIGHTING PLAN
L-5	SERVICE POINT DETAIL



PROJECT VICINITY MAP
N.T.S.

100% DESIGN SUBMITTAL
AUGUST 2024

PREPARED BY
Kimley»Horn

© 2024 KIMLEY-HORN AND ASSOCIATES, INC.
200 SOUTH ORANGE AVENUE, SUITE 600
ORLANDO, FL 32801
PHONE: (407) 898-1511
WWW.KIMLEY-HORN.COM

SIGNALIZATION PLANS
ENGINEER OF RECORD:
NICOLE R. HECK, P.E. NO: 84306

Kimley»Horn
200 SOUTH ORANGE AVENUE
SUITE 600
ORLANDO, FLORIDA 32801
TEL: (407) 898-1511
VENDOR NO. F560885615-001
REGISTRY: 35106

GOVERNING DESIGN STANDARDS:
Florida Department of Transportation, FY2024-25 Standard Plans for Road Construction at the following website:
<https://www.fdot.gov/design/standardplans>

Manatee County Public Work Standards and Specifications at the following website:
<https://public-works-standards-public-manateeegis.hub.arcgis.com/>

GOVERNING STANDARD SPECIFICATIONS:
Florida Department of Transportation, FY2024-25 Standard Specifications for Road and Bridge Construction at the following website:
<https://www.fdot.gov/programmanagement/Implemented/SpecBooks>

Manatee County Public Work Standards and Specifications at the following website:
<https://public-works-standards-public-manateeegis.hub.arcgis.com/>

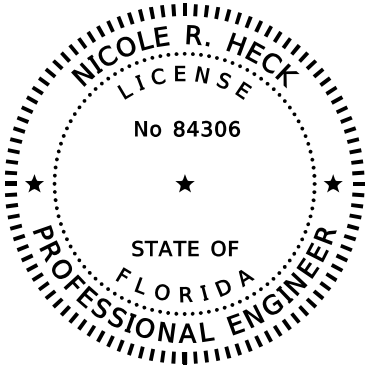
No.	REVISIONS	DATE	BY

THIS DOCUMENT IS PROTECTED BY SECTION 106 OF THE "UNITED STATES COPYRIGHT ACT".
REPRODUCTION OR ALTERATION OF THIS DOCUMENT OR THE INFORMATION CONTAINED HEREON BY ANY MEANS WHATSOEVER IS STRICTLY PROHIBITED WITHOUT THE PRIOR WRITTEN CONSENT OF KIMLEY-HORN AND ASSOCIATES, INC. CONSENT IS HEREBY GRANTED SPECIFICALLY TO GOVERNMENTAL AGENCIES TO REPRODUCE THIS DOCUMENT IN COMPLIANCE WITH F.S. CHAPTER 119.

NICOLE R. HECK, P.E.
FLORIDA LICENSE NUMBER: 84306

DATE	CIP NO.	SHEET NUMBER
JULY 2024		T-1

THE OFFICIAL RECORD OF THIS SHEET IS THE ELECTRONIC FILE DIGITALLY SIGNED AND SEALED UNDER RULE 61G15-23.004, F.A.C.



THIS DOCUMENT HAS BEEN DIGITALLY SIGNED AND SEALED BY:

NICOLE R HECK
2024.08.16 08:42:36 -04'00'

ON THE DATE ADJACENT TO THE SEAL

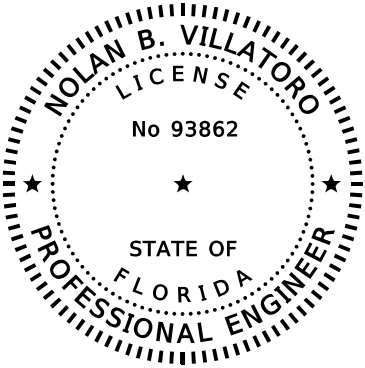
PRINTED COPIES OF THIS DOCUMENT ARE NOT CONSIDERED SIGNED AND SEALED AND THE SIGNATURE MUST BE VERIFIED ON ANY ELECTRONIC COPIES.

KIMLEY HORN AND ASSOCIATES, INC.
200 SOUTH ORANGE AVENUE, SUITE 600
ORLANDO, FLORIDA 32801
NICOLE R. HECK, P.E. NO. 84306

THE ABOVE NAMED PROFESSIONAL ENGINEER SHALL BE RESPONSIBLE FOR THE FOLLOWING SHEETS IN ACCORDANCE WITH RULE 61G15-23.004, F.A.C.

SIGNALIZATION PLANS

- | | |
|-----------|---------------------------------------|
| T-1 | KEY SHEET |
| T-2 | SIGNATURE SHEET |
| T-3 | TABULATION OF QUANTITIES |
| T-4 - T-5 | GENERAL NOTES |
| T-6 | ROADWAY PLAN |
| T-7 - T-8 | SIGNING & PAVEMENT MARKING PLAN |
| T-9 | SIGNALIZATION PLAN |
| T-10 | CONDUIT SCHEMATIC |
| T-11 | FIRE STATION PREEMPTION DETECTOR PLAN |
| T-12 | PREEMPTION TIMING |
| T-13 | STANDARD MAST ARM TABULATION |
| T-15 | PEDESTAL MOUNTED SIGNAL HEAD DETAIL |
| T-16 | UTILITY CONFLICT SHEET |
| T-17 | CLEARANCE CALCULATIONS |
| T-18 | FUTURE SIGNALIZATION CONCEPT |



THIS DOCUMENT HAS BEEN DIGITALLY SIGNED AND SEALED BY:

Nolan B Villatoro
2024.08.16 08:53:13-04'00'

ON THE DATE ADJACENT TO THE SEAL

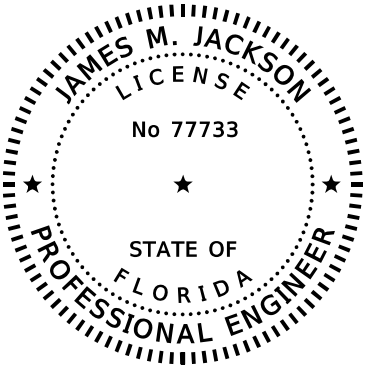
PRINTED COPIES OF THIS DOCUMENT ARE NOT CONSIDERED SIGNED AND SEALED AND THE SIGNATURE MUST BE VERIFIED ON ANY ELECTRONIC COPIES.

KIMLEY HORN AND ASSOCIATES, INC.
200 SOUTH ORANGE AVENUE, SUITE 600
ORLANDO, FLORIDA 32801
NOLAN B. VILLATORO, P.E. NO. 93862

THE ABOVE NAMED PROFESSIONAL ENGINEER SHALL BE RESPONSIBLE FOR THE FOLLOWING SHEETS IN ACCORDANCE WITH RULE 61G15-23.004, F.A.C.

SIGNALIZATION PLANS

- | | |
|------|--|
| T-2 | SIGNATURE SHEET |
| T-14 | SPECIAL MAST ARM ASSEMBLIES DATA TABLE |



THIS DOCUMENT HAS BEEN DIGITALLY SIGNED AND SEALED BY:

James M Jackson
2024.08.16 11:41:54 -04'00'

ON THE DATE ADJACENT TO THE SEAL

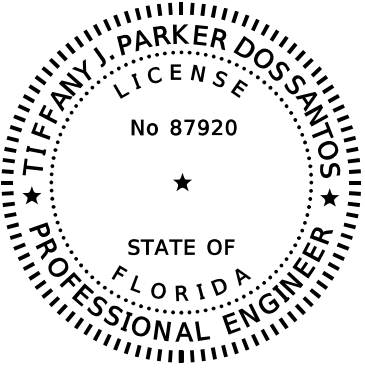
PRINTED COPIES OF THIS DOCUMENT ARE NOT CONSIDERED SIGNED AND SEALED AND THE SIGNATURE MUST BE VERIFIED ON ANY ELECTRONIC COPIES.

TERRACON CONSULTANTS INC.
8260 VICO COURT
SARASOTA, FLORIDA 34240
JAMES M. JACKSON, P.E. NO. 77733

THE ABOVE NAMED PROFESSIONAL ENGINEER SHALL BE RESPONSIBLE FOR THE FOLLOWING SHEETS IN ACCORDANCE WITH RULE 61G15-23.004, F.A.C.

SIGNALIZATION PLANS

- | | |
|------|---|
| T-2 | SIGNATURE SHEET |
| T-19 | REPORT OF CORE BORINGS FOR SIGNAL POLES |



THIS DOCUMENT HAS BEEN DIGITALLY SIGNED AND SEALED BY:

Tiffany J Parker dos Santos
2024.08.16 09:17:57-04'00'

ON THE DATE ADJACENT TO THE SEAL

PRINTED COPIES OF THIS DOCUMENT ARE NOT CONSIDERED SIGNED AND SEALED AND THE SIGNATURE MUST BE VERIFIED ON ANY ELECTRONIC COPIES.

KIMLEY HORN AND ASSOCIATES, INC.
200 SOUTH ORANGE AVENUE, SUITE 600
ORLANDO, FLORIDA 32801
TIFFANY J. PARKER DOS SANTOS, P.E. NO. 87920

THE ABOVE NAMED PROFESSIONAL ENGINEER SHALL BE RESPONSIBLE FOR THE FOLLOWING SHEETS IN ACCORDANCE WITH RULE 61G15-23.004, F.A.C.

SIGNALIZATION PLANS

- | | |
|-----|------------------------|
| T-2 | SIGNATURE SHEET |
| L-1 | LIGHTING GENERAL NOTES |
| L-2 | LIGHTING LEGEND |
| L-3 | LIGHTING DATA TABLE |
| L-4 | LIGHTING PLAN |
| L-5 | SERVICE POINT DETAIL |

TABULATION OF QUANTITIES																				
PAY ITEM NO.	DESCRIPTION	UNIT	SHEET NUMBERS														TOTAL THIS SHEET		GRAND TOTAL	
			T - 6		T - 7		T - 8		T - 9		T - 10		T - 11		L - 4					
			PLAN	FINAL	PLAN	FINAL	PLAN	FINAL	PLAN	FINAL	PLAN	FINAL	PLAN	FINAL	PLAN	FINAL	PLAN	FINAL	PLAN	FINAL
101-1	MOBILIZATION	LS	1														1		1	
102-1	MAINTENANCE OF TRAFFIC	LS	1														1		1	
110-4-10	REMOVAL OF EXISTING CONCRETE	SY	9														9		9	
110-23	TREE REMOVAL	EA							1								1		1	
522-1	CONCRETE SIDEWALK AND DRIVEWAYS, 4" THICK	SY	9														9		9	
570-1-2	PERFORMANCE TURF, SOD	SY	69														69		69	
630-2-11	CONDUIT, FURNISH & INSTALL, OPEN TRENCH	LF									115					105	220		220	
630-2-12	CONDUIT, FURNISH & INSTALL, DIRECTIONAL BORE	LF									735		60		75		870		870	
630-2-14	CONDUIT, FURNISH & INSTALL, ABOVEGROUND	LF											100		185		285		285	
632-7-1	SIGNAL CABLE - NEW OR RECONSTRUCTED INTERSECTION, FURNISH & INSTALL	PI							1								1		1	
633-2-32	FIBER OPTIC CONNECTION, INSTALL, TERMINATION	EA									2						2		2	
633-3-17	FIBER OPTIC CONNECTION HARDWARE, F&I, CONNECTOR PANEL	EA									2						2		2	
633-4-11	TELEPHONE CABLE, FURNISH & INSTALL	LF									625						625		625	
635-2-11	PULL & SPLICE BOX, F&I, 13" x 24" COVER SIZE	EA									11		1		8		20		20	
639-1-122	ELECTRICAL POWER SERVICE, F&I, UNDERGROUND, METER PURCHASED BY CONTRACTOR	AS													1		1		1	
639-2-1	ELECTRICAL SERVICE WIRE, FURNISH & INSTALL	LF									360				10		370		370	
639-3-11	ELECTRICAL SERVICE DISCONNECT, F&I, POLE MOUNT	EA									1				1		2		2	
639-4-6	EMERGENCY GENERATOR - PORTABLE, INSTALL HOUSING ONLY	EA							1								1		1	
641-2-12	PRESTRESSED CONCRETE POLE, F&I, TYPE P-II SERVICE POLE	EA									1				1		2		2	
646-1-11	ALUMINUM SIGNALS POLE, PEDESTAL	EA									2						2		2	
649-21-21	STEEL MAST ARM ASSEMBLY, FURNISH AND INSTALL, SINGLE ARM 78'	EA									1						1		1	
650-1-34	VEHICULAR TRAFFIC SIGNAL, FURNISH & INSTALL POLYCARBONATE, 3 SECTION, 1 WAY	AS									6						6		6	
665-1-11	PEDESTRIAN DETECTOR, FURNISH & INSTALL, STANDARD	EA											4				4		4	
670-5-111	TRAFFIC CONTROLLER ASSEMBLY, F&I, NEMA, 1 PREEMPTION	AS									1						1		1	
671-2-40	TRAFFIC CONTROLLER, MODIFY	EA											1				1		1	
676-3-10	SMALL EQUIPMENT ENCLOSURE, FURNISH AND INSTALL, LESS THAN 10"W X 13"H X 11" D	EA													1		1		1	
676-3-60	SMALL EQUIPMENT ENCLOSURE, REMOVE- POST/CABINET TO REMAIN	EA													1		1		1	
682-1-113	ITS CCTV CAMERA, F&I, DOME PTZ ENCLOSURE - PRESSURIZED, 1P, HIGH DEFINITION	EA									1						1		1	
684-6-11	WIRELESS COMMUNICATION DEVICE, FURNISH & INSTALL ETHERNET ACCESS POINT	EA											1				1		1	
685-1-13	UNINTERRUPTIBLE POWER SUPPLY, FURNISH & INSTALL, LINE INTERACTIVE WITH CABINET	EA									1						1		1	
700-1-111	SINGLE COLUMN GROUND SIGN ASSEMBLY, F&I GROUND MOUNT, LESS THAN 12 SF	EA					2										2		2	
700-1-112	SINGLE COLUMN GROUND SIGN ASSEMBLY, F&I GROUND MOUNT, 12.0-20.0 SF	EA				1		1									2		2	
700-1-500	SINGLE COLUMN GROUND SIGN ASSEMBLY, RELOCATE	EA					2										2		2	
700-3-201	SIGN PANEL, FURNISH & INSTALL OVERHEAD MOUNT, UP TO 12 SF	EA									2						2		2	
700-141-902	ENHANCED HIGHWAY SIGN ASSEMBLY, AC POWERED, REMOVE - GROUND MOUNT	EA				1		1									2		2	
711-11-123	THERMOPLASTIC, STANDARD, WHITE, SOLID, 12" FOR CROSSWALK AND ROUNDABOUT	LF				112		164									276		276	
711-11-125	THERMOPLASTIC, STANDARD, WHITE, SOLID, 24" FOR STOP LINE AND CROSSWALK	LF						23									23		23	
711-14-125	THERMOPLASTIC, PREFORMED, WHITE, SOLID, 24" FOR CROSSWALK	LF				78											78		78	
711-15-101	THERMOPLASTIC, STANDARD-OPEN GRADED ASPHALT SURFACES WHITE, SOLID, 6"	GM						0.036									0.036		0.036	
711-17-1	THERMOPLASTIC, REMOVE EXISTING THERMOPLASTIC PAVEMENT MARKINGS- SURFACE TO REMAIN	SF				105											105		105	
715-1-12	LIGHTING CONDUCTORS, F&I, INSULATED, NO.8 - 6	LF														2050	2050		2050	
715-7-11	LOAD CENTER, F&I, SECONDARY VOLTAGE	EA														1	1		1	
715-61-321	LIGHT POLE COMPLETE, F&I, STANDARD POLE STANDARD FOUNDATION, 40' MOUNTING HEIGHT, 10' ARM LENGTH	EA														3	3		3	
715-500-1	POLE CABLE DISTRIBUTION SYSTEM, FURNISH AND INSTALL, CONVENTIONAL	EA														3	3		3	

No.	REVISIONS	DATE	BY	<div><div>Kimley»Horn</div><div>© 2024 KIMLEY-HORN AND ASSOCIATES, INC. 200 SOUTH ORANGE AVENUE, SUITE 600, ORLANDO, FL 32801 PHONE: (407) 898-1511 WWW.KIMLEY-HORN.COM</div></div>						<div><div><div>KHA PROJECT 6115560 DATE AUGUST 2024 SCALE AS SHOWN DESIGNED BY: JBO DRAWN BY: JBO CHECKED BY: NRH</div><div><div>Manatee County FLORIDA</div><div>RYE ROAD AT FIRE RESCUE STATION 3 MANATEE COUNTY</div></div></div></div>						<div><div>LICENSED PROFESSIONAL</div><div>NICOLE R. HECK, P.E. FL LICENSE NUMBER 84306</div></div>				<div><div>TABULATION OF QUANTITIES</div></div>				<div><div>SHEET NUMBER</div><div>T-3</div></div>	
josh.quinn																									
8/8/2024 11:07:14 AM Default																									
K:\ORL_TPTO\148400114_Gene Witt Elementary\148400114\signals\TABSG02.dgn																									

THE OFFICIAL RECORD OF THIS SHEET IS THE ELECTRONIC FILE DIGITALLY SIGNED AND SEALED UNDER RULE 61G15-23.004, F.A.C.

SIGNALIZATION NOTES:

1. THE MAINTAINING AGENCY IS MANATEE COUNTY. THE CONTRACTOR SHALL NOTIFY THE MAINTAINING AGENCY SEVEN DAYS PRIOR TO BEGINNING WORK. THE CONTRACTOR IS RESPONSIBLE TO CONTACT THE MAINTAINING AGENCY FOR THE PHYSICAL ADDRESS ONCE THE SERVICE DROP LOCATION HAS BEEN ESTABLISHED.
 2. THE CONTRACTOR IS TO NOTIFY UTILITY OWNERS THROUGH SUNSHINE ONE CALL OF FLORIDA, INC. (1-800-432-4770) TWO (2) FULL BUSINESS DAYS IN ADVANCE OF BEGINNING CONSTRUCTION ON THE JOB SITE. ALL UTILITY CONFLICTS SHALL BE RESOLVED PRIOR TO SETTING OF THE SIGNAL POLES OR THE LAYING OF CONDUIT.
 3. THE CONTRACTOR SHALL NOTIFY THE APPROPRIATE UTILITY COMPANY AT LEAST TWO WORKING DAYS IN ADVANCE OF POLE SETTING OPERATIONS WHERE CONFLICT WITH OVERHEAD ELECTRICAL CONDUCTORS IS EXPECTED. ALL SAFETY CLEARANCES TO PRIMARY ELECTRICAL LINES SHALL BE STRICTLY ADHERED TO.
 4. AT THE TIME OF FINAL INSPECTION, THE CONTRACTOR SHALL FURNISH THE ENGINEER WITH TWO COMPLETE SETS OF AS-BUILT PLANS. THE CONTRACTOR SHALL ALSO FURNISH THREE COMPLETE SETS OF AS-BUILT PLANS AND ONE SET OF APPROVED SHOP DRAWINGS TO THE MAINTAINING AGENCY.
 5. DELIVER THREE SETS OF RECORD DRAWINGS, TWO SETS OF IMSA INSPECTION FORMS AND ONE COMPACT DISC OF RECORD DRAWINGS TO MR. AARON BURKETT, THE MANATEE COUNTY TRAFFIC OPERATIONS DIVISION MANAGER AT 2904 12TH ST CT E, BRADENTON, FL 34208. RECORD DRAWINGS MUST BE DELIVERED TO THE COUNTY 5 BUSINESS DAYS PRIOR TO SCHEDULING THE FINAL INSPECTION.
 6. UPON PASSING THE FINAL INSPECTION THE CONTRACTOR SHALL SEND A WRITTEN REQUEST TO THE PROJECT MANAGEMENT DIVISION AND THE TRANSPORTATION DIVISION TO TRANSFER MAINTENANCE FROM THE CONTRACTOR TO MANATEE COUNTY. MANATEE COUNTY WILL RESPOND WITHIN 5 WORKING DAYS TO ESTABLISH A TIME TABLE FOR THE TRANSFER OF MAINTENANCE RESPONSIBILITY.
 7. THE CONTRACTOR SHALL MEET ALL CRITERIA OUTLINED IN "THE MINIMUM SPECIFICATIONS FOR TRAFFIC CONTROL SIGNALS AND DEVICES" AND ALL STANDARDS AND SPECIFICATIONS UTILIZED BY THE MAINTAINING AGENCY.
 8. IT SHOULD BE NOTED THAT NO TEST BORINGS WERE MADE WHERE CONDUIT RUNS ARE TO BE INSTALLED BY DIRECTIONAL DRILLING OR TRENCHING.
 9. INSTALL ONE SPARE 2" CONDUIT FOR FUTURE USE AT ALL INTERSECTION CROSSINGS. CONDUIT SHALL TERMINATE AT A PULL BOX AND BE STUBBED AND PROPERLY CAPPED.
 10. A #14 AWF INSULATED PULL WIRE SHALL BE INSTALLED IN ALL SPARE CONDUITS. AT LEAST TWO FEET OF PULL WIRE SHALL BE ACCESSIBLE AT EACH CONDUIT TERMINATION AND BE SECURED WITHIN THE PULL BOX. PAYMENT OF THE PULL WIRE SHALL BE INCIDENTAL TO THE CONDUIT.
 11. ALL UNDERGROUND CONDUIT ENTRY HOLES ON SIGNAL POLES SHALL BE STUBBED OUT AND CAPPED IN A PROPOSED PULL BOX.
 12. AT LOCATIONS WHERE UNDERGROUND UTILITIES ARE IN CLOSE PROXIMITY TO THE SIGNAL POLE FOUNDATION OR CONDUIT RUN AS DETERMINED BY THE ENGINEER, THE CONTRACTOR SHALL HAND-DIG THE FIRST 48 INCHES OF DEPTH FOR THE POLE FOUNDATION OR THE CONDUIT RUN.
 13. PULL BOXES SHALL BE POLYMER CONCRETE TYPE MATERIAL AND BE TRAFFIC BEARING.
 14. A MANUAL PUSH BUTTON CORD SHALL BE INSTALLED IN THE CONTROLLER CABINET.
 15. CONTROLLER CABINET DOOR SHALL OPEN TOWARD THE RIGHT OF WAY LINE AND AWAY FROM TRAFFIC.
 16. WHEN INSTALLING GROUND WIRE IN THE CONTROLLER CABINETS, THE COPPER GROUND WIRE SHALL NOT COME INTO CONTACT WITH THE ALUMINUM CABINET, EXCEPT AT THE TERMINATION POINT.
 17. ALL FIELD WIRING, INCLUDING SIGNAL HEAD WIRING AND LOOP LEAD-INS SHALL BE IDENTIFIED WITH CLEARLY MARKED WEATHERPROOF TAGS. THE PROPOSED TAGGING SYSTEM SHALL BE IN ACCORDANCE WITH THE FDOT AND THE MAINTAINING AGENCIES STANDARD SPECIFICATIONS.
 18. THE SIGNAL CONTRACTOR IS RESPONSIBLE TO SIZE ALL SIGNAL CABLES TO ENSURE NO MORE THAN A 5% VOLTAGE DROP AT THE END OF ANY CIRCUIT OCCURS. VOLTAGE DROP IS REFERENCED TO THE LINE SIDE OF THE METER.
 19. ALL SIGNAL EQUIPMENT TO REMAIN UNLESS OTHERWISE NOTED.
 20. ALL REMOVED SIGNAL EQUIPMENT TO BE RETURNED TO MANATEE COUNTY TRAFFIC OPERATIONS. CONTACT: CORY MILES - (941) 708-7509 (EXT. 7262)
 21. AT LEAST FIVE (5) FULL BUSINESS DAYS PRIOR TO BEGINNING THE TRAFFIC SIGNAL INSTALLATION, CONTRACTOR SHALL CONTACT THE TRAFFIC SIGNAL INSPECTORS/LIAISONS:
MANATEE COUNTY TRAFFIC OPERATIONS DIVISION
MR. AARON BURKETT
2904 12TH STREET COURT EAST
BRADENTON, FL 34208
PHONE: 941-708-7509

MANATEE COUNTY TRAFFIC ENGINEERING DIVISION
MR. VISHAL KAKKAD
2904 12TH STREET COURT EAST
BRADENTON, FL 34208
PHONE: 941-749-3500

MANATEE COUNTY PROJECT MANAGEMENT DIVISION
DEREK O'SULLIVAN
1022 26TH AVENUE EAST
BRADENTON, FL 34208
PHONE: 941-708-7450
 22. AT THE COMPLETION OF THE PROJECT, PROVIDE AS-BUILT PLANS IN ELECTRONIC FORM (PDF) TO:
MANATEE COUNTY
MR. AARON BURKETT
2904 12TH STREET COURT EAST
BRADENTON, FL 34208
EMAIL: AARON.BURKETT@MYMANATEE.ORG
PHONE: 941-708-7509
 23. THE LOCATIONS OF THE UTILITIES SHOWN IN THE PLANS ARE BASED ON LIMITED INVESTIGATION TECHNIQUES AND SHOULD BE CONSIDERED APPROXIMATE ONLY.
 24. EXISTING UTILITIES ARE TO REMAIN IN PLACE UNLESS OTHERWISE NOTED.
 25. THE CONTRACTOR MUST NOTIFY THE TRAFFIC OPERATIONS DIVISION VIA THE PROJECT MANAGER AT LEAST FIVE (5) BUSINESS DAYS IN ADVANCE TO SCHEDULE THE INITIAL POWER SERVICE CONNECTION AND/OR TRAFFIC SIGNAL INSPECTION.
 26. CONTRACTOR SHALL COORDINATE PAVEMENT MARKINGS AND SIGNAGE WORK WITH SCHEDULING OF SIGNAL ACTIVATION. THE SIGNAL SHALL NOT BE FULLY ACTIVATED UNTIL ALL PROPOSED STOP BARS, CROSSWALKS, RAMPS, AND PAVEMENT REMOVAL WORK IS COMPLETE. THE EXISTING STOP BARS SHALL BE REMOVED UPON SIGNAL ACTIVATION.
 27. LIST OF UTILITY OWNERS:

CHARTER COMMUNICATIONS	THOMAS MUMEA	941-737-0003
FLORIDA POWER & LIGHT	BRIAN GARVER	941-723-4442
FRONTIER COMMUNICATIONS	DENISE HUTTON	941-504-9652
MANATEE COUNTY TRANSPORTATION	KATHY MCMAHON	941-792-8811
MANATEE COUNTY UTILITY OPERATIONS	KATHY MCMAHON	941-792-8811
PEACE RIVER ELECTRIC	PAUL ROBERTS	863-767-4650
TECO PEOPLES GAS	JOAN DOMNING	813-275-3783
ZAYO GROUP	HENRY KLOBUCAR	406-496-6510

[illegible]

FIRE STATION NOTES:

1. COORDINATE AND SCHEDULE ALL FIRE STATION PREMISES WORK WITH THE LOGISTICS OFFICER INCLUDING BUT NOT LIMITED TO CONSTRUCTION SCHEDULE, DOWNTIME REQUIREMENTS BETWEEN REMOVING THE EXISTING PUSH BUTTON AND ACTIVATION OF NEW PUSH BUTTON, AND/OR LOCATION OF CONDUIT AND PUSH BUTTON.
2. CONTRACTOR SHALL TEST PREEMPTION PLANS PRIOR TO FINAL ACCEPTANCE WITH THE COUNTY. CONTRACTOR SHALL COORDINATE WITH MANATEE COUNTY TRAFFIC OPERATIONS AND TRAFFIC ENGINEERING DIVISIONS, AS WELL AS THE FIRE STATION REPRESENTATIVE, SO THAT THEY CAN ALL BE IN ATTENDANCE DURING THE TEXT.
3. FIRE STATION REPRESENTATIVE CONTACT INFORMATION:
SCOTT RHODES
EAST MANATEE FIRE RESUCE
LOGISTICS OFFICER
OFFICE: (941) 751-5611
CELL: (941) 224-0117
SRHODES@EMFR.ORG

MAINTENANCE OF TRAFFIC NOTES:

1. TRAFFIC CONTROL FOR THE PROJECT SHALL COMPLY WITH THE LATEST EDITION OF THE FDOT DESIGN STANDARDS, THE MUTCD, THE FDOT STANDARD SPECIFICATIONS FOR ROAD AND BRIDGE CONSTRUCTION, AND MANATEE COUNTY PUBLIC WORK STANDARDS. THE CONTRACTOR MAY BE DIRECTED BY THE ENGINEER TO DEVELOP AND IMPLEMENT MODIFICATIONS TO THE TRAFFIC SIGNAL OPERATIONS (I.E. TIMING AND PHASING) FOR ANY SIGNAL LOCATED WITHIN THE PROJECT LIMITS. THE CONTRACTOR'S RESPONSE TIME TO ALL REPORTED MALFUNCTIONS OF A TRAFFIC SIGNAL SHALL BE NO MORE THAN 2 HOURS AND SHALL RESTORE ALL MALFUNCTIONS OF THE SIGNAL EQUIPMENT TO ITS LEVEL OF OPERATION PRIOR TO THE MALFUNCTION WITHIN 24 HOURS. DURING THIS TIME, THE CONTRACTORS SHALL PROVIDE AT HIS EXPENSE, TEMPORARY TRAFFIC CONTROL DEVICES, FLAGGER PERSONNEL, AND LAW ENFORCEMENT PERSONNEL AS NECESSARY TO MAINTAIN A SAFE AND EFFICIENT FLOW OF TRAFFIC AT THE EFFECTED SIGNALIZED AND UNSIGNALIZED INTERSECTIONS. THE ENGINEER SHALL APPROVE ALL MODIFICATIONS PRIOR TO THEIR IMPLEMENTATION.
2. ALL WORK MUST FOLLOW FDOT 102-600 SERIES STANDARDS FOR MOT. NO LANE CLOSURE WITHOUT PM AND DIRECTOR APPROVAL. 9AM - 2PM AND/OR NIGHT HOURS ONLY.
3. ATTENTION IS CALLED TO THE FOLLOWING FDOT STANDARD PLANS FOR DEVELOPING THE MAINTENANCE OF TRAFFIC PLAN:

- 102-600

- 102-601

- 102-602

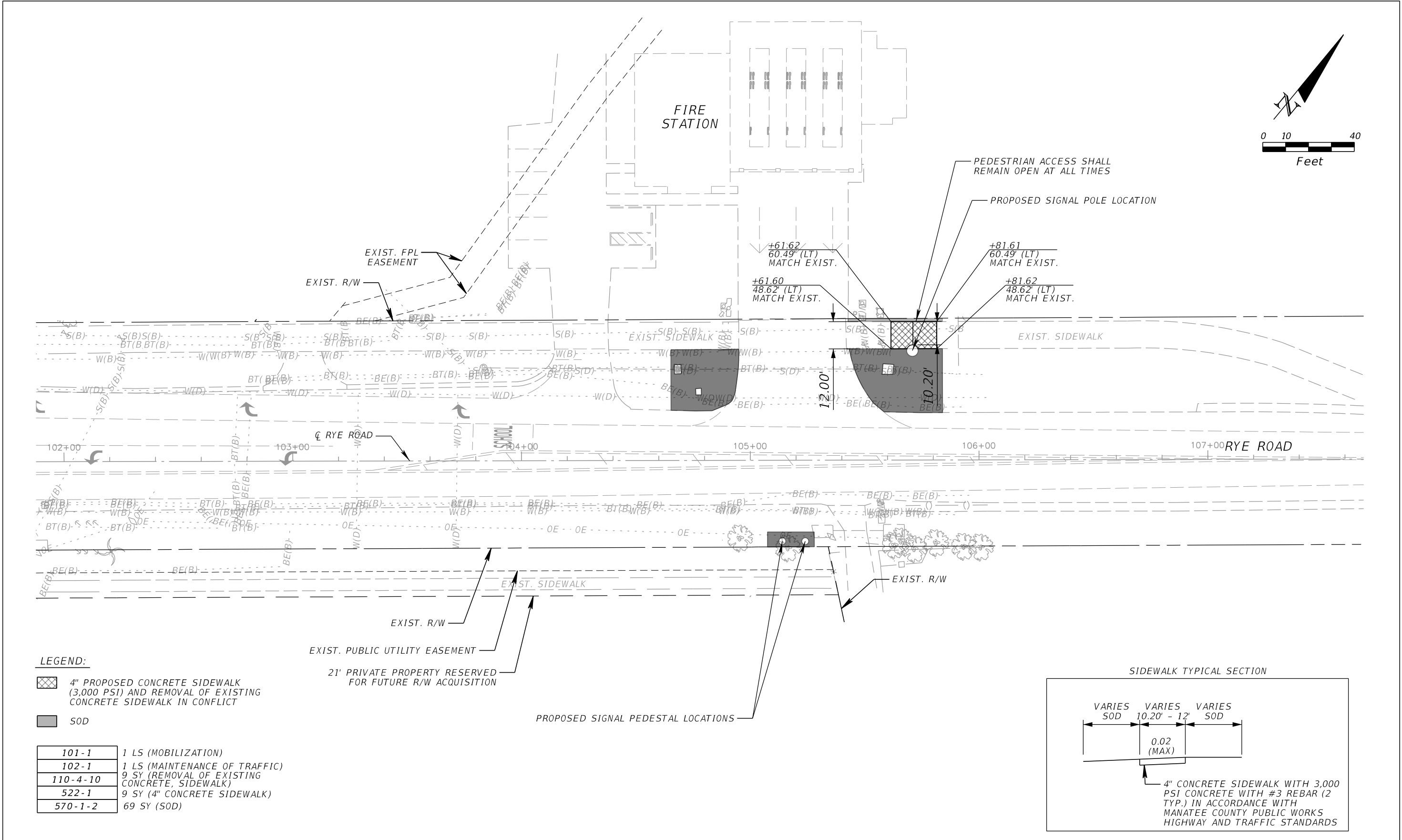
- 102-603

- 102-660

PAY ITEM NOTES:

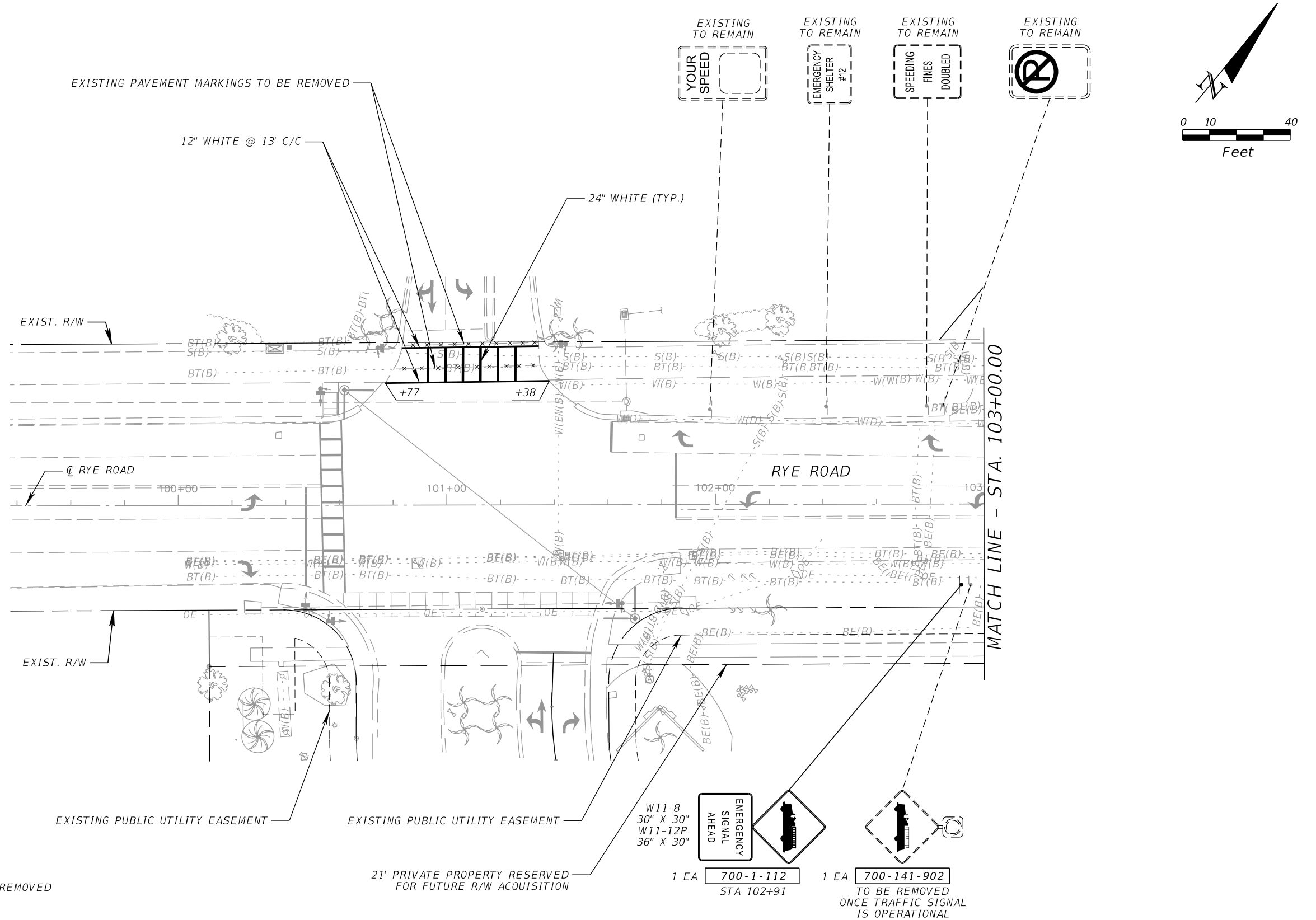
- PAY ITEM 630-2-14
CONDUIT TO BE PAINTED TO MATCH WALL. USE RIGID ALUMINUM FOR ALL ABOVE GROUND CONDUIT AND FITTINGS. USE MINIMUM SIZE CONDUIT NECESSARY BASED ON THE SIZE OF CONDUCTORS UTILIZED. COST FOR CONDUCTORS ARE INCIDENTAL.
- PAY ITEM 633-2-31
PAYMENT FOR SPLICING OF THE TELEPHONE CABLE.
- PAY ITEM 633-4-11
PROVIDE GREATER THAN CAT-5 CABLE TYPE WITH RJ45 CONDUCTOR COUNT. EXISTING CONDUIT PROVIDING COMMUNICATION BETWEEN THE FIRE STATION AND THE TRAFFIC SIGNAL BEACONS TO BE ABANDONED IN PLACE.
- PAY ITEM 635-2-11
STANDARD PULL BOX DIMENSION SHALL BE 17" X 30" X 12" AND THE LID SHALL BE STAMPED "MANATEE COUNTY TRAFFIC SIGNAL" ON THE COVER.
- PAY ITEM 639-4-6
MANATEE COUNTY WILL NOT FURNISH THIS ITEM. THE CONTRACTOR SHALL FURNISH AND INSTALL THE HOUSING AND FOUNDATION/PAD. ALL COSTS FOR THE HOUSING FOUNDATION/PAD IS INCLUDED IN THE COST OF THIS PAY ITEM. THE CONTRACTOR SHALL COORDINATE WITH MANATEE COUNTY TO OBTAIN THE DESIRED HOUSING DIMENSIONS.
- PAY ITEM 665-1-11
INSTALL NON-STANDARD PUSH BUTTONS INSIDE THE FIRE STATION. ONE BUTTON FOR THE NORTHBOUND DIRECTION AND ONE PUSH BUTTON FOR THE SOUTHBOUND DIRECTION. THE BUTTONS SHALL BE LABELED WITH ALUMINUM TAGS MOUNTED ABOVE EACH BUTTON, "NORTH" AND "SOUTH". PUSH BUTTON SIGN AND HOUSING IS INCIDENTAL TO THE PUSH BUTTON.
- PAY ITEM 670-5-111
PROVIDE TRAFFICWARE 980 ATC TRAFFIC CONTROLLER AND TYPE 6 CABINET WITH FRONT AND BACK ACCESS DOORS PER MANATEE COUNTY SPEC.
- PAY ITEM 676-3-10
INSTALL SMALL ELECTRICAL EQUIPMENT ENCLOSURE, AND ALL ASSOCIATED COMPONENTS TO ENSURE A COMPLETE SYSTEM, FOR THE PURPOSE OF EMERGENCY SIGNAL DETECTION AND PRE-EMPTION. ENCLOSURE TO BE PAINTED TO MATCH WALL.
- PAY ITEM 676-3-60
REMOVE EXISTING SMALL ELECTRICAL EQUIPMENT ENCLOSURE FOR THE EXISTING EMERGENCY SIGNAL DETECTOR.
- PAY ITEM 682-1-113
PROVIDE BOSCH SECURITY SYSTEMS DOME CAMERA MODEL VG5 ITS 7000i STARLITE SERIES 1080P 30X40 FULLY COMPATIBLE WITH THE EXISTING ADVANCED TRAFFIC MANAGEMENT SYSTEM. SHALL BE MOUNTED ON THE MAST ARM 2 FEET OUTSIDE OF THE VEHICULAR TRAVEL LANE.
- PAY ITEM 684-6-11
PROVIDE RUGGEDCOM RX1400 DEVICE WITH EXTERNAL ANTENNA 6GK6014-0AM23-0BA0-Z A07+B00+C02+D02+E00+F00+G00+V00.
- PAY ITEM 685-1-13
PROVIDE ALPHA FXM HP1100 LINE INTERACTIVE WITH CABINET ASSEMBLY.
- PAY ITEM 700-141-902
REMOVAL OF EXISTING PULL BOXES IS INCIDENTAL TO THE REMOVAL OF THE EXISTING TRAFFIC SIGNAL BEACONS. EXISTING CONDUIT PROVIDING COMMUNICATION BETWEEN THE FIRE STATION AND THE TRAFFIC SIGNAL BEACONS TO BE ABANDONED IN PLACE.

				<div><div><div>Kimley»Horn</div><div>© 2024 KIMLEY-HORN AND ASSOCIATES, INC. 200 SOUTH ORANGE AVENUE, SUITE 600, ORLANDO, FL 32801 PHONE: (407) 898-1511 WWW.KIMLEY-HORN.COM</div></div><div><div>KHA PROJECT 6115560</div><div>DATE AUGUST 2024</div><div>SCALE AS SHOWN</div><div>DESIGNED BY: JBO</div><div>DRAWN BY: JBO</div><div>CHECKED BY: NRH</div></div><div><div><div><div>Manatee County</div><div>FLORIDA</div></div><div>RYE ROAD AT FIRE RESCUE STATION 3</div></div><div>MANATEE COUNTY</div></div><div><div>LICENSED PROFESSIONAL</div><div>NICOLE R. HECK, P.E.</div><div>FL LICENSE NUMBER 84306</div></div><div>DATE:</div></div>	<div>GENERAL NOTES (02)</div>	<div>SHEET NUMBER</div> <div>T-5</div>
No.	REVISIONS	DATE	BY			



				<div><div>Kimley»Horn</div><div>© 2024 KIMLEY-HORN AND ASSOCIATES, INC. 200 SOUTH ORANGE AVENUE, SUITE 600, ORLANDO, FL 32801 PHONE: (407) 898-1511 WWW.KIMLEY-HORN.COM</div></div>	<div>KHA PROJECT 6115560</div>	<div><div><div><div><div></div><div>Manatee County FLORIDA</div></div></div><div>RYE ROAD AT FIRE RESCUE STATION 3</div><div>MANATEE COUNTY</div></div></div>	<div>LICENSED PROFESSIONAL</div> <div>NICOLE R. HECK, P.E.</div> <div>FL LICENSE NUMBER 84306</div>	<div>ROADWAY PLAN</div> <div>T-6</div>	<div>SHEET NUMBER</div>
					<div>DATE AUGUST 2024</div>				
					<div>SCALE AS SHOWN</div>				
					<div>DESIGNED BY: JBO</div>				
					<div>DRAWN BY: JBO</div>				
					<div>CHECKED BY: NRH</div>				
No.	REVISIONS	DATE	BY			FL	DATE:		
josh.quinn8/8/202411:07:23 AMDefaultK:\ORL_TPTO\148400114_Gene Witt Elementary\148400114\roadway\PLANRD02.dgn									

THE OFFICIAL RECORD OF THIS SHEET IS THE ELECTRONIC FILE DIGITALLY SIGNED AND SEALED UNDER RULE 61G15-23.004, F.A.C.

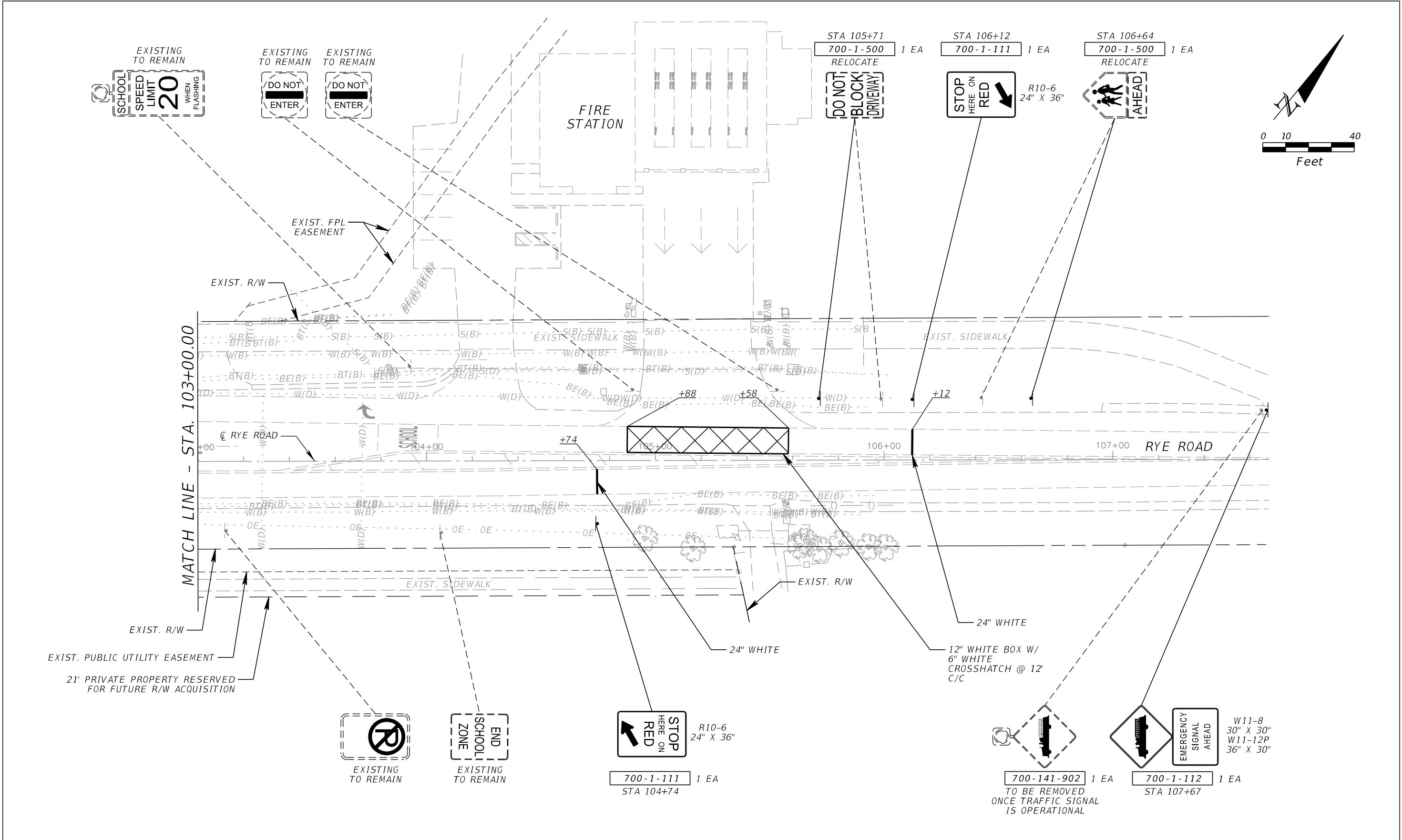


LEGEND:

× EXISTING PAVEMENT MARKINGS TO BE REMOVED

				<div><div>Kimley»Horn</div><div>© 2024 KIMLEY-HORN AND ASSOCIATES, INC. 200 SOUTH ORANGE AVENUE, SUITE 600, ORLANDO, FL 32801 PHONE: (407) 898-1511 WWW.KIMLEY-HORN.COM</div></div>	<div><div>KHA PROJECT 6115560</div><div>DATE AUGUST 2024</div><div>SCALE AS SHOWN</div><div>DESIGNED BY: JBO</div><div>DRAWN BY: JBO</div><div>CHECKED BY: NRH</div></div>	<div><div><div>Manatee County FLORIDA</div></div><div>RYE ROAD AT FIRE RESCUE STATION 3 MANATEE COUNTY</div></div>	<div><div>LICENSED PROFESSIONAL</div><div>NICOLE R. HECK, P.E. FL LICENSE NUMBER 84306</div><div>DATE:</div></div>	<div>SIGNING & PAVEMENT MARKING PLAN (01)</div>	<div>SHEET NUMBER T-7</div>
No.	REVISIONS	DATE	BY						
josh.quinn				8/8/2024 11:07:28 AM Default					

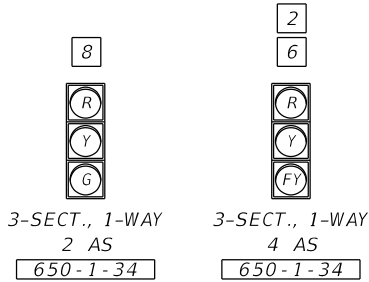
THE OFFICIAL RECORD OF THIS SHEET IS THE ELECTRONIC FILE DIGITALLY SIGNED AND SEALED UNDER RULE 61G15-23.004, F.A.C.



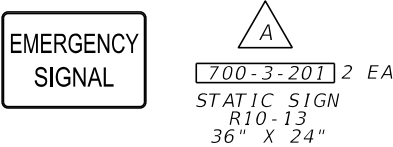
<div><div><div>Kimley»Horn</div><div>© 2024 KIMLEY-HORN AND ASSOCIATES, INC. 200 SOUTH ORANGE AVENUE, SUITE 600, ORLANDO, FL 32801 PHONE: (407) 898-1511 WWW.KIMLEY-HORN.COM</div></div><div><div>KHA PROJECT 6115560</div><div>DATE AUGUST 2024</div><div>SCALE AS SHOWN</div><div>DESIGNED BY: JBO</div><div>DRAWN BY: JBO</div><div>CHECKED BY: NRH</div></div><div><div><div>Manatee County FLORIDA</div><div>RYE ROAD AT FIRE RESCUE STATION 3 MANATEE COUNTY</div></div><div>FL</div></div><div><div>LICENSED PROFESSIONAL</div><div>NICOLE R. HECK, P.E. FL LICENSE NUMBER 84306</div><div>DATE:</div></div><div><div>SIGNING & PAVEMENT MARKING PLAN (02)</div></div><div><div>SHEET NUMBER</div><div>T-8</div></div></div>			
No.	REVISIONS	DATE	BY
1	JOHN QUINN	8/8/2024	11:07:30 AM

THE OFFICIAL RECORD OF THIS SHEET IS THE ELECTRONIC FILE DIGITALLY SIGNED AND SEALED UNDER RULE 61G15-23.004, F.A.C.

SIGNAL DISPLAY DETAILS



STATIC SIGN DETAILS



CONTROLLER TIMINGS

MOVEMENT NUMBER	2	6	8
DIRECTION	SB	NB	EB
TURN TYPE			
MINIMUM GREEN	-	-	45
EXTENSION	-	-	0.0
YELLOW CLEARANCE	4.8	4.8	3.4
ALL RED	2.0	2.0	2.7
MINIMUM DWELL	-	-	45
MAXIMUM GREEN 2	-	-	-
MAXIMUM LIMIT	-	-	-
ADJUST BY	-	-	-
FLASHING DON'T WALK	-	-	-
PED. CLEARANCE	-	-	-
DETECTOR MEMORY	-	-	-
DET. CROSS SWITCH	-	-	-
DUAL ENTRY	-	-	-
RECALL	-	-	-

SIGNAL OPERATING PLAN

S.O.P. 1



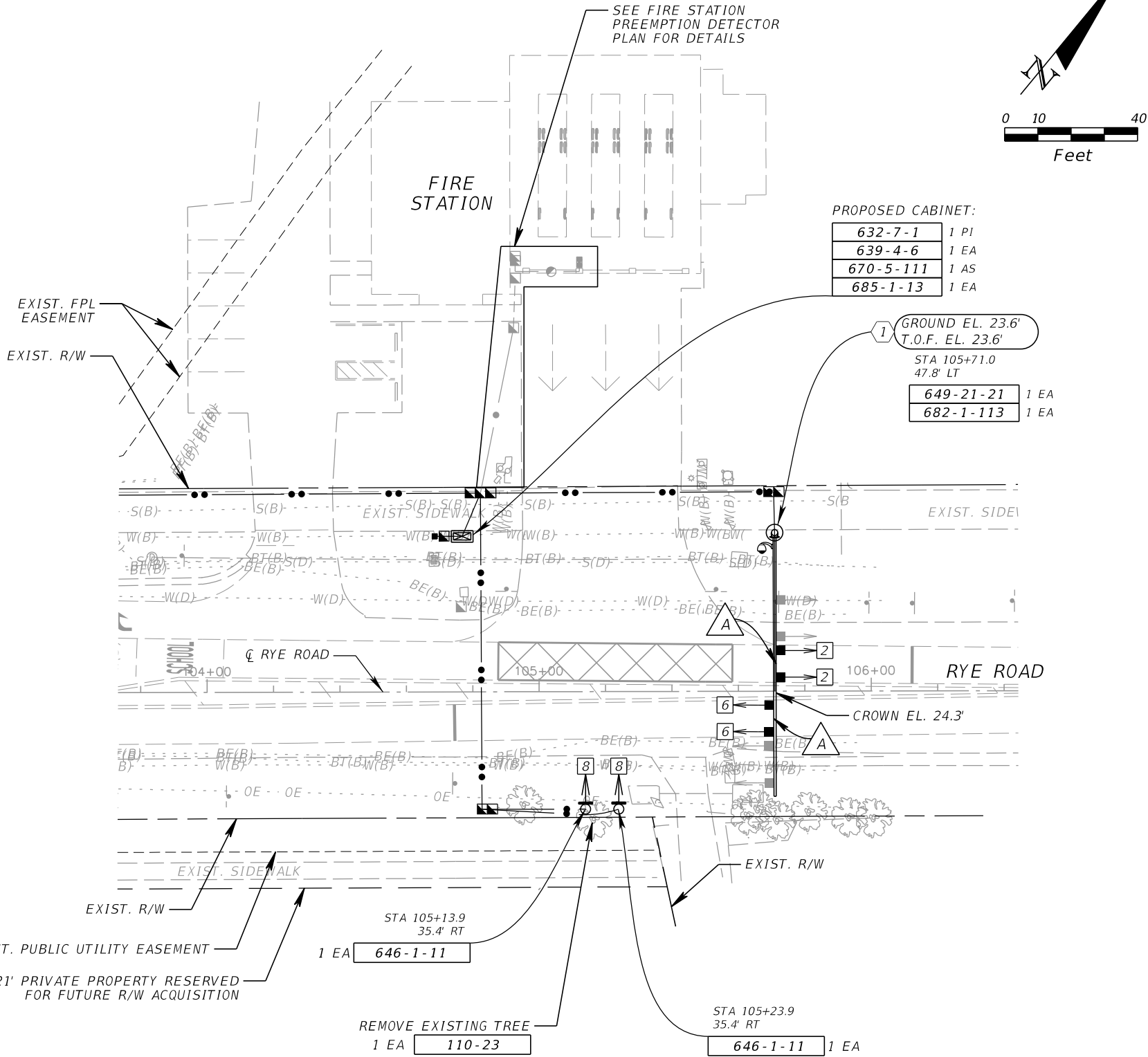
LEGEND:

- PROPOSED SIGNAL HEAD
- FUTURE SIGNAL HEAD
- CCTV CAMERA

- INITIAL TIMINGS MAY REQUIRE FIELD ADJUSTMENT DURING CONSTRUCTION.
- ENTRY INTO PREEMPTION SHALL NOT VIOLATE MINIMUM GREEN OR PEDESTRIAN CLEARANCE INTERVALS.
- YELLOW AND ALL RED INTERVALS DURING PREEMPTION SHALL BE THE SAME VALUES USED DURING NORMAL CONTROLLER OPERATIONS.
- NORMAL OPERATION - GREEN RESTS ON PHASE 2 & 6 (NORTHBOUND AND SOUTHBOUND)

CONTROLLER NOTES

- THE MAJOR STREET IS RYE ROAD (SPEED LIMIT 45 MPH). THE MINOR STREET IS THE FIRE STATION (SPEED LIMIT NOT LISTED. SPEED LIMIT OF 25 MPH USED FOR CLEARANCE CALCULATIONS).
- FLASHING OPERATION: MOVEMENTS 2 AND 6 YELLOW, ALL OTHER MOVEMENTS RED.
- SEE CONDUIT SCHEMATIC SHEET FOR CONDUIT AND PULL BOX PAY ITEMS.



No.	REVISIONS	DATE	BY

© 2024 KIMLEY-HORN AND ASSOCIATES, INC.
200 SOUTH ORANGE AVENUE, SUITE 600, ORLANDO, FL 32801
PHONE: (407) 898-1511
WWW.KIMLEY-HORN.COM

KHA PROJECT 6115560
DATE AUGUST 2024
SCALE AS SHOWN
DESIGNED BY: JBO
DRAWN BY: JBO
CHECKED BY: NRH

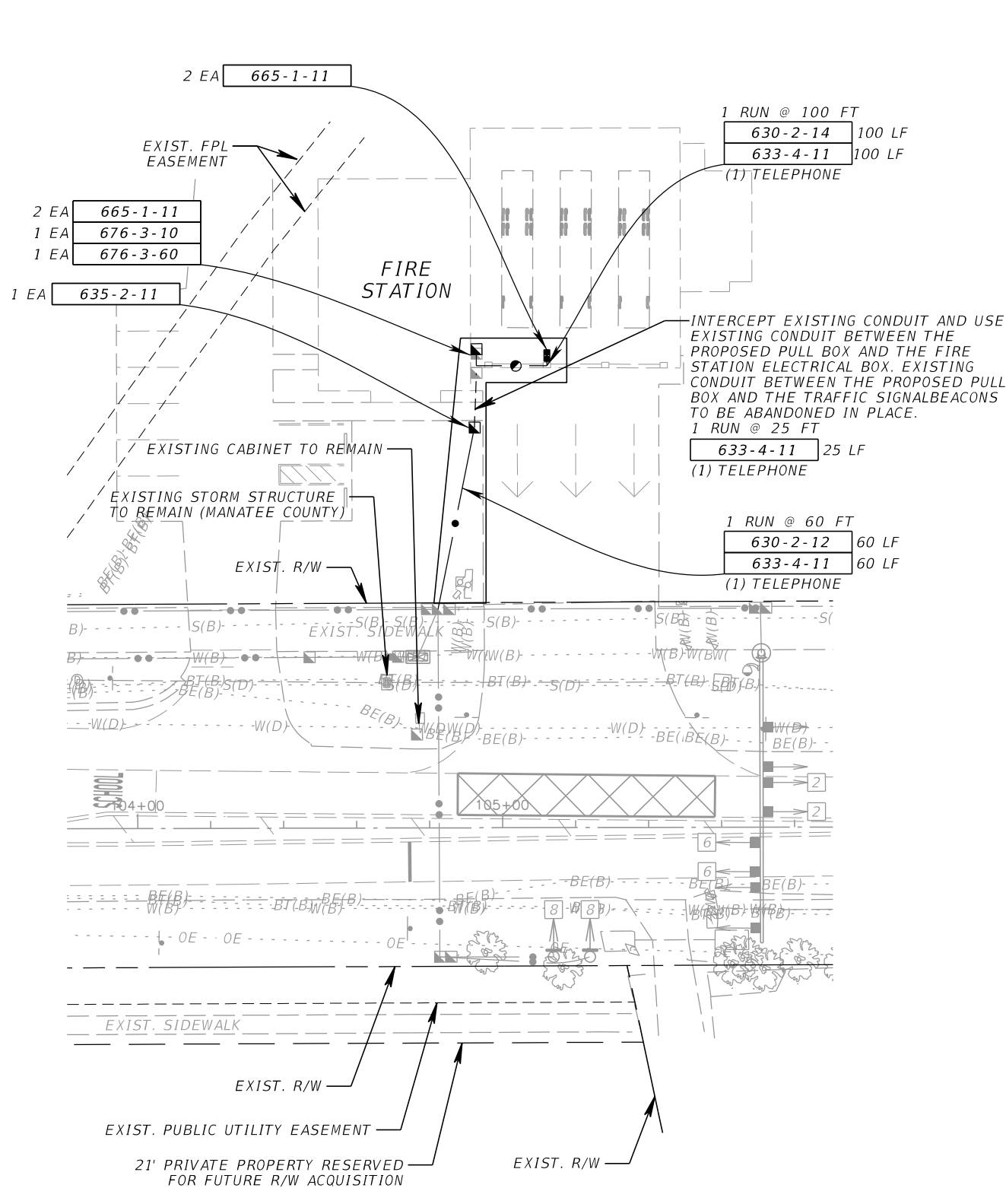
RYE ROAD AT FIRE RESCUE STATION 3
MANATEE COUNTY FL

LICENSED PROFESSIONAL
NICOLE R. HECK, P.E.
FL LICENSE NUMBER 84306
DATE:

SIGNALIZATION PLAN

SHEET NUMBER
T-9

THE OFFICIAL RECORD OF THIS SHEET IS THE ELECTRONIC FILE DIGITALLY SIGNED AND SEALED UNDER RULE 61G15-23.004, F.A.C.



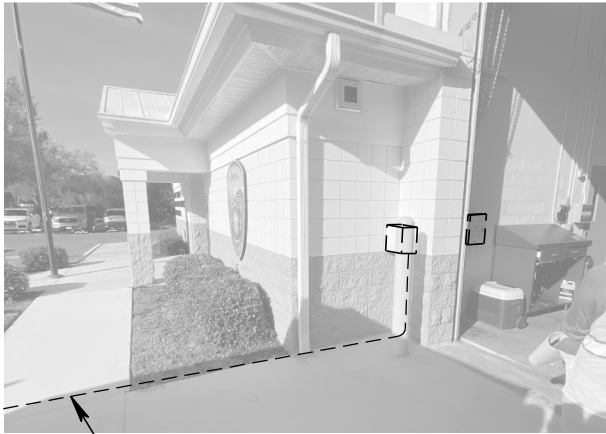
EXISTING ELECTRICAL BOX WITH CONNECTION TO THE EXTERIOR ELECTRICAL BOX TO BE REMOVED. EXISTING CONDUCTOR/TELEPHONE CABLE TO BE REMOVED AND REPLACED WITH PROPOSED CONDUCTOR/TELEPHONE CABLE.

MOUNT NEW CONDUIT WITH COUPLING TO ATTACH TO EXISTING CONDUIT AND EXTEND TO NEW CABINET

EXISTING ELECTRICAL BOX ON THE EXTERIOR WALL TO REMAIN IN USE

TWO PUSH BUTTONS

PROPOSED ELECTRICAL BOX WITH CONNECTION TO THE EXTERIOR ELECTRICAL BOX



NOTES

1. THE EMERGENCY SIGNAL PREEMPTION WILL OCCUR FROM A DEVICE ADDED WITHIN THE FIRE STATION.
2. FOR BOTH PUSH BUTTON ASSEMBLIES INSIDE THE FIRE STATION, EACH ASSEMBLY WILL HAVE TWO PUSH BUTTONS. ONE BUTTON WILL BE UTILIZED WHEN TRAVELING IN THE NORTHBOUND DIRECTION AND ONE PUSH BUTTON WILL BE UTILIZED FOR TRAVELING IN THE SOUTHBOUND DIRECTION. BUTTONS SHALL BE LABELED WITH ALUMINUM TAGS MOUNTED ABOVE EACH BUTTON, "NORTH" AND "SOUTH".
3. PUSH BUTTONS SHALL ACTIVATE PREEMPTION FOR:
SOUTHBOUND -> EMERGENCY SIGNAL AND GENE WITT ELEMENTARY INTERSECTION
NORTHBOUND -> EMERGENCY SIGNAL ONLY
4. INSTALL NEW ABOVE GROUND CONDUIT ALONG THE FACE OF THE WALL TO THE NEW PUSH BUTTONS.
5. PREEMPTION CABLE SHALL BE CONTINUOUS FROM CABINET CONNECTION TO PUSH BUTTON WITH NO SPLICES.

PUSH
BUTTON
FOR
TRAFFIC
SIGNAL

R10-4
(MODIFIED)
9" X 12"

No.	REVISIONS	DATE	BY

Kimley»Horn

© 2024 KIMLEY-HORN AND ASSOCIATES, INC.
200 SOUTH ORANGE AVENUE, SUITE 600, ORLANDO, FL 32801
PHONE: (407) 898-1511
WWW.KIMLEY-HORN.COM

KHA PROJECT 6115560
DATE AUGUST 2024
SCALE AS SHOWN
DESIGNED BY: JBO
DRAWN BY: JBO
CHECKED BY: NRH

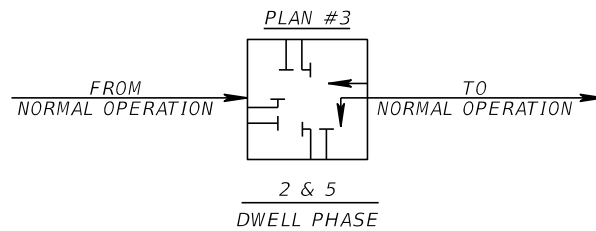
Manatee County
FLORIDA

RYE ROAD AT FIRE RESCUE STATION 3
MANATEE COUNTY
FL

LICENSED PROFESSIONAL
NICOLE R. HECK, P.E.
FL LICENSE NUMBER 84306

**FIRE STATION PREEMPTION
DETECTOR PLAN**

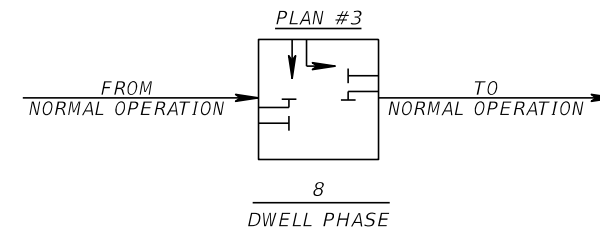
SHEET NUMBER
T-11



EMERGENCY VEHICLE PREEMPTION (RYE ROAD AT GENE WITT ELEMENTARY SCHOOL)						
PREEMPTION TIMING PLAN	1	2	3 (SB)	4	5	6
PRIORITY			6			
DELAY BEFORE PREEMPTION (SEC)			0			
MINIMUM GREEN BEFORE PREEMPTION (SEC)			*			
LOCK CALL			ON			
MAXIMUM PRESENCE (SEC)			120			
YELLOW CLEARANCE (SEC)			**			
RED CLEARANCE (SEC)			**			
DWELL PHASE(S)			2 & 5			
MINIMUM DWELL (SEC)			15			
YELLOW CLEARANCE (SEC)**			**			
RED CLEARANCE (SEC)**			**			
EXIT PHASES			2 & 6			

NOTES:

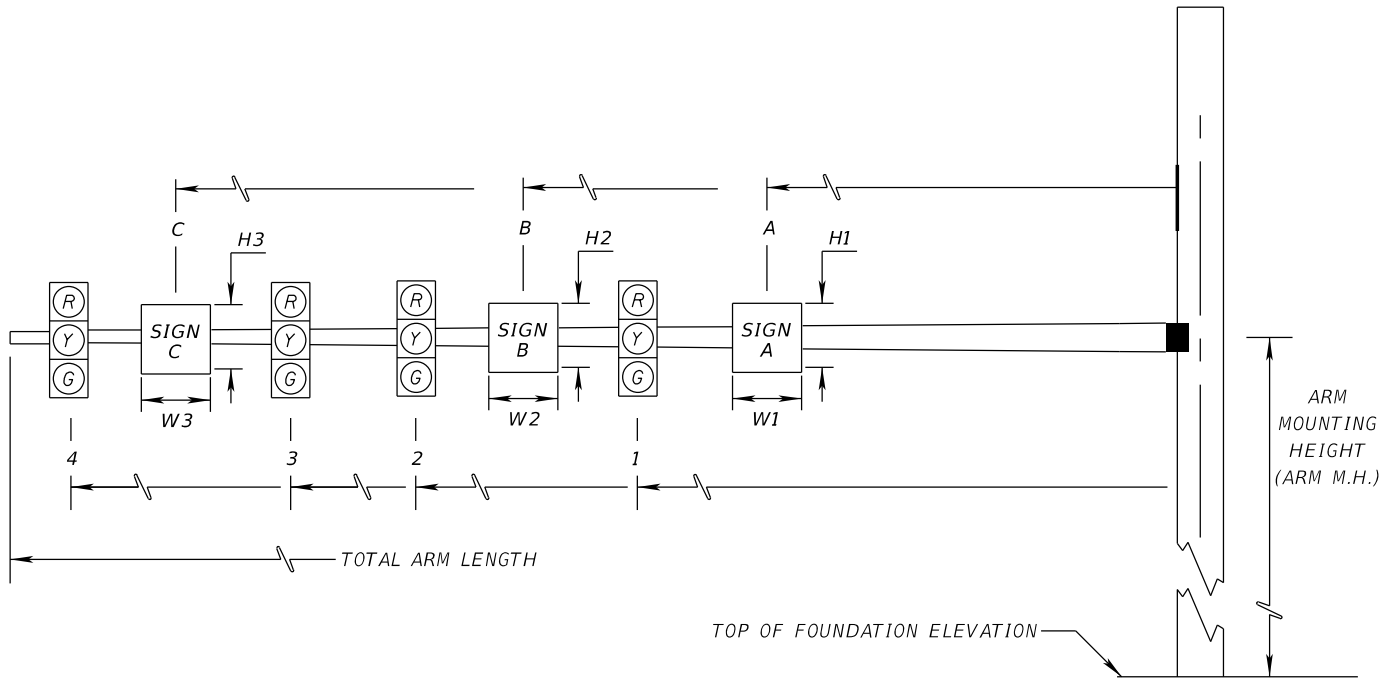
1. * ENTRY INTO PREEMPTION SHALL NOT VIOLATE MINIMUM GREEN OR PEDESTRIAN CLEARANCE INTERVALS
2. ** YELLOW AND ALL RED INTERVALS DURING PREEMPTION SHALL BE THE SAME VALUES USED DURING NORMAL CONTROLLER OPERATIONS.
3. THE MAJOR STREET IS RYE ROAD (SPEED LIMIT 45 MPH). THE MINOR STREET IS GENE WITT ELEMENTARY SCHOOL / RYE RESERVE (SPEED LIMIT NOT LISTED. SPEED LIMIT OF 25 MPH USED FOR CLEARANCE CALCULATIONS).



EMERGENCY VEHICLE PREEMPTION (RYE ROAD AT FIRE STATION 3)						
PREEMPTION TIMING PLAN	1	2	3(EB)	4	5	6
PRIORITY			6			
DELAY BEFORE PREEMPTION (SEC)			0			
MINIMUM GREEN BEFORE PREEMPTION (SEC)			*			
LOCK CALL			ON			
MAXIMUM PRESENCE (SEC)			120			
YELLOW CLEARANCE (SEC)			**			
RED CLEARANCE (SEC)			**			
DWELL PHASE(S)			8			
MINIMUM DWELL (SEC)			45			
YELLOW CLEARANCE (SEC)**			**			
RED CLEARANCE (SEC)**			**			
EXIT PHASES			2 & 6			

NOTES:

1. * ENTRY INTO PREEMPTION SHALL NOT VIOLATE MINIMUM GREEN OR PEDESTRIAN CLEARANCE INTERVALS
2. ** YELLOW AND ALL RED INTERVALS DURING PREEMPTION SHALL BE THE SAME VALUES USED DURING NORMAL CONTROLLER OPERATIONS.
3. THE MAJOR STREET IS RYE ROAD (SPEED LIMIT 45 MPH). THE MINOR STREET IS THE FIRE STATION (SPEED LIMIT NOT LISTED. SPEED LIMIT OF 25 MPH USED FOR CLEARANCE CALCULATIONS).



* DENOTES NUMBER OF SECTIONS IN SIGNAL HEAD ASSEMBLY

						SIGNAL DATA														SIGN DATA										DETECTOR		PAINT COLOR				
ID NO.	SHEET NO.	LOCATION BY STA. ; OFFSET	TOP OF FOUNDATION ELEVATION	RDWY ARM NO.	CROWN ELEV.	LUMIN-AIRE Y/N	TERM. COMP. Y/N	SIGNAL V/H	BACK PLATES Y/N	PED. SIGNAL Y/N	DISTANCE FROM POLE								TOTAL ARM LENGTH	ARM M.H.	ANGLE BETWEEN DUAL ARMS 90/270	LL	DISTANCE FROM POLE / HEIGHT AND WIDTH OF SIGN													
											1	*	2	*	3	*	4	*					5	*	A	H1	W1	B	H2					W2	C	H3
PROPOSED LOADING																																				
A	T-9	STA 105+71.0; 47.8' LT	23.6'	1	24.3'	N	Y	V	Y	N	36.0'	3	44.0'	3	52.5'	3	60.5'	3			78'	21.5'	-	-	40.0'	2'-0"	3'-0"	56.5'	2'-0"	3'-0"				5'	GALVANIZED	
				2																																
FUTURE (DESIGN) LOADING																																				
A	T-9	STA 105+71.0; 47.8' LT	23.6'	1	24.3'	N	Y	V	Y	N	22.0'	3	33.0'	3	65.0'	3	76.0'	3			78'	21.5'	-	-	18.0'	4'-0"	3'-0"	27.5'	2'-6"	3'-6"	70.5'	2'-6"	3'-6"	5', 31', 74'	GALVANIZED	
				2																																

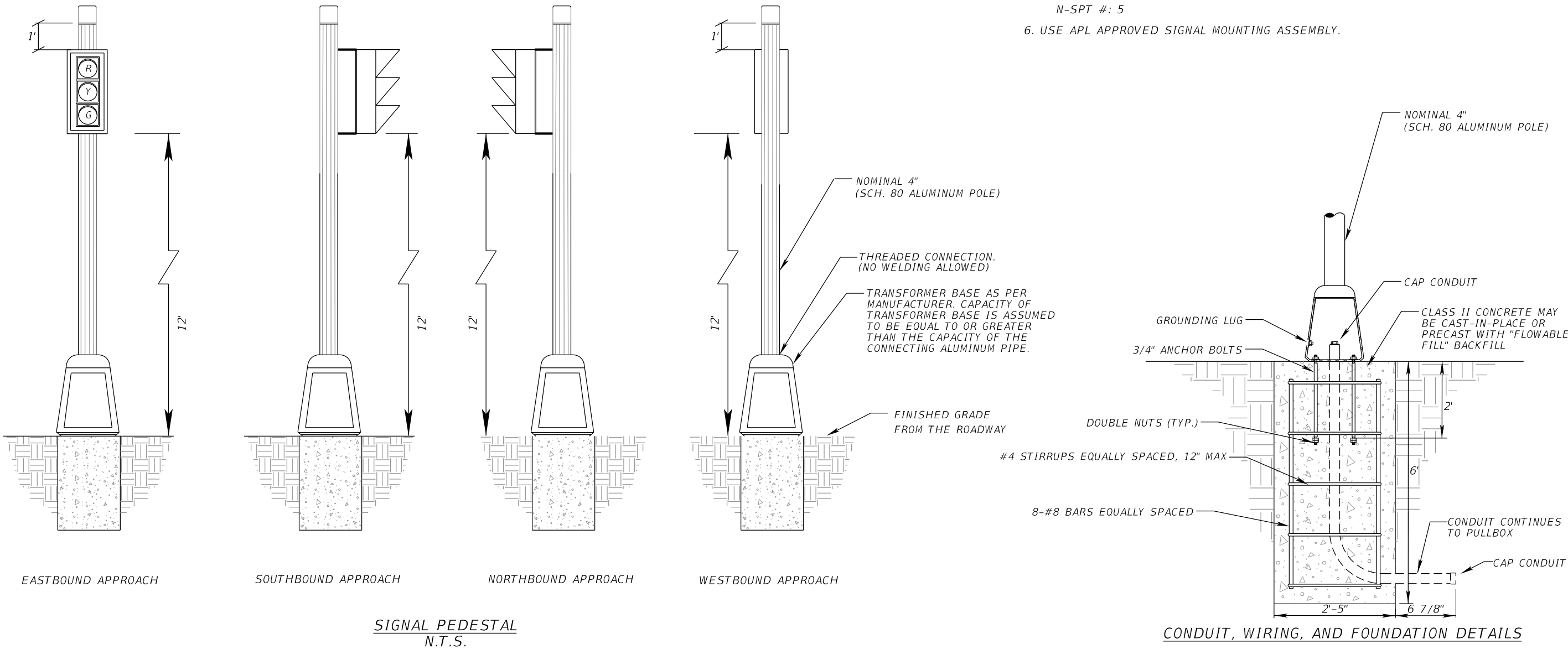
THE OFFICIAL RECORD OF THIS SHEET IS THE ELECTRONIC FILE DIGITALLY SIGNED AND SEALED UNDER RULE 61G15-23.004, F.A.C.

LOCATIONS:

STA 105+13.9; 35.4' RT
STA 105+23.9; 35.4' RT

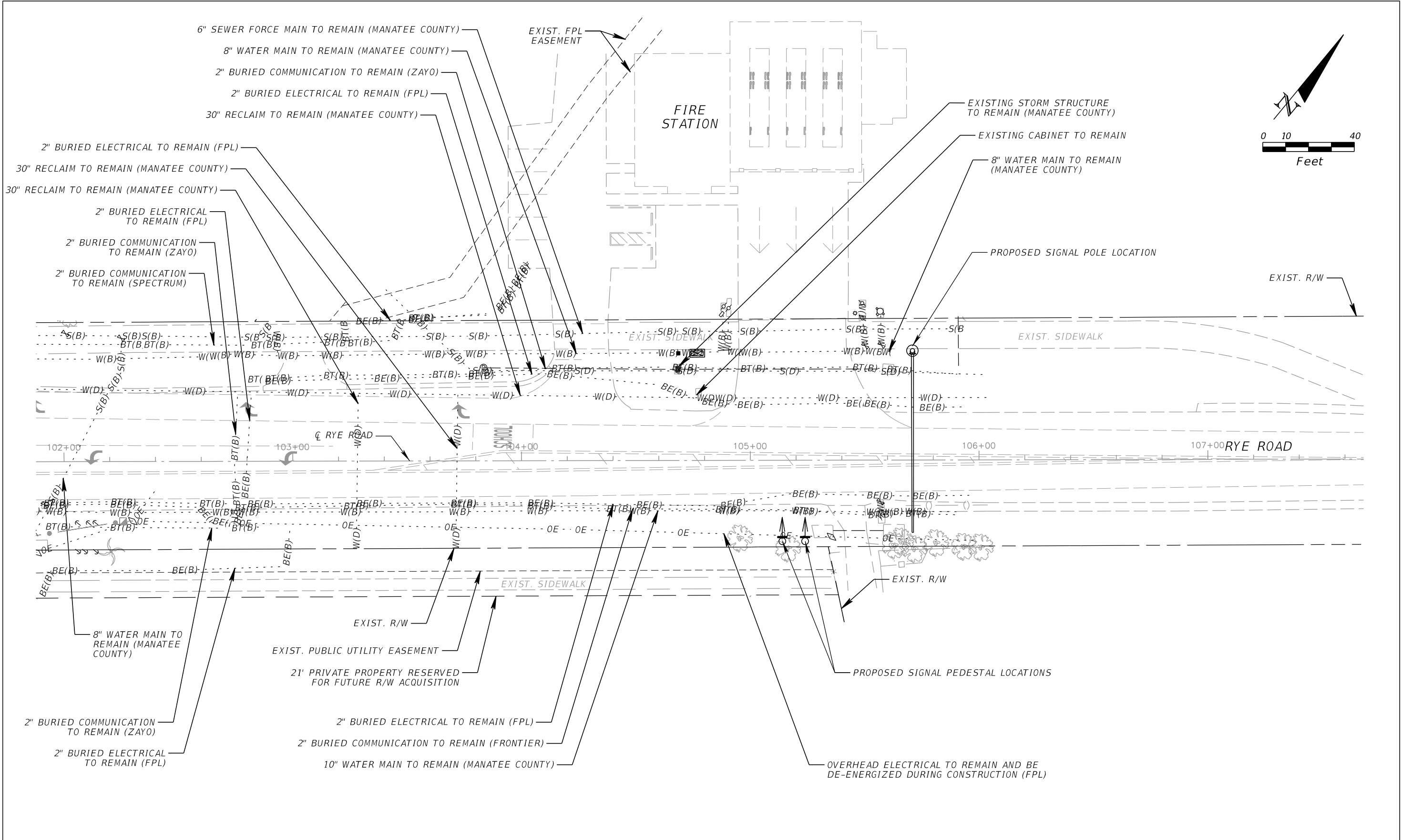
NOTES:


- 1. WORK THIS DETAIL WITH FDOT STANDARD PLANS INDICES 646-001, 700-120 AND SPECIFICATION 646.
- 2. ENSURE THAT THE LOWEST POINT ON PEDESTAL-MOUNTED SIGNAL HEADS IS 12 FEET ABOVE FINISHED GRADE OF THE ROADWAY
- 3. ENGAGE ALL THREADS ON THE TRANSFORMER BASE AND POST UNLESS THE ALUMINUM POST IS FULLY SEATED INTO BASE.
- 4. DESIGN WIND SPEED = 150 MPH (MANATEE COUNTY).
- 5. FOUNDATION ASSUMPTIONS AND VALUES USED IN DESIGN:
CLASSIFICATION: COHESIONLESS SOIL (SAND)
FRICTION ANGLE: 29°
EFFECTIVE SOIL DENSITY (SUBMERGED): 43 PCF
N-SPT #: 5
- 6. USE APL APPROVED SIGNAL MOUNTING ASSEMBLY.



				<div><div>Kimley»Horn</div><div>© 2024 KIMLEY-HORN AND ASSOCIATES, INC. 200 SOUTH ORANGE AVENUE, SUITE 600, ORLANDO, FL 32801 PHONE: (407) 898-1511 WWW.KIMLEY-HORN.COM</div></div>	<div><div>KHA PROJECT 6115560</div><div>DATE AUGUST 2024</div><div>SCALE AS SHOWN</div><div>DESIGNED BY: JBO</div><div>DRAWN BY: JBO</div><div>CHECKED BY: NRH</div></div>	<div><div></div><div>RYE ROAD AT FIRE RESCUE STATION 3</div><div>MANATEE COUNTY</div><div>FL</div></div>	<div>LICENSED PROFESSIONAL</div> <div>NICOLE R. HECK, P.E.</div> <div>FL LICENSE NUMBER 84306</div> <div>DATE:</div>	<div>PEDESTAL MOUNTED SIGNAL</div> <div>HEAD DETAIL</div>	<div>SHEET NUMBER</div> <div>T-15</div>		
No.	REVISIONS	DATE	BY								
josh.quinn8/8/2024 11:08:33 AM DefaultK:\ORL_TPTO\148400114_Gene Witt Elementary\148400114_signals\SPDTS03_PedestalDetail.dgn											

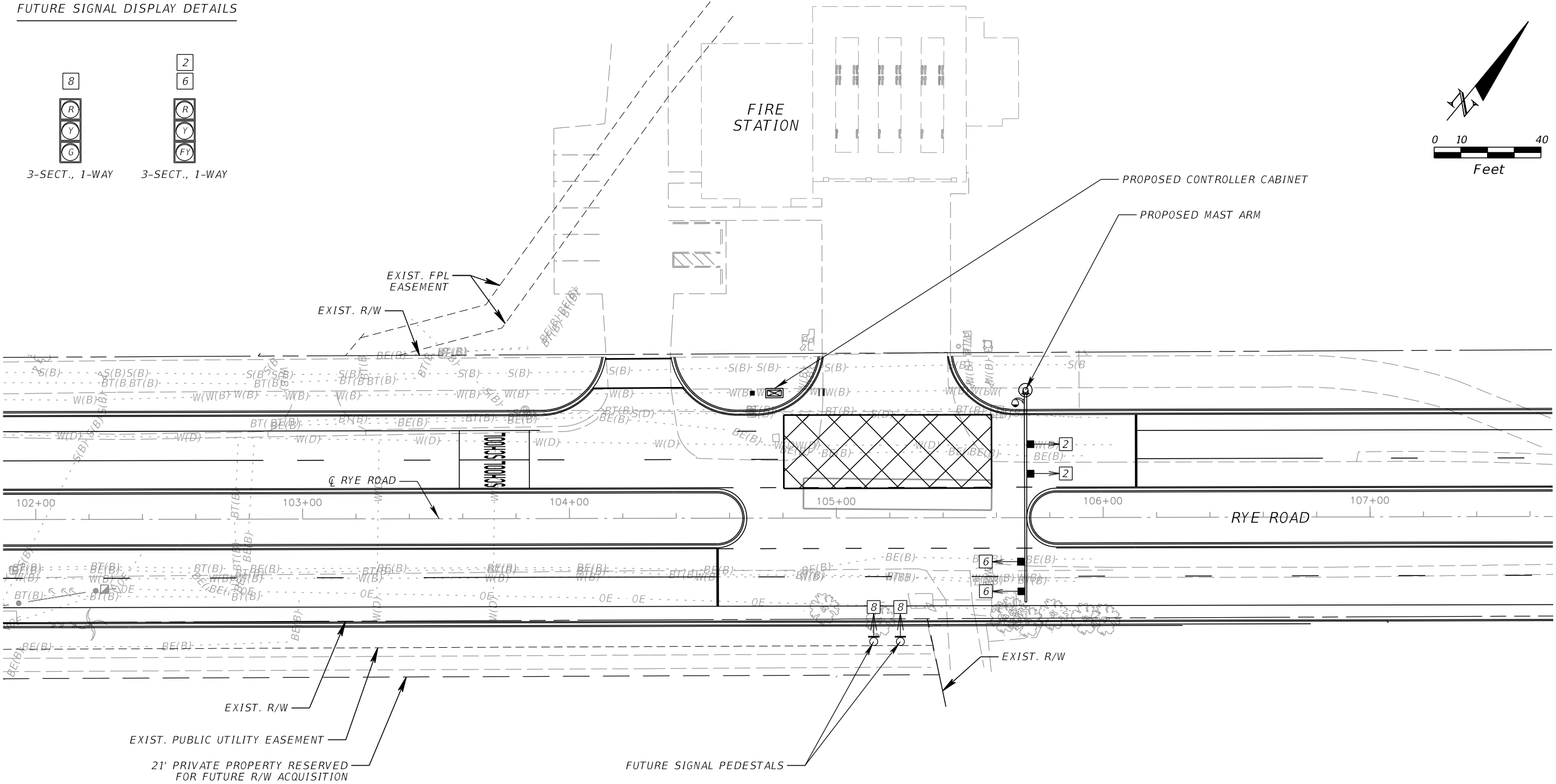
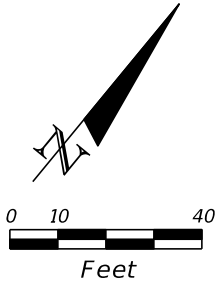
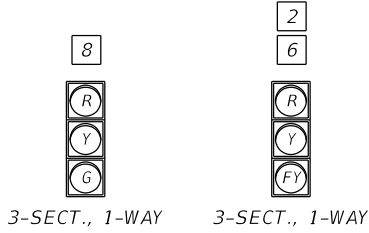
THE OFFICIAL RECORD OF THIS SHEET IS THE ELECTRONIC FILE DIGITALLY SIGNED AND SEALED UNDER RULE 61G15-23.004, F.A.C.



				<div>Kimley»Horn</div> <div>© 2024 KIMLEY-HORN AND ASSOCIATES, INC. 200 SOUTH ORANGE AVENUE, SUITE 600, ORLANDO, FL 32801 PHONE: (407) 898-1511 WWW.KIMLEY-HORN.COM</div>	<div>KHA PROJECT 6115560</div>	<div></div> <div>RYE ROAD AT FIRE RESCUE STATION 3</div> <div>MANATEE COUNTY</div>	<div>LICENSED PROFESSIONAL</div> <div>NICOLE R. HECK, P.E.</div> <div>FL LICENSE NUMBER 84306</div>	<div>UTILITY CONFLICT SHEET</div>	<div>SHEET NUMBER</div> <div>T-16</div>
			<div>DATE AUGUST 2024</div>						
			<div>SCALE AS SHOWN</div>						
			<div>DESIGNED BY: JBO</div>						
			<div>DRAWN BY: JBO</div>						
			<div>CHECKED BY: NRH</div>						
No.	REVISIONS	DATE	BY		8/8/2024 11:08:36 AM Default				
Josh.quinn				\\orlfp02\FL ORL02\ORL TPTO\148400114 Gene Witt Elementary\148400114\signals\SPDTSG04 UtilityConflicts.dgn					

THE OFFICIAL RECORD OF THIS SHEET IS THE ELECTRONIC FILE DIGITALLY SIGNED AND SEALED UNDER RULE 61G15-23.004, F.A.C.

FUTURE SIGNAL DISPLAY DETAILS



FOR REFERENCE PURPOSES ONLY

No.	REVISIONS	DATE	BY

© 2024 KIMLEY-HORN AND ASSOCIATES, INC.
200 SOUTH ORANGE AVENUE, SUITE 600, ORLANDO, FL 32801
PHONE: (407) 898-1511
WWW.KIMLEY-HORN.COM

KHA PROJECT
6115560
DATE
AUGUST 2024
SCALE AS SHOWN
DESIGNED BY: JBO
DRAWN BY: JBO
CHECKED BY: NRH

RYE ROAD AT FIRE RESCUE STATION 3
MANATEE COUNTY
FL

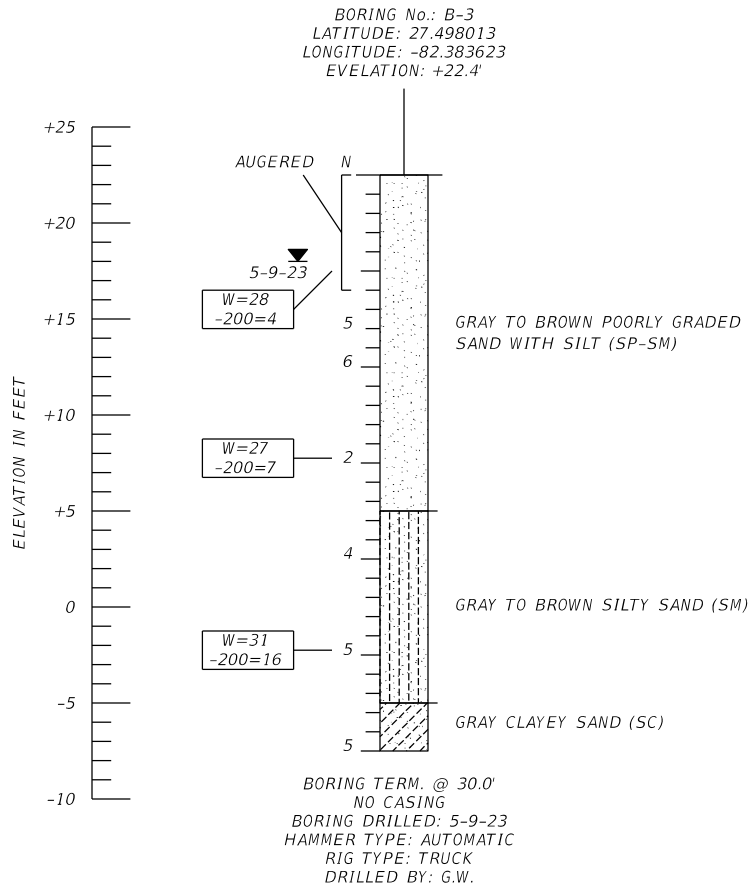
LICENSED PROFESSIONAL
NICOLE R. HECK, P.E.
FL LICENSE NUMBER 84306
DATE:

FUTURE SIGNALIZATION
CONCEPT

SHEET NUMBER
T-18

THE OFFICIAL RECORD OF THIS SHEET IS THE ELECTRONIC FILE DIGITALLY SIGNED AND SEALED UNDER RULE 61G15-23.004, F.A.C.

4/18/2024 2:00:50 PM agschirfano
N:\CADD\FDOT\Projects\Q-Works\HC235038\geotechnical\SPTBS601.dgn

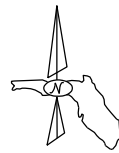
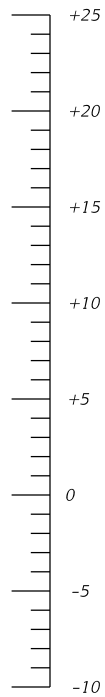
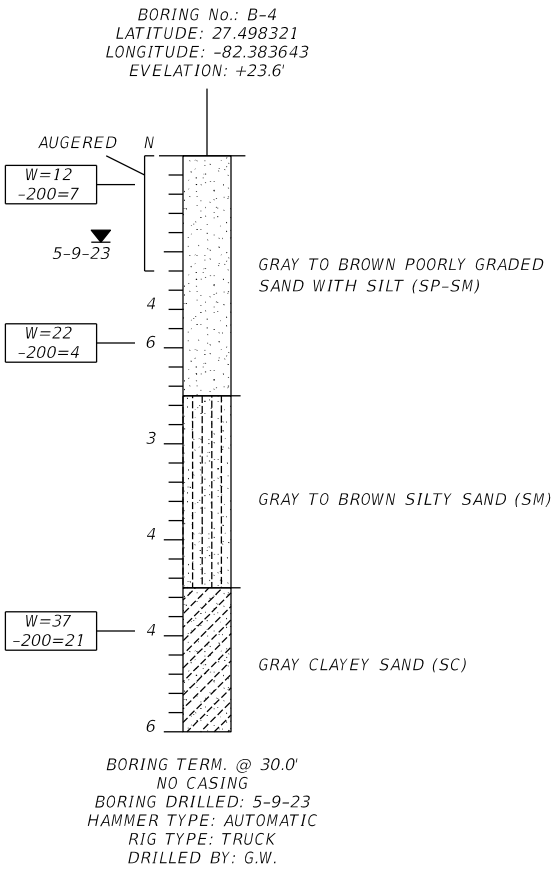


SOIL DESIGN PARAMETERS FOR B-3 (NE)

DEPTH (FEET)	SOIL TYPE	SOIL UNIT WEIGHT (pcf)		SOIL FRICTION ANGLE (φ) (DEGREES)	COHESION (psf)	ULTIMATE SHEAR STRENGTH (psf)	EARTH PRESSURE COEFFICIENT		SOIL MODULUS, k (pci)
		TOTAL (γ) (ABOVE GWT)	EFFECTIVE (γ')				ACTIVE	PASSIVE	
0-6	SAND	105	43	29	0	0	0.347	2.88	10
6-30	SAND	105	43	29	0	0	0.347	2.88	10
AVERAGE		105	43	29	0	0	0.347	2.88	10

SOIL DESIGN PARAMETERS FOR B-4 (NW)

DEPTH (FEET)	SOIL TYPE	SOIL UNIT WEIGHT (pcf)		SOIL FRICTION ANGLE (φ) (DEGREES)	COHESION (psf)	ULTIMATE SHEAR STRENGTH (psf)	EARTH PRESSURE COEFFICIENT		SOIL MODULUS, k (pci)
		TOTAL (γ) (ABOVE GWT)	EFFECTIVE (γ')				ACTIVE	PASSIVE	
0-6	SAND	105	43	29	0	0	0.347	2.88	10
6-30	SAND	105	43	29	0	0	0.347	2.88	10
AVERAGE		105	43	29	0	0	0.347	2.88	10



LEGEND

	SAND		CLAYEY SAND
	SILTY SAND		
(SP)	UNIFIED SOIL CLASSIFICATION GROUP SYMBOL		
5-9-23	ENCOUNTERED GROUNDWATER LEVEL (DATE OF READING)		
W=0 -200=0	NATURAL MOISTURE CONTENT (%) FINES PASSING No. 200 SIEVE (%)		
N	STANDARD PENETRATION RESISTANCE IN BLOWS PER FOOT UNLESS OTHERWISE NOTED		

AUTOMATIC HAMMER

STANDARD PENETRATION TEST DATA

SPOON INSIDE DIA.	1 3/8 in.
SPOON OUTSIDE DIA.	2 in.
ASTM STANDARD DROP AUTOMATIC HAMMER	
AVG. HAMMER DROP	30 in.
HAMMER WEIGHT	140 lbs.

GRANULAR MATERIALS

RELATIVE DENSITY	SPT (BLOWS/FOOT)
VERY LOOSE	LESS THAN 3
LOOSE	3-8
MEDIUM DENSE	8-24
DENSE	24-40
VERY DENSE	GREATER THAN 40

SILTS AND CLAYS

CONSISTENCY	SPT (BLOWS/FOOT)
VERY SOFT	LESS THAN 1
SOFT	1-3
FIRM	3-6
STIFF	6-12
VERY STIFF	12-24
HARD	GREATER THAN 24

NOTES:

- LAYER BOUNDARIES ARE APPROXIMATE AND REPRESENT SOIL LAYERS AT EACH TEST HOLE LOCATION ONLY. SUBSURFACE VARIATIONS BETWEEN BORINGS SHOULD BE ANTICIPATED.
- LATITUDE AND LONGITUDE AT BORING LOCATIONS IS BASED ON HANDHELD GPS DEVICE.

LEGEND

	APPROXIMATE LOCATION OF STANDARD PENETRATION TEST BORING
--	--



REVISIONS						ENGINEER OF RECORD			DRAWN BY:	MANATEE COUNTY PUBLIC WORKS			SHEET TITLE:	REF. DWG. NO.	
DATE	BY	DESCRIPTION		DATE	BY	DESCRIPTION		AS 4-18-24	CHECKED BY:				ROAD NO.	COUNTY	FINANCIAL PROJECT ID
								JAMES JACKSON, P.E. LICENSE NUMBER 77733 TERRACON 8260 VICO COURT SARASOTA, FLORIDA 34240		JJ 4-18-24	RYE RD	MANATEE		REPORT OF CORE BORINGS FOR SIGNAL POLES	T-19
								DESIGNED BY:		RYE ROAD SIGNALS					
								CHECKED BY:		RYE ROAD NEAR WITT ELEMENTARY					
								XXX MM-YY		XXX MM-YY					

LIGHTING GENERAL NOTES

1. THE LOCATION(S) OF THE UTILITIES SHOWN IN THE PLANS (INCLUDING THOSE DESIGNATED Vv, Vh, AND Vvh) ARE BASED ON LIMITED INVESTIGATION TECHNIQUES AND SHOULD BE CONSIDERED APPROXIMATE ONLY. THE VERIFIED LOCATIONS/ELEVATIONS APPLY ONLY AT THE POINTS SHOWN. INTERPOLATIONS BETWEEN THESE POINTS HAVE NOT BEEN VERIFIED.

2. LIST OF UTILITY OWNERS:

CHARTER COMMUNICATIONS	THOMAS MUMEA	941-737-0003
FLORIDA POWER & LIGHT	BRIAN GARVER	941-723-4442
FRONTIER COMMUNICATIONS	DENISE HUTTON	941-504-9652
MANATEE COUNTY TRANSPORTATION	KATHY MCMAHON	941-792-8811
MANATEE COUNTY UTILITY OPERATIONS	KATHY MCMAHON	941-792-8811
PEACE RIVER ELECTRIC	PAUL ROBERTS	863-767-4650
TECO PEOPLES GAS	JOAN DOMNING	813-275-3783
ZAYO GROUP	HENRY KLOBUCAR	406-496-6510

3. NO LIGHTING IMPROVEMENTS SHOULD BE INSTALLED, ADJUSTED, OR REMOVED OUTSIDE OF COUNTY R/W OR EXISTING/PROPOSED PERMANENT EASEMENTS.
4. ALL LOCATIONS WHERE UNDERGROUND UTILITIES ARE CLOSE TO LIGHT POLE FOUNDATION, CONTRACTOR SHALL HAND DIG THE FIRST 48 INCHES OF DEPTH FOR THE POLE FOUNDATION.
5. THESE PLANS REFLECT CONDITIONS KNOWN DURING PLAN DEVELOPMENT. IN THE EVENT ACTUAL PHYSICAL CONDITIONS PREVENT THE APPLICATION OR THE PROGRESSION OF ANY WORK SPECIFIED IN THESE PLANS, THE CONTRACTOR SHALL NOTIFY THE ENGINEER IMMEDIATELY PRIOR TO ANY FURTHER WORK ACTIVITY.
6. THE LOCATIONS AND OFFSETS OF THE POLES, CONDUIT, AND PULLBOXES ARE BASED ON INFORMATION KNOWN AT THE TIME OF DESIGN AND MAY BE SHIFTED TO ACCOMMODATE LOCAL CONDITIONS AND EXISTING UTILITY LOCATIONS. ENGINEER APPROVAL IS REQUIRED FOR POLE ADJUSTMENTS GREATER THAN 5' IN ANY DIRECTION.

*FDOT SIGNALIZED INTERSECTION & ROUNDABOUT LIGHTING DESIGN
CRITERIA (ISOLATED LIGHTING)*

AVERAGE INITIAL INTENSITY: 1.0 - 1.5 H.F.C.
1.0 - 1.5 V.F.C.

UNIFORMITY RATIO AVG. / MIN.: 4 : 1 OR LESS**
UNIFORMITY RATIO MAX. / MIN.: 10 : 1 OR LESS**

****ILLUMINATION UNIFORMITY RATIOS DO NOT APPLY TO V.F.C.**

[illegible]

LIGHTING LEGEND

FAM SETTING
NUMBER

GE EVOLVE LED ERL2 SERIES 3000K, 252W, PHOTOMETRIC CURVE NO. ERL2_31D530, SEE POLE DATA TABLE FOR IES FILE AND LIGHT DISTRIBUTION WIRED FOR 120V OPERATION

AVAILABLE WITH FIELD ADJUSTABLE MODULE (FAM), SEE PRODUCT SPECIFICATION SHEET. SEE PLANS FOR POSITION SETTINGS. FAM SETTINGS ARE AS FOLLOWS:

1. FAM-8 = 25,245 LUMENS (85%)

PROPOSED LOAD CENTER

2" OPEN TRENCH CONDUIT

2" DIRECTIONAL BORE CONDUIT

PROPOSED LOCATION OF 13" X 24" LIGHTING PULL BOX

THE OFFICIAL RECORD OF THIS SHEET IS THE ELECTRONIC FILE DIGITALLY SIGNED AND SEALED UNDER RULE 61G15-23.004, F.A.C.

POLE DATA															
POLE NO.	CIRCUIT	STATION	POLE OFFSET	SIDE	POLE SETBACK*	POLE OWNER AND MAINTAINING AGENCY	POLE TYPE	LUMINAIRE WATTAGE**	LUMINAIRE OUTPUT**	MOUNTING HEIGHT (FT)	ARM LENGTH (FT)	LUMINAIRE MODEL	IES FILE	DISTRIBUTION TYPE	PAY ITEM
01	A-1	99+91.6	42.9'	LT	11.8'	MANATEE COUNTY	STANDARD ALUMINUM	252	29,700	40	10	GE EVOLVE	ERL2_31D530	TYPE III (FWT)	715-61-321
02	A-1	100+71.2	59.2'	LT	11.2'	MANATEE COUNTY	STANDARD ALUMINUM	252	29,700	40	10	GE EVOLVE	ERL2_31D530	TYPE III (FWT)	715-61-321
03	A-1	101+62.4	50.7'	RT	7.5'	MANATEE COUNTY	STANDARD ALUMINUM	252	29,700	40	10	GE EVOLVE	ERL2_31D530	TYPE III (FWT)	715-61-321

* HORIZONTAL DISTANCE FROM THE EDGE OF THE TRAVEL LANE/AUXILIARY LANE TO THE POLE
** REFER TO LIGHTING LEGEND AND LUMINAIRE SPECIFICATION SHEET FOR FIELD ADJUSTABLE MODULE (FAM) POSITION SETTINGS

No.

REVISIONS

DATE

BY

Kimley»Horn

© 2024 KIMLEY-HORN AND ASSOCIATES, INC.
200 SOUTH ORANGE AVENUE, SUITE 600, ORLANDO, FL 32801
PHONE: (407) 898-1511
WWW.KIMLEY-HORN.COM

KHA PROJECT
6115560


DATE
AUGUST 2024

SCALE AS SHOWN

DESIGNED BY: MKZ

DRAWN BY: MKZ

CHECKED BY: TJP



RYE ROAD AT FIRE RESCUE STATION 3
MANATEE COUNTY

LICENSED PROFESSIONAL

TIFFANY J. PARKER
DOS SANTOS, P.E.
FL LICENSE NUMBER
87920

DATE:

SHEET NUMBER

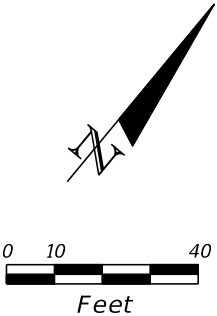
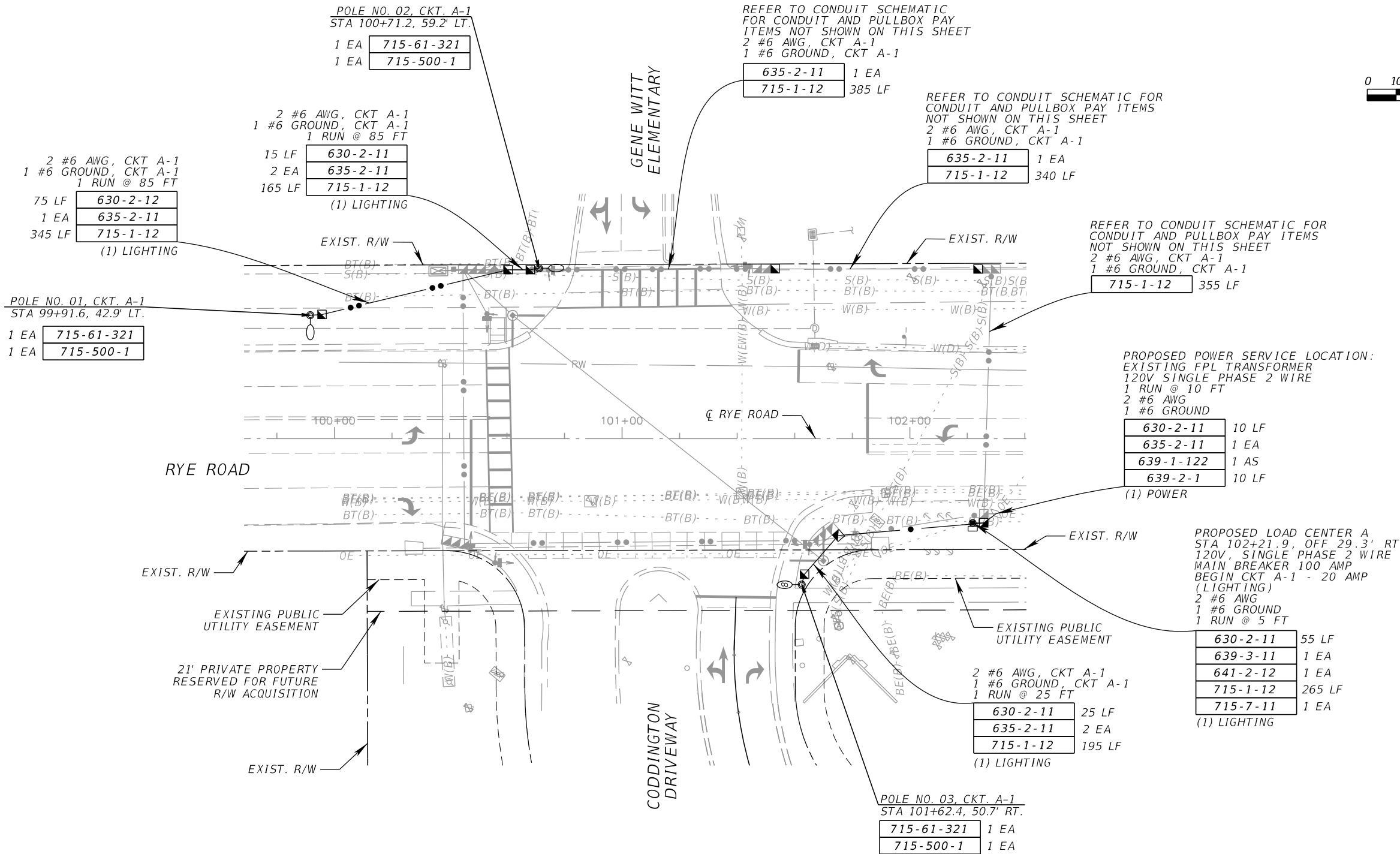
L-3

FL

DATE:

K:\ORL_TPTO\148400114_Gene Witt Elementary\148400114\lighting\PLDTLT02.dgn

THE OFFICIAL RECORD OF THIS SHEET IS THE ELECTRONIC FILE DIGITALLY SIGNED AND SEALED UNDER RULE 61G15-23.004, F.A.C.



No.	REVISIONS	DATE	BY

Kimley»Horn
© 2024 KIMLEY-HORN AND ASSOCIATES, INC.
200 SOUTH ORANGE AVENUE, SUITE 600, ORLANDO, FL 32801
PHONE: (407) 898-1511
WWW.KIMLEY-HORN.COM

KHA PROJECT
6115560
DATE
AUGUST 2024
SCALE AS SHOWN
DESIGNED BY: MKZ
DRAWN BY: MKZ
CHECKED BY: TJP

Manatee County
FLORIDA

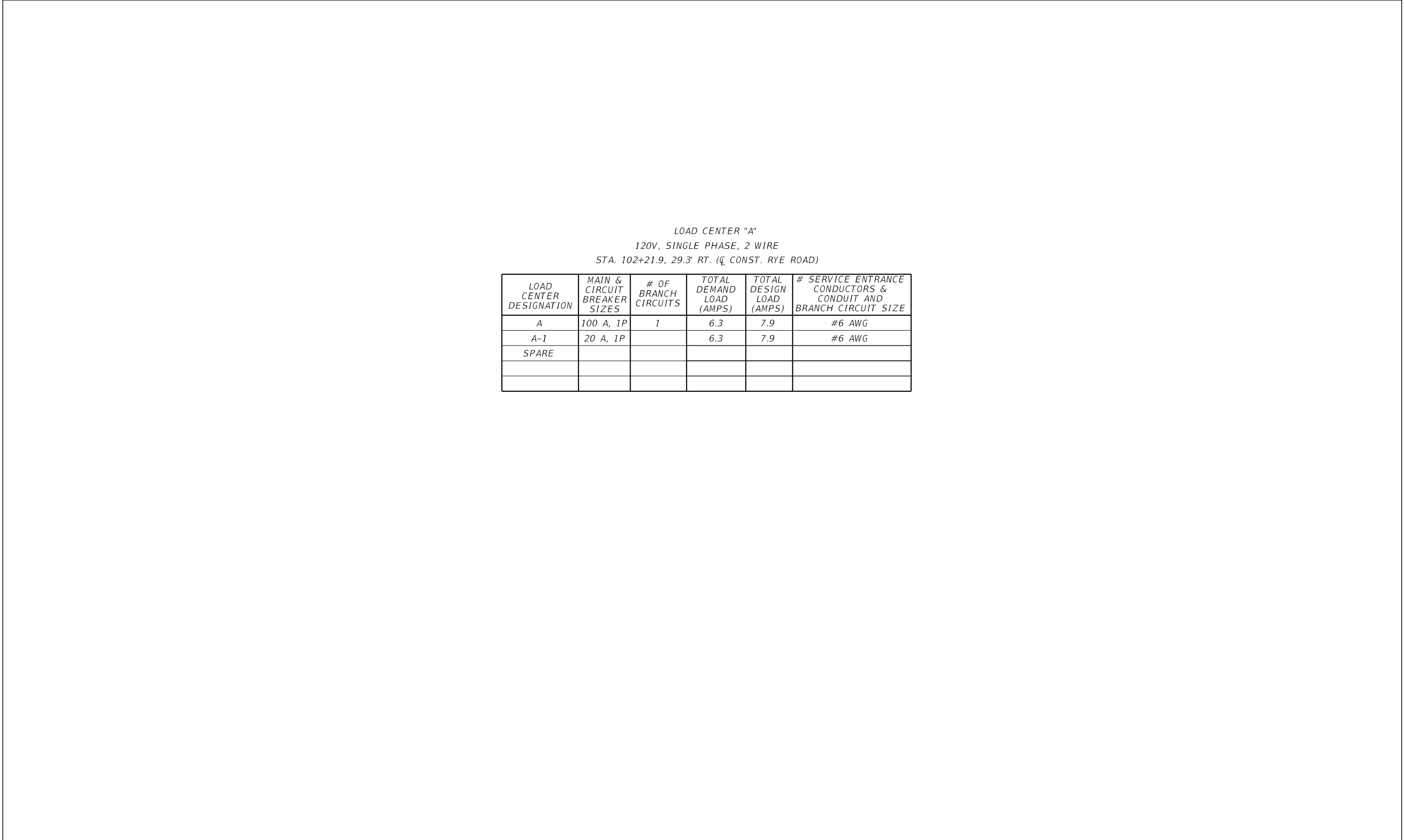
RYE ROAD AT FIRE RESCUE STATION 3
MANATEE COUNTY

LICENSED PROFESSIONAL
TIFFANY J. PARKER
DOS SANTOS, P.E.
FL LICENSE NUMBER
87920

LIGHTING PLAN

SHEET NUMBER
L-4

THE OFFICIAL RECORD OF THIS SHEET IS THE ELECTRONIC FILE DIGITALLY SIGNED AND SEALED UNDER RULE 61G15-23.004, F.A.C.



LOAD CENTER "A"
120V, SINGLE PHASE, 2 WIRE
STA. 102+21.9, 29.3' RT. (℄ CONST. RYE ROAD)

LOAD CENTER DESIGNATION	MAIN & CIRCUIT BREAKER SIZES	# OF BRANCH CIRCUITS	TOTAL DEMAND LOAD (AMPS)	TOTAL DESIGN LOAD (AMPS)	# SERVICE ENTRANCE CONDUCTORS & CONDUIT AND BRANCH CIRCUIT SIZE
A	100 A, 1P	1	6.3	7.9	#6 AWG
A-1	20 A, 1P		6.3	7.9	#6 AWG
SPARE					

THE OFFICIAL RECORD OF THIS SHEET IS THE ELECTRONIC FILE DIGITALLY SIGNED AND SEALED UNDER RULE 61G15-23.004, F.A.C.