

MATCH LINE - SEE SHEET C-2

| NO. | DESCRIPTION | BY | DATE |
|-----|-------------------------------------|-----|---------|
| A | REVISED BEND CALL FROM 22.5° TO 45° | ALS | 3/12/14 |

**SEWRF
DEDICATED REJECT LINE**



MANATEE COUNTY
DEPARTMENT OF PUBLIC WORKS
UTILITIES DEPARTMENT
4410 66th Street West Bradenton, Florida 34210
(941) 792-8811



**Cardno
TBE**
380 Park Place Blvd., Suite 300, Clearwater, Florida, 33759
www.cardnotbe.com - 727.531.3505
Certificate of Authorization No. 3843

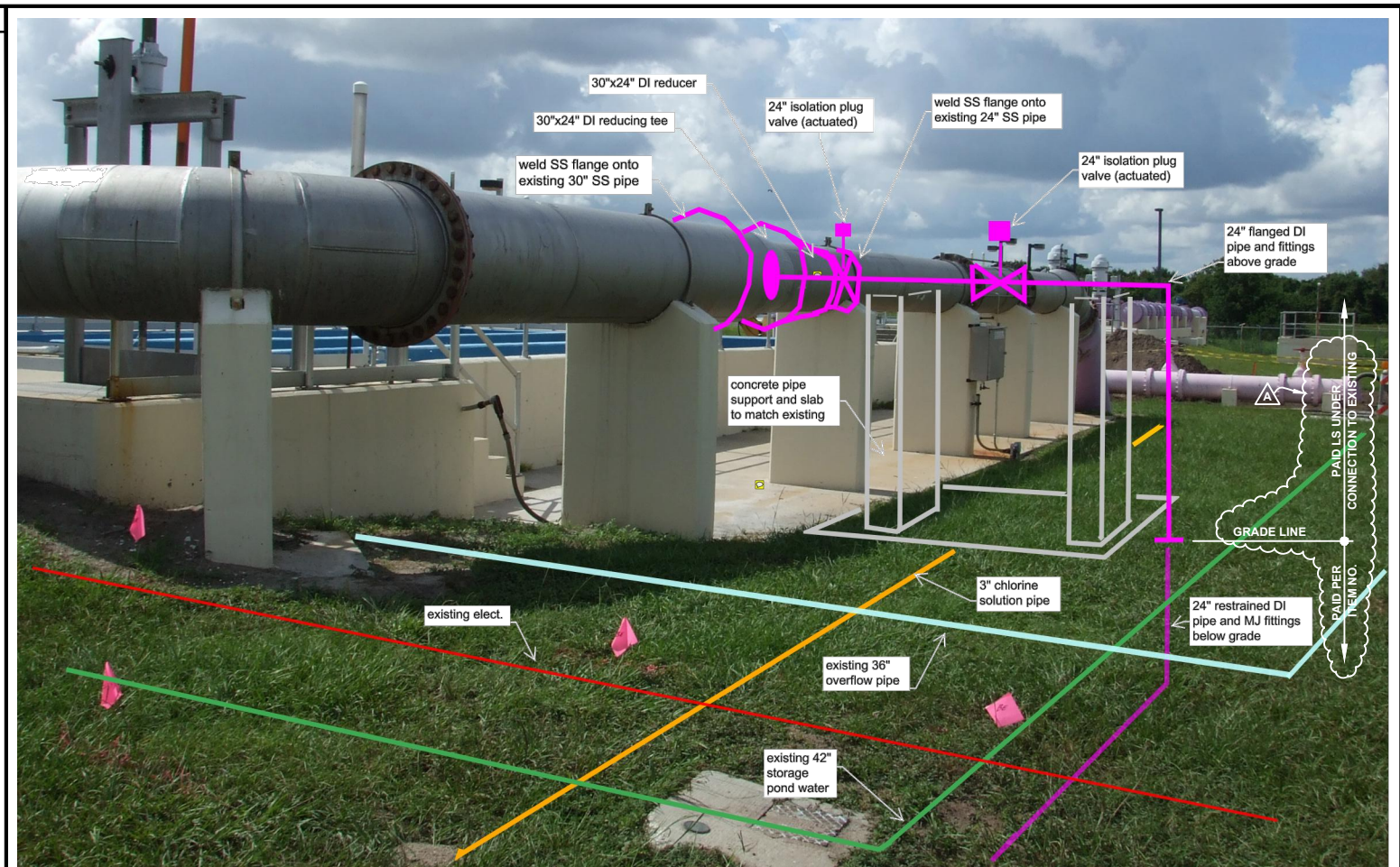
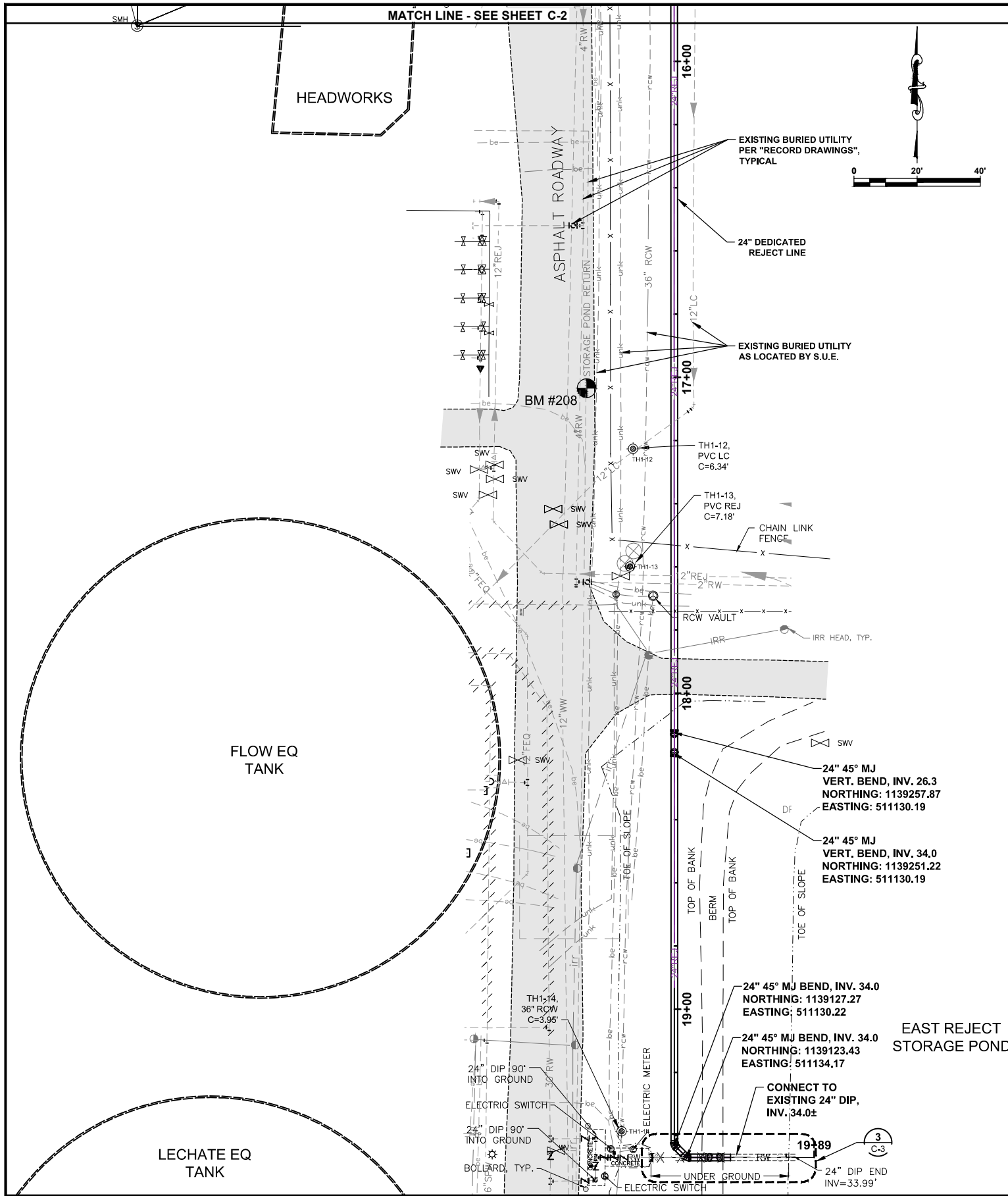
DAVID A. O'CONNOR, PE
LIC. NO.: 56803

DESIGNED _____
DRAWN _____
O.C. _____
APPROVED _____

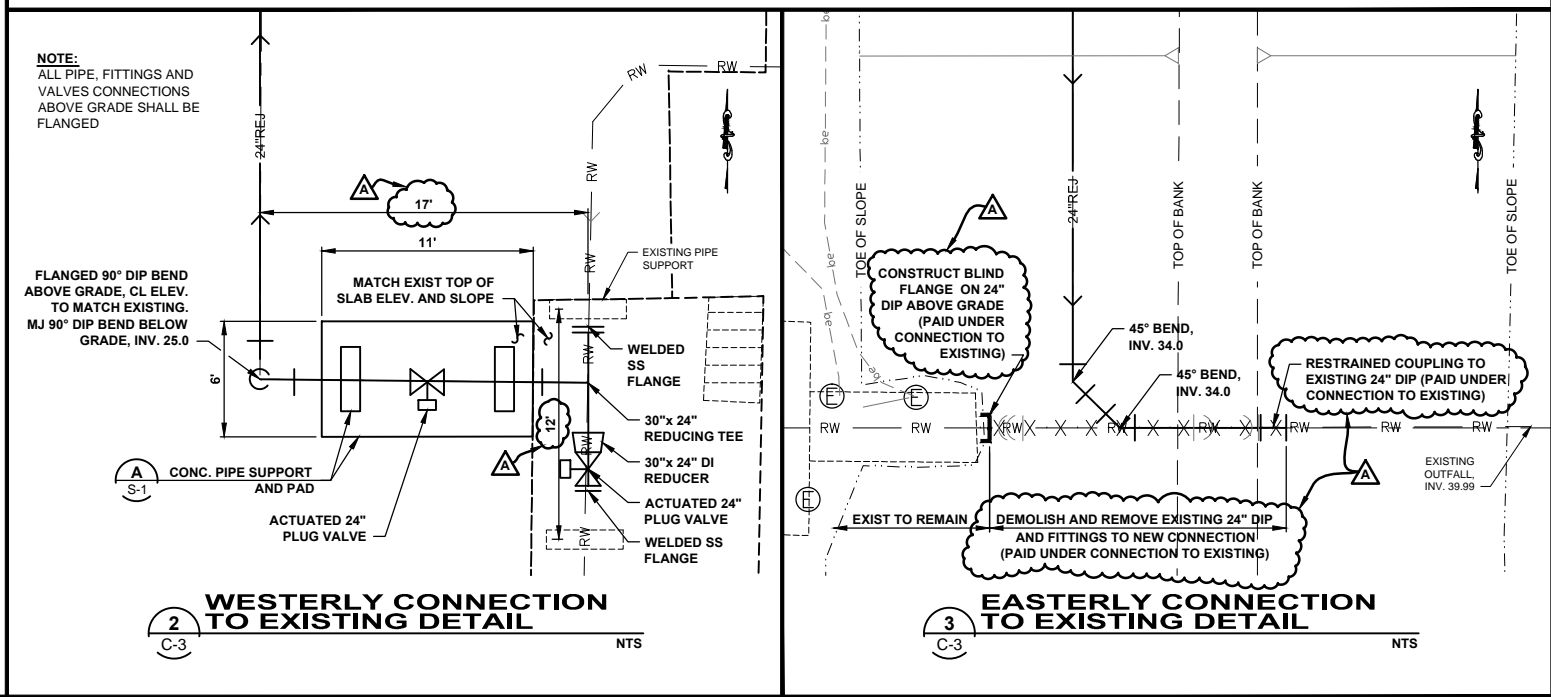
YARD PIPING (1)

PROJECT NO:
00193-009-01
DATE:
NOVEMBER 2013
SHEET NO:
C-1

FILE: J:\00193\00193009\01\ACAD\dwg\Sheets\YARD PIPING.dwg LAST SAVED: Wed, 03/12/14 5:06p PLOTTED: Wed, 03/12/14 5:13p BY: alan.schaller




1 WESTERLY CONNECTION TO EXISTING
NTS



| | | | |
|-----|--|-----|---------|
| NO. | DESCRIPTION | BY | DATE |
| A | ADD LIMITS OF PAY FOR CONNECTIONS; ADD MISC. DIM | ALS | 3/12/14 |

**SEWRF
DEDICATED REJECT LINE**


MANATEE COUNTY
 DEPARTMENT OF PUBLIC WORKS
 UTILITIES DEPARTMENT
 4410 66th Street West Bradenton, Florida 34210
 (941) 792-8811


**Cardno
TBE**
 380 Park Place Blvd., Suite 300, Clearwater, Florida, 33759
 www.cardnotbe.com - 727.531.3505
 Certificate of Authorization No. 3843

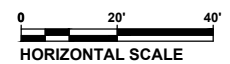
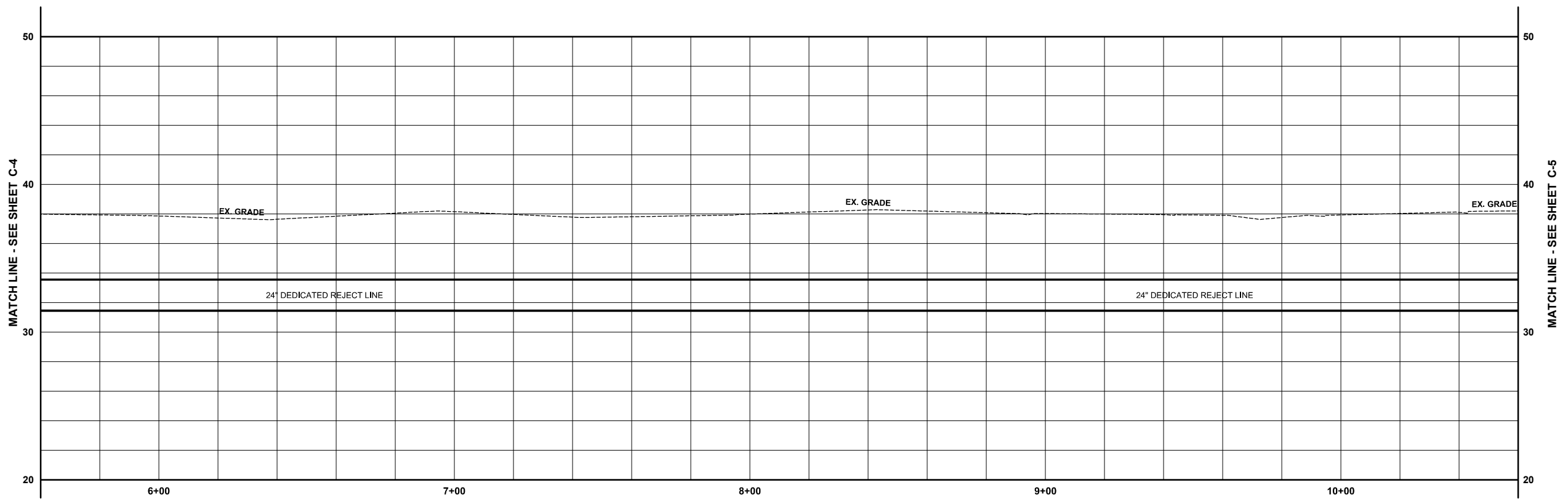
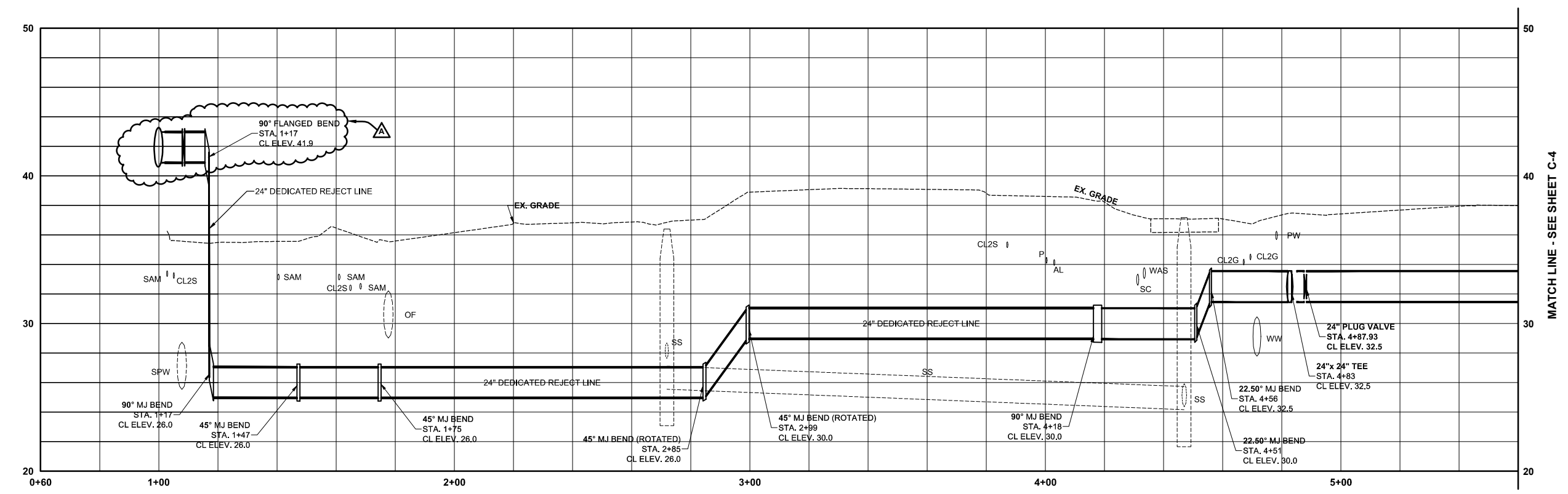
DAVID A. O'CONNOR, PE
LIC. NO.: 56803

YARD PIPING (3)

| | |
|----------|-----|
| DESIGNED | DOC |
| DRAWN | ALS |
| C.C. | |
| APPROVED | |

PROJECT NO: 00193-009-01
DATE: NOVEMBER 2013
SHEET NO: **C-3**

FILE: J:\00193\00193009\01ACAD\dwg\Sheets\YARD PIPING.dwg LAST SAVED: Wed, 03/12/14 5:14p BY: alan.schaller



| | | | |
|-----|--|-----|---------|
| NO. | DESCRIPTION | BY | DATE |
| A | REVISED FITTING FROM MJ TO FLANGED END | ALS | 3/12/14 |

**SEWRF
DEDICATED REJECT LINE**



DESIGNED _____
 DRAWN _____
 O.C. _____
 APPROVED _____
 DAVID A. O'CONNOR, PE DATE
 LIC. NO.: 56803

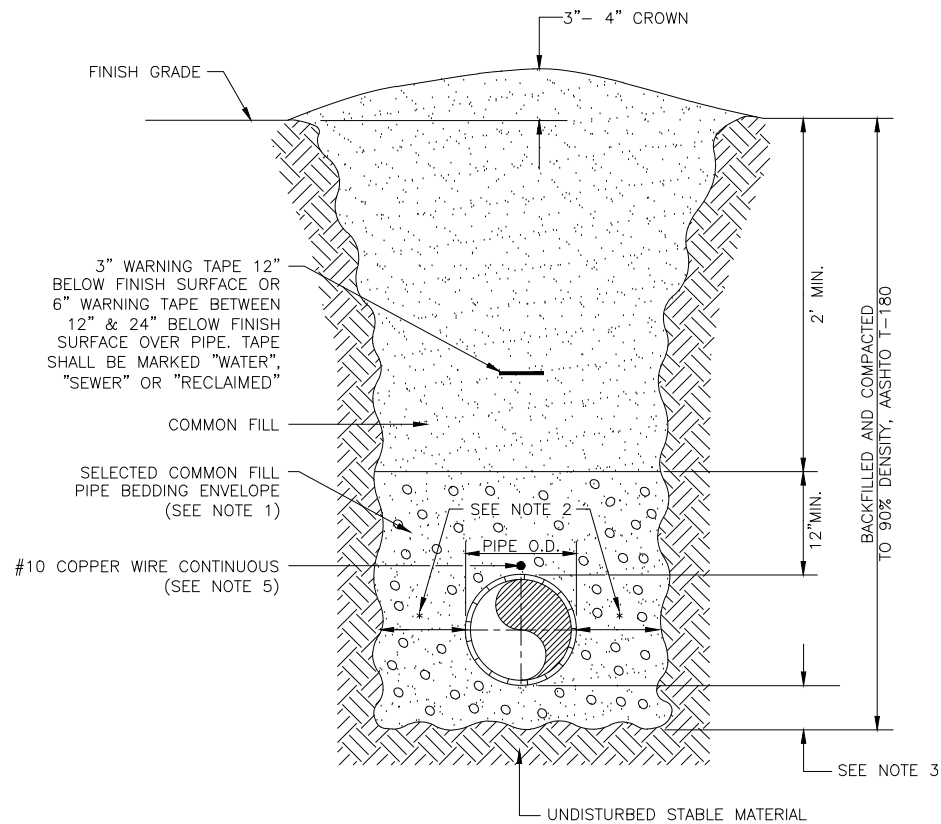
PROFILE SHEET (1)

PROJECT NO:
00193-009-01
 DATE:
NOVEMBER 2013
 SHEET NO:
C-4

FILE: J:\00193\00193009\01\ACAD\dwg\Sheets\YARD PIPING.dwg LAST SAVED: Wed, 03/12/14 5:06p PLOTTED: Wed, 03/12/14 5:15p BY: alan.schaffler

NOTES:

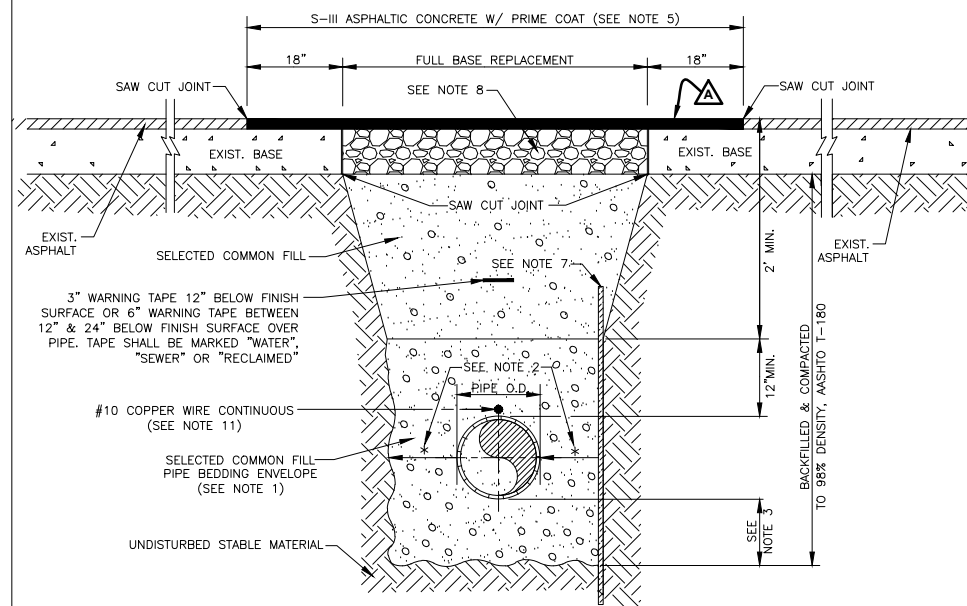
- USE OF TYPE A-2 AND A-3 PIPE BEDDING TO BE DETERMINED IN THE FIELD BY THE ENGINEER.
- PROVIDE ADEQUATE CLEARANCE TO PLACE AND COMPACT STAGE 1 BEDDING MATERIAL IN TRENCH AREA BELOW PIPE SPRINGLINE. PIPE EMBEDMENT MUST BE COMPACTED OUT TO THE TRENCH WALL OR 2.5 TIMES THE PIPE OD, WHICHEVER IS LESS.
- TYPICALLY 4" TO 6".
- PIPE INSTALLATION SHALL BE IN ACCORDANCE WITH THE MANUFACTURER'S WRITTEN INSTRUCTIONS.
- TRACER WIRE NOT REQUIRED FOR GRAVITY SEWERS.



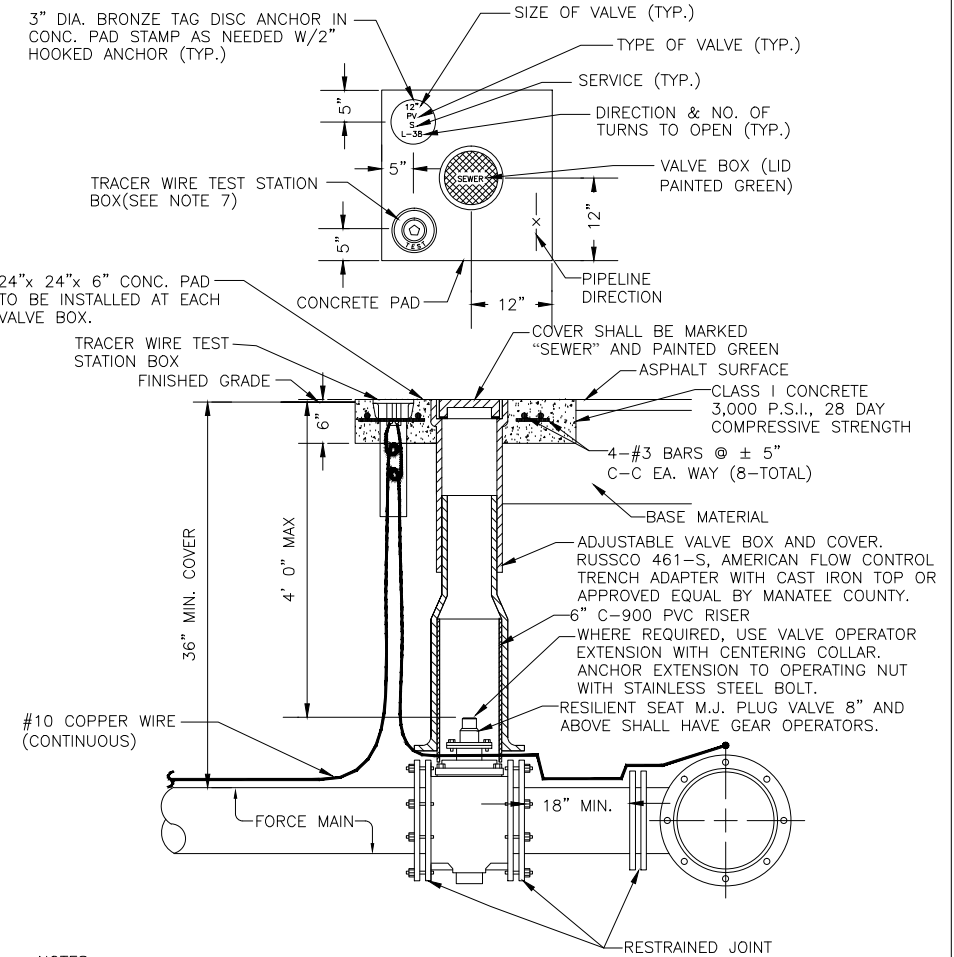
| | | | |
|--|---------------|---|----------|
| MANATEE COUNTY PUBLIC WORKS DEPARTMENT | | TRENCH WITH UNIMPROVED SURFACE TYPE A-1 PIPE BEDDING | UG-11 |
| REV. BY WRT/KE | DATE 03/11 | MAY 10, 2011 DATE OF APPROVAL | PAGE 111 |

NOTES:

- USE OF TYPE A-2 AND A-3 PIPE BEDDING TO BE DETERMINED IN THE FIELD BY THE ENGINEER.
- PROVIDE ADEQUATE CLEARANCE TO PLACE AND COMPACT STAGE 1 BEDDING MATERIAL IN TRENCH AREA BELOW PIPE SPRINGLINE. PIPE EMBEDMENT MUST BE COMPACTED OUT TO THE TRENCH WALL OR 2.5 TIMES THE PIPE OD, WHICHEVER IS LESS.
- TYPICALLY 4" TO 6".
- PIPE INSTALLATION SHALL BE IN ACCORDANCE WITH THE MANUFACTURER'S WRITTEN INSTRUCTIONS.
- ASPHALTIC CONCRETE STRUCTURE COURSE WITH PRIME COAT SHALL BE THE SAME DEPTH AND TYPE AS EXISTING OR A MINIMUM OF 1 1/4 INCH, WHICHEVER IS GREATER.
- BUTT JOINT TO EXIST ASPHALT. FINAL OVERLAY TO MATCH EXISTING WITH NO DISCERNABLE "BUMP" AT JOINT. APPLY RC-70 OR EQUIVALENT LIQUID ASPHALT TO ALL SURFACE JOINTS TO FORM SEAL.
- SHEETING ORDERED LEFT IN PLACE TO BE CUT OFF 24" BELOW FINISHED GRADE OR 12" BELOW SUBGRADE.
- BASE SHALL BE 8" MINIMUM THICKNESS CRUSHED CONCRETE.
- TEMPORARY PATCHES WILL BE INSTALLED TO PROVIDE A SMOOTH ALL WEATHER SURFACE AT ALL TIMES. PERMANENT REPLACEMENT TO BE MADE AS SOON AS POSSIBLE.
- RESTORE SIGNAGE & MARKING WITH THERMOPLASTIC PER FDOT STANDARDS, LATEST EDITION.
- TRACER WIRE NOT REQUIRED FOR GRAVITY SEWERS.
- NOTES 5. THRU 10. ARE MINIMUM REQUIREMENTS FOR A TRENCH IN A ROAD. REFER TO LATEST EDITION OF MANATEE COUNTY HIGHWAY AND TRAFFIC STANDARDS FOR ADDITIONAL REQUIREMENTS.



| | | | |
|--|---------------|---|----------|
| MANATEE COUNTY PUBLIC WORKS DEPARTMENT | | TRENCH WITH ASPHALT PAVEMENT SURFACE TYPE A-1 PIPE BEDDING (MODIFIED) | UG-12 |
| REV. BY WRT/KE | DATE 03/11 | MAY 10, 2011 DATE OF APPROVAL | PAGE 112 |



NOTES:

- "SV" TO BE IMPRESSED INTO THE NEWLY-POURED CONCRETE CURB, ALONG WITH DISTANCE IN FEET TO THE VALVE. IF NO CURB, INSTALL A GREEN DISC WITH "SV" AND A 1/8"x1" GALVANIZED STEEL SCREW IN THE EDGE OF PAVEMENT WITH THE DISTANCE (FT.) FROM THE DISC TO THE VALVE.
- ALL EXISTING AND PROPOSED VALVE BOXES SHALL BE ADJUSTED TO FINISHED GRADES AS ESTABLISHED IN THE FIELD.
- SEWER VALVES SHALL NOT BE PLACED IN HANDICAPPED RAMPS.
- PRECAST CONCRETE PADS SHALL NOT BE USED.
- ALL EXPOSED EDGES OF CONCRETE SHALL BE CHAMFERED 1/2".
- PLUG VALVES SHALL NOT BE USED AS A TAPPING VALVE. WHERE AN EXISTING FORCE MAIN IS TO BE TAPPED, USE A TAPPING GATE VALVE PER THE TAPPING SLEEVE AND VALVE DETAIL.
- TEST BOX TO BE BINGHAM & TAYLOR P200NFG OR EQUAL FOR NORMAL YARD SERVICE. WHERE VALVE WILL BE IN STREET OR UNDER VEHICLE TRAFFIC, USE P525RD CENTERED IN SEPARATE CONCRETE PAD SIMILAR TO STANDARD VALVE BOX PAD.

| | | | |
|--|---------------|----------------------------------|----------|
| MANATEE COUNTY PUBLIC WORKS DEPARTMENT | | PLUG VALVE, BOX, COVER AND TAG | US-12 |
| REV. BY CLB/DOM | DATE 11/10 | MAY 10, 2011 DATE OF APPROVAL | PAGE 152 |

SEWRF DEDICATED REJECT LINE

MANATEE COUNTY
DEPARTMENT OF PUBLIC WORKS
UTILITIES DEPARTMENT
4410 66th Street West Bradenton, Florida 34210
(941) 792-8811

Cardno TBE
380 Park Place Blvd., Suite 300, Clearwater, Florida, 33759
www.cardnotbe.com - 727.531.3505
Certificate of Authorization No. 3843

DAVID A. O'CONNOR, PE
LIC. NO.: 56803

DESIGNED
DRAWN
O.C.
APPROVED

DETAILS (1)

PROJECT NO:
00193-009-01
DATE:
NOVEMBER 2013
SHEET NO:
C-6

FILE: J:\00193\00193009\01ACAD\dwg\Sheets\Civil\Details.dwg LAST SAVED: Wed, 03/12/14 4:58p PLOTTED: Wed, 03/12/14 6:15p BY: alan.schaffer