

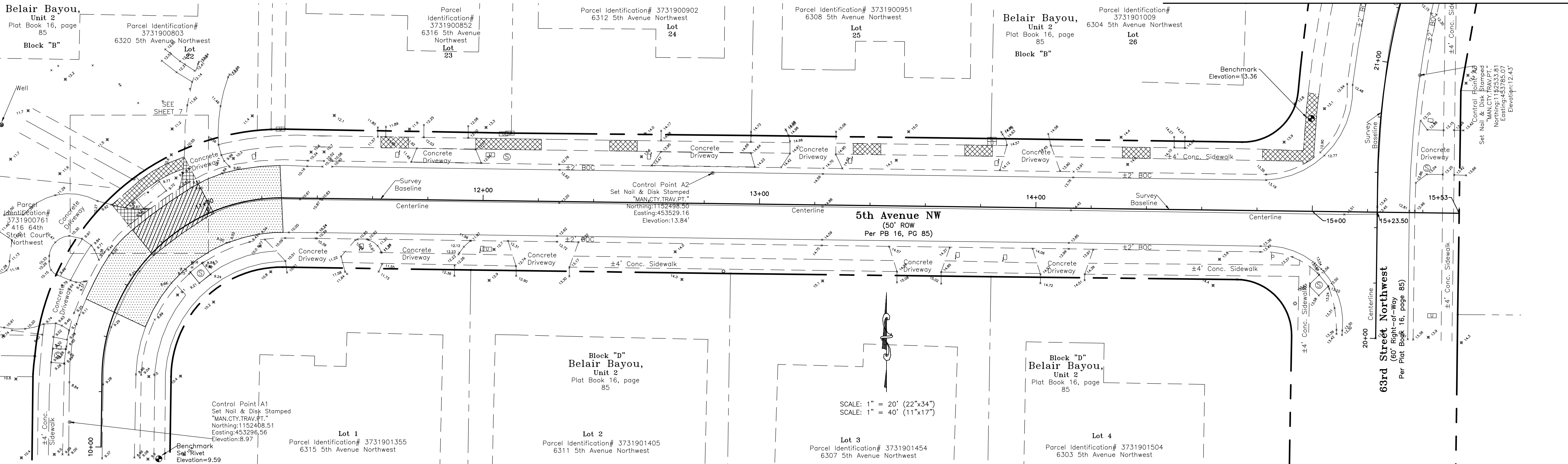
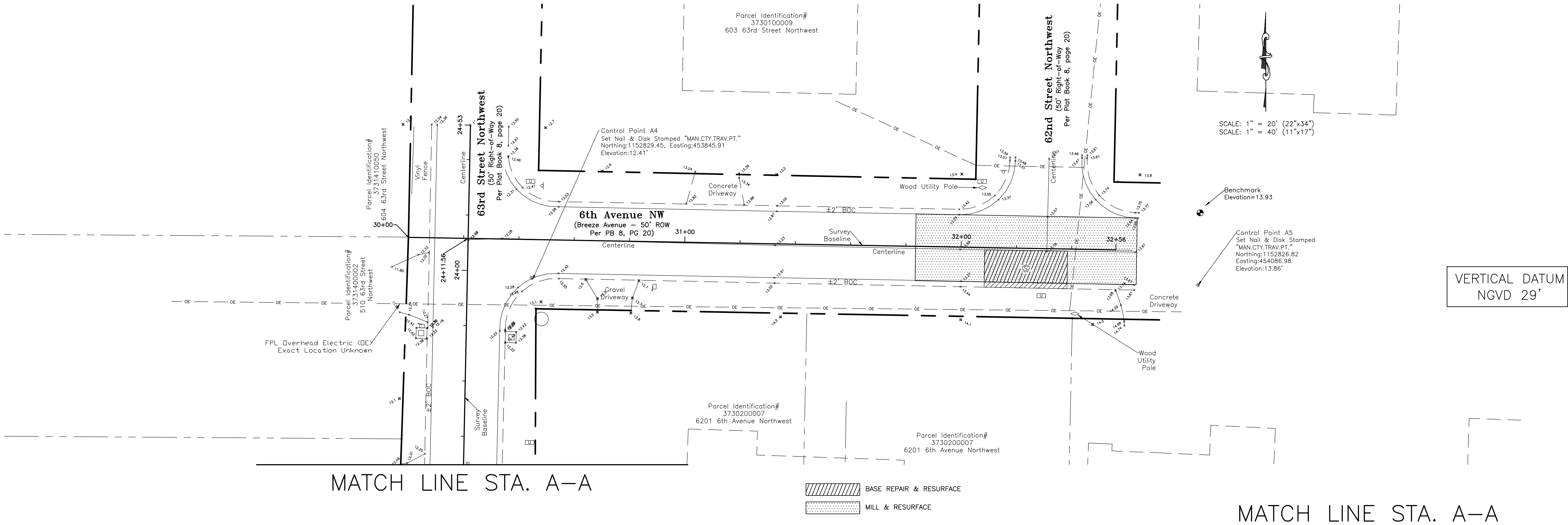
COPYRIGHT 2010 MANATEE COUNTY GOVERNMENT | S:\P\WD_Engineering_Share\Utility_Eng_Design\PROJ\Belair Bayou\Belair Bayou.dwg, 11/24/2014 9:43 AM Shea Shaun, 11.1, ANSI full bleed D (34.00 x 22.00 inches) | L1SCALE:1.0

CONTRACTOR SHALL REFERENCE SECTION 14 IN THE CURRENT MANATEE COUNTY UTILITY STANDARDS FOR RECORD DRAWING REQUIREMENTS.

MANATEE COUNTY GOVERNMENT
PUBLIC WORKS DEPARTMENT
ENGINEERING SERVICES


1022 26th Avenue East
Bradenton, FL 34208

LIFT STATION & FORCE MAIN
REPLACEMENT
BELAIR BAYOU SUBDIVISION
EXISTING GRADES



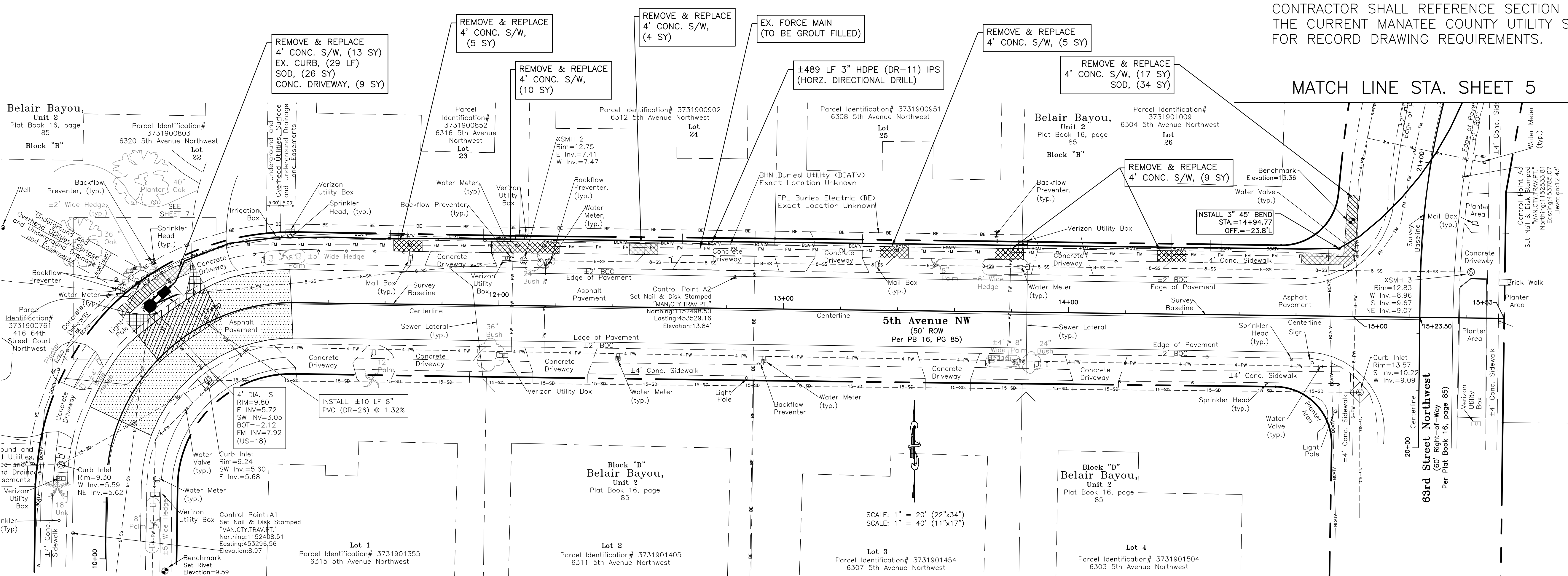
NO.	REVISION DESCRIPTION	BY	DATE
1	rev. scale annotation	jss	11/12/14

PROJECT #	402-0019707		
SURVEY #	-		
SEC./TWN./RGE	29/34/17		
VERT. SCALE	SEE PLAN		
HORZ. SCALE	SEE PLAN		
SURVEYED	MC	DATE	8/27/13
DESIGNED	JSS		9/2013
DRAWN	JSS		9/2013
CHECKED	-		-

JOHN S. SHOWN
P.E.
FLORIDA
No. 60923
11/24/14
STATE OF FLORIDA
PROFESSIONAL ENGINEER

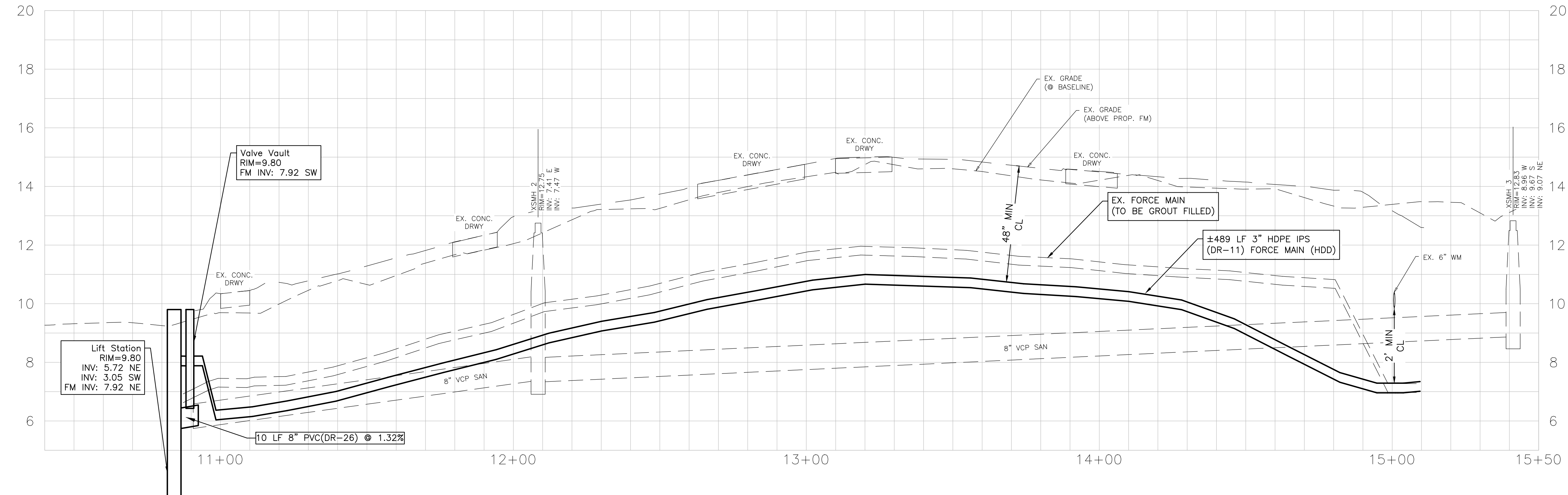
SHEET 3 OF 10

COPYRIGHT 2010 MANATEE COUNTY GOVERNMENT | S:\P\WD_Engineering_Share\Util_Eng_Design\PROJ\MANATEE\SWR\SWR_Sum_Swr - LS Upgrade\SLS R&R 2013 Group 1 Belair Bayou\TM\DWG\active-Belair Bayou 22.34.dwg, 4. Plan Profile, 11/24/2014, 9:43 AM Shea Shoun, P.E. | ANSI full bleed D (34.00 x 22.00 inches) | L1SCALE:1:0



- NOTES:
- SEE SHEET 6 FOR A BLOW-UP DETAIL OF THE LIFT STATION AREA.
 - CONTRACTOR SHALL VISUALLY LOCATE ALL WATER SERVICES AND SANITARY SEWER LATERALS TO ENSURE THERE ARE NO CONFLICTS WITH THE DIRECTIONAL DRILL PATH.

±38 SY BASE REPAIR & RESURFACE
±204 SY MILL & RESURFACE

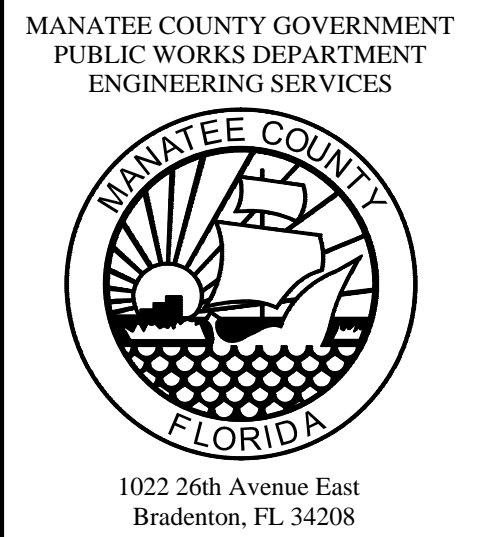


CONTRACTOR SHALL REFERENCE SECTION 14 IN THE CURRENT MANATEE COUNTY UTILITY STANDARDS FOR RECORD DRAWING REQUIREMENTS.

MATCH LINE STA. SHEET 5

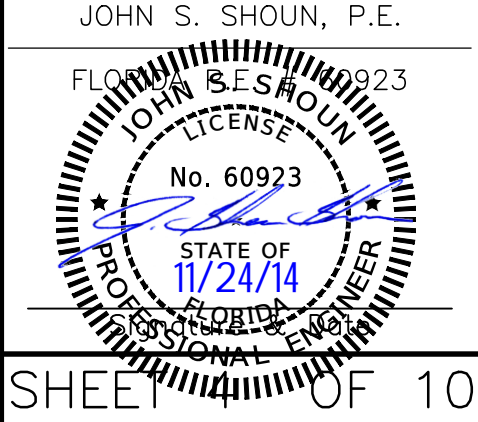
VERTICAL DATUM
NGVD 29'

LIFT STATION & FORCE MAIN
REPLACEMENT
BELAIR BAYOU SUBDIVISION
PLAN & PROFILE



NO.	REVISION DESCRIPTION	BY	DATE
1	rev. scale annotation; add s/w callout	jss	11/12/14

PROJECT #	402-0019707		
SURVEY #	-		
SEC./TWN./RGE	29/34/17		
VERT. SCALE	SEE PLAN		
HORZ. SCALE	SEE PLAN		
	BY	DATE	
SURVEYED	MC	8/27/13	
DESIGNED	JSS	9/2013	
DRAWN	JSS	9/2013	
CHECKED	-	-	

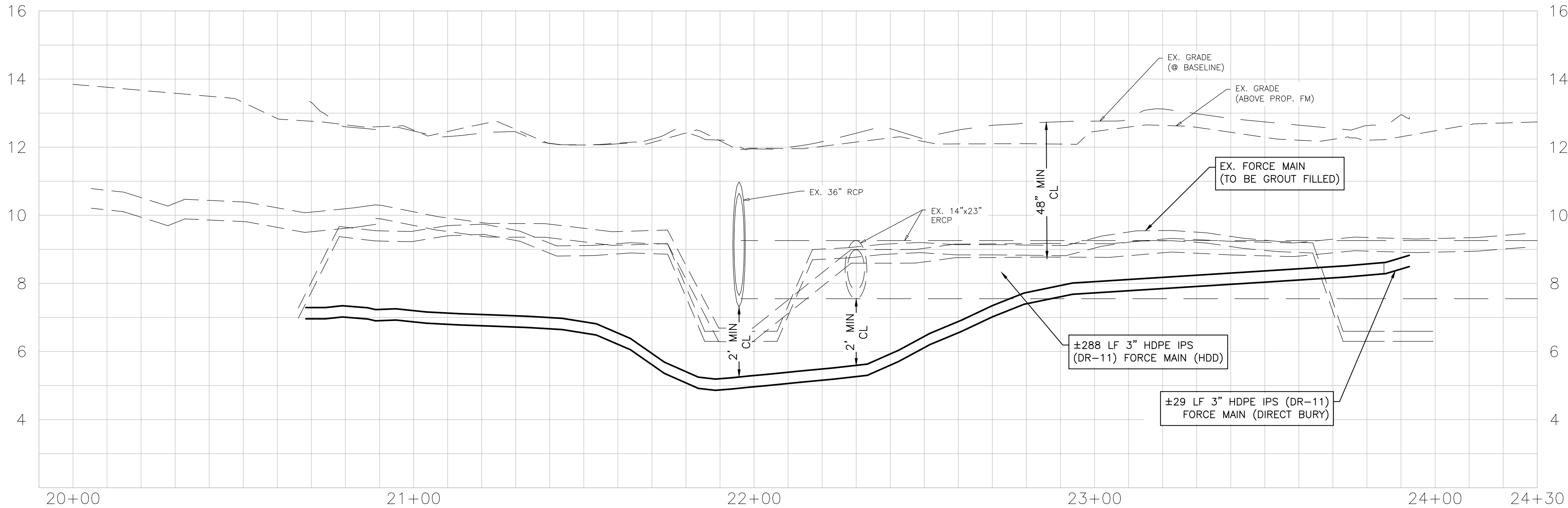
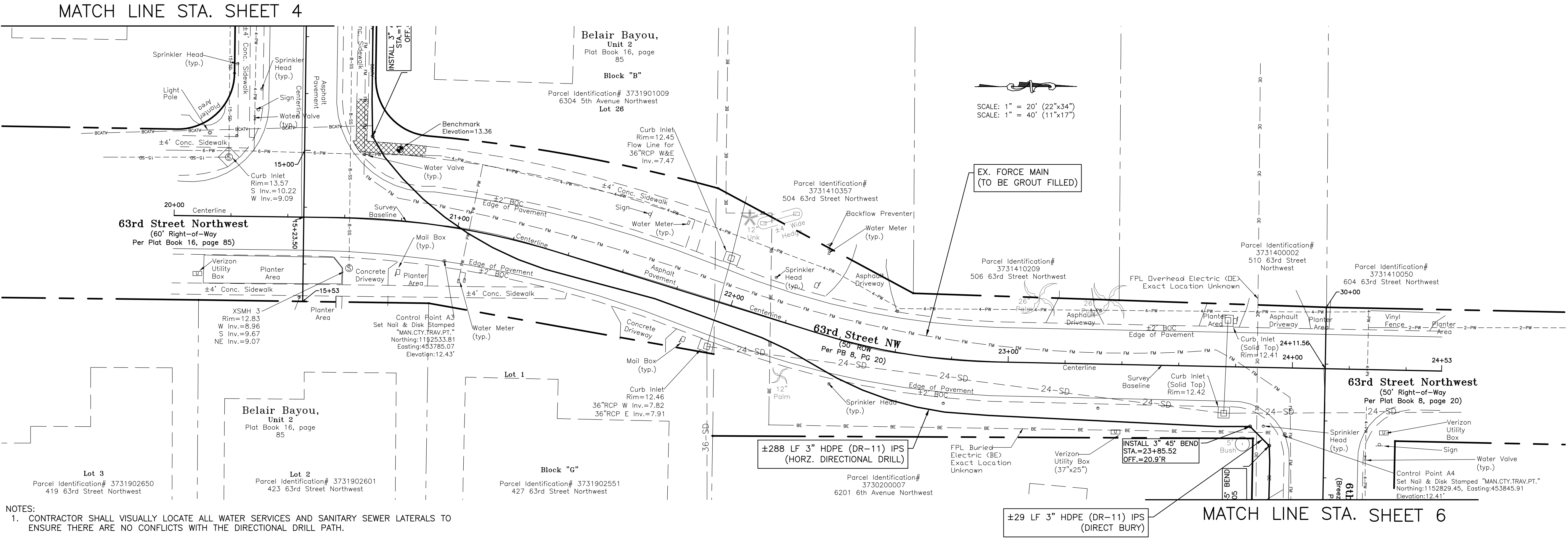


CONTRACTOR SHALL REFERENCE SECTION 14 IN THE CURRENT MANATEE COUNTY UTILITY STANDARDS FOR RECORD DRAWING REQUIREMENTS.

MANATEE COUNTY GOVERNMENT
PUBLIC WORKS DEPARTMENT
ENGINEERING SERVICES


1022 26th Avenue East
Bradenton, FL 34208

LIFT STATION & FORCE MAIN
REPLACEMENT
BELAIR BAYOU SUBDIVISION
PLAN & PROFILE




NO.	REVISION DESCRIPTION	BY	DATE
1	rev. scale annotation	jss	11/12/14

PROJECT #		402-0019707	
SURVEY #		-	
SEC./TWN./RGE		29/34/17	
VERT. SCALE		SEE PLAN	
HORZ. SCALE		SEE PLAN	
	BY	DATE	
SURVEYED	MC	8/27/13	
DESIGNED	JSS	9/2013	
DRAWN	JSS	9/2013	
CHECKED	-	-	

JOHN S. SHOUN, P.E.
FLORIDA PROFESSIONAL ENGINEER
LICENSE No. 60923
11/24/14
STATE OF FLORIDA

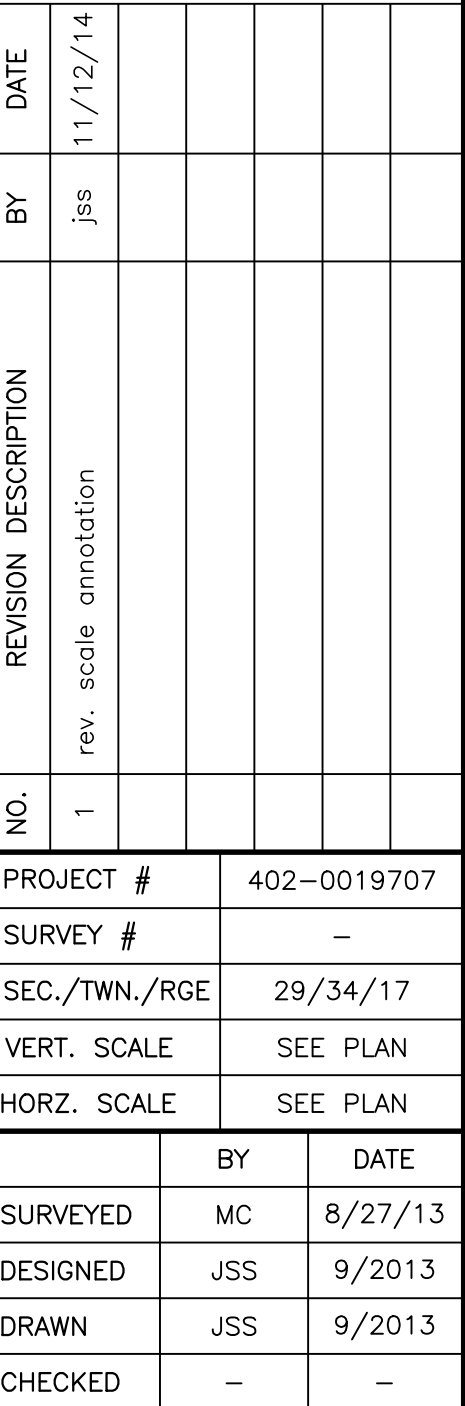
SHEET 5 OF 10

MANATEE COUNTY GOVERNMENT
PUBLIC WORKS DEPARTMENT
ENGINEERING SERVICES



1022 26th Avenue East
Bradenton, FL 34208

**LIFT STATION & FORCE MAIN
REPLACEMENT
BELAIR BAYOU SUBDIVISION
PLAN & PROFILE**



FLORIDA
JOHN S. SHOUN
LICENSE
No. 60923
STATE OF
11/24/14
FLORIDA
PROFESSIONAL ENGINEER

ANSI full bleed D (34.00" x 22.00" inches)

