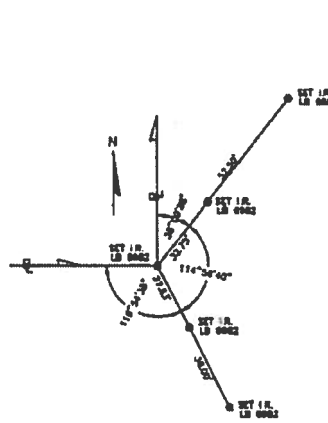
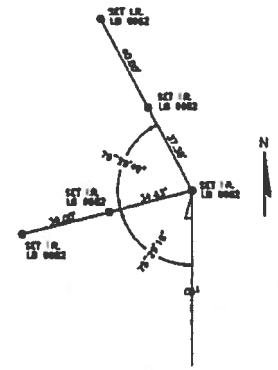


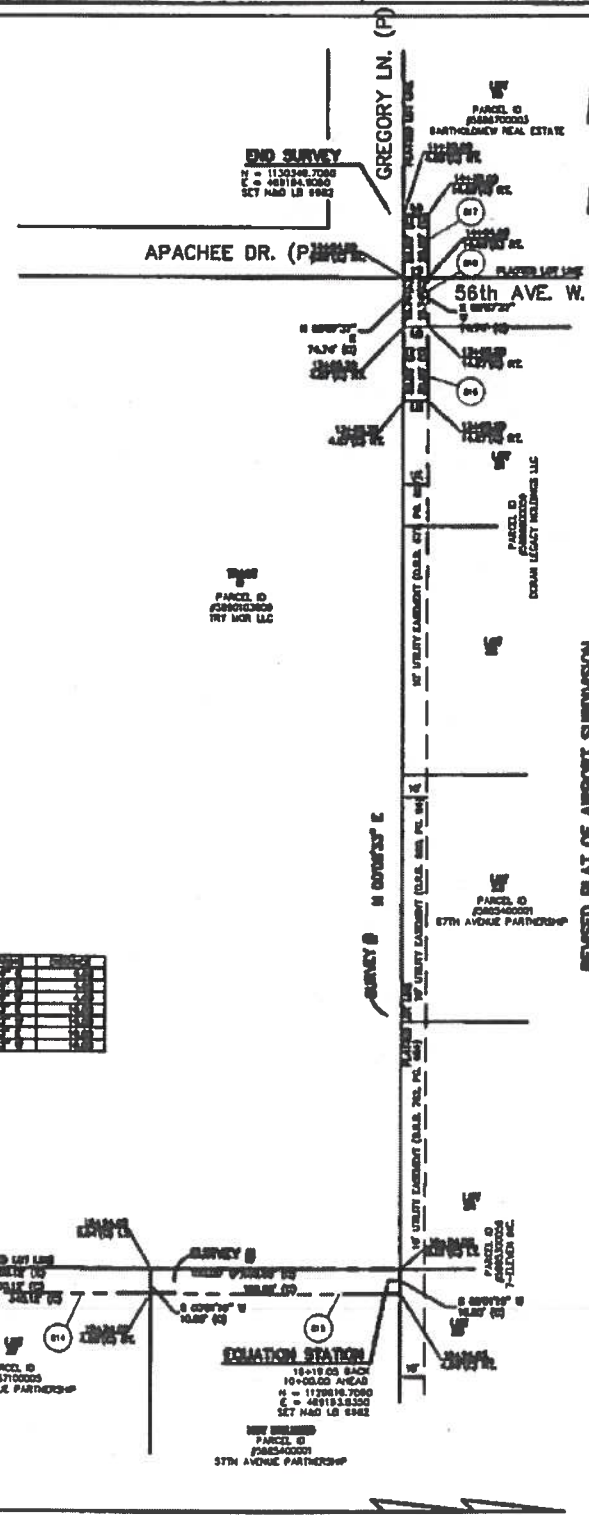
BEGIN SURVEY
STA. 10+00.00
WATERLINE R/W EASEMENT



EQUATION STATION
STA. 10+00.00 AHEAD
STA. 16+19.08 BACK
WATERLINE R/W EASEMENT



END SURVEY
STA. 14+30.00
WATERLINE R/W EASEMENT



DRAWING IDENTIFYING PROJECT BASELINE AND STATIONING

1. THIS DRAWING SHEET IS INCLUDED AS PART OF THE PROJECT DRAWING SET FOR REFERENCE PURPOSES ONLY, AND HAS BEEN RELIED UPON BY CH2M FOR HORIZONTAL CONTROL OF THE PROJECT. THE INFORMATION PROVIDED BY THIS DRAWING HAS BEEN DEVELOPED BY ZNS ENGINEERING FOR THIS PROJECT, AND ZNS ENGINEERING SHOULD BE CONTACTED BY THE CONTRACTOR, OR THE CONTRACTOR'S SURVEYOR, SHOULD THERE BE ANY QUESTIONS ABOUT THE INFORMATION PROVIDED HEREIN, OR FOR ANY UPDATES TO THIS DRAWING.

2. IN ACCORDANCE WITH SPECIFICATION SECTION 01050 "FIELD ENGINEERING AND SURVEYING," PARAGRAPH 1.04, THE CONTRACTOR SHALL HAVE A LICENSED SURVEYOR ESTABLISH IN THE FIELD THE LIMITS OF EASEMENTS, AND A SURVEY BASELINE FOR USE IN REFERENCING THE CONSTRUCTED LOCATION OF THE VARIOUS PROJECT ELEMENTS. THE FIELD ESTABLISHED BASELINE SHALL BE SHOWN IN THE PROJECT RECORD DRAWINGS.

SPECIFIC PURPOSE SURVEY
OF
SUBURBAN WATERLINE RIGHT OF WAY CORRIDOR
REVISED PLAT OF AIRPORT SUBDIVISION
PLAT BOOK 7, PAGE 68
LOCATED IN
SECTION 14, TOWNSHIP 35 SOUTH, RANGE 17 EAST
MANATEE COUNTY, FLORIDA

JOSEPH CRAIG GOLDBACH
LICENSE
No. 22385
STATE OF FLORIDA
11/22/17
PROFESSIONAL ENGINEER

JOSEPH C. GOLDBACH
FL P.E. No. 22385

APPROVED BY: JAM, JAM, JCG, NHP

NO. DATE REVISION BY APVD

BID DOCUMENTS

CH2MHILL
4350 WEST CYPRESS STREET SUITE 600
TAMPA, FLORIDA 33607-4155
LB 0002934 AA C000656

MANATEE COUNTY
SUBURBAN SYSTEM
WATER LINE REPLACEMENT PROJECT
PHASE 3
MANATEE COUNTY, FLORIDA
PROJECT No. 60747.70

ZNS ENGINEERING
SURVEYING | PLANNING | LANDSCAPE ARCHITECTURE | ENVIRONMENTAL CONSULTANTS

DATE: SEPTEMBER 10, 2013
SCALE: 1"=10'

ZNS ENGINEERING SPECIFIC PURPOSE SURVEY OF SUBURBAN WATERLINE RIGHT OF WAY CORRIDOR DATED SEPTEMBER 10, 2013

SHEET	R4
DWG	R4.DWG
DATE	MAY, 2017
PROJ	388879.WM