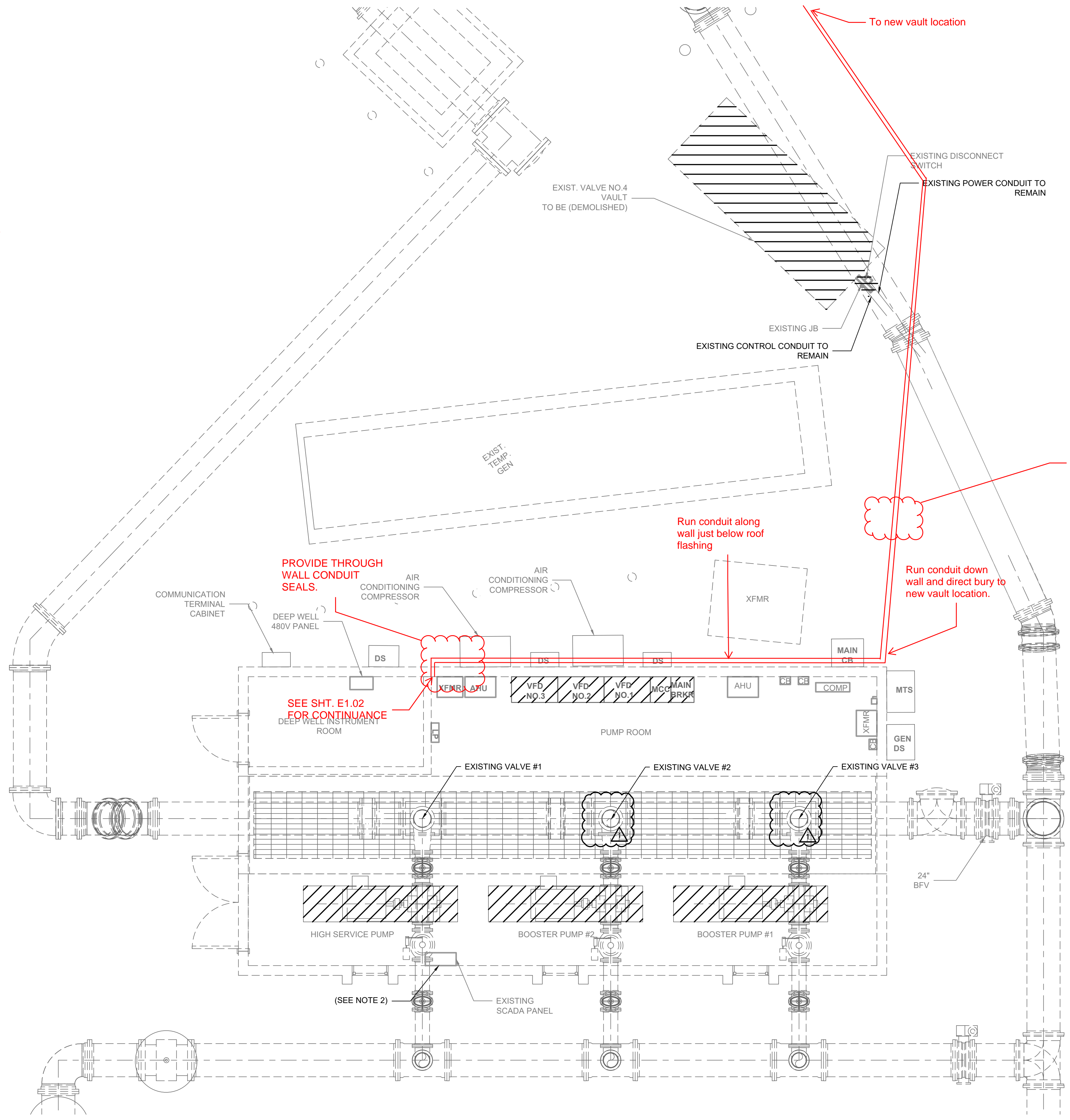
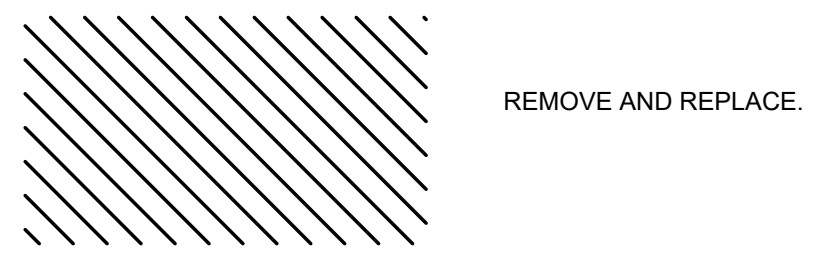


DRAWING  
RESCALED

- NOTES:
1. CONTRACTOR TO PROVIDE TEMPORARY POWER FOR PUMP #1 (125HP) USING TEMPORARY MOTOR STARTER. USE ACROSS THE LINE STARTER.
  2. SCADA PANEL TO BE REMOVED AND REPLACED AS PART OF SEPARATE CONTRACT IN NEW LOCATION SEE E1.02.
  3. REMOVE ANY USED CONDUIT AND WIRE DURING INSTALLATION. UNDER GROUND OR SLAB CONDUIT CAP AND ABANDON AFTER EXTRACTING WIRE.

**DEMOLITION LEGEND**



P-202 and C105 TYP.

Run conduit along wall just below roof flashing

Run conduit down wall and direct bury to new vault location.

PROVIDE THROUGH WALL CONDUIT SEALS.

SEE SHT. E1.02 FOR CONTINUANCE DEEP WELL INSTRUMENT ROOM

REV. NO.	DESCRIPTION	DATE
3	ADDENDUM CONTRACTOR QUESTIONS	
1	ADDENDUM - REMOVAL OF PROPOSED VALVES	11-14-22
	REVISIONS	

SEAL

AUBREY A. HAUDRICOURT, P.E.  
No. 66861

1365 Hamlet Avenue  
Clearwater, Florida 33756-3331  
Phone: (727) 442-7196, Fax: (727) 461-3827

CA Lic. No. 29588  
www.mckimcreed.com

Manatee  
County  
FLORIDA

**CORTEZ BOOSTER PUMP STATION UPGRADES**

**ELECTRICAL**

**SITE AND PUMP ROOM DEMOLITION PLAN**

PROJ. START DATE: MAR. 2020	SCALE
MCE PROJ. # 01024-0193	HORIZONTAL: E1.01
DRAWN JG	TBD
DESIGNED AAH	VERTICAL: TBD
CHECKED MAC	TBD
PROJ. MGR. BP	REVISION
STATUS:	ISSUED FOR BID