



1112 Manatee Avenue West
Bradenton, FL 34205
purchasing@mymanatee.org

Solicitation Addendum

Addendum No.: 3
Solicitation No.: 22-R080035BB
Solicitation Title: Wi-Fi Implementation Services
Addendum Date: November 4, 2022
Procurement Contact: Brooke Baker, CPPB, Procurement Team Leader

RFP No. 22-R080035BB is amended as set forth herein. This Addendum is hereby incorporated in and made a part of the RFP.

The deadline to submit all inquiries concerning interpretation, clarification, or additional information pertaining to the RFP was on November 1, 2022.

ADD:

EXHIBIT 5, FIBER PROXIMITY MAPS

Exhibit 5, Fiber Proximity Maps, is hereby incorporated in and made a part of the RFP. Exhibit 5 shows the existing Manatee County fiber conduit locations and the approximate paths and distances for the required new conduit/fiber.

ADD:

EXHIBIT 6, BLACKSTONE PARK CONDUIT LAYOUT MAP

Exhibit 6, Blackstone Park Conduit Layout Map, is hereby incorporated in and made a part of the RFP. Exhibit 6 shows the conduit layout for Blackstone Park as it is the only park that has an existing conduit system that can be used for the project.

END OF ADDENDUM

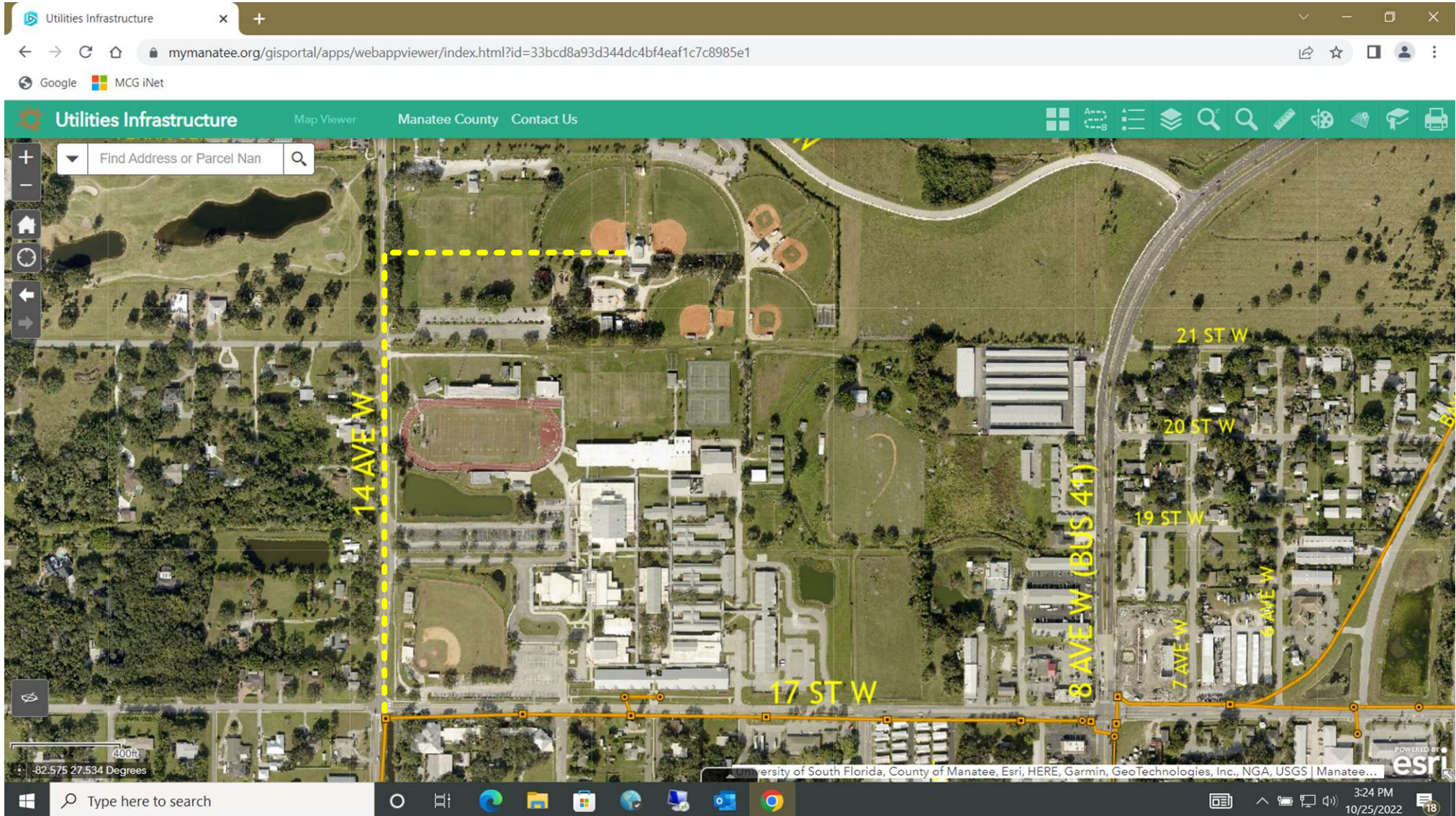
INSTRUCTIONS:

Receipt of this Addendum must be acknowledged as instructed in the solicitation document. Failure to acknowledge receipt of this Addendum may result in the response being deemed non-responsive.

AUTHORIZED FOR RELEASE

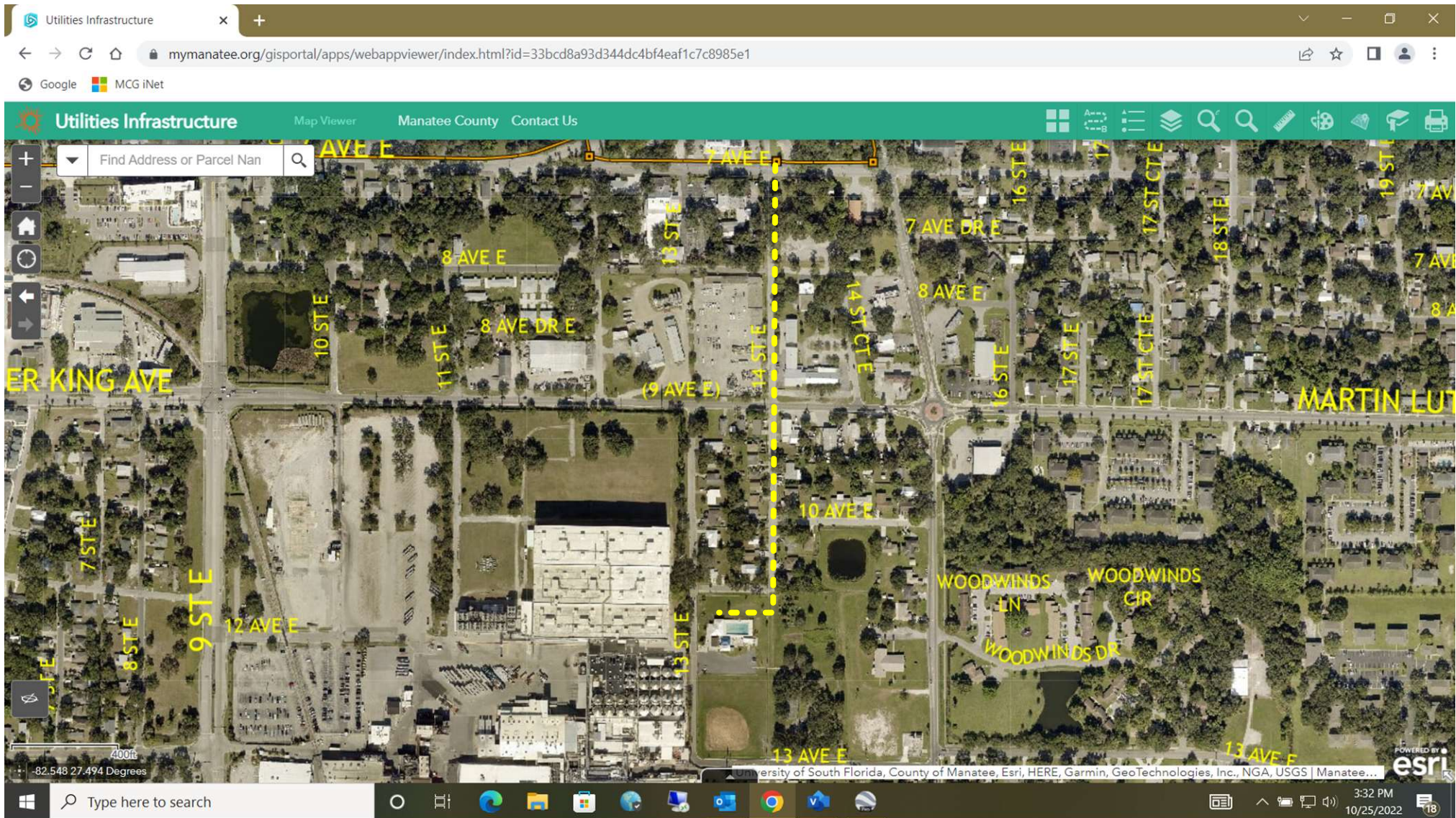
EXHIBIT 5, FIBER PROXIMITY MAPS

Blackstone Park – County Fiber Proximity



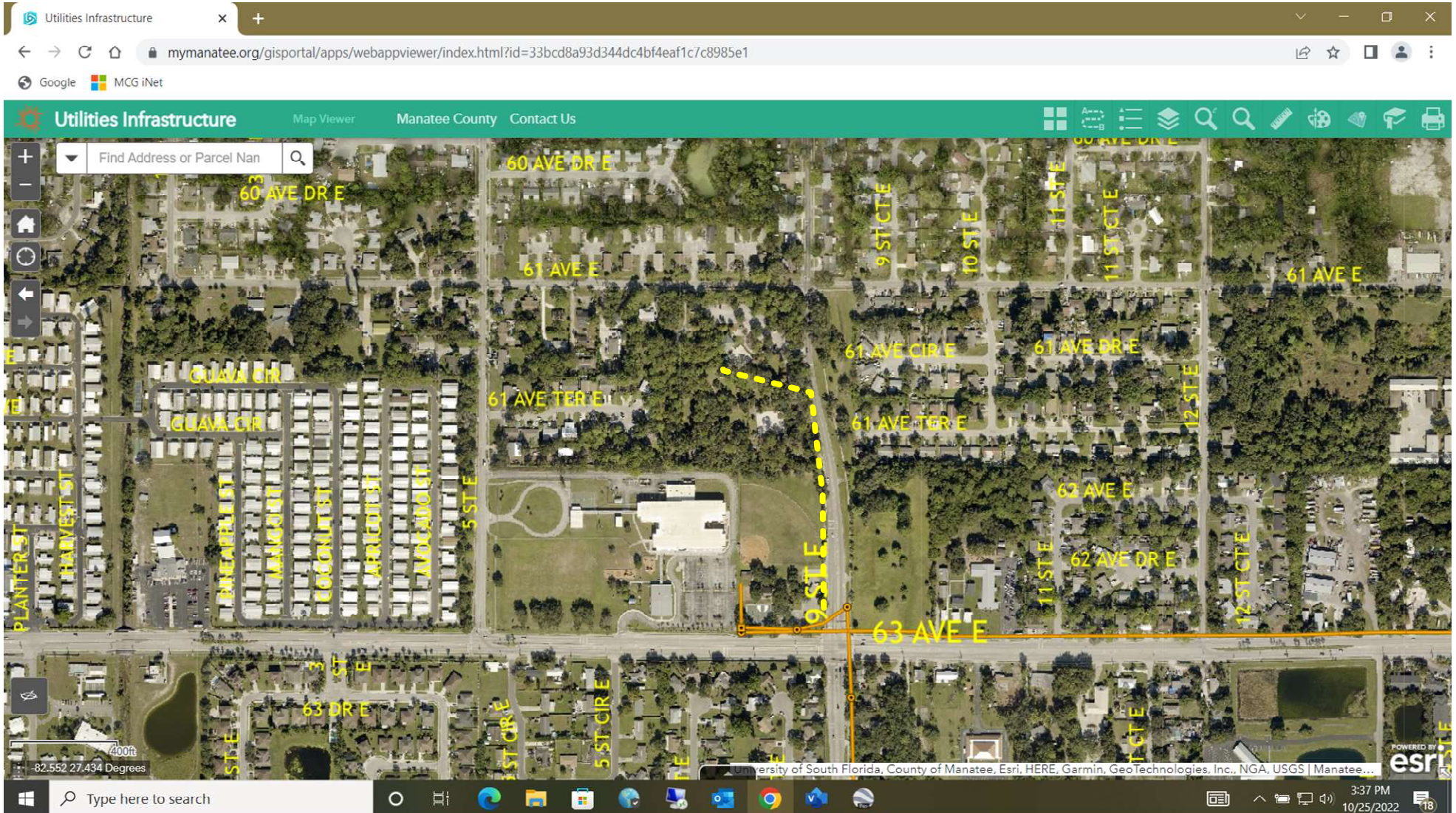
New conduit/fiber distance
approx. 2600 feet

East County Park – County Fiber Proximity



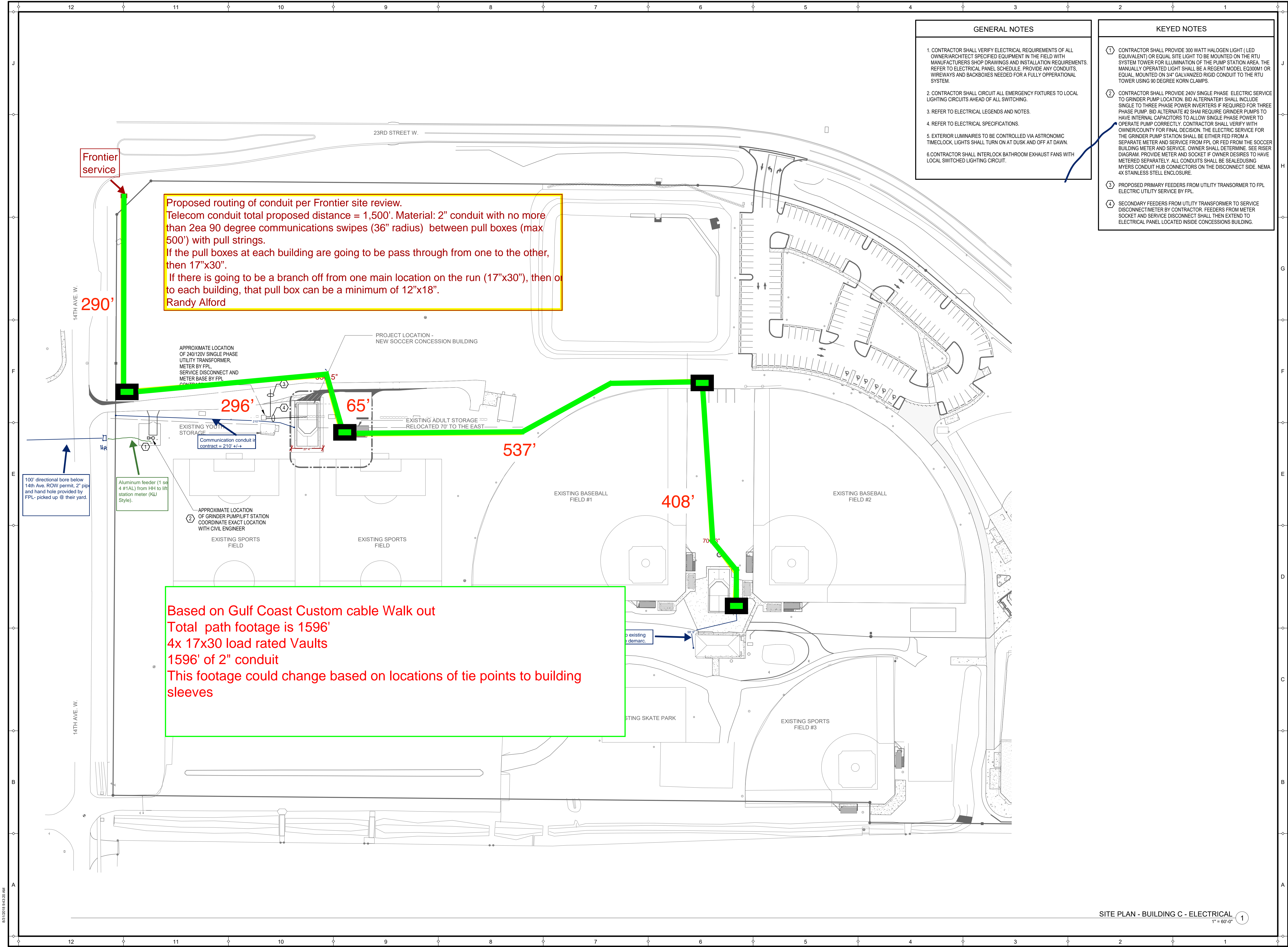
New conduit/fiber distance
approx. 2000 feet

Pride Park – County Fiber Proximity



New conduit/fiber distance
approx. 1250 feet

EXHIBIT 6, BLACKSTONE PARK CONDUIT LAYOUT MAP



Proposed routing of conduit per Frontier site review.
 Telecom conduit total proposed distance = 1,500'. Material: 2" conduit with no more than 2ea 90 degree communications swipes (36" radius) between pull boxes (max 500') with pull strings.
 If the pull boxes at each building are going to be pass through from one to the other, then 17"x30".
 If there is going to be a branch off from one main location on the run (17"x30"), then one to each building, that pull box can be a minimum of 12"x18".
 Randy Alford

Based on Gulf Coast Custom cable Walk out
 Total path footage is 1596'
 4x 17x30 load rated Vaults
 1596' of 2" conduit
 This footage could change based on locations of tie points to building sleeves

- GENERAL NOTES**
1. CONTRACTOR SHALL VERIFY ELECTRICAL REQUIREMENTS OF ALL OWNER/ARCHITECT SPECIFIED EQUIPMENT IN THE FIELD WITH MANUFACTURERS SHOP DRAWINGS AND INSTALLATION REQUIREMENTS. REFER TO ELECTRICAL PANEL SCHEDULE. PROVIDE ANY CONDUITS, WIREWAYS AND BACKBOXES NEEDED FOR A FULLY OPERATIONAL SYSTEM.
 2. CONTRACTOR SHALL CIRCUIT ALL EMERGENCY FIXTURES TO LOCAL LIGHTING CIRCUITS AHEAD OF ALL SWITCHING.
 3. REFER TO ELECTRICAL LEGENDS AND NOTES.
 4. REFER TO ELECTRICAL SPECIFICATIONS.
 5. EXTERIOR LUMINAIRES TO BE CONTROLLED VIA ASTRONOMIC TIMECLOCK. LIGHTS SHALL TURN ON AT DUSK AND OFF AT DAWN.
 6. CONTRACTOR SHALL INTERLOCK BATHROOM EXHAUST FANS WITH LOCAL SWITCHED LIGHTING CIRCUIT.

- KEYED NOTES**
1. CONTRACTOR SHALL PROVIDE 300 WATT HALOGEN LIGHT (LED EQUIVALENT) OR EQUAL SITE LIGHT TO BE MOUNTED ON THE RTU SYSTEM TOWER FOR ILLUMINATION OF THE PUMP STATION AREA. THE MANUALLY OPERATED LIGHT SHALL BE A REGENT MODEL E0300M1 OR EQUAL, MOUNTED ON 3/4" GALVANIZED RIGID CONDUIT TO THE RTU TOWER USING 90 DEGREE KORN CLAMPS.
 2. CONTRACTOR SHALL PROVIDE 240V SINGLE PHASE ELECTRIC SERVICE TO GRINDER PUMP LOCATION. BID ALTERNATE#1 SHALL INCLUDE SINGLE TO THREE PHASE POWER INVERTERS IF REQUIRED FOR THREE PHASE PUMP. BID ALTERNATE #2 SHALL REQUIRE GRINDER PUMPS TO HAVE INTERNAL CAPACITORS TO ALLOW SINGLE PHASE POWER TO OPERATE PUMP CORRECTLY. CONTRACTOR SHALL VERIFY WITH OWNER/COUNTY FOR FINAL DECISION. THE ELECTRIC SERVICE FOR THE GRINDER PUMP STATION SHALL BE EITHER FED FROM A SEPARATE METER AND SERVICE FROM FPL OR FED FROM THE SOCCER BUILDING METER AND SERVICE. OWNER SHALL DETERMINE. SEE RISER DIAGRAM. PROVIDE METER AND SOCKET IF OWNER DESIRES TO HAVE METERED SEPARATELY. ALL CONDUITS SHALL BE SEALED USING MYERS CONDUIT HUB CONNECTORS ON THE DISCONNECT SIDE. NEMA 4X STAINLESS STEEL ENCLOSURE.
 3. PROPOSED PRIMARY FEEDERS FROM UTILITY TRANSFORMER TO FPL ELECTRIC UTILITY SERVICE BY FPL.
 4. SECONDARY FEEDERS FROM UTILITY TRANSFORMER TO SERVICE DISCONNECT METER BY CONTRACTOR. FEEDERS FROM METER SOCKET AND SERVICE DISCONNECT SHALL THEN EXTEND TO ELECTRICAL PANEL LOCATED INSIDE CONCESSIONS BUILDING.

genesis
engineering
group, llc
2001 COLUMBIAN BLVD, SUITE 300
TAMPA, FLORIDA 33606
PHONE (813) 251-1894
FAX (813) 251-1894

genesis
www.genesiseng.com

MANATEE OFFICE
SAFETY HARBOR, FLORIDA
PHONE (727) 725-5890
FAX (727) 725-3960

TAMPA OFFICE
324 HYDRE BLVD, SUITE 300
TAMPA, FLORIDA 33606
PHONE (813) 251-1894
FAX (813) 251-1894

SAFETY HARBOR OFFICE
3007 CANTLEY BLVD, SUITE 100
SAFETY HARBOR, FLORIDA
PHONE (813) 251-2933
FAX (813) 251-2933

FLEISCHMANGARCIA
ARCHITECTURE | PLANNING | INTERIORS

MANATEE COUNTY
BLACKSTONE PARK IMPROVEMENTS
SOCCER CONCESSION BUILDING
BUILDING C
CITY OF PALMETTO, FLORIDA

THIS PERSON AND DRAWING ARE THE PROPERTY OF FLEISCHMANGARCIA. NO PART OF THIS DRAWING IS TO BE REPRODUCED OR TRANSMITTED IN ANY FORM OR BY ANY MEANS, ELECTRONIC OR MECHANICAL, INCLUDING PHOTOCOPYING, RECORDING, OR BY ANY INFORMATION STORAGE AND RETRIEVAL SYSTEM, WITHOUT THE WRITTEN PERMISSION OF FLEISCHMANGARCIA.

I, CERTIFY TO THE BEST OF MY KNOWLEDGE AND BELIEF THAT I AM A LICENSED PROFESSIONAL ENGINEER IN THE STATE OF FLORIDA AND THAT I AM THE DESIGNER OF THIS DRAWING. I AM NOT PROVIDING ANY PROFESSIONAL SERVICES TO ANY OTHER PARTY IN CONNECTION WITH THIS DRAWING.

FGA PROJECT NUMBER
17046

ISSUE DATE
08-17-18

| REVISIONS | | |
|-----------|------|-------|
| NO. | DATE | NOTES |
| | | |
| | | |
| | | |

SHEET NUMBER
E1.1-C

SITE PLAN - BUILDING C - ELECTRICAL 1
 1" = 60'-0"