



1112 Manatee Ave. West
Bradenton, FL 34205
purchasing@mymanatee.org

Solicitation Addendum

Addendum No.:	1
Solicitation No.:	20-R074101SAM
Solicitation Title:	Coquina Beach Landscaping Phase 1
Addendum Date:	April 17, 2020
Procurement Contact:	Sherri Meier

RFO No. 20-R074101SAM is amended as set forth herein. Responses to questions posed by prospective bidders are provided below. This addendum is hereby incorporated in and made a part of RFO No. 20-R074101SAM.

Replace:

EXHIBIT 3, CONSTRUCTION PLANS – COQUINA BEACH IPO PHASE 1, PLAN SHEET PAGES I-100, I-150 AND I-150.

Replace Exhibit 3, Construction Plans – Coquina Beach IPO Phase 1, Plan Sheet Pages I-100, I-150 AND I-150 with revised Plan Sheet Numbers I-100, I-150 and I-151 issued with this Addendum 1.

QUESTIONS AND RESPONSES:

Q1. “What type of mulch are we using?”

R1. Refer to Landscape Specifications Section 9.1 for acceptable Mulch type.

Q2. Clarification regarding the Irrigation System

- a. **“The valves specified are DC and the controller specified is AC. One or the other is wrong as they will not function together.”**
- b. **“Also, the controller specified is an 18 Station controller. We are installing only 4 zones (stations). Are the extra 12 stations for future expansion or is that a mistake also?”**

R2.

- a. Removed notation for “DC” and changed specification on schedule.
- b. This was not a mistake on the plans. The ACC was specified for its durability and ability for future expansion. We dropped it to the I-Core which will be installed with 6 stations instead of the minimum 12 of the ACC. This model still provides ability for future expansion if more zones are added.

NOTE: Items that are ~~struck through~~ are deleted. Items that are underlined have been added or changed. All other terms and conditions remain as stated in the RFO.

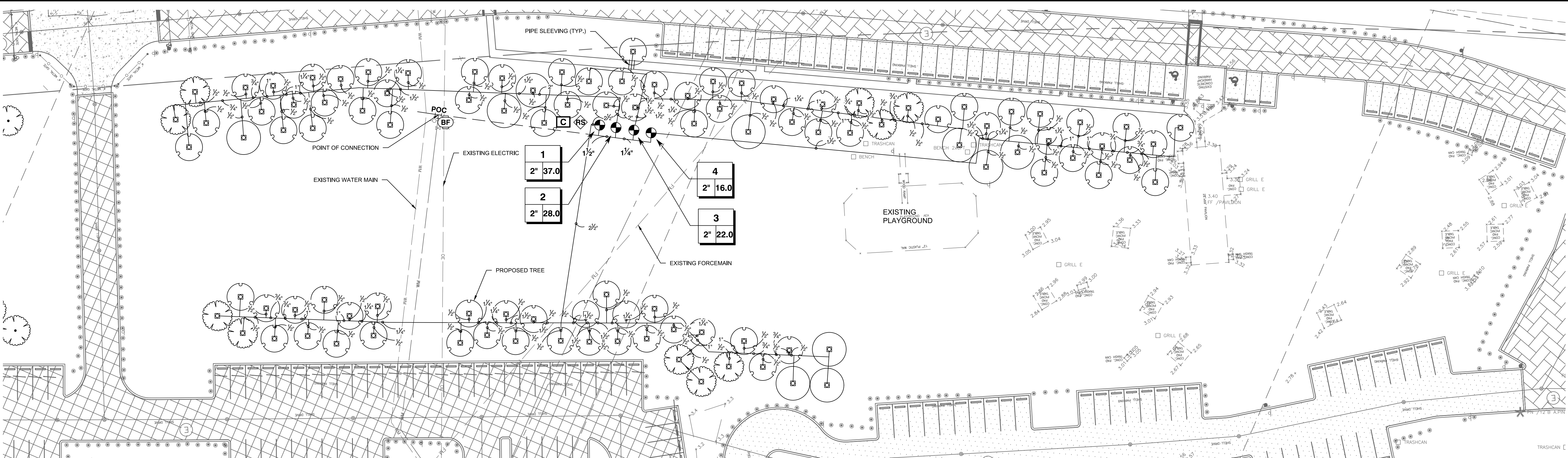
End of Addendum

INSTRUCTIONS:

Receipt of this addendum must be acknowledged as instructed in the solicitation document. Failure to acknowledge receipt of this Addendum may result in the response being deemed non-responsive.

AUTHORIZED FOR RELEASE

This document, together with the concepts and designs presented herein, as an instrument of service, is intended only for the specific purpose and client for which it was prepared. Reuse of and improper reliance on this document without written authorization and adaptation by Kimley-Horn and Associates, Inc. and be without liability to Kimley-Horn and Associates, Inc.



IRRIGATION SCHEDULE PHASE I

SYMBOL	MANUFACTURER/MODEL/DESCRIPTION	QTY	PSI	DETAIL
	HUNTER PCB FLOOD BUBBLER, 1/2" FIPT.	103	20	
SYMBOL	MANUFACTURER/MODEL/DESCRIPTION	QTY		DETAIL
	HUNTER ICV-G-BSP 2" 1", 1-1/2", 2", AND 3" PLASTIC ELECTRIC REMOTE CONTROL VALVES, GLOBE CONFIGURATION, WITH BSP THREADED INLET/OUTLET, FOR COMMERCIAL/MUNICIPAL USE.	4		
	ZURN 375 1" REDUCED PRESSURE PRINCIPLE ASSEMBLY. SIZES 1/2", 3/4", 1", 1-1/4", 1-1/2", 2".	1		
	HUNTER IC-0600-PED-SS MODULAR CONTROLLER, 6 STATIONS, OUTDOOR MODEL, STAINLESS STEEL PEDESTAL. NO MODULE REQUIRED. COMMERCIAL USE.	1		
	HUNTER RAIN-CLIK RAIN SENSOR, WITH CONDUIT INSTALLATION, MOUNT AS NOTED. NORMALLY CLOSED SWITCH.	1		
	POINT OF CONNECTION 2"	1		
—————	IRRIGATION LATERAL LINE: PVC SCHEDULE 40 1/2"	1,179 L.F.		
—————	IRRIGATION LATERAL LINE: PVC SCHEDULE 40 3/4"	126.8 L.F.		
—————	IRRIGATION LATERAL LINE: PVC SCHEDULE 40 1"	150.1 L.F.		
—————	IRRIGATION LATERAL LINE: PVC SCHEDULE 40 1 1/4"	327.8 L.F.		
—————	IRRIGATION LATERAL LINE: PVC SCHEDULE 40 1 1/2"	380.5 L.F.		
—————	IRRIGATION LATERAL LINE: PVC SCHEDULE 40 2"	69.6 L.F.		
—————	IRRIGATION LATERAL LINE: PVC SCHEDULE 40 2 1/2"	123.6 L.F.		
—————	IRRIGATION MAINLINE: PVC SCHEDULE 40	96.7 L.F.		
—————	IRRIGATION MAINLINE: PVC SCHEDULE 40 1 1/4"	32.5 L.F.		
—————	IRRIGATION MAINLINE: PVC SCHEDULE 40 1 1/2"	16.2 L.F.		
—————	IRRIGATION MAINLINE: PVC SCHEDULE 40 2"	18.7 L.F.		
-----	PIPE SLEEVE: PVC CLASS 200 SDR 21	5.2 L.F.		

CRITICAL ANALYSIS

Generated: 2019-07-07 21:32

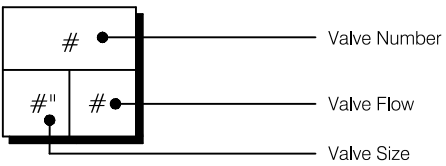
P.O.C. NUMBER: 01
Water Source Information:

FLOW AVAILABLE
Point of Connection Size: 2"
Flow Available: 78.62 gpm

PRESSURE AVAILABLE
Static Pressure at POC: 30.00 psi
Pressure Available: 30.00 psi

DESIGN ANALYSIS
Maximum Station Flow: 37.00 gpm
Flow Available at POC: 78.62 gpm
Residual Flow Available: 41.62 gpm

Pressure Req. at Critical Station: 24.73 psi
Loss for Fittings: 0.10 psi
Loss for Main Line: 0.99 psi
Loss for POC to Valve Elevation: 0.00 psi
Loss for Backflow: 0.00 psi
Critical Station Pressure at POC: 25.82 psi
Pressure Available: 30.00 psi
Residual Pressure Available: 4.18 psi

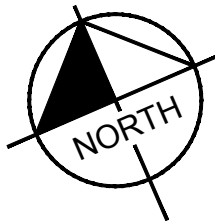
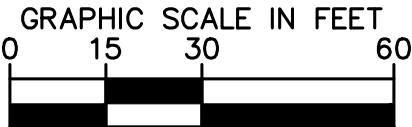


VALVE SCHEDULE

NUMBER	MODEL	SIZE	TYPE	GPM	PSI	PSI @ POC	PRECIP
1	HUNTER ICV-G-BSP-DC	2"	BUBBLER	37.00	24.29	25.45	3.40 in/h
2	HUNTER ICV-G-BSP-DC	2"	BUBBLER	28.00	24.62	25.65	3.40 in/h
3	HUNTER ICV-G-BSP-DC	2"	BUBBLER	22.00	24.74	25.82	3.40 in/h
4	HUNTER ICV-G-BSP-DC	2"	BUBBLER	16.00	24.72	25.51	3.40 in/h

NOTES:

1. CONTRACTOR TO VERIFY AVAILABLE PSI AT MAINLINE PRIOR TO INSTALLATION AND CONTACT THE LANDSCAPE ARCHITECT IF PRESSURE IS LESS THAN REQUIRED FOR SYSTEM.



CALL 2 WORKING DAYS
BEFORE YOU DIG

IT'S THE LAW!
DIAL 811

Know what's below.
Call before you dig.

SUNSHINE STATE ONE CALL OF FLORIDA, INC.

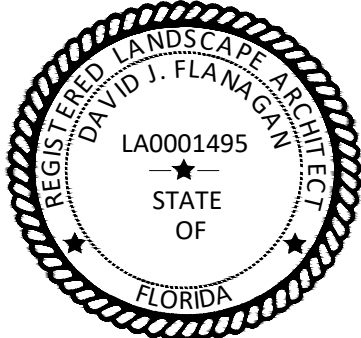
Kimley»Horn

© 2020 KIMLEY-HORN AND ASSOCIATES, INC.
100 SECOND AVENUE SOUTH, SUITE 150N
ST. PETERSBURG, FL 33701
PHONE: 727-547-3999
WWW.KIMLEY-HORN.COM CA 00000696

KHA PROJECT
148400041
DATE
MARCH 2020
SCALE AS SHOWN
DESIGNED BY KHA
DRAWN BY JLD
CHECKED BY DJF



COQUINA BEACH IPO



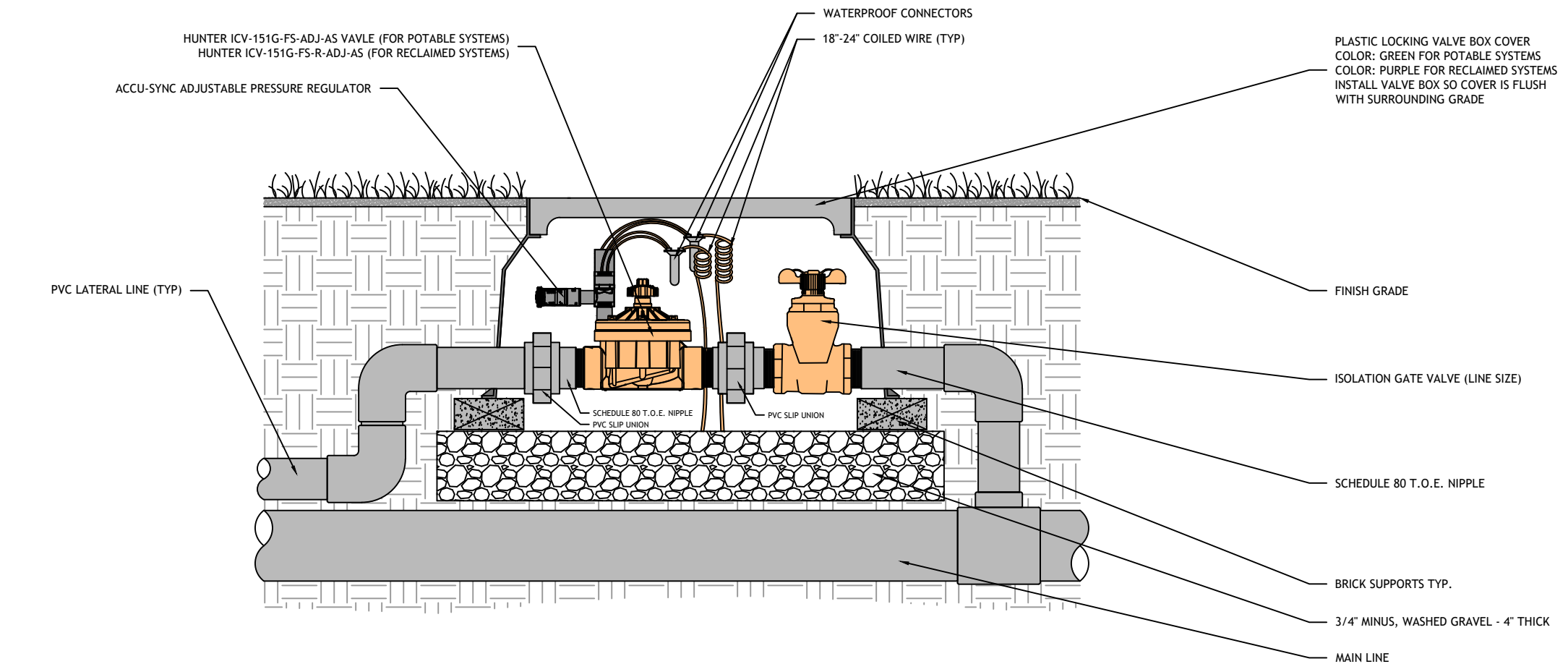
IRRIGATION PLAN

SHEET NUMBER

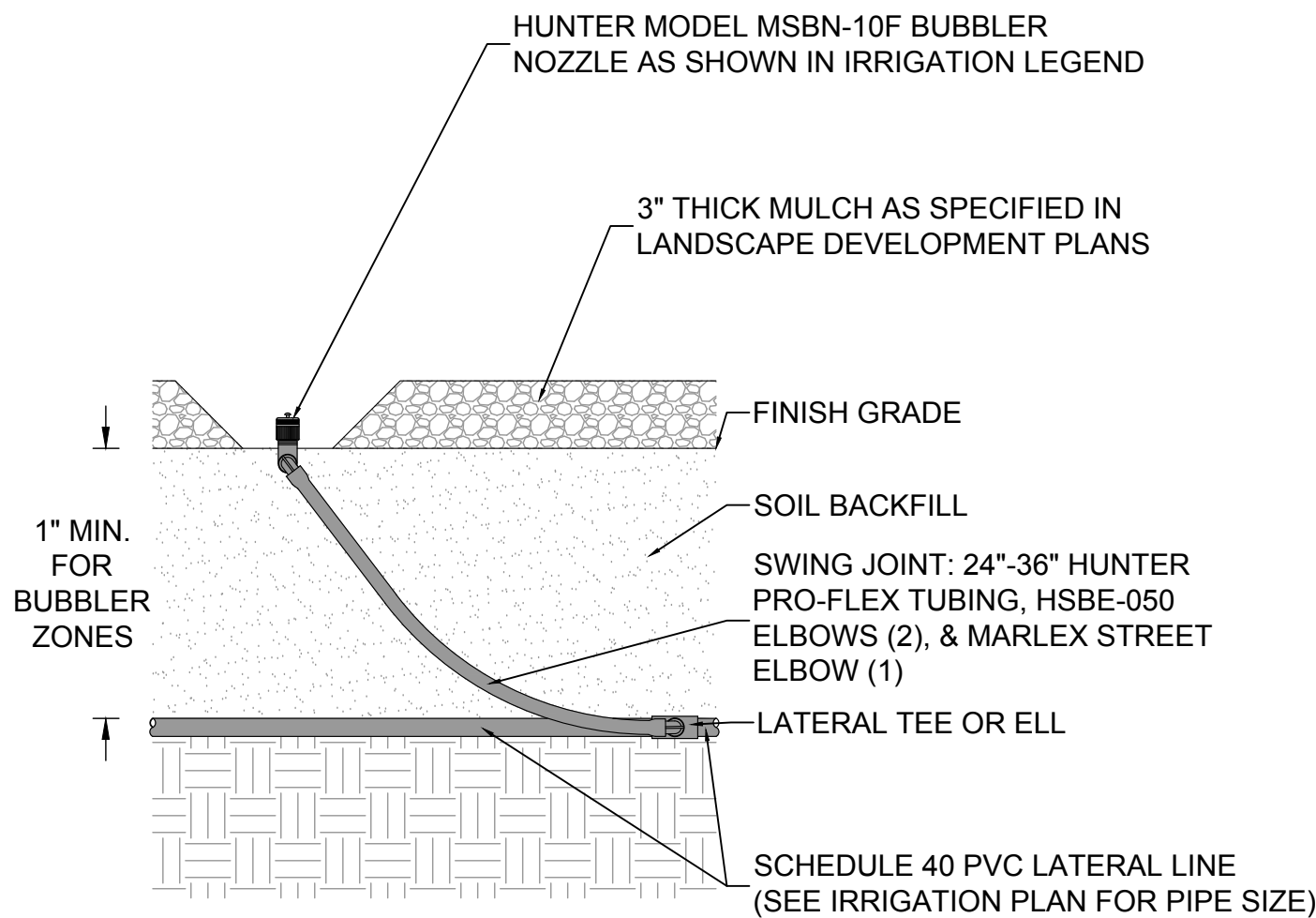
I-100

Noted By Douglas, Jennifer Sheet Set COQUINA BEACH IPO - LANDSCAPE Layout: I-150 IRRIGATION DETAILS April 15, 2020 09:03:23pm K:\STP_LALP\148400 - Manatee County\041 - Coquina Beach IPO\CADD\PlanSheets\I-1 IRRIGATION PLAN - COQUINA KEY IPO.dwg

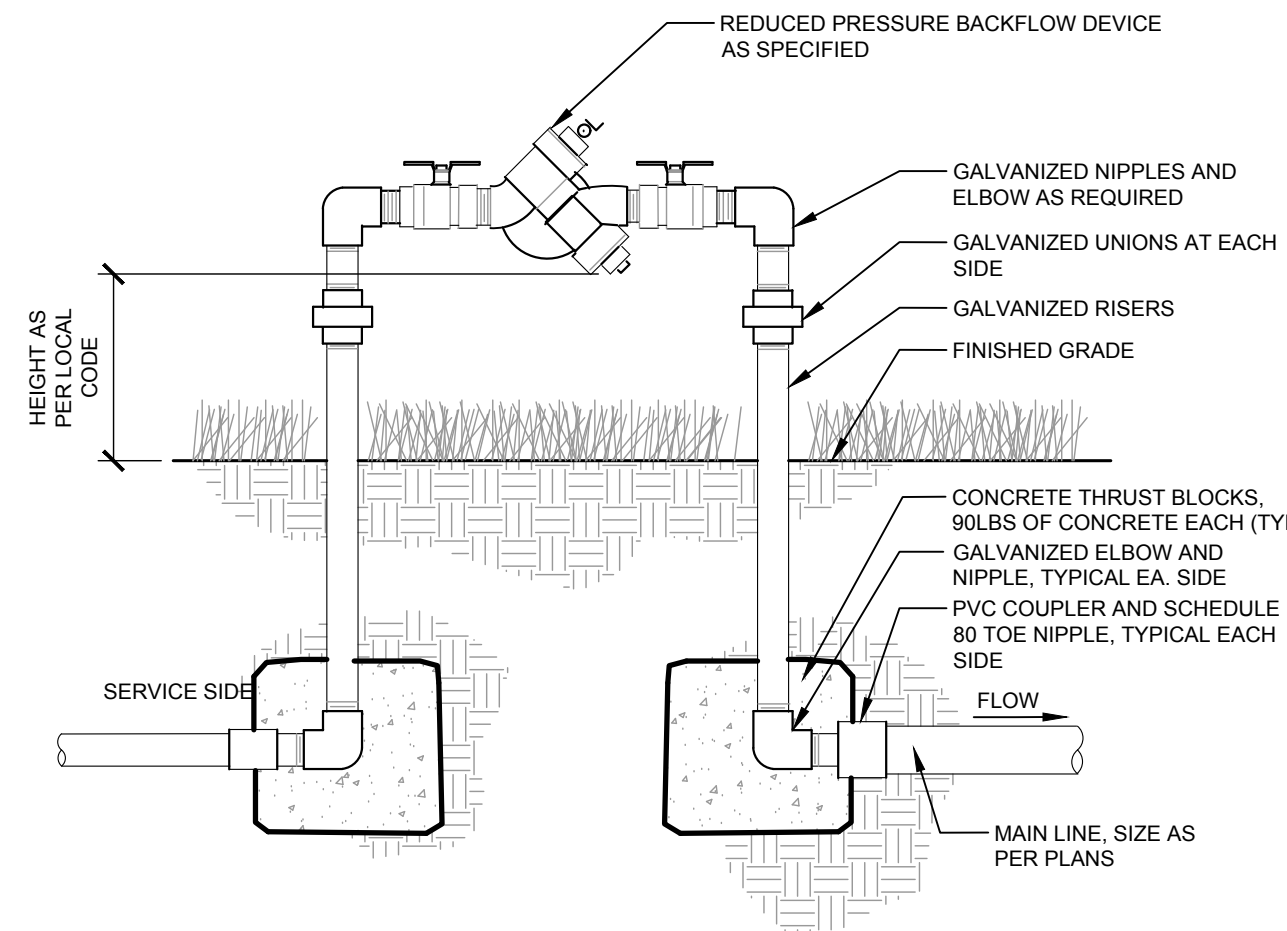
This document, together with the concepts and designs presented herein, as an instrument of service, is intended only for the specific purpose and client for which it was prepared. Reuse of and improper reliance on this document without written authorization and adaptation by Kimley-Horn and Associates, Inc. shall be without liability to Kimley-Horn and Associates, Inc.



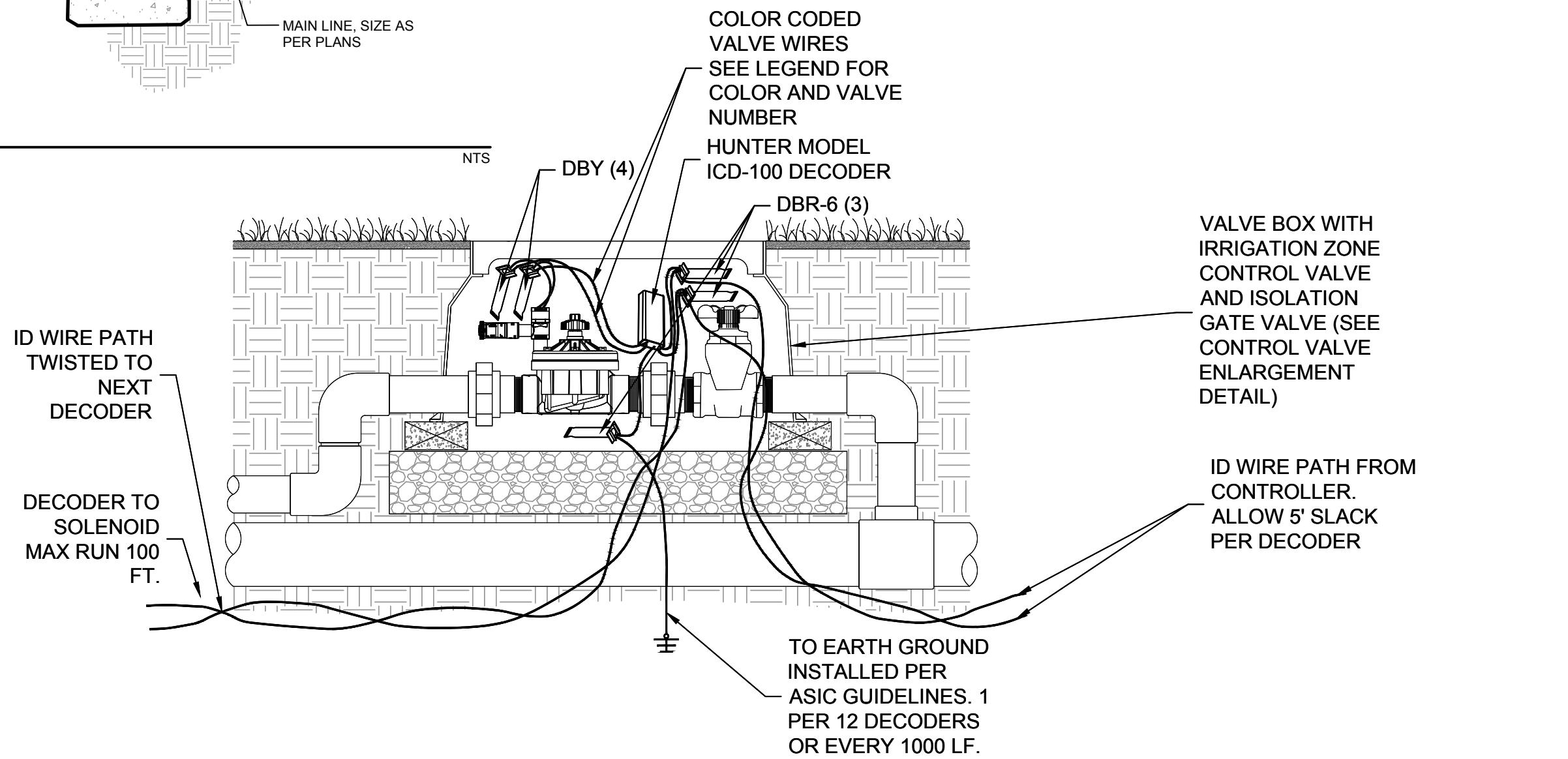
1 HUNTER ICV ZONE CONTROL VALVE W/ ISOLATION GLOBE VALVE - SECTION VIEW
1 1/2" = 1'-0" P-148-COQ-02



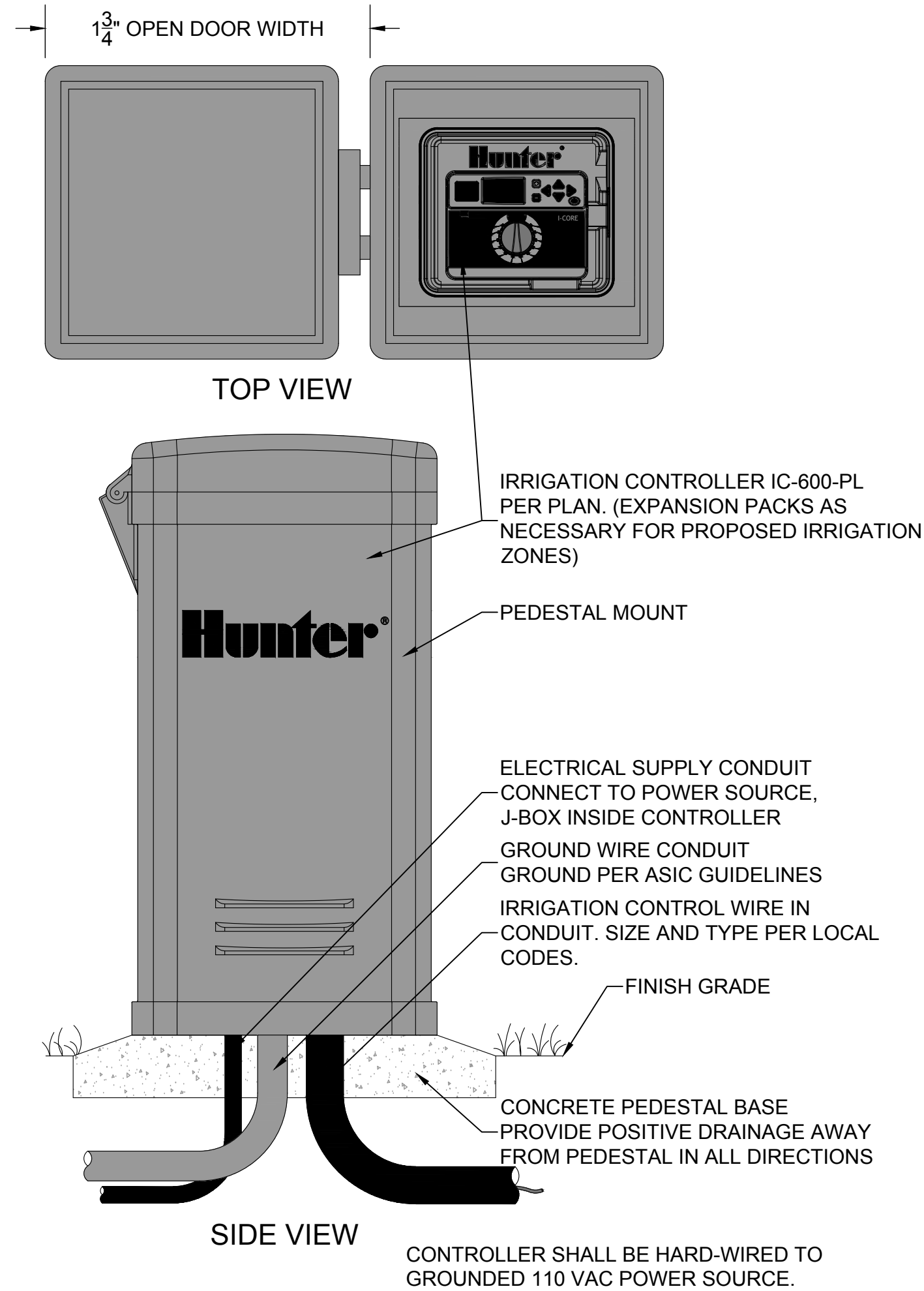
3 HUNTER BUBBLER MSBN - 10F DETAIL
1 1/2" = 1'-0" P-148-COQ-03



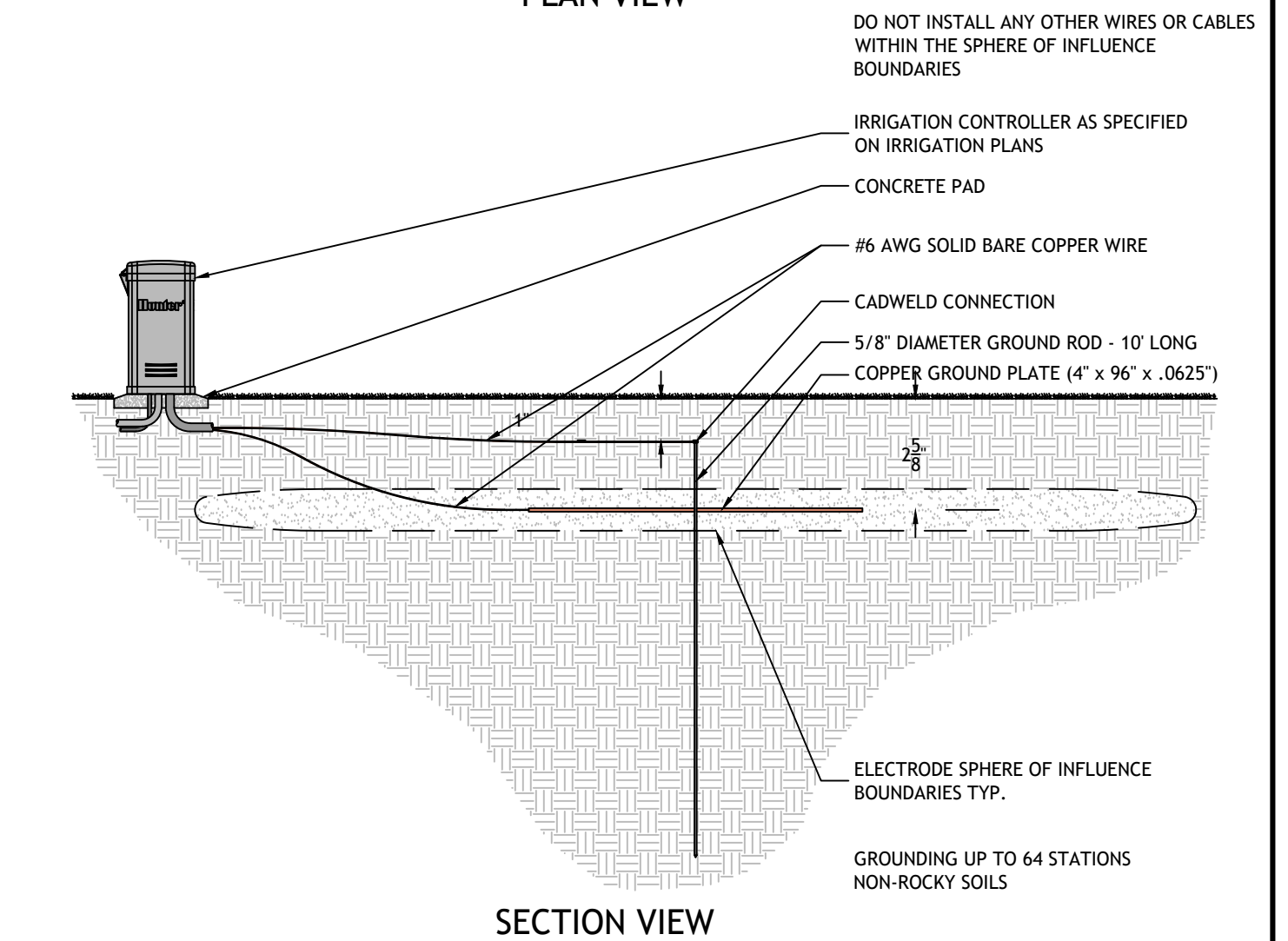
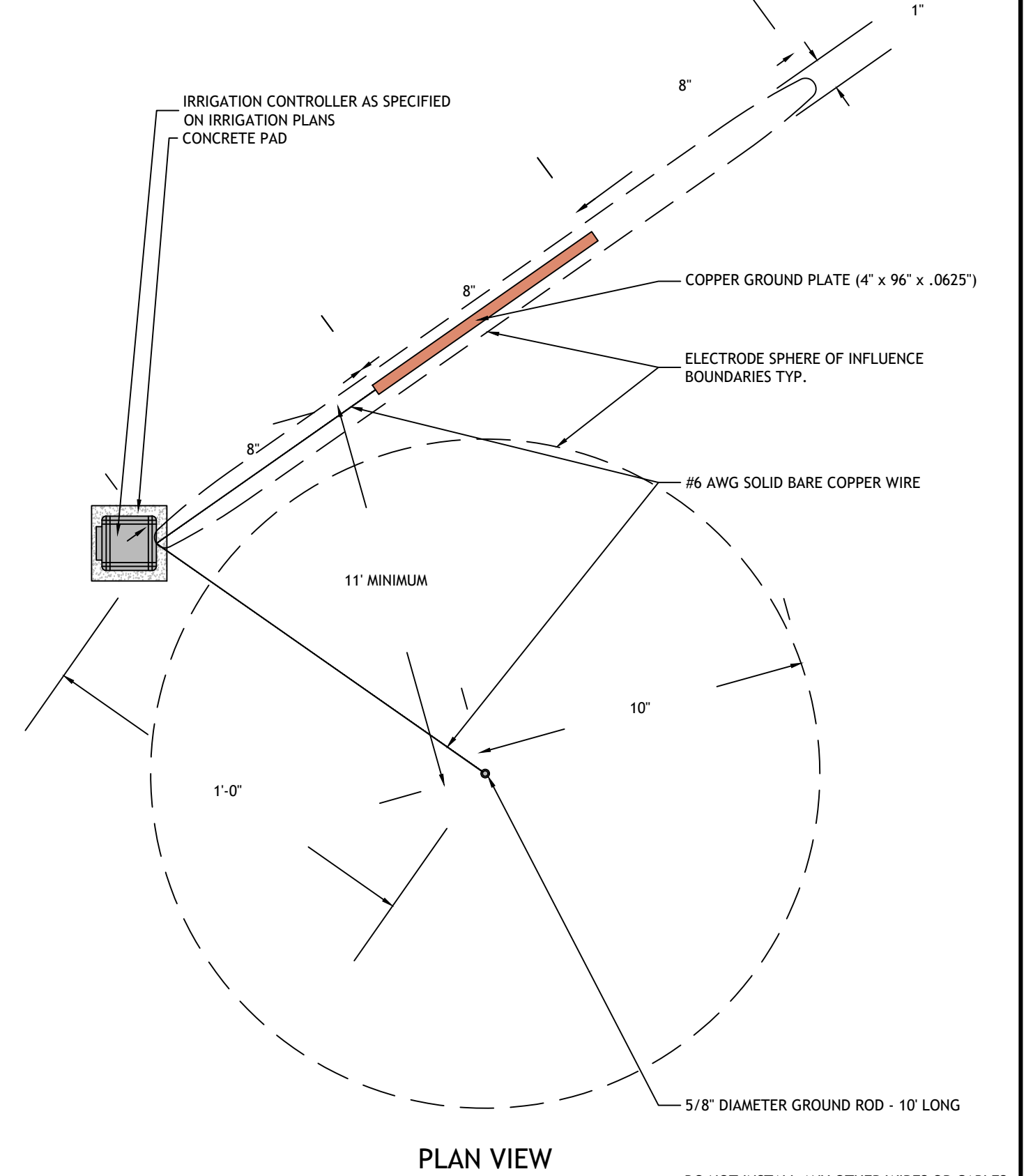
4 BACKFLOW PREVENTER
SECTION
SHEET



5 HUNTER ICD-100 DECODER DETAIL - SECTION VIEW
1 1/2" = 1'-0" P-148-COQ-05



2 HUNTER I-CORE CONTROLLER - PEDESTAL MOUNT
1 1/2" = 1'-0" P-148-COQ-08



6 2 WIRE SYSTEM GROUNDING DETAIL
1/4" = 1'-0" P-148-COQ-02

No.	REVISIONS	DATE	BY

 © 2020 KIMLEY-HORN AND ASSOCIATES, INC. 100 SECOND AVENUE SOUTH, SUITE 150N ST. PETERSBURG, FL 33701 PHONE: 727-547-3999 WWW.KIMLEY-HORN.COM CA 00000696	KHA PROJECT 148400041 DATE MARCH 2020 SCALE AS SHOWN DESIGNED BY KHA DRAWN BY JLD CHECKED BY DJF	MANATEE COUNTY	 COQUINA BEACH IPO FLORIDA	 DATE:	IRRIGATION DETAILS	SHEET NUMBER I-150
--------------------------------------------------------------------------------------------------------------------------------------------------------------------------------------------------------------------------------------------------------------	-----------------------------------------------------------------------------------------------------------------------	----------------	-----------------------------------------------------------------------------------------------------------------------	------------------------------------------------------------------------------------------------	--------------------	---------------------------

