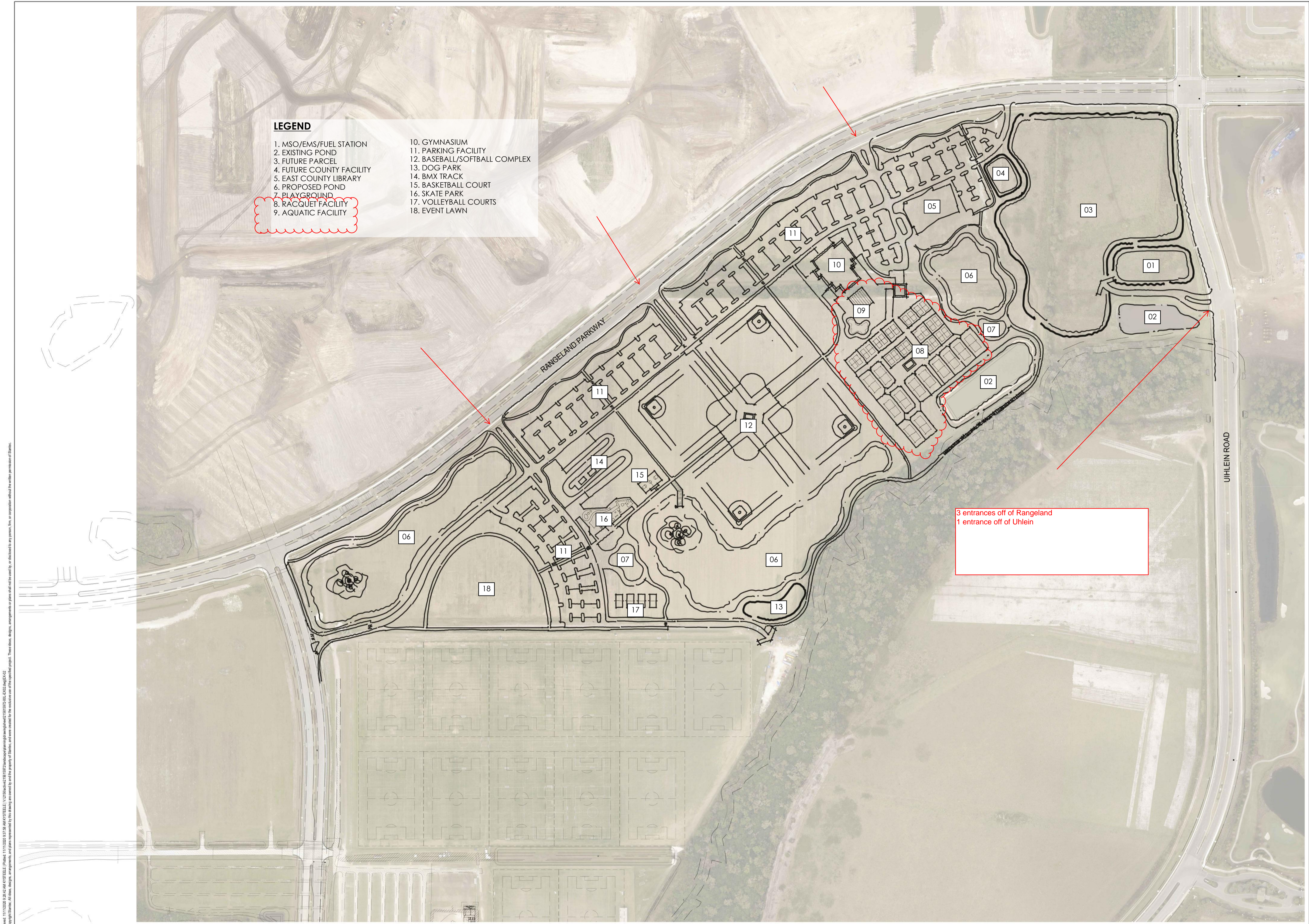


**LEGEND**

- |                           |                               |
|---------------------------|-------------------------------|
| 1. MSO/EMS/FUEL STATION   | 10. GYMNASIUM                 |
| 2. EXISTING POND          | 11. PARKING FACILITY          |
| 3. FUTURE PARCEL          | 12. BASEBALL/SOFTBALL COMPLEX |
| 4. FUTURE COUNTY FACILITY | 13. DOG PARK                  |
| 5. EAST COUNTY LIBRARY    | 14. BMX TRACK                 |
| 6. PROPOSED POND          | 15. BASKETBALL COURT          |
| 7. PLAYGROUND             | 16. SKATE PARK                |
| 8. RACQUET FACILITY       | 17. VOLLEYBALL COURTS         |
| 9. AQUATIC FACILITY       | 18. EVENT LAWN                |

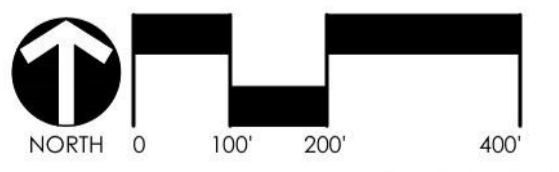


3 entrances off of Rangeland  
1 entrance off of Uhlein

MANATEE COUNTY  
**EAST COUNTY FACILITIES**  
FLORIDA  
MASTER PLAN DRAFT

PRELIMINARY PLAN  
NOT FOR CONSTRUCTION

5	
4	
3	
2	
1	
SUB. DATE	SUBMITAL DESCRIPTION



DATE: NOVEMBER 2020  
EMPLOYEE: KS  
PROJECT #: 215615972

Saved: 11/10/2020 9:38:44 AM KSTEELE (P:\01510200\31738 MANATEE\1\01510200\31738 MANATEE\1\01510200\31738 MANATEE\1\01510200\31738 MANATEE\1\01510200\31738 MANATEE.dwg) 01510200-0001.dwg  
 Copyright © 2020 Stantec, Inc. All rights reserved. This drawing is the property of Stantec, Inc. and is loaned to the customer for the customer's use only. It is not to be reproduced, stored in a retrieval system, or transmitted in any form or by any means, electronic, mechanical, photocopying, recording, or by any information storage and retrieval system, without the prior written permission of Stantec.