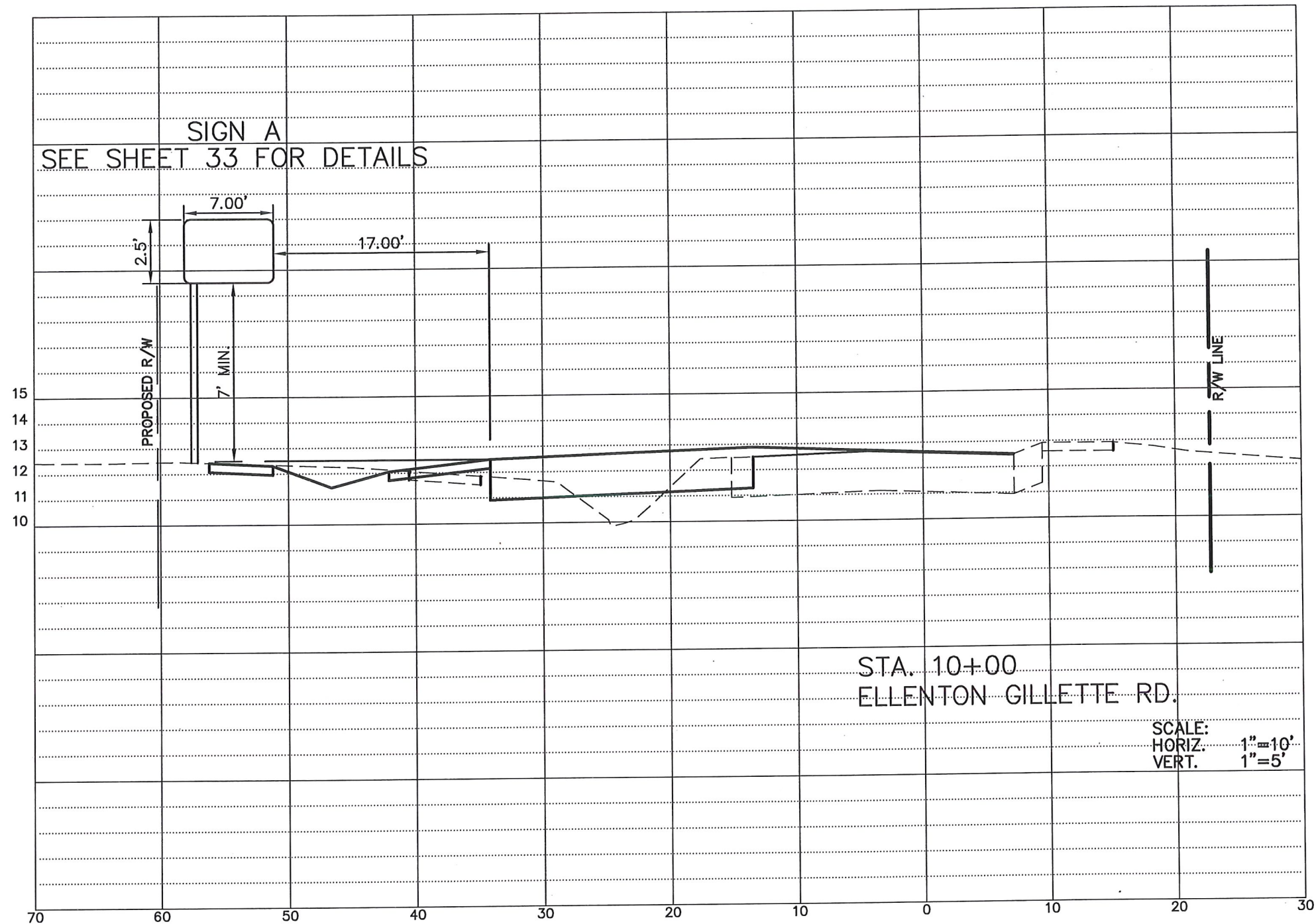


Z:\Master Drawing\ELLENTON-GILLETTE - US 301\ELLENTON GILLETTE - US 301 FOOTELLGILL-301-FOOT-GUIDE_SIGN.dwg, 12/19/2017 11:52:42 AM, pte, 1:10



SIGNING CROSS SECTION
US 301 AT ELLENTON GILLETTE ROAD,
INTERSECTION IMPROVEMENTS

REVISIONS	

LOMBARDO, FOLEY & KOLARIK, INC.
Consulting Engineers, Surveyors and Planners
P.O. Box 186323 4th Street West • Palmetto, Florida 34221 • (941) 722-4561

PROJECT ENGINEER
STATE OF
JOHN R. FOLEY
38630 FLORIDA
P.E. REG. NO.

DESIGN <u>JRF.</u>	DATE <u>05/20/15</u>
DRAWN <u>P.E.</u>	SCALE <u>AS SHOWN</u>
APPR <u>JRF.</u>	JOB NO. <u>7870</u>

SHEET NO.
34 / **44**

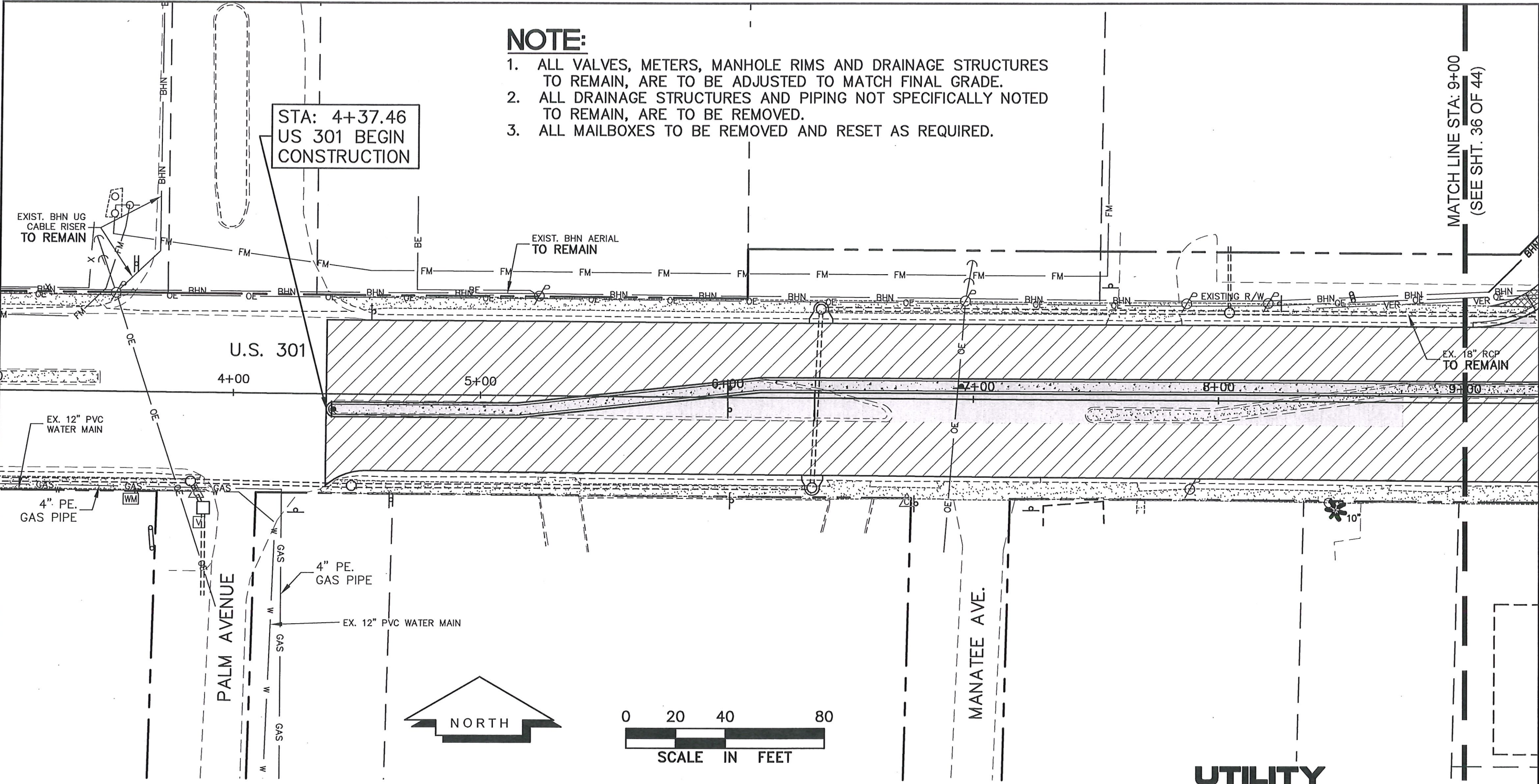
Z:\Master Drawing\ELLENTON-GILLETTE - US 301\ELLENTON GILLETTE - US 301 FDOT\ELLGILL-301-FDOT-UTACC.dwg, 12/19/2017 11:55:49 AM, pete, 1:40

NOTE:

- 1. ALL VALVES, METERS, MANHOLE RIMS AND DRAINAGE STRUCTURES TO REMAIN, ARE TO BE ADJUSTED TO MATCH FINAL GRADE.
- 2. ALL DRAINAGE STRUCTURES AND PIPING NOT SPECIFICALLY NOTED TO REMAIN, ARE TO BE REMOVED.
- 3. ALL MAILBOXES TO BE REMOVED AND RESET AS REQUIRED.

STA: 4+37.46
US 301 BEGIN
CONSTRUCTION

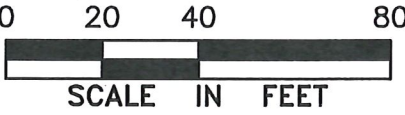
MATCH LINE STA: 9+00
(SEE SHT. 36 OF 44)



LEGEND

- NEW ROADWAY CONSTRUCTION
- MILLING AND OVERLAY LIMITS
- EXISTING SIDEWALK
- PROPOSED SIDEWALK, CONC. DRIVE
- BHN ——— PROPOSED BHN AERIAL
- BHN ——— EXIST. BRIGHTHOUSE NETWORK

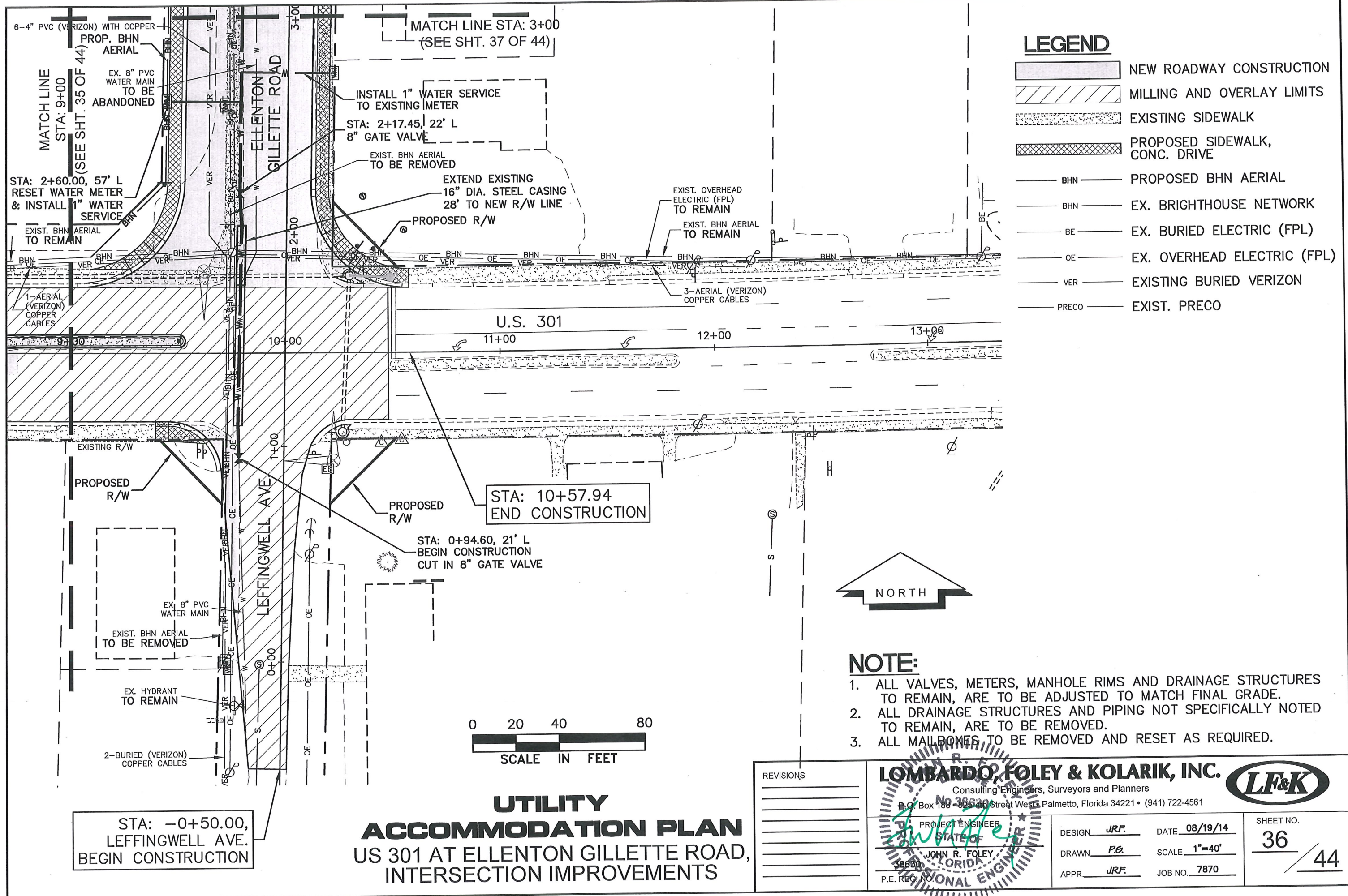
- BE ——— EXIST. BURIED ELECTRIC (FPL)
- OE ——— EXIST. OVERHEAD ELECTRIC (FPL)
- VER ——— EXISTING BURIED VERIZON
- PRECO ——— EXIST. PRECO



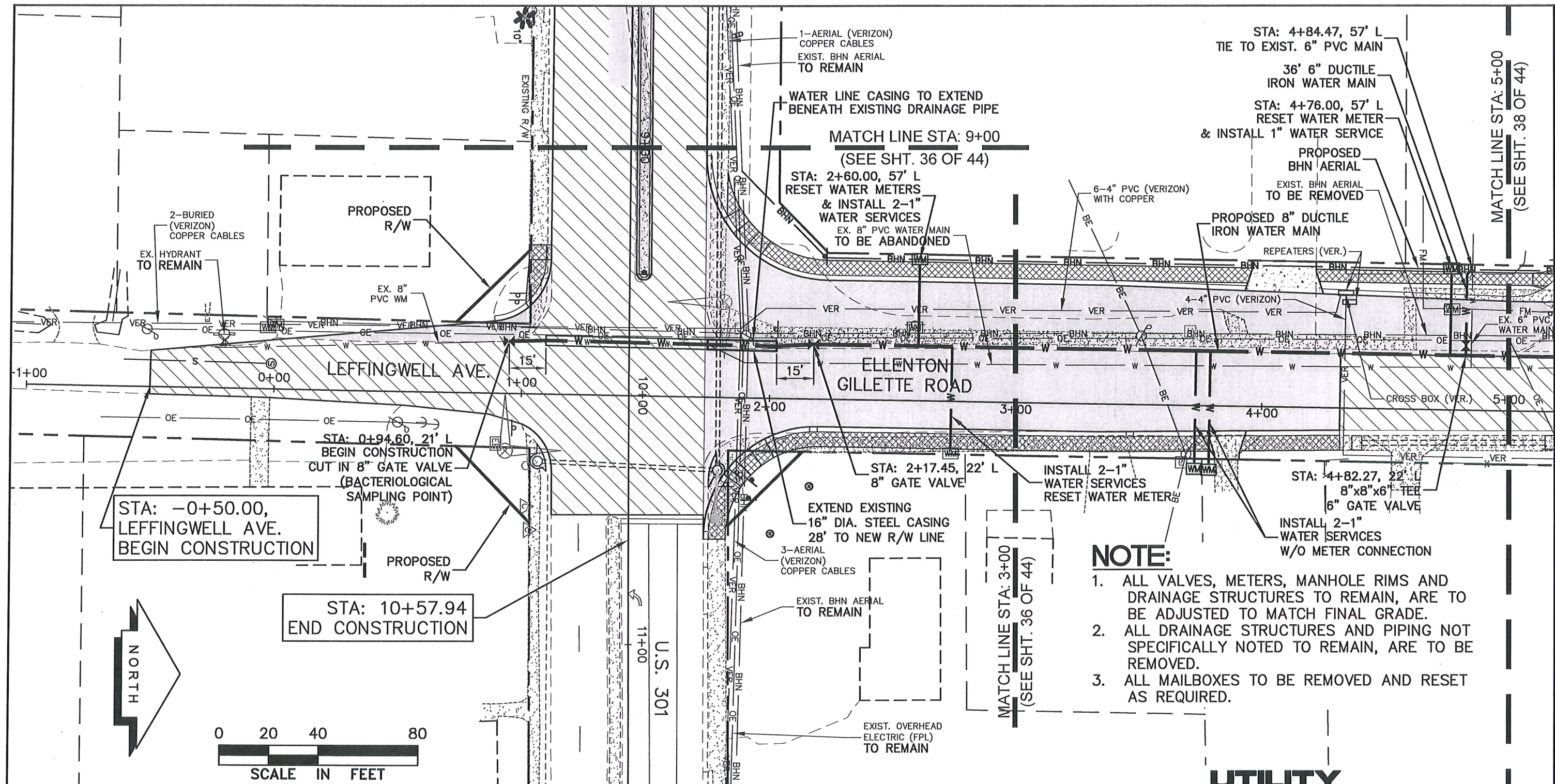
**UTILITY
ACCOMMODATION PLAN**
US 301 AT ELLENTON GILLETTE ROAD,
INTERSECTION IMPROVEMENTS

REVISIONS	LOMBARDO, FOLEY & KOLARIK, INC. Consulting Engineers, Surveyors and Planners P.O. Box 1680, 325 4th Street West • Palmetto, Florida 34221 • (941) 722-4561			
	PROJECT ENGINEER STATE OF FLORIDA JOHN R. FOLEY Professional Engineer No. 38830			
	DESIGN <u>JRF.</u>	DATE <u>08/19/14</u>		SHEET NO. 35 44
	DRAWN <u>P.B.</u>	SCALE <u>1"=40'</u>		
	APPR <u>JRF.</u>	JOB NO. <u>7870</u>		

Z:\Master Drawing\ELLENTON-GILLETTE - US 301\ELLENTON GILLETTE - US 301 FDOT\ELLGILL-301-FDOT-UTACC.dwg, 12/19/2017 11:56:11 AM, pete, 1:40



Z:\Master Drawing\ELLENTON-GILLETTE - US 301.FDOT\ELLGILL-301-FDOT-UTACC.dwg, 12/19/2017 11:56:29 AM, pte, 1:40



NOTE:

1. ALL VALVES, METERS, MANHOLE RIMS AND DRAINAGE STRUCTURES TO REMAIN, ARE TO BE ADJUSTED TO MATCH FINAL GRADE.
2. ALL DRAINAGE STRUCTURES AND PIPING NOT SPECIFICALLY NOTED TO REMAIN, ARE TO BE REMOVED.
3. ALL MAILBOXES TO BE REMOVED AND RESET AS REQUIRED.

UTILITY

ACCOMMODATION PLAN

US 301 AT ELLENTON GILLETTE ROAD, INTERSECTION IMPROVEMENTS

LEGEND

- NEW ROADWAY CONSTRUCTION
- MILLING AND OVERLAY LIMITS
- EXISTING SIDEWALK
- PROPOSED SIDEWALK, CONC. DRIVE
- PROPOSED BHN AERIAL
- EXIST. BRIGHTHOUSE NETWORK

- BE ——— EXIST. BURIED ELECTRIC (FPL)
- OE ——— EXIST. OVERHEAD ELECTRIC (FPL)
- VER ——— EXISTING BURIED VERIZON
- PRECO ——— EXIST. PRECO

REVISIONS

LOMBARDO, FOLEY & KOLARIK, INC.
Consulting Engineers, Surveyors and Planners
P.O. Box 188 • 633 4th Street West • Palmetto, Florida 34221 • (941) 722-4561

PROJECT ENGINEER
JOHN R. FOLEY
P.E. REG. NO. 38630

DESIGN JRF. DATE 08/19/14

DRAWN P.B. SCALE 1"=40'

APPR JRF. JOB NO. 7870

SHEET NO.
37
44

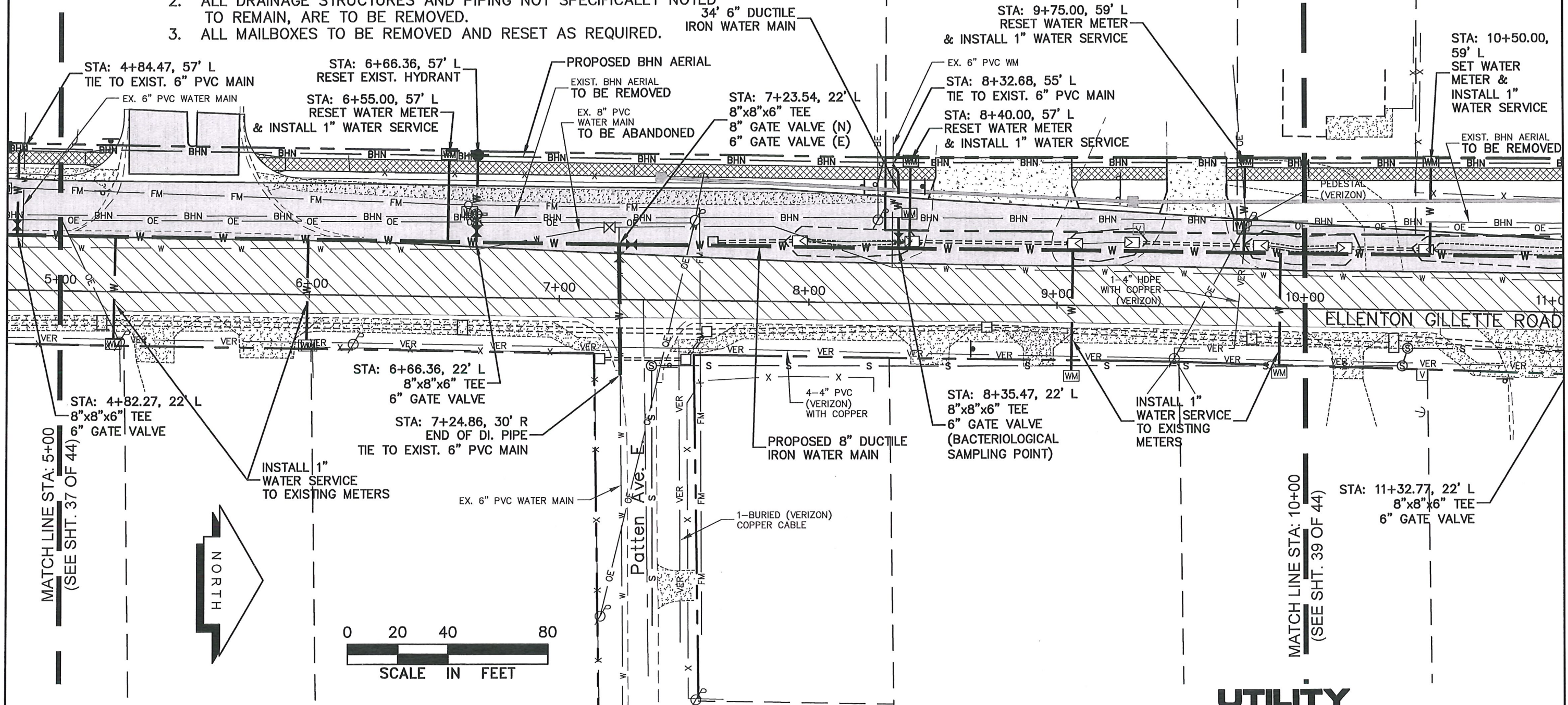
MATCH LINE STA: 5+00
(SEE SHT. 38 OF 44)

MATCH LINE STA: 3+00
(SEE SHT. 36 OF 44)

Z:\Master Drawing\ELLENTON-GILLETTE - US 301\ELLENTON-GILLETTE - US 301 FDOT\ELLGILL-301-FDOT-UTACC.dwg, 12/19/2017 11:56:42 AM, pete, 1:40

NOTE:

1. ALL VALVES, METERS, MANHOLE RIMS AND DRAINAGE STRUCTURES TO REMAIN, ARE TO BE ADJUSTED TO MATCH FINAL GRADE.
2. ALL DRAINAGE STRUCTURES AND PIPING NOT SPECIFICALLY NOTED TO REMAIN, ARE TO BE REMOVED.
3. ALL MAILBOXES TO BE REMOVED AND RESET AS REQUIRED.



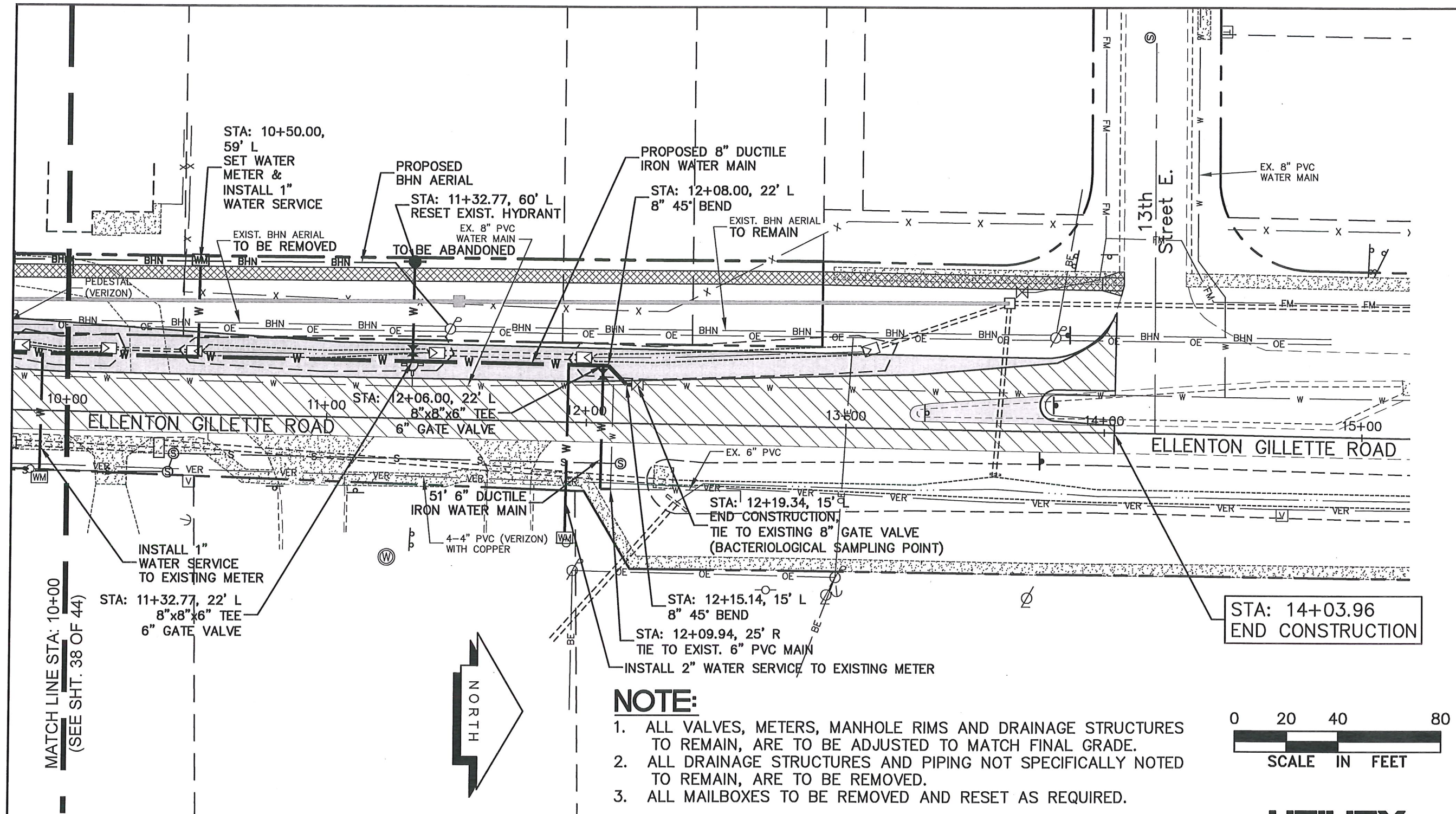
LEGEND

- NEW ROADWAY CONSTRUCTION
- MILLING AND OVERLAY LIMITS
- EXISTING SIDEWALK
- PROPOSED SIDEWALK,
CONC. DRIVE
- PROPOSED BHN AERIAL
- EXIST. BRIGHTHOUSE NETWORK

- BE EXIST. BURIED ELECTRIC (FPL)
- OE EXIST. OVERHEAD ELECTRIC (FPL)
- VER EXISTING BURIED VERIZON
- PRECO EXIST. PRECO

**UTILITY
ACCOMMODATION PLAN**
US 301 AT ELLENTON GILLETTE ROAD,
INTERSECTION IMPROVEMENTS

REVISIONS	LOMBARDO, FOLEY & KOLARIK, INC. Consulting Engineers, Surveyors and Planners P.O. Box 130022, 4th Street West • Palmetto, Florida 34221 • (941) 722-4561		
	PROJECT ENGINEER STATE OF FLORIDA JOHN R. FOLEY Professional Engineer		
	DESIGN <u>JRF.</u>	DATE <u>08/19/14</u>	
	DRAWN <u>PG.</u>	SCALE <u>1"=40'</u>	
APPR. <u>JRF.</u>		JOB NO. <u>7870</u>	SHEET NO. 38 44



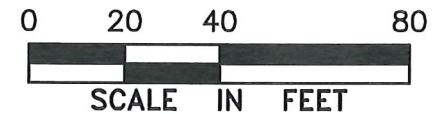
LEGEND

	NEW ROADWAY CONSTRUCTION
	MILLING AND OVERLAY LIMITS
	EXISTING SIDEWALK
	PROPOSED SIDEWALK, CONC. DRIVE
	PROPOSED BHN AERIAL
	EXIST. BRIGHTHOUSE NETWORK

	EXIST. BURIED ELECTRIC (FPL)
	EXIST. OVERHEAD ELECTRIC (FPL)
	EXISTING BURIED VERIZON
	EXIST. PRECO

NOTE:

- ALL VALVES, METERS, MANHOLE RIMS AND DRAINAGE STRUCTURES TO REMAIN, ARE TO BE ADJUSTED TO MATCH FINAL GRADE.
- ALL DRAINAGE STRUCTURES AND PIPING NOT SPECIFICALLY NOTED TO REMAIN, ARE TO BE REMOVED.
- ALL MAILBOXES TO BE REMOVED AND RESET AS REQUIRED.



UTILITY ACCOMMODATION PLAN US 301 AT ELLENTON GILLETTE ROAD, INTERSECTION IMPROVEMENTS

LOMBARDO, FOLEY & KOLARIK, INC.

Consulting Engineers, Surveyors and Planners
P.O. Box 188 • 825 4th Street West • Palmetto, Florida 34221 • (941) 722-4561

PROJECT ENGINEER

JOHN R. FOLEY

36630

P.E. REG. NO.

DESIGN JRF.

DATE 08/19/14

DRAWN P.G.

SCALE 1"=40'

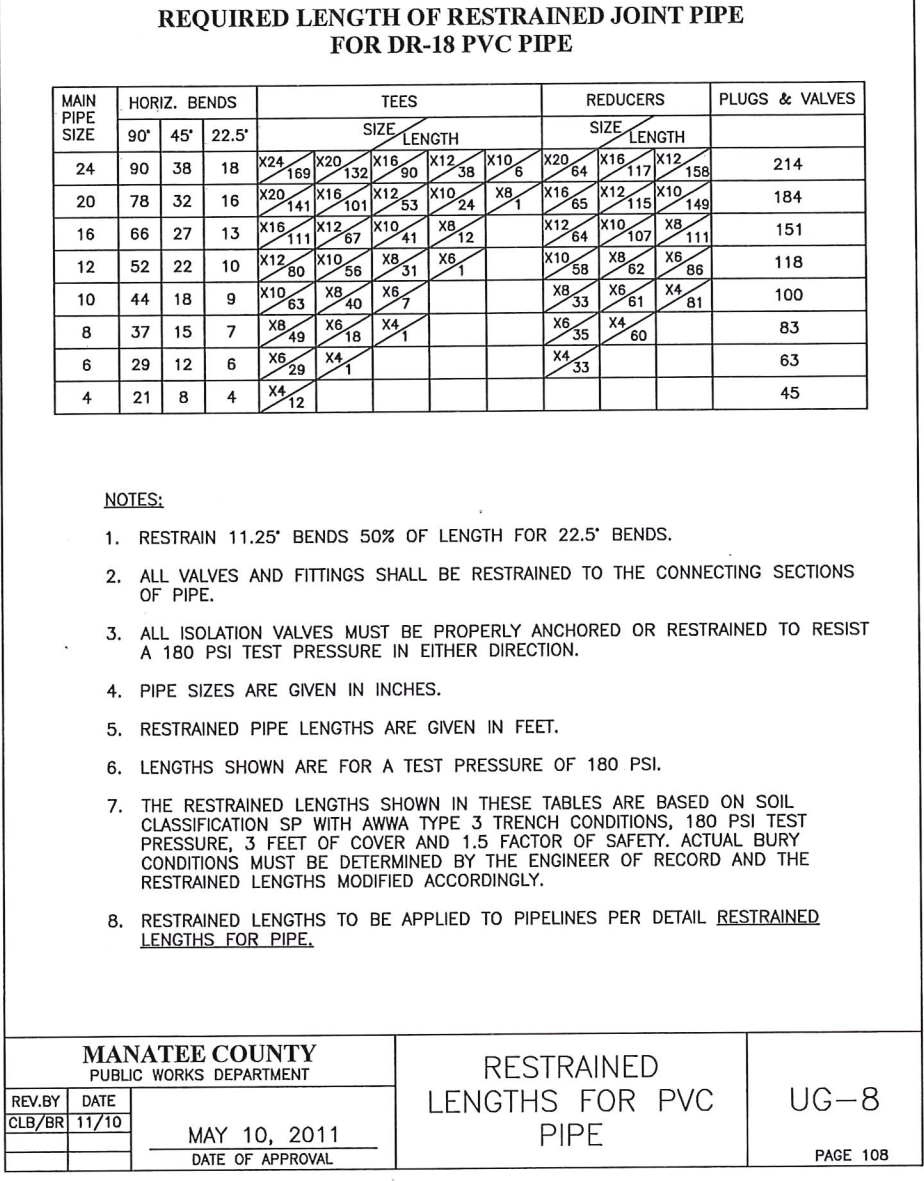
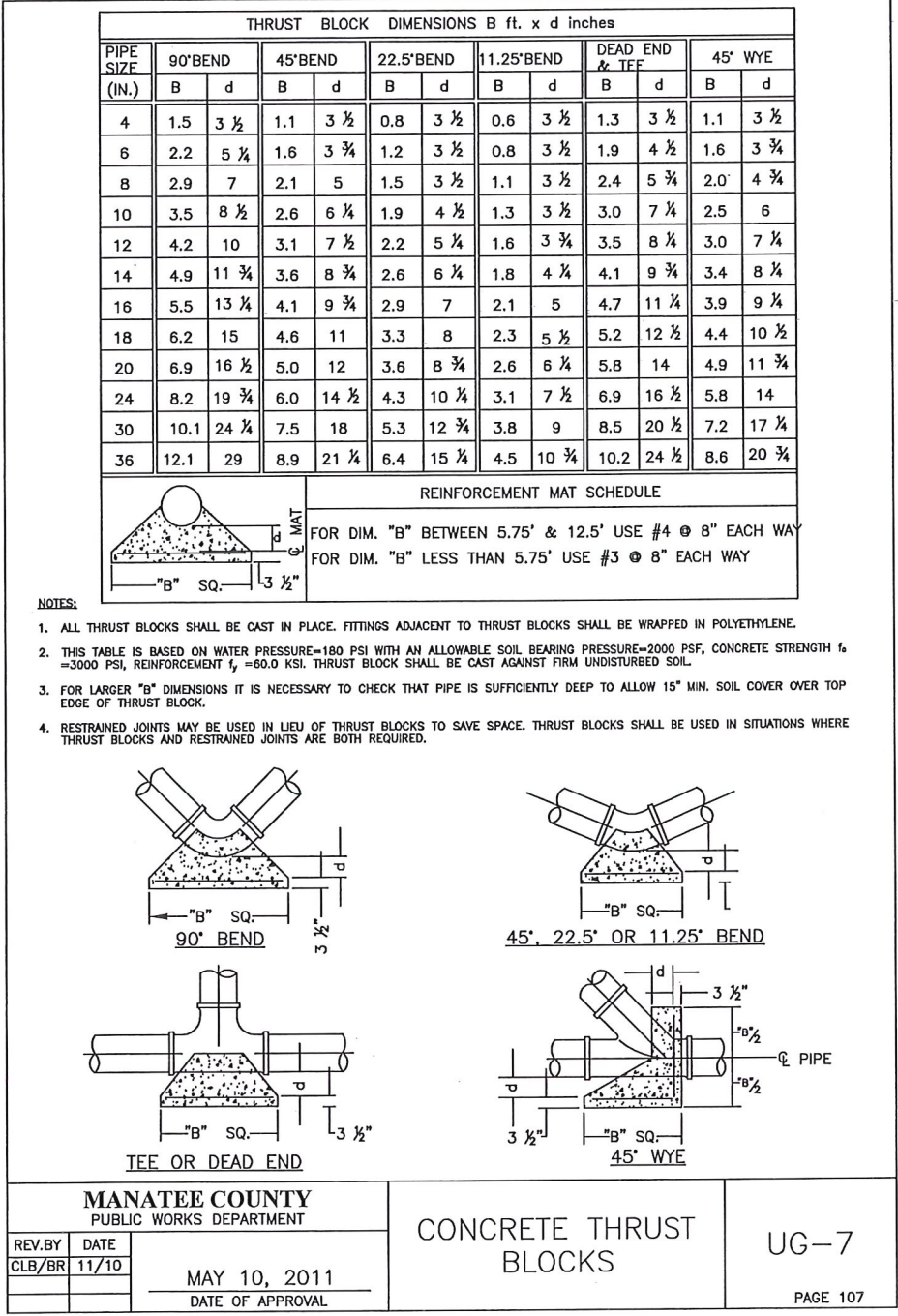
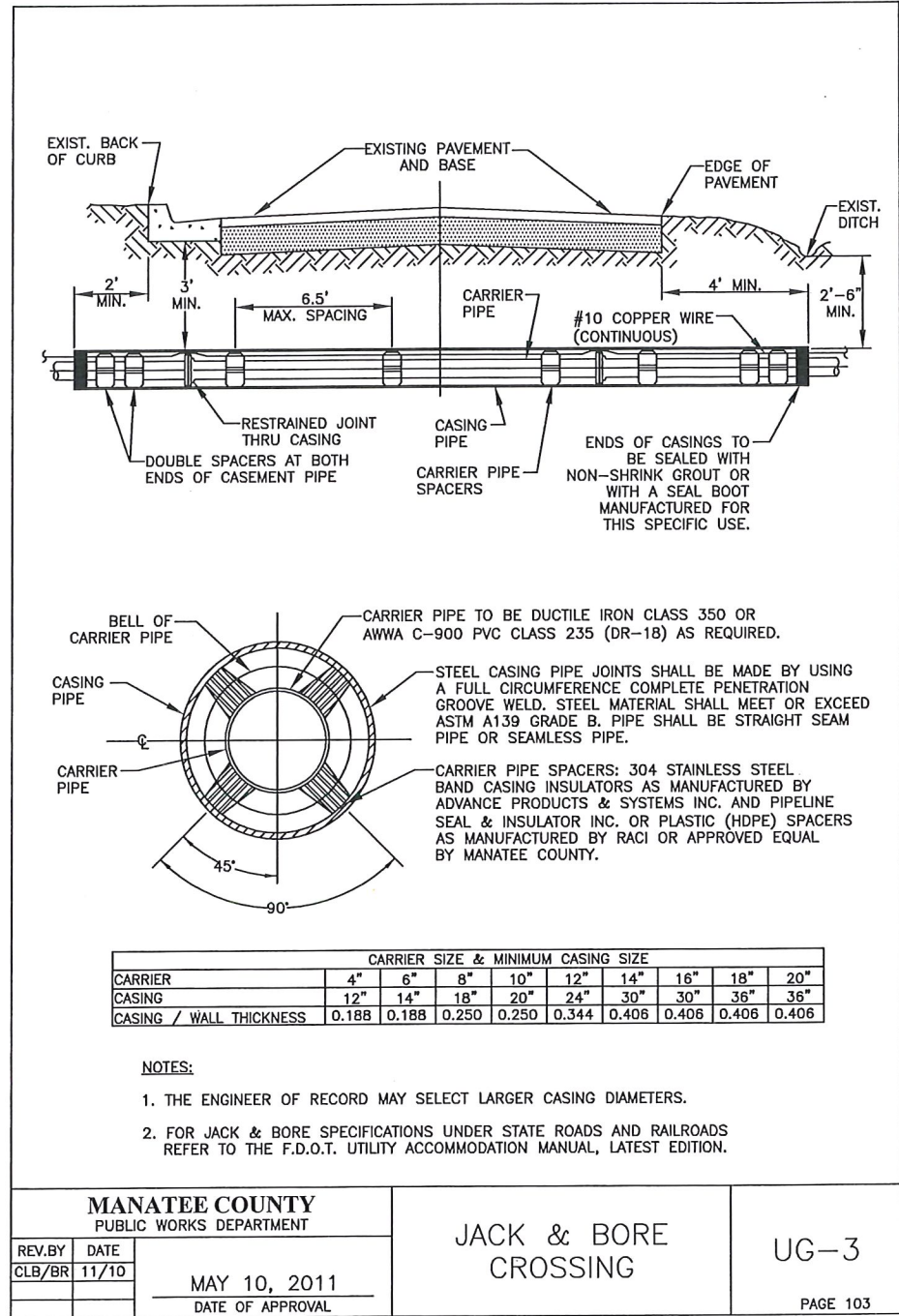
APPR JRF.

JOB NO. 7870

SHEET NO.

39

44



UTILITY ACCOMMODATION DETAILS

US 301 AT ELLENTON GILLETTE ROAD, INTERSECTION IMPROVEMENTS

LOMBARDO, FOLEY & KOLARIK, INC.
Consulting Engineers, Surveyors and Planners
P.O. Box 188 • 825 4th Street West • Palmetto, Florida 34221 • (941) 722-4561

PROJECT ENGINEER
JOHN R. FOLEY
36636
P.E. REG. NO.

DESIGN JRF. DATE 11/10/14
DRAWN P.B. SCALE NONE
APPR. JRF. JOB NO. 7870

SHEET NO.
40
44

Z:\Master Drawing\ELLENTON-GILLETTE - US 301 FDOT\ELLGILL-301-FDOT-UD.dwg, 12/19/2017 11:57:14 AM, pete, 1:4

REQUIRED LENGTH OF RESTRAINED JOINT PIPE
FOR DIP (POLY-WRAPPED)

MAIN PIPE SIZE	HORIZ. BENDS			TEES											REDUCERS					PLUGS & VALVES
	90°	45°	22.5°	SIZE					LENGTH						SIZE		LENGTH			
				x36	x30	x24	x20	x16	x12	x30	x24	x20	x16	x12	x10	x8				
36	142	59	28	x36 393	x30 318	x24 232	x20 165	x16 84	x12 1	x30 137	x24 247	x20 309	x16 359	453						
30	124	51	25	x30 333	x24 252	x20 189	x16 115	x12 23	x10 1	x24 137	x20 213	x16 276		391						
24	106	44	21	x24 270	x20 211	x16 143	x12 81	x10 10	x8 1	x20 98	x16 178	x12 241		327						
20	92	38	18	x20 225	x16 161	x12 85	x10 39	x8 1	x6 1	x16 98	x12 176	x10 227		280						
16	77	32	15	x16 177	x12 107	x10 65	x8 19	x6 1	x4 1	x12 98	x10 163	x8 169		231						
12	61	25	12	x12 127	x10 89	x8 50	x6 1	x4 1	x2 1	x10 51	x8 96	x6 131		181						
10	52	22	10	x10 101	x8 64	x6 11	x4 1	x2 1	x1 1	x8 58	x6 94	x4 125		153						
8	44	18	9	x8 78	x6 30	x4 1	x2 1	x1 1	x0 1	x6 54	x4 92	x2 1		128						
6	34	14	7	x6 46	x4 1	x2 1	x1 1	x0 1	x0 1	x4 50	x2 1	x1 1		98						
4	24	10	5	x4 19	x2 1	x1 1	x0 1	x0 1	x0 1	x2 1	x1 1	x0 1		69						

REQUIRED LENGTH OF RESTRAINED JOINT PIPE
FOR DIP (NON-WRAPPED)

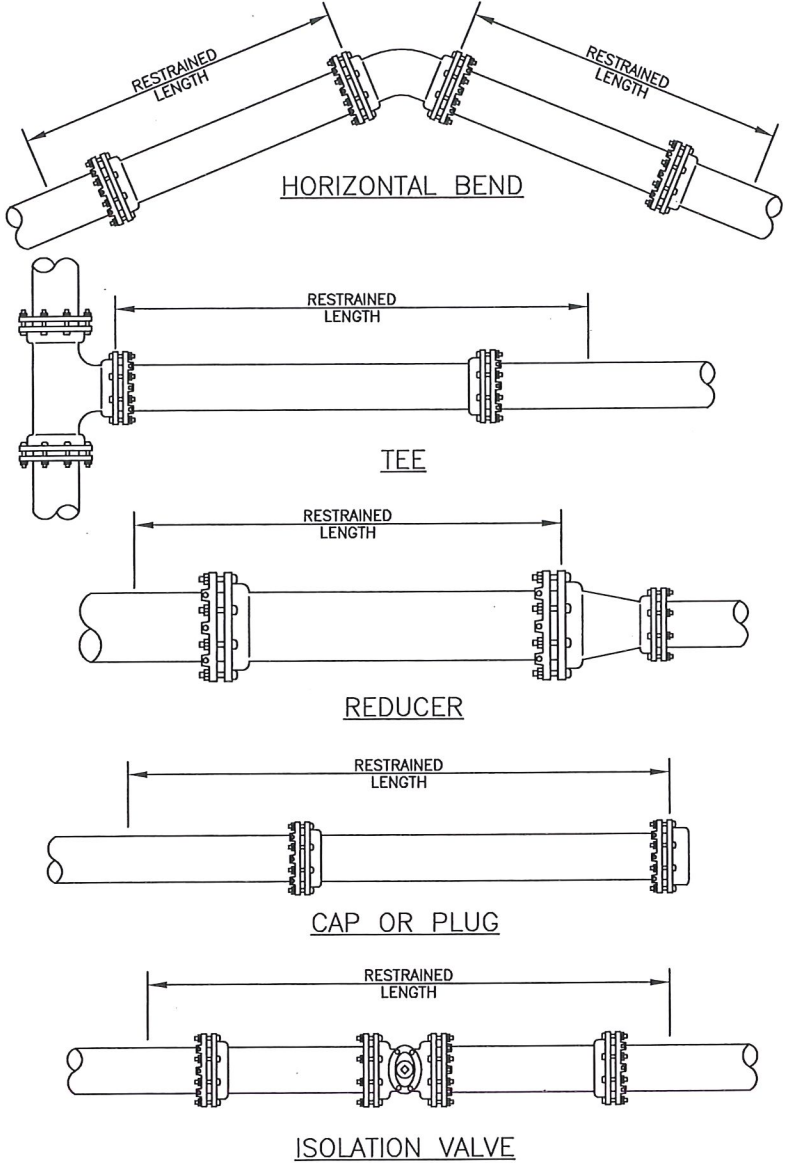
MAIN PIPE SIZE	HORIZ. BENDS			TEES												REDUCERS					PLUGS & VALVES			
	90°	45°	22.5°	SIZE						LENGTH						SIZE								
				SIZE		LENGTH		SIZE		LENGTH		SIZE		LENGTH										
36	100	42	20	x36	163	x30	132	x24	96	x20	68	x16	35	x12	1	x30	57	x24	103	x20	128	x16	149	188
30	88	37	18	x30	138	x24	104	x20	78	x16	48	x12	10	x10	1	x24	57	x20	88	x16	114			162
24	75	31	15	x24	112	x20	87	x16	69	x12	25	x10	4	x8	1	x20	40	x16	74	x12	100			135
20	65	27	13	x20	93	x16	67	x12	35	x10	16	x8	1			x16	41	x12	73	x10	94			116
16	54	22	11	x16	73	x12	44	x10	27	x8	8	x6	1			x12	41	x10	68	x8	70			96
12	43	18	8	x12	53	x10	37	x8	21	x6	1					x10	37	x8	40	x6	54			75
10	37	15	7	x10	42	x8	26	x6	5							x8	21	x6	39	x4	52			63
8	30	13	6	x8	32	x6	12	x4	1							x6	22	x4	38					53
6	24	10	5	x6	19	x4	1									x4	21							41
4	17	7	3	x4	8																			29

NOTE:
SEE RESTRAINED LENGTHS FOR PVC PIPE DETAIL FOR NOTES 1 THROUGH 8 THAT ARE ALSO APPLICABLE TO RESTRAINED LENGTHS FOR DIP.

MANATEE COUNTY PUBLIC WORKS DEPARTMENT			RESTRAINED LENGTHS FOR DIP	UG-9
REV. BY CLB/BR	DATE 11/10	MAY 10, 2011 DATE OF APPROVAL		

PAGE 109

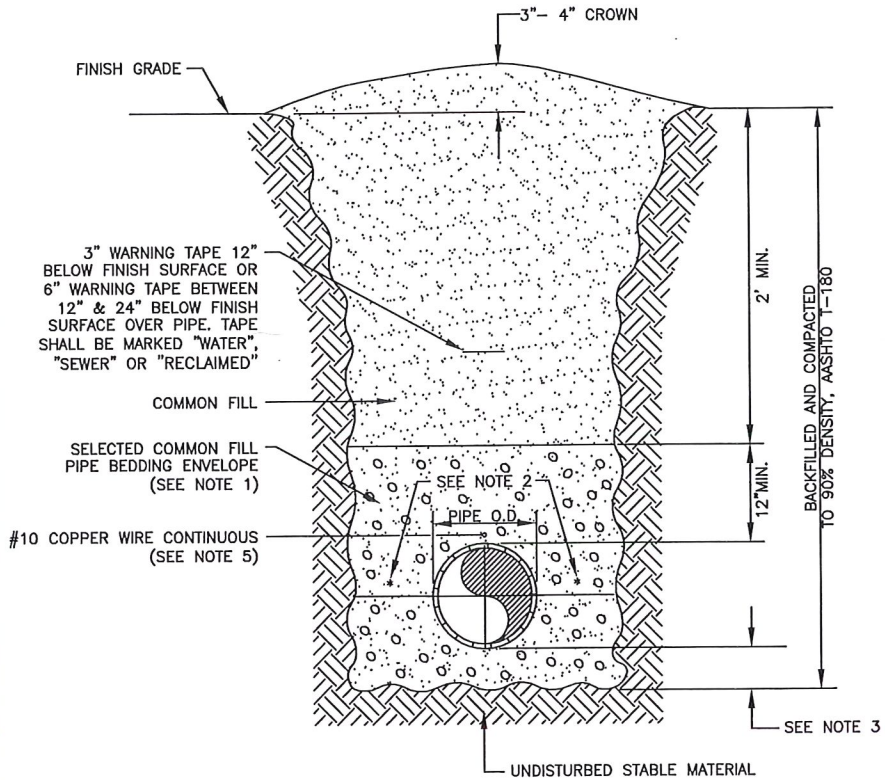
PAGE 109



MANATEE COUNTY PUBLIC WORKS DEPARTMENT			RESTRAINED LENGTHS FOR PIPE	UG-10
REV. BY CLB/BR	DATE 11/10	MAY 10, 2011 DATE OF APPROVAL		
			PAGE 110	

PAGE 110

- NOTES:
1. USE OF TYPE A-2 AND A-3 PIPE BEDDING TO BE DETERMINED IN THE FIELD BY THE ENGINEER.
 2. PROVIDE ADEQUATE CLEARANCE TO PLACE AND COMPACT STAGE 1 BEDDING MATERIAL IN TRENCH AREA BELOW PIPE SPRINGLINE. PIPE EMBEDMENT MUST BE COMPACTED OUT TO THE TRENCH WALL OR 2.5 TIMES THE PIPE OD, WHICHEVER IS LESS.
 3. TYPICALLY 4" TO 6".
 4. PIPE INSTALLATION SHALL BE IN ACCORDANCE WITH THE MANUFACTURER'S WRITTEN INSTRUCTIONS.
 5. TRACER WIRE NOT REQUIRED FOR GRAVITY SEWERS.



MANATEE COUNTY PUBLIC WORKS DEPARTMENT			TRENCH WITH UNIMPROVED SURFACE TYPE A-1 PIPE BEDDING	UG-11
REV. BY WRT/KE	DATE 03/11	MAY 10, 2011 DATE OF APPROVAL		
			PAGE 111	

PAGE 111

UTILITY
ACCOMMODATION
DETAILS

US 301 AT ELLENTON GILLETTE ROAD,
INTERSECTION IMPROVEMENTS

REVISIONS

LOMBARDO, FOLEY & KOLARIK, INC.
Consulting Engineers, Surveyors and Planners
P.O. Box 188 • 825 4th Street West • Palmetto, Florida 34221 • (941) 722-4561

PROJECT ENGINEER
JOHN R. FOLEY
38630
PE REG. NO.

DESIGN JRF. DATE 11/10/14

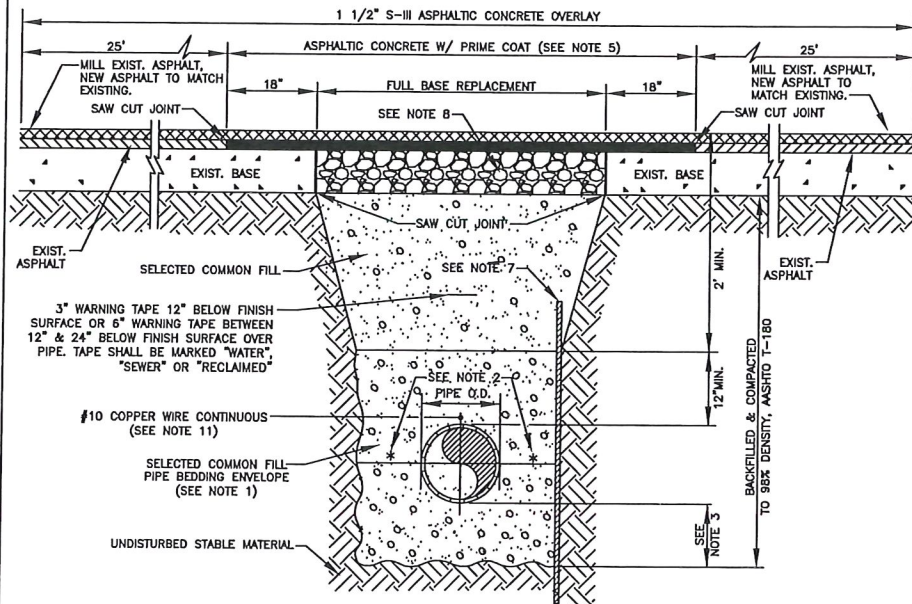
DRAWN P.B. SCALE NONE

APPR. JRF. JOB NO. 7870

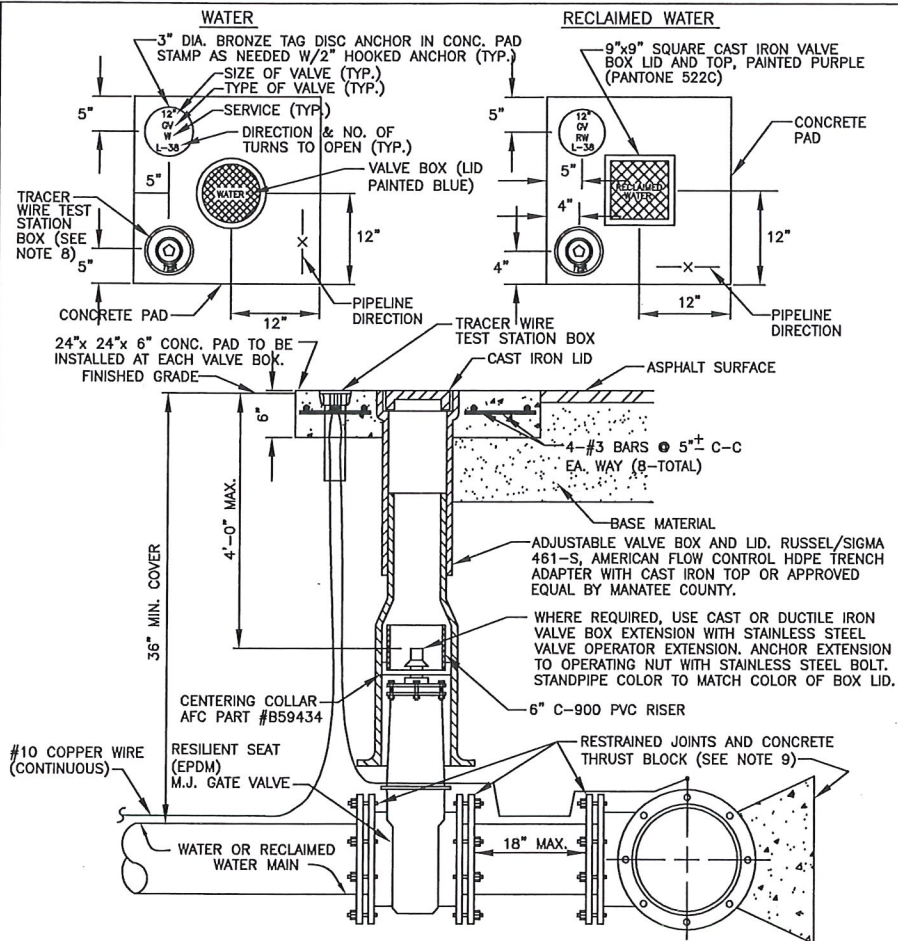
SHEET NO.
41
44

NOTES:

1. USE OF TYPE A-2 AND A-3 PIPE BEDDING TO BE DETERMINED IN THE FIELD BY THE ENGINEER.
2. PROVIDE ADEQUATE CLEARANCE TO PLACE AND COMPACT STAGE 1 BEDDING MATERIAL IN TRENCH AREA BELOW PIPE SPRINGLINE. PIPE EMBEDMENT MUST BE COMPACTED OUT TO THE TRENCH WALL OR 2.5 TIMES THE PIPE OD, WHICHEVER IS LESS.
3. TYPICALLY 4" TO 6".
4. PIPE INSTALLATION SHALL BE IN ACCORDANCE WITH THE MANUFACTURER'S WRITTEN INSTRUCTIONS.
5. ASPHALTIC CONCRETE STRUCTURE COURSE WITH PRIME COAT SHALL BE THE SAME DEPTH AND TYPE AS EXISTING OR A MINIMUM OF 1 1/4 INCH, WHICHEVER IS GREATER.
6. MILL 25' BACK FROM TRENCH SAW CUT. ADJUST MILLING PER INDIVIDUAL SITE TO NOT IMPACT BASE. BUTT JOINT TO EXIST ASPHALT. FINAL OVERLAY LIMITS ARE FROM EDGE OF PAVEMENT TO EDGE OF PAVEMENT. FINAL OVERLAY TO MATCH EXISTING WITH NO DISCERNABLE "BUMP" AT JOINT. MILLING LIMITS THAT IMPACT INTERSECTION SHALL BE ADDRESSED ON A CASE BY CASE BASIS AND APPROVED BY MANATEE COUNTY.
7. SHEETING ORDERED LEFT IN PLACE TO BE CUT OFF 24" BELOW FINISHED GRADE OR 12" BELOW SUBGRADE.
8. BASE SHALL BE 8" MINIMUM THICKNESS CRUSHED CONCRETE.
9. TEMPORARY PATCHES WILL BE INSTALLED TO PROVIDE A SMOOTH ALL WEATHER SURFACE AT ALL TIMES. PERMANENT REPLACEMENT TO BE MADE AS SOON AS POSSIBLE.
10. RESTORE SIGNAGE & MARKING WITH THERMOPLASTIC PER FDOT STANDARDS, LATEST EDITION.
11. TRACER WIRE NOT REQUIRED FOR GRAVITY SEWERS.
12. NOTES 5. THRU 10. ARE MINIMUM REQUIREMENTS FOR A TRENCH IN A ROAD. REFER TO LATEST EDITION OF MANATEE COUNTY HIGHWAY AND TRAFFIC STANDARDS FOR ADDITIONAL REQUIREMENTS.

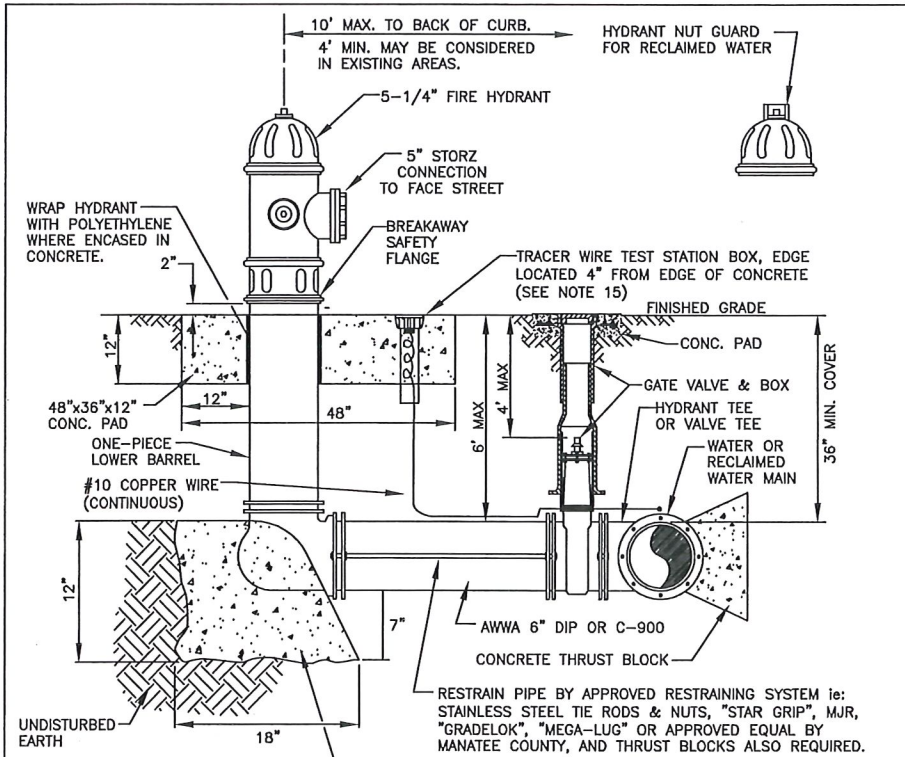


MANATEE COUNTY		TRENCH WITH ASPHALT PAVEMENT SURFACE TYPE A-1 PIPE BEDDING	UG-12
PUBLIC WORKS DEPARTMENT			
REV.BY	DATE		
WRT/KE	03/11		
		MAY 10, 2011	
		DATE OF APPROVAL	
			PAGE 112



- NOTES:
1. "WV" OR "RWV" TO BE IMPRESSED INTO THE NEWLY-POURED CONCRETE CURB, ALONG WITH DISTANCE IN FEET TO THE VALVE. IF NO CURB, INSTALL A BLUE DISC WITH "WV" OR PURPLE DISC WITH "RWV" AND A 1/8"x1" GALVANIZED STEEL SCREW IN THE EDGE OF PAVEMENT WITH THE FOOTAGE FROM THE DISC TO THE VALVE.
 2. ALL EXISTING AND PROPOSED VALVE BOXES SHALL BE ADJUSTED TO FINISHED GRADES AS DETERMINED IN THE FIELD.
 3. WATER VALVES SHALL NOT BE PLACED IN HANDICAPPED RAMPS.
 4. PRECAST CONCRETE PADS & THRUST BLOCKS SHALL NOT BE USED.
 5. ALL EXPOSED EDGES OF CONCRETE SHALL BE CHAMFERED 1/2".
 6. FOR VALVES 16" AND LARGER, USE BUTTERFLY VALVES.
 7. PIPELINE DIRECTION TO BE IMPRESSED INTO NEWLY POURED CONCRETE PAD.
 8. TRACER WIRE TEST STATION BOX IS NOT REQUIRED IN VALVE BOX PAD IF THE GATE VALVE IS LOCATED WITHIN 200 FEET OF A WATER SERVICE, BLOW-OFF, BACKFLOW PREVENTER OR FIRE HYDRANT THAT HAS A TRACER WIRE BOX.
 9. WHERE THRUST BLOCK NOT USED, RESTRAINED JOINTS MUST THEN EXTEND FROM TEE FULL LENGTH SPECIFIED FOR "TEES."
 10. BINGHAM & TAYLOR P200NFG FOR NORMAL YARD SERVICE. WHERE VALVE WILL BE IN STREET OR PARKING UNDER VEHICLE TRAFFIC, USE P525RD CENTERED IN SEPARATE CONCRETE PAD SIMILAR TO STANDARD VALVE BOX PAD.

MANATEE COUNTY PUBLIC WORKS DEPARTMENT			GATE VALVE, BOX, LID AND TAG	UW-2
REV.BY	DATE	MAY 10, 2011 DATE OF APPROVAL		
CLB/KE	11/10			
			PAGE 120	



- NOTES:
1. WEEPHOLES SHALL BE EXCLUDED FROM THE FIRE HYDRANT.
 2. FIRE HYDRANTS SHALL BE A MINIMUM OF 6" OFF EDGE OF PAVEMENT AND 10" MAX. FROM BACK OF CURB. WHERE POSSIBLE AND WHERE SIDEWALK IS TO BE INSTALLED, FIRE HYDRANT SHALL BE LOCATED BETWEEN SIDEWALK AND RIGHT-OF-WAY LINE.
 3. HYDRANTS SHALL BE FUSION BONDED EPOXY COATED SAFETY YELLOW FOR WATER AND PURPLE (PANTONE 522C) FOR RECLAIMED WATER. HYDRANT SHALL BE DUCTILE IRON CONSTRUCTION.
 4. FIRE HYDRANTS SHALL BE PLACED SO THAT STORM WATER FLOWS AWAY FROM THE HYDRANT.
 5. FIRE HYDRANTS SHALL BE CONSTRUCTED WITH "GROUND LINE" SET TO FINISHED GRADES AS ESTABLISHED IN THE FIELD. NORMAL BURY IS 3 FEET OF COVER FOR ALL WATER LINES.
 6. FIRE HYDRANTS MAY BE CONSTRUCTED WITH "GRADELOK" OFFSET FITTING.
 7. RAISED REFLECTIVE PAVEMENT MARKER (BLUE) FOR POTABLE WATER (PURPLE) FOR RECLAIMED WATER. SHALL BE INSTALLED AT CENTERLINE OF PAVEMENT ADJACENT TO EACH HYDRANT.
 8. PRECAST CONCRETE THRUST BLOCKS & PADS SHALL NOT BE USED.
 9. ALL EXPOSED EDGES OF CONCRETE SHALL HAVE 1/2" CHAMFER.
 10. FIRE HYDRANT VALVE SHALL BE FASTENED DIRECTLY TO TEE.
 11. IN-LINE VALVES SHOULD BE LOCATED AT HYDRANT TEES.
 12. HYDRANTS SHALL BE LOCATED ON SAME SIDE OF ROAD AS WATER MAIN UNLESS OTHERWISE APPROVED.
 13. THERE MUST BE A CLEARANCE OF 7 1/2 FEET FROM FRONT AND BOTH SIDES, AND FOUR FEET TO THE REAR OF THE HYDRANT, TO ABOVE GRADE OBSTRUCTIONS INCLUDING POSTS, FENCES, TREES, ETC., PER THE FLORIDA FIRE PREVENTION CODE.
 14. SEE STANDARD DETAIL GATE VALVE, BOX, LID AND TAG.
 15. SHOULD THE FIRE HYDRANT'S CONCRETE PAD OVERLAP THE SIDEWALK, THE TRACER WIRE TEST STATION BOX SHALL NOT BE LOCATED WITHIN THE SIDEWALK.

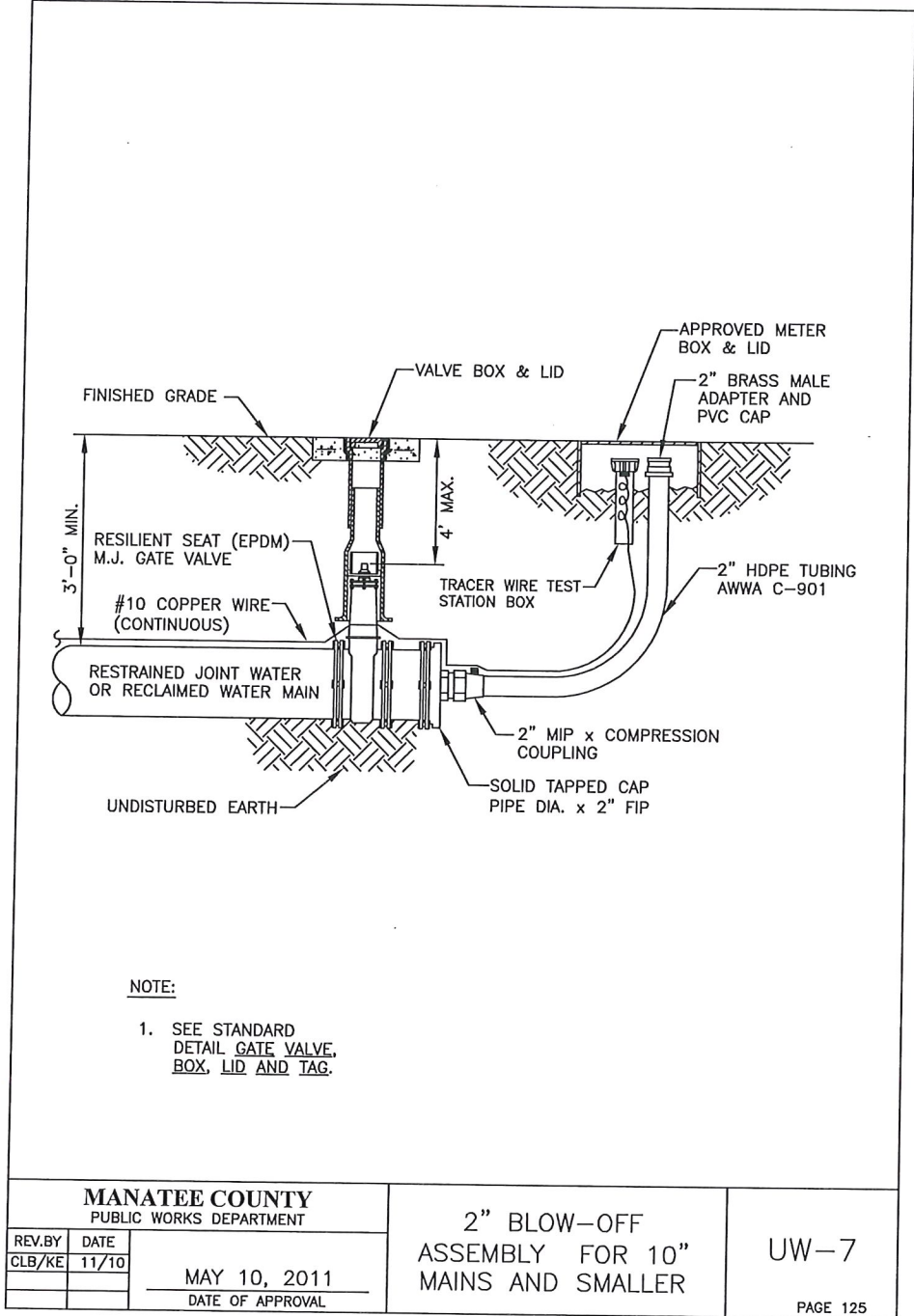
MANATEE COUNTY PUBLIC WORKS DEPARTMENT			FIRE HYDRANT ASSEMBLY	UW-5
REV. BY	DATE	MAY 10, 2011 DATE OF APPROVAL		
CLB/KE	11/10			
			PAGE 123	

UTILITY ACCOMMODATION DETAILS

US 301 AT ELLENTON GILLETTE ROAD,
INTERSECTION IMPROVEMENTS

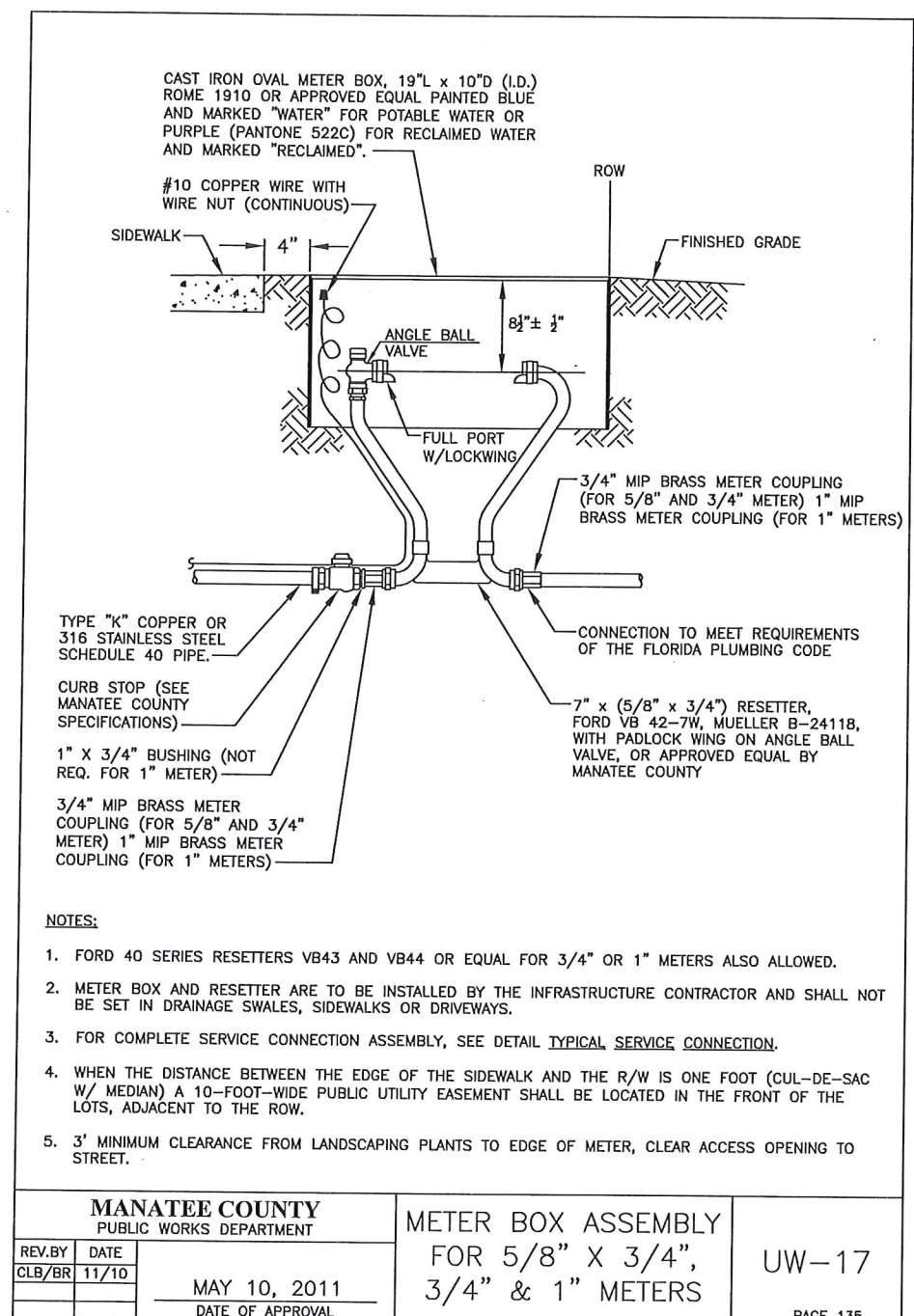
REVISIONS	LOMBARDO, FOLEY & KOLARIK, INC.		LF&K
	No. 38630 Routing Engineers, Surveyors and Planners P.O. Box 188 • 825 4th Street West • Palmetto, Florida 34221 • (941) 722-4561		
DESIGN	JRF.	DATE	11/10/14
DRAWN	P.B.	SCALE	NONE
APPR.	JRF.	JOB NO.	7870
SHEET NO.			42 / 44

Z:\Master Drawing\ELLENTON-GILLETTE - US 301 FDOT\ELLGILL-301-FDOT-UD.dwg, 12/19/2017 11:57:26 AM, pete, 1:4



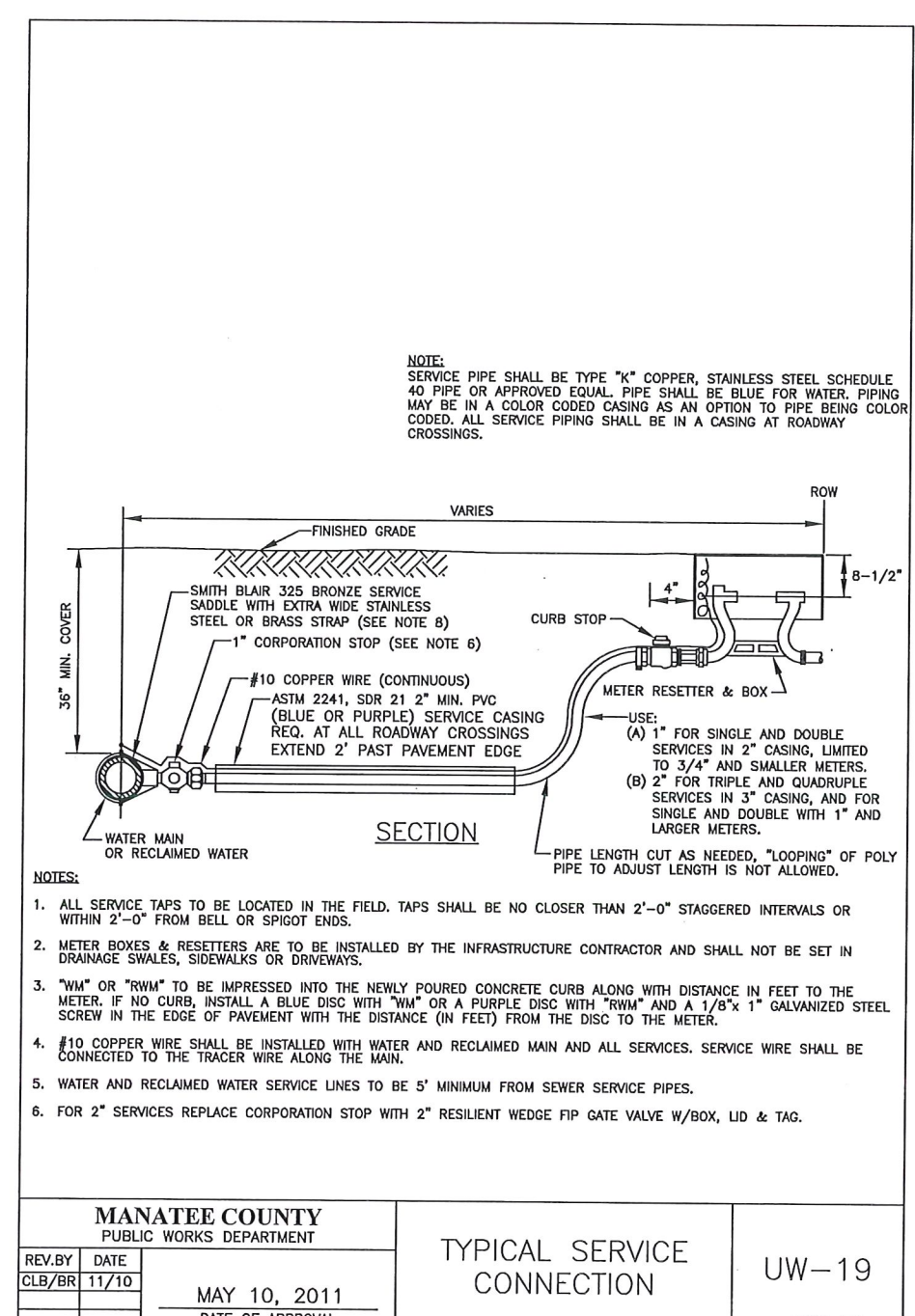
NOTE:
1. SEE STANDARD
DETAIL GATE VALVE,
BOX, LID AND TAG.

MANATEE COUNTY PUBLIC WORKS DEPARTMENT		2" BLOW-OFF ASSEMBLY FOR 10" MAINS AND SMALLER	UW-7
REV. BY CLB/KE	DATE 11/10		
		MAY 10, 2011 DATE OF APPROVAL	PAGE 125



- NOTES:
1. FORD 40 SERIES RESETTERS VB43 AND VB44 OR EQUAL FOR 3/4" OR 1" METERS ALSO ALLOWED.
 2. METER BOX AND RESETTER ARE TO BE INSTALLED BY THE INFRASTRUCTURE CONTRACTOR AND SHALL NOT BE SET IN DRAINAGE SWALES, SIDEWALKS OR DRIVEWAYS.
 3. FOR COMPLETE SERVICE CONNECTION ASSEMBLY, SEE DETAIL TYPICAL SERVICE CONNECTION.
 4. WHEN THE DISTANCE BETWEEN THE EDGE OF THE SIDEWALK AND THE R/W IS ONE FOOT (CUL-DE-SAC W/ MEDIAN) A 10-FOOT-WIDE PUBLIC UTILITY EASEMENT SHALL BE LOCATED IN THE FRONT OF THE LOTS, ADJACENT TO THE ROW.
 5. 3' MINIMUM CLEARANCE FROM LANDSCAPING PLANTS TO EDGE OF METER, CLEAR ACCESS OPENING TO STREET.

MANATEE COUNTY PUBLIC WORKS DEPARTMENT		METER BOX ASSEMBLY FOR 5/8" X 3/4", 3/4" & 1" METERS	UW-17
REV. BY CLB/BR	DATE 11/10		
		MAY 10, 2011 DATE OF APPROVAL	PAGE 135



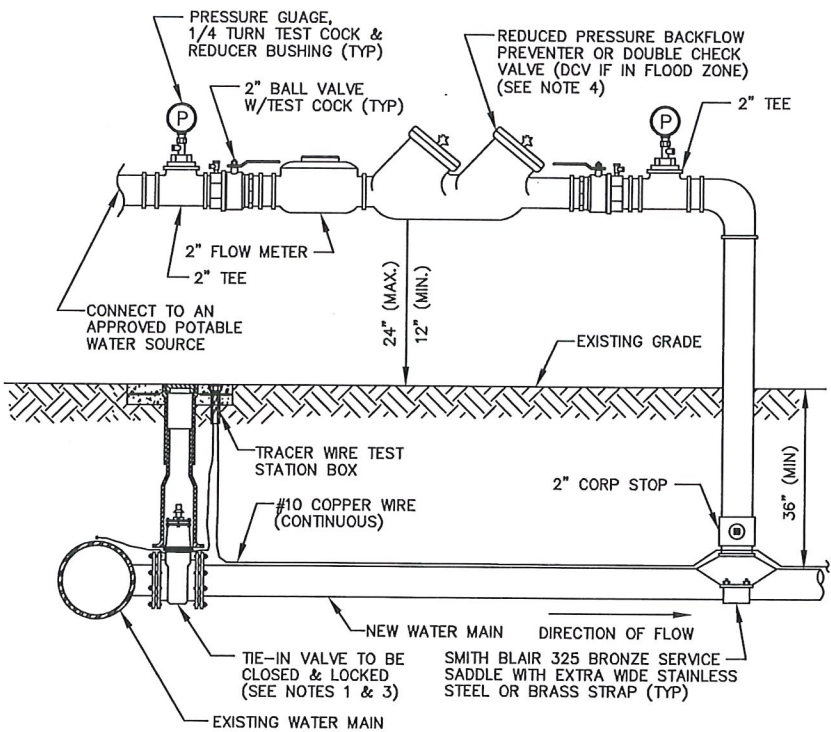
- NOTE:
SERVICE PIPE SHALL BE TYPE "K" COPPER, STAINLESS STEEL SCHEDULE 40 PIPE OR APPROVED EQUAL. PIPE SHALL BE BLUE FOR WATER, PIPING MAY BE IN A COLOR CODED CASING AS AN OPTION TO PIPE BEING COLOR CODED. ALL SERVICE PIPING SHALL BE IN A CASING AT ROADWAY CROSSINGS.
- NOTES:
1. ALL SERVICE TAPS TO BE LOCATED IN THE FIELD. TAPS SHALL BE NO CLOSER THAN 2'-0" STAGGERED INTERVALS OR WITHIN 2'-0" FROM BELL OR SPIGOT ENDS.
 2. METER BOXES & RESETTERS ARE TO BE INSTALLED BY THE INFRASTRUCTURE CONTRACTOR AND SHALL NOT BE SET IN DRAINAGE SWALES, SIDEWALKS OR DRIVEWAYS.
 3. "WM" OR "RWM" TO BE IMPRESSED INTO THE NEWLY POURED CONCRETE CURB ALONG WITH DISTANCE IN FEET TO THE METER. IF NO CURB, INSTALL A BLUE DISC WITH "WM" OR A PURPLE DISC WITH "RWM" AND A 1/8" x 1" GALVANIZED STEEL SCREW IN THE EDGE OF PAVEMENT WITH THE DISTANCE (IN FEET) FROM THE DISC TO THE METER.
 4. #10 COPPER WIRE SHALL BE INSTALLED WITH WATER AND RECLAIMED MAIN AND ALL SERVICES. SERVICE WIRE SHALL BE CONNECTED TO THE TRACER WIRE ALONG THE MAIN.
 5. WATER AND RECLAIMED WATER SERVICE LINES TO BE 5' MINIMUM FROM SEWER SERVICE PIPES.
 6. FOR 2" SERVICES REPLACE CORPORATION STOP WITH 2" RESILIENT WEDGE FIP GATE VALVE W/BOX, LID & TAG.

MANATEE COUNTY PUBLIC WORKS DEPARTMENT		TYPICAL SERVICE CONNECTION	UW-19
REV. BY CLB/BR	DATE 11/10		
		MAY 10, 2011 DATE OF APPROVAL	PAGE 137

UTILITY ACCOMMODATION DETAILS

US 301 AT ELLENTON GILLETTE ROAD,
INTERSECTION IMPROVEMENTS

REVISIONS	LOMBARDO, FOLEY & KOLARIK, INC. No 3800 Consulting Engineers, Surveyors and Planners P.O. Box 188 • 625 4th Street West • Palmetto, Florida 34221 • (941) 722-4561			
	DESIGN <u>JRF</u> DATE <u>11/10/14</u>			
	DRAWN <u>PE</u> SCALE <u>NONE</u>			
	APPR. <u>JRF</u> JOB NO. <u>7870</u>			
SHEET NO. 43			44	
PE REG. NO. <u>38638</u>				



PROFILE

NOTES:

1. FOR TIE-IN VALVE, SEE DETAIL UW-4 FOR TAPPING SLEEVE VALVE, DETAIL UW-2 FOR GATE VALVE AND DETAIL UW-3 FOR BUTTERFLY VALVE.
2. CORPORATION STOP CONNECTIONS TO WATER MAINS SHALL BE AT A SUFFICIENT DISTANCE FROM NEW TAPPING SLEEVE & VALVE (TIE-IN VALVE). ALL CORPORATION STOP TAPS SHALL BE PLACED NO CLOSER THAN 30" OR A DISTANCE EQUAL TO (1) MAIN PIPE DIAMETER PLUS (2) TAP DIAMETERS (WHICHEVER IS LARGER) FROM THE NEW TIE-IN VALVE (TAPPING VALVE & SLEEVE). A CROSS MAY BE INSTALLED IF THE EXISTING WATER MAIN IS NOT LARGER THAN THE NEW WATER MAIN.
3. IF THE EXISTING WATER MAIN IS LOCATED UNDER PAVEMENT OR CLOSE TO THE ROADWAY, BOTH JUMPER CORPORATION STOPS MAY CONNECT TO THE NEW WATER MAIN LOCATED OUTSIDE OF THE PAVEMENT. AN ADDITIONAL GATE VALVE OR BUTTERFLY VALVE SHALL BE INSTALLED AND THE VALVE MAY BE LOCATED AT THE ROW LINE. PIPING AND APPURTENANCES BETWEEN THE EXISTING MAIN AND ISOLATION VALVE AND JUMPER SHALL BE DISINFECTED BY SPRAYING OR SWABBING.
4. BACKFLOW PREVENTER SHALL BE STRUCTURALLY SUPPORTED.
5. SEE DETAIL UW-22 FOR ADDITIONAL JUMPER CONNECTION NOTES.

MANATEE COUNTY PUBLIC WORKS DEPARTMENT			TEMPORARY JUMPER CONNECTION	UW-21
REV. BY	DATE	MAY 10, 2011 DATE OF APPROVAL		
WT/KE	01/11			
			PAGE 139	

UTILITY
ACCOMMODATION
DETAILS

US 301 AT ELLENTON GILLETTE ROAD,
INTERSECTION IMPROVEMENTS

REVISIONS	LOMBARDO, FOLEY & KOLARIK, INC. No. 3000 Professional Engineers, Surveyors and Planners P.O. Box 188 • 825 4th Street West • Palmetto, Florida 34221 • (941) 722-4561			
	PROJECT ENGINEER JOHN R. FOLEY 38630 PE REG. NO.			
	DESIGN	JRF.	DATE	11/10/14
	DRAWN	P.G.	SCALE	NONE
	APPR.	JRF.	JOB NO.	7870
SHEET NO.				44 / 44