

3277 Peachtree Road
Bldg. A, Suite 2
Smyrna, Florida 32127
Phone: 341.583.4771
Fax: 341.583.4779

Engineers
Architects
Planners
Landscape Architects
Environmental Scientists
Construction Management
Traffic / Transportation

Eng. C.O.A. No. 3215
Survey L.B. No. 7143
Arch. Lic. No. A4260926
Landscape Lic. No. LC0000258
© 2011

NATHAN J. KRAGT, P.E.
69272
12-06-11

N.J.K.
N.J.K.
By

REVISIONS PER ADDENDUM 1		
BID SET		
Revision		

Designed by:	NJK	△			
Drawn by:	DMI	△			
Checked by:	NJK	△			
Approved by:	DPM	△			
Scale:	1"= 40'	△			
Date:	06/10	△	12-05-11		
JOB NUMBER:	M13103	△	06-17-11		
File:	SDP	No.	Date		

SITE IMPROVEMENT PLAN

MANATEE COUNTY CIVIC
CENTER IMPROVEMENTS

MANATEE COUNTY, FLORIDA

Sheet No.

C-4

KEYNOTES LEGEND

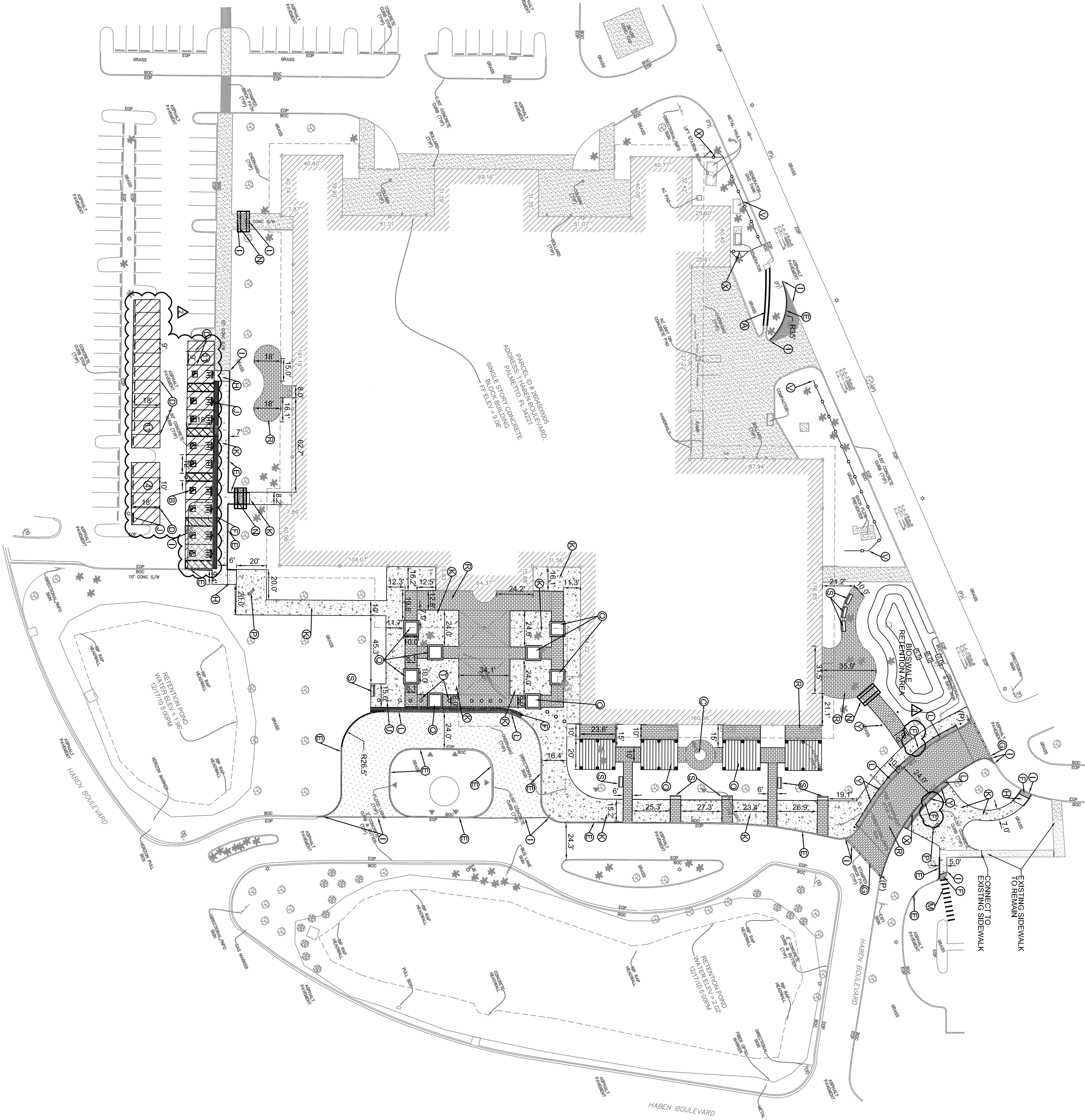
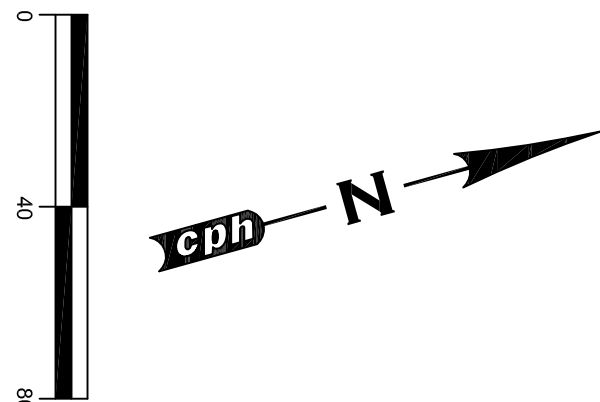
- (A) CONCRETE FLUME (4" THICK CONCRETE) - CONTRACTOR TO EXTEND EXISTING FLUME TO THE EXISTING GRAVE INLET. (REFER TO GENERAL DETAILS SHEET).
- (B) ACCESSIBLE PARKING SPACE (TYPICAL) REFER TO GENERAL DETAIL SHEET
- (C) ACCESSIBLE PARKING SPACE (TYPICAL) REFER TO GENERAL DETAIL SHEET
- (D) SUNDIAL SCULPTURE - REFER TO HARDSCAPE PLANS
- (E) SINGLE WHITE SOLID LINE / 4" WIDE (REFLECTIVE PAINT)
- (F) TYPE "D" CURB AND GUTTER PER FOOT INDEX #400
- (G) 3" WIDE DETECTABLE WARNING PAVERS PER FLORIDA BUILDING CODE (DETECTABLE WARNING PAVERS TO BE CONTRASTING COLOR. REFER TO HARDSCAPE PLAN)
- (H) 1" WIDE (10" THICK CONCRETE) PAVEMENT SEPARATOR USED TO SEPARATE SIDEWALK FROM DRIVEWAY
- (I) ADA ACCESSIBLE RAMP (REFER TO GENERAL DETAIL SHEET).
- (J) NEATLY SAW CUT AND CONSTRUCT SMOOTH TRANSITION TO EXISTING CURB / PAVEMENT
- (K) CONCRETE WHEEL STOP (REFER TO GENERAL DETAIL SHEET) CONTRACTOR TO REUSE EXISTING WHEEL STOPS AS APPLICABLE
- (L) CONCRETE SIDEWALK REFER TO LANDSCAPE / HARDSCAPE PLAN FOR DETAILS AND SAWCUT LINE LOCATIONS.
- (M) 6" WIDE (10" THICK CONCRETE) SEPARATOR USED TO SEPARATE DETECTABLE WARNING PAVERS FROM ADJACENT ASPHALT / ROADWAY PAVERS
- (N) 5" WIDE CROSSWALK - 1" WIDE WHITE STRIP @ 3' O.C. PER MUTCD
- (O) ARBOR - REFER TO HARDSCAPE PLAN (PAVERS TO BE INSTALLED UNDER ARBOR (TYP.)
- (P) PERGOLA - REFER TO HARDSCAPE PLAN
- (Q) KIOSK - REFER TO HARDSCAPE PLAN
- (R) RAISED PLANTER ISLAND - REFER TO HARDSCAPE PLAN
- (S) PAVERS - REFER TO HARDSCAPE PLAN
- (T) BENCH - REFER TO HARDSCAPE PLAN
- (U) ARCHITECTURAL BALL FEATURE - REFER TO ARCHITECT PLANS
- (V) FLAG POLE (EXISTING) TO REMAIN
- (W) 6" SCREEN WALL - REFER TO HARDSCAPE PLAN
- (X) NOT USED
- (Y) GATE - REFER TO HARDSCAPE PLAN
- (Z) PEDERMAN BOLLARD - REFER TO HARDSCAPE PLAN AND LIGHTING PLAN (BY OTHERS).

- (1) REMOVE EXISTING ASPHALT AND REBUILD AS HEAVY DUTY ASPHALT PER THE PROPOSED GRADE. REFER TO THE GENERAL DETAILS SHEET FOR SPECIFICATIONS.
- (2) PAVERS - REFER TO LANDSCAPE PLANS FOR DETAILS.
- (3) HEAVY DUTY CONCRETE. REFER TO THE GENERAL DETAILS SHEET.
- (4) REMOVE EXISTING CONCRETE AND REPLACE WITH STANDARD DUTY PAVEMENT. REFER TO THE GENERAL DETAILS SHEET.
- (5) SEAL COAT. REFER TO SITE SPECIFICATIONS.

- (H) ACCESSIBLE SIGN. REFER TO THE GENERAL DETAILS SHEET.
- (P) PEDESTRIAN CROSSING SIGN. REFER TO THE GENERAL DETAILS SHEET.

GENERAL NOTES

- 1. DIMENSIONS ARE MEASURED FROM THE FACE OF CURB UNLESS NOTED OTHERWISE. ALL UNMARKED ROAD = 10' FOR DRIVEWAYS AND 9' FOR PARKING UNLESS SPECIFIED OTHERWISE.
- 2. ALL SIDEWALKS MUST HAVE A MINIMUM WIDTH OF 5 FEET UNLESS OTHERWISE SPECIFIED.



NOTICE: THESE PLANS HAVE BEEN SLIGHTLY ALTERED BY THE REPRODUCTION PROCESS. THE REPRODUCED PLANS MAY NOT BE IDENTICAL TO THE ORIGINAL PLANS. ANY REPRODUCED PLANS FOR THE PURPOSE OF COLLECTING DATA.

NOTE: NOT RELEASED FOR CONSTRUCTION UNLESS STAMPED "RELEASED FOR CONSTRUCTION"

