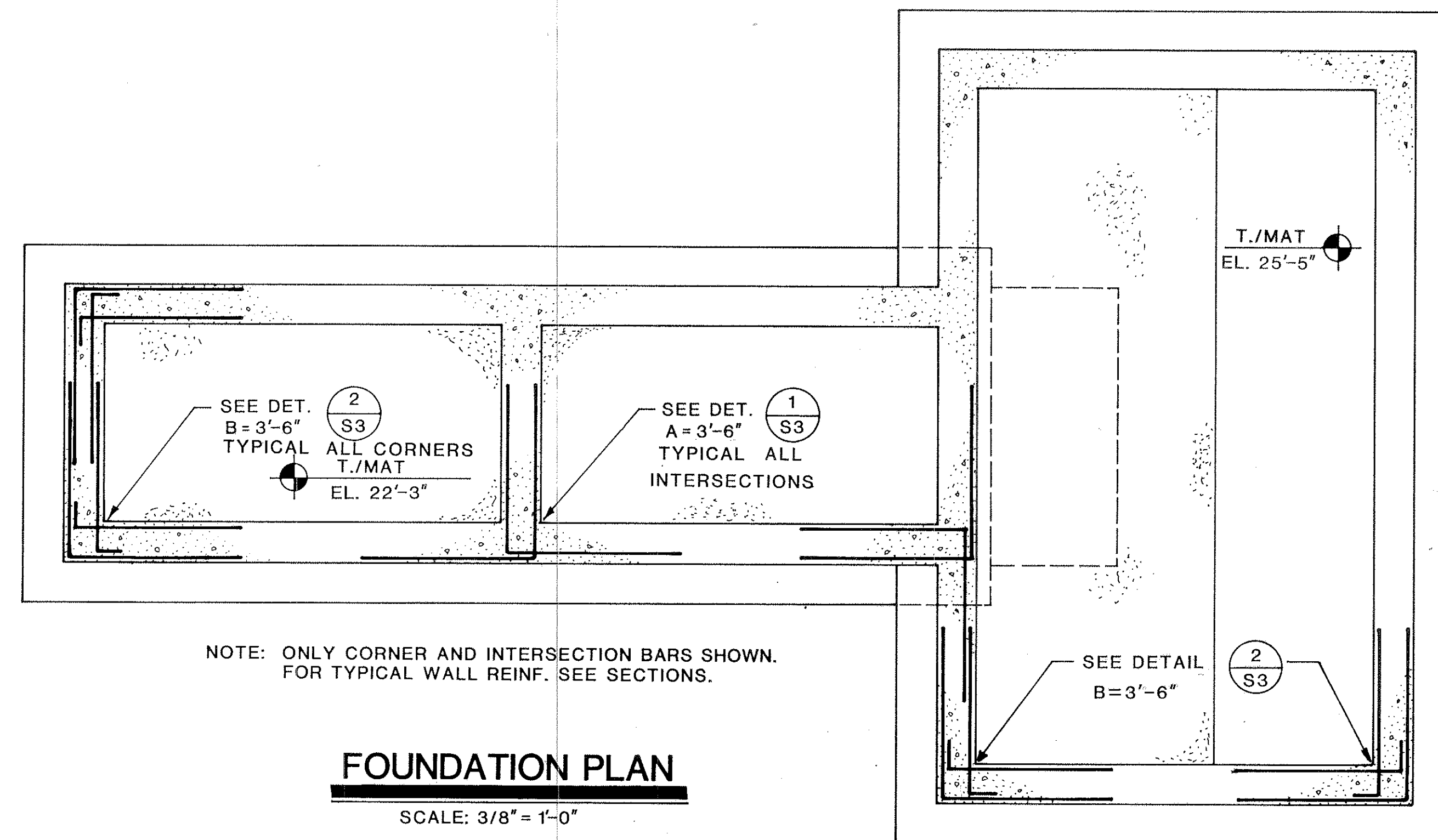
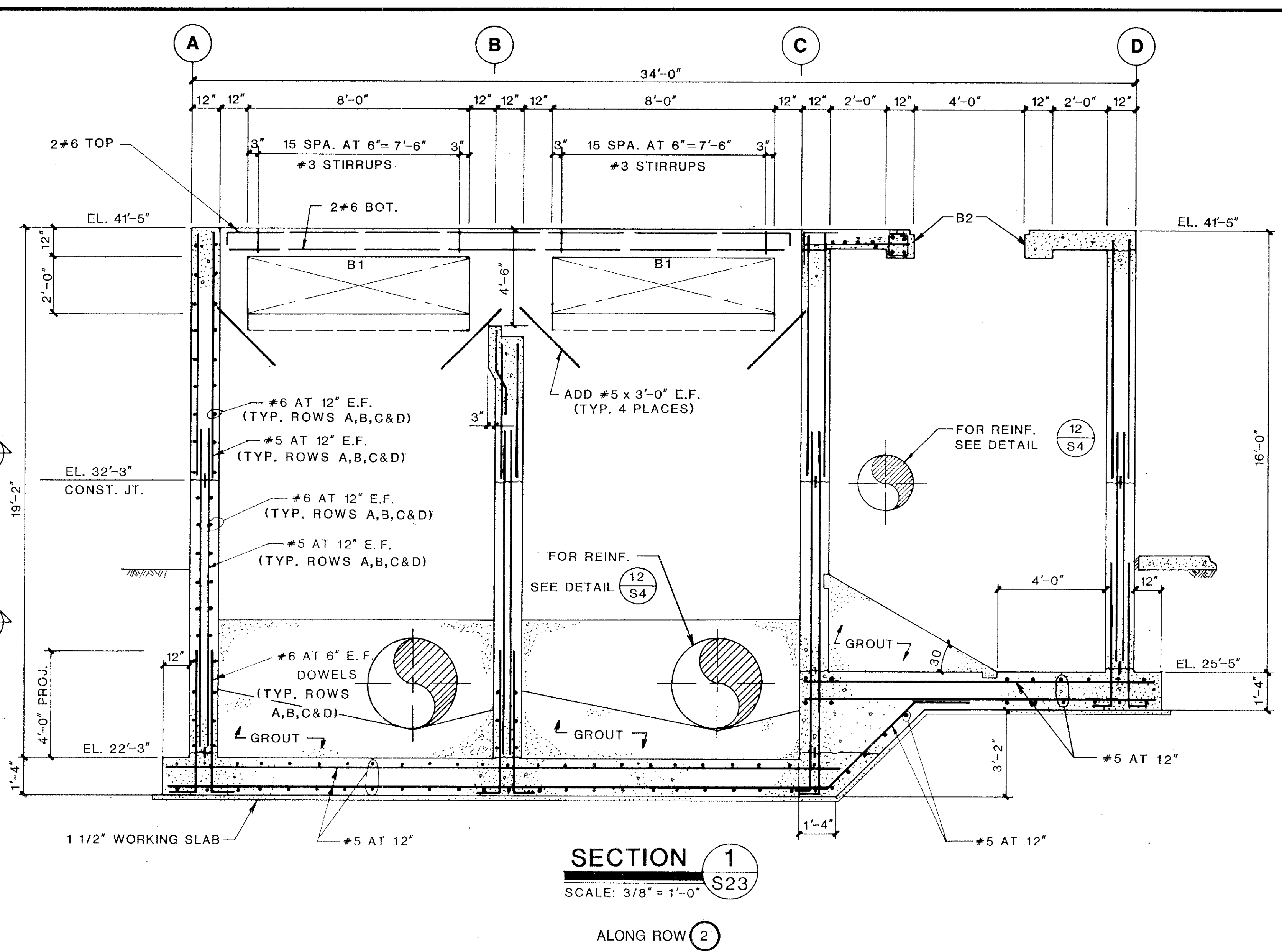
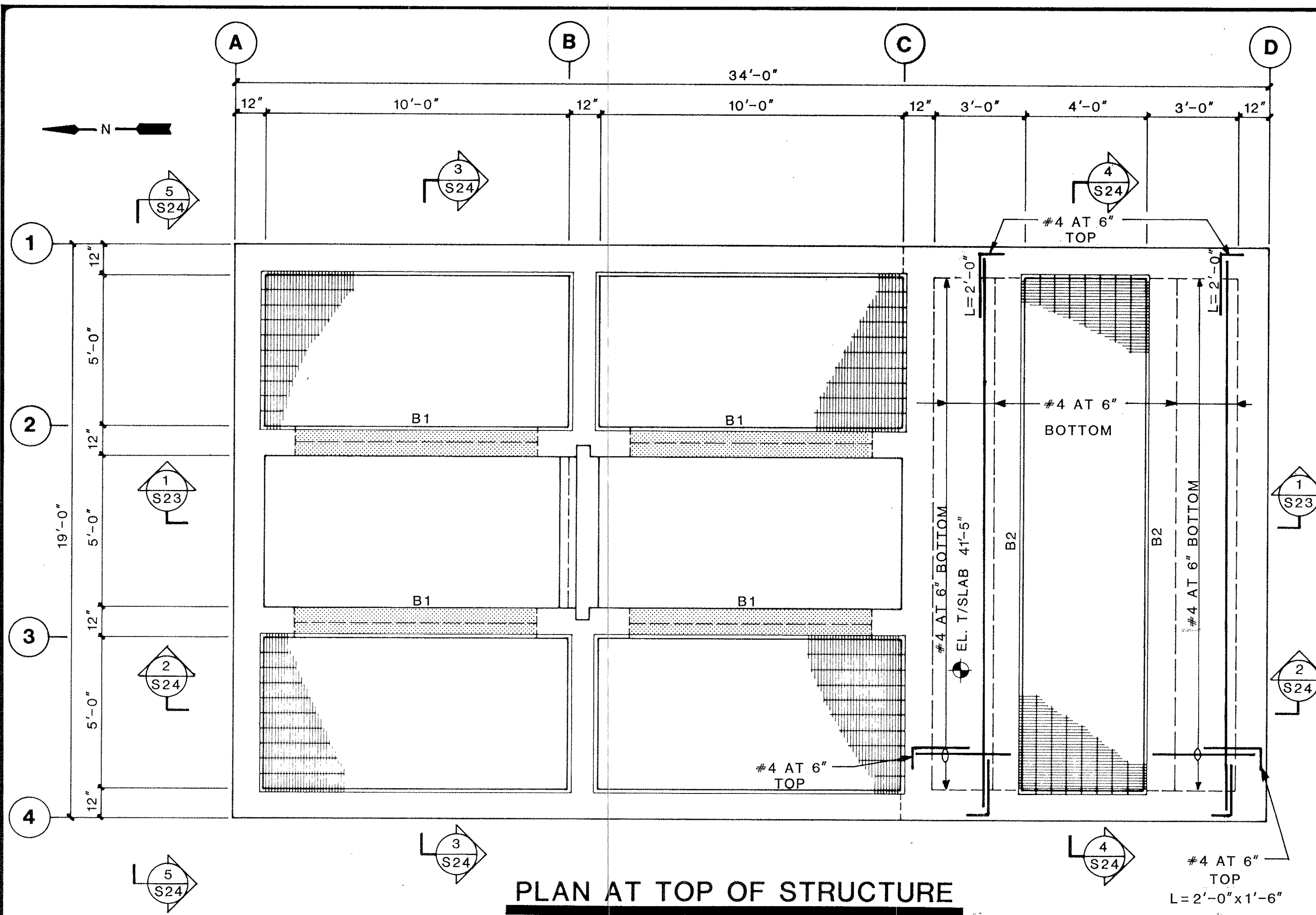


NOTE: TANK TO BE DESIGNED BY TANK CONTRACTOR PER SPECIFICATION REQUIREMENTS.



**FLOW SPLITTER BOX
PLANS & SECTIONS**

DRAWN: WSM
CHECKED: MA
APPROVED: BE
DATE: MARCH 85
SCALE: AS SHOWN
REFERENCE NUMBER: 84-160S-E23
SHEET NO: S23

gai
Consultants-
Southeast, Inc.
1833 Edgewater Drive
Orlando, Florida 32804
305/423-8398

MANATEE COUNTY PUBLIC UTILITIES DEPARTMENT
**NORTH SUBREGIONAL
WASTEWATER TREATMENT FACILITIES**
E.P.A. NO. C-120540060
MANATEE COUNTY, FLORIDA

CAMP DRESSER & MCKEE INC.

environmental engineers, scientists,
planners & management consultants
CDM

REVISIONS
2/87 WLR CONFORMED
3
4
5

LEI

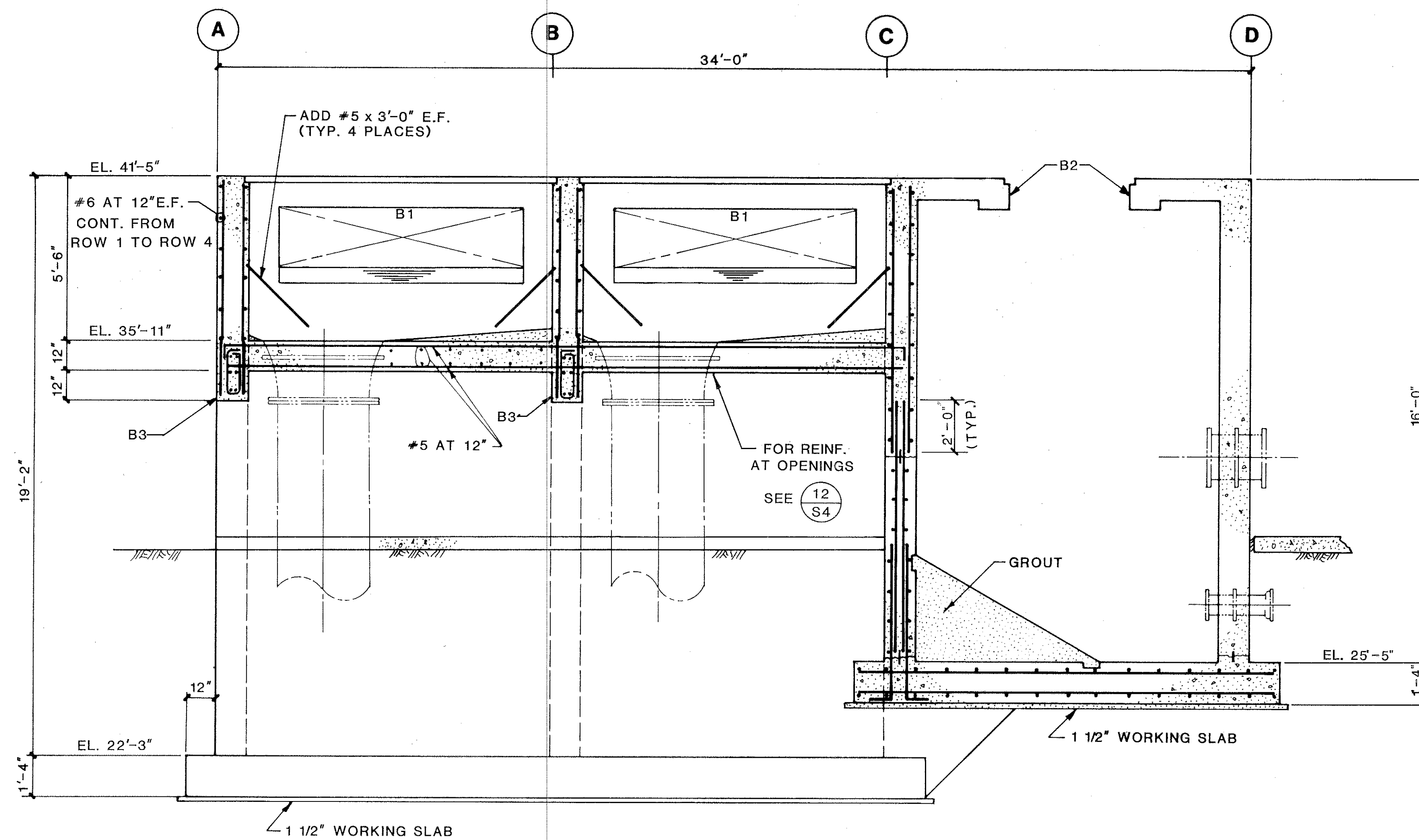
Larson Engineering, Inc.
Consulting Engineers

6404 Manatee Ave. W., Suite N
Bradenton, Florida 33529
(813) 794-5450

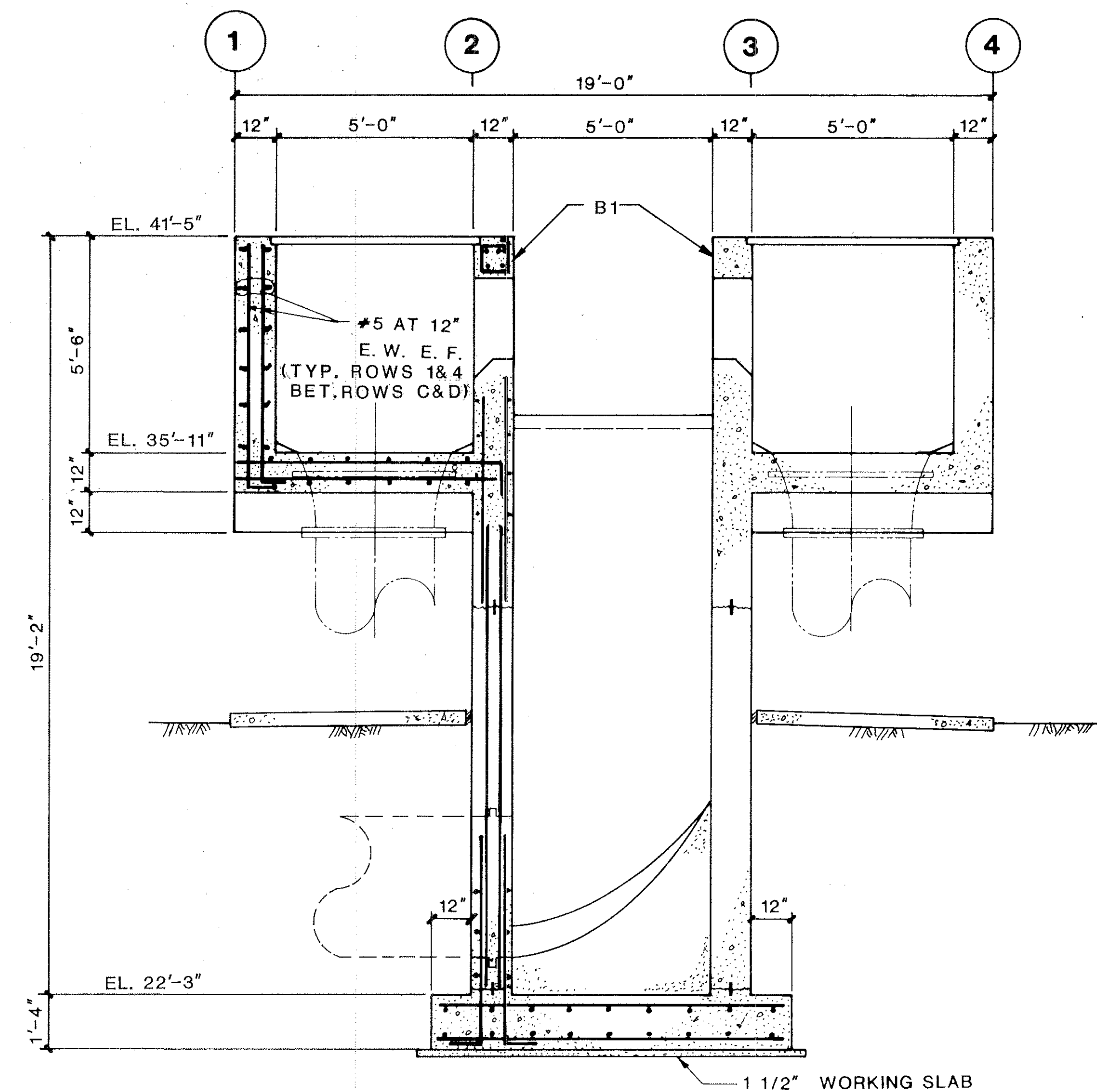
DESIGNED: _____ CHECKED: _____ DATE: _____ SCALE: _____
DRAWN: _____ FILE NO: _____ SHEET: S-23 OF S-59

26-01

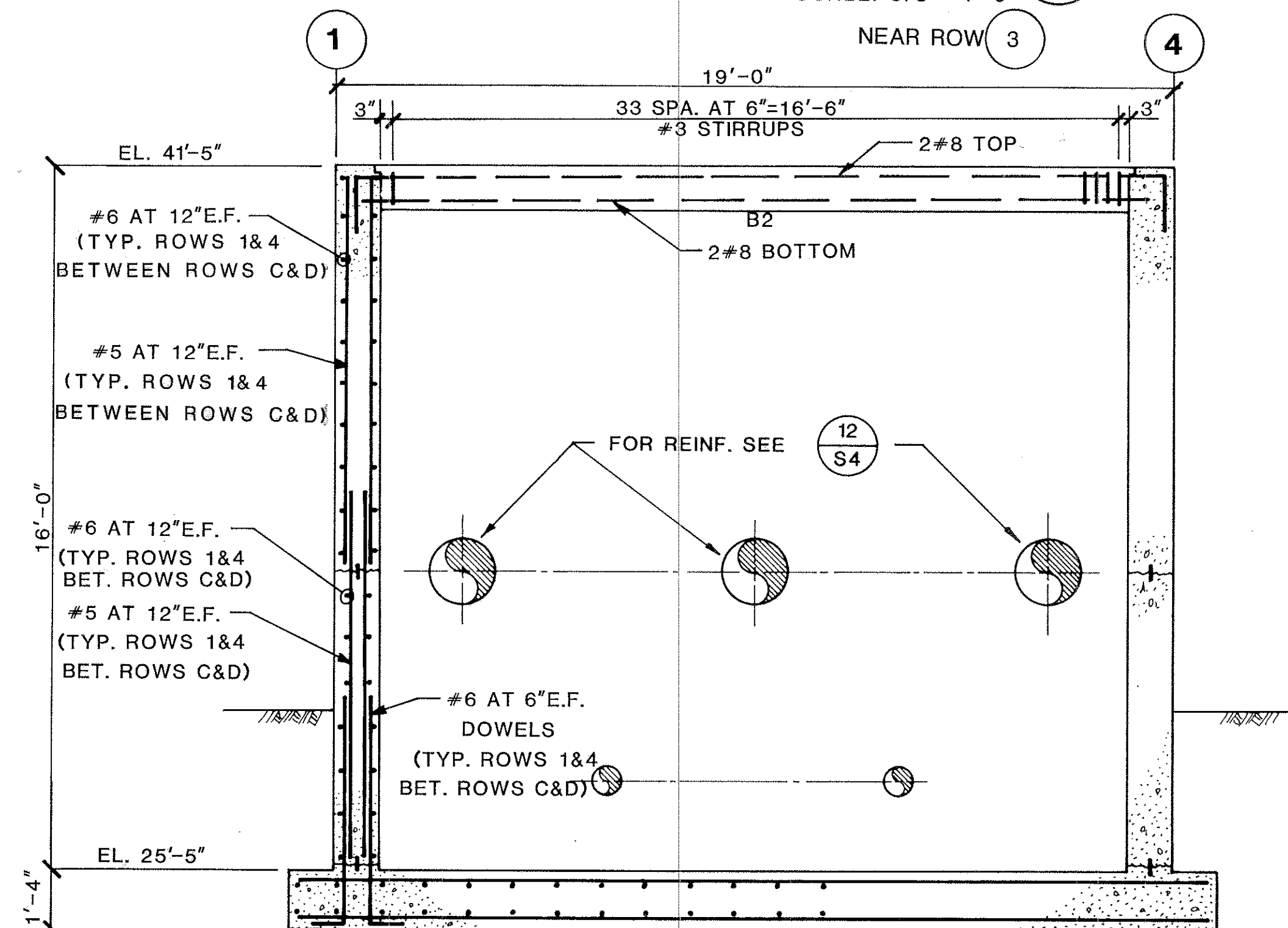
RECORD DRAWINGS 12/19/89



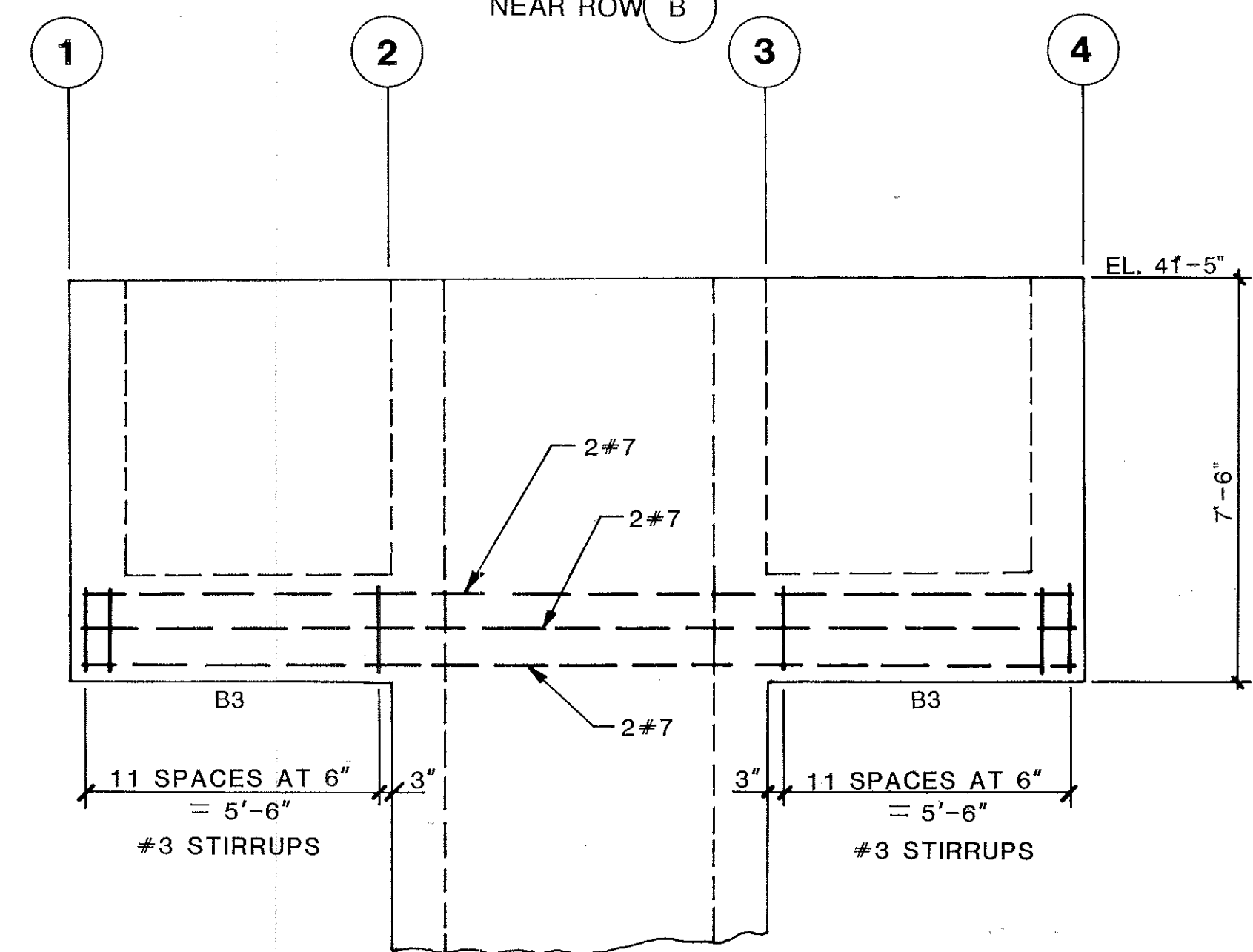
SECTION 2
SCALE: 3/8" = 1'-0"
NEAR ROW 3



SECTION 3
SCALE: 3/8" = 1'-0"
NEAR ROW B



SECTION 4
SCALE: 3/8" = 1'-0"
NEAR ROW D



ELEVATION 5
SCALE: 3/8" = 1'-0"
ALONG ROW A

**FLOW SPLITTER BOX
SECTIONS**

DRAWN: WSM APPROVED: BE SCALE: AS SHOWN REFERENCE NUMBER: 84-160S-E24 SHEET NO: S24
CHECKED: MA DATE: MARCH 85

gni
Consultants-
Southeast, Inc.
1833 Edgewater Drive
Orlando, Florida 32804
305/423-8398

MANATEE COUNTY PUBLIC UTILITIES DEPARTMENT
**NORTH SUBREGIONAL
WASTEWATER TREATMENT FACILITIES**
E.P.A. NO. C-120540060
MANATEE COUNTY, FLORIDA

CAMP DRESSER & MCKEE INC.

environmental engineers, scientists,
planners, & management consultants

CDM

REVISIONS
2/87 WLR CONFORMED
3
4
5

LEI

Larson Engineering, Inc.
Consulting Engineers
6404 Manatee Ave. W., Suite N
Bradenton, Florida 33529
(813) 794-5450

DESIGNED: _____ CHECKED: _____ DATE: _____ SCALE: _____
DRAWN: _____ FILE NO.: _____ SHEET: S-24 OF S-59

26-01

RECORD DRAWINGS 12/19/89