

3277 Fruitville Road
Bldg A, Suite 2
Sarasota, Florida 34237
Phone: 941.365.4771
Fax: 941.365.4779

Engineers
Surveyors
Architects
Planners
Landscape Architects
Environmental Scientists
Construction Management
Traffic / Transportation

Eng. C.O.A. No. 3215
Survey L.B. No. 7143
Arch. Lic. No. AA2600926
Landscp. Lic. No. LC0000298
© 2013

NATHAN J. KRAGT, P.E.
68972

NJK
NJK
By

REVISION PER ADDENDUM NO. 1
PHASE I CONSTRUCTION PLANS

Revision

Date

No.

GEN DET

File:

Designed by: NJK
Drawn by: KMU
Checked by: JAB
Approved by: NJK
Scale: NTS
Date: 12/30/11
JOB NUMBER: M13102

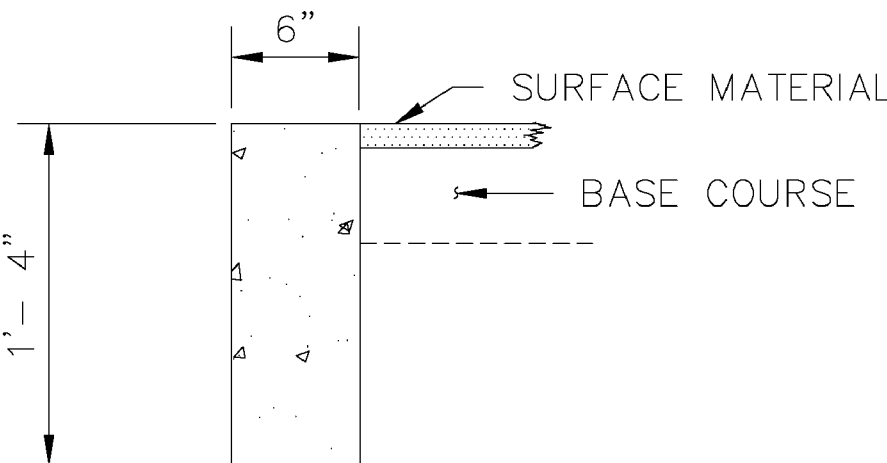
GENERAL DETAILS SHEET

LAKEWOOD RANCH PARK
SITE IMPROVEMENTS

MANATEE COUNTY, FLORIDA

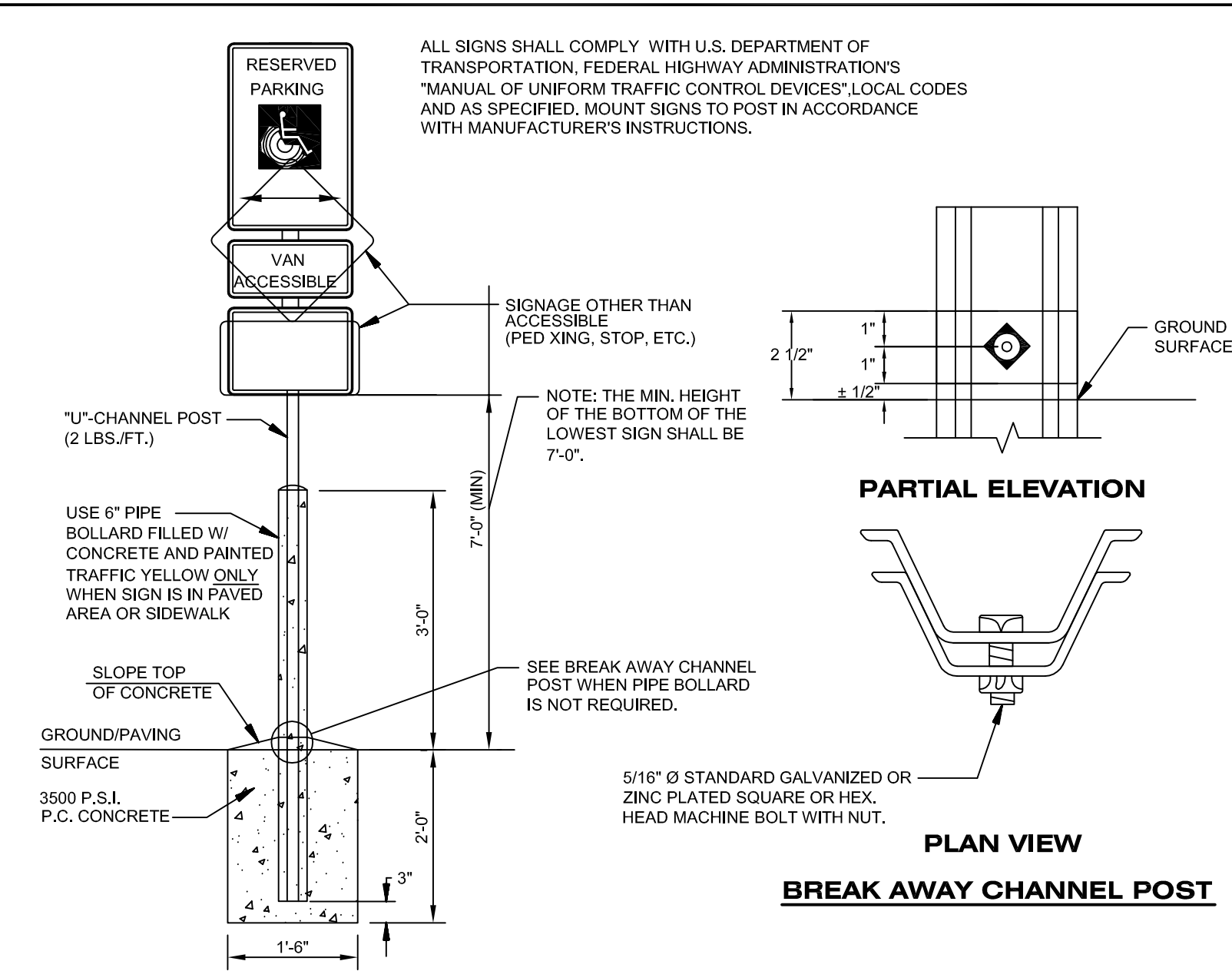
Sheet No.

C-9



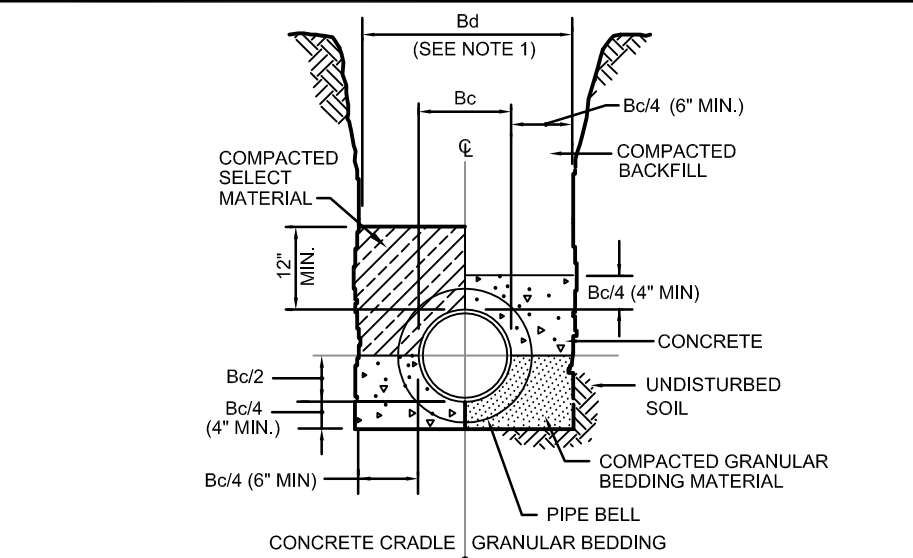
RIBBON CURB

N.T.S.

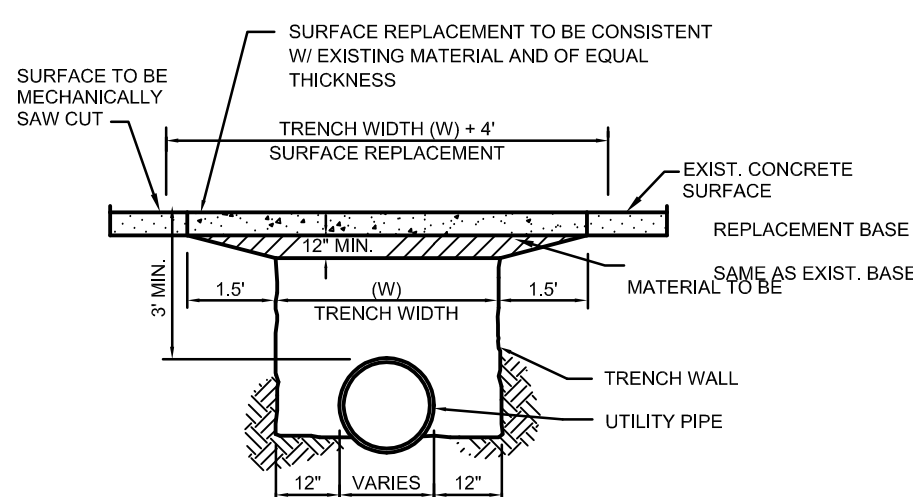


SITE SIGN BASE DETAILS

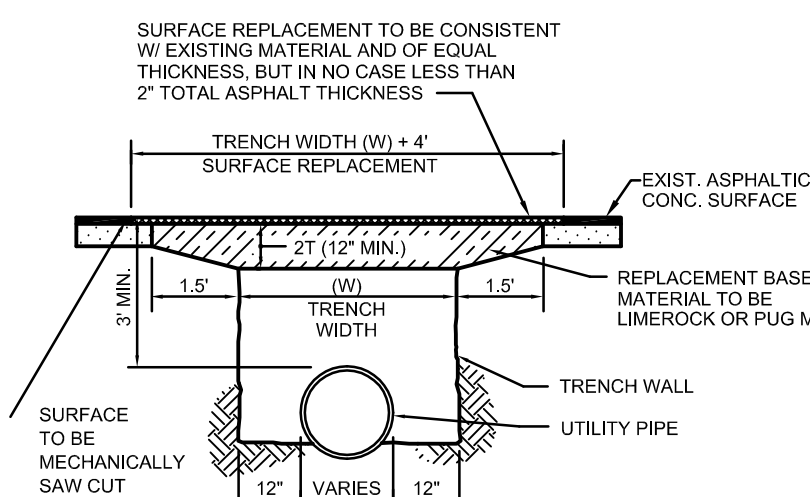
N.T.S.



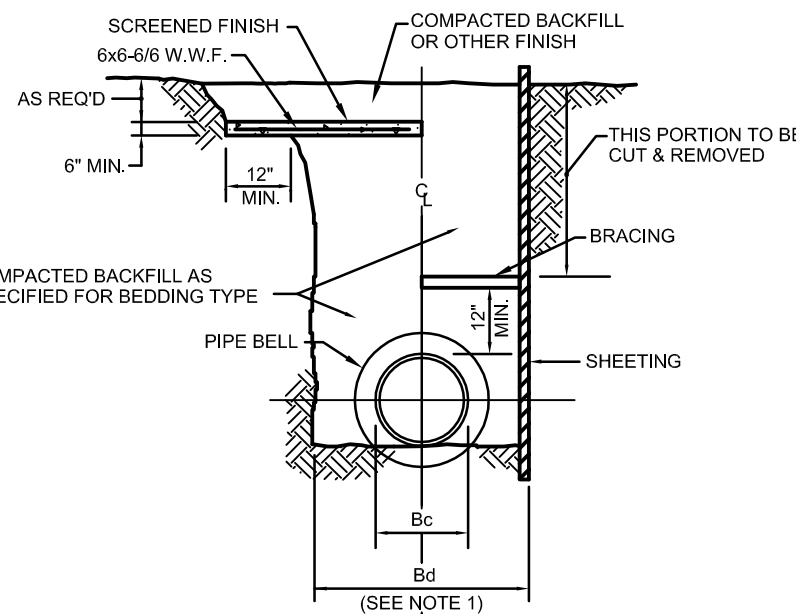
CLASS 'A' BEDDING SPECIAL CONDITIONS



CLASS 'B' BEDDING NORMAL CONDITIONS



CLASS 'C' BEDDING FOR CONCRETE



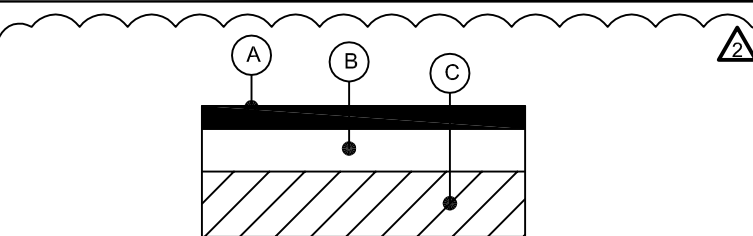
STANDARD ROADWAY OPEN CUT DETAIL

- Bc = PIPE O.D.
Bd = TRENCH WIDTH AT TOP OF PIPE
MAX. Bd = Bc + 24"
MIN. Bd = MAX. DIM. OF BELL + 8" (UNSHEETED TRENCH)
- DEPTH FOR REMOVAL OF UNSUITABLE MATERIAL SHALL BE AS REQUIRED TO REACH SUITABLE FOUNDATION FOR NON-CUSHIONING MATERIAL. DEPTH SHALL BE 6" BELOW BOTTOM OF UTILITY.
- SHEETING SHALL BE DRIVEN BELOW THE UTILITY INVERT IF REQUIRED FOR LATERAL SUPPORT OR UNSUITABLE MATERIAL REMOVAL WHERE DRIVEN BELOW PIPE INVERT. SHEETING SHALL BE CUT OFF A MINIMUM OF 12" ABOVE TOP OF PIPE, OR HIGHER AS AUTHORIZED BY ENGINEER, AND LEFT IN PLACE. IN NO CASE SHALL SHEETING LEFT IN PLACE EXTEND HIGHER THAN 30" BELOW SURFACE GRADE UNLESS SPECIFICALLY APPROVED. BRACING SHALL BE PROVIDED AS REQUIRED.
- PROTECTIVE CONCRETE SLABS ARE REQUIRED WHENEVER DEPTH OF COVER IS LESS THAN 36".
- BACKFILL TO BE COMPACTED TO 98% DENSITY OF AASHTO T-180 MODIFIED PROCTOR IN AREAS TO BE PAVED AND 95% IN OTHERS.

BEDDING AND TRENCHING NOTES

BEDDING AND TRENCHING DETAILS

N.T.S.

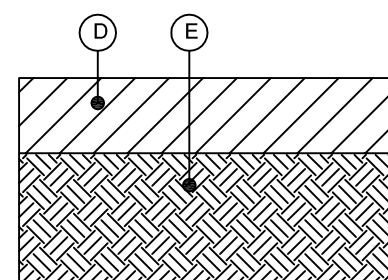


- (A) 2" TYPE SP ASPHALT
(B) 8" FDOT LIMEROCK BASE - SHELL MAY BE USED FOR BASE MATERIAL PROVIDED IT MEETS FDOT REQUIREMENTS AND IT SHOULD BE COMPACTED TO A MINIMUM OF 98% OF ITS MAXIMUM DRY DENSITY AS DETERMINED BY AASHTO T-180.

CRUSHED CONCRETE (RECYCLED CONCRETE) MAY ALSO BE USED FOR BASED MATERIAL. THE CRUSHED CONCRETE SHOULD HAVE A MINIMUM LBR 180 AND IT SHOULD BE COMPACTED TO A MINIMUM OF 98% OF ITS MAXIMUM DRY DENSITY AS DETERMINED BY AASHTO T-180.

- (C) 12" STABILIZED SUBGRADE - STABILIZATION OF SUBGRADE SHOULD BE ACHIEVED WITH LIMEROCK, SHELL OR RECYCLED CONCRETE IF STABILIZATION IS REQUIRED TO ACHIEVE A MINIMUM LBR OF 40. SUBGRADE SHOULD BE COMPACTED TO A MINIMUM 98% OF ITS MAXIMUM DENSITY AS DETERMINED BY AASHTO T-180.

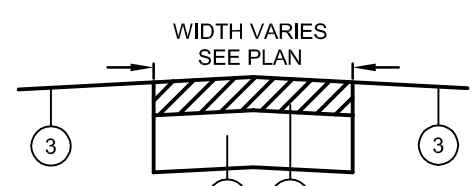
LIGHT DUTY ASPHALT PAVEMENT



- (D) 5" UNREINFORCED CONCRETE WITH A MINIMUM COMPRESSIVE STRENGTH OF 4000 PSI AT 28 DAYS. INSTALL 15' X 15' MAXIMUM CONTROL JOINT SPACING @ 1 1/4 INCH DEPTH.

- (E) 12" OF COMPACTED CLEAN SAND (< 12% PASSING A NO. 200 SIEVE) COMPACTED TO AT LEAST 98% MODIFIED PROCTOR MAXIMUM DRY DENSITY (ASTM D-1557, AASHTO T-180).

HEAVY DUTY CONCRETE PAVEMENT



- (1) 4" FDOT BANK RUN SHELL. SHELL SHALL BE LEVELED AND COMPACTED.
(2) 6" CLEAN SAND STABILIZED BASE. MINIMUM LBR 40 COMPACTED TO 98% T180 AASHTO.
(3) SOD / GROUND COVER (REFER TO LANDSCAPE PLANS)

STABILIZED SHELL DRIVE DETAIL

- NOTE:
1. BASE MATERIAL SHALL BE EXTENDED A MINIMUM OF 1 FOOT BEYOND THE ASPHALTIC CONCRETE AND SUB-BASE SHALL BE EXTENDED 1 FOOT MIN. BEYOND THE BASE.
2. CONCRETE PAVEMENT SHOULD BE CONSTRUCTED ONLY OVER STABLE AND SMOOTH COMPACTED SUBGRADES. ANY SURFACE DISTURBANCES OR WHEEL RUTTING SHOULD BE PREPARED PRIOR TO PLACEMENT OF CONCRETE.
3. THE SUBGRADE SHOULD BE THOROUGHLY WETTED IMMEDIATELY PRIOR TO THE PLACEMENT OF CONCRETE TO MINIMIZE ABSORPTION OF MOISTURE FROM THE CONCRETE DURING CURING.
4. CONCRETE PAVEMENT THICKNESS SHOULD BE UNIFORM THROUGHOUT, WITH THE EXCEPTION OF CURBING OR THICKENED EDGES.

PAVING DETAILS

N.T.S.