



NATHAN J. KRAGT, P.E.
69272

		NJK	△	
Designed by:	KMU	△		
Drawn by:	JAB	△		
Checked by:	NJK	△		
Approved by:	1""=120'	△		
Date:	12/30/11	△		
JOB NUMBER:	M13102	△	4/12/12	
FILE:	SOP	No.	Date	NJK
	Revision	By		

OVERALL SITE DIMENSION AND PHASING PLAN	LAKEWOOD RANCH PARK SITE IMPROVEMENTS	MANATEE COUNTY, FLORIDA
--	--	-------------------------

Sheet No.

C-5

BUILDING S.F. TABLE		
EXISTING BUILDING STRUCTURES:		
BUILDING DESCRIPTION	S.F.	NOTE
MOBILE BUILDING	556	
MULTI-USE BUILDING	2,664	
PAVILLION	1,012	
BULLDOG BUILDING	5,336	
MAINTENANCE BUILDING	3,379	
RESTROOM / CONCESSION	1,352	TWO STORY
SHED	593	
RESTROOM / CONCESSION	2,340	TWO STORY
SHED	468	
LOCKER ROOM BUILDING	2,146	TWO STORY
TOTAL	19,753	
PROPOSED BUILDING STRUCTURES:		
BUILDING DESCRIPTION	S.F.	NOTE
MULTI-USE BUILDING	2,548	PHASE 12
LOCKER ROOM / FIELD HOUSE	6,000	PHASE 7
PAVILLION	1,325	PHASE 8
RESTROOM / CONCESSION	2,340	TWO STORY - PHASE 11
PAVILLION	1,629	PHASE 2
PAVILLION	1,325	PHASE 10
SUB-TOTAL	15,207	
FUTURE BLDG. SQUARE FOOTAGE	20,000	FUTURE PHASES
TOTAL	54,960	APPROVED PER DTS # 20100346

1. PROJECT AREA IS 148.18 (PARCEL A & B).
2. FLOOR AREA RATIO:
 - PREVIOUSLY APPROVED BUILDING SQUARE FOOTAGE WITHIN PARK: 10,600 S.F.
 - EXISTING BUILDING SQUARE FOOTAGE WITHIN PARK: 19,753 S.F.
 - PROPOSED BUILDING SQUARE FOOTAGE WITHIN PARK: 15,207 S.F.
 - FULL BUILDING SQUARE FOOTAGE WITHIN PARK: 20,000 S.F.
 - TOTAL BUILDING SQUARE FOOTAGE WITHIN PARK: (EXISTING PLUS PROPOSED) 34,960 S.F.
 - FLOOR AREA RATIO: 54,960 S.F. / 6,454,721 S.F. = 0.0085
3. PARKING
 - EXISTING PARKING WITHIN PARK: 641 SPACES
 - PROPOSED PARKING WITHIN PARK: 284 SPACES
 - TOTAL PARKING: 925 SPACES
 - ASSUME EXISTING PARKING AREAS PROVIDE ADEQUATE ACCESSIBLE SPACES.
 - REQUIRED ACCESSIBLE PARKING SPACES FOR PROPOSED PARKING AREAS = 7 SPACES
 - PROVIDED ACCESSIBLE PARKING SPACES FOR PROPOSED PARKING AREAS= 8 SPACES
4. PROPOSED BUILDING HEIGHTS WILL NOT EXCEED 2-STORY OR 35'.
5. OPEN SPACE
 - EXISTING OPEN SPACE: ±127.76 ACRES OR 83%
 - PROPOSED OPEN SPACE: ±117.84 ACRES OR 80%

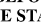
1. NO NEW FIELD LIGHTING IS PROPOSED.
2. REFER TO SUBSEQUENT SHEETS FOR PROPOSED BUILDING CORNER NORTHING AND EASTING COORDINATES.
3. START OF CONSTRUCTION: JUNE 2012

END OF CONSTRUCTION: TO BE DETERMINED DEPENDING ON FUNDING

4. FLOOD ZONE "X" PER FIRM PANEL NO. 354-C AND 360-C.
5. THERE ARE NO KNOWN ACTIVE WELLS IN THE PROPOSED CONSTRUCTION AREA.

PHASING TABLE			PHASING TABLE		
PHASE	HATCH PATTERN	DESCRIPTION OF WORK	PHASE	HATCH PATTERN	DESCRIPTION OF WORK
1		<p>GENERAL SITE IMPROVEMENTS: INCLUDES THE PROPOSED POND IN THE NORTH EAST CORNER OF THE SITE AND THE NECESSARY STORMWATER INFRASTRUCTURE TO SERVE IT. THE FILL EXCAVATED FROM THIS POND SHALL BE PLACED IN THE FUTURE PARKING AREAS (PHASE 3) TO BRING IT TO ELEVATION FROM THE EXCAVATED POND. PHASE 1 CONSTRUCTION ALSO INCLUDES THE STORMWATER PIPING/INLETS IN THE CENTRAL PLAZA/PLAYGROUND AREA TO HELP ALLEVIATE FLOODING IN THIS AREA. PHASE 1 CONSTRUCTION IS NECESSARY TO BRING THE EXISTING SITE INTO COMPLIANCE WITH SWP/MDM AND THEREFORE SHALL BE CONSTRUCTED AS SOON AS POSSIBLE AFTER OBTAINING ALL NECESSARY CONSTRUCTION PERMITS.</p> <p>UTILITY IMPROVEMENTS: NONE</p> <p>LANDSCAPE/IRRIGATION IMPROVEMENTS: NONE</p>	7		<p>GENERAL SITE IMPROVEMENTS: INCLUDES CONSTRUCTION OF A PROPOSED LOCKER ROOM/FIELDHOUSE AND BATTING CAGE FACILITY. IMPROVEMENTS ALSO INCLUDE THE CONSTRUCTION OF THE EMERGENCY ACCESS EAST OF THE NEW BUILDING FACILITY.</p> <p>UTILITY IMPROVEMENTS: INCLUDES INSTALLATION OF WATER SERVICE LINE AND SEWER SERVICE LINES TO THE PROPOSED BUILDING.</p> <p>LANDSCAPE/IRRIGATION IMPROVEMENTS: NONE</p>
2		<p>GENERAL SITE IMPROVEMENTS: INCLUDES THE NEW SIDEWALKS, PAVILION, FLAG POLE FEATURE, AND CLAY STORAGE AREA IN THE CENTRAL PLAZA/PLAYGROUND AREA. THESE IMPROVEMENTS WILL BE THE FIRST IMPROVEMENTS CONSTRUCTED ONCE PHASE 1 IS COMPLETE. CONSTRUCTION TIMING OF THESE IMPROVEMENTS DEPENDS LARGELY ON AVAILABLE FUNDING.</p> <p>UTILITY IMPROVEMENTS: INCLUDES INSTALLATION OF WATER FOUNTAIN</p> <p>LANDSCAPE/IRRIGATION IMPROVEMENTS: INCLUDES TREES, SHRUBS, GROUNDCOVER AND CORRESPONDING IRRIGATION SYSTEM AS SHOWN ON LANDSCAPE AND IRRIGATION PLANS</p>	8		<p>GENERAL SITE IMPROVEMENTS: INCLUDES CONSTRUCTION OF A NEW PAVILION AND PLAYGROUND AREA.</p> <p>UTILITY IMPROVEMENTS: NONE</p> <p>LANDSCAPE/IRRIGATION IMPROVEMENTS: NONE</p>
3		<p>GENERAL SITE IMPROVEMENTS: INCLUDES NEW PAVED PARKING AREA AND ASSOCIATED IMPROVEMENTS. CONSTRUCTION TIMING OF THESE IMPROVEMENTS DEPENDS LARGELY ON AVAILABLE FUNDING.</p> <p>UTILITY IMPROVEMENTS: NONE</p> <p>LANDSCAPE/IRRIGATION IMPROVEMENTS: INCLUDES TREES, SHRUBS, GROUNDCOVER AND CORRESPONDING IRRIGATION SYSTEM AS SHOWN ON LANDSCAPE AND IRRIGATION PLANS. ROADWAY BUFFERS ALONG LAKEWOOD RANCH BLVD. AND MALACHITE DRIVE SHALL BE INSTALLED WITH THE CONSTRUCTION OF THE FIRST PARKING LOT (FIRST CONSTRUCTED OUT OF PHASE 3 THRU 6)</p>	9		<p>GENERAL SITE IMPROVEMENTS: INCLUDES CONSTRUCTION OF THE PROPOSED SIDEWALK/EXERCISE TRAIL AND CORRESPONDING SITE AMENITIES</p> <p>UTILITY IMPROVEMENTS: NONE</p> <p>LANDSCAPE/IRRIGATION IMPROVEMENTS: NONE</p>
4		<p>GENERAL SITE IMPROVEMENTS: INCLUDES NEW PAVED PARKING AREA AND ASSOCIATED IMPROVEMENTS. IMPROVEMENTS ALSO INCLUDE A NEW SIDEWALK FROM THE PARKING LOT TO THE EXISTING SIDEWALK IN BETWEEN THE EXISTING SOFTBALL FIELDS. CONSTRUCTION TIMING OF THESE IMPROVEMENTS DEPENDS LARGELY ON AVAILABLE FUNDING.</p> <p>UTILITY IMPROVEMENTS: NONE</p> <p>LANDSCAPE/IRRIGATION IMPROVEMENTS: INCLUDES TREES, SHRUBS, GROUNDCOVER AND CORRESPONDING IRRIGATION SYSTEM AS SHOWN ON LANDSCAPE AND IRRIGATION PLANS. ROADWAY BUFFERS ALONG LAKEWOOD RANCH BLVD. AND MALACHITE DRIVE SHALL BE INSTALLED WITH THE CONSTRUCTION OF THE FIRST PARKING LOT (FIRST CONSTRUCTED OUT OF PHASE 3 THRU 6)</p>	10		<p>GENERAL SITE IMPROVEMENTS: INCLUDES CONSTRUCTION OF A NEW PAVILION AND PLAYGROUND AREA.</p> <p>UTILITY IMPROVEMENTS: NONE</p> <p>LANDSCAPE/IRRIGATION IMPROVEMENTS: NONE</p>
5		<p>GENERAL SITE IMPROVEMENTS: INCLUDES NEW PAVED PARKING AREA AND ASSOCIATED IMPROVEMENTS. WORK INCLUDES THE ADA RAMPS AND ASSOCIATED CROSSWALK ALONG MALACHITE DRIVE. CONSTRUCTION TIMING OF THESE IMPROVEMENTS DEPENDS LARGELY ON AVAILABLE FUNDING.</p> <p>UTILITY IMPROVEMENTS: NONE</p> <p>LANDSCAPE/IRRIGATION IMPROVEMENTS: INCLUDES TREES, SHRUBS, GROUNDCOVER AND CORRESPONDING IRRIGATION SYSTEM AS SHOWN ON LANDSCAPE AND IRRIGATION PLANS. ROADWAY BUFFERS ALONG LAKEWOOD RANCH BLVD. AND MALACHITE DRIVE SHALL BE INSTALLED WITH THE CONSTRUCTION OF THE FIRST PARKING LOT (FIRST CONSTRUCTED OUT OF PHASE 3 THRU 6)</p>	11		<p>GENERAL SITE IMPROVEMENTS: INCLUDES CONSTRUCTION OF A PROPOSED RESTROOM/CONCESSION BUILDING.</p> <p>UTILITY IMPROVEMENTS: INCLUDES INSTALLATION OF WATER SERVICE LINE AND SEWER SERVICE LINES TO THE PROPOSED BUILDING.</p> <p>LANDSCAPE/IRRIGATION IMPROVEMENTS: NONE</p>
6		<p>GENERAL SITE IMPROVEMENTS: INCLUDES NEW PAVED PARKING AREA AND ASSOCIATED IMPROVEMENTS. CONSTRUCTION TIMING OF THESE IMPROVEMENTS DEPENDS LARGELY ON AVAILABLE FUNDING.</p> <p>UTILITY IMPROVEMENTS: NONE</p> <p>LANDSCAPE/IRRIGATION IMPROVEMENTS: INCLUDES TREES, SHRUBS, GROUNDCOVER AND CORRESPONDING IRRIGATION SYSTEM AS SHOWN ON LANDSCAPE AND IRRIGATION PLANS. ROADWAY BUFFERS ALONG LAKEWOOD RANCH BLVD. AND MALACHITE DRIVE SHALL BE INSTALLED WITH THE CONSTRUCTION OF THE FIRST PARKING LOT (FIRST CONSTRUCTED OUT OF PHASE 3 THRU 6)</p>	12		<p>GENERAL SITE IMPROVEMENTS: INCLUDES CONSTRUCTION OF A PROPOSED MULTI-USE BUILDING EXPANSION.</p> <p>UTILITY IMPROVEMENTS: NONE</p> <p>LANDSCAPE/IRRIGATION IMPROVEMENTS: WHEN FUNDING IS AVAILABLE, THE COUNTY SHALL PLANT A VEGETATIVE BUFFER ALONG THE WESTERN PROPERTY LINE OF LAKEWOOD RANCH PARK TO DEAL WITH THE LIGHT AND NOISE ISSUES EXPRESSED BY THE ADJACENT RESIDENTS. AT A MINIMUM, THE BUFFER SHALL BE INSTALLED PRIOR TO THE ISSUANCE OF THE LAST CERTIFICATE OF OCCUPANCY. REFER TO THE LANDSCAPE AND IRRIGATION PLANS FOR DETAILS.</p>
			13		<p>GENERAL SITE IMPROVEMENTS: NONE</p> <p>UTILITY IMPROVEMENTS: NONE</p> <p>LANDSCAPE/IRRIGATION IMPROVEMENTS: WHEN FUNDING IS AVAILABLE, THE COUNTY SHALL PLANT A VEGETATIVE BUFFER ALONG THE WESTERN PROPERTY LINE OF LAKEWOOD RANCH PARK TO DEAL WITH THE LIGHT AND NOISE ISSUES EXPRESSED BY THE ADJACENT RESIDENTS. AT A MINIMUM, THE BUFFER SHALL BE INSTALLED PRIOR TO THE ISSUANCE OF THE LAST CERTIFICATE OF OCCUPANCY. REFER TO THE LANDSCAPE AND IRRIGATION PLANS FOR DETAILS.</p>

BEFORE YOU DIG!
CALL SUNSHINE STATE ONE CALL OF FLORIDA
 AT LEAST TWO FULL BUSINESS DAYS BEFORE
 DIGGING OR DISTURBING EARTH

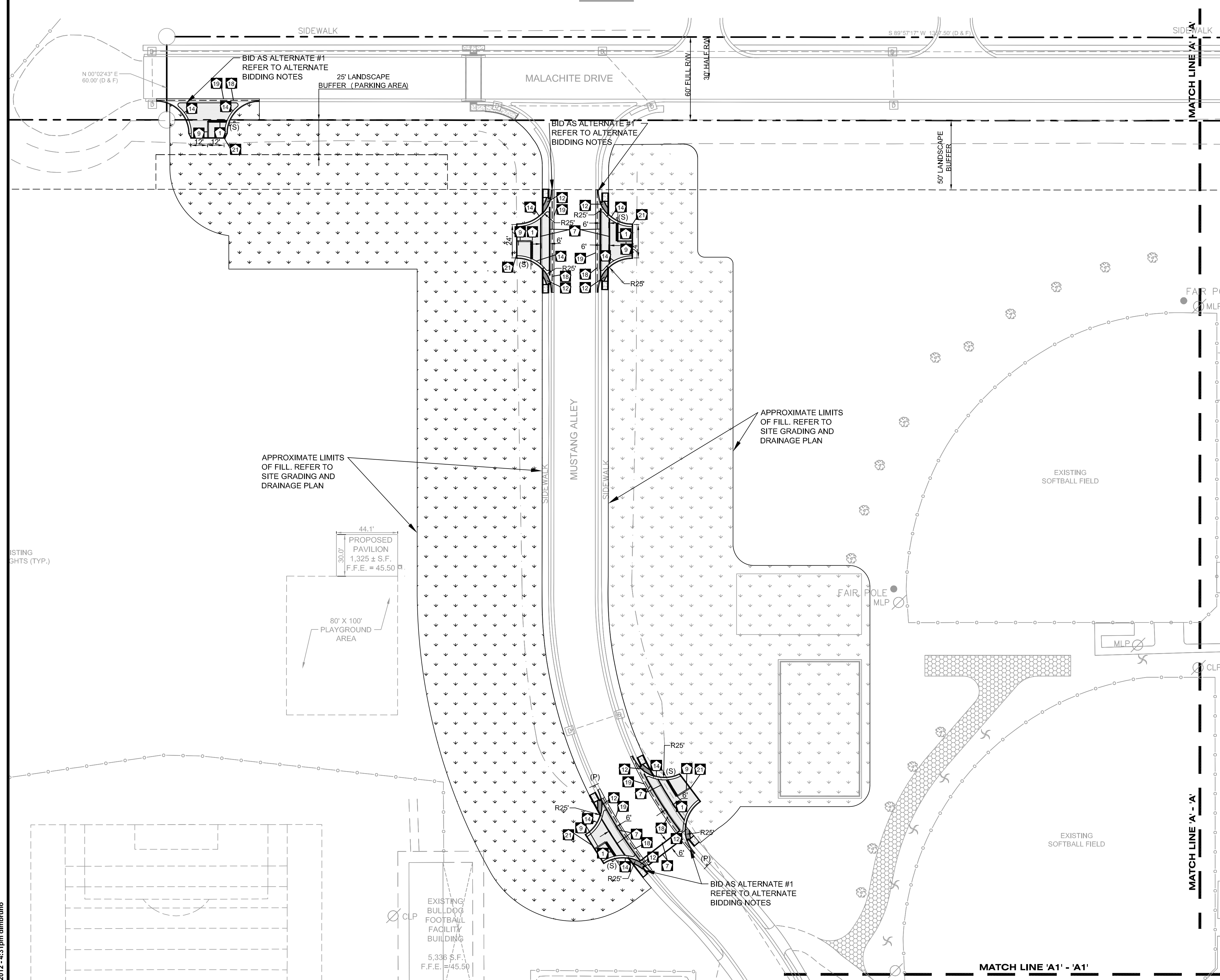
 

Know what's below.
 Call before you dig.


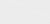

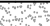
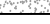



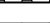
NOTICE
THE SIZE OF THESE PLANS MAY HAVE BEEN SLIGHTLY ALTERED BY REPRODUCTION PROCESSES. THIS MUST BE CONSIDERED WHEN SCALING ANY REPRODUCED PLANS FOR THE PURPOSE OF COLLECTING DATA.

**"CONSENT IS HEREBY GRANTED SPECIFICALLY TO
GOVERNMENTAL AGENCIES TO REPRODUCE THIS
DOCUMENT IN COMPLIANCE WITH F.S. CHAPTER 119."**

VIEW A



SITE LEGEND

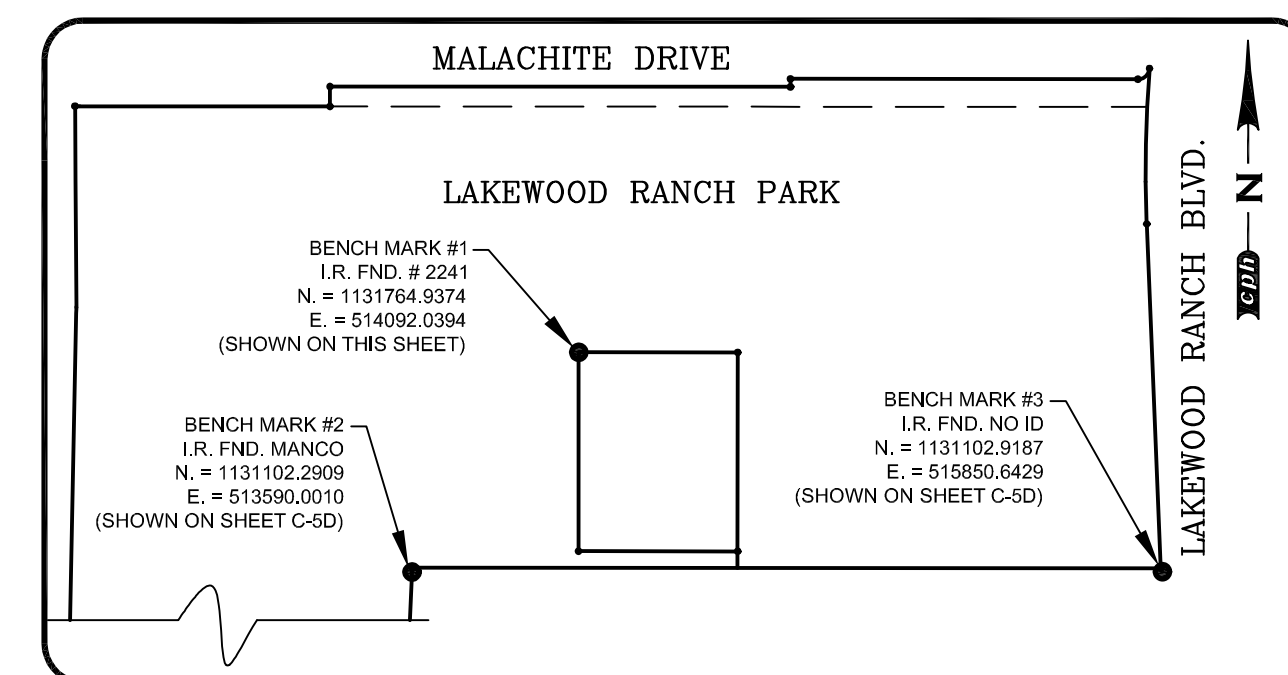
- | | | |
|---|--|---|
|  | | BOUNDARY/PROPERTY LINE |
|  | | LIGHT DUTY ASPHALT PAVEMENT - SEE GENERAL DETAILS SHEET |
|  | | CONCRETE SIDEWALK - SEE MANATEE COUNTY TRANSPORTATION DEPARTMENT DETAIL SHEET |
|  | | COMPACTED SHEL - SEE GENERAL DETAILS SHEET |
|  | | HEAVY DUTY CONCRETE PAVEMENT - SEE GENERAL DETAILS SHEET |
|  | | PARKING SPACE COUNT NUMBER |
|  | | (S) STOP SIGN (R1-1) |
|  | | (H) ACCESSIBLE PARKING SPACE SIGN - SEE GENERAL DETAILS SHEET |
|  | | (P) PEDESTRIAN CROSSING SIGN (W11-2 AND W16-7PL) |

KEYNOTE LEGEND

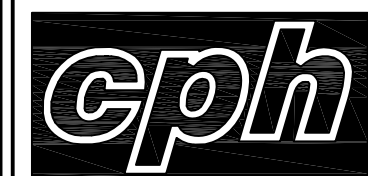
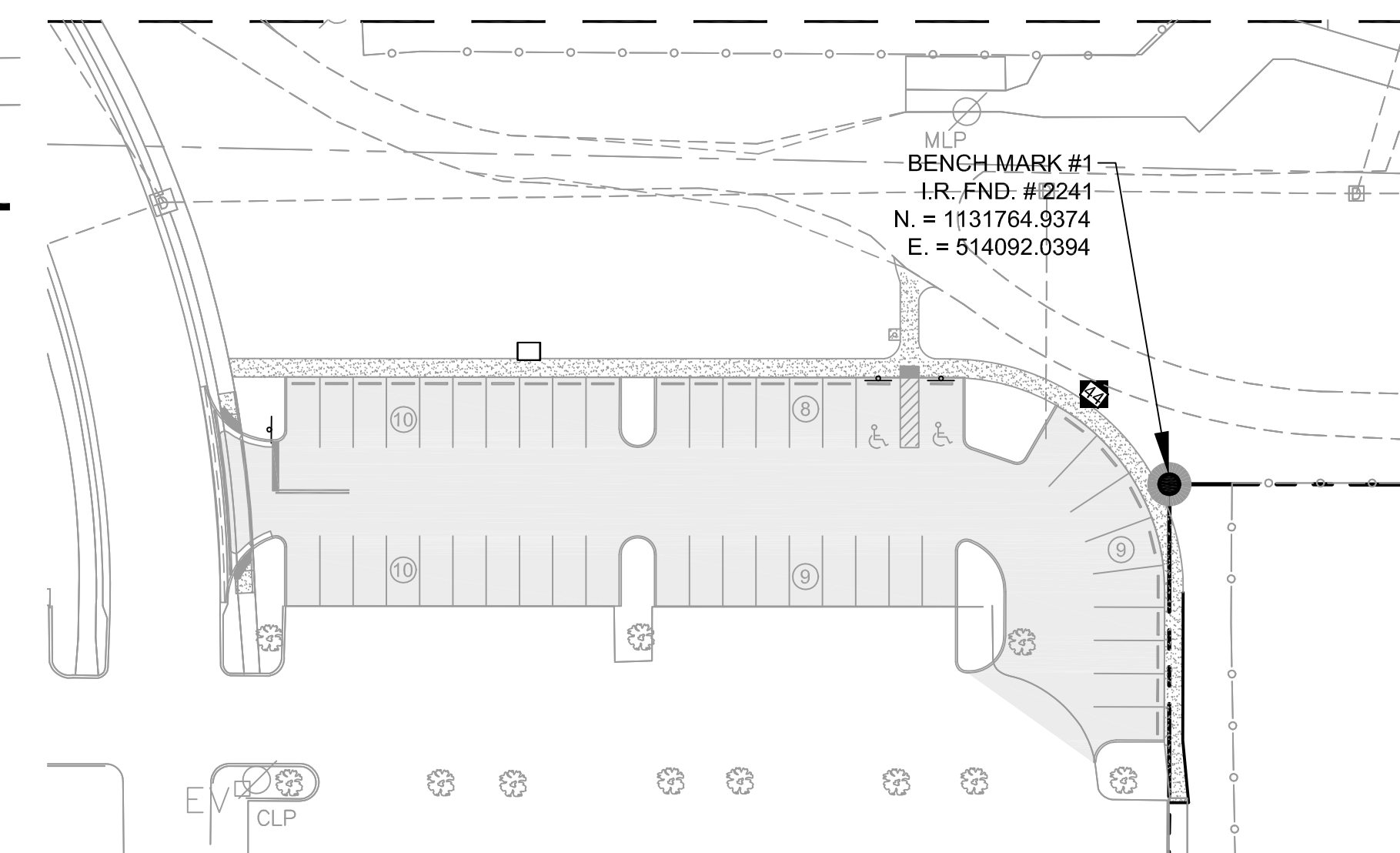
- 24" WIDE SOLID WHITE PAINTED STOP BAR PER FOOT INDEX NO. 17346 (TYP).
- 4" WIDE SINGLE WHITE PAVEMENT PARKING STRIPPE (TYP).
- ACCESSIBLE PARKING SPACE TYPICAL - REFER TO GENERAL DETAILS SHEET FOR ACCESSIBLE PARKING SPACE SIZE, SIGN AND SYMBOLS.
- CONCRETE WHEEL STOP - REFER TO GENERAL DETAILS SHEET.
- CONCRETE SIDEWALK SEE MANATEE COUNTY TRANSPORTATION DEPARTMENT DETAIL SHEET
- BENCH - INSTALL WAUSAU TIE BENCH PRODUCT M2017 ERGO BENCH PER MANUFACTURER'S RECOMMENDATIONS. INSTALL 7" X 3" CONCRETE PAD UNDER BENCH (WHERE APPLICABLE).
- PEDESTRIAN CROSSWALK, STRIPING PER FOOT INDEX #17346
- TRASH RECEPTACLE ON 3' SQUARE CONCRETE PAD (WHERE APPLICABLE) BECAUSE "WEST END RECEPTACLE" OR "PROPOSED EQUAL, REFER TO GENERAL DETAILS SHEET."
- 6" WIDE DOUBLE YELLOW LINE STRAPE ON PAVEMENT.
- TYPE "D" CURB - REFER TO MANATEE COUNTY TRANSPORTATION DEPARTMENT DETAIL SHEET
- 3" WIDE DETECTABLE WARNING PER FLORIDA BUILDING CODE - REFER TO MANATEE COUNTY TRANSPORTATION DEPARTMENT DETAIL SHEET.
- ACCESSIBLE RAMP W/ 3" WIDE DETECTABLE WARNING PER FLORIDA CODE - REFER TO MANATEE COUNTY TRANSPORTATION DEPARTMENT DETAIL SHEET.
- ACCESSIBLE RAMP W/ 3" WIDE DETECTABLE WARNING PER FOOT INDEX NO. 304 & MANATEE COUNTY TRANSPORTATION DEPARTMENT DETAIL SHEET
- TYPE "C" CURB AND GUTTER PER FOOT INDEX NO. 300
- 5' ACCESSIBLE PARKING STRIPPE - REFER TO GENERAL DETAILS SHEET
- DRINKING FOUNTAIN - REFER TO UTILITY PLANS
- TYPE "AB" MODIFIED CURB AND GUTTER. REFER TO MANATEE COUNTY DETAIL SHEET 301
- 3" VALLEY CROSSING - REFER TO MANATEE COUNTY DETAIL 201.6
- SAWCUT EXISTING PAVEMENT / CURB AND PROVIDE SMOOTH TRANSITION TO PROPOSED IMPROVEMENTS.
- 2" LONG TRANSITION FROM 0.5" TALL CURB TO ZERO CURB.
- RIBBON CURB - REFER TO GENERAL DETAILS SHEET

SITE NOTES:

1. ALL WORK AND MATERIALS SHALL COMPLY WITH ALL CITY/COUNTY REGULATIONS AND CODES AND O.S.H.A. STANDARDS.
2. CONTRACTOR SHALL REFER TO THE ARCHITECTURAL PLANS FOR PRECISE BUILDING DIMENSIONS AND EXACT BUILDING UTILITY ENTRANCE LOCATIONS.
3. ALL RADII SHALL BE 3' INTERIOR AND 10' EXTERIOR UNLESS OTHERWISE NOTED.
4. ALL PERIMETER CURBING AND LANDSCAPED ISLAND DIMENSIONS ARE TO BACK OF CURB. ALL OTHER DIMENSIONS ARE TO FACE OF CURB UNLESS OTHERWISE NOTED.
5. ALL ON-SITE STRIPING SHALL BE REFLECTIVE. ALL STRIPING WITHIN THE COUNTY RIGHT OF WAY SHALL BE THERMOPLASTIC.



BENCHMARK LOCATION MAP
N.T.S.



**3277 Fruitville Road
Bldg A, Suite 2
Sarasota, Florida 34237
Phone: 941.365.4771
Fax: 941.365.4779**

*Engineers
Surveyors
Architects
Planners*

Landscape Architects
Environmental Scientists

*Construction
Management
Traffic/Transportation*

Eng. C.O.A. No. 3215
Survey L.B. No. 7143
Arch. Lic. No. AA260092
Landscp. Lic. No. LC000029
© 2012

NATHAN J. KRAGT, P.E.
69272

Designed by:	NJK	△		
Drawn by:	DML	△		
Checked by:	JAB	△		
Approved by:	NJK	△		
Scale:	1"=40'	△		
Date:	12/30/11	△		
JOB NUMBER:	M13102	△	11/21/12	
PHASE CONSTRUCTION PLANS				
				NJK
				12

SITE DIMENSION PLAN

LAKWOOD RANCH PARK SITE IMPROVEMENTS

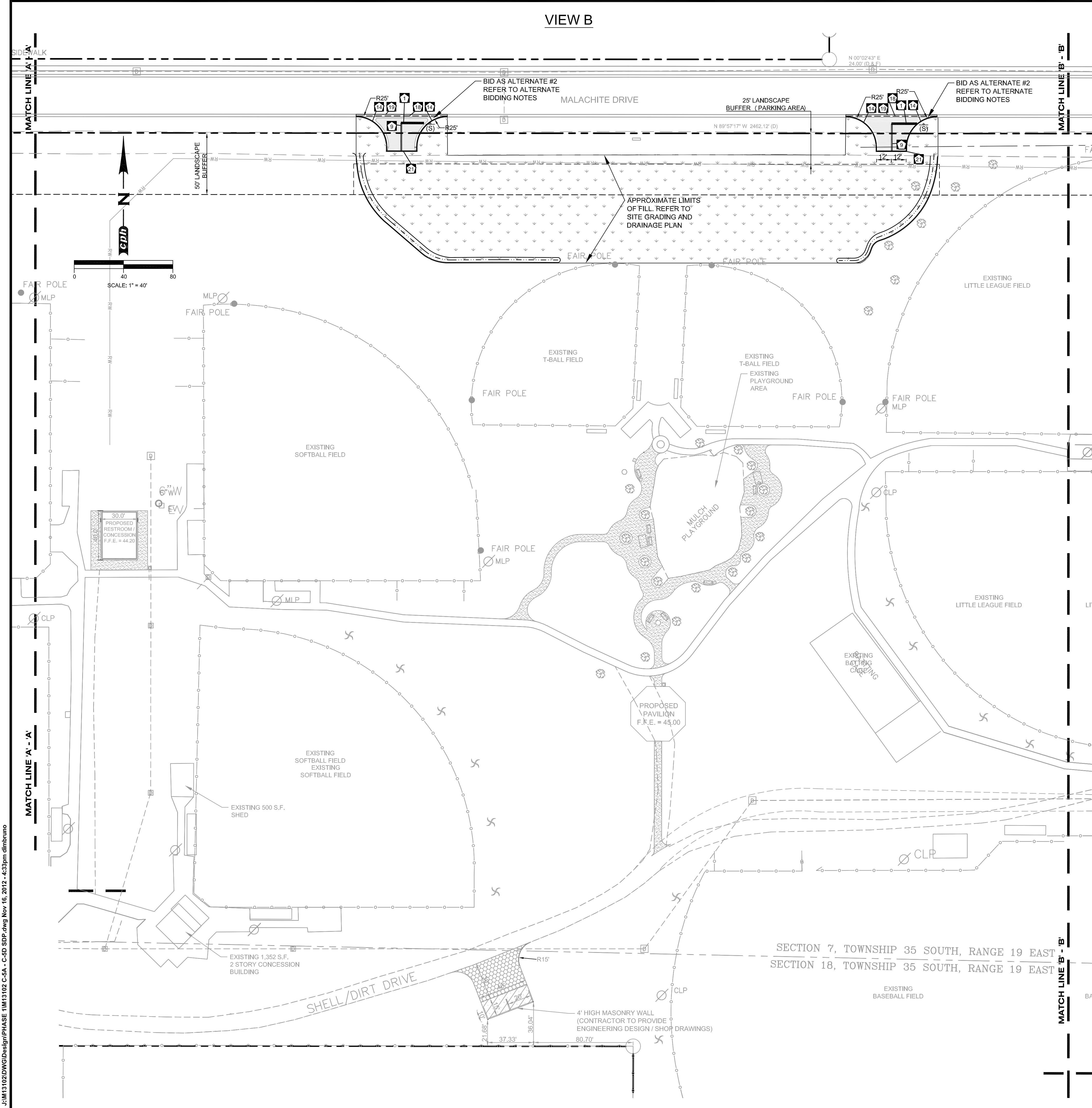
MANATEE COUNTY, FLORIDA

Sheet No.

C-5A



J:\M13102\DWG\Design\PHASE 1\13102 C-5A - C-5D SDP.dwg Nov. 16, 2012 - 4:33pm dimbruno



SITE LEGEND

- BOUNDARY/PROPERTY LINE
- LIGHT DUTY ASPHALT PAVEMENT - SEE GENERAL DETAILS SHEET
- CONCRETE SIDEWALK - SEE MANATEE COUNTY TRANSPORTATION DEPARTMENT DETAIL SHEET
- COMPACTED SHELL - SEE GENERAL DETAILS SHEET
- HEAVY DUTY CONCRETE PAVEMENT - SEE GENERAL DETAILS SHEET
- PARKING SPACE COUNT NUMBER
- STOP SIGN (R1-1)
- ACCESSIBLE PARKING SPACE SIGN - SEE GENERAL DETAILS SHEET

ALTERNATE #2 BIDDING NOTES:

THE CONTRACTOR SHALL BID THE FUTURE DRIVEWAY ACCESS POINTS AS AN ALTERNATE. IF THE ALTERNATE IS NOT SELECTED, CONTRACTOR SHALL PLACE FILL UP TO THE BACK SIDE OF THE EXISTING CURB WITHOUT DISTURBING THE CURB OR IMPEDING THE FLOW OF THE EXISTING DITCH. THE CONTRACTOR IS RESPONSIBLE TO REPLACE/REPAIR ANY DAMAGED INFRASTRUCTURE. IF THE ALTERNATE IS SELECTED BY THE OWNER, THE CONTRACTOR SHALL PROCEED WITH THE PAVED DRIVEWAY APRONS AND ASSOCIATED IMPROVEMENTS AS SHOWN.

SITE NOTES:

- ALL WORK AND MATERIALS SHALL COMPLY WITH ALL CITY/COUNTY REGULATIONS AND CODES AND O.S.M.A. STANDARDS.
- CONTRACTOR SHALL REFER TO THE ARCHITECTURAL PLANS FOR PRECISE BUILDING DIMENSIONS AND EXACT BUILDING UTILITY ENTRANCE LOCATIONS.
- ALL RADII SHALL BE 3' INTERIOR AND 10' EXTERIOR UNLESS OTHERWISE NOTED.
- ALL PERIMETER CURBING AND LANDSCAPED ISLAND DIMENSIONS ARE TO BACK OF CURB. ALL OTHER DIMENSIONS ARE TO FACE OF CURB UNLESS OTHERWISE NOTED.
- ALL ON-SITE STRIPING SHALL BE REFLECTIVE. ALL STRIPING WITHIN THE COUNTY RIGHT OF WAY SHALL BE THERMOPLASTIC.

KEYNOTE LEGEND

- 24" WIDE SOLID WHITE PAINTED STOP BAR PER FDOT INDEX NO. 17346 (TYP.)
- 4" WIDE SINGLE WHITE PAVEMENT PARKING STRIPE (TYP.)
- ACCESSIBLE PARKING SPACE TYPICAL - REFER TO GENERAL DETAILS SHEET FOR ACCESSIBLE PARKING SPACE SIZE, SIGN AND SYMBOL
- CONCRETE WHEEL STOP - REFER TO GENERAL DETAILS SHEET
- CONCRETE SIDEWALK SEE MANATEE COUNTY TRANSPORTATION DEPARTMENT DETAIL SHEET
- BENCH - INSTALL WAUSAU TILE BENCH (PRODUCT MP2017 ERGO BENCH) PER MANUFACTURERS RECOMMENDATIONS. INSTALL 7" X 3" CONCRETE PAD UNDER BENCH (WHERE APPLICABLE).
- PEDESTRIAN CROSSWALK, STRIPING PER FDOT INDEX #17346
- TRASH RECEPTACLE ON 3" SQUARE CONCRETE PAD (WHERE APPLICABLE) BEACON WEST END RECEPTACLE OR APPROVED EQUAL. REFER TO GENERAL DETAILS SHEET.
- 6" WIDE DOUBLE YELLOW LANE STRIPE ON PAVEMENT.
- TYPE "D" CURB - REFER TO MANATEE COUNTY TRANSPORTATION DEPARTMENT DETAIL SHEET
- 3" WIDE DETECTABLE WARNING PER FLORIDA BUILDING CODE - REFER TO MANATEE COUNTY TRANSPORTATION DEPARTMENT DETAIL SHEET
- ACCESSIBLE RAMP W/ 3" WIDE DETECTABLE WARNING PER FLORIDA CODE - REFER MANATEE COUNTY TRANSPORTATION DEPARTMENT DETAIL SHEET
- ACCESSIBLE RAMP W/ 2" WIDE DETECTABLE WARNING PER FDOT INDEX NO. 304 AND MANATEE COUNTY TRANSPORTATION DEPARTMENT DETAIL SHEET
- 2" TYPE "F" CURB AND GUTTER PER FDOT INDEX NO. 300
- 5' ACCESSIBLE PARKING STRIPING - REFER TO GENERAL DETAILS SHEET
- DRINKING FOUNTAIN - REFER TO UTILITY PLANS
- TYPE "AB" MODIFIED CURB AND GUTTER. REFER TO MANATEE COUNTY DETAILS 201.3.
- 3' VALLEY CROSSING. REFER TO MANATEE COUNTY DETAIL 201.6.
- SAWCUT EXISTING PAVEMENT / CURB AND PROVIDE SMOOTH TRANSITION TO PROPOSED IMPROVEMENTS.
- 2' LONG TRANSITION FROM 0.5' TALL CURB TO ZERO CURB.
- RIBBON CURB - REFER TO GENERAL DETAILS SHEET



3277 Fruitville Road
Bldg A, Suite 2
Sarasota, Florida 34237
Phone: 941.365.4771
Fax: 941.365.4779

Engineers
Surveyors
Architects
Planners
Landscape Architects
Environmental Scientists
Construction Management
Traffic / Transportation

Eng. C.O.A. No. 3215
Survey L.B. No. 7143
Arch. Lic. No. AA2600926
Landsc. Lic. No. LC0000298
© 2012

NATHAN J. KRAGGT, P.E.
68272

Designed by:	NJK	Drawn by:	KMU	Checked by:	JAB	Approved by:	NJK	Scale:	1"=40'	Date:	12/30/11	JOB NUMBER:	M13102	File:	SDP	No.	Date	11/21/12	Revision	PHASE I CONSTRUCTION PLANS	NJK	By								

SITE DIMENSION PLAN

LAKEWOOD RANCH PARK
SITE IMPROVEMENTS
MANATEE COUNTY, FLORIDA

Sheet No.
C-5B

VIEW C

MALACHITE DRIVE

PROPOSED
STORM WATER POND

	ELEV. (FT)	AREA (AC)
TOP	43.50	1.18
25 YR. DHWL	42.49	N/A
SHWL	41.00	0.98
LIT. SHELF	39.00	0.34
BOTTOM	33.00	0.29

PROPOSED
PAVILION
F.F.E. = 44.00

80' X 100'
PLAYGROUND
AREA

LAKEWOOD RANCH
BOULEVARD

SITE LEGEND

- BOUNDARY/PROPERTY LINE
- LIGHT DUTY ASPHALT PAVEMENT - SEE GENERAL DETAILS SHEET
- CONCRETE SIDEWALK - SEE MANATEE COUNTY TRANSPORTATION DEPARTMENT DETAIL SHEET
- COMPACTED SHEL - SEE GENERAL DETAILS SHEET
- HEAVY DUTY CONCRETE PAVEMENT - SEE GENERAL DETAILS SHEET
- PARKING SPACE COUNT NUMBER
- STOP SIGN (R1-1)
- ACCESSIBLE PARKING SPACE SIGN - SEE GENERAL DETAILS SHEET

KEYNOTE LEGEND

- 24" WIDE SOLID WHITE PAINTED STOP BAR PER FOOT INDEX NO. 17346 (TYP.)
- 4" WIDE SINGLE WHITE PAVEMENT PARKING STRIPE (TYP.)
- ACCESSIBLE PARKING SPACE TYPICAL - REFER TO GENERAL DETAILS SHEET FOR ACCESSIBLE PARKING SPACE SIZE, SIGN AND SYMBOL
- CONCRETE WHEEL STOP - REFER TO GENERAL DETAILS SHEET
- CONCRETE SIDEWALK SEE MANATEE COUNTY TRANSPORTATION DEPARTMENT DETAIL SHEET
- BENCH - INSTALL MANUSAL TILE BENCH (PRODUCT M2017 ERGO BENCH) PER MANUFACTURERS RECOMMENDATIONS. INSTALL 7' X 3' CONCRETE PAD UNDER BENCH (WHERE APPLICABLE).
- PEDESTRIAN CROSSWALK, STRIPING PER FOOT INDEX #17348
- TRASH RECEPTACLE ON 3' SQUARE CONCRETE PAD (WHERE APPLICABLE) BEACON "WEST END RECEPTACLE" OR APPROVED EQUAL. REFER TO GENERAL DETAILS SHEET.
- 6" WIDE DOUBLE YELLOW LANE STRIPE ON PAVEMENT.
- TYPE "D" CURB - REFER TO MANATEE COUNTY TRANSPORTATION DEPARTMENT DETAIL SHEET
- 3' WIDE DETECTABLE WARNING PER FLORIDA BUILDING CODE - REFER TO MANATEE COUNTY TRANSPORTATION DEPARTMENT DETAIL SHEET.
- ACCESSIBLE RAMP W/ 3' WIDE DETECTABLE WARNING PER FLORIDA CODE - REFER MANATEE COUNTY TRANSPORTATION DEPARTMENT DETAIL SHEET.
- ACCESSIBLE RAMP W/ 2' WIDE DETECTABLE WARNING PER FOOT INDEX NO. 304 AND MANATEE COUNTY TRANSPORTATION DEPARTMENT DETAIL SHEET.
- 2' TYPE "F" CURB AND GUTTER PER FOOT INDEX NO. 300
- 5' ACCESSIBLE PARKING STRIPING - REFER TO GENERAL DETAILS SHEET
- DRINKING FOUNTAIN - REFER TO UTILITY PLANS
- TYPE "AB" MODIFIED CURB AND GUTTER. REFER TO MANATEE COUNTY DETAILS 201.3.
- 3' VALLEY CROSSING. REFER TO MANATEE COUNTY DETAIL 201.6
- SAWCUT EXISTING PAVEMENT / CURB AND PROVIDE SMOOTH TRANSITION TO PROPOSED IMPROVEMENTS.
- 2' LONG TRANSITION FROM 0.5' TALL CURB TO ZERO CURB.
- RIBBON CURB - REFER TO GENERAL DETAILS SHEET

SITE NOTES:

- ALL WORK AND MATERIALS SHALL COMPLY WITH ALL CITY/COUNTY REGULATIONS AND CODES AND O.S.H.A. STANDARDS.
- CONTRACTOR SHALL REFER TO THE ARCHITECTURAL PLANS FOR PRECISE BUILDING DIMENSIONS AND EXACT BUILDING UTILITY ENTRANCE LOCATIONS.
- ALL RADII SHALL BE 3' INTERIOR AND 10' EXTERIOR UNLESS OTHERWISE NOTED.
- ALL PERIMETER CURBING AND LANDSCAPED ISLAND DIMENSIONS ARE TO BACK OF CURB. ALL OTHER DIMENSIONS ARE TO FACE OF CURB UNLESS OTHERWISE NOTED.
- ALL ON-SITE STRIPING SHALL BE REFLECTIVE. ALL STRIPING WITHIN THE COUNTY RIGHT OF WAY SHALL BE THERMOPLASTIC.



3277 Fruitville Road
Bldg A, Suite 2
Sarasota, Florida 34237
Phone: 941.365.4771
Fax: 941.365.4779

Engineers
Surveyors
Architects
Planners

Landscape Architects
Environmental Scientists
Construction
Management

Traffic / Transportation

Eng. C.O.A. No. 3215
Survey L.B. No. 7143
Arch. Lic. No. AA2600926
Landsc. Lic. No. LC0000298
© 2012

NATHAN J. KRAIGT, P.E.
89272

By

NJK

Revision

PHASE I CONSTRUCTION PLANS

Date

No.

SDP

File:

SITE DIMENSION PLAN

LAKEWOOD RANCH PARK
SITE IMPROVEMENTS

MANATEE COUNTY, FLORIDA

Sheet No.

C-5C

J:\M13102\DWG\Design\PHASE I\M13102 C-5A - C-5D SDP.dwg Nov 16, 2012 4:34pm dimbruno