



MANATEE COUNTY GOVERNMENT
REQUEST FOR QUOTATION #16-0105-DS
Ellenton Gillette Road Directional Drill
Automated Traffic Management System (ATMS) Conduit (Phase 1)

DATE ISSUED: October 22, 2015 DUE DATE: November 12, 2015 at 3:00 PM

Clarification of Question Deadline: November 3, 2015 at 2:00 pm

Acceptable methods of receipt:

Email Address: donna.stevens@mymanatee.org

FAX: (941) 749-3034

US MAIL to: Manatee County Purchasing Division Department
(RFQ#16-0105-DS)
1112 Manatee Avenue West, Suite 803, Bradenton FL 34205

Table of Contents

RFQ General Conditions/Manatee County Local Preference	2 - 22
Quotation Form	2 pages
Statement of No Offer..... (1 page).....	1 page
Florida Trench Act.....	1 page
Contractor's Questionnaire.....	4 pages
Public Contracting and Environmental Crimes Certification.....	2 pages
General Conditions.....	21 pages
Mailing Label	1 page
Special Provisions dated October 12, 2015.....	18 pages
100% Plans	5 pages
FDOT – ATMS Utility Permit.....	8 pages
Permit Exhibit01	1 page
Permit Exhibit01 Typical Section	1 page

Manatee County invites your participation in the following quotation. The specifications stated herein are of the minimum requirements. All quotes submitted must be in accordance with the General Terms and Conditions, and Specific Terms and Conditions.

Manatee County, a political subdivision of the State of Florida, (Hereinafter "Manatee County" or the "County") will receive quotations from individuals, corporations, partnerships, and other legal entities organized under the laws of the State of Florida or authorized to conduct business in the State of Florida.

Important Note: A prohibition of Lobbying has been enacted. Please review paragraph (page 2) carefully to avoid violation and possible sanctions.

FOR CLARIFICATION/INFORMATION CONTACT:

donna.stevens@mymanatee.org

Authorization to release Donna M Stevens

MANATEE COUNTY GOVERNMENT
REQUEST FOR QUOTATION #16-0105-DS
Ellenton Gillette Road Directional Drill
Automated Traffic Management System (ATMS) Conduit (Phase 1)

THE PURPOSE

It is the intent of Manatee County to engage a General Contractor to provide all necessary labor, material, equipment and incidentals required to perform the appropriate erosion protection, along with the Furnish and Install Conduit on the Phase 1 plans. The contractor is to install pull and splice boxes and install termination. The contractor shall stabilize the disturbed area upon completion of the work.

SPECIFICATIONS

Contractor must submit quotes strictly in accordance with the Request for Quote specifications. Each variance to these specifications must be specifically stated by the contractor on the quote form. Should the contractor not furnish the County a list of exceptions and supporting data, the county will assume the contractor is quoting in accordance with the specifications?

CLARIFICATION & ADDENDA

Each Quoter shall examine all Request for Quote documents and shall judge all matters relating to the adequacy and accuracy of such documents. Any inquiries, suggestions or requests concerning interpretation, clarification or additional information pertaining to the Request for Quote shall be made through the Manatee County Purchasing Division. The County shall not be responsible for oral interpretations given by any County employee, representative, or others. The issuance of a written addendum is the only official method whereby interpretation, clarification or additional information can be given.

COSTS INCURRED IN RESPONDING

This solicitation does not commit the County to pay any costs incurred in the submission of quotes or make necessary studies or designs for the preparation thereof, nor to procure or contract for the equipment.

LOBBYING

After the issuance of any Request for Quotation, prospective Quoters, or any agent, representative or person acting at the request of such quoter shall not contact, communicate with or discuss any matter relating in any way of the Request for Quote with any officer, agent, or employee of Manatee County other than the Purchasing Official or as directed in the Request for Quotation. This prohibition includes the act of carbon copying officers, agents or employees of Manatee County on email correspondence. This requirement begins with the issuance of any Request for Quote, and ends upon execution of the final Contract or when the quotation has been canceled. Violators of this prohibition shall be subject to sanctions as provided in the Manatee County Purchasing Code of Laws Chapter 2-26.

MANATEE COUNTY GOVERNMENT
REQUEST FOR QUOTATION #16-0105-DS
Ellenton Gillette Road Directional Drill
Automated Traffic Management System (ATMS) Conduit (Phase 1)

DISCLOSURE

Upon receipt, all inquiries and responses to inquiries related to this Request for Quotation becomes "Public Records", and shall be subject to public disclosure consistent with Chapter 119, Florida Statutes.

Quotes become "Public Records" thirty (30) days after the Quote opening or if an award decision is made earlier than this time as provided by Florida Statute 119.071.

Based on the above, Manatee County will receive quotes at the date and time stated. Upon the expiration of the statutory term for exemption the actual documents may be inspected or copied. When County staff have completed a mathematic validation and inspected the completeness of the offers, tabulation shall be posted on www.mymanatee.org.

BE GREEN

All Vendors/Bidders/Quoters/Proposers (*as applicable*) are encouraged to use as many **environmentally preferable** "green" products, materials, supplies, etc. as possible in order to promote a safe and healthy environment. **Environmentally preferable are products or services that have a reduced adverse effect on the environment.** Provide detail of your organization's initiative and its ability to meet the goal of environmental sustainability.

TAXES

Manatee County is exempt from Federal Excise and State Sales Taxes (F.E.T. Exempt Cert. No. **59-78-0089K** and FL Sales Tax Exempt Cert. (No. **85-8012622206C-6**).

MEASUREMENT

All Florida Department of Transportation (FDOT) referenced quote items shall follow the specified scope in the current edition unless otherwise specified.

QUOTE ITEM 8 – Miscellaneous Work & Clean Up

All work included under this quote item shall be for any miscellaneous work not specifically included for payment under other quote items obviously necessary to complete the Contract.

PAYMENT

All Florida Department of Transportation (FDOT) referenced quote items will be paid per the appropriate unit of measure noted in the current specifications and on the corresponding quote form.

**MANATEE COUNTY GOVERNMENT
REQUEST FOR QUOTATION #16-0105-DS
Ellenton Gillette Road Directional Drill
Automated Traffic Management System (ATMS) Conduit (Phase 1)**

QUOTE ITEM 8 – Miscellaneous Work & Clean Up

Payment for all work included under this quote item shall be made at the lump sum price listed in the quote form for any miscellaneous work not specifically included for payment under other quote items obviously necessary to complete the Contract.

MATHEMATICAL ERRORS

In the event of multiplication/extension error (s) the unit price shall prevail. In the event of additional error (s) the extension totals will prevail. All quotes shall be reviewed mathematically and corrected, if necessary, using these standards, prior to additional evaluation.

ENCLOSURE (Continued)

Public Entity Crime Affidavit (Form No. PUR: 7068) shall be submitted complete with all quotes in excess of \$ 10,000.

The Statement of No Offer (Attachment C) shall be submitted if applicable.

UNBALANCED QUOTING PROHIBITED (Applicable to unit based quotes only)

Manatee County recognizes that large and/or complex projects will often result in a variety of methods, sources and prices. However where in the opinion of the County such variation does not appear to be justified, given quote specifications and industry and market conditions, the bid will be presumed to be unbalanced. Examples of unbalanced quotes will include:

1. Quoters showing omissions, alterations of form, additions not specified or required conditional or unauthorized alternate quotes.
2. Quoters, quoting prices that substantially deviate, either higher or lower, from those included in the quotes of competitive quotes for the same line item unit costs.
3. Quotes where the unit costs offered are in excess of or below reasonable cost analysis values.

In the event the County determines that a quote is presumed unbalanced, it will request the opportunity to, and reserves the right to, review all source quotes, quotes, Price lists, letters of intent, etc., which the quoter obtained and upon which the quoter relied upon to develop the quote. The County reserves the right to reject as non-responsive any presumptive unbalanced quotes where the quoter is unable to demonstrate the validity and/or necessity of the unbalanced unit costs.

**MANATEE COUNTY GOVERNMENT
REQUEST FOR QUOTATION #16-0105-DS
Ellenton Gillette Road Directional Drill
Automated Traffic Management System (ATMS) Conduit (Phase 1)**

FRONT END LOADING OF QUOTE PRICING PROHIBITED (Applicable to unit based quotes only)

Prices offered for performance and/or acquisition activities to occur early in the project schedule, such as mobilization, clearing and grubbing; or maintenance of traffic; that are substantially higher than pricing of competitive Quoters within the same portion of the project schedule, will be presumed to be front end loaded. Front end loaded Quotes could reasonably appear to be an attempt to obtain unjustified early payments creating a risk of insufficient incentive for the Contractor to complete the Work or otherwise creating an appearance of an under-capitalized Quoter.

In the event the County determines that a quote is presumed to be front end loaded, it will request the opportunity to, and reserves the right to, review all source quotes, bids, price lists, letters of intent, etc., which the quoter obtained and upon which the quoter relied upon to develop the pricing or acquisition timing for these quote items. The County reserves the right to reject as non-responsive any presumptive front end loaded quotes where the quoter is unable to demonstrate the validity and/or necessity of the front end loaded costs.

RESERVED RIGHTS

The County reserves the right to accept or reject any and/or all quotes, to waive irregularities and technicalities and to request resubmission. Also, the County reserves the right to accept all or any part of the quote and to increase or decrease quantities to meet additional or reduced requirements of the County. Any sole response received by the first submission date may or may not be rejected by the County depending on available competition and current needs of the County. For all items combined, the quote of the lowest responsive, responsible quoter will be accepted, unless all quotes are rejected.

The lowest responsible quoter shall mean **the quoter who makes the lowest total quote to sell goods and/or services of a quality which** meets or exceeds the quality of goods and/or services set forth in the attached specifications or otherwise required by the County, and who is fit and capable to perform the quote as made.

To be responsive, a quoter shall submit a quote which conforms in all material respects to the requirements set forth in the Request for Quote. To be a responsible quoter, the quoter shall have the capability in all respects to perform fully the contract requirements, and the tenacity, perseverance, experience, integrity, reliability, capacity, facilities, equipment, and credit which will assure good faith performance. Also, the County reserves the right to make such investigation as it deems necessary to determine the ability of any quoter to furnish the service requested. Information the County deems necessary to make this determination shall be provided by the quoter. Such information may include, but shall not be limited to: current financial statements, verification of availability of equipment and personnel, and past performance records.

MANATEE COUNTY GOVERNMENT
REQUEST FOR QUOTATION #16-0105-DS
Ellenton Gillette Road Directional Drill
Automated Traffic Management System (ATMS) Conduit (Phase 1)

APPLICABLE LAWS

Quoters must be authorized to transact business in the State of Florida. All applicable laws and regulations of the State of Florida and ordinances and regulations of Manatee County will apply to any resulting Contract. Any involvement with any Manatee County procurement shall be in accordance with Manatee County Purchasing Ordinance as amended. Any actual or prospective Quoter who is aggrieved in connection with the solicitation or award of a Contract may protest to the Board of County Commissioners of Manatee County as required in Manatee County Code of Laws.

CODE OF ETHICS

With respect to this quote, if any Quoter violates, directly or indirectly, the ethics provisions of the Manatee County Purchasing Code and/or Florida criminal or civil laws related to public procurement, including but not limited to Florida Statutes Chapter 112, Part II, Code of Ethics for Public Officers and Employees, such Quoter will be disqualified from eligibility to perform the work described in this Request for Quote, and may also be disqualified from furnishing future goods or services to, and from submitting any future quotes or bids to supply goods or services to, Manatee County.

By submitting a quote, the Quoter represents to the County that all statements made and materials submitted are truthful, with no relevant facts withheld. If a Quoter is determined to have been untruthful in its quote or any related presentation, such Quoter will be disqualified from eligibility to perform the work described in this Request for Quote and may also be disqualified from furnishing future goods or services to, and from submitting any future quotes to supply goods or services to, Manatee County.

COLLUSION

By offering a submission to this Quotation, the Quoter certifies that he has not divulged, discussed or compared their quote with any other Quoter, and has not colluded with any other Quoter or parties to this quote whatsoever. Also, Quoter certifies, and in the case of a joint quote each party thereto certifies as to their own organization, that in connection with this quote:

- a. any prices and/or cost data submitted have been arrived at independently, without consultation, communication, or Contract for the purpose of restricting competition, as to any matter relating to such prices and/or cost data, with any other Quoter or with any competitor;
- b. any prices and/or cost data quoted for this quote have not been knowingly disclosed by the Quoter and will not knowingly be disclosed by the Quoter, prior to the scheduled opening, directly or indirectly to any other Quoter or to any competitor;

MANATEE COUNTY GOVERNMENT
REQUEST FOR QUOTATION #16-0105-DS
Ellenton Gillette Road Directional Drill
Automated Traffic Management System (ATMS) Conduit (Phase 1)

- c. no attempt has been made or will be made by the Quoter to induce any other person or firm to submit or not to submit a quote for the purpose of restricting competition;
- d. the only person or persons interested in this quote, principal or principals is/are named therein and that no person other than therein mentioned has any interest in this quote or in the Contract to be entered into; and
- e. no person or agency has been employed or retained to solicit or secure this Contract upon an Contract or understanding or a commission, percentage, brokerage or contingent fee accepting bona fide employees or established commercial agencies maintained by Quoter for purpose of doing business.

LEGAL NAME

Quotes shall clearly indicate the **legal name, address, telephone number and email address** of the Quoter. Quotes shall be signed as indicated on the Quote Form. The signer must have the authority to bind the Quoter to the submitted Quote.

EQUAL EMPLOYMENT OPPORTUNITY CLAUSE

In accordance with the provisions of Title VI of the Civil Rights Act of the Civil Rights Act of 1964 and Title 15, Part 8 of the Code of Federal Regulations, Manatee County hereby notifies all prospective offerors that they will affirmatively ensure minority business enterprises will be afforded full opportunity to participate in response to this advertisement and will not be discriminated against on the grounds of race, color or national origin in consideration for an Award of Contract.

BASIS OF AWARD

Award will be made to the responsive, responsible quoter having the lowest grand total price meeting the specifications (Inclusive of all necessary labor, equipment, and material to perform all services described in the Scope of Work). **Inspection of the project site is a prerequisite for award.**

In evaluating quotes, the County shall consider the qualifications of the quoter; and if required, may also consider the qualifications of the subcontractors, suppliers, and other persons and organizations proposed. County may also consider the operating costs, maintenance requirements, performance data and guarantees of major items of materials and equipment proposed for incorporation in the Work.

Whenever two (2) or more quotes are equal with respect to price, quality and service, the quote received from a local business shall be given preference in award. Whenever two (2) or more quotes which are equal with respect to price, quality and service are received and both quotes and neither of these quotes are received from a local business, the award shall be determined by a chance drawing conducted by the Purchasing Office and open to the public.

MANATEE COUNTY GOVERNMENT
REQUEST FOR QUOTATION #16-0105-DS
Ellenton Gillette Road Directional Drill
Automated Traffic Management System (ATMS) Conduit (Phase 1)

Local business is defined as a business duly licensed and authorized to engage in the sale of goods or services to be procured, which has a place of business in Manatee County with full time employees at the location.

WITHDRAWAL OF OFFERS

Contractors may withdraw offers as follows: a) Mistakes discovered before the opening of a solicitation may be withdrawn by written notice from the Quoter submitting the offer. This request must be received in the office designated for receipt of offers in the solicitation document prior to the time set for delivery and opening of the offers. A copy of the request shall be retained and the unopened offer returned to the Contractor. B) After the responses to a solicitation are opened or a selection has been determined, but before a Contract is signed, a Contractor alleging a material mistake of fact may be permitted to withdraw their offer if: (1) the mistake is clearly evident on the solicitation document; or (2) the quoter submits evidence which clearly and convincingly demonstrates that a mistake was made. Request to withdraw an offer must be in writing and approved by the Purchasing Official.

SUBCONTRACTORS

Subcontractors shall be bound by the terms and conditions of this Contract insofar as it applies to their Work, but this shall not relieve the prime Contractor from the full responsibility of the County for the proper completion of all Work to be executed under this Contract.

The employment of unauthorized aliens by any vendor is considered a violation of Section 274 (e) of the Immigration and Employment Act. If the vendor knowingly employs unauthorized aliens, such violation shall be cause for unilateral cancellation of this Contract.

QUALIFICATIONS OF THE QUOTER

The Quoter must have a minimum five (5) years' experience performing directional drilling of Automated Traffic Management System (ATMS) of traffic signal conduit and be either FDOT pre-qualified Contractor in the category of Traffic Signal or as a licensed certified General Contractor in the State of Florida. The Quoter must have successfully constructed, as prime Contractor, at least three projects of similar size which is the subject of this Request for Quotation.

Each Quoter shall submit as a portion of their quote a completed Contractor's Questionnaire included as Section 00430.

Each Quoter must be prepared to submit with five (5) days of the County's request; written evidence such as previous experience, present commitments and other such data as may be requested. Quoter must be able to provide evidence of Quoters' qualification to do business in the State of Florida.

**MANATEE COUNTY GOVERNMENT
REQUEST FOR QUOTATION #16-0105-DS
Ellenton Gillette Road Directional Drill
Automated Traffic Management System (ATMS) Conduit (Phase 1)**

A complete list of all subcontractors proposed for any portion of the Work may be requested of any Quoter deemed necessary by the County. Subcontracts shall be awarded only to those subcontractors considered satisfactory by the County.

INSPECTION OF SITE

Inspection of the sites are a requirement to be considered for award of this Contract.

Prior to submitting a Quote Form, each quoter shall examine the site and all conditions thereon fully familiarizing themselves with the full scope of the project. Failure to become familiar with site conditions will in no way relieve the successful Quoter from the necessity of furnishing any materials or performing any work that is required to complete the project in accordance with the plans and specifications.

Site visit (s) shall be acknowledged in Quote Form, page 22.

CONTRACT FORMS

The Contract resulting from the acceptance of quote shall be in the form of the Contract stated in the quotation.

ASSIGNMENT OF CONTRACT

Contractor shall not assign, transfer, convey, sublet or otherwise dispose of this Contract or of his right, title, or interest therein, or his power to execute such Contract, or to assign any monies due or to become due there under to any other person, firm or corporation unless first obtaining the written consent of the County. The giving of such consent to a particular subcontractor assignment shall not dispense with the necessity of such consent to any further or other assignment.

COMPLETION OF WORK

The Work will be completed and ready for final inspection within the specified calendar days from the date the Contract Time commences to run. Ellenton Gillette Road Directional Drill Automated Traffic Management System (ATMS) Conduit (Phase 1) is based on **a 120 day calendar day completion**. The quote commencement date is based upon the issuance of the Notice to Proceed. The Contractor shall give **72 hour notification** to the Project Manager, Public Works Department, Mr. Michael Sturm at (941) 708-7450 ext. 7332 prior to commencement of work.

LIQUIDATED DAMAGES

If the Contractor refuses or fails to prosecute the Work, or any separable part thereof, with such diligence as will hinder its completion within the time specified, the County may seek damages. The actual damages for delay will be impossible to determine and in lieu thereof, the Contractor shall pay to the County the sum of **Eight Hundred Eight Four Dollars (\$884.00)** as fixed, agreed, and liquidated damages for each calendar day of the delay until the Work is finally accepted by the County and the Contractor and his Surety shall be liable for the amount thereof for each awarded site.

**MANATEE COUNTY GOVERNMENT
REQUEST FOR QUOTATION #16-0105-DS
Ellenton Gillette Road Directional Drill
Automated Traffic Management System (ATMS) Conduit (Phase 1)**

PAYMENT

Upon receipt of a complete invoice after services have been rendered or materials have been delivered and accepted, the County shall pay the total amount due in accordance with Florida Statute 218.70, Prompt Payment Act.

If appropriate, successful quoter(s) may apply for partial payment on monthly estimates, based on the amount of work completed and accepted.

RETAINAGE

A retainage of 10% of the total work in place shall be withheld until 50% complete. After 50% completion, the retainage shall be reduced to 5% of the total work in place until final completion and acceptance of the work by the County. Upon final acceptance, the remaining retainage shall be included in the final payment.

PERFORMANCE AND PAYMENT BONDS (If Contract exceeds \$100,000)

The successful Quoter shall furnish surety bonds using the form prescribed in F.S. 255.05, which is provided herein, as security for faithful performance of the Contract awarded as a result of this quote and for the payment of all persons performing labor and/or furnishing material in connection therewith. Failure to provide the required bonds on the prescribed form may result in successful Quoter being deemed nonresponsive. Bonds must be in the form prescribed in F.S. § 255.05, and must not contain notice, demand or other terms and conditions, including informal pre-claim meetings, not provided for in F.S. § 255.05.

Surety of such bonds shall be in an amount equal to the quote award (100% each) issued by a duly authorized and nationally recognized surety company, authorized to do business in the State of Florida, satisfactory to this County. The attorney-in-fact who signs the bonds must file with the bonds, a certificate and effective dated copy of power-of-attorney. Performance and Payment bonds shall be issued to Manatee County, a political subdivision of the State of Florida, within fourteen (14) calendar days after notification of intent to award

In addition, pursuant to F.S. § 255.05(1) (b), prior to commencing work, the Contractor shall be responsible and bear all costs associated to record the Performance and Payment bond with the Manatee County Clerk of the Circuit Court. A certified copy of said recording shall be furnished to the Purchasing Division upon filing. Pursuant to F.S. § 255.05(1) (b), the County will make no payment to the Contractor until the Contractor has complied with this paragraph.

**MANATEE COUNTY GOVERNMENT
REQUEST FOR QUOTATION #16-0105-DS
Ellenton Gillette Road Directional Drill
Automated Traffic Management System (ATMS) Conduit (Phase 1)**

Furnishing of the recorded Performance and Payment bonds shall be requisite to execution of a Contract with the County. Said Performance and Payment bonds will remain in force for the duration of the Contract with the premiums paid by the Contractor. Failure of the successful Quoter to execute such Contract and to supply the required bonds shall be just cause for cancellation of the award. The County may then contract with another acceptable Quoter or re-advertise this Quotation. If another Quoter is accepted, and notice given within ninety (90) days after the opening of quotes, this acceptance shall bind the Quoter as though they were originally the successful Quoter.

PERFORMANCE AND PAYMENT BONDS (If Contract exceeds \$100,000) (Continued)

Failure of the County at any time to require performance by the Contractor of any provisions set out in the Contract will in no way affect the right of the County, thereafter, to enforce those provisions.

WARRANTY AND GUARANTEE PROVISIONS

All work, materials, and equipment furnished as defined herein shall be guaranteed and warranted by the Contractor for a minimum period of three (3) years, unless otherwise specified, from final acceptance by the County to be free from defects due either to faulty materials or equipment or faulty workmanship.

All materials, equipment, and workmanship furnished and installed by the Contractor is warranted and guaranteed by the Contractor to be such as to meet the required standards and to accomplish the purposes and functions required standards and to accomplish the purposes and functions of the project as defined, detailed, and specified herein

The County shall, following discovery thereof, promptly give written notice to the Contractor of faulty materials, equipment, or workmanship within the period of the guarantee and the Contractor shall promptly replace any part of the faulty equipment, material, or workmanship at his own cost. These warranty and guarantee provisions create no limitations on the County as to any claims or actions for breach of guaranty or breach of warranty that the County might have against parties other than the Contractor, and do not constitute exclusive remedies of the County against the Contractor.

ROYALTIES AND PATENTS (IF APPLICABLE)

The Contractor shall pay all royalties and license fees for equipment or processes in conjunction with the equipment and/or services being furnished. Contractor shall defend all suits or claims for infringement of any patent trademark or copyright, and shall save the County harmless from loss on account thereof, including costs and attorney's fees.

**MANATEE COUNTY GOVERNMENT
REQUEST FOR QUOTATION #16-0105-DS
Ellenton Gillette Road Directional Drill
Automated Traffic Management System (ATMS) Conduit (Phase 1)**

AUTHORIZED PRODUCT REPRESENTATION (IF APPLICABLE)

The Contractor, by virtue of submitting the name and specifications of a manufacturer's product, will be required to furnish the named manufacturer's product. Failure to perform accordingly may, in the County's sole discretion, be deemed a breach of Contract, and shall constitute grounds for the County's immediate termination of the Contract.

REGULATIONS

It shall be the responsibility of the Quoter to assure compliance with any federal or state of Florida rules, regulations or other requirements as each may apply.

CANCELLATION

Any failure of the contractor to furnish or perform the Work (including, but not limited to, commencement of the Work, failure to supply sufficient skilled workers or suitable materials or equipment) in accordance with the contract, the County may order the stop of the Work, or any portion thereof, until the cause for such order has been eliminated. If the contractor persistently fails to perform the Work in accordance with the contract, the County reserves the right to terminate the contract and select the next qualified

Quoter or re-advertise this procurement in part or in whole. The County reserves the right to cancel all or any undelivered or unexecuted portion of this contract with or without cause.

INDEMNIFICATION

The Contractor covenants and agrees to indemnify and save harmless the County, its agents and employees, from and against all claims, suits, actions, damages, causes of action, or judgments arising out of the terms of the resulting Contract or any personal injury, loss of life, or damage to the property sustained as a result of the performance or non-performance of services or delivery of goods; from and against any orders, judgments, or decrees, which may be entered against the County, its agents or employees; and from and against all costs, attorney's fees, expenses and other liabilities incurred in the defense of any such claim, suit or action, and the investigation thereof. Nothing in the award, resulting Contract, Contract or Purchase Order shall be deemed to affect the rights, privileges and immunities of the County as set forth in Florida Statute Section 768.28.

MANUALS, SCHEMATICS, HANDBOOKS (IF APPLICABLE)

All manuals, schematics and handbooks shall be provided which are applicable to the equipment delivered. An operators manual, parts manual and technician manual must also be provided. Parts lists (manuals) must include OEM part numbers for items not manufactured by the Quoter. Contractor shall furnish two (2) copies of each.

**MANATEE COUNTY GOVERNMENT
REQUEST FOR QUOTATION #16-0105-DS**

**Ellenton Gillette Road Directional Drill
Automated Traffic Management System (ATMS) Conduit (Phase 1)**

CONTRACT CONTINGENCY WORK

This Quote Item entails a monetary allowance which is used at County's discretion to handle unexpected conditions as required to satisfactorily complete the Project in accordance with the plans and Specifications. A Field Directive must be issued by an authorized County Representative to authorize use of Contract Contingency funds.

The percentage for Contract Contingency is listed on the Quote Form. Contractor shall enter the amount for Contract Contingency based on the percentage of their Total Base Quote.

The total Contract Award will include the Contract Contingency funds.

Appropriate uses of Contract Contingency funds include increases to existing Quote item quantities that do not change the initial Scope of Work, which may be directed by staff, modified items not originally quoted which were unforeseen yet necessary during the construction to provide a safe, complete Project and that do not change the initial Scope of Work, and unanticipated conflicts and/or design changes required during construction which are necessary to provide a safe, complete Project and that do not change the initial Scope of Work.

Inappropriate uses of Contract Contingency funds include anything that changes the initial Scope of Work, including the Contract Price and Contract Time, and adding Quote items not previously contemplated that change the initial Scope of Work.

SCHEDULE OF VALUES

Unit Prices shall be established for these contracts by the submission of a schedule of values. The Contractor shall submit a Schedule of Values within **ten days** of Notice to Proceed date. The Schedule shall include quantities and prices of items equaling the total Price and will subdivide the Work into component parts in sufficient detail to serve as a basis for process payments during construction. Such prices will include an appropriate amount of overhead and profit applicable to each item of work. Upon request of the County, the Contractor shall support the values with data which will substantiate their correctness.

NO DAMAGES FOR DELAY

No claim for damages or any claim other than for an extension of time shall be made or asserted against the County by reason of any delays. The Contractor shall not be entitled to an increase in the Total Contract Price or payment or compensation of any kind from the County or direct, indirect, consequential impact or other costs, expenses for damages, including but not limited to costs of acceleration or inefficiency arising because of delay, disruption, interference or hindrance from any cause whatsoever; provided; however, that this provision shall not preclude recovery or damages by the Contractor for hindrance or delays due solely to fraud, bad faith, or active interference on part of the County or its agents.

**MANATEE COUNTY GOVERNMENT
REQUEST FOR QUOTATION #16-0105-DS
Ellenton Gillette Road Directional Drill
Automated Traffic Management System (ATMS) Conduit (Phase 1)**

NO DAMAGES FOR DELAY (Continued)

Otherwise, the Contractor shall only be entitled to extensions of the Contract Time as the sole and exclusive remedy for such resulting delay, in accordance with and to the extent specifically provided above.

NO INTEREST

Any monies not paid by the County when claimed to be due to the Contractor under this Contract shall not be subject to interest including prejudgment interest. Any monies not paid by the County when claimed to be due to the Contractor for damages awarded in the case of construction delays shall not be subject to prejudgment interest.

INSURANCE

The Contractor will not commence work under a Contract until all insurance under this section and such insurance coverage as might be required by the County has been obtained. The Contractor shall obtain, and submit to the Purchasing Division within ten (10) calendar days of request, at his expense, the following minimum amounts of insurance (inclusive of any amounts provided by an umbrella or excess policy):

- a. Workers' Compensation/Employers' Liability
Part One - There shall be no maximum limit (other than as limited by the applicable statute) for liability imposed by Florida Workers' Compensation Act or any other coverage required by the Contract

- a. Workers' Compensation/Employers' Liability
documents which are customarily insured under Part One of the standard Workers' Compensation Policy.

Part Two - The minimum amount of coverage required by the Contract documents which are customarily insured under Part Two of the standard Workers' Compensation Policy shall be:

<u>\$1,000,000.</u>	(Each Accident)
<u>\$ 500,000</u>	(Disease-Policy Limit)
<u>\$ 100,000</u>	(Disease-Each Employee)

- b. Commercial General Liability
The limits are to be applicable only to work performed under this Contract and shall be those that would be provided with the attachment of the Amendment of Limits of Insurance (Designated Project or Premises) endorsement (ISO Form CG 25 03) a Commercial General Liability Policy with the following minimum limits.

MANATEE COUNTY GOVERNMENT
REQUEST FOR QUOTATION #16-0105-DS
Ellenton Gillette Road Directional Drill
Automated Traffic Management System (ATMS) Conduit (Phase 1)

INSURANCE (Continued)

General Aggregate:

Products/Completed Operations Aggregate	<u>\$1,000,000</u>
Personal and Advertising Injury	<u>\$1,000,000</u>
Each Occurrence	<u>\$1,000,000</u>
Fire Damage (Any One Fire)	<u>\$Nil</u>
Medical Expense (Any One Person)	<u>\$Nil</u>

c. Business Auto Policy

Each Occurrence Bodily Injury and Property Damage Liability Combined	<u>\$1,000,000</u>
Annual Aggregate (if applicable):	<u>\$1,000,000</u>

d. Property Insurance

If this Contract includes construction of or additions to above ground buildings or structures, Contractor shall provide "**Builder's Risk**" insurance with the minimum amount of insurance to be 100% of the value of such addition(s), building(s), or structure(s).

e. Installation Floater

If this Contract does not include construction of or additions to above ground building or structures, **but does involve** the installation of machinery or equipment, Contractor shall provide an "**Installation Floater**" with the minimum amount of insurance to be 100% of the value of such addition(s), building(s), or structure(s).

f. Certificates of Insurance and Copies of Policies

Certificates of Insurance in triplicate evidencing the insurance coverage specified herein shall be filed with the Purchasing Official before operations are begun. The required certificates of insurance shall name the types of policy, policy number, date of expiration, amount of coverage, companies affording coverage, and also shall refer specifically to the Quote number and title of the project. All insurance policies required herein shall be issued by companies that are authorized to do business under the laws of the State of Florida and hold an A.M. Best rating of A- or better. Insurance, as specified herein, shall remain in force and effect for the duration of the project including any warranty periods.

h. **Complete Policies:** The entire and complete insurance policies required herein shall be provided to the County on request.

**MANATEE COUNTY GOVERNMENT
REQUEST FOR QUOTATION #16-0105-DS
Ellenton Gillette Road Directional Drill
Automated Traffic Management System (ATMS) Conduit (Phase 1)**

INSURANCE (Continued)

h. If the initial insurance expires prior to the completion of operations and/or services by the Contractor, renewal certificates of insurance and required copies of policies shall be furnished by the Contractor and delivered to the Purchasing Official thirty (30) days prior to the date of their expiration. Nothing herein shall in any manner create any liability of the County in connection with any claim against the Contractor for labor, services, or materials, or of Subcontractors; and nothing herein shall limit the liability of the Contractor or Contractor's sureties to the County or to any workers, suppliers, material men or employees in relation to this Contract.

I. Certification Requirements – In order for the certificate of insurance to be accepted it must comply with the following:

1. The certificate holder shall be:
**Manatee County, a political subdivision of the State of Florida
P.O. Box 1000
Bradenton, FL 34206-1000**
2. Certificate shall be mailed to:
**Manatee County Purchasing Division
1112 Manatee Avenue West, 8th Floor
Suite 803
Bradenton, FL 34205
Attn: Donna M. Stevens, Contract Specialist**

By way of its submission of a Quote hereto, Quoter

1. Represents that Quoter maintains, and will maintain during the term of any Contract arising from this solicitation, insurance coverage from responsible companies duly authorized to do business in the State of Florida, as set forth in this solicitation;
2. Agrees that, upon County's request, appropriate evidence of the insurance requirements set forth in this solicitation will be produced by Quoter within ten (10) calendar days from the date of notice of Intent to Award; and
3. Agrees that, insurance should not be cancelled without thirty (30) days' notice to County and must be endorsed to provide same. Failure of Quoter to obtain and maintain proper amounts of insurance as called for herein shall constitute a material breach of the resulting Contract by successful Quoter.

MANATEE COUNTY GOVERNMENT
REQUEST FOR QUOTATION #16-0105-DS
Ellenton Gillette Road Directional Drill
Automated Traffic Management System (ATMS) Conduit (Phase 1)

CONSTRUCTION OF CONTRACT

This Contract and the rights and responsibilities hereunder shall not be construed more strongly against either party, regardless of the extent to which such party may have participated in the preparation hereof.

SCOPE OF WORK

It is the intent of Manatee County to engage a General Contractor to provide all necessary labor, material, equipment and incidentals required to perform the appropriate erosion protection along with furnishing and installing conduit as shown on the supplied plans. The contractor shall install pull and splice boxes and install termination. The contractor shall stabilize the disturbed area upon completion of the work.

Coordination of project shall be conducted by contractor with FDOT and Manatee County.

Exception: In the event of an emergency, no work shall be done between the hours of 7:00 PM and 7:00 AM., or on weekends. If the proper and efficient prosecution of the work requires operations during the night or weekends, the written permission of the County shall be obtained before starting such items of the work.

When applicable, it shall be the Contractor's responsibility to obtain and/or verify existence of all necessary permits prior to commencing construction. The Contractor shall be responsible for obtaining any permits not furnished by County and the costs should be reflected in the Contractor's quote.

Where applicable, the information provided in the Construction Plans and the Contract Documents and Technical Specifications is solely to assist the Contractor in assessing the nature and extent of the conditions that may be encountered during the completion of the work. Prior to quoting, all Contractors are directed to conduct any necessary Investigations to arrive at their own conclusions regarding the actual conditions that may be encountered and shall base their quotes on those conclusions.

The Contractor shall furnish all surveying, working drawings, labor, materials, equipment, tools, services and incidentals necessary to complete all work required by these Specifications and as shown on the Contract Drawings.

Where applicable, the work consists of all items as indicated on the Construction Plans plus those items of construction not indicated but considered normal, necessary, and usual in the construction industry for construction of a project of this scope.

The Contractor shall perform the work complete, in place and ready for continuous service and shall include any repairs, replacements, and/or restoration required as a result of damages caused prior to acceptance by the County.

**MANATEE COUNTY GOVERNMENT
REQUEST FOR QUOTATION #16-0105-DS
Ellenton Gillette Road Directional Drill
Automated Traffic Management System (ATMS) Conduit (Phase 1)**

SCOPE OF WORK (continued)

The Contractor shall furnish and install all materials, equipment and labor which is reasonably and properly inferable and necessary for the proper completion of the work, whether specifically indicated in the Contract Documents or not.

EXAMINATION OF CONTRACT DOCUMENTS AND SITE

It is the responsibility of each Quoter before submitting a Quote, to (a) examine the Quote Documents thoroughly; (b) visit the site to become familiar with local conditions that may affect cost, progress, performance, or furnishing of the Work; (c) consider federal, state, and local codes, laws, and regulations that may affect costs, progress, performance, or furnishing of the Work; (d) study and carefully correlate Quoters' observations with the Quote Documents; and (e) notify County of all conflicts, errors, or discrepancies in the Quote Document.

When applicable to a solicitation the accuracy of the existing utility locations shown on the plans is approximate and without express or implied warranty. Each Quoter may, at Quoters' own expense, make or obtain any additional examinations, investigations, explorations, tests and studies, and obtain any additional information and data which pertain to the physical conditions at or contiguous to the site or otherwise which may affect cost, progress, performance or furnishing of the Work and which Quoter deems necessary to determine his Quote for performing and furnishing the Work in accordance with the time, price and other terms and conditions of the Contract Documents. County will provide each Quoter access to the site to conduct such explorations and tests.

When applicable to a solicitation, the Quoter shall fill all holes, clean up and restore the site to its former condition upon completion of such explorations. The lands upon which the Work is to be performed, rights-of-way and easements for access thereto, and other lands designated for use by Contractor in performing the Work are identified in the Contract Documents.

All additional lands and access thereto required for temporary construction facilities or storage of materials and equipment are to be provided by Contractor. Easements for permanent structures or permanent changes in existing structures are to be obtained and paid for by County unless otherwise provided in the Contract Documents.

End of Section

MANATEE COUNTY LOCAL PREFERENCE LAW AND VENDOR REGISTRATION**Vendor Registration**

All vendors are encouraged to register with Manatee County using the on-line "Vendor Registration" web page on www.mymanatee.org.

Enclosed are a copy of the current Manatee County law that details the County's Local Preference and the County's definition of a Local Business.

If you assert that your firm meets the stated definition of a Local Business, we ask that in addition to registering on the County's Web page, you fill out the attached "**Affidavit As To Local Business Form**" that is included in this section, have the completed document notarized, and mail the original to the following address: Manatee County Administration Center, 1112 Manatee Avenue West, Suite 803, Bradenton, FL 34205.

Your cooperation in registering your business with Manatee County will enhance our opportunities to identify sources for goods and services, plus identify Local Businesses. This information is used for soliciting quotations up to \$250,000.00 and for competitive solicitations of larger purchases.

You will note that Manatee County collaborates with the Manatee Chamber of Commerce, posting quotes on www.manatee-chamber.com as well as using the same vendor categories for registration.

Our staff can assist you with your registration as needed. Our office hours are 8:00 A.M. to 5:00 P.M., Monday through Friday on regular business days. Please call (941) 749-3014 if you wish to have a purchasing staff member assist you.

Quick steps to registration: **www.mymanatee.org**

A link to "Purchasing" is listed under "Quick Links" on page one of the County Web Site.

On the left hand side of the Purchasing Web page, click on "Vendor Registration".

This will bring up the Vendor Registration form for on-line input. Please note that the definition of a "Local Business" changed on March 17, 2009. The Web page will be updated to include the current Law which has been provided in this section of the quote.

Thank you for reviewing this information and considering registering your business with Manatee County. Registration is not mandatory; however, by taking the time to register, you are helping the County to provide timely notifications of quotation, bid and proposal opportunities to your business.

Section 2-26-6. Local preference, tie bids (quotes), local business defined.

(a) Whenever a responsible local business Quoter and a responsible non-local business Quoter are found, upon the opening of bids (quotes), to have both submitted the lowest responsive bid (quotes), the bid (quote) of the local Quoter shall be awarded the contract. Should more than one responsible local business Quoter match the responsible non-local business Quoter's lowest responsive bid (quote), or should no responsible local business Quoter match the lowest responsive bid (quote) but two or more responsible non-local business Quoters submit lowest responsive bids (quotes) for equal amounts, then the award of the contract shall be determined by a chance drawing, coin toss, or similar tie-breaking method conducted by the purchasing office and open to the public. Any Quoters seeking to be recognized as local businesses for purposes of this local business preference provision may be required by the terms of the bid (quote) announcement to certify they meet the definition of local business set forth in this section, and to register as a local business with the County in the manner prescribed by the County to facilitate the County's ability to track the award of contracts to local businesses and to allow the County to provide future notifications to its local businesses concerning other bidding (quoting) opportunities.

(b) Nothing herein shall be deemed to prohibit the inclusion of requirements with respect to operating and maintaining a local place of business in any invitation for bids (Request for Quote) when the Quoter's location materially affects the provisions of the services or supplies that are required by the invitation.

(c) Local business is defined as a business legally authorized to engage in the sale of the goods and/or services to be procured, and which certifies within its bid (quote) that for at least six (6) months prior to the announcement of the solicitation of bids (quotes) it has maintained a physical place of business in Manatee, Desoto, Hardee, Hillsborough, Pinellas or Sarasota County with at least one full-time employees at that location.

(d) Each solicitation for bids (quotes) made by the County shall contain terms expressly describing the local business preference policies of the County, and shall provide that by electing to submit a bid (quote) pursuant to a request for bids (quotes), all Quoters are deemed to understand and agree to those policies.

(e) For all contracts for architecture, professional engineering, or other professional services governed by Florida Statute § 287.055, the Consultants' Competitive Negotiation Act, the County shall include the local business status of a firm among the factors considered when selecting which firms are "most highly qualified." In determining which firm is the "most qualified" for purposes of negotiating a satisfactory contract, preference shall be given to a local business where all other relevant factors are equal.

(f) Local preference shall not apply to the following categories of contracts:

1. Goods or services provided under a cooperative purchasing agreement or similar "piggyback" contract;
2. Contracts for professional services subject to Florida Statute § 287.055, the Consultants' Competitive Negotiation Act, except as provided for in subsection (e) above;

**MANATEE COUNTY GOVERNMENT
AFFIDAVIT AS TO LOCAL BUSINESS
(Complete and Initial Items B-F)**

A. Authorized Representative

I, [name] _____, am the [title] _____
and the duly authorized representative of: [name of business] _____
_____, and that I possess direct personal knowledge to make informed responses to these
certifications and the legal authority to make this Affidavit on behalf of myself and the business for which I
am acting; and by electing to submit a bid pursuant to this Invitation for Bids, shall be deemed to understand
and agree to the local business preference policies of Manatee County; and that I have the direct knowledge
to state that this firm complies with all of the following conditions to be considered to be a Local Business as
required by the Manatee County Code of Laws, Section 2-26-6.

B. Place of Business: I certify that the above business is legally authorized to engage in the sale of goods
and/or services and has a physical place of business in Manatee, DeSoto, Hardee, Hillsborough, Pinellas or
Sarasota County with at least one (1) fulltime employee at that location. The physical address of the location
which meets the above criteria is: _____ [Initial] _____

C. Business History: I certify that business operations began at the above physical address with at least
one fulltime employee on [date] _____ [Initial] _____

D. Criminal Violations: I certify that within the past five years of the date of this Bid announcement, this
business has not admitted guilt nor been found guilty by any court or local, state or federal regulatory
enforcement agency of violation of any criminal law or administrative regulation regarding fraud. [Initial] _____

E. Citations or Code Violations: I certify that this business is not currently subject to any unresolved
citation or notice of violation of any Manatee County Code provision, with the exception of citations or notices
which are the subject of a legal current appeal within the date of this bid announcement. [Initial] _____

F. Fees and Taxes: I certify that within this business is not delinquent in the payment of fines, liens,
assessments, fees or taxes to any governmental unit or taxing authority within Manatee County, with the
exception of those which are the subject of a legal current appeal. [Initial] _____

*Each of the above certifications is required to meet the qualification of "Local Business" under Manatee
County Code of Laws, 2-26-6.*

Signature of Affiant _____

STATE OF FLORIDA

COUNTY OF _____

Sworn to (or affirmed) and subscribed before me this _____ day of _____, 2015, by (name of person making statement).

(Notary Seal) Signature of Notary: _____

Name of Notary (Typed or Printed) _____

Personally Known _____ OR Produced Identification _____ Type of Identification Produced _____

**Submit executed copy to Manatee County Purchasing Division, Suite 803, 1112 Manatee Avenue W.,
Bradenton, FL 34205.**

Page 22

QUOTE FORM

RFQ#16-0105-DS

PROJECT NAME: Ellenton Gillette Road Directional Drill, Automated Traffic Management System (ATMS) Conduit (Phase I)

PROJECT NUMBER: 6084560

PAY	FDOT			EST.	UNIT	EXTENDED
ITEM	ITEM	DESCRIPTION	U/M	QTY	PRICE	PRICE
	NO.				(\$)	(\$)
1	101-1	MOBILIZATION	LS	1		\$
2	102-1	MAINTENANCE OF TRAFFIC	LS	1		\$
3	104-10-3	SEDIMENT BARRIER	LF	100	\$	\$
4	570-1-2	PERFORMANCE TURF, SOD	SY	100	\$	\$
5	630-2-12	CONDUIT, F&I, DIRECTIONAL BORE	LF	555	\$	\$
6	633-2-32	FIBER OPTIC CONNECTION, INSTALL, TERMINATION	EA	2	\$	\$
7		Sub-Total Construction Cost				\$
8		Miscellaneous Work & Clean Up				\$
9		Contract Contingency Work (Used only with County Approval)		10% OF TOTAL BASE QUOTE		\$
		TOTAL QUOTE AWARD FOR ELLENTON GILLETTE ROAD DIRECTIONAL DRILL (ATMS) CONDUIT (PHASE 1)				\$

QUOTER:

AUTHORIZED SIGNATURE:

STATEMENT OF NO OFFER

If you do not intend to quote please return this form immediately:

Acceptable methods of return:

EMAIL-----see front of Request for Quote.

FAX----- (941) 749-3034

MAIL TO:

**Manatee County Purchasing Division
Attention: Donna M. Stevens
1112 Manatee Avenue West, Suite 803
Bradenton, FL 34205**

We, the undersigned, have declined to quote on **RFQ#16-0105-DS**, for the following reason(s):

- ☐ Specifications too restrictive
- ☐ Insufficient time to respond
- ☐ We do not offer this product or service
- ☐ Our schedule would not permit us to perform
- ☐ Unable to meet specifications
- ☐ Specifications unclear (explain below)
- ☐ Other (specify below)

REMARKS PLEASE PRINT

Company Name _____

Company Address _____

Telephone: _____

Date: _____

Signature: _____

(Print or type name and title of above signer)

**SWORN STATEMENT
THE FLORIDA TRENCH SAFETY ACT**

THIS FORM MUST BE SIGNED IN THE PRESENCE OF A NOTARY PUBLIC OR BY AN OFFICER AUTHORIZED TO ADMINISTER OATHS.

1. This Sworn Statement is submitted with IFB No. #16-0105-DS
2. This Sworn Statement is submitted by _____
whose business address is _____
and, if applicable, its Federal Employer Identification Number (FEIN) is _____.
If the entity has no FEIN, include the Social Security Number of the individual signing this sworn statement _____.
3. Name of individual signing this Sworn Statement is: _____,
Whose relationship to the above entity is: _____?
4. The Trench Safety Standards that will be in effect during the construction of this project shall include, but are not limited to: Laws of Florida, Chapters 90-96, TRENCH SAFETY ACT, and OSHA RULES AND REGULATIONS 29 CFR 3098.650 Subpart P, effective October 1, 1990.
5. The undersigned assures that the entity will comply with the applicable Trench Safety Standards and agrees to indemnify and hold harmless the County and Engineer, and any of their agents or employees from any claims arising from the failure to comply with said standard.
6. The undersigned has appropriated the following costs for compliance with the applicable standards:

Trench Safety Measure (Description)	Units of Measure (LF, SY)	Unit Quantity	Unit Cost	Extended Cost
a. _____	_____	_____	\$ _____	_____
b. _____	_____	_____	\$ _____	_____
c. _____	_____	_____	\$ _____	_____
d. _____	_____	_____	\$ _____	_____

7. The undersigned intends to comply with these standards by instituting the following procedures:

THE UNDERSIGNED, in submitting this Quote, represents that they have reviewed and considered all available geotechnical information and made such other investigations and tests as they may deem necessary to adequately design the trench safety system(s) to be utilized on this project.

(AUTHORIZED SIGNATURE / TITLE)

SWORN to and subscribed before me this _____ day of _____, 2015.

(Impress official seal)

Notary Public, State of Florida: _____

My commission expires: _____

CONTRACTOR'S QUESTIONNAIRE

(Must submit with Quote Form)

The Quoter warrants the truth and accuracy of all statements and answers herein contained. (Include additional sheets if necessary.)

THIS QUESTIONNAIRE MUST BE COMPLETED AND SUBMITTED WITH YOUR QUOTE.

1. LICENSE #: _____
 License Issued to _____
 DATE LICENSE RECEIVED: MM/DD/YR _____
 COMPANY'S NAME: _____

 CO. PHYSICAL ADDRESS _____

 CITY _____
 _____ STATE of INCORPORATION, (IF APPLICABLE) _____ (ZIP CODE) _____
 (_____) _____ TELEPHONE NUMBER: (_____) _____ FAX _____
 EMAIL ADDRESS: _____
2. Quoting as an individual ___ a partnership: ___ a corporation; ___ a joint venture ___
 3. If a partnership: list names and addresses of partners; if a corporation: list names of officers, directors, shareholders, and state of incorporation; if joint venture: list names and address of ventures' and the same if any venture are a corporation for each such corporation, partnership, or joint venture:

4. Your organization has been in business (under this firm's name) as a _____

 For how many years? _____ is this firm in bankruptcy? _____

_____ Years' experience performing this type of project. (Must have 5 years' experience and have been the prime Contractor for three projects.)

(Attach a list of projects)

Quoter: _____

SECTION 00430
CONTRACTOR'S QUESTIONNAIRE
(Submit in Triplicate)

4. (Continued)
Has license ever been suspended, revoked, removed or under investigation?

5. Describe and give the date and County of the last three government or private work of similar scope you've completed which are similar in cost, type, size, and nature as the one proposed (for a public entity), include contact name and phone number. Provide the Budget, Actual Cost, Size and Summary of Work for each project. "Attach additional pages as necessary". **(Note: If listing a Manatee County reference they should not be directly associated with this project)**
1.) _____
2.) _____
3.) _____
6. Have you ever been assessed liquidated damages under a Contract during the past five (5) years? If so, state when, where (contact name, address, and phone number) and why.

7. Have you ever failed to complete work awarded to you? Or provide projects not completed within Contract time. If so, state when, where (Contact name, address, phone number) and why?

8. Have you ever been debarred or prohibited from quoting on a governmental entity's construction project? If yes, name the entity and describe the circumstances:

Quoter: _____

SECTION 00430
CONTRACTOR'S QUESTIONNAIRE
(Submit in Triplicate)

9. What specific steps have you taken to examine the physical conditions at or contiguous to the site, including but not limited to, the location of existing underground facilities?

Have you visited the site (s)? _____

Provide date/ (s) of site visit: _____

10. (If applicable, what specific physical conditions, including, but not limited to, the location of existing underground facilities have you found which will, in any manner, affect cost, progress, performance, or finishing of the work?

11. Will you subcontract any part of this Work? If so, describe which major portion(s):

12. If any, list (with Contract amount) WBE/MBE to be utilized:

13. What equipment do you own to accomplish this Work? (A listing may be attached)

Quoter: _____

SECTION 00430
CONTRACTOR'S QUESTIONNAIRE
(Submit in Triplicate)

14. What equipment will you purchase/rent for the Work? (Specify which)

QUOTER: _____

PUBLIC CONTRACTING AND ENVIRONMENTAL CRIMES CERTIFICATION
SWORN STATEMENT PURSUANT TO ARTICLE V,
MANATEE COUNTY PURCHASING CODE

THIS FORM MUST BE SIGNED AND SWORN TO IN THE PRESENCE OF A NOTARY PUBLIC OR OTHER OFFICIAL AUTHORIZED TO ADMINISTER OATHS.

This sworn statement is submitted to the Manatee County Board of County Commissioners by

 [Print individual's name and title]

For _____ [print name of entity submitting sworn statement]

whose business address is: _____

and (if applicable) its Federal Employer Identification Number (FEIN) is _____. If the entity has no FEIN, include the Social Security Number of the individual signing this sworn statement:

I understand that no person or entity shall be awarded or receive a county contract for public improvements, procurement of goods or services (including professional services) or a county lease, franchise, concession or management agreement, or shall receive a grant of county monies unless such person or entity has submitted a written certification to the County that it has not:

- (1) been convicted of bribery or attempting to bribe a public officer or employee of Manatee County, the State of Florida, or any other public entity, including, but not limited to the Government of the United States, any state, or any local government authority in the United States, in that officer's or employee's official capacity; or
- (2) been convicted of an agreement or collusion among Quoters or prospective Quoters in restraint of freedom of competition, by agreement to bid a fixed price, or otherwise; or
- (3) been convicted of a violation of an environmental law that, in the sole opinion of the County's Purchasing Official, reflects negatively upon the ability of the person or entity to conduct business in a responsible manner; or
- (4) made an admission of guilt of such conduct described in items (1), (2) or (3) above, which is a matter of record, but has not been prosecuted for such conduct, or has made an admission of guilt of such conduct, which is a matter of record, pursuant to formal prosecution. An admission of guilt shall be construed to include a plea of nolo contendere; or
- (5) where an officer, official, agent or employee of a business entity has been convicted of or has admitted guilt to any of the crimes set forth above on behalf of such an entity and pursuant to the direction or authorization of an official thereof (including the person committing the offense, if he is an official of the business entity), the business shall be chargeable with the conduct herein above set forth. A business entity shall be chargeable with the conduct of an affiliated entity, whether wholly owned, partially owned, or one which has common ownership or a common Board of Directors. For purposes of this Form, business entities are affiliated if, directly or indirectly, one business entity controls or has the power to control another business entity, or if an individual or group of individuals controls or has the power to control both entities. Indicia of control shall include, without limitation, interlocking management or ownership, identity of interests among family members, shared organization of a business entity following the ineligibility of a business entity under this Article, or using substantially the same management, ownership or principles as the ineligible entity.

(Cont'd.)

Any person or entity who claims that this Article is inapplicable to him/her/it because a conviction or judgment has been reversed by a court of competent jurisdiction shall prove the same with documentation satisfactory to the County's Purchasing Official. Upon presentation of such satisfactory proof, the person or entity shall be allowed to contract with the County.

I UNDERSTAND THAT THE SUBMISSION OF THIS FORM TO THE CONTRACTING OFFICER FOR MANATEE COUNTY IS VALID THROUGH DECEMBER 31 OF THE CALENDAR YEAR IN WHICH IT IS FILED. I ALSO UNDERSTAND THAT ANY CONTRACT OR BUSINESS TRANSACTION SHALL PROVIDE FOR SUSPENSION OF PAYMENTS, OR TERMINATION, OR BOTH, IF THE CONTRACTING OFFICER OR THE COUNTY ADMINISTRATOR DETERMINES THAT **SUCH PERSON OR ENTITY HAS MADE FALSE CERTIFICATION.**

[Signature]

STATE OF FLORIDA
COUNTY OF _____

Sworn to and subscribed before me this _____ day of _____ 2015 by

Personally known _____ OR Produced identification

[Type of identification]

Notary Public Signature My commission expires: _____

[Print, type or stamp Commissioned name of Notary Public]

Signatory Requirement - In the case of a business entity other than a partnership or a corporation, this affidavit shall be executed by an authorized agent of the entity. In the case of a partnership, this affidavit shall be executed by the general partner(s). In the case of a corporation, this affidavit shall be executed by the corporate president.

LABEL TO AFFIX TO OUTSIDE OF PACKAGE (if mailing)

Cut along the outside border and affix this label to your Quote envelope to identify it. Be sure to include the name of the company submitting the Quote where requested.

LABEL TO AFFIX TO OUTSIDE OF QUOTE PACKAGE**QUOTE PACKAGE****CONTRACTOR:** _____**REQUEST FOR QUOTE NO:** 16-0105-DS**QUOTE TITLE:** Ellenton Gillette Road Directional Drill
Automated Traffic Management System (ATMS) Conduit**DUE DATE/TIME:** _____

GENERAL CONDITIONS
(For Construction Quotations as a Stipulated Unit Cost Contract)

ARTICLE I - DEFINITIONS

Whenever used in the Contract Documents, the following terms have the meaning indicated which are applicable to both the singular and plural thereof:

Addendum - Written or graphic instruments issued prior to the opening of Quotes which clarify or change the bidding documents.

Administrative Contract Adjustment (ACA) – A minor change to a Contract, which is less than 10% of the Contract Price or less than 20% of the Contract Time, and does not require Board approval. (Reference Resolution R-07-189)

Application for Payment - The form accepted by the Project Representative which is to be used by Contractor in requesting progress or final payments and which is to include such supporting documentation as is required by the Contract Documents.

Award - Acceptance of the Quotation from the person, firm, or corporation which in the Owner's sole and absolute judgment will under all circumstances best serve the public interest. Award shall be made in accordance with Chapter 2-26 of the Manatee County Code.

Bid Bond- An insurance agreement, accompanied by a monetary commitment, by which a third party (the Surety) accepts liability and guarantees that the Quoter will not withdraw the Quote.

Quote Summary – Specifications or scope of Work that specifically describes the Work to be done for this Project.

Bond Rider – A Bond Rider increases the Performance Bond coverage to ensure responsibility of the Contractor in executing the Work for the County in consideration of the increased value resulting from an approved change to the Contract amount.

Change Order - A document recommended by the Project Representative which is signed by Contractor and Owner and authorizes an addition, deletion, or revision in the Work or an adjustment in the Contract Price or the Contract Time, issued on or after the Effective Date of the Contract.

Compensable Delay - Any delay beyond the control and without the fault or negligence of the Contractor resulting from County-caused changes in the Work, differing site conditions, suspensions of the Work, or termination for convenience by County.

Contract – The written Contract between County and Contractor covering the Work to be performed, other Contract Documents are attached to the Contract and made a part thereof as provided therein.

Contract Contingency – A monetary allowance used at the County's discretion, which is part of the total sum of the Contract that allows for minor changes in the Contract that do not change the initial Scope of Work, including Contract Price and Contract Time.

Contract Documents - The Contract, Quotation in its entirety, Public Construction Bond Form (when applicable) and Insurance Certificate(s), Drawings/Plans, Addenda (which pertain to the Quotation Documents), Contractor's Quote Form (including documentation accompanying the Quote and any post-Quote documentation submitted prior to the Notice of Award), and Reports, together with all written Change Orders and other documents amending, modifying or supplementing the Contract Documents issued on or after the Effective Date of the Contract.

Contract Price - The monies payable by County to Contractor under the Contract Documents as stated in the Contract.

Contract Time - The number of days or the date stated in the Notice to Proceed for the completion of the Work.

Contractor - The person, firm or corporation with whom County has entered into a Contract.

Days - All references to days are to be considered calendar days except as specified differently.

Defective - An adjective which when modifying the Work refers to work that is unsatisfactory, faulty or deficient, or does not conform to the Contract Documents, or does not meet the requirements of any inspection, reference standard, test or approval referred to in the Contract Documents, or has been damaged prior to Project Representative's recommendation of final payment (unless responsibility for the protection thereof has been assumed by County).

Drawings - The drawings which show the character and Scope of the Work to be performed and which have been prepared or approved by Engineer and are referred to in the Quoting and Contract Documents.

Effective Date of the Agreement - The date indicated in the Contract on which it becomes effective (date of execution).

Engineer – Licensed professional who is responsible for the preparation, signing, dating, sealing and issuing of any engineering document (s) for any engineering service or Work.

Excusable Delay - Any delay beyond the control and without the negligence of the Contractor, the County, or any other Contractor caused by events or circumstances such as, but not limited to, acts of God or of the public enemy, fires, floods, freight embargoes, acts of government other than County or epidemics. Labor disputes and above average rainfall shall give rise only to Excusable Delays.

Field Directive- A written order issued by an authorized County Representative which approves changes in the Work, but which does not involve a change in the initial Scope of work, including the Contract Price and the Contract Time. A Field Directive must be issued by an authorized County Representative to authorize use of Contract Contingency funds.

Final Completion – The Work (including items defined on the Punch List) has been completed, accepted in writing by the County, approved as-builts have been received, and is ready for final payment.

Float or Slack Time - The time available in the progress schedule during which an unexpected activity can be completed without delaying Substantial Completion of the Work.

Inexcusable Delay - Any delay caused by events or circumstances within the control of the Contractor, such as inadequate crewing, slow submittals, etc., which might have been avoided by the exercise of care, prudence, foresight, or diligence on the part of the Contractor.

Information (Pre-Bid/Pre Quote) Conference – A meeting held by the Purchasing Division with potential Quoters, prior to the opening of the solicitation, for the purpose of answering questions, clarifying ambiguities, and responding to general issues in order to establish a common basis for understanding all of the requirements of the solicitation, may result in the issuance of an Addendum.

Material Breach – A substantial failure in the performance of the Contract, as to give the affected party the right to remedies available in the Contract.

Non-prejudicial Delay - Any delay impacting a portion of the Work within the available total Float or Slack Time and not necessarily preventing completion of the Work within the Contract Time.

Notice of Award - The written notice to the successful Quoter stating Award has been approved by the Board of County Commissioners; or by the Purchasing Official in accordance with Chapter 2-26 of the Manatee County Code.

Notice of Intent to Award - The written notice to the apparent low Quoter stating Award has been recommended with final Award to be authorized by the Purchasing Official or Board of County Commissioners, as appropriate.

Notice to Proceed - Written notice by County (after execution of Contract) to Contractor fixing the date on which the Contract Time will commence to run and on which Contractor shall start to perform (ten (10) days from date of such notice) Contractor's obligations under the Contract Documents.

Payment Bond – an instrument, issued by a Surety that guarantees that Subcontractors will be paid for labor expended on the Contract.

Preconstruction Conference - Prior to starting the Work, a meeting scheduled by County, with Contractor to review the Work schedules, to establish procedures for handling Shop Drawings and other submissions, for processing periodical pay estimates, and such other matters as may be pertinent to the project.

Prejudicial Delay - Any excusable or Compensable Delay impacting the Work and exceeding the total float available in the progress schedule, thus preventing completion of the Work within the contract time unless the Work is accelerated.

Pre-operation Testing - All field inspections, installation checks, water tests, performance tests and necessary corrections required of Contractor to demonstrate that individual components of the Work have been properly constructed and do operate in accordance with the Contract Documents for their intended purposes.

Project - The total construction of which the Work to be provided under the contract documents may be the whole or a part as indicated elsewhere in the contract documents.

Project Representative - The authorized representative of Manatee County who is assigned to the project or any part thereof.

Punch List – A list of minor deficiencies or additional Work that does not prohibit achieving Substantial Completion yet must be completed before Final Completion of the Contract can be achieved

Retainage: A certain percentage, identified in the solicitation document, is withheld from payment due to the Contractor until the Work is fully completed and accepted by County.

Schedule of Values – In the case of a total lump sum Quote, unit prices shall be established for this Contract by the submission of a Schedule of Values. In the case of an itemized Quote, unit prices are the prices quoted. The Contractor shall submit a Schedule of Values within ten (1) days of the Notice to Proceed date. The schedule shall include quantities and prices of items equaling the Total Offer and will subdivide the Work into components in sufficient detail to serve as the basis for progress payments during construction. Such prices will include an appropriate amount of overhead and profit applicable to each item of Work. Upon request of the County, the Contractor shall support the values with data which will substantiate their correctness.

Shop Drawings - All drawings, diagrams, illustrations, schedules and other data which are specifically prepared by or for Contractor to illustrate some portion of the Work and all illustrations, brochures, standard schedules, performance charts, instructions, diagrams and other information prepared by a supplier and submitted by Contractor to illustrate material or equipment for some portion of the Work.

Special Provisions: As required to define work or procedures not covered in the standard specifications, and as necessary to supplement or modify items in the standard Specifications

Specifications - Those portions of the contract documents consisting of written technical descriptions of materials, equipment, construction systems, standards and workmanship as applied to the Work and certain administrative details applicable thereto.

Subcontractor - An individual or corporation having a direct contact with Contractor or with any other subcontractor for the performance of a part of the Work at the site. Such person or firm has contractual relations with the Contractor, not with the County.

Substantial Completion - The stage in the progress of the Work (or a specified part thereof) is sufficiently complete in accordance with Contract Documents so that the Work can be utilized for the intended purpose.

Successful Quoter - The lowest qualified, responsible and responsive Quoter to whom an Award is made.

Supplier - A manufacturer, fabricator, Supplier, distributor, materialman or vendor.

Surety - A pledge or guarantee by an insurance company, bank, individual or corporation on behalf of the Quoter which protects against default or failure of the principal to satisfy the contractual obligations.

Quotation - The offer of the Quoter submitted on the prescribed form setting forth the prices for the Work to be performed.

Quoter - One who submits a Quote directly to the Owner, as distinct from a Subcontractor, who submits an offer to a Contractor.

Quotation Documents - Consists of the Quotation, which includes but is not limited to: the Quotation form, drawings, technical Specifications, terms and conditions, and the proposed Contract Documents (including all Addenda issued prior to receipt of Quotations); and becomes a part of the resulting Contract.

Underground Facilities - All pipelines, conduits, ducts, cables, wires, manholes, vaults, tanks, tunnels or other such facilities or attachments and any encasement containing such facilities which have been installed underground to furnish any of the following services or materials: electricity, gases, steam, liquid petroleum products, telephone or other communications, cable television, sewage and drainage removal, traffic or other control systems or water.

Unit Price Work - Work to be paid for on the basis of unit prices.

Work - The entire completed construction or the various separately identifiable parts thereof required to be furnished under the Contract Documents. Work is the result of performing services, furnishing labor and furnishing and incorporating materials and equipment into the construction, all as required by the Contract Documents.

Work Directive Change - A written directive to Contractor issued on or after the effective date of the Contract and signed by County and recommended by Project Representative ordering an addition, deletion or revision in the Work, or responding to differing or unforeseen physical conditions under which the Work is to be performed or to emergencies. A Work Directive Change may not change the Contract Price or the Contract Time; but is evidence that the parties expect that the change directed or documented by a Work Directive Change will be incorporated in a subsequently issued Change Order following negotiations by the parties as to its effect, if any, on the Contract Price or Contract Time.

Written Amendment - A Written Amendment of the Contract Documents, signed by County and Contractor on or after the Effective Date of the Contract and normally dealing with the non-engineering or non-technical rather than strictly Work related aspects of the Contract Documents.

ARTICLE 2 - PRELIMINARY MATTERS

Computation of Time: When time is referred to in the Contract Documents by days, it will be computed to exclude the first and include the last day of such period. If the last day of any such period falls on a Saturday or Sunday or legal holiday, such day will be omitted from the computation.

- 2.1 The Contractor must submit a proposed schedule of the Work at the Preconstruction Conference. The purpose of this schedule is to enable the County to govern the Work, to protect the functions of the local government and its citizens and to aid in providing appropriate surveillance. The County shall have the right to reschedule Work provided such rescheduling is in accordance with the remainder of terms of the Contract. The schedule shall show, as a minimum, the approximate dates on which each segment of the Work is expected to be started and finished, the proposed traffic flows during each month, the anticipated earnings by the Contractor for each month and the approximate number of crews and equipment to be used. The County, after necessary rescheduling and obtaining additional information for specific purposes, shall review and approve the schedule. The Contractor shall also forward to the County, as soon as practicable after the first day of each month, a summary report of the progress of the various parts of the Work under the Contract, in fabrication and in the field, stating the existing status, estimated time of completion and cause of delay, if any. Together with the summary report, the Contractor shall submit any necessary revisions to the original schedule for the County's review and approval. In addition, more detailed schedules may be required by the County for daily traffic control.
- 2.2 A Notice to Proceed may be given at any time within thirty (30) days after the Effective Date of the Contract. The Contract Time will commence at the time specified in such notice. Contractor shall start to perform the Work on the date specified in the Notice To Proceed, but no Work shall be done at the site prior to the date on which the Contract Time commences to run.

- 2.3 If at any time the materials and appliances to be used appear to the County as insufficient or improper for securing the quality of Work required or the required rate of progress, the County may order the Contractor to increase his efficiency or to improve the character of his Work and the Contractor shall conform to such an order. The failure of the County to demand any increase of such efficiency of any improvement shall not release the County from his obligation to secure the quality of work or the rate of progress necessary to complete the Work within the limits imposed by the contract. The County may require the Contractor to remove from the Work such employees as the County deems incompetent, careless, insubordinate or otherwise objectionable, or whose continued employment on the Work is deemed to be contrary to the County's interest.
- 2.4 The County reserves the right to let other Contracts in connection with this Work. The Contractor shall afford other Contractors reasonable opportunity for the introduction and storage of their materials and execution of their Work, and promptly connect and coordinate the Work with theirs.

ARTICLE 3 - CONTRACT DOCUMENTS: INTENT, AMENDING, RE-USE

- 3.1 The Contract Documents comprise the entire Contract between County and Contractor concerning the work. The Contract Documents are complementary; what is called for by one is as binding as if called for by all. The Contract Documents will be construed in accordance with the laws and ordinances of the State of Florida and Manatee County.

Should a conflict exist within the Contract Documents, the precedence in ascending order of authority are as follows: 1) Standard Printed Contract Documents, 2) Special Conditions, 3) General Conditions, and 4) Drawings. Note: Computed dimensions shall govern over scaled dimensions.

- 3.2 It is the intent of the Contract Documents to describe a functionally complete project (or part thereof) to be constructed in accordance with the Contract Documents. Any work, materials or equipment that may reasonably be inferred from the Contract Documents as being required to produce the intended result will be supplied whether or not specifically called for. When words which have a well-known technical or trade meaning are used to describe work, materials, or equipment, such words shall be interpreted in accordance with that meaning. Reference to standard specifications, manuals or codes of any technical society, organization or association, or to the laws or regulations of any governmental authority, whether such reference be specific or by implication, shall mean the latest standard specification, manual, code or laws or regulations in effect at the time of opening of bids, except as may be otherwise specifically stated. However, no provision of any referenced standard specification, manual or code (whether or not specifically incorporated by reference in the Contract Documents) shall be effective to change the duties and responsibilities of County, Contractor or

Engineer, or any of their agents or employees from those set forth in the Contract Documents.

- 3.3 The Contract Documents may be amended to provide for additions, deletions and revisions in the Work or to modify the terms and conditions thereof in one or more of the following ways:
 - 3.3.1 A Formal Written Amendment
 - 3.3.2 A Change Order
 - 3.3.3 Administrative Contract Adjustment (ACA)
 - 3.3.4 A Work Directive Change
- 3.4 In addition, the requirements of the Contract Documents may be supplemented and minor variations and deviations in the Work may be authorized in one or more of the following ways:
 - 3.4.1 Discretionary Work – Field Directive
 - 3.4.2 Engineer's approval of a Shop Drawing or sample

ARTICLE 4 - CONTRACTOR'S RESPONSIBILITIES

- 4.1 Contractor shall keep on the Work at all times during its progress a competent resident superintendent; who shall be the Contractor's representative at the site and shall have authority to act on behalf of Contractor. All communications given to the superintendent shall be as binding as if given to Contractor.
- 4.2 Contractor shall provide competent, suitable qualified personnel to survey and lay out the Work and perform construction as required by the Contract Documents. Contractor shall at all times maintain good discipline and order at the site. Except in connection with the safety or protection of persons or the Work or property at the site or adjacent thereto and except as otherwise indicated in the Contract Documents, all Work at the site shall be performed during regular working hours and Contractor will not permit overtime work or the performance of work on Saturday, Sunday or legal holiday without County's written consent given after prior notice to Engineer (at least 72 hours in advance).
 - 4.2.1 Contractor shall pay for all additional engineering charges to the County for any overtime Work which may be authorized. Such additional engineering charges shall be a subsidiary obligation of Contractor and no extra payment shall be made by County on account of such overtime work. At County's option, overtime costs may be deducted from Contractor's monthly payment request or Contractor's Retainage prior to release of final payment.

- 4.3 Unless otherwise specified, Contractor shall furnish and assume full responsibility for all bonds, insurance, materials, equipment, labor, transportation, construction equipment and machinery, tools, appliances, fuel, power, light, heat, telephone, water, sanitary facilities, temporary facilities and all other facilities and incidentals necessary for the furnishing, performance, testing, start-up and completion of the Work.
- 4.4 All materials and equipment shall be of good quality and new, except as otherwise provided in the Contract Documents. If required by Engineer, Contractor shall furnish satisfactory evidence (including reports of required tests) as to the kind and quality of materials and equipment. All materials and equipment shall be applied, installed, connected, erected, used, cleaned and conditioned in accordance with the instruction of the applicable supplier except as otherwise provided in the Contract Documents.
- 4.5 Contractor shall be fully responsible to County for all acts and omissions of the subcontractors, suppliers and other persons and organizations performing or furnishing any of the Work under a direct or indirect contract with Contractor just as Contractor is responsible for Contractor's own acts and omissions. Nothing in the Contract Documents shall create any contractual relationship between County or Engineer and any such subcontractor, supplier or other person or organization, nor shall it create any obligation on the part of County to pay or to see to the payment of any monies due any such Subcontractor, Supplier or other person or organization.
- 4.6 Permits: Unless otherwise provided, Contractor shall obtain and pay for all construction permits and licenses. County shall assist Contractor, when necessary, in obtaining such permits and licenses. Contractor shall pay all governmental charges and inspection fees necessary for the prosecution of the Work.
- 4.7 During the progress of the Work, Contractor shall keep the premises free from accumulation of waste materials rubbish and other debris resulting from the Work. At the completion of the Work, Contractor shall remove all waste materials, rubbish and debris from and about the premises as well as all tools, appliances, construction equipment and machinery and surplus materials and shall leave the site clean and ready for occupancy by County. Contractor shall restore to original conditions all property not designated for alteration by the Contract Documents.
- 4.8 Contractor shall not load nor permit any part of any structure to be loaded in any manner that will endanger the structure, nor shall Contractor subject any part of the Work or adjacent property to stresses or pressures that will endanger it.
- 4.9 Safety and Protection: Contractor shall comply with the Florida Department of Commerce Safety Regulations and any local safety regulations. Contractor shall be responsible for initiating, maintaining and supervising all safety precautions and programs in connection with the Work. Contractor shall take all necessary precautions for the safety of and shall provide the necessary protection to prevent damage, injury or loss to:
- 4.9.1 all employees on the work and other persons and organizations who may be affected thereby;

- 4.9.2 all the Work and materials and equipment to be incorporated therein, whether in storage on or off the site; and
- 4.9.3 other property at the site or adjacent thereto, including trees, shrubs, lawns, walks, pavements, roadways, structures, utilities and Underground Facilities not designated for removal, relocation or replacement in the course of construction.

Contractor shall comply with all applicable laws and regulations of any public body having jurisdiction for the safety of persons or property or to protect them from damage, injury or loss; and shall erect and maintain all necessary safeguards for such safety and protection. Contractor shall provide and maintain all passageways, guard fences, lights and other facilities for the protection required by public authority or local conditions. Contractor shall provide reasonable maintenance of traffic way for the public and preservation of the County's business, taking into full consideration all local conditions. Contractor's duties and responsibilities for the safety and protection of the Work shall continue until such time as all the Work is completed.

- 4.10 Emergencies: In emergencies affecting the safety or protection of persons or the work or property at the site or adjacent thereto, Contractor, without special instruction or authorization from Engineer or County, is obligated to act to prevent threatened damage, injury or loss. Contractor shall give County prompt written notice if Contractor believes that any significant changes in the Work or variations from the Contract Documents have been caused thereby. If County determines that a change in the Contract Documents is required because of the action taken in response to an emergency, a Work Directive Change or Change Order will be issued to document the consequences of the changes or variation.
- 4.11 For substitutes not included with the Quote, but submitted after the effective date of the Contract. Contractor shall make written application to Engineer for acceptance thereof, certifying that the proposed substitute will perform adequately the functions and achieve the results called for by the general design, be similar and of equal substance to that specified and be suited to the same use as that specified. The application will also contain an itemized estimate of all costs and delays or schedule impacts that will result directly or indirectly from review, acceptance and provisions of such substitute, including costs of redesign and claims of other Contractors affected by the resulting change, all of which will be considered by the Engineer in evaluating the proposed substitute. In rendering a decision, County/Engineer and Contractor shall have access to any available Float or Slack Time in the construction schedule. In the event that substitute materials or equipment not included as part of the Quote, but proposed after the Effective Date of the Contract, are accepted and are less costly than the originally specified materials or equipment, then the net difference in cost shall be credited to the County and an appropriate Change Order executed.
 - 4.11.1 If a specific means, method, technique, sequence of procedure of construction is indicated in or required by the Contract Documents, Contractor may furnish

or utilize a substitute means, method, sequence, technique or procedure of construction acceptable to Engineer if Contractor submits sufficient information to allow Engineer to determine that the substitute proposed is equivalent to that indicated or required by the Contract Documents.

4.11.2 Engineer will be allowed a reasonable time within which to evaluate each proposed substitute. Engineer will be the sole judge of acceptability and no substitute will be ordered, installed or utilized without Engineer's prior written acceptance which will be evidenced by either a Change Order or an approved shop drawing. County may require Contractor to furnish at Contractor's expense a special performance guarantee or other surety with respect to any substitute.

4.11.3 Contractor shall reimburse County for the charges of Engineer and Engineer's consultants for evaluating each proposed substitute submitted after the effective date of the Contract and all costs resulting from any delays in the work while the substitute was undergoing review.

4.12 The Contractor shall furnish, free of charge, all labor, stakes, surveys, batter boards for structures, grade lines and other materials and supplies and shall set construction stakes and batter boards for establishing lines, position of structures, slopes and other controlling points necessary for the proper prosecution of the construction work. Where rights-of-way, easements, property lines or any other conditions which make the lay-out of the project or parts of the project critical are involved, the Contractor will employ a competent surveyor who is registered in the State of Florida for lay-out and staking. These stakes and marks shall constitute the field control by and in accord with which the Contractor shall govern and execute the Work. The Contractor will be held responsible for the preservation of all stakes, marks and if for any reason any of the stakes or marks or batter boards become destroyed or disturbed, they will be immediately and accurately replaced by the Contractor.

4.13 The Contractor has, by careful examination, satisfied himself as to the nature and location of the Work and all other matters which can in any way affect the Work under this Contract, including, but not limited to details pertaining to boring, as shown on the drawings, are not guaranteed to be more than a general indication of the materials likely to be found adjacent to holes bored at the site of the work, approximately at the locations indicated. The Contractor shall examine boring data, where available, and make his own interpretation of the subsoil investigations and other preliminary data, and shall base his bid on his own opinion of the conditions likely to be encountered. In no event shall an extension of time be considered for any conditions that existed at the time of bidding, nor shall the Contractor receive extra compensation for completion of the project as intended by the drawings and in keeping with the contract documents. No verbal Contract or conversation with any officer, agent or employee of the County, before or after the execution of this contract, shall affect or modify any of the terms or obligations herein contained.

- 4.14 If the Contractor, in the course of the work, finds that the drawings and/or Contract Documents cannot be followed, he shall immediately inform the County in writing, and the County shall promptly check the accuracy of the information. Any work done after such discovery, until any necessary changes are authorized, will be done at the Contractor's risk.

ARTICLE 5 - COUNTY'S RESPONSIBILITIES

- 5.1 County shall furnish the data required of County under the Contract Documents promptly and shall make payments to the Contractor within a reasonable time after the Work has been accepted by the County. Payment shall be made no more than twenty (20) business days if County is its own Engineer of Record or twenty-five (25) business days if outside agent approval is required after the pay estimate has been approved by the agent for the County. The form of all submittals, notices, Change Orders and other documents permitted or required to be used or transmitted under the Contract Documents shall be determined by the County/Engineer. Standard County forms shall be utilized.
- 5.2 The County shall provide the lands upon which the Work under this Contract is to be done, except that the Contractor shall provide all necessary additional land required for the erection of temporary construction facilities and storage of his materials, together with right of access to same.
- 5.3 The County shall have the right to take possession of and use any completed portions of the Work, although the time for completing the entire Work or such portions may not have expired, but such taking possession and use shall not be deemed an acceptance of any Work not completed in accordance with the Contract Documents.

ARTICLE 6 - CHANGES IN THE WORK

- 6.1 Without invalidating the Contract and without notice to any Surety, County may, at any time, order additions, deletions or revisions in the Work. These will be authorized by a Written Amendment, a Change Order, or a Work Directive Change. Upon receipt of any such document, Contractor shall promptly proceed with the Work involved which will be performed under the applicable conditions of the Contract Documents (except as otherwise specifically provided).
- 6.2 Contractor shall not be entitled to an increase in the Contract Price or an extension of the Contract Time with respect to any Work performed that is not required by the Contract Documents as amended, modified and supplemented.
- 6.3 County and Contractor shall execute appropriate Change Orders or Written Amendments covering changes in the Work which are ordered by County, or which may be required because of acceptance of defective Work.
- 6.4 At any time Engineer may request a quotation from Contractor for a proposed change in the Work and within twenty-one (21) calendar days after receipt, Contractor shall submit a written and detailed proposal for an increase or decrease in the Contract Price or Contract Time for the proposed change. Engineer shall have 21 calendar

days after receipt of the detailed proposal to respond in writing. The proposal shall include an itemized estimate of all costs and time for performance that will result directly or indirectly from the proposed change. Unless otherwise directed, itemized estimates shall be in sufficient detail to reasonably permit an analysis by Engineer of all material, labor, equipment, subcontracts, overhead costs and fees, and shall cover all Work involved in the change, whether such Work was deleted, added, changed or impacted. Notwithstanding the Request for Quotation, Contractor shall carry on the Work and maintain the progress schedule. Delays in the submittal of the written and detailed proposal will be considered non-prejudicial.

ARTICLE 7 - CHANGE OF CONTRACT PRICE

- 7.1 The Contract Price constitutes the total compensation (subject to authorized adjustments) payable to Contractor for performing the Work. All duties, responsibilities and obligations assigned to or undertaken by Contractor shall be at his expense without change in the Contract Price.
- 7.2 The Contract Price may only be changed by Change Order or by a Written Amendment. Any claim for an increase or decrease in the Contract Price shall be based on written notice delivered by the party making the claim to the other party. Notice of the amount of the claim with supporting data shall be delivered within ten (10) days from the beginning of such occurrence and shall be accompanied by claimant's written statement that the amount claimed covers all known amounts (direct, indirect and consequential) to which the claimant is entitled as a result of the occurrence of said event.
- 7.3 The value of any Work covered by a Change Order or of any claim for an increase or decrease in the Contract Price shall be determined in one of the following ways, at County's discretion:
 - 7.3.1 Where the Work involved is covered by unit prices contained in the Contract Documents, cost will be determined by application of such unit prices to the quantities of the items involved.
 - 7.3.2 By mutual acceptance of lump sum.
 - 7.3.3 On the basis of the cost of the Work, plus a 15% Contractor's fee for overhead and profit. (Contractor shall submit an itemized cost breakdown together with supporting data.)
- 7.4 Either County or Contractor may make a claim for an adjustment in the Contract Price. The unit price of an item of Unit Price Work shall be subject to re-evaluation and adjustment under the following conditions:
 - 7.4.1 If the total cost of a particular item of unit price Work amounts to 5% or more of the Contract Price and the variation in the quantity of the particular item of Unit Price Work performed by Contractor differs by more than 15% from the estimated quantity of such item indicated in the Contract ; and

- 7.4.2 If there is no corresponding adjustment with respect to any other item of Work; and
- 7.4.3 If a Contractor believes that it has incurred additional expense as a result thereof; or
- 7.4.4 If County believes that the quantity variation entitles it to an adjustment in the unit price; or
- 7.4.5 If the parties are unable to agree as to the effect of any such variations in the quantity of unit price Work performed.

ARTICLE 8 - CHANGE OF CONTRACT TIME

- 8.1 Contract Time may only be changed by a Change Order or a Written Amendment. Any claim for an extension or shortening of the contract time shall be based on written notice delivered by the party making the claim to the other party. Notice of the extent of the claim with supporting data shall be delivered within fifteen (15) days from detection or beginning of such occurrence and shall be accompanied by the claimant's written statement that the adjustment claimed is the entire adjustment to which the claimant has reason to believe it is entitled as a result of the occurrence of said event.
- 8.2 The Contract Time will be extended in an amount equal to time lost due to delays beyond the control of Contractor. Such delays shall include, but not be limited to, acts or neglect by County or others performing additional work; or to fires, floods, epidemics, abnormal weather conditions or acts of God.
- 8.3 All time limits stated in the Contract Documents are of the essence.

ARTICLE 9 - WARRANTY, TEST/INSPECTION, CORRECTION

- 9.1 Contractor warrants, for a minimum period of three (3) years or as otherwise stated herein, and guarantees to County that all Work will be in accordance with the Contract Documents and will not be defective; that County, representatives of County, governmental agencies with jurisdictional interests will have access to the work at reasonable time for their observation, inspecting and testing (Contractor shall give Engineer timely notice of readiness of the work for all required approvals and shall assume full responsibility, including costs, in obtaining required tests, inspections, and approval certifications and/or acceptance, unless otherwise stated by County).
- 9.2 If any Work (including work of others) that is to be inspected, tested, or approved is covered without written concurrence of Engineer, it must, if requested by Engineer, be uncovered for observation. Such uncovering shall be at Contractor's expense unless Contractor has given Engineer timely notice of Contractor's

intention to cover the same and Engineer has not acted with reasonable promptness in response to such notice. Neither observations by Engineer nor inspections, tests, or approvals by others shall relieve Contractor from Contractor's obligations to perform the Work in accordance with the Contract Documents.

- 9.3 If the Work is defective, or Contractor fails to supply sufficient skilled workers, or suitable materials or equipment, or fails to furnish or perform the work in such a way that the completed work will conform to the Contract Documents, County may order Contractor to stop the work, or any portion thereof and terminate payments to the Contractor until the cause for such order has been eliminated. Contractor shall bear all direct, indirect and consequential costs for satisfactory reconstruction or removal and replacement with non-defective Work, including, but not limited to fees and charges of engineers, architects, attorneys and other professionals and any additional expenses experienced by County due to delays to other Contractors performing additional Work and an appropriate deductive change order shall be issued. Contractor shall further bear the responsibility for maintaining schedule and shall not be entitled to an extension of the Contract Time and the recovery of delay damages due to correcting or removing defective Work.
- 9.3.1 If Contractor fails within seven (7) days after written notice to correct defective Work, or fails to perform the Work in accordance with the Contract Documents, or fails to comply with any other provision of the Contract Documents, County may correct and remedy any such deficiency to the extent necessary to complete corrective and remedial action, County may exclude Contractor from all or part of the site, take possession of all or part of the work, Contractor's tools, construction equipment and machinery at the site or for which County has paid Contractor but which are stored elsewhere. All direct, indirect and costs of County in exercising such rights and remedies will be charged against Contractor in an amount approved as to reasonableness by Engineer and a change order will be issued incorporating the necessary revisions.
- 9.3.2 If within three (3) years after the date of completion or such longer period of time as may be prescribed by laws or regulations or by the terms of any applicable special guarantee required by the Contract Documents, any Work is found to be defective, Contractor shall promptly, without cost to County and in accordance with County's written instructions, either correct such defective Work or if it has been rejected by County, remove it from the site and replace it with non-defective Work. If Contractor does not promptly comply with the terms of such instruction, County may have the defective Work corrected or removed and all direct, indirect and consequential costs of such removal and replacement will be paid by Contractor.

ARTICLE 10 - SUSPENSION/TERMINATION OF WORK

- 10.1 County reserves the right to suspend the Work, or any portion thereof, at any time without cause for a period of not to exceed ninety (90) days by written notice to Contractor, which will fix the date on which Work will be resumed. Contractor shall be allowed an increase in the Contract Price or an extension of the Contract Time,

or both, directly attributable to any suspension if Contractor makes an approved claim therefore.

- 10.1.1 If Work is suspended by County for a period that exceeds ninety (90) days, or if Work is suspended by an order of court or other public authority, or if County fails to pay Contractor, then Contractor may, upon seven (70 days written notice to County, terminate the Contract and recover payment for all Work executed.
- 10.1.2 In lieu of terminating the Contract, if the Engineer has failed to act on any Application for Payment or County has failed to make any payment as aforesaid, Contractor may, upon seven (70 days written notice to County, stop the Work until payment of all amounts then due have been received.
- 10.2 County reserves the right, after giving seven (7) days written notice, to terminate this Contract if:
 - 10.2.1 Contractor persistently fails to perform the Work in accordance with the Contract Documents;
 - 10.2.2 Contractor disregards laws or regulations of any public body having jurisdiction;
 - 10.2.3 Contractor commences a voluntary case under any chapter of the Bankruptcy Code or similar relief under any other federal or state law relating to bankruptcy or insolvency;
 - 10.2.4 County has a petition filed against them under any chapter of the Bankruptcy Code or similar relief under any other federal or state law;
- 10.3 County may exclude Contractor from the site and take possession of the Work and of all Contractor's tools, construction equipment and machinery at the site and use same to the full extent they could be used (without liability to Contractor for trespass or conversion); incorporate in the Work all materials and equipment stored at the site or for which County has paid Contractor but which are stored elsewhere, and finish the Work as County may deem expedient.
 - 10.3.1 Contractor shall not be entitled to receive any further payment beyond an amount equal to the value of material and equipment not incorporated in the Work, but delivered and suitably stored, less the aggregate of payments previously made.
 - 10.3.2 County may terminate the contract if Contractor commences a voluntary case under any chapter of the Bankruptcy Code or any similar action by filing a petition under any other federal or state law relating to the bankruptcy or insolvency; if a petition is filed against the Contractor under any chapter of the Bankruptcy Code or similar relief under any other federal or state law; if

Contractor persistently fails to perform the work in accordance with the Contract Documents; if Contractor disregards laws or regulations of any public body having jurisdiction or the Engineer; or otherwise violates in any substantial way any provisions of the contract.

10.3.3 County may, after giving Contractor (and the surety, if there is one) seven (7) days written notice and to the extent permitted by laws and regulations, terminate the services of Contractor; exclude Contractor from the site and take possession of the work and of all Contractor's tools, construction equipment and machinery at the site and use the same to the full extent they could be used (without liability to Contractor for trespass or conversion); incorporate in the work all materials and equipment stored at the site or for which County has paid Contractor but which are stored elsewhere, and finish the work as County may deem expedient. In such case, Contractor shall not be entitled to receive any further payment beyond an amount equal to the value of material and equipment not incorporated in the work, but delivered and suitably stored, less the aggregate of payments previously made. If the direct and indirect costs of completing the work exceed the unpaid balance of the contract price, Contractor shall pay the difference to County. Such costs incurred by County shall be verified by County and incorporated in a change order; but in finishing the work, County shall not be required to obtain the lowest figure for the work performed. Contractor's obligations to pay the difference between such costs and such unpaid balance shall survive termination of the Contract.

10.4 If, through no act or fault of Contractor, the work is suspended for a period of more than ninety (90) days by County or under an order of court or other public authority, or Engineer fails to act on any application or fails to pay Contractor any sum finally determined to be due; then Contractor may, upon seven (7) days written notice to County terminate the Contract and recover from County payment for all work executed, any expense sustained plus reasonable termination expenses. In lieu of terminating the Contract, if Engineer has failed to act on any application of payment or County has failed to make any payment as aforesaid, Contractor may upon seven (7) days written notice to County stop the work until payment of all amounts then due.

ARTICLE 11 - CONTRACT CLAIMS

11.1 The rendering of a decision by Engineer with respect to any such claim, dispute or other matter (except any which have been waived by the making or acceptance of final payment) will be a condition precedent to any exercise by County or Contractor of such right or remedies as either may otherwise have under the Contract Documents or by laws or regulations in respect of any such claim, dispute or other matter. No action, either at law or at equity, shall be brought in connection with any such claim, dispute or other matter later than thirty (30) days after the date on which County/Engineer has rendered such written decision in respect thereof. Failure to bring an action within said thirty (30) day period shall result in

Engineer's decision being final and binding on the Contractor. In no event may any such action be brought after the time at which instituting such proceedings would be otherwise barred by the applicable statute of limitations.

- 11.2 Before bringing any action in court pertaining to any claim, dispute or other matter in question(s) arising out of or relating to the Contract Documents or the breach thereof, or Engineer's final decision, except for claims which have been waived by the making and acceptance of final payment, the Contractor shall first submit written notice(s) of contract claims to the Purchasing Official for a decision; within the earlier of sixty (60) days after the last date on which the contractor provided any goods or services required by the contract or after the date on which the contractor knew or should have known such a claim existed. The Manatee County Code of Laws section 2-26-63 Contract Claims details the requirements and process for such a claim.

ARTICLE 12 - RESIDENT PROJECT REPRESENTATIVE DUTIES, RESPONSIBILITIES

- 12.1 Resident Project Representative is Engineer/County's Agent, who will act as directed by and under the supervision of the Engineer, and who will confer with County/Engineer regarding his actions. Resident Project Representative's dealing in matters pertaining to the on-site work shall, in general, be only with the County/Engineer and Contractor and dealings with subcontractors shall only be through or with the full knowledge of Contractor.
- 12.2 Resident Project Representative will:
- 12.2.1 Review the progress schedule, schedule of shop drawing submissions and schedule of values prepared by Contractor and consult with County/Engineer concerning their acceptability.
 - 12.2.2 Attend preconstruction conferences. Arrange a schedule of progress meetings and other job conferences as required in consultation with County/Engineer and notify those expected to attend in advance. Attend meetings and maintain and circulate copies of minutes thereof.
 - 12.2.3 Serve as County/Engineer's liaison with Contractor, working principally through Contractor's superintendent and assist him in understanding the intent of the Contract Documents. As requested by County/Engineer, assist in obtaining additional details or information when required at the job site for proper execution of the Work.
 - 12.2.4 Receive and record date of receipt of shop drawings and samples, receive samples which are furnished at the site by Contractor and notify County/Engineer of their availability for examination.

- 12.2.5 Advise County/Engineer and Contractor or his superintendent immediately of the commencement of any work requiring a shop drawing or sample submission if the submission has not been approved by the County/Engineer.
- 12.2.6 Conduct on-site observations of the work in progress to assist County/Engineer in determining if the work is proceeding in accordance with the Contract Documents and that completed work will conform to the Contract Documents.
- 12.2.7 Report to County/Engineer whenever he believes that any work is unsatisfactory, faulty or defective or does not conform to the Contract Documents, or does not meet the requirements of any inspections, tests or approvals required or if work has been damaged prior to final payment; and advise County/Engineer when he believes work should be corrected or rejected or should be uncovered of observation or requires special testing, inspection or approval.
- 12.2.8 Verify that tests, equipment and system start-ups and operating and maintenance instructions are conducted as required by the Contract Documents and in the presence of the required personnel, and that Contractor maintains adequate records thereof; observe, record and report to Engineer appropriate details relative to the test procedures and start-ups.
- 12.2.9 Accompany visiting inspectors representing public or other agencies having jurisdiction over the project; record the outcome of these inspections and report to County/Engineer.
- 12.2.10 Transmit to Contractor, County/Engineer's clarifications and interpretations of the Contract Documents.
- 12.2.11 Consider and evaluate Contractor's suggestions or modifications in drawings or Contract Documents and report them with recommendations to County/Engineer.
- 12.2.12 Maintain at the job site orderly files for correspondence, reports of job conferences, shop drawings and sample submissions, reproductions of original Contract Documents including all addenda, change orders, field orders, additional drawings issued subsequent to the execution of the contract, County/Engineer's clarifications and interpretations of the Contract Documents, progress reports and other project related documents.
- 12.2.13 Keep a diary or log book, recording hours on the job site, weather conditions, data relative to questions of extras or deductions; list of visiting officials and representatives or manufacturers, fabricators, suppliers and distributors; daily activities, decisions, observations in

general and specific observations in more detail as in the case of observing test procedures. Send copies to County/Engineer.

- 12.2.14 Record names, addresses and telephone numbers of all Contractors, subcontractors and major suppliers of materials and equipment.
- 12.2.15 Furnish County/Engineer periodic reports as required of progress of the work and Contractor's compliance with the approved progress schedule and schedule of shop drawing submissions.
- 12.2.16 Consult with County/Engineer in advance of scheduling major tests, inspections or start of important phases of the work.
- 12.2.17 Report immediately the occurrence of any accident.
- 12.2.18 Review applications for payment with Contractor for compliance with the established procedure for their submission and forward them with recommendations to County/Engineer, noting particularly their relation to the schedule of values, work completed and materials and equipment delivered at the site but not incorporated in the work.
- 12.2.19 During the course of the work, verify that certificates, maintenance and operations manuals and other data required to be assembled and furnished by Contractor are applicable to the items actually installed, and deliver this material to County/Engineer for his review prior to final acceptance of the work.
- 12.2.20 Before County/Engineer issues a Certificate of Substantial Completion, submit to Contractor a list of observed items requiring completion or correction.
- 12.2.21 Conduct final inspection in the company of County/Engineer and Contractor and prepare a final list of items to be completed or corrected.
- 12.2.22 Verify that all items on final list have been completed or corrected and make recommendations to County/Engineer concerning acceptance.
- 12.3 Except upon written instructions of County/Engineer, Resident Project Representative.
 - 12.3.1 Shall not authorize any deviation from the Contract Documents or approve any substitute materials or equipment;
 - 12.3.2 Shall not exceed limitations on County/Engineer's authority as set forth in the Contract Documents;

- 12.3.3 Shall not undertake any of the responsibilities of Contractor, Subcontractors or Contractor's Superintendent, or expedite the work;
- 12.3.4 Shall not advise on or issue directions relative to any aspect of the means, methods, techniques, sequences or procedures of construction unless such is specifically called for in the Contract Documents;
- 12.3.5 Shall not advise on or issue directions as to safety precautions and programs in connection with the work;
- 12.3.6 Shall not authorize County to occupy the project in whole or in part; and
- 12.3.7 Shall not participate in specialized field or laboratory tests.

END OF SECTION

SPECIAL PROVISIONS (10/12/15) PHASE 1

Table of Contents

SECTION	PAGE
GENERAL.....	1
STANDARD SPECIFICATIONS	1
NO SEPARATE PAYMENT FOR SPECIAL PROVISIONS.....	1
MATERIALS.....	1
LABORATORY TESTING.....	2
MEASUREMENT AND PAYMENT	2
RESTORATION.....	3
COOPERATION WITH OTHERS	3
PRIORITY	3
SITE INVESTIGATION	3
PROJECT IDENTIFICATION SIGNS	4
SPECIAL TERMS AND CONDITIONS	5
DEWATERING, SHEETING AND BRACING.....	6
MAINTENANCE OF TRAFFIC.....	6
MAINTENANCE OF TRAFFIC PLAN	6
MAINTENANCE OF STORM DRAINAGE SYSTEM.....	6
SIDEWALKS TO REMAIN OPEN.....	7
DUST CONTROL	7
UNDERGROUND UTILITY LOCATIONS	7
UTILITY COORDINATION	7
UTILITY CONFLICTS	8
DAILY CLEAN-UP REQUIREMENTS	8
MAINTENANCE AND RESTORATION OF JOB SITE	8
NOTICE AND SERVICE THEREOF.....	8
REQUIREMENTS FOR CONTROL OF THE WORK.....	9
PROJECT SCHEDULE.....	9
USE OF PRIVATE PROPERTY	10
CONSTRUCTION PHOTOGRAPHY	10
POST-CONSTRUCTION STORM PIPE TESTING.....	12
CONTRACTOR TO EXECUTE NPDES “NOTICE OF INTENT”	12
WORKSITE TRAFFIC SUPERVISOR.....	12
CONTRACTOR’S SUPERVISION	13
LIST OF EMERGENCY CONTACT NUMBERS & UTILITY SERVICE MAINTENANCE ...	13
EXISTING SIDEWALK	14
PEDESTRIAN ACCESS	14
RECORD DRAWINGS AND PROJECT CERTIFICATION	14
MATERIAL TESTING TABLE	16
METHOD OF MEASUREMENT AND BASIS OF PAYMENT	17

SPECIAL PROVISIONS

GENERAL

This Section amends enhances or otherwise revises the Technical Specifications.

STANDARD SPECIFICATIONS

The standard Specifications to be used for this work shall be Division II and III the Florida Department of Transportation (FDOT) *Standard Specifications for Road and Bridge Construction*, 2015 Edition and all Supplemental Specifications thereto, hereinafter referred to as the *Standard Specifications*, for roadway construction, except as amended under this Contract.

The Contractor's work shall follow the Manatee County Public Works Utility Standards and Specifications (2009).

These specifications cover the usual construction requirements for work specified by the County Transportation Department; however, in the event it is determined that the specific work to be done is of such a nature that the method of construction, type and/or kind of material is not defined by the *Standard Specifications*, such work shall be performed in accordance with the Special Provisions.

The apparent silence of the Specifications as to any detail or the apparent omission from them of a detailed description concerning any work to be done and materials to be furnished shall be regarded as meaning that only the best general practice is to prevail and that only material and workmanship of the best quality is to be used. Interpretation of these specifications shall be made upon that basis.

NO SEPARATE PAYMENT FOR SPECIAL PROVISIONS

No separate payment will be made for the Contractor to execute Special Provisions. All expenses borne by the Contractor shall be included in the individual unit prices for the particular pay item.

MATERIALS

- a. **Delivery Tickets:** It will be necessary to submit a copy of all delivery tickets for materials used on the project, regardless of the basis of payment.
- b. **Job Mix Formula for Asphaltic Concrete:** Attention is directed to the requirement that job mix formulas for asphaltic concrete, of the type specified, be submitted at least 14 days before plant operations begin. The submitted formula should be derived, or approved, by the laboratory approved by the Owner to make test on the Project. Costs for such job mix formulation will be paid by the Contractor directly to the assigned laboratory.

- c. **Job Mix Formula for Portland Cement Concrete:** Attention is directed to the requirement that job mix design formulas for all Portland Cement Concrete, of the type specified, be submitted at least 14 days prior to use on the project. The submitted formulas shall be derived or approved by the Owner and/or its agents. All concrete mix designs shall be a minimum **3000 psi** and meet FDOT Concrete Class mix guidelines, except as follows: when approved, in writing by the Engineer, an Alternate Class I Concrete mix design formula, for concrete curb and gutter to be placed by automated curb machines, may show, as a substitution for #57 aggregate, an amount of #89 aggregate not to exceed 33 percent, by weight, of the #57 aggregate.

LABORATORY TESTING

Testing for the Work shall be performed at no expense to the Contractor. However, any test that fails or is not performed, as a result of the Contractor's action will, in turn, be back-charged to the Contractor, including the cost of all re-testing due to defective materials or construction. The testing laboratory shall be approved by the Owner.

The samples and tests used for determining the quality and acceptability of the materials and workmanship, which have been or are to be incorporated in the Work, shall conform to the requirements of the State of Florida Department of Transportation Materials Sampling, Testing and Reporting Guide, latest edition.

Testing shall also be in accordance with the applicable portions of Section 6 of the *Standard Specifications* and these specifications.

MEASUREMENT AND PAYMENT

- a. All work completed under the terms of this contract shall be measured according to United States Standard Measures.
- b. All measurements shall be taken horizontally or vertically unless specifically provided otherwise.
- c. No payment will be made for construction over a greater area than authorized, nor for material moved from outside of stakes and data shown on the plans, except when such work is performed upon instructions of the Engineer.
- d. The Contractor shall accept compensation provided under the terms of this contract as full payment for furnishing all materials and for performing all work contemplated and embraced under this contract. Such compensation shall also be for any and all loss or damage arising out of the nature of the work or from the action of the elements, or from any unforeseen difficulties or obstructions encountered during the contract period until final acceptance by the Owner.
- e. Whenever any change, or combination of changes, on the plans results in an increase or decrease in the original contract quantities, and the work added or decreased/eliminated is of the same general character as that called for on the plans, the Contractor shall accept

payment in full at the original contract unit prices for the actual quantity of work performed, with no allowance for any loss of anticipated profits.

- f. It is the Contractor's responsibility to perform a detailed quantity take-off from the plans to determine actual quantities for ordering and delivery purposes. The Owner will not be responsible for quantities ordered in excess of those installed and constructed. The Contractor should be aware that some of the pay items may have contingency quantities. Payment shall be made only for final in-place quantities.

No payment shall be made for contingency quantities or additional work unless otherwise directed and approved in writing by the Engineer.

- g. Bid Schedule Completion - the blank spaces in the bid schedule shall be filled in correctly where indicated for each and every item for which a description is given, as the bidder must state the unit prices for which he proposes to do each part of the work contemplated, and the total price for all the parts included in any or all of the combinations of the work. In case of a discrepancy, the written words for "unit price", where stated, shall be considered as being the unit price. If the bid schedule does not use the written words for the unit price, then the numerically correct "total price", shall be considered as being the total price.

RESTORATION

Payment for restoration shall be covered under the applicable restoration Pay Items as specified in the proposal. If a specific restoration Pay Item is not listed in the proposal, the cost of such work shall be included in the applicable Pay Item unless otherwise provided under separate restoration section or pay quantity of these Specifications.

COOPERATION WITH OTHERS

The Contractor shall cooperate with the owners of any underground or overhead utility lines in their removal and rearrangement operations, in order that these operations may progress in a reasonable manner and that service rendered by these parties will not be interrupted. The Owner shall not be responsible for costs associated with delays, disruptions and remobilizations attributed to utility agency scheduling.

PRIORITY

In any instance where there is an apparent conflict between these technical specifications special provisions and the corresponding terms of the "Standard Specifications", these special provisions followed by these technical specifications shall be controlling.

SITE INVESTIGATION

The Contractor acknowledges that he has satisfied himself as to the nature and location of the work; the general and local conditions, including but not restricted to those bearing upon transportation, disposal, handling and storage of materials; availability of labor, water, electric power, roads; and uncertainties of weather, water stages, tides or similar physical conditions at

the site; the conformation and conditions of the ground; the character of equipment and facilities needed preliminary to and during prosecution of the work.

The Contractor further acknowledges that he has satisfied himself as to the character, quality and quantity of surface and subsurface materials or obstacles to be encountered, insofar as this information presented by the drawings and Specifications made a part of this contract.

The Contractor shall carefully review and adhere to conditions and recommendations made in the project geotechnical report.

Any failure by the Contractor to acquaint himself with the available information will not relieve him from responsibility for estimating properly the difficulty or cost of successfully performing the work.

The Owner assumes no responsibility for any conclusions or interpretations made by the Contractor on the basis of the information made available by the Owner. The Owner also assumes no responsibility for any understanding or representations made by its officers or agents during or prior to the execution of this Contract, unless (1) such understanding or interpretations are made in writing by the Engineer or are expressly stated in the Contract and (2) the Contract expressly provides that the responsibility therefore is assumed by the Owner.

PROJECT IDENTIFICATION SIGNS

The Contractor shall be responsible for furnishing, installing and maintaining Zero (0) County project identification signs and removal of same upon completion of the construction. Project identification sign shall be constructed and maintained at the project site as directed by the Owner. The Contractor shall erect, maintain and relocate the sign as directed for the duration of the Project.

The Contractor shall mount the sign using 4-inch pressure treated lumber or as approved by the Engineer, and other supports as required, at a location mutually agreed by the Engineer and the Contractor.

The identification signs shall not be less than 32 square feet in area. The Contractor shall coordinate with the Owner for the sign verbiage before fabrication. The signs shall be painted with graphic content to include:

- Title of Project
- Name of Owner
- Names and Titles of authorities, as directed by Owner
- Prime Contractor
- Construction Cost

The signs shall be erected prior to commencement of work at a lighted location of high public visibility, adjacent to the main entrance at each end of the project, as approved by the Engineer and Owner.

The signs shall be a minimum of 8 feet wide and 4 feet high. The signs shall be constructed of high density 3/4-inch exterior plywood without waves or buckles, mounted and braced with pressure treated lumber as necessary and maintained in a presentable condition for the duration of the project. Hardware shall be galvanized. The surface of the sign shall be of exterior softwood plywood with medium density overlay.

Painting shall be constructed with materials to resist weathering and fading during the construction period. Experienced professionals shall perform painting. Graphic design and style shall be in accordance with the following:

- The signs will be placed in accordance with Manatee County Development Code, Ordinance 90-01, Section 724, Signs and Section 713, Visibility Triangles.

Payment for installing and maintaining the project identification signs shall be included as part of the lump sum quantity under Pay Item Number 1 (101-1) for Mobilization. The sign will remain the property of the Owner upon completion of the Project unless otherwise directed.

SPECIAL TERMS AND CONDITIONS

Soil Erosion and Siltation

The Contractor shall plan and control the Work to minimize all soil erosion and the siltation of drains and canals resulting from such erosion.

At the pre-construction meeting, the Contractor shall present his proposed plan and schedule, which shall specifically indicate the proposed use of temporary erosion control features. The plan shall include all items necessary to control sediment from leaving the site. The contractor shall reference the **State of Florida Erosion and Sediment Control Designer and Reviewer Manual**, latest edition, prepared for the **Florida Department of Transportation & Florida Department of Environmental Protection**. This document can be found on the FDOT Publications website.

Shop Drawings

The Contractor shall submit to the Engineer for approval, all working drawings and shop drawings with descriptive specifications and engineering calculations necessary for the successful completion of the Work.

The working and shop drawings shall be certified by a Florida licensed Professional Engineer and state that the design is sufficient for the successful completion of the Work. The working drawings and shop drawings shall include, but not be limited to:

- Traffic Control Plan
- Erosion Control Plan
- Shop Drawings listed in the Plans

Temporary Pavement

Temporary pavement shall consist of a minimum of Optional Base Group 04 and one (1) inch of Type SP structural course (Traffic C) over a firm, unyielding, well-compacted subgrade. The Contractor shall immediately repair all potholes that develop within the project limits and shall maintain a supply of cold mix on the project site to expedite these repairs.

Payment for the temporary pavement and maintenance of this pavement shall be included under the optional base and Type SP structural course pay item.

DEWATERING, SHEETING AND BRACING

Payment for dewatering, sheeting and bracing shall be included in the applicable pay items unless separate pay items are specified.

Approval of Dewatering Plan:

At least 10 days prior to the commencement of any dewatering activity, the Contractor shall submit to the Project Manager for record purposes only, a detailed description of the proposed dewatering system. This plan shall include design computations, layout, type, and spacing of dewatering devices, number and size of pumps and other equipment, with a description of the installation and operating procedures.

MAINTENANCE OF TRAFFIC

The Contractor shall provide access to businesses and local residents at all times. Business Entrance signs per FDOT Index 17355 (FTP-59) shall be placed at all business entrance points and maintained during all phases of construction. Payment for these items shall be included under the pay item for Maintenance of Traffic.

MAINTENANCE OF TRAFFIC PLAN

The Contractor shall prepare a Maintenance of Traffic plan and submit it to the Engineer and the Project Manager for review prior to implementation. It must comply with all FDOT safety criteria, FDOT Design Standards 600 Series Indexes, FHWA and MUTCD standards, and allow for traffic to operate in daytime or nighttime. The Maintenance of Traffic plan will require the seal of a licensed professional engineer with a current FDOT Advanced Work Zone certification. No road closures will be allowed without approval from the Engineer.

MAINTENANCE OF STORM DRAINAGE SYSTEM

The Contractor shall be responsible at all times to maintain the operation of existing stormwater facilities, or, when existing stormwater facilities are removed, to provide equivalent capacity alternate forms of stormwater removal adequate to prevent upstream flooding in excess of existing conditions. This responsibility shall include the installation of temporary connections, bypass pumping, or other temporary means necessary until the new drainage system is fully operational. Payment for these items shall be included under the applicable pay item.

SIDEWALKS TO REMAIN OPEN

Existing sidewalks and proposed sidewalks completed during construction shall remain open at all times unless approved otherwise by the Engineer. Temporary sidewalk shall be constructed as shown in the plans or as required to maintain pedestrian movement. Payment for these items shall be included under the lump sum pay item for Maintenance of Traffic.

DUST CONTROL

The Contractor shall control dust resulting from construction operations at all times. The locations and frequencies of applications shall be as directed by the Engineer. Dust control is required to be in accordance with the FDOT *Standard Specifications* Section 102-5. Payment for Dust Control shall be made under Mobilization unless separate pay item for Dust Control is specified.

UNDERGROUND UTILITY LOCATIONS

The Contractor shall field verify by means of subsurface locating or other approved method all existing utilities to remain and conditions as may be required for the work area. This shall include all areas of potential conflicts with proposed storm, sanitary, force main and water main. The Contractor shall locate all existing utilities to remain at potential conflict locations prior to construction activities and before ordering any proposed structures. The Contractor shall contact and coordinate with "Sunshine" as well the individual utilities prior to and during construction for utility locations, relocation and assistance while installing in potential conflict areas. All utility coordination and relocations shall be factored into the Contractor's construction schedule at no additional cost to the Owner.

The cost of all labor, materials and incidentals required for the performance of any survey and utility location work shall be included under the pay item for Mobilization. A Florida registered land surveyor shall perform all survey work.

UTILITY COORDINATION

The Contractor shall be responsible for coordination of the work with all affected utility owners. The Contractor must take into consideration the required utility adjustments and relocations in development of his schedule for completing the work including construction of temporary work to allow phased construction of the permanent facilities.

The Contractor shall coordinate and schedule utility relocations and/or adjustments with the utility owners along the project in order to avoid delays. The work includes remobilization if required after utility relocation is complete. The intent is to coordinate utility construction activities so the project construction continues and is not stopped or delayed at any time due to utility work being done. Once Notice to Proceed is issued, the Contractor shall contact the affected utilities to discuss the Contractor's anticipated means and methods so temporary and permanent relocation plans can be implemented as needed to meet OSHA safety requirements.

Payment for Utility Coordination shall be included under the lump sum Bid Item Number 3, Utility Coordination.

UTILITY CONFLICTS

It shall be the Contractor's responsibility to avoid conflicts with other utilities. The Owner will not be responsible for additional costs incurred by the Contractor for incorrect installations, relocations and breaks due to service conflicts.

DAILY CLEAN-UP REQUIREMENTS

The Contractor shall clean up the job site at the end of each workday. Clean up will include the elimination of rubble and waste material on public and private property. Driveways shall remain accessible by residents. Each Friday, the Contractor shall prepare the road surface and barricades in an acceptable manner for weekend traffic use.

MAINTENANCE AND RESTORATION OF JOB SITE

The Contractor shall conduct his operations in such a manner as will result in a minimum of inconvenience to occupants of adjacent homes and business establishments and shall provide temporary access as directed or as may be required by the Project Manager. All final restoration must be performed to an equal or better condition than that which existed prior to construction.

Good housekeeping on this project is extremely important and the Contractor will be responsible for keeping the construction site neat and clean, with debris being removed daily as the work progresses or as otherwise directed by the Project Manager. Good housekeeping at the job site shall include: Removing all tools and temporary structures, dirt, rubbish, etc.; hauling all excess dirt, rock, etc., from excavations to a dump provided by the Contractor; and all clean up shall be accomplished to the satisfaction of the Project Manager. Dust will be controlled daily as may be required. Immediately after construction completion in an area or part thereof (including restoration), barricades, construction equipment and surplus and discarded materials shall be removed by the Contractor.

In the event that the timely clean up and restoration of the job site is not accomplished to the satisfaction of the Project Manager, the Project Manager shall make arrangements to affect the necessary clean up by others. The Contractor shall be charged for these costs through deductions in payment due the contractor. If such action becomes necessary on the part of and in the opinion of the Project Manager, the Owner shall not be responsible for the inadvertent removal from the work site of materials which the Contractor would not normally have disposed of had he affected the required clean up.

NOTICE AND SERVICE THEREOF

All notices, which shall include demands, instructions, requests, approvals, and claims shall be in writing. Any notice to or demand upon the Contractor shall be sufficiently given if delivered to the office of the Contractor specified in the bid (or to such other office as the Contractor may, from time to time, designate to the Owner in writing), or if deposited in the United States mail in

a sealed, postage prepaid envelope, or delivered, with charges prepaid, sent via fax transmission, or to any telegraph company for transmission, in each case addressed to such office.

All notices required to be hand delivered to the Owner, unless otherwise specified in writing to the Contractor, shall be delivered to the Project Manager, and any notice to or demand upon the Owner shall be sufficiently given as delivered to the office of the Project Manager, or if deposited in the United States mail in a sealed, postage prepaid envelope, sent via fax transmission, or delivered with charges prepaid to any telegraph company for transmission, in each case addressed to said Project Manager or to such other representative of the Owner or to such other address as the Owner may subsequently specify in writing to the Contractor for such purposes.

Any such notice or demand shall be deemed to have been given or made as of the time of actual delivery or (in the case of mailing) when the same should have been received in due course of post or in the case of a fax transmission or telegram at the time of actual receipt, as the case may be.

REQUIREMENTS FOR CONTROL OF THE WORK

Prior to the start of the Work described in this contract, a pre-construction conference may be held by the Project Manager to be attended by the Contractor and representatives of the various utilities and others as required, for the purpose of establishing a schedule of operations which will coordinate the work to be done under this contract with all related work to be done by others within the limits of the project.

All items of work in this contract shall be coordinated so that progress of each related item will be continuous from week to week. The progress of the work will be reviewed by the Project Manager at the end of each week, and if the progress of any item of work during that week is found to be unsatisfactory, the Contractor shall be required to adjust the rate of progress on that item or other items as directed by the Project Manager without additional compensation. The Contractor will continuously control the work until completed.

PROJECT SCHEDULE

The Contractor shall submit a detailed construction bar chart schedule within 15 days of the notification of award or its intent for the County to review. The submittal shall meet the following requirements:

- Schedule will be submitted on 11-inch by 17-inch paper.
- The time scale (horizontal) shall be in weeks. The activities shall be listed on the left hand side (vertical).
- Activities shall show most Work activities. The listing from top to bottom shall be in a logical sequence of how the Work will be accomplished. Space shall be provided between activities or within bars to allow for marking of actual progress.

A copy of the schedule, clearly showing progress made, shall be submitted on a monthly basis during the progress of the work. Review or acceptance will neither impose on the County responsibility for the progress or scheduling of the Work, nor relieve the Contractor from full responsibility therefore.

The Contractor shall provide a revised Work schedule if, at any time, the County considers the completion date to be in jeopardy because of “activities behind schedule”. An activity that cannot be completed by its original or latest completion date shall be deemed to be behind schedule. The revised Work schedule is designed to show how the Contractor intends to accomplish the Work to meet the contractual completion date. The form and method employed by the Contractor shall be the same as for the original Work schedule.

The cost to prepare and revise the schedule is considered incidental to the Work.

USE OF PRIVATE PROPERTY

All construction activities required to complete this project in accordance with the Contract Documents shall be confined to public right-of-way, easements of record or temporary construction easements, unless the Contractor makes specific arrangements with private property owners for his use of their property. Written authorization from the granting property owner shall be placed on file with the Project Manager prior to utilization of said private properties. The Owner assumes no responsibility for damage to private property in such instances. The Contractor is responsible for protection of private property abutting all work areas on this project. Adequate equipment storage and material storage shall also be accomplished outside the Owner’s right-of-way. Pipe and other materials shall not be strung out along the right-of-way, but will be delivered in quantities adequate for one day’s installation. The Owner will coordinate with the Contractor to identify possible storage sites.

CONSTRUCTION PHOTOGRAPHY

General

The Contractor shall employ a competent photographer to take construction record photographs and perform videotaping, including providing all labor, materials, equipment and incidentals necessary to obtain photographs and/or videotapes of all areas specified in the Contract specifications.

The word “Photograph” includes standard photographic methods involving negatives, prints and slides and it also includes digital photographic methods involving computer technology items such as diskettes and CD-ROMs.

Qualifications

A competent camera operator who is fully experienced and qualified with the specified equipment shall do all photography.

For the videotape recording, the audio portion should be done by a person qualified and knowledgeable in the specifics of the Contract, who shall speak with clarity and diction so as to be easily understood.

Project Photographs

Provide photographs of the entire work area prior to any construction for the purpose of records of conditions prior to construction. Photographs should be spaced at approximately 100-foot intervals. In addition, all special features shall be photographed prior to construction.

Provide three prints of each standard photograph to the Owner. In addition to the CD-ROM media, provide one print of each digital/digitized photograph to the Owner.

The Contractor shall pay all costs associated with the required photography and prints. Any parties requiring additional photography or prints will pay the photographer directly.

All project photographs shall be a single weight, color image. All finishes shall be smooth surface and glossy, and all prints shall be 8 inches by 10 inches.

Each print shall have clearly marked on the back the name of the project, the orientation of view, the date and time of exposure, name and address of photographer and the photographers numbered identification of exposure.

All project photographs shall be taken from locations to adequately illustrate conditions prior to construction, or conditions of construction and state of progress. The Contractor shall consult with the Owner at each period of photography for instructions concerning views required.

The Contractor shall deliver prints in conformance with the above requirements to the Owner. No construction shall begin until pre-construction photographs are completed and submitted to the Owner.

Negatives

The Contractor shall require that photographer maintain negatives for a period of two years from date of Substantial Completion of the Project. Negatives shall be conveyed to Owner at the end of the two-year period.

Photographer shall agree to furnish additional prints to Owner at commercial rates applicable at the time of purchase. Photographer shall also agree to participate as required in any litigation requiring the photographer as expert witness.

Videotape Recording

Videotaping may be used in lieu of construction photographs.

Videotaping shall be accomplished along all routes that are scheduled for construction.

The taping shall, when viewed, depict an image with $\frac{1}{4}$ of the image being the roadway fronting of property and $\frac{3}{4}$ of the image being of the property. The taping shall be done so as to show the roadway and property in an oblique view (30 degrees).

A complete view, in sufficient detail, of all driveways, with audio description of the exact location shall be provided.

The Engineering plans shall be used as a reference for stationing in the audio portion of the tapes for easy location identifications. If visible, house numbers shall be mentioned on the audio.

Two complete sets of videotapes shall be delivered to the Owner for the permanent and exclusive use of the Owner prior to the start of any construction on the project.

All videotapes shall contain the name of the project, the date and time of the videotaping, the name and address of the photographer and any other identifying information required.

Payment for this item shall be included under the pay item for Mobilization.

POST-CONSTRUCTION STORM PIPE TESTING

The Contractor shall inspect and televise all newly constructed storm pipes on the project. The purpose is to assure the pipes are properly constructed and do not leak at the joints. Payment for this item shall be included under the pay item for Mobilization.

CONTRACTOR TO EXECUTE NPDES “NOTICE OF INTENT”

Prior to proceeding with construction, the Contractor shall prepare and submit a “Notice of Intent to Use Generic Permit for Stormwater Discharge from Construction Activities that Disturb One or More Acres of Land” to the Florida Department of Environmental Protection (FDEP). The Contractor shall monitor the site at all times and take appropriate action to prevent erosion including the use of BMPs. No pumping of ground or surface water shall be performed without approval from the Water Management District. Following completion of construction, Contractor shall prepare and submit a “Notice of Termination of Generic Permit Coverage” to FDEP. Payment for this item shall be included under the pay item for Mobilization.

WORKSITE TRAFFIC SUPERVISOR

- a. The Contractor shall have a Worksite Traffic Supervisor who will be responsible for initiating, installing and maintaining all traffic control devices as described in Section 102 of the *FDOT Standard Specifications for Road and Bridge Construction* and in the Plans. The Worksite Traffic Supervisor shall have at least one year of experience directly related to work site traffic control in a supervisory or responsible capacity and shall be certified by the American Traffic Safety Services Association Worksite Traffic Supervisor Certification Program or an equal approved by FDOT. Approved alternate Worksite Traffic Supervisors may be used when necessary.
- b. The Worksite Traffic Supervisor shall be available on a 24-hour per day basis and shall review the project on a day-to-day basis as well as being involved in all changes to traffic control. The Worksite Traffic Supervisor shall have access to all equipment and materials needed to maintain traffic control and handle traffic related situations. The Worksite Traffic Supervisor shall ensure that routine deficiencies are corrected within a 24-hour period.
- c. The Worksite Traffic Supervisor shall be available on the site within 45 minutes after notification of an emergency situation, prepared to positively respond to repair the work zone traffic control or to provide alternate traffic arrangements.

- d. Failure of the Worksite Traffic Supervisor to comply with the provisions of the Sub-article may be grounds for decertification or removal from the project or both. Failure to maintain a designated Worksite Traffic Supervisor or failure to comply with these provisions will result in temporary suspension of all activities except traffic and erosion control and such other activities deemed to be necessary for project maintenance.
- e. Payment for Worksite Traffic Supervisor shall be included under the pay item for Maintenance of Traffic.

CONTRACTOR'S SUPERVISION

- a. Prosecution of Work: The Contractor shall give the work the constant attention necessary to assure the scheduled progress. He shall cooperate fully with the Engineer and with other Contractors at work in the vicinity.
- b. Contractor's Superintendent: The Contractor shall at all times have on the work site as his agent, a competent superintendent capable of thoroughly interpreting the plans and specifications and thoroughly experienced in the type of work being performed, who shall receive the instructions from the Engineer or his authorized representatives. The superintendent shall have full authority to execute the orders or directions of the Engineer and to supply promptly any materials, tools, equipment, labor and incidentals that may be required. Such superintendence shall be furnished regardless of the amount of work sublet.
- c. The Contractor's superintendent shall speak and understand English, and at least one responsible person who speaks and understands English shall be on the project during all working hours.
- d. Supervision for Emergencies: The Contractor shall have a responsible person available at or reasonably near the work site on a 24-hour basis, 7 days a week, in order that he may be contacted for emergencies and in cases where immediate action must be taken to maintain traffic or to handle any other problem that may arise. The Contractor's responsible person for supervision for emergencies shall speak and understand English. The Contractor shall submit, by certified mail, phone numbers and names of personnel designated to be contacted in cases of emergencies along with a description of the project location to the Florida Highway Patrol and all other local law enforcement agencies.

LIST OF EMERGENCY CONTACT NUMBERS & UTILITY SERVICE MAINTENANCE

The Contractor shall obtain and maintain a list of emergency contact phone numbers for all utilities during the course of the project. The Contractor shall maintain utility service during the project except for interruptions authorized by the utility owner. If interruptions are required, the Contractor shall notify the Owner 48 hours in advance.

EXISTING SIDEWALK

If the Contractor, in the process of performing his contract operations, breaks any of the existing sidewalk that is to remain in place, replacement of this sidewalk will be at the Contractor's expense.

PEDESTRIAN ACCESS

The Contractor shall provide access and make provisions to maintain school zones during construction. The Contractor is to facilitate pedestrian traffic whether for school or public transportation.

RECORD DRAWINGS AND PROJECT CERTIFICATION

This section and number of copies applies only to roadway and drainage record drawings.

The Owner and/or Engineer will furnish the Contractor copies of the bid plans to be used for the record drawings. A Florida Registered Surveyor shall perform a field survey and any differences between the plan elevations or dimensions shall be marked through and the as-built elevation or dimension legibly entered. All elevations and dimensions that are correct shall have a check mark placed beside it.

The Contractor shall keep a complete set of surveyed "As-built" records. These records shall show all items of Work and existing features of utilities revealed by excavation work. The records shall be kept in a professional manner, in a form that shall be approved by the County prior to the Work. These results shall be available at all times during construction for reference by the Engineer and shall be delivered to the Engineer upon completion of the Work. All completed "As-builts" must be certified by a Florida Licensed Surveyor or Engineer per Chapter 61 G 17-6, Florida Administrative Code, pursuant to Sec. 47207, Florida Statutes. At a minimum all Utility Record Drawings shall be in accordance with Manatee County Standards.

The following information is required on the "Record Drawings":

- A. Roadway centerline profile [100-foot maximum interval].
- B. Roadway cross sections [100-foot maximum interval].
- C. All underground piping with elevations and dimensions, changes to piping locations, horizontal and vertical locations of underground utilities and appurtenances referenced to permanent surface improvements. Actual installed pipe material, class, etc. Dimensions at these locations shall indicate distance from the centerline of construction.
- D. Elevations on all drainage control structures, verifying all plan dimensions.
- E. Stormwater ponds with cross sections [25-foot maximum interval] (sufficient to calculate volumes).
- F. Flow line elevations on all ditch breaks (vertical and horizontal).
- G. Field changes of dimensions and details.
- H. Details not on original contract drawings.
- I. Equipment and piping relocations.
- J. The locations of all headwalls, pipes and any other structures shall be located by station and offset.
- K. Benchmarks and elevation datum shall be indicated.
- L. Additional elevations or dimensions as required by the Engineer

Following completion of construction and prior to final payment, the Contractor shall submit a Certification by the Contractor and Manufacturer including test data that the materials (filter fabric, filter media, etc.) installed meet plan specifications and regulatory requirements.

Upon completion of the work, four (4) sets of draft "Record Drawings" shall be submitted to the Owner for review. Such drawings shall accurately show all approved field changes to the original Construction Drawings, including actual locations, dimensions and elevations and shall be subject to a field review in the presence of the Engineer or his designated representative. The drawings are to be prepared by competent personnel, neatly drafted and certified, signed and sealed by a Florida Registered Surveyor.

The Contractor shall incorporate any comments from the Owner and/or Engineer and shall submit two write-only CD-ROMs, one set of 24-inch by 36-inch mylar record drawings and four sets of 24-inch by 36-inch certified prints with the Surveyor's certification.

All Digital Drawings shall be identical to those submitted as hard copy. The Digital Drawing files shall be AutoCAD format (Release 2004 or later) and shall include all external reference drawings, text fonts, shape files and all other files necessary to make use of the drawings.

In addition, \$25,000 or five percent (whichever is smaller) of the Contract price shall be retained until the Owner has approved the "Record Drawings". The Owner and/or Engineer will review and approve the "Record Drawings" within 30 days unless additional information is required. No final payment shall be made until such time as the "Record Drawings" have been approved and accepted.

COMPLIANCE WITH THE SOUTHWEST FLORIDA WATER MANAGEMENT DISTRICT (SWFWMD) STORMWATER MANAGEMENT AND DISCHARGE PERMIT REQUIREMENTS AND/OR THE DEPARTMENT OF ENVIRONMENTAL PROTECTION (DEP) DREDGE AND FILL PERMIT REQUIREMENTS

Southwest Florida Water Management District Stormwater Management and Discharge permits or exemptions, if any, and/or a Department of Environmental Protection Dredge and Fill permit, if any, required for this project have been obtained by the Owner. The Contractor shall comply with the stipulations of the Permits or Exemptions as stated herein.

The Contractor shall allow periodic inspection of the work by authorized representatives of the Department of Environmental Protection, the Southwest Florida Water Management District, as well as other duly authorized law enforcement officers of the State.

MATERIAL TESTING TABLE

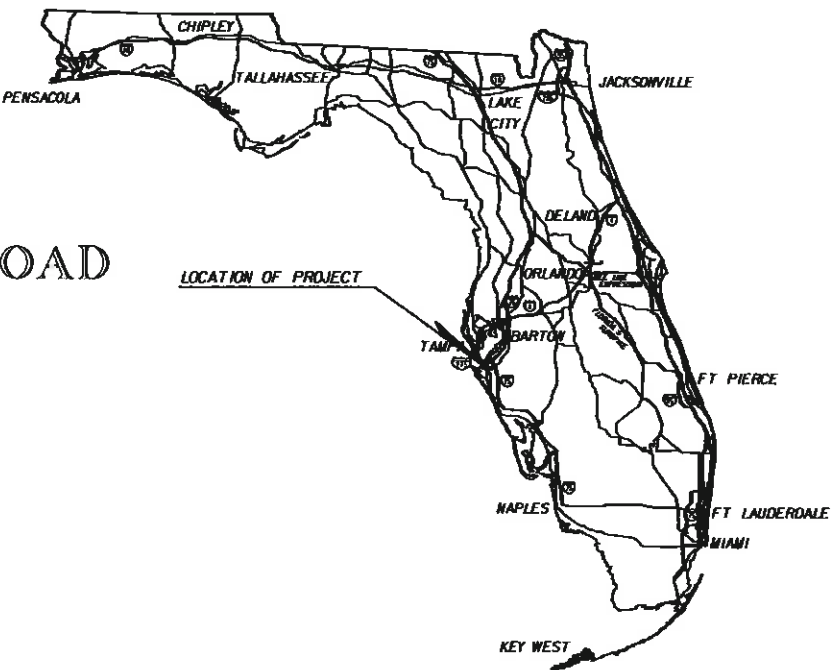
ITEM	TEST	TEST IDENTIFICATION	TEST REQUIREMENTS VERTICAL	TEST FREQUENCY HORIZONTAL
UTILITY TRENCH BACKFILL	MAXIMUM DENSITY OPTIMUM MOISTURE	AASHTO T-180	N/A	PER SOIL CLASSIFICATION/ PER LABORATORY ONE PER 200 LF
	FIELD DENSITY	AASHTO T-310	PER PLANS	
SUBGRADE UNCLEAR NEW CURB	MAXIMUM DENSITY OPTIMUM MOISTURE	AASHTO T-180	N/A	PER SOIL CLASSIFICATION/ PER LABORATORY ONE PER 200 LF
	FIELD DENSITY	AASHTO T-310	PER PLANS	
LIMEROCK/ SHELL BASE	MAXIMUM DENSITY OPTIMUM MOISTURE	AASHTO T-180	N/A	PER SOIL CLASSIFICATION/ PER LABORATORY ONE PER 200 LF
	FIELD DENSITY	AASHTO T-310	PER PLANS	
SOIL CEMENT BASE	SOIL CEMENT PLACEMENT/ MONITORING DENSITIES THICKNESS DETERMINATIONS	AASHTO T-134 AND AASHTO T-135	PER PLANS	ONE PER 200 LF
CONCRETE	COMPRESSIVE STRENGTH (THREE CYLINDERS/TEST)	AASHTO T-22	PER SPECS	PER SPECS/MIN. OF ONE SET/DAY FOR POURS BETWEEN 10 & 50 CY
	SLUMP, AIR CONTENT	AASHTO T-119 AND AASHTO T-152	PER SPECS	ADDITIONAL SET FOR EACH 50 CY DAILY OR 1 PER 50 CY MAX
ASPHALT	MATERIAL QUALITY GRADATION, STABILITY BITUMEN CONTENT	FLORIDA D.O.T.	PER SPECS	PER SPECS DAILY OR MORE THAN 500 TONS
RECYCLED CONCRETE BASE	GRADATION DENSITIES THICKNESS DETERMINATIONS	AASHTO T-180 AASHTO T-27 AASHTO T-310	PER SPECS	PER SOIL CLASSIFICATION/ PER LABORATORY ONE PER 200 LF

METHOD OF MEASUREMENT AND BASIS OF PAYMENT

Payment for authorized work shall be per Division I Section 9 of the 2015 Standard Specifications.

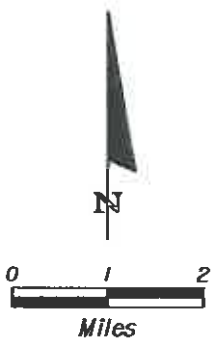
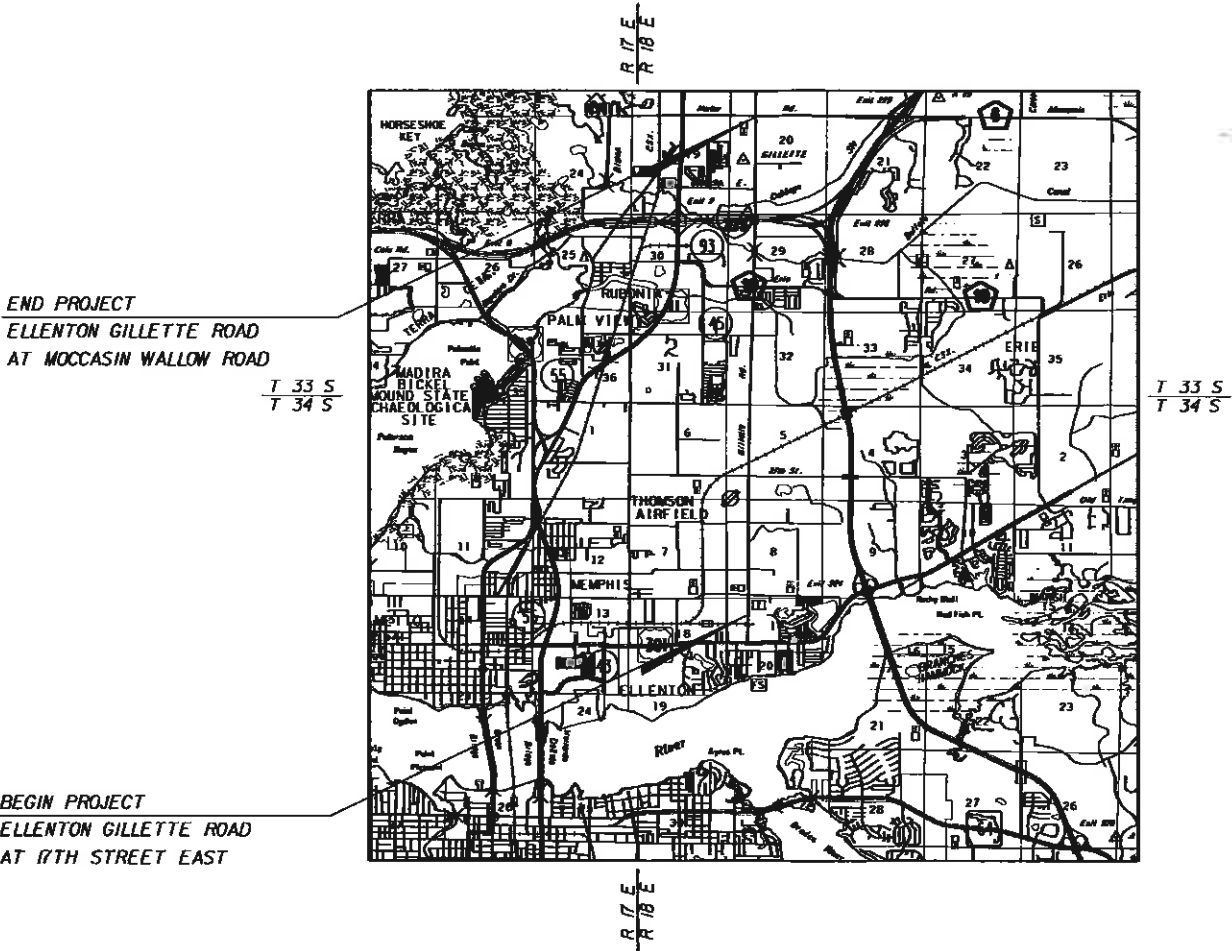
INTERCONNECT PLANS

ELLENTON GILLETTE ROAD FROM
17TH STREET EAST TO MOCCASIN WALLOW ROAD
MANATEE COUNTY
PROJECT NUMBER 6084560



INDEX OF INTERCONNECT PLANS

SHEET NO.	SHEET DESCRIPTION
T-1	KEY SHEET
T-2 - T-3	TABULATION OF QUANTITIES
T-4	GENERAL NOTES AND PAY ITEM NOTES
T-12 - T-15 - T-14 - T-13	INTERCONNECT PLAN
T-15	SPLICE DETAIL
T-16	NETWORK DIAGRAM



INTERCONNECT SHOP DRAWINGS
TO BE SUBMITTED TO:
GERARDO TRAVERSO, PE
GRIMAIL CRAWFORD, INC.
4600 WEST CYPRESS STREET
SUITE 550
TAMPA, FLORIDA 33607
(813) 387-0084

PLANS PREPARED BY:
GRIMAIL CRAWFORD, INC.
4600 WEST CYPRESS STREET
SUITE 550
TAMPA, FL 33607
(813) 387-0084
CONSULTANT VENDOR NO. F-593601236

FBPR CERTIFICATION OF AUTHORIZATION NO. 8370

NOTE: THE SCALE OF THESE PLANS MAY
HAVE CHANGED DUE TO REPRODUCTION.

GOVERNING STANDARDS AND SPECIFICATIONS;
FLORIDA DEPARTMENT OF TRANSPORTATION, DESIGN STANDARDS,
DATED 2015, AND DIVISIONS II AND III OF THE STANDARD
SPECIFICATIONS FOR ROAD AND BRIDGE CONSTRUCTION, DATED 2015,
AS AMENDED BY CONTRACT DOCUMENTS.

LOCATION MAP

SECTION 17, TOWNSHIP 34S, RANGE 18E


ATMS CONNECTION PLANS
ENGINEER OF RECORD: GERARDO TRAVERSO, PE

P.E. NO. 64229

FISCAL YEAR	SHEET NO.
15	T-1

TABULATION OF QUANTITIES

[illegible]

REVISIONS				 MANATEE COUNTY PUBLIC WORKS	TABULATION OF QUANTITIES	SHEET NO.
DATE	DESCRIPTION	DATE	DESCRIPTION			T-3
			GRIMAIL CRAWFORD, INC. 4600 W. Cypress Street, Suite 550 Tampa, FL 33607 (813) 387-0084 FBPR Certificate of Authorization No. 8370 ENGINEER OF RECORD: Gerardo Traverso, P.E. No. 64229			

GENERAL NOTES AND PAY ITEM NOTES:

1. AT LEAST FIVE (5) WORKING DAYS PRIOR TO BEGINNING CONSTRUCTION, THE CONTRACTOR SHALL CONTACT THE FOLLOWING PERSONNEL FOR NOTIFICATION OF SCHEDULED CONSTRUCTION OPERATIONS:

MANATEE COUNTY TRAFFIC OPERATIONS DIVISION
MR. AARON BURKETT (941) 708-7509

MANATEE COUNTY TRAFFIC ENGINEERING DIVISION
MR. VISHAL KAKKAD (941) 749-3502
2. THE CONTRACTOR MUST NOTIFY THE FOLLOWING PERSONNEL AT LEAST TWO (2) BUSINESS DAYS IN ADVANCE TO SCHEDULE THE FINAL INSPECTION:

FLORIDA DEPARTMENT OF TRANSPORTATION
MR. CARLOS CABRERA (941) 359-7317

MANATEE COUNTY TRAFFIC ENGINEERING DIVISION
MR. VISHAL KAKKAD (941) 749-3502
3. WHEN CONSTRUCTION IS COMPLETE, PROVIDE THREE (3) SETS OF "AS-BUILT" PLANS AND ONE COMPACT DISK (PDF FILES) TO:

MANATEE COUNTY
TRAFFIC ENGINEERING DIVISION
2101 47TH TERRACE EAST
BRADENTON, FL 34203
(ATTN: MR. VISHAL S. KAKKAD, PE, PTOE)

FLORIDA DEPARTMENT OF TRANSPORTATION (FDOT) DISTRICT 1
P.O. BOX 1249
801 N. BROADWAY AVE.
BARTOW, FL 33831
(ATTN: TRAFFIC OPERATIONS - OPERATIONS CENTER)

THE RECORD DRAWINGS MUST BE RECEIVED 48 HOURS PRIOR TO SCHEDULING THE FINAL INSPECTION.
4. ONE WEEK PRIOR TO BEGINNING OF THE INSTALLATION, THE CONTRACTOR SHALL NOTIFY THE ENGINEER IN CONJUNCTION WITH:

MANATEE COUNTY
PUBLIC WORKS DEPARTMENT
PROJECT MANAGEMENT DIVISION
1022 26TH AVENUE EAST
BRADENTON, FL 34208
PHONE: (941) 708-7510

MANATEE COUNTY
PUBLIC WORKS DEPARTMENT
TRAFFIC ENGINEERING DIVISION
2101 47TH TERRACE EAST
BRADENTON, FL 34203
PHONE: (941) 749-3502
5. THE MAINTAINING AGENCY IS:

MANATEE COUNTY
TRAFFIC OPERATIONS DIVISION
2404 12TH STREET COURT EAST
BRADENTON, FL 34208
6. WHEN CONSTRUCTION DEVIATES FROM APPROVED PERMIT PLANS INCLUDING POSSIBLE EASMENT, THE CONTRACTOR SHALL FURNISH TO THE COUNTY PROJECT MANAGER, IN CONJUNCTION WITH THE FLORIDA DEPARTMENT OF TRANSPORTATION, ONE SET OF "AS-BUILT" PLANS FOR FDOT RECORDS:

DEPARTMENT OF TRANSPORTATION
P.O. BOX 1249
801 N. BROADWAY AVE
BARTOW, FL 33831
(ATTN: TRAFFIC OPERATIONS - SIGNAL DESIGN)

MANATEE COUNTY
TRAFFIC DIVISION MANAGER
P.O. BOX 1000
BRADENTON, FL 34206-1000
7. EXTREME CARE SHALL BE TAKEN TO ENSURE THAT ALL CONSTRUCTION ELEMENTS ARE INSTALLED AS SHOWN IN THE PLANS WITHIN EXISTING RIGHT-OF-WAY.
8. THE CONTRACTOR SHALL WORK IN CONJUNCTION WITH THE MAINTAINING AGENCY TO COORDINATE UTILITY RELOCATION IF NECESSARY.
9. IN THE EVENT R/W OR IRRESOLVABLE UTILITY CONFLICTS PROHIBIT PLACEMENT ACCORDING TO THE PLANS, THE CONTRACTOR SHALL CONTACT TRAFFIC OPERATIONS ENGINEER AND/OR ENGINEER OF RECORD (EOR) TO OBTAIN A DESIGN VARIATION.

10. WORK ZONE TRAFFIC CONTROL:

A. MAINTAIN TRAFFIC CONTROL AS PER INDEXES (600 SERIES) IN THE FDOT ROADWAY TRAFFIC DESIGN STANDARDS BOOKLET DATED 2015.
B. THE CONTRACTOR SHALL BE RESPONSIBLE FOR ENSURING SAFE AND EFFICIENT OPERATION DURING CONSTRUCTION ACTIVITIES.
C. ANY LANE CLOSURE WILL BE COORDINATED WITH MANATEE COUNTY AND FDOT.
D. THE CONTRACTOR SHALL NOT CLOSE ANY TWO CONSECUTIVE SIDE STREETS OR MEDIAN OPENINGS IN ANY GIVEN PHASE. DRIVEWAYS SHALL NOT BE CLOSED WITHOUT PROVIDING UNOBSTRUCTED INGRESS AND EGRESS.
11. THE LOCATION OF UTILITIES SHOWN ON THE PLANS ARE BASED ON LIMITED INVESTIGATION TECHNIQUES AND SHOULD BE CONSIDERED APPROXIMATE ONLY. THE CONTRACTOR SHALL DETERMINE THE EXACT LOCATIONS OF ALL UTILITIES. EXISTING UTILITIES ARE TO REMAIN IN PLACE UNLESS OTHERWISE NOTED.
12. THE CONTRACTOR SHALL NOTIFY UTILITY OWNERS OF ANY EXCAVATION OR DEMOLITION ACTIVITY THROUGH SUNSHINE ONE CALL OF FLORIDA INC. (1-800-432-4770) AND SHALL ALSO NOTIFY THOSE UTILITY OWNERS/AGENCIES LISTED WITHIN OR IMPACTED BY THESE PLANS, NOT LESS THAN TWO (2) FULL BUSINESS DAYS IN ADVANCE OF BEGINNING CONSTRUCTION ON THE JOB SITE.

UTILITY OWNERS:
PEACE RIVER ELECTRIC

MANATEE COUNTY (WATER & SEWER)


VERIZON

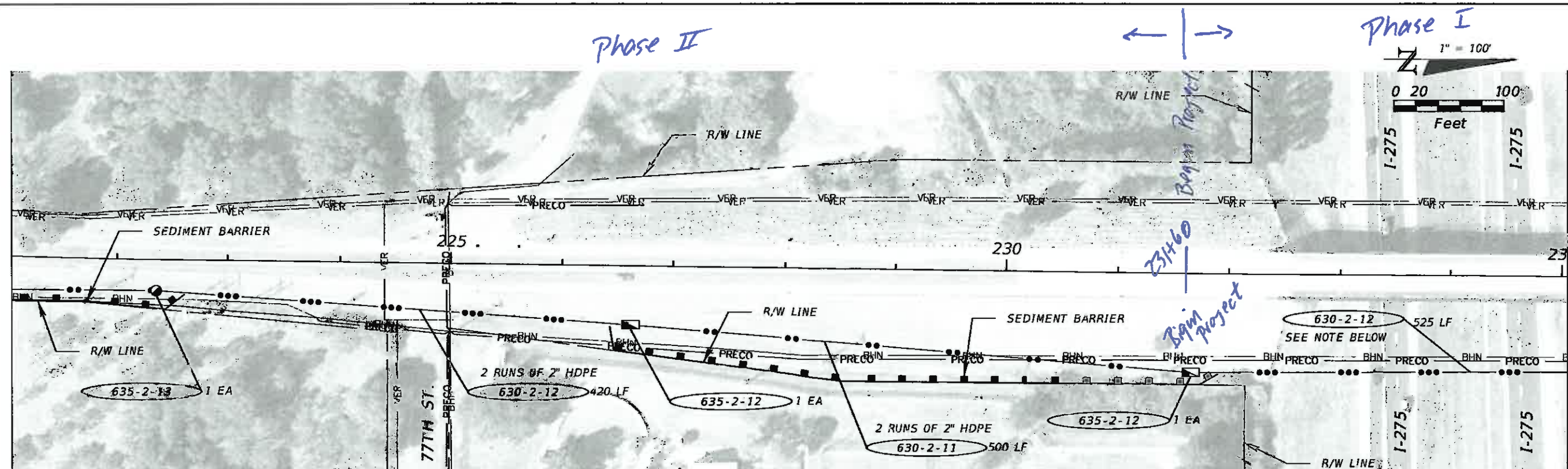
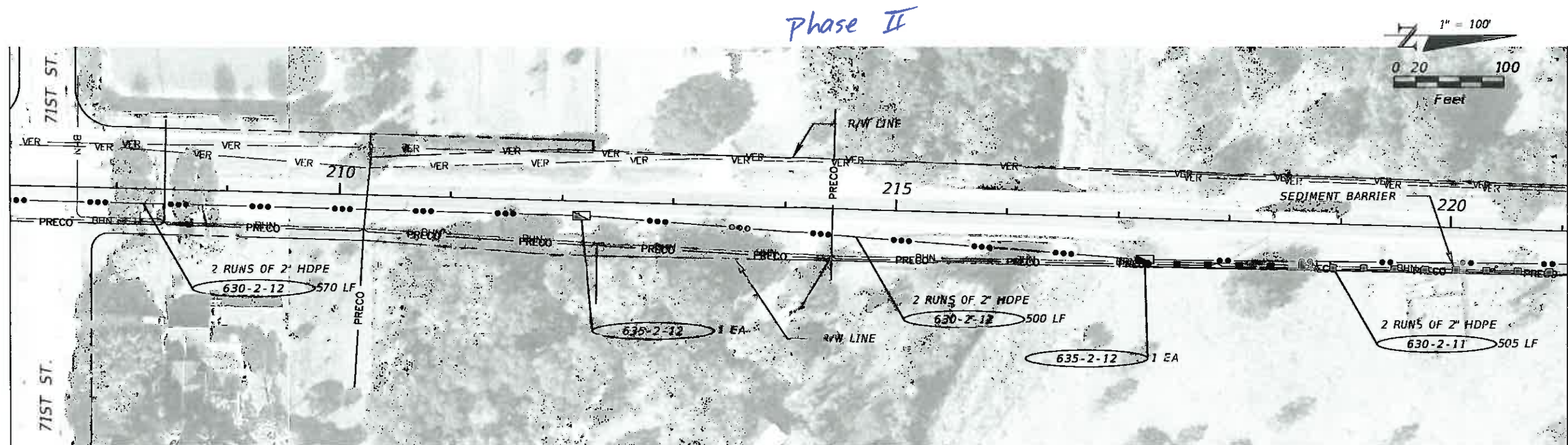
FLORIDA POWER & LIGHT (FPL)

BRIGHT HOUSE NETWORKS


TECO/PEOPLE'S GAS
13. THE CONTRACTOR SHALL HAND DIG THE FIRST 48 INCHES (4 FEET) OF THE HOLE FOR THE CONDUIT RUN WHERE UTILITIES ARE IN CLOSE PROXIMITY
14. IT SHOULD BE NOTED THAT NO TEST BORINGS WERE MADE WHERE CONDUIT RUNS ARE TO BE INSTALLED BY DIRECTIONAL BORING.
15. THE CONTRACTOR SHALL SUBMIT SHOP DRAWINGS FOR ALL EQUIPMENT AND MATERIALS TO THE FOLLOWING PERSONNEL FOR APPROVAL PRIOR TO ORDERING:

MANATEE COUNTY
TRAFFIC ENGINEERING DIVISION
2101 47TH TERRACE EAST
BRADENTON, FL 34203
(ATTN: MR. VISHAL S. KAKKAD)
(ATTN: ~~MS. EYRA CASH~~ *Michael L. Sturm, P.E.*)
16. THE CONTRACTOR SHALL PERFORM ALL WORK AS PER LATEST FLORIDA DEPARTMENT OF TRANSPORTATION (FDOT) SPECIFICATIONS AT TIME OF BID, INCLUDING THE LATEST DESIGN STANDARDS AND THE LATEST FDOT STANDARD SPECIFICATIONS WITH CURRENT SUPPLEMENTAL SPECIFICATIONS THERETO. WHEN FDOT AND MANATEE COUNTY SPECIFICATIONS DIFFER, THE MORE STRINGENT SPECIFICATION WILL TAKE PRECEDENCE. MANATEE COUNTY TRAFFIC SPECIFICATIONS SHALL BE OBTAINED BY THE CONTRACTOR FROM THE PROJECT MANAGEMENT DIVISION.
17. THE CONTRACTOR IS RESPONSIBLE FOR COORDINATING BOND REQUIREMENTS WITH JANE OLIVER, MANATEE COUNTY PUBLIC WORKS SENIOR ADMINISTRATIVE SPECIALIST, AT (941) 708-7450, EXT. 7275.
18. THE CONTRACTOR SHALL HAVE AN I.M.S.A. CERTIFIED LEVEL II (ELECTRONICS OR ELECTRICAL TECHNICIAN) ON THE JOB SITE AT ALL TIMES WHILE WORK IS BEING PERFORMED. ALL SIGNAL INSTALLATION TECHNICIANS SHALL HAVE A MINIMUM OF I.M.S.A. LEVEL I CERTIFICATION. CERTIFICATION OF ALL TECHNICIANS SHALL BE PROVIDED TO THE COUNTY PRIOR TO BEGINNING WORK.
19. UPON PROJECT COMMENCEMENT, THE SIGNAL CONTRACTOR SHALL PROVIDE CONTACT NUMBERS TO THE MANATEE COUNTY TRAFFIC OPERATIONS DIVISION.
20. ALL MATERIALS, EQUIPMENT, AND OTHER CONTRACTOR SUPPLIED ITEMS SHALL BE INSTALLED AND MAINTAINED ACCORDING TO THE MANUFACTURER'S RECOMMENDATIONS UNLESS SPECIFICALLY DIRECTED OTHERWISE BY MANATEE COUNTY.
21. PRIOR TO ORDERING MATERIALS, THE SIGNAL CONTRACTOR SHALL CONTACT THE TRAFFIC OPERATION DIVISION TO VERIFY CURRENT COLOR CODES FOR SIGNAL CABLE AND TO VERIFY THAT ALL EQUIPMENT TO BE ORDERED COMPLIES WITH MANATEE COUNTY EQUIPMENT AND DESIGN REQUIREMENTS.

REVISIONS				 <div>MANATEE COUNTY PUBLIC WORKS</div>	GENERAL NOTES AND PAY ITEM NOTES	SHEET NO. T-4
DATE	DESCRIPTION	DATE	DESCRIPTION			
				GRIMAIL CRAWFORD, INC. 4600 W. Cypress Street, Suite 550 Tampa, FL 33607 (813) 387-0084 FBPR Certificate of Authorization No. 8370 ENGINEER OF RECORD: Gerardo Traverso, P.E. No. 64229		



NOTE: DIRECTIONAL BORE UNDER I-275 TO BE DONE PER
FDOT PERMIT #2015-H-194-8 APPROVED ON JAN. 16, 2015
AND SUBMITTED PLANS FOR THE PERMIT.

REVISIONS				<p>GRIMAIL CRAWFORD, INC. 4600 W. Cypress Street, Suite 550 Tampa, FL 33607 (813) 387-0084 FBPR Certificate of Authorization No. 8370 ENGINEER OF RECORD: Gerardo Traverso, P.E. No. 84229</p>	 <p>MANATEE COUNTY PUBLIC WORKS</p>	<p>INTERCONNECT PLAN</p>		<p>SHEET NO. T-12</p>
DATE	DESCRIPTION	DATE	DESCRIPTION					

CBrown

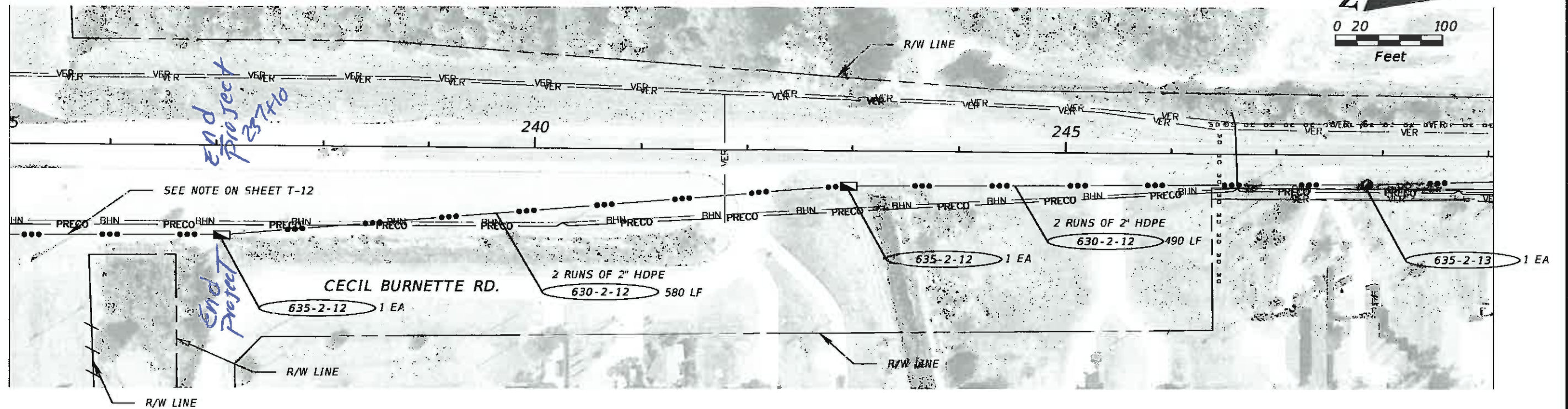
3/13/2015

10:30:25 AM

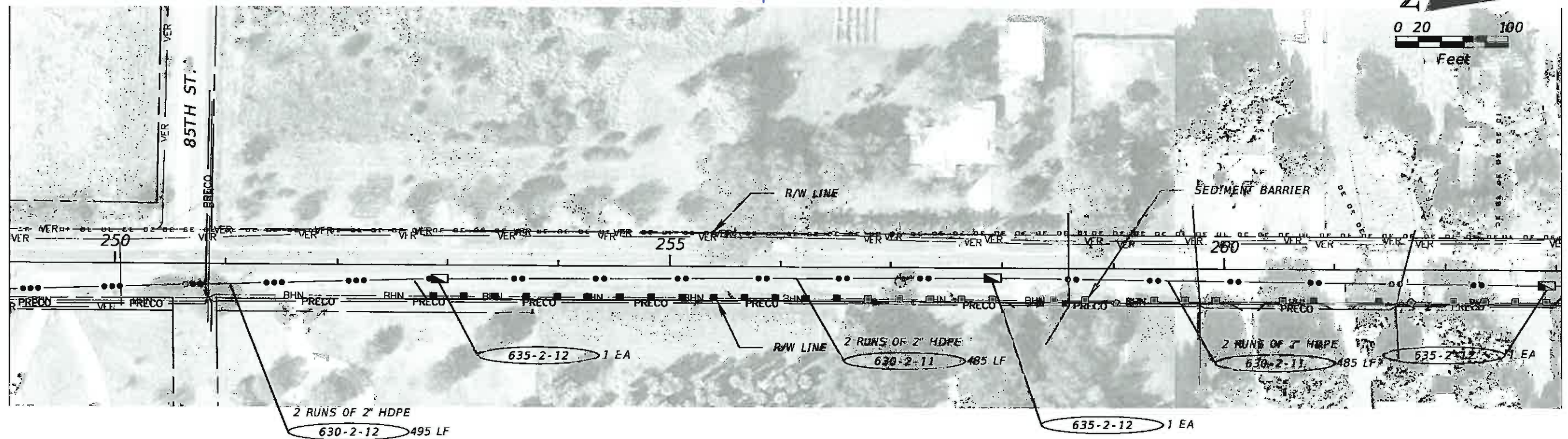
Q:\Private_Projects\CRO002_LFK\PH0215_Ellenton Gillette ATMS\9.00_DESIGN_DOCUMENTS\9.25_Misc_Design\plans\08.dgn


Phase I ← | →

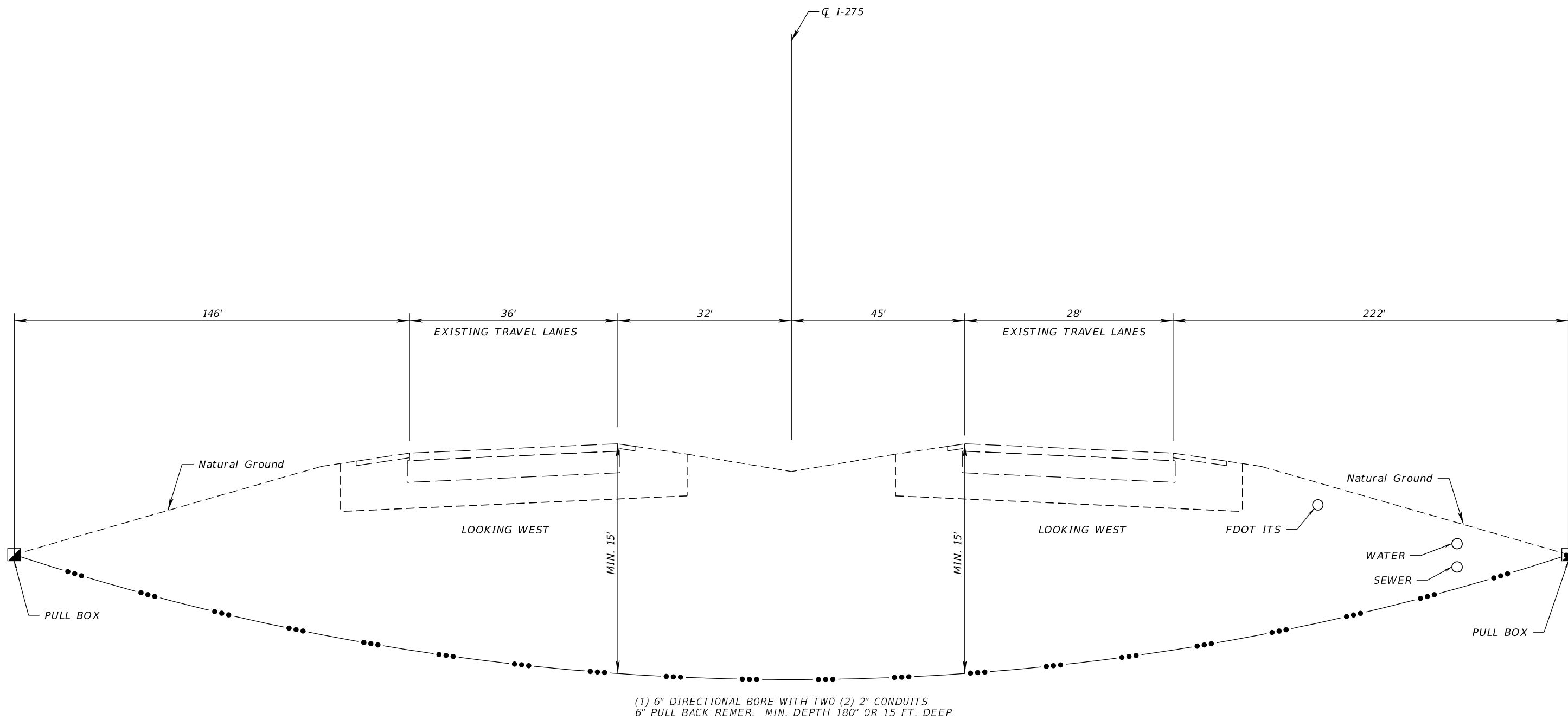
Phase II



Phase II



REVISIONS				<p>GRIMAIL CRAWFORD, INC. 4600 W. Cypress Street, Suite 550 Tampa, FL 33607 (813) 387-0084 FBPR Certificate of Authorization No. 8370 ENGINEER OF RECORD: Gerardo Traverso, P.E. No. 64229</p>	 <p>MANATEE COUNTY PUBLIC WORKS</p>	<p>INTERCONNECT PLAN</p>		<p>SHEET NO. T-13</p>
DATE	DESCRIPTION	DATE	DESCRIPTION					



TYPICAL SECTION
 SR I-275
 NTS