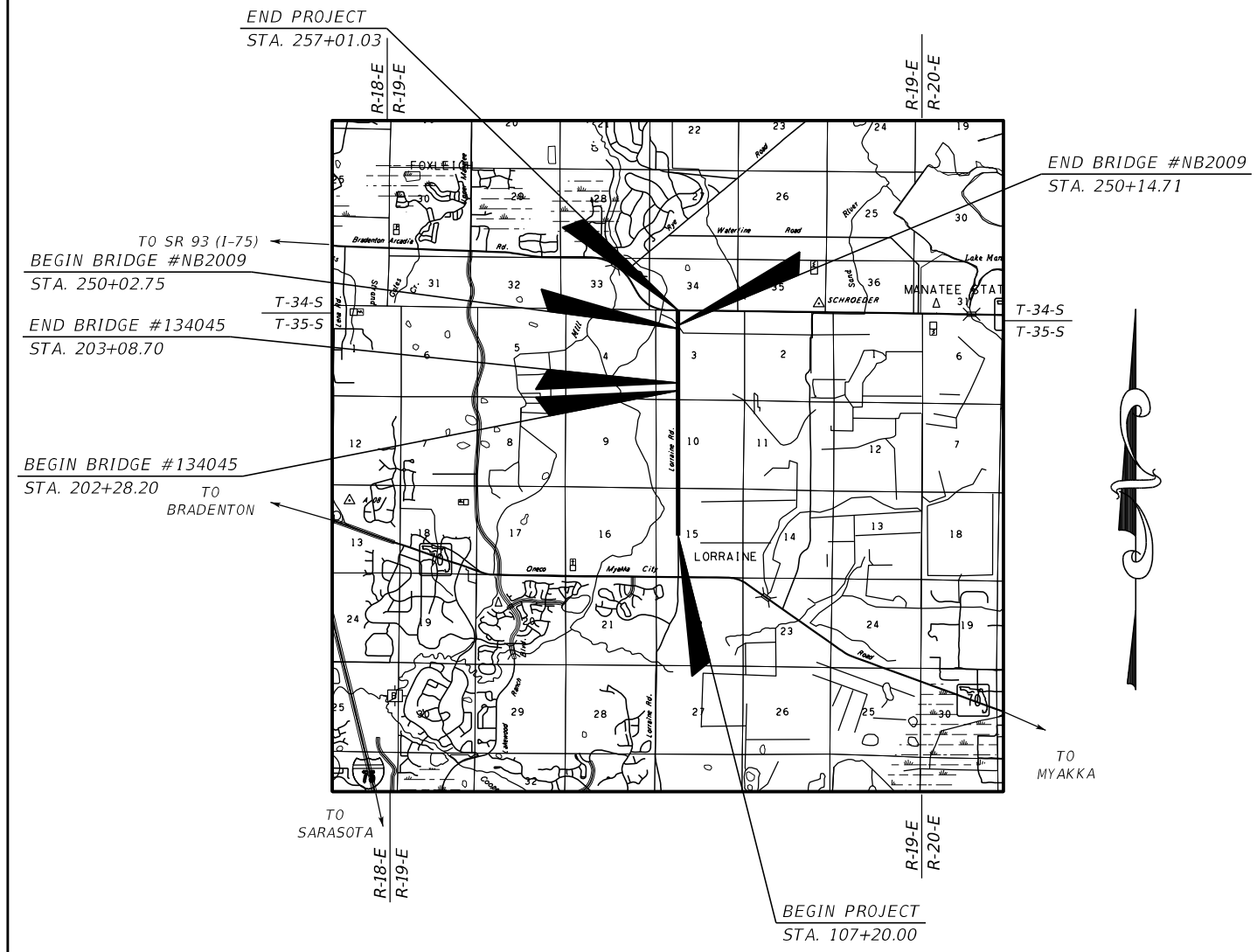


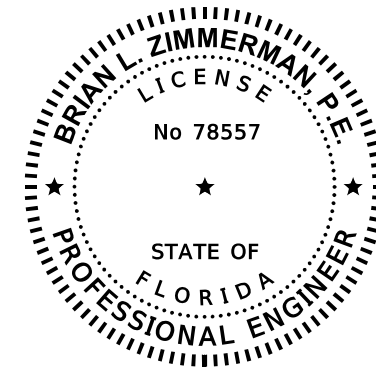
MANATEE COUNTY  
PUBLIC WORKS DEPARTMENT

TYPICAL SECTION PACKAGE

MANATEE COUNTY  
 PROJECT NUMBER 6107660  
 LORRAINE ROAD  
 FROM SOUTH OF 59TH CIRCLE/AVE EAST TO SR 64 ROUNDABOUT



APPROVED BY:



THIS ITEM HAS BEEN DIGITALLY SIGNED AND SEALED BY:

ON THE DATE ADJACENT TO THE SEAL  
 PRINTED COPIES OF THIS DOCUMENT ARE NOT CONSIDERED SIGNED AND SEALED. THE SIGNATURE MUST BE VERIFIED IN THE ELECTRONIC DOCUMENTS.

HDR ENGINEERING, INC.  
 4830 W KENNEDY BLVD., SUITE 400  
 TAMPA, FL 33609-2548

BRIAN L. ZIMMERMAN, P.E. NO. 78557

THE ABOVE NAMED PROFESSIONAL ENGINEER SHALL BE RESPONSIBLE FOR THE FOLLOWING SHEETS IN ACCORDANCE WITH RULE 61G15-23.004, F.A.C.

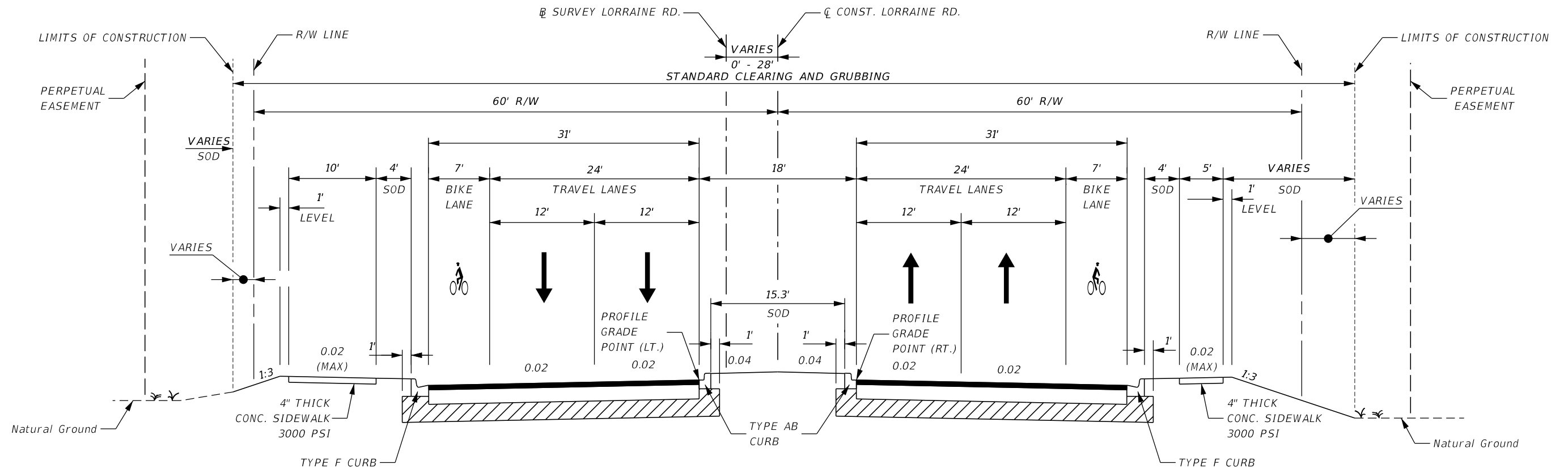
TYPICAL SECTION PACKAGE

SHEET NO	SHEET DESCRIPTION
1	COVER SHEET
2	TYPICAL SECTION NO. 1
3	TYPICAL SECTION NO. 2
4	TYPICAL SECTION NO. 3



COUNTY ENGINEER          CONCURRING WITH: TYPICAL SECTION ELEMENTS	SHEET NO.          1
---	--

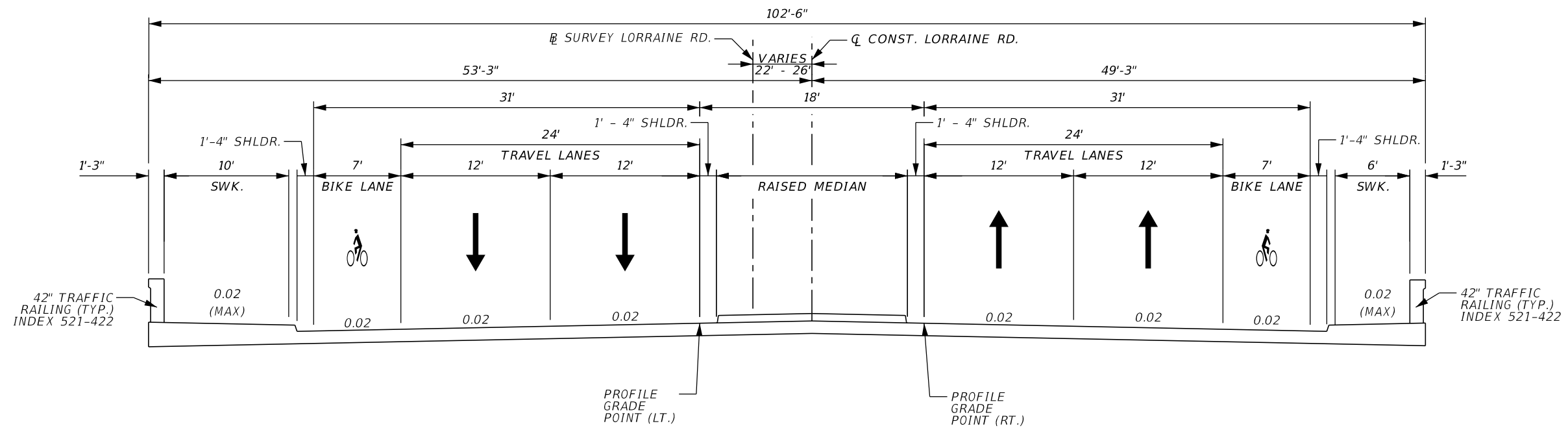
TYPICAL SECTION No. 1



LORRAINE RD.  
 STA. 107+20.00 TO STA. 202+28.20 (RT.)  
 STA. 108+33.55 TO STA. 202+28.20 (LT.)  
 STA. 203+08.70 TO STA. 250+02.75  
 STA. 250+14.71 TO STA. 257+01.03 (RT.)  
 STA. 250+14.71 TO STA. 256+76.17 (LT.)



SCALE AS NOTED DESIGNED BY BLZ DRAWN BY JMA CHECKED BY JLS				DATE 11/2022 PROJECT NO. 6107660		DESIGN ENGINEER BRIAN L. ZIMMERMAN FL. LICENSE NO. 78557		SHEET NO. 2
HDR ENGINEERING, INC. 4830 W KENNEDY BLVD, SUITE 400 TAMPA, FL 33609				MANATEE COUNTY PUBLIC WORKS		TYPICAL SECTION (1)		
No.	REVISIONS	DATE	BY					

TYPICAL SECTION No. 2

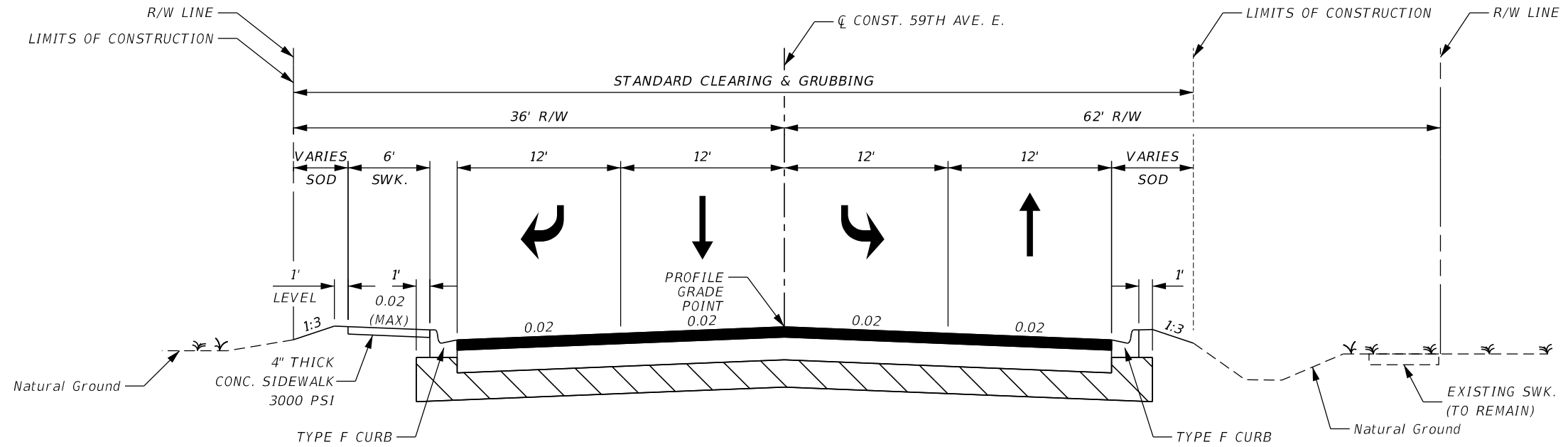


LORRAINE RD.  
 STA. 202+28.20 TO STA. 203+08.70 (BRIDGE #134045)  
 STA. 250+00.51 TO STA. 250+16.51 (BRIDGE NB2009)



APPROACH SLABS  
 STA. 201+89.20 TO STA. 202+28.20  
 STA. 203+08.70 TO STA. 203+38.70

No.	REVISIONS	DATE	BY	SCALE AS NOTED	 HDR ENGINEERING, INC. 4830 W KENNEDY BLVD, SUITE 400 TAMPA, FL 33609	DATE 11/2022	 MANATEE COUNTY PUBLIC WORKS	DESIGN ENGINEER BRIAN L. ZIMMERMAN	TYPICAL SECTION (2)	SHEET NO. 3
				DRAWN BY JMA		PROJECT NO. 6107660		FL. LICENSE NO. 78557		
				CHECKED BY JLS						

TYPICAL SECTION No. 3



59TH AVE E.  
STA. 30+60.00 TO STA. 37+30.32

<table border="1"> <tr> <td>No.</td> <td>REVISIONS</td> <td>DATE</td> <td>BY</td> </tr> <tr> <td> </td> <td> </td> <td> </td> <td> </td> </tr> </table>				No.	REVISIONS	DATE	BY					SCALE AS NOTED DESIGNED BY BLZ DRAWN BY JMA CHECKED BY JLS	 HDR ENGINEERING, INC. 4830 W KENNEDY BLVD, SUITE 400 TAMPA, FL 33609	DATE 11/2022 PROJECT NO. 6107660	 MANATEE COUNTY PUBLIC WORKS	DESIGN ENGINEER BRIAN L. ZIMMERMAN FL. LICENSE NO. 78557	TYPICAL SECTION (3)	SHEET NO. 4
No.	REVISIONS	DATE	BY															