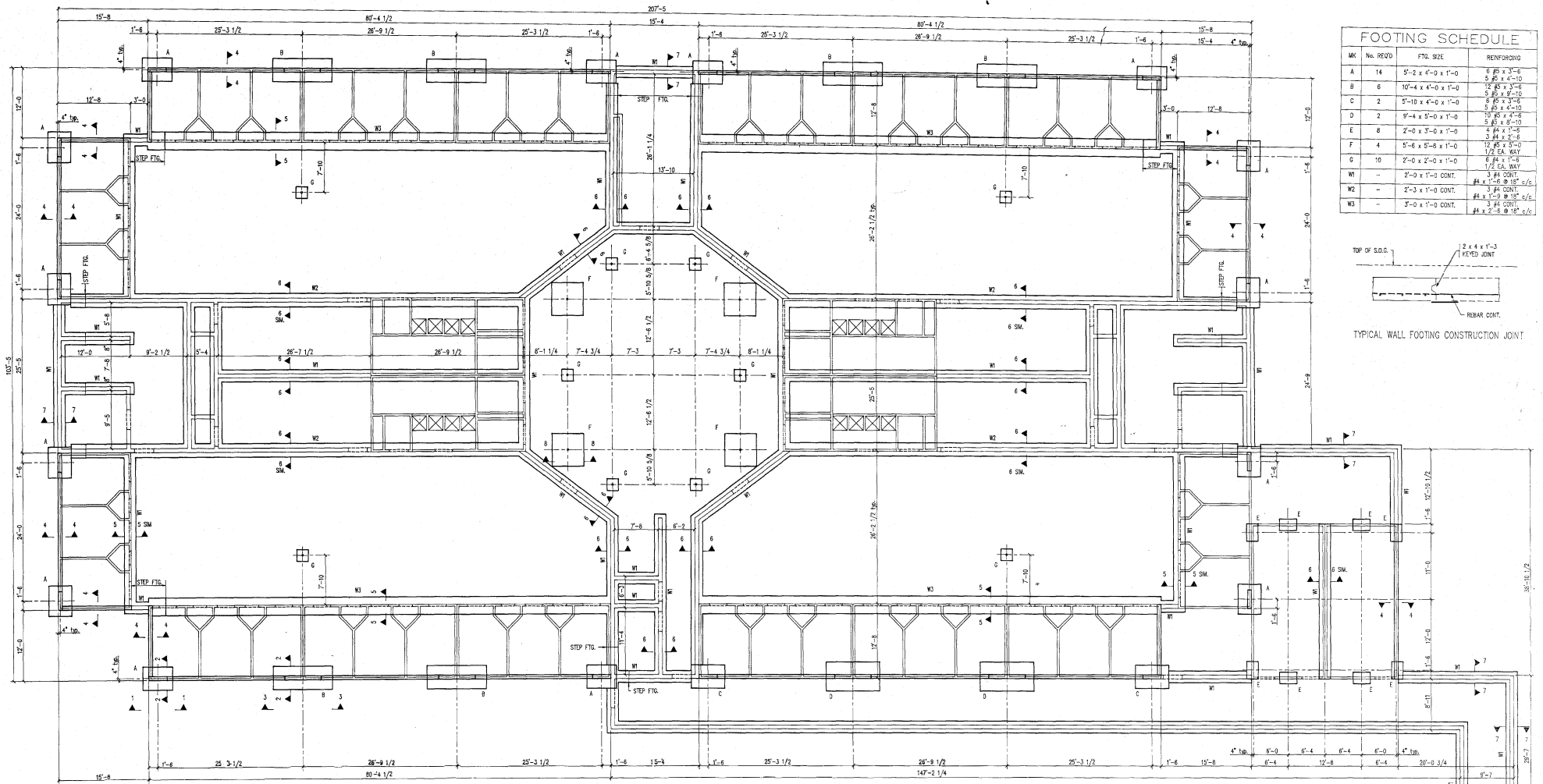


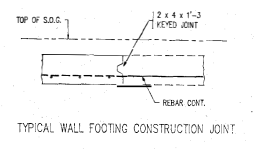
BID ATTACHMENT 3

**IIFBC NO. 20-R073858AJ, MANATEE COUNTY JAIL - STOCKADE ROOF REPLACEMENT PROJECT NO.
6073402**

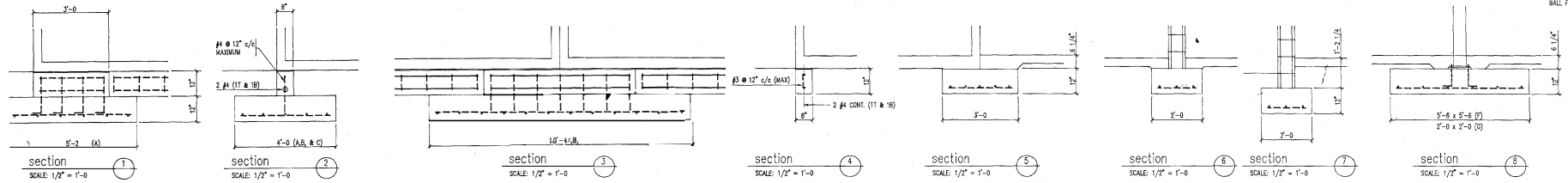
**MANATEE COUNTY STOCKADE FACILITY EXPANSION
AS - BUILT DRAWING, DATED JANUARY 3, 1991**



FOOTING SCHEDULE			
NO.	REVO.	FTG. SIZE	REINFORCING
A	14	5'-2" x 4'-0" x 1'-0"	6 #5 x 3'-6" 5 #5 x 4'-10"
B	6	10'-4" x 4'-0" x 1'-0"	12 #5 x 3'-6" 5 #5 x 5'-10"
C	2	5'-10" x 4'-0" x 1'-0"	6 #5 x 3'-6" 5 #5 x 4'-10"
D	2	5'-4" x 5'-0" x 1'-0"	10 #5 x 4'-8" 5 #5 x 5'-10"
E	6	2'-0" x 3'-0" x 1'-0"	4 #4 x 1'-8" 3 #4 x 2'-6"
F	4	5'-6" x 5'-8" x 1'-0"	12 #5 x 5'-0" 1/2 EA. WAY
G	10	2'-0" x 2'-0" x 1'-0"	3 #4 CONT. 1/2 EA. WAY
WT.	-	2'-0" x 1'-0" CONT.	#4 x 1'-8" @ 15" c/c
WT.	-	2'-3" x 1'-0" CONT.	3 #4 CONT. #4 x 1'-8" @ 15" c/c
WT.	-	2'-0" x 1'-0" CONT.	3 #4 CONT. #4 x 2'-6" @ 15" c/c



FOUNDATION PLAN
SCALE: 1/8" = 1'-0"



PROVIDE 3 #4 x 2'-0" DOWELS TO EXISTING WALL FOOTINGS.
EXISTING BUILDING

AS-BUILT DRAWING
JAN. 3, 1991

REV.	DATE	DESCRIPTION	CHKD.	APPR.
10/30/90		AS-BUILT		

CONSTRUCTION DESIGN AND ENGINEERING INC.
10000 W. UNIVERSITY BLVD.
SUITE 1000
DADE COUNTY, FLORIDA 33157

INTERNATIONAL SYSTEMS, INC.
POST OFFICE DRAWER 1667
BROOKLYN INDUSTRIAL COMPLEX
MOBILE, ALA. 36601
(205) 432-3561

PROJECT NO.	DESIGNED BY:	CRS
FILE NAME:	DRAWN BY:	MCSSTA
DATE STARTED:	CHECKED BY:	BFB
9-7-90		CRS

FOUNDATION PLAN

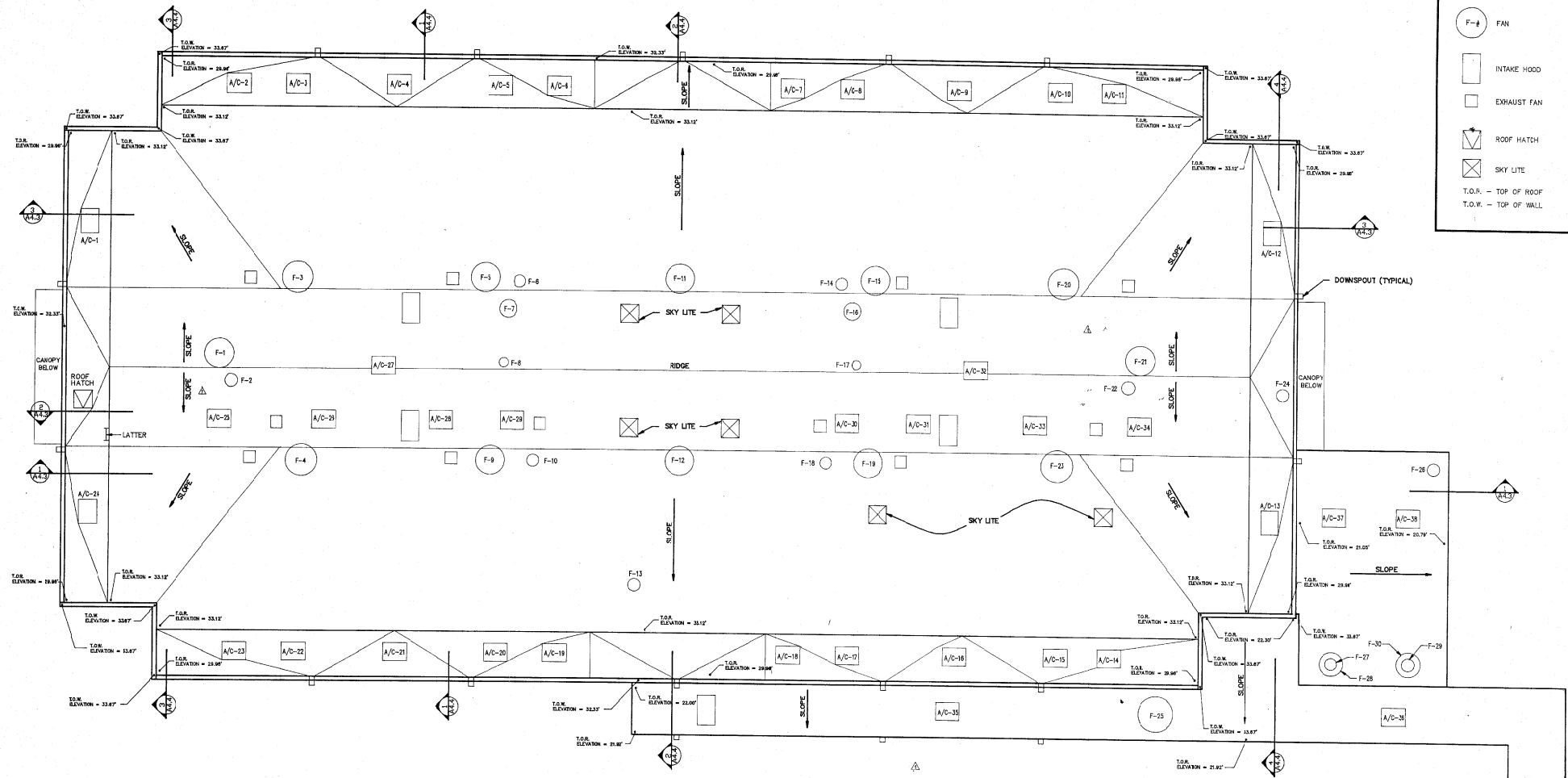
MANATEE COUNTY STOCKADE FACILITY EXPANSION
PALMETTO, FLORIDA

S1.1

AS-BUILT
DRAWING
JAN.3,1991

LEGEND:

- A/C # A.C. UNIT
- F-# FAN
- INTAKE HOOD
- EXHAUST FAN
- ROOF HATCH
- SKY LITE
- T.O.R. - TOP OF ROOF
- T.O.W. - TOP OF WALL



ROOF PLAN
SCALE 1/8" = 1'-0"

REV	DATE	DESCRIPTION	CHKD	APPR
1	12/20/90	AS-BUILT		

JD JAMES DELAUNE, JR.
AND ASSOCIATES, INC.
681 CENTERVILLE ST.
DENHAM SPRINGS, LA 70728 (504) 884-8865

ISI INTERNATIONAL SYSTEMS, INC.
POST OFFICE DRAWER 1887
BROOKLEY INDUSTRIAL COMPLEX MOBILE, ALA. 36681 (205) 432-3961

PROJECT NO. 121389C
FILE NAME MCSA2-5A
DATE STARTED 05/01/90

DESIGNED BY: -
DRAWN BY: DJO
CHECKED BY: -
DATE: -

PROJECT TITLE
**MANATEE COUNTY STOCKADE
FACILITY EXPANSION
PALMETTO, FLORIDA**

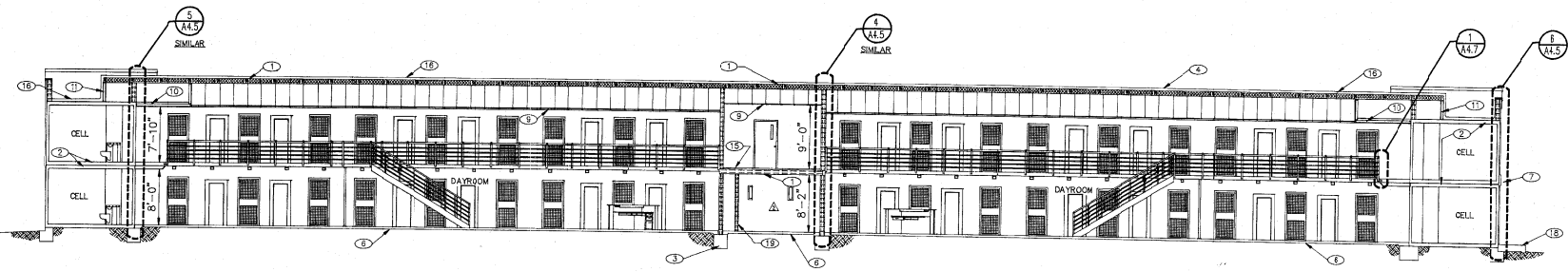
DRAWING TITLE
ROOF PLAN

SHEET NO. **A2.5**

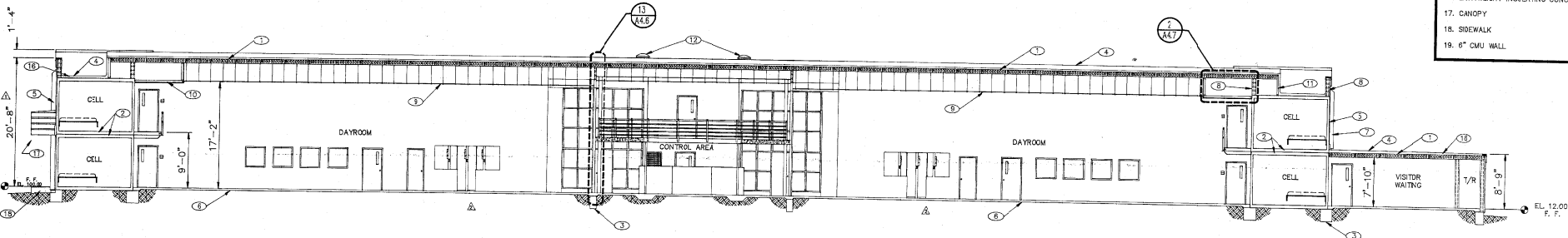
DATE: 12/20/90

KEYNOTES

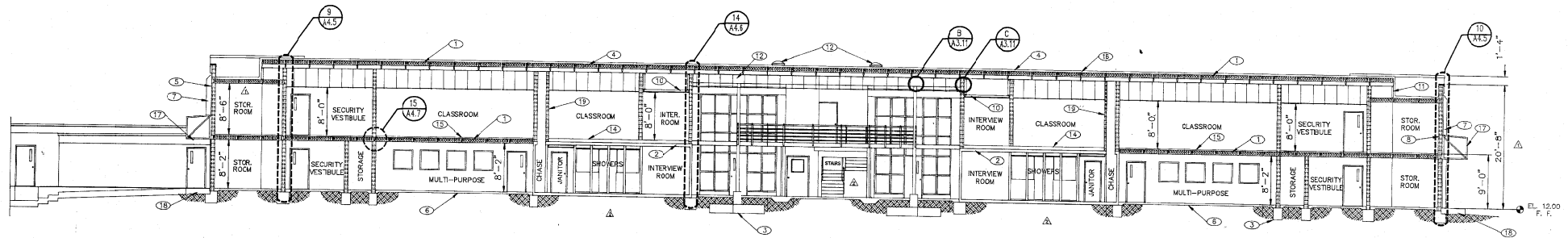
1. 8" PRECAST HOLLOW CORE PANELS.
2. I.S.I. PRECAST CONCRETE MODULE.
3. FOUNDATIONS (SEE STRUCTURAL DWGS.)
4. SINGLE PLY ROOF MEMBRANE.
5. DRYVIT.
6. 4" SLAB ON GRADE.
7. DOWNSPOUT.
8. 8" CMU WALL (SEE ARCHITECTURAL AND STRUCTURAL DWGS.)
9. ADJUSTABLE PANEL LAY-IN CEILING.
10. 3/5/8" METAL STUDS WITH 1/2" PLYWOOD & 5/8" GYP BOARD.
11. 3/5/8" METAL STUDS W/ 5/8" MARINE PLYWOOD SHEATHING.
12. SKYLIGHT (SEE ROOF DETAILS).
13. 48" x 18" LOUVERS.
14. 6" CONCRETE TOPPING.
15. 2" CONCRETE TOPPING.
16. LIGHTWEIGHT INSULATING CONCRETE.
17. CANOPY.
18. SIDEWALK.
19. 6" CMU WALL.



1 BUILDING SECTION
SCALE: 1/8" = 1'-0"



2 BUILDING SECTION
SCALE: 1/8" = 1'-0"



3 BUILDING SECTION
SCALE: 1/8" = 1'-0"

REV	DATE	DESCRIPTION	CHKD	APPR
Δ	12/21/90	AS-BUILT		
Δ	7/11/90	GENERAL REVISIONS		



JAMES DELAUNE, JR. AND ASSOCIATES, INC.
681 CENTREVILLE ST.
DENHAM SPRINGS, LA 70728
TELEPHONE: (504) 684-8865



INTERNATIONAL SYSTEMS, INC.
POST OFFICE DRAWER 1867
BROOKLEY INDUSTRIAL COMPLEX
MOBILE, ALA. 36601
(205) 432-3561

PROJECT NO. 121358C
DESIGNED BY —
FILE NAME MCSA4-3A
DRAWN BY: DJO
DATE STARTED —
CHECKED BY: —
04/20/90

DRAWING TITLE
BUILDING SECTION

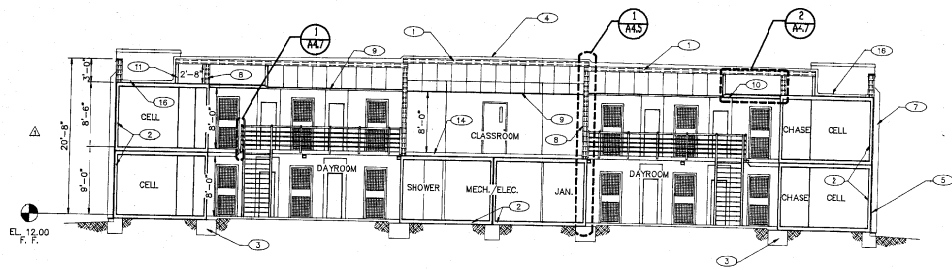
PROJECT TITLE
**MANATEE COUNTY STOCKADE FACILITY EXPANSION
PALMETTO, FLORIDA**

AS-BUILT DRAWING
JAN.3, 1991

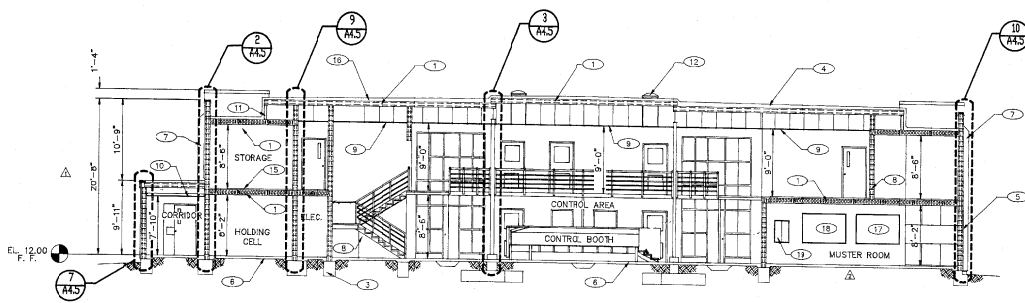
DRAWING NO.
A4.3

KEYNOTES

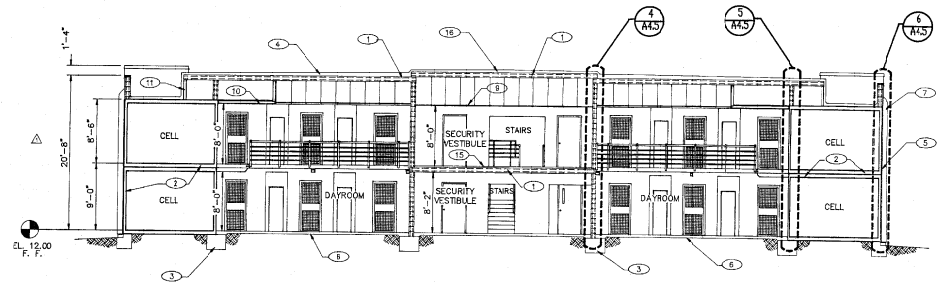
1. 8" PRECAST HOLLOW CORE PANELS.
2. I.S.I. PRECAST CONCRETE MODULE.
3. FOUNDATIONS (SEE STRUCTURAL DWGS.)
4. SINGLE PLY ROOF MEMBRANE.
5. DRYWIT.
6. 4" SLAB ON GRADE.
7. DOWNSPOUT.
8. 8" CMU WALL (SEE ARCHITECTURAL AND STRUCTURAL DWGS.)
9. ACOUSTICAL PANEL LAY-IN CEILING.
10. 3 5/8" METAL STUCCO WITH 1/2" PLYWOOD & 5/8" GYP BOARD.
11. 3 5/8" METAL STUDS W/ 5/8" PLYWOOD SHEETING.
12. SKYLIGHT (SEE ROOF DETAILS).
13. 48" x 18" LOUVERS.
14. 6" CONCRETE TOPPING.
15. 2" CONCRETE TOPPING.
16. LIGHTWEIGHT INSULATING CONCRETE.
17. BULLETIN BOARD.
18. CHAUK BOARD.
19. KEY CABINET.
20. 18" S.Q. ACCESS PANEL - ONE EACH LOUVER.



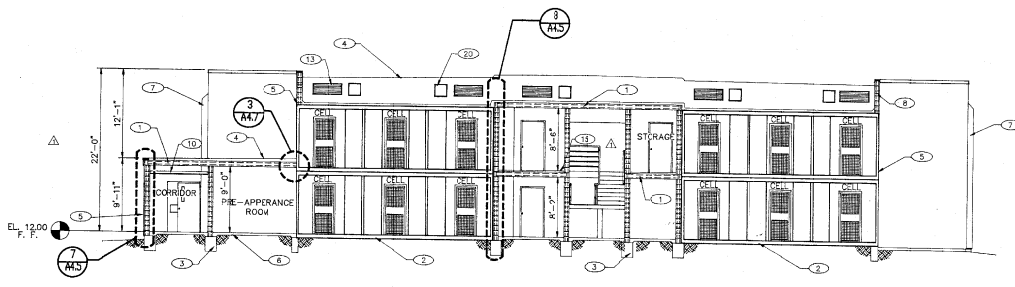
1 BUILDING SECTION
SCALE: 1/8" = 1'-0"



2 BUILDING SECTION
SCALE: 1/8" = 1'-0"



3 BUILDING SECTION
SCALE: 1/8" = 1'-0"



4 BUILDING SECTION
SCALE: 1/8" = 1'-0"

REV	DATE	DESCRIPTION	CHKD	APPR
1	12/21/90	AS-BUILT		
2	7/23/90	GENERAL REVISIONS		



JAMES DELAUNE, JR. AND ASSOCIATES, INC.
681 CONTINENTAL ST. DENHAM SPRINGS, LA 70728
TELEPHONE (504) 644-8855



INTERNATIONAL SYSTEMS, INC.
POST OFFICE DRAWER 1667 BROOKLYN INDUSTRIAL COMPLEX
MOBILE, ALA. 36601
(205) 432-3541

PROJECT NO.	DESIGNED	DRAWING TITLE
121389C	-	BUILDING SECTIONS
FILE NAME	DRAWN	
MCS14-4A	N.E.P.	
DATE	CHECKED	
4/23/90	-	

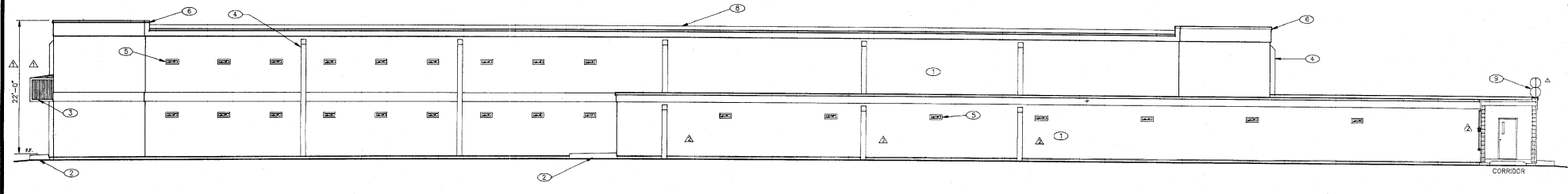
PROJECT TITLE	DRAWING NO.
MANATEE COUNTY STOCKADE FACILITY EXPANSION	A4.4
PALMETTO, FLORIDA	SHEET NO. 04

AS-BUILT DRAWING
JAN.3.1991

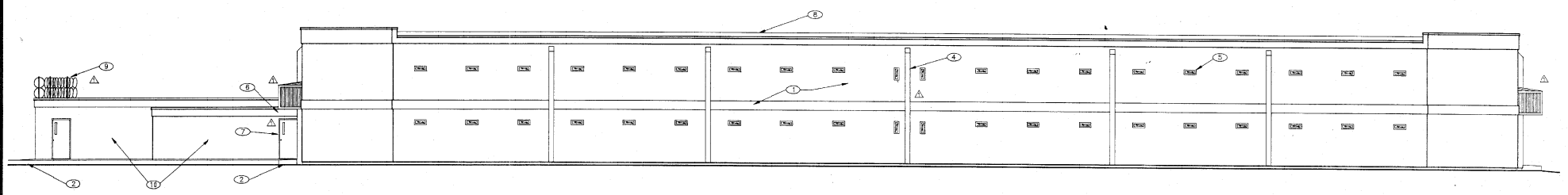
12/21/90
7/23/90
5/29/90

KEYNOTES

- △ 1. PLACO FINISH
- 2. CONCRETE PAD
- 3. METAL CANOPY
- 4. 4" PVC DOWNSPOUT INCASED BY DRYWIT
- 5. DETENTION WNDOW - 20" W X 5" H
- 6. CAP TRIM
- 7. DETENTION DOOR
- 8. ROOF TOPPING
- 9. RAZOR WIRE
- △ 10. STUCCO FINISH
- △ 11. SPRINKLER INSPECTION LINE



1 WEST ELEVATION
SCALE 1/8" = 1'-0"



2 EAST ELEVATION
SCALE 1/8" = 1'-0"

AS-BUILT
DRAWING
JAN. 3, 1991

REV	DATE	DESCRIPTION	CHKD	APPR
△	12/20/90	AS-BUILT		
△	07/10/90	GENERAL REVISIONS		

JD JAMES DELAUNE, JR. AND ASSOCIATES, INC.
881 CENTERVILLE ST. DENHAM SPRINGS, LA 70728
TELEPHONE: (504) 684-8665

ISI INTERNATIONAL SYSTEMS, INC.
POST OFFICE DRAWER 1887 BROOKLEY INDUSTRIAL COMPLEX
MOBILE, ALA. 36601
(205) 432-3561

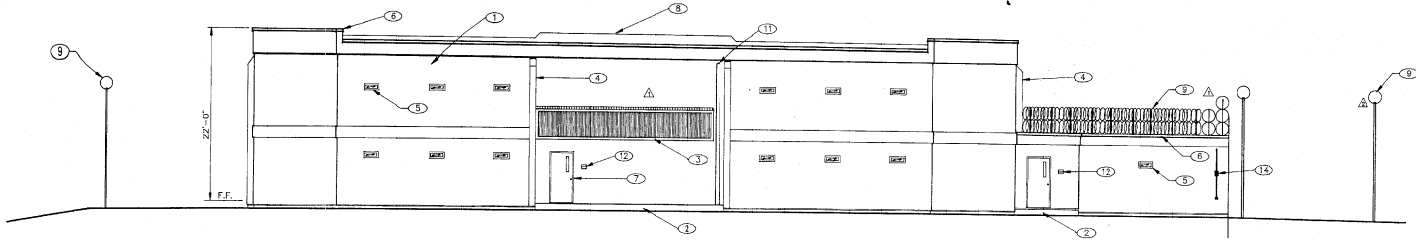
PROJECT NO.	DESIGNED BY	DRAWING TITLE
1221080C	-	EAST & WEST BUILDING ELEVATIONS
FILE NAME	DRAWN BY	
MCSA4-1A	DJO	
DATE STARTED	CHECKED BY	
5/01/90	-	

PROJECT TITLE
MANATEE COUNTY STOCKADE FACILITY EXPANSION
PALMETTO, FLORIDA

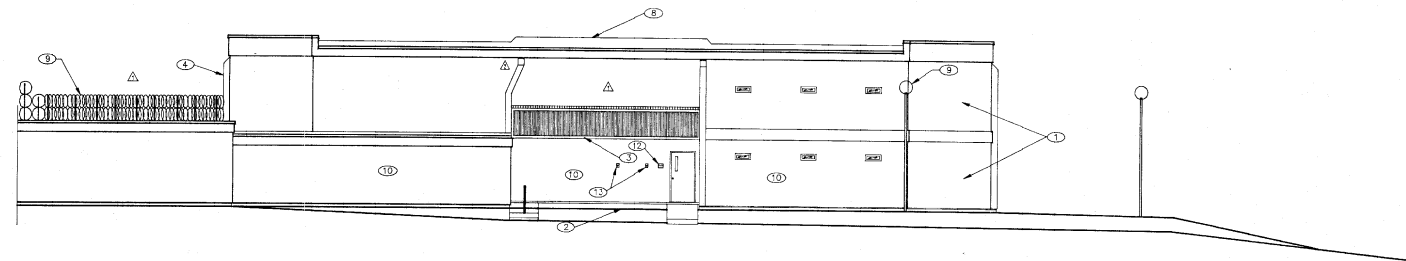
DRAWING NO.
A4.1
12/28/90
07/20/90
5/09/90
SHEET NO. 1 OF 2

KEYNOTES

- 1. PLACO FINISH
- 2. CONCRETE PAD
- 3. METAL CANOPY
- 4. 4" PVC DOWNSPOUT INCASED BY DRYWIT
- 5. DETENTION WINDOW - 20" W X 5" H
- 6. CAP TRIM
- 7. DETENTION DOOR
- 8. ROOF TOPPING
- 9. RAZOR WIRE
- 10. STUCCO FINISH
- 11. FIRE LINE RISER
- 12. INTERCOM
- 13. CIGARETTE LIGHTER
- 14. SPRINKLER INSPECTION LINE



1 NORTH ELEVATION
SCALE: 1/8" = 1'-0"



2 SOUTH ELEVATION
SCALE: 1/8" = 1'-0"

AS-BUILT
DRAWING
JAN.3,1991

REV	DATE	DESCRIPTION	CHKD	APPR
Δ	12/20/90	AS-BUILT		
Δ	7/31/90	GENERAL REVISIONS		



**JAMES DELAUNE, JR.
AND ASSOCIATES, INC.**
681 CENTERVILLE ST.
DENHAM SPRINGS, LA 70726
TELEPHONE:
(504) 864-8845



**INTERNATIONAL SYSTEMS,
INC.**
POST OFFICE BOX 1887
BROOKLYN INDUSTRIAL COMPLEX
MOBILE, ALA. 36601
(205) 432-3581

PROJECT NO.
3213890C
FILE NAME
MCS4-2A
DATE STARTED
5/01/90
DESIGNED BY
—
DRAWN BY
DJO
CHECKED BY
—

DRAWING TITLE
**NORTH & SOUTH
BUILDING ELEVATIONS**

PROJECT TITLE
**MANATEE COUNTY STOCKADE
FACILITY EXPANSION
PALMETTO, FLORIDA**

DRAWING NO.
A4.2
12/29/90
7/17/91
5/29/91
SHEET NO. — OF —