



Financial Management Department
Purchasing Division
1112 Manatee Ave W Suite 803
Bradenton, FL 34205
Phone: (941) 749-3074
www.mymanatee.org

Email

September 9, 2016

TO: All Interested Bidders

SUBJECT: Invitation for Bid (IFB) #16-2326DC
MLS Wetwell 1D Rehabilitation

ADDENDUM #1

Bidders are hereby notified that this Addendum shall be acknowledged on the Bid Form and made a part of the above named bidding and contract documents.

1. **Question:** Request to include Tnemec Perma-Shield system for sanitary sewer environments.

Response: Bidder shall bid in accordance with the IFB requirements as specified in Specification Section 09970 Surface Protection Spray System, Part 2.02.

2. **Question:** Request to approve the JWC Environmental comminutor for this project.

Response: No substitution from Specification Section 16108 Miscellaneous Equipment, Part 2.01, will be allowed.

3. Specification Section 13350A Wet Well Cleaning (page 79/99), 1.03 Cleaning: Delete item B.

4. Plan Sheet 2 of 5: The southern access hatch shown in the "Plan-Ground Floor" view shall be removed and the remaining hole doweled and filled with concrete. The southern hatch shall not be replaced. The cost for this work shall be included in the Bid Item for Miscellaneous Work and Cleanup. (revised Sheet attached)

5. Plan Sheet 3 of 5: The overflow barscreen shall be constructed per the attached manufacturer's detail.

6. Revised Bid Form attached. Quantity for Bid Form item 12 is decreased to "1".

7. Electronic Bid Form is available for download.

September 9, 2016

If you have submitted a bid prior to receiving this addendum you may request in writing that your original, sealed bid be returned to your firm. All sealed bids received will be opened on the date stated.

Bids will be received at Manatee County Purchasing, 1112 Manatee Avenue West, Suite 803, Bradenton, Florida 34205 until **September 14, 2016 at 3:30 P.M.**

Sincerely,



9/9/2016

Melissa M. Wendel, CPPO
Purchasing Official

/dcr

Attachments

BID FORM
(Submit In Triplicate)

IFB 16-2326DC

MLS 1D REHABILITATION

**COMPLETION TIME OF 180 CALENDAR DAYS
BID "A"**

	DESCRIPTION	TOTAL QTY.	UNITS	BID PRICE PER UNIT (\$)	TOTAL BID PRICE (\$)
1.	By-pass Pumping & 24-hr Monitoring	1	LS	\$ -	\$ -
2.	Wetwell Cleaning	1	LS	\$ -	\$ -
3.	Demolition	1	LS	\$ -	\$ -
4.	Concrete Repair	2,000	SF	\$ -	\$ -
5.	Stop Gate Assembly	2	EA	\$ -	\$ -
6.	Guardrail Safety System, fiberglass	1	LS	\$ -	\$ -
7.	Spray Liner	1	LS	\$ -	\$ -
8.	Explosion Proof Light Fixtures, LED	4	EA	\$ -	\$ -
9.	Fiberglass Deck Grating	45	SF	\$ -	\$ -
10.	Fiberglass Grating Embedded Angle and Supports	42	LF	\$ -	\$ -
11.	Replace Bar Screen	1	EA	\$ -	\$ -
12.	Access Hatch, aluminum & 316 S.S. hardware, etc, gas tight	1	EA	\$ -	\$ -
13.	External Lighting, LED	7	EA	\$ -	\$ -
14.	Dimminutor - (DM-T20 Open Channel with drive and control)	1	LS	\$ -	\$ -
15.	6" PVC Stilling Well	20	LF	\$ -	\$ -
16.	Aluminum Door and Frame, Wet Well Access, single door	1	LS	\$ -	\$ -
17.	Aluminum Door and Frame, Dry Well Access, double door	1	LS	\$ -	\$ -
18.	Odor Control Concrete Containment Pad / Foundation	4	CY	\$ -	\$ -
19.	Mobilization	1	LS	\$ -	\$ -
20.	Miscellaneous Work & Clean Up	1	LS	\$ -	\$ -
	BASE BID (ITEMS 1 - 20)				\$ -
21.	Contingency	10% of Base Bid			\$ -
	TOTAL BID PRICE (ITEMS 1 - 21) - BID "A"				\$ -

Bidder: _____

Signature: _____

BID FORM
(Submit In Triplicate)

IFB 16-2326DC

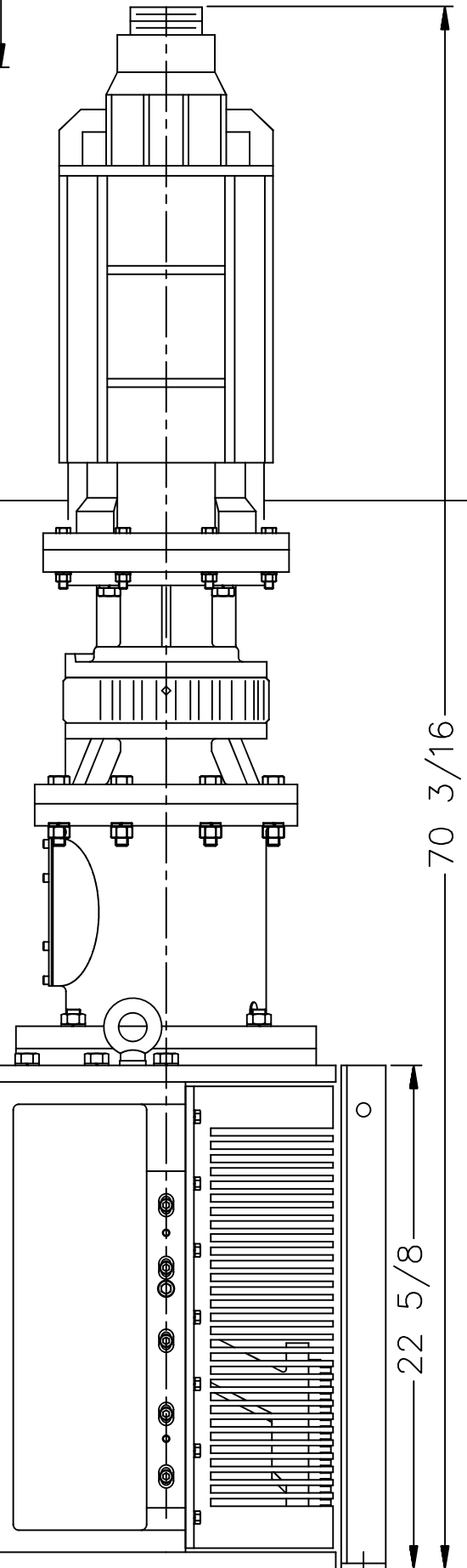
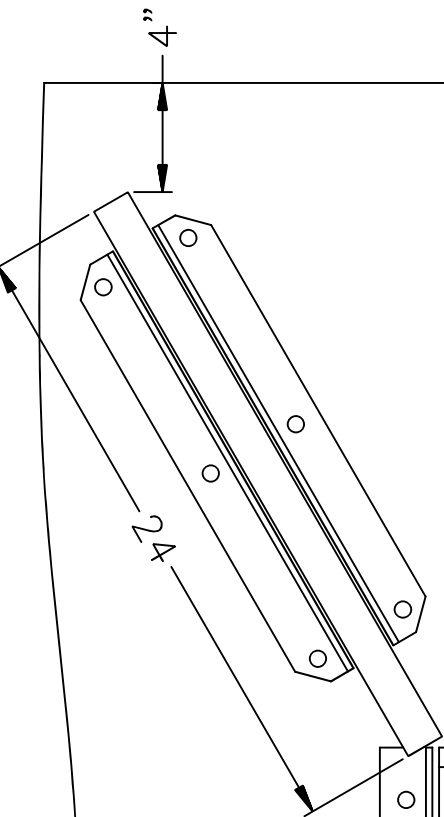
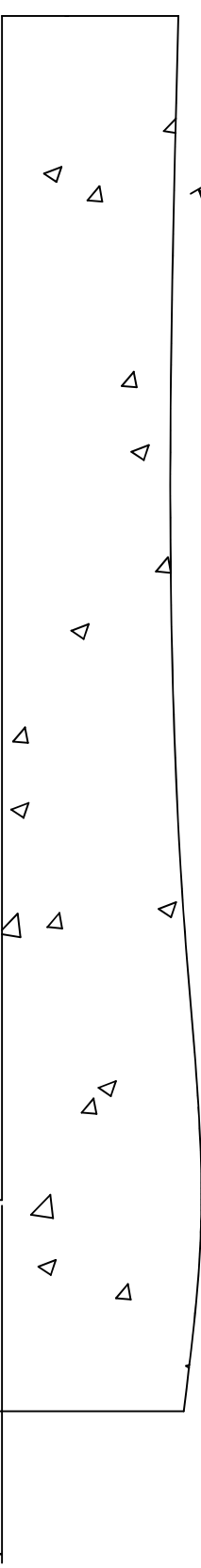
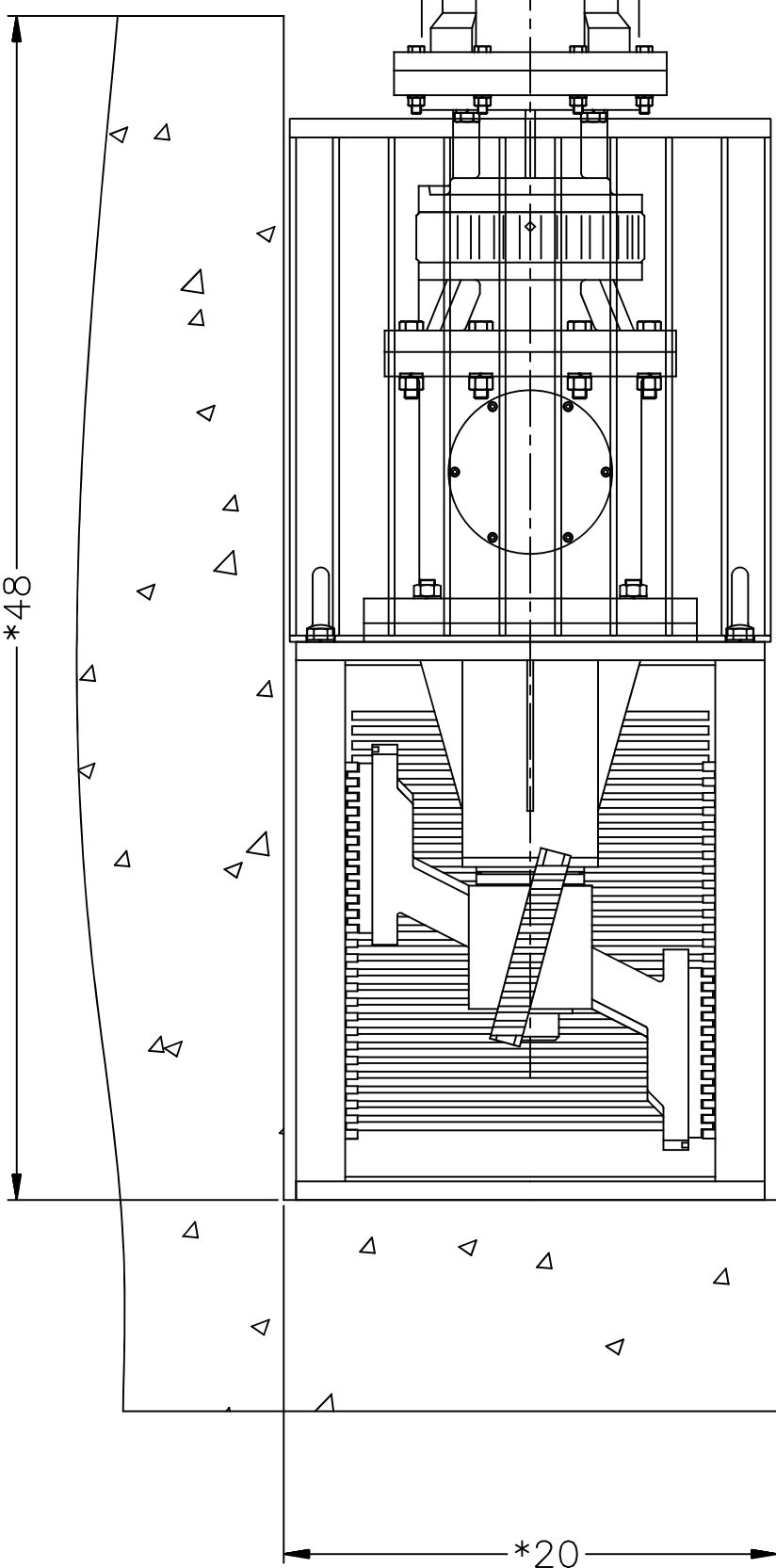
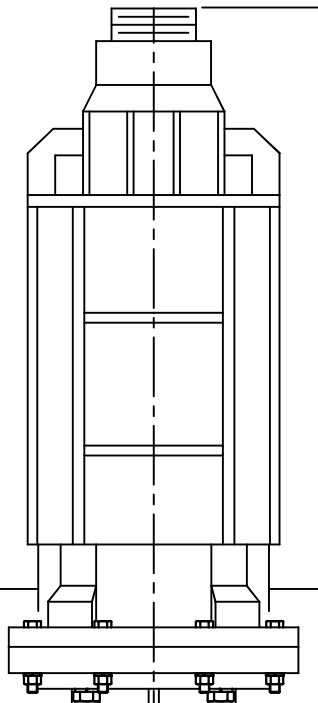
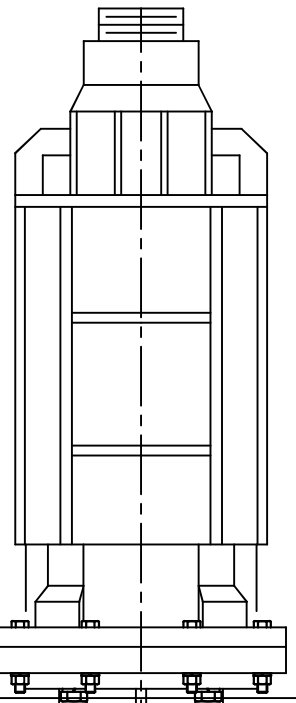
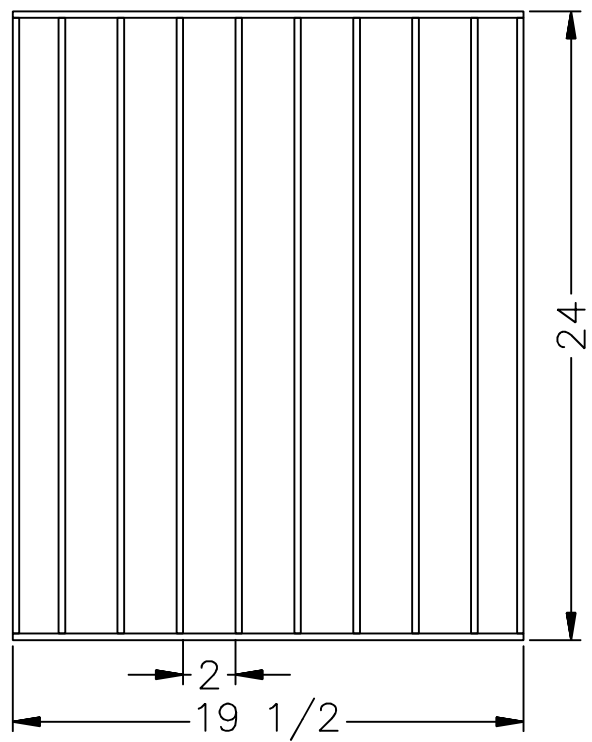
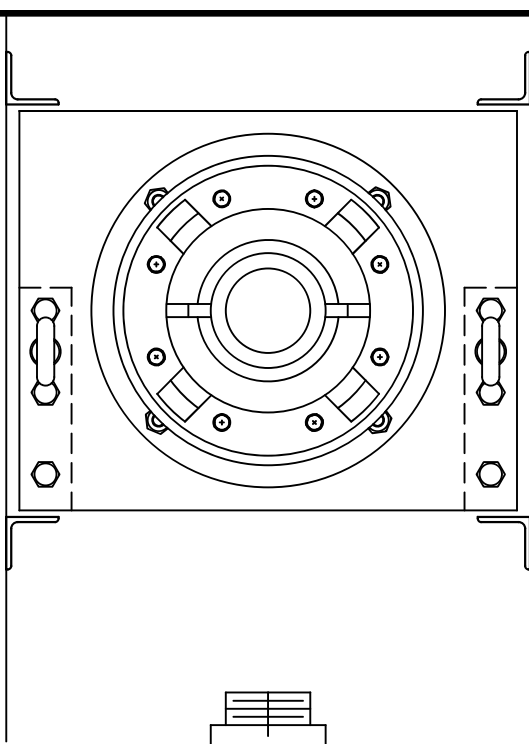
MLS 1D REHABILITATION

**COMPLETION TIME OF 240 CALENDAR DAYS
BID "B"**

	DESCRIPTION	TOTAL QTY.	UNITS	BID PRICE PER UNIT (\$)	TOTAL BID PRICE (\$)
1.	By-pass Pumping & 24-hr Monitoring	1	LS	\$ -	\$ -
2.	Wetwell Cleaning	1	LS	\$ -	\$ -
3.	Demolition	1	LS	\$ -	\$ -
4.	Concrete Repair	2,000	SF	\$ -	\$ -
5.	Stop Gate Assembly	2	EA	\$ -	\$ -
6.	Guardrail Safety System, fiberglass	1	LS	\$ -	\$ -
7.	Spray Liner	1	LS	\$ -	\$ -
8.	Explosion Proof Light Fixtures, LED	4	EA	\$ -	\$ -
9.	Fiberglass Deck Grating	45	SF	\$ -	\$ -
10.	Fiberglass Grating Embedded Angle and Supports	42	LF	\$ -	\$ -
11.	Replace Bar Screen	1	EA	\$ -	\$ -
12.	Access Hatch, aluminum & 316 S.S. hardware, etc, gas tight	1	EA	\$ -	\$ -
13.	External Lighting, LED	7	EA	\$ -	\$ -
14.	Dimminutor - (DM-T20 Open Channel with drive and control)	1	LS	\$ -	\$ -
15.	6" PVC Stilling Well	20	LF	\$ -	\$ -
16.	Aluminum Door and Frame, Wet Well Access, single door	1	LS	\$ -	\$ -
17.	Aluminum Door and Frame, Dry Well Access, double door	1	LS	\$ -	\$ -
18.	Odor Control Concrete Containment Pad / Foundation	4	CY	\$ -	\$ -
19.	Mobilization	1	LS	\$ -	\$ -
20.	Miscellaneous Work & Clean Up	1	LS	\$ -	\$ -
	BASE BID (ITEMS 1 - 20)				\$ -
21.	Contingency	10% of Base Bid			\$ -
	TOTAL BID PRICE (ITEMS 1 - 21) - BID "B"				\$ -

Bidder: _____

Signature: _____



*20

THIS DRAWING EMBODIES A PROPRIETARY DESIGN ORIGINATED BY FRANKLIN MILLER, INC. ALL DESIGN, MANUFACTURING, REPRODUCTION (EXCEPT WHERE THE RECIPIENT HAS BEEN GIVEN THE EXPRESS RIGHT BY WRITTEN AGREEMENT TO REPRODUCE THE DRAWING) IS EXPRESSLY PROHIBITED. USE AND SALE RIGHTS REGARDING THE SAME ARE EXPRESSLY RESERVED. IT IS SUBMITTED UNDER A CONFIDENTIAL RELATIONSHIP FOR A SPECIFIC PURPOSE, AND THE RECIPIENT AGREES BY ACCEPTING THIS DRAWING NOT TO SUPPLY OR DISCLOSE ANY INFORMATION REGARDING IT TO ANY UNAUTHORIZED PERSON OR TO INCORPORATE IN OTHER PROJECTS ANY FEATURES PECULIAR TO THIS DESIGN. ALL RIGHTS HERETO ARE EXPRESSLY RESERVED BY FRANKLIN MILLER, INC. LIVINGSTON, NEW JERSEY.

Franklin Miller INC.
60 OKNER PARKWAY, LIVINGSTON, N.J. 07039

DM15T, 3HP, D01-35, S250

SCALE	DWN	DATE	CKD	DATE	DWG. NO.	REV.
.	AG	12/19/13	.	.	8981DM15	1